

CIRCULATION 3300

THE SpringDale MESSENGER

P. O. Box 80, Drysdale, 3222. Ph. 53 1960

A free newsletter compiled by SpringDale Community Cottage

November 1993




MINISTER PRAISES COMMUNITY ACHIEVEMENT

“A Truly Remarkable Effort”

It's Our own

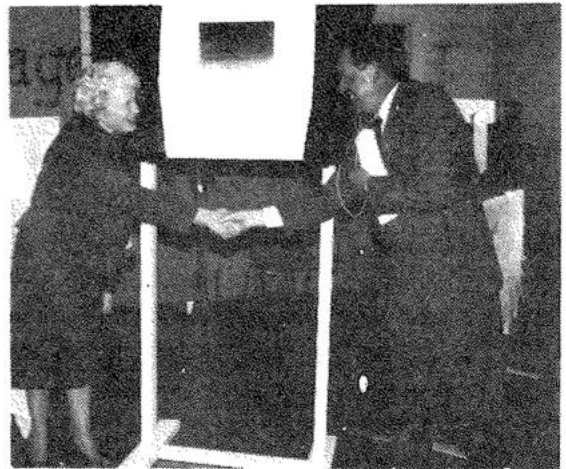
Good News Story

for this month!

On November 3rd an estimated 150 people attended the official opening of the new SpringDale Community Cottage in Princess St., Drysdale. There were too many to fit into the Cottage, so because of inclement weather, the ceremony was held in the Drysdale Hall, adjacent to the Community Cottage.


Master of Ceremonies, Mr. Ian Couper, Bellarine District Manager for the Greater City of Geelong, explained how with the aid of a grant of \$20,000 from the Government, a building had been bought and moved to the site.

The local community rallied to the cause.



Minister for Community Services Mr Michael John unveils the plaque and congratulates Mrs Dulcie Stone on the Official Opening.


With the help of local industry and much voluntary work, the building has been converted into a community asset which




**DRYSDALE VILLAGE
HARDWARE**

(052)
51 3267

THE ARCADE
HIGH STREET
DRYSDALE 3222





**Elliott's
Convenience
Supermarket & Newsagency**

**12 High St Drysdale
Ph 512401 / 512776**

normally would have cost \$140,000.

Mrs Dulcie Stone, President of SpringDale Community Cottage, spoke briefly on the the history and work of the Cottage.

Local M.P. Mr Garry Spry congratulated the SpringDale Committee on their outstanding service to the community, and presented Foundation Member Certificates to Sue O'Connor and Brenda Platt, in acknowledgement of their heroic and successful efforts in getting the SpringDale Community Cottage established.



SpringDale Community Cottage (Photo - Leigh Atkinson)

GRASS SLASHING



DRYSDALE, CLIFTON SPRINGS, WALLINGTON, / EOPOLD

HOUSE BLOCKS - \$25.00 - 1 CUT
 \$45.00 - 2 CUTS


LARGER BLOCKS - \$35.00 Per Hour
 OVER 3 ACRES - \$30.00 Per Hour

Reasonable rates also for:

ROTARY BOEING	CONTACT:
GRADING	FRANK & TEGWEN
SCARIFYING	VELLA
HARROWING	052 51 3404
PLOUGHING	

Mr Couper then introduced the Minister for Community Services, the Honourable Michael John, M.P., who declared the new house officially open, and unveiled the commemorative plaque. Mr John congratulated the Committee of Management and the local community for their "truly remarkable effort".

Guests were present from Community Services Victoria, Greater City of Geelong Officers & Staff, The Apex Club, the Portarlington/Drysdale Lions Club, the Drysdale Rotary Club, local industries, and representatives of local Community organisations.



BELLARINE FOOT CLINIC

PAUL B. SHANNON
 PODIATRIST

100 The Terrace
 Ocean Grove, 3226
 Ph: 56 2019

39 Fenwick St
 Portarlington, 3223
 Ph: 59 2537



Mrs Dulcie Stone, Mr Garry Spry M.P., with the Hon. Michael John M.P., Minister for Community Services.

After the ceremony, the Minister and guests were given a conducted tour of the new building and facilities, and a delightful afternoon tea was served in the Hall by the Community Health Centre Auxiliary. It was crowded!

The Community Cottage President Mrs Dulcie Stone, said: "The overwhelming feeling of community involvement and pride of achievement, which had become increasingly evident in the days leading up to Our Big Event, continued throughout the day.

"The spirit of grass roots commitment to an ideal, started the SpringDale Community Cottage, and the same spirit of grass roots commitment to the same ideal has transformed a fairly worn Ministry of Housing home into a sparkling and attractive community cottage.

"The same spirit of grass roots commitment to the future was evident at the Opening Ceremony.



Mr Garry Spry M.P., Mr Michael John M.P., with Mrs Diane Cate (Co-ordinator and Mrs Dulcie Stone (President).

"The SpringDale Committee of Management is deeply grateful to all those who made the dream come true. It is with pride and pleasure that we publish the names of groups and individuals who made possible what has been acknowledged as - 'A TRULY REMARKABLE EFFORT'."

Special thanks to Mr. Leigh Atkinson, of Bellarine Peninsula One Hour Photos,

for the photography at the opening ceremony, and for the prompt supply of the prints required for this copy of the SpringDale Messenger.

Thank you, Leigh!

BELLARINE STATIONERS

For Home,
Office or School
Also
Art Supplies Available

Shop 6, Hancock St.
Drysdale 3222

Ph. & Fax 53 2311

Bellarine Hearing Services

Geraldine McClumpha
B.Sc. Dip.Aud. M.Aud. S.A.(C.C.)

Audiologist

- ★ A.H.S. accredited provider
- ★ Quality Hearing Aids
- ★ Professional hearing assessment

187 Myers St. Geelong

Ph. 29 6407

After hours enquiries
welcome on 51 2306

Grills, Double & Co SOLICITORS

"Gallop House"
15 Hancock St.

Drysdale

Ph (052) 53 1966

SpringDale Community Cottage

wishes to thank all the following kind people and organisations who have generously donated their time and talents, goods and services or equipment for the establishment of the new Cottage.

- Alcoa of Australia Ltd
- Apex Club of Drysdale
- Bellarine Community Health Services Committee & Staff
- Bellarine Community Health Services, Drysdale Auxiliary
- Heather Blair
- Keith Cate
- City of Greater Geelong, Bellarine District Staff
- Ian Couper
- Direct Decorators
- John Doerg
- Wayne Elliott
- Fletcher's Carpets
- Karen Gray
- Greg Hall
- Neil Hamer
- Health & Community Services & Staff
- Stuart Jarret
- Jim Lilly & Crew
- Lions Club of Portarlington /Drysdale
- Bill & Marie Martin
- Geoff Morgan
- Bill Morrison
- Neil Muhlan
- John Murphy
- John Niksic
- R & D Curtain Tracks
- Roz Reeves
- John Ryan
- Basil Ristevski
- Rohm & Haas Australia P/ Ltd
- Rotary Club of Drysdale
- Rex & Pat Ruwoldt
- David Stone
- Evelyn Stowe

We ask you to support them and our local community.

SpringDale Community Cottage Funding

Apart from work for the disabled or disadvantaged people in our community, SpringDale regularly runs about 30 classes to teach people new skills and occupations. In the past, these classes have been held in venues scattered throughout the local area.

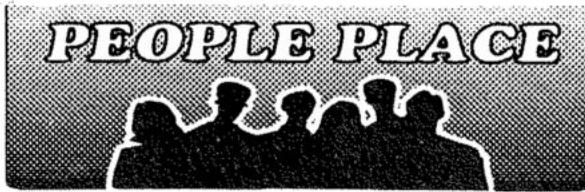
A \$20,000 Government grant and the generous support of the people, businesses, organisations and volunteers listed above has now enabled SpringDale to operate from their own premises.

Fees charged to all participants make the classes themselves self-funding, but organi-

sation of the classes and other business of the Cottage requires that a Co-ordinator must be in attendance. Community Services Victoria subsidise the cost of a paid co-ordinator, and in July 1993 increased the number of paid hours from 5 to 15.

The condition attached to the subsidy is that the Cottage must be staffed by volunteers for an additional equivalent no. of hours, so SpringDale is open 30 hours per week.

SpringDale has been, and always will be, heavily dependent on volunteers. New Volunteers are VERY welcome!



Rev. Dr & Mrs Gallacher

Uniting Church Bellarine Parish

On 21 October Rob and Norma Gallacher (Gall-a-her) moved into the Uniting Church Manse in Barrands Lane, Drysdale. They come to serve the congregations and the community in Drysdale/Clifton Springs, Bellarine, Portarlington and St Leonards.

They bring with them a wealth of experience and a deep concern, as well as substantial qualifications. Rob has ministered in the country at Dunolly and Boort, in Melbourne suburbs old and new at Malvern and Glen

Waverley, and for the last ten years in the Geelong City parish. While there he gave great leadership to the work of the church as Chairman for the whole district (Barwon Presbytery). The people of this area have come to appreciate his guidance and skills.

He has studied in Cambridge and Geneva and has a doctorate in ministry from San Francisco. Rob likes to be involved in the affairs of the local community, is an active Rotarian, and pursues interests in history, art and gardening.

In ministry Rob just set out to take all people seriously and to be a faithful servant of our Lord Jesus Christ.

Norma is a primary school teacher who has specialised in teaching children with handicaps. She has been a consultant to schools on the Bellarine Peninsula and currently teaches at Corio.

The people of the Uniting Church are excited at the prospect of Rob's energetic leadership and resourceful teaching. Please welcome this able family to our community.

A critic is someone who knows the way but can't drive the car. - Kenneth Tynan.

An egotist has one point in his favour : he doesn't go around talking about other people. - WGP.

 **Drysdale
Timber &
Hardware**

Lot 1, Murradoc Rd Drysdale
The Family Hardware Store
Treated Pine & Timber
cut to size

Open
7 Days


Len, Renate,
Manfred & Staff

Ph. (052) 51 2852



Volunteer painters (L to R): David Stone, John Murphy, John Ryan, and Bill Martin at work on the Cottage.





Bellarine Peninsula
ONE HOUR PHOTOS

The Bellarine Peninsula's only Specialist
ONE HOUR PROCESSOR
Shop 6 The Village Walk
21 Clifton Springs Rd
Drysdale Ph. 51 3300

KODAK EXPRESS



GAV'S HAIR COMPLEX

LADIES' & MENS' HAIRDRESSING
EYELASH TINTING
EYEBROW SHAPING
BODY & FACIAL WAXING
SOLARIUM
REDKEN AMBASSADOR SALON

Village Walk
Clifton Springs Rd Drysdale
Ph. 53 1046

BARLEY UPHOLSTERY

Lounge furniture, kitchen chairs, antiques, etc. recovered or repaired.
Free quotes, pick-up and delivery.
9 Mortimer St, Drysdale
Ph 51 2487

Builder & Carpenter
Michael Kragh

Renovations
Extensions
New Homes



018 108986 or 51 3477

SpringDale Community Cottage - Working to Build a Better Community

Resume of Activities

Aims:

To provide a learning environment based on mutual support, self-help and community development which will reduce isolation, encourage community involvement and action, and reduce the incidence of more serious social problems.

To provide these services as a public benevolent institution to the community as a whole, with a particular regard for the needs of the low income, aged and young family sectors.

History :

SpringDale Community Cottage started in 1990 when Bellarine Rural City Social Worker, George Williams, persuaded Sue O'Connor to help him start a Neighbourhood House.

She remembered what it had been like for her when they first moved to the area; no transport, no family (they were all interstate), no friends. "It was dreadful." She could see very clearly what George had been trying to do - they really did need somewhere for the new families to meet the more established community, somewhere to share interests and ideas, or just a place to come and see what was happening and have a cup of coffee and a chat.

Sue said: "I really believe the way to get anything started is to keep it simple and then build on it, and that is how we started." Brenda Platt, who had been teaching sewing classes since the birth of her child, was interested in the Neighbourhood House for the same reasons as Sue - isolation, loneliness, the need to meet other young mothers.

After advertising in the weekly newspaper, displaying notices in local shops, public notice boards, the two local schools, the first coffee morning was held on 10th July, 1990. Twenty five people attended.

With no funds (except \$5 remaining from a small donation from the local craft club) the Shire, very supportive in many areas, provided a meeting room free of charge in the Clifton Springs Community Centre. The fortnightly meetings, which provided tea and coffee and speakers of local interest, highlighted the great need within the community.

Working closely with the Neighbourhood House Network, C.S.V., and Shire personnel, an 'our beginnings' story was published in a C.S.V. paper for a fee of \$250; valuable money to cover administration costs. They began to

organise classes which proved to be very successful and profitable, although very time consuming. Sue attended a workshop on 'Writing Successful Submissions' - an eye opener!

Following a 'Successful Submission' to C.S.V. some funding was granted for administration costs. The first Bank Account was opened with a donation of \$20 from the local craft club. Tutors were engaged on the basis that a minimum number of five students must enrol to cover costs of tutors' wages, hire of the room, and equipment where necessary. In the fourth term 15 different classes were organised.

One of their most significantly creative initiatives was the start of Kinderplay. It brings together small groups of children who, because their birthdays fall late in the school enrolment year, are deferring their enrolment in kindergarten. Local kindergarten teachers write the program which is then **CARRIED OUT BY PARENTS.**

The Committee continued to increase, with everyone being responsible for various activities. In 1992 SpringDale was Incorporated.

The SpringDale Messenger is compiled by the SpringDale Community Cottage, 14 Princess St., Drysdale.

Postal: P.O. Box 80, Drysdale, 3222

Enquiries & advertising: Ph. (052) 53 1960

Next publication: December 10

Deadline for copy: Nov. 26

Community Groups, Churches, Sporting Clubs, Service Clubs, etc., are invited to submit details of their future activities for regular inclusion in the Community Diary section, or as articles in the news section, as appropriate.

Copy may be typed, printed, or legibly hand written, and left at the SpringDale Office at 14 Princess St., in the box at Elliott's Newsagency, in the letterbox at 73 Bay Shore Avenue, Clifton Springs, or posted to P.O. Box 80, Drysdale, 3222.

Views expressed in this newsletter are not necessarily the Publisher the SpringDale Community Cottage, or the Editor Rex Ruwoldt.

rated. It also received funding for a 5 hour Coordinator, which Council matched with a further 5 hours funding. Meron Lovegrove was employed for 10 hours per week.

A volunteer group was organised to assist with the increasingly complex management of SpringDale, still operating from the shared premises.

1993 has been a year of change. C.S.V. funding has increased Coordination time to 15 hours per week. Our new home has been made possible by a C.S.V. Grant of \$20,000, and is on Council land. The Bellarine Rural Council, and now the City of Greater Geelong Administration, have - as always - been a tower of strength and a continuing reliable source of encouragement, information, and practical help to SpringDale.

The role of the early assistants, George and Clare, has been readily and happily continued by Karen Gray and Geoff Morgan.

SpringDale Publications Available:

Help Yourself to Self Esteem.

Principles of Voluntarism.

What's Voluntary & What's Not?



Wallington
STRAWBERRY FAIR 1993

SUNDAY, NOVEMBER 21
10 am-4 pm
RUGBY PARK
LINGS RD., WALLINGTON

OVER 160 MARKET STALLS
Fabulous array of food.
Strawberry produce (including
great choc dipped strawberries)
Music for everyone. Rides, displays and
demonstrations. Giant slides,
merry-go-round
Proudly sponsored by Rohm and Haas
A great day for one and all.

SpringDale Bellarina Toy Library

The SpringDale Bellarina Toy Library got off to a great start on Saturday 6th November, which was Registration Day for members to join. Thanks to everyone who came along to help.

There are still a few membership vacancies left, so if you are interested I suggest you get your name on the list as soon as possible.

On Saturday, 13 November

members will be able to commence borrowing. Our hours of business will be Saturday mornings for two hours, from 10.00 am to 12.00 noon. Borrowing will be for a fortnight.

We would not have been able to open our Toy Library without the generous contributions from Drysdale Lions Club, the Apex Club, and Alcoa Australia whose donations have allowed us to purchase some wonderful toys.



We would also like to thank those people who have contributed to our fundraising efforts in any way, especially Cliff Stride for organising the Apex Chinese Banquet fundraiser, and Neville Bruns who accepted the job of guest speaker for the occasion.

News from NOW (Nurturing Our World)

The Bellarine based environment group, NOW, was recently involved in organizing a Garbage Free Lunch Day for the three primary schools in Ocean Grove, to draw attention to the amount of packaging in daily use.

Guidelines were issued to the school families through their weekly newsletters and the emphasis was on putting some thought into packing children's lunches and what

would be left when the food was eaten.

People were to ask themselves: Can it be Recycled?

Can it be reused?

Can it be composted?

The children's involvement was most important in packing the lunch, to put their own ideas forward so they would understand the message of the exercise.

Suggestions were given on how to pack lunches and during the day Mr Bill Smart of

the City of Greater Geelong was invited to visit each school and talk to the grades about the importance of careful waste disposal.

It was deemed a very successful day and a similar exercise is planned for some of the local kindergartens.

If you would like any further information about the NOW Group, please contact Lea Smith on 55 4707, or Sandy Benness on 55 2420, or watch out for our Newsletter.



TABARET
OCEAN GROVE
BOWLING CLUB

18 The Terrace, Ocean Grove
Come & play the pokies
Open 11am daily (Noon Sun)
VISITORS MOST WELCOME

Bistro meals Friday,
Saturday & Sunday evenings
Complimentary drinks
available - ph. 55 1540

Mortimer's
Petrol Station &
Convenience Store

97 High St. Drysdale
Ph. 51 2603

☆ **Petrol, Autogas**
☆ **Bait & Fishing Supplies**

CAR WASH NOW OPEN
Wash \$3.00
Wash & Wax \$4.00 with petrol

OPEN 6.00am - 10.00pm



WISE
GUYS

MENS HAIRSTYLIST

Specialising in men's & boys
hairstyling. Pensioner &
Children's discounts.
(No appointment necessary)
Mon-Thurs 8.30am-6.30pm
Friday 8.30am-8.00pm
Saturday 8.00am-12.00 noon

Wendy Herzer
Shop 2, Drysdale Village
16 Wyndham St., Drysdale
Phone 53 2503

Classique Ballet School

An exciting time is approaching for many of the young girls of this area as they make final preparations for their ballet concert, "Classique '93" at the Geelong Performing Arts Centre on November 26. The girls are students of Barbara Coleman, whose Classique Ballet School has been operating in Drysdale since 1984.

1994 promises to be an exciting year full of new developments, as Barbara is expanding her Classical teaching to offer assessments in the Christine Walsh syllabus based on the Russian Vaganova method. The students will be examined by Miss Walsh, until recently a Principal Artist with the Australian Ballet. Enrolments for 1994 in both Classical and Jazz Ballet are now being taken.

Barbara and her students extend a warm invitation to all SpringDale readers to attend their concert. 'Phone Barbara on 51 3040 for tickets and all enquiries.

Classique Ballet School

Classical & Jazz Ballet

Enrol now for 1994



Phone
Barbara Coleman
51 3040

Drysdale Village Music School

This school is conducted by Blackley's Musicland and is an extension of their Geelong business. This will give Drysdale students and adults the opportunity to learn to play music without having to travel miles. Tuition will be offered for keyboard, piano, organ, all woodwind and brass instruments, guitar - all styles, singing - classical, folk or jazz, and stage presentation.

We have a very competent army of teachers available, together with modern premises and modern instruments - this all makes for a great atmosphere for learning music. The school is situated at "Gallop House", Hancock St, Drysdale.

Various workshops & concerts will be conducted on a regular basis.

We have the experience of conducting music schools for the last 23 years. We are available for consultation and advice for either you or your children.

For more details 'phone Peggy on 29 9692, Blackley's Musicland, 168 Moorabool St, Geelong.

Drysdale Village Music School

Vacancies for Private Tuition.

Piano, Organ, Keyboard, Saxophone, Clarinet, Flute, Guitar, Vocal & Brass Instruments.

Now taking enrolments for Keyboard courses, (5 to 6 yrs) and Organ courses 7 yrs and older. Phone Peggy for more details.

Blackley's Musicland

168 Moorabool St, Geelong. Ph. 22 4240, 29 9692

Journalists say a thing they know isn't true, in the hope that if they keep on saying it long enough it WILL be true. -Arnold Bennett.

DAVID C. PINNEY PHARMACY

5/3 Wyndham St.
Drysdale

Ph. 51 3298

- ◆ PRESCRIPTIONS
- ◆ COSMETICS
- ◆ GIFTS
- ◆ ANIMAL HEALTH

Hours:
Weekdays 9am - 6pm
Sat 9am - 1pm Sun 9am - noon

OSTEOPATH Dr A. FRASER

SPORTS INJURIES
BACKS - MUSCLES
MON-WED-FRID
9 AM - 5 PM

1 Edge Water Drive
Clifton Springs

Ph. 51 3697



The past few months have been quite wet; let's hope that November will provide us with some pleasant sunny days for the remainder of Spring. Even though it has been wet, not to mention windy, there are still lots of jobs to do in the garden. Summer flowering annuals like petunias, marigolds, portulaca and the like can be planted and will thrive in the warmer months. There are always weeds to pull, grass to mow, vegie gardens to be dug - the list never ends, but neither does gardening.

The mountains of moisture supplied from above have made very good breeding conditions for aphids and the like. With roses now budding and coming into bloom, it will pay to check them over for these sap suckers and give them a burst of Garlic, Pyrethrum, or even soapy water. They may well reappear in a couple of days; it's not the same bugs

reincarnated, it's a fresh bunch ready to renew the attack.

The dreaded Black Spot on roses enjoy these weather conditions as well, so it would be wise to begin spraying if you haven't already. Triforine or Kocide will stem the Black Spot, or if you are an all-in-one person, there are squeeze packs available that control Black Spot and kill off the nasties at the same time.

With roses now about to do their thing in the flowering stakes, it's worth remembering not to be afraid of taking the lovely long stems from the bushes and plonking them in a vase inside. Not only will it brighten up the room, but the right rose will provide a lovely fragrance as well, so why leave it in the garden where you may not be able to appreciate it as much?

Neil Muhlhan

Alinga Nursery



Classes

Why not enrol in a class - make new friends and learn new skills?

Ring 53 1960 for details, or drop into 14 Princess Street, Drysdale.

Vacancies still available in the following classes:

Baskets & Birds' Nests.

Christmas Centrepiece.

Christmas Wreaths.

Beaded Applique.

Chocolate Making.

Relaxation & Well-being.

Cardio-Pulmonary Resuscitation.

Women can make fools of some men; other men are the do-it-yourself type. - WGP.

When your income is less than your outgo, your upkeep could be your downfall. -WGP.

Alinga Nursery Pty Ltd

Cnr Jetty Rd & Railway Cres

Drysdale

Large range of outdoor
Plants, natives, trees,
shrubs, ground covers,
ornamental trees.

Kerrie & Neil Muhlhan



OPEN 7 DAYS

Ph 53 1299

Drysdale Mower Service

John & Paula
Baker

Phone

(052) 53 1 608

31 Murradoc Rd
Drysdale



Wirruna Nursery

& DISPLAY GARDEN

OPEN 8.30 - 5.30 EVERY DAY

Rare plants, perennials & roses
Native & coastal shrubs
Indoor courtyard & bonsai plants
Garden furniture
Terracotta pottery & statues
Fountain pumps & sundials

660 Wallington Rd
Wallington Vic. 3221

Ph. 50 1971



A Peaceful Farewell for your Pet.

Many pet owners eventually have to face having their pet euthanased, or put to sleep. While it is never an easy decision to make, euthanasia is a humane and peaceful ending for an animal who's in chronic pain, has a terminal illness, or is suffering terribly from injuries.

When is the right time to euthanase? This is a question we're often asked. If the animal is suffering from terrible injuries or a terminal illness, then the decision to euthanase is usually easier, and is guided by your vet. It's harder for people who own a pet who is steadily deteriorating, such as an aged pet.

If an animal is still eating and drinking, showing interest in life and still able to go to the toilet, then it's worth persevering as long as you

can provide the pet with its special needs. Old and debilitated animals need patience and understanding, much like elderly people. They need more supervision and general care. Once a pet's quality of life starts to fail, then euthanasia can be a kind and peaceful ending to a long and happy life. Your veterinarian can help advise you about the right time to euthanase your pet.

Euthanasia is performed by giving an injection of very concentrated anaesthetic into the vein. It is painless and rapid.

There are several options in disposing of your pet's body. If possible you might like to bury your pet at home, or maybe on a friend's property, if it can be arranged. There are also pet burial and cremation services available. Alternatively, your vet can arrange disposal of the body.

Discuss the options with your vet. Some people prefer euthanasia to be performed at home so that the pet is in familiar surroundings. This

can usually be arranged. A nurse will often accompany the vet to assist.

It's normal for people to mourn the loss of a pet. Grief is a normal reaction to the loss of something we love. People need not feel ashamed or embarrassed if they mourn the loss of a pet. The support and understanding of family and friends during this time is important, and the people at your vet clinic are always willing to help in any way they can as you come to terms with the loss of a friend.

BELLARINE
VETERINARY PRACTICE
 7 PALMERSTON ST, DRYSDALE
 (New Drysdale Village Medical Centre)

No appointment required -

Monday 10 - 11.30 AM 2.00 - 3.00 PM
 Tuesday 10 - 11.30 AM 5.30 - 6.30 PM
 Wed'sday 10 - 11.30 AM 2.00 - 3.00 PM
 Thursday 10 - 11.30 AM 5.30 - 6.30 PM
 Friday 10 - 11.30 AM 2.00 - 3.00 PM

Phone 48 2009

The
Creative Choice
 Quality Picture Framing

- OILS
- WATERCOLOURS
- TAPESTRIES
- PHOTOGRAPHS
- POSTERS & PRINTS

Maureen Davies
 10 Coorumbly Ave
 Clifton Springs
Ph. 51 2086

Drysdale
Knit 'n' Sew



Shop 11,
 Village Walk
 DRYSDALE

Patchwork & Quilting
 Supplies, Wool,
 Haberdashery

Ph. 51 2116

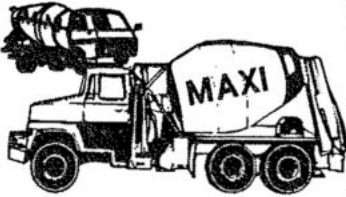
RISTEVSKI HORAN
 BARRISTERS & SOLICITORS

1 High St,
 Drysdale

P. O. Box 99
 Drysdale 3222

Fax: (052) 53 1815
 Phone (052) 51 3453

BELLARINE PREMIX & BUILDING SUPPLIES



- ☆ Quality weigh batched concrete
- ☆ Radio controlled maxi trucks & mini trucks
- ☆ Steel reinforcing at competitive prices

NO JOB TOO LARGE OR TOO SMALL

Servicing the Bellarine Peninsula & Geelong

**Ph. (052) 51 3914
AH 53 1073**

First class paving contractor arranged if required



DRYSDALE LIBRARY NEWS

With Christmas just around the corner, I thought I'd take the opportunity of reminding all Geelong Regional Library members of the great competition you can enter at Griffith's.

All you have to do is show your library card at the cash register every time you buy a book at Griffith's Bookstores.

You then have 20 chances to win \$25 worth of new books every month. Geelong Regional Library also gets 10% of the value of all books sold. Everyone benefits!

Drysdale Library now has a Fax available for public use. Local and interstate charges are \$2 for the first page and \$1 subsequent pages. Overseas charges are \$5 for the first page and \$1 subsequent pages, with \$1 per page for receipt of a Fax.

New titles to watch out for include 'Concerto' by Elizabeth Darrell; 'The Horizon' by Douglas Reeman; 'Chiefs' by Stuart Woods; 'A Dangerous Fortune' by Ken Follett; and 'Decider' by Dick Francis.

Please ask me if you can't find what you're looking for on the shelves and I'll try to get it for you.

Barbara Riley, Ph. 51 3855

Bellarine Peninsula Community Health Service

Hostel & Garden Open Day

The Bellarine Peninsula Community Health Service will hold its annual Garden & Hostel Open Day again this year at Point Lonsdale on Sunday 21 November 1993 between 1.30 and 3.30 pm.

The residential services are based at Queenscliff Community Health Centre, Nelson Road, Point Lonsdale.

The 40-bed Coorabin Hostel for the Aged or Disabled, Sims Lodge for sufferers of Alzheimers Disease, and the Centre's Independent Living Units will be open for inspection.

Staff and Committee will be available for advice and information.

An afternoon tea will be provided by the Ladies Auxiliary.

Tallywood Boarding CATTERY



247 Jetty Road
Drysdale

Spacious individual runs
Inspections welcome
Vaccinated cats only
All diets catered for
Pick-up & delivery service

**Vivienne Benham
Ph. (052) 51 2246**

WILLOW BOWNS HOBBY CERAMICS

Paints & Greenware

Open

Mon.-Fri. 10am - 4.30pm
Sat. 9am - 1 pm

Day & Evening
Classes available

Factory 4,
46 Murradoc Rd.
DRYSDALE 3222

Ph. 53 2240

Carpet Cleaning Domestic or Commercial

- Carpets
- Car Seats
- Window Cleaning
- Upholstery
- Steam & Dry Cleaning
- Modern Equipment
- Carpet & Fabric protection available

Blackley's Cleaning Service

Ph. 51 2709

Ask Phillip for a quote.

**CITY
of
GREATER
GEELONG**

Bellarine District

Supports the
Springdale Messenger
in the interests of better
community communications

High St, Drysdale -
Reconstruction from
Eversley St to Murradoc
Rd

Landscaping works are nearing completion following the full road reconstruction of High Street from Eversley Street to Murradoc Road, including the installation of a centre road median and roundabout at the Eversley Street intersection.

Over 600 Rosemary shrubs have been planted in the median strip, along with Cornish Elm trees which have an upright growing habit to allow sufficient vehicle height for traffic using the inner lane.

Brush Box trees have

been planted in the naturestrips to complement the existing trees which were established some years ago.

Flowering Crab Apple trees have been planted in the school crossing nodes to add a further splash of colour and contrast. Mulched garden beds, brick paving and pine log treated bollards installed at the shopping centre precinct, give the township a further sense of identity.

To complement the landscape, instant grass has been laid in the naturestrip areas, including the roundabout at the intersection of Eversley Street. This has an attractive central floral garden bed which completes the overall townscape picture as motorists enter Drysdale from Geelong.

Beacon Point Reserve,
Clifton Springs

A successful community tree planting was recently held at this reserve, with adjacent residents planting over 200 small trees and

shrubs. All plants were staked, guarded and mulched.

Many thanks to local resident, Mr Alan Walker and family who helped co-ordinate the project and provided BBQ facilities at their residence for a sausage sizzle which followed the planting day.

**CITY
of
GREATER
GEELONG**
Bellarine District
MULCH

**Help your plants and
save water (and \$\$\$).**

*Mulch your
garden*

**Available for \$13/m² from
Drysdale Waste Disposal
and Recycling Centre,
Becks Road, Drysdale.**

**Hours 8 am - 4.30 pm
ONLY**

**Bulk deliveries available
Phone 53 0300**

**BELLARINE
AUTO
SERVICES**

Quality Mechanical Repairs
Tuning - Servicing
LPG Conversion - EFI
Tyres - Batteries - RWC
Licensed Vehicle Testers
Mortimer St., Drysdale
Proprietors:
P. Bruce J. Pamplin
Ph. 53 1644


**CLIFTON SPRINGS
BOWLING CLUB
BINGO
EVERY
WEDNESDAY
7.30PM
10c PER GAME
Enquiries:
Phone 51 3605**

*A dog can teach a boy fidelity,
perseverance, and to turn around
three times before he lies down.
- Anon.*

*Anyone who has ever done
anything makes mistakes some-
time or other; but to really louse
something up completely, you
need a computer. -Anon.*

*Experience is the name eve-
ryone gives to their mistakes. -
Anon.*

Creative Writers Award 1993

On 29 October, the City of Greater Geelong, Bellarine District arranged the 1993 Creative Writer's Award Presentation Night. This is the third year that the event has been celebrated.

Congratulations are to go to all the talented people in our community who have contributed their literary works. Congratulations also go to the Creative Writers Award Advisory Committee, the Adjudicator (Mr Graeme Kinross-

Smith), and the generous sponsors of the awards.

Those awards which went to local people are as follows:
Primary : for Year 4 & Under.

1. Short Fiction.

Highly Commended :

Greg Foyster - Drysdale Primary School.

Title : "Whale Island".

Secondary : for Years 10, 11 & 12.

1. Short Fiction.

Winner: John Humphrey - Newcomb Secondary College.

Title : "Extremes".

Open Section.

1. Short Fiction.

Highly Commended.

Jeanne S. Hoornweg - Clifton Springs.

Title : "Distant Friends.

June Thomas - Portarlington.

Title : "Across Water".

VALID Corner

Over the coming months, VALID and SpringDale Community Cottage will be working together to provide a series of day programs.

VALID is Victoria's peak advocacy agency for people with intellectual disabilities, their families and carers. It gives assistance and advice to people who are looking for support services, and pro-

vides information on all the current issues affecting the intellectual disabilities field.

Typical topics are :

Developing Effective Advocacy Skills (to help get what you need, rather than what others tell you you need!).

Living with People with Challenging Behaviours

(without tearing out your hair!).

Working alongside people with Disabilities (and avoiding the Freak-Out Factor!).

Watch this space for more details on dates and times. In the meantime, if you're interested in learning more about VALID give them a call on (03) 427 8299.



Please send or deliver to:

*SpringDale Community Cottage,
P.O. Box 80, Drysdale, 3222, or*

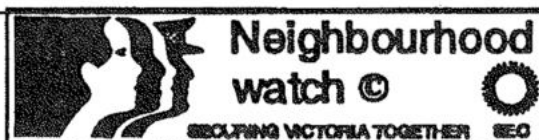
the SpringDale Office at 15 Princess St, or the Drysdale Police Station.

We the undersigned petition for the implementation of the Neighbourhood Watch Programme in Drysdale / Clifton Springs.

Name & Address:

Signature:

.....
.....
.....
.....



Reward for Effort!

Two awards to Drysdale Village Hardware

When Bob & Helen took over Drysdale Village Hardware in October last year, they had a number of goals to achieve:

1. To satisfy as many customers as possible, if not immediately, with minimum delay;
2. To provide a high level of ongoing customer service;
3. To be able to provide expert advice and backup.

Twelve months down the track they believe they are well on the way to achieving these goals, and this has been acknowledged by the "Thrifty Link" group of stores at their recent Awards Night. The Thrifty Link Group of stores numbers over three hundred within Victoria, and down the Eastern Coast of Australia.

The Awards received were :

1. Top Ten Supporters Award;
2. Black & Decker Top Sellers Award.

The awards are based on a number of criteria revolving around corporate image, presentation, customer service, range and knowledge of products, and support to the Group; the Black & Decker Award being based on % increase of product stocked and sold.

Bob & Helen would like to take this opportunity to thank the people of Drysdale/Clifton Springs for their acceptance and support in the last twelve months. "The support and loyalty shown by our customers is what makes awards like these possible," Bob said.



Drysdale Country Women's Association

The Annual Meeting for Drysdale C.W.A. is 11.00 a.m. at The Springs on Tuesday, November 9.

Members, remember to bring your lunch and a posy of flowers, please. Visitors are welcome.

Bellarine Ambulance Fundraising Auxilliary

Dates to remember:

Proceeds to be shared with Ambulance Auxilliary

6 Nov - St Leonards Garden Club will hold a plant stall to help raise funds at St Leonards

21 Nov - Strawberry Fair - Ambulance on display

27 Nov - Garage Sale, Ocean Grove

28 Nov - Fabulous Forties Dance, Parks Hall, Portarlington. \$5, BYO. Tables of 10. Doors open at 6pm. Make up your party & prepare to enjoy maybe a BYO meal or supper, & dance to great old music. Get out the old 40's wardrobe & lots of memories.

For more information ring 59 3296 or 59 2942.

Meetings 4th Tuesday of the month, 7.30 pm, R.S.L. Hall, Princess St, Drysdale.

Help make our community a safer place to live by giving your support to Neighbourhood Watch and returning the coupon on page 14.



The Possums Nest
Shop 9, Village Walk
DRYSDALE
OPEN 7 DAYS
Craft Supplies
Craft & Coffee Afternoons
Thurs. & Sat. 1pm - 3.30pm
Marlene & Sharon Lewin
Ph. (052) 53 2021

Space is available for advertising in future issues of the "SpringDale Messenger". You can't sell anything if no-one knows you sell it. To have your advertising message delivered to over 3,000 homes in the Drysdale / Clifton Springs area, call SpringDale (53 1960) or the Editor Rex Ruwoldt on 53 1754.

ADVERTISING PAYS!



(continued from page 15)

Clifton Springs Garden Club Inc.

I would like to take this opportunity to thank the 75 local stores & businesses who have once again generously sponsored our Annual Spring Garden Show. It is very gratifying that we still enjoy local support in spite of the state of the economy.

Jim Shearsmith,
President.

Bellarina Toy Library

is now open for lending to members on Saturday mornings 10.00 am to 12.00 noon.

Lending is for 2 weeks.

Membership \$20. Enquiries Ph. 53 1960, or call at the SpringDale office, 14 Princess St., Drysdale.

Donations Sought

To comply with childcare regulations, SpringDale Community Cottage is looking for donations of the following :

- 1 x child's potty.
- 1 x nappy bucket with lid.
- 1 x toilet inset.
- 2 x blocks for little people to stand on.

If you can help us, please 'phone 53 1960 or call in to 16 Princess St, Drysdale.

Kinderplay Registration Day

Enrolment 3yr old playgroup 1994.

You are required to attend. SpringDale Community Cottage, 14-16 Princess St, Drysdale.

Tuesday, 16 November 1993, 10am - 12 noon.

Bring evidence of child's date of birth.

Enquiries 'phone 53 1960.

Bingo

Clifton Springs Bowling Club, every Wednesday at 7.30pm. Phone 51 3605.

Wallington Strawberry Fair

Sunday Nov 21, 10am - 4pm.

Over 160 market stalls, food, music, rides, displays, etc.

Adults \$3.50, Pensioners \$2, Children Free. Rugby Park, Lings Rd, Wallington. Follow the signs.

March 8th 1994 - International Women's Day Celebration

Theme : "The Three Ages of Women".

At : Uniting Church Hall, Drysdale.

Time : 1pm - 3.30pm.

Entertainment & Speakers.

Tickets \$5, on sale early 1994.

'Middle Years' speaker is Franciszka Pomaranska.

Regional Co-ordinator of Community Services.

Australian Red Cross.

For more news -

Watch this space !

Copy closes next issue:
November 26.

GUYETT REAL ESTATE **The Professionals**

Let the Professionals help you achieve the best possible price for your home. We are the only agency who can provide the expertise of 2 fully licensed estate agents.

We conduct free market appraisals, property management services, as well as Real Estate Investment Seminars with 3 coastal offices to service all your needs.

**8 HIGH ST.
DRYSDALE**

**Call us today
on
51 2847**