

The SpringDale Messenger

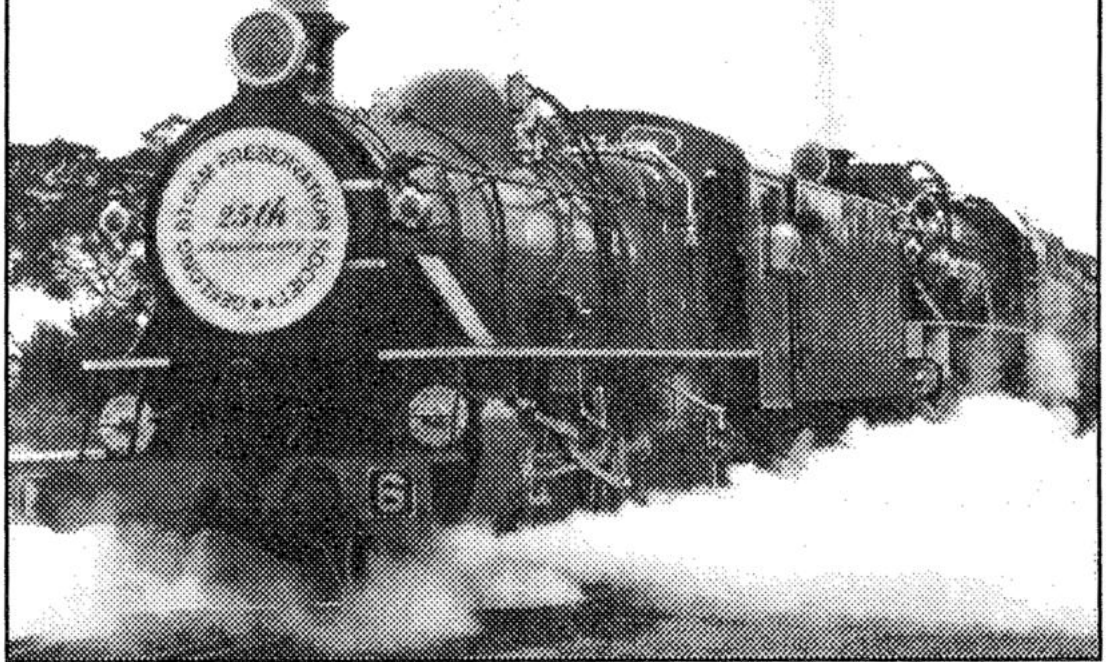
Your Free
Community
Newspaper

Compiled and published by the SpringDale Community Cottage Inc

Circulation 3,700

Vol 5 No.8, November 1995

Our railway celebrates 25 years of operation



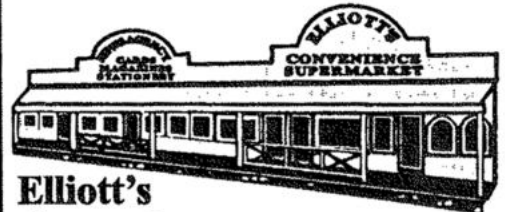
THRIFTY-LINK
HARDWARE

YOUR HANDY
HARDWARE
STORE

**DRYSDALE
VILLAGE
HARDWARE**

(052) 51 3267

THE ARCADE
HIGH STREET
DRYSDALE, 3222.



**Elliott's
Convenience
Supermarket & Newsagency**

**12 High St. Drysdale
Ph 512401/512776**

The SpringDale Messenger

The SpringDale Messenger is compiled by
the SpringDale Community Cottage, 14
Princess St. Drysdale.
Postal: P.O. Box 80, Drysdale, 3222.

Advertising and Enquiries: 53 1960.

Community Groups, Churches, Sporting
Clubs, Service Clubs, etc., are invited to
submit details of their future activities for
regular inclusion in the Community Diary
section, or as articles in the news section as
appropriate.

Copy may be typed or printed with a good
ribbon (preferred), or legibly handwritten
and left at the SpringDale office at 14
Princess St., in the box at Elliott's
Newsagency,
or posted to
P.O. Box 80, Drysdale, 3222.

Next Publication:

Copy deadline: 26th November, 1995.

Distribution: 15th December, 1995.

Views expressed in this newsletter are not
necessarily the views of the Publisher, the
SpringDale Community Cottage.

ADVERTISING AND ARTICLES:

Maureen Naughton,
SpringDale Community Cottage, Phone
(052) 53 1960.

To ensure publication in a specific issue,
copy must be submitted prior to deadline.
Layout and Design of this issue by
Pagination Design Services, Geelong.
Ph: (052) 23 2494



BELLARINE FOOT CLINIC

**Paul B. Shannon,
Lyndal McGuire
PODIATRIST'S
100 The Terrace
Ocean Grove, 3226.
39 Fenwick St.
Portarlington, 3223
64 Bellarine Highway
Newcomb 3219
Ph: 22 4147**

Contents

Nothing great is ever achieved without enthusiasm	3
The Future	4
Lions Club of Portarlington/Drysdale .	6
THE NORTH BELLARINE HOSTEL FOR THE AGED INC	7
NEW BUSINESS IN DRYSDALE	8
DRYSDALE FESTIVAL	9
TAX CORNER	10
The Story Behind The Girl On The Stamp	11
YOUR LOCAL COUNCILLOR SAYS NO TO	12
POINT LILLIAS HAZARDOUS CHEMICAL	12
STORAGE RELOCATION	12
DRYSDALE CROQUET CLUB	13
CIVIL CELEBRANTS	14
LOCAL CONCERNS ABOUT VANDALISM AND YOUTH BEHAVIOUR	15
BONE MARROW DONORS	16
DRYSDALE COUNTRY WOMEN'S ASSOCIATION	16
COVER TO COVER	17
DRYSDALE LIBRARY NEWS	17
GOOD NEWS!!	18
Jobs - Situations Vacant - Jobs	19
BELLARINE HISTORICAL SOCIETY INC.	19
SpringDale Community Cottage	20
BELLARINA TOY LIBRARY	20
CLIFTON SPRINGS GARDEN CLUB INC.	20
MANAGING YOUR ARTHRITIS	21
SPRINGDALE WRITERS LAUNCH BOOK	22
FITNESS AND WELL BEING	22
Community Notices	23-27
How to secure your and your children's future in just two hours.	28
No strings. No money. No pyramids.	28

'NOTHING GREAT IS EVER ACHIEVED WITHOUT ENTHUSIASM'

These words were placed on a banner 25 years ago when the Society was formed, from that 'Enthusiasm' an important tourist attraction to the local area has developed.

December 1966 marked the end of an era in Geelong when the cement works' Fyansford narrow gauge railway ceased to operate. There was a great amount of concern at the time over the eventual fate of the company's locomotives, particularly within the Geelong sub-branch of the Australian Railway Historical Society, and this eventually led to an approach by the sub-branch to obtain one of the locomotives for preservation.

The company originally intended to preserve Locomotive No.6 on a concrete block outside the works, however it was eventually decided that it was more suitable to have the engine preserved as an operating exhibit.

The two people behind this scheme were the late Terry Middleton, then Sub Foreman at Geelong Victorian Railways Locomotive Depot, and Bert Gunsser, who had at the time, retired after many years as a driver at the cement works. Today, these two men would be regarded as the fathers of the society, because if it was not for their foresight the whole thing



Alan Brown - Minister for Public Transport presents Ernie 'Sailor' Willers with his 25 year certificate of Society Membership. would never have got off the ground.

After looking at a number of sites, Belmont Common in Geelong was selected, and a corner of the shed was leased and No.6 was moved. Thoughts of a tourist railway using the South Geelong to Queenscliff Railway were being developed at the time.

FOR HIRE
DRYSDALE PRIMARY SCHOOL
COMMUNITY ACTIVITY CENTRE
SPORTING AND SOCIAL USE

700 CAPACITY
Available weeknights,
limited weekdays and
weekend times.



Enquiries Phone Meryn
on 512272 (9 a.m. - 4 p.m.)

NEO LIFE

Australia's Health Company

**Natural/Organic
Nutritional
Supplements**

- ☒ Food Source Vitamins
- ☒ Organic Minerals
- ☒ Sports Programs for Athletes
- ☒ Weight Control Programs
- ☒ Water Filters & Air Filters
- ☒ Natural Vit E Skin Care Programs
- ☒ 100% Money Back Guarantee

Ring for free brochure on all our products.
Gary & Dawn Caldwell - Ph: 532049



The 'Ex-Tasmanian' Railmotors that were aquired for operation on special trains such as the 'PANCAKE TRAIN', charter specials and operation on days of Total Fire Ban in the region

25 years on

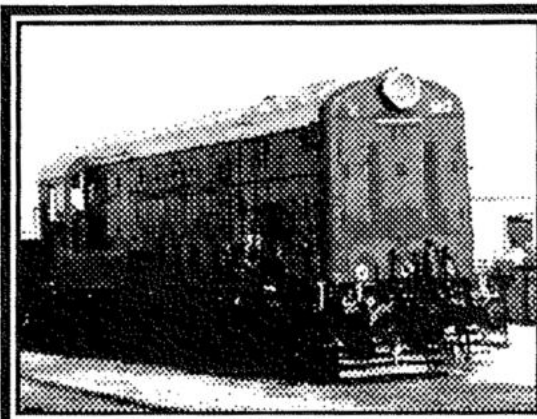
Saturday the 16th of September saw the Geelong Steam Preservation Society celebrate its 25th Anniversary of incorporation and 18 years of operation of the Bellarine Peninsula Railway, which runs from Drysdale to Queenscliff.

The Future

The future of the Society now rests with the extended development of the Bellarine Peninsula Railway services to meet all the needs of a major tourist attraction in the area.

The Railway offers train services from Queenscliff to Drysdale every Sunday throughout the year and operates on selected days during the school holiday periods,

it is planned to continue this pattern of operation with planned development into the specialised charter market where 'event' activities are available, such as



Locomotive X 20 one of two 'Main Line' Diesel Passenger Locomotives aquired for operation on the railway.

CONCEPT CAMPERS

Manufacturers and repairers
of Annexes, Awnings, Tonneaus,
Tarps, Horse Rugs, Boat Covers
Custom Built Camper Trailers
Caravan and Boat Storage
Discount for senior citizens

Phone (052) 532569
61-63 Murrodoc Rd.
Drysdale.

Classy CHASSIS

LINGERIE

Underwear for the whole family

- ♥ CHRISTMAS Gift's
- ♥ Gift Wrapping FREE
- ♥ Lay-By available
- ♥ FITTINGS for your comfort

From BONDS Cottontails to that
SPECIAL Evening

SMART SHOP with SMART PRICES
SHOP 6, 26 HIGH STREET, DRYSDALE.
PHONE - FAX 052 - 53 2230

Wirruna Nursery & Display Garden

Open 8.30 - 5.30 every day

Rare plants, perennials & roses
Native & coastal shrubs
Indoor, courtyard & bonzai plants
Garden furniture
Terracotta, pottery & statues
Fountains, pumps & sundials

660 Wallington Rd.
Wallington, Vic. 3221.
Ph. 50 1971



A picnic in the park - Passengers off one of the special trains enjoy lunch in the park at Drysdale Station as part of their charter service on the train

Birthday party trains, Weddings, social club and Christmas outings. Where visitors and local groups can travel from Drysdale to Queenscliff and enjoy the delights of the area and return hassle free before continuing their journey or returning home.

Mid week and Evening trains are on the increase as this market develops. But with this development comes the major problem faced by all volunteer societies - that of an ever increasing work load for the current membership.

The Society therefore is mounting an extensive drive to increase not only its membership but also its volunteer workforce. If any body has a few hours a month spare and wants to develop or pass on a valued skillset that they have or might need them the railway is the place to do it.

Every possible skill is needed to operate such a venture, where nothing can be overlooked because of the safety requirements.

The train operates the following timetable each Sunday throughout the year and special times over the Christmas holiday period - updated timetable information can be gained by ringing



0055 31 452

the cost is 55c per minute.

All other enquiries about special trains or membership should be directed to

Mr. Mal Thorburn

at Queenscliff Railway Station on

(052) 58 2069 or fax (052) 58 4037

Trains (Sundays throughout the year)

Depart Queenscliff	11.00	2.30
Depart Drysdale	12.05	3.35
Arrive Queenscliff	12.57	4.27

RISTEVSKI HORAN
BARRISTERS & SOLICITORS

Cm. High St. & Springs Rd.
Drysdale

P.O. Box 99
Drysdale 3222

Fax: (052) 53 1815
Phone (052) 51 3453

**CITY
of
GREATER
GEELONG**

Bellarine District
Supports the
SpringDale Messenger
in the interests of better
community communications

**BELLARINE
AUTO
SERVICES**

Quality Mechanical Repairs
Tuning - Servicing
LPG Conversion - EFI
Tyres - Batteries - RWC
Licensed Vehicle Testers

Mortimer St. Drysdale
Proprietors:
P. Bruce J. Pamplin
Ph. 53 1644

Lions Club of Portarlington/Drysdale

are celebrating their
25th Charter Anniversary
on
Friday, 8th December 1995

Over the past 25 years, the Lions Club of Portarlington/Drysdale, by way of fundraising, has contributed to the community with generous donations.

The most significant of these donations was the formation of the Lions Village at Portarlington. 16 Units have been built to this stage, all of which are occupied.

Many years ago, the Club also purchased the Portarlington Picture Theatre, for the use of the local youth of the area.

Other accomplishments and activities of the Lions Club of Portarlington/Drysdale are:

- A. Contributed to the establishment of the Community Health Centre, Portarlington.
- B. Sponsorship of underprivileged children to the Licola Holiday Resort.
- C. Youth Sporting Encouragement Awards.
- D. Support of local Primary Schools - St Leonards, Portarlington, Drysdale and Clifton Springs in funding for computers and books.
- E. Financial contribution to the Bellarine Peninsula Ambulance Service.
- F. Wood supply to underprivileged and aged members of the local community.

- and many more.

There have been over 100 serving Lions Members over the past 25 years who have served the local community. Three of the original foundation members are still with the Club. One Lion Member has also achieved the recognition of District Governor to some 62 regional Clubs.

For any information regarding the Lions Club of Portarlington/Drysdale, contact the Secretary, Lion Laurie Boyes, on (052) 51 3425.

25 years young and still serving the community.

New members welcome!!



D DRYSDALE TIMBER—
Ultimate Hardware

Timber Specialist
Cut to size
Full range of Hardware
Paint and Garden Supplies

PH. 512852
OPEN 7 DAYS
LOT 1 MURRUDDOC RD.
DRYSDALE.

HERITAGE CONVEYANCING

Your Home - Your Heritage
Professional efficient Conveyancing Service
- Specialising in the Bellarine Peninsula
Phone: Julie Stow (052) 51 3950

THE NORTH BELLARINE HOSTEL FOR THE AGED INC

COMMITTEE URGENTLY NEED YOUR HELP

During September 1992 the North Bellarine Hostel for the Aged Inc Committee launched its Public Appeal to raise funds to build a 30 bed hostel for frail aged people of the region.

The hostel, located at 80 Willis Street Portarlington, will be completed by the end of the year and the first residents are expected to move in during early January 1996. It will be managed by the Bellarine Peninsula Community Health Service. Admission is on a needs basis and no applicant will be refused accommodation because of economic circumstances. It is a community based not-for-profit hostel for the aged which will provide a high level of personal care for its residents.

WE URGENTLY NEED YOUR HELP

So far 315 individuals from the area have directly donated \$112,857.00 to our Public Appeal. We know that many local residents have also regularly supported the various fundraising functions arranged by local groups and Service Clubs.

We urgently need to receive another \$32,000.00 in order to reach our Public Appeal Target. Because it will be too difficult for our community based Committee to pay off a debt we want to open debt free. We also want to open the hostel as fully furnished and equipped as possible.

THERE ARE 4572 HOUSEHOLDS IN OUR AREA AND A POPULATION OF NEARLY 12,000 PEOPLE. SO FAR ONLY 315 INDIVIDUALS HAVE DIRECTLY SUPPORTED THIS APPEAL

Most of the public facilities now available to us have been provided as a result of the generosity of past generations. We are now asking the present generation of residents to support this community project. We have over double the State average of elderly people living in our area, and many of them will require residential care as they become unable to cope with looking after themselves.

PLEASE DON'T LEAVE IT TO SOME-ONE ELSE-THIS IS YOUR OPPORTUNITY TO SUPPORT A LOCAL CHARITY. YOU WILL BE ABLE TO SEE THE RESULT OF YOUR DONATION AS THE HOSTEL PROVIDES A COMMUNITY SERVICE FOR MANY YEARS TO COME

To North Bellarine Hostel for the Aged Inc.
P.O. BOX 20,
PORTARLINGTON 3223

Please find enclosed.....as my donation towards the Public Appeal to complete the hostel for the aged project in Willis Street, Portarlington.

Name.....

Address.....

.....

Donations of \$2.00 and over are eligible income tax deductible items. For further information please telephone the President Jean Cull 59 2486 or the Secretary Ann Nichol 59 2763.

Sarah's Fitness Centre

Aerobics Gymnasium Squash
Racquetball Sauna & Massage

Try our LITE PACE AEROBICS

Fridays at 10.30 am with Penny

(suitable for over 50's & Beginners)

33 Murradoc Rd, Drysdale ph 531795

BELLARINE

VETERINARY PRACTICE
7 PALMERSTON ST. DRYSDALE

Mon, Wed & Fri 10.00am - 11.30am
2.00pm - 3.00pm

Tues & Thurs 10.00am - 11.30am
5.30pm - 6.30pm

Saturday 8.30am - 10am

Office only (No Vet)

Mon, Wed & Fri 11.30 am - 12.30 pm

Please Phone: 53 1393

**Calls outside these hours will be
diverted to our Newcomb Hospital**

NEW BUSINESS IN DRYSDALE

Introducing Bellarine Christian Books and Resources, a new shop just opened in Drysdale as a community service. We, Helen and Bill Brew, had a vision for this shop twelve months ago, but it didn't happen at that time. Then about three months ago, we decided now was the time. As there is no other retail outlet on the Peninsula for Church supplies and religious material we saw this as an opportunity to provide a service and also spread the "Good News".

Christian cards, books and stationery are available as well as pencils, stickers and other knick-knacks, tapes and C.D.'s. We also have a range of non-alcoholic wines which provide an alternative at a very reasonable price especially with Christmas coming up.

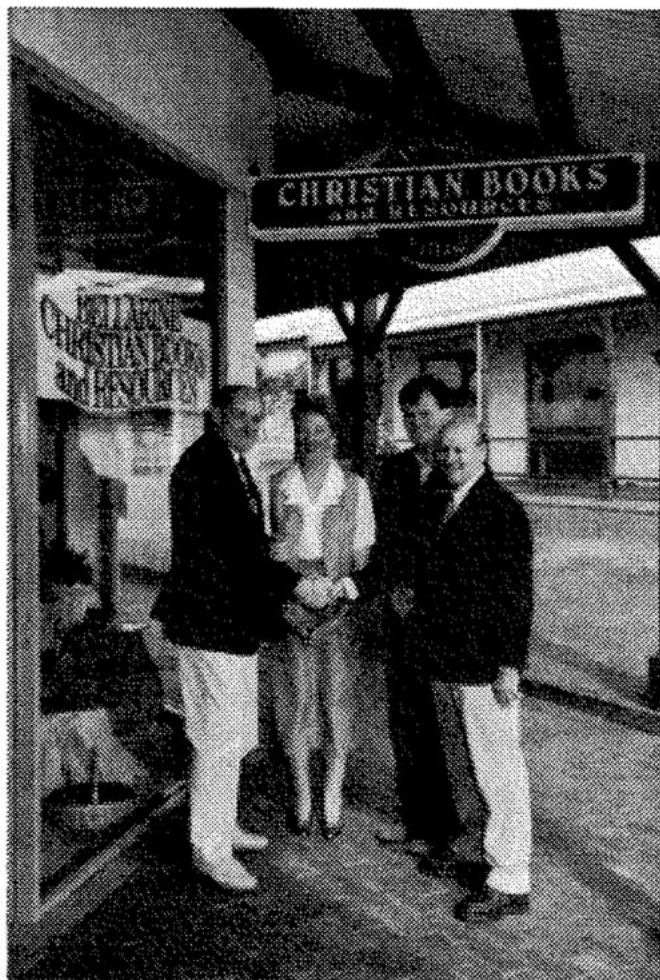
We have access to church supplies, lay-by facilities and gift vouchers. A range of gifts for First Communion and Confirmation and a selection of locally hand-made crafts for you to peruse.

We are endeavouring to provide a peaceful "have a chat" atmosphere with resource materials on many of the "day to day" challenges that life presents. Private counselling by referral is available if desired.

We are situated at Shop 4, The Village Walk, Drysdale, near the Library. We are open from 9am - 5pm Mon-Thurs, 9.00am-5.30pm Friday and 9-12 noon Saturday.

Phone: (052) 513491 Fax: (052) 513495.

*Bill & Helen Brew, Garry Spry, Dennis Blake
Official shop opening - Saturday 14th October*





BELLARINE PHOTOGRAPHICS

- * 1 HOUR PHOTOS
- * FRAMES & ALBUMS
- * LAMINATING
- * CAMERAS
- * BLOCK MOUNTING

Now In Drysdale Village Shopping Centre

Phone **51 3300**

TUCKERBAG
TATTS

 **EXPRESS**

QUALITY MONITORING SERVICE

Why trust your memories to anyone less.



Craig Ash Home & Garden Maintenance

Gardening Carpentry Joinery Painting

Ph. 53 1010 Mobile 015 342 719

DRYSDALE FESTIVAL

This year's Drysdale Festival will be held on Saturday 18th November with the main activities running between 10.00am and 3.00pm.

Presented by the Drysdale Small Business Association the Festival is a free annual event. The local business community offers an interesting day of activities and displays as a way of thanking local residents for their support during the previous year.

Many traders offer super Festival Specials available for the week only and this is a real opportunity to shop locally and save. There will also be a Festival Raffle. Participating traders will give you a free ticket in the raffle with every purchase made during the week ending 18th November. The prizes will all be donated by Drysdale businesses as a thank-you to their customers.

This year Hancock Street will be closed for the first time and activities will range from Wyndham Street and the natural amphitheatre paved area across to a stage in Hancock Street.

The programme is almost finalised. A colourful start with the popular Fijian Song Group and the Scottish Country Dancing Team is planned, a Fashion Parade co-ordinated by Le Shah Boutique in Hancock Street and for the first time a Miss Drysdale Festival quest.

The Miss Drysdale Quest will have three sections - Age 1 to 5 years. Age 5 to 12 years and Age 12 to 16 years - Entry Forms are available from sponsors Hilliers Manchester, Drysdale Dry Cleaners, The Possums Nest and Le Shah Boutique.

You will be able to try Filipino and Fijian food as well as the good old Aussie Hamburger or Hot Dog. For the kids, train rides, a jumping castle and a little kiddies roundabout. Also the very popular Barnyard Memories farm animals display.

For the bigger kids, a Vintage Car Display with some interesting Commercials. Eric will have his bright yellow M.G. available for low cost drives around the block if you want to re-discover that windblown, carefree feeling that you lost some years ago!

The closing is the Hendry Cycles Drysdale Trophy Race which will start at 2.00pm from The Possums Nest in Hancock Street and features some close and exciting road racing through the adjacent streets.

All in all, the Drysdale Festival offers something for everyone. Support your local shopping centre and enjoy a great family day.

Any enquiries can be directed to Keith Winter, President of the Drysdale Small Business Association, on 532269 after 6.00pm.

"Le Shah Boutique"

Ladies Clothing and Accessories

**"November Special
10% off everything"**

on presentation of this adv.

- Lay-by's Welcome...

(Sizes 8 to 24)

15 Hancock St.,
Drysdale.

Ph: 53 2511



Now at two great locations:
Ocean Grove and Drysdale.
Time to upgrade your bike?
Come in and select from our
wide range of mountain
hybrid and racing cycles.
Parts and accessories
for all makes.

Bellarine Peninsula
Cycle Specialists

- Drysdale
High Street
53 2662
- Ocean Grove
Park Lane
551627



Drysdale Village Drycleaners

Shop 2,
21 Clifton Springs Road
Drysdale

TRADING HOURS

Mon - Fri 7.30 am - 5.30 pm
Saturday 9.00 am - 12.00 noon

Phone 51 3990



The Possum's Nest

WOODHEATERS
NOW IN DRYSDALE

"ULTIMATE"
at sale prices

CRAFT SUPPLIES, CLASSES,
BASKETWARE and GIFTS

OPEN 7 DAYS

2 Hancock Street, Drysdale
Phone 532021

TAX CORNER

RENTAL PROPERTIES AND TAX

What deductions can I claim for my rental property?

Rates

These include council and water rates.

Insurance

Interest

If you have taken out a loan to purchase your rental property, the interest charged on the loan is deductible.

Borrowing Costs

This includes loan establishment fees, valuation fees, stamp duty on mortgage documents, legal expenses associated with the mortgage documents and any other borrowing costs. If the total borrowing costs are greater than \$100, the tax deduction is spread over the term of your loan or five years whichever is the shorter period.

Repairs & Maintenance

Examples: - Painting, garden maintenance, roofing and gutter repairs, appliance repairs are a few examples of deductible expenses.

Please note that the Tax Commissioner treats some expenditure on maintaining a property as a capital improvement and not as a repair. Generally, if you replace something with different material e.g. wooden fence with a steel fence, the Tax Commission will not allow a deduction as a repair. You should consult your tax advisor if you are unsure of the tax treatment of any maintenance carried out on your property.

Agents Commission and Letting Fees

Deductions are allowed for the cost of property management fees paid to estate agents for services such as rent collection and letting of properties.

Telephone and Postal Expenses

Telephone calls to tenants, estate agent or tradespeople are deductible expenses. You need to keep documentary evidence of these expenses to substantiate your expense.

Depreciation

Depreciation is allowed on all fittings and fixtures e.g. carpets, floor tiles, furniture, hot water services, stoves, refrigerators etc. lease note that depreciation starts from the day the item is purchased. You need to keep a record of the purchase cost of all items e.g. receipt and/or invoice from supplier.

Capital Construction Allowance

If you have constructed a new residential rental property, the cost of construction can be written off as

a rate of 2.5% per annum over 40 years.

Travel

If you travel to your rental property to inspect the property or collect rent, the travel cost is tax deductible. You should keep a detailed log or diary record of each time you travel to the property including the date, reason for the trip and total mileage on the full return trip.

HOLIDAY HOMES

Expenses incurred in renting out a holiday home are generally deductible on a time basis. What this means is that expenses are deductible on the basis of the number of days the property is let during the year. Please note, however, that if you actively try to secure tenants during periods of vacancy and can demonstrate active advertising and promotion of your holiday home to the public then your deductions for expenses may be claimed during periods that the property is vacant. You should consult your taxation advisor to ensure that you are entitled to claim all deductions relating to your holiday home.

If you would like to know more about investment properties and taxation, including negative gearing, feel free to contact me for an initial free consultation.

Frank Tigani

FREE INITIAL CONSULTATION

- ▼ ACCOUNTING & TAXATION SERVICES
- ▼ SMALL BUSINESS CONSULTANTS

FTA

FRANK TIGANI & ASSOCIATES PTY LTD

53 2992

15 HANCOCK ST, DRYSDALE

The Story Behind The Girl On The Stamp

Doreen Martin recalls the day she stood on the pier at Port Melbourne, waving goodbye to Bern. The wind blew fiercely. She waved with one hand and held her hat down firmly with the other, as the ship sailed out to sea, headed for North Africa. The image of Doreen and the other women on that pier farewelling their menfolk was captured by a photographer and was later reproduced on an Australian stamp. It was also used in the closing credits of the long running T.V. series 'The Sullivans'.

Doreen and Bern Martin lived in Mildura. They had three young children. They'd been married five years when Bern joined the Army in 1939. He was twenty-nine. Earlier that year Doreen's brother Bill had also enlisted.

During the war years Doreen was kept busy looking after the house and her three young children. When rationing permitted, she'd knit socks and bake fruit cakes to send to the boys overseas. Doreen remembers Bern telling her of a chance meeting between him and Bill on a dirt track somewhere in Palestine. Bill was heading towards the front line and Bern was on his way to a makeshift hospital. Bill had received one of Doreen's fruit cakes and the two men sat by the track and ate until the very last crumb was gone. Both men agreed it was the best cake they'd ever eaten.

After serving in the Islands and the Middle East, Bern came home in 1945. He passed away in 1993, aged eighty-two. Sadly, Bill was listed as "Missing in Action", in 1940.

Today Doreen, 82, lives a happy life in the Drysdale Retirement Village. She has seven children and twelve grandchildren.



CMI

SUZUKI

OUTBOARDS
Authorised Dealer

- SERVICE AND REPAIRS TO ALL MAKES OF OUTBOARDS
- SPARE PARTS
- BOATING ACCESSORIES
- TRAILER, REPAIRS AND PARTS
- USED MOTORS
- PROPELLER REPAIRS
- SLIPWAY AND FULL SHIPWRIGHT FACILITIES
- BOAT SALES AND REPAIRS
- FITTING OUT AND MODIFICATIONS

CMI
RIPPLESIDE

Customer Satisfaction
Guaranteed

PH: 722672
LIVERPOOL STREET,
NORTH GEELONG

SMART CARE

LAWN MOWING SERVICE

COMPETITIVE RATES

QUALITY RELIABLE SERVICE

Why do it yourself? - Call now

51 3992

YOUR LOCAL COUNCILLOR SAYS **NO TO POINT LILLIAS HAZARDOUS** **CHEMICAL STORAGE RELOCATION**

Residents of Drysdale, Clifton Springs, Bellarine, Portarlington and Indented Head should be pleased that the City of Greater Geelong Council has overturned the previous policy of the relocation of Victoria's largest hazardous Chemical Storage facility to Point Lillias.

At the Council Meeting on 26th September 1995, Council adopted the following:-

1) Council recommends that it recognises the need for a chemical storage facility in Victoria to service the community's needs and endorses the State Government's move towards establishing a world's best practice facility and, further, supports the view that any decision on a new facility should have regard for the health and well-being of the community and the environment.

2) Council is committed to enhancing the coastal environment and aesthetic quality of the bay, protecting its intrinsic beauty, and encouraging environmentally sustainable oppor-

tunities which entails the continued preservation of its historic and cultural integrity and the internationally recognised ecology of flora and fauna.

3) Council does not support the development of Point Lillias or subsequent downstream industries, which it believes is incompatible with the environment and with other established and developed industries in the area, and supports a location closer to the industries it services.

4) Council, in order to preserve the opportunity to fully develop this vision for Geelong, supports a more comprehensive review by the State Government of the least cost option of developing a "safe world's best practice" Chemical Storage Facility and does not support the relocation of the Chemical Storage Facility to Point Lillias.

Councillor Dennis Blake

Coryule Ward

Tallywood
Boarding
Cattery



Wyndham Park
177 Jetty Road
Drysdale

Spacious individual runs
Inspections welcome.
Vaccinated cats only.
All diets catered for
Pick-up and delivery service
Vivienne Benham
Ph. (052) 51 2246

BALE OUT

Bale Service
& General

**RUBBISH
REMOVAL**

Steve Duffin
55 1351
OCEAN GROVE

**PHARMACY
OPEN SUNDAY
9am-noon**

Weekdays 9am-6pm
Sat 9am-1pm
David C. Pinney
Shop 5/3 Wyndham St.
Drysdale
Ph. 513298

DRYSDALE CROQUET CLUB

DRYSDALE CROQUET CLUB IS ON THE MOVE!!!!

On Tuesday 5th November 40 hardy souls should set off for Olinda to view the rhododendrons and azaleas. However a Greater Power than they intervened, and before leaving Geelong the coach was almost snow-bound.

Croquet players are not easily deterred, so with determination they continued forward until an announcement from base confirmed that Olinda was snow-bound and unreachable.

Croquet players are nothing if not resourceful and after consultation from 'the back of the bus' an alternative suggestion was Garden World at Keysborough and Chadstone Shopping Centre. This was agreed upon and the day was voted a great success, with a gener-

ous contribution to Treasury. Thanks to Marj Smith for her organisation of the day.

On September 8th a combined croquet and bowls promotion day was held in the local shopping centre to publicise a 'Come and Try' weekend to be held on 16th and 17th September. The day proved to be a valuable exercise. A successful weekend resulted from this with a friendly, co-operative atmosphere among the affiliated clubs.

Much mirth was heard as bowls players had a try at croquet games and croqueters tried bowls.

Sunday was quieter in numbers however this resulted in at least 9 people demonstrating a serious interest in the sport. One man took out full membership immediately and 4 people signed up for coaching beginning the next Saturday.

DRYSDALE COMPUTER CENTRE

For all your Computer and Stationary needs.

First Birthday Specials

Optima Sprinter Pentium75 Quad CD Multi Media

8Mb Ram 545HDD, Win95 Only \$2745.00

HP660C Printer \$795.00

HP 5L Printer \$865.00

Canon BJC4000 Printer \$650.00

Stationery

HP 500 Series Ink Jet Cart 51626A \$47.50

Reflex A4 White Paper \$7.95

All prices Include Sales Tax

Call for other prices

Shop 7, 3 Wyndham St. Phone/Fax 531 360

CIVIL CELEBRANTS

What Are They And What Do They Do?

Civil Celebrants in Australia generally conduct wedding, namegiving and sometimes funeral ceremonies for the many people who wish to 'celebrate' these important occasions with their family and friends but do not wish to do so in a religious ceremony or environment.

Prior to 1973 when Senator Lionel Murphy became Attorney-General and introduced the Civil Marriage Celebrant Programme non church-going couples had no choices other than to try and persuade a priest to hold what for many was an insincere religious ceremony or to endure the cold austere surroundings of the local Registry Office.

Civil Marriage Celebrants enable all Australians to properly celebrate their marriage 'at any time or any place' in the full traditional style with wedding dresses, groomsmen and bridesmaids, limousines, expensive photography, slap up meals, speeches and champagne or in a way that the couple feel reflects their personal values and aspirations (or simply their pocket), which may be a simple wedding at home or in a beautiful park followed by a light meal or barbecue.

Some marry in locations symbolic to their love and commitment or their hobbies or where they first met. Venues range from mountain tops at dawn for climbers, to torch lit caverns for underground explorers - from hot air balloons to underwater ceremonies for scuba divers. But these are exceptions to the norm.

Most marriages are solemnised at places like The Heights, the Botanical Gardens, Quarry Park, the beautiful garden of a friend or relative or at a reception venue such as the Clifton Springs Centre.

The role of the celebrant is to assist the couple to have the ceremony they want - whatever that may be. The couple choose the day, the time, the venue, the style of dress - could be formal, casual or even themed as medieval or pirate costume or whatever - and they choose the words of the ceremony. Normally the celebrant will supply an assortment of suitable vows, readings etc. but the couple can compose the whole ceremony and provide whatever music they wish. The minimum legal requirement is a statement during the course of the ceremony that each party takes the other to be their lawful wedded partner.

Two local persons have recently been added to the ranks of Authorised Civil Marriage Celebrants and they are Anne Cowden Tel. 513319 and Keith Winter Tel. 512517. They are both available to advise and assist you on Weddings and Namegiving Ceremonies so feel free to contact them for no-obligation information.

It should be remembered that now is the time to book your celebrant and reception venue for the wedding season in next year's Spring.

CIVIL CELEBRANT

**Anne Cowden
P.h. 513319**

Civil Celebrant

Keith Winter

**Weddings, Namegivings
and Special Ceremonies
PHONE: 532269**

Suzanne Margan Cooking

**Cakes for all occasions
Private Dinner Parties**

PH. (052) 512205

LOCAL CONCERNS ABOUT VANDALISM AND YOUTH BEHAVIOUR

I recently received a letter from Councillor Dennis BLAKE of Coriyule Ward regarding two letters he had received from Drysdale Shopkeepers. Cr. BLAKE forwarded me copies of the letter to:-

"keep me informed of community concerns"

about vandalism and youth behaviour in the Drysdale Shopping Centre, and to:-

"seek advice for any action my Council may be able to take, and I would be pleased to be involved in any Community action to correct the situation."

I have therefore decided to pass Cr. BLAKE's request on you, the parents/residents of Drysdale and Clifton Springs, and may I ask you to take time to write to either of us on this subject.

Firstly, I want to make it clear that Police have to know about these things while they are happening. It is not very useful to find out about damage offences or youth behaviour such as under age drinking in a "by the way" conversation days or even weeks after the event has taken place.

There are two reasons for this. The obvious one is if we can catch offenders on the spot they can be dealt with and the matter should end there. The second is that information is needed to properly task Police action to times and days where it is needed.

For Police to maintain order and prevent crime we need to be kept informed.

Two questions that Police are continually asked are:-

1. Why do the kids have to hang around the Shopping Centre?
2. Do their parents know where they are and what they get up to?

Does it still happen that youth A tells his parents he is visiting youth B, and vice versa so they can wander up to the shopping centre to "hang out"? Do parents check on this small minority that are painting so bad a picture for the majority?

Recent publicity about a local youth group cited lack of parental interest as a reason why it may be forced to close. What is needed there are mature adults/parents that are "cool, relaxed people - not bossy - who will not give the feeling of being chaperones". Can you help?

Another question that has been asked. Is the lighting adequate around the Shopping Centre? Can the council assist with better or higher or more durable lighting?

I will be very pleased to receive any information at the Police Station at 11 Eversley Street and I am sure that Cr. BLAKE will be similarly pleased by your letters addressed to him at Post Office Box 104, Geelong 3220.

**SERGEANT GREEN
DRYSDALE POLICE.**

Why do it at night
when we can do
it from as little as **\$2.15**
per day

BASIC BOOK-KEEPING



It's cheaper than doing it yourself
Contact Cliff Stride
Mobile 018 526 187
After Hrs 53 1829

**ROTARY HOEING
& GRASS
SLASHING**



Large &
small areas
IF YOU NEED:

- A VEGI PATCH
- NOXIOUS WEED SPRAYING
- A NEW LAWN
- GRADING
- SCARIFYING
- HARROWING
- PLOUGHING

Contact
Frank &
Tegwen Vella
53 1515 or 018 593 992

**Builder &
Carpenter**

Michael Kragh

**Renovations
Extensions
New Homes**



018 108986 or 51 3477

BONE MARROW DONORS

If you are aged between 18 and 50 and are willing to register as a Bone Marrow Donor, you could be helping someone with Leukaemia or other certain types of illnesses, which make the patient unable to produce the new blood cells needed to fight infection and recover.

First you will be given an interview, then a blood sample is taken for tissue typing. The result is then put on a confidential computer record. When a patient needs a transplant a number of possible donors will be asked to attend for additional blood tests to identify the donor who matches the best. The chance of

being selected as a Bone Marrow Donor is relatively small.

For more information please contact The Bone Marrow Donor Institute Inc on 039 3427 888 or you could help by donations of good clean clothing, household goods etc. to the Bone Marrow Recycle Shop, High Street Drysdale. Open Monday to Friday 10 - 4pm, Saturday 10 - 1pm. Any enquiries phone 512507. The shop is run by volunteers. All proceeds from sales go to the Bone Marrow Institute.

DRYSDALE COUNTRY WOMEN'S ASSOCIATION

Well, Showtime is over for this year and the next one starts in March for the Bellarine Agricultural Show. A number of helpers went to Melbourne Show to assist in the C.W.A. rooms with the catering --- a lot of work but enjoyable.

Geelong Show also had a good number of our Branch helping to feed the "mobs" for the three days, and this is a chance we have to see members we otherwise don't meet. If you are new to the area, or recently retired why not join us? We have speakers, small work projects, usually for a hospital or the like, (if you want to take part). Flower competitions at each meeting and a lot of friendly people to talk to. Meeting Day is the 2nd Tuesday--1.30pm at the Springs in the room near the pool--Craft Day is the 4th Tuesday 11am B.Y.O. Lunch and is a great time to meet and talk to members.

We would love to see new members.

Shirley Lindsay



Kings

FUNERAL SERVICES

25 Myers Street, Geelong
Phone 22 3688, 21 5760

Serving the families of
Geelong and the
Bellarine Peninsula
with understanding
and care

Alinga Nursery
Pty Ltd

Cnr Jetty Rd & Railway Cres
Drysdale

Large range of outdoor
Plants, natives, trees,
shrubs, ground covers,
ornamental trees.



**Kerrie & Neil
Muhlhan**
OPEN 7 DAYS
Ph 53 1299



The Lifeline Shop

Unit 1, 19 Murrodoc Rd.
Drysdale
Phone 53 2168

Bargain Clothing
Furniture, Clothing, Brick-a-Brac
Gratefully accepted
Profits from our shops
help fund Lifeline's 24 hr.
Telephone Counselling Service.

COVER TO COVER

DRYSDALE LIBRARY NEWS

Soon you will be up to your necks in Christmas preparations and compiling reading lists for the long hot holidays ahead will be the last thing on your mind. I've asked library staff from other Branches to contribute to a reading list of their favourite reads throughout the year to assist you in making a choice - and here they are:

NOVELS: (Australian):-

"It's raining in Mango"/Thea Astley
 "Blockbuster"/Jade Forrester
 "A shoulder to lean on"/Jade Forrester

-0-0-0-0-0-0-

(Horror):-

"Rosemadder"/Stephen King
 "Icebound"/Dean Koontz

-0-0-0-0-0-0-

(General):-

"House of spirits"/Isobel Allende
 "Hollywood Kids"/Jackie Collins
 "Skallagrigg"/William Horwood

-0-0-0-0-0-0-

(Crime):-

"The white rose murders"/Michael Clyne
 "Bravo for the bride"/Elizabeth Eyre
 "A is for Alibi"/Sue Grafton
 "Snow falling on cedars"/David Guttererson

-0-0-0-0-0-0-

(Non-Fiction):-

"Sold: a story of modern day slavery"/Zana Muhsen

"Proved innocent: the story of Gerry Conlon & the Guildford four"/Gerry Conlon

-0-0-0-0-0-0-

(Biographies):-

"Child Star"/Shirley Temple (Excellent)
 "Audrey" (Hepburn)/Alexander Walker
 "Daphne Du Maurier"/Margaret Forster

-0-0-0-0-0-0-

There's something new by favourite authors arriving constantly, so call in and start organising your holiday reading early. A reservation now will see your stockpile ready for Boxing Day.

Ring 51 3855 to Renew, Reserve or for Reference help.

Margaret Skeen



CONCRETE CLEANING

Reduces slip and improves the appearance of

- * Driveways
- * Patios
- * Pathways
- * Pool Surrounds
- * B.B.Q. Areas

Phone 51 3916

**QUALITY
OUTDOOR
FURNITURE**

The Possum's Nest
 Drysdale
 (052) 53 2021

**Bellarine
Hearing Services**

Geraldine McClumpha
 B.Sc.Dip.Aud. M.Aud. S.A. (C.C.)
AUDIOLOGIST

- * A.H.S. accredited provider
- * Quality Hearing Aids
- * Professional hearing assessment

157 Myers St. Geelong
 Ph. 29 6407
 Now at Drysdale
 every Tuesday

GOOD NEWS!!

FROM CLIFTON SPRINGS BAPTIST CHURCH.....where you can meet new friends and experience friendship with God.

There is no doubt about it! We are gripped by a very deep economic recession that will probably get a lot worse before it even starts to improve.

In spite of the smooth talk from Canberra, we see the evidence all about us in Drysdale/Clifton Springs. Shops stand empty for too long. Retail businesses close all too often. Almost all businesses of various types are experiencing lean times. Ordinary people are losing their jobs and finding it difficult to find alternative employment. The budgets for families are as tight as they have ever been. Our young people are finding it hard to get jobs and are often dissatisfied with the jobs they get. Our senior folk see their superannuation or savings being whittled away.

The future for many is uncertain. Security and predictability are gone. At times like this doom and gloom can descend. We might battle on alone and hope that good times come soon. Alternatively, we can have faith in a God who will provide all our needs, says the Bible. And we can also join with other people at church who might be struggling too but who will journey with us through life. Somehow, a friendship with Jesus Christ and meeting new friends at Church can make the load a little

easier to bear and hope for the future a lot brighter.

As a church we would like to help those who are struggling through tough economic times. We are happy to pray over the phone at any time for people and in certain instances we can deliver weekly food parcels to people's homes.

We enjoy our time together as a Church every Sunday morning at 10.00 am at 45 Central Road. You are always most welcome to visit.

For prayer or any queries, please phone 531-833 or 512-973.

Warmly,

David Sharrock.
Pastor.



**SpringDale Community Cottage
Present**

Line Dancing

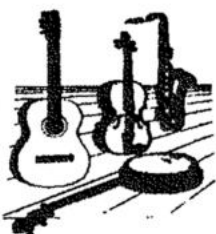
Sat. afternoons 2.30 - 4 p.m.

at SpringDale Comm. Cottage

Admission \$3

Beginners and experienced all welcome

Enquiries Ph 53 1960



Jobs - Situations Vacant - Jobs

WANTED: - BLUEBERRY PICKERS IN JANUARY & FEBRUARY '96

It is desirable that the Applicants should live not far from Drysdale, for their own convenience.

An Aptitude Test will be arranged for all Applicants before 10-12-95.

Please apply by mail to - Manager, Tuckerberry Hill,
35 Becks Road,
Drysdale. 3222.

giving Name, Address, Phone No., and Age if under 21 years.

BELLARINE HISTORICAL SOCIETY INC.

A Cake Stall will be held on Saturday 18th November in the Drysdale Village Shopping Complex for urgently needed funds, any support will be much appreciated.

Also, please keep in mind Saturday, 20th April for a Pioneer Family Day ----- more about this later, but we want everyone involved, it will be a Community project and we hope, a lot of fun.

But our urgent need at the moment is CAKES etc. and customers for the 18th November.

Shirley Lindsay
Honourable Secretary
Bellarine Historical Society

Mary's Beauty Spot

1 HIGH STREET, (Old National Bank Building), DRYSDALE, PHONE 53 2330

New Mens haircutting room

**Professional, Affordable Hairdressing for all the family
HAIRDRESSING**

ACRYLIC NAILS

WAXING

FACIALS

LASH & BROW TINTING

BRIDAL & DEBUTANTE HAIR STYLING & MAKE OVERS

GIFT VOUCHERS AVAILABLE

CUSTOMER PARKING

CRECHE

CALL IN AND SEE MARY, TRACE, WILMA AND LEE

SpringDale Community Cottage BELLARINA TOY LIBRARY



SpringDale
Community Cottage
Bellarina Toy Library

Join the Bellarina Toy Library and give your family access to an exciting range of 108 toys and 50 puzzles.

Stimulate your children with a new toy and puzzle weekly or fortnightly, whichever suits your schedule. We cater for children aged up to 6 years.

REGISTRATION DAY

Saturday 4th November also our Second Birthday!!

Yearly fees are due on this day. **Saturday November 25th** will be the last day for payment to secure current members' places for 1996.

NOTE: Toy Library will be closed on November 11th due to a Women's Workshop class being run by SpringDale. (It sounds FANTASTIC! Why don't you join us?)

We are providing the opportunity for new members to register during November. Bellarina Toy Library is open on Saturdays between 10.30 & 11.30am in the Occasional Care Room at the rear of SpringDale Community Cottage at 14 Princess Street, Drysdale.

FEES ARE VERY REASONABLE

CLIFTON SPRINGS GARDEN CLUB INC.

Our 12th SPRING GARDEN SHOW will be held Saturday 18th November at the Drysdale Uniting Church Hall. 11am - 4.30pm

AFTERNOON TEA - PLANT STALL - CAKE STALL

PLEASE help with this Show by entering flowers, cooking, produce, jams, etc.

Schedules available 501624, 513613, 532039.

ALSO come and see the flower show, entry is only \$1.00 adults, pen/students 50c. This year part proceeds go to the North Bellarine Hostel for the Aged and we hope to have a good amount to help them.



Giftwrap

SEE OUR EXTENSIVE RANGE OF
1996 CALENDARS: INCLUDING ANNE GEDDES
10% OFF CALENDARS WHEN YOU
BRING THIS ADVERTISEMENT.
LIMIT ONE PER VOUCHER.

Shop 5 Drysdale Village Shopping Centre Drysdale.
Phone: 052-531856

DRYSDALE PHYSIOTHERAPY

AND

SPORTS INJURY CLINIC

512 958

27-29 High Street
DRYSDALE, 3222.



MANAGING YOUR ARTHRITIS

TUESDAY 21ST NOVEMBER, 1995

9.45AM - 2.30PM

at

**OCEAN GROVE COMMUNITY HEALTH CENTRE
Cnr Presidents Avenue and The Avenue
Ocean Grove**

**An informative and practical approach to
managing your arthritis**

SPEAKERS:

**Dr. Nigel Wood, Rheumatologist
Lyn Simms, Occupational Therapist
Karen Rhodes, Podiatrist
Rita Federico, Dietitian
Faye Price, Support Group Facilitator
Liz Perez, Physiotherapist**

**LUNCH PROVIDED BY THE BELLARINE PENINSULA
ARTHRITIS SUPPORT GROUP**

COST: \$2.00

**BOOKINGS ESSENTIAL, PHONE EARLY 58 1944
BEFORE MONDAY 13TH NOVEMBER, 1995.**

ELECTRICAL CONTRACTOR

Terence Britt

HOUSE WIRING

SPECIALIST

"A" Licenced No. 25316

L.E.C. No. 11088

Ph. 51 3727

Mobile 018 521 870

**CARPET
STEAM
CLEANING**

**MARICK CARPET
CLEANING**

DICK BOLAND

Ph 59 2217

Mobile (018) 317 065

Carpets, Lounge Suites

Car Upholstery

Stain Guard Available

FREE QUOTES

**Mortimer's
Petrol Station &
Convenience Store**

**97 High St. Drysdale
Ph. 51 2603**

- * Petrol, Autogas**
- * Bait and Fishing Supplies**

CAR WASH NOW OPEN

Wash \$3.00

Wash and Wax \$4.00 with petrol

OPEN 6.00 AM - 10.00 PM

SPRINGDALE WRITERS LAUNCH BOOK

'Differences sing with the strongest voice,
Where Harmony is each singer's choice.'

SPRINGDALE WRITERS is committed to maintenance and development of the unique differences of its members, and to the concept of the distinctively individual nature of true creativity.

It is in the combination of differences that this first anthology - HARMONY - unites their wide range of format, styles and subject matter into a harmonious whole.

SPRINGDALE WRITERS formed in 1994. Writers come from a wide age range, very different backgrounds, and cover a broad range of interests.

The most notable feature of this group of writers is their shared joy. Despite their pronounced differences, each is able to experience the joy of creativity and achievement of their fellow writers.

Interested persons are invited to the Official Launch of 'HARMONY' by Dr. Brian Donovan.

Time: 5 pm

Date: 2nd December

Place: New Wing, Springdale Community Cottage.

Confirmation of attendance: Phone 513259 - before November 27th.

Book Orders: at \$5 each. Phone S.C.C. 531960 or 513259

FITNESS AND WELL BEING

Many people quite often ask the same question; which is the "best" form of exercise?

This question would of course have a different answer for different people. There is no "best" form of exercise, but there are appropriate types.

Refer to the basic FITT principles;

F = frequency (at least 3 times per week)

I = intensity (based on your current fitness level)

T = type (form of exercise)

T = time (at least 30 minutes)

The type of exercise you choose should be enjoyable, and be at a suitable level of intensity to be sustained for at least 30 minutes per

session. There is no point choosing, for example jogging, if you haven't exercised for quite a while. The intensity of the jogging would be too severe for your current fitness level; walking in this situation would be a much better choice.

With so many forms of exercise to choose from, enjoyment should be a prime factor to consider.

*There are many more types of physical activity to partake in, other than those mentioned above; consider also team sports, martial arts, rowing, etc, etc.

Sharyn Clutterbuck
Fitness Instructor
VicFit 3382

Selina's
HAIR for MEN

Phone 504292

'NOW OPEN'

at

Shop 2, 49 Ash Rd. Leopold

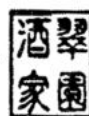
- NO APPOINTMENT NECESSARY -
Mon-Wed 8.30-5.30. Thurs. 8.30-9.00.
Fri. 8.30-6.00. Sat. 8.30-2.00.

**Grills,
Double & Co.**
**BARRISTERS &
SOLICITORS**

"Gallop House"
15 Hancock St.

Drysdale
Ph. (052) 53 1966

Chui Yuan
Chinese Restaurant
(B.Y.O.)



TAKE AWAY & HOME DELIVERY
FUNCTIONS & GROUP BOOKINGS
A SPECIALTY
QUALITY & CLEANLINESS ARE
PARAMOUNT
REASONABLE PRICES
* \$5.00 LUNCH SENSATION MENU

Ph. 53 1788

Shop 2, 26-28 High St. Drysdale, 3222.

COMMUNITY NOTICES

GEELONG GEM &

MINERAL CLUB

INC. GEM &

MINERAL SHOW

TO BE HELD AT NEWCOMB COMMUNITY CENTRE

Cnr Bellarine Highway & Wilsons Road, Newcomb.

Melways Map Ref. 228

SAT. NOV. 11TH - 10AM - 6PM

SUN. NOV. 12TH - 10AM - 5PM

ADMISSION

ADULTS \$2.00 JUNIORS (U/14) 50C

DISPLAYS - DEMONSTRATIONS - SALES

"GEMINI" INTERNATIONAL CABOCHON COMPETITION

FLUORESCENT MINERALS DISPLAY
FLORENTINE GEMSTONE

MOSAICS SPHERES AND EGGS.

GEM CUTTING, OPALS, FACETING, JEWELLERY, HANDCRAFTS

MATERNAL AND


CHILD HEALTH

CHANGES

It is with regret that nurses Linda Tomkins & Rita Ambrose will be relocated shortly. The new nurse will be Marg Craig. She is contactable at Clifton Springs Tuesday & Friday & some flexible days
Phone 512538

Drysdale on Wednesdays

Phone 512291



WISE GUYS
MENS HAIRSTYLIST
"Its the cut that counts"


So come and see
Wendy, Jenny & Kelly
for all mens and boys styling

* STUDENT AND PENSIONER *
DISCOUNTS

No appointment necessary

Shop 1,
Wyndham Street,
Drysdale.
(Next to
Bakers Delight)

53 2503





ANGELS ON HIGH



LICENSED RESTAURANT
NOW TAKING BOOKINGS FOR CHRISTMAS LUNCH

For
a
"Heavenly"
Christmas, let our
"Angels"
Serve you a 4-course
luncheon

Adults \$45.00	Children 4-12 yrs. \$20.00
-------------------	-------------------------------

Children 3 yrs and under free

**CHOOSE FROM - 2 Soups, 3 Entrees, 4 Mains, 4 Desserts
& Tea/Coffee with after dinner mints**

Nuts, Lollies and Bonbons on each table

16A High St. Drysdale
Phone/Fax 53 1440

DRYSDALE FIRE

BRIGDE

'GARAGE SALE'

The Brigade will hold its annual 'Garage Sale' (including the usual Cake Stall) at the Fire Station and static display at the local 'Traders Fair' on Saturday 18th November from 9.00am to 1.00pm.

Any donation of saleable goods of any description (good clean clothes, books, bric-a-brac, furniture, equipment, electrical goods, tools, toys, etc.) or a donation would be appreciated and can be left at the Fire Station on Sunday morning 12th November, or Friday 17th November between 1.00pm and 8.00pm. Goods can also be left with Alan and Lesley Taylor at 29 Clifton Springs Road or the Brigade will collect from your home by phoning Bernard Filbay on 512495 or Kel Davis on 512351.

Your assistance in our Fund Raising effort would be very much appreciated.

COMMUNITY

INFORMATION &

REFERRAL

ASSOCIATION INC.

Free, confidential impartial advice and information

FOR ANY QUERY BIG OR SMALL
YOU CAN PHONE OR VISIT US AT

Corio Community Health Centre
Phone: - 75 6772

South Barwon Community Health Centre
Phone: - 44 2601

"CHRISTMAS

WISHES"

Bellarine Jongleurs, Junior Theatre Group are well underway with rehearsals for their end of year production Christmas Wishes.

A modern tale set in Santa's workshop where dolls, teddies and fairies come to life to enchant the audience.

Meet all the traditional characters associated with Christmas including Santa who has a special wish of his own.

Hepner
Funeral Services

We Care

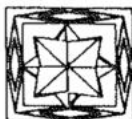
Ph. 561626 all hours

*For information or advice about
funeral planning. Ocean Grove
office open every Saturday*

9.00 - 1.00 pm

Neighbourhood Centre, 77 The Parade

**Drysdale
Knit & Sew**



**Shop 6,
3 Wyndham St.
DRYSDALE.**

**Patchwork & Quilting
Supplies, Wool,
Haberdashery**

Ph. 51 2116



18-20 HIGH ST. DRYSDALE.

OPEN:

**Monday, Thursday, Friday, Saturday
Sunday 10am - 5pm**

New Members always Welcome

**PORTARLINGTON
HOLIDAY RESORT &
INDOOR POOL CENTRE**

Smythe St. Portarlington
Swimming lessons
Water aerobics
Hydrotherapy sessions
Squad training
Open 7 days

Contact:

**Michael and Sue Boylen
Proprietors**

Ph: (052) 59 2910

A story filled with laughter, song and dance, "Christmas Wishes" will bring the spirit of the festive season to you and your family.

Directed by Lorraine Hall and Barbara Reeves.

Showdates are 29th, 30th November and 1st December.

Tickets are available by phoning. 53 1439

ANGLICAN CHURCH

PARISH OF

BELLARINE

The parish, comprising St. Paul's at St. Leonards, St. John's at Portarlington and St. James' at Drysdale, has recently been advised of the appointment of a new incumbent.

Her name is the Rev. Carli Hannah who will be coming from the Parish of Charlton. Her previous appointments in the ministry have been to All Saints, Newtown, Holy Trinity, Kew and St. Paul's Cathedral, Bendigo.

Prior to entering the ministry, Carli was a registered nurse at Mater Hospital, Brisbane and a midwife at the Royal Women's Hospital, Melbourne.

Arrangements have been made for the Induction Service to be held at 8 P.M. on Monday, 18th December at St. John's Church. The Archbishop of Melbourne, the Most Reverend Dr. Keith Rayner, will be in attendance.

Everyone is invited to this auspicious occasion.

PARENTS & TEACHERS

AN INVITATION IS EXTENDED TO YOU
FOR AN EVENING WITH

DR. MICHAEL CARR-GREGG

THURSDAY 26 OCTOBER 7PM-9PM
NATIONAL WOOL MUSEUM

TELEPHONE 22 3130
CITY OF GREATER GEELONG
YOUTH SERVICES

DRYSDALE

BOOTSCOOTERS/

LineDancing

All are invited to watch.

Free of charge.

Wednesday St. Thomas's Hall

Thursday St. James's Hall

Callers: Rob and Jade

Please phone 53 1483 for information

COUNTRY UNLIMITED

BARLEY UPHOLSTERY

SPECIALISING IN RECOVERING ALL
TYPES LOUNGE FURNITURE,
KITCHEN CHAIRS, ANTIQUES ETC.

9 Mortimer St.
Drysdale, 3222
Ph. 51 2487

DRYSDALE VILLAGE PIZZA & PASTA BISTRO

OPEN 7 DAYS

Dine in, Take Away
for Home Delivery



Ph: 51 3937

If visiting the Bellarine Peninsula, drop in for a meal at the

DRYSDALE HOTEL

- Friendly atmosphere
- Counter lunches and teas every day including Sunday
- Cosy log fires
- Geelong's first Pub-TAB facilities



LUNCH 12.00-2.00pm - TEA - 6.30-8.00pm

Your host David Leahy and family

High Street, Drysdale. Phone 512301

(On Geelong-Portarlington Main Road)

DRYSDALE

PRIMARY

SCHOOL

PARENTS CLUB

CAR BOOT SALE

ON:- Saturday 11th November 1995
at Drysdale Primary School Asphalt
from 9.00am - 2.00pm

For bookings phone:-

Sandy 51 3304 or

Jan 53 1042

\$10.00 per car

proceeds to D.P.S. hall extension

So get all those unwanted treasures together,
pop them in the boot and bring them along.

PORTARLINGTON

PRIMARY SCHOOL

MARKET

The Portarlington Primary School will hold their monthly indoor/outdoor market on the last Sunday of each month.

The November market will take place on Sunday November 26th, 9.00am - 2.00pm. For further information phone Jill Davis on 59 3318.

YOU ARE ALSO INVITED

TO TAKE PART IN

'ACTIVE FOR LIFE HEART WALK'

SUNDAY 26 NOVEMBER 1995

4 KILOMETRES OR 6 KILOMETRES

Surface suitable for wheelchairs and pushers

Registration Time: 9.30am at "Littles House"

Portarlington Primary School

\$3.00.....per person

\$6.00.....per family

Walk commences at 10.00 am and will finish adjacent to Sunday Market, Parks Hall
BBQ and Refreshments will be for sale.
For further information phone Beryl Bell 57 3155

Geelong Podiatry Centre **PAUL GRAHAM**

B. App. Sc. (Pod) M.A. Pod A

PODIATRIST

- Diabetes management and care
- Ingrowing or damaged toenail care
- Lower limb, ankle and foot aches and pains

GEELONG
209 Malop St
Phone 23 1531
MON-THURS

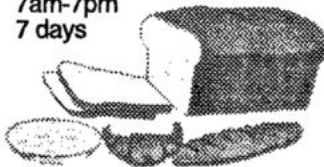


DRYSDALE
8 Carolanne Drive
Phone 51 2958
FRIDAY ONLY

Caring for your family's feet

BREAD Plus

7am-7pm
7 days



19 Clifton Springs Rd.
Drysdale, Vic. 3222

Phone: **53 2490**

YOUR NEW BAKERY

Rosse McConnell

ELECTRICIAN

Domestic, Commercial
& Industrial
Wiring & Maintenance

Phone: Mobile:

51 3620 018 524 038
NECA REC.5264

4 Bennett St. Drysdale.

Salvation Army Family Stores

Mortimer St.

Drysdale

Ph. 51 2475

Plenty of Bargains

The Place to Shop

Come and see us

We are here to Help You

"KINDERPLAY"

REGISTRATION DAY - WEDNESDAY NOVEMBER 15TH

10.00AM - 12 NOON

If you have a child who will turn 3 years of age before April 30th 1996 and will attend Pre-school in 1997, then you are eligible to register your child for Kinderplay.

Kinderplay is a parent-run playgroup for children in their Pre-Kindergarten year. Parent participation is a pre-requisite. Kinderplay groups have a maximum of 10 families and families are grouped according to the Pre-school the child will attend the following year. The venues and session days for next year have not been confirmed.

Registration Day for 1996 is Wed. Nov. 15th from 10.00am - 12 noon at SpringDale Community Cottage, 14 Princess Street, Drysdale. Registrations to be done in person. Bring evidence of child's date of birth - Birth extract. An enrolment form will need to be completed on the day. The cost to register is \$5 which will cover administration costs.

Any further queries will be answered at the Cottage on Registration Day.

SPRINGDALE CHILDREN'S ACTIVITY SESSIONS

During Term 4 the following sessions are being offered:

Tuesday 9.30am - 12 noon

Thursday 12.30pm - 3.00pm

The program caters for children between 0-6 years of age. The Centre is available for permanent or occasional care. To register the cost is \$5 per family. The cost per session is \$7.50 per child. The staff are experienced and qualified and provide a stimulating and happy environment for the children.

Register at SpringDale Community Cottage. Further inquiries phone 53 1960. You are welcome to visit during a session.

DRYSDALE REMOVALS & STORAGE

Local, Country,
N.S.W. & S.A.
PH. (052) 51 3674

Trinas's Hobby Ceramics

Day & Evening

Classes

Duncan Products

Greenware &

Firing Service



20 Elgin St., Drysdale.

Ph. (052) 513 795



Martin's Frames

Stephen Martin

**CUSTOM PICTURE FRAMING
& MIRRORS**

Ring for
appointment

**DRYSDALE
(052) 53 1696**

Fawlty Towers

HOMEMADE GOURMET FOODS
TAKE-AWAY COFFEE LOUNGE

Join us in our cosy lounge for the best coffee, yummy cakes and eats in town Open 7 days a week, Sat. and Sun. 9 am to 4 pm Orders taken for special occasions Prop. Trudy McPherson Shop 6, The Arcade, Drysdale, Ph. 513312



*Phil
Hodgkinson
AH 55 1043
019 679 426*



*Brett
Thompson
AH 53 2364
018 520 354*



*Phil
Cumming
AH 51 3047
018 599 232*

How to secure your and your children's future in just two hours.

No strings. No money. No pyramids.

Well-chosen real estate has always out performed every form of investment. That looks set to continue.

That's why Guyett Real Estate have introduced Property Bank, the first complete answer to real estate investment.

Put simply, if you own or have enough equity in your home, then you have the base to build wealth through property such as home units, flats, houses, whatever.

You don't need a deposit, you'll save on income tax and your investment can pay for itself without any out of pocket costs at all.

We will help every step of the way.

With careful property selection through exclusive computer analysis you'll see exactly how much property you can afford and what your obligations will be.

You'll get a fascinating projection of your investment up to 40 years into the future.

You'll know exactly what costs are incurred, estimated cash flow and what profit you're likely to make if you sell in five or ten years.

In fact you'll have all your questions answered before you invest for complete peace of mind.

Guyett Real Estate will provide cost efficient management including tenant selection, rental collection, maintenance, bill paying and regular inspection to maximise your return.

If you think this is all too good to be true call Guyett Real Estate on 512847 and start on the path to financial independence.



**11 Clifton Springs Road
Drysdale**

Phone: 51 2847