

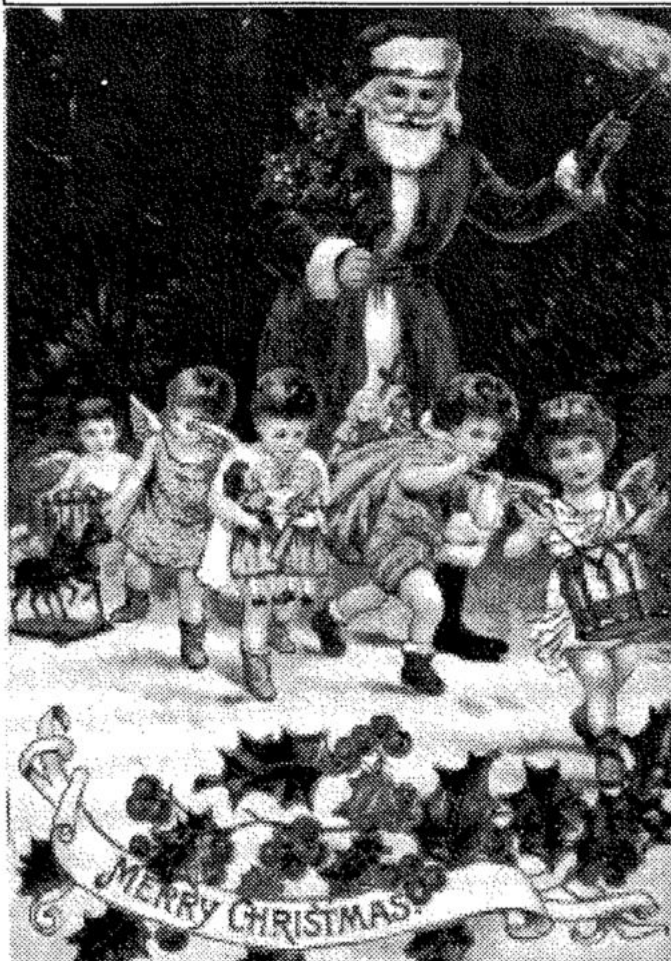
# The SpringDale Messenger

Your Free  
Community  
Newspaper

Compiled and published by the SpringDale Community Cottage Inc

Circulation 4,000

Vol 5 No.9, December 1995



*The Springdale  
Messenger wishes  
you all the joys of  
Christmas and  
happiness  
throughout the  
New Year*



THRIFTY-LINK  
HARDWARE

YOUR HANDY  
HARDWARE  
STORE

**DRYSDALE  
VILLAGE  
HARDWARE**

**(052) 51 3267**

THE ARCADE  
HIGH STREET  
DRYSDALE, 3222.



20 NEW COIN & CARD OPERATED

**POKER MACHINES**

AVAILABLE IN OUR  
REFURBISHED GAMING ROOM.  
SOCIAL MEMBERSHIP AVAILABLE

# The SpringDale Messenger

The SpringDale Messenger is compiled by the SpringDale Community Cottage, 14 Princess St. Drysdale.  
Postal: P.O. Box 80, Drysdale, 3222.

## Advertising and Enquiries: 53 1960.

Community Groups, Churches, Sporting Clubs, Service Clubs, etc., are invited to submit details of their future activities for regular inclusion in the Community Diary section, or as articles in the news section as appropriate.

Copy may be typed or printed with a good ribbon (preferred), or legibly handwritten and left at the SpringDale office at 14 Princess St., in the box at Elliott's Newsagency, or posted to  
P.O. Box 80, Drysdale, 3222.

## Next Publication:

Copy deadline: 15th January, 1996.  
Distribution: 2nd February, 1996.

Views expressed in this newsletter are not necessarily the views of the Publisher, the SpringDale Community Cottage.

## ADVERTISING AND ARTICLES:

Maureen Naughton,  
SpringDale Community Cottage, Phone (052) 53 1960.

To ensure publication in a specific issue, copy must be submitted prior to deadline.  
Layout and Design of this issue by  
Pagination Design Services, Geelong.  
Ph: (052) 23 2494



## BELLARINE FOOT CLINIC

**Paul B. Shannon,  
Lyndal McGuire  
PODIATRIST'S  
100 The Terrace  
Ocean Grove, 3226.  
39 Fenwick St.  
Portarlington, 3223  
64 Bellarine Highway  
Newcomb 3219  
Ph: 22 4147**

# Contents

IT'S CHRISTMAS TIME AGAIN !! ..3	
1945 - 1995	
AUSTRALIA REMEMBERS .....	4
THE FINAL WORD - THANKYOU!! ..4	
The Make A Wish Foundation. ....	5
NEW BUSINESS IN DRYSDALE: ....	6
GOOD NEWS! .....	7
THE CREEK NATURE RESERVE AT CLIFTON SPRINGS PRIMARY SCHOOL .....	8
CHILDREN'S CHRISTMAS STORY .....	10
SALLY MEETS SANTA .....	10
THE POKIES .....	11
DRYSDALE PHYSIOTHERAPY AND SPORTS INJURY CLINIC .....	12
THANK -YOU .....	12
DRYSDALE FIRE BRIGADE .....	13
OPPORTUNITIES .....	14
YOUR HELP IS NEEDED .....	14
BELLARINE COMBINED EMERGENCY SERVICES GROUP. ....	16
POLICE MESSAGE - XMAS 1995. ..	18
Seasons greetings to all residents of Coryule Ward .....	19
IN YOUR GARDEN .....	20
"THE CHRISTMAS PROGRAMME 1995 - BELLARINE PARISH - .....	28
Community notices.....	30
DRYSDALE C.W.A. ....	33
SPRINGDALE CLASSES .....	34
BUYING AND SELLING IN TODAYS MARKET .....	36



## IT'S CHRISTMAS TIME AGAIN !!

Christmas! Christ's Mass! To mass is to assemble or to bring together. It's come to mean a feast day; Christ's feast day. The day His followers assemble to celebrate His birth; and so too, do countless others who have no real knowledge of the background story, but who appreciate and enjoy the wonder and the magic of it all.

Many scholars and prophets had foretold of His coming, and at His birth some brought gifts and some tried to kill Him. Nothing much changes!.

Christians believe that Jesus was God's gift to the world, a leader, a teacher and an example to the world of what God wants his Kingdom to be, so we celebrate His birth by giving gifts to one another.

Material gifts are all very well in their way, as a token perhaps, of something far more valuable than anything else Love.

The message of Jesus is that, after we duly worship our Creator, we are to love one another whole heartedly. Love is that indefinable something, that purest of emotions and is the greatest gift that we mortals can give.

Christmas morning is a starting point, a time when we too, can start again with Faith and Love.

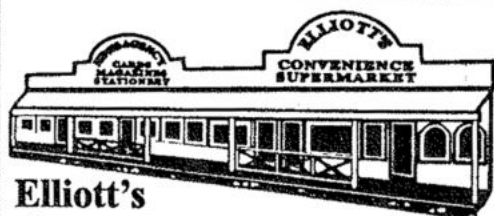
When the presents are enjoyed, the Christmas candles have burned out, the carols have

ceased, the stars are set and the night has passed, the love of God remains.

Although at the birth of Jesus, the "Wise Men" brought valuable gifts of gold and frankincense and myrrh, it was the baby who bought the greatest Gift of all.

To all of you and all of your families, go my best wishes for a happy Christmas.

John Brumley.



**Elliott's  
Convenience  
Supermarket & Newsagency**

**12 High St. Drysdale  
Ph 512401/512776**

**NEO LIFE**

Australia's Health Company

**Natural/Organic  
Nutritional  
Supplements**

- ☒ Food Source Vitamins
- ☒ Organic Minerals
- ☒ Sports Programs for Athletes
- ☒ Weight Control Programs
- ☒ Water Filters & Air Filters
- ☒ Natural Vit E Skin Care Programs
- ☒ 100% Money Back Guarantee

Ring for free brochure on all our products.

**Gary & Dawn Caldwell - Ph: 532049**

# **1945 - 1995 AUSTRALIA REMEMBERS**

## **THE FINAL WORD - THANKYOU!!!**

16 August 1995

Dear Grandpa,

This is a note to say thank you for the sacrifices you made during the Second World War.

I just wanted to let you know that your own grandchildren have not and will not forget the price and sacrifice many Australians like yourself have paid for the freedom we enjoy today. Whilst the youth of to-day will never truly understand the full extent of the suffering you experienced during the war, it is through such events as ANZAC Day and V.J. Day, that some of the realities of war are brought home in the minds of our youth. I hope that the ultimate sacrifice your generation made will forever stand as a reminder against future conflict, so that no Australians will ever have to endure and suffer first hand the effects of war.

This letter was shared with us in late August this year by a Returned Service man who fought both in the Middle East and the Pacific 1940 - 1945.

We felt it summed up exactly what this year of Commemoration has been all about.

Thank you for the Freedom



Forever in your debt

B\_\_\_\_\_.



### **CONCEPT CAMPERS**

Manufacturers and repairers  
of Annexes, Awnings, Tonneaus,  
Tarps, Horse Rugs, Boat Covers  
Custom Built Camper Trailers  
Caravan and Boat Storage  
Discount for senior citizens

Phone (052) 532569  
61-63 Murrodoc Rd.  
Drysdale.

### **Classy CHASSIS**

#### **LINGERIE**

*Underwear for the whole family*

- ✦ BRA SIZES - 10AA - 24E
- ✦ NIGHTWEAR FROM \$23.00
- ✦ PERSONAL FITTINGS
- ✦ MENS - SOCK-JOCKS-WRAPS

Shop Locally and Save ...  
Call in - Browse and check out my prices  
HAPPY CHRISTMAS TO YOU ALL

SHOP 6, 26 HIGH STREET, DRYSDALE.  
PHONE - FAX 052 - 53 2230

### **Wirruna Nursery & Display Garden**

Open 8.30 - 5.30 every day

Rare plants, perennials & roses  
Native & coastal shrubs  
Indoor, courtyard & bonzai plants  
Garden furniture  
Terracotta, pottery & statues  
Fountains, pumps & sundials

660 Wallington Rd.  
Wallington, Vic. 3221.  
Ph. 50 1971



## The Make A Wish Foundation.

The Make A Wish Foundation of Australia was established to fulfill the special wishes of children under the age of eighteen years old suffering from life threatening illnesses. Make A Wish Foundation was formed in 1985, and has forty branches in Australia, including a chapter in Geelong.

A Wish child is asked one simple question. "If you could wish for anything in the world you have always wanted, or do anything you have dreamt of, what would it be?" Answers range from being a policeman for a day, owning a computer, a trip to Disneyland and meeting a favourite sporting hero.

Recently the Foundation granted its 1000th wish in Australia. Mrs. Linda Pauling, the original founder of Make A Wish in America, visited Australia to help celebrate the occasion, which was held in Perth.

Funds for the Make A Wish Foundation come from large corporations, small businesses, celebrities, community organisations and members of the public, and depend greatly on the support of volunteers.

The co-ordinator for the Geelong chapter of the Make A Wish Foundation is Mr. Kevin Costa. The Make A Wish Foundation can be contacted on 1800 032260.

- \* Are you between the age of 15-20?
- \* Unemployed?
- \* Registered with the CES?

Why not join us for a **FREE** absailing day?

Transport to and from Drysdale/Queenscliff area.

Contact Rob or Louis on 23 1988  
for more information.

BAYSA YOUTHLYNX is a training program for young unemployed people funded by the Department of Employment, Education and Training.



**RISTEVSKI HORAN**  
BARRISTERS & SOLICITORS

Cm. High St. & Springs Rd.  
**Drysdale**

P.O. Box 99  
**Drysdale 3222**

**Fax: (052) 53 1815**  
**Phone (052) 51 3453**

**CITY  
of  
GREATER  
GEELONG**

Bellarine District  
Supports the  
SpringDale Messenger  
in the interests of better  
community communications

**BELLARINE  
AUTO  
SERVICES**

Quality Mechanical Repairs  
Tuning - Servicing  
LPG Conversion - EFI  
Tyres - Batteries - RWC  
Licensed Vehicle Testers

Mortimer St. Drysdale  
Proprietors:  
P. Bruce J. Pamplin  
**Ph. 53 1644**

## **NEW BUSINESS IN DRYSDALE:**

Introducing Helping Hand Disability Aids and their new showroom/service centre in Village Walk, Drysdale.

The opening fulfill a need for a service centre and display of available mobility aids such as walking frames, electric scooters, com-mode chairs, handrails etc.

Wheelchairs and scooters are serviced and repaired on the premises with free home trials and demonstrations to various clubs also offered.

We also modify homes to improve your mobility with engineered grabrails, chair-raisers, ramps etc.

Electric scooters are available for hire on a monthly basis from \$35.00 per week.

Helping Hand Disability Aids is a husband and wife partnership between Jim and Marita Lilley of Drysdale. Jim's experience extends over 30 years in the building trade and more recently in local Government, where he established and managed a home main-

tenance service which provided support for aged and disabled clients.

Marita and Jim will be happy to discuss your individual problems and requirements to suit your needs and improve your mobility and lifestyle.

So remember to call us when you need a helping hand.

Phone B/H 532159 A/H 532616 FAX 531022



## **HELPING HAND DISABILITY AIDS**

If walking is difficult . . .  
restore your independence and start  
enjoying your life again with a 3 or  
4 wheeled  
Australian made  
**GOPHER**  
scooter.



**For:** **Wheelchairs**  
**Electric Wheelchairs and Scooters**  
**Walking Frames**  
**Easy Walkers**  
**Canterbury Concept Grabrails**  
**Home Modifications**  
**Engineered rail systems.**

Restore your independence and start enjoying  
your life again with quality mobility aids from  
Jim and Marita Lilly.

Remember \$200 discount on new  
and used scooters until Christmas.

**We service all brands of wheelchairs and scooters -**  
**"Call us when you need a helping hand"**  
**Shop 5 Village Walk Ph. 532159 Fax 531022.**

## **GOOD NEWS!**

from Clifton Springs Baptist Church ... where you can meet new friends and experience friendship with God.

I think the Myers window in Geelong symbolizes that which is so often missing from our Christmas celebrations these days. The window only has a picture of a star and the meaningless words: "they looked up and saw a star". This reminds me of a woman who was busy going about her Christmas shopping. She was overheard to mutter indignantly: "why, they're even bringing religion into Christmas these days!".

The truth is that the person of Jesus Christ is the reason for the season. The main purpose of Christmas is to remember, with a sense of awe, that 2000 years ago God came to earth as a baby. God was born into a world of suffering and evil to give us help for the present and hope for the future. During his life-time, he performed many miracles and healings to establish his claim to be God. And then he died on a cross to prove his great love for us and to invite us to experience His friendship.

With all the hustle and bustle of Christmas, with all the excitement and joy, with all the parties and gifts, may we remember that the only reason for the season is Jesus Christ.



*The Springdale Messenger*

You are most welcome to join us in our Christmas celebrations this year. There is a Concert/Carols Service in the Church grounds on Sunday 17th December, starting with a b.y.o. picnic tea at 5.30pm followed by the Concert and Carols from 6.30pm - 8.30pm. Then on Christmas Day itself, there will be a service at the Church from 9.00am - 10.00am. Our address is 45 Central Road, Clifton Springs. For any queries, please phone 531833 or 512973.

Christmas food parcels can also be delivered to those in need.

Happy Christmas everyone!

Warmly,

David Sharrock  
Pastor.



### **BELLARINE**

VETERINARY PRACTICE  
7 PALMERSTON ST. DRYSDALE

Mon, Wed & Fri 10.00am - 11.30am  
2.00pm - 3.00pm  
Tues & Thurs 10.00am - 11.30am  
5.30pm - 6.30pm  
Saturday 8.30am - 10am

Office only (No Vet)

Mon, Wed & Fri 11.30 am - 12.30 pm

Please Phone: 53 1393

Calls outside these hours will be  
diverted to our Newcomb Hospital

Page 7

# THE CREEK NATURE RESERVE AT CLIFTON SPRINGS PRIMARY SCHOOL

Last term, the year 6's at Clifton Springs Primary School participated in a project that has seen the development of a walking track and outdoor classroom, and the planting of over 700 indigenous plants in the creek reserve that adjoins the school along its western boundary. This work was the culmination of efforts that began in 1993 to reclaim the creek area.

Early in 1993, two year 3 classes in the rooms closest to the creek, wrote to the then City of Greater Geelong, Bellarine District, to ask for their support in clearing the boxthorn and broom from the area between the banks of the creek and the school fence. (It was so thickly overgrown that any ball that went over the fence was given up as lost!)

In May that year, Rob Giddings visited the school on behalf of the City to assess the worth of the project. He agreed with the potential of the project and we were away!! Machines arrived the next week and children eagerly monitored their progress from our classroom windows and at the same time drew up designs for the future of the project. (Some were very imaginative!)

The idea that emerged was for a walking track surrounded by indigenous plants, a weir and ponding platform, a stairway down to the creek and an outdoor classroom.

When the machines had finished, the children spent hours, much of it in their lunchtimes, cleaning the area of smaller plants and leveling the soil. The children then marked out a walking track and planted dozens of trees. Throughout the year the children tended the trees and pulled out any noxious weeds that were accessible. At the same time we drew up a submission of our plans for the council to consider and sent a photographic essay of what we had done to the 1993 Earthworm Environmental Awards.

There was great excitement when we found out we had won the award for Primary Schools. Two children went up to the Herbarium at the Botanic Gardens in Melbourne to accept it. Included was a cheque for \$300.00 which we used to purchase Gould League materials to support lessons taken in the creek area. Many teachers were now using the area for a variety of activities.

During 1994 we continued to maintain the area and to plant more trees, but the project halted due to lack of funds. We applied for several grants in partnership with the City of Greater Geelong, but missed out.

At the beginning of this year we received some welcome news. A \$2,000.00 grant from Coast Action! We then applied to Greening Australia for a team of workers and were again



**BELLARINE PHOTOGRAPHICS**

- \* 1 HOUR PHOTOS
- \* FRAMES & ALBUMS
- \* LAMINATING
- \* CAMERAS
- \* BLOCK MOUNTING

Now In Drysdale Village Shopping Centre  
TUCKERBAG  
TATTS

Phone 51 3300

 **Kodak EXPRESS**  
QUALITY MONITORING SERVICE

WE USE

Why trust your memories to anyone less.





**Craig Home & Garden**

*Ash* **Maintenance**

**Gardening Carpentry Joinery Painting**

**Ph. 53 1010 Mobile 015 342 719**



successful! Under the leadership of Bruce Humphries from the City of Greater Geelong, the project was completed over a period of weeks with the involvement of the children in all facets of the development.

We all learnt a lot about landcare and the huge amount of work required in clearing land of noxious weeds. The school now has an ideal venue for environmental education and the local community a place for passive recreation. We encourage all residents to take a walk along the back of the school to see what has been done, and ask that children using the area help us to take care of it.

Rob Riley  
Environment Co-ordinator  
Clifton Springs Primary School

\*\*\*\*\*

Grade 6's this year are all helping to clean up the creek. It was hard work because we had to pull out Boxthorn, plant new trees and pull out weeds, but it was fun. The people from Greening Australia and Greater City of Geelong built a weir out of stone, put steps leading down to the creek, put seats down for a classroom and a pathway. We are going down to use the creek to catch things and study them. Mr. Riley was the one who helped us clean it

up. We have got to keep vandals away from the creek so we can keep it in good condition and natural. I think later on it will be used more by the other grades, but it will be good.

Kyle Garra Gr.6 C.S.P.S.

This year the grade six children of Clifton Springs Primary School started cleaning up the creek. Once it was big red gum trees now it is boxthorn, hawthorn and gorse but the grade sixers are trying to get it back to the way it was with the help of Greening Australia. We started cleaning up the creek at the end of Term 2. Over the second term holidays City of Greater Geelong cleared off some of the boxthorn and built stairs down to the creek. During Term 3 Greening Australia built a platform out of mud and logs and a weir out of stones so we will always have water in front of the platform. I think that it is an advantage for the school because it is a good spot to take a walk and when the smaller grades learn about the environment they can just go down there. In the future I hope to see a track go down to the beach and the rest of the creek cleared out. I think it was well worth it.

Ryan Hutchinson Gr. 6 C.S.P.S.



**HENDRY**  
CYCLES

Now at two great locations:  
Ocean Grove and Drysdale.  
Time to upgrade your bike?  
Come in and select from our  
wide range of mountain  
hybrid and racing cycles.  
Parts and accessories  
for all makes.

Bellarine Peninsula  
Cycle Specialists

- Drysdale  
High Street  
53 2662
- Ocean Grove  
Park Lane  
551627

*The Springdale Messenger*

**DRYSDALE NATUROPATHIC CENTRE**  
**MRS. LISA TAYLOR N.D.**  
Naturopathy, Homeopathy, Remedial Therapy and Massage

SUITE 4, 11 CLIFTON SPRINGS ROAD, DRYSDALE  
Phone: (052) 53 2510 A/H. (052) 512544  
**CARMOORA CLINIC**  
343 Moorabool St. Geelong. Phone: (052) 23 2616

Page 9

## CHILDREN'S CHRISTMAS STORY

### SALLY MEETS SANTA

One morning, while Sally was still in bed, something exciting happened! Mother told Sally she was taking her to the city to visit Santa. "Hurry Sally", said mother. "We don't want to miss the train". Sally jumped out of bed and quickly ate her breakfast, before putting on her best summer frock.

They arrived at the station just in time. Sally found a seat by the window.

Near the city the train slowed down. When it stopped at the big station everybody got out. Sally held mother's hand tightly while they walked through the gaily decorated city. Windows were bright with little Christmas trees, snowmen and tiny twinkling lights. They came to a large department store where mother wanted to do her Christmas shopping.

Sally was very patient while mother chose a shirt for Daddy, perfume for Aunt Isobel, writing paper for Grandma, slippers for Grandpa, and a book for Cousin Joe.

At last it was time to visit the toy department. Sally was looking forward to spending her birthday money. She and her mother rode on the escalator to the next floor. "That was fun", Sally said, when she reached the top. She looked around. Never before had she seen so many exciting things all at once.

She ran ahead to pick up a beautiful baby doll. When she turned to show it to her mother, Sally couldn't find her anywhere. She put the doll away and began to search up and down the rows. She felt a little frightened. But she didn't cry.

Sally found a staircase and climbed to the top. There she was surprised to find a castle, surrounded by a pretty garden. In the castle was someone she'd been longing to meet. It was Santa!

Sally stood there, all alone. Santa beckoned her to come closer. "Hello", he said, "What's your name?"

She felt a little shy, but she told Santa her name was Sally Ann Jones.

"And where's your mother, Sally?"

"I don't know". A teardrop fell on her cheek.

Santa smiled. "Don't worry, we'll soon find her".

He called to one of his fairy helpers. He explained that Sally had lost her mother. Very soon she heard a voice over the loudspeaker asking for the mother of Sally Ann Jones to come to Santa's castle. Santa gave her a bag of jelly beans while they waited.

**FREE INITIAL CONSULTATION**

- ▼ ACCOUNTING & TAXATION SERVICES
- ▼ SMALL BUSINESS CONSULTANTS

**FTA**  
FRANK TIGANI & ASSOCIATES PTY LTD

**53 2992**

**15 HANCOCK ST, DRYSDALE**

**"Le Shah Boutique"**  
Ladies Clothing and Accessories



Shop now for Christmas

Win a \$50 Voucher

- Lay-by's Welcome
- Larger sizes Available (Sizes 8 to 24)

15 Hancock St., Drysdale. Ph: 53 2511

How happy she was to see her mother again. Mother gave her a big hug and thanked Santa for helping Sally.

"Sally", said Santa, "you haven't told me what you would like for Christmas". Sally told him she would like a baby doll, best of all.

"I think that's a splendid idea", he replied.

Mother and Sally said goodbye to Santa and went down the stairs.

Sally still had her money to spend. She chose a white china tea-set, decorated with tiny pink roses. She carried it carefully out of the store and along the busy street.

On the way home Sally thought of all the strange and exciting things she'd seen in the city. That night, when she saw her Daddy, she told him all about her wonderful day and the story of how she came to meet Santa.

BY SYLVIA SPRUIT

## THE POKIES

I am off to the Pokies  
to have some fun.  
Maybe I'll strike it lucky  
before I am done.

All around me bells are ringing,  
Lights are flashing, birds are singing.

Another wine, but who's counting.  
My excitement sure is mounting.

Monkeys laughing, dogs winking,  
I think this wine has affected my thinking.

Now those stupid dogs are growling,  
And I just feel like howling.  
My moneys all gone, my finger is sore,  
I am going home if I can just find the door.

Lorraine Barrett





### SMART CARE

**LAWN MOWING SERVICE**  
**COMPETITIVE RATES**  
**QUALITY RELIABLE SERVICE**  
Why do it yourself? - Call now  
**51 3992**

*The SpringDale Messenger*

## CMI

## SUZUKI

### OUTBOARDS

Authorised Dealer

- SERVICE AND REPAIRS TO ALL MAKES OF OUTBOARDS
- SPARE PARTS
- BOATING ACCESSORIES
- TRAILER, REPAIRS AND PARTS
- USED MOTORS
- PROPELLER REPAIRS
- SLIPWAY AND FULL SHIPWRIGHT FACILITIES
- BOAT SALES AND REPAIRS
- FITTING OUT AND MODIFICATIONS

Customer Satisfaction Guaranteed

**CMI**  
RIPPLESIDE  
PTY LTD

**PH: 722672**  
LIVERPOOL STREET,  
NORTH GEELONG



Page 11

## **DRYSDALE PHYSIOTHERAPY AND** **SPORTS INJURY CLINIC**

The Drysdale Physiotherapy And Sports Injury Clinic held an Open Day at its new premises (27-29 High Street) on Sunday 29th October. The public was invited to view the new facilities and physiotherapists were available to answer questions.

The clinic's principal, Jenny Turner also gave an informative talk covering sports injury (prevention and management) neck and back pain. She highlighted the importance of RICE (rest, ice, compression and elevation) in the control of inflammation following an acute sports injury. Inflammation compromises the speed and quality of healing and must be minimised. Therefore, the HARM factors (heat, alcohol, running/resistance and massage), which increase inflammation, must be avoided.

Jenny emphasized the role of poor posture in the development of neck and back pain. Ideal posture places the least stress on spinal structures, including joints, discs, ligaments and muscles. The aim is to maintain the natural curves of the spine with a straight line passing through the ears, shoulders and hips when standing or sitting.

The new clinic with its state of the art equipment and size provides a great asset for our growing community.

The clinic is open from 8am - 8pm, with a car park off Eversly Street. The phone number remains 512 958.

## **THANK -YOU**

The Drysdale Fire Brigade would like to thank the Businesses and Community of Drysdale, for their items and donations for our Garage Sale, also, the luscious cakes for our cake stall.

The items that weren't sold in the sale were donated to the Salvation Army.

The Raffle winners were - Meat Tray -  
Lynn King  
- Fruit Basket  
- Harold Toyne  
- Toy - Bub  
Noy





**NURSERY  
& GALLERIES**

**OPEN 7 DAYS  
8-30am to 5pm.**

Indigenous plants of the Bellarine Peninsula,  
natives and cottage plants.

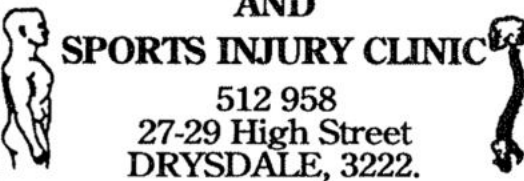
Garden and bus tours are by appointment.  
Tea rooms and art galleries open weekends only  
or by appointment.

Located on the corner of Soho and  
Murradoc Roads, Drysdale.

**Fax and Phone: (052) 531 355.**  
**Mobile: 015 342 811.**

**DRYSDALE PHYSIOTHERAPY  
AND  
SPORTS INJURY CLINIC**

**512 958**  
**27-29 High Street**  
**DRYSDALE, 3222.**





## **DRYSDALE FIRE BRIGADE** **BRINGS SANTA**

**TO DRYSDALE/CLIFTON  
SPRINGS**

**CHRISTMAS EVE FROM 6.30PM**

TIME DOES NOT PERMIT SANTA TO GO DOWN EVERY STREET, DRIVE AND COURT. LISTED BELOW ARE THE STREETS THAT YOU CAN SEE SANTA ON THE FIRE TRUCK.

**CLIFTON SPRINGS:**

SPRINGS ROAD, WHITCOMBES ROAD, CARAWATHA AVENUE, WAULA AVENUE, DUNDUNDRA AVENUE, THAMBALLINA AVENUE, GUMAROOKA AVENUE, DANDARRIGA AVENUE, BEACON POINT ROAD, COOLANGATTA DRIVE, COUNTRY CLUB DRIVE, BAYSHORE DRIVE, BUNGANOWEE DRIVE, LEAWARRA WAY, PARAKOOLA DRIVE, BOONDERABBI DRIVE, CENTRAL

ROAD, YARRAMUNDI DRIVE, MIRRABOOKA DRIVE, HILL STREET, JETTY ROAD, KEWARRA DRIVE, BARONGAROOK DRIVE.

**DRYSDALE:**

PRINCESS STREET, BUCCLEUGH STREET, DEBURGH ROAD, HIGH STREET, GRANVILLE STREET, WYNDHAM STREET, BARRANDS LANE, KIMBERLEY AVENUE, CAROLANNE DRIVE.

THE DRYSDALE FIRE BRIGADE WISHES THE RESIDENTS OF DRYSDALE/CLIFTON SPRINGS A VERY SAFE AND HAPPY CHRISTMAS AND A PROSPEROUS NEW YEAR.



### **Shiloh Easy Spin Wool**

- Natural coloured wool "tops" -scoured & carded ready to spin.
- Raw fleeces (Nov.-Mar.)
- Lambswool

**Jenni Trudgeon**  
40 Scotchman's Rd, Bellarine  
Ph: 512497

### **PHARMACY OPEN SUNDAY 9am-noon**

Weekdays 9am-6pm  
Sat 9am-1pm

**David C. Pinney**  
Shop 5/3 Wyndham St.  
Drysdale

**Ph. 513298**



**6 WEEKLYS  
FOR \$10**

**1 Overnight and  
4 Weeklys for \$10**

30 High Street, Drysdale  
**Phone: 512486**

## **OPPORTUNITIES**

Drysdale is becoming the opportunity shop centre of the Peninsula. With four shops, there is plenty of choice for everyone. With the ever-increasing number of families needing help, support for all of them is growing more important.

The newest of these is the "Village OP" opened by Concern, the Uniting Church Welfare Agency which serves Geelong and surrounding areas so well. Concern provides material and emotional support and/or financial assistance to meet immediate needs. Basic advice, referrals to specialist community services, ongoing support to clients and low

cost accommodation (primarily for cancer sufferers and their families from outlying areas) is also available as well as low cost goods from its three op. shops.

Many voluntary workers and a high standard of starting stock has sales off to a good start after the opening by Gary Spry M.L.A. Already a promising flow of donated clothing has developed.

Browsers and buyers alike are welcome at the Village Op (behind Drysdale Post Office) and donations will be gladly received.

## **YOUR HELP IS NEEDED** **ASSISTANCE for RED CROSS** **CALLING - MARCH 1996**

The annual door knock by Red Cross in March of each year is the primary Fund raising event by Red Cross.


Australian Red Cross (Victoria) is part of the world wide Red Cross and is one of the leading Volunteer organisations in the world

providing emergency assistance to people affected by emergencies and disasters.

In the Geelong Barwon region there are 30 Red Cross units involved in Fund Raising and supporting many services that assist the most needy in our community.


*Uniting Church in Australia*  
CONCERN

# VILLAGE OP SHOP



Village walk Drysdale  
Open Monday to Friday  
10am 4pm

Donations of goods may be made  
at the shop



**Hepner**  
Funeral Services

*We Care*

Ph. 561626 all hours  
For information or advice about  
funeral planning. Ocean Grove  
office open every Saturday  
9.00 - 1.00 pm  
Neighbourhood Centre, 77 The Parade

An example of the main services that are delivered by local volunteers are as follows;

Disaster relief      - Emergency Catering  
                             - Registration of people who have been evacuated from their homes.  
                             - First Aid  
                             - Assistance to families who have lost possessions  
                             single incidents such as house fires.

Community service      - A transport service to Urgent Medical Appointments for those who have no other means of getting there.  
                                 Loans of Medical Equipment such as wheel chairs and crutches for people needing support after injury and illness.  
                                 - Community visitors scheme.

Community Education      - First Aid training for the public, schools and industry.

Many other local activities are supported by Red Cross volunteers such as assistance at the Blood Bank and the management and staffing of the Gift Shop at the Red Cross Centre in Bellarine Street.

To be able to keep up this vital work Red Cross needs a great deal of assistance with Red Cross Calling. This assistance is required in the way of "area organisers" and local people to assist in the door to door collection. If people in the community can give just a couple of hours for the collection they will be playing a vital role raising the essential funds for Red Cross.

It is important to note that ALL monies collected during RED CROSS CALLING stay within Victoria.

If you are able to help you can contact;  
Vi Malcolm 513195

.....  
PLEASE HELP US.....

**NEW**

**NEW**

**NEW**

## **ELEGANT PROFILE BEAUTY SALON 531744**

We have moved into the  
Drysdale Village Shopping Complex  
(next to Kodak)

### **GRAND OPENING SPECIALS**

**MANICURES - \$8**

**LASH TINT - \$6**

**MANY OTHER GREAT OPENING BARGAINS.**

*Come in and browse through all our natural products and gifts.  
We cater for all your beauty needs. Come on in and be pampered now by*

**CAROL, SUE, MILLIE**

## **BELLARINE COMBINED EMERGENCY SERVICES GROUP.**

### **COMBINED EMERGENCY SERVICES EXERCISE.**

**CONDUCTED ON SATURDAY, 25TH NOVEMBER 1995.**

Under the authority of a Victorian State Act of Parliament being the EMERGENCY MANAGEMENT ACT of 1986, Emergency Services are obliged to conduct routine exercises according to DISPLAN, the State Emergency Response Plan. A major exercise had not been conducted on the Bellarine Peninsula for many years so a decision was made to conduct one using the new combined S.E.S. and Ambulance Station in Grubb Road as the focus.

In practice, Emergency Management means the Organisation and Management of Resources for dealing with all aspects of Emergencies. This can range from the almost routine attendance of Police, Fire and Ambulance Services at a bad motor car accident, through to activation of Statewide Resources to combat serious emergencies such as large bushfires or major flooding.

Accordingly, an exercise was planned for the evening of Saturday the 25th of November, 1995, during State Emergency Service Week. This time and date was selected to accommodate a majority of participants who are volunteers.

The scenario unfolded at the Bridge Street Railway Crossing in Drysdale. A petrol tanker crashed into the side of a train with the injured driver wandering off into the Pony Club area leaving two hitchhikers lying injured on the truck floor. The train contained parties from Drysdale Cubs, Venturers and Elderly Citizens Club with the Bellarine Jongleurs being very effective in many acting roles. Two injured from the train also wandered off into the Pony Club area.

A farmer's vehicle containing four persons then crashed into the rear of the petrol tanker and various chemical drums split and mixed into the cabin and boot.

While services were coping with this emergency, two cars racing along Reserve Road came across the train stalled on the line. One crashed into the rail petrol tanker breaking valves causing petrol to spurt onto the road petrol tanker. The other upon braking, rolled over on the side of the gravel road nearby and caught fire.

**BELLARINE CHRISTIAN BOOKS  
and RESOURCES**

SHOP 4, VILLAGE WALK,  
21 CLIFTON SPRINGS ROAD  
DRYSDALE, VIC. 3222

HELEN & BILL BREW  
PH: (052) 513 491  
FAX: (052) 513 495

 **DRYSDALE TIMBER—**  
**Ultimate Hardware**  
Timber Specialist  
Cut to size  
Full range of Hardware  
Paint and Garden Supplies

**PH. 512852**  
**OPEN 7 DAYS**  
**LOT 1 MURRUDOC RD.**  
**DRYSDALE.**



Towards the end the scene became very busy with almost 200 participants including train passengers and over twenty emergency service vehicles were present. There were Ambulance and St Johns personnel treating injuries and supervising the evacuation of people from the train by spare CFA and SES members, while other SES members were cutting other victims from cars, also under Ambulance Supervision

They had to contend with poisons from the farmers chemicals and leaking petrol from the train. Other hazards were poison chemical fumes, smoke from the burning car, foam and water from CFA hoses while other SES rescue equipment hoses were underfoot ready to trip the unwary.

While all this was happening a rescue train was dispatched from Queenscliff to service the train disabled in the collision. Effectively there was a Public Transport Corporation (PTC) exercise within the Displan exercise. It was a very busy day indeed.

Spare resources had to be considered and ordered where necessary considering real time, travel constraints. A highlight was the calling and arrival of the Police Air Ambulance which only took 14 minutes from ground Essendon to ground Drysdale for evacuation of a time critical patient.

The exercise was designed to confront the participants with a complex combination of rescues beyond the personnel and equipment resources. They were forced to prioritise

equally critical and potentially tragic incidents. The participants included:-

Drysdale Police  
 Bellarine and Geelong S.E.S.  
 Bellarine and Geelong Ambulance  
 Police Air Wing/Air Ambulance  
 All Bellarine C.F.A. units  
 Geelong C.F.A. HAZMAT unit  
 Red Cross - Evacuation Registration  
 Salvation Army - Pastoral/Workers care  
 St. John Ambulance  
 Bellarine Peninsula Tourist Railway  
 Drysdale Elderly Citizens Club  
 Bellarine Jongleurs  
 Drysdale Venturers  
 Drysdale Cubs

The training exercise Objective was for the planners to provide a complex Major Emergency Incident training exercise as an opportunity to educate Bellarine based Emergency Services units, test skills, evaluate preparedness, create awareness of capability and promote camaraderie between Services.

Residents of the Bellarine Peninsula can rest assured they are served very well by all emergency services, especially the volunteer services who are staffed by competent, well trained ladies and gentlemen with thoroughly professional attitudes. The volunteers are special people.

On behalf of Bellarine Police, Fire, Ambulance and State Emergency Service.  
 (SERGEANT GREEN)  
 DRYSDALE POLICE.

### Why do it at night

when we can do  
 it from as little as **\$2.15**  
 per day



It's cheaper than doing it yourself

Contact Cliff Stride  
 Mobile 018 526 187  
 After Hrs 53 1829

### ROTARY HOEING & GRASS SLASHING

Large &  
 small areas

IF YOU NEED:

A VEGI PATCH  
 NOXIOUS WEED SPRAYING  
 A NEW LAWN  
 GRADING  
 SCARIFYING  
 HARROWING  
 PLOUGHING

Contact  
 Frank &  
 Tegwen Vella

53 1515 or 018 593 992



### Builder & Carpenter

Michael Kragh

Renovations  
 Extensions  
 New Homes



018 108986 or 51 3477

## **POLICE MESSAGE - CHRISTMAS 1995.**

It is unfortunate that many people consider the Christmas period as the Silly Season. There is no doubt while most people relax into a holiday mood that Police find themselves busier than ever. Road Safety is of paramount importance as families visit friends and relatives over this time. The Drink Drive - Bloody Idiot and T.A.C. Road Safety Campaign images are something that we should not let slip. The next time you see the television ads stop, to properly look at them and reflect on the message.

Local problems are speeding on through roads, and the arterial roads of Drysdale/Clifton Springs. Please remember to lookout for children. They are all on holidays and in a relaxed mood with many riding new bikes for the first time, with others daring to venture onto residential streets with new skateboards, roller blades and the like.

Please remember that inattention is an extreme hazard in driving and that the most important component in a car is the nut behind the wheel.

For the parents of teenagers, please try and give some thought to their whereabouts and leisure time activities. The recent T.V. images

of the "schoolies" problem in Queensland is not new to Police. It happens everywhere to some degree.

Residents leaving on holidays, please remember to do all those Neighbourhood Watch things like cancelling the paper and having a neighbour mow the lawns. Please fill in an "absence from residence" form here at the Police Station and if you need advice, please ask.

Regarding vehicle security, please remember to **LOCK, LOOK, LEAVE**. LOCK the car no matter where it is and LOOK into it. Have you taken everything inside the home? placed everything in the boot? or perhaps under a blanket in the hatch/wagon before you LEAVE the car?

Please remember "000" for Police attendance. Further, on behalf of Senior Constables COCKBURN, BRIERLEY, WHITE and BONE, may I wish all residents a safe and happy Christmas period, and a prosperous New Year.

(Denis J Green)  
SERGEANT IN CHARGE



# Kings

FUNERAL SERVICES

25 Myers Street, Geelong  
Phone 22 3688, 21 5760

Serving the families of  
Geelong and the  
Bellarine Peninsula  
with understanding  
and care

## Alinga Nursery

Pty Ltd

Cnr Jetty Rd & Railway Cres

### Drysdale

Large range of outdoor  
Plants, natives, trees,  
shurbs, ground covers,  
ornamental trees.



Kerrie & Neil  
Muhlhan  
OPEN 7 DAYS

Ph 53 1299

The *LifeLine* Shop

Unit 1, 19 Murrodoc Rd.  
Drysdale  
Phone 53 2168

Bargain Clothing  
Furniture, Clothing, Brick-a-Brac  
Gratefully accepted  
Profits from our shops  
help fund Lifeline's 24 hr.  
Telephone Counselling Service.

## Seasons greetings to all residents of Coryule Ward

This is a very special time for family and friends and I hope your home is filled with joyous celebration.

If I were to sum up the feeling at Coryule Ward for 1995 I would say, we have a "positive feeling". Coryule is a community that wants to move ahead, take charge of all opportunities, develop and grow. This Ward is very much part of the 'City by the Bay' and through our keen and dedicated traders, business people and residents, we have tremendous energy to focus on the positive aspects of progress for the region.

I recently spoke at a Point Lillias Rally, putting forward my views on the negative aspects of such a chemical facility being located in the area. Two more rallies have been organised; Sunday 3rd December at Parks Hall, Portarlinton and at Fairy Dell, Clifton Springs on Sunday 10th December at 12 midday to 4 pm, BYO picnic lunch. These rallies have been organised in conjunction with the Geelong Environmental Council Inc. Come along and show your support.

The new Drysdale campus of Christian college has progressed very well over recent months with refurbishment works now nearing completion. The campus will be operating for the commencement of the 1996 school year. We are very fortunate to have a school, the calibre of Christian College, now located in our Ward, and I know that the many resi-

dents who send their children to the College, are doubly pleased having it closer to their homes.

A special mention of the silver jubilee celebrations this year for the Lions Club of Portarlinton and Drysdale. The Lions are a very supportive service club and do a tremendous amount of work for the community. I also want to thank all the RSL Clubs in the Ward for the terrific support they gave to the VP celebrations for the City. It was inspiring to see so many returned soldiers turn out for this very special commemorative day.

Just a couple of short notes: City of Greater Geelong - Drysdale Customer Service Centre will soon be opening its new shop front in Hancock Street and will be sharing the premises with the Drysdale Regional Library. The North Bellarine Hostel for the Aged will next year be known as the Ann Nichol House and it will be operating in early 1996. A special thank you to all who have generously contributed to this outstanding project and would ask you all to consider further donations to assist completion.

Some local residents have asked me about the actual boundaries of Coryule Ward and I thought it may be a good idea to describe it here and point out some of the marvellous attractions this area has to offer.

The Ward takes in a large part of Port Phillip Bay from St Leonards to Indented Head and is



**Aquablast**  
Concrete Cleaning

**CONCRETE CLEANING**

Reduces slip and improves the appearance of

- \* Driveways
- \* Patios
- \* Pathways
- \* Pool Surrounds
- \* B.B.Q. Areas

**Phone 51 3916**

**DISCOUNT  
PHOTOCOPYING  
AND FAX SERVICE**

A4 Size 15C each up to 20 copies, thereafter 10c each.

A3 Size 25C each up to 20 copies, thereafter 20c each.

FAX Service.  
\$1.50 first page, thereafter \$1 per page to anywhere in the world.

**Shop 5 Village Walk Drysdale.  
Phone: 532159**

**Bellarine  
Hearing Services**

Geraldine McClumpha  
B.Sc.Dip.Aud. M.Aud. S.A. (C.C.)

**AUDIOLOGIST**

- \* A.H.S. accredited provider
- \* Quality Hearing Aids
- \* Professional hearing assessment

**157 Myers St. Geelong  
Ph. 29 6407**

**Now at Drysdale  
every Tuesday**

bound by Coatsworth Road, Portarlinton Road, Anderson Road, Bellarine Highway and Bawtree Road. Townships include Indented Head, Portarlinton, Bellarine, Clifton Springs and Drysdale.

Tourist features and destinations are numerous, making the Ward a virtual 'gateway' for visitors to the region. There is the popular coastal area and beaches, magnificent golf courses, many outstanding Bellarine Wineries including Scotchmans Hill, Kilgour and Spray

Farm and the new Hermsley Winery off Portarlinton Road. The unique Bellarine Historical Railway and the Old Mill Homestead, to mention but a few.

As the year draws to a close I want to thank all residents for their support over the past nine months. The City has been through major changes and there are still more ahead of us. Let's all make sure they are all 'positive' ones.

**Cr Dennis Blake**

## **IN YOUR GARDEN**

The first official day of Summer is past, so we are probably looking at having some warmer weather. The Spring has been fairly wet, wild and woolly, but that is what Spring is about. Plenty of moisture and a touch of warmth has meant that everything is growing like mad. Your lawns should not be cut too short unless you enjoy the brown dusty look later in the Summer. It may mean cutting the lawn more often if you keep it a little longer, but it will be more able to cope with the rigours of Summer. As for the growth of the weeds, well you have probably noticed that the garden looks very green, but it may not be the things that you planted that you can see. A bit of time spent weeding early, will limit the spread of weeds through the garden, before they can seed and start the cycle again.

The desirable plants in your garden should be showing good Spring growth. The strong winds that we have had may have loosened some plants hold on Mother Earth. It would be to their advantage to get a reasonable sort of prune to encourage root growth and remove any top heaviness, before they go splat in the next round of windy weather. If staking is re-

quired, try not to tie the plant too tightly as some movement is necessary to stimulate root development.

Staking is a short term proposition, plants that have stakes for too long are the ones that are most likely to go west, or east, in the next decent blow. Things like standards and weepers however do require permanent stakes. These should be checked every now and then to ensure that they are still doing the job required. Wooden stakes do not last forever and will rot and break off, usually when you need them to be there. The ties used to hold plants to stakes need to be moved periodically to ensure that you DO NOT ringbark the plant. A beautiful weeping rose in full flower does not look quite the same if its head falls off. You then have a stick!

Wishing you all a very Merry Christmas and a happy New Year

Neil Muhlhan  
Alinga Nursery

### **HERITAGE CONVEYANCING**

#### **Your Home - Your Heritage**

Professional efficient Conveyancing Service  
- Specialising in the Bellarine Peninsula

**Phone: Julie Stow (052) 51 3950**

### **Civil Celebrant**

**Keith Winter**

**Weddings, Namegivings  
and Special Ceremonies  
PHONE: 532269**



**D**RYSDALE  
**C**USTOMER  
**S**ERVICE  
**C**ENTRE  
**& LIBRARY**



**Hancock Street/  
Village Walk,  
Drysdale**

**O**ur new Drysdale Customer Service Centre and Library opened in the shopping centre in Hancock Street/Village Walk on December 11.

Staff look forward to serving residents of the Bellarine Pensinsula at these new premises.

Most Council services can be accessed by calling at the Customer Service Centre, and of course the full Geelong Regional Library service is offered at the new Library.

Please call in next time you visit the Drysdale Shopping Centre.

Phone enquiries should continue to be directed to departmental staff  
270 270 or the Customer Service Hotline 270 811



## DRYSDALE VILLAGE PIZZA AND PASTA BISTRO

To be found at the round-about in High Street, open 7 days a week. Dine in, take advantage of the BYO Licence and have a great meal in a very calm and pleasant atmosphere.

Our take-away service is fast and the food is just great. Party orders over \$40.00 will receive a 10% discount.

Home delivery is also available in the Drysdale/Clifton Springs area -minimum order \$8.00 - and you will have your meal in around 30 minutes.

Drysdale Village Pizza and Pasta have a wide range of pastas and sauces you can mix 'n match. We cater for functions, special occasions and children's birthday parties are great fun. All party hats, lolly bags and decorations are supplied.

Ring and book your party, function or special occasion with us on: 513937.

## CHUI YUAN CHINESE RESTAURANT

The Chui Yuan Restaurant in Drysdale offers you great food at reasonable prices.

The management and staff have much pleasure in introducing you to their exciting menu which has been compiled through years of experience in Australia.

They aim to please you with authentic Chinese, Thai and Malaysian Cuisine that will be to your entire satisfaction. Their expert staff will be willing to assist you and prepare any dish you may select for your enjoyment. Every meal is freshly cooked.

Bookings are now being taken for Christmas parties, break-ups etc. There are many 'Banquets' you could choose from.

Let us make your every visit a memorable occasion. Merry Christmas to everyone from Chui Yuan Chinese Restaurant.

## FAWLTY TOWERS

Have you tried the "Best Cappuccino" in Town?

You will find it at Fawltly Towers, Drysdale's oldest and best known Coffee Shop. Strategically situated in the Central Arcade in Drysdale it is just the place to take a relaxing break in your busy shopping day or meet your friends for a light lunch.

The luscious cakes are a temptation most find hard to resist and the quiches and other pastry goodies are some of the best you will find anywhere on the Peninsular. Eat in or take them home with you.

John Cleese has not been around lately. However, Trudy Mc-Pherson and her friendly staff will be delighted to welcome you.

Catering for private functions both in the cosy and inviting atmosphere of the shop or at out-

## DRYSDALE VILLAGE PIZZA & PASTA BISTRO

OPEN 7 DAYS

Dine in, Take Away  
for Home Delivery



Ph: 51 3937

If visiting the Bellarine Peninsula, drop in for a meal at the

## DRYSDALE HOTEL

- Friendly atmosphere
- Counter lunches and teas every day including Sunday
- Cosy log fires
- Geelong's first Pub-TAB facilities



LUNCH 12.00-2.00pm - TEA - 6.30-8.00pm  
Your host David Leahy and family  
High Street, Drysdale. Phone 512301  
(On Geelong-Portarlington Main Road)



side venues. Just have a chat to Trudy about your needs.

Open for eating Monday-Friday 9am - 4pm., Saturday 9am - 4pm. For that special roast on Sunday 9am - 4pm \$11.00 for two (2) courses plus tea/coffee.

### Drysdale Hotel

At the crossroads of Drysdale is the **Drysdale Hotel**. David Leahy and his family have been looking after the people of Drysdale for the past 18 years.

Over Christmas/New Year Festive Season we have Brian Sprague returning from the Queensland club circuit to entertain us on Friday and Saturday nights. If you haven't seen Brian, then you don't know what you're missing. 'Phone for reservations on 512301'.

The Bottle Shop is open daily, including Christmas Day, offering an extensive range of beer, wines and spirits, and also regular specials, changing every three weeks, through the Innkeepers Chain. Call and see Donny - he'll look after you.

Next door is the Pub TAB which is also open daily (except Sunday). There is also a terminal in the Public Bar for your convenience. Sky channel offers a direct telecast of all racing in both venues.

The cosy Dining Room is open every day of the year for counter meals from 12 - 2pm for luncheon, and 6.30 - 8pm for dinner. The chef Lionel Brown has also been looking after the patrons wishes for a long time and knows what you like. His specialities are cooking a nutritious home-cooked meal with all the trimmings - specialising in fresh local seafood and prime steaks. Main meals range from \$12.00.

For a great meal with excellent service, maybe a quick bet and a good bottle of wine, the **Drysdale Hotel** is the place for you.

### Tuckerberry Hill

#### 35 Becks Road, Drysdale

John and Margaret Tucker invite you to call and enjoy the experience of picking your own delicious blueberries.

We are on the Murradoc Hill slopes, with a panoramic view from Melbourne to Point Nepean, and everything in between, so be prepared for windy conditions.

The fruit is in season from December 26th through to the end of February. The question usually asked of us is - "What do you do with blueberries?" The obvious answer is - eat them!

They are delicious eaten fresh, with or without cream or ice cream, or in a fruit salad. They

**Chui Yuan** 酒翠  
Chinese Restaurant 家園  
(B.Y.O.)

TAKE AWAY & HOME DELIVERY  
FUNCTIONS & GROUP BOOKINGS  
A SPECIALTY  
QUALITY & CLEANLINESS ARE  
PARAMOUNT  
REASONABLE PRICES  
\* \$5.00 LUNCH SENSATION MENU

**Ph. 53 1788**

Shop 2, 26-28 High St. Drysdale, 3222.

**Tallywood**  
Boarding  
Cattery

 Wyndham Park  
177 Jetty Road  
Drysdale

Spacious individual runs  
Inspections welcome.  
Vaccinated cats only.  
All diets catered for  
Pick-up and delivery service  
Vivienne Benham  
Ph. (052) 51 2246

**BLUEBERRIES**  
AT  
**TUCKERBERRY HILL**

35 BECKS ROAD, DRYSDALE  
P.Y.O. 7 DAYS A WEEK, 9AM - 5PM  
from Boxing Day to end February  
COACH TOURS WELCOME  
Frozen blueberries (BYO Esky), jam,  
chutney. Topping and muffins for sale.  
Phone before visiting out of season.  
Picnic facilities available.  
Group tours by appointment.  
Other times by appointment only.  
**Ph. (052) 51 3468**  
**Fax (052) 53 2591**



can be cooked in muffins, cakes, puddings, pancakes, used in stuffing for meat dishes, or made into soup!

Blueberries need no peeling, no coring, no seeding - just wash and use them. They need no washing or blanching before freezing and are used straight from the freezer without thawing.

Nutritious, delicious, and so easy - blueberries are good for you too. They are rich in Vitamins A and C, and supply trace elements such as calcium, magnesium, phosphorous and potassium, while low in calories - only 42 per half cup.

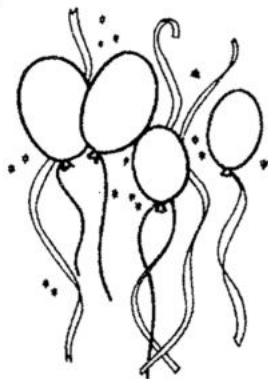
### ANGELS ON HIGH

Just over six months ago, Alan & Jan Morgan teamed up with Trevor & Julie Ann Rhodes to

take over the restaurant in High Street that was formerly Bradory's.

We felt that we wanted to make our own mark on the intimate restaurant so after much consideration changed the name to Angels On High. We hoped that this would be original and catchy. Many of our clients have since tried to guess how we arrived at Angels On High, so it has certainly created lots of interest. Come in and see us and we'll tell you about it.

The Angel theme is carried throughout the restaurant with several beautiful Angel prints on the walls. The base of each candlestick is adorned with an Angel, and an Angel bearing a scroll reading "Be an angel don't smoke" marks our non smoking area. The rear area of the restaurant overlooks a pretty courtyard garden complete with fountain and two terracotta Angels.



## Celebrate New Year's Eve '95 at

### Angels on High

\$35.00 per person

3 course meal, coffee & after dinner mints

Live entertainment by local group

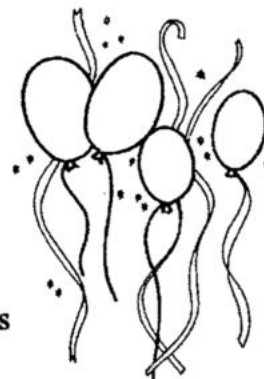
#### *Cross Section*

\* 1st sitting 6pm - 9pm \* each guest receives a complimentary glass of champagne on arrival

\* 2nd sitting 9.30pm - 1996 \* each guest receives a complimentary glass of champagne at midnight.

### Angels On High

16A High St. Drysdale, Phone/Fax 531440







We have a variety of menus at different times to suit most people in the area. Tuesday Lunch we have a set menu of 3 courses plus Tea or Coffee for \$8.50 per person. This has proved very popular with our more senior citizens.

On Tuesday, Wednesday and Thursday evenings we cater more for family dining with our \$10.50 "All-you-can-eat" with a difference. The difference is each course is brought to your table for you to serve yourself. You start with a basket of Trevor's home-made bread rolls and a Terrine of Soup, next comes Pasta & sauce and a casserole with rice. This is followed by a platter of assorted Roast Meats and vegetables. Finally there is a selection of desserts. Including cakes, mousse, fruit salad or our special Angel Meringue served with ice-cream.

At lunch time on Wednesday, Thursday & Friday our \$10.50 All-you-can-eat is served as well as a variety of quiches & lighter meals for our local business people.

Friday and Saturday evenings our A la carte menu is on for those with a special occasion to celebrate or for when Mum & Dad are able to come out for a quiet dinner without the children! Our extensive menu features oysters, caesar salad and our home-made gnocchi for starters. Buffalo and Carpetbag Steak are our speciality Main Course dishes and there's an array of delicious hot & cold desserts.

If you haven't yet experienced heavenly dining, make Angels on High your next night out.

## GIFT WRAPT

GiftwraPt is situated in the shopping complex next to Tuckerbag.

We stock an extensive range of cards and gifts for all occasions. Our cards include the Hallmark Brand (for those special occasions when you care enough to send the very best) and many other quality labels, displaying a broad range from special occasion cards, novelty and humorous to post cards.

We also stock an impressive range of affordable giftwares to suit all budgets. Including glassware, toiletries, prints, unusual lamps, costume jewellery and of course teddy bear and fairy ornaments.

So why not select your gift with an appropriate card and have it giftwrapped at no extra cost, or just drop in for a browse and a chat with Jenny. Everyone is welcome at giftwraPt.

To all our valued customers we wish you a very Happy Christmas and a safe and prosperous New Year.



## GiftwraPt

**SEE OUR EXTENSIVE RANGE OF  
1996 CALENDARS: INCLUDING ANNE GEDDES  
10% OFF CALENDARS WHEN YOU  
BRING THIS ADVERTISEMENT.  
LIMIT ONE PER VOUCHER.**

**Shop 5 Drysdale Village Shopping Centre Drysdale.  
Phone: 052-531856**

## Fawlty Towers

**HOMEMADE GOURMET FOODS  
TAKE-AWAY COFFEE LOUNGE**

Join us in our cosy lounge for the best coffee, yummy cakes and eats in town Open 7 days a week, Sat. and Sun. 9 am to 4 pm Orders taken for special occasions Prop. Trudy McPherson  
Shop 6, The Arcade, Drysdale, Ph. 513312

# Mary's Beauty Spot

**1 High Street, DRYSDALE**

(Old National Bank Building)

**Telephone: 53 2330**

**INTRODUCING**

## **"THE MEN'S CUTTING ROOM"**

**ALL MEN'S CUTS ONLY \$10**

## **LADIES HAIRDRESSING**

**PERMS Only \$40 receive FREE treatment**

**☛ \*ACRYLIC NAILS\* ☛**

**\$40 Full Set**

**\*WAXING\***

**Full Legs \$25.00 1/2 Legs \$15.00**

**All Waxing Available**

**\*FACIALS & MAKE OVERS\***

**FREE Lash Tint with Facial**

**Bridal & Debutante Hair Styling & Make Overs**

***Christmas Gift Vouchers and Gift Packs Available***

***Customer Parking***

***CRECHE***

**CALL IN AND SEE**

**MARY - TRACE - WILMA - LEE - LYNNE**

***WISHING ALL OUR CLIENTS A MERRY CHRISTMAS AND  
A PROSPEROUS NEW YEAR***



### Dallimores Tea Rooms

More and more people are discovering the delights of Dallimores Tea Rooms in High St, Drysdale.

Similar in concept to the marvellous tea rooms found in the Dandenongs, owners Lorayne & Keith Winter have beautifully restored their Federation style weatherboard home to incorporate two distinctive eating areas. First comes a cosy room with circular tables, lace tablecloths & the original open fire place. Then a large sunny conservatory type room with ceramic tile floor, marble-topped outdoor furniture, & pot plants hanging from an intriguing collection of antique scales.

All cakes & meals served are made & prepared by Lorayne, & her Devonshire Teas are an afternoon favourite. Paintings by local artist Hugh Guthrie & also an interesting collection of framed 1930-1950 advertisements, are offered for sale.

Open every day 10.30am to 5pm from 16 December to 31 January, & thereafter closed Mondays & Tuesdays, Dallimores is at 23 High St, Drysdale. Phone 53 2269.

### ELLIOTTS NEWSAGENCY AND CONVENIENCE MART 12 HIGH STREET DRYSDALE

The Elliott family has developed the fresh food side of their business throughout their 6 years in the business. They specialise in fresh sandwiches and rolls with your favourite filling including their very popular chicken. Fresh pies, pasties, sausage rolls and assorted lines are available from their many suppliers such as Clarkes, Beaumonts and Gillies.

For those who would like some ice creams try from Elliotts large range of Coney scoop ice cream. Cadburys, Peters and Streets confectionery is also their speciality with an extensive range of local and imported chocolates.

On these hot days choose from a large selection of cool drinks from their many fridges. Try the new oasis and quench drinks.

#### FRUIT AND VEGETABLE BARN

Drop in and check out our fresh fruit and vegetables - you will be delighted with the large variety and the low prices.

yes.



**The perfect Place  
for Light Lunch  
or Afternoon Tea.**

**23 High St. Drysdale**

**Phone 53 2269**

*The Springdale Messenger*

**CARPET  
STEAM  
CLEANING**

MARICK CARPET  
CLEANING  
**DICK BOLAND**  
Ph 59 2217

Mobile (018) 317 065

Carpets, Lounge Suites  
Car Upholstery  
Stain Guard Available  
**FREE QUOTES**

**Mortimer's  
Petrol Station &  
Convenience Store**

**97 High St. Drysdale**  
Ph. 51 2603

- \* Petrol, Autogas
- \* Bait and Fishing Supplies

**CAR WASH NOW OPEN**  
Wash \$3.00  
Wash and Wax \$4.00 with petrol  
**OPEN 6.00 AM - 10.00 PM**



# **"THE CHRISTMAS PROGRAMME 1995 - BELLARINE PARISH -**

## **THE UNITING CHURCH IN AUSTRALIA"**

We would like all readers to know of our Christmas activities for this year, and to invite all to share with us in joy and with thanksgiving:

The churches will be suitably decorated and children will be at times participating:

Saturday 16th December  
8.00pm ST. LEONARDS ON THE  
FORESHORE - A time of Carol Singing with  
items from invited artists - An occasion to celebrate with family ..

Sunday 17th December  
9.00am PORTARLINGTON U.C.:  
Worship - Rev. W. Lutton - with Sunday School  
Christmas presentation ..

Sunday 17th December  
10.30am DRYSDALE U.C.: Rev. Dr. R.  
Gallacher - A Parish Choir to present a modern  
Christmas cantata - "King Jesus is His  
Name"(Joseph Linn) ..

Sunday 17th December

Noon DRYSDALE U.C. CENTRE:  
Following worship and the Parish Choir Christmas  
presentation, a shared Christmas luncheon  
will be held ..

Sunday 17th December  
8.00pm PORTARLINGTON U.C. - The  
Parish Choir to repeat the modern Christmas  
cantata, "King Jesus is His Name" (Joseph  
Linn)..

Sunday 24th December WORSHIP &  
CHRISTMAS THEMES-  
9.00am PORTARLINGTON U.C.-Rev.  
Dr. R. Gallacher  
10.30am DRYSDALE U.C.-Rev. Dr. R.  
Gallacher  
11.00am BELLARINE U.C.- Rev. G.  
Johnson  
7.00pm ST. LEONARDS U.C.- Rev.  
Dr. R. Gallacher ..

Monday 25th December  
CHRISTMAS DAY SERVICES-  
8.00am DRYSDALE U.C. - Dr. P. Munster  
9.00am PORTARLINGTON U.C. -  
Rev. Dr. R. Gallacher ..

\*\*\*\*\*

### **Trinas's Hobby Ceramics**

Day & Evening  
Classes



Duncan Products  
Greenware &  
Firing Service

20 Elgin St., Drysdale.

Ph. (052) 513 795

### **Grills, Double & Co.**

### **BARRISTERS & SOLICITORS**

"Gallop House"  
15 Hancock St.

**Drysdale**

Ph. (052) 53 1966

*Seasons Greetings  
from*



### **Drysdale Village Drycleaners**

Shop 2,  
21 Clifton Springs Road  
Drysdale

TRADING HOURS

Mon - Fri 7.30 am - 5.30 pm

Saturday 9.00 am - 12.00 noon

Phone 51 3990



**ST. JAMES' ANGLICAN CHURCH,  
DRYSDALE.  
SPECIAL DECEMBER 1995 SERVICES**

December 17th      At 7.00pm    Carol  
Service  
December 24th      At 11.30pm    Holy  
Communion  
December 25th      At 9.00am      Holy  
Communion

**ST. THOMAS' CHRISTMAS SERVICE  
TIMES  
NORMAL TIME MASSES:-**

**SATURDAY:-**  
6.30pm      St. Leonards  
6.00pm      Portarlington

**SUNDAY:-**

7.45am      Drysdale  
11.00am      Drysdale  
9.30am      Leopold  
9.30am      Portarlington

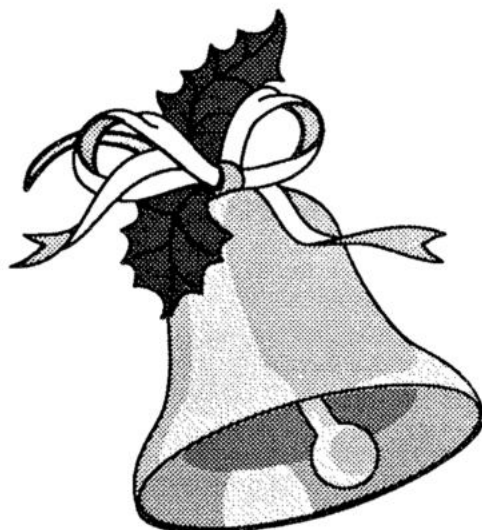
**CHRISTMAS TIME MASSES:-**

**SUNDAY CHRISTMAS EVE:-**

6.30pm      St. Leonards  
8.00pm      Leopold  
Midnight    Portarlington

**MONDAY CHRISTMAS DAY:-**

7.45am      Drysdale  
11.00am      Drysdale  
9.30am      Leopold  
9.30am      Portarlington



**Geelong & Bellarine Podiatry Centre**

**PAUL GRAHAM    KARMEN KRASIC**  
B.App.Sc.(Pod.) M.A.Pod.A.    B.App.Podiatry. M.A.Pod.A.

- Diabetes Management and care
- Ingrowing or damaged toenails
- Lower limb, ankle & foot aches and pains
- Prescription & made to measure footwear

**GEE LONG**  
209 Malop St.  
Ph. 23 1531  
MON -  
THURS.



**DRYSDALE**  
27-29 High St.  
Ph. 51 2958  
FRIDAY  
ONLY



**WISE GUYS  
MENS HAIRSTYLIST  
"Its the cut that counts"**

So come and see  
Wendy, Jenny & Kelly  
for all mens and boys styling  
\* STUDENT AND PENSIONER \*  
DISCOUNTS

**No appointment necessary**

**Shop 1,**

**Wyndham Street,  
Drysdale.  
(Next to  
Bakers Delight)**



**53 2503**

## Community notices

### **St. LEONARDS YACHT CLUB AND MOTOR SQUADRON Inc.**

Sailing is an inexpensive sport for the whole family. After the initial cost of a boat (which can be as little as two hundred dollars) the family membership is only fifty five dollars for the whole year at our yacht club. Dinghies can be used for both fishing and sailing and can be housed at the club ready for hours of family fun.

Members have the use of a fully maintained clubhouse, which has canteen, shower and toilet facilities. Members also have the use of their own boat ramps, jetty, boat storage sheds, and yacht rigging areas. Sailing instruction is available from qualified sailing instructors attached to the club and the club welcomes all new members, especially student- aged members.

The St. Leonards Yacht Club and Motor Squadron is located on the Lower Bluff Road in St. Leonards and competition sailing is conducted every Saturday and Sunday from December through to Easter.

Any enquiries can be directed to:  
MURRAY HALL (Club Captain)  
on 052 572106 or by mail to  
St. Leonards Yacht Club and Motor Squadron Inc.  
P.O.Box 500, Geelong, Victoria. 3220.

### **COMMUNITY INFORMATION & REFERRAL ASSOCIATION INC.**

Christmas Greetings from the Bureau.

Corio Bureau will close on 21st December, 1995 and re- open on 15th January, 1996.

Bureau is situated at Corio Community Health Centre.  
Phone 75 6772.

South Barwon Bureau will close 22nd December, 1995 and re-open on 8th January, 1996.

Bureau is situated at South Barwon Community Health Centre.  
Phone 44 2601.

### **BELLARINE PENINSULA CHRISTIAN OUTREACH "CHURCH BY THE BAY"**

Cnr. Pigdon St and Portarlington Rd,  
Portarlington

Phone: 593378

Pastor Noel Williams - Phone 512218

Associate Pastor Richard Duffield - ph 592526

You will find a warm welcome at B.P.C.O., during December as we celebrate the birth of Our Lord Jesus, and throughout the year!

### December Events:

# Drysdale Knit & Sew



Shop 6,  
3 Wyndham St.  
**DRYSDALE.**

Patchwork & Quilting  
Supplies, Wool,  
Haberdashery

**Ph. 51 2116**

# Rosse McConnell



## ELECTRICIAN

Domestic, Commercial  
& Industrial  
Wiring & Maintenance

Phone: 51 3620    Mobile: 018 524 038  
NECA            REC.5264  
4 Bennett St. Drysdale.

# PORTARLINGTON HOLIDAY RESORT & INDOOR POOL CENTRE



Smythe St. Portarlington  
Swimming lessons  
Water aerobics  
Hydrotherapy sessions  
Squad training  
Open 7 days

**Contact:**  
**Michael and Sue Boylen**  
Proprietors  
**Ph: (052) 59 2910**

Friday 15th, from 6.30pm:- Sausage sizzle and "Carols by Candlelight" in the Church grounds.

Sunday 17th, at 10.00am:- Sunday School Christmas Celebration and Prize-giving.

Sunday 24th, at 11.15pm:- Christmas Eve Midnight Service.

Monday 25th, at 9am-10am:- Christmas Day Service.

### **THE NURSING MOTHERS ASSOCIATION OF AUSTRALIA -BELLARINE GROUP.**

Group Leader & Counsellor: Romaine Day - ph 513652

Counsellor: Jenni Trudgeon - ph 512497

Counsellor (Ocean Grove group): Glynis Robb - ph 512149

Our aim is to support and encourage mothers who wish to breastfeed their babies. Our 7

days a week counselling service continues throughout the holiday season, so if you live in this area or are just visiting, you are welcome to contact us for breastfeeding help and information.

#### Dec/Jan activities:

Coffee Morning - Wed. 13th Dec., from 10am. Phone 513652 for venue details. Babies and toddlers welcome too.

Beach Day:- Wed. 10th Jan., from 10.30am. Portarlington Beach, RHS of pier. Don't forget sun-hats, sun-screen etc.


### **Drysdale Community Craft Shop**

Drysdale Community Craft Shop committee and members thank everyone who has supported our shop over the 13 years we have operated.

We are still going strong with extra new stock arriving for Christmas.

Gifts for all the family


## **DRYSDALE COMPUTER CENTRE**



**Computers**  
DX4-100 from \$1,450.00  
(4Mb RAM, 850Mb HDD 14" Monitor)  
Pentium 90 from \$2,100  
(8Mb RAM 850Mb HDD 14" Monitor)  
**Multimedia Christmas Special**  
From \$2,450.00 - Win a trip to Hong Kong or Hawaii  
Printers / Modems / Software - Games / Business  
Repairs / Upgrades / Advice

### **Stationery**

Paper - Fax Rolls - Printer Ribbons - Note Books  
Most Office and Home Stationery in stock  
**All School requirements**  
**LAY-BY Now for 1996**



**Shop locally and save money and time.**  
**Shop 7 / 3 Wyndham Street Drysdale - Phone/Fax 531 360**

Gift wrapping just ask

Shop hours Wednesday to Monday  
10am till 5pm  
Tuesday 11am till 2pm

We are situated next to the Uniting Church in High Street.  
Shop locally and save.

### **DRYSDALE COMMUNITY HEALTH CENTRE AUXILIARY**

The final meeting for the year of the Drysdale Community Health Centre Auxiliary will be a Christmas Party at the centre on December 12th. All members welcome.

The committee and members thank everyone who has supported us over the last year especially our Christmas Hamper competition.

Our first meeting for 1996 on the second Tuesday of February we will take the ferry from Queenscliff to Sorrento weather permitting.

Transport is available. Enquiries Norma 512 351

We wish you all a safe and happy Christmas.

### **CLIFTON SPRINGS GARDEN CLUB INC.**

Our Garden Show on the 18th November was a great success; thank you for the support. After the terrible weather, we wondered if anyone would have flowers left for entries, but it was amazing to see the lovely, colourful

bunches of flowers on display. Part of the proceeds will go towards purchasing Sasanqua Camellias for an area of North Bellarine Hostels' garden. These will be planted out end of the summer and will eventually form a lovely walkway.

Our meetings start 3rd Monday in February at Uniting Church Hall - Drysdale, and new members are very welcome. Local Traders are very supportive when we have our Garden Show and members all enjoy the day, especially if they are lucky enough to win.

### **BELLARINE HISTORICAL SOCIETY**

#### **SHEPHERDS COTTAGE PROJECT:**

After remaining in storage for several years the Early Shepherds Cottage, rescued from demolition by the Bellarine Historical Society, has now been re-located to a site adjoining the Historical Drysdale Railway Station, with assistance from the City of Greater Geelong.

Plans for restoration of the Cottage are well in hand to begin in early 1996 -- more details next issue!

\*\*\*\*\*

### **OLD COURT HOUSE MUSEUM, DRYSDALE**

**OPENING TIMES** - EACH WEEKEND,  
JANUARY TO MAY 1996

SATURDAYS - 11.00AM TO 2.00PM  
SUNDAYS - 1.30PM TO 4.30PM

**Suzanne Margan**  
**Cooking**  
**Special**  
**Christmas**  
**Goodies**  
**PH. (052) 512205**

**Sarah's Fitness Centre**  
33 Murrodoc Rd, Drysdale  
For all your fitness needs.  
Classes include Step Reebok, HI/Low, Cross Training  
and Gym Circuits  
Lite Pace for beginners & over 50's  
Toddlers Gym for the little ones.  
Fully Equipped Gymnasium  
New to Sarah's **LINE DANCING TUESDAY NIGHTS**  
7.30-9.30PM  
Enquiries Ph 531795



\*\*\*\*\*

A date for your DIARY \_\_\_\_\_ on Saturday 20th April 1996 Bellarine Historical Society will hold a Pioneer Family Day at the Old Court House Museum, Drysdale, the Drysdale Community Hall and the adjoining Car Park with special Historical Displays.

Participating groups will be:-

Bellarine Historical Society,  
Queenscliff Historical Society,  
Geelong Family History Group  
"First Fleeters"- descendants of the 1st Fleet

Descendants of the 1852 arrival of the "Georgiana"

Portarlington & Drysdale Lions Club  
Drysdale Fire Brigade  
Drysdale R.S.L.  
Springdale Community Cottage  
Drysdale C.W.A.  
Bellarine Peninsula Tourist Railway  
Schools of the Bellarine Peninsula  
--- and More ---

Descendants of Pioneer families are invited to bring family histories, photographs etc.

## **DRYSDALE C.W.A.**

Another year ended and a number of worthwhile activities achieved. We really do enjoy whatever we choose to interest ourselves in, and local groups benefit from our donations. We are very lucky to have such faithful supporters, without them our donation list would be much smaller. This year we have joined in the Geelong Advertiser "Adopt a family for Christmas" and have asked for a large family to provide gifts and Christmas goodies for. The

family has the parcels delivered before Christmas so they can enjoy the day even though money may be a little short in their home.

We felt it to be a worthwhile cause and it will give someone else pleasure. Our meetings start again 2nd Tuesday in February and would like to see new members join us.

Shirley Lindsay



### **DRYSDALE REMOVALS & STORAGE**

**Local, Country,  
N.S.W. & S.A.  
PH. (052) 51 3674**

### **BARLEY UPHOLSTERY**

**SPECIALISING IN RECOVERING ALL  
TYPES LOUNGE FURNITURE,  
KITCHEN CHAIRS, ANTIQUES ETC.**

**9 Mortimer St.  
Drysdale, 3222  
Ph. 51 2487**



### ***The Possum's Nest***

**Quality Out Door  
Furniture  
Wood Heaters  
Crafts and Gifts**

### **OPEN 7 DAYS**

**Adult and Children's  
craft classes  
2 Hancock St. Drysdale  
Ph. 532021**

## **SPRINGDALE CLASSES**

### **TERM 1 - 1996**

The full list of classes for Term 1 1996, will be published in the February issue of the Messenger. They will include many craft courses e.g. Double Sided Decoupage Glass Plate, and Smocking also computers and creative writing. Office opens for booking last week in January - Ring 531960 for further information.

#### **DRIED FLOWERS**

#### **AND BOWS:**

Enhance your home with early created stylish dried flower arrangements. We'll be making a wreath, small basket, terra cotta pot or swa. Test your skill using the range of flowers supplied or bring your own.

Date: Tues. March 12 x 3 weeks  
Time: 1.00-3.00pm  
Cost: \$25.00

#### **FIRST AID**

#### **LEVEL 1 PLUS**

#### **CHILD CARE**

#### **MODULE:**

Workplace Level 1 plus childcare first aid module (8 hour course). Certificated course.

Date: Tuesday March 12 x 3 weeks  
Time: 7.00-9.30pm

Cost: \*\$50.00

\*This discount charge is dependant upon having 10 participants in course.

#### **OPEN DAYS**

Are you new in the area? Do you wish to take up new hobbies, make new friends and acquire new interests? Come to Open Day at the "House" to be held on the first Tuesday of each month.

Childminding available.

Dates: Tuesday, 6th February, 5th April and 2nd April

Time: 10.00-12.00pm

Cost: No charge

#### **LINE DANCING:**

Have fun, join in this dance group and exercise at the same time - most ages able to participate - held at Drysdale Community Hall.

Date: Saturday, 13th January x 10 weeks

Time: 2pm-4.00pm

Cost: \$3.00 per session.



**18-20 HIGH ST. DRYSDALE.**

**OPEN:**  
Monday, Thursday, Friday, Saturday  
Sunday 10am - 5pm

**New Members always Welcome**

#### **Salvation Army Family Stores**

Mortimer St.

Drysdale

**Ph. 51 2475**

**Plenty of Bargains  
The Place to Shop**

Come and see us  
We are here to Help You

#### **ELECTRICAL CONTRACTOR**

**Terence Britt**

**HOUSE WIRING**

**SPECIALIST**

**"A" Licenced No. 25316**

**L.E.C. No. 11088**

**Ph. 51 3727**

**Mobile 018 521 870**