

The SpringDale Messenger

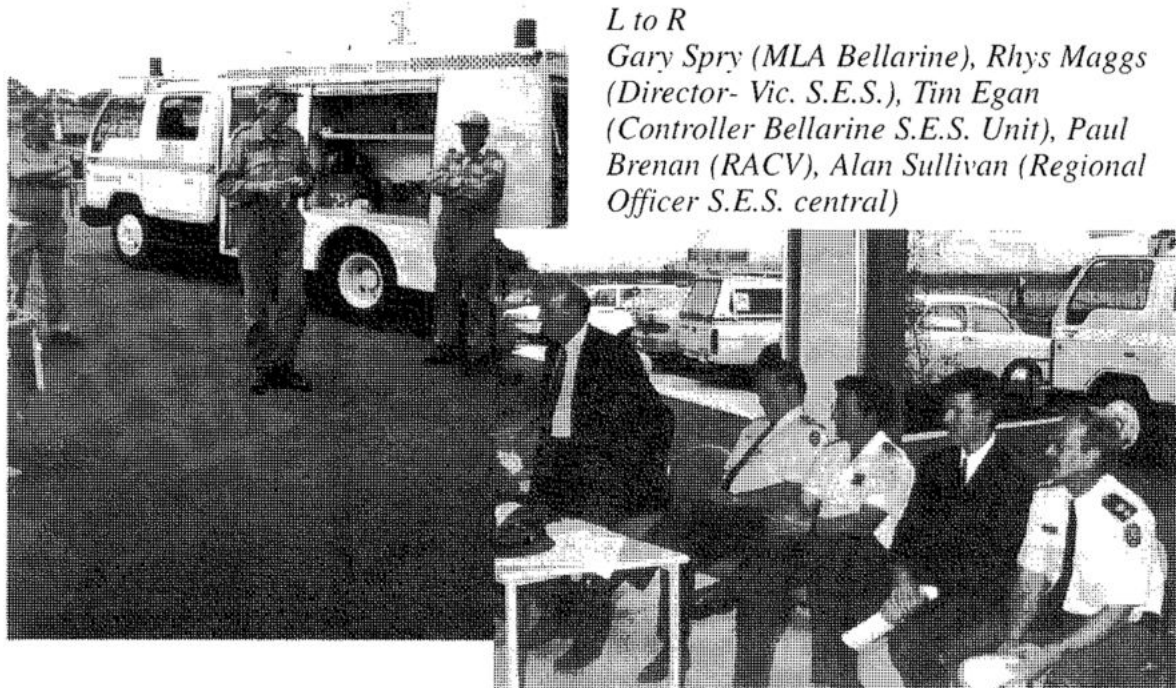
Your Free
Community
Newspaper

Compiled and published by the SpringDale Community Cottage Inc

Circulation 3,700

Vol 6 No.4, May/June 1996

New S.E.S. Vehicle for Bellarine Peninsula



L to R

Gary Spry (MLA Bellarine), Rhys Maggs (Director- Vic. S.E.S.), Tim Egan (Controller Bellarine S.E.S. Unit), Paul Brennan (RACV), Alan Sullivan (Regional Officer S.E.S. central)



THRIFTY-LINK
HARDWARE

YOUR HANDY
HARDWARE
STORE

**DRYSDALE
VILLAGE
HARDWARE**

(052) 51 3267

THE ARCADE
HIGH STREET
DRYSDALE, 3222.



**Elliott's
Convenience
Supermarket & Newsagency**

**12 High St. Drysdale
Ph 512401/512776**

The SpringDale Messenger

The SpringDale Messenger is compiled by the SpringDale Community Cottage, 14 Princess St. Drysdale.

Postal: P.O. Box 80, Drysdale, 3222.

Advertising and Enquiries: 53 1960.

Community Groups, Churches, Sporting Clubs, Service Clubs, etc., are invited to submit details of their future activities for regular inclusion in the Community Diary section, or as articles in the news section as appropriate.

Copy may be typed or printed with a good ribbon (preferred), or legibly handwritten and left at the SpringDale office at 14 Princess St., in the box at Elliott's Newsagency, or posted to P.O. Box 80, Drysdale, 3222.

Next Publication:

Copy deadline: 25th June, 1996.

Distribution: 12th July, 1996.

Views expressed in this newsletter are not necessarily the views of the Publisher, the SpringDale Community Cottage.

ADVERTISING AND ARTICLES:

Maureen Naughton,
SpringDale Community Cottage, Phone
(052) 53 1960.

To ensure publication in a specific issue, copy must be submitted prior to deadline.

Layout and Design of this issue by
Pagination Design Services, Geelong.
Ph: (052) 23 2494



BELLARINE FOOT CLINIC

Paul B. Shannon,
Lyndal McGuire,
James Gerrard
PODIATRIST'S
100 The Terrace
Ocean Grove, 3226.
39 Fenwick St.
Portarlington, 3223
64 Bellarine Highway
Newcomb 3219
Ph: 22 4147

Contents

EMERGENCY SERVICES	3
S E S	3
POLICE REPORT	3
DRYSDALE FIRE BRIGADE	5
AMBULANCE STATION REPORT ..	7
NON-SLIP CAN BE DECORATIVE .	9
COLLEGE ESTABLISHES LOCAL LINKS	10
PIONEER FAMILY DAY:	12
DEDICATION OF MODEWARRE	
W.W.I MEMORIES REVISITED	15
TAX CORNER	16
BELLARINE SECONDARY	
COLLEGE NEWS	17
THANK YOU	17
SPRINGDALE COMMUNITY COTTAGE	18
NEW KINDERPLAY NEW	18
DISCOUNT COUPON	18
BELLARINE JONGLEURS	19
CLIFTON SPRINGS DELL	
ADVISORY COMMITTEE	19
LEGISLATION PUSHES FOR RESPONSIBLE PET	
OWNERSHIP	20
NATUROPATHY:	21
BELLARINE AGLOW	
FELLOWSHIP	22
Community Notices	23
EXTENDING THE HOME	24

EMERGENCY SERVICES

SES

A NEW TRUCK FOR BELLARINE STATE EMERGENCY SERVICES

The Bellarine SES Unit recently took delivery of a new Ford Trader. The Trader, capable of seating seven (7) members will be of great assistance to the unit in the service they supply to the Drysdale, Leopold, Ocean Grove, Portarlington, Indented Heads, St Leonards and Queenscliff communities.

The members of the unit (all volunteers) were pleased to accept delivery of the truck in a ceremony headed by Mr Garry Spry (MLA Bellarine), Mr Rhys Maggs (Director Vic. SES) Alan Sullivan (Regional Officer Vic.SES) and Mr Paul Brenan (RACV). Also present were Mr Jim Hershelwood (COGG) and Mr Bill Hardigan (Legislative Council).

The ability to store and carry both equipment and personnel will greatly improve the units responses to such emergency situations as windstorms, searches and floods, as was experienced last year at Barwon Heads.

The Bellarine Unit has 29 active members who come from all over the Bellarine Peninsula and it assists other State Emergency Service Units within the City of Greater Geelong and beyond when required.

"These people do a tremendous job," said Mr Spry, "and the work done is greatly appreciated by people in the community."

The Government also appreciates the support of the City of Greater Geelong, which actively supports SES Units. The value of this truck is \$70,000. It is one of six purchased during the year for SES use and is part of the Government's eight year SES vehicle issue plan.

Any person wishing to make enquiries regarding the SES can ring 264771 (business hours).

Lorraine Hall for Controller.

POLICE REPORT

FAREWELL/HELLO

Senior Constable Mark WHITE has fulfilled a long time ambition to become officer in Charge of his own Police Station, at Merino where has previously resided. He is replaced by Senior Constable Barry COOMBS, a long time local resident who has been performing excellent work in Geelong for many years.

NEIGHBOURHOOD WATCH

There are currently two very successful schemes that cover the northern half of Clifton Springs bordered by Bayshore Avenue, Beacon Point Road and Whitcombes Road. We are in the final stages of planning FOUR more areas to cover the remainder of Clifton Springs and all of Drysdale. Plenty of advance warn-

Chui Yuan
Chinese Restaurant
(B.Y.O.)

酒翠
家園

TAKE AWAY & HOME DELIVERY
FUNCTIONS & GROUP BOOKINGS
A SPECIALTY
QUALITY & CLEANLINESS ARE
PARAMOUNT
REASONABLE PRICES
* \$5.00 LUNCH SENSATION MENU

Ph. 53 1788

Shop 2, 26-28 High St. Drysdale, 3222.

NEO LIFE
Australia's Health Company

Natural/Organic
Nutritional
Supplements

Salmon Oil

- ☑ 100% Pure Salmon Oil
- ☑ Provides Omega-3 Fatty Acids

which have been found to be effective in reducing symptoms of arthritis and may also help reduce cholesterol levels.

Ring for free brochure on all our products.
Gary & Dawn Caldwell - Ph: 532049

ing will be given of meeting times and locations for those interested in these citizen run, Police Sponsored Community Schemes.

EMERGENCY SERVICES CO-OPERATION

By the time this is published Captain Filbay of Drysdale, CFA, and myself will have inspected the Fire/Disaster Evacuation Plan of the new Christian College Bellarine Campus, Collins Street, Drysdale.

It has been arranged for a Police Motor Driving School Instructor from Melbourne to facilitate S.E.S. Instruction to the Bellarine Peninsula S.E.S. staff on the proper conduct and provisions of driving an Emergency Vehicle.

THEFTS FROM VEHICLES

If your car is interfered with locally then we insist we be told about it and this includes stealing from it as well as badges being collected. If anyone has any suspicions as to the identity of recent "collectors" then we would be most interested.

LETTERBOX AND EXPLOSIVES

There have been two instances recently of insane youth behaviour involving letterboxes, petrol, a form of fireworks and soda syphon bulbs. The method of use will not be discussed here but obviously shrapnel from the small green CARBON DIOXIDE (C02) bulbs when exploded will remove fingers, mutilate faces and obviously WILL CAUSE DEATH.

We beg parents to monitor the adventurous experiments of their children and if we can help identify any items of parental concern in this regard then please contact us immediately.

CLIFTON SPRINGS PRIMARY

Complaints from Clifton Springs Primary reveal that certain youths are congregating behind the portables along the creek. They are causing different types of damage and litter to the surrounds. There is also some concern of under age drinking of liquor.

Whilst practicing sport within the grounds is acceptable to the school, we warn that offenders indulging in any anti social behaviour will be prosecuted.

If visiting the Bellarine Peninsula, drop in for a meal at the

DRYSDALE HOTEL

- Friendly atmosphere
- Counter lunches and teas every day including Sunday
- Cosy log fires
- Geelong's first Pub-TAB facilities



LUNCH 12.00-2.00pm - TEA - 6.30-8.00pm

Your host David Leahy and family

High Street, Drysdale. Phone 512301

(On Geelong-Portarlington Main Road)



Giftwrap

Selection of cards, gifts, crystal, prints, fine china, toiletries, silk flowers.

Shop 5 Drysdale Village Shopping Centre Drysdale.
Phone: 052-531856

SPRINGDALE COMMUNITY

COTTAGE

Present

LINE DANCING

Sat. afternoons 2.30 - 4.30 p.m.

at Drysdale Community Hall

Admission \$3.00
Beginners and experienced
all welcome
Enquiries Phone 53 1960



The Springdale Messenger

DRYSDALE FIRE BRIGADE

'Volunteers serving the Community'

Drysdale Fire Brigade is a fully volunteer Brigade which has been an important part of the Township of Drysdale since 1944. It has a membership of over 50 who come from all walks of life in our local community. The Drysdale Fire Brigade consists of the Drysdale Urban Fire Brigade and the Drysdale Rural Fire Brigade but operates mainly as an 'Urban' Brigade. It is housed in the Fire Station which is situated in Princess Street in the middle of the Township.

The Brigade operates under the control of the Country Fire Authority (CFA) who supply and maintain the 'Urban Pumper' and the 'Rural Tanker' together with basic Fire Fighting Equipment. The Brigade, through various fund raising activities, provides all other equipment and vehicles considered necessary to operate and maintain an efficient and progressive Brigade in an ever growing community.

There are many facets that go to make up a successful Brigade. It is not just a matter of ensuring enough volunteers are available to turn out to actual fires, in fact and fortunately this is the lesser activity of the Brigade. The Brigade must ensure that vehicles, equipment and

personnel are ever in readiness to turn out as required under the standards of fire cover.

The major and most important activity is the checking and testing of vehicles and equipment on a regular basis and training to ensure as many volunteers as possible are familiar with fire fighting techniques, vehicle, equipment and communications operation. Training is carried out at Brigade level, Group level and at the CFA Training Complex at Fiskville near Ballan.

The Brigade is affiliated with the Victorian Urban Fire Brigades Association which represents Brigades and volunteers in raising and negotiating broader issues with the CFA. The Urban Association is also responsible for the organisation and control of Urban Competitions. The competitions are designed to hone the skills of younger firefighters in the handling of hydrants, hoses, couplings and ladders and in the operation of Pumpers through training for the 'Pumper' event. Training for the competitions also ensures the fitness of team members and attending competitions throughout Victoria builds goodwill and 'mateship' throughout the volunteer organisation.

Mobility and Independence

All Brands of Scooters & Wheelchairs Serviced
(All Work Guaranteed)

- | | |
|----------------------|------------------------|
| • Engineered Rails | • Grabrails |
| • Home Modifications | • Ramps |
| • Scooters | • Wheelchairs |
| • Walking Aids | • Bathroom/Toilet Aids |



Professional Service and Advice
30 Years Experience
OBLIGATION FREE TRIALS AND QUOTATIONS

HELPING HAND DISABILITY AIDS

PH: 532 159 or 0419 500 479

Shop 5, Village Walk Drysdale 3222 - Fax: 531 022


FLEXI-BEDS®



CALL US WHEN YOU NEED A HELPING HAND

The Drysdale Brigade considers this competition aspect as most important and strongly supports it's Competition Team. It is also an avenue through which the Brigade attracts many of its volunteers at a younger age, (16 years) who develop through this very demanding sport into dedicated volunteers who stay with the Brigade for many years, in fact, in many cases, a lifetime! The Competition Team, together with the Discipline (Marching) Team are considered to be amongst the best in the State as widely reported, at the recent State Championships at Bendigo achieving second place in 'A' Class, equal first in the 'Wet' Aggregate whilst still the record for the 'A' Class Hose and Reels Eights and the Marching Team winning outright the Discipline contest at Mildura in 1993. These achievements have really put Drysdale 'on the map' in fire brigade circles throughout Victoria as over 100 brigades attend the State Championships and the brigade attends about 12 competitions throughout Victoria each season.

During the winter months Brigade members attend 'Dry Marshall' Competitions run by the Geelong Fire Brigades Association at Beckley Park.

The next activity that is most important in the Brigade is the Portable Fire Fighting Appliances (PFA) Servicing in the Drysdale/Clifton Springs and Portarlington areas which not only supplies the Brigade with much needed funds but also allows the community to have direct contact with volunteers as they carry out the servicing and allows the volunteers to get to

know the layout and fire risks of the majority of community, commercial and industrial buildings in our area.

Funds raised from PFA Servicing are supplemented by the Annual Garage Sale, occasional Debutante Ball and other activities organised by a very active Ladies Auxiliary. In addition, the Brigades Social Committee are very active in raising funds of which their major event is the very successful Melbourne Cup Day Lunch held for the first time last year at the Clifton Springs Community Centre.

The Brigade is part of CFA Region 7 whose Headquarters are in Separation Street, North Geelong and the Brigade liaises with the Region Officer (RO) Bob Barry for operational matters and Area Manager Lex De Man for administrative matters, and other Headquarters staff for everyday matters.

The Brigade is a member of the Bellarine Fire Brigades Group who organise communications throughout the Group Brigades, support at fires between neighbouring brigades and training at a Group Level. The Group also organises 'Task Forces' which may be sent to fight fires in any part of Victoria or Interstate, and Drysdale firefighters have been included on many occasions.

The Brigade is currently negotiating with the CFA for a new Fire Station which it is expected will be built in the next financial year on the current site of the Station and house next door. The Brigade is endeavouring to ensure that the building will cater for the Brigades current and

Funeral information at SpringDale Community Cottage

*Call in for free
information or advice
about funeral planning.*

**Open every Friday
1pm-5pm
Ph: 513626 all hours
14 Princess St. Drysdale.**

Hepner
Funeral Services
We Care

HENDRY CYCLES

**Now at two great locations:
Ocean Grove and Drysdale.**
Time to upgrade your bike?
Come in and select from our
wide range of mountain
hybrid and racing cycles.
Parts and accessories
for all makes.

**Bellarine Peninsula
Cycle Specialists**

- Drysdale
High Street
53 2662
- Ocean Grove
Park Lane
551627



future needs and that it will be a building that the community of Drysdale and Clifton Springs will be justly proud of.

Recently the Brigade held its Bi-annual election of Officers which saw the current Captain, Bernard Filbay, stand down after 14 years at the helm. The new captain will be Des Connor who will take over on 1st July 1996. The new executive will be:-

Des Connor	Captain
Steve Atkinson	1st Lieutenant
David Searle	2nd Lieutenant
Aub Jones	3rd Lieutenant
Chris Mortimer	4th Lieutenant
Daryl King	Secretary
Ralph Leone	Communications Officer

For fire calls the Brigade currently operates under an Emergency Reporting System (ERS)

which 11 Brigade members are linked through the telephone system to intercept fire calls and take appropriate action. Currently the fire call number is 222333 which alerts the Geelong Communications Centre at the Geelong Fire Station, 512745 will alert the Drysdale Brigade direct through the ERS system. By dialing 000 the Brigade will be alerted through the Emergency Services System and Geelong Operations Centre.

It is expected that from 1st September the Brigade will join the BEST-CAD (Bureau of Emergency Services Telecommunications - Computer Aided Dispatch) System currently used by Victoria Police, the Ambulance Service and the State Emergency Service. All fire calls will be made through '000' and most Brigade volunteers will be turned out via Alpha-Numeric Pagers. Further information regarding this move will be made available closer to the proposed changeover date.

AMBULANCE STATION REPORT

It is now eighteen months since the Bellarine Ambulance Station became operational, following tireless effort by this community through the Bellarine Fund Raising Auxiliary to raise the enormous sum of money which they achieved. In excess of \$100,000. The Station itself is the home to not only the local Ambulance but also the State Emergency Service Bellarine Unit.

When the Ambulance Service was planning to place an Ambulance Station on the Peninsula the workload of the area was assessed and it was expected that such a branch would probably be called out to 40 or so jobs per month.

Since opening in October 1995 however, the branch has responded to an average of 100 to 120 calls per month, exceeding all expectations. People have asked me whether I attribute the increased workload to the fact that an Ambulance is now located and more visible on the Peninsula or perhaps people who in the past may have driven themselves to the hospital now use the resource. I can only speculate. I will say however that we respond primarily to emergency calls from Bellarine and that by far the majority of these people should not be travelling any other way than in the back of an ambulance.

"Le Shah Boutique"
Ladies Clothing and Accessories

Special
\$5 OFF ANY JUMPER
on presentation of this Advert"

- Lay-by's Welcome...
- Larger sizes Available...
- New stock arriving weekly...

(Sizes 8 to 24)

15 Hancock St., Drysdale. **Ph: 53 2511**



Rawleigh

PRODUCTS AVAILABLE

Elizabeth & John Tovey
3 Boondi Court, Clifton Springs,
Phone/Fax (052) 51 3474

SINCE 1889

We work very hard to provide a high level of service on your doorstep in the shortest possible time. The sick and injured should not be rushed to hospital in private cars and high stress situations. This not only endangers the patient further but also endangers others. If in doubt call the Ambulance Service on "000", the person answering the phone will be able to help you and dispatch an Ambulance to you if necessary.

As the Advertising says "the Ambulance Service is not a free service" and trips can be expensive so consider subscribing now before you need us. If you receive social security or other benefits check whether they cover your Ambulance transport costs.

The Bellarine Branch provides a 24 hour service, the branch has 5 rostered staff. The Officers work an on call system whereby they take vehicles home each night and respond from their residences during the night.

I have also been asked about the availability of Mobile Intensive Care Ambulance M.I.C.A. in the area and am proud to say that Bellarine has three qualified M.I.C.A. Paramedics with a fourth nearing the completion of his training. This is an outstanding achievement for a rural area and a credit to the staff of the branch, especially when you consider that up to two years ago M.I.C.A. Officers were only trained and employed in metropolitan Melbourne.

In conclusion I would like to thank the Bellarine Community for their on going support and invite people to call into the branch if they have any enquires.

Ian Russel
M.I.C.A. Paramedic
Officer in Charge,
BELLARINE AMBULANCE STATION.

"SPORTSMAN'S NIGHT"

SPECIAL GUESTS

DOUG HAWKINS, MERV HUGHES,
MARK HARVEY.

DRYSDALE FOOTBALL CLUB SOCIAL ROOMS

SATURDAY 15th JUNE, 1996

7:30pm START

\$25 / HEAD - SUPPER PROVIDED
LIMITED TICKETS - ALL WELCOME

CONTACT JEFF STEWART - PH. 512603 BH, 532240 AH.
PETER PREECE - PH. 270347 BH, 513109 AH.

NON-SLIP CAN BE DECORATIVE

Ralph Mogford of "Longford Coatings" Clifton Springs offers a unique surface that not only looks great, but is absolutely safe.

"Longford natural Stonechip Coatings" provides an attractive non-slip surface for around pools, patios and paths and yes even driveways. The technique, developed by Mr. Mogford is a multi-layered resin and stonechip method which can add colour and safety to all concrete areas.

Natural Stone Chip Coating is not associated in any way with the trowel on pebble system of the past which is well known for its abysmal performance.

Mr. Mogford first began using his natural Stonechip Coatings System back in 1982 and has developed it into a trusted and respected coating used in both the domestic and industrial field.

Mr. Mogford has many satisfied customers ranging from house-holders to high traffic ar-

eas such as the Port Kembla R.S.L., Ocean Grove Bowling Club and the walkways onto the "Miranda" Floating Restaurant.

Longford Coatings will also do company logos. The process is decorative without being ostentatious and has been tested by the University of New South Wales as being "totally non-slip" and has been Gazetted by the New South Wales Department of Housing.

Having moved from New South Wales to become a permanent resident of Clifton Springs, Ralph has coated the driveway in front of his residence at 26 Allara Court to enable any one interested an opportunity to view his work.

Call "Longford Coatings" on 019 999 128 for a free quote and further information on this revolutionary and durable Stonechip Coating technique which carries with it a written five year guarantee.

LONGFORD NATURAL STONECHIP COATING

This remarkable coating is

- * Non Slip * Colourfast * Permanent
- * Decorative * Maintenance Free

The coating is NOT pebblemix and is guaranteed for five years. Tested by Unisearch and found to be totally non slip under all conditions it has also been approved by the New South Wales Department of Housing. Applied to the front entrance of Watty Paints in 1982 it is still in near perfect condition. The coating can be viewed at the Ocean Grove Bowling Club or at 26 Allara Court, Clifton Springs. The coating is perfectly suitable for use on the following areas

- * Patios * Steps * Paths
- * Pool Surrounds * Driveways

**For more information and
an Obligation Free Quote contact
Ralph Mogford JP or Robin Long
Telephone 019 999 128.**

**The System carries a
five year written guarantee
and senior citizens discount applies.**



WISE GUYS MENS HAIRSTYLIST "Its the cut that counts"

So come and see
Wendy, Jenny & Kelly
for all mens and boys styling
* STUDENT AND PENSIONER *
DISCOUNTS

No appointment necessary



**Shop 1,
Wyndham Street,
Drysdale.
(Next to
Bakers Delight)**

53 2503

COLLEGE ESTABLISHES LOCAL LINKS

Since opening its doors in February, the Drysdale Campus of Christian College has made a significant impact on the local community. Students attending Christian College Bellarine have been involved in a wide variety of activities and experiences.

Professional tennis coaching has been conducted on the Drysdale Tennis Courts as part of the newly created 'Aspiring Tennis Program' and weekly basketball clinics are lead by members of the Geelong Supercats. The newly established Environment Centre in the former City of Greater Geelong Nursery complex on site at The Bellarine Campus involves the children in the care of small animals and the planting and caring for plants and vegetables. A recycling and composting program encourages the children to consider a variety of ways of preserving our environment.

Contact with members of the local community is a significant aspect of the School program. Students recently welcomed members of the Drysdale Retirement Village at a Music afternoon during Senior Citizens Week, where students displayed skills developed during the comprehensive Instrumental programs, dance and singing. A visit from the State Emergency Service was of great interest to all, as was the opportunity to enter Artwork in the Drysdale Historical Society, Pioneers Day Competition. In the near future, students can now look forward to visiting the Drysdale Historical Museum to learn more about the history of our local area.

An Easter Service conducted in St. James Anglican Church provided staff, students and

families the opportunity to worship with members of the local community and to hear the Bellarine Campus Choir. The College looks forward to future involvement with other local Churches as the year progresses.

Head of Campus, Mr. Glen McKeeman said that he was extremely pleased by the support that the local community had given the College, "everyone, from local tradesmen to interested people visiting to see the former Council Chambers operating as a school, were supportive of our efforts." Already Christian College Bellarine has developed a reputation for its comprehensive academic program conducted by the experienced and talented staff. Learning is effective within the caring, Christian environment where each student is given the opportunity and encouragement to succeed.

Christian College Bellarine is holding an Open Day on Wednesday, 29 May between 10.00am and 3.00pm. Why don't you experience Christian College Bellarine for yourself. For more details telephone 532998, or enquire at the Reception - 40 Collins Street, Drysdale.



RISTEVSKI HORAN

BARRISTERS & SOLICITORS

**Cnr. High St. & Springs Rd.
Drysdale**

**P.O. Box 99
Drysdale 3222**

**Fax: (052) 53 1815
Phone (052) 51 3453**

CARPET STEAM CLEANING

**MARICK CARPET
CLEANING
DICK BOLAND
Ph 59 2217
Mobile (018) 317 065
Carpets, Lounge Suites
Car Upholstery
Stain Guard Available
FREE QUOTES**

BELLARINE AUTO SERVICES

**Quality Mechanical Repairs
Tuning - Servicing
LPG Conversion - EFI
Tyres - Batteries - RWC
Licensed Vehicle Testers**

**Mortimer St. Drysdale
Proprietors:
P. Bruce J. Pamplin
Ph. 53 1644**



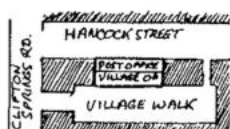
**6 WEEKLYS
FOR \$10**

**1 Overnight and
4 Weeklys for \$10**

30 High Street, Drysdale
Phone: 512486

Uniting Church in Australia
CONCERN

**VILLAGE OP
SHOP**



Village walk Drysdale
Open Monday to Friday
10am 4pm

Donations of goods may be made
at this shop

**Mortimer's
Petrol Station &
Convenience Store**

**97 High St. Drysdale
Ph. 51 2603**

- * Petrol, Autogas
- * Bait and Fishing Supplies

CAR WASH NOW OPEN
Wash \$3.00
Wash and Wax \$4.00 with petrol
OPEN 6.00 AM - 10.00 PM

**BLUEBERRIES
AT
TUCKERBERRY HILL**

35 BECKS ROAD, DRYSDALE

Pick your own - closed
Frozen Blueberries - B.Y.O. Esky
\$8.00 per kilo
\$7.00 per kilo if 10 kilos or more
purchased
\$6.00 per kilo - jam quality
While stocks last
Jam, Chutney, Topping and Receipts
Books for sale

**Ph (052) 51 3468
Fax (052) 53 2591**

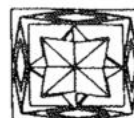
ELECTRICAL CONTRACTOR

**Terence Britt
HOUSE WIRING
SPECIALIST**

**"A" Licenced No. 25316
L.E.C. No. 11088**

**Ph. 51 3727
Mobile 018 521 870**

**Drysdale
Knit & Sew**



**Shop 6,
3 Wyndham St.
DRYSDALE.**

**Patchwork & Quilting
Supplies, Wool,
Haberdashery**

Ph. 51 2116

**PHARMACY
OPEN SUNDAY
9am-noon**

**Weekdays 9am-6pm
Sat 9am-1pm**

**David C. Pinney
Shop 5/3 Wyndham St.
Drysdale**

Ph. 513298

**DRYSDALE COMPUTER
CENTRE**

**For all your Computer
and Software needs**

**Stationery
also
available**

ALL SCHOOL REQUIREMENTS

**SHOP LOCALLY AND
SAVE MONEY AND TIME
Shop 7/3 Wyndham St. Drysdale.
Phone/Fax 531 360**

CMI SUZUKI
OUTBOARDS
Authorised Dealer

- SERVICE AND REPAIRS TO ALL
MAKES OF OUTBOARDS
- SPARE PARTS
- BOATING ACCESSORIES
- TRAILER, REPAIRS AND PARTS
- USED MOTORS
- PROPELLER REPAIRS
- SLIPWAY AND FULL SHIPWRIGHT
FACILITIES
- BOAT SALES AND REPAIRS
- FITTING OUT AND MODIFICATIONS

**Customer Satisfaction
Guaranteed**

CMI
RIPPLESIDE

PH: 722672
LIVERPOOL STREET,
NORTH GEELONG

Fawlty Towers

**HOMEMADE GOURMET FOODS
TAKE-AWAY COFFEE LOUNGE**

Join us in our cosy lounge for the best coffee,
yummy cakes and eats in town Open 7 days a
week, Sat. and Sun. 9 am to 4 pm Orders taken
for special occasions Prop. Trudy McPherson
Shop 6, The Arcade, Drysdale, Ph. 513312

PIONEER FAMILY DAY:

Student competition results. Prizes donated by SpringDale Community Cottage.

SECTION 1 - Pioneer Portrait

1st Prize Simon Dent - Clifton Springs Primary School

2nd Prize Krystle Stevenson - Clifton Springs Primary School

Section 2 - Family Tree

1st Prize Brooke Colenso - St. Leonards

2nd Prize Diana Fuster - Point Lonsdale

3rd Prize Tarlee-Ann Thurman - Clifton Springs

Special Prize: Portrait

Robert Mahar - Bellarine Christian College.

SpringDale Community Cottage and Drysdale Historian Society would like to thank all those

who participated in the Student competition. Congratulations to all who achieved such a high standard of work and very special congratulations to the prize winners.

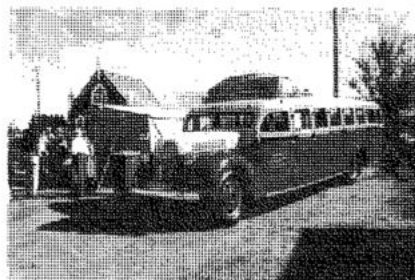
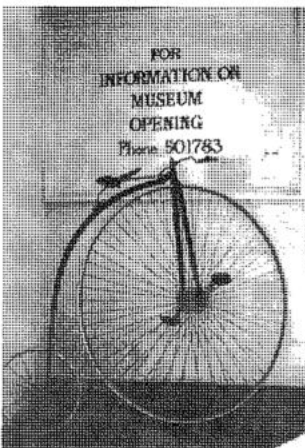
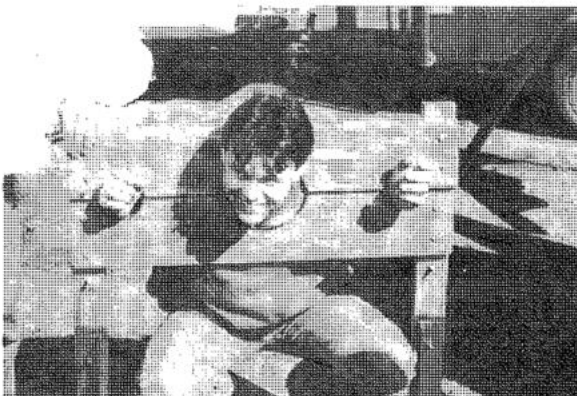
THANK YOU

from the Bellarine Historical Society Inc.

The members of the above Society would like to thank you for the hard work on our behalf for the schools project connected to the Pioneer Family day held on the 20th April. Whilst it was a little disappointing that more schools didn't take the opportunity to participate it was very rewarding to see the high standard of the entries. We congratulate all the winners and thank McDonalds Restaurant, Newcomb for the donation vouchers which every child was able to receive.

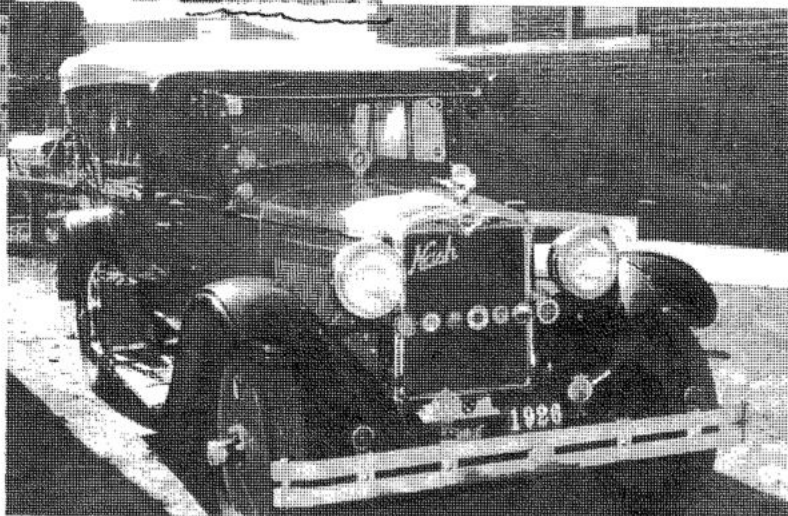
We are very appreciative of all the help that was given by the Community Cottage and the many societies and clubs that took part in the activities on the day.

M. Filbay. President.





NORMA.



Pinky's PIZZA
Ribs on the Run

NEW

DRYSDALE

Shop 3 26 Main Road Drysdale

2 Large Pizzas Pick Up

NEW

\$13.90

Home Delivery

\$15.90

NEW

PHONE

131 481

DEDICATION OF MODEWARRE AVENUE OF HONOUR AND MODEWARRE MEMORIAL HALL W.W.1 MEMORIES REVISITED

On June 1st 1996 the Modewarre Memorial Hall Committee are holding a Dedication ceremony for the Memorial Hall and the Avenue of Honour that lines the western side of Cape Otway Road outside the hall. Surf Coast Mayor, Mr. Noel Bates will give the opening address at the Dedication Service, followed by the keynote speaker Mr. Bruce Ruxton, O.B.E., State President of the Victorian R.S.L.

The trees and the Hall honour soldiers from this district who enlisted during the first of the great wars. It is believed the first trees were planted in 1918. The Avenue was originally planted with elms but there were problems with them so they were replaced in the 1940's with the Golden Cypress we see today. There was one exception to this and that is the particularly large tree toward the Moriac end of the Avenue. That cypress was planted at the same time as the original elms and was dedicated to Albert Jacka, regarded by many as Australia's greatest fighting soldier.

Albert Jacka was born 10 January, 1893 at Modewarre and spent the first five years of his life there before his family moved to Wedderburn. He died just before his fortieth birthday on January 7, 1932. He became a national figure during the war years by winning the first Victoria Cross awarded in the 1914 -

1918 war and he was consistently reported in the press of the day until his active service ended in 1918.

The trees in the Avenue of Honour celebrate the lives of soldiers who enlisted during the war and this will be the theme of the dedication ceremony on June 1st. There will be an open air service (weather permitting), where the haunting sounds of The Last Post and Reveille will stir memories for returned soldiers and their families.

After the service the community will be asked to honour the sacrifices of these soldiers by celebrating the lifestyle we enjoy today. And what better way to celebrate being Australian than with a B.B.Q. tea at the hall followed by a bush dance with the popular band Murphy's Run.

The Hall Committee are writing a booklet of the history of the Modewarre Avenue of Honour and the Memorial Hall. This booklet will be available for purchase at the dedication ceremony and will raise funds for the maintenance of the hall.

Please contact Margaret Anderson 662 058 for further information.

DRYSDALE PHYSIOTHERAPY AND SPORTS INJURY CLINIC



512 958
27-29 High Street
DRYSDALE, 3222.

BELLARINE CHRISTIAN BOOKS and RESOURCES

SHOP 4, VILLAGE WALK,
21 CLIFTON SPRINGS ROAD
DRYSDALE, VIC. 3222

HELEN & BILL BREW
PH: (052) 513 491
FAX: (052) 513 495

DRYSDALE REMOVALS & STORAGE

Local, Country,
N.S.W. & S.A.
PH. (052) 51 3674



DRYSDALE TIMBER - Ultimate Hardware

Timber Specialist
Cut to size
Full range of Hardware
Paint and Garden Supplies

PH. 512852
OPEN 7 DAYS
LOT 1 MURRUDOC RD.
DRYSDALE.

TAX CORNER

Tax Planning before 30 June.

Tax time is fast approaching and it is now a good time to do some tax planning. Remember the saying "it is too late once the horse has bolted". This is true for tax planning as it is generally too late after 30 June to enter into tax planning arrangements or strategies.

Salaries and Wage Earners

If you are a salary and wage earner you may be able to maximise your tax deductions by:

- Ensuring you have kept proper receipts and records to evidence your work expenses.
- Bring forward work expenditure into this tax year and obtain a tax deduction in this tax year rather than defer the expense until after 30 June.
- it may be appropriate to bring forward or defer any sale of assets for Capital Gains Tax purposes.
- Consider tax effective investments which may provide substantial tax savings before 30 June. Ensure that the investment itself is good before assessing the tax benefits.

Business Taxpayers:

Do you know your tax position for this tax year?

If you have not already done so you should prepare interim financial reports to assess your trading to date and make realistic income and expense projections to 30 June. By doing this you are in position to allow your Accountant to consider appropriate tax planning strategies for your business before 30 June.

Some of the areas which may provide tax planning opportunities for your business are:

1. Equipment.

An outright tax deduction is allowed for items costing no more than \$300.

2. Superannuation.

Subject to statutory contribution limits you may be able to maximise superannuation con-

tributions for your staff before 30 June. Please ensure that you meet your Superannuation Guarantee obligations before 30 June to obtain a tax deduction. It may also be appropriate to consider setting up your own self managed superannuation fund.

3. Prepayment of Expenses.

You are legally allowed to pay deductible expenditure in advance for up to 13 months and claim a tax deduction at the time of payment. An example is prepaying 13 months rent in June.

4. Stock.

Consider writing down the value of obsolete stock which you have on hand at 30 June.

5. Consumable Stores.

This includes items used in your business such as supplies, stationery, tools, staff protective clothing etc. Purchase these before 30 June and claim a tax deduction.

6. Bad Debts.

Do you have trade debtors which you are unable to recover? If so, you may be able to claim a tax deduction for the bad debts. You should ensure that the debtors have been previously taken up as income and that you have written off the debts as bad in your books before 30 June.

7. Directors Fees and Bonuses.

Consider declaring Directors Fees before 30 June and claiming a tax deduction even though the fees are not paid until after 30 June. These are some of the areas of tax planning which you should consider before 30 June. You should consult your Accountant or Tax Adviser before entering into any tax planning arrangement or transaction.

We are happy to discuss any of the above mentioned areas with you and invite you to take up an offer for a FREE initial consultation to have a talk to us.

FREE INITIAL CONSULTATION

- ▼ ACCOUNTING & TAXATION SERVICES
- ▼ SMALL BUSINESS CONSULTANTS

FTA

FRANK TIGANI & ASSOCIATES PTY LTD

53 2992

SUITE 5, 6 HIGH ST, DRYSDALE

DRYSDALE VILLAGE PIZZA & PASTA BISTRO

OPEN 7 DAYS

Dine in, Take Away
for Home Delivery



Ph: 51 3937

BELLARINE SECONDARY COLLEGE NEWS

The new Drysdale Campus of Bellarine Secondary College is progressing as planned. The oval has been developed and sown with seed. Concrete slabs have been poured, steel framing will begin to appear mid May and work is proceeding at a steady pace in readiness for the start of the 1997 school year. The first group of students to occupy stage 1 will be Years 9 and 10. The total enrolment for these levels should be around 420 students. Approval of over 3 million dollars has been given for stage 2.

Much work and effort has been done at school level in planning for Drysdale and it is great to see these efforts gradually appearing. Bellarine Secondary College (Ocean Grove Campus) is having tours of the Campus on Thursday May 30th at the following times:-

<u>noon</u>	<u>Morning</u>	<u>After-</u>
	9.15am	1.30pm
	10.00am	2.15pm
	11.00am	
	11.45am	

Please come along and see the students working through their daily program.


An Information Evening will be held on Tuesday June 4th in the Multi Purpose room at the Surfside Centre beginning at 8.00pm. Student displays and a display of Drysdale Campus developments together with general information about the Campus form the focus of the night.

THANK YOU

On Thursday May 30th SpringDale Childrens' Program and SpringDale Bellarina Toy Library held a Children's Party at the Drysdale Hall and SpringDale Cottage. This successful day was proudly sponsored by the following:-

ECHO Newspaper, Newcomb McDonalds, Drysdale Tuckerbag
Drysdale Primary School Line Dancing Squad, Bellarine Photographics

A huge thank you to all who attended, the SpringDale Volunteers, parent helpers and all who contributed their time to this great day.



**The perfect Place
for Light Lunch
or Afternoon Tea.**

23 High St. Drysdale

Phone 53 2269

SPRINGDALE BELLARINE TOY LIBRARY

Trivia Night

When: Saturday, June 15th
Where: Clifton Springs Bowling Club,
Spring St.
Time: 7.30 p.m. - 10.45 p.m.
Aim: Fun and Fundraising for Toy Library
Cost: \$10.00 per head, \$5.00 under 16.

Light supper provided and bar facilities
available.

Bookings essential: Tables of 6-8 persons

Book early to avoid disappointment

Phone:

SpringDale 53 1960 - daytime
Chris: 51 3891 - evenings

SPRINGDALE COMMUNITY COTTAGE

is delighted to invite the community to view their Promotional Video produced here in Drysdale by local residents.

An Open Day will be held for all interested people on Tuesday, June 11.30 a.m. until 2 p.m. Come and have a cup of tea and view our latest production.

All welcome
SpringDale Community Cottage
14-16 Princess Street
Drysdale.
Inquiries: 531 960

NEW

KINDERPLAY

NEW

Our Kinderplay sessions are offering positions to pre-kinder children for Wednesday afternoons 1.00pm to 3.00pm and Thursday mornings 9.30am to 11.30 am.

It is a great time for parents and children to share time together, for both to socialize with others and for children to participate in some fun activities. We have Music Workshops planned for the future and welcome any input to the groups. **COME ALONG**

FOR INFORMATION CALL 531960

DISCOUNT COUPON

MATURE AGED DRIVERS DISCOUNT COUPON

Due to requests from Senior Citizens in Geelong and Colac, the RACV Driving school has developed a special refresher lesson for experienced drivers. Two people can have a drive with an experienced instructor and be able to brush up on current road laws. This is not a test, you will not lose your licence as a result of this lesson. A one hour lesson, with two people together, is normally \$30.00 but with this voucher it is only \$5.00 per person. One person at a time is \$10.00. Telephone the RACV Driving School on 21 4500 or Nelson Driver Tuition on 41 2210.

Sponsored by the Barwon Community Road Safety Council, the RACV and Nelson Driver Tuition.

The instructors include:

Kathy Evans

Kathy is the Senior instructor for the RACV Driving School and one of the most experienced instructors in our region.

Phil Nelson

Phil is also an experienced instructor and has earned the respect of his peers being selected Chairperson of the Geelong Professional Instructors.

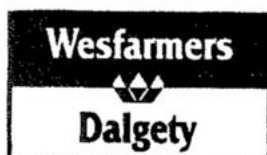
OUR AIM: TO IMPROVE YOUR CONFIDENCE

VOUCHERS ARE AVAILABLE AT POLICE STATIONS

FOR SELLING OR BUYING LAND ON THE BELLARINE PENINSULA

Contact: Stan Lawrence (local resident)
Licensed Estate Agent - REIV Accredited Auctioneer -
30 years rural experience

A/H: 532309 Mobile 018 526836



The Rural District
Property specialists
1 Malop Street,
Geelong.
Phone: 221133

Bellarine Hearing Services

Geraldine McClumpha
B.Sc.Dip.Aud. M.Aud. S.A. (C.C.)

AUDIOLOGIST

- * A.H.S. accredited provider
- * Quality Hearing Aids
- * Professional hearing assessment

157 Myers St. Geelong
Ph. 29 6407
Now at Drysdale
every Tuesday

BELLARINE JONGLEURS

JUNIOR THEATRE COMPANY INC. P.O. BOX 251 DRYSDALE. 3222

NOWHERE BOY
By Jeffrey Leask

ST. JAMES HALL
DRYSDALE 7.30 P.M.

WED. 5TH JUNE
THURS. 6TH JUNE
FRID. 7TH JUNE

Bookings Ph: 531439

All tickets are \$5.00

Nowhere Boy is set in Arabia and revolves around a village of selfish lazy people who do not think of the future. A young boy arrives in their village and things begin to happen. There is a Good and Bad Gang and an extremely lazy Queen who doesn't even walk until the last scene. Some colourful Harem Girls add more to the story line. Why did the boy come? Where did he come from? Find out the answers to these and many more questions. The show is full of songs and dancing and will keep you entertained. This is the Bellarine Jongleurs 8th year and their 15th production.

Lorraine Hall (President/Director)

CLIFTON SPRINGS DELL ADVISORY COMMITTEE

The first meeting of the Clifton Springs Dell Advisory Committee comprising of members from Rotary Club of Drysdale, the local community, Chairman of the Advisory Committee Councillor Dennis Blake and Council officers, held on Thursday, 9th May 1996, discussed future development issues for the Clifton Springs Dell Fore-shore Reserve.

A draft brief was prepared by the committee for a consultant to be engaged to prepare a Landscape Masterplan and Management Plan for the fore-shore reserve from Fairy Dell to Beacon Point.

A number of issues which were discussed by the Advisory Committee to be addressed in the

masterplan included public access, mineral springs historical and cultural links, tourism, carparking, erosion and storm water outlet management, corridors to link with other reserves, interpretive information and a capital works and maintenance implementation program.

Expressions of interest will be called within two weeks for the preparation of a Landscape Masterplan and Management Plan which is expected to be completed within three months from the date of the consultant's engagement.

For further information regarding the above please telephone Mr. Rob Giddings, Environmental Planner on 27 0834.



The Possum's Nest
Quality Out Door Furniture
Wood Heaters
Crafts and Gifts

OPEN 6 DAYS
Adult and Children's craft classes
2 Hancock St. Drysdale
Ph. 532021

CONCEPT CAMPERS
Manufacturers and repairers
of Annexes, Awnings, Tonneaus,
Tarps, Horse Rugs, Boat Covers
Custom Built Camper Trailers
Caravan and Boat Storage
Discount for senior citizens

Phone (052) 532569
61-63 Murrodoc Rd.
Drysdale.



BELLARINE PHOTOGRAPHICS
* 1 HOUR PHOTOS
* FRAMES & ALBUMS
* CAMERAS
* BLOCK MOUNTING

Now In Drysdale Village Shopping Centre
TUCKERRAG
TATTS

Phone 51 3300

 **Kodak EXPRESS**
QUALITY MONITORING SERVICE

Why trust your memories to anyone less.

LEGISLATION PUSHES FOR RESPONSIBLE PET OWNERSHIP



Pet cats throughout the State will require registration as from Wednesday April 10 1996, the day State Legislation comes into force giving legal recognition to domestic cats.

What this all means to cat owners throughout the municipality is that they must now pay a fee for their cat in the same manner as dog registration, and their cats will need to wear an identification tag. Cats will now have the same legal status as dogs and, under legislation, owners will be liable to penalties if their cat is not registered with Council.

Local Laws Community Liaison Officer, Steve Nelson, outlined that this legislation places greater responsibilities and obligations on pet owners as well as giving necessary control to Council over dogs and cats.

"The new Act has been introduced for both conservation and community reasons. It allows greater control over dangerous dogs to ensure a safer community, and it also covers the continued protection of areas of significant conservation value from possible destruction by domestic animals", said Steve.

"When a cat is registered with Council, owners receive a small tag which must be attached to a collar and displayed on the cat when it wanders outside the property. Appropriate col-

lars for cats are the elasticised variety or designs that have a 'pop out' arrangement. Such collars will quickly free a cat if they get into any difficulty.

Council is anxious for local pet owners to totally understand and appreciate the requirements of this new legislation.

"Normally cats will not be restricted to your property. However, where cats are causing nuisance to others, they may be required to be confined to their owners' property, and owners of cats that continually trespass on neighbouring properties may incur penalties", said Steve.

"Generally, this legislation is promoting responsible pet ownership. Animals wearing current identification markers have a far greater chance of being reunited with their owners should they become lost or injured. These regulations also make owners more accountable for the actions of their pets".

Registration forms are available from all Customer Service Centres with costs ranging from a desexed cat \$10 (entire \$40) and a desexed dog \$13 (entire \$54). Supporting sterilisation certificates are required and to qualify for free discounts the Council must be supplied with a current Department of Social Security or Department of Veteran Affairs Pensioner Concession Card. Senior Cards are not valid concession documentation.

Over the coming week all Customer Service Centres will have displays of information related to cats and the new legislation.

For further details contact Steve Neilson, Community Liaison Officer on 270 500 or visit any of the City's Customer Service Centres.

Trinas's Hobby Ceramics
Day & Evening
Classes
Duncan Products
Greenware &
Firing Service



20 Elgin St., Drysdale.
Ph. (052) 513 795

**Wirruna Nursery
& Display Garden**
Open 8.30 - 5.30 every day

Rare plants, perennials & roses
Native & coastal shrubs
Indoor, courtyard & bonzai plants
Garden furniture
Terracotta, pottery & statues
Fountains, pumps & sundials

660 Wallington Rd.
Wallington, Vic. 3221.
Ph. 50 1971

Rosse McConnell

ELECTRICIAN

Domestic, Commercial
& Industrial
Wiring & Maintenance

Phone: 51 3620 Mobile: 018 524 038
NECA REC.5264
4 Bennett St. Drysdale.

NATUROPATHY:

WHAT IS NATUROPATHY?

The term naturopathy was not used until the late 19th century, however the roots can be traced back to Hippocrates. Natural healing, Naturopathy and Natural Therapies seemed to have evolved as a mark of distinction from therapies in which drugs and surgery predominate. It is a system of medicine that is health orientated and stresses maintenance of health and prevention of disease.

Naturopathy focuses on the complete person, that is the person on all levels of existence - physical, emotional, mental and etherical (the vital energy surrounding the body and enervating it). The underlying causes of disease take precedence rather than specific symptoms. Your practitioner, on first visit will compile a complete personal medical history, including details of lifestyle, diet, exercise, e.t.c. A program of treatment will be designed to guide you, the patient, back to a state of balance or wholeness. This can be achieved using any of a number of modalities such as :- Botanic medicine, Homoeopathy, Nutritional counselling, Vitamin/Mineral therapy, Remedial therapies such as massage, soft tissue therapies and manipulation.

In every culture throughout the world there is a wealth of folklore, especially concerning indigenous plants and it is from this wealth that much of our Western technological medicine has its roots. Most of us are familiar with the addictive problems of Valium and Mogadon, yet the plant Valerian from which these were derived, has no such effects but can take the edge off your tension and anxieties. Some other familiar drugs that have plant origins are Aspirin (from Willow Bark), Ephedrine (from the Chinese herb Ephedra), Digoxin/Digitalis (from Foxgloves), and Taxol (from the pacific Yew), just to name a few.

Naturopathy is employed by many people to treat both acute and chronic conditions but its real value is in the prevention of serious health problems. By restoring vitality to the body, building up the natural capacity for health and hence - a real sense of well-being.

LISA TAYLOR N.D.

HERITAGE CONVEYANCING

Your Home - Your Heritage

Professional efficient Conveyancing Service
- Specialising in the Bellarine Peninsula

Phone: Julie Stow

(052) 51 3950

DRYSDALE NATUROPATHIC CENTRE

MRS. LISA TAYLOR N.D.

Naturopathy, Homeopathy, Remedial Therapy and Massage



SUITE 4, 11 CLIFTON SPRINGS ROAD, DRYSDALE

Phone: (052) 53 2510 A/H. (052) 512544

CARMOORA CLINIC

343 Moorabool St. Geelong. Phone: (052) 23 2616

Builder & Carpenter

Michael Kragh

Renovations

Extensions

New Homes



018 108986 or 51 3477



- Monthly reporting
- Invoicing
- Payroll
- Budgeting

Cliff Stride 018 526 187

A.H. (052) 531829

P.O. Box 375 Drysdale.

ROTARY HOEING & GRASS SLASHING

Large & small areas

IF YOU NEED:

A VEGI PATCH
NOXIOUS WEED SPRAYING
A NEW LAWN
GRADING
SCARIFYING
HARROWING
PLOUGHING



**Contact
Frank &
Tegwen Vella**

53 1515 or 018 593 992

BELLARINE AGLOW FELLOWSHIP

Aglow Fellowship is an interdenominational, worldwide Christian organisation for women.

Monthly meetings are held at which women can come together from all churches, all walks of life, and who represent all age-groups and all cultural backgrounds. They can enjoy making friends across these "barriers" and share together the love which God has for each one of us.

The Ministry given at each meeting is usually presented by a woman speaker. All ministry in Aglow is Bible based. We believe it is God's word.

Bellarine Aglow meets on the 1st Thursday of each month at "Angels on High", High Street, Drysdale, commencing with Morning Tea at 10am. A creche is available. For more information, contact DIANNE on 512218 or EUNICE ON 532411.

Mary's Beauty Spot

1 High Street, Drysdale
Telephone: 53 2330

"THE MEN'S CUTTING ROOM"
All mens cuts only \$10

LADIES HAIRDRESSING
Perms only \$40 receive FREE treatment

'ACRYLIC NAILS'
\$40 FULL SET
WAXING

Full legs \$25.00 1/2 Legs \$15.00
All waxing available

"FACIALS AND MAKE OVERS"
FREE: Lash Tint with facial

Gift Vouchers Available
Customer Parking
CRECHE

MARY - TRACE - WILMA -
LEE - LYNNE



8.75%

**Interest Paid Half Yearly
Government Guaranteed**

NEW PENSION DEEMING RULES SOLVED

AUSTRALIAN
PENSIONER
ADVISORY
SERVICES



**Licensed
Investment Advisors**

1800 065 075

152 LITTLE MALOP STREET, GEELONG

Australian Pensioner Advisory Services Pty Ltd (ACN 001 427 574) is holder of Dealers License No. B0176

Kings

FUNERAL SERVICES

25 Myers Street, Geelong
Phone 22 3688, 21 5760

Serving the families of
Geelong and the
Bellarine Peninsula
with understanding
and care

Alinga Nursery

Pty Ltd

Cnr Jetty Rd & Railway Cres

Drysdale

Large range of outdoor
Plants, natives, trees,
shurbs, ground covers,
ornamental trees.



**Kerrie & Neil
Muhlhan**
OPEN 7 DAYS

Ph 53 1299

The Lifeline Shop

Unit 1, 19 Murrodoc Rd.
Drysdale
Phone 53 2168

Bargain Clothing
Furniture, Clothing, Brick-a-Brac
Gratefully accepted
Profits from our shops
help fund Lifeline's 24 hr.
Telephone Counselling Service.

Community Notices

WOMEN UNITED

are starting a craft group called "EAGER HANDS".

This is a Clifton Springs Baptist Church Community Service.

Meetings will be held the 1st Monday of each month

7.30p.m. - 9.30p.m.

at 7 Dederang Drive, Clifton Springs.

There will be a small cost to cover kits. Need only to bring scissors. Supper provided.

Open to all ladies in the community.

For information phone: Glenys 513 185, Pam 501 709, Merryn 503 905

DRYSDALE C.W.A.

Our Devonshire Tea's at The Pioneer family Day proved a huge success, thank you for your help. The Fashion Parade for Camp Quality enabled us to send \$1000.00 to help their work with young cancer patients. Next on the list is "The Biggest Coffee Morning" for Breast Cancer Research on Thursday 6th June. We will

be in the Drysdale Village Shopping Complex with home made biscuits, tea and coffee. Come and see us please and make a donation for this worthwhile work.


Don't forget, we love new members and friends.

A NOTE FOR COLLECTORS!

Bellarine Historical Society now has collector's items available, featuring the Historic 1880 Court House - Spoons, Badges and Pins, all \$4.00 each. Opening times from 2nd June to November will be 1st Sunday of each month, 1.30 to 4.30 p.m. when the Society's records will be available for research. Regular monthly meetings are held on 2nd Wednesday each month, 7.30 p.m. with Guest Speakers and Supper. New members welcome.

CLIFTON SPRINGS GARDEN CLUB

The Clifton Springs Garden Club meets at 7.30 p.m. on the 3rd Monday of each month at the Uniting Church Hall, Drysdale. New members welcome.



18-20 HIGH ST. DRYSDALE.

OPEN:
7 Days - 10am to 5pm
Tuesdays 11am to 2pm

New Members always Welcome

Salvation Army Family Stores

Mortimer St.

Drysdale

Ph. 51 2475

**Plenty of Bargains
The Place to Shop**

Come and see us

We are here to Help You




Drysdale Village Drycleaners

**Shop 2,
21 Clifton Springs Road
Drysdale**

TRADING HOURS

**Mon - Fri 7.30 am - 5.30 pm
Saturday 9.00 am - 12.00 noon**

Phone 51 3990



BELLARINE
VETERINARY PRACTICE
7 PALMERSTON ST. DRYSDALE

**Mon, Wed & Fri 10.00am - 11.30am
2.00pm - 3.00pm**

**Tues & Thurs 10.00am - 11.30am
5.30pm - 6.30pm**

Saturday 8.30am - 10am

**Office only (No Vet)
Mon, Wed & Fri 11.30 am - 12.30 pm**

Please Phone: 53 1393

**Calls outside these hours will be
diverted to our Newcomb Hospital**

Geelong & Bellarine Podiatry Centre

PAUL GRAHAM

B.App.Sc.(Pod.) M.A.Pod.A.

KARMEN KRASIC

B.App.Podiatry. M.A.Pod.A.

- Diabetes Management and care
- Ingrowing or damaged toenails
- Lower limb, ankle & foot aches and pains
- Prescription & made to measure footwear

GEELOG
209 Malop St.
Ph. 23 1531
MON - THURS.



DRYSDALE
27-29 High St.
Ph. 51 2958
FRIDAY ONLY



*Phil
Hodgkinson
AH 55 1043
019 679 426*



*Brett
Thompson
AH 53 2364
018 520 354*



*Phil
Cumming
AH 51 3047
018 599 232*

EXTENDING THE HOME

Question: WE ARE UNDECIDED WHETHER TO SELL OR TO EXTEND OUR CURRENT HOME. WE ARE PARTICULARLY CONCERNED THAT WE MIGHT OVERCAPITALISE.

CAN YOU PLEASE ADVISE US OF OUR BEST COURSE OF ACTION?

Answer: Yours is not an uncommon problem and many families are facing the same dilemma.

The fear of overcapitalising on your current home can be a major concern. We have all seen some fine examples of successful extensions but in the "wrong area" and conversely there are equally as many poorly designed additions that have no aesthetic or practical relationship to the original home. However, there are some houses that can be greatly enhanced in value by even a small extension.

Be careful not to "cut corners" on the cost of the extension. You don't want the cheap modifications to come back to haunt you and consequently reduce your price.

However, I feel that each case should be taken on its individual merits. For instance building a small extension might only be deferring the problem for a year or two and you may have to move anyway.

We come across your dilemma quite often and we would be happy to inspect your home and give you first hand ideas on whether to sell or extend.

If we can be of any further assistance, please feel free to contact us on 512847.

**Guyet Real
Estate P/L**

Phone: 51 2847

11 Clifton Springs Road, Drysdale

Together we'll make it happen