

The SpringDale Messenger

Your Free
Community
Newspaper

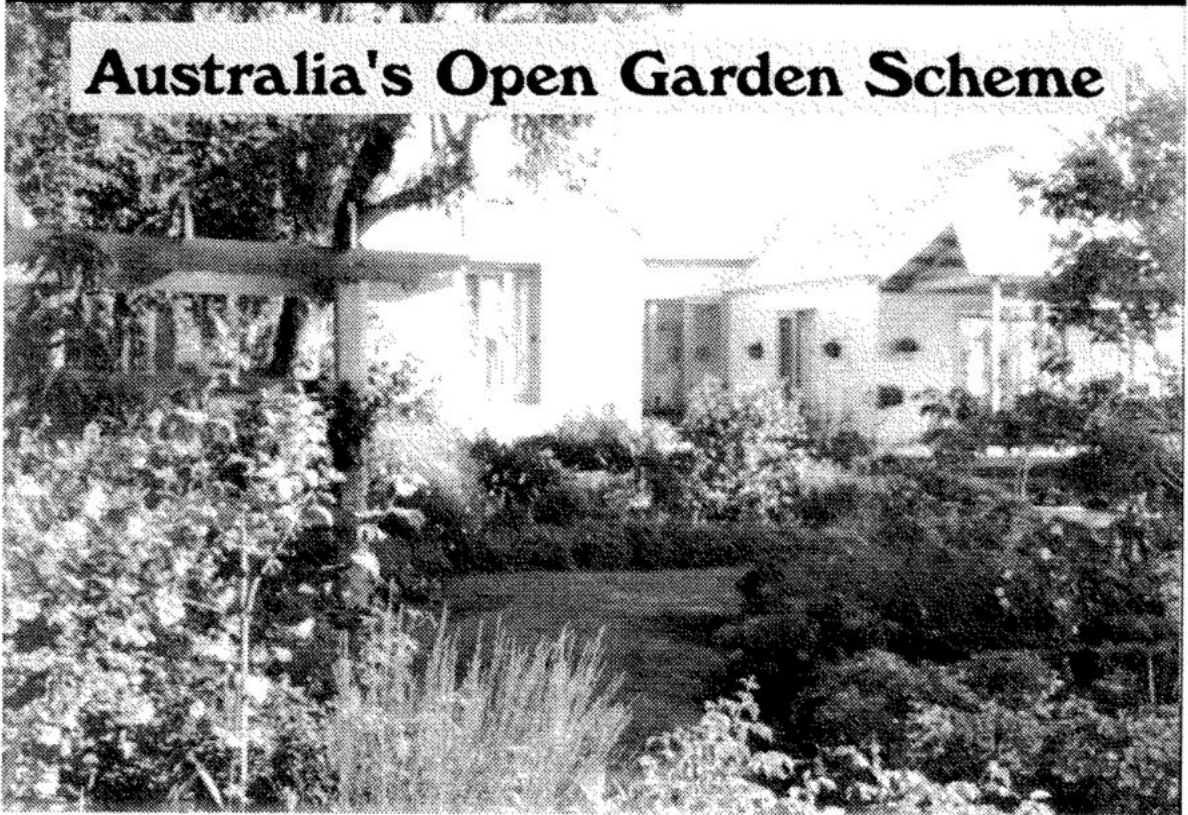
Compiled and published by the SpringDale Community Cottage Inc

Circulation 3,700

Vol 6 No.8, November 1996

Local Gardens in

Australia's Open Garden Scheme

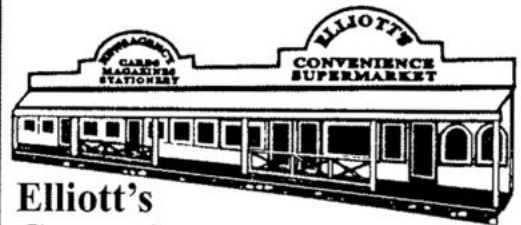


THRIFTY-LINK
HARDWARE

YOUR HANDY
HARDWARE
STORE

**DRYSDALE
VILLAGE
HARDWARE**
(052) 51 3267

THE ARCADE
HIGH STREET
DRYSDALE, 3222.



**Elliott's
Convenience
Supermarket & Newsagency**

**12 High St. Drysdale
Ph 512401/512776**

The SpringDale Messenger

The SpringDale Messenger is compiled by the SpringDale Community Cottage, 14 Princess St. Drysdale. Postal: P.O. Box 80, Drysdale, 3222.

Advertising and Enquiries: 53 1960.

Community Groups, Churches, Sporting Clubs, Service Clubs, etc., are invited to submit details of their future activities for regular inclusion in the Community Diary section, or as articles in the news section as appropriate.

Copy may be typed or printed with a good ribbon (preferred), or legibly handwritten and left at the SpringDale office at 14 Princess St., or posted to P.O. Box 80, Drysdale, 3222.

Next Publication:

Copy deadline: 25th November, 1996.

Distribution: 13th December, 1996.

Views expressed in this newsletter are not necessarily the views of the Publisher, the SpringDale Community Cottage.

ADVERTISING AND ARTICLES:

Maureen Naughton,
SpringDale Community Cottage,
Phone (052) 53 1960.

To ensure publication in a specific issue, copy must be submitted prior to deadline.

Layout and Design of this issue by
Pagination Design Services, Geelong.
Ph: (052) 23 2494



BELLARINE FOOT CLINIC

**Paul B. Shannon,
Lyndal McGuire,
James Gerrard
PODIATRIST'S
100 The Terrace
Ocean Grove, 3226.
39 Fenwick St.
Portarlington, 3223
64 Bellarine Highway
Newcomb 3219
Ph: 22 4147**

Contents

| | |
|--|----|
| Local Gardens in | 1 |
| Australia's Open Garden Scheme | 1 |
| The SpringDale Messenger | 2 |
| Local Gardens in Australia | |
| Open Garden Scheme | 3 |
| A GARDEN OF LOVE OR | 4 |
| THE LOVE OF GARDENING, VEIWS END | 4 |
| STONEACRES FARM | 5 |
| LANHYDROCK | 6 |
| ALINGA NURSERY | 8 |
| CLIFTON SPRINGS GARDEN CLUB | 9 |
| IN YOUR GARDEN | 10 |
| ASTHMA | 11 |
| CORYULE WARD - CR DENNIS BLAKE | 12 |
| RECOGNITION FOR QUIET | 13 |
| COMMUNITY WORKER | 13 |
| NORTH BELLARINE HOSTEL FOR THE AGED INC. | 14 |
| VARIETY REVIEW CONCERT | 15 |
| CLIFTON SPRINGS | 17 |
| DRAINAGE SCHEME COMMITTEE | 17 |
| ARE YOU INTERESTED? | 18 |
| LEGAL REQUIREMENTS BEFORE YOU CAN SELL YOUR HOME | 19 |
| DRYSDALE C.W.A. | 20 |
| VIDEO CLASSES | 20 |
| PENINSULA PLAYERS | 21 |
| BONE DENSITY TESTING OSTEOPOROSIS | 21 |
| BELLARINE SECONDARY COLLEGE | 22 |
| KINDERPLAY | 23 |
| CHILDREN'S ACTIVITY SESSIONS | 23 |
| DRYSDALE SCOUTS FUNDRAISER | 24 |
| HARMONY 2 - 1996 | 24 |
| SPRINGDALE \$2 + | 24 |
| DRYSDALE HEALTH CENTRE AUXILIARY | 25 |
| VOLUNTEERS DESPERATELY NEEDED | 25 |
| SPRINGDALE BELLARIN TOY LIBRARY | 25 |
| NORTH BELLARINE COMBINEDCHURCHES | 26 |
| DRYSDALE SENIOR CITIZENS CLUB | 26 |
| BOWLS | 26 |
| BELLARINE PENINSULA COMMUNITY HEALTH SERVICE INC. | 27 |
| POPPY DAY | 27 |
| Guyett Real Estate P/L | 28 |

Local Gardens in Australia Open Garden Scheme

Three LOCAL GARDENS will be open to the public through the Australian Open Garden Scheme on the following days:

Saturday the 2nd November

10.00am - 4.30pm

Sunday the 3rd November

10.00am - 4.30pm

Please come and visit.

Views End and Stoneacre Farm in Scotchmans Road, Drysdale and Lanhydrock at 30 Elocourt Wallington. Off Swan Bay Road.

AUSTRALIA'S OPEN GARDEN SCHEME

Australia's Open Garden Scheme originated in Victoria in 1987 when ABC Radio and the Royal Horticultural Society of Victoria came together to promote a worthwhile community project for bringing gardeners together. Since that first season, when just 63 gardens were opened in one state, the Scheme has expanded right across Australia, and around 200,000 visitors pass through our gates each year.

The support of ABC Radio has been a major ingredient in the success of the Scheme and details of garden openings can be heard on ABC metropolitan and regional stations throughout Australia. At the beginning of each district in the guidebook, ABC Radio introductions detail the extensive coverage given to

gardening by each station as well as other useful program information.

The Scheme's expansion was funded in two ways. Firstly, a grant was provided by the Australian Horticultural Corporation representing the nursery industry. In addition to this, the Scheme has contributed substantially from its own annual surpluses.

Our chief aim is the promotion of gardening as a pastime and the enrichment of gardening knowledge in all its aspects. This is achieved with the co-operation of garden owners who are invited to open their gardens to the public on one or more days during the season so that gardeners of all levels of experience may observe at first hand the achievements of other gardeners and communicate directly with them.

Gardens are chosen by selection panels in each region, using several criteria which include: design strength and quality, significant plant material, historical significance, and a reasonable standard of maintenance.

The Scheme embraces gardens from a broad range of communities and districts. The nature, philosophy and style that goes into the making of these gardens will vary accordingly. The gardens selected reflect the diversity and cultural expression of Australians.

**DRYSDALE TIMBER**—
Ultimate Hardware
Timber Specialist
Cut to size
Full range of Hardware
Paint and Garden Supplies

PH. 512852
OPEN 7 DAYS
LOT 1 MURRUDOC RD.
DRYSDALE.

**NEO! LIFE**
Australia's Health Company
**Natural/Organic
Nutritional
Supplements**

- Food Source Vitamins**
- Organic Minerals**
- Sports Programs for Athletes**
- Weight Control Programs**
- Water Filters & Air Filters**
- Natural Vit E Skin Care Programs**
- 100% Money Back Guarantee**

Ring for free brochure on all our products.
Gary & Dawn Caldwell - Ph: 532049

A GARDEN OF LOVE OR THE LOVE OF GARDENING, VEIWS END

It was my love of flowers (having been a florist for many years) which drew me to gardening. This much loved past time seems to engulf so many of our lives. Gardening for me began more seriously three years ago.

We purchased the block in 1991. There were lots of gum trees, a large planting of lemon trees and among all of this chaos were the few trees which we carefully selected to form the backbone of the garden.

Before any planting began we needed to improve the rich black clay soil, once this was achieved I began to start my design and planting schemes. I have used the natural flow of the house to dictate the direction of the garden. Our children also had a large influence in this, as they liked to kick balls and play close to the house.

The split terraced area was a starting point, this has led to a definite theme in the garden. With so many views to consider it has led to a garden that I felt needed to be free flowing. Although such beautiful views are inspiring, they also make it very difficult to work with, so I am forced to compete. This is why in open areas I have tried to keep the eye close to the planting schemes by making them as interesting as possible. There are beds which I have

tried to carry one particular colour continuously through the seasons and others where I am blending harmonious colours together. In some areas the light is very intense so I have used much stronger colours.

As the years pass I am continually learning and changing. Moving and adding new plants to achieve a picture in my mind. My love for enclosed or walled gardens forced me to make the best of the area behind the garage. Morning tea was always enjoyed here and a late afternoon rest, sitting to enjoy the framed view of Melbourne, floating on a sparkling bay. Though this is a tranquil spot well sheltered I liked the idea of a strong colour theme and especially loved the rose Altissimo, used as the backdrop.

The necessary vegetable garden, which we have had a lot of productivity from will soon become a Clematis display garden. I am hoping to have this completed by late November, from which time the garden and nursery will be open to the public. My aim is to specialize in Clematis, Hydrangea, Topiary, Primulas and specialty bulbs.

I do hope you enjoy our garden and are able to return later to see our progress with the new additions.

Sharronne Ashbridge

STONEACRES FARM

**330 Scotchmans Rd
Drysdale**

**Garden, Nursery, Cafe
Specialists in**

**Old Fashioned Roses, Perennials
Rare Plants**

**Cafe Open: Morning & Afternoon
Teas**

**Cappucino and Lunch
Friday, Sat. and Sunday**

**10 am - 5 pm or by appointment
Phone: 59 3109**

NOW OPEN

DRYSDALE

BUGGLELUGS



**Quality Recycled & New Stuff
for**

Babies, Kids & Mums to be.

Shop 3/21 Drysdale Village Walk

Clifton Springs Rd. Drysdale.

HOURS - 10am To 5pm Mon - Fri

10am To 1pm Sat

WANTED - Quality goods to be sold on consignment.

Earn cash for your used children's items.

Ph: 53 2021

"STONEACRES FARM"

"Stoneacres Farm" is high on the Bellarine Peninsula with panoramic views over Port Phillip Bay from Melbourne to the Heads. There was no garden when the property was bought by David and Pam Thomas in 1983. It was used as a holiday retreat by the family, the garden beginning in a paddock in 1987 with the orchard planting.

Today, the 3 acres of garden designed by Pam, a graduate in horticulture from Burnley, consist of a large orchard/rose garden underplanted with a rich variety of perennials with 100's of old fashioned roses festooned on chains, covering fences; a wild garden with many varieties of Crabapples and Hawthorns; a recently planted formal citrus garden, and other areas of garden interest with many unusual plants.

The nursery, opened in 1994, specializes in old-fashioned roses, perennials and unusual plants, many of which may be seen growing in the garden.

The most exciting development in recent times has been the opening of a Cafe, an attractive corrugated iron and glass building with splendid views over farmland to the Mornington Peninsula. The Cafe and Nursery are open 10am - 5pm Fridays, Saturdays and Sundays, or by appointment, and every day in January. 330 Scotchmans Road, Drysdale, telephone 59 3109.

"Stoneacres" will be open November 2 and 3 for "Australia's Open Garden Scheme" and November 9 and 10 as part of the "Historic and Country Gardens of the Geelong Region" open days.



Hepner
Funeral Services

Funeral planning makes good sense.

130 Bellarine Highway, Newcomb.
Phone 481919 all hours.



BELLARINE
VIDEO

6 WEEKLYS
FOR \$10

1 Overnight and
4 Weeklys for \$10


30 High Street, Drysdale
Phone: 512486

PHONE: (052) 501 762

Ivana De Simone
Certified Clinical Masseur B.C.T.M.

THERAPEUTIC — RELAXATION
and SPORTS MASSAGE

Leopold By Appointment



COMPUTERS & STATIONERY

•PRINTERS•MODEMS•SOFTWARE•
•HARDWARE•OFFICE & SCHOOL SUPPLIES•

DRYSDALE COMPUTER CENTRE
Shop 7/3 Wyndham Street, Drysdale Ph: 532 311 or 531 388

"LANHYDROCK"

"Lanhydrock" in Wallington is a garden which has developed over the past eight years from a virtually bare five acre paddock into a delightful garden full of colour and interest all year round.

A curved driveway lined with Prunus Elvins leads to the house which is surrounded by a number of garden "rooms" planted with many different perennials, roses, crab apples and bulbs. Wisteria, ornamental grape vines and roses cover the pergola at the front while a westringia hedge at the back encloses a bed of hellebores, roses, grey leafed plants and ground covers.

Flowering cherries, crab apples and deciduous trees such as claret ashes, pin oaks and silver birches combine with intensively planted gar-


den beds which lead down to a small vineyard and fruit trees. Over 300 roses are planted throughout the garden - as hedges, over archways, climbing fences and planted alongside perennials and shrubs throughout the various beds.

It is a bird's paradise - the owners never tire of watching the Blue Wrens, New Holland Honeyeaters and Spotted Turtledoves busying themselves, while various water birds take refuge on the dam which is partially covered with water-lilies and full of frogs.

"Lanhydrock" is at 30 Eloca Court, Wallington (off Swan Bay Road) and is open on 2-3 November from 10.00am to 4.30pm under the Australian Open Garden Scheme.

Some old philosopher, years ago,
I'm not quite sure which one,
Wrote this very famous proverb,
About the way to get things done.
Keep your eye on the ball, was the first line,
And your shoulder to the wheel.
Your nose to the grindstone, and your ear to the ground,
Were also part of the deal.
Put your best foot forward, was the last line,
He threw that in for free,
And if he could write in that position,
He's a better man than me.

Kevin Magher.



18-20 HIGH ST. DRYSDALE.

OPEN:
7 Days - 10am to 5pm
Tuesdays 11am to 2pm

New Members always Welcome

**CARPET
STEAM
CLEANING**

MARICK CARPET
CLEANING
DICK BOLAND
Ph 59 2217
Mobile (018) 317 065
Carpets, Lounge Suites
Car Upholstery
Stain Guard Available
FREE QUOTES



• **HUGE RANGE -**
New & Used Bikes!
• **EXPERT REPAIRS TO ALL BIKES!**
• **ALL PARTS & ACCESSORIES!**
• **PRICE MATCH GUARANTEE!**

• **Ocean Grove 551627**
• **Drysdale 532662**



ANNUAL CRAFT EXPO

**DRYSDALE COMMUNITY HALL
THURSDAY, 14th NOVEMBER, 1996**

10.30 a.m. - 2.30 p.m.

\$2 Entry

**DEMONSTRATIONS, SALES,
EXHIBITIONS & RAFFLES**

Shop Early for Christmas

BASKET LUNCH AVAILABLE \$4.00

(Proceeds to C.W.A. Special Projects)

Presented by:

**SpringDale Community Cottage, Drysdale C.W.A.
and Drysdale Community Crafts**

For information and bookings (catering purposes)

Phone SpringDale 53 1960

ALINGA NURSERY

Just nine years ago Kerrie and Neil Muhlhan purchased a horse paddock on the corner of Jetty Rd and Railway Crescent. The grass was knee high and the block did not have a single tree on it. The transformation of the block into an oasis of trees not only to attract the birds but to provide a windbreak for the nursery has been a slow process but the fruits are starting to show. There are a number of native birds that live permanently in and around the nursery, despite that fact that Clyde, the three legged cat wanders to and fro. The nursery has grown from the early windswept days to a lovely sheltered spot with plenty of shade on the occasional hot day. The Western Red Cedar shop carries a picture board of the progress of the nursery and it has come a long way.

The nursery has a very wide range of plants at very reasonable prices. There are Grevilleas, Bottlebrush, Lavenders, Viburnums, Water Lillies, Pittospermums, Ground Covers, Climbers, Gums, Wattles, Maples, Ashs, Elms,

Silver Birch, Flowering Trees, Fruit Trees and heaps more. The selection of roses available is quite good with bare rooted roses available in Winter. Bush, Miniature, Climbing, Old Fashioned, David Austin, Standard, Miniature Standard, Weeping Standard Roses are all available quite often in flower. The fernery houses a large selection of Azaleas, Camellias, Rhododendrons, Gardenias, Ferns, Tree Ferns and unfortunately Mosquitoes. The seedling bench is well stocked with annuals suited for the time of year.

From Jetty Rd you can't really see what is inside so you will have to come in for a peek. There is a car park on the property and depending on the number of cars in it there is room to drive in with a trailer if you are after Pea Straw or something heavy. There is plenty of things to come and see, especially this time of the year, so pop in and have a look, it costs nothing to have a browse and check out the local nursery.

SPRING DELIGHTS

I feel the stirring all around,
The warmth seeping through the ground.

My body trembles with changes appearing,
Reaching the top, the sun is searing

Stretching, unfolding delicate fingers,
Floating in the air, my perfume lingers.

Gently sashaying in the breeze,
My beauty is there to tease.

For you to reach and touch at will,
I am a beautiful Daffodil..!

Lorraine Barrett 1996

Alinga Nursery
Pty Ltd
Cnr Jetty Rd & Railway Cres
Drysdale
Large range of outdoor
Plants, natives, trees,
shrubs, ground covers,
ornamental trees.



Kerrie & Neil
Muhlhan
OPEN 7 DAYS
Ph 53 1299

BASIC
BOOK-KEEPING



- Monthly reporting
- Invoicing
- Payroll
- Budgeting

Cliff Stride 018 526 187
A.H. (052) 531829
P.O. Box 375 Drysdale.

Mortimer's
Petrol Station &
Convenience Store

97 High St. Drysdale
Ph. 51 2603

- * Petrol, Autogas
- * Bait and Fishing Supplies

CAR WASH NOW OPEN
Wash \$3.00
Wash and Wax \$4.00 with petrol
OPEN 6.00 AM - 10.00 PM

CLIFTON SPRINGS GARDEN CLUB

The Clifton Springs Garden Club meets at The Uniting Church Hall, Drysdale, at 7.30 pm on the 3rd Monday of each month. Most meetings have an interesting guest speaker, followed by supper. New members and visitors are most welcome.

Club activities include bus trips and visits to gardens and points of interest and a monthly show bench on meeting nights with points awarded towards an annual trophy.

The main event for the year is The Annual Garden Show in early November (16th November this year). Entries are open to all, with schedules available from club members and can be picked up from local nurseries and a number of traders in Drysdale, - or ring 50 1624, 53 2039 or 51 2693 for details.

The show is assisted by generous sponsorship from local industries and traders and successful shows have enabled The Garden Club to assist Cottage By The Sea, S.E.S., Bellarine Peninsula Ambulance, Drysdale Community Health Centre and Ann Nichol House at Portarlington in recent years.

The Club looks forward to good support with entries to make a successful show again this year.

A new segment will be the inclusion of a Children's Colouring Competition with participation from Drysdale Primary School, Clifton Springs Primary School and Christian College.

CLIFTON SPRINGS GARDEN CLUB INC.

13TH ANNUAL SPRING GARDEN SHOW

Saturday 16th November 1996
Drysdale Uniting Church Hall
Open 11 am to 4.30 pm

Plant and Cake Stalls

Admission (includes light refreshments)
Adults - \$2.50
Children (6-16 years of age) - \$1.50
Pre-School Children - Free

Regulations

1. Entries for all sections close:
Thursday 14th November 1996 at 7.30pm.
2. All entries to be placed on exhibit between:
6.00 pm-8.00 pm Friday evening
6.45 am-8.45 am (at the latest) on Show Day.
3. **NO LATE ENTRIES ACCEPTED.**



**The perfect Place
for Light Lunch
or Afternoon Tea.**

23 High St. Drysdale
Phone 53 2269

Chui Yuan 酒翠家園
Chinese Restaurant
(B.Y.O.)

**TAKE AWAY & HOME DELIVERY
FUNCTIONS & GROUP BOOKINGS
A SPECIALTY
QUALITY & CLEANLINESS ARE
PARAMOUNT
REASONABLE PRICES
* \$5.00 LUNCH SENSATION MENU**

Ph. 53 1788
Shop 2, 26-28 High St. Drysdale, 3222.

BLUEBERRIES
AT
TUCKERBERRY HILL
35 BECKS ROAD, DRYSDALE

Pick-your-own - closed
"Please phone before
visiting to purchase"
Frozen Blueberries - B.Y.O. Esky
\$8.00 per kilo
\$7.00 per kilo if 10 kilos or
more purchased
\$6.00 per kilo - jam quality
While stocks last
Jam, Chutney, Topping and
Recipe Books for sale

Ph (052) 51 3468
Fax (052) 53 2591

IN YOUR GARDEN

It looks like Spring has finally got going, even if it appears to have been a month or so late. The abundance of rain over Winter and early Spring has meant that everything has been well and truly primed ready for the warm weather, myself included. Tender new growing shoots are a very tasty treat for just about every garden bug you can think of, so keep your eyes peeled for plants that are staying the same size when they looked like they were going to grow. Aphids are probably the most common sap sucking nasties and will generally live in a clump along the new growth stems. Nature will eventually balance and the lady birds and hoverflies will get them, but if you are impatient then, garlic, pyrethrum, soapy water will upset them without killing the good guys.

Now that the fragrant boronias have finished flowering it is time to give them a haircut. Trim about a third off the top depending on how

naked the bush will look once its been chopped. Brown, yellow and red boronia need to be trimmed otherwise they tend to grow long and scraggly. If you have been taking stems for cut flowers during flowering then only a tidy up trim will be required. A trim now will result in a more compact even growing plant with more flower stems next year.

With spring in full swing annuals like Petunias, Marigolds, Portulaca, Dianthus, Ageratum, Asters, Cosmos can be planted out and will grow very quickly and provide a good color show through the summer months. For the cooler spot the old favourite Impatiens will certainly provide a very long show of color to brighten up any garden.

Neil Muhlhan
Alinga Nursery

MARY'S BEAUTY SPOT

1 HIGH STREET
(Old National Bank Building)
DRYSDALE

Phone: 53 2330

**Professional,
Affordable,
Hairdressing for
all the Family**

HAIRDRESSING for all the family

ACRYLIC NAILS

WAXING

FACIALS

LASH & BROW TINTING

BRIDAL & DEBUTANTE HAIR STYLING

MAKE OVERS

CUSTOMER PARKING, CRECHE

Call in and see

MARY - LEE - WILMA - MICHELLE



**Earn
up to**

7.60%

Government Guaranteed - Interest Half Yearly

NEW PENSION DEEMING RULES SOLVED



Licensed Investment Advisors

Call now for a current prospectus and our No.5 Newsletter

1800 065 075

152 LITTLE MALOP STREET, GEELONG

Applications may only proceed on the relevant form provided in the current prospectus.
Australian Pensioner Advisory Services Pty Ltd (A.C.N. 007 417 974) is holder of Dealers License No. 00176

ASTHMA

Asthma is one of the commonest causes of hospitalisation, and appears to be on the increase. It is principally an inflammatory reaction involving the airways. They become irritated and swollen and sometimes there is an increase in mucus production. The next result is BRONCOCONSTRICTION, a narrowing of the airways, this is reversible airways obstruction or ASTHMA.

Generally a trigger factor precipitates an asthma attack. These trigger factors may include dust mites, grass or flower pollens, animal fur, exercise, smoke (direct or side), some food additives, emotional stress or chest infections.

Symptoms of asthma may not be present all the time, and one or more of the following may be present.

- Cough - especially at night
- Wheezing - noisy breathing
- Tightness in the chest
- Shortness of breath.

Asthma Management is best achieved with a systematic approach.

- 1) Determine the severity of your asthma with your Doctor.
- 2) Ensure your airways are at their best and use a peak flow meter and chart results to determine your best value.
- 3) Determine your trigger factors.

- 4) Check with your Doctor or Pharmacist which medicines will help your airways and which won't. Know the difference between Reliever and Preventer medication and when and how they are to be used.
- 5) Work out an Action Plan with your Doctor so you know when your asthma is getting worse and what medication to use and when to seek medical help.
- 6) Have regular checks with your Doctor and discuss any problems you may have managing your asthma at this time.

Remember if you have reliever and preventer medication to allow your reliever medication time to open the airways - about 10 minutes then to use the preventer medication. The preventer is used regularly.

If you feel you should be benefiting more from your puffer it could be your technique, check with your Doctor or Pharmacist and inquire about a spacer device which can prove invaluable.

Asthma can interfere with life-style if left inadequately treated, however with current medication techniques, sufferers can lead a normal life.

Don't hesitate to call at our pharmacy Shop 5/3 Wyndham St. (Opposite Tuckerbag) to discuss any problems.

David Pinney
Pharmacist

Trinas's Hobby Ceramics
Day & Evening
Classes
Duncan Products
Greenware &
Firing Service



20 Elgin St., Drysdale.
Ph. (052) 513 795

**Wirruna Nursery
& Display Garden**
Open 8.30 - 5.30 every day

Rare plants, perennials & roses
Native & coastal shrubs
Indoor, courtyard & bonsai plants
Garden furniture
Terracotta, pottery & statues
Fountains, pumps & sundials

660 Wallington Rd.
Wallington, Vic. 3221.
Ph. 50 1971

PHARMACY
OPEN SUNDAY
9am-noon

Weekdays 9am-6pm
Sat 9am-1pm
David C. Pinney
Shop 5/3 Wyndham St.
Drysdale
Ph. 513298

CORYULE WARD - CR DENNIS BLAKE



Proposed Miniature Railway - McLeods Waterholes, Drysdale Council Says No.

Both during and through the public consultation process undertaken as part of the initial assessment of this proposal, several issues emerged that warranted further and more detailed investigation by Council. In particular, Aboriginal Affairs Victoria identified the potential for a significant number of Aboriginal sites (potentially 30) of Cultural Heritage significance to exist in the location, which would necessitate a full archaeological survey of the site. This would have been in conjunction with a landscape masterplan for the future development and management of the site.

The possible impacts of the proposal upon the fauna using the Reserve could not be fully assessed without further investigation. This would involve analysis of both physical and noise intrusions, remembering that the proposal involves use of the water body for model boating. This is sufficient anecdotal evidence to suggest that McLeods waterhole is a significant (be it only small) habitat area for a variety of birdlife seasonally native to the Peninsula.

The area of McLeods that would be developed as part of the proposal represents the remaining part of the Reserve that has not been developed for active recreation purposes. The proposal, which at some point in the future may wish to expand and diversify, would have the potential to detract from this passive character. There appears to be a significant number of people in the Drysdale/Clifton Springs community that use this part of the Reserve for the purpose of appreciating the local environment and who may be disadvantaged by the proposal.

It is possible that the facility over time will require the provision of additional infrastructure such as access, fencing and the like, which may create an imposition on Council resources and alter the character of the area.

There has been substantial local community opposition to the proposal, comprising in the main, a range of concerns that are well articulated and relevant.

As you would be aware, Council, through its Development and Strategy Committee, has adopted a resolution supporting the further investigation of the development of the Miniature Railway facility proposed by the Drysdale Rotary Club at either the Portarlington Foreshore Reserve adjacent to Parks Hall or at the Leopold Gateway Sanctuary.

Firstly, I would like to point out that I am not a member of this Council Committee and secondly, I expressed my extreme disappointment about any suggestion of the facility being located outside Coryule Ward. On this basis I have to advise that I will not support the location of the Miniature Railway

facility at the Leopold Gateway Sanctuary, but would strongly advocate its establishment at Portarlington.

"BAYSHORE HOME SERVICES"

COMPLETE HOMECARE PACKAGE

**Any work you need
in Home and Garden
FROM \$25.00**

PHONE: 532635

FREE INITIAL CONSULTATION

- ▼ ACCOUNTING & TAXATION SERVICES
- ▼ SMALL BUSINESS CONSULTANTS

ETA
FRANK TIGANI & ASSOCIATES PTY LTD

53 2992
SUITE 5, 6 HIGH ST, DRYSDALE

RECOGNITION FOR QUIET COMMUNITY WORKER

Local Solicitor and Barrister Mr. Basil Ristevski was one of only twenty-five members of the legal profession outside the Melbourne Metropolitan area nominated for the 1996 Pro Bono award for the Legal Profession sponsored by the Victoria Law Foundation.

The awards were established to acknowledge the pro bono legal work performed by solicitors, barristers and community legal centres and recognise outstanding contributions by practitioners in performing free work in a single matter or over a sustained period. Pro Bono work is legal work done at no charge or at a reduced rate.

The awards ceremony in which Mr. Ristevski was invited to be a participant was held on 15th October at Government House Melbourne hosted by His Excellency the Governor Mr. McGarvie, the Honourable Mr. Justice Kirby of the High Court and the Honourable Mr. Justice J.H. Phillips Chief Justice of the Supreme Court of Victoria.

Congratulations to Mr. Ristevski on the nomination as recognition for his extensive community work.

**BELLARINE
AUTO
SERVICES**

Quality Mechanical Repairs
Tuning - Servicing
LPG Conversion - EFI
Tyres - Batteries - RWC
Licensed Vehicle Testers

Mortimer St. Drysdale
Proprietors:
P. Bruce J. Pamplin
Ph. 53 1644

FREE BABY CLUB

**FREE HEALTH
INFORMATION**
on an extensive
number of topics

**DRYSDALE
PHARMACY**
19 SPRINGS RD.
DRYSDALE. 512671

**BELLARINE
PHOTOGRAPHICS**

- * 1 HOUR PHOTOS
- * FRAMES & ALBUMS
- * CAMERAS
- * BLOCK MOUNTING

Now In
Drysdale Village
Shopping Centre
TUCKERRAG
TATTS

Phone 51 3300

**Kodak
EXPRESS**
QUALITY PHOTOGRAPHY SERVICE

Why trust your memories to anyone less.

"Le Shah Boutique"
Ladies Clothing and Accessories

- **New Location**
Shop 5A: Drysdale Village
Shopping Centre
(formally travel agency)
- **Lay-by's Welcome**
(Sizes 8 to 24)

Shop locally for
your best buys! Ph: 53 2511



**DRYSDALE
KITCHENS**

CABINETS & JOINERY

PH:(052)532 774

EST. 1986

"NORTH BELLARINE HOSTEL FOR THE AGED INC.

In its Annual Report presented to the Fifth Annual Meeting on the 25th September, 1996 it was noted that the Committee had achieved the objective of the Public Meeting held on the 18th July, 1991.

A thirty-bed not-for-profit hostel for the aged known as Ann Nichol House located at 80 Willis Street, Portarlington was officially opened on the 3rd February, 1996. It is managed by the Bellarine Community Health Service Inc. and already has met all 25 Standards set by the Commonwealth Government General Conditions, relating to "Keeping the Quality in Hostel Life".

The future role of the Committee will be to keep under review the operation of Ann Nichol House, to consider the development of further aged care facilities on the site and to continue with fundraising.

We are therefore seeking the support of local residents in maintaining and developing this very much needed residential aged care facility".

Ann Nichol
(Hon. Secretary).

A New Choice in Funerals

Louise King Funerals offers funeral services conducted by caring dedicated women.

We are here when you need us. By meeting your special needs, our staff offers you peace of mind.



For further information contact Helene Beaton, Barbara Hoy, Amanda Clingin or Louise King

**25 Myers St.
Geelong**

**Phone:
226363**

LOUISE King FUNERALS

Member: Australian Funeral Directors Association

Fund raising see page 15

JOSHUA

COMPUTER TRAINING

"breaking down barriers"

SHOP 7-8 Village Walk
21 Clifton Springs Rd
DRYSDALE (Old Library)



Adult/Children's classes

Resumes Prepared

Casual Computer Usage

Internet access

Software Sales

For information Ph. 513337

E-mail address-joshua@mail.austasia.net

VARIETY REVIEW CONCERT
SUNDAY 17TH NOVEMBER, 1996
AT 2 P.M.
PARKS HALL., PORTARLINGTON

The concert will feature VAL HANNAH'S SCHOOL OF DANCING and LOCAL ARTISTS. The School has been running for 37 years and trains dancers in classical, tap and theatrical dancing. Students are aged from 3 years to adults.

For many years the School has performed one concert for a charity in Geelong, but this year they will perform on a second occasion - with proceeds going towards Ann Nichol House and the North Bellarine Hostel for the Aged.

The cost of the ticket has been reduced to \$8.00 per person. We invite concert goers to support this local concert in Portarlington. You will be watching the performance of a well trained and dedicated group of dancers.

Tickets may be purchased from the following
Australian Pension Advisory Service Pty. Ltd.
152 Little Malop Street, Geelong.
Drysdale Community Health Centre
Palmerston Street, Drysdale.
Beckey's This N That Gift Shop
60 Newcombe Street, Portarlington

If further information is required please telephone 57 3155 or 59 2763.

MAJOR RAFFLE

To be drawn on Thursday
28th November, 1996.
Tickets \$1.00 each - Available at
Drysdale Community
Health Centre, Palmerston Street,
Drysdale.

First Prize: \$500.00 Furniture Voucher
from Big Shed

Second Prize: Two nights accommodation
including breakfast,
St. Leonards Hotel/Motel.
Valued at \$120.00

Third Prize: Grocery Voucher from a
Supermarket of your
choice. Valued at \$100.00.

Fourth Prize: Porcelain Doll.

BUILDER
PAUL JONES
PH. 513934
~HOUSING~EXTENSIONS~AIR CONDITIONING~
MOBILE 018 593747

DRYSDALE NATUROPATHIC CENTRE
MRS. LISA TAYLOR N.D.
Naturopathy, Homeopathy, Remedial Therapy and Massage



SUITE 4, 11 CLIFTON SPRINGS ROAD, DRYSDALE
Phone: (052) 53 2510 A/H. (052) 512544
CARMOORA CLINIC
343 Moorabool St. Geelong. Phone: (052) 23 2616



Want to sell?

We' ve been selling
properties in
Drysdale &
Clifton Springs for
over 30 years.

We can sell your
property!
Phone us for your
free appraisal.

CKeane ,Drysdale
.CO.

6 High St, Drysdale Phone: (052) 51 2388

other offices at:

7 Geelong Rd. Portarlington 59 2556

84 Orton St. Ocean Grove 55 1222

1389 Murrudoc Rd. St. Leonards 57 1744

CLIFTON SPRINGS DRAINAGE SCHEME COMMITTEE

The Clifton Springs Drainage Action Committee wishes to thank the residents of Clifton Springs for their support during the campaign seeking to have the proposed Drainage Scheme abandoned by Council.

The results of the extensive surveys carried out in catchments 41 and 45 disclosed that there were minimal Drainage problems and that most of these were of a minor nature and could be rectified by localised works if in fact necessary. Preliminary surveys of other catchments also disclosed that there were few Drainage problems and that they also were in the main of a minor nature.

The spokesperson for the Drainage Committee Mr. Ian McKenzie stated that the results of the surveys had confirmed the views expressed by residents at the two public meetings that the overwhelming number of residents did not have Drainage problems.

The Committee had also taken the view that the outfall drains had been allowed to fall into substantial disrepair over many years and should be the responsibility of the amalgamated Council to fund and reinstate and not the residents. The Committee had also advised Council that there was an urgent need for Council to set aside funding to commence reinstatement works at the outfall adjoining the Clifton Springs Bowling Club.

Mr. McKenzie said that the Committee members had put a lot of time and effort into obtaining accurate information and working through the issues and presenting the facts to Council in a constructive way he also stated that the Committee members were very grateful for the assistance given by volunteers in assisting with the extensive surveys in catchments 41 and 45.

The Committee also wishes to thank the residents of Clifton Springs for their support and of course the City of Greater Geelong Senior Engineering Management Staff and Cr. Blake for the way in which they listened and liaised with Committee members and finally for the decision by Council to take responsibility for the restoration of the outfalls at Council expense, and for the abandonment of the proposed Drainage Scheme.

Mr. McKenzie stated that the Committee has fulfilled the task it was originally assigned by the residents however Council has asked that they be able to continue to liaise with Committee members in relation to the proposed outfall works and in relation to any specific Drainage problems that may require attention. The Committee have agreed to this request.



Australian Equestrian Academy

HORSE RIDING
CHILDREN'S & ADULT LESSONS
Tuesday - Friday and all day Saturday.
Try our quiet school horses or bring your own horse
& EXCELLANT AGISTMENT FACILITIES

Phone: 50 1788

or visit us at 1625 Bellarine Hwy., Marcus Hill

CMI

SUZUKI

OUTBOARDS
Authorised Dealer

- SERVICE AND REPAIRS TO ALL MAKES OF OUTBOARDS
- SPARE PARTS
- BOATING ACCESSORIES
- TRAILER, REPAIRS AND PARTS
- USED MOTORS
- PROPELLER REPAIRS
- SLIPWAY AND FULL SHIPWRIGHT FACILITIES
- BOAT SALES AND REPAIRS
- FITTING OUT AND MODIFICATIONS

Customer Satisfaction Guaranteed



CMI
RIPPLESIDE

PH: 722672
LIVERPOOL STRREET,
NORTH GEELONG

ARE YOU INTERESTED?

Over the past years SpringDale has run a C.A.E. Book Club (with small success) and a Literature Group (with great success).

SpringDale is at present looking for a Group Leader to take a Literature Group. If you have a love of the written word and you are interested in joining the group or being Group Leader - please ring 53 1960.

ARE YOU INTERESTED?

A room to spare - and this could be used? A friendly group with interests in patchwork and associated crafts would be most welcome. Ring 53 1960 for further information.

"FAMILY HEALTH ISSUES"

A course for parents dealing with family health issues is scheduled to start on Thursday 28th November. A follow-up morning is planned for 5th December - 9.30 a.m. to 11.30 a.m. Cost \$5.00. Free childcare available. Ring 53 1960 for further information about this course.

"SPRINGDALE EXPLORER"

A new interest group has started running from SpringDale. Known as the "SpringDale Explorer" the group will visit local tourist spots and places of interest on the Bellarine Peninsula.

Hosted by Ms. Pearl Webster a complimentary trip started the project off. Transport was via Community bus and first stop was the Alpaca farm at Curlewis followed by a quick look at the new Secondary College and finally a refreshment stop at Dallimores.

It is hoped that this service will become a regular occurrence and be of benefit to those who wish to enjoy our beautiful peninsula with the pleasant company of others.

If you are interested in joining in with this group on our next outing please ring 53 1960 for further information, alternatively if you have a business or interest you would like to go on our list of places of interest to visit - please ring 53 1960 and leave the relevant information.

Photograph shows happy group of wanderers at the Alpaca farm.



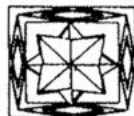
BONE MARROW RECYCLE SHOP

High St. Drysdale

**Donations of
good clothing
and brick-a-brac
needed.**

All proceeds from
our shop go to
help those with
Leukaemia

Drysdale Knit & Sew



Shop 6,
3 Wyndham St.
DRYSDALE.

**Patchwork & Quilting
Supplies, Wool,
Haberdashery**

Ph. 51 2116

Bellarine Hearing Services

Geraldine McClumpha
B.Sc.Dip.Aud. M.Aud. S.A. (C.C.)

AUDIOLOGIST

- * A.H.S. accredited provider
- * Quality Hearing Aids
- * Professional hearing assessment

43 Lt. Myers St. Geelong
Ph. 29 6407

Now at Drysdale
every Tuesday

LEGAL REQUIREMENTS BEFORE YOU CAN SELL YOUR HOME

Before a person can legally sell their home there are 2 major prerequisites that must be satisfied by law.

VENDOR TO PROVIDE A SECTION 32 VENDORS' STATEMENT

Before any person can sell their home they must provide to a prospective purchaser a statement pursuant to Section 32 of the Sale of Land Act. This statement which is often referred to as the Vendors' Statement must provide certain information about the property. The idea behind the Vendors' Statement is to provide information about the property to the Purchaser so that they can make an informed decision whether to buy the property or not.

The Vendors' Statement must be provided to the Purchasers before they can sign a Contract of Sale.

The Vendors' Statement must disclose all information about the property which may in any way affect a Purchaser such as: including details of any easements or covenants affecting the property, the zoning, rates and other outgoings which are charged on the property, any notices which affect the property, a copy of the title and many other matters.

It is extremely unlikely that a proper and valid Vendors' Statement can be provided on the basis of information known by the Vendor. In

most situations a period of several weeks is required to obtain all the necessary certificates and information to have a valid Vendors' Statement.

If your Vendors' Statement provides false or incomplete information the Purchaser has the legal right to withdraw from the sale at any time up until final settlement. If that happens the vendor may still be liable for the agents commission and an action for damages based on the misrepresentation.

Whether you are buying or selling it is important to seek legal advice about a Vendors Statement.

THE SALE MUST BE EVIDENCED IN WRITING:

The sale of house or property must be evidenced in writing. That is, the agreed terms and conditions of the sale must be set out in written form and signed by the Vendor and Purchaser.

The payment of a holding deposit does not by itself form a legally binding contract.

If the above requirements are satisfied then you may have a legally binding agreement to either sell or purchase a property. But it is essential that the above requirements are satisfied.

**ROTARY HOEING
& GRASS
SLASHING**



Large & small areas
IF YOU NEED:

- A VEGI PATCH
- NOXIOUS WEED SPRAYING
- A NEW LAWN
- GRADING
- SCARIFYING
- HARROWING
- PLOUGHING

Contact
**Frank &
Tegwen Vella**

53 1515 or 018 593 992

CONCEPT CAMPERS

Manufacturers and repairers
of Annexes, Awnings, Tonneaus,
Tarps, Horse Rugs, Boat Covers
Custom Built Camper Trailers
Caravan and Boat Storage
Discount for senior citizens

Phone (052) 532569
61-63 Murrodoc Rd.
Drysdale.

**SOLICITOR
&
CONVEYANCING**

Basil Ristevski LL.B

513 453

DRYSDALE C.W.A.

Next meeting, November 12th. Will start at 11.30 for the General Meeting and after lunch (B.Y.O.) the Annual Meeting will be held. November 14th is the Craft Expo at the Community Hall, 10 a.m. where we will be catering for lunches - BASKET LUNCH - and help is needed please.

VIDEO CLASSES

For your information over 40 people have taken part in SpringDale Community Cottage's Video classes since 1993. Of these participants 50% have completed two courses and 10% have reached the highest level - completion of 5 courses.

It has been suggested that a Video Production Group for amateur productions be based in the Drysdale area. What do you think? Are you interested? Since the completion of our own Video "Filling the Gaps" - Introducing your Neighbourhood House, we have received some very positive feedback.

If you are interested let us know on 53 1960. By the way you may Borrow a copy of our video from the local library or from SpringDale if you would like to see what can be done.

DRYSDALE CARPET CARPET COURT

- * Free measure and quote
- * Competitive prices

Phone: Neil Petrie (Prop.)
Wk. 531855 Mob. 041-9519030

Factory 2, 63 Murradoc Rd. Drysdale.

LOSE WEIGHT NOW!

IT'S EASY-WHATEVER YOUR
WEIGHT, WHATEVER YOUR
AGE. YOU CAN DO IT!

Call Ann Wojczuk- 513463 -for Herbalife Products

10% OFF - SEPT 10 - NOV 10

DRYSDALE VILLAGE PIZZA & PASTA BISTRO

OPEN 7 DAYS
*Dine in, Take Away
for Home Delivery*



Ph: 51 3937

Fawlty Towers

HOMEMADE GOURMET FOODS
TAKE-AWAY COFFEE LOUNGE

Join us in our cosy lounge for the best coffee, yummy cakes and eats in town Open 7 days a week, Sat. and Sun. 9 am to 4 pm Orders taken for special occasions Prop. Trudy McPherson Shop 6, The Arcade, Drysdale, Ph. 513312

PENINSULA PLAYERS

Peninsula Players is enjoying rehearsal time ably assisted by those intrepid women from Farndale Avenue - as they prepare for the final play for 1996 - "The Farndale Avenue Housing Estate Townswomen's Guild Dramatic Society's Production of a Christmas Carol".

As usual, the play is under the watchful and encouraging eye of President Phoebe Reece (Margaret Wild), who soothes prima donna Thelma - playing Ebenezer Scrooge. (Bodil Wright); accepts the nervous energy of Felicity - playing Fred Little Fan, Old Joe (Yvonne Larkins); prods into action mercedes-playing, Bob Cratchit, Belle, a Boy (Jane Williams); and tolerates the over acting of Gordon the stage

manager, who because of lack of personnel plays - Mrs. Cratchit, Jacob Marley, Ghost and Mr. Fezziwig (Laurie Deale).

(Julie Kvietelaitis) plays half a ghost, as does (Mark Rechenberg), who is also Adrian - lighting and sound assisted by Cyril (Bryan Eaton).

If you are confused by all this, spare a thought for Directors Dennis King and Kenneth Hemmens.

"The Farndale Christmas Carol" will be performed on 27th, 28th, 29th, 30th November, 1996 at Drysdale Community Hall 8.00pm sharp. Price \$8.00.

BONE DENSITY TESTING OSTEOPOROSIS

THE SILENT EPIDEMIC.
(According to Harvard Medical School USA)

**AFFECTS 1 IN 4
WOMEN
ARE YOU AT RISK?**

FIND OUT WITH A SIMPLE, PAINLESS,
100% SAFE, ULTRASOUND BONE
DENSITOMETER.

NO DOCTORS REFERRAL NECESSARY.

For bookings on 5/11/96 please contact D.C. Pinney Pharmacy Phone: (052) 513 298

Cost of testing procedure, full computerised analysis, self help booklet and advice just \$35.00

**Builder &
Carpenter**

Michael Kragh

Renovations
Extensions
New Homes



018 108986 or 51 3477

**Salvation Army
Family Stores**

Mortimer St.
Drysdale

Ph. 51 2475

**Plenty of Bargains
The Place to Shop**

Come and see us

We are here to Help You



**Drysdale Village
Drycleaners**

Shop 2,
21 Clifton Springs Road
Drysdale

TRADING HOURS

Mon - Fri 7.30 am - 5.30 pm
Saturday 9.00 am - 12.00 noon

Phone 51 3990

BELLARINE SECONDARY COLLEGE

1. DRYSDALE CAMPUS - OPEN DAY - SITE INSPECTION

Saturday November 16th 10 am - 12 noon

Enter via Belchers Road

Inquiries to Ms. Heather McIntyre
Assistant Principal
Telephone 52581700

Year 9 - 12 Queenscliff Campus

Mr. Darryl Wilson - Sub-school Co-ordinator
- Year 9 & 10

Mr. Kevin Tangey - VCE Sub-school Co-ordinator

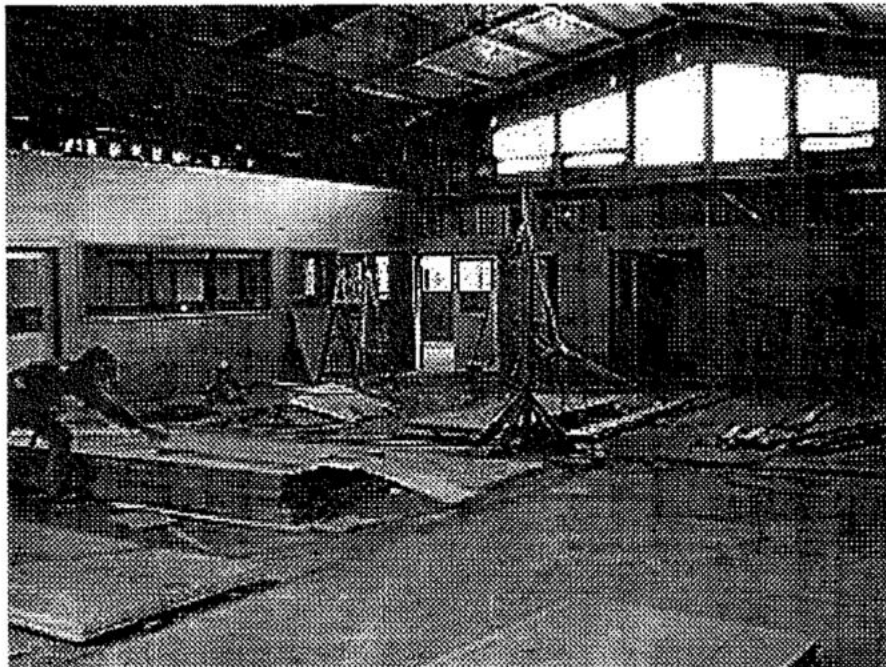
Telephone - 52581700

2. ENROLMENT INQUIRIES FOR 1997

Year 7 & 8 - Ocean
Grove Campus

Mr. Steve Boyle -
Subschool
Co-ordinator

Telephone
52551322



Kings

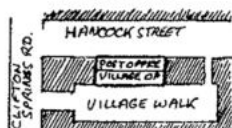
FUNERAL SERVICES

25 Myers Street, Geelong
Phone 22 3688, 21 5760

Serving the families of
Geelong and the
Bellarine Peninsula
with understanding
and care

Uniting Church in Australia
CONCERN

VILLAGE OP SHOP



Village walk Drysdale
Open Monday to Friday
10am 4pm

Donations of goods may be made
at the shop

The *Life*  *line* Shop

Unit 1, 19 Murrodoc Rd.
Drysdale
Phone 53 2168

Bargain Clothing
Furniture, Clothing, Brick-a-Brac
Gratefully accepted
Profits from our shops
help fund Lifeline's 24 hr.
Telephone Counselling Service.

KINDERPLAY

Kinderplay is an organised playgroup for parents and pre-schoolers to attend together. It's a great way to meet other parents and for children to socialise and play in a group.

Sessions are held in the Children's Room at SpringDale Community Cottage. Come and enjoy our new facilities and playground. An annual fee of \$50.00 (including registration) and two Music Workshops per year.

A registration fee of \$5.00 can be left at the office at the SpringDale Cottage, Princess Street, Drysdale to secure a place for 1997. Any enquiries ring the Cottage on 53 1960 or Michelle on 53 1936.

CHILDREN'S ACTIVITY SESSIONS/ OCCASIONAL CARE

Our Children's Activity Sessions operate on Tuesday and Wednesday mornings (9.30a.m. - 12 noon) and Thursday afternoons (12.30 - 3 p.m.). The sessions are fun and stimulating for the children. The children who have attended this year have enjoyed a variety of experiences and activities. The program caters for children up to 6 years of age and they may attend regular session/s or on a casual basis. New registrations are always welcome. If you are interested in this service please call in during a session with your child. Registrations for next year are being taken NOW.

To Register:- Information brochure and Enrolment forms available at the Cottage, 14 Princess Street, Drysdale. Phone Enquiries: 53 1960.

LONGFORD NATURAL STONECHIP COATING

This remarkable coating is

- * Non Slip * Colourfast * Permanent
- * Decorative * Maintenance Free

The coating is NOT pebblemix and is guaranteed for five years. Tested by Unisearch and found to be totally non slip under all conditions it has also been approved by the New South Wales Department of Housing. Applied to the front entrance of Watty Paints in 1982 it is still in near perfect condition. The coating can be viewed at the Ocean Grove Bowling Club or at 26 Allara Court, Clifton Springs. The coating is perfectly suitable for use on the following areas

- * Patios * Steps * Paths
- * Pool Surrounds * Driveways

**For more information and
an Obligation Free Quote contact
Ralph Mogford JP or Robln Long
Telephone 019 999 128,
AH: 51 3225**

**The System carries a
five year written guarantee
and senior citizens discount applies.**



WISE GUYS MENS HAIRSTYLIST "Its the cut that counts"

So come and see
Mandy, Sara, Kirstie
for all mens and boys styling

*** STUDENT AND PENSIONER *
DISCOUNTS**

No appointment necessary

Shop 1,

Wyndham Street,

Drysdale.

(Next to

Bakers Delight)

53 2503



DRYSDALE SCOUTS FUNDRAISER

THE COMEDY NIGHT

PROFESSIONAL COMEDIANS

BRAD OAKES - CHRISTINE BASIL

POMMY JOHNSON

SATURDAY 15/2/1997

DRYSDALE FOOTBALL CLUBROOMS - COMMENCES 8.00 PM

\$22 PER HEAD/BOOK BEFORE 30/11/1996 AND PAY ONLY
\$20.00 PER HEAD

FOR BOOKING OR ENQUIRIES PH LIZ OR ROB ON 513 602

BOOK NOW

LIGHT SUPPER PROVIDED

DRINKS FROM THE BAR

"HARMONY 2 - 1996"

SpringDale Writers Publication on Sale December at \$5.00 per copy. Enquiries: SpringDale Community Cottage.
Phone: 53 1960.

SPRINGDALE \$2 +

We are delighted to welcome a new business to Drysdale Shopping Centre. However, despite the similarity in names, SpringDale Community Cottage Inc. has no connection with the enterprise. We wish them well in their new endeavour.

| |
|--|
| BAYSHORE REAL ESTATE Real Estate & Business Agents Trevor McArdle Licenced Estate Agent REIV Accredited Business Agent Phone: (052) 51 2610 Mobile: 0419 895 562 A/Hrs. (052) 56 2419 26 High Street, Drysdale, 3222. |
|--|

| |
|---|
| DRYSDALE PHYSIOTHERAPY AND SPORTS INJURY CLINIC 512 958 27-29 High Street DRYSDALE, 3222. |
|---|

DRYSDALE HEALTH CENTRE AUXILIARY

By public demand, Lawrence "Kel" Davis will present another talk on "Drysdale Township 50 Years Ago", at the Health Centre in Palmerston Street, Drysdale on Thursday 14th November, 1996 at 8.00 pm.

Admission - Gold Coin. Light Supper Provided.

Enquiries - Norma 512 351
Lesley 512 674

VOLUNTEERS DESPERATELY NEEDED

For Drysdale/Clifton Springs Area
MEALS ON WHEELS
If you have time to spare just a couple
of hours per month.
Call Lee Harvey on 270 679

SPRINGDALE BELLARINA TOY LIBRARY

**Do you want access to more than
100 toys?!**
Yes?!

Join the Toy Library !!

Suitable for 0 - 6 years of age.

There are :-

Ride on Toys: - helps develop motor skills.

Puzzles: - Develops concentration skills and thought process.

Luxury Toys: - the larger more expensive toys.

You can borrow a new toy and puzzle weekly or fortnightly.

Operating hours: 10.30 - 11.30 most Saturdays.

Located at Princess Street, Drysdale, behind SpringDale Community Cottage.

Phone: 53 1960.



Giftwrap

Selection of cards, gifts, crystal,
prints, fine china, toiletries, silk flowers.

Shop 5 Drysdale Village Shopping Centre Drysdale.
Phone: 052-531856

DRYSDALE REMOVALS & STORAGE

Local, Country,
N.S.W. & S.A.
PH. (052) 51 3674

NORTH BELLARINE COMBINED CHURCHES FOOD CARE GROUP TO ALL CARING PEOPLE IN NORTH BELLARINE PENINSULA.

The above Group would greatly appreciate your attendance, if possible, to the Annual Meeting of the Group, to be held on Tuesday 19th November 1996 at 7 p.m. at St. James' Anglican Hall, Drysdale.

The members of the above Food Care Group, supply and deliver emergency food on demand to the Drysdale, Clifton Springs, Portarlington, Indented Heads and St. Leonards area.

On a roster basis, people from each church for a month, look after and distribute the food to the homes of the needy people.

The positions of President, Hon. Secretary and Hon. Treasurer and Committee will become vacant. We would appreciate people coming forward to assist in the running of the Food Care Group.

DRYSDALE SENIOR CITIZENS CLUB

December 9th. This is the day of the Christmas Luncheon at the club. The cost is \$10.00 per head. Aperitifs will be served prior to the luncheon. Raffle tickets will be on sale at the club. Prizes are as follows:-

1st Prize: Christmas Hamper.

2nd Prize: An Electrical Appliance.

3rd Prize: Antique Book donated by the craft ladies of the club.

There will be a door prize and other prizes also. Prize donations will be gratefully received.

Names to be put on list by the end of November for catering purposes.

BOWLS

The annual Arthur Bright trophy was this year won by our Secretary Joan Poustie with runner up Joyce Watts, Well done ladies. Suggestions have been made for a pairs competition to also take place each year, so take your partners folks.

The Christmas Luncheon will be followed by a concert, given by the Drysdale Senior Citizens Concert Party.

BELLARINE
VETERINARY PRACTICE
7 PALMERSTON ST. DRYSDALE

Mon, Wed & Fri 10.00am - 11.30am
2.00pm - 3.00pm

Tues & Thurs 10.00am - 11.30am
5.30pm - 6.30pm

Saturday 8.30am - 10am


Office only (No Vet)
Mon, Wed & Fri 11.30 am - 12.30 pm
Please Phone: 53 1393
Calls outside these hours will be diverted to our Newcomb Hospital

Geelong & Bellarine Podiatry Centre

PAUL GRAHAM KARMEN KRASIC
B.App.Sc.(Pod.) M.A.Pod.A. B.App.Podiatry. M.A.Pod.A.

- Diabetes Management and care
- Ingrowing or damaged toenails
- Lower limb, ankle & foot aches and pains
- Prescription & made to measure footwear

GEELONG
209 Makop St.
Ph. 23 1531
MON - THURS.



Caring For your Family's Feet

DRYSDALE
27-29 High St.
Ph. 51 2958
FRIDAY ONLY

BELLARINE PENINSULA COMMUNITY HEALTH SERVICE INC.

PRESENTS

MEN'S HEALTH FORUM

Date: Wednesday 27th November, 1996
Time: 6.30 p.m. to 10.30 p.m.
Venue: The Springs Reception Centre
Clifton Springs:
Cost: FREE

TOPICS AND PRESENTERS

"Heart Health"
Dr. A. Appelbe - Cardiologist
"Prostate Problems and Common Cancers"
A General Practitioner
"Weight and Nutrition"
Speaker from Gutbusters
"Psychological Health"
Dr. P. O'Keefe - Psychiatrist
"The Male Identity Crisis"
Mr. P. Billings - Psychologist

"Spiritual Health"

Rev. Keith Tinkler - Uniting Church Minister
(Retired)

"Emotional and Spiritual Health"

Professor Padmasiri de Silva
Professor of Philosophy - Monash University
Senior member Australian Buddhist Society

Question Time - Panel

Closing Remarks: Mr. Austin Paterson
Chief Executive Officer
Bellarine Peninsula Community Health Service Inc.

Supper

RSVP: C/o Wanda Kidman
Phone: (052) 59 2537
by Friday 22nd November, 1996

POPPY DAY

THE 11TH DAY OF THE 11TH MONTH

- Remembrance Day 1996 -

Red Remembrance Poppies will be on sale in the Tuckerbag Supermarket complex from Monday 4th November.
Proceeds from sales go to the R.S.L. Welfare Funds.

Please support your returned servicemen by purchasing a poppy.

"LEST WE FORGET"

If visiting the Bellarine Peninsula, drop in for a meal at the

DRYSDALE HOTEL

- Friendly atmosphere
- Counter lunches and teas every day including Sunday
- Cosy log fires
- Geelong's first Pub-TAB facilities

LUNCH 12.00-2.00pm - TEA - 6.30-8.00pm
Your host David Leahy and family
High Street, Drysdale. Phone 512301
(On Geelong-Portarlington Main Road)



Rawleigh

GOOD HEALTH PRODUCTS

Kitchen Cupboard Products

- Vanilla Essence
- Cinnamon
- Vanilla Taploca
- Green Onion & Garlic
- Lemon Essence
- Nutmeg
- Lemon Dessert
- Cheese & Sesame

Elizabeth & John Tovey
Phone/Fax (052) 51 3474
SINCE 1889



The Professionals



Phil
Hodgkinson
AH 55 1043
0419 874 340

Brett
Thompson
AH 53 2364
0419 569 094

Phil
Cumming
AH 51 3047
018 599 232

IT'S SEVEN O'CLOCK !

- Whatever the investment medium the prudent investor buys at (or near to) the bottom of the market cycle.
- Residential property cycles typically run for periods of between five and ten years.

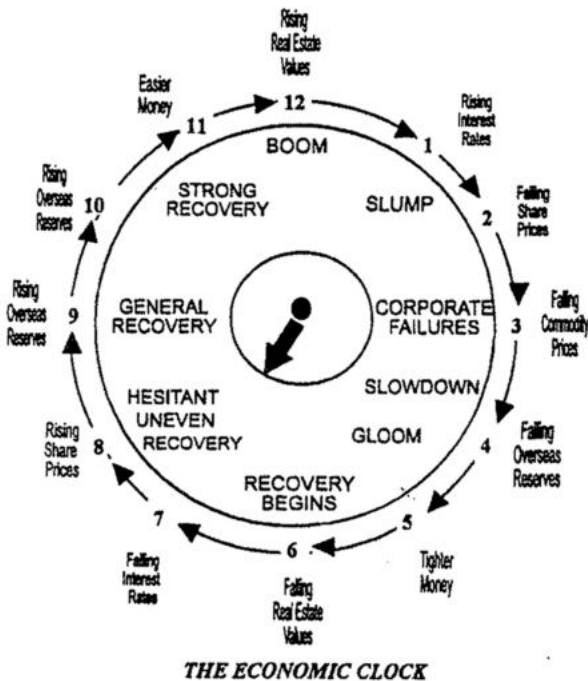
- In most parts of Australia and New Zealand we have now reached 7.00 o'clock on *The Economic Clock*.

So What ?

- Seventy eight percent of residential property investors (landlords) own one property only.

Why ?

- The majority of investors who own just one property do not understand the long term cyclical nature of the residential property market.



Now is the time for the forward thinking investor to re-enter the residential property market and purchase investment property.

Note: The investor who sells now will have absorbed the negligible capital growth of the past five to six years only to pass on the real and measurable growth of the next two to three years to the next purchaser.

Guyett Real Estate P/L

11 Clifton Springs Road, Drysdale

Phone: 51 2847

Together we'll make it happen