

The SpringDale Messenger

Your Free
Community
Newspaper

Compiled and published by the SpringDale Community Cottage Inc A002916V

Circulation 3,700

Vol 10 No.1, February 2000

NEW CENTUARY! NEW YEAR! NEW SIZE FOR THE MESSENGER!

Why change something when it works well and is growing every issue? *Actually that's just the problem.*

The Messenger is growing every issue and is getting heavier as the number of pages increase. SpringDale, as well as delivering 3,350 copies out the residents of the area, also posts out 350 copies and as the weight increases so does the cost. Quite considerably. A decision had to be made - either bear the cost/increase advertising charges/or try a different layout.

It was also suggested that a new presentation would increase interest and further involve the community and the slightly larger Advertisements improve the results for the people who actually pay for The Messenger, that is the local busi-

nesses without whom we would have no local news and information at all.

The committee chose to go with change.

We hope you, our readers like the improvement and let us know what you think. All positive criticism gratefully received. While we were in the area of Community Attention we decided to include a very detailed Community Survey in this issue and ask everyone to please 'HAVE YOUR SAY'. Please spend a few minutes reading and filling in the survey it will help a great deal with our future planning and direction.

**THANK YOU AND
HAPPY READING !!!**

this Christmas Time a very special one, not only for themselves, but also for all the community. We cannot name all the people who participated, however, we managed to track down a few. The Scannell's - Thamballina Rd., Renfrew's - Yarramundi Dr., Lloyd's - Springs Road, Fisher's - Princess St., Drysdale Plumbing - Murradoc Rd., Forget-Me-Not Furnishing - Collins St., Fire Brigade - Princess St. and The Uniting Church in High St. This is only about 1% of those who joined in the fun as every light and every garland added to the sense of a Community welcoming everyone to come and see and enjoy.

Congratulations must also go to The Professionals Real Estate for their Christmas Lights Spectacular Campaign which also encourages people to participate.

Thank you to everyone who put A Light in The Window this Christmas to share and celebrate with their Community the friendship of this very special time of the year.

SpringDale Community Cottage.

CHRISTMAS FEAST

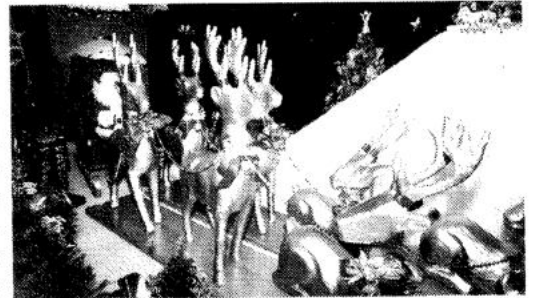
Once again this Holiday and Christmas season brought out the wonderful sharing spirit of our local community.

The delight we all experienced as we visited the homes and business premises of those members of our community, who had dressed them up for Christmas, gave a real feeling of neighbourliness and friendship.

These days we are constantly being lectured by or through the media about the lack of community spirit. What a pity

all those "Experts" did not come for a drive around Our Neighbourhood this Christmas. They would have seen beautifully lit trees and windows, big and small, decorated and displayed to share the joy of this special time of the year with everyone who cared to look and stop to enjoy.

Some of the home and business owners had put in a tremendous amount of time and effort to make



**DRYSDALE
VILLAGE
HARDWARE**
(03) 5251 3267

*YOUR HANDY
HARDWARE
STORE*

THE ARCADE
HIGH STREET
DRYSDALE, 3222.

Elliott's
Tattslotto & Newsagency

**Two
Locations**
Supermarket Complex

&
12 High St. Drysdale
Ph 5251 2776

The SpringDale Messenger

The SpringDale Messenger is compiled by the SpringDale Community Cottage Inc. A0024916V, 14 Princess St. Drysdale, Postal: P.O. Box 80, Drysdale, 3222.

Advertising and Enquiries: PH: 5253 1960. FAX: 5253 3050

Community Groups, Churches, Sporting Clubs, Service Clubs, etc., are invited to submit details of their future activities for regular inclusion in the Community Diary section, or as articles in the news section as appropriate.
Copy may be typed or printed with a good ribbon (preferred), or legibly handwritten and left at the SpringDale office at 14 Princess St., or posted to P.O. Box 80, Drysdale, 3222.

Next Publication:
Copy deadline:
21st February, 2000
Distribution:
10th March, 2000.

Views expressed in this newsletter are not necessarily the views of the Publisher, the SpringDale Community Cottage Inc.

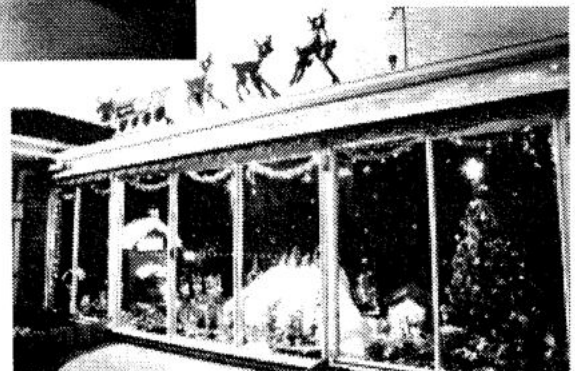
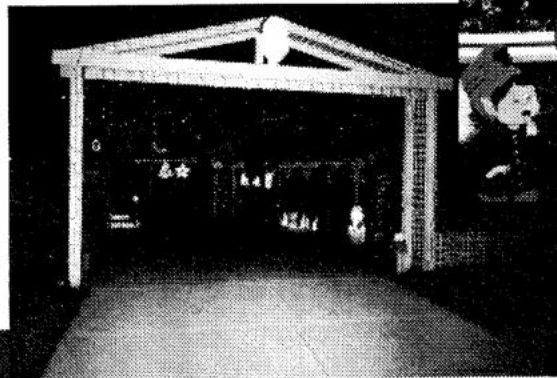
ADVERTISING AND ARTICLES:
SpringDale Community Cottage,
Phone (03) 5253 1960.
To ensure publication in a specific issue, copy must be submitted prior to deadline.
Layout and Design of this issue by
Pagination Design Services, Geelong.
Ph: (03) 5223 2494
email: smd@pagination.com.au

Contents

NEW CENTUARY! NEW YEAR! NEW SIZE FOR THE MESSENGER!	1	FUNDING BOOST FOR LOCAL ATHLETES	11
CHRISTMAS FEAST	1	THE SPRINGDALE SINGERS	11
DRYSDALE - CLIFTON SPRINGS CHRISTMAS BANNERS	3	CLASSES	12
BELLARINE CALISTHENIC COLLEGE	4	Walking Group for Mothers with Prams	14
SPRINGDALE BELLARINA TOY LIBRARY	5	CHILDREN'S PROGRAMS..	14
BELLARINE HISTORICAL SOCIETY	5	ANNUAL CRAFT EXPO	14
TRAVELTALK	6	LEGAL CORNER	15
REPORT FROM CR. ROB BINNIE	6	DRYSDALE COMMUNITY HEALTH CENTRE	16
LIONS CLUB OF PORTARLINGTON DRYSDALE INC.	7	SPRINGDALE COMMUNITY COTTAGE	16
LADIES PROBUS CLUB OF BELLARINE INC.	8	WALK AND TALK PROGRAMME	16
IN YOUR GARDEN	9	RED CROSS CALLING	16
DRYSDALE SENIOR CITIZENS CLUB.	9	Springdale Community Cottage Community Survey.	18
MASSAGE THERAPY	9	BELLARINE AGRICULATURAL SOCIETY INC.	23
SPRAY FARM SUMMER FESTIVAL	10	THE 11TH ANNUAL BELLARINE AGRICULTURAL SHOW	23
COUNTRY WOMENS ASSOCIATION INC.	10	SPORTS REPORT	23
		Guyett Real Estate P/L	
		NEW YEAR NEW HOUSE ...	24

Christmas Feast

continued pgl



DRYSDALE - CLIFTON SPRINGS CHRISTMAS BANNERS

This Christmas the Drysdale - Clifton Springs Community Association erected Christmas Banners around the Business District of the township.

These with the garlands saved from last year's effort and the decorations erected by the businesses the town looked a festive delight over the holiday season.

The designs for the banners were produced by school children through a competition run in the local schools. Two designs were chosen from the many submitted and these were printed by Merv Jennings Signs. Prizes were given to the children who drew up the winning designs and hopefully all those who submitted entries were encouraged to enjoy their experience in this field of art work.

The materials used were paid for through a grant from the City of Greater Geelong Community Arts Programme and the printing was generously donated by Merv Jennings Signs. Sixty Banners were produced and hung in the shop windows or at the shop fronts on plastic poles. Next year it is hoped to erect some of the banners on street poles with the assistance of

PowerCor. However, these will need the correct brackets, which are quite expensive and will need some planning.

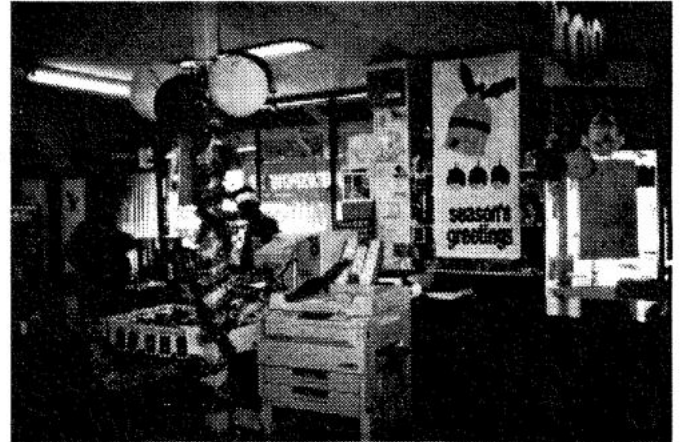
Many of the local business people contributed to the whole process and were very happy with the brisk trade experienced over the Christmas period.

VERY SPECIAL THANKS to the Portarlington/Drysdale Lions Club, Barry Buckle, Max Arnold, Des & Anthony Connor, Ron Hebbard, The Drysdale Fire Brigade and The Uniting Church for work done in erecting and removing the Town Decorations.

A couple of very hot days and a memorable very wet one made these very interesting experiences!!

Many thanks to all involved.

*Wayne Elliott
Chairman
Drysdale-Clifton
Springs Community
Association.*



Kerry's Nail Elegance
Short drive from Drysdale shops.
Relaxing salon
Sterilized equipment

TRY ACRYLIC
OR
GEL NAILS
LOOK SO NATURAL
GENTLE ON YOUR NAILS

Bookings Essential
OPEN FOR APPOINTMENTS ONLY
5253 3107 MELWAYS
Amarina Rd Clifton Springs 238 E.7

Somerset Cottage
Garden & Gallery

1575 Portarlington Road, Drysdale. 3222.
Phone: 03 52531315
Open - Thursday - Monday 10am - 4.30pm
Fine Art, Craft & Collectables

BONE MARROW RECYCLE SHOP
High St. Drysdale

Donations of good clothing and brick-a-brac needed.

All proceeds from our shop go to help those with Leukaemia

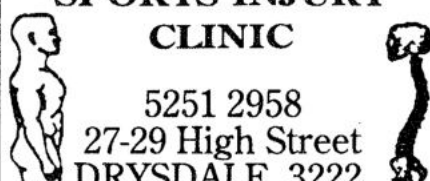
BELLARINE FENCING Co

For all your fencing & gate needs,
- Picket - Paling - Arc.

Phone: Andrew & Galye Baylis
on 5251 3090 or 0417 544 887

DRYSDALE PHYSIOTHERAPY AND SPORTS INJURY CLINIC

5251 2958
27-29 High Street
DRYSDALE, 3222.



Bellarine Hearing Services

Geraldine McClumpha
B.Sc.Dip.Aud. M.Aud. S.A. (C.C.)
AUDIOLOGIST

- * A.H.S. accredited provider
- * Quality Hearing Aids
- * Professional hearing assessment

43 Lt. Myers St. Geelong
Ph. 5229 6407
Now at Drysdale every Tuesday

BELLARINE CALISTHENIC COLLEGE

The Bellarine Calisthenic College is a local group which has been operating for the past 6 years in Drysdale. Since commencing the group has doubled in size from 35 pupils in 1994 to 65 enrolments in 1999.

Calisthenics is a competitive team sport, which involves a team of pupils learning routines - each about 3-4 minutes long. Approximately 6 routines are learnt concurrently throughout the year. The variety of disciplines within Calisthenics makes the sport so appealing: dance, ballet, singing, gymnastics, acting and above all the joy associated with performing on a stage!

What are the benefits?

- Fantastic for co-ordination and body awareness. Promotes a healthy body and mental fitness.

Being part of a team develops self-discipline, teamwork, commitment, responsibility and self-esteem.

- Combination of movement and performance skills provides rhythm, grace, deportment and confidence.

- Calisthenics promotes a healthy lifestyle and lasting friendships.

Pupils range in age from 3 years to 30+! Training takes place once a week and from mid July to mid September/October the College participates in Team competition - locally and in Melbourne.

Over the 6 years that the College has been operating, pupils have received numerous awards for their efforts, including many 1st places and competition Aggregate Trophies.

In 1999, the College was awarded the Grand Aggregate Trophy at the Geelong Teachers' Competitions for having the highest total points over all other competing Clubs/Colleges. All sections were, at some stage of the competitive year, the winners of the Aggregate and Reserve Aggregate trophies at various competitions. An exceptional effort was made by our Junior team who claimed a "clean sweep" at one competition by winning every item! - 7 x 1st placings, winning in one instance by 13 points!

The Sub-Junior section now qualifies to compete at the Royal South Street Competitions in Ballarat, and last year - their first at this competition - they received 1st, 2nd & 3rd placings in various items.

Every effort is made to ensure that the cost of sending a child to Calisthenics is as affordable as possible. The College is run on a non-profit basis with fees set each year to cover the running costs only. There is no need for parents to fill formal Committee positions with all parents work-

ing together as a team to assist in the smooth running of the College.

Accredited Level One Coaches conduct all lessons and are assisted by experienced older pupils and Cadet Coaches who are training to Coach in the future.

Classes are held at the Drysdale Uniting Church Hall in Drysdale on Tuesday and Thursday evenings, the time and night dependent on the girl's age.

Tuesdays

4.30-5.30 Tinies 7 & under
5.30-7.30 Sub-Juniors 9 & under
7.15-9.00 Seniors 16 & over
Commencing 8th February

Thursdays

4.30-6.30 Juniors 12 & under
6.30-8.30 Intermediates 16 & under
Commencing 3rd February

NEW MEMBERS ARE MOST WELCOME!!

Enquiries - Principal Coach -
Mrs. Joanne EATON
Phone: 5255 4837 or 0408329047

1/2 PRICE
Book-Keeping
Up-To-Date Service

... When you invest
in our monthly service

- Full mobile service
- Fixed monthly cost
- Monthly management reports
- Also available - Payroll, Invoicing - Budgeting

PHONE 1800 645 545 NOW
For a FREE no obligation consultation.



Bellarine Peninsula
Garage Doors

Repairs & Service calls
Installations
Electric Remote Controls
Pensioner Discount
& quick service
Call BRIAN
DRYSDALE 5251 3591

Chui Yuan 酒翠
Chinese Restaurant 家園
(B.Y.O.)

TAKE AWAY & HOME DELIVERY
FUNCTIONS & GROUP BOOKINGS A SPECIALTY
QUALITY & CLEANLINESS ARE PARAMOUNT
REASONABLE PRICES
* \$5.00 LUNCH SENSATION MENU

Ph. 5253 1788
Shop 2, 26-28 High St. Drysdale, 3222.

Attention
JOB SEEKERS

Let me help you find the right resume for you. A resume can make the difference when going for an interview.

Your resume is a reflection of yourself. And also how you want employers to see you. There are different styles to suit the job you are applying for, as well as how you wish to portray yourself, to prospective employers.

Lynette's User Friendly Computers.
Ph: 5259 3963.
Cost: \$20.00 Black & White Text
\$25.00 Colour & Clip Art



ROCKET'S
DRIVER
TUITION

INSTRUCTOR - ROD SCHAMMER
(13 years licence tester with VicRoads, Instructor Since 1979)

EXPERT TUITION AT A REASONABLE COST
MANUAL & AUTOMATIC VEHICLES AVAILABLE
STUDENT & PENSIONER DISCOUNT APPLY
PHONE: 5253 3140
OR 0419 802 679



BELLARINE
CALISTHENIC COLLEGE
ENROLMENT NIGHT

TUESDAY 1st FEBRUARY 5.00 - 7.30
DRYSDALE UNITING CHURCH HALL
Classes Commence

THURSDAY 3rd FEBRUARY
JUNIORS - 12 years & under 4.30 - 6.30
INTERMEDIATES - 16 years & under 6.30 - 8.30

TUESDAY 8th FEBRUARY
TINIES - 7 years & under 4.30 - 5.30
SUB-JUNIORS - 9 years & under 5.30 - 7.30
SENIORS - 16 years & over 7.15 - 9.00

New members welcomed
Experienced Teacher A.C.C. Level 1 Coach
Enquiries - Joanne - 5255 4837 or 014 941566



SPRINGDALE BELLARINA TOY LIBRARY

Welcome to Toy Library 2000. We hope that all our members had a Merry Christmas, a Happy New Year and a relaxing holiday. We will be re-opening on Saturday February 5, from 10.30 to 11.30, and we look forward to seeing you all again.

To those of you wondering "what is a Toy Library?" It is just like a Book Library except we lend out toys. It is open to those with children 6 months to 6 years, whether you are a full time family, parent with access weekends

or grandparents who baby-sit the children during the week or on holidays. Each registered child can borrow 2 toys and 2 puzzles for up to two weeks.

This is a low cost way to get access to a large range of toy and puzzles to supplement what they already have, to find out what types of toys they are interested in before you buy something, and to give the opportunity to play with toys that would not otherwise be available to them.

What price for this service? We have a once off payment of \$20.00 for registration, then the ANNUAL fee is only: \$12.50 for the 1st child
\$ 7.50 for the 2nd child
\$ 5.00 for each other.

Please come and see us on any Saturday morning at SpringDale Community Cottage, (look for the Teddy Bear Sign) and we will be happy to show you what we have to offer.

Bellarina Toy Library

BELLARINE HISTORICAL SOCIETY

Will hold a
PIONEER HERITAGE DAY
Saturday 1st April 2000 10 am-5 pm
At Drysdale Community Hall -- Old
Court House Museum --
Drysdale Fire Brigade -- Drysdale
R.S.L. Hall.
- SpringDale Community Cottage.

Displays and Stalls including:-
Bellarine Historical Society, Geelong
Family History Group, First Fleet Fellowship,
Queenscliff Historical Soci-

ety, "Georgiana" 1852 Point Henry
Arrival Descendants, R.S.L., Drysdale
Fire Brigade, Cornish Association of
Victoria and Geelong Branch, Geelong
Historical Records Centre, Marine
History (Jack Loney) Publications,
National Trust (Geelong Branch),
Portarlington Mill, Queenscliff and
District Woodworking Group.
Historic Buses and Early Vehicles.
Farming equipment etc.
Horse - Drawn vehicles.

Activities:- Lions Club of Drysdale/
Portarlington - sausage sizzle.
Drysdale C.W.A. - Devonshire teas.
Historic Bus Tours. Inter - School
Competitions, - 3 sections, great
prizes. And more :-

Come along and enjoy this **FREE
COMMUNITY DAY.**
Sunday 2nd April, 2000.
Historic Sites Bus Tours and Cemetery
Walks. Bookings essential for these tours.
* **Mark this weekend in your diaries now -- not to be missed.**

PIONEER DAY STUDENT ART COMPETITION GREAT PRIZES.

SpringDale Community Cottage Inc. together with The Bellarine Historical Society are conducting an Art Competition open to all Students.

CELEBRATING PIONEER PICNIC DAY APRIL 1st. 2000
HIGH STREET, DRYSDALE.

There are 3 (three) sections:

SECTION 1: Primary Students to Year 5. Topic: - "A Pioneer Portrait". Art Project any medium.

SECTION 2: Years 6 to 9. Topic: - "A Family Tree" Pictorial Presentation.

SECTION 3: Open. Topic: - "Historical Site on The Bellarine Peninsula." Landscape - any medium.

PRIZES. IN EACH SECTION FIRST PRIZES \$50.00 SECOND PRIZE \$30.00
Certificates of distinction for outstanding effort will also be awarded.

CLOSING DATE

All clearly marked entries

**MUST BE AT SPRINGDALE COMMUNITY COTTAGE, 14 PRINCESS
STREET, DRYSDALE BY 3. P.M. THURSDAY 30th MARCH, 2000.**

PRIZE GIVING

2 P.M. SATURDAY 1st APRIL
SPRINGDALE COMMUNITY COTTAGE.

All entries will be displayed and open to the public on Saturday 1st April.

For further information telephone SpringDale Community Cottage on 5253 1960.
9.30 - 3.30 Monday to Thursday and 9.30 - 12.30 Friday.



TRAVELTALK

HARVEY WORLD TRAVEL

NEW ZEALAND

Land of the long white cloud.

Only a four-hour flight from Melbourne, Auckland is situated on twin harbours and known as the "City of Sails", it is surrounded by water and built on a group of extinct volcano's. A look out over the city from the Sky Tower is a must; this structure also houses the Sky City Casino and is in the city centre. The bustling waterfront is where you can take a ferry trip or a pleasure boat ride around the Harbour, world attention is on Auckland as it hosts The Americas Cup challenge this year.

To the North is the lovely Bay of Islands, driving up there is a most picturesque experience with a beautiful view around every bend of the road. Paihia is the base for fishing trips and trips to "the hole in the rock" by jet boat or something more sedate, on a green promontory overlooking the bay the Treaty of Waitangi was signed making New Zealand a British Colony and Maoris and Europeans one nation.

Rotorua is amazing with its thermal parks, to stand so close to boiling mud and geysers makes you realise what the inside of this planet is really made of! This is a town with such a lot to offer and it's worth taking a few days to explore its gardens and parklands are immaculate.

The South Island is easy to reach by ferry or air and is totally different from the north. The spectacular mountain scenery is reminiscent of Switzerland and excellent skiing holidays can be had around the Queenstown area.

The Scots would feel very much at home in places like Dunedin and Christchurch apart from the names of these towns, they were first settled by the Scots in the 19th century and many of the graceful historical buildings have been lovingly preserved.

There are some excellent special prices to New Zealand from now until April, so it's a great time to go!

Avril Lucas
Travel Consultant
Harveyworld Travel Drysdale.

REPORT FROM CR. ROB BINNIE

Welcome to a New Year and a new century. May I take this opportunity to wish you all the very best for the coming year. Many of us when spending time with family, friends and loved ones over the holidays shared in a sense of hope in what is to come. For those of us lucky to live on the glorious Bellarine Peninsula, we can look forward to many positive developments as our area of the City of Greater Geelong continues to flourish. As I have done in the past, I will continue to work hard to represent the coastal communities at Council and act in the best long term interests of our region.

The coming year will bring much activity on the ground as several projects commence or take shape. The Peninsula is moving forward and with developments such as the Bellarine Multi Arts Facility, streetscape projects at Portarlington, Ocean Grove and St Leonards, gas connection, new events etc. it's all happening.

Importantly, all of these developments are for the community. Each will play a positive role in the Peninsula's growth and enhance the lives of all of us who live here.

Speaking of events, don't forget to take a look at the wonderful series of events that form part of the Spray Farm Summer Festival. This event puts the Bellarine Peninsula in the spotlight around the state and does a fantastic job of showing off what we all know and love about the coast. Don't forget

also to head to Ocean Grove for the Cup Carnival on the 27th February. It should be another great year.

The City of Greater Geelong is happy to support events in our community because they not only provide locals and visitors alike with great opportunities to enjoy, but also raise the profile of our towns and beaches and for local businesses, it's a great boost.

Finally, I look forward to talking with you throughout the year through this great community publication. It is a terrific way of communicating with the heart of the community, but don't forget you can drop me a line at the address below or contact me via my Council phone/fax.

Cheers,

Cr. Rob Binnie
P.O. Box 104, Geelong. 3220.
Ph/Fax: 5256 3154.




 **HARVEY**
world travel
The Travel Professionals

**NEW ZEALAND
SUMMER SALE**

**\$479 pp
Includes Qantas Air
3 days Car hire.**

***Can be extended.**

**SHOP 2A
6 HIGH STREET, DRYSDALE.
TELEPHONE: 5251 1125
MOBILE: 0417 129702**

 **DRYSDALE TIMBER-**
Ultimate Hardware

**Stockists of:-
Timber/Handyman & Builders.
Hardware.
Specialists in Paint with a Colour
Consultant on hand.
New Nursery.
Large range of Garden Supplies.
Stock Feed.**

**We supply everything you may
need for inside and
outside your home.**

**PH. 5251 2852
OPEN 7 DAYS
LOT 1 MURRUDOC RD.
DRYSDALE.**

If visiting the Bellarine Peninsula,
drop in for a meal at the

DRYSDALE HOTEL

- Friendly atmosphere
- Counter lunches and teas every day including Sunday
- Cosy log fires
- Geelong's first Pub-TAB facilities



LUNCH 12.00-2.00pm - TEA - 6.30-8.00pm
Your host David Leahy and family

High Street, Drysdale. Phone 5251 2301
(On Geelong-Portarlington Main Road)



WISE GUYS MENS HAIRSTYLIST "Its the cut that counts"

So come and see
Stan, Wendy, Manfred
for all mens and boys styling

* STUDENT AND PENSIONER *
DISCOUNTS

No appointment necessary

Shop 1,
Wyndham
Street,
Drysdale.

5253 2206



LIONS CLUB OF PORTARLINGTON - DRYSDALE INC.



Happy New Year to all of our Community members. The Lions club wish you all, a prosperous and safe year ahead.

The Xmas/New Year season has been a busy time for the Lions Club members. We have involved ourselves in a wide variety of activities throughout our community, the challenges and the fellowship is what our members thrive on, making our work interesting.

Some of the activities were :-

Children's Xmas party where many children and parents met Santa, played in the 'Jumping Joey's' castle and totally enjoyed themselves.

Sausage sizzles at a variety of functions one of which was the 'Blood Bank' collection day.

Lions Spinning Wheel at the Markets and on the footpath at the Portarlington Hotel where many people win a crayfish for the cost of \$1 a ticket, good value.

The Lions Xmas Dinner was attended by approx. 80 guests, friends and relations joining the Lions Club to celebrate special events such as the 60th Birthday of Lion Adrian Mannix OAM, wedding anniversaries and other

birthdays. 'True' and some 'not quite true' stories were told as part of a very pleasant and entertaining evening.

The Drysdale Rotary Club invited the Lions Club to a BBQ and fellowship evening at the Miniature Railway, located at Point Richards, Portarlington. To view the buildings, the trains in action, the layout of the grounds and to observe the enjoyment on people's faces makes this attraction a credit to the members of the Drysdale Rotary Club. Well done!

The Lions Club is looking forward to activities and projects to come such as Adopt-A-Park work, the ongoing spinning wheels, assisting in the next Rail Trail stage, cutting firewood for the needy, participating in the Pioneer Day. These are only a portion of what Lions do in our community and enjoy doing them as a team, as Lions.

It takes a lot of muscles to frown and only a few muscles to smile so,
HAPPY New Year.

Paul Jones
President.

THE BELLARINE BALL



2000



WHEN - FRIDAY 10th MARCH, 8 PM - 1 AM
WHERE - PONY CLUB GROUNDS,
RESERVE RD, DRYSDALE.

DRESS - BLACK TIE

COST \$25.00 (+ BOOKING FEE)
FROM CC MUSIC

TICKET PRICE INCLUDES: LIGHT SUPPER,
FIRST TWO DRINKS AT VENUE FREE.
PARTY BUS, ENTRY AND DRINK
CARD TO GEELONG HOTEL.

ALL DRINKS AT BALL, AT STUDENT PRICES.

FEATURING:
SLAM

MINIMUM AGE 18 YEARS. ID REQUIRED.
MANAGEMENT HAS THE RIGHT TO REFUSE ENTRY.

Great

rates

like these...

1 YEAR
5.5% pa

3 YEARS
6.4% pa

5 YEARS
6.7% pa

Are our

gift

To you.

PH 5229 4903

APAS Australian
Pensioner
Advisory
Services

"Helping Australians invest wisely"
First Floor, 257 Moorabool St, Geelong

Applications for investment must be on a form attached to a current prospectus.
Australian Pensioner Advisory Services P/L ACN 007 427 974 Holder of dealers
licence number 88176.

Visit our Website: www.apas.com.au

LADIES PROBUS CLUB OF BELLARINE INC.

Registered No. A14696T

The Committee of this club, wish all the producers and compilers of the SpringDale Messenger a very successful year, and a satisfying one in respect of the co-operation and willingness of the community to join in, and participate in some of the numerous classes that they provide for us.

Christmas was the time to celebrate, and we celebrated in a different style at the Springs, where we had our Christmas dinner, and entertainment. The Dinner was enjoyed by all and was the roast dinner we were hoping for. The Springs looked after us well, and we want to thank them for that.

The entertainment was a Country Band called "Steelin Time", the group consisted of Val Lewis's daughter Lynda, and her husband Don and their good friend Maurie. To add to the scene some of Vals bootscootin friends came along to dance for us. Also as a Special, the committee did a line dance, some with very little or no prac-

tice. We soon found out who was fit, but it was good fun anyway.

The Speaker for the January 17th Meeting, it to be the well known local celebrity Mr. Adrian Mannix, he is to be introduced by his Aunt Dulcie Ward, one of our Honorary Members.

After the January meeting, some of the members will be going to Lavendar Cottage in Portarlinton for lunch.

There are only a few seats left on the coach to Marysville on Feb 23rd, 24th and 25th.

The inter club activity of cards, scrabble and mahjong continue, as well as the card making group who excel in producing the most delightful greeting cards for the club members, for Birthdays, Get Well and thinking of you at times of bereavement.

The membership number continues, which is a good sign.

Until next time.

*Yours in friendship,
Iris. (Liz) Tolton.*

BELLARINE AUTO SERVICES

Quality Mechanical Repairs
Tuning - Servicing
LPG Conversion - EFI
Tyres - Batteries - RWC
Licensed Vehicle Testers

Mortimer St. Drysdale
Proprietors: P. Bruce J. Pamplin

Ph. 5253 1644



18-20 HIGH ST. DRYSDALE.
OPEN 7 DAYS A WEEK

November to April: 10am - 5pm
May to October: 11am - 4pm

All Public Holidays except Good Friday and Christmas day.
New Members always Welcome

INVESTMENT PROPERTY

Dear Landlord,

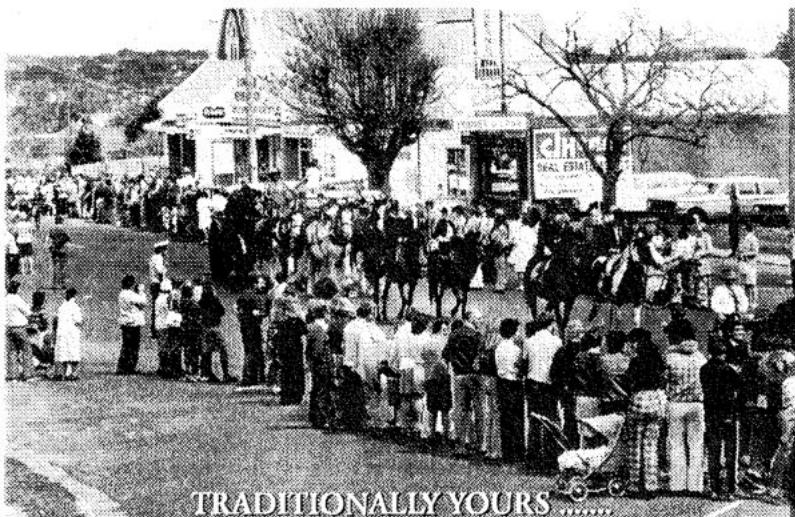
Do you want to achieve the best possible return on your investment property? Naturally, you do! Your local

C.J. Keane & Co

office can assist you in achieving this aim by offering you the services of a Property Manager who is dedicated to protecting both the physical buildings that comprise your investment as well as the income stream that it generates. A Property Manager who will look after your Property as if it were their own!

- We conduct a regular inspection and report back to you.
- All prospective tenants must pass reference investigations.
- Our offices are computer linked.
- Rental arrears are followed up daily.
- We regularly undertake rental reviews.
- Rental Managers regularly attend ongoing training courses to keep them up to date with management techniques and legislation.
- Rents are paid via periodical debit.
- Quick disbursement of payments to landlords.

Contact us today for a free and confidential appraisal on your property.



TRADITIONALLY YOURS

... For more than 60 years C.J. Keane & Co has helped local residents buy and sell homes. We know your neighbourhood and what is Happening with property values. If you think That experience counts, give us a call ...

CJKeane & CO.

5251 2388

IN YOUR GARDEN

The middle of Summer is well and truly upon us. The weather has been hot and dry, the Water Restrictions have been on. This should not be the death knell for your garden, it is possible to keep it all alive and not waste water. For the clever ones of you who have mulched your gardens you should be reaping the rewards of less frequent watering's and generally happier plants. A mulched garden can last a lot longer between drinks and does not stress as much under severe conditions as an unmulched garden. With prolonged periods of dry that we have had, the soil becomes quite repellent of water making it very difficult to get it wet enough to soak our plants. Products like Wettasoil and Saturaid change the way that water reacts with the soil and allows much better penetration and absorption of water into the ground. This in turn enables you to more effectively water your plants by getting the water into the ground instead of running off down the drive. The combination of mulching and re-wetting agents is ideal while we are experiencing the prolonged dry that we are. The dry does bring about some advantages, the roses have been very good again this year. As long as they are getting some moisture, preferably in the morning, they will bloom and bloom again in this sort of weather. This time of year one needs to think about a summer prune for the roses, take about 1/3 off to outside pointing buds, and give them a burst of food. This will ensure a good Autumn flush off colour, ooooooh Autumn, cool and may be some rain, joy oh bliss.

*Neil Muhlhan
Alinga Nursery*

Keep Your Garden Alive

with mulch's, wetting
agents and the best wa-
tering equipment from

Alinga Nursery
Cnr Jetty Rd & Railway Cres
Drysdale ph: 52531299

DRYSDALE SENIOR CITIZENS CLUB.

Our year finished on a high note with the members enjoying a beautiful lunch at the Drysdale Hotel on December 13th followed by a concert given by our own Concert Party at the clubrooms after lunch. A great day enjoyed by all was the consensus of opinion.

To start off the year 2000, the committee and helpers put on a Millenium lunch for the members on January 3rd which was a huge success, Bingo followed after lunch with quite a number of lucky winners.

On January 31st (Monday) our club day, there will be a sausage sizzle plus sweets and followed afterwards by Bingo. This is to celebrate Australia Day, which is on January 26th. The previous Wednesday - more on how that went in the next edition.

February 7th will be the next committee meeting day at 10.00a.m. fol-

lowed at 1.30pm by the half yearly General Meeting, so please note this date in your diaries.

Other dates to note - the day trip on March 2nd (Thursday), firstly to High Point West in the morning and then onto the Melbourne Concert Hall for the Max Bygrave show in the afternoon. This trip was so popular it was filled in no time. More on the events of the day in a later edition.

The Club's birthday is in March - details of date, time and all else happening on the day will be up on the board in the clubrooms shortly.

Our very best wish to all our members who are not so well.

*Until next edition,
Yours sincerely,
Iris M. Astill.*

MASSAGE THERAPY

Available now at Drysdale Community Health Centre - Massage Therapy. The benefits of massage are numerous, and include, improved circulation and muscle tone, increased blood supply and nutrition to muscles, promoting flexibility in connective tissue and helping reduce oedema in extremities. However the most popular aspects of massage are to create a feeling of well-

being and the relaxing of muscle tension.

Massage styles on offer at the Drysdale Community Centre are relaxation, therapeutic, sports massage as well as trigger point therapy.

For bookings or enquiries phone: 5251 2291.

Introducing



Johanna Ollis Heather Blair Patti Rohan Roslind Green

This is the Stockdale and Leggo Sales Team at Ocean Grove. These four dynamic women are professional, loyal, dedicated to the task, and very capable to assist you with your property needs. We have established a successful combination of marketing services, to provide you with an outstanding level of service, of which we can customise to suit your individual requirements. Our office is open seven days a week, ensuring a high level of commitment and level of service to you our valued client.

Stockdale & Leggo (Ocean Grove) Pty Ltd
72 The Terrace Ocean Grove Vic 3226
Ph: 5255 1380 Fax: 5255 2158

Stockdale & Leggo

SPRAY FARM SUMMER FESTIVAL

WEEKEND TWO FEBRUARY 2000

SPECIAL COURTYARD RECITAL
- 300 RESERVED SEATS ONLY.

FRIDAY 25TH FEBRUARY 2000.

Franz Schubert Recital.
Recital commences 8.45pm.

SATURDAY 26TH FEBRUARY 2000.

Ellington at 100.
Lincoln Centre Jazz Orchestra
With Wynton Marsalis.
Wynton Marsalis leads the world's greatest jazz orchestra, celebrating 100 years since Duke Ellington's birth.
Gates open at 4pm. Concert commences 7.30pm.

Performance concludes 10pm with a fireworks display.

SUNDAY 27TH FEBRUARY 2000.

The Band of the Scots Guards with pipes and drums from the Scots Battalion marching from the sea to the stage - a spectacle not to be missed.

52 of Great Britain's finest Bandsmen will be joined by Scots singer, MARION MARTIN, In celebration of Scottish music.

Gates open 2pm. Concert commences 4.30pm. Concert concludes at 6.30pm.

For further information and bookings. Phone: Spray Farm on 5259 1357. Geelong Performing Arts Centre on 5225 1200.

COUNTRY WOMENS ASSOCIATION INC.

DRYSDALE BRANCH.

Do you want to join a HAPPY, FRIENDLY, GROUP of ladies?? If so, we would love to see you.

We meet at 1.30pm on the 2nd Tuesday of the month for a general meeting; some sort of competition, i.e. prettiest plate, old embroidery etc., single or double bloom flowers display, birthdays etc. Some days a speaker and last but not least a very nice afternoon tea and cuppa.

During the year we knit for premature babies, Cottage by the Sea, Trauma Teddies etc. and in general help others where we can. Cost is 50c for the afternoon tea.

Do you like craft? We have a craft day on the 4th Tuesday at 11 o'clock. Bring your own knitting, crochet etc. and come for the company if you don't like what we are currently doing. It is a B.Y.O. lunch and cost is \$1.50.

We also have bus trips, concerts, fashion parades, help at the Geelong Show, and usually enjoy our days together. Age is no limit, from 30's to 80's so far and we are always hoping for some young members.

Our meetings are held at the Springs, in the room downstairs near the pool.

Further enquiries to 5253 2757 or 5251 2693.

Salvation Army Family Stores

Mortimer St. Drysdale

Ph. 5251 2475

Plenty of Bargains

The Place to Shop

Come and see us We are here to Help You

MAGGIE GOVE N.D.

Bowen & Natural Therapist

Member of A.N.T.A.

Drysdale

03-5253 2230

Drysdale Village

Pizza & Pasta Restaurant

Fully Licensed (BYO Wine Only)




Telephone 5251 3937

Inquire within for our latest Delivery Specials
Open 7 Days A Week
Dine-In • Take-away • Home Delivery
Shop 7/26 High Street Drysdale

Home Deliveries to
Drysdale • Clifton Springs • St Leonards • Portarlington • Leopold

DRYSDALE COMMUNITY MARKET



Quality home made goods for sale
Third Sunday of every month
(October - May) 9.00 a.m. - 1.00 p.m.

1999 and 2000 Dates

February 20th
March 19th
April 16th
May 21st

Drysdale Recreation Reserve (Malways 238 68)
Enquiries Phone Renate on 5251 2642

Drysdale

Your One Stop Plumbing Shop

Plumbtec

Bathroom Kitchen & Plumbing Supplies



PH: DRYSDALE 52531268 GEELONG 52221268
TANKS FOR DRINKING WATER & GARDENS

Bellarine VETERINARY PRACTICE

7 Palmerston Street, Drysdale.

EXTENDED HOURS

Monday - Thursday 9a.m. - 12.30pm
1.30p.m. - 6.30p.m.

Friday & Saturday 9a.m. - 12 Noon.

Consultation by Appointment.

PHONE: 5253 1393

FUNDING BOOST FOR LOCAL ATHLETES

Member for Bellarine, Garry Spry is urging local athletes to further their sporting careers by taking advantage of the Victalent 2000 Scheme.

The continuing Victalent 2000 Scheme provides financial assistance for rural athletes who have demonstrated a potential for improvement in their chosen sport.

"Country electorates have won a 50 per cent increase in funding for the Victalent Grant Scheme, which means next year almost 300 athletes across the state will receive an average of \$400 to assist with training and competition travel costs," Mr. Spry said.

"Accommodation and air travel vouchers will also be available and athletes will be eligible for one of eight monthly encouragement awards."

"I urge any athlete hoping to take that all important next step in their sporting career to apply for funding," he said.

Entry forms for the Victalent 2000 Scheme are available from the office of Garry Spry MLA, Member for Bellarine at Shop 1, Newcomb Central, 71 Bellarine Highway, Newcomb, or by contacting Sport and Recreation Victoria.

Applications close on February 28.

Further information, contact Garry Spry MLA on 5248 3462.

THE SPRINGDALE SINGERS

The SpringDale Singers have resumed their weekly meetings with more members and a replacement piano.

The new members showed their interest after the Singers Open day early in December and the brief demonstrations at SpringDale Community Cottages day in the middle of the month. Some who had thought of themselves only as "former-singers" decided that they could and would enjoy themselves singing again in a mixed (un-audited) choir.

The Singers Open Day was on a day of 35 degrees, but thanks to the generosity of the Senior Citizens was moved over to the air conditioned comfort of their hall Which completely filled up with attentive visitors. This very full rehearsal included all those pieces best liked by the members of the choir, from well-learned items to comparatively recently introduced ones, and even one short piece they had never seen before that day. This last was to demonstrate how the choir works, to a piano, with the music in their hands, and working through all the parts in turn. (It turned out quite well.)

It was announced that the choir would not sing anything composed before the twelfth century or later than the twentieth, but in about twenty-four items they covered a lot between those dates, from ballads and rounds to cho-

ruses from the classics and modern musicals. Some excellent singing and thoroughly good entertainment.

Having two conductors and two accompanists gives the choir great stability, and helps towards the stated purpose which is for members to thoroughly enjoy what they are doing every meeting, without requiring them to attend every week, or having to stick to a schedule of music to be mastered by any particular time.

The visitors on the Open day were specially invited or responded to an advertisement, but visitors are welcome to sit in on any of the SpringDale Singers meetings, whether simply to listen, or to 'try it out' and see if it suits them. They even get a free 'cuppa' at the interval. Those who decide to stay become members of SpringDale Community Cottage Inc. and then contribute one dollar to the music purchase fund each time they come.

SpringDale Singers meet in the Community Hall, High Street, Drysdale every Tuesday afternoon from 1.30 to 3.30pm except during school holidays (when many members have other responsibilities). Visitors are welcome without any prior arrangement, or enquiries to Gerald or Marguerite Edgar on 5253 2347.

DIZZY TOYS

**!! Valentine's Day !!
Balloons and More**

\$1.00 Lucky Dip *

Congratulations to Carol Connelly For winning our Xmas Backpack Hamper (Thanks to Danni - Peter Cramps Pharmacy for drawing the winning ticket).

Shop 18, Village Walk Shopping Centre.
19-21 Clifton Springs Rd
Drysdale, 3222.

Ph/Fax: (03) 5251 1009
Mob: 0412 866 823



**Bellarine S.E.S. Unit
Re-Union/Awards Night
Thursday 2 March 2000
7.30 p.m. at Grubb Rd.
Local Headquarters.
All past members are invited.**

**Contact:
Sue Pialekers PH: 5256 2868
Lorraine Hall PH: 5251 2893
To confirm attendance by
Tuesday 22nd February.**

Linda Stephens' Hairdressing

**** NOW IN DRYSDALE ****

19 years experience in all current trends in ladies', men's and children's hairdressing.

School Holidays over!
Need some pampering?

Add some Body or A splash of Color
And I will give you a FREE conditioning treatment.
Offer valid to 31 March 2000.

**Phone Linda
5253 3039
for an appointment**

CLASSES

SPRINGDALE COMMUNITY COTTAGE

COURSE GUIDE

FOR TERM 1 – Year 2000

ADULT EDUCATION PROGRAMS...CHILDREN'S PROGRAMS...CRAFT & GENERAL INTEREST

For More Information or to Enrol Contact
Springdale Community Cottage
9.30am – 3.30pm Monday to Thursday; 9am-12.30pm - Friday
Phone: 52 531960 or
call into 14 Princess Street, Drysdale, 3222
Childcare available to daytime classes at \$2.50 per class - bookings essential
5% discount on some classes to concession card holders

ALL COURSES MUST BE PAID FOR 1 WEEK PRIOR TO COMMENCEMENT

Should a class be cancelled due to lack of enrolments or another reason fees are refunded in full and enrollees notified by phone. People wishing to withdraw from a course must do so prior to commencement of the course.

Where fees have been paid a refund will be issued with an administrative fee of \$8.00 deducted. Where a person withdraws after commencement of course the full cost of the course will be charged.

HEALTH & WELLBEING

Yoga Therapy

Experience balance & harmony of mind, body, emotions & spirit. Exercise through breathing, stretching and relaxation.

Tuesday 6 – 7.30pm from
1st February – 4th April or
Tuesday 7.45-9.15pm from
1st February – 4th April

Fee: \$86.00 10 * 1 ½ hr sessions
Tutor: Glenda Breedveld Venue:
Bellarine Community Health Center –
21 Palmerston St, Drysdale

Yoga for primary children

A dynamic fun class for kids – incorporating activities that improve health & fitness in body & mind to develop attention and stimulate creativity.

Tuesday 4.30-5pm from 1st February
– 4th April
Fee: \$65.00 * 10 ½ hr sessions
Venue: Ocean Grove Neighborhood
House – 91 The Parade

Tai Chi

Calm and focus your mind. Relax and strengthen your body. Beijing 24 form to be taught by experienced instructor trained in Melbourne and China.

Beginners Class
Monday 6.30 – 7.30pm from
31st January – 3rd April
Continuing Students
Monday 7.45pm – 8.45pm from
31st January – 3rd April

Fee: \$77.00 10* 1hr sessions
Tutor: Sue Simpson Venue: Bellarine
Community Health Center –21
Palmerston Street, Drysdale

Meditation

Chakra mediation – use the energy centres of your body to relax, refresh and become more spiritually aware. Easy to learn and do.

Thursday 7.30 – 8.30pm from
24th February to 23rd March
Fee: \$43.00 5 * 1 hr sessions
Tutor: Maggie Gove Venue:
Springdale Community Cottage

Understanding Grief

Many of us experience grief at some time in our lives through the death of someone we love. We also experience grief in other aspects of life – loss of job, a relationship or our health. Grief affects us in many ways and women and men grieve differently. This session presents an opportunity to discuss and understand more about the grieving process.

Thursday 2nd March – 7.30pm –
9.30pm or
Monday 3rd April – 10am-12pm
Fee: \$10.00 Venue: Springdale Com-
munity Cottage

ARTS & CRAFTS

Painting

Watercolors for Beginners through to advanced

Interested in painting? Interested in watercolors? This course is designed for new starters and those with some basic watercolor experience. Run by a qualified art tutor.

Tuesday 22nd February – 4th April 10 am - 12 pm

Tuesday 22nd February – 4th April 12.30 – 2.30pm

Fee: \$70.00 7 * 2 hr session + supply of some of own materials

Tutor: Brian Close Venue: Springdale Community Cottage

Beginners

Drawing Class

Learn to develop your hand/eye co-ordination and sketch what you see. Learn how to draw, line, shape and shade. Learn how to highlight and detail your drawings. Try Still Life, Portraits or Landscapes. See how simple it can be, try techniques working from your own photos and real life. Try greylead, ink and charcoal. Provided by qualified art tutor.

Wednesday 9th February – 5th April 7pm-9pm

Fee: \$90 9*2hr session + supply of some materials

Tutor: Kate Brewster Venue: Springdale Community Cottage

Childrens Drawing Classes

For primary school children an after school activity that will assist in developing hand/eye co-ordination. Specifically designed for children this will teach basic skills and teach them how to draw, line, shape and shade. It will enable them to learn to draw figures and animals. Not only will it be a learning experience it will be lots of fun. Provided by qualified art tutor.

Thursday 9th March to 6th April 4pm-6pm

Fee: \$50.00 5* 2hr session + supply of some materials

Tutor: Kate Brewster Venue: Springdale Community Cottage.

Machine Quilting

for Beginners

Gain sewing machine confidence by making a patchwork quilt entirely by machine. The quilt you will make will be 122cm * 158cm. You will need to bring along your own sewing machine and a material list will be provided on enrolment.

Thursday 2nd March - 23rd March 1pm-3pm

Fee: \$45.00 4*2hr session + supply of some materials

Tutor: Ruth Trethewie Venue: Springdale Community Cottage

Folk Art

With a few simple strokes, circles and triangles you are on your way to creating a bouquet of flowers. Anyone can paint these designs, no previous skills required. Learn how to freehand your designs and also to color mix. Make table mats, folders or more elaborate items. List of materials required available from Springdale.

Monday 14th February – 27th March 10-12pm (not 13/3 – public holiday)

Fee: \$65.00 6 * 2hr session + supply of some materials

Tutor: Delyce England Venue: Springdale Community Cottage

Cross Stitch

This workshop is for beginners. A full kit will be supplied on the day.

Thursday 30th March 1-3pm

Fee: \$13.00 Tutor: Joy Wallis Venue: Springdale Community Cottage

Glass Painting

Make those plain glasses attractive with pretty painted designs. This course is designed for beginners.

Thursday 17th & 24th February 7pm-9pm

Fee: \$28.00 + some materials Venue: Springdale Community Cottage

GENERAL INTEREST & SKILLS

Comprehensive Computer Course

We have teamed up with the Gordon Institute of TAFE to offer a comprehensive beginners computer course. This will be a 18 week course covering topics such as computer operations, database & spreadsheet fundamentals; wordprocessing.

Thursday 10th February – 29th June (no classes during term break 13/4-20/4) 9.30am – 12.30pm

Fee: \$137.30 (+textbook \$63.00) or if in receipt of government benefit \$66.65 + textbook

+ Amenities Fee of \$22.00

Venue: Springdale Community Cottage

BOOKINGS – directly to Gordon TAFE on 52250843

Computers

(Windows for beginners)

A non-technical course for absolute beginners & those with basic skills. It is a hands on, informative course that looks at the various applications that run from Windows software and how you can get the most out of it. It will provide a understanding of computers and also the Internet.

Tuesday 1st February to 7th March; 5.30pm – 8.30pm.

FEE: \$79.00 6* 3hr session

TUTOR: Chris Hackett

VENUE: Computer Room, Bellarine Secondary College.

Woodworking

for Women

For beginners & advanced. Covers reading plans, proper measuring, safe machine use, gluing and laminating, assembling and fitting, sanding and finishing. Start off making a blanket box, coffee table or maybe a bookcase. This is one of our most popular classes so enrol early.

Wednesday 9th February – 5th April 5pm-8pm

Fee: \$110.00 plus materials 9*3hr sessions

Tutor: Desiree Somavilla Venue: Bellarine Secondary College

Food Handling and Safety Certificate 1 & 2

Certificate 1 Food Hygiene is essential for any retail food business & requirement by law in Year 2000

Certificate 2 is essential for managers and supervisors in food preparation or service areas and provides a comprehensive overview of the relevant legislation

These certificates are now offered at a special discount rate so book early.

Certificate 1 - 8th & 15th February 6.30pm - 9.30pm - Fee: \$50.00

Certificate 2 - 22nd February 6.30pm - 9.30pm Fee: \$50.00

BUT if undertake both Certificate 1 & 2 total fee is \$50.00

Venue: Country Fire Authority, Drysdale.

Belly Dancing

Enjoy this age-old celebration of dance. Inclusive of all age groups, body sizes and fitness levels.

A specialist tutor will attend fortnightly to further develop specific dances & movements. This group is for beginners and the more advanced dancer.

Tuesday 15th February - 4th April 7.30pm - 9pm

Fee: \$45.00 * 8 * 1 1/2 hr sessions

Venue: Drysdale Community Hall - High Street

Italian

Wanting to travel to Italy? Just wanting to learn a new language? This course is designed for beginners working through greetings, general expressions, alphabet, everyday conversation. Run by qualified Italian tutor.

Tuesday 15th February - 4th April 6.30 - 8.30pm

Fee: \$85.00 - 8*2hr sessions

Tutor: Enza Prestipino Venue: Springdale Community Cottage

SPRINGDALE COMMUNITY COTTAGE

Walking Group for Mothers with Prams

An opportunity for mothers with babies &/or young children to meet and enjoy a weekly morning walk. The walks will be held each Monday 1 p.m. The walk will be followed by tea and a chat in a friendly atmosphere with room for children to play. As part of the program once a month the morning tea will include an information session on issues relevant to mothers with young children. The walk and morning tea is free.

FIRST WALK STARTS ON Monday Feb. 14 leaving from the Cottage at 1 p.m. For further information and bookings please contact Springdale Community Cottage on 52531960.

CHILDREN'S PROGRAMS

Music & Movement

(2yr - 4yr olds)

Children naturally want to move, dance and sing to music. This term the class is being delivered as part of the popular Mini Maestro program and will include music and movement through singing, rhymes, fingerplays, stories, dancing, creative movement, games and musical instruments. Parent participation is required.

Thursday from 17th February to 6th April 1.30 - 2.00pm

Fee: \$35.00 8 * 1/2 hr session Venue: Springdale Community Cottage

Childrens Drawing Classes

For primary school children an after school activity that will assist in developing hand/eye co-ordination. Specifically designed for children this will teach basic skills and teach them how to draw, line, shape and shade. It will enable them to learn to draw figures and animals. Not only will it be a learning experience it will be lots of fun. Provided by qualified art tutor.

Thursday 9th March to 6th April 4pm-6pm

Fee: \$50.00 5* 2hr session + supply of some materials

Tutor: Kate Brewster Venue: Springdale Community Cottage.

Kinder Playgroup (3+)

Parents & children involved in a variety of play activities - painting, playdough, rice play, dress up, puzzles + outdoor activities.

Wednesdays 1pm - 3pm from 2nd February to 5th April

Fee: \$5.00 registration & \$50.00 per year

Occasional Care

New three hour sessions to enable parents to take a break or undertake courses, do shopping etc. Also gives your child an opportunity to socialise and play with other children in a supervised program.

Bookings for the year 2000 can be taken from the 10th of January.

The first session will commence on Tuesday the 1st of February.

Tuesday, Wednesday & Friday mornings - 9.00am to 12pm

Fee: \$14.00 per session

3 year old kindergarten

Our Thursday morning session is now full. If you are interested in a Monday afternoon session please indicate interest as soon as possible.

**ANNUAL
CRAFT EXPO**
**DRYSDALE COMMUNITY
HALL &
SENIOR CITIZENS HALL**
SATURDAY 18TH MARCH 2000
10AM - 3PM
\$2 Entry Fee

DEMONSTRATIONS, SALES,
EXHIBITIONS & RAFFLES

Learn a new craft, purchase gifts, marvel at the talent in our local community, celebrate Senior Citizens Week

BASKET LUNCH AVAILABLE
(Proceeds to CWA Special Projects)

Presented By:
Springdale Community Cottage,
Drysdale C.W.A and Drysdale
Community Crafts to celebrate
Senior Citizens Week

For further information or if you are wishing to display or demonstrate your craft
Phone Springdale Community
Cottage 52 531960 or
Joy on 5251 3696

LEGAL CORNER

SWIMMER INJURED IN SURF:

There was a sign placed in the middle of Tamarama Beach facing out to sea, which indicated by words and picture that surfcraft were prohibited. Nevertheless, beach inspectors described board riders as "always a problem". The main reason for board riders disregarding the prohibition was that although they could and did enter the water and surf to the north of the beach, Tamarama was a very convenient sandy point of exit. On the afternoon in question, Peter Bloom was bodysurfing between the flags some 60 to 70 metres from the beach. The flags had been erected by the council's beach inspectors. As he rode a wave he was struck in the neck by a fibreglass surfboard. He made his way back to the beach where he "collapsed on the sand" and remained there for 15 minutes before speaking with the only person on beach patrol, a 13-year-old boy. Bloom issued proceedings against the council alleging negligence and was awarded approximately \$40,000 in damages for his injuries plus costs. The council was found to have been negligent in not having beach inspectors on the beach at the time of the accident, having insufficient surf patrol members on the beach at the time of the accident and having insufficient signs to warn and deter surfboard riders. (The Council of the Municipality of Waverley v Bloom (1999) Aust. Torts Reports 81-517.) The council appealed against the find-

ings of negligence and in August this year, a majority of the NSW Court of Appeal dismissed the council's appeal and held it liable for the swimmer's injuries. The court found that although the council had an adequate system for protecting swimmers from board riders in place, at the time of the incident, neither of the two inspectors happened to be looking out in the direction where Bloom was swimming and there was only one member of the surf lifesaving patrol on duty when he staggered up to the beach. A majority of the court held that the risk of an accident from the presence of surfboard riders was clearly foreseeable and that neither of the two beach inspectors on the beach was keeping a look-out at the time of the injury. The trial judge was therefore entitled to find that the negligence of the council had caused the accident. In the view of the majority of the court, however, the presence of additional signs would not have avoided the accident by deterring surfboard riders generally or the surfboard rider who actually struck the respondent. Each case involving negligence will of course be decided on its own facts. However, in determining the relevant standard of care, three factors will be considered: the seriousness of the injury likely to occur; the likelihood of the risk eventuating; and the expense, difficulty and inconvenience involved in taking preventative measures.

SOLICITOR & CONVEYANCING

Basil Ristevski LL.B

5251 3453

DRYSDALE CARPET COURT

**CARPET - VINYL
CERAMIC TILES
FLOATING WOOD
LAMINATE FLOORS**

Proprietor: Neil Petrie
Phone: 03 5251 1855 Mobile: 0419 819 030
63 Murradoc Road, Drysdale.

Blueberries at Tuckerberry Hill

35, Becks Rd, Drysdale. 3222.
Via Murradoc Rd., Melway Map Page 15.
Ph: 03 5251 3468. Fax: 03 5253 2591
Email: tucker@ne.com.au

Pick your own Blueberries starting Boxing Day (26th December). Now that we have netted to control hungry birds the season will last two or three months. Blueberry jam, chutney, sauce, juice & muffins available. Fresh picked Blueberries available in season, Frozen Blueberries all year. Open daily 9am to 5pm during season. Other times please phone for an appointment to avoid disappointment. Amenities: Picnic facilities, B.B.Q. Tea Rooms, Toilets. Ample parking.

CARPET STEAM CLEANING

**MARICK CARPET CLEANING
DICK BOLAND**

Ph 5259 2217

Mobile 0412 517 065

**Carpets, Lounge Suites
Car Upholstery Stain Guard Available
FREE QUOTES**

PHARMACY OPEN SUNDAY 9am-noon

**Weekdays 9am-6pm
Sat 9am-1pm**

David C. Pinney

**Shop 5/3 Wyndham St.
Drysdale**

Ph. 5251 3298

**Clifton Springs**
GOLF CLUB

Clearwater Drive,
Clifton Springs. 3222.
Ph: 5251 3391 Reg: A0006439X

Play By The Bay

- Golfing membership now available
- Social groups & Trade days welcome
- Golfing Tuition available
- Meals available 7 days/nights with Chef Neill Sharer (bookings essential)
- Live entertainment
- Tabaret Venue - 40 machines, latest games

Your complete entertainment venue

**For bookings and further information
Telephone the Club on 52 513391**

DRYSDALE COMMUNITY HEALTH CENTRE

BRIANMULLER
(BSW.ILLINOIS,BSW MELB)

Family and Relationship Counsellor

Is the Relationship not working?
Is everything Falling apart?
Is nobody listing?

Available for Consultations
Wednesday afternoon and Evening
1.00pm - 8.30pm

You could be a Senior!
You could be at School!
You could be a member of a family!
It could be all the family!

Where:
Drysdale Community Health Centre
21-23 Palmerston St.
Drysdale. Ph: 5251 2291

SPRINGDALE COMMUNITY COTTAGE WALK AND TALK PROGRAMME

Telephone: 5253 1960
WALKER'S WANTED

Walk and Talk your way to health.
Join a friendly group of walkers in your
own neighborhood every Wednesday
at 9.30 AM, and 1 PM, from
SpringDale Community Cottage, 14
Princess Street, Drysdale. Walk fol-
lowed by morning and afternoon tea.
Walk and tea is free.

Starts Wednesday February 16th.
Leader: Hilary Dean

RED CROSS CALLING

Just a reminder that Red Cross Call-
ing for the year 2000 begins on the
weekend of March 19th and 20th.

The Portarlington Red Cross Unit
would be grateful of any helpers. If
you are able to spare some time for
collecting please contact E. Harrold.
Phone: 52512511.




Quality Butcher
PETER HOMMELHOFF
**HOMMY'S
QUALITY MEATS**
For something new and different
16 High Street, Drysdale 3222.
Phone: 5251 2270



**LAWNMOWING
DIVISION**
CARL OLSSON - Franchisee
B.H.: 13 26 13 A.H.: (03) 5253 2032
MOB.: 041 612 7 862
• Complete Garden Maintenance • Gutter Cleaning
• Rubbish Removed • All Garden Needs.
*FREE QUOTES
* FULLY INSURED
* ALL WORK GUARANTEED

BUILDER
HIA MEMBER *Paul Jones* Registered B.P.B.
Ph. 52 513934
NEW HOMES ~ EXTENSIONS ~ AIR CONDITIONING
Mobile 0419 354259

**BELLARINE CHRISTIAN
BOOKS and RESOURCES**



- Cards
- Books
- Bibles
- Gifts
- CD's, tapes, videos
- Non-alcoholic wines

Shop 2, 6 High Street, Drysdale.
Ph: (03) 5251 3491 Fax: (03) 5251 3495

DRYSDALE & PENINSULA FUNERAL SERVICES

Drysdale and the Bellarine Peninsula now has
its own locally owned funeral directors.

- Personalised experienced staff to meet the individual needs of families
- Chapel and carparking facilities
- Pre-arranged funerals
- Pre-paid funerals
- Catering.

24 HOURS A DAY - 7 DAYS A WEEK
PHONE: 5251 3477
1 HIGH STREET, DRYSDALE.

DRYSDALE REMOVALS & STORAGE

Local, Country,
N.S.W. & S.A.
PH. (03) 5251 3674

DRYSDALE VILLAGE DRYCLEANERS

Drycleaning, repairs &
alterations also Shoe Repairs.
Drycleaning 3 Garment Special
\$15.50 *conditions apply.
HOURS 7.30 - 5.30 Weekdays.
9 - 12 Saturday.
21 CLIFTON SPRINGS RD, DRYSDALE.
PHONE: 5251 3990.

USED CAR SALES

Phone: 5222 1606
 Fax: 5221 8608
 Mobile: 0418 554 011

KEITH PURCELL

**Frank Burge
 Cars**

172 Fyans Street, South Geelong 3220
 LMCT 1433

CARROLL'S WOODCRAFT SUPPLIES

66 Murradoc Road, Drysdale 3222
 Ph: 03 5251 3874 Fax: 03 5251 3864
 E-mail: carrolls@pipeline.com.au

CRAFT SUPPLIES.
 MACHINERY & HAND TOOLS .
 WOODTURNING & CARVING &
 PYROGRAPHY (WOODBURNING) TUITION.
 PRODUCTION AND ONE OFF TURNING.
 SAW SHARPENING SERVICE.
 POWER TOOL REPAIRS.

CAFÉ A BICA

Eat in or Take-away
 Morning & Afternoon Teas
 Light Lunches & Snacks

Freshly Ground Coffee & Twining's Teas
 Cakes, Slices, Raisin Bread & Homemade Muffins

Cake & Cappuccino \$3.50

Homemade Quiche, Lasagne & Burgers
 Pies, Pasties, Chips, etc.
 Fresh Sandwiches, Rolls & Focaccias Made to order.

Opening Hours: Mon - Fri 9-5 Sat 9-2

Drysdale Village Shopping Centre,
 Opposite Safeway

Phone: 5253 1200

Professional

Counselling Practice

Caring & Confidential-fees based on income



**Personal *Relationships *Child/Youth
 *Grief *Loss *Divorce *Emotional *Spiritual*

PH: 5253 3060

219-223 Jetty Road Drysdale 3222 Fax: 5251 3191

INSTYLE BLINDS

QUALITY BLINDS AND CURTAINS
 AFFORDABLE PRICES

OUTSIDE AWNINGS

(Free measure & Quotes Shop-at-home service)

- Venetian Blinds
- Vertical Blinds
- Pleated Blinds
- Holland Blinds
- Awnings
- Drapes
- Repair & Maintenance Service

14 Swan Parade, St. Leonards Vic. 3223.

Ph: 5257 2029

CLIFTON SPRINGS CAKE SHOP

DARYL & JULIE FORD
 OWNERS

2 PINNAROO AVENUE, CLIFTON SPRINGS
 PHONE 5251 3139

RIISING TO YOUR PASTRY KNEADS



Springdale Community Cottage Community Survey.

Have Your Say (No name required)

Springdale Community Cottage is currently undertaking some planning which is part of our ongoing commitment to both promote and encourage community participation in meeting its needs.

Springdale would appreciate your feedback on the activities and programs currently provided by the cottage and input about possible future directions.

Please take a few minutes to complete the attached survey.

When completed, detach the survey and post (or just drop it in to us) at:
'Springdale Community Cottage'

14 Princess St. Drysdale.

Please return by the 18th February 2000.

Thank you for your time and contribution.

CONCEPT CAMPERS

Manufacturers and repairers of Annexes,
Awnings, Tonneaus, Tarps, Horse Rugs,
Boat Covers Custom Built Camper Trailers
Caravan and Boat Storage
Discount for senior citizens

Phone (03) 5253 2569
61-63 Murradoc Rd. Drysdale.

AUSTRAL CLEANING SERVICES

CARPET STEAM CLEANING

- DOMESTIC & COMMERCIAL
- QUALITY WORK ASSURED
- OBLIGATION FREE QUOTES

Phone: 5251 2709
Mobile - Ian: 0418 593 682
Sharon: 0417 547 056

Assist your child's progress in MATHS & ENGLISH

Using the Kumon Method

- Features
- Individualised programme
 - Easy Starting point
 - Daily study



DRYSDALE STUDY CENTRE
Phone Jeanette Lindgren: 5251 3662
Mobile: 041 140 1459

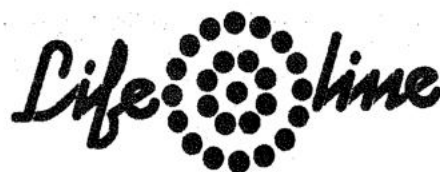
*Forget
Me
Not*



USED FURNITURE & GOODS AT AFFORDABLE PRICES

We also buy
used furniture and goods.

16 Collins Street, DRYSDALE
(next to the bottle shop)
PHONE: 5253 1690



Lifeline Shops have a wide range of all the following items



Our stores are located at:

16 Gordon Avenue	Geelong West	5229 8765
152 Bellarine Highway	Newcomb	5248 3800
19 Murradoc Road	Drysdale	5253 2168
5/2A Gordon Avenue	Geelong West	5222 6418

(Furniture at 5/2A Gordon Avenue only)

LIFELINE ALSO SELL INDUSTRIAL RAG
RING 5222 6418 FOR A PRICE

Trees for Life

A natural memorial in the heart
of the Bellarine Peninsula

A special way
to honour a
family member
or friend



130 Bellarine Highway, Newcomb
Ph: (03) 5251 3626 all hours
www.hepner.com.au

Please take a few minutes to complete the following survey.

Even if you haven't used the Cottage before, your input will help to make us a more responsive service.

1/ Some general information
(Please circle as appropriate)

A) Age range

<20 21 31 41 51 61 70>
 30 40 50 60 70

B) Male []
Female []

C) What is your Post Code? _____

D) Which language do you mainly speak?
I mainly speak:

E) Employment

- [] Unemployed - seeking full time work
- [] Unemployed - seeking part time work
- [] Employed - unpaid family worker
- [] I work part time
- [] I work full time
- [] Retired
- [] Other:

F) Are you considered to have a permanent or significant disability?

[] Yes

[] No

2/ The Springdale Messenger is compiled and published by Springdale Community Cottage. Please tick the following:
(Can tick more than one)

A) Do you receive the Messenger at home?
(i.e., is it delivered to you?)

[] Yes

[] No

[] No, but I get it elsewhere
(Please specify where):

B) How well do you think the Messenger works for the community, in letting you know what is available in the local area?

[] Not satisfactory

[] Satisfactory

[] Very satisfactory

[] Excellent

[] Other comments:

C) In what ways could the Messenger improve its services to the local community?

[] Provide more general interest articles

[] Provide more community service information

[] Increase its availability
(Please specify)

[] Other, Please comment:

D) This is the first issue of the Messenger in its new larger size.

Do you find it:

[] Easier to read

[] Easier to handle

[] Better presentation

[] Other: (please comment)

3/ Have you ever participated in any of the services or programs provided through Springdale?

[] Yes, Go to question ten

[] No, Please continue

4/ How did you hear about Springdale in the first place?

- This is the first time I have heard about it
- Word of mouth
- A referral
- The Messenger
- Newspaper
- Other (Please specify):

5/ Are you aware of any of the services or programs that Springdale currently offers to the community?

- Yes
- No
- A little bit
- Other (Please specify):

Springdale are hoping to find out what classes, programs or services you, your family or neighbors might find interesting, fun or helpful.

6) We have come up with a few ideas, Please tick those you think you, or others might participate in if offered:

- Computer skills (Introduction)
- Job preparation classes
- Return to study class
- Art classes
- Craft classes
- Food handling courses
- Cooking
- Healthy living classes (Tai Chi, Yoga)
- Parent Support
(Building on family strength)
- Learn to play guitar
- Book Club
- Creative writing group
- Social games/ Cards
- After school activities for primary age children (Art, craft, yoga)

7/ Please list any other ideas you might have for possible new program or services below:

WE NEED YOUR HOME TO SELL!
We have many unsuited buyers waiting to purchase
And we desperately need homes urgently.

If you have been considering selling your property this is NOW the time to list it for sale while prices are high and buying enquiry is strong. Don't wait until the potential dampening effects of the G.S.T. come into force.


Bayshore First National is a member of the largest real estate group in Australasia and we are able to offer you the very best service available.
If you are buying or selling property contact us for personal, professional attention.

 **Bayshore** FIRST NATIONAL REAL ESTATE

26 High Street, Drysdale. Telephone 5251 2610

**SHIATSU
THERAPIST**
Dip Shiatsu & Oriental Therapies
Member STAA

Jennie Urquhart
Phone: 5250 2984

 **MORTIMER
PETROLEUM**

**PETROL STATION &
CONVENIENCE STORE**
97 High Street Drysdale Phone 5251 2603
Petrol, Autogas Bait & Fishing Supplies

CAR WASH
Wash \$3.00 Wash & Polish \$4.00 With Petrol
Open 6.00am-10.00pm

8/ What are some of the main reasons you might use Springdale in the future? (Can tick more than one)

- To meet new people
- To join a class
- To learn new skills
- To participate in something I enjoy
- To utilize child care facilities
- Other comments suggestions:

9/ Would you like to know more about the program/ services/ classes Springdale provides?

Yes.... then give us a ring on 52531960, drop in and visit us at 14 Princess St. Drysdale, OR fill in the slip at the end of this survey and post it off.
No..... Thank you for your time in filling out this survey.

(Continued from question two.....)

10/ If you have used any of our services or programs in the past, please specify which one/s

- Adult Education classes
(Which one/s)
- Craft groups
- Other groups (please specify):
- Toy Library
- Childrens services, Please specify
(Occasional Care, etc.)
- Information and resources
- As a volunteer
- Other (Please specify):

**11/ What were the main reasons you chose this service/ program/ course?
(Can tick more than one)**

- Preparations for future study/ work
- Provided a service I required
- Social aspects (Have fun, meet new people)
- Able to participate in something I enjoy
- To develop personal skills
- Had a good reputation
(eg, well run, good service)
- Close to home
- Other (Please specify):

12/ A) How did you hear about Springdale in the first place?

- Word of mouth
- The Messenger
- A referral
- Newspaper
- Other (Please specify):

B) How easy was it to find out about Springdale and its services?

- Very easy
- Easy
- Took some effort
- Difficult
- Other comments/ suggestions:

**13/ How worthwhile did you find your experience at Springdale?
(Did it generally meet your needs?)**

- Very unsatisfactory
- Unsatisfactory
- Good
- Very good
- Excellent
- Other comments/ suggestions:

**Drysdale
Knit & Sew**



**Shop 6,
3 Wyndham St.
DRYSDALE.**

**Patchwork & Quilting
Supplies, Wool, Haberdashery
Ph. 5251 2116**

Get Setup & Trained with
M.Y.O.B.



PHONE 1800 645 545 NOW
For a FREE no obligation consultation.

Uniting Church in Australia
CONCERN
**VILLAGE OP
SHOP**

Come and browse through our range of good quality ladies and mens wear, plus our selection of young adult and childrens clothing and our range of small household goods.

DONATIONS OF GOOD CLEAN CLOTHING AND SMALL HOUSEHOLD GOODS REQUIRED
Phone: 5251 3640.
Shop 19/4 Village Walk, Drysdale.
Hours: Mon - Frid 10.00a.m. - 4.00p.m.
Sat - 9a.m. - 12 Noon.

14/ How could we improve the services provided at the Cottage?

(Can tick more than one)

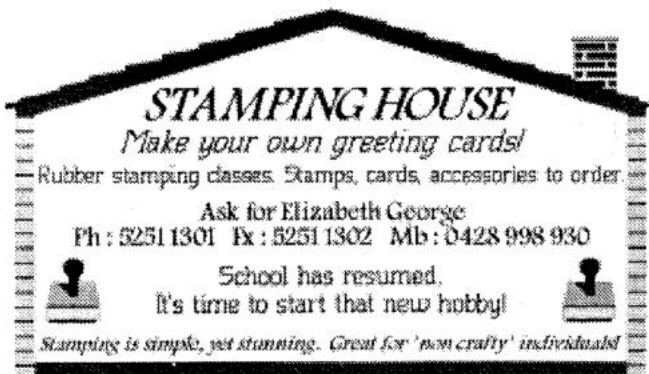
- Provide all venues in the local area
- Provide a broader range of services
- Provide a wider variety of classes
- Other comments/ suggestions please:

15/ How long were you involved with the Cottage? (Approximately)

- Just once
- A few times (Up to three)
- Ongoing (Please specify):
- Other (Please specify):

16/ Do you think the cottage offers a suitable variety of programs for the people in the community to choose from?

- Yes
- No
- Don't know
- Could be improved by.....



STAMPING HOUSE
Make your own greeting cards!
Rubber stamping classes. Stamps, cards, accessories to order.
Ask for Elizabeth George
Ph: 5251 1301 Ex: 5251 1302 Mb: 0428 998 930
School has resumed.
It's time to start that new hobby!
Stamping is simple, yet stunning. Great for 'own crafty' individuals!

17/ What program/ service might you, your family or friends and neighbors find interesting, fun or helpful?

The following are some ideas. Please tick those you think might be useful for yourself or others.

- Computer skills (Introduction)
- Job preparation skills
- Art classes
- Craft classes
- Cooking
- Food handling
- Healthy living (Tai Chi, Walking)
- Parent Support (Building on family strength)
- Learn guitar
- Book club
- Creative writing group
- Social games/ Cards
- After school Activities for Primary School Age (Art, Craft, Yoga)
- Other ideas? Please jot them down below:

If you want more information sent to you, then cut below and post

To: Springdale Community Cottage
14 Princess St. Drysdale.

I would like further information about Springdale and it's activities sent to me:

Name: _____

Address: _____

Affordable Funerals

Simple. Dignified. Caring

Start a Pre-Paid Funeral Plan with \$500 and instalments to suit you.

Call all hours

 **5251 3111**

West Coast 5254 2707 Surf Coast 5261 3388

FREE INITIAL CONSULTATION

- ▼ ACCOUNTING & TAXATION SERVICES
- ▼ SMALL BUSINESS CONSULTANTS

FTA
FRANK TIGANI & ASSOCIATES PTY LTD

5253 2992

CRN. OF SPRINGS RD. & HIGH ST., DRYSDALE

BELLARINE AGRICULTURAL SOCIETY INC.

THE 11TH ANNUAL BELLARINE AGRICULTURAL SHOW

12th March 2000
at
Reserve Road, Drysdale.
9am - 4pm..

Local School Bands * Ferret Racing * Rat Fancier Comp.* Milk the Cow* Make Milk to Butter * Magician * Guess the Weight of the Bull * Wood Carving * Camel and Pony Rides * Ute Competition * Nail Driv-

ing Competition * Pets Competition * Miss Showgirl & Tiny Tots Competition * Dog Jump * School Art * Vintage Machine Display * Fergie Tractor Display * Wild Image * Craft Demonstration * Home Brew * Stall and Trade Stands * Numerous Family Activities *

A full Catalogue of Judged Events and, much more.

ADULTS \$6.00
CHILDREN UNDER 16 &
PENSIONERS \$3.00
CHILDREN UNDER
5 YEARS - FREE
FAMILY ADMISSION (2 ADULTS &
3 CHILDREN) \$12.00

Phone/Fax 5248 5963

SPORTS REPORT

DRYSDALE HAWKS FOOTBALL CLUB INC.

To all members, Life members, sponsors and players of the Drysdale Hawks Football Club, football season is upon us once again, although for our dedicated Ladies' Committee and Bar Manager, Mick Coleman, it would seem the season has never finished. I must congratulate them on their work, because it has enabled your Club to have a healthy credit figure.

It is an honor to have been elected your President for this year. I must welcome two new members to our Executive in Mr. Cliff Stride as Treasurer, replacing Leigh Chambers who has taken on the role of Assistant Treasurer. Cliff is an accountant, and this will be a great plus for the Club with the GST advancing. Mr. Bill Sheahan has taken on the position of Secretary, with Merrilyn Muller stepping to become Assistant Secretary. I know both these gentlemen will enjoy their time with us and they will enhance the performance of our Club.

This year will see the culmination of an event, which has taken much planning, a 50-Year Reunion Dinner Dance. This will be held on Saturday April 29th at the George Popescu Room at the Geelong Football club and will be a great opportunity for all connected with the Club over the past five decades to get together. Teams of each decade and the "legends of the past 50 years will be named". Organisers have been working overtime trying to locate the 700 plus players who

have played during that time, so we hope there will be a great turn out on the night. The Drysdale Football Club has a very long and proud history in the district and this will be an occasion to relive some of that history. Phil Sarah has taken on the role of Club Coach, being responsible for both senior teams this year. Restructuring of the coaching panel is, I believe, an opportunity to strengthen our commitment to the young players in our club. Along with Phil, we have had the opportunity to secure Pat Burns and Justin Bliss as Assistant Coaches. Pat has been a premiership player with North Shore(GFL) and Ocean Grove (BFL) and his experience will be invaluable. Justin wants to coach at senior level and was a Grand Final player and Captain with West St. Peters (GFL).

I must thank Jeff Stewart and Trevor Hume on the great work, which they have done with the Reserves in 1999. Jeff will again be our inspirational leader in the two's with Trevor using his experience and vast football knowledge to make a contribution to the first 21. Training has commenced at the ground on Monday, Wednesday and Friday at 6.30pm. It is very pleasing to see so many new faces who have decided to play with Drysdale. Depth has been a concern in the Reserves team with out Under 18 players filling in many games last year.

With pleasure I welcome the appointment of George Browney as our Under 18 Coach. George has an unmatched record in junior coaching and it is a real coup to have him back at our Club.

Paul Holwell and his team of workers are once again in charge of the Under 15 team. Paul has also taken on a position on the Committee as Junior Co-ordinator. This position covers Under 18, Under 15, YMCA and Auskick, a big task, but with

support from the Club, I am sure Paul will succeed.

Under 15 training will commence on Sunday 30th January at 10 a.m. at the Drysdale Football Ground. The Club wants as many boys as possible playing football, so please tell your mates about the following key points.

The Club plans to field two Under 15 teams this year, one in the Bellarine Football League and one in the West Coast Junior League. We aim to have two highly competitive and successful teams wearing the brown and gold.

Our first training run for Under 15's on Sunday 30th (10.00 - 11.30 a.m.) will be followed by a sausage sizzle for players and parents. This will also be a good opportunity for mums, dads, guardians to meet coaches, support staff and Committee people.

With two Under 15 teams proposed we will also need additional people as coaches and support staff (trainers, team managers etc.). Training will continue on Sundays at 10a.m. and Wednesdays at 5.00p.m.

I would also like to welcome Ashley Patten in his role as Auskick Co-ordinator, a position so important to our Club.

Peter Mannix has taken on the Sponsorship portfolio and I am sure such an important position is in great hands.

I look forward to the 2000 Season with great expectations on and off the field.

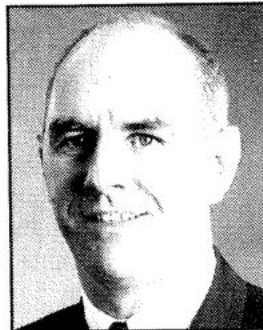
Our Club is part of our community. Our community is part of our Club. If you can help in any way (member, player, sponsor, helper etc.) please contact the Club .

THE YEAR OF THE HAWK

Allan Bliss
President
Drysdale Hawks Football Club



The Professionals



**Phil
Cumming**
AH 5251 3047
018 599 232



**Gabrielle
Beams**
AH 5253 2848
019 430 977

NEW YEAR NEW HOUSE

As the new working year asserts itself after the festivities of Christmas more people are looking to buy and sell property than at any other time of the year.

Statistically more people are making lifestyle changes.

In educational institutions alone, people are taking on new jobs, being transferred, moving closer to their children's school and so on.

Even for those not changing jobs or schools the Christmas

New Year holiday period is a time when people have the leisure time for inspections and the landmark event of the turning year that provides an impetus for long term planning.

Already 2000 is looking set to follow the traditional New Year pattern, and there is the added factor that interest rates and inflation are at an all time low making home purchase more accessible to more people.

Home loan affordability - the ratio of salaries to housing

prices - is very favourable and a great incentive for first home buyers and people trading up.

For those thinking of selling late summer is a great time to capitalise on the influx of New Year buyers in the market.

More buyers means more competition and more chance of a stress-free sale and higher prices.

For a FREE MARKET APPRAISAL please call us on 5251 2847.

Guyett Real Estate P/L

11 Clifton Springs Road, Drysdale

5251 2847