

# The SpringDale Messenger

Your Free  
Community  
Newspaper

Compiled and published by the SpringDale Community Cottage Inc A002916V

Circulation 3,700

Vol 10 No.4, May 2000

## HI HO HI HO IT'S OFF TO SELL BISCUITS WE GO!

If you see some girls in blue uniforms with big smiles on their faces - they're probably Drysdale Guides.

We have a very strong group of girls who are supported by caring and innovative leaders. We cater for girls in the age ranges 5-16+ years in our 3 units. Drysdale Gumnut guides are for ages 5-7+ years, Drysdale Junior Guides are for girls 7-11 years and Drysdale Guides are for girls 10-16+ years.

This year 9 girls aged 13-15 are working towards going to a state camp next January. You will probably see some friendly guides offering you the opportunity to buy some chocolate, cream or plain guide biscuits to help them or their sister guides in this quest. Biscuits are \$2.50 a packet.

Drysdale Guides put out a newsletter once a term, which lets family, and friends know about up coming activities. If you would like to receive this please contact the District Leader, Anne Brackley Phone: 5251 2250. Our Annual Meeting is on Thursday 8<sup>th</sup> June 6.00-7.30pm it should be a fun night for family and friends RSVP Anne Brackley.



**DRYSDALE  
VILLAGE  
HARDWARE**  
**(03) 5251 3267**

YOUR HANDY  
HARDWARE  
STORE

THE ARCADE  
HIGH STREET  
DRYSDALE, 3222.



Bank of Melbourne 

**SHOP 9  
SUPERMARKET  
COMPLEX  
DRYSDALE**

# The SpringDale Messenger

The SpringDale Messenger is compiled by the SpringDale Community Cottage Inc. A0024916V, 14 Princess St. Drysdale. Postal: P.O. Box 80, Drysdale, 3222.

## Advertising and Enquiries: PH: 5253 1960. FAX: 5253 3050

Community Groups, Churches, Sporting Clubs, Service Clubs, etc., are invited to submit details of their future activities for regular inclusion in the Community Diary section, or as articles in the news section as appropriate.

Copy may be typed or printed with a good ribbon (preferred), or legibly handwritten and left at the SpringDale office at 14 Princess St., or posted to P.O. Box 80, Drysdale, 3222.

## Next Publication:

**Copy deadline:**

**12th June, 2000**

## Distribution:

**30th June, 2000.**

**Views expressed in this newsletter are not necessarily the views of the Publisher, the SpringDale Community Cottage Inc.**

## ADVERTISING AND ARTICLES:

SpringDale Community Cottage, Phone (03) 5253 1960.

To ensure publication in a specific issue, copy must be submitted prior to deadline.

Layout and Design of this issue by Pagination Design Services, Geelong.

Ph: (03) 5223 2494

email: [smd@pagination.com.au](mailto:smd@pagination.com.au)

*If visiting the Bellarine Peninsula, drop in for a meal at the*

## DRYSDALE HOTEL

- Friendly atmosphere
- Counter lunches and teas every day including Sunday
- Cosy log fires
- Geelong's first Pub-TAB facilities



LUNCH 12.00-2.00pm - TEA - 6.30-8.00pm

*Your host David Leahy and family*

**High Street, Drysdale. Phone 5251 2301**

*(On Geelong-Portarlington Main Road)*

## Contents

HI HO HI HO IT'S OFF TO	DRYSDALE SENIOR
SELL BISCUITS WE GO! ..... 1	CITIZENS ..... 14
SPRINGDALE BELLARINA	LATEST TRENDS ON
TOY LIBRARY ..... 2	HEP C - A SEMINAR ..... 15
G.S.T. - ADVICE AND	LADIES PROBUS CLUB
GUIDENCE ..... 3	OF BELLARINE INC. .... 15
DRYSDALE -	OBERAMMERGAU ..... 16
CLIFTON SPRINGS ..... 4	WAR REMEMBERED ..... 16
SPRINGDALE COMMUNITY	LOOKING FOR YOUNG
COTTAGE & THE GST ..... 5	PEOPLE ..... 16
SPECIAL RATES AND	PRINGDALE WINE AND
CHARGES SCHEME ..... 6	CHEESE EVENT ..... 16
PORT PIER CAFÉ ..... 7	NATIONAL SENIORS
TRAVELTALK ..... 8	ASSOCIATION ..... 17
The North Bellarine	RURAL AMBULANCE
Community Information	VICTORIA BELLARINE
Supplement Update ..... 10	BRANCH ..... 17
City of Greater Geelong	WHAT'S ON AT CLIFTON
Local Facility Information ..... 11	SPRINGS PRIMARY
WISEGUYS MENS	SCHOOL? ..... 18
HAIRSTYLIST ..... 13	DRYSDALE
IN YOUR GARDEN ..... 13	PROBUS LADIES ..... 18
DAVID PINNEY'S	SPRY APPLAUDS CFA
PHARMACY ..... 13	VOLUNTEERS ..... 18
BELLARINE JESTERS ..... 14	THE MIGHTY HAWKS ..... 19
BELLARINE JONGLEURS .. 14	RENT Vs BUY -
	THE QUICK FIX PARADOX 20

## SPRINGDALE BELLARINA TOY LIBRARY

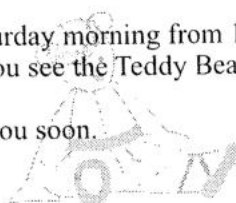
**The holidays are coming, The holidays are coming !!!!!**

**Grandparents and Holiday Baby-sitters** take note: Are you ready for the Holidays, with a house full of children unable to go outside to play? Then let us help. The Toy Library is a very effective way to have access to over 140 toys and 80 puzzles, suitable for children up to 6 years old, for a very minimal outlay. **Mums and Dads** - add to your own collection of toys and puzzles with what we have.

There will be something to help keep your child amused from just \$10.00 **for the rest of the year.** (New Members pay an additional \$20.00 once-off Registration Fee).

We are open each Saturday morning from 10.30-11.30 at SpringDale Community Cottage, where you see the Teddy Bear sign.

Look forward to seeing you soon.



SpringDale  
Community Cottage  
Bellarina Toy Library

## G.S.T. - ADVICE AND GUIDENCE AVAILABLE IN YOUR AREA.

The Geelong Area Consultative Committee has received funding from the Federal Government to appoint a GST Signpost Officer to act as a local information source for small and medium businesses, community groups and education bodies on GST related issues.

GST Guidance is now available free of charge to small business in the Geelong Region following the appointment of GST Signpost Officer Mr. John Williams. A Former Drysdale resident and small business operator, John is available to assist on GST related issues.

John commenced in the role by attending an intensive training course in Canberra with the GST Start up Assistance Office, the Australian Taxation Office and the office of the Australian Consumer and Competition Commission.

Figures from the Australian Taxation Office released on 1<sup>st</sup> May 2000 indicate that of the 2.2 million small businesses registered in Australia only 1.4 million have applied for an ABN (Australian Business Number). The Australian Taxation Office has guaranteed that if you apply for an ABN before 31<sup>st</sup> May 2000 you will be registered on 1<sup>st</sup> July 2000 when the GST is introduced.

Small business operators are urged to apply for their ABN as soon as possible (electronic applications via the Internet or their Tax Agent are currently being processed faster than paper applications). When you receive your ABN you will also receive a \$200.00 certificate to enable you to offset some of the costs associated with making your business GST compliant. This voucher is only valid until the 30<sup>th</sup> June 2000; you should therefore apply for your ABN now. If you are a small business you claim credits for wholesale tax paid on stock on hand at 30<sup>th</sup> June 2000, but only if you are registered for the GST and have an ABN.

Information is also available for small business and other organizations on record keeping, Business Activity Statements, invoicing under the GST, withholding tax or the role of the ACCC (Australian Competition and Consumer Commission). The Geelong Area Consultative Committee GST Signpost Officer can be contacted on 5228 6288 or 0417 160184.

## NOTICE OF MEETING AN OVERVIEW OF G.S.T.

presented by  
**DRYSDALE - CLIFTON  
SPRINGS  
COMMUNITY  
ASSOCIATION  
&  
SPRINGDALE  
COMMUNITY  
COTTAGE Inc.**

Thursday 15<sup>th</sup> June, 2000  
7 p.m. Sharp.

Drysdale Fire Brigade Rooms.  
Princess Street,  
Drysdale.

**GUEST SPEAKER:**  
John Williams  
Australian Taxation Office  
G.S.T. Implementation for Business

**R.S.V.P.**  
SpringDale Community Cottage.  
Phone: 5253 1960.  
By 13<sup>th</sup> June, 2000.

**Kerry's  
Nail Elegance**

**Acrylic or Gel Nails!**

Gel looks so natural & is gentle on your nails!

"I use sterilised equipment and provide a relaxed environment for my clients."

By appointment only.  
**Ph: 5253 3107**

Just a short drive from Drysdale shops.  
Amarina Rd Clifton Springs, Melways map ref 238 E.7.

**ANN BURLEIGH**  
ND. Dip. Hom. Dip O.T.  
**HOMEOEOPATH**  
**NATUROPATH**

Women's Issues, Nutrition, Immune Disorders,  
Chronic Fatigue, Acute/Chronic Conditions,  
Natural Fertility, Reiki, Mora Therapy.

**LEOPOLD**  
**PHONE: 5250 4686**

# DIZZY TOYS

## !!!! RED BALLOON SALE !!!!

**Starts THURSDAY 1<sup>st</sup> JUNE**

Specials!!! SPECIALS !!! and **MORE SPECIALS !!!**

**WINNIE BACKPACKS/BAGS FROM \$19.95!!!**

**!!! BARGAINS FROM ONE DOLLAR !!!**

CHILDREN'S PARTIES: Fairy, Glamour, Winnie and Wizard!!!  
(Pick up info' sheet from shop)

Eftpos Available, Laybe Welcome.

Shop 18, Village Walk Shopping Centre, 19-21, Clifton Springs Rd., Drysdale, 3222.  
Ph/Fax: (03) 5251 1009 Mob: 0412 866823



**DRYSDALE - CLIFTON SPRINGS  
BUSINESS GROUP  
A Sub-Group of  
THE DRYSDALE - CLIFTON SPRINGS  
COMMUNITY ASSOCIATION**

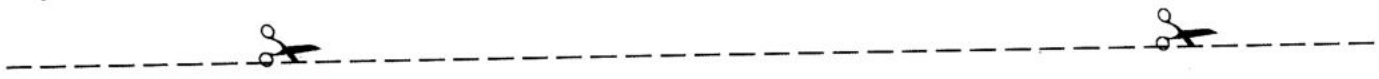
SpringDale Community Cottage is in the process of setting up a current DataBase, similar to The Community Information Supplement. It is a new endeavor in the area and the aim is to make it easier for contact and support groups to reach a wider population in this fast growing local region.

It will also assist SpringDale in the planning and establishment of Small Business courses such as M.Y.O.B. - QUICKEN - FOOD HANDLING and other business oriented courses that can be delivered in a local environment to support Local Needs.

Once established the database will be available to disseminate information to members of The Business Group.

The recent Pioneer Day - A Millennium Event - in April was a success as it attracted many people not only from the local area but also from Melbourne and Geelong proper, to the town. The advertising on Melbourne radio as well as other media coverage gave the area a higher profile. This event was also sponsored by "The Villages of Bellarine Project" supported by the State Government, The City of Greater Geelong and The Borough of Queenscliff. The Drysdale - Clifton Springs' membership of this project is due to the ongoing work of The Drysdale - Clifton Springs Community Association Working Group and SpringDale Community Cottage Inc.

If you would like to have your Business listed in the new Data Base please fill out the following form and return it to SpringDale Community Cottage, 14 Princess Street, Drysdale. Or P.O. Box 80, Drysdale 3222.



**BUSINESS:** .....

**NAME OF CONTACT PERSON:** .....

**ADDRESS:** .....

**PHONE NO:** .....

Please contact Lisa Elliot - 5251 2776 or SpringDale 5253 1960.



# SPRINGDALE COMMUNITY COTTAGE & THE GST

Just as you are all struggling with the GST so to Springdale Community Cottage.

At this stage we are still uncertain about the extent of the impact the GST will have on our services.

## The GST will not apply to the following services:

Our Childcare services which include occasional care and our kinder program.

Any of our fundraising

## The GST will apply to the following services

Advertising costs in the Messenger.

## Services that may be affected by the GST

Membership fees

Class fees

Use of photocopier

Toy Library

Playgroup

Donations & Funding Grants

These areas still need clarification by the Government and the Tax Office. In relation to our classes we await a decision by the Education Minister about which classes will be exempt from GST. We have been informed that this decision may not be made prior to the 1<sup>st</sup> of July. If this is the case Springdale Community Cottage will be forced to charge a 10% GST fee on our classes. If they later become exempt we will then provide a refund. We will keep you informed of what services will be subject to the GST and which will be exempt.

## CAFÉ A BICA

Eat in or Take-away

Morning & Afternoon Teas  
Light Lunches & Snacks

Freshly Ground Coffee & Twining's Teas  
Cakes, Slices, Raisin Bread & Homemade Muffins

Cake & Cappuccino \$3.50

Homemade Quiche, Lasagne & Burgers  
Pies, Pasties, Chips, etc.  
Fresh Sandwiches, Rolls & Focaccias Made to order.

Opening Hours: Mon - Fri 9-5 Sat 9-2

Drysdale Village Shopping Centre,  
Opposite Safeway

Phone: 5253 1200

## CARROLL'S WOODCRAFT SUPPLIES

66 Murradoc Road, Drysdale 3222  
Ph: 03 5251 3874 Fax: 03 5251 3864  
E-mail: carrolls@pipeline.com.au

CRAFT SUPPLIES.  
MACHINERY & HAND TOOLS .  
WOODTURNING & CARVING &  
PYROGRAPHY (WOODBURNING) TUITION.  
PRODUCTION AND ONE OFF TURNING.  
SAW SHARPENING SERVICE.  
POWER TOOL REPAIRS.



Lynette's  
User-Friendly  
Computers

Personalised  
Tuition & Training

Ph: 5259-3963

P.O. Box 112, Portarlington:3223

Serving the Bellarine Peninsula

## Somerset Gallery

Antique Furniture and collectables.  
Featuring paintings by local artists.  
Craft, cards and writings by local artists  
Open every day except Tuesday and Wednesday.  
Geelong Rd, Drysdale opposite Lake Lorne.  
10.a.m to 4.30p.m

## The Portable Palette

Kate Brewster  
0418 329 065

WEEKLY DRAWING CLASSES

Where: The Torquay Scout Hall (Mel ref: 237 F6)  
Or The Drysdale Community Hall.

When: Torquay - from 1pm to 3pm Wednesdays  
Drysdale - from 10 - 12 noon Mondays.

Cost: \$15 per person B.Y.O Paper & Pencils

Includes: Relaxing Music, Fun and Friendship.

To book your place please call 0418 329 065

MOBILE ART TUITION

NO APPOINTMENT  
NECESSARY

PENSIONER &  
STUDENT DISCOUNT



ALL LADIES SERVICES AVAILABLE ALSO.

Shop 3/21, Clifton Springs Rd. Business Hours  
Village Walk. Behind the Post Office, Drysdale. Mon-Fri. 9am-5pm  
Thursday 9am-7pm  
Saturday 8am-12noon  
Phone: 5253 1108

## Salvation Army Family Stores

Mortimer St. Drysdale

Ph. 5251 2475

Plenty of Bargains

The Place to Shop

Come and see us We are here to Help You

## BELLARINE AUTO SERVICES

Quality Mechanical Repairs

Tuning - Servicing

LPG Conversion - EFI

Tyres - Batteries - RWC

Licensed Vehicle Testers

Mortimer St. Drysdale

Proprietor: J. Pamplin

Ph. 5253 1644

# SPECIAL RATES AND CHARGES SCHEME

There has been a lot of discussion in the community recently about Council's Special Rates and Charges Schemes. While there has been some coverage of the issue in the local press it is important to remember some key points about the Scheme.

The construction of some roads in the municipality is carried out under the Special Charge provisions of Local Government Act 1989. This legislation, that Council must adhere to, was enacted by the Cain - Kirner State Labor Government's to cover construction of unmade private streets. The City of Greater Geelong exists under and is bound by the provisions of The Local Government Act.

Council has developed its Comprehensive Infrastructure Funding Policy to assist in applying this legislation in a fair and equitable manner. An underlying premise is that it is unfair that people who've paid for fully serviced properties should also pay for improving the value of cheaper unserviced land owned by others.

Recognising this, Council does provide special consideration for people faced with genuine hardship. It should be remembered that members of the community generate Special Rates and Charges Schemes. Council sets up Schemes relating to specific streets when requested to by residents and part of the cost is then borne by them.

Most importantly, any resident who does not agree with the Scheme or how it impacts on them is able to lodge a submission in opposition to it and also appeal the decision by Council to proceed if it reaches that stage.

Another very important issue in the community is the drug problem. Council has been very active in approaching this issue and recently announced the formation of the Geelong Drug Advisory Committee.

The Committee has representatives from over 20 community groups and service agencies. Its aim is to reduce the level of crime and harm resulting from drug related activity. As residents living on the Peninsula, we have to remember that this issue is not confined to the city and consequently Council recognises that any initiatives need to take in all regions within the municipality.

In other news around the region, major construction works on the new Bellarine Multi Arts Centre is about to get underway. I along with others in the area look forward to the day when we can all utilise this fantastic community asset. Council is very pleased to have been a driver of this project in partnership with Bellarine Secondary College, Catholic Regional College and the State Government.

Keeping an eye on the time is a lot easier following a \$1,000 contribution

from Council to the Bellarine Historical Society for the restoration of its clock. Congratulations to all who took the time out to share in the activities on Pioneer Day recently in Drysdale. It was a great community day with many people chipping in to make it happen.



Cr. Rob Binnie,  
City of Greater Geelong.  
P.O. Box 104.  
Geelong. 3220.

## NEEDLE SYRINGE PROGRAM

Are you using drugs?  
If so, then protect yourself from HIV and Hepatitis C.

Obtain clean fits from the Drysdale Community Health Service  
21 Palmerston Street, Drysdale.

**A CONFIDENTIAL service.**  
**No questions asked.**

## BELLARINE CHRISTIAN BOOKS and RESOURCES



- Cards
- Books
- Bibles
- Gifts
- CD's, tapes, videos
- Non-alcoholic wines

Shop 2, 6 High Street, Drysdale.  
Ph: (03) 5251 3491 Fax: (03) 5251 3495

MAXIMUM RATE

**7.50%**  
PER ANNUM

Dennis Blake



Ask about our special offer

**PH 5229 4903**  
First Floor, 257 Moorabool St, Geelong

*Your easy, low cost way to invest*

Please send me details of your services and a copy of the current prospectus

Name: \_\_\_\_\_

Address: \_\_\_\_\_

Postcode: \_\_\_\_\_ Ph: \_\_\_\_\_

Applications for investment must be on a form attached to a current prospectus.  
Australian Pensioner Advisory Services Pty Ltd. ACN 007 427 974 Holder of dealers licence number 88176.  
Visit our Website: [www.apas.com.au](http://www.apas.com.au)



**Australian Pensioner Advisory Services Pty Ltd.**

*"Helping Australians invest wisely"*

# PORT PIER CAFÉ

## SPANISH CUISINE

The taste of Spain is now in Portarlington. The unassuming former Portarlington Kiosk has been transformed into an authentic Spanish restaurant deceptively named "Port Pier Café". To enjoy magnificent Spanish fare made from the freshest of local produce do not miss out on what the chef's Xení and Vicente have to offer from their homeland.

Every dish is unique and the menu is continually changing. Meals vary from a tantalising selection of "Tapas", magnificent fish dishes, the ever-popular Paella and not to forget the locally grown mussels, direct from the "Portarlington Pier to your Plate". The desserts are mouth-watering and the coffee full flavoured.

The building is positioned only metres from the waters edge and every seat, both indoor and out has been arranged to take full advantage of the endless views across the Bay.

Treat yourself to a real meal experience or simply enjoy a cold beer or select a wine from the popular wine list while relaxing and enjoying the North facing views across Port Phillip Bay and its surrounds.

Port Pier Café is open Friday to Sunday from 10am for breakfast, lunch and dinner and Thursday from 6pm.

Bookings are strongly encouraged. Private functions are also welcomed and a set menu can be arranged.

For bookings and inquiries please phone 5259 1080.

The taste of Spain has now come to Portarlington



## Port Pier Café Spanish Cuisine

Discover the Port Pier Café  
Sited alongside the spectacular  
Portarlington Pier, with endless panoramic  
Views of Port Phillip Bay.

*Enjoy authentic Spanish meals in a relaxed  
And welcoming atmosphere.*

\* Ever popular paella \* Spanish tortilla  
\* Tapas \* Fresh locally farmed  
Mussels cooked in a variety of salsas

### GROUP BOOKINGS ENCOURAGED

Set menus available for special occasions

For further enquires please call:  
**(03) 5259 1080**

6 Pier Street,  
Portarlington Foreshore Vic



**18-20 HIGH ST. DRYSDALE.**  
**OPEN 7 DAYS A WEEK**  
November to April: 10am - 5pm  
May to October: 11am - 4pm  
All Public Holidays except Good Friday and Christmas day.  
New Members always Welcome

For  
Hairdressing  
in your own home..  
**GLORIA BROOK**  
Pension & Family Discounts  
Ph: 5251 3891  
Mobile 0417 103 661

## Robert Tucker Piano Services C/- Tuckerberry Hill.

Qualified Piano Tuner  
and Member of Piano Tuners and  
Technicians Guild of Australia.  
Tuning, Regulation,  
Restoration and Repairs.

Phone: 5253 3438

# INSTYLE BLINDS

QUALITY BLINDS AND CURTAINS  
AFFORDABLE PRICES

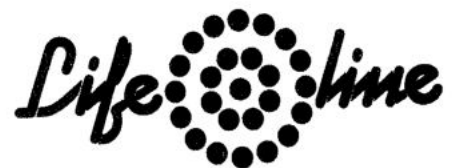
## OUTSIDE AWNINGS

(Free measure & Quotes      Shop-at-home service)

- Venetian Blinds
- Vertical Blinds
- Pleated Blinds
- Holland Blinds
- Awnings
- Drapes
- Repair & Maintenance Service

Unit 2/31 Murradoc Road, Drysdale 3222.

Ph: 5251 1195



Lifeline Shops have a wide range of all the following items



Our stores are located at:

16 Gordon Avenue	Geelong West	5229 8765
152 Bellarine Highway	Newcomb	5248 3800
19 Murradoc Road	Drysdale	5253 2168
5/2A Gordon Avenue	Geelong West	5222 6418

(Furniture at 5/2A Gordon Avenue only)

**LIFELINE ALSO SELL INDUSTRIAL RAG  
RING 5222 6418 FOR A PRICE**



# TRAVELTALK

by Carol McCarthy

When the 4 Star cruise ship Norwegian Star departs Sydney for a 10-night South Pacific cruise on 15<sup>th</sup> July, it will be a case of bon appetit as well as bon voyage.

The departure, the day after France's annual Bastille Day celebrations, will salute classic French cuisine along with wines from France's famous wine regions. It will be 10 days of non-stop fine dining culminating in a gala dinner of gourmet food and wine. Jean-Mark Larrue who owns his own restaurant in Provence will be flown in and will prepare delectable dishes for passengers and conduct French cooking classes. The focus will be on Provence as well as Alsace, Bordeaux and Normandy areas. He will also conduct Patisserie and Confiserie Classes, which will include the making of some typical French treats to serve with coffee.

The wines of France are also being featured and Australian wine expert,

Rob Hicks, will choose vintages to match certain foods. He will demonstrate the diversity of French wines in all styles.

Leading cheese maker, Laurie Wilson will feature the Cheeses of France and Melbourne food author and chef, Tamara Milstein, will demonstrate the making of traditional French baguettes and other specialty breads of France.

Prices start from only \$1799 per person twin share. The cruise includes all meals, accommodation, entertainment, and use of the ship's facilities and tips, with an optional Food & Wine package cost of \$285 per person.

The cruise will visit Noumea, the Isle of Pines, Champagne Beach and Vila. Special shore excursions will follow the French theme with a lunch in Noumea at 'L'EAU VIVE', a restaurant run by nuns and at Le Meridien Hotel in Vila.

For more information contact Harvey World Travel in Drysdale on 5251 1125.



## HARVEY

world travel

The Travel Professionals

### YOUR LOCAL TRAVEL AGENT

- local tours
- international and domestic flights
- coach tours
- package holidays
- travel insurance

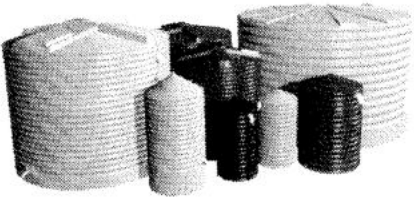
SHOP 2A  
6 HIGH STREET, DRYSDALE.  
TELEPHONE: 5251 1125  
MOBILE: 0417 129702

Drysdale

Your One Stop Plumbing Shop.

## Plumbtec

Bathroom Kitchen & Plumbing Supplies



PH: DRYSDALE 52531268 GEELONG 52221268  
TANKS FOR DRINKING WATER & GARDENS

# RECORD SALES

Due to record breaking sales over recent times we are desperately short of listings in all price ranges.

As a result, we have many inquiries from potential purchasers who are still waiting to buy.

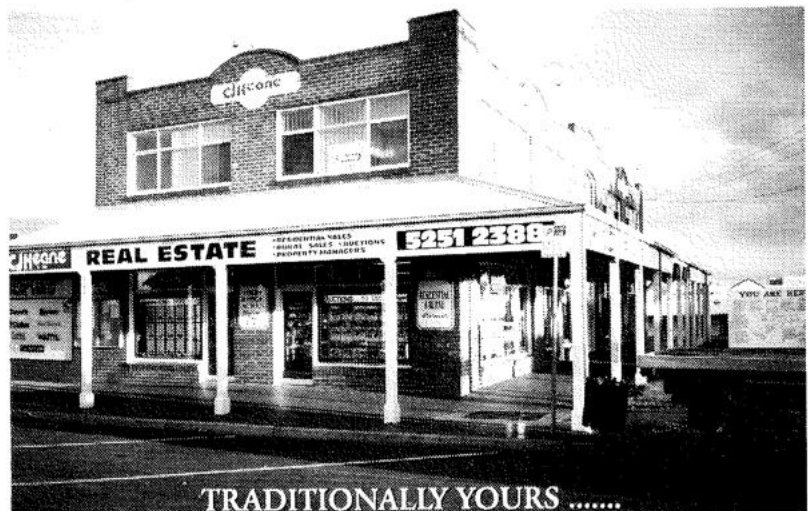
We need your home to sell urgently!

If you have been considering selling your property **NOW** is the time to list it for sale while prices are good and buying inquiry is strong.

**C.J. Keane & Co.** boasts an eleven office network servicing the Bellarine Peninsula, Geelong & the Surf Coast. We offer 7 days a week service from sales staff who are part of the local community.

**C.J. Keane & Co.** are active members of the Geelong "Smart Move" campaign.

Contact us today for a free and confidential appraisal on your property.



... For more than 60 years C.J. Keane & Co has helped local residents buy and sell homes. We know your neighbourhood and what is Happening with property values. If you think That experience counts, give us a call ...

# CJKeane

& CO.

## 5251 2388



# SWAN BAY CATCHMENT GRANTS

The Swan Bay Integrated Catchment Management Committee Has funding to assist private landholders within the Swan Bay Catchment to fence and re-vegetate waterways with indigenous Plants and protect remnant vegetation.

**Opportunity closes soon.**

For further information and/or an application, contact the Swan Bay Catchment Officer, **phone/fax 52 298432.**



**DRYSDALE TIMBER-**  
Ultimate Hardware

**Stockists of:-**

Timber/Handyman & Builders, Hardware, Specialists in Paint with a Colour, Consultant on hand, New Nursery, Large range of Garden Supplies, Stock Feed.

We supply everything you may need for inside and outside your home.

**PH. 5251 2852**  
**OPEN 7 DAYS**  
**LOT 1 MURRUDOC RD.**  
**DRYSDALE.**

# FLEA BUSTERS



**MOBILE  
DOG  
WASH**

**Clipping, Bathing  
& Grooming**

"A complete service  
by the true Professionals".

**5281 1711**

Professional Service For All Breeds At  
Your Own Home

# OPEN DAYS AT CRC

**ENROL NOW FOR 2001**

<b>ST THOMAS CAMPUS</b>	<b>JUNIOR CAMPUS</b>	<b>SENIOR CAMPUS</b>	<b>GEELONG</b>
<b>DRYSDALE</b>	<b>GEELONG</b>	Year 10-12	
Year 7-12	Year 7-9	27 Fenwick Street	
Peninsula Drive	150 Yarra Street	Mr Joe Napoli Ph: 5221 5170	
Mr. Michael Exton	Mr Joe Napoli		
Ph: 5251 1050	Ph: 5221 3244		

LARGE ENOUGH  
FOR OPPORTUNITY  
- SMALL ENOUGH  
TO CARE

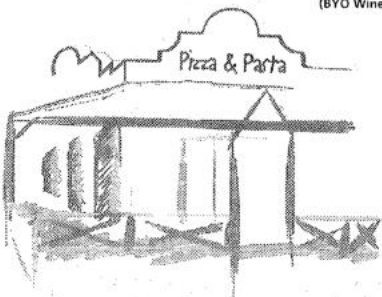
Academic Entrance  
Scholarships for Year 7  
Closing date: May 12  
Scholarship Test: May 20



**CATHOLIC REGIONAL COLLEGE**  
GEELONG'S ONLY CATHOLIC CO-EDUCATIONAL COLLEGE  
www.crc.vic.edu.au E-mail: Info@crc.vic.edu.au

Drysdale Village  
**Pizza  
Pasta**  
Restaurant

Fully Licensed  
(BYO Wine Only)



**Telephone 5251 3937**

Inquire within for our latest Delivery Specials  
**Open 7 Days A Week**  
Dine-In • Take-away • Home Delivery  
Shop 7/26 High Street Drysdale

Home Deliveries to  
Drysdale • Clifton Springs • St Leonards • Portarlington • Leopold

# DRYSDALE &

# PENINSULA FUNERAL SERVICES

**Drysdale and the Bellarine Peninsula now has  
its own locally owned funeral directors.**

- Personalised experienced staff to meet the individual needs of families
- Chapel and carparking facilities
- Pre-arranged funerals
- Pre-paid funerals
- Catering.

**24 HOURS A DAY - 7 DAYS A WEEK**

**PHONE: 5251 3477**

**1 HIGH STREET, DRYSDALE.**

# The North Bellarine Community Information Supplement Update

## DELETE/REMOVE

---

### RESCUE

**Bellarine Rescue Squad,**  
104 Fenwick Street,  
Portarlington. 3223.  
Phone: (03) 5259 3743

### RIDING CLUB

**Bellarine (Christian) Riding Club,**  
219-223 Jetty Road, "Bethbirri",  
Clifton Springs. 3222.  
Contact: Mary Dowd - President.  
Phone: (03) 5253 2424  
Fax: (03) 5251 3191.

### Dance

**Clifton Springs Bowling Club,**  
Springs Street,  
Clifton Springs. 3222.  
Dance Second Saturday of each month.  
Contact Person: Ian Stepnell.  
Phone: (03) 5251 3754.

## UPDATE & INCLUDE

---

### ACCOMODATION - AGED

**Bellarine Peninsula Elderly Peoples Home Inc.**  
Lions Village, Gellibrand Street  
Portarlington. 3223  
Contact: Secretary (03) 5259 2684

### CRAFT

**Craft Shop Drysdale,**  
High Street, Drysdale.  
Phone: (03) 5251 1605

### CITY OF GREATER GEELONG

**Family DayCare.**  
P.O. BOX 104,  
Geelong. 3220.  
Phone: (03) 5227 0805

### COUNTRY WOMEN'S ASSOCIATIONS

**Portarlington. CWA,**  
RSL Hall, Cnr. Harding & Fenwick Sts,  
Portarlington. 3223.  
Phone: Eileen - Secretary  
(03) 5259 3541  
Esma - President (03) 5259 3070  
New members and visitors welcome.

### GUIDES

**Portarlington Guides**  
71 The Esplanade  
Portarlington. 3223.  
Contact Person: Sylvia Le Marquard  
Phone: (03) 5259 2827

### Drysdale Guides

1485 Portarlington Road  
Drysdale. 3222.  
Contact Person: Anne Brackley  
Phone: (03) 5253 1057

### JUSTICES OF THE PEACE

**Patricia Bell**  
4 Queenscliff Road  
Portarlington. 3223  
Phone: (03) 5259 2684

### MARKETS

**Drysdale.**  
Drysdale Reserve, (Football Reserve),  
P.O. Box 298,  
Drysdale. 3222.  
Phone: (03) 5251 2642  
Craft Market held every 3<sup>rd</sup> Sunday  
Of each month (October-May).

### PARLIAMENTARY REPRESENTATIVES.

**Garry Spry, MLA**  
Member for Bellarine  
Shop 1, Newcomb Central,  
71 Bellarine Highway,  
Newcomb. Vic. 3219.  
Phone: (03) 5248 3462.

### PLAYGROUPS

**Clifton Springs Playgroup Inc.**  
P.O. Box 302, Drysdale. 3222.  
Contact Persons:  
Melinda Lomas - President  
(03) 5253 3113  
Simmone Fuller - Secretary  
(03) 5253 1370

### SCOUTS

**1<sup>st</sup> Portarlington Scout Group,**  
P.O. Box 130,  
Portarlington. 3223.  
Scout Hall - Cnr. Newcombe &  
Harding Streets, Portarlington.  
Contact: Dave Douglas -  
Groupleader Phone:  
(03) 5259 2606  
Fax: (03) 5259 2161

### SERVICE CLUBS

**Lions Club of Portarlington-Drysdale Inc.**  
P.O. Box 402,  
Drysdale. Vic. 3222.  
Contact Person: Adrian E. Mannix  
OAM  
Phone: (03) 5251 2257

### SPORT - Gymnastics

**Portarlington Gymnastic Club Inc.**  
Parks Hall, Newcombe Street,  
Portarlington. 3223.  
Contact Persons:  
Danielle (03) 5259 1399  
Vicki (03) 5253 1004

### VETERANS

**Portarlington RSL,**  
Phone: (03) 5259 1055.

### Geelong Legacy Laurel Club - Bellarine Group

2 San Fernando Avenue,  
Portarlington. 3223.  
Contact: Eileen Sharp - President  
Phone: (03) 5259 3541.  
Rhoda - Secretary  
Phone: (03) 5251 2681  
Meets 2<sup>nd</sup> Wednesday at the RSL  
Hall, Portarlington at 10.30am.

### Portarlington/St. Leonards Womens RSL Auxiliary.

Meets at RSL Hall Portarlington the  
1<sup>st</sup> Monday of the month at 10am.  
Contact Persons:  
Eileen - President (03) 5259 3541  
Pat - Secretary (03) 5259 3823  
New Members Welcome.



# City of Greater Geelong Local Facility Information

## AQUATIC CENTRES

**Clifton Springs Pool** PH: 5253 2622  
Springs Street, Clifton Springs  
Melways Ref: 238 E4  
**Splashdown** PH: 5248 4555  
Coppards Rd, Whittington  
Melways Ref: 231 C8

## CHILDCARE CENTRE LOCATIONS

**Drysdale** PH: 5227 0791  
15 - 19 Eversly Street  
Melways Ref: 238 F9  
**Newtown (Ariston)** PH: 5227 0720  
245 - 249 Pakington Street  
Melways Ref: 228A A4  
**Whittington (The Link)** PH: 5227 0796  
19 Worden Court  
Melways Ref: 231 A8

## CITY OF GREATER GEELONG

**General Inquiries** PH: 5227 0270  
**Councillors 1998 - 2001** PH: 5227 0893  
FAX: 5227 0275

All correspondence to Councillors can be forwarded to:

City of Greater Geelong  
P.O. Box 104, Geelong. 3220.

### Customer Service Centres:

(All centres are open from 8 a.m. - 5 p.m. Monday to Friday, unless otherwise stated.)

**Drysdale** PH: 5227 0527

18 - 20 Hancock Street, Drysdale  
Melways Ref: 238 F9

(Office shared with Library)

This centre also operates as a VicRoads Agency.

**Geelong** PH: 5227 0270

City Hall, Cnr Gheringhap & Lt. Malop Sts  
Melways Ref: 228A F4

This centre also operates as a VicRoads Agency

**Ocean Grove** PH: 5256 1311

The Grove Centre, Cnr. Presidents Ave & The Avenue  
Melways Ref: 234 B6

Open 8:30am to 5.00pm

(Office shared with Community Health).

## FAMILY DAYCARE - AREA SUPERVISOR CONTACT NUMBERS

**Geelong Central/East/South/  
Newcomb/Whittington** PH: 5227 0787  
**Portarlington/Drysdale/  
Clifton Springs/Leopold/Moolap** PH: 5227 0786  
**Ocean Grove/Drysdale/  
Barwon Heads/Queenscliff** PH: 5227 0785

## GARBAGE COLLECTION SERVICE INFORMATION

You are allowed to put out 3 bins or 3 bags of rubbish per residential property. These must be placed out on your nature strip by 5 a.m. on the day of collection. To find out your collection day please attend a Customer Service Centre or phone the Council general inquiries phone number - 5227 0270

**Drysdale/Clifton Springs** ..... FRIDAYS  
**Portarlington** ..... MONDAYS  
**Indented Heads** ..... MONDAYS  
**St Leonards** ..... MONDAYS

## WASTE DISPOSAL CENTRES (PUBLIC)

**Drysdale Waste Disposal  
& Recycling Centre** PH: 5251 2935  
Becks Rd, Drysdale.  
Melways: Key Map 15.  
Open Daily 8.00 a.m. to 4.30 p.m.  
Closed Christmas Day & Good Friday.



# Feeling Troubled?



Explore solutions! Be self renewed!

## Counselling (For all ages & Issues)

*\*Confidential \*Skilled \*Relaxed \*Personal*  
A changed life begins with one small step!

**Phone: 5253 3060 Today!**

*(Fees negotiated according to Income)*

*Situated: 219-223 Jetty Road, Crn. Cowies Road, Drysdale, Bellarine Peninsula, Vic. 3222*

## ROCKET'S DRIVER TUITION



**INSTRUCTOR - ROD SCHAMMER**

(13 years licence tester with VicRoads, Instructor Since 1979)

EXPERT TUITION AT A REASONABLE COST  
MANUAL & AUTOMATIC VEHICLES  
STUDENT & PENSIONER DISCOUNTS APPLY  
GIFT VOUCHERS ARE AVAILABLE

PHONE: 5253 3140

OR 0419 802 679

# Trees for Life

A natural memorial in the heart  
of the Bellarine Peninsula

A special way  
to honour a  
family member  
or friend



130 Bellarine Highway, Newcomb

Ph: (03) 5251 3626 all hours

[www.hepner.com.au](http://www.hepner.com.au)



*Quality Butcher*

PETER HOMMELHOFF

**HOMMY'S**

**QUALITY MEATS**

*For something new and different*

16 High Street, Drysdale 3222.

Phone: 5251 2270

## DRYSDALE CARPET COURT

CARPET - VINYL  
CERAMIC TILES  
FLOATING WOOD  
LAMINATE FLOORS

Proprietor: Neil Petrie

Phone: 5253 1855 Mobile: 0419 519 030  
63 Murradoc Road, Drysdale.

## HOMES & LAND WANTED.



We urgently need homes And land to sell  
to our list Of unsuited buyers. If you Are  
considering selling Contact me for assistance  
And professional advice

*Trevor McArdle*  
*Managing Director.*

## THINKING OF BUILDING?

**HOTONDO**

Bayshore First National have been appointed  
sole marketing agents for this exclusive  
range of award winning affordable homes.  
Call in for plans & prices

*Investment packages*  
*Available*



**Bayshore** FIRST NATIONAL  
REAL ESTATE

26 High Street, Drysdale. Telephone 5251 2610

## SOLICITOR & CONVEYANCING

Basil Ristevski LL.B

**5251 3453**

## CARPET STEAM CLEANING

MARICK CARPET CLEANING  
DICK BOLAND

Ph 5259 2217

Mobile 0412 517 065

Carpets, Lounge Suites  
Car Upholstery Stain Guard Available  
FREE QUOTES

# WISEGUYS MENS HAIRSTYLIST

WiseGuys Mens Hairstylist has been providing mens and boys haircuts in Drysdale for 7 years now.

Our success has come because of our quality haircuts in traditional and modern styles and friendly service. Prompt service and reasonable prices are what we strive for.

No appointment necessary means you can get your hair cut when it suits you with no or minimum waiting.

As an added service we will come to your home if you are ill or injured and can't get to us to make it as easy as possible for our sick or elderly clients.

Stan, Wendy and Manfred are all highly qualified with years of experience in Mens Hairdressing.

There is no comparison to **Great Service with a Friendly Smile.**

Phone: 5253 2503

## SHIATSU THERAPIST

Dip Shiatsu & Oriental Therapies  
Member STAA

**Jennie Urquhart**  
Phone: 5250 2984



WISE GUYS  
MENS HAIRSTYLIST  
"Its the cut that counts"

So come and see  
Stan, Wendy, Manfred  
for all mens and boys styling  
\* STUDENT AND PENSIONER \*  
DISCOUNTS

No appointment necessary

Shop 1,  
Wyndham  
Street,  
Drysdale.

5253 2206



# IN YOUR GARDEN

It's official, Winter is nearly here! The joys of a hot fire, lots of rain and of course bare rooted roses and fruit trees. Yes, everybody looks forward to Winter, if you believe that then you will believe anything. There are merits to Winter but sometimes you have to look fairly carefully. Bare rooted roses and fruit trees will be hot property this June because come July they will go up 10% as a result of the good old GST. Nasty little three-letter word that it is. So if you are planning bare rooted planting's, then earlier rather than later may well save you some money. There will be lots of varieties of roses and fruit trees available and any special requests can usually be accommodated. If you are not quite ready to plant then make sure the area you are planting is. It needs to be well dug over with a dollop or two of manure, horse or cow is good stuff. Chicken poo does not come in a dollop and should only be used sparingly

in the hole when planting bare rooted plants. In a windy spot, the odd stake or two can mean that the tree you plant will start off straight instead of on a lean a purely aesthetic thing.

June is getting towards the end of the time to plant your bulbs, so if you are going to then do! Any bulbs that have not been planted should find there way to the ground somewhere quite soon or you risk losing them altogether. Lots of bulby things that have been planted in early Autumn are already up, so they will have a good head start on the late ones, possibly prolonging your flower display.

Neil Muhlhan

Alinga Nursery

## DAVID PINNEY'S PHARMACY

Find out how **WEAK or STRONG** your bones are before they break.

**BONE DENSITY TESTING** at David Pinney's Pharmacy on 2<sup>nd</sup> June. Phone Sue for appointment. Phone No. 5251 3298.

Clifton Springs  
GOLF CLUB

Clearwater Drive,  
Clifton Springs. 3222.  
Ph: 5251 3391 Reg: A0006439X

*Play By The Bay*

- Golfing membership now available
- Social groups & Trade days welcome
- Golfing Tuition available
- Meals available 7 days/nights with Chef Neill Sharer (bookings essential)
- Live entertainment
- Tabaret Venue - 40 machines, latest games

**Your complete entertainment venue**

**For bookings and further information  
Telephone the Club on 52 513391**



## BELLARINE JESTERS

### ROOM 22

Directed by Maggie Taylor  
Rehearsals for ROOM 22 are going very well with all the cast very enthusiastic. It is the very funny story about two elderly spinsters who run a down in the mouth Hotel in Far North Queensland, with four very strange guests who seem both secretive and a little mismatched and both couples are named Smith and not to mention the strong hotel staff

### SORRY WRONG NUMBER

Directed by Barbara Reeves  
Rehearsals are going very well with the show almost upon us. SORRY WRONG NUMBER is a drama about a woman who is sick and confined to bed who overhears a murder plot and her desperation in trying to locate her husband or at least find someone who can help her

SHOW DATES: June 14<sup>th</sup> - 16<sup>th</sup>.  
St. James Hall, Collins Street,  
Drysdale.

### TICKETS

To book your tickets ring Ros Hickey on 52 504322  
Tickets are \$8.00  
Deborah Williamson

## Linda Stephens' Hairdressing

60 Buccleugh St., Drysdale

### BY APPOINTMENT ONLY

- offer you a professional environment using quality Products at a competitive price.
- have 19 years experience with current trends in colouring, Perming, cutting and styling for the whole family.

Phone Linda  
5253 3039

for an appointment

Get Setup & Trained with  
**M.Y.O.B.**



PHONE 1800 645 545 NOW  
For a FREE no obligation consultation.

## BELLARINE JONGLEURS

### HIJACK

Directed by Nathania Hall  
Rehearsals are going well with everyone busily fine-tuning their characters. Hijack is set aboard an Airplane bound for New York, which is then hijacked by two bumbling hijackers. It is also complete with colourful passengers and their attempts to avert the hijacking.

### DREAMS

Written and Directed by Jacqui Hall  
Everyone is thoroughly enjoying rehearsals for Dreams, as everyone loves a fairy story. Dreams is set in a forest complete with fairies and a Princess who is unable to dance and how the enchanted fairies help her overcome this.

SHOW DATES August 23<sup>rd</sup> - 25<sup>th</sup> at  
7.30pm  
St. James Hall, Collins Street,  
Drysdale.

### TICKETS

Ring Chris Baldwin on 5253 3168  
Tickets are \$8.00.  
Rachel Williamson.

### PANDEMONIUM

Bellarine will be holding there last ever dance party on Friday 26<sup>th</sup> May. The age group is from 10-17 year olds. We will be featuring 3 local bands. From 7.00 - 10.00 pm. Be sure not to miss this one off event.

Any enquiries contact Jacqui Hall on 52 512893 or Tegan Williamson on 5251 1130.

## DRYSDALE SENIOR CITIZENS

Firstly a big thank you to all who helped with our Trash and Treasure sale, which was a great success; also thank you to all who donated items. The Easter egg competition was won by G. Norman, 2<sup>nd</sup> prize went to H. Friese.

The club re-opens on Monday May 15<sup>th</sup> after the sanding and repolishing of the hall floor by the council, to whom we thank for doing this for us.

In June we have several functions organised:

June 12<sup>th</sup> there will be a musical and variety afternoon followed by tea, to celebrate the Queen's birthday, members are asked to please bring a plate.

June 26<sup>th</sup> a mid year luncheon, consisting of a roast dinner and Christmas pudding will be served, courtesy of the St. James Ladies Guild, who look after us excellently. Entertainment will follow the luncheon - "The Sally Carpers" will be attending.

The Sunday Bowls day which was on 9<sup>th</sup> April went very well - a good time enjoyed by all.

We now approach the time for electing a new committee, our Annual General Meeting will be held on July 10<sup>th</sup> at 1.30pm. Nomination forms will be available from Monday June 5<sup>th</sup> so do give some thought to taking up a position on the committee.

If there are any generous people out there, the club does need 2 or 3 people to act as jockeys, to help bring some of our members to the club each Monday with the community bus. Drivers and jockeys are required approximately once every six (6) weeks.

Several of our members have been in hospital for surgery - on behalf of the committee and members; we wish them all a speedy recovery.

See you next edition,  
Sincerely,  
I.M.Astill.

Uniting Church in Australia

CONCERN

## VILLAGE OP SHOP

Come and browse through our range of good quality ladies and mens wear, plus our selection of young adult and childrens clothing and our range of small household goods.

DONATIONS OF GOOD CLEAN CLOTHING AND SMALL HOUSEHOLD GOODS REQUIRED

Phone: 5251 3640.

Shop 19/4 Village Walk, Drysdale.  
Hours: Mon - Frid 10.00a.m. - 4.00p.m.  
Sat - 9a.m. - 12 Noon.



## PETROL STATION & CONVENIENCE STORE

97 High Street Drysdale Phone 5251 2603  
Petrol, Autogas Bait & Fishing Supplies

### CAR WASH

Wash \$3.00 Wash & Polish \$4.00 With Petrol

Open 6.00am-10.00pm

# LATEST TRENDS ON HEP C - A SEMINAR

Hepatitis C was only discovered in 1988. It is thought now to be the most common cause of chronic inflammation of the liver and may affect as many as 1% of the Australian population. There are many myths and misconceptions around this virus.

For any one interested in Hep C, a panel of workers with expertise in the area will be speaking at an up and coming seminar in Ocean Grove.

Whether you are a health worker, teacher, someone whose life has been impacted on by Hep C or are simply interested you are warmly invited to attend.

## TOPICS INCLUDE:

Latest trends in transmission modes  
Latest in treatment options: western allopathic medicine and alternative  
The impact for people living with Hep C  
Women and Hep C  
Dispelling the myths

## SPEAKERS:

\* Emily Prewett:  
Gastroenterologist & Hep C Specialist  
\* Jaqueline Richmond:  
Hep C Educator, St. V's Hospital  
\* A Natural Therapist:  
TBA  
\* Denise Haldone (C/-VIVAIDS)  
A Consumer Representative

**PROMISES TO BE AN INFORMATIVE AND INTERESTING AFTERNOON ..... NOT TO BE MISSED!**

**WHEN:** Thursday June 22<sup>nd</sup> at 12.30 - 4.30pm

**WHERE:** Ocean Grove Community Health Centre, Cnr. Presidents Ave & The Avenue, Ocean Grove.

**For more INFORMATION and BOOKINGS:**

**Phone: Jayne Kotz**

# LADIES PROBUS CLUB OF BELLARINE INC.

Registered No: A14696T

The new committee formed, and took on their tasks with pleasure. We had a good start to the new Presidents Year with an Easter Bonnet Parade. Scones and cream served with coffee or tea helped new members meet others.

Margaret Wild had a novelty Easter Bonnet, which when unfolded became a fan. It was bought on her latest travels, for which she is becoming notorious. Her account of her Asian holiday, overlapped her allotted time, so we can hear the rest some other time.

The Peninsula Players performed "A Tribute to Noel", two of our members are in charge of props, and usually creep around the stage in black, making as little noise as possible. New show in July. Murder at Deem House.

The May Luncheon Group will be eating at "Leonardo's", Leopold. The group usually go to lunch after the monthly meeting, so make a day of Probus.

The speakers for May are David and Debra Conolan, from "Team Life Cares". They run special events for seriously chronically and terminally ill children and their families.

Forthcoming trips, are a matinee to "The Sound of Music", on Wednesday 7<sup>th</sup> of June. It should be a memorable event.

Groups. Members who are interested in Mah Jong, Canasta, or Scrabble meet at members homes at appointed dates and time.

Norma Bushby the new President has started off her term of office well, and will be well supported by her committee.

Yours in Friendship,  
Iris (Liz) Tolton.

I need

a bank committed to face-to-face service.

I want

a bank that supports my community.

I get

both with Bendigo Bank.

To find out more about Bendigo Bank, please come and meet the team at the Bellarine Peninsula Community Bank Branch, **44 Newcombe Street, Portarlington.**  
Ph. 5259 3266 Fax. 5259 3277



**Bendigo Bank**  
EVERY STEP YOU TAKE

## BELLARINE FENCING Co

For all your fencing & gate needs,  
- Picket - Paling - Arc.

Phone: Andrew & Gayle Baylis  
on 5251 3090 or 0417 544 887



**Bellarine**  
Hearing  
Services

**Audiologists & Hearing Aid practitioners**

- Professional hearing assessment
- OHS accredited provider For eligible pensioners
- Quality hearing aids

**PH 5229 6407**

\* NOW AT DRYSDALE EVERY TUESDAY

# OBERRAMMERGAU LOOKING FOR YOUNG PEOPLE

The little village of Oberammergau in Bavaria, is again presenting the Passion Play which they have performed for the past four hundred years, every ten years. The villager does this to fulfill a vow they made if their village was spared from the Black Death plague.

Commencing in June and running through till August, the play about the Trials and Crucifixion and Resurrection of Jesus Christ, is attended by many thousands of people from around the world. This year, some of our local people will be there.

As a Postlude to Easter and a Prelude to Oberammergau's current performances, the Bellarine Uniting Church held a devotional afternoon in the church, at which coloured slides of the village and of the Passion Play were presented. Those present learned of the preparation in the lives of the characters who are to play the main roles. Men begin to grow their hair and beards about twelve months beforehand. Actors taking the main roles have to be people of exemplary character. The cast numbers about 1700 performers.

The slides belong to the parents of Wendy Hebbard who led the devotions. They were presented quietly, with time for reflection. The reverent afternoon was quite inspirational. One imagines how much more so, it would be to see the real Passion Play.

## WAR REMEMBERED

An evening to quietly share memories and reflections on war, especially the First World War and Anzac, was held just after Anzac Day, at the Bellarine Uniting Church Hall. There were a number of people who had first-hand stories to tell with more who could relate some incident concerning an uncle or grandfather. All stories were interesting and it was felt that these should be recorded in writing before these memories fade. There were many items of war memorabilia on display around the hall, including complete uniforms, medals and photographs. We left for home feeling a sense of gratitude for the sacrifices made by all those who fought in wars to defend our way of life.

Wendy Hebbard.

Are you under 25? Would you be interested in being involved in the organization of a youth expo to be held in Drysdale in November this year.

The Youth Expo will be an opportunity for young people to showcase their skills in music, art, drama. The day will also provide a range of free activities.

The Youth Expo has received financial support from the City of Greater Geelong and other sources.

We are looking for interested young people to be involved in deciding the format and activities for the day, for example, organizing a band competition.

Springdale Community Cottage will provide administrative support to a Organising Committee, however, we want young people to organise this event and make sure it is relevant and fun.

If you are interested please contact Lisa at Springdale on 52531960

## SPRINGDALE COMMUNITY COTTAGE INVITES YOU TO A FRIENDS OF SPRINGDALE WINE AND CHEESE EVENT

Come and meet new local residents  
See the range of services available to local residents  
Meet your local councilor & local State Government members

ALSO

Launch of the "New Residents Kit"  
To be launched by  
Cr Rob Binnie & Hon. Elaine Carbines MLC

When: Wednesday 21st June

Time: 2pm - 3.30pm

Where: Springdale Community Cottage - 14-16 Princess St, Drysdale.  
More Information & RSVP: 52531960

**BELLARINE**  
VETERINARY PRACTICE  
7 Palmerston Street, Drysdale.

Tails & Whiskers Members  
From March through to June  
Present This Coupon to Receive  
10% Off Microchipping

An appointment is necessary  
with this offer.

**PHONE: 5253 1393**

**Frank Burge Cars**

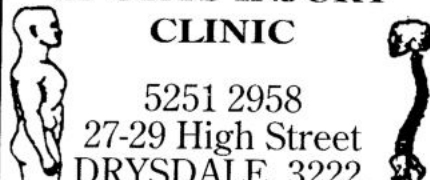
**KEITH PURCELL**  
Phone: 5222 1606  
Fax: 52218608  
Mobile: 0418 554 011

172 Fyans Street,  
South Geelong 3220

**CONCEPT CAMPERS**  
Manufacturers and repairers of Annexes,  
Awnings, Tonneaus, Tarps, Horse Rugs,  
Boat Covers Custom Built Camper Trailers  
Caravan and Boat Storage  
Discount for senior citizens

Phone (03) 5253 2569  
61-63 Murradoc Rd. Drysdale.

**DRYSDALE  
PHYSIOTHERAPY  
AND  
SPORTS INJURY  
CLINIC**



5251 2958  
27-29 High Street  
DRYSDALE, 3222.

**DRYSDALE  
REMOVALS  
& STORAGE**

Local, Country,  
N.S.W. & S.A.  
PH. (03) 5251 3674



# NATIONAL SENIORS ASSOCIATION

Meeting Friday June 30 at 10am Wool Exchange Hotel, 59 Moorabool Street, Geelong.

The NSA is an Australia wide group with over ONE THOUSAND members in the Geelong - Bellarine Peninsula area.

Following our June meeting between 11am and 11.30am we will have an informal "Chat and Chew" for any member who usually cannot come to meetings or for any member who wishes to renew friendships.

Contact Joan on 52 222835, Alf on 52 443557 or P.O. Box 1035, Geelong

3220. Subscriptions may be paid at our meetings or through P.O. Box 1035, Geelong, 3220.

## NATIONAL SENIORS MEETING

Our Annual General Meeting will be held on July 28 at the Wool Exchange Hotel, Moorabool Street, Geelong. Zone chairperson Joan Riddle and Branch Development Officer Helen Matthews will attend this meeting.

Our occasional speaker will be B.D.O. Helen Matthews. Her subject of course will be "NSA - Australia's Largest Lobby Group for People aged over 50."

The NSA currently has 188,000 members Australia wide and over 1000 in the Geelong - Bellarine Peninsula area. Could each member please regard this notice as a personal invitation?

Contact Alf on 52 443557, Joan on 52 222835 or P.O. Box 1035, Geelong 3220.

# RURAL AMBULANCE VICTORIA BELLARINE BRANCH

## AUXILIARY SEEKS PUBLIC SUPPORT

Rural Ambulance Victoria today called on community members in the Bellarine Peninsula area to support the Service by joining the Bellarine Branch Auxiliary.

"Auxiliaries have been an integral part of the Ambulance Service's Branch structure for many years," said RAV Community Coordinator Tracey Robertson, "and we are keen to revitalise them and increase their role within RAV."

Ms Robertson said Auxiliaries played a critical role in engendering

community support for Rural Ambulance Victoria at a local level as well as raising funds to enable Branches to enhance their equipment over and above the facilities provided through the RAV budget.

"All ambulances have the appropriate equipment necessary for emergency response," said Ms Robertson, "but it's always encouraging to see dedicated Auxiliary volunteers aiming to add to that equipment so that their local Branch can provide an even better service to the community."

"The Auxiliaries are totally dependent on volunteers and community support, and on behalf of Rural Ambulance Vic-

toria I urge all members of the community to join their local Auxiliary and help RAV serve the community."

"The position of Community Support Coordinator within Rural Ambulance Victoria was created to provide an interface between the Service and the community, particularly Branch Auxiliaries.

For further information contact: Tracey Robertson, Community Support Coordinator. Ph: 03 5337 9230 Mobile: 0409 011 557

**CLIFTON SPRINGS CAKE SHOP**  
**DARYL & JULIE FORD OWNERS**  
 SHOP 2, 3 WYNDHAM STREET  
 NEXT DOOR TO WISE GUYS  
 PHONE 5251 3139  
**RISE TO YOUR PASTRY KNEADS**

**DRYSDALE VILLAGE DRYCLEANERS**  
 Drycleaning, repairs & alterations also Shoe Repairs.  
**Drycleaning 3 Garment Special \$15.50 \*conditions apply.**  
**HOURS 7.30 - 5.30 Weekdays. 9 - 12 Saturday.**  
 21 CLIFTON SPRINGS RD, DRYSDALE.  
 PHONE: 5251 3990.

**DRYSDALE KITCHENS**  
**CABINETS & JOINERY**  
**PH: (03) 5253 2774**  
 EST. 1986

**Chui Yuan** 酒翠家園  
 Chinese Restaurant (B.Y.O.)  
 TAKE AWAY & HOME DELIVERY  
 FUNCTIONS & GROUP BOOKINGS A SPECIALTY  
 QUALITY & CLEANLINESS ARE PARAMOUNT  
 REASONABLE PRICES  
 \* \$5.00 LUNCH SENSATION MENU  
**Ph. 5253 1788**  
 Shop 2, 26-28 High St. Drysdale, 3222.

Winter is here  
  
 Bare rooted Roses and Fruit Trees are available. Come and see our great range. If we haven't got it we will try to get it for you.  
**Alinga Nursery**  
 Cnr Jetty Rd & Railway Cr Drysdale.  
 Open 7 Days. Ph 5253 1299

**V.I.P. HOME SERVICES** **LAWNMOWING DIVISION**  
**CARL OLSSON - Franchisee**  
 B.H.: 13 26 13 A.H.: (03) 5253 2032  
**MOB.: 041 612 7 862**  
 • Complete Garden Maintenance • Gutter Cleaning  
 • Rubbish Removed • All Garden Needs.  
 \*FREE QUOTES  
 \* FULLY INSURED  
 \* ALL WORK GUARANTEED

# WHAT'S ON AT CLIFTON SPRINGS PRIMARY SCHOOL?

After an extra-long break everyone is keen to begin another busy term. During May the prep children are expecting a visit from a vet to coincide with their "Pets" theme.

The grade one and two children will be enjoying an excursion into Geelong to see "Possum Magic" at G.P.A.C., which fits in with their theme of "Environment and Trees".

The grade threes will be visiting Werribee Park for the day and taking a trip back into the past as they tour the historic mansion. During the same week the grade four children are off to experience life on the goldfields of Ballarat, and to view the sound and light show. We can't wait to hear their stories.

Also, the grade six children are heading off on a camp this term. They will visit the Grampians for four days at the end of May.

We also have many children involved in a variety of sports activities this term. There is the school cross country for children in grades three to six with the fastest runners attending the District Cross Country.

There is a Bike Education program this term for all grade four children, with the assistance of Senior Constable Glen Styles. We also have a football clinic at Drysdale Football Ground and basketball clinics run by some of the Geelong Supercats. As if this isn't enough, the grade five and six children are involved in Interschool sport in games such as football, netball, T-ball and volleyball.

Education Week will be another highlight at our school this term, with Open Day on Monday 22<sup>nd</sup> May between 11am - 1pm. Parents and families are welcome to visit our school to see their children at work and our wonderful facilities and buildings. For enquiries please phone our school on (03) 5251 3581.

Kerryn Driscoll.  
Teacher.

# SPRY APPLAUDS CFA VOLUNTEERS

Member for Bellarine, Garry Spry today applauded the efforts of thousands of Country Fire Authority (CFA) volunteers who give freely of their time to support this important community service.

In the CFA region covering from Queenscliff to Vite Vite North, 5156 volunteers attended more than 3000 emergencies last year, including fires and road accidents.

"These men and women give freely of their time to serve their communities, sometimes under extreme circumstances, often placing their own lives at risk in the process," Mr. Spry said.

In addition to 24-hour emergency response, volunteers give their time to provide community education programs, which help reduce the risk of fire in the home, business or in the bush.

"I acknowledge the contribution of the 63,000 CFA volunteers who provide a magnificent service to this State, and form an integral part of this vital team which enjoys a world wide reputation for voluntary commitment and dedication," Mr. Spry said.

# DRYSDALE PROBUS LADIES

Reg. No. A0021357E

Our AGM Meeting in March was most enjoyable - we now have some new members on the committee, I am sure they will have a great year.

Our Interest Groups are firing, and they are Merry Munchers, Happy Hookers, Calamities, Patchwork, Twilighters (Singing Group) and a new one to explode on the scene, Star Gazers, this group attends film morn-

ings once a month, and will look to going to live theatre.

Merry Munchers attended Rose's last lunch after AGM and forty happy people ate their way through pasta, salads, and sweets and coffee.

Our meeting in April was Easter Monday so we had an Easter Theme - Hot Cross Buns for morning tea, judging of "crazy hats" - our talented nee-

dle work ladies exhibited their wonderful work, others brought special artifacts - and would you believe we had a visit from the Easter Bunny who handed out Easter Eggs - he was fat and cuddly!

More next month - hoo roo for now.

Jeanette Derham.

## MAGGIE GOVE N.D.

**Bowen &  
Natural  
Therapist**  
Member of A.N.T.A.  
**Drysdale**  
**03-5253 2230**

## 1/2 PRICE Book-Keeping Up-To-Date Service

... When you invest  
in our monthly service

- Full mobile service
- Fixed monthly cost
- Monthly management reports
- Also available - Payroll - Invoicing - Budgeting



PHONE 1800 645 545 NOW  
For a FREE no obligation consultation.

## BONE MARROW RECYCLE SHOP

High St. Drysdale

**Donations of  
good clothing  
and brick-a-brac needed.**

All proceeds from our shop go to help those with Leukaemia

# SPORTS REPORT

## THE MIGHTY HAWKS

With our club well into the 2000 season I would like to give our community of Drysdale and Clifton Springs an insight into how important Drysdale Football and Netball Clubs are to our community. People sometimes think that sporting clubs like ours revolve around how well our senior team is situated on the ladder, true senior performances do make it easier for the club to gain revenue (members, sponsors, canteen and bar sales etc.) it also puts the name of Drysdale forward in the newspapers and radio, which also helps our township.

The big picture of what our clubs are doing is rarely seen, when you take into account of Aus-Kick players, YMCA, U/11, U/12, U/13 and two U/15 sides plus one U/18 side. This totals more than two hundred junior players involved in football, as well as netballers.

Sport plays a big part in educating our young men and women. If only local Government and councils realised what a big part local clubs (such as Cricket, Basketball, Soccer, Tennis, Football, and Netball) play in teach-

ing our young the fundamentals in the life of sport.

We as a club do need funds to reward senior players, but this is a small part of what we require in the overall expenditure in running our club. Your membership, sponsorship, or just your support allow us to supply our juniors with all the necessary equipment - jumpers, umpires, footballs, trainers, showers, training lights, drinks, and many other necessities to just play footy.

We believe the coaching staff of our juniors are superior to many other clubs. It is important that the values in playing sport can help mould our young people. Our change and social rooms are always being improved by many hours of voluntary work.

Drysdale Reserve has the best facility in the Bellarine Football/Netball League. This is due to these members who have worked tiringly and consistently over many, many years. I hope my time as a member I can also contribute in improving our facilities.

At a President's meeting recently at Football Geelong, it was interesting

to find out that we had one of the cheapest membership rates in both Leagues, and when you compare this with the facilities we offer it really does show that we are truly a community club.

It was great to meet all of the past and present players at Drysdale's "Team of the Century Night". Congratulations to John Edsall on a great evening enjoyed by all. Drysdale Football Club thank John, Darryl, Greg, and the rest of the team on the enormous amount of time and energy that was put in to make it such a great occasion.

Congratulations to Jeff Stewart on playing 200 games, Jeff is a great ambassador to the Drysdale Football Club, and we have not enough room to list all of the work that Jeff has done for this club, a very special club person who has helped to make and keep Drysdale Football Club strong.

### THE YEAR OF THE HAWK

Allan Bliss  
President

**STAMPING HOUSE**  
*Make your own greeting cards!*

All classes just \$15      Classes at times to suit

Ask for Elizabeth George  
Ph: 5251 1301 Fx: 5251 1302 Mb: 0428 998 930

Rubber stamping classes, Stamps, cards, accessories to order.

**FREE INITIAL CONSULTATION**

▼ ACCOUNTING & TAXATION SERVICES  
▼ SMALL BUSINESS CONSULTANTS

**ETA**  
FRANK TIGANI & ASSOCIATES PTY LTD

**5253 2992**

CRN. OF SPRINGS RD. & HIGH ST., DRYSDALE

**BUILDER**

HIA MEMBER **Paul Jones** Registered B.P.B.

Ph. 52 513934

NEW HOMES ~ EXTENSIONS ~ AIR CONDITIONING  
Mobile 0419 354259

Open Wednesday thru Monday AM-PM.  
Closed every Tuesday (our day off)

*Jetty Rd. Fish & Chips*

  
(A.C.N. 006.464.240. Vic)

Now Under New Management Corner Pinnaroo Avenue Clifton Springs 3222

- Home Made Hamburgers • Steak Sandwiches • Souvlaki's
- Egg & Bacon Snap • Chinese Made Dim Sims and Vegetarian Spring Rolls • Four 'N' Twenty Pies • Boss Hogs Hot Dogs
- Aussie Chicken Flavoured Hot Chips • Ice Cold Mars Bars • Cold Drinks
- RedEYE - all Five Flavours • Powerade - Mountain Blast • Bait

Only 100% Cholesterol Free Pure Vegetable Oil is Used  
In our New Turbo Fryers.

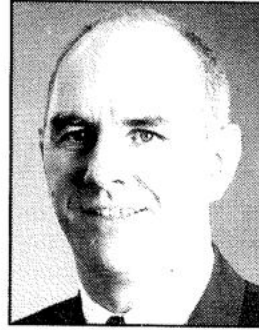
We Use Only The Finest GLUTEN FREE HAMBURGER MINCE AVAILABLE.

Phone orders a specialty  
Just dial 5253 1821





# The Professionals



*Phil  
Cumming*  
AH 5251 3047  
0408 599 232



*Gabrielle  
Beams*  
AH 5253 2848  
0412 430 976

## RENT Vs BUY - THE QUICK FIX PARADOX

Newspapers and financial journals throughout Australia continue to print intellectual arguments saying that we are better to rent rather than buy our principal place of residence. They tell us about the better lifestyle and consumer goods we can accrue with our extra disposable income.

These arguments fail to take into account several factors. Most consumer goods and services (cars, furniture, overseas holidays, etc.) depreciate or leave the consumer with nothing to show for them at the end of the day. And of course, rents go up faster than the CPI; the same proportion of income will buy proportionally less rental accommodation over a ten-year period. The homeowner on the other hand ends up with a property that may have doubled in value.

Clever marketers extolling the virtues of the instant gratification society assault children and adults alike. The psychological pressure of advertising makes individuals less able to say no to the lifestyle of the moment.

Why not teach the children the value of deferred gratification? The paradox of the quick fix is that it is less attainable the more we depend on it. At the same time as incomes fail to keep pace with inflation, consumers become psychologically more dependant on the style to which we have become accustomed.

It is only natural that people investing in their own home develop a greater sense of pride in that property. It provides a focus for creative self-improvement and offers the kind of stability that enables families to plan their lives with a greater degree of certainty.

\*\*\*\*\*

The start of the year 2000 has been very busy in real estate, as you will have heard from many sources. The local Clifton Springs/Drysdale area has also seen dramatic increase in sales and record numbers of properties being sold.

This demand has been attributed to many factors including the current low interest rates, low anticipated inflation, and the pending GST.

Sales of properties in other areas including Melbourne, Geelong, and rural areas has seen an increased number of buyers coming to the Bellarine Peninsula, having sold their homes for higher prices, and are now looking for the change in lifestyle.

We currently have buyers looking for properties in the Clifton Springs and Drysdale area; so if you are considering selling your property, please call us on 5251 2847 for the latest market details and a free, no obligation appraisal.

## **Guyett Real Estate P/L**

**11 Clifton Springs Road, Drysdale**

# **5251 2847**