

# The SpringDale Messenger

Your Free  
Community  
Newspaper

Compiled and published by the SpringDale Community Cottage Inc A002916V

Circulation 3,700

ABN 21 404 220 267 Vol 10 No.8, November 2000

## IMPRESSIVE NEW HOME FOR DRYSDALE MEDICAL CLINIC

The Drysdale Clinic has moved into their new medical centre on the 16<sup>th</sup> October 2000. Commenced in 1984 by Dr. Sandra Palmer and Dr. Nick Kafieris, and currently run by Dr. David Walder and Dr. David Unkenstein, the new building is the culmination of several years of planning with a view to the future of the local community.

The addition of Dr. Catriona Pendrigh, Dr. Lucy Ham and Dr. Carmel Pilgrim over the last couple of years has seen the clinic grow quickly and forced the move from the current premises in Princess Street.

Construction and fit out of the new building was done where possible by local trades people.

These included builders – Mike and Shaun Colley (JF Colley & Co.P/L), Andrew Skeen Plumbing, Chris Skeen Electrical, Blinds - Tony Singer (Instyle Blinds), Carpet/Vinyl – Neil Petrie (Drysdale Carpet Court), Plumbing Supplies (Drysdale Plumbtec), Reverse

Cycle Heating/Cooling – Craig Hodder (Baygas).

Expansion of the Clinic was completed by the commencement of Dr. Peter Bishop who has recently moved to the area from Melbourne. Peter is committed to the practice principles of providing a comprehensive high quality general practice

and we welcome Peter and his wife Helen to the community.

Clinic Hours shall remain the same :-

Monday – Friday 8.30am – 5.00pm.

Saturday – 9.00am – 12.00 noon.

Phone Number remains the same : 5251 2865.



**DRYSDALE  
VILLAGE**

**HARDWARE**

**(03) 5251 3267**

THE ARCADE  
HIGH STREET  
DRYSDALE, 3222.

*YOUR HANDY  
HARDWARE  
STORE*



**Bank of Melbourne**

**SHOP 9  
SUPERMARKET  
COMPLEX  
DRYSDALE**

# The SpringDale Messenger

The SpringDale Messenger is compiled by the SpringDale Community Cottage Inc. A0024916V, 14 Princess St. Drysdale. Postal: P.O. Box 80, Drysdale, 3222.

## Advertising and Enquiries: PH: 5253 1960. FAX: 5253 3050

Community Groups, Churches, Sporting Clubs, Service Clubs, etc., are invited to submit details of their future activities for regular inclusion in the Community Diary section, or as articles in the news section as appropriate.

Copy may be typed or printed with a good ribbon (preferred), or legibly handwritten and left at the SpringDale office at 14 Princess St., or posted to P.O. Box 80, Drysdale, 3222.

## Next Publication:

**Copy deadline:**

**27th November, 2000**

**Distribution:**

**15th December, 2000.**

Views expressed in this newsletter are not necessarily the views of the Publisher, the SpringDale Community Cottage Inc.

## ADVERTISING AND ARTICLES:

SpringDale Community Cottage, Phone (03) 5253 1960.

To ensure publication in a specific issue, copy must be submitted prior to deadline.

Layout and Design of this issue by Pagation Design Services, Geelong.

Ph: (03) 5223 2494

email: [smd@pagination.com.au](mailto:smd@pagination.com.au)

*If visiting the Bellarine Peninsula, drop in for a meal at the*

## DRYSDALE HOTEL

- Friendly atmosphere
- Counter lunches and teas every day including Sunday
- Cosy log fires
- Geelong's first Pub-TAB facilities



LUNCH 12.00-2.00pm - TEA - 6.30-8.00pm

*Your host David Leahy and family*

High Street, Drysdale. Phone 5251 2301  
(On Geelong-Portarlington Main Road)

## Contents

|   |  |
|---|--|
| IMPRESSIVE NEW HOME FOR DRYSDALE                                | DRYSDALE LADIES  |
| MEDICAL CLINIC ..... 1  | PROBUS CLUB INC. .... 14   |
| BELLARINE SECONDARY COLLEGE WINS ..... 3                        | REG. NO. A0021357E ..... 14  |
| WORLD ROBOCUP CHAMPIONSHIP ..... 3                              | "Another great year for the Swan Bay Integrated Catchment "Management Project." ..... 15 |
| Physios Take a Splash ! ..... 3                                 | H.E.L.P. in on its way to the Bellarine Peninsula ... AGAIN! ..... 16                    |
| IT'S THAT TIME OF YEAR AGAIN! ..... 4                           | BECOME A VOLUNTEER ..... 16  |
| THE MAGIC OF THE OUT OF DOORS ..... 5                           | THE BELLARINE AGRICULTURAL SOCIETY ..... 16  |
| LET'S CELEBRATE THE 21ST BUNYIP FESTIVAL TOGETHER ..... 6       | SHARING THE NEWS ABOUT DRYSDALE PRIMARY SCHOOL! ..... 17                                 |
| BENDIGO BANK PORTARLINGTON ..... 7                              | Take Off Weight Naturally ..... 18   |
| News Flash ..... 7  | MONSTER BOOK SALE ..... 18   |
| YOUTH FESTA 2000 ..... 8  | SPRINGDALE SINGERS ..... 18  |
| DRYSDALE BRANCH - COUNTRY WOMANS ASSOCIATION INC ..... 10       | LADIES PROBUS CLUB OF BELLARINE INC. .... 19   |
| Coming Soon - Contemporary Handcrafts Display and Sale ..... 10 | SPECIAL ANNOUNCEMENT ..... 19  |
| SpringDale Bellarina Toy Library ..... 10                       | USE AMBULANCE IN AN EMERGENCY ..... 20   |
| WHAT'S ON AT CLIFTON SPRINGS PRIMARY? ..... 11                  | DRYSDALE SENIOR CITIZENS CLUB. .... 21   |
| CR. ROB BINNIE, BELLARINE WARD COUNCILLOR. .... 11              | IN YOUR GARDEN ..... 22  |
| WINE DRIVE ..... 12   | POTS & PANS FOR EAST TIMOR .... 22   |
| HARVEY WORLD TRAVEL ..... 14                                    | POINT RICHARDS MINIATURE RAILWAY ..... 23  |
|   | PENINSULA PLAYERS INC. .... 23   |
|   | The Spirit of Christmas comes alive! 24  |

## Feeling Troubled?



*Explore solutions! Be self renewed!*

**Counselling** (For all ages & Issues)

**\*Confidential \*Skilled \*Relaxed \*Personal**  
**A changed life begins with one small step!**

**Phone: 5253 3060 Today!**

*(Fees negotiated according to Income)*

*Situated: 219-223 Jetty Road, Crn. Cowies Road, Drysdale, Bellarine Peninsula, Vic. 3222*

# BELLARINE SECONDARY COLLEGE WINS WORLD ROBOCUP CHAMPIONSHIP.

From the 28<sup>th</sup> of August till the 3<sup>rd</sup> of September, Melbourne had a chance to host Robocup 2000, which is the Olympics of robots. Within Robocup 2000 there were a number of events, one of them being Robocup Junior, which was designed for secondary school students. Robocup was developed at Bellarine Secondary College by Mr. Brian Thomas and a group of students. It now looks like it is going to be one of the most exciting leagues in Robocup.

Another student and I decided we would like to be part of Robocup Jr. We got our Lego Mind storms kits, which we used to build our robots with and started to design our robots. After many months of trialling our robot designs, kickers, light sensors and touch sensors, we finally came up with two robots we thought would beat the other teams. Another

important part of our robot design was the programming, which we did on Robolab. It is a computer program that is used to develop a program that is then transferred from the computer to the RCX brick. The RCX brick has a number of ports that connect to motors and sensors.

The light sensors were a crucial part of the robots' ability to sense the infrared ball. We prototyped many different Lego sensors and even made some of our own using phototransistors and an amplifier circuit.

On game day at the Melbourne Exhibition Centre, we experienced trouble with the infrared balls. We found out that the light was only being directed in one direction and not spread out as we thought it would be. Despite this problem, we continued on, even though the robot could not sense as well as it should.

Whilst we were practicing for one of our matches, one of the robots smashed into a wall and fell to pieces. We had to rebuild the whole robot in about 15 minutes, which we did successfully.

On competition day, we only won one of our three matches, which was pretty disappointing after all the hard work we had put into preparing the robots.

One of the Bellarine Secondary College teams was successful in winning the World Robocup Jr. Championship. They managed to win in extra time after a three all draw. It was very exciting with a huge crowd cheering the teams on.

Overall, this was a great educational experience for myself and all the other students who competed. We also had a great deal of fun and look forward to competing in Robocup Junior again.

*Luke Nievandt - Year 9.*

## Physios Take a Splash !

Hydrotherapy is exercise therapy and rehabilitation using the wonderful properties of water and the positive effects it has on the body. People with arthritis, chronic back pain, musculo-skeletal pain problems like shoulder, hip and knee pains, sports injuries and people recovering from fractures, operations, car accidents and work injuries all find hydrotherapy an excellent way to get better and fit again.

The Drysdale Physiotherapy and Sports Injury Clinic has started supervised hydrotherapy sessions with our new physiotherapist Emily Turner who has special training in this area. Emily has joined us from Bendigo Hospital where she worked in all areas of rehabilitation and is a keen sports enthusiast, especially swimming and equestrian events.

John Humphrey has taken off to discover spicy foods and far away places and will rejoin us next year. In his absence Elise Riley is working as a part-time physiotherapist from Ocean Grove. Elise has expertise in spinal and sports physiotherapy.

The clinic also offers the services of an excellent Myo-therapist/masseur in Renee Le Strange who treats problems with a range of manual techniques to relieve the aches and pains of the muscular system.

Total Care Podiatry also continues to provide comprehensive foot care including orthotics for the feet.

Peter Terry the principal of the practice would like to thank all our patients for their support and friendliness in helping he and his family settle into the community. The practice aims to provide the highest standards of physiotherapy skill and care for the assessment and treatment of spinal, sports and musculo-skeletal pain problems.

### CONCEPT CAMPERS

Manufacturers and repairers of Annexes,  
Awnings, Tonneaus, Tarps, Horse Rugs,  
Boat Covers Custom Built Camper Trailers  
Caravan and Boat Storage  
Discount for senior citizens

Phone (03) 5253 2569  
61-63 Murradoc Rd. Drysdale.

### Physiotherapy - Move well, Stay well.

#### Hydrotherapy classes:

Where? Portarlington Pool, 104  
Smythe St, Portarlington.

When? Tuesday 8am - 9am and  
Thursday 2pm - 3pm

Starting from the 26<sup>th</sup> September.

For all appointments Call the  
Drysdale Physiotherapy Clinic on  
5251 2958. 27-29 High St,  
Drysdale.

A physiotherapy assessment is essential to ensure safety and design a program for each person. TAC and Workcover & Veteran Affairs patients may be covered so all patients need to call and arrange an appointment.

### DRYSDALE PHYSIOTHERAPY AND SPORTS INJURY CLINIC



5251 2958  
27-29 High Street  
DRYSDALE, 3222.



# IT'S THAT TIME OF YEAR AGAIN!

DIG OUT THE BOXES AND UNPACK  
THE DECORATIONS IT'S TIME FOR

## "CHRISTMAS TOWN"

TO PUT ON IT'S CHRISTMAS FINERY  
AND WELCOME ALL TO SEE.

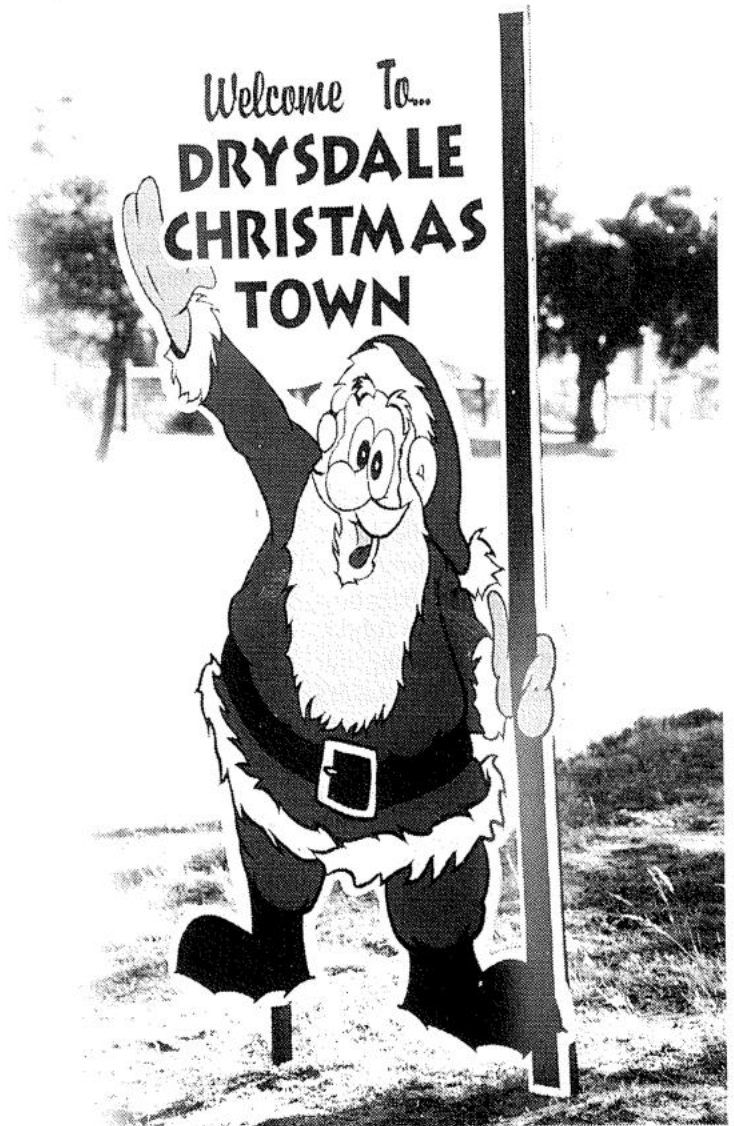
The Drysdale - Clifton Springs Community Association once again invites every member of the community to join in the fun and spirit of the Christmas Season and decorate their homes and businesses as well as they did last year. Perhaps even better?

The Association aided by The Portarlington/Drysdale Lions Club aim to start decorating the Main Streets of The Village towards the end of November. There are lots more decorations this year, some needing repair, including our very own Christmas Banners designed by local school children and printed by Merv Jennings signs.

It's going to be a very big job and any willing helpers would be very welcome indeed. If you do have a hour or two to spare and can help in any way please contact:- Association President Wayne Elliott at Elliott's Tattslotto Supermarket Complex or Lions Secretary Adrian Mannix on 5251 2257.

They will be very pleased to hear from you and give you all the relevant information.

PLEASE JOIN IN THE FUN AND MAKE  
DRYSDALE CHRISTMAS TOWN THIS  
YEAR BIGGER AND BETTER THAN  
LAST YEAR.



*Trees for Life*  
A natural memorial in the heart  
of the Bellarine Peninsula

A special way  
to honour a  
family member  
or friend

**Hepner**  
Funeral Services  
*We Care*

Hepner Funeral Services  
130 Bellarine Hwy, Newcomb  
Tel (03)5251 3626 all hours  
A Tattersall Family Business.

[www.hepner.com.au](http://www.hepner.com.au)

We always design  
a home loan to  
please just one  
person. You.

No two Bendigo Bank home loans are ever quite the same, because no two people are the same. So if you want a home loan that's right for you, talk to just one bank. Us.

For more information please contact your local branch at 44 Newcombe St, Portarlington, phone 5259 3266, or visit [www.bendigobank.com.au](http://www.bendigobank.com.au)

Bellarine Peninsula  
**Community Bank** Branch



Bendigo Bank Limited ACN 068 049 178

# THE MAGIC OF THE OUT OF DOORS

Drysdale Guides shared a magic weekend with their mums.

What a great weekend we had with almost 50 mums and daughters staying for all or part of the weekend. We had lots of fun, time to talk, not too much work to do and did I mention fun. All ages were invited and the youngest was my daughter 5 1/2 years old.

Our theme for the weekend was Family. During the weekend we tried an adventurous rope course, hiked, made beach art and tried our hands at engineering, had a great campfire, cooked, slept and had a wonderful guides own. Many people contributed to our guides own. Below is a piece that was written at camp. I hope you enjoy it as much as we did.

**This is a poem about mothers and daughters.**

*We care for each other more than others*

*There is no way to describe this special bond*

*When we work together we are united and strong*

*We have our fights and differences*

*But we will get over these instances*

*Friendship like this can never be made*

*We comfort each other when we are sad or dismayed*

*I am proud to be a daughter  
I am proud to be a mother  
Because we love each other.*

This term all units have planned very interesting activities all culminating in a Christmas concert. The concert will be held on Thursday 7<sup>th</sup> December 6.30 – 7.30pm, at the Drysdale Community Hall. Please come along and learn a few Aussie Christmas songs with us and enjoy a few performances by our very enthusiastic guides. Entrance fee will be \$2.00. Proceeds of the night will help our 10 older guides who are going to a state camp in January 2001.

Please come along and help us celebrate Christmas and the "almost end" of another successful guiding year.

On Christmas Eve we will be wandering around on the back of a truck singing carols to those who are house bound.

This has been a tradition of the Drysdale Guides since Eva Deeth was our leader 40 years ago.

If you would like to nominate yourself or someone else, who is house bound for a visit on Christmas Eve please give me a ring or if



you have any questions about guides in Drysdale please give me a ring. Anne Brackley 5251 2250.

P.S. Have you noticed our new sign near the Railway Station? It looks good!

**1/2 PRICE**  
Book-Keeping  
Up-To-Date Service

... When you invest  
in our monthly service

- Full mobile service
- Fixed monthly cost
- Monthly management reports
- Also available - Payroll, Invoicing - Budgeting

**BASIC**  
Book-keeping

PHONE 1800 645 545 NOW  
For a FREE no obligation consultation.

**DRYSDALE  
REMOVALS  
& STORAGE**

Local, Country,  
N.S.W. & S.A.

**PH. (03) 5251 3674**

**Acacia**  
Pest Control

For all your environment and  
Household pest problems.

**Bee and Wasp Removal.**

**Have your home treated**  
**For the control of:**

- \* Spiders \* Ants \* Rats \* Mice
- \* Earwigs \* Cockroaches
- \* Carpet Beetles \* Silverfish
- \* Clothes Moths \* Fleas

Protect your family and greatest  
Investment from pests.  
Up to 6 months warranty.

**TERMITE CONTROL SPECIALISTS**  
Licenced to treat and Inspect for all timber pests.

**Your local pest control bloke.**

Ph: (03) 5253 1714  
Mobile: 0404 897 783

**BELLARINE  
PENINSULA  
ELDERLY  
PEOPLES  
HOME INC.**

GELLIBRAND STREET,  
PORTARLINGTON,  
(LIONS VILLAGE)

‘VACANT UNIT’  
‘INDEPENDENT LIVING’

Inquiries please  
phone the Secretary  
On 5259 2684.

# LET'S CELEBRATE THE 21<sup>ST</sup> BUNYIP FESTIVAL TOGETHER.



Next year we will celebrate our 21<sup>st</sup> Bunyip Festival – “the best annual family day out” held in the Drysdale/Clifton Springs area.

The date has been set for Saturday 24<sup>th</sup> March, 2001, so please mark this on your planning calendar for next year.

If you belong to another community group or other Drysdale/Clifton Springs institution we ask that you help us by keeping this date free of other activities – so we can all be at the festival together and our families don't have to split themselves in various directions.

I understand that Drysdale and Clifton Springs Primary Schools are the only two primary schools in Victoria (maybe Australia) who join together to share a festival. I believe it is a wonderful community activity and I'm excited to be involved with it again this year.

During the past twelve months we have tried to collate the history of the Bunyip festival. We have comprehensive minutes and funny quotable quotes from a number of meetings held late 1989 to this year. We also have information from the first Bunyip festival held to celebrate the centenary of the Drysdale Primary School. Information for the years between 1975 and 1989 may be lurking in a pile in your home or a home of your friend. If you have wanted to find another home for the information now is your chance I will ensure that it will be loved and cared for – please feel free to give me a ring (Anne Brackley 5251 2250). We are also after photos, memorabilia or any of the Bunyip Committee T-shirts.

You may see the Bunyip sneaking around in the lead up to Bunyip Festival next year – keep your eyes on Lake Lorne !

Please remember the date.

Saturday 24<sup>th</sup> March 2001 this year it will be at Drysdale Primary School, hope to see you there.

## DRYSDALE & PENINSULA FUNERAL SERVICES

Drysdale and the Bellarine Peninsula now has its own locally owned funeral directors.

- Personalised experienced staff to meet the individual needs of families
- Chapel and carparking facilities
- Pre-arranged funerals
- Pre-paid funerals
- Catering.

**24 HOURS A DAY - 7 DAYS A WEEK**

**PHONE: 5251 3477**

**1 HIGH STREET, DRYSDALE.**

# BENDIGO BANK PORTARLINGTON

## News Flash

During November an ATM machine will be installed at the community bank. Even before we opened one of the most frequently asked questions was "when will you have an ATM?"

We pride ourselves on personal banking service but there are obviously many people who require the availability of an ATM particularly after trading hours.

Community Bank's fees enable customers to choose how they do

their banking. The fee structure, which is the same as Bendigo Bank's, is quite different to our competitors. As recommended by the Australian Competition and Consumer Commission our fees are based on user-pays.

To a large extent customers have a measure of control over the fees they pay. All customers receive a guaranteed number of minimum transactions and could choose how they use them.

We do not charge account-keeping fees and customers do not have to

maintain a minimum monthly balance. This protects low income earners.

There are no transaction fees on children's accounts – and we pay the government charges – and pensioners receive double the number of transactions in recognition of their special needs.

Home loan customers receive 30 free monthly transactions, which is more than enough for most people to enjoy fee-free banking.

*Ian Faulkner  
Manager  
Telephone 52 59 3266*



Drysdale *Your One Stop Plumbing Shop*

## Plumbtec

Bathroom Kitchen & Plumbing Supplies

PH: DRYSDALE 52531268 GEELONG 52221268  
TANKS FOR DRINKING WATER & GARDENS

## Naturopath

Keir Osborne ND, Bsc.  
DIP.APP.SC. (Naturopathy)  
BSc. (Biological Science)  
ANTA Member

Herbal Medicine  
Iris Diagnosis  
Nutritional Therapy  
Diet and Lifestyle  
Counselling  
Herbal Teas

SPECIALIST IN WOMEN'S  
AND FAMILY HEALTH

Drysdale Community Health Centre  
Wednesday and  
Thursday 12noon - 6pm  
Phone: 5251 2291 or Ocean Grove  
On 5255 1320.

## Frank Burge Cars

KEITH PURCELL  
or  
DAVID GALLOP

Phone: 5222-1606  
Fax: 52218608  
Mobile: 0418 554 011  
172 Fyans Street,  
South Geelong 3220

# YOUTH FESTA 2000

18<sup>TH</sup> NOVEMBER, 2000

2pm – 11pm

## BELLARINE SEC- ONDARY COLLEGE – DRYSDALE CAMPUS

Organised by Baysa Youth Services; Springdale Community Cottage, Equinox and Ocean Grove Neighbourhood House

The Festival is fast approaching. If you are between the ages of 13 and 24 this is the day for you.

**FREE ENTRY DURING DAY  
EVENTS**

### ACTIVITIES INCLUDE

- \*Skate Park
- \*Rides
- Castle
- \*Sumo Suits & Fly Wall
- \*Parachuting
- \*Markets
- \*Bands
- \*Barbeque
- SES demonstration
- \*Climbing Wall
- \*Adult Jumping
- \*Stunt Bike
- \*Buskers
- \*Coffee Shop

### TRY YOUR HAND AT

- \*Tai Bo
- \*Juggling
- \*Human Sculpture
- \*Fire Eating

\*Belly Dancing \*Tai Chi  
SHOW US WHAT YOU CAN DO  
AND WIN CASH AND PRIZES –  
PUT YOUR NAME DOWN FOR  
ONE OF THESE COMPETITIONS

\*Battle of the Bands – win free recording time; equipment or music lessons

\*Graffiti Art Competition – winning designs win cash

\* 2 on 2 basketball (register now or on the day) – win sporting goods from Converse

\*Hand Ball Competition – Geelong Football Players will do a demonstration & help judge the competition – win sporting goods

*Fashion Parade – Recycled theme – win clothing vouchers*

7pm – 11pm - RAVE - sponsored by Equinox/Courthouse and Freeza Cost \$5.50  
Includes Battle of DJ's (winner will DJ at next Geelong Rave)  
Prominent DJ

TICKETS FOR RAVE AVAILABLE FROM SPRINGDALE COMMUNITY COTTAGE (14 PRINCESS ST, DRYSDALE) OCEAN GROVE NEIGHBOURHOOD HOUSE (91 The Parade, Ocean Grove)  
COURTHOUSE CAFÉ (Little Malop & Gherringhap St, Geelong)  
Bellarine Secondary College Cam-

puses; Baysa Youth Services (44 Spring St, Geelong West)

Free Buses will run throughout the day from St Leonards; Portarlinton; Queenscliffe; Drysdale; Ocean Grove and Barwon Heads. Free Buses will be available to take you back to these drop off points (leaving 11.15pm)

For Competition Forms or further information contact Springdale Community Cottage on 52531960

This event has been made possible by generous sponsorship from the following organisations & businesses: City of Greater Geelong & City of Greater Geelong Youth Services; Brockhoff Foundation; Alcoa; Vic Health; Drysdale Removals; SHO-BIZ; Drysdale Clinic; Mortimer Petroleum; Drysdale Village Medical Centre; CWA – Drysdale; Lions Club; The Rose Gallery Café; Alinga Nursery; Readings; Baskin Robbins; Music Workshop; Uniting Church Bellarine Parish; Wise Guys Mens Hair; Bayshore Real Estate; Sarah's Fitness Centre; Ristevski Horan Lawyers & Consultants; St Leonards Progress Association; Drysdale Village Drycleaners; Rotary Clubs; CJ Keane.



**D.L. & A.G.  
Robertson  
Plumbing**  
Licence No. 38872

PLUMBER \* ROOFER \* GASFITTER  
Maintenance & New Installations

David & Andrea Robertson  
Phone: 5253 2134 Mobile: 0411 532 133



**18-20 HIGH ST. DRYSDALE.  
OPEN 7 DAYS A WEEK**  
November to April: 10am - 5pm  
May to October: 11am - 4pm  
All Public Holidays except Good Friday and Christmas day.  
New Members always Welcome  
Ph: 5251 1605

**DRYSDALE  
CARPET COURT**

**CARPET - VINYL  
CERAMIC TILES  
FLOATING WOOD  
LAMINATE FLOORS**

Proprietor: Neil Petrie  
Phone: 5253 1855 Mobile: 0419 519 030  
63 Murradoc Road, Drysdale.



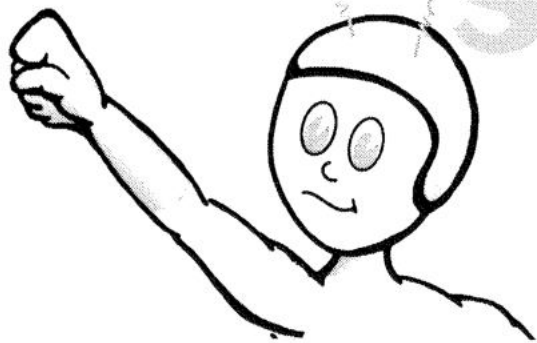
# YOUTH FESTIVAL

BELLARINE PENINSULA

Saturday

18th

November



Location

Springdale  
Secondary  
College

Springdale Campus

Entry

Activities, Rides  
Workshops

RAVE \$5.50

Battle of the DJ's competition No Pass Outs

## Competitions

Battle of the Bands, 2 on 2 Basketball, Handball, Arts - Photography, Painting/Drawing and Alternative art form, Aerosol Art and Fashion Design - Recycled Theme



Springdale  
Community Cottage  
Ocean Grove  
Neighborhood House

The Brockhoff Foundation



Presented by

Springdale Community Cottage,  
Ocean Grove Neighborhood Centre  
& BAYSA Youth Services



COMPETITION ENTRIES & ENQUIRIES  
91 THE PARADE, OCEAN GROVE  
OR 14 PRINCESS STREET, DRYSDALE

PH 5253 1960

# DRYSDALE BRANCH - COUNTRY WOMANS ASSOCIATION INC

The Geelong Show is over once again with a mixed weather report. As usual the C.W.A Dining Room was busy with meals for the four days, each branch in the group sending helpers to prepare and serve the food.

The Handcraft windows were on display as usual, with lovely work waiting to be admired.

Drysdale Branch were really pleased with the result of these:  
The Craft Window - The Colour I Like - Shades of Pink - 1<sup>st</sup> Prize.  
The Cookery Window - A C.W.A Afternoon Tea - 2<sup>nd</sup> Prize

At the end of October we have the Maryborough Branch ladies coming for lunch and we are all looking forward to seeing them again.

Christmas Lunch with Ron Sudden is on the 5<sup>th</sup> of December in our meeting rooms at the Springs so please remember the date if you have missed a meeting.

5221 2693 Shirley Lindsay.

## Coming Soon - Contemporary Handcrafts Display and Sale

### CULTURAL THREADS

Trading Partners of Centerpoint Arcade, Geelong is holding a display and sale of handcrafts in the Uniting Church Hall, High Street, Drysdale on Saturday 2 December from 10am to 5pm and on Sunday 3 December from 10am to 1pm.

This is a special opportunity to buy unusual gifts at affordable prices. There will be a wide variety of hand-made articles from Asia, Africa, the Pacific and Central and South America. Articles on display include textiles, Musical Instruments, Toys, Jewellery, Cards, Christmas Decorations, Nativies, Homewares and more.

Trading Partners is a community organization which supports economic development for the poorest people of the world by promoting Fair Trade. It provides a wider market for thousands of people (mostly women) who make use of traditional craft skills in order to generate income.

Admission is free and there is good parking at the back of the hall.

On Sunday morning, trading Partners will take part in the 9am and 10.45am services at the uniting Church.

Enquiries: Judy telephone 5257 1355

### CULTURAL THREADS

Contemporary Handcrafts Display and Sale  
Uniting Church Hall  
High Street, Drysdale

Saturday 2nd December 10am - 5pm  
Sunday 3rd December 10am - 1pm

*Beautiful handmade articles from*

**ASIA**

**AFRICA**

**THE PACIFIC**

**CENTRAL & SOUTH AMERICA**

Come to buy and learn about the  
People and traditions behind the crafts

Great ideas for Christmas  
Free Admission - All Welcome.

*Brought to Drysdale by Trading Partners  
Making a Difference in the Lives of Families  
Around the world.*

**FAIR TRADE IS THE BEST AID**

## PRE-PAID MOBILES NOW AVAILABLE

Save yourself a trip into town by getting your Optus or Vodafone Pre-Paid Cards and Mobile Phones right here  
In Drysdale.

- No phone bills
- No Credit checks, just pay as you go.

**AVAILABLE: Shop 1/8 High Street (Arcade)**



Ph: 52 513 491



Bellarine Christian Books - dealers for Aim Tel Communications

# WHAT'S ON AT CLIFTON SPRINGS PRIMARY?

Plans are in full swing for our second annual "Bellarine Open Gardens" day on Sunday November 5<sup>th</sup>. We have five gardens open this year and are set for a great day. Devonshire teas, coffee and cake and wine and cheese are available for purchase.

## Gardens open are:

1. Mrs. Dawn Wade's –  
80 Avila Road, Curlewis;
2. Neil & Kerrie Muhlan's  
Alinga Nursery & Private Garden.  
Jetty Road, Clifton Springs  
(Melways 238 B 10);
3. Phil & Wendy Winfield's  
18 Marabooro Avenue,  
Clifton Springs (Melways 238 C 5);
4. Mrs. Joan Hartrick's  
20 Coronae Drive, Clifton Springs  
(Melways 238 G 3);

5. Michael Allen's –  
Eggleston Street, Ocean Grove.

This term all grade five children ventured to Maldon and spent two nights staying at Derby Hill Police Camp. They participated in a range of activities including panning for gold, making damper and bike riding.

This term our school entered the State School Garden Awards and received an Achievement Award. Many hours were spent by parents, students and staff, in developing our lovely gardens.

Also construction of shelving in our shadehouse is almost complete in preparation for students to be given the opportunity to grow plants. The layout of ceramic tiles made by students in terms 2 and 3 will begin soon with the official opening planned for December.

Finally our annual school concert will be held on Wednesday December 13<sup>th</sup>. The theme this year will be "Clifton Springs Primary School Goes to the Movies". This will be a night not to be missed. For enquiries please phone the school on 5251 3581.

Kerryn Driscoll  
Teacher.



## CR. ROB BINNIE, BELLARINE WARD COUNCILLOR.

Summer is approaching and as the days get longer I hope you take advantage of getting out and about enjoying our great environment.

While you are considering ways to enjoy the warmer weather and daylight savings please take the opportunity to experience the new Carousel on Waterfront Geelong.

This is a major investment in Geelong's future and already has produced smiles on the faces of thousands of our kids, and a fair few adults too. It is a marvelous example of restoration and is a terrific community asset.

The onset of summer also means one of our regions greatest strength shines through. Events.

Again this year we have plenty to look forward too on the water, the land, and in the air.

The City is a major financial supporter of the 2001 Australian International Airshow at Avalon Airport. If you haven't had the chance to experience this wonderful local event, make sure you get along in February.

Others to look out for are Carols by the Bay at Waterfront Geelong,

the Waterfront Festival, Pako Festa and many more.

Also as we head toward Christmas keep an eye out for the City's new magazine and 2001 edition calendar.

Take care until next time.



Cr. Rob Binnie  
P.O. Box 104,  
Geelong. 3220.

Get Setup & Trained with  
**M.Y.O.B.**



PHONE 1800 645 545 NOW  
For a FREE no obligation consultation.

**BELLARINE CHRISTIAN BOOKS and RESOURCES**



- Cards
- Books
- Bibles
- Gifts
- CD's, tapes, videos
- Non-alcoholic wines

Shop 1, 8 High Street, Drysdale.  
Ph: (03) 5251 3491 Fax: (03) 5251 3495

**Quality Butcher**  
PETER HOMMELHOFF

**HOMMY'S QUALITY MEATS**

For something new and different

16 High Street, Drysdale 3222.  
Phone: 5251 2270

# WINE DRIVE

SpringDale Community Cottage and Bannockburn Cellars are conducting a charity wine drive. The wines are offered at a special price by Bannockburn Cellars (they will make a generous donation to the Cottage).

*A good chance to get your  
Christmas and holiday supplies.*

Closing date – Friday 17<sup>th</sup> November

Delivery expected – Friday 1<sup>st</sup> December at SpringDale  
Community Cottage.

Details on order form.

## WINE DRIVE

*All wines listed are cleanskins.*

### *Sparkling*

**Limited Release Reserve Brut  
(Vic.)      \$14.90      \$8.40**

Fantastic fizz! Clean and fresh, with a slight richness and creaminess on the finish. A very popular drink.

**McLaren Vale/Langhorne Creek  
Sparkling Shiraz NV**

~~\$13.90~~      \$9.95

A big, rich, youthful sparkling Shiraz that has been made with the traditional bottle fermentation technique and has been “liquored” (topped up) with aged reds and old vintage ports. Truly a unique, robust Aussie style that is perfect to serve icy cold with a huge range of food styles.

### *Whites*

**Hunter Valley/Cowra Chardonnay  
1998      \$16.95      \$9.99**

Easily one of the best Chardonnays we have seen over the last few years. Deep, bright, yellow-straw colour. Its ripe bouquet of fresh pineapple, white peach and grilled cashews leads to a full, rounded palate that's smooth, textured and very drinkable.

**Echuca Riesling 1999**

~~\$15.90~~      \$8.99

Pale straw in colour, with fresh aromatic “hay and citrus” notes on the nose. This classy wine shows intense fullness of flavour with crisp, citrus fruit nuances and floral undertones combining well for a lengthy and satisfying finish. Brilliant for fish or Asian food. Will cellar for 2-3 years.

**Barossa Valley Semillon 1999**

~~\$12.95~~      \$6.95

This is a delicate style of unwooded Semillon, with some austerity. The nose has lemony, minerally aromas and the palate has lightly herbal and lemony flavours of good intensity and excellent length. It should age well, but already drinks nicely with cold seafood salad.

### *Reds*

**Langhorne Creek Big Red Blend  
1999      \$14.95      \$9.99**

Deep purplish in colour, this has a ripe and attractive bouquet with soft berry fruit, earth and pepper. The palate has cherry and blackcurrant fruit with a touch of savoury, gamey characters and dry tannins. Perfect for the BBQ. Will cellar up to 2 years.

**South Australia Cabernet/Shiraz  
1999      \$16.90      \$9.99**

This is a fruity young red without too much oak influence. The colour is a deep purple-red; the aroma is youthful, with fresh young cherry aromas and a hint of plum and spice. The palate is again fruit-driven and has good depth of flavour, finishing with well-balanced tannin. Cellar up to 3 years.

**Lower Hunter Dry Red 1999**

~~\$15.90~~      \$7.99

A soft, flavorsome red which drinks well now. The colour is a deep ruby and with a velvety soft texture. The rich, ripe fruit concentration and slight “rustic regional charm” blend well to yield a youthful, gently oaked, medium bodied red that finishes smooth and is eminently drinkable with a wide range of foods. Great with pink lamb chops! Should cellar well for a further 2-3 years.

### *Fortifieds*

**South. Aust. Tawny Port**  
~~\$11.50~~      \$6.99

Great value port! The bouquet offers raisined grapes and assorted dried fruits, with a hint of vanilla. Its sweet on the tongue with just enough aged character to add interest.

**Buller's Reserve R'glen Muscat**~~\$16.95~~ \$7.95

Classic Rutherglen Muscat that just oozes flavour. The nose has strong dried raisin and rich rancio aromas (a nutty character that comes from long barrel maturation). Very sweet, rich and luscious yet fresh and fruity. Plenty of body and a finish that goes on forever! Perfect for winter night-caps in front of the fire.

**Beer****King Lager**~~\$3.50~~ \$2.75

Brewed in Geelong under contract for a company based at Little River. The style is very similar to Crown Lager, hence the name. Clean and fresh without being too bitter.

**Hofbrauhaus Lager**~~\$3.70~~ \$2.70

Again, brewed in Geelong under licence to the German company of the same name. Made under the strict German quality control regulations (dating from 1589) and supervision

of the German brewers, this beer has all the flavour you would expect from an imported beer.

**James Squire Pilsener**~~\$3.30~~ \$2.45

A new beer that comes from Sydney and one that has become a staff favourite! It's brewed in old copper kettles using imported hops and select malts to produce a Pilsener with a remarkably creamy head, sparkling golden brilliance, a distinctive floral hop aroma and an enticing spicy finish.

**SPRINGDALE COMMUNITY COTTAGE****ORDER FORM**

Send orders to SpringDale Community Cottage

Attention: Joy Wallis.

14 Princess Street, Drysdale. Phone: 5253 1960

|                                     |        | No.<br>Bottles            | \$<br>Total     |
|-------------------------------------|--------|---------------------------|-----------------|
| Limited Release Reserve Bruit (Vic) | \$8.40 | _____                     | _____           |
| McLaren Vale/Langhorne Creek        |        | _____                     | _____           |
| Sparkling Shiraz N.V.               | \$9.95 | _____                     | _____           |
|                                     |        | _____                     | _____           |
| Hunter Valley/Cowra Chardonnay 1998 | \$9.99 | _____                     | _____           |
| Echuca Riesling 1999                | \$8.99 | _____                     | _____           |
| Barossa Valley Semillon 1999        | \$6.95 | _____                     | _____           |
|                                     |        | _____                     | _____           |
| Langhorne Creek Big Red Blend 1999  | \$9.99 | _____                     | _____           |
| South Aust. Shiraz/Cabernet 1999    | \$9.99 | _____                     | _____           |
| Lower Hunter Dry Red 1999           | \$7.99 | _____                     | _____           |
|                                     |        | _____                     | _____           |
| South Aust. Tawny Port              | \$6.99 | _____                     | _____           |
| Buller's Reserve R'glen Muscat      | \$7.95 | _____                     | _____           |
|                                     |        | _____                     | _____           |
| King Lager                          | \$2.75 | _____                     | _____           |
| Hofbrauhaus Lager                   | \$2.70 | _____                     | _____           |
| James Squire Pilsener               | \$2.45 | _____                     | _____           |
|                                     |        | _____                     | _____           |
|                                     |        | <b>Total Amount Owing</b> | <b>\$</b> _____ |

Name: \_\_\_\_\_

Phone: \_\_\_\_\_

Payment Details: CHEQUE  CASH  VISA  M/CARD  B/CARD  AMEX  DINNERS 

Card No:                    /                    /                    /                                       Expiry:                    /

Signed: \_\_\_\_\_

PLEASE MAKE ALL CHEQUES PAYABLE TO BANNOCKBURN CELLARS.

*The SpringDale Messenger*

Page 13

# HARVEY WORLD TRAVEL

We are delighted to offer a wonderful new opportunity to embark on travel adventures as a single traveller.

For a short period we are offering free membership to this exclusive club. The concept of the club is not about "singles", it's about people who travel alone or don't travel because you would be alone. You may have a partner who doesn't like traveling, you may be single and want to meet new people, you may just want to save money by not paying single supplements or just to have the security of one or many traveling companions.

Initially we have 2 great offers for our club members. Firstly de-

parting November 25<sup>th</sup>, 2000 a 10 day Tasmanian discovery tour and an 8 day Tropics and Reef Tour, Departing 26<sup>th</sup> December, 2000. Both traveling with the ever-popular AAT Kings. These will be followed by a terrific Bangkok shopping tour and a European tour departing August, 2001.

To join the Single Travellers Club simply take a minute or 2 to pop in to our office and fill out the membership form or phone us and we'll happily send it out.

Often the inclination to explore new destinations on ones own, is quite exciting, yet somewhat frightening too. As a special member of "single travelers", you no longer

have to contemplate doing it on your own!

You can do it with us!!

Discover new destinations, create unforgettable travel memories and make great friends as part of our single travelers club. With exclusive package deals to various destinations, our members can enjoy the freedom of independent travel and the luxury of accompanied group experiences.

So, why wait any longer? Join Today.

Carol McCarthy.  
Harvey World Travel  
Drysdale.  
Phone: 5251 1125.



**HARVEY**  
world travel  
*The Travel Professionals*

**YOUR LOCAL TRAVEL AGENT**

- local tours
- international and
- domestic flights
- coach tours
- package holidays
- travel insurance

**SHOP 2A**  
**6 HIGH STREET, DRYSDALE.**  
**TELEPHONE: 5251 1125**  
**MOBILE: 0417 129702**

## DRYSDALE LADIES PROBUS CLUB INC.

REG. NO. A0021357E

Our September meeting had an "Olympic" theme with three Rhythmic Gymnasts - Her Majesty (decked out in an op shop suit) and a medal bearer - It was a lot of fun - and right in the middle of the Olympics (the day of Cathy Freemans Run). Once again Bev Mason's put this idea in fruition.

Our guest speaker Jeanette Sharp from Ocean Grove Coach Lines provided us with many travel hints. This one took my fancy -

Wine Cask Bladder - Wash out and fill with air and use as a pillow. Fill with hot water for cold feet, fill with cold water and freeze - handy for esky. Pretty smart eh?

We are off to the pictures to see "The Dish" at Village Theatre - 19<sup>th</sup> October.

A shopping trip is planned for 1<sup>st</sup> November, 70 outlets under one roof - at Moorabbin - following up by going to Blooms Fashions, Balaclava.

Those not feeling too well I hope it won't be long before you are back on track.

Hoo Roo for now,  
Jeanette Derham.

**FREE INITIAL CONSULTATION**

- ▼ ACCOUNTING & TAXATION SERVICES
- ▼ SMALL BUSINESS CONSULTANTS

**FTA**  
ACCOUNTANTS & BUSINESS ADVISORS

**5253 2992**

**CRN. OF SPRINGS RD. & HIGH ST, DRYSDALE**

**BEE SWARMS COLLECTED.**

**L. Beck 5251 2938.**

**Chui Yuan** 酒翠家園  
Chinese Restaurant (B.Y.O.)

TAKE AWAY & HOME DELIVERY  
FUNCTIONS & GROUP BOOKINGS A SPECIALTY  
QUALITY & CLEANLINESS ARE PARAMOUNT  
REASONABLE PRICES  
\* \$6.00 LUNCH SENSATION MENU

**Ph. 5253 1788**  
Shop 2, 26-28 High St. Drysdale, 3222.

**NEEDLE SYRINGE PROGRAM**

Are you using drugs?  
If so, then protect yourself from HIV and Hepatitis C.

Obtain clean fits from the Drysdale Community Health Service  
21 Palmerston Street, Drysdale.  
**A CONFIDENTIAL service.**  
**No questions asked.**

**V.I.P. HOME SERVICES** LAWNMOWING DIVISION

**CARL OLSSON - Franchisee**  
**B.H.: 13 26 13 A.H.: (03) 5253 2032**  
**MOB.: 041 612 7 862**

- Complete Garden Maintenance
- Gutter Cleaning
- Rubbish Removed
- All Garden Needs.

**\*FREE QUOTES**  
**\* FULLY INSURED**  
**\* ALL WORK GUARANTEED**

# "Another great year for the Swan Bay Integrated Catchment "Management Project."

It has been a great year for the Swan Bay Integrated Catchment Management Project. With one pinnacle being the winning the Victorian BP Landcare Catchment Award by the Committee.

The community driven project addresses a wide range of land and waterway degradation issued to improve the health of Swan Bay Catchment. Project funding of \$100,000 during 99/00, came from the Natural Heritage Trust, Coast Action/Coast Care, Corangamite Catchment Management Authority, Tree Victoria, Parks Victoria, Threatened Species Network, Corangamite Waterwatch, Alcoa of Australia and Myer Foundation. We would like to thank them for their support of the project; in particular we would like to thank Alcoa of Australia for their

generous and continued support and flexibility.

We like to keep the public informed of all of our activities such as: Orange-bellied Parrot habitat protection, catchment revegetation and bio-diversity protection projects, weeds, Waterwatch, etc. so they can participate.

Local schools have featured highly in our activities, Bellarine Secondary College assisted in the revegetation of the Bonnyvale Rd wetlands, revegetation adjacent to the Drysdale Basin, rearing biological control agents and monthly Waterwatch monitoring. St. Aloysius Primary School assisted in the revegetation of 2 sites – the Bellarine Rail Trail and a rural waterway.

This year a total of 23.6 hectares of land was fenced and revegetated with indigenous vegetation along 4.3 kilometres of waterways, two wetland reserves between Collendina and Pt. Lonsdale were surveyed for protection and a boardwalk built at Edwards Point State Faunal Reserve, St. Leonards.

We are always looking for more projects, especially those protecting remnant vegetation and waterways and linking wildlife corridors. Another round of funding for projects is currently available, contact the Catchment Officer.

Co-operation, commitment and hard work are the keys to the success of the Project.

For further information, call Steven Smithyman on 5229 8432 or 0417 231853.

**Small Business Start-up Package** includes:

- MYOB Accounting Software
- Installation
- Tailored Set-up
- Overview of MYOB
- On-Site Training, Troubleshooting and Manuals @ a Rate of \$45 per hour + GST

(With Payroll \$899)  
\*Package price GST Inclusive

**Small Business Start-up Pack \$699**

0409 572526

**Joanne Marshall**  
Web: www.joannemarshall.com.au  
Email: joanne@joannemarshall.com.au

**MORTIMER PETROLEUM**

**PETROL STATION & CONVENIENCE STORE**  
97 High Street Drysdale Phone 5251 2603  
Petrol, Autogas Bait & Fishing Supplies

**CAR WASH**  
Wash \$3.00 Wash & Polish \$4.00 With Petrol  
Open 6.00am-10.00pm

**Spring is Here**

Come and see the colors and smell the fragrances of

**Spring.**

**Alinga Nursery**  
Corner Jetty Rd & Railway Cr es Drysdale.  
Open 7 days. Ph 52531299

**MAGGIE GOVE N.D.**

**Bowen & Natural Therapist**  
Member of A.N.T.A.

**Drysdale: Clinic 03-5251 1188**  
**Ah 03-5253 2230**

**BELLARINE FENCING Co**

For all your fencing & gate needs,  
- Picket - Paling -  
Heritage Wire.

Phone: Andrew & Gayle Baylis  
on 5251 3090 or 0417 544 887

**DIZZY TOYS**

Selected Character Gifts, Backpacks and Bags

We would like to say a sincere thanks to everyone for their support over the past two years and we look forward to seeing you in our new shop at:

**Shop 5, 123, Pakington st, Geelong West. Tel - 5222 4886.**

**Bellarine Hearing Services**

**Audiologists & Hearing Aid practitioners**

- Professional hearing assessment
- OHS accredited provider For eligible pensioners
- Quality hearing aids

**PH 5229 6407**  
\* NOW AT DRYSDALE EVERY TUESDAY

**DRYSDALE VILLAGE DRYCLEANERS**

Drycleaning, repairs & alterations also Shoe Repairs.  
Drycleaning 3 Garment Special conditions apply.

**HOURS 7.30 - 5.30 Weekdays.**  
9 - 12 Saturday.  
21 CLIFTON SPRINGS RD, DRYSDALE.  
PHONE: 5251 3990.

**Salvation Army Family Stores**

**Mortimer St. Drysdale**  
**Ph. 5251 2475**  
**Plenty of Bargains**  
**The Place to Shop**  
Come and see us We are here to Help You

## H.E.L.P. in on its way to the Bellarine Peninsula ... AGAIN!

Are you feeling tired, stressed, lethargic? Are you overweight and fed up with trying new "diets" that never work? Are you one of the millions of Australians who believe they are eating a "balanced diet" but in fact are missing out? Are you concerned about your health? Do you feel you should know what to do and shouldn't need to ask for help? Do you just need some moti-

vation to get going and care better for yourself in the new millennium?

THEN .... Our Healthy Eating and Lifestyle Programme is for you!

Commencing Thursday 2<sup>nd</sup> November, for 6 weeks

Time: 9.30a.m. – 12.00 midday.

Venue: Portarlington C.H.C. Fenwick Street.

Cost: \$5.50/session (concession negotiable) – Partners welcome at no extra cost.

Bookings (essential)/enquiries: 5258 0888.

## THE BELLARINE AGRICULTURAL SOCIETY

The Bellarine Agricultural Society has a new venue for the Show and the monthly meetings. The Show will be held on Sunday the 11<sup>th</sup> of March, 2001 at the Portarlington Reserve Sproat Street, Portarlington and the monthly meetings are held at the Royal Hotel, Portarlington on the 2<sup>nd</sup> Thursday of the month from 6pm onwards.

New members welcome, please contact Maree Stringer on 5248 5963 any time.



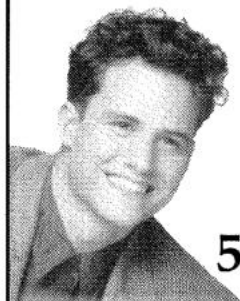
### WISE GUYS MENS HAIRSTYLIST "Its the cut that counts"

So come and see  
Stan, Wendy, Manfred  
for all mens and boys styling  
\* STUDENT AND PENSIONER \*  
DISCOUNTS

No appointment necessary

Shop 1,  
Wyndham  
Street,  
Drysdale.

5253 2206



## BECOME A VOLUNTEER

DO YOU HAVE A FREE MORNING ONCE A WEEK  
OR ONCE A MONTH?

THE CITY OF GREATER GEELONG REQUIRES  
VOLUNTEERS TO DELIVER MEALS ON WHEELS.

The meals on wheels service delivers meals in the Geelong & Bellarine area to frail, aged and disabled citizens.

IF YOU CAN HELP IN THE DRYSDALE, OR CLIFTON  
SPRINGS AREA

PLEASE CALL BEV FITZALAN ON PH: 5251 2291.

## INSTYLE BLINDS

QUALITY BLINDS AND CURTAINS  
AFFORDABLE PRICES

## OUTSIDE AWNINGS

(Free measure & Quotes      Shop-at-home service)

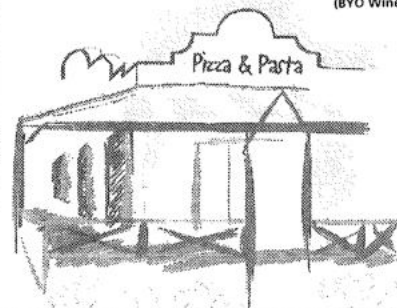
- Venetian Blinds
- Vertical Blinds
- Pleated Blinds
- Holland Blinds
- Awnings
- Drapes
- Repair & Maintenance Service

Unit 2/31 Murradoc Road, Drysdale 3222.

Ph: 5251 1195

Drysdale Village  
**Pizza  
Pasta**  
Restaurant

Fully Licensed  
(BYO Wine Only)



Telephone 5251 3937

Inquire within for our latest Delivery Specials  
Open 7 Days A Week  
Dine-In • Take-away • Home Delivery  
Shop 7/26 High Street Drysdale

Home Deliveries to  
Drysdale • Clifton Springs • St Leonards • Portarlington • Leopold



# SHARING THE NEWS ABOUT DRYSDALE PRIMARY SCHOOL!

During term three, Parents, Teachers and Students worked together with the assistance of Koori artist, Mr. Brian McKinnon, to beautify our school. Several posts outside the library have been painted in bright, Aboriginal colours and patterns. This really gives this front area a lift, while also acknowledging Aboriginal culture as a significant part of our community. The posts have been named "The Wathaurong Painted Posts." Thank-you to all those who were involved.

Towards the end of the term the annual school concert involving all students, was held. With a huge team effort from Teachers, Parents and Students, both nights were a success. Audiences seemed entertained and satisfied to see the students performing and using a range of skills, including singing, dancing, acting and playing musical instruments. The annual school concert is a wonderful opportunity for students, as it allows them to gain confidence and experience in front of a live audience.

To conclude term three, Drysdale Primary School held a "Mini Olympics Day." We had an opening cer-

emony where each grade represented a country competing in the games. Twenty countries dressed in colourful costumes, chanted and danced to their chosen anthems. Our special guest Mr. Billy Brownless introduced each competing country, before officially opening the games. A sausage sizzle lunch was provided for the children. Thank-you to Mr. Green and Mr. Campbell for planning the day and also to the marvelous response by parents and others who assisted with this day. As a result of this day, students developed an awareness of the Olympic Games and the money raised by the children, through sponsorship will now contribute to a fitness track for our school.

Term four is already flying by. The first few weeks of the term focused on school camps for Grades 3-6.

The Grade 6 camp to Canberra was a terrific experience for students and teachers alike. The week had a fully itinerary, every day providing many memorable experiences. Management of the accommodation complex congratulated our students on their courtesy and social abilities.

This is something to be very proud of. Well done to all of Grade 6.

The Grade 5 camp to Maldon was also an enjoyable and beneficial experience. This camp allowed students to use their bike-ed knowledge as they participated in lots of bike riding.

Grade 4 will soon travel to South West Victoria, where they will stay at camp Kangarooie, while the Grade 3 students are looking forward to a camp at Sovereign Hill.

On the 19<sup>th</sup> of October, the grade prep students visited Werribee Park. Here they were able to see and learn about some very interesting animals. This relates to the animals and life cycles theme they are currently studying. Grade 1 students are looking forward to a visit to the Melbourne Zoo in mid November. Here they will learn about the life cycles of Butterflies and Frogs, as well as having an opportunity to view a range of animals and notice their characteristics.

Amanda McPherson  
(Teacher).



**Clifton Springs**  
GOLF CLUB

Clearwater Drive,  
Clifton Springs. 3222.  
Ph: 5251 3391 Reg: A0006439X

*Play By The Bay*

- Golfing membership now available
- Social groups & Trade days welcome
- Golfing Tuition available
- Meals available 7 days/nights with Chef Neill Sharer (bookings essential)
- Live entertainment
- Tabaret Venue - 40 machines, latest games

**Your complete entertainment venue**

**For bookings and further information  
Telephone the Club on 52 513391**

## FLEA BUSTERS



**MOBILE  
DOG  
WASH**

**Clipping, Bathing  
& Grooming**

"A complete service  
by the true Professionals".

**5281 1711**

Professional Service For All Breeds At  
Your Own Home

# Take Off Weight Naturally CLUBS OF VICTORIA

**IF YOU HAVE A  
WEIGHT  
PROBLEM WE MAY  
BE ABLE TO  
HELP YOU**

Weekly meetings are held at:  
DRYSDALE UNITING  
CHURCH HALL  
(at rear of Church)

Time: 10 am on Mondays

## TOWN CLUBS OF VICTORIA

is a community service, voluntary, organization to encourage weight loss through weekly meetings,

which include weigh-in and group therapy. Members are encouraged to adopt a healthy controlled eating style and take up suitable exercise – no artificial methods are permitted.

## TOWN CLUBS OF VICTORIA

provide a non expensive, encouraging environment that raises your self esteem as you work towards, and then maintain, your goal weight.

For more details contact:  
**MARY FORD**

Phone: 5251 3763

# SPRINGDALE SINGERS

Spring is here and music is in the air! Where? At the Drysdale Community Hall every Tuesday afternoon. The SpringDale Singers were formed three years ago and membership has steadily grown. It is a non-performing group based on singing for enjoyment. A wide variety of music is presented ranging from simple ditties to four part choral works. Our current effort is learning songs from the show "Fiddler on the Roof". Think you might be interested? Like to know more? Come to our Finale for this year on **Tuesday 5<sup>th</sup> December at 2.00pm** and enjoy a cup of tea afterwards. "Second Alto"

# MONSTER BOOK SALE

St. James' Anglican Church, Drysdale, is having another Monster Book Sale on Saturday 6<sup>th</sup> January, 2001, 9am to 3pm. Books categorized for easy selection. Proceeds to St. James' activities. Enquiries: 5251 2594.

**STAMPING HOUSE**  
ABN 82 881 416 867

Send professional hand made cards this Christmas!

Ask for Elizabeth George

Ph: 5251 1301

Personal friendly service - classes at times to suit - all just \$15

**BUILDER**

HIA MEMBER **Paul Jones** Registered B.P.B.

Ph. 52 513934

NEW HOMES ~ EXTENSIONS ~ AIR CONDITIONING  
Mobile 0419 354259

**BELLARINE**  
VETERINARY PRACTICE

7 Palmerston Street, Drysdale.

**Hydro Bath and Grooming**

NOW AVAILABLE



For Enquiries  
Ph: 5253 1393 or 5248 2009

**CAFÉ A BICA**



Excellent Coffee!

Morning & Afternoon Teas  
Light Lunches & Snacks  
Cakes, Slices & Homemade Muffins  
Homemade Quiches & Lasagne  
& Much More!

Drysdale Village Shopping Centre (Opposite Safeway)  
Open Mon-Fri 9-5 Sat 9-2  
Ph 5253 1200

**CHARLES CRAWFORD  
& SONS**

**FUNERAL DIRECTORS**

CNR PORTARLINGTON &  
COPPARDS RDS  
24HRS GEELONG 7 DAYS  
FOR SPECIAL CARE AND THE FINEST  
FACILITIES  
WITHOUT FINANCIAL STRESS

**PH: 5248 5500**

Complete Funeral Arrangments  
From \$2,200.00 (INC G.S.T)  
**PREPAID & PRE-ARRANGED  
PLANS AVAILABLE**

# LADIES PROBUS CLUB OF BELLARINE INC.

## REG. NO A14696T.

Our Club is Vibrant, much to the delight of the first President Pat Herrick.

It seems quite natural to many to be able to organize many things, with no signs of nerves. The special event at the meeting today, was the Fashion Show. This was a most delightful show, of fashions not usually seen by us. The garments looked good on the models, and of course Margaret Wild looked good in the larger lady fashions. Hope her husband has a chequebook handy. The garments were brought from "Nautical Fashions", Hesse Street, Queenscliff.

This display followed a Devonshire Tea, which seems to be an Annual Event for us, and we enjoyed the scones, jam and cream, the same as ever.

Last months speaker was Pastor Carla Evans, who gave a very moving account of the Vietnam Veterans. She is a caring lady in a job that was so sad.

Next months speaker will be Janette Sharpe, who will talk on Traveling with Diabetes.

The Octogenarian Joyce Gilmour, who fills her days with doing something for others with a smile, recently told me that she had rather a strange happening the other day in her car. The windscreen suddenly went black and she pulled over to the side, whilst she waited for it to clear, it was to her horror a swarm of bees, so she didn't get out and wave them goodbye, she switched on her wipers and they got squashed. Apparently bees like the colour of windcreens with the sun

on them, and so settled there. Everything happens to Joyce!

Many members are currently having investigations and treatment for their ailing conditions, so we all get updated each month.

Today's lunch was at Rosies in Drysdale, usually a good venue.

Next month it is to be at Katialo in Portarlington. This is the old Delphinus restaurant.




The outings to Tesselaars Tulip Farm and Olinda Gardens are planned for Friday October 27<sup>th</sup>. That should be good.

Peninsula Players next production will be on Wednesday 15<sup>th</sup> November. The play "Money and Friends" is an Australian work so should please.

All for this time.  
Yours in friendship.  
Iris (Liz) Tolton.

## SPECIAL ANNOUNCEMENT

We all know how busy December is – last minute gifts, cards to send, and puddings to make. How about saving one afternoon to celebrate the coming of Christmas. Drysdale Churches are holding their Advent Carol Service on the Village Green on December 3<sup>rd</sup> at 5.30pm. Please write this date on your calendar. We'd love to welcome you.

|  |   |
|--|---|
| <b>HOMES &amp; LAND WANTED.</b>  | <b>THINKING OF BUILDING?</b>  |
|   |    |
| <p>We urgently need homes And land to sell to our list Of unsuited buyers. If you Are considering selling Contact me for assistance And professional advice</p> <p style="text-align: center;"><i>Trevor McArdle</i><br/><i>Managing Director.</i></p> | <p>Bayshore First National have been appointed sole marketing agents for this exclusive range of award winning affordable homes. Call in for plans &amp; prices</p> <p style="text-align: center;"><i>Investment packages Available</i></p> |
|  <p><b>Bayshore</b> FIRST NATIONAL REAL ESTATE</p>  |   |
| <p><b>26 High Street, Drysdale. Telephone 5251 2610</b></p>  |   |



Lifeline Shops have a wide range of all the following items



Our stores are located at:

|                       |              |           |
|-----------------------|--------------|-----------|
| 16 Gordon Avenue      | Geelong West | 5229 8765 |
| 152 Bellarine Highway | Newcomb      | 5248 3800 |
| 19 Murradoc Road      | Drysdale     | 5253 2168 |
| 5/2A Gordon Avenue    | Geelong West | 5222 6418 |

(Furniture at 5/2A Gordon Avenue only)

**LIFELINE ALSO SELL INDUSTRIAL RAG RING 5222 6418 FOR A PRICE**

# USE AMBULANCE IN AN EMERGENCY

Rural Ambulance Victoria is reminding the public to ring 000 for an ambulance when someone needs to be taken to hospital in an emergency.

"In the majority of cases using a private car instead of an ambulance to transport someone to hospital in an emergency can place your own life as well as that of the person being transported in danger," said Area Manager Tony Pearce.

"In an emergency, it is important to remain cool headed, call 000 and ask for an ambulance."

Mr. Pearce said there were many reasons why people should not be transported to hospital in private vehicles.

"The nature of the patient's injuries may make it difficult to load them into a car. More importantly, the chance of increasing the severity of the patient's injuries is extremely high and could result in the patient becoming a quadriplegic."

"This is one of the reasons Rural Ambulance Victoria uses specially designed vehicles and equipment to enable a patient to be loaded safely."

"Once an acutely ill or seriously injured patient is in the car, they generally require close observation and monitoring during the trip to the hospital emergency department. This is best left to Ambulance Paramedics who have been specially trained for this purpose."

Mr. Pearce said the driver of a private vehicle was not legally authorized to drive under emergency conditions.

"The driver of a private vehicle may become anxious because of a patient's condition and drive too fast, creating an unnecessary hazard or an extremely dangerous road situation for themselves, the patient and other road users."

"Using an ambulance for emergency transport provides positive benefits for the patient, including stabilization before transport, ongoing treatment by qualified health care professionals during transport and forewarning the necessary medical facility of the patient's impending arrival."

"Using an ambulance in an emergency is common sense and can save

lives, while transporting patients in private vehicles can often place other lives at risk."

Mr. Pearce said "Subscribers to Rural Ambulance Victoria did not pay for using the Service in an emergency as the bill is covered by the annual subscription membership."

"The cost of a subscription is not high, \$35 a year for singles and \$70 for families; and it's a small price to pay for what could be a life saving trip."

"The Ambulance Service Subscription Scheme provides emergency care and transport as well as non-emergency service and access to specialist services such as the air ambulance, new born emergency transport, and the mobile intensive care paramedic service."

"One of the benefits of being a subscription member of the ambulance service is that any trip in an ambulance to or from any medical treatment place in Australia is free."

Mr. Pearce said subscription could be paid at any Post Office, or by phone by calling 1300 366 141.

New subscriptions can be arranged by phoning 1800 648 484.

For further information Contact:

Tony Pearce,  
Area Manager,  
Rural Ambulance Victoria Area 1.  
Phone: 03 5228 2806.

**Kerry's  
Nail Elegance**

**Acrylic or Gel Nails!**

Try Bali daisies to decorate your nails for something different.

Come into a relaxed, friendly environment.  
Sterilised equipment used.

By appointment only.  
**Ph: 5253 3107**

Just a short drive from Drysdale shops.  
Amarina Rd Clifton Springs. Melways map ref 238 E.7

**SOLICITOR  
&  
CONVEYANCING**

**Basil Ristevski LL.B**

**5251 3453**

## CARROLL'S WOODCRAFT SUPPLIES

66 Murradoc Road, Drysdale 3222  
Ph: 03 5251 3874 Fax: 03 5251 3864  
E-mail: carrolls@pipeline.com.au

CRAFT SUPPLIES.  
MACHINERY & HAND TOOLS .  
WOODTURNING & CARVING &  
PYROGRAPHY (WOODBURNING) TUITION.  
PRODUCTION AND ONE OFF TURNING.  
SAW SHARPENING SERVICE.  
POWER TOOL REPAIRS.

*Linda Stephens'*  
**Hairdressing**

60 Buccleugh St., Drysdale

**BY APPOINTMENT ONLY**

- I offer you a professional environment using quality Products at a competitive price.
- I have 19 years experience with current trends in colouring, Perming, cutting and styling for the whole family.

Phone Linda  
**5253 3039**  
for an appointment

# DRYSDALE SENIOR CITIZENS CLUB.

There is to be a special general meeting held at the clubrooms on Monday October 30<sup>th</sup>. This is to appoint a new President and also a Treasurer due to both positions becoming vacant on that day. Therefore we will have two new office bearers when this publication is distributed. More details on this in the November Issue, due out on December 15<sup>th</sup>.

We are getting a nice little influx of new members, which is good to see. The gents are really enjoying their two afternoons of Pool/Snooker on Wednesday and Fridays. The Concert Party will be putting on a show after the Christmas Luncheon, which is to be held at the clubrooms (by popular and overwhelming demand by the members) on Monday December 11<sup>th</sup>. The Ladies Guild of St. James will be catering for us which means we can all look forward to a lovely meal. Thank you

ladies for obliging us. This day is for members only.

A day trip has been organized for Wednesday November 1<sup>st</sup>. to Blackwood, Daylesford and Newbury, this is to include a two course lunch. Irene and Doreen are the trip organizers and no doubt there will be more of the same in the future. Watch for details at the club and also in the Echo. Non-Members are always welcome to these outings. I will report on the November 1<sup>st</sup> trip in the next edition.

If you are 50 plus and new to the area why not drop into the clubrooms to see what we have on offer, our aim is to please and welcome all.

The club is open each Weekday from 12 noon to 4pm with the exception of Tuesday.

Get well messages to all our sick members, God speed and come back to us soon. Bless you all.

Until next issue,  
Yours sincerely,  
I.M. Astill.

## CARPET STEAM CLEANING

MARICK CARPET CLEANING

DICK BOLAND

Ph 5259 2217

Mobile 0412 517 065

Carpets, Lounge Suites

Car Upholstery Stain Guard Available

FREE QUOTES

# INVESTMENT PROPERTY

## Dear Landlord,

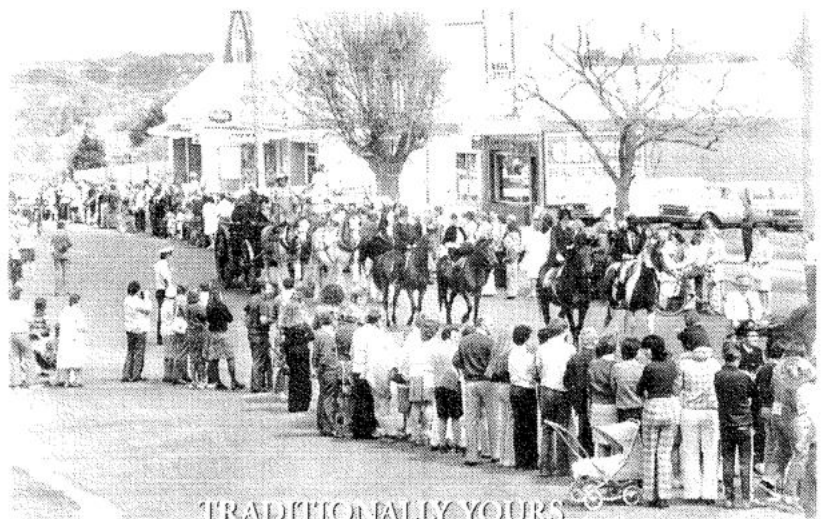
Do you want to achieve the best possible return on your investment property?  
Naturally, you do! Your local

## C.J. Keane & Co

office can assist you in achieving this aim by offering you the services of a Property Manager who is dedicated to protecting both the physical buildings that comprise your investment as well as the income stream that it generates. A Property Manager who will look after your Property as if it were their own!

- We conduct a regular inspection and report back to you.
- All prospective tenants must pass reference investigations.
- Our offices are computer linked.
- Rental arrears are followed up daily.
- We regularly undertake rental reviews.
- Rental Managers regularly attend ongoing training courses to keep them up to date with management techniques and legislation.
- Rents are paid via periodical debit.
- Quick disbursement of payments to landlords.

Contact us today for a free and confidential appraisal on your property.



... For more than 60 years C.J. Keane & Co has helped local residents buy and sell homes. We know your neighbourhood and what is Happening with property values. If you think That experience counts, give us a call ...

# CJKeane & CO.

## 5251 2388

## IN YOUR GARDEN

It's been a fantastic Spring so far, with plenty of soaking rain to refresh the gardens, let's hope it continues for a while yet. The only problem with a bit more moisture combined with the warmer weather, is the increased likelihood of fungi popping up in your garden. The roses are the most obvious casualties, with those tell tale black spots or a bit of white powdery stuff on the leaves. These can be controlled with various rose fungicide sprays, Triforine, Baycor, Kocide, etc. Before you spray try to get the affected leaves off the bush and from around the plant, this hopefully will help stop reinfection of the plant. Some roses are more resistant to fungi than others, so you may not need to spray all of your roses, but it is probably better if you do just to keep them clean. If a rose is severely affected by black spot to the point where there aren't any leaves left, then give it a prune and a feed, it should bounce back very quickly. A regu-

lar spray is usually the best way to keep on top of these two fungi if you know that they are about, 2-3 weeks depending on the conditions.

Most of your flowering trees will be finishing flowering soon if they haven't already. After flowering is the time to prune them into shape for the coming growing season. There is no hard and fast rule to pruning flowering trees, but it is important to maintain a balanced shape with no crossing branches. Prune to buds that point outwards, same technique as fruit trees just that the leaves are there. Weeping trees can be pruned at this time as well, with branches pruned back to upward outward facing buds to promote the umbrella shape. You don't have to cut them back to a stump but a prune will encourage more branches and so more flowers and a thicker plant next year.

Neil Muhlhan  
Alinga Nursery

## POTS & PANS FOR EAST TIMOR

The Rotary Club of Drysdale is organizing a collection of pots and pans and other kitchen utensils to be sent to East Timor. This is a preliminary collection that will be added to a collection being organized in Geelong in December.

The following schools in the area have kindly agreed to act as collection centers: Bellarine Secondary College, St Thomas's Primary School, Clifton Springs Primary, Drysdale Primary and Portarlington Primary.

The collection period will run from Monday November 6<sup>th</sup> until Friday 17<sup>th</sup> November.

Please look in your cupboards and decide what you no longer need.

If you have any queries or are unable to drop off your pots and pans and would like them collected, please contact Lindsay Wright on 5253 1695.


**MAXIMUM RATE**

# 7.50%

**PER ANNUM**

## Your easy, low cost way to invest

**Dennis Blake**



**PH 5229 4903**  
First Floor, 257 Moorabool St, Geelong

**Ask about our special offer**


Please send me details of your services and a copy of the current prospectus

Name: \_\_\_\_\_

Address: \_\_\_\_\_

Postcode: \_\_\_\_\_ Ph: \_\_\_\_\_

Applications for investment must be on a form attached to a current prospectus.  
Australian Pensioner Advisory Services P/L ACN 007 427 974 Holder of dealers licence number 88176.  
Visit our Website: [www.apas.com.au](http://www.apas.com.au)



**Australian Pensioner Advisory Services** Pty Ltd

*"Helping Australians invest wisely"*



Lynette's  
User-Friendly  
Computers

**Personalised  
Tuition & Training**

**Ph: 5259-3963**

P.O. Box 112, Portarlington:3223  
Serving the Bellarine Peninsula

**SHIATSU  
THERAPIST**

**Dip Shiatsu & Oriental Therapies  
Member STAA**

**Jennie Urquhart**

**Phone: 5250 2984**

# POINT RICHARDS MINIATURE RAILWAY

The future running days for the miniature railway at Point Richards, operated by the Rotary Club of Drysdale and the G.S.M.E.E. are:

October: 2<sup>nd</sup> and 4<sup>th</sup> Sunday.  
November: 2<sup>nd</sup> and 4<sup>th</sup> Sunday.  
December: 2<sup>nd</sup> Sunday and daily from Boxing Day to the 2<sup>nd</sup> of January.  
January: Every Wednesday and Sunday.  
February, March and April: Every Sunday until Easter.

Any enquiries or bookings telephone: 5259 1340.

## PENINSULA PLAYERS INC.

Rehearsals are progressing very well for "Money and Friends", the final play in 2000 to be performed by Peninsula Players. Written by David Williamson, "Money and Friends" takes place at Crystal Inlet, a beach resort in Sydney, where a group of friends own holiday homes and meet throughout the year.

The thoughts and reactions between the group unfold, to reveal

parallels in our lives – especially, when one member of the group needs help.. "Money and Friends" is a strong play performed by an excellent cast.

Margaret – played by Bodil Wright and Peter – played by Russell Campbell are ably supported by Colin Urquhart, Susannah Devenish, Simon Taylor, Glenda Maddison, Brendan O'Halloran, Martina

Lefebvre – Jones and Marcus Savidis.

Directed by Dennis King, "Money and Friends" will be performed on November 15<sup>th</sup>, 16<sup>th</sup>, 17<sup>th</sup>, 18<sup>th</sup> at Drysdale Community Hall, 8.00pm SHARP. Bookings at Drysdale Pharmacy, Phone: 5251 2671 or Rhena King on 5251 2431.




**DRYSDALE**  
**KITCHENS**  
CABINETS & JOINERY  
PH: (03) 5253 2774  
EST. 1986

**ESSENDON**  
**CHORAL SOCIETY**  
RETURNS TO PRESENT  
ANOTHER PLEASANT SUNDAY AFTERNOON  
Of  
**CHORAL MUSIC**  
SUNDAY 12th NOVEMBER 2000  
ST ANDREWS UNITING CHURCH HALL  
At 2.30 p.m  
The donation of \$7 includes a cuppa

**HUTCHINSON**  
**BOOKKEEPING**  
**FIRST CONSULTATION FREE**

- > COMPUTERISED & MANUAL BOOKKEEPING
- > MYOB TRAINING
- > OFFICE ADMINISTRATION SOLUTIONS

100% TAX DEDUCTIBLE



CALL  
0418 322 741  
AH 5251 1699

**BELLARINE**  
**AUTO SERVICES**  
Quality Mechanical Repairs  
Tuning - Servicing  
LPG Conversion - EFI  
Tyres - Batteries - RWC  
Licensed Vehicle Testers  
Mortimer St. Drysdale  
Proprietor: J. Pamplin  
Ph. 5253 1644

**BONE MARROW**  
**RECYCLE SHOP**  
High St. Drysdale  
Donations of  
good clothing  
and brick-a-brac needed.  
All proceeds from our shop go to  
help those with Leukaemia

**MOWER REPAIRS**  
REPAIRS, SERVICING & PARTS FOR ALL  
MOWERS, CHAINSAWS, BRUSHCUTTERS ETC.  
MOWERS FOR SALE  
Free Pickup & Delivery  
**PORTARLINGTON**  
**SMALL ENGINES**  
34 WILLIS STREET  
PH: NEAL WHELAN  
**5259 2510**

Uniting Church in Australia  
CONCERN  
**VILLAGE OP**  
**SHOP**  
Come and browse through our range of good quality ladies and mens wear, plus our selection of young adult and childrens clothing and our range of small household goods.  
DONATIONS OF GOOD CLEAN CLOTHING AND SMALL HOUSEHOLD GOODS REQUIRED  
Phone: 5251 3640.  
Shop 19/4 Village Walk, Drysdale.  
Hours: Mon - Frid 10.00a.m. - 4.00p.m.  
Sat - 9a.m. - 12 Noon.

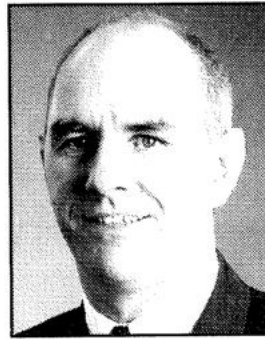
**Robert Tucker Piano Services**  
C/- Tuckerberry Hill.

Qualified Piano Tuner  
and Member of Piano Tuners and  
Technicians Guild of Australia.  
Tuning, Regulation,  
Restoration and Repairs.

Phone: 5253 3438



# The Professionals



*Phil  
Cumming*  
AH 5251 3047  
0408 599 232



*Gabrielle  
Beams*  
AH 5253 2848  
0412 430 976

## The Spirit of Christmas comes alive!

Following on from successfully conducting their Christmas Lights Spectacular competition in 1997, 1998 and 1999, The Professionals Real Estate Group has launched the competition again for 2000.

The Professionals Christmas lights Spectacular invites families to transform their homes with Christmas lights and decorations. The most spectacular Lit homes maintaining a Christmas theme could win cash and prizes from the professionals.

We are trying to bring the community together at Christmas time,

building friendships and enjoying the festive season.

Last year, almost 1,000 homes across the state participated in our competition, in a wonderful show of getting into the Christmas spirit.

Members of The Professionals Real Estate Group are running local competitions and entry is free to any house, flat, unit or shop.

Entry to the competition can be made at any participating office of The Professionals Real Estate Group.

Every participating property will display a Competition Entrant sign and be listed with other entrants so that everyone in the area can enjoy the fun.

The competition will be judged by Sat 16<sup>th</sup> December 2000 and winners will be printed in the next issue of Geelong Independent.

For more information, please contact our offices at Drysdale, Ocean Grove and Leopold.



## The Professionals

### CHRISTMAS LIGHTS SPECTACULAR



## Guyett Real Estate P/L

11 Clifton Springs Road, Drysdale

**5251 2847**