

# The SpringDale Messenger

Your Free  
Community  
Newspaper

Compiled and published by the SpringDale Community Cottage Inc A002916V

Circulation 3,700

ABN 21 404 220 267

Vol 11 No.4, May 2001

## THE CENTENARY OF FEDERATION 1901 - 2001.

As we join the celebrations for the Centenary of The Federation of the Australian States to form a Commonwealth we can look back and wonder how the residents of the Bellarine Peninsula celebrated those events in 1901.

Thanks to the extensively researched and expertly written "BALLA - WEIN" A history of the Shire of Bellarine by Ian Wynd published in 1988, we have a brief but clear account of local events in 1901.

"January 1, 1901, saw Bellarine as a part of a new nation - the Commonwealth of Australia. Bellarine Council had taken some small part in its creation, having sent the President, R. Trebilcock, to a meeting in Melbourne Town Hall in 1894 to vote in favour of federation. However, when Council was asked to fly flags on the Shire's public buildings to mark the opening of the Commonwealth Parliament, it merely received the letter. The Secre-

tary was more enthusiastic and was given a week's leave to attend the celebrations in Melbourne, and the Proper Officer at Drysdale was also granted leave to take part in a military demonstration."\*

We also know that T.T. Grigg, W.H. Capron, F.J. Pacey, W. Gray, J.B. Willis, G.E. Webster, D. O'Hallaron Snr., D. Rhind and J.A. Wilson were the elected Councillors at the time and T.T. Grigg followed by G.E. Webster were the Shire Presidents. Mr. S. Le Cocq was the joint Secretary and Engineer, obviously the gentleman who received a week's leave so that he could attend the celebrations in Melbourne.\*\*

Not a great deal of information but at least some record of the Peninsula at the time.

\*Direct quote Balla - wein Ch.11. P.138.

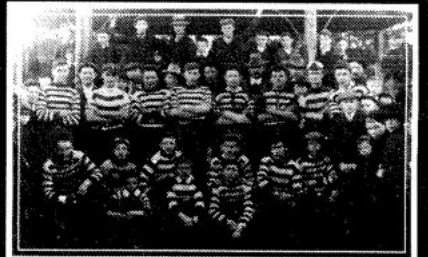
\*\* Balla - wein Apps 5. & 6. P.186 - 187.



Drysdale residents: c 1900



Drysdale cricket team: c 1900



Drysdale football club: c 1900



**DRYSDALE  
VILLAGE  
HARDWARE**  
**(03) 5251 3267**

YOUR HANDY  
HARDWARE  
STORE

THE ARCADE  
HIGH STREET  
DRYSDALE, 3222.



Bank of Melbourne 

**SHOP 9  
SUPERMARKET  
COMPLEX  
DRYSDALE**

# The SpringDale Messenger

The SpringDale Messenger is compiled by the SpringDale Community Cottage Inc. A0024916V, 14 Princess St. Drysdale. Postal: P.O. Box 80, Drysdale, 3222.

## Advertising and Enquiries: PH: 5253 1960. FAX: 5253 3050

Community Groups, Churches, Sporting Clubs, Service Clubs, etc., are invited to submit details of their future activities for regular inclusion in the Community Diary section, or as articles in the news section as appropriate.

Copy may be typed or printed with a good ribbon (preferred), or legibly handwritten and left at the SpringDale office at 14 Princess St., or posted to P.O. Box 80, Drysdale, 3222.

## Next Publication:

**Copy deadline:**

**18th June, 2001**

**Distribution:**

**6th July, 2001.**

Views expressed in this newsletter are not necessarily the views of the Publisher, the SpringDale Community Cottage Inc.

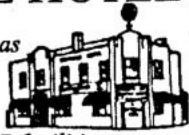
## ADVERTISING AND ARTICLES:

SpringDale Community Cottage, Phone (03) 5253 1960. To ensure publication in a specific issue, copy must be submitted prior to deadline. Layout and Design of this issue by Pagination Design Services, Geelong. Ph: (03) 5223 2494 email: [smd@pagination.com.au](mailto:smd@pagination.com.au)

*If visiting the Bellarine Peninsula, drop in for a meal at the*

## DRYSDALE HOTEL

- Friendly atmosphere
- Counter lunches and teas every day including Sunday
- Cosy log fires
- Geelong's first Pub-TAB facilities



LUNCH 12.00-2.00pm - TEA - 6.30-8.00pm  
Your host David Leahy and family

**High Street, Drysdale. Phone 5251 2301**  
(On Geelong-Portarlington Main Road)

## Contents

THE CENTENARY OF FEDERATION 1901 - 2001. .... 1	SOUND OF SORROW ..... 12
CLIFTON SPRINGS PRESCHOOL NEWS ..... 3	Prize Winner - OZ Kids in Print ..... 12
BEARS FOR CHILDREN'S WARD .... 3	You are warmly invited
Our community will be playing safe with VicHealth Sport Safety	To join Australia's most progressive Women's organization - ..... 13
Equipment funding. .... 4	DRYSDALE SENIOR CITIZENS CLUB ..... 14
24 HOUR POLICE STATION ..... 4	CLIFTON SPRINGS PLAYGROUP ... 14
TRAVEL TALK ..... 6	QUEENSCLIFF & DISTRICT WOODWORKERS ..... 15
BENEFITS OF GROWING OLDER !! . 6	DRYSDALE LADIES PROBUS CLUB INC. .... 15
CR. HEATHER WELLINGTON ..... 7	LADIES PROBUS CLUB OF BELLARINE INC. .... 16
What's happened and what's happening at the CLIFTON SPRINGS GOLF CLUB ..... 8	ROTARY ART SHOW A GREAT SUCCESS ..... 16
THE SHOW MUST GO ON ..... 8	ADVANCED LIFE SUPPORT TRAINING UNDERWAY ..... 17
'RED CROSS MARCH APPEAL' ..... 8	WHAT'S ON AT CLIFTON SPRINGS PRIMARY SCHOOL ..... 18
AMBULANCE SERVICE VICTORIA MEMBERSHIP ..... 10	HELP US TO HELP YOU - AMBULANCE SERVICE ..... 19
The North Bellarine Community Information Supplement - ADDITIONS . 11	SELLING FOR THE BEST PRICE .... 20
C.F.A. Information ..... 11	Huge Sales Volume Leads To Short Supply. .... 20
SPRINGDALE WRITERS - GOOD NEWS! ..... 12	



## Quality Butcher

PETER HOMMELHOFF

### HOMMY'S QUALITY MEATS

*For something new and different*

16 High Street, Drysdale 3222.  
Phone: 5251 2270




## D.L. & A.G. Robertson Plumbing

Licence No. 38872

PLUMBER \* ROOFER \* GASFITTER  
Maintenance & New Installations

David & Andrea Robertson  
Phone: 5253 2134 Mobile: 0411 532 133

## Feeling Troubled? Solutions can be found!



## Counselling

*Confidential and Caring - Skilled and Professional*

\* Mens Issues \* Womens Issues \* Child/Youth \* Relationships  
\* Sexual \* Anxiety \* Anger \* Depression \* Grief \* Loneliness

(Fees negotiated according to Income)

**PHONE : 5253 3060 Today!**

Situated: 219-223 Jetty Road, Cnr. Cowies Rd, Drysdale, Bellarine Peninsula, Vic. 3222

## BEARS FOR CHILDREN'S WARD

The Drysdale Ladies of Rotary – were recently challenged with the knitting of bears for traumatized children of road accidents etc. in the Geelong region. The ladies were happy to be part of this worthwhile cause. All sorts of beautiful coloured shaped bears were presented. They were then given to the Geelong Rural Ambulance and the Children's ward of the Geelong Hospital.

*Merrin Erhardt  
President.*



## CLIFTON SPRINGS PRESCHOOL NEWS

My name is Julia and I attend the Clifton Springs Preschool. We have had a wonderful time so far this year. Some of the highlights have been, the Chicken Hatching Program, The Flying Bookworm Theatre Co., the Family Picnic Days, our Easter activities and Easter Egg Hunt.

This week we were given a library bag that we were able to decorate, now we can take our own library books home each week. Our Preschool has its own pets Squealer and Scamper two guinea pigs. We get to hold them and feed them. I was even able to take the guinea pigs home for the holidays and look after them. This week we had our own supermarket with real food.

Eril let us play in the mud pit this week, it was great fun. Some of the boys even got stuck in the mud when they put in lots of water. Eril reads us some really good stories. My favorites are Muddy Footprints and Winnie The Witch. My kinder bag

is always full because I love making things for Mum and Dad.

This week I was 5 and I had a cake at preschool with 5 candles. The best part was sharing out the cake with all of my friends. On the weekend my friends are all coming to my place for a really big Wizard of Oz party.

Every day Eril and Julie have new surprises for us at Preschool so I can't wait to get there and play.

Julia Jahnecke  
5 years old.  
Clifton Springs.



### CAFÉ A BICA



Excellent Coffee!

Morning & Afternoon Teas  
Light Lunches & Snacks

Cakes, Slices & Homemade Muffins  
Homemade Quiches & Lasagne  
& Much More!

Drysdale Village Shopping Centre (Opposite Safeway)  
Open Mon-Fri 9-5 Sat 9-2  
Ph 5253 1200

### SHIATSU THERAPIST

Dip Shiatsu & Oriental Therapies  
Member STAA

**Jennie Urquhart**  
Phone: 5250 2984

### MOWER REPAIRS

REPAIRS, SERVICING & PARTS FOR ALL  
MOWERS, CHAINSAWS, BRUSHCUTTERS ETC.

MOWERS FOR SALE  
Free Pickup & Delivery

### PORT MOTORS

44 Geelong Road, Portarlington  
PH: NEAL WHELAN  
**5259 2510**



# Our community will be playing safe with VicHealth Sport Safety Equipment funding.

Member for Bellarine, Garry Spry MP announced that sport safety will be improved with a funding injection under VicHealth's **2001 Sports Safety Equipment Program**.

"This is a healthy boost for our community," said Mr. Spry. "This year's program was very competitive, with over 886 sporting clubs from around the State applying for VicHealth funding.

The successful clubs on the Peninsula are:

Drysdale Hawks Football Club  
\$1,500.00  
Women on Waves  
\$ 875.00

Ocean Grove Calisthenics College  
\$2,000.00  
Surfside Waves Soccer Club Inc.  
\$2,100.00  
Queenscliff Football/Netball Club  
\$ 850.00

"And I congratulate them on the success of their application," Mr. Spry said.

VicHealth remains committed to promoting safe sport within local communities throughout Victoria. Under the **2001 Sport Safety Equipment Program**, \$500,000 is going to local sporting organizations to reduce the number of sports injuries in Victoria.

"Participation in physical activity is an important and enjoyable part of life".

"There is no doubt the funding will provide much needed support for safe sport within our communities. Not only will the equipment provide a safer environment, but I hope it will encourage people to get out there and participate in their favourite sporting activity," Mr. Spry said.

"With these improvements in injury prevention, the health, economic and social benefits – and the enjoyment – offered by regular physical activity can be maximized," he said.

## 24 HOUR POLICE STATION

Ocean Grove people will be celebrating the news that the Government has committed to building a 24-hour police station in the town. There is no doubt that a 24-hour police station will be of enormous benefit to the people of the Bellarine Peninsula, provided that it is fully manned. A minimum number of 34 officers are required to man a 24-hour station and in the future there

should be the capacity for the police to occasionally be on the beat in the streets. This is what people on the Peninsula want to see – a police presence, which is identifiable. The force is held in an enormously high regard throughout Victoria and more officers on the beat and more officers patrolling the eastern end of the Peninsula will be keenly anticipated.

### Other Peninsula stations?

There are, however, concerns about the Labor Government's long-term plans for the existing satellite stations of Drysdale, Portarlington and Queenscliff.

A 24-hour police station requires a minimum of 34 officers. Even if all 21 officers in the four stations on the Peninsula were re-deployed to Ocean Grove, a further 13 permanent officers will still need to be recruited.

It should be recognized, therefore, that the Ocean Grove facility will not be able to operate on a 24-hour basis if Drysdale, Portarlington and Queenscliff stations remain open.

It is almost certain that, the Government will keep shop-fronts in Drysdale, Portarlington and Queenscliff until after the next election scheduled for September 2003. In the meantime, we run the risk of having a half-baked facility in Ocean Grove, on a site that was established without any community consultation.

Garry Spry M.P.  
Member for Bellarine.



## Drysdale Motors

**FOR ALL AUTOMOTIVE TUNING AND SERVICING**

**Specialising in LPG DYNO TUNING**

Have your LPG vehicle Tuned on a "rolling road". If your car runs on LPG And hasn't been dyno tuned Then it hasn't been tuned.

- Roadworthy Testing
- Fuel Injector Cleaning
- Air Conditioner Servicing
- LPG Conversions
- New Car Servicing

**44 Murradoc Rd, Drysdale, 3222.**  
**PHONE: (03) 5253 1033.**

*Linda Stephens'*  
**Hairdressing** 

60 Buccleugh St., Drysdale

**BY APPOINTMENT ONLY**

- I offer you a professional environment using quality Products at a competitive price.
- I have 19 years experience with current trends in colouring, Perming, cutting and styling for the whole family.

Phone Linda  
5253 3039  
for an appointment



**Lynette's User-Friendly Computers**

**Personalised Tuition & Training**

**Ph: 5259-3963**  
P.O. Box 112, Portarlington:3223  
**Serving the Bellarine Peninsula**



# Merv Nelis (Zenshin) Martial Arts Academy

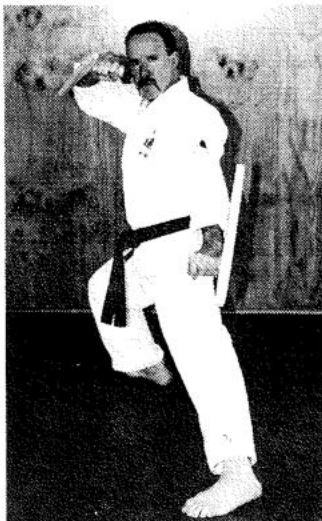
## Make This Year Your Most Confident Ever!



What would your life be like if you had more confidence, more energy, and more self-discipline? Would you like to know you could handle yourself in even the most stressful of situations? It's all possible, and it can happen much faster than you imagine.

Better still, you'll thoroughly enjoy the process of transforming yourself into a healthier, happier, more confident person. Our program is specially designed for today's busy person. And our classes are conveniently scheduled so they fit just about anyone's lifestyle.

Make 2001 your year to become the person you've always wanted to be. Try a class this week. Give us a call today!



Through the years, the martial arts industry has grown rapidly. It has grown out of the image of a gym to that of an educational school, with a curriculum which outlines goals and objectives. Many martial art schools still adhere to the training regimes and philosophy of bygone years unable and/or reluctant to move with the times. The age we live in today is fast moving and the way of practice many years past is not necessarily relevant in our Western society.

Merv Nelis Zenshin Martial Arts Academy is one such school that has seen the need for change incorporating a blending of traditional values with contemporary martial arts that offers not only an effective self-defence program but a means for personal development, character development and discipline.

With this formula for success you will be able to handle the constant pressures of everyday living more easily. Zenshin translates to mean total development – we aim to better develop and condition the mind, body and spirit.

Our progressive style of martial arts training will provide the student with a comprehensive course in offensive and defensive techniques. Street self-defence techniques are also a part of the curriculum. Our school emphasizes discipline and the value of persisting until goals are reached. We believe in following a high standard of values to bring out the good and increase the quality of life. Regular attendance of our programs will result in stress reduction and improved health. All students learn to set goals and be self-motivating in achieving them.

At Zenshin we offer programs for all ages ranging from 5 years to 70 years plus. We have many families training together which helps to create a strong family bond by instilling a life-long loyalty. The whole family can learn to live up to their full potential.

Our special "Little Dragons" program (5 yrs to 8 yrs) has enjoyed outstanding success over the last few years. Our unique children's programs use interesting and enjoyable methods to keep the student's attention and teach our young students skills that they can use. We provide non-violent resolutions to conflict. We believe in praise, encouragement and positive reinforcement. We encourage our younger students to give their best at school and to behave courteously at home. We are the only school in Geelong to introduce the highly successful S.T.A.R. program. This program is designed to teach our younger students to use the Stop, Think, Act and Review decision model to solve problems and resolve conflicts.

Enrolments are now being taken for our next course starting soon. Placings are filling quickly so be early in order to secure a position.

If you would like to experience any of the following benefits then Zenshin Martial Arts is for you: Practical Self Defence, Enhanced Conditioning, Flexibility & Coordination, Weight Reduction as well as Increased Endurance and Lowered Heart rate, Confidence and Self Discipline, Enhanced Concentration.

All new students (9 yrs and above) are eased into our program by way of our Orientation Program. This program consists of 2 semi/private classes plus a uniform for the low cost of \$9.95. We believe we can offer our students the best program available anywhere and we back this up with an exclusive no risk 30 day guarantee – within the first month we will refund the full tuition if you are not completely satisfied.

Merv Nelis Zenshin Martial Arts Academy is a full time professional Organisation operating out of Park Street, Belmont (Headquarters) and at Murradoc Road, Drysdale. Classes are offered 6 days a week during the day, evenings and weekends.

Vacancies are now available for all of our programs (Adults and Children), for bookings or further details phone 5244 3722 anytime.

# Merv Nelis (Zenshin) Martial Arts Academy

**Two Addresses**

**5 Park St, Belmont**

**55 Murradoc Road, Drysdale.**

**Phone**

**5244 3722**

# TRAVEL TALK

## Cruising In A Pacific Paradise – FIJI

NI SA BULA!

What a magic place Fiji is! It is great for a short Escape or an extended relaxing holiday. I was there for 2 weeks in March and had a most memorable holiday. The Fijians are the most genuine and hospitable people I have met.

I had the pleasure of Cruising with Captain Cook Cruises on their 5 day Yasawa Island Cruise. All delicious meals and shore excursions were included. The Cabins were extremely comfortable for a small cruise ship! The highlight of the Cruise was visiting a local school on one of the remote Islands where the children sang to us! They were absolutely gorgeous. We also vis-

ited a Local Village where we feasted on 'Lovo'. (Meat and vegetables cooked in an underground oven).

The Daily shore excursions are a highlight! You can either snorkel, walk the beautiful beaches or just relax with a book on the beach under a tropical Palm Tree! There is also the opportunity to buy some locally made sarongs, carvings and shells by the village women on the islands.

Cruising the Blue Lagoons and snorkeling amongst the colorful coral was just spectacular! We even visited the site where part of the movie "Blue Lagoon" was filmed starring Brooke Shields. Cruising is a great way to meet interesting people and you will be totally entertained throughout the Cruise. The staff and the service are second to none.

Captain Cook Cruises have some great specials available Cruising the Fiji Islands, the Murray River, Sydney Harbour and also the Great Barrier Reef. There is a two people travel for the price of 1 special on the Murray River & Great Barrier Reef Cruises. The sale is on until the 15<sup>th</sup> June and travel is valid on selected departures through to December. Please don't hesitate to phone our office on 5251 1125 if you have any queries.

*Nicole Peart*  
Harvey World Travel  
Drysdale.

# BENEFITS OF GROWING OLDER !!!!

- Kidnappers are not very interested in you.
- In a hostage situation, you are likely to be released first.
- It's harder and harder for sexual harassment charges to stick.
- No one expects you to run into a burning building.
- People call at 9.00 pm and ask, Did I wake you?
- People no longer view you as a hypochondriac.
- There's nothing left to learn the hard way.
- Things you buy now won't wear out.
- You can eat dinner at 4.00 pm.
- You can live without sex but not without glasses.
- You enjoy hearing about other people's operations.
- You get into a heated argument about pension plans.
- You have a party and the neighbours don't even realize it.
- You no longer think of speed limits as a challenge.
- You quit trying to hold your stomach in, no matter who walks into the room.
- Your secrets are safe with your friends because they can't remember.
- Your investment in health insurance is finally paying off.
- Your eyes won't get much worse.

Submitted by a Senior Member of the Drysdale Community, With a great sense of humour.



**HARVEY**  
world travel

*The Travel Professionals*

**YOUR LOCAL TRAVEL AGENT**

- local tours
- international and
- domestic flights
- coach tours
- package holidays
- travel insurance

**SHOP 2A**  
**6 HIGH STREET, DRYSDALE.**  
**TELEPHONE: 5251 1125**  
**MOBILE: 0417 129702**

**Been to BreastScreen  
And received an 'all clear' result?**

**GREAT!**


For you to get the greatest benefit from the program, It is important to return for a mammogram each two Years after 50.

As you know, the risk of breast cancer increases With age, but you may not know that half of the Abnormalities detected through the program which Require investigation are found at a second, third or Subsequent screening.

**Is it time for your next screening?**

**Belmont BreastScreen**  
18 Regent St Belmont

Phone 13 20 50 for an appointment  
If travel is a problem, ask your local Community Health Centre about their next bus trip



*The*  
**DRYSDALE PHYSIOTHERAPY  
& SPORTS INJURY CLINIC**

Sports, Spinal, Manipulative Therapy, Arthritis, Workcover, TAC, Vet Affairs, Hydrotherapy, Exercise Rehabilitation & Myotherapy / Massage


**Peter Terry   Emily Turner   Elise Riley**

**5251 - 2958**

**27-29 High St Drysdale**

*"Serving the community for over 20 years"*

**Open Mon - Fri 8am to 8pm, Sat 8am to 12 pm.**



# CR. HEATHER WELLINGTON

April was a busy month, with Councillors working hard as a team to establish priorities for the next three years.

I hold the Human Services portfolio, and will also be Council's representative on a number of committees including the Clifton Springs Skatepark Committee, the Bellarine Rail Trail Advisory Committee and the Bellarine Multi Arts Facility Management Committee. Otherwise known as the "Potato Shed", this state-of-the-art facility is available for community use.

It has been very satisfying to assist a number of residents and ratepayers with local service issues. I am also enjoying establishing links with community groups.

Representing Council at the Portarlington Anzac Day service was a great privilege, while my husband, Ian Kelly, participated in the Drysdale service.

Council has approved, with heritage and environmental safeguards, the installation of broadband telecommunication facilities throughout the municipality.

When available locally, they will enable cheaper local telephone services, faster internet services and cable television.

A once-only collection of hard waste has also been approved, and should be available to Coryule residents later this year.

Council has agreed to seek a commitment from state and federal politicians for the construction of the western ring road around Geelong. It is likely to be several years before a conclusion is reached about an eastern ring road. While Council supports a state Government feasibility study, there is a high level of awareness about environmental and planning services.

Copies of a draft **Open Space Networks Study**, which analyses the municipality's open space and makes recommendations on future provision and development opportunities, are available at Council service centers for consultation until Friday May 18. A number of Coryule residents and community groups have indicated that they will comment on this study.

Barwon Water is also consulting (until 8<sup>th</sup> June) on the **Green Industry Probe**, a study on water re-use that was conducted in conjunction with the Department of Natural Resources and Environment. Copies are available online at [www.barwonwater.vic.gov.au](http://www.barwonwater.vic.gov.au) or by contacting Barwon Water directly.

Please feel free to contact me at any time to discuss these or other issues on 0409 809941, or through the Council offices.

Cr. Heather Wellington.



**18-20 HIGH ST. DRYSDALE.**  
**OPEN 7 DAYS A WEEK**  
 November to April: 10am - 5pm  
 May to October: 11am - 4pm  
 All Public Holidays except Good Friday and Christmas day.  
 New Members always Welcome  
**Ph: 5251 1605**

## NEEDLE SYRINGE PROGRAM

Are you using drugs?  
 If so, then protect yourself from HIV and Hepatitis C.

Obtain clean fits from the Drysdale Community Health Service  
 21 Palmerston Street, Drysdale.

**A CONFIDENTIAL service.**  
**No questions asked.**

## BONE MARROW RECYCLE SHOP

High St. Drysdale

**Donations of good clothing and brick-a-brac needed.**

All proceeds from our shop go to help those with Leukaemia

# INSTYLE BLINDS

QUALITY BLINDS AND CURTAINS  
 AFFORDABLE PRICES

## OUTSIDE AWNINGS

(Free measure & Quotes      Shop-at-home service)

- Venetian Blinds
- Vertical Blinds
- Pleated Blinds
- Holland Blinds
- Awnings
- Drapes
- Repair & Maintenance Service

**48 Murradoc Road, Drysdale 3222.**

**Ph: 5251 1195**

*The only Funeral Directors Permanently situated on the Bellarine Peninsula.*



**DRYSDALE & PENINSULA FUNERAL SERVICES**  
 Committed to Caring

**PHONE: 5251 3477**  
 24 hours - 7 days



# What's happened and what's happening at the CLIFTON SPRINGS GOLF CLUB

Monday 30<sup>th</sup> April saw the Club hold it's 1<sup>st</sup> Morning Melodies sing-a-long with June Fraser entertaining the large audience with an outstanding show. Due to the success of the day we have planned another Morning Melodies for Wednesday 13<sup>th</sup> June featuring the talented duo Ramble Tamble performing all the classic hits. To get in early and avoid disappointment phone the Club for bookings.

The Club has been holding regular entertainment on Friday and Sat-

urday nights throughout April, and during May this entertainment will continue every Friday Night (refer advertisement for details), make up a table and enjoy a relaxing night.

Our last big show "Supergroup Flashbacks" was a sellout and bookings are selling fast for the next show, the return of "The Glenn Miller Swing Band" on Saturday 23<sup>rd</sup> June. To secure your seat ring the Club now.

With our new Caterer's Peter and Kate Crowley (from Ocean Grove

Bowling Club) settled into the Club, their \$5.50 lunches are proving very popular, as is their nightly A La Carte menu.

On the golfing side over 175ml of welcome rain was received during April which has improved the playing surface immensely, so there is no better time to join the Club than now with full golfing membership (pro-rata to 30/09/01) available at only \$187.00 (GST inclusive).

## THE SHOW MUST GO ON

The concern by both The State and The Federal governments at the demise of country shows is well documented. Herald Sun Monday 16<sup>th</sup> April 2001 quotes "country events fail to draw crowds rural shows dying".

The Bellarine Agricultural Society Inc. have accepted the challenge to reverse this trend. Trevor Cunningham has been elected to the committee as treasurer, Bill Burns and Barry Carew will assist with marketing.

The show committee has the view, that with the considerable experience that these three men have in the field of business, finance, politics and promotion, the fortunes of the Bellarine Agricultural Show are in competent hands.

I, as the secretary send this message to all in our community and beyond, "the faltering steps of the past are behind us and we are now marching to a different beat".

SHOWTIME in The Bellarine will be on Super Sunday 10<sup>th</sup> March, 2002, at bayshore Portarlington. Regular news bulletins prepared by our promotions group will appear progressively in each addition.

The master plan will reveal a day unique in concept, exciting in its presentation, pleasing and rewarding in its delivery.

*Lynette Wilson (Sec.)*


Phone & Fax: 5251 3379.

## 'RED CROSS MARCH APPEAL'

The Portarlington Red Cross Unit wishes to thank all those who so generously gave of their time to collect for the March Red Cross Appeal, plus co-ordinate collectors, and help with the counting and sorting of the money for banking. Your help was greatly appreciated. The overall amount collected was \$8,849.25.

Thank You,  
E. Harrold  
President.

**CHARLES CRAWFORD & SONS**  
**FUNERAL DIRECTORS**



CNR PORTARLINGTON & COPPARDS RDS  
24HRS GEEELONG 7 DAYS  
FOR CARING, PERSONALISED  
FUNERAL SERVICES FROM  
\$2,200 (inc. G.S.T.)  
PHONE  
TERRY & CAROL CRAWFORD  
**on: 5248 5500**  
INSPECTION OF OUR CHAPEL AND  
FACILITIES MOST WELCOME  
PREPAID & PRE-ARRANGED PLANS AVAILABLE

**Chui Yuan** 酒翠  
Chinese Restaurant 家園  
(B.Y.O.)

TAKE AWAY & HOME DELIVERY  
FUNCTIONS & GROUP BOOKINGS A SPECIALTY  
QUALITY & CLEANLINESS ARE PARAMOUNT  
REASONABLE PRICES  
\* \$6.00 LUNCH SENSATION MENU

**Ph. 5253 1788**  
Shop 2, 26-28 High St. Drysdale, 3222.

**FLEA BUSTERS**  
MOBILE DOG WASH

Clipping, Bathing & Grooming

"A complete service  
by the true Professionals".

**5281 1711**  
Professional Service For All Breeds At  
Your Own Home

# Clifton Springs Golf Club

## Play By The Bay



### New Caterers

**All New -- Great Food -- Great Prices**

Peter and Kate Crowley from Ocean Grove Bowling Club are now running the Bistro with the best view on the Peninsula

## TRY OUR FABULOUS \$5.50 LUNCHES

(Monday to Friday only)

**It's back-- SUNDAY LUNCH CARVERY**  
**3 Courses for only \$11.00**  
**A-La-Carte menu also available**

Dine on  
**Friday and Saturday nights**  
 Have a chance to win a  
**Lucky Diners Prize**

**May**  
**Live Entertainment**  
**(7.00pm-10.00pm)**  
 Friday 4th - Paul Carrigg  
 Friday 11th - Utopia  
 Friday 18th - Graeme Lear  
 Friday 25th - The James Gang



**Morning Melodies**  
**13th June**  
 Starring  
**RAMBLE TAMBLE**  
**\$10.00 show & Meal**  
**\$5.00 show only**

### Golfing Membership

Full playing Membership \$187.00 (until 30/09/01)  
 Country Membership \$ 93.50 (until 30/09/01)  
 Junior Membership \$ 55.00 (until 30/09/01)

### \*SHOW SPECTACULARS\*

Sat June 23rd

**\*Glenn Miller Swing Band\***

Return Appearance  
 Book Early

**\$30.00**

Sat 28th July

**THE BIG O SHOW**

The Roy Orbison Tribute Show

### SUNDAY TO THURSDAY EVENING

#### \$3.50 MEAL DEAL

Buy one main meal off our regular menu and receive another of equal or less value for only \$3.50 on presentation of this coupon (not valid Public Holidays and Long Weekends) \*valid until 31st May 2001\*

**Phone Bookings-52513391-**

# AMBULANCE SERVICE VICTORIA MEMBERSHIP

Let us know you've moved – Ambulance.

The Ambulance Service is warning people that they could lose their membership benefits if they don't receive and return their annual renewal notice.

"Renewal notices are sent out by mail," said Rural Ambulance Victoria Business Development Manager Mike McCrabb, "and if we don't have your correct address, you may not receive that important notice."

"Renewal notice mail-outs are only as good as the information on the member database, and it is important that Ambulance Service

members notify us of any change of address so that they maintain their membership coverage."

Mr. McCrabb said an address change could be made by ringing 1300 366 141.

He said Ambulance Service Membership provided emergency care and transport as well as non-emergency service and access to specialist services such as the air ambulance, new born emergency transport, and the mobile intensive care paramedic service.

"One of the benefits of being a member of the Ambulance Service is that any trip in an ambulance to

or from any medical treatment place in Australia is free."

Mr. McCrabb said these benefits only applied to subscriptions taken out with Ambulance Service Victoria.

"The cost of a membership is not high, \$35 a year for singles and \$70 for families; and it's a small price to pay for what could be a life saving trip."

"That membership and its benefits can only be maintained if we know where to send a renewal notice."

Rural Ambulance Victoria.

**Frank Burge Cars**

**KEITH PURCELL  
or  
DAVID GALLOP**

Phone: 5222 1606  
Fax: 52218608  
Mobile: 0418 554 011  
172 Fyans Street,  
South Geelong 3220

**Naturopath**

Keir Osborne ND. Bsc.  
DIP.APP.SC. (Naturopathy)  
BSc. (Biological Science)  
ANTA Member

Herbal Medicine  
Iris Diagnosis  
Nutritional Therapy  
Diet and Lifestyle  
Counselling  
Herbal Teas

SPECIALIST IN WOMEN'S  
AND FAMILY HEALTH

Drysdale Community Health Centre  
Wednesday and  
Thursday 12noon - 6pm  
Phone: 5251 2291 or Ocean Grove  
On 5255 1320.

**BELLARINE**  
VETERINARY PRACTICE

7 Palmerston Street, Drysdale.

**Hydro Bath and Grooming**

NOW AVAILABLE



For Enquiries  
Ph: 5253 1393 or 5248 2009

## ★★★★★ Attractive Returns

**6.65%**  
p.a.

Dennis Blake



### Key Features

- Established for 15 years
- Attractive returns pay monthly
- Direct banking of income and withdrawals
- Withdrawals with as little as 24 hours notice
- Telephone redemption facility
- No front end fees
- Low or nil exit fee
- All first mortgage security
- Average loan ratio security 60%
- Minimum investment is \$1,000

**PH 5229 4903**  
First Floor, 257 Moorabool St, Geelong

Please send me details of your services and a copy of the current prospectus

Name: \_\_\_\_\_

Address: \_\_\_\_\_

Postcode: \_\_\_\_\_ Ph: \_\_\_\_\_

Applications for investment must be on a form attached to a current prospectus. Australian Pensioner Advisory Services P/L ABN 16 007 427 974  
Holder of dealers licence number 88176.  
Visit our Website: [www.apas.com.au](http://www.apas.com.au)

**APAS**  **Australian Pensioner Advisory Services** P/L

"Helping Australians invest wisely"

**Bellarine Hearing Services**

**Audiologists & Hearing Aid practitioners**

- Professional hearing assessment
- OHS accredited provider For eligible pensioners
- Quality hearing aids

**PH 5229 6407**

\* NOW AT DRYSDALE EVERY TUESDAY

**CONCEPT CAMPERS**

Manufacturers and repairers of Annexes, Awnings, Tonneaus, Tarps, Horse Rugs, Boat Covers Custom Built Camper Trailers Caravan and Boat Storage Discount for senior citizens

Phone (03) 5253 2569  
61-63 Murradoc Rd. Drysdale.



# THE NORTH BELLARINE COMMUNITY INFORMATION SUPPLEMENT

The Committee of Management of SpringDale Community Cottage together with the Advertisers represented in The Messenger are pleased to provide to the Residents of The North Bellarine Peninsula an extensive INFORMATION GUIDE to Community Organizations and Services established in their LOCAL AREA.

We are grateful to those who have contributed information for the preparation of this supplement. Every care has been taken in compiling and checking the information.

If readers are aware of any changes or mistakes we would appreciate the completion of the section below and its return to SpringDale.

## COMMUNITY DIRECTORY UPDATE FORM

TO: **SPRINGDALE COMMUNITY COTTAGE**  
**14-16 PRINCESS STREET, P.O. BOX 80, DRYSDALE. 3222.**

NAME OF ORGANIZATION, CLUB, ETC. \_\_\_\_\_

POSTAL ADDRESS: \_\_\_\_\_

TELEPHONE NUMBER: \_\_\_\_\_

FAX NUMBER: \_\_\_\_\_

CONTACT PERSON: \_\_\_\_\_

ACTIVITY FOR CLASSIFICATION (e.g. Football); \_\_\_\_\_

### THE NORTH BELLARINE COMMUNITY INFORMATION SUPPLEMENT.

**This list has been compiled solely to provide information. While all due care has been taken in compiling this list SpringDale Community Cottage Inc. makes no recommendations and takes no responsibility for errors or omissions.**

### EMERGENCY SERVICES

#### **Ambulance**

Phone: (03) 5222 2555  
 Or 000

#### **Emergency Services**

Phone: 000

#### **State Emergency Services**

Grubb Road, Drysdale 3222  
 Phone: 018 525 648

#### **Fire Brigade**

Geelong & District  
 Phone: 000

#### **Geelong Hospital**

Casualty 24hrs (03) 5226 7564  
 Psychiatric 24hrs (03) 5226 7410

#### **Lifeline (24hrs)**

Phone: (03) 5222 2233  
 Or 131 114

#### **Poisons Information Centre**

Phone: 131 126

#### **Police**

Emergency Phone: 000  
 Drysdale Station  
 Phone: (03) 5253 1763

#### **Police cont...**

Portarlinton Station  
 Phone: (03) 5259 2606

#### **Electricity**

Loss of Power – Powercor  
 Phone: 132 412

#### **Gas**

Emergency Phone: 262 411

#### **Water**

Emergency Phone: 269 111

#### **Drysdale Shopfront**

Hancock Street, Drysdale 3222  
 Phone: (03) 5227 0527  
 Telephone for all Geelong Services  
 Phone: (03) 5227 0270  
 Fax: (03) 5227 0277

#### **CORYULE WARD.**

Cr. Heather Wellington  
 P.O. Box 104  
 Geelong 3220.  
 Ph. 0409 809941.

#### **Immunization Queries**

Phone: (03) 5226 7549

### **You may wish to direct dial individual departments. The more frequently called numbers are:**

Accounts Enquiries	(03) 5227 0610	Local Laws	(03) 5227 0500
Aged & Disability Service	(03) 5227 0710	Meals on Wheels	(03) 5227 0710
Building Permits	(03) 5227 0450	Parks & Recreational Reserves	(03) 5227 0754
Children's Services	(03) 5227 0741	Parking Infringements	(03) 5227 0500
Building Maintenance & Security	(03) 5227 0320	Planning Permits	(03) 5227 0450
Dog/Cat Enquiries	(03) 5227 0500	Planning Scheme	(03) 5223 2588
Economic Development	(03) 5227 0888	P/R & Marketing	(03) 5227 0800
Environmental Planning	(03) 5227 0856	Rates	(03) 5227 0660
Family Day Care	(03) 5227 0805	Road, Drainage & Traffic Planning	(03) 5227 0660
Hall Bookings	(03) 5227 0732	Subdivisions	(03) 5227 2588
Health Inspections	(03) 5227 0411	Tourism	(03) 5223 2588
Home Care	(03) 5227 0710	Urban Design	(03) 5227 0856
Home Maintenance	(03) 5227 0710	Volunteers	(03) 5227 0760
Library Services	(03) 5227 1900	Youth Services	(03) 5227 0699

## ACCOMMODATION AGED

**Ann Nichol House**  
80 Willis Street, Portarlington 3223  
Phone: (03) 5259 2763

**Bellarine Peninsula Elderly Peoples Home Inc.**  
Lions Village, Gellibrand Street  
Portarlington. 3223  
Enquiries - Secretary  
Phone: (03) 5259 2684

**Drysdale Aged Care Hostel Pty. Ltd.**  
16-22 Palmerston Street, Drysdale 3222  
Phone: (03) 5253 2582

**Homestead Nursing Home**  
1495 Bellarine Highway, Wallington  
3221  
Phone: (03) 5250 1188

**North Bellarine Hostel for the Aged Inc. and Friends of Ann Nichol House**  
P.O. Box 20, Portarlington 3223  
Contact Person:  
Hon. Secretary-Ann Nichol  
Phone: (03) 5259 2763  
Fax: (03) 5259 3269

## AMBULANCE

Bellarine, Grubb Road, Drysdale 3222  
Phone: (03) 5222 2555

## ADULT EDUCATION

**SpringDale Community Cottage Inc.**  
14-16 Princess Street, Drysdale 3222  
P.O. Box 80, Drysdale 3222  
Phone: (03) 5253 1960  
Fax: (03) 5253 1960

**University of the Third Age**  
P.O. Box 122, Geelong 3220  
Contact Persons:  
Drysdale-Miriam Durrant  
Phone (A/H): (03) 5251 3866  
Portarlington  
Phone (A/H): (03) 5259 3008

## BELLARINE AGRICULTURAL SOCIETY INC.

P.O. Box 315, Drysdale 3222  
Contact Person:  
Andrew Belfrage - President  
Phone: (03) 5251 3075

## BELLARINE BRANCH ALP.

P.O. Box 217, Drysdale. 3222.  
Contact Person: Claude Savino - President  
Phone: (03) 5253 2888  
Meetings 4th Thursday of Month Senior  
Citizens Hall 7.30p.m.

## CHILD HEALTH CENTRES

**Clifton Springs Maternal & Child Health Centre**  
Central Road, Clifton Springs 3222  
Phone: (03) 5251 2538

**Drysdale Maternal & Child Health Centre**  
21 Palmerston Street, Drysdale 3222  
Phone: (03) 5251 2291  
Or (03) 5251 2538

**Portarlington Maternal & Child Health Centre**  
39-41 Fenwick Street, Portarlington  
3223  
Phone: (03) 5259 2537

## CHURCHES

**ANGLICAN**  
St. James Anglican Church  
Collins Street, Drysdale 3222  
Contact Person: Rev. Carle Hannah  
Phone: (03) 5251 2571

**BAPTIST**  
Clifton Springs Baptist Church Welfare  
45 Central Road, Clifton Springs 3222  
Phone: (03) 5253 1833

**PENECOSTAL CHURCH  
BELLARINE CHRISTIAN CENTRE**  
1542-1550 Bellarine Highway,  
Wallington.  
Contact Person: Pastor John & Luise  
Vaccarello  
Phone: (03) 5250 1239

**CATHOLIC**  
St. Thomas  
41 Wyndham Street, Drysdale 3222  
Contact Person: Father Des Pantone  
Phone: (03) 5251 2502

**CHURCH BY THE BAY**  
P.O. Box 182,  
Portarlington. 3223.  
Contact: Pastor Greg Ilingworth.  
Phone: (03) 5259 3378.

**CLIFTON SPRINGS BAPTIST CHURCH**  
45-51 Central Road, Clifton Springs,  
3222.  
Contact Person: Rev. David Evans  
Service Time: Sundays 10a.m.  
Phone: (03) 5253 1833  
Or (03) 5251 3440

**REVIVAL CRUSADE**  
Drysdale Christian Fellowship.  
276-290 Jetty Road, Drysdale 3222  
Contact Person: Pastor Jake Hogendoorn  
Phone: (03) 5253 2241  
Fax: (03) 5253 2274

**UNITING**  
Bellarine Parish Uniting Church  
125 Barrands Lane, Drysdale 3222  
or P.O. Box 240, Drysdale. 3222.  
Contact Person: Rev. Margaret Man-  
ning  
Phone: (03) 5253 2199 Church Office  
Fax: (03) 5253 1336

**AGLOW AUSTRALIA-BELLARINE**  
Inter-denominational Christian Fellow-  
ship for Women  
Unit 2, 35 Gumbowie Avenue,  
Clifton Springs 3222  
Contact Person:  
Mrs Eunice Graham-Secretary  
Phone: (03) 5253 2411

**ECKANKAR**  
Eckankar  
Contact Person: Claire Duffy  
Phone: (03) 5253 1785

## CIVIL CELEBRANT

**Anne Barclay,**  
3 Turner Court,  
Portarlington. 3223.  
Phone: (03) 5259 3055

**Anne Cowden,**  
55 Settlement Road,  
Drysdale. 3222.  
Phone: (03) 5251 3319  
Fax: (03) 5251 3848

## CITY OF GREATER GEELONG

**Family Day Care**  
P.O. Box 104  
Geelong. 3220.  
Phone: (03) 5227 0805

**CORYULE WARD.**  
Cr. Heather Wellington  
P.O. Box 104, Geelong 3220.  
Ph: 0409 809941.

## COMMUNITY GROUPS

**Portarlington Development Association Inc.**  
60 Newcombe Street, Portarlington  
3223  
Contact Person: Merrilyn Anderson-  
Secretary  
Phone: (03) 5259 3747

**The Drysdale/Clifton Springs Commu-  
nity Association,**  
C/- SpringDale Community Cottage,  
14 Princess Street, Drysdale. 3222.  
Phone: (03)5253 1960.

**Community Information and Referral  
Association.**  
P.O. Box 1186, Geelong 3220  
Corio Phone: (03) 5275 6772  
Belmont Phone: (03) 5244 2601

## COUNSELLING

**Marriage & Personal,  
Bethbirri Counselling Practice,**  
219-223 Jetty Road,  
Cnr. Cowies Rds,  
Drysdale. Vic. 3222.  
Contact: Mary-Ruth Dowd(Director).  
Phone: (03) 5253 3060  
Fax: (03) 5253 3060

## COUNTRY WOMENS ASSOCIATIONS

**Drysdale Country Womens Association Inc**  
P.O. Box 360, Drysdale. 3222.  
Contact Person: Mrs. Betty Carlson -  
Secretary  
Phone: (03) 5251 3901  
Meetings 2nd Tuesday 1.30pm.  
Clifton Springs Community Centre.

**C.W.A. St. Leonards.**  
35 Fisher Street, Portarlington. 3223.  
Contact Person: C. McNamara  
Phone: (03) 5259 3022  
Third Monday 10am.

### **Portarlington Country Womens Association**

RSL Hall, Cnr. Harding & Fenwick Sts, Portarlington.

Contact: Esma - President

Phone: (03) 5259 3070

Contact: Eileen - Secretary

Phone: (03) 5259 3541

Meetings 10am last Wednesday of the month. New Members & Visitors welcome.

### **Portarlington. CWA,**

RSL Hall, Cnr. Harding & Fenwick Streets,

Portarlington 3223

Phone: Eileen-Secretary - (03) 5259 3541

Esma-President - (03) 5259 3070

New members and visitors welcome.

## **CRAFT**

### **Drysdale Community Craft Shop**

18-20 High Street, Drysdale 3222

Phone: (03) 5251 1605

Secretary: Gillian Horvath

Phone: (03) 5253 2565

### **Bellarine Patchwork Group**

Contact Marlene Myers

Phone: (03) 5257 1110

Meets on the 1st & 3rd Tuesday of each

month at 7pm, at Portarlington Health

Centre.

### **Bellarine Textile Group,**

173 Newcombe Street,

Portarlington. Vic. 3223.

Contact :Liz Clifton

Phone: (03) 5259 2898

### **Woodworking.**

Kevin Cass,

5 Boonderabbi Drive, Clifton Springs.

Phone: (03) 5253 2641

### **SpringDale Craft Groups**

14-16 Princess Street, Drysdale 3222

Phone: (03) 5253 1960

**Sew & Sews** Wednesdays 10-12,

**Which Craft** Wednesday 1-3p.m.

**Friday Group** Fridays 1-3

Childcare available at

This session.

## **DANCE**

### **Portarlington Senior Citizens Club**

Bootscooting & Old Time Dance

Fourth Saturday of the Month.

8pm-12 midnight

### **Linedancing**

Len & Dawn Olsen

14 Warner Street, Indented Head.

Phone: (03) 5257 1249

Port Bootscooters.

## **CHILDREN DAYCARE**

City Learning & Care Drysdale

13 Eversley Street, Drysdale 3222

Contact: Karen Gilmer-Centre Director

Phone: (03) 5227 0791

### **SpringDale Children's Occasional Care/Activity Sessions**

SpringDale Community Cottage,

14 Princess Street, Drysdale 3222

Phone: (03) 5253 1960

## **DO CARE GEELONG**

### **Do Care Geelong Co-Operative Limited**

33 Mt Pleasant Road, Belmont 3216

Contact: Jan or Cathy

Phone: (03) 5243 0313

Fax: (03) 5243 0313

Do Care increases the social networks of lonely Older people primarily through the establishment Of a one to one friendship with a volunteer. Activities are also offered through small social Groups. If you would like more information Either to become a volunteer or have a volunteer Visit you please call the above phone number.

## **DOCTORS**

### **Drysdale Village Medical Centre**

7 Palmerston Street, Drysdale 3222

Phone: (03) 5253 1002

### **Drysdale Clinic**

Collins Street, Drysdale 3222

Phone: (03) 5251 2865

Fax: (03) 5253 2227

### **Dr Bruce P Jones**

8 High Street, Drysdale 3222

Phone: (03) 5251 3255

### **Dr M Vishal**

9 Bennett Street, Drysdale 3222

Phone: (03) 5251 2200

## **EDUCATION**

### **KUMON STUDY CENTRE**

DRYSDALE.

Contact Person: Jeanette Lindgren

Ph. 5251 3662 or 04114 01459

## **ENVIRONMENT**

### **Swan Bay Catchment,**

Contact: Sue Longmore.

P.O. Box 52,

Queenscliff. 3225.

### **Bellarine Landcare Group,**

P.O. Box 431, Drysdale. 3222.

Contact: Mark Pinney - Secretary.

Phone: 040 705 2116.

## **GARDEN CLUBS**

### **Clifton Springs/Drysdale Garden Club**

P.O. Box 233, Drysdale. 3222.

Contact Person: Secretary.

Phone: (03) 5253 2013

### **Portarlington & District Garden Club Inc.**

Fenwick Street, Portarlington 3223

### **St Leonards Garden Club Inc.**

Unit 5, 1344 Murradoc Road,

St. Leonards. 3223.

Contact Person: Mrs. June Blair.

Phone: (03) 5257 1684

## **GUIDES**

### **Drysdale Guides**

1485 Portarlington Road

Drysdale. 3222

Contact Person: Anne Brackley

Phone: (03) 5251 2250

Fax: (03) 5253 1057

### **Portarlington Guides**

71 The Esplanade

Portarlington. 3223

Contact Person: Sylvia LeMarquard

Phone: (03) 52592827

## **HALLS FOR HIRE**

### **Clifton Springs Tennis Club Hall,**

P.O. Box 189,Drysdale. 3222.

Location: Jetty Road Reserve,

Clifton Springs.

Contact Person: Glenda Callow

Phone: (03) 5253 1741

### **Drysdale Primary School Community Activity Centre**

Sporting and Social Use

Enquiries: Mervyn (9am -4pm)

Phone: (03) 5251 2272

### **Drysdale Community Hall**

High Street, Drysdale 3222

SpringDale Community Cottage

Phone: (03) 5253 1960

### **St Thomas Hall**

Contact: David Stone-Secretary

St Thomas Hall committee

Phone: (03) 5251 3259

Fax: (03) 5251 2564

## **HEALTH AND WELFARE**

### **Bellarine Peninsula Community Health Service**

21 Palmerston Street, Drysdale 3222

Contact: Marion Westrup

Community Health Nurse Co-Ordinator

Phone: (03) 5251 2291

Fax: (03) 5253 1134

Hepatitis 'C' Suport Group

Youth Group

Carers Support group

Low Vision Group

Friendship Group

Young Adults Club

Withdrawal Support Group

Break-Even Problem gambling Service

### **Bellarine Peninsula Community Health Service Inc.**

Portarlington Community Health Centre,

39 Fenwick Street, Portarlington 3223

Services Co-Ordinator/Comm. Health Nurse

Phone: (03) 5259 2537

Fax: (03) 5259 3269

### **Better Hearing Australia Geelong Inc.**

400 Pakington Street, Newtown 3220.

Contact: Muriel Hoggart - President

Home No. (03) 5243 6533

Phone: (03) 5221 1042

Fax: (03) 5221 8645

Voluntary Self Help for Hearing Impaired Adults



**Nursing Mothers' Association  
Bellarine Group**  
10 East Street, Drysdale 3222  
Contact: Mrs Ro Day  
Phone: (03) 5251 3652

**Geelong Pathology**  
Shop 5, 26-28 High Street, Drysdale  
3222  
Contact: Yvonne Kuchenmeister  
Liason Officer  
Phone: (03) 5253 2727  
Fax(Myers St, Geelong): (03) 5223 1572

**Queenscliff & District Community  
Health Centre**  
Nelson Road, Pt Lonsdale 3223  
Phone: (03) 5258 0888

**Drysdale & District Community  
Health Centre**  
21 Palmerston Street, Drysdale 3222  
Phone: (03) 5251 2291

**Ocean Grove & District Community  
Health Centre**  
Cnr. The Avenue & Presidents Avenue,  
Ocean Grove 3226  
Phone: (03) 5256 1311

**Portarlington & District Community  
Health Centre**  
392 Fenwick Street, Portarlington 3223  
Phone: (03) 5259 2537

**Drysdale Alcoholics Anonymous,  
Drysdale Community Health Centre**  
21 Palmerston Street, Drysdale 3222  
Phone: (03) 5251 2291  
Fax: (03) 5253 1134

**Bethbirri Counselling Practice**  
223 Jetty Road, Cnr. Cowies Road,  
Drysdale 3222  
Contact: Mrs Mary Dowd-Director  
Phone: (03) 5253 3060  
Fax: (03) 5251 3191

**Bone Marrow Donor Support Group**  
Opportunity Shop, High Street, Drysdale 3222  
Phone: (03) 5251 2507

**Carers Group for Parents of Children  
With Special Needs,**  
C/- Ocean Grove Health Centre,  
Corner Presidents Avenue & The Avenue,  
Ocean Grove.  
Contact: Jayne Kotz  
Phone: (03) 5256 1311  
Fax: (03) 5256 1924.  
Support Group.

### **NEEDLE SYRINGE EXCHANGE VENUES:**

**Drysdale Community Health Centre,**  
21-25 Palmerston Street,  
Drysdale. 3222.  
Phone: (03) 5251 2291  
Hours: Monday - Friday 8.30am to 5.00pm

**Portarlington & District Community  
Health Centre,**  
39 Fenwick Street,  
Portarlington. 3223.  
Phone: (03) 5259 2537.  
Hours: Monday - Friday 8.45am to 5.15pm

**Lifeline Opportunity Shop**  
Unit 1-19 Murradoc Road, Drysdale  
3222  
Phone: (03) 5253 2168  
10:00am-4:00pm Monday -Friday

**Overeaters Anonymous-Drysdale,  
Drysdale & District Community Health  
Centre**  
21 Palmerston Street, Drysdale 3222  
Phone: (03) 5253 1498  
Fax: (03) 5252 1134

**Parkinsons Disease Support Group**  
55 Geelong Road, Portarlington 3223  
Phone: (03) 5255 1314

**Drysdale Health Centre Auxiliary**  
21 Palmerston Street, Drysdale 3222  
Contact: Norma Davis-President  
Phone: (03) 5251 2351  
Lesley Taylor-Secretary  
Phone: (03) 5251 2674

**Illawarra Centre**  
265 Pakington Street, Newtown 3220  
Contact: Tony Cole  
Services Director  
Phone: (03) 5221 4100  
Fax: (03) 5223 1317  
Community/Disability Services

**Vision Australia Foundation,**  
P.O. Box 850, Geelong. 3220.  
265 Pakington Street, Newtown. 3220.  
Contact: Tony Cole, Service Director.  
Phone: (03) 5221 4100  
Fax: (03) 5223 1317.  
Disability, Health, Welfare.

## **HISTORY**

**Bellarine Historical Society,**  
P.O. Box 53, Drysdale. 3222.  
Contact Person: Susie Zada  
Phone: (03) 5255 5233

**The Portarlington Mill,**  
Turner Court, Box 74,  
Portarlington. 3223.  
Contact: R. West (Chairman).  
Phone: (03) 5259 2804.

## **INTELLECTUALLY DISABLED**

**Club Family Two**  
P.O. Box 89, Drysdale 3222

## **JUSTICES OF THE PEACE**

**BELLARINE**  
Mrs Jean Cull  
25 Church Road, Bellarine 3222  
Phone: (03) 5259 2486

**CLIFTON SPRINGS**  
Patricia Lawton  
166 Bayshore Avenue, Clifton Springs 3222  
Phone: (03) 5253 2141

**DRYSDALE**  
Edward Garth  
8/138 Barrands Lane, Drysdale, 3222  
Phone: (03) 5251 3307

**Mrs. Pat Peel,**  
117 Clifton Springs Road, Drysdale.  
3222.  
Phone: (03) 5251 2403

**PORTARLINGTON**  
Andrew Mason  
117 Tower Road, Portarlington 3223  
Phone: (03) 5259 3202

**Bruce M Tanner**  
3 Hayman Street, Portarlington 3223  
Phone: (03) 5259 3497

**Guy Buttigies**  
48 Fenwick Street, Portarlington 3223  
Phone: (03) 5259 3193

**Patricia Bell**  
4 Queenscliff Road, Portarlington 3223  
Phone: (03) 5259 2684

**WALLINGTON**  
Winifred Brown  
Queenscliff Road, Wallington 3221  
Phone: (03) 5250 1908

## **LIBRARY**

**Drysdale Library**  
18-20 Hancock Street, Drysdale 3222  
Phone: (03) 5251 3855  
Fax: (03) 5227 0525

**Mobile Library Enquiries**  
Phone: (03) 5241 6151

## **MARKETS**

**Drysdale**  
Drysdale reserve, (Football reserve)  
P.O. Box 298, Drysdale 3222  
Phone: (03) 5251 2624  
Craft Market held every 3rd Sunday  
of each month (October - May)

**Drysdale Primary School Community  
Market**  
P.O. Box 298, Drysdale 3222  
Contact: Sue-Market Co-Ordinator  
Phone: (03) 5251 3311

**PORTARLINGTON**  
Newcombe Street, Portarlington 3223  
Phone: (03) 5257 3155  
Craft Market last Sunday of the month.  
All year round indoor/outdoor market.

**ST LEONARDS**  
Foreshore Reserve, St Leonards 3223  
Phone: (03) 5257 1801  
Craft markets held in Jan. one in Con-  
junction with Pier to Pub swim. Also  
Easter Saturday.

**WALLINGTON**  
Strawberry Fair  
610 Wallington Road, Wallington 3221  
Phone: (03) 5250 1841  
Craft market held in November of each year

## MASONIC LODGE.

**Bellarine Lodge of Mark Masters Masons,**  
52 Clearwater Drive,  
Clifton Springs. Vic. 3222.  
Contact: J.H. Tubb - Secretary.  
Phone: 5253 2127

## MUSIC

**Bellarine Community Concert Band/  
Bellarine Jazz Band**  
25 Caldwell Crescent, Wallington 3221  
Phone: (03) 5245 1415

## NEIGHBOURHOOD HOUSES

**SpringDale Community Cottage**  
14-16 Princess Street, Drysdale 3222  
Phone: (03) 5253 1960

## NEIGHBOURHOOD WATCH

**AREA K63**  
Co-Ordinator: Yvonne Houtsma  
Phone: (03) 5251 3373  
Secretary: Mitch Mitchell  
Phone: (03) 5253 1248  
Treasurer: Doug McKinnis  
Phone: (03) 5253 2283  
Newsletter: Joy Wallis  
Phone: (03) 5251 3696

**Police: Emergency 000**  
**Drysdale Police Station and Mobile**  
5251 1763

**AREA K64**  
Co-Ordinator: Jenny Sandilands  
Phone: (03) 5251 2180  
Assistant Co-Ordinator: Robert Stevenson  
Phone: (03) 5253 2245  
Secretary: Laurie Sandilands  
Phone: (03) 5251 2180  
Treasurer: Val Lewis  
Phone: (03) 5251 2623  
Publicity Officer: Bob Hutchinson  
Phone: (03) 5253 2445

## COMMUNITY NEWS

**The SpringDale Messenger**  
P.O. Box 80, Drysdale 3222  
Phone: (03) 5253 1960

## PARLIAMENTARY REPRESENTATIVES

**COMMONWEALTH**  
**Mr Gavan O'Connor M.P.**  
Member for Corio  
(Drysdale, Clifton Springs, Curlewis)  
1st Floor/235 Rylie Street, Geelong 3220  
Phone: (03) 5221 3033  
Fax: (03) 5222 4505

**Mr Stewart McArthur M.P.**  
Member for Corangamite  
Drysdale East, Portarlington, Bellarine, St  
Leonards, Indented Heads)  
2/75 High Street, Belmont 3216  
Phone: (03) 5243 8766  
Fax: (03) 5241 1927

## STATE

**Mr Garry Spry M.L.A.**  
Member for Bellarine  
Shop 1, Newcomb Central  
71 Bellarine Hwy., Newcomb 3219  
Phone: (03) 5248 3462  
Fax: (03) 5248 5294

**Elaine Carbines.**  
Geelong Province  
1 Yarra Street,  
Geelong 3220  
Phone: (03) 5222 1503  
Fax: (03) 5221 8677

**Mr Ian Cover M.L.C.**  
Member for Geelong Province  
La Cabine, 1 Yarra Street, Geelong 3220  
Phone: (03) 5224 2088  
Fax: (03) 5224 2386

**Electoral Roll Enquiries**  
Phone: 13 23 26

## PERSONAL AND RELATIONSHIP COUNSELLING

**Bethbiri Counselling Practice**  
223 Jetty Road, Cnr Cowies Road,  
Drysdale 3222  
Contact: Mary Dowd-Director  
Phone: (03) 5253 3060  
Fax: (03) 5251 3191

## PLAYGROUPS

**Clifton Springs Playgroup Inc.**  
P.O. Box 302, Drysdale 3222  
Contact Persons:  
Melinda Lomas - President  
Phone: (03) 5253 3113  
Simonne Fuller - Secretary  
Phone: (03) 5253 1370

**Clifton Springs Baptist Church Playgroup,**  
45 Central Road,  
Clifton Springs. 3222.  
Contact: R. Watkins.  
Phone: (03) 5253 1833

**P.A.L.S.**  
(Church by the Bay).  
P.O. Box 182,  
Portarlington. 3223.  
Contact: Kiri Raines.  
Phone: (03) 5259 3960.

**Portarlington Playgroup**  
Parks Hall, P.O. Box 141, Portarlington  
3223  
Phone: (03) 5259 3814

**St Leonards Playgroup**  
484 The Esplanade, St Leonards 3223  
Phone: (03) 5257 3011

**Kinderplay**  
SpringDale Community Cottage  
14-16 Princess Street, Drysdale 3222  
Phone: (03) 5253 1960

**Drysdale Christian Fellowship Playgroup**  
276 Jetty Road, Drysdale. 3222.  
Contact Person: Julie Stephens  
Phone: (03) 5251 3597  
Phone: (Church) (03) 5253 2241

## PENSIONERS ASSOCIATIONS

**St. Leonards Branch Vic. Country**  
Combined Pensioners Association,  
Main Road, St. Leonards. 3223.  
Contact Person: Jean Wright,  
9 Paton Street, St. Leonards.  
Phone: (03) 5257 1535

## POLICE STATIONS

**Drysdale Police Station**  
Eversley Street, Drysdale 3222  
Phone: (03) 5253 1763  
Contact: Sargeant Ralph Cornell

**Portarlington Police Station**  
119 Newcombe Street, Portarlington 3223  
Phone (03) 5259 2606

## POST OFFICES-AUSTRALIA POST

**Drysdale**  
Shop 8, Hancock Street, Drysdale 3222  
Phone: (03) 5253 2288

**Indented Head**  
313 The Esplanade, Indented Head  
3223  
Phone: (03) 5257 1705

**Portarlington**  
Newcomb Street, Portarlington 3223  
Phone: (03) 5259 2319

**St Leonards**  
Main Road, St Leonards 3223  
Phone: (03) 5257 1604

## PRE-SCHOOLS

**Beacon Point Pre-School Inc.**  
Centaurus Avenue, Clifton Springs 3222  
Phone: (03) 5253 1550  
Pre-School 3 year & 4 year old programmes

**Clifton Springs Pre School**  
Central Road, Clifton Springs 3222  
Phone: (03) 5251 3158

**Drysdale Pre School**  
13 Eversley Street, Drysdale 3222  
Phone: (03) 5251 2684

**Portarlington Pre School**  
Newcombe Street, Portarlington 3223  
Contact: Marita Thurman - Teacher  
Phone: (03) 5259 2793

**SpringDale Community Cottage**  
Three-Year Old Kindergarten,  
14-16 Princess Street,  
Drysdale. 3222.  
Phone: (03) 5253 1960

## SENIORS

**Church by the Bay,**  
Seniors Morning Tea.  
P.O. Box 182, Portarlington. 3223.  
Contact: Sue Ventra.  
Phone: (03) 5251 2228

**NATIONAL SENIORS ASSOCIATION.**  
P.O. Box 1035, Geelong 3220.  
Contact Person: Joan West  
Ph. (03) 5222 2835  
Seniors - Over 50 years.

## SWIMMING POOLS

**Clifton Springs Swimming Pool**  
Spring Street, Clifton Springs  
Phone: (03) 5253 2622

**Portarlington Swimming Pool**  
Portarlington Holiday Resort  
Smythe Street, Portarlington 3223  
Phone: (03) 5259 2910

**Splashdown**  
Grinter Reserve  
Coppards Road, Whittington 3219  
Phone: (03) 5248 4555

## PROBUS CLUBS

**Probus Ladies Club of Bellarine Inc.**  
Clifton Springs Community Centre  
P.O. Box 257, Drysdale 3222  
Phone: (03) 5251 3467

**Drysdale Ladies Probus Club Inc.**  
P.O. Box 235, Drysdale 3222  
Contact Person: Elaine Hatty  
Ph: 5251 3030.

**The Probus Club of Portarlington Inc.**  
P.O. Box 220, Portarlington 3223  
Contact: Mr Ken Read - President  
Phone: (03) 5259 2811  
Sylvia Le Marquand - Secretary  
Social Club for Active Retirees

**Probus Club of the Peninsula**  
"The Springs", Clifton Springs 3222  
Contact: Joe Redding - Secretary  
Phone: (03) 5259 2888  
Men's Fellowship

**Probus Club of St Leonards**  
Memorial Hall, St Leonards 3223  
Contact: Ron Richards - President  
Phone: (03) 5257 1724  
Bina Bennett - Vice President  
Phone: (03) 5257 1635

## PROGRESS ASSOCIATIONS

**St. Leonards Progress Assn.**  
St. Leonards Progress Assn. Memorial Hall,  
Murradoc Road,  
St. Leonards.  
60/40 Dancing.  
Phone: 5257 1013 or 5257 1949  
Wednesday 7.30p.m.  
Line Dancing Tuesday 10a.m. - 12 noon.  
Phone: 5257 1013 or 5257 1535.

### **INFORMATION AND REFERRAL ASSOCIATION**

(Inc. No. A0030989F)

**Free confidential and non-judgmental information and referral**

Staffed by trained C.I.W.C. Course accredited volunteers. Our aim is to help people with referrals to agencies most appropriate for their needs. We have been assisting people in Geelong for 25 years. If you are a good listener, interested in the community and have some spare time, then you may enjoy working as a volunteer at a C.I.R.A. office.



For more information call  
**CORIO**  
**5275 6772**  
**BELMONT**  
**5244 2601**

**Portarlington Development Association Inc.**  
RSL Hall  
Fenwick Street, Portarlington 3223.  
Phone: (03) 5259 3747

**St Leonards Progress Association**  
Memorial Hall, 1342 Murradoc Road,  
St. Leonards.  
Contact Persons: Ken Conwal - President  
Phone: (03) 5257 1013  
Beryl Bell - Secretary  
Phone: (03) 5257 3155

## RED CROSS

**Portarlington RED CROSS**  
St Andrews Hall, Portarlington 3223  
Contact: Bina Bennett - Secretary  
Phone: (03) 5257 1635

## RESCUE

**Coast Watch Radio & Marine Rescue Squad Inc.**  
P.O. Box 229, Portarlington 3223  
Phone: (03) 5259 3157  
Or 018 599 912  
Or 018 599 913  
Or 018 599 914

**State Emergency Services**  
Bellarine Unit  
P.O. Box 248, Drysdale 3222  
Local Headquarters  
Grubb Road, Drysdale 3222  
Controller: Chris Reynolds  
Phone: (03) 5253 2865  
Emergency Contact  
Phone: 018 525 648  
Or 000

## SCHOOLS

**Christian College Bellarine**  
40 Collins Street, Drysdale 3222  
Phone: (03) 5253 2998  
Fax: (03) 5251 3033

**Clifton Springs Primary School**  
Jetty Road, Clifton Springs 3222  
Phone: (03) 5251 3581

**Drysdale Primary School**  
Springs Road, Drysdale 3222  
Phone: (03) 5251 2272

**Portarlington Primary School**  
Newcombe Street, Portarlington 3223  
Phone: (03) 5259 2572

**St Leonards Primary School**  
1341 Murradoc Road, St Leonards 3223  
Phone: (03) 5257 1460

**St Thomas Primary School**  
Peninsula Drive, Drysdale 3222  
Contact: Mr Chris Malady - Principal  
Phone: (03) 5251 1050

**Wallington Primary School**  
610 Wallington Road, Wallington 3221  
Phone: (03) 5250 1841

## SECONDARY SCHOOLS

**Bellarine Secondary College**  
Drysdale Campus  
Peninsula Drive, Drysdale 3222  
Phone: (03) 5251 2866  
Fax: (03) 5251 2646

**Bellarine Secondary College**  
Ocean Grove Campus  
70 Shell Road, Ocean Grove 3226  
Contact: Mr Rob Hurley - Principal  
Mr B. White - Assistant Principal  
Phone: (03) 5255 1322  
Fax: (03) 5256 1883

**Catholic Regional College**  
Drysdale Campus  
Peninsula Drive, Drysdale 3222  
Contact: Michael Exton - Campus Director  
Phone: (03) 5251 1050

## SAFETY HOUSE

**Drysdale/Clifton Springs**  
Safety House Committee,  
C/- P.O. Box 122, Drysdale. 3222.  
(Drysdale Primary School).  
Contact: Jenny Johnson - Secretary.  
Phone: (03) 5251 2272

## SCOUTS

**1st Drysdale Scout Group**  
High Street, Drysdale 3222  
Contact: Wayne Simpson - President  
Phone: (03) 5253 2024

**1st Portarlington Scout Group**  
P.O. Box 130,  
Scout Hall - Cnr. Newcombe &  
Harding Sts,  
Portarlington 3223  
Contact Person: Dave Douglas - Group Leader.  
Phone: (03) 5259 2606  
Fax: (03) 5259 2161.

## SENIOR CITIZENS CLUBS

**Drysdale Senior Citizens Centre**  
Cnr. Wyndham Street & Clifton Springs  
Road  
Drysdale 3222  
Contact: Iris Astill - Assistant Secretary  
Phone: (03) 5251 2983

**Portarlington Senior Citizens**  
Newcombe Street, Portarlington 3223  
Phone: (03) 5252 2829

## SERVICE CLUBS

**APEX**  
**Apex Club of Ocean Grove**  
P.O. Box 87, Ocean Grove 3226  
Contact: Jason Corless - President  
Phone: 0418 143 480  
Fax: (03) 5250 1523  
The Bellarine Peninsula's only Apex Club!

**LIONS CLUBS**  
**PORTARLINGTON/DRYSDALE**  
**LIONS CLUB.**  
P.O. Box 402, Drysdale 3222.  
Contact: Paul Jones  
Ph: (03) 5251 3934



## **ROTARY**

**Drysdale Rotary Club**  
P.O. Box 123, Drysdale 3222  
Contact Person: Tom Erhardt  
Phone: (03) 5250 2370

## **SINGING GROUPS**

**SpringDale Singers,**  
18 Caravel Avenue, Clifton Springs.  
Contact: Gerald Edgar - Musical Director.  
Phone: (03) 5253 2347  
Community (Mixed) Choir.

**Bellarine Singers**  
Contact: SpringDale Community Cottage,  
14-16 Princess Street,  
Drysdale. 3222.  
Phone: (03) 5253 1960  
Meet Wednesday evening.

## **SPORT**

**Barwon Region Sports Assembly.**  
Corio Leisuretime Centre,  
Anakie Road, Norlane. 3214.  
P.O. Box 5186, Nth Geelong.  
Contact Person: Caroline Jordan  
Phone: (03) 5275 0617  
Fax: (03) 5275 0618

## **BASKETBALL**

**Bellarine Basketball Association**  
P.O. Box 55, Drysdale 3222  
Contact: Steve Anstis  
Phone: (03) 5251 3494  
Celia Thompson  
Phone: (03) 5253 1921

## **BOAT CLUBS**

**Indented Head Boat Club Inc.**  
41 Bostock Avenue,  
Manifold Heights. Vic. 3218.  
Contact Person: Peter Dalton  
(Hon. Secretary).  
Phone: (03) 5229 7882

## **BOWLING (CARPET)**

**Indented Head Carpet Bowls Club Inc.**  
Indented Head Boat Club Hall  
Contact: R. Elsworthy  
Phone: (03) 5243 3018  
W. Meek  
Phone: (03) 5257 1873

## **BRIDGE CLUBS**

**Geelong Bridge Club,**  
148-152 Portarlington Road,  
Newcombe. 3220.  
Contact: Gary Ridgway  
Phone: (03) 5278 7589  
Contact: Denise Clarke  
Phone: (03) 5253 2070

## **CRICKET CLUBS**

**Drysdale Cricket Club**  
P.O. Box 29, Drysdale 3222  
Phone: (03) 5251 3599

**Portarlington Cricket Club**  
P.O. Box 80, Portarlington 3223  
Phone: (03) 5259 2884

**St Leonards Cricket Club**  
Cole Street, St Leonards 3223  
Phone: (03) 5257 3208

## **CROQUET**

**Drysdale Croquet Club**  
Clifton Springs Road, Drysdale 3222  
Contact: Mrs R. Harrison - President  
Phone: (03) 5251 3134  
Mrs S. Cowan - Publicity Secretary  
Phone: (03) 5251 2994

**Drysdale Croquet Club**  
St Leonards Branch  
6, 59 Levens Road, St Leonards 3223  
Contact: Ms. Helen Forsyth - Promotions Officer  
Phone: (03) 5257 1457

## **EQUESTRIAN**

**Australian Equestrian Academy**  
1625 Bellarine Highway, Wallington  
3221  
Phone: (03) 5250 1788  
Fax: (03) 5250 3656

**Bellarine & Central Highlands Welsh Pony Regional Promotional Group,**  
C/- Lot 2, Newcombe Street,  
Drysdale. Vic. 3222.  
Contact: Karen Smithyman.  
Phone: (03) 5251 3186 A.H.  
(03) 5258 4043 B.H.

**Drysdale Leopold Pony Club**  
P.O. Box 84, Drysdale 3222  
Contact: Mrs Sue Thomas  
Phone: (03) 5251 2687

## **Portarlington & District Pony Club Inc.**

Lot 2, Newcombe Street,  
Drysdale. Vic. 3222.  
Contact: Karen Smithyman.  
Phone: (03) 5251 3186 A.H.  
(03) 5258 4043 B.H.

## **FISHING**

**Drysdale Fishing Club**  
Contact: Neville Finley  
Phone: (03) 5253 1032

## **FOOTBALL**

**Bellarine Football League**  
Kevin Lynch  
Phone: (03) 5256 1072

**Drysdale Football Club**  
Drysdale Reserve  
P.O. Box 12, Drysdale 3222  
Contact: Mr A. Gore - Secretary  
147 Country Club Drive, Clifton Springs 3222  
Phone: (03) 5251 2653

## **Portarlington/St Leonards Football Club**

Contact: Judy Mazey - Secretary  
Phone: (03) 5251 2023

## **GOLF**

**Clifton Springs Golf Club**  
P.O. Box 197, Drysdale 3222  
Phone: (03) 5251 3391

**Curlewis Golf Club**  
Portarlington Road, Curlewis 3222  
Contact: Club Manager  
Phone: (03) 5251 2534

**Portarlington Golf Club**  
130 Hood Road, Portarlington 3223  
Contact: Mr W. Reid - Secretary  
Phone: (03) 5259 2492  
Ladies  
Mrs M. Dower - Secretary  
Phone: (03) 5255 2307

## **St Leonards Golf Club**

73 Cliff Street, St Leonards 3223  
Contact: L. Blair - President  
Phone: (03) 5257 1943  
Mr E. Farrell - Secretary  
Phone: (03) 5257 1071

## **GYMNASTICS**

**Bellarine Calisthenic College**  
P.O. Box 304, Ocean Grove 3226  
Classes held in Drysdale/Clifton Springs  
Contact: Mrs Joanne Eaton - Principal Teacher  
Phone: (03) 5255 4837  
Mobile: 014 941566

**Portarlington Gymnastic Club Inc.**  
Parks Hall, Newcombe Street,  
Portarlington. 3223.  
Contact Persons:  
Danielle (03) 5259 1399  
Vicki (03) 5253 1004

## **HOCKEY**

**BELLARINE HOCKEY CLUB**  
Contact Person: John MacAuliffe  
Ph: (03) 5255 4679.  
Catering for Men, Women, Boys & Girls.  
Saturday Mornings U/12, U/14, U/16  
Teams  
Saturday or Sunday Afternoons Men & Women's Teams  
Beginners Welcome.

## **KARATE**

**World Zenshin Karate Organisation**  
53-55 Murradoc Road, Drysdale 3222  
Contact: Mervyn Nelis  
Phone: (03) 5244 3722

## **LAWN BOWLING CLUBS**

**Clifton Springs Bowling Club Inc.**  
P.O. Box 175, Drysdale. 3222  
Contact: Alan Rose - Director  
Phone: (03) 5253 1425

**Drysdale Bowling and Croquet Club Inc.**  
Collins Street, Drysdale 3222  
Contact: Mr J. McCooke - Secretary  
Phone: (03) 5253 2275  
Mr G. Nelson - Treasurer  
Phone: (03) 5253 1006

## **Portarlington Bowls Club Inc.**

Western Park  
P.O. Box 63  
Portarlington 3223  
Contact: I. Smith - President  
Phone: (03) 5259 2504  
V. La Franchi - Secretary  
Phone: (03) 5259 2397

**St Leonards Bowling Club**  
Murradoc Road, St Leonards 3223  
Phone: (03) 5257 1485  
Contact: A. Downie - President  
Phone: (03) 5259 3457  
G. Glass - Secretary  
Phone: (03) 5257 2220

## **NETBALL**

**Drysdale Netball Club**  
Contact: Janice Murphy - President  
Phone: (03) 5251 2714  
Joyleen Mallon - Treasurer  
Phone: (03) 5251 3716

**Peninsula Netball Assoc. Inc. A.1901**  
P.O. Box 13, Drysdale. 3222.  
Contact: Glenda Van Beek - Secretary.  
Phone: (03) 5251 3632  
Or (03) 5251 3742  
Fax: (03) 5251 3632

**Drysdale Football Netball Club**  
P.O. Box 222, Drysdale 3222  
Contact: Janine O'Connor - Secretary  
Phone: (03) 5251 3828

**St. Leonards Netball,**  
McLeod Street Courts,  
Phone: (03) 5257 1353

### SKATE BOARD RAMP

**St. Leonards Skate Board Ramp,**  
McLeod Street (Netball Courts),  
St. Leonards.  
1/4 pipe 3 tricks.

**Clifton Springs/Drysdale Skate Board Park,**  
Jetty Road, Clifton Springs. 3222.  
Next to Tennis Courts, Clifton Springs.

### SQUASH

**Drysdale Squash Club**  
C/- Sarah's Fitness Centre  
33 Murradoc Road, Drysdale 3222  
Contact: Phil or Reina Sarah  
Phone: (03) 5253 1795

### TENNIS

**Clifton Springs Tennis Club Inc.**  
P.O. Box 189, Drysdale. 3222.  
Location: Jetty Road Reserve,  
Clifton Springs.  
Contact Person: Geoff Causon - President  
Phone: (03) 5253 1741

**Drysdale Tennis Club**  
P.O. Box 141, Drysdale 3222  
Phone: (03) 5251 3465

**Portarlington Tennis Club**  
Portarlington Recreation Reserve  
Sproat Street, Portarlington 3223  
Phone (Clubhouse): (03) 5259 3710

**St Leonards Tennis Club**  
Bluff Road also Cole Street Courts,  
Social and Competition,  
Phone: (03) 5257 1474

### WALKING GROUPS

**Drysdale & Geelong Regional Walking Group**  
C/- Neil McMahon  
41 Palmerston Street, Drysdale 3222  
Contact: Elizabeth & Neil McMahon  
Phone: (03) 5251 2598

**Geelong Regional Walking Group Inc.**  
Phone: (03) 5257 3155  
Or (03) 5257 1969

**Geelong Regional Walkers,**  
Each month.  
Contact: (03) 5257 3155  
OR (03) 5257 1969

**Drysdale Walking Group**  
Contact: Beryl Walker  
Phone: (03) 52531196

**Geelong Bushwalking Club**  
P.O. Box 675, Geelong 3220  
Contact: Tony Gerum  
Phone: (03) 5222 3296

**SpringDale Community Cottage, Walking Group,**  
Phone: (03) 5253 1960  
Monday - Mothers with Prams.  
Wednesday - Open Group - 9..30.  
Over 55's Special. 1.00pm

**St. Leonards Walkers,**  
Week Mornings.  
8.30a.m.  
Phone: (03) 5257 3155

### YACHTING

**Portarlington Sailing Club**  
Pt. Richards Foreshore, Portarlington 3223  
Phone: (03) 5259 2903

**St Leonards Yacht Club & Motor Squadron**  
Lower Bluff, St Leonards 3223  
Contact: Captain Murray Hall  
Phone: (03) 5253 2206 (BH)  
(03) 5253 2775 (AH)

**Indented Head Yacht Club Inc.**  
P.O. Box 49, Drysdale 3222  
Contact: Manfred Herzer  
Phone: (03) 5243 4835  
Steve Gregory (03) 5255 1960

### THEATRE COMPANY

**Bellarine Jonglars Theatre Company**  
P.O. Box 251, Drysdale 3222  
Contact: Jacqueline Hall - President  
Phone: (03) 5251 2893

**Bellarine Jongleurs Junior Theatre Company Inc.**  
P.O. Box 251, Drysdale. 3222.  
Contact: Rachel Williamson - Advertising and Marketing Co-Ordinator.  
Phone: (03) 5251 1130.  
Theatre group in need of new members.

**"Sho-Biz"**  
16 Coronae Drive, Clifton Springs.  
Contact: Mavis Quarrell - Producer/  
Director  
Phone: (03) 5253 1143

**Peninsula Players Drysdale**  
Hon. Secretary: Margaret Wild  
Phone: (03) 5251 2359

**Bellarine Jesters,**  
P.O. Box 251, Drysdale. 3222.  
Contact: Barbara Reeves - Co-Ordinator.  
Phone: (03) 5257 3009

### TOY LIBRARIES

**Portarlington Toy Library**  
Portarlington Kindergarten Community Room  
Newcombe Street, Portarlington 3223  
Phone: (03) 5259 2706  
Or: (03) 5259 2183

**SpringDale Bellarina Toy Library**  
SpringDale Community Cottage  
Princess Street, Drysdale 3222  
Phone: (03) 5253 1960

### VETERANS

**Drysdale Sub Branch of the R&SL of Australia (Victorian Branch) Inc.**  
11-13 Princess Street, Drysdale 3222  
Phone: (03) 5251 2213

**Returned & Services League of Australia (Victorian Branch) Inc.**  
P.O. Box 109, Portarlington 3223  
Phone: (03) 5259 1055

**Geelong Legacy Laurel Club - Bellarine Group**  
P.O. Box 399, Drysdale 3222  
Contact: Rhoda Blakey - Secretary  
60 Beacon Point Road, Clifton Springs 3222  
Phone: (03) 5251 2681

*Community Information Supplement*

**Drysdale RSL Womens Auxiliary**  
13 Princess Street, Drysdale 3222  
Contact: Pam Davis - Secretary  
Phone: (03) 5251 2328

**Geelong Legacy Laurel Club - Bellarine Group**  
2 San Fernando Avenue,  
Portarlington. 3223.  
Contact persons: Eileen Sharp - President  
Phone: (03) 5259 3541.  
Rhoda - Secretary  
Phone: (03) 5251 2681  
Meets 2<sup>nd</sup> Wednesday at the RSL Hall,  
Portarlington at 10.30am.

**Portarlington RSL**  
Phone: (03) 5259 1055.

**Portarlington/St. Leonards Womens RSL Auxiliary.**  
Meets at RSL Hall Portarlington the 1<sup>st</sup> Monday of the month at 10am.  
Contact Persons:  
President: Eileen  
Phone: (03) 5259 3541  
Secretary: Pat  
Phone: (03) 5259 3823  
New Members Welcome.

### VETERANS NAVAL

**The Royal Naval Association**  
47 Hood Street, Portarlington 3223  
Phone: (03) 5259 3048

### VICROADS

All payment facilities available at Drysdale Office of the City of Greater Geelong.  
Hancock Street, Drysdale.

### VOLUNTEERING

Geelong Volunteer Resource Centre Inc.  
87 McLarty Place, Geelong. 3220.  
Contact Person: Michelle Jokic  
Phone: 5221 1377  
Fax: 5221 1499.

### WRITERS GROUP

**SpringDale Writers**  
SpringDale Community Cottage  
14 Princess Street, Drysdale 3222  
Contact: Dulcie Stone  
Phone: (03) 5253 1960  
Fax: (03) 5253 3050

### YOUTH LEADERSHIP ACTIVITIES

Drysdale Guides  
C/- 1485 Portarlington Road, Drysdale 3222  
Contact: Anne Brackley  
Phone: (03) 5251 2250

### WASTE DISPOSAL

**City of Greater Geelong**  
Drysdale Shopfront  
Hancock Street, Drysdale 3222  
Phone: (03) 5227 0527

Will provide you with appropriate days/dates, which garbage and recycling will be collected, in your area.

# The North Bellarine Community Information Supplent - ADDITIONS

## C.F.A. Information

### Fire Brigades

In the event of an emergency dial "000"

Burn Off Notifications –  
Phone 9887 7766 (24 hrs)  
(Always refer to local council  
bylaws prior to burning off)

**Municipal Fire Prevention Officer  
(COGG) David Millard – Phone  
5227 0437 (BH)**

(Bylaws information for burning off  
& permit allocation during Fire Danger  
Period)

CFA Fire Brigades on the Bellarine  
Peninsula are operated by **volunteer  
firefighters**, for further information  
on how to become a CFA Volunteer  
contact:

### **Barwon Heads Fire Brigade**

Captain Dale Berryman  
BH 0418 522 664  
AH 5254 2117

### **Drysdale Fire Brigade**

Captain Des Conner  
AH 5251 2783

### **Leopold Fire Brigade**

Captain John Hayes  
BH 5243 3538  
AH 5250 1349

### **Mannerim Fire Brigade**

Captain Greg Stringer  
BH 0409 028 928  
AH 5258 4454

### **Ocean Grove Fire Brigade**

Captain Bob Smith  
BH 5255 1746  
AH 0419 313 007

### **Portarlington Fire Brigade**

Captain Wayne McLennan  
BH 5259 2492  
AH 5259 2664

### **Queenscliff Fire Brigade**

Captain Jeff Hedley  
BH 5258 1104  
AH 5258 1104  
St. Leonards-Indented

### **Head Fire Brigade**

Captain Glenn Thompson  
BH 5257 1792

### **Wallington Fire Brigade**

Captain Tim Monahan  
BH 0418 521 902  
AH 5250 1164

### **Fire Brigades**

P.O. Box 274,  
Ocean Grove. 3226.  
Contact Person: Andrea Brown  
Brigade Support  
Phone: 5255 1746  
Mobile: 0417 382 066  
Fax: 5255 2390

# INVESTMENT PROPERTY

### *Dear Landlord,*

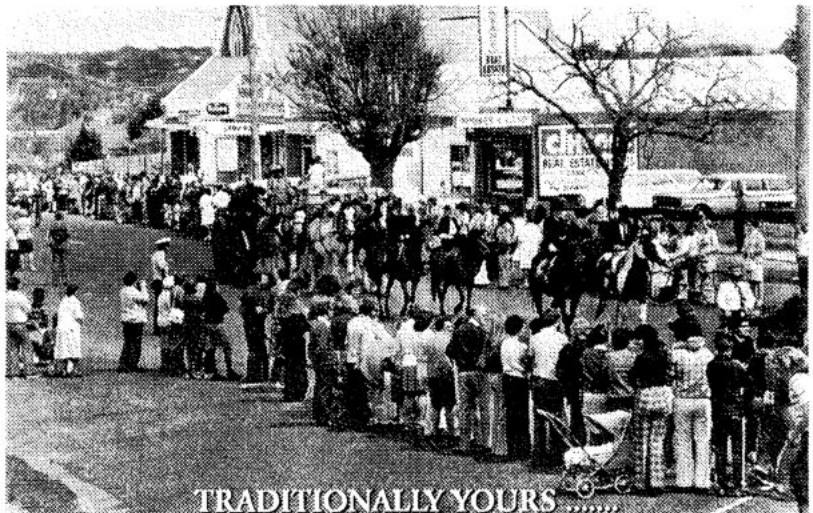
*Do you want to achieve the best possible  
return on your investment property?  
Naturally, you do! Your local*

### **C.J. Keane & Co**

*office can assist you in achieving this  
aim by offering you the services of a  
Property Manager who is dedicated  
to protecting both the physical buildings  
that comprise your investment as well as  
the income stream that it generates.  
A Property Manager who will look after  
your Property as if it were their own!*

- We conduct a regular inspection and report back to you.
- All prospective tenants must pass reference investigations.
- Our offices are computer linked.
- Rental arrears are followed up daily.
- We regularly undertake rental reviews.
- Rental Managers regularly attend ongoing training courses to keep them up to date with management techniques and legislation.
- Rents are paid via periodical debit.
- Quick disbursement of payments to landlords.

**Contact us today for a free and  
confidential appraisal on  
your property.**



**TRADITIONALLY YOURS**

... For more than 60 years C.J. Keane & Co has helped local residents buy and sell homes. We know your neighbourhood and what is Happening with property values. If you think That experience counts, give us a call ...

**CJKeane**  
& CO.  
**5251 2388**



# SPRINGDALE WRITERS - GOOD NEWS!

In their Annual Year Book – Harmony – SpringDale Writers regularly publish stories and poems by children from three local schools.

In the March publication of the Australian Children's Literary Board Quarterly Internet Magazine – Oz Kids In Print – seven of these children have been awarded prizes.

The Writers wish to congratulate the children who have achieved such notable success in this Australia wide publication.

The patron of 'Oz Kids' is Don Burke of Burke's Backyard. Sponsors are Bic Pens Australia, Citizen Watches, Hungry Jacks, Ansett and many others. Many radio person-

alities have been approached to read published works on their shows.

SpringDale Writers, who take an active role in promoting children's writing, are grateful for the continuing support of the SpringDale Committee of Management and staff in this work.

Dulcie Stone.

## SOUND OF SORROW

By Ashlee Littlehales

Year 7  
Drysdale Campus  
Catholic Regional College.  
Geelong, Vic.

*The sound of sorrow from tomorrow.  
Things are happening before they begin.*

*Like trapped worms in an apple.*

*You want to scream but nothing comes out*

*Your brain snaps like lightening and tears roll like thunder.*

*You say you're sorry but do you mean it?*

*Frustration answers questions.*

*Yelling shouting*

*STOP*

*Not a peep*

*But the sound of sorrow from tomorrow.*

## PRIZE WINNER - OZ KIDS IN PRINT

**THE ARAB.** By Catherine Smith.  
Year 8. Drysdale Campus Catholic Regional College.

He stood on the hill tall and proud. His nostrils were flared and his mane and tail were blowing in the wind.

Then he gave a call and the rest of the herd came up the other side of the hill. All different kinds; there were mares, foals and other young colts which were mostly purebred Arabians of all different colours and markings. But the leader the beautiful silver grey stallion stood out the most.

The he saw me standing next to the tree on my horse, a small chestnut mare. My horse suddenly flinched and the entire herd ran back

down the hill again. But the stallion stood his ground.

Just then I had a quick idea. Maybe I could go and follow the herd quietly around and the round up the beautiful stallion. "Yes!" I thought. "I will." So off we went, me on my little chestnut mare and the herd on their graceful long legs. The stallion pricked his ears and neighed to the rest of the herd. They were off! Through the bushland, up hills down hills, over fallen logs and through deep rivers. My little mare seemed to just scurry along compared to the stallion's herd who all looked like they were floating. As the day grew long I decided to let the herd rest. I wouldn't want anything to happen to the young foals.

As my mare and I headed off home in the dark I decided to try again tomorrow. The next day I arose up early to watch the lively herd come galloping up the hill with the morning sunrise behind them. Of course I was on my Mare. As I opened the round yard gate I saw the stallion alone. I made my mare walk into the yard and as I dismounted the stallion made his way up to the fence. I put my hand out and he lifted up his head and sniffed. His muzzle was as soft as velvet.

It was then when I decided to let him and his herd be free forever. - I watched as he carefully trotted back down the hill as if to tell his herd the good news.

**BUILDER**  
HIA MEMBER **Paul Jones** Registered B.P.B.  
Ph. 52 513934  
NEW HOMES ~ EXTENSIONS ~ AIR CONDITIONING  
Mobile 0419 354259

**BELLARINE FENCING Co**  
For all your fencing  
& gate needs,  
- Picket - Paling -  
Heritage Wire.  
Phone: Andrew & Gayle Baylis  
on 5251 3090 or 0417 544 887

**MORTIMER PETROLEUM**  
**PETROL STATION & CONVENIENCE STORE**  
97 High Street Drysdale Phone 5251 2603  
Petrol, Autogas Bait & Fishing Supplies  
**CAR WASH**  
Wash \$3.00 Wash & Polish \$4.00 With Petrol  
Open 6.00am-10.00pm

You are warmly invited To join Australia's most progressive Women's organization –

# VIEW

Formation Meeting of  
**DRYSDALE VIEW CLUB**

Date: 24<sup>th</sup> May, 2001 Time: 10.30am

At: Uniting Church Hall

Contact: Dorothy 5259 2761 or Wendy 9741 9301

VIEW, stands for Voice, Interest and Education of Women, is a national organization of contemporary women with traditional values, providing you with the opportunity to:

Meet new women, Build strong friendships, Become better informed,  
Contribute to the quality of life around you and have fun at the same time!  
\$5 to join and \$5 per annum.

valued part of **THE SMITH FAMILY**



**LAWNMOWING  
DIVISION**

CARL OLSSON - Franchisee

B.H.: 13 26 13 A.H.: (03) 5253 2032  
MOB.: 041 612 7 862

- Complete Garden Maintenance • Gutter Cleaning
- Rubbish Removed • All Garden Needs.

\*FREE QUOTES

\* FULLY INSURED

\* ALL WORK GUARANTEED

## Salvation Army Family Stores

Mortimer St. Drysdale  
Ph. 5251 2475

Plenty of Bargains  
The Place to Shop

Come and see us We are here to Help You

## MAGGIE GOVE N.D.

Bowen &  
Natural  
Therapist

Member of A.N.T.A.

Drysdale: Clinic 03-5251 1188  
Ah 03-5253 2230

A natural memorial in the heart of the Bellarine Peninsula

## Trees for Life

Planting a tree with  
Hepner Funeral Services  
is a special way to honour  
a family member or friend.



**Tattersall Funeral Care**

Pre-paid and pre-planned funerals

130 Bellarine Highway, Newcomb.

Tel (03) 5251 3626 all hours A Tattersall Family Business.

www.hepner.com.au

1026201

## Acacia Pest Control

For all your environment and  
Household pest problems.

### Bee and Wasp Removal.

Have your home treated

For the control of:

- \* Spiders \* Ants \* Rats \* Mice
- \* Earwigs \* Cockroaches
- \* Carpet Beetles \* Silverfish
- \* Clothes Moths \* Fleas

Protect your family and greatest  
Investment from pests.

Up to 6 months warranty.

TERMITE CONTROL SPECIALISTS  
Licenced to treat and inspect for all timber pests.

**Your local pest control bloke.**

Ph: (03) 5253 1714

Mobile: 0404 897 783



# DRYSDALE SENIOR CITIZENS CLUB

As I mentioned in the last edition the Club's 32<sup>nd</sup> birthday was to be celebrated on Monday 26<sup>th</sup> March, well, this we did in style. Various entertainment by some members, plus sing-a-longs, a Bush Band, with the musicians wearing a medley of outfits, hilarious to say the least. A lovely pianist called Eugenie played beautifully, such talent all round. Unfortunately Eugenie now has full time employment so we are looking for someone to help us out, if interested, a couple of hours here and there would suffice. The feedback of the day's events from the members was very rewarding, a great day. Thanks go to our two C.O.G.G. representatives, Keelie and Alison for

their support. They are two caring and lovely people.

April 16<sup>th</sup> (Easter Monday) was another enjoyable day for club members who enjoyed a sausage sizzle, (beautifully cooked by Alma, Joyce and Harry) sweets then followed, courtesy of Irene James. An Easter Bonnet parade brought forth a wonderful and varied creation of styles. The winners were (Men's) John Brownhill, (Ladies) Gladys Mason. All the other entrants were given a small bag of easter eggs. A slide show was then given by Iris (Liz) Tolton of places visited by her and the slides taken by her of places around the globe. This was greatly appreciated by all. Another show-

ing could be on the cards at a later date. Thanks (Liz).

I would like to thank the members, personally, for their loyal support to myself and the rest of the committee. Our aim is to do the best we can for you and to have a happy and friendly club, thank you all.

It is with sadness I report the passing of another dear and loved member Eric Pope, a long-term member and our condolences go to his family. A get-well message to our other sick members.

Until next edition,  
God Bless,  
Yours sincerely,  
Iris M. Astill.

## CLIFTON SPRINGS PLAYGROUP

Clifton Springs playgroup is now open for it's second term of this year.

Playgroup is open on:

Tuesdays, Thursdays and Fridays

9.30AM - 11.00AM

At the Clifton Springs Community Rooms.

Playgroup is for Children from birth to kinder.

For further information contact: Karen 5253 2615.

**SOLICITOR  
&  
CONVEYANCING**

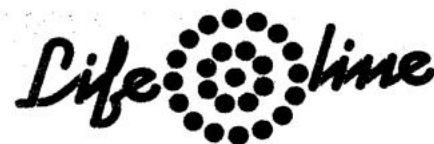
**Basil Ristevski LL.B**

**5251 3453**

**Robert Tucker Piano Services**  
C/- Tuckerberry Hill.

Qualified Piano Tuner  
and Member of Piano Tuners and  
Technicians Guild of Australia.  
Tuning, Regulation,  
Restoration and Repairs.

**Phone: 5253 3438**



Lifeline Shops have a wide range of all the following items



"Village Walk"  
Shops 9 & 10, 21 Clifton Springs Rd.  
Drysdale, Ph: 5253 2168

**LIFELINE ALSO SELL INDUSTRIAL RAG  
RING 5222 6418 FOR A PRICE**

**CARROLL'S WOODCRAFT SUPPLIES**

66 Murradoc Road, Drysdale 3222  
Ph: 03 5251 3874 Fax: 03 5251 3864  
E-mail: carrolls@pipeline.com.au

**CRAFT SUPPLIES.**  
MACHINERY & HAND TOOLS .  
WOODTURNING & CARVING &  
PYROGRAPHY (WOODBURNING) TUITION.  
PRODUCTION AND ONE OFF TURNING.  
SAW SHARPENING SERVICE.  
POWER TOOL REPAIRS.

**Drysdale** *Your One Stop Plumbing Shop*

**Plumbtec**  
Bathroom Kitchen & Plumbing Supplies

PH: DRYSDALE 52531268 GEELONG 5222126  
TANKS FOR DRINKING WATER & GARDENS



# QUEENSCLIFF & DISTRICT WOODWORKERS

The "Woodies" are a Bellarine Peninsula organization that meets in the Drysdale Railway Station on the first and third Monday of each month at 2.00pm.

With a membership of around 67 retired men and women, there are a wide range of experiences from which we can draw. In their "previous lives", the members came from all walks of life. We have (ex) engineers, farmers, school teachers, salesmen, ministers, boat builders, accountants. You name the occupation, and we will

probably have a practitioner amongst our members!

The members are only too happy to share their experience, as woodworkers or in other fields, all remember the time when THEY first tried to cut or turn a piece of wood.

At our meetings, new and old members, experts and learners, all share their experience and knowledge, and proudly display their efforts in a "show and tell" session, followed by a speaker, usually drawn from the membership.

Special interest groups help each other to build model ships, restore furniture, learn to finish wood, make carvings and so on, and in January each year, the club mounts a week-long exhibition and display of their hobby.

To be a member, it is not necessary to be an expert, only to love wood and what can be made from it. If you are interested, come along and see who we are and what we do. You will be very welcome.

Contact the Publicity Officer :  
John O'Rorke 5253 1117

# DRYSDALE LADIES PROBUS CLUB INC.

**REG. NO. A0021357E.**

Our monthly April meeting was chaired by our newly elected President, Pat Williams, who has just arrived back from an intensive most enjoyable trip overseas. We look forward to a year ahead with good leadership, and above all friendship. Congratulations to the newly elected Committee members.

Our Five Minute Speaker was Magie Keewis, another interesting life and story to tell.

Our Guest Speaker Suza Zada from Bellarine Historical Society, enthralled us with her enthusiasm for her subject.

Stargazers group saw "The Mexican" at The Village Theatre.

Our first visit and entertainment trip will be conducted by Patsy Burns, to the New Museum – more about that next month.

Lovely lunch (with new Management) at The Springs.

Hope you are all keeping well and happy, Hoo Roo till next time,  
*Jeanette Derham.*



## DRYSDALE CHRISTIAN FELLOWSHIP.

"A COMMUNITY CHURCH"  
276290 Jetty Road, Drysdale.  
Phone: 5253 2241

### Service Times:

Sunday Morning: 10.00 a.m.  
Kids Church: 10.30 a.m.  
Toddler Church: 11.00 a.m.  
  
Sunday Evening 6.30 p.m.

Cell Groups operating in homes midweek  
For more details on any of our activities, please  
Contact our church office Monday Thursday.  
(We have a FREE BUS available to transport children  
to and from Kids Church each Sunday morning.  
For details please phone 5253 3218)

# LADIES PROBUS CLUB OF BELLARINE INC.

## REG. NO. A14696T.

The Club continues with some new faces on the Committee.

Margaret Wild will not be following a theme as some other Presidents have before her, her aim is to have a fun and friendship club, no one could possibly disagree with that, unlike many – Margaret did not mind taking the President's office again – she enjoyed it so much the last time and that was not so long ago she wished to relive the memory!

Norma Bushby the retiring President did a good job with the help of her committee.

We are fortunate the subscriptions rate remains the same for another year.

Our speaker for may – Pauline McKenzie was a volunteer at the Sydney paralymphics.

There is a trip organized on May 25<sup>th</sup> to the Parliament House and the new Museum. It is truly amazing

how the trip organizers keep finding such interesting places to go to within reasonable traveling distance.

Cicely Fricker's puppet demonstration and talk was most enjoyable and we are fortunate to have such a talented lady in our club.

We have an interesting year in store – here's to fun and fellowship of Probus.

Iris (Liz) Tolton.

## ROTARY ART SHOW A GREAT SUCCESS

Once again The Rotary Club of Drysdale has held a very successful Art Show over the Easter break.

It all began 25 years ago originally being held at Queenscliff but over the last four years being held at the Parks Hall, Portarlington.

The weather was perfect over Easter for locals and holidaymakers alike. Over fifteen hundred people came through the door to see some of the best artwork yet placed on view in the area.

The Rotary Club of Drysdale was very pleased with the excellent standard of art, whether it was oil, water colour, acrylic, pastel, gouache, etchings, pencil, paper tole, graphite, linocut, porcelain or charcoal, received from artists from the local area, a van load from Melbourne artists and from all parts of Victoria, 420 paintings in all were displayed.

As well as all this the Ladies of Rotary served Devonshire teas and

conducted a stall with delicious home made sponges, cakes, jams, chutney and home crafts were sold raising over \$2,000.00.

The gardeners in the Club also held a plant stall.

Over the past 25 years well over \$200,000 has been raised for local Community based projects.

On behalf of The Rotary Club of Drysdale, I would like to thank you for your patronage of our Art Show it is greatly appreciated.

We look forward to seeing you again next year.

Graeme Allison.

### DRYSDALE REMOVALS & STORAGE

Local, Country,  
N.S.W. & S.A.

PH. (03) 5251 3674



WISE GUYS  
MENS HAIRSTYLIST  
"Its the cut that counts"

So come and see  
Stan, Wendy, Manfred  
for all mens and boys styling  
\* STUDENT AND PENSIONER \*  
DISCOUNTS

No appointment necessary

Shop 1,  
Wyndham  
Street,  
Drysdale.

5253 2206



## Don't Stress We'll Sort Out Your Mess!



PH: 1800 645 545

Management Reports • Payroll Service • Budgeting  
M.Y.O.B. Installation & Training • GST Compliance  
Money Back Guarantee • Free Initial Consultation

# ADVANCED LIFE SUPPORT TRAINING UNDERWAY

Rural Ambulance Victoria (RAV) Paramedics have commenced training in Advanced Life Support (ALS) skills.

RAV Clinical Services Manager Tony Walker said the ALS program would boost services to the Victorian community by providing Paramedics with additional life-saving skills through approved external and internal training courses.

"This will add the skills of advanced airway management, shock management and advanced drug treatment to the already high level of skills being provided by Ambulance Paramedics."

"The ALS program has been enthusiastically embraced by Ambulance Paramedics and provides a quantum leap in the provision and quality of care able to be provided to patients in a cardiac arrest, trauma patients and those in severe pain."

"Over the next three months over 400 rural Ambulance Paramedics will partici-

pate in module one of the program which introduces advanced skills to improve airway management in the unconscious patient and the skill of intravenous cannulation," said Mr. Walker.

"This will be built on later in the year with the introduction of advanced drug treatment to manage patients in severe pain and those in cardiac arrest."

Mr. Walker said the training is also being introduced to Ambulance Paramedic students as part of their Diploma of Ambulance Paramedics Studies program conducted at Monash University Centre for Ambulance and Paramedic Studies.

"In addition to the Paramedics undertaking internal training at Warnambool, Mildura and Bendigo, there are currently 85 RAV Paramedics, primarily from smaller centers, undertaking an approved external "fastrack" ALS program in their

own time at either Monash or Victoria Universities."

"The first of these officers are expected to commence the on-road phase of their training within their communities in mid May 2001 and will be authorized to practice all their ALS skills during this phase."

Mr. Walker said 67 of these Paramedics are being funded through scholarships provided by the Victorian Government with a further 135 scholarships being made available for rural Paramedics from July 2001.

## Tony Walker

Clinical Services Manager  
Rural Ambulance Victoria.  
5337 9305.

**DRYSDALE KITCHENS**  
CABINETS & JOINERY  
PH: (03) 5253 2774  
EST. 1986

## Do you need a housing loan?

Please contact Bellarine Peninsula Community Bank™ Branch at Portarlington, or phone 5259 3266

Bellarine Peninsula Community Bank Branch  Bendigo Bank

www.bendigobank.com.au Bendigo Bank Ltd, Fountain Court, Bendigo VIC 3550 ABN 11068049178 MG125 (02/02/01)

## ROCKET'S DRIVER TUITION



**WE HAVE MOVED**  
but still service Geelong and The Bellarine Peninsula - so give us a ring!

**5253 3140 OR 0419 802 679**

**We Supply**  
EXPERT TUITION AT A REASONABLE COST  
MANUAL & AUTOMATIC VEHICLES  
STUDENT & PENSIONER DISCOUNTS APPLY

## CAREER COUNSELLOR


### SHIRLEY LASHAM

Dip.T, Gr Dip R Ed, Ass Dip T&D, Dip CG  
Australian Association of Career Counsellors Inc.  
**LOCAL - QUALIFIED - EXPERIENCED**  
PH: 5258 3449  
12 California Boulevard,  
Pt. Lonsdale

## INSULATED ALUMINIUM WINDOW SHUTTERS

Protect against heat, cold, wind & noise  
Supplied & fitted direct to public  
**ALL WORK GUARANTEED**  
- We Pay GST -  
- Free No Obligation Quote -  
Ph: 5259 3399 or  
Portarlington 0413 659 667

## BELLARINE CHRISTIAN BOOKS and RESOURCES



- Cards
- Books
- Bibles
- Gifts
- CD's, tapes, videos
- Non-alcoholic wines

Shop 1, 8 High Street, Drysdale.  
Ph: (03) 5251 3491 Fax: (03) 5251 3495

Uniting Church in Australia  
CONCERN

## VILLAGE OP SHOP

Come and browse through our range of good quality ladies and mens wear, plus our selection of young adult and childrens clothing and our range of small household goods.

DONATIONS OF GOOD CLEAN CLOTHING AND SMALL HOUSEHOLD GOODS REQUIRED  
Phone: 5251 3640.  
Shop 19/4 Village Walk, Drysdale.  
Hours: Mon - Frid 10.00a.m. - 4.00p.m.  
Sat - 9a.m. - 12 Noon.

## Bare Rooted Trees & Roses

Available from 6 June  
Large range of fruit and ornamental trees, along with bush, climbing, standard and weeping roses.



**Alinga Nursery**  
Corner Jetty Rd & Railway Cres Drysdale.  
Open 7 days. Ph 52531299

## DRYSDALE CARPET COURT

CARPET - VINYL  
CERAMIC TILES  
FLOATING WOOD  
LAMINATE FLOORS

Proprietor: Neil Petrie  
Phone: 5253 1855 Mobile: 0419 519 030  
63 Murradoc Road, Drysdale.



# WHAT'S ON AT CLIFTON SPRINGS PRIMARY SCHOOL?

This Term is proving to be another busy term for the children and staff. Children in levels 3 and 4 have competed in their annual cross-country event. Some excellent performances were witnessed with the finalists representing the school at Eastern Gardens.

The grade 6 children have just spent a wonderful four days at Halls Gap staying at Camp Acacia. All enjoyed activities such as walking to the pinnacle, the rope course and touring local sights.

Our level 3 children have also participated in a camp to Sovereign Hill. Our campers enjoyed activities such as gold panning, gold pouring, mine tours, visits to the many shops and a classroom session.

Level 2 children recently spent time familiarising themselves with the animals at the Christian College, Bellarine Campus, Environmental Centre, to fit in with their theme work. Thank you to Mr. & Mrs. McKeeman.

A visit by a vet was organised for level 1 children complementing their theme on responsible pet ownership.

On Monday 7th May a special assembly was held in the gym to mark the Centenary of Federation of Australia. Senior students outlined some of the major events and achievements in our country's history. All students received a unique medallion, presented to them by former student, Joanna Wall, who recently represented Australia at the World Junior Cross-country Championships.

Also this term, if you are a regular at the Drysdale Branch of The Bank of Melbourne,

you may have noticed some wonderful pieces of artwork on display by Tegan Winfield (2TW) and Ellen Hyde (2GC). Thank you to Wayne Elliott for giving us the opportunity and space to display work by these talented children.

Finally a word from some level 3 children after their camp at Sovereign Hill.

"At Sovereign Hill, Monday 30th April I saw the man making toffees. I saw some candles being made. He only made white ones. The mine tour was scary and there was dripping water and we had to climb a ladder. The gold pour was amazing, but I wonder what would happen if he dropped

it on his foot. I think it would hurt. I had a great time!" By Rachele Gore 3MM.

"On Monday 30th April I went to Sovereign Hill. We had to be at school by 7:30am. Luckily I made it on time. Finally we got there. We went to explore Sovereign Hill. At one o'clock we went to the Gold museum. I saw heaps of big nuggets of gold. We also saw a movie about gold. Then we went on a mine tour. It was very dark and very cold. Then we went gold panning. I found some gold. I found eight pieces."

By Amie Mason 3CL

*Kerryn Driscoll (Teacher)*



Level 3 children in old classroom at Sovereign Hill.

**HOMES & LAND WANTED.**



We urgently need homes and land to sell to our list of unsuited buyers. If you are considering selling contact me for assistance and professional advice

*Trevor McArdle  
Managing Director.*



**Bayshore** FIRST NATIONAL REAL ESTATE

26 High Street, Drysdale. Telephone 5251 2610

**THINKING OF BUILDING?**

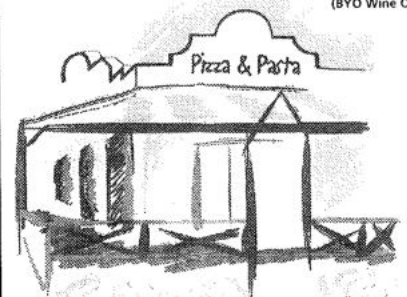
**HOTONDO**

Bayshore First National have been appointed sole marketing agents for this exclusive range of award winning affordable homes. Call in for plans & prices

*Investment packages Available*

Drysdale Village  
**Pizza & Pasta**  
Restaurant

Fully Licensed  
(BYO Wine Only)



**Telephone 5251 3937**

Inquire within for our latest Delivery Specials  
**Open 7 Days A Week**  
Dine-in • Take-away • Home Delivery  
Shop 7/26 High Street Drysdale

Home Deliveries to  
Drysdale • Clifton Springs • St Leonards • Portarlington • Leopold

# HELP US TO HELP YOU - AMBULANCE SERVICE

Rural Ambulance Victoria (RAV) and Rotary have joined forces to produce an easy method of helping people communicate their medical history to Ambulance crews in an emergency anywhere in country Victoria.

"The role of emergency service personnel providing assistance can be made more difficult by not being able to readily access vital information required," said MICA Paramedic Tom Athorn.

"The unconscious or even the confused person may not be able to communicate with ambulance paramedics in their time of need and obtaining personal details and medical history can be critical in some circumstances as paramedics must sometimes make important, life saving decisions."

To overcome this problem Rural Ambulance Victoria and local Rotary Clubs are distributing a special Emergency Medical Information Book throughout country Victoria.

"This Book originated in South Australia as a joint initiative between Rotary International District 9500 and South Australian Ambulance Service," said Mr. Athorn, who is the RAV Co-ordinator for the project.

"These books are of value to any person regardless of age, particularly those with a medical condition, or with known allergies."

"A normally well person with no current medications also should be encouraged to use a EMIB to record their personal details, and to state that they have no current medications or medical problems."

Mr. Athorn said people only needed to follow some basic points to properly use an Emergency Medical Information Book.

- ONE book contains medical information on ONE person.
- The patient information is written into the book and must be kept up to date.
- The book can be kept in a convenient location such as the fridge door by using the magnet pouch.
- The book can be easily taken with a person as they travel.
- The book can be used to provide information to Ambulance personnel, Doctors, or hospital staff.

"This simple book will help emergency service crews gain immediate personal history from people who are unable to communicate due to their medical condition."

Mr. Athorn said as the project draws its origin from the South Australian project that was made possible through the support of Rotary, funding is to be via Victorian country Rotary Clubs in the first instance.

"If there is no Rotary club in a town, or if the local Rotary club does not wish to be involved, then the local Ambulance Auxiliary may sponsor the project."

"A Rotary club and an Ambulance Auxiliary may wish to combine resources to jointly fund books for a particular Branch, or a group of Rotary clubs may wish to combine together to locally sponsor the project."

"Both the Rotary and RAV logo will be printed on ALL book covers. The name of a sponsoring Rotary club/s will appear under the Rotary Logo and the name of a sponsoring Ambulance Auxiliary will appear under the RAV Logo," said Mr. Athorn.

"This will enable the books to be freely distributed throughout the community, even though there is a cost for their production. We welcome any donations to assist with the

production of further copies of this potentially life-saving book."

Rural Ambulance Victoria Chief Executive Officer Doug Kimberley praised MICA Paramedic Tom Athorn for his work in implementing the project.

"Tom is to be highly commended for his initiative in adapting this project for use in rural Victoria. I believe this book will help Rural Ambulance Victoria Paramedics save lives and assist them in providing the community with a high standard of service."

Tom Athorn said the book was initially being distributed through Ambulance Branches and Rotary Clubs at Mildura, Red Cliffs, Irymple, Merbein, Wentworth, Ararat, Charlton, Edenhope, Lakes Entrance, Murrayville, Neerim South, Port Fairy, St. Arnaud, Warrnambool, Yarram, Bellarine, Bendigo, Omeo and Orbost and would soon be available throughout rural Victoria.

Tom Athorn  
MICA Paramedic  
Rural Ambulance Victoria  
5051 1915

or

Doug Kimberley  
Chief Executive Officer  
Rural Ambulance Victoria  
5337 9200

## FREE INITIAL CONSULTATION

- ▼ ACCOUNTING & TAXATION SERVICES
- ▼ SMALL BUSINESS CONSULTANTS

**FTA**  
ACCOUNTANTS & BUSINESS ADVISORS

**5253 2992**

CRN. OF SPRINGS RD. & HIGH ST, DRYSDALE

## Drysdale Spinal & Sports Treatment Centre

15 Collins Street, Drysdale  
For treatment of headaches, neck  
and back pain, joint sprains,  
muscle/tendon injuries.

**5251 2865**

Paul Fargher Sports Physiotherapist      Jack Tinitali Physiotherapist

## BELLARINE AUTO SERVICES

Quality Mechanical Repairs  
Tuning - Servicing  
LPG Conversion - EFI  
Tyres - Batteries - RWC  
Licensed Vehicle Testers

Mortimer St. Drysdale  
Proprietor: J. Pamplin

**Ph. 5253 1644**

## CARPET STEAM CLEANING

MARICK CARPET CLEANING  
DICK BOLAND

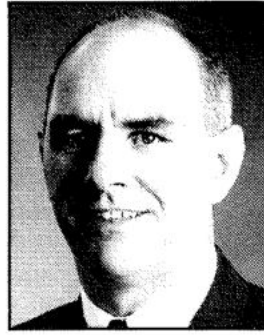
Ph 5259 2217

Mobile 0412 517 065

Carpets, Lounge Suites  
Car Upholstery Stain Guard Available  
FREE QUOTES



## The Professionals



**Phil  
Cumming**  
AH 5251 3047  
0408 599 232



**Gabrielle  
Beams**  
AH 5253 2848  
0412 430 976



**Heather  
Blair**  
OFFICE 5251 2847  
0417 142 516

## SELLING FOR THE BEST PRICE

Many people think that there is a correlation between putting a high initial asking price on an advertised property and achieving a high final selling price.

There's certainly a link, but it doesn't work the way many people think. In fact, the opposite is often the case. If a property is really overpriced, purchasers just sit back and wait to see what happens. If they've been looking around long enough to be ready to commit themselves, they've also made themselves very familiar with what they can get for their money.

It is common for inexperienced vendors to overprice their properties in the belief that the "right" buyer will eventually come along – someone who will fall in love with their property and pay the earth for it.

People buy with their pockets as well as their hearts.

No one goes into a real estate purchase without making comparisons and weighing up all the factors.

Many inexperienced vendors make the mistake of thinking that no matter what price a property is advertised at, purchasers will always make offers.

Put yourself in the purchaser's shoes.

Buying a house is really stressful. Most people won't let themselves get emotionally committed to something they feel is never going to come down to a realistic level. It's easier psychologically to move on and make an offer on something that is more realistically priced.

It is wise to leave a negotiating factor when setting your asking price, but price your property to create a sense of competition so that purchasers will want to snap it up before someone else does. The best price is nearly always achieved in the early stages of marketing.

## Huge Sales Volume Leads To Short Supply.

Since February our Drysdale office has sold over 100 properties at ever increasing prices. House and land packages, established homes and vacant land have been pushed along by the 1<sup>st</sup> homebuyers program and lower than ever interest rates. We currently have a large number of property buyers still looking for properties in the area. If you are considering trading up to a bigger home, or trading down to a more manageable property, then now is the time to talk to us. We have seen some property values rise between 10% and 30% in the last 12 months. This is astounding and we only hope that it continues in the future. For a confidential market appraisal, phone us 7 days a week on 5251 2847.

## Guyett Real Estate P/L

11 Clifton Springs Road, Drysdale

**5251 2847**