

The SpringDale Messenger

Your Free
Community
Newspaper

Compiled and published by the SpringDale Community Cottage Inc A002916V

Circulation 3,700

ABN 21 404 220 267 Vol 11 No.7, September 2001

CONGRATULATIONS TO STUDENTS FROM BELLARINE SECONDARY COLLEGE

ROCK EISTEDDFORD 2001 - MELBOURNE PREMIER DIVISION

"WITH A TURN OF THE PAGE"

Bellarine Secondary College was awarded first place in the Grand Final on September 7, at the Rod Laver Arena in Melbourne. Awards were also presented for Stage Use, Costuming Character, Performance Skill, Concept, Performers Choice.

The theme of the Rock Eisteddford was "With a Turn of the Page." Books create images, ideas, enjoyment, they draw on our emotions and build on our experiences.

With a Turn of the Page you can experience music, dance, science fiction, religion and a host of children's stories. It is hard to put a good book down and when finished, it is difficult to return the much loved book to the library shelves.

The Bellarine Secondary College Rock Eisteddford presented this experience with books in an exciting, bright and colourful dance. 93 dancers, assisted by a backstage crew of 20, took the audience



through this story line.

Once again students at Bellarine Secondary College have shown Victoria the talent and skills that students on the Peninsula have. Well done.

SPRINGDALE COMMUNITY COTTAGE CHANGES ITS NAME AND ELECTS NEW COMMITTEE OF MANAGEMENT

At its Annual General Meeting members of the Cottage voted to change the name to "SpringDale Neighbourhood Centre". The change is a result of funding bodies wanting to more clearly define Neighbourhood Houses. It is also in anticipation of our redevelopment that will provide a community center for the North Bellarine community.

Over the next few months we will progressively alter our signage and brochures and letterhead. We will be announcing a community competition for the design of a new logo for the organisation.

Also at the meeting a new Committee of Management was elected. The following people were elected: Dianne Farrimond - President,

Elva Berry - Vice President, Christine Mortimer - Treasurer, Jenny Bond - Secretary & Public Officer, Ted Chidzey - General members, Anne Brackley, Lisa Ellio, Paul Jones, and Philip Farmer.

There are 6 vacancies on the COM - if you are interested in finding out more information please contact the office.



**DRYSDALE
VILLAGE
HARDWARE**
(03) 5251 3267

YOUR HANDY
HARDWARE
STORE

THE ARCADE
HIGH STREET
DRYSDALE, 3222.



Bank of Melbourne 

**SHOP 9
SUPERMARKET
COMPLEX
DRYSDALE**

The SpringDale Messenger

The SpringDale Messenger is compiled by the SpringDale Community Cottage Inc. A0024916V, 14 Princess St. Drysdale. Postal: P.O. Box 80, Drysdale, 3222.

Editorial and Enquiries:

PH: 5253 1960. FAX: 5253 3050

To improve the administrative arrangements for the Messenger we are encouraging all contributors to provide their information on disk (Word) or email it to us – ATT Rosie on: sprdalecc@primus.com.au. For those who have difficulty providing your contributions on disk we are still happy to accept written copy or make our computers available for your use.

Next Publication:

Copy deadline:

19th October, 2001

Distribution:

2nd November, 2001.

Views expressed in this newsletter are not necessarily the views of the Publisher, the SpringDale Community Cottage Inc.

Advertising:

To ensure publication in a specific issue, copy must be submitted prior to deadline.

This includes both new adverts and alterations to an existing advert. Layout and Design of this issue by Pagnation Design Services, Geelong. For any queries about advertising, please contact Anthony Zavaglia at Pagnation Design Services.

Ph: (03) 5223 2494

Fax: (03) 5221 8063

email: smd@pagnation.com.au

Contents

| | | | |
|---|----|--|----|
| ROCK EISTEDDFORD 2001 | 1 | GOLF CLUB | 16 |
| SPRINGDALE COMMUNITY | | Toy Library | 16 |
| COTTAGE CHANGES ITS NAME AND | | What's on at Clifton Springs | |
| ELECTS NEW COMMITTEE OF | | Primary? | 17 |
| MANAGEMENT | 1 | SPRING PLANTING IN | |
| ROTARY CLUB OF DRYSDALE | 3 | CLIFTON SPRINGS | 18 |
| BLUEY DAY | 4 | DRYSDALE CHRISTAIN | |
| The Portarlington Development | | FELLOWSHIP | 19 |
| Association | 4 | AMBULANCE MEMBERSHIP | |
| DRYSDALE FIRE BRIGADE | | TO INCREASE | 20 |
| ANNUAL 'GARAGE SALE' | 6 | The Drysdale Bowling & | |
| In Your Garden | 8 | Croquet Club Inc. | 20 |
| CLIFTON SPRINGS PRESCHOOL | | Ladies' Probus Club Of Bellarine | 21 |
| NEWS. | 8 | Bellarine Agricultural Show | 22 |
| Drysdale Senior Citizens Club. | 10 | SpringDale Three Year | |
| Springdale Singers Open Day | 10 | Old Kindergarten | 22 |
| The Arrival of the Sneezin' Season | 11 | SPORTS REPORT | 23 |
| ADRIANE MANNIX OAM | 12 | Drysdale Cricket Club is | |
| Cr Heather Wellington | 12 | on the 'web'! | 23 |
| Drysdale Ladies Probus Club | 14 | BELLARINE TABLE TENNIS | |
| Bellarine Open Gardens | 14 | CLUB | 23 |
| It's a busy catchment this Spring. | 15 | SOFTBALL...What a great game. | 23 |
| What's happened and what's happening | | HEALTHY DEBT GROWS WEALTH | 24 |
| at the CLIFTON SPRINGS | | | |

Attention all advertisers

The SpringDale Community Cottage asks that all check payments be made out to **SPRINGDALE COMMUNITY COTTAGE**. This will help tremendously and would be greatly appreciated.

Thank you once again.

BUILDER
Paul Jones Registered B.P.B.
 Ph. 52 513934
 NEW HOMES ~ EXTENSIONS ~ AIR CONDITIONING
 Mobile 0419 354259

Kerry's Nail Elegance
Gel or Acrylic
 Flexible hours available for infills.
 Relaxed, friendly environment.
 Sterilised equipment used.
By appointment only.
Ph: 5253 3107
 Just a short drive from Drysdale shops.
 Amarina Rd Clifton Springs. Melways map ref 238 E.7.

BEE SWARMS COLLECTED.
L. Beck 5251 2938.

ROTARY CLUB OF DRYSDALE



Rotary being a Service Club is structured around four main avenues of Service, and they are: 1. Community Service, 2. Vocational Service, 3. International Service and 4. Youth Service.

During its 26 years of existence, The Rotary Club of Drysdale has been heavily involved with Youth Service in our own locality and on the International level.

Annually the Club advertises and promotes a number of District youth programs in our community which are targeted towards good will and understanding, promote friendship, build self-esteem and confidence which ultimately helps these young people in the choice of their future career paths. Some of the programs offered are: 1. R.Y.P.E.N. (Rotary Youth Program of Enrichment). 2. R.Y.L.A. (Rotary Youth Leadership Award). 3. Siemens Science Experience (for students particularly gifted in the area of Science). 4. Mock Interview program held at the Bellarine Secondary College. 5. Annual \$500 Paul Harris Scholarships

for year 9 & 11 students, introduced in 1999. (Year 2000/2001 recipients were Katrina Gibson, year 9 and Tim Wright year 11 from Bellarine Secondary College). 6. The promotion and support of the "Youthfest 2001" with a \$500 donation.

On the international level our Club has been greatly involved with the Youth Exchange Program which gives 15-17 year old students the opportunity to live 12 months overseas. The programs objective is to promote good will and understanding amongst the young people of the world and at the same time let these exchange students be Ambassadors for their home countries. This youth exchange program leaves a lasting impression on them for the rest of their lives. It means sometimes learning another language, learning a new culture and way of life and make friendships for life.

The Rotary Club of Drysdale has accepted a Rotary Exchange Student for the 2001/2002 Rotary year from Thailand. She was sponsored

by her host Club, The Rotary Club of Hatyai district 3330 from southern Thailand. Her name is Kittiya Lohyukol, affectionately renamed to Kitty by our members. She is attending year 11 at the Bellarine secondary College and has settled in well since her arrival early July. She will be staying with 5 Host families over the 12 months, 4 Rotary and one non Rotary family. Her ambition is to make many friends in Australia and learn about our way of life and customs. On her return home she wants to embark on a Career in Accounting and Small Business Management. In Early May she will join 23 other overseas students from our district 9780 on an outback Safari which will take them up the Center as far as tenant Creek, across to Cairns the Barrier Reef and Sydney. From experience she will be quite a different person on her return to Thailand after her year in Australia.

We have also been successful in selecting an outbound student in Ellen Bartlett from Fyansford. Ellen is attending year 10 at the Christian College, Highton. Ellen will be leaving Australia in early January 2002 for one year in Brazil. She will be hosted by the Rotary Club Adamantina, approx. 500 Km west of Sao Paulo. Ellen is putting a lot of effort in to acquiring the basic Portuguese language skills and we are sure she will have to tell us a lot of her experiences from that unique country on her return.

The Club is investing in excess of \$5000.00 in the 2001/2002 Rotary Year Youth program and we feel very strongly that this investment in our Youth will not be wasted but lay a basis for the future of this country and good will and understanding in the world.

Thomas Erhardt – Chairman P.R.

Uniting Church in Australia

CONCERN

VILLAGE OP SHOP

Come and browse through our range of good quality ladies and mens wear, plus our selection of young adult and childrens clothing and our range of small household goods.

DONATIONS OF GOOD CLEAN CLOTHING AND SMALL HOUSEHOLD GOODS REQUIRED

Phone: 5251 3640.

Shop 19/4 Village Walk, Drysdale.
Hours: Mon - Frid 10.00a.m. - 4.00p.m.
Sat - 9a.m. - 12 Noon.

Spring

It's here at last, there is no excuse not to go out there and see what is alive. Come and see the beautiful plants you could have in your garden from

Alinga Nursery

Cnr Jetty Rd & Railway Crescent
Drysdale Ph: 5253 1299

DRYSDALE CARPET COURT

**CARPET - VINYL
CERAMIC TILES
FLOATING WOOD
LAMINATE FLOORS**

Proprietor: Neil Petrie
Phone: 5253 1855 Mobile: 0419 519 030
63 Murradoc Road, Drysdale.

BLUEY DAY

Hair raising & fund raising work together.

Chris Franklin, 18 year old, lives in Clifton Springs, attends Bellarine Secondary College, plays football for Drysdale and in great need of a hair-cut.

In May this year, Chris set his mind to do the fund raising required for 'Bluey Day'. He has raised the 'goal' total of \$1000.00 by carrying a donation tin at the Drysdale football matches, parties, school and placement on counter tops. Any occasion where a donation could be sort, Chris would have his tin. The 'change' from peoples pockets, which weighed 42kg., made up most of the \$1081.20 raised. The Portarlington / Drysdale Lions Club

and the Drysdale Football Club have supported Chris during the last few months in raising this money for the Royal Children's Hospitals "Kids with cancer" Bluey Day Fund.

Drysdale Football Club was the venue where Chris had his 'Afro' style hair, cut off by Manfred Herzer from Wise Guys Hair Stylist all in the name of charity. Yes, Chris received a FREE hair cut!!

The commitment of Chris and especially, the support from the young



community of Drysdale / Clifton springs should be congratulated.

They have helped a 'Kid with cancer'.

The Portarlington Development Association

Brunch with "Bach and Brubeck" in Portarlington.

The August brunch was a special event. We had our first band, back by popular demand, "Groove Jooce" with Barry Edwards and the trio. Our Bach concert was postponed and will resume in November with a changed format; we propose to have "Breakfast with Bach" our classical music concert starting at 9:30 and finishing at 11 thus giving the smaller restaurants a chance to set up for their important lunch time trade. We are hoping to keep the "Brunch with Brubeck" our Jazz sessions going at the same time but we may have to change to "Jazz in the Afternoon". Please drop Rene a line at P.O. Box 168 Portarlington 3223 to let us know your prefer-

ences. Now back to our August brunch. Everyone just loved the music and brunch fare. The Grand Hotel maintained its high reputation for fine food providing a delicious brunch of home made Mini Beef and Guinness Pie, Vegetarian Pie, Terrines, pickles and a host of other good stuff, the meal was topped off with fresh fruit, melons and other fruits in season. Judging from comments made and the turnout of people this monthly event in Portarlington is gaining in popularity and those wishing to attend are strongly advised to book early to avoid disappointment. Many people are returning each month and bringing their friends along. We have had visitors from all over Melbourne as well as many local Geelong and

Bellarine Peninsula residents enjoying the music in a great atmosphere. The September Brunch with Brubeck will be at The Ol' Duke on Sunday the 30th. This month we have, also returning by popular demand the mellow jazz of "The Judy Strickland Trio" featuring the silken voice of Judy. Phone the Ol' duke on 5259-1250 or Fax 5259-1237 to book your place. Don't forget to let us know what you think about our proposals mentioned above. See you at the brunch on the 30th.

Rene Souery Brunch Organising Committee Portarlington Development Association

FREE INITIAL CONSULTATION

- ▼ ACCOUNTING & TAXATION SERVICES
- ▼ SMALL BUSINESS CONSULTANTS

FTA
ACCOUNTANTS & BUSINESS ADVISORS

5253 2992

CRN. OF SPRINGS RD. & HIGH ST., DRYSDALE

HARVEY
world travel
The Travel Professionals

SCENIC TOURS
The Ultimate Touring Experience
Fly to New Zealand for only \$99.00 each way with any SCENIC TOURS holiday of 14 days duration or more. Hurry seats strictly limited.

Come in to our office and pick-up your SCENIC TOURS New Zealand brochure for other fantastic New Zealand holidays.

EXCLUSIVE TO: HARVEY WORLD TRAVEL

SHOP 2A
6 HIGH STREET, DRYSDALE.
TELEPHONE: 5251 1125
MOBILE: 0417 129702

BELLARINE
VETERINARY PRACTICE
7 Palmerston Street, Drysdale.

Hydro Bath and Grooming

NOW AVAILABLE

For Enquiries
Ph: 5253 1393 or 5248 2009

Merv Nelis (Zenshin) Martial Arts Academy

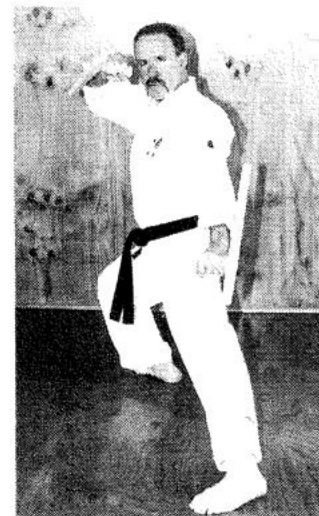
Make This Year Your Most Confident Ever!



What would your life be like if you had more confidence, more energy, and more self-discipline? Would you like to know you could handle yourself in even the most stressful of situations? It's all possible, and it can happen much faster than you imagine.

Better still, you'll thoroughly enjoy the process of transforming yourself into a healthier, happier, more confident person. Our program is specially designed for today's busy person. And our classes are conveniently scheduled so they fit just about anyone's lifestyle.

Make 2001 your year to become the person you've always wanted to be. Try a class this week. Give us a call today!



Through the years, the martial arts industry has grown rapidly. It has grown out of the image of a gym to that of an educational school, with a curriculum which outlines goals and objectives. Many martial art schools still adhere to the training regimes and philosophy of bygone years unable and/or reluctant to move with the times. The age we live in today is fast moving and the way of practice many years past is not necessarily relevant in our Western society.

Merv Nelis Zenshin Martial Arts Academy is one such school that has seen the need for change incorporating a blending of traditional values with contemporary martial arts that offers not only an effective self-defence program but a means for personal development, character development and discipline.

With this formula for success you will be able to handle the constant pressures of everyday living more easily. Zenshin translates to mean total development – we aim to better develop and condition the mind, body and spirit.

Our progressive style of martial arts training will provide the student with a comprehensive course in offensive and defensive techniques. Street self-defence techniques are also a part of the curriculum. Our school emphasizes discipline and the value of persisting until goals are reached. We believe in following a high standard of values to bring out the good and increase the quality of life. Regular attendance of our programs will result in stress reduction and improved health. All students learn to set goals and be self-motivating in achieving them.

At Zenshin we offer programs for all ages ranging from 5 years to 70 years plus. We have many families training together which helps to create a strong family bond by instilling a life-long loyalty. The whole family can learn to live up to their full potential.

Our special "Little Dragons" program (5 yrs to 8 yrs) has enjoyed outstanding success over the last few years. Our unique children's programs use interesting and enjoyable methods to keep the student's attention and teach our young students skills that they can use. We provide non-violent resolutions to conflict. We believe in praise, encouragement and positive reinforcement. We encourage our younger students to give their best at school and to behave courteously at home. We are the only school in Geelong to introduce the highly successful S.T.A.R. program. This program is designed to teach our younger students to use the Stop, Think, Act and Review decision model to solve problems and resolve conflicts.

Enrolments are now being taken for our next course starting soon. Placings are filling quickly so be early in order to secure a position.

If you would like to experience any of the following benefits then Zenshin Martial Arts is for you: Practical Self Defence, Enhanced Conditioning, Flexibility & Coordination, Weight Reduction as well as Increased Endurance and Lowered Heart rate, Confidence and Self Discipline, Enhanced Concentration.

All new students (9 yrs and above) are eased into our program by way of our Orientation Program. This program consists of 2 semi/private classes plus a uniform for the low cost of \$9.95. We believe we can offer our students the best program available anywhere and we back this up with an exclusive no risk 30 day guarantee – within the first month we will refund the full tuition if you are not completely satisfied.

Merv Nelis Zenshin Martial Arts Academy is a full time professional Organisation operating out of Park Street, Belmont (Headquarters) and at Murradoc Road, Drysdale. Classes are offered 6 days a week during the day, evenings and weekends.

Vacancies are now available for all of our programs (Adults and Children), for bookings or further details phone 5244 3722 anytime.

Merv Nelis (Zenshin) Martial Arts Academy

Two Addresses

5 Park St, Belmont

55 Murradoc Road, Drysdale.

Phone

5244 3722

**DRYSDALE FIRE BRIGADE
ANNUAL
'GARAGE SALE'
Saturday 28th October
from 9.00am to 1.00pm.**

The Drysdale Fire Brigade will hold its annual 'Garage Sale' (including the usual cake stall) at the Fire Station.

Any donation of saleable goods of any description (good clean clothes, books, bric-a-brac, furniture, equipment, electrical goods, tools, toys etc.) or a cash donation would be appreciated. Goods can be dropped at the station on Sunday mornings or Monday nights from 15.10.2000 or the brigade will collect saleable items from Sunday 22.10.2000 to Friday 27.10.2000 by phoning Bev Serle on 5251 2576 or Chris Mortimer on 0408 595284.

Your assistance in this important Fund Raising effort would be very much appreciated as the funds raised will be used to improve the service provided to the community.

The DRYSDALE FIRE BRIGADE is also currently in need of new members. We would be interested in hearing from men and women especially shift workers over the age of 16 years that would be available to assist during normal business hours and provide a valuable service to the community.

To inquire about membership please contact,

| | | |
|----------------|------------|----------------------|
| Des Connor | Captain | 5251 2783 0418522881 |
| David Serle | Lieutenant | 5251 3224 |
| Steve Aktinson | Lieutenant | 5251 3177 |
| Daryl King | Lieutenant | 5251 2098 |
| Jeff Stewart | Lieutenant | 5253 2240 |
| Robert Aylwin | Secretary | 5251 2263 |

The brigade meets every Monday night at the fire station at 7.30pm or Sunday mornings at 9.00am and new members are welcome.

DRYSDALE FIRE BRIGADE

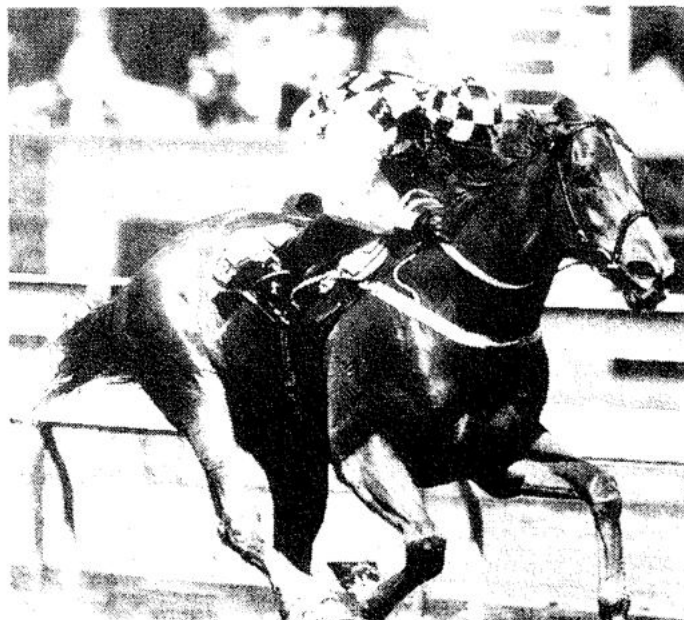
Emergency number (Fire calls only) 000
Brigade Captain – Des Connor 5251 2783
Brigade Secretary – Robert Aylwin 5251 2263
Brigade Business Number 5253 1444



Creating a Safer Community

The SpringDale Messenger

**THE 7 ANNUAL
DRYSDALE FIRE BRIGADE
'MELBOURNE CUP' LUCH 2001
TUESDAY 6TH NOVEMBER 2001
AT
THE CLIFTON SPRINGS GOLF CLUB
Spring Street, Clifton Springs
10.30 am START**



**COMPLEMENTARY SHERRY or CHAMPAGNE ON ARRIVAL
THREE COURSE MEAL WITH DELICIOUS NEW MENU
TEA, COFFEE AND FRUIT CUP ALL DAY
BAR FACILITIES
LIVE TELECAST OF RACES
RACE SWEEPS
FASHIONS ON THE FIELD AND BEST NOVELTY HAT**

\$25.00 PER PERSON G.S.T. Included

FOR TICKETS & BOOKINGS

Contact: Jeff Stewart 5251 2603 (Bus. Hrs.)

Jackie Mortimer 5253 1762

Nicole McGrath 5251 1123

In Your Garden

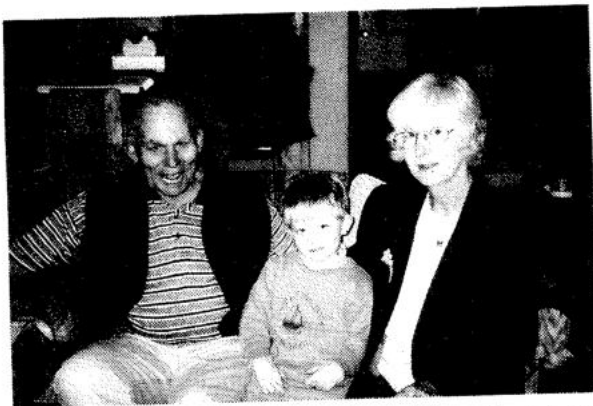
Spring is definitely here, beautiful one minute pouring the next. The rain has been great but the sunshine is absolutely wonderful. The garden seems to think so too, lots of things are growing profusely, as they do in Spring. It's time to make sure that the residents of your garden have enough fuel in the systems to perform up to the high standards that you require, ie. it's time to feed the plants. There are lots of different things to feed the garden with, slow release, all purpose, organic, manures, liquid, etc. The trick is to use the ones you are most comfortable

with and that you get results with. I am a bit of a manure based feeder of plants, but there is still an important place for slow release and liquid feeds. Manure as food, not only provides goodies to the plants but also adds humus to help condition the soil, making it a happier place for microbes and worms to do their thing, which is good. It will also act as a barrier to the drying affects of the sun and wind. It's biggest drawback is that the dog absolutely loves to roll in it and if the bits are the right size, eat it. Try to make sure that the foods you use are reasonably bal-

anced in both Nitrogen/Phosphorus as well as their affect on pH. Ideally you do not want to change the pH of your soil by very much as a result of the food you feed your plants. Except if you are being clever and trying to trick your Hydrangeas into being a specific colour or something like that. If everything is kept in balance then there are less problems to have to overcome other than just keeping things alive.

Neil Muhlhan - *Alinga Nursery*

CLIFTON SPRINGS PRESCHOOL NEWS.



Central Road Clifton Springs. We have had a productive and exciting time at preschool over the last month. We have had Grandparents week when Grandparents were all

invited to spend some time at Preschool. We were all invited to spend some time at Clifton Springs Primary School, which was a fantastic experience for those who attended. We have had our monthly family picnic day when we invite our families to have lunch with us. We attended a performance by the Lightning Creek Band at Clifton Springs Primary School, which was a fantastic experience for all of those attending. This coming week we are on the bus again, this time we are

off to The Marine Discovery Centre in Queenscliff to learn more about our local Marine Environment. We have also been very busy at kinder with our musical instruments, our tents and camping gear and of course many other exciting activities. We have our Garage Sale Fund Raiser for the Preschool on Saturday 22nd September at the Preschool with a variety of goods donated by our families and friends. Enrolments are now being taken for 2002 so hurry as to avoid disappointment as limited places are available. Contact Eril or Julie for more information on 5251 3158.

*The only Funeral Directors
Permanently situated on the
Bellarine Peninsula.*



**DRYSDALE
&
PENINSULA
FUNERAL SERVICES**

Committed to Caring

PHONE: 5251 3477
24 hours - 7 days

**D.L. & A.G.
Robertson
Plumbing**
Licence No. 38872

PLUMBER * ROOFER * GASFITTER
Maintenance & New Installations

David & Andrea Robertson
Phone: 5253 2134 Mobile: 0411 532 133

Chui Yuan 酒翠
Chinese Restaurant 家園
(B.Y.O.)

TAKE AWAY & HOME DELIVERY
FUNCTIONS & GROUP BOOKINGS A SPECIALTY
QUALITY & CLEANLINESS ARE PARAMOUNT
REASONABLE PRICES

* \$6.00 LUNCH SENSATION MENU

Ph. 5253 1788
Shop 2, 26-28 High St. Drysdale, 3222.

NEEDLE SYRINGE PROGRAM

Are you using drugs?
If so, then protect yourself from HIV and
Hepatitis C.

Obtain clean fits from the Drysdale
Community Health Service
21 Palmerston Street, Drysdale.

A CONFIDENTIAL service.
No questions asked.



**FLEA
BUSTERS**
MOBILE DOG WASH

Clipping, Bathing & Grooming

"A complete service
by the true Professionals".

5281 1711

Professional Service For All Breeds At
Your Own Home

Clifton Springs Golf Club

Play By The Bay



New Menu -- New Menu

Great Food -- Great Views -- Great Prices

Peter and Kate Crowley

are now running the Bistro with the best view on the Peninsula

TRY OUR FABULOUS \$5.50 LUNCHES

(Monday to Friday only)

SUNDAY LUNCH ROAST
3 Courses for only \$11.00

A-La-Carte menu also available

Dine on
Friday and Saturday nights
Have a chance to win a
Lucky Diners Prize

**October - November
Live Entertainment
(7.00pm-10.00pm)**

Friday 5th - Ramble Tamble
Friday 12th - Graeme Lear
Friday 19th - Shazaam
Friday 26th - Shaun Keet
Friday 2nd - Utopia
Friday 9th - Graeme Lear
Friday 16th - David Fox



Morning Melodies
29th October
Starring
JEANA DAVIDSON
\$10.00 show & Meal
\$5.00 show only

Golfing Memberships
new season commences
1ST OCTOBER

12 Month Membership for only

| | |
|--------------------|----------|
| Playing Membership | \$396.00 |
| Country Membership | \$198.00 |
| Junior Membership | \$110.00 |

SHOW SPECTACULARS

SAT OCT 20TH

The Man of Many Faces

COMEDIAN JOHN COUZENS

2 course meal and show \$25p.p.

**SUNDAY TO THURSDAY EVENING
\$3.50 MEAL DEAL**

Buy one main meal off our regular menu
and receive another of equal or less value
for only \$3.50

on presentation of this coupon
(not valid Public Holidays and Long Weekends)

valid until 30th October 2001

Phone Bookings-52513391-

Drysdale Senior Citizens Club.

Firstly a message from President Jean, she suggests that with the cold and wet weather we are having, why not come up to the warm and comfortable club rooms. Life can be very lonely if you stay at home on your own so make the first step and come and talk to us PLEASE.

I am pleased to announce that the Entertainment Afternoon followed by Devonshire Tea, which, unfortunately had to be cancelled earlier, will now take place on Monday the 19th of November, and we look forward to this, with Mavis and her "Showbiz Group" doing the honours. More on this in the next edition.

We are still needing a pianist, so if there is anyone out there that could give us a couple of hours of their time, to help us put on a small variety show from time to time for our members, we would be more than happy to hear from you. Please ring 52531852 and make our day.

Ruby our Trips Organiser is arranging a day trip out to Torquay and surrounds on Tuesday October 30th, for more details on this see the no-

tice board at the club re cost and times etc.

The Bingo Afternoon on Monday October 1st will start 12 noon with soup and sandwiches, the cost of the lunch will be \$3.00. Bingo on the first Monday of each month commences at 1.15pm and is open to Non Members, all you do is pay for your cards and 50 cents for tea/coffee and biscuits, so do come and join us. ALL WELCOME.

The Card Sessions at the club are on Mondays and Wednesday afternoons, we have people who are willing to teach Hand And Foot, Solo, etc. Starting times 1.15pm Mondays and 1.00pm on Wednesday. We are still urgently needing Volunteer Drivers, and Jockeys for the first Monday of each month, if we can get a few more it would be only once every six or seven weeks you would be called upon, so please help if you can. Get well soon wishes to all our sick members.

Spring is here and hopefully some better weather to cheer us all up. Until Next Edition, God Bless All, Iris M. Astill.

Springdale Singers Open Day

The Springdale Singers, the peninsula community choir, welcome visitors who drop in to their rehearsals at any time, but once each year issues a special invitation to everyone who would enjoy a pleasant afternoon of good music.

The annual open day is on Tuesday the 23rd. October at 2.00 pm in the Community Hall in Drysdale, when the choir will present a selection of the items most enjoyed by and chosen by the members.

The music covers a wide range of periods and styles in a program demonstrating the ability of the choir, and visitors are invited to join with the choir members for refreshments at the end.

A good afternoon of singing - and at no cost. All welcome.

Springdale Singers open day, Tuesday 23 October at 2.00 pm in the Community Hall High Street, Drysdale.

RECORD SALES

Due to continuing record breaking sales over recent times we are desperately short of listings in all price ranges. As a result, we have many inquiries from potential purchasers who are still waiting to buy.

We need your home to sell urgently! If you have been considering selling your property **NOW** is the time to list it for sale while prices are good and buying inquiry is strong.

C.J. Keane & Co. boasts a ten office network servicing the Bellarine Peninsula, Geelong & the Surf Coast. We offer 7 days a week service from sales staff who are part of the local community.

Contact us today for a free and confidential appraisal on your property.



... For more than 60 years C.J. Keane & Co has helped local residents buy and sell homes. We know your neighbourhood and what is Happening with property values. If you think That experience counts, give us a call ...

CJKeane
& CO.
5251 2388

The Arrival of the Sneezin' Season

September may signal the beginning of warm weather, the sign that summer is on the way, but for many Australians spring is the start of a season of misery. More than 25% of people in Australia suffer allergy symptoms of one form or another. Most commonly these symptoms take the form of hayfever. Hayfever is more correctly called allergic rhinitis, because although you might get hot and bothered, fever is not one of the many symptoms of hayfever. Rhinitis means inflammation of the nasal passages; and it's this inflammation that causes the problems – the itch, the sneezing, the watery discharge and the nasal congestion. It seems that those of us who suffer from hayfever are the sensitive guys and gals. We over-react to what for most people would be harmless substances – dust and dust mites, animal dandruff and fur, mould and particularly at this time of the year – pollen. Hayfever is related in many ways to asthma, where the airways are pre-sensitised to certain trigger factors; and whilst hayfever is not life-threatening, as uncontrolled asthma can be, it can certainly have a severe impact on our lifestyle. As well as the inconvenience of the nasal symptoms, people with chronic (that is, long-lasting) hayfever must also deal with the effects the condition has on their everyday life. Loss of sleep, headaches, impaired concentration and reduced efficiency at work are frequently reported. Sinusi-

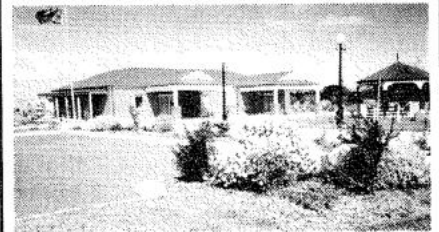
tis means that the sinuses (the air spaces in the bones behind the nose) become inflamed and blocked. For many people sinus problems begin with an allergy, although sinusitis can also be caused by an infection. If you suffer from hayfever or sinus problems all the best advice and the latest information about how to manage or even prevent these conditions is available on the Hayfever and Sinus Problems "Self Care Fact Card". This is one of more than 60 cards available from pharmacies around Australia providing Self Care health information produced by the Pharmaceutical Society of Australia. Of course, if we can identify the substances that cause our allergies and avoid them, then this is the most effective action to take. Nevertheless, if pollen is the culprit in your case, walking around all day wearing a face mask is not always the most appealing thing to do. The new, non-sedating antihistamines play an important part in managing hayfever, especially when the symptoms are mild and occasional. They can also be very useful when taken just prior to exposure to a known trigger factor. You can take products like Claratyne before venturing out on a windy day, before mowing the lawn or before going on that picnic in the country. When nasal congestion is a symptom, the decongestant/antihistamine combinations Clarinase and Sinease are useful treatments. For long term use the specially formu-

lated anti-inflammatory nasal sprays such as Aldecin, Allermax, Beconase or Rhinocort are good alternatives. Discuss your own needs with your local Self Care pharmacist – especially if you are taking other medicines.

VIC OFFICE
381 Royal Parade
PARKVILLE
VIC 3052
Ph: (03) 9903 9600
Fax: (03) 9903 9585

CHARLES CRAWFORD & SONS

FUNERAL DIRECTORS



CNR PORTARLINGTON & COPPARDS RDS
24HRS GEELONG 7 DAYS

FOR CARING, PERSONALISED
FUNERAL SERVICES FROM
\$2,200 (inc. G.S.T.)

PHONE
TERRY & CAROL CRAWFORD

on: 5248 5500

INSPECTION OF OUR CHAPEL AND
FACILITIES MOST WELCOME

PREPAID & PRE-ARRANGED PLANS AVAILABLE

ELECTRICIAN

Terry Parsons
REC 12985

- * Safety Switches
- * Surge Protectors
- * Ceiling Fans
- * Stove repairs
- * Telephone Points
- * HWS

Phone 0412 157 842 AH: 5259 3100
Domestic & Commercial

CAFÉ A BICA



Excellent Coffee!

Morning & Afternoon Teas
Light Lunches & Snacks
Cakes, Slices & Homemade Muffins
Homemade Quiches & Lasagne
& Much More!

Drysdale Village Shopping Centre (Opposite Safeway)
Open Mon-Fri 9-5 Sat 9-2
Ph 5253 1200

JAY-JAYS

MOWING AND HOME IMPROVEMENT SERVICES

- * Gardening
- * Rubbish removal
- * Pergolas
- * Landscaping
- * Cleaning gutters
- * Weed control
- * Painting
- * Deckings
- * Lean-to's
- * Tree pruning

Domestic cleaning – Home or Business
Gate making – Steel or Timber
All round general maintenance

FOR FREE QUOTE & FRIENDLY SERVICE
CALL JAMIE 0412 432 311
10 YEARS EXPERIENCE.

DRYSDALE

HOTEL



- Open 7 Days
- New Winter menu
- Cosy log fires
- Daily blackboard specials

High Street, Drysdale.
Bookings Ph: 5251 2301



Quality Butcher

PETER HOMMELHOFF

HOMMY'S QUALITY MEATS

For something new and different

16 High Street, Drysdale 3222.
Phone: 5251 2270

The Springdale Messenger

Page 11

COMMUNITY SERVICES AWARD

ADRIAN E. MANNIX OAM

The Rotary Club of Drysdale and the Portarlington/Drysdale Lions Club are pleased to announce the establishment of the Adrian E. Mannix Community Services Award. This is a joint initiative and has been established to acknowledge people contributing their time to improve the local community in which they live and/or work.

The Award is designed to enable the community to nominate people whose contributions have largely gone without recognition. We all know someone who quietly contributes to building a stronger and more cohesive community. This is an opportunity to acknowledge that contribution.

The winner of the award will receive \$500 towards their nominated charity/community service organization.

Nomination Forms and selection criteria will be published in the next edition of the Messenger and nominations will close on the 10th of December with an award evening on the 26th of February 2002.

For further information contact Lisa at SpringDale Community Cottage on 52531960

This initiative is supported by SpringDale Community Cottage.

Cr Heather Wellington

The Drysdale/Clifton Springs Community Association and the Springdale Community Cottage hosted a public meeting at the Potato Shed Performing Arts Centre in early August. About 50 people attended and discussion was wide-ranging. I provided an update on Council activities, Elaine Carbines MLC presented an overview of state government initiatives, and council officers provided updates on a range of local issues. There was lively questioning and the evening concluded with a tour of the Potato Shed. Thanks to Wayne Elliott, the Association and the Cottage for arranging the meeting. A "Meet the Mayor and Councillors" session will be held at the Potato Shed in September. All Coryule residents are welcome to attend. Details of date and time will be distributed by letterdrop. The Indented Head Community Association

is moving towards incorporation. At a recent meeting details of the constitution of the Association were confirmed and an interim committee was elected. Members of the Association are working with Council, Barwon Water and the Department of Natural Resources and Environment to develop a long term drainage strategy for Indented Head. VicRoads is currently undertaking a study of the need for a ring road for Geelong. A Community and Agency Reference Group, chaired by Council officers, has been established to provide community input into the study. The first workshop was held on 23 August 2001. Two further workshops will be held, with the Drysdale/Clifton Springs Community Association being represented by Wayne Elliott. The Bellarine Community Health Centre hosted a multicultural evening at

Portarlington in late August. Representatives of many communities attended and the evening was filled with food, fellowship and music. We are fortunate to have such an active multicultural community on the Peninsula and it is hoped that the event will be repeated next year. Council is progressing plans for the new Drysdale toilet and a site will be agreed in consultation with the Community Association, the Historical Society and the Springdale Cottage. Residents will be advised shortly about arrangements for a once-off hard waste collection. This is an opportunity to clean out the garage! Details will be advised by letterdrop. I have met with a range of community groups during the month. I am happy to be contacted about any issues of concern - phone 0409 809941. Cr Heather Wellington

PREMIER WINDOW SHUTTERS 

INSULATED ALUMINIUM WINDOW SHUTTERS

Protect against heat, cold, wind & noise
Supplied & fitted direct to public

ALL WORK GUARANTEED

- We Pay GST -
- Free No Obligation Quote -

Ph: 5259 3399 or 0413 659 667

Portarlington

Salvation Army Family Stores

Mortimer St. Drysdale

Ph. 5251 2475

Plenty of Bargains

The Place to Shop

Come and see us We are here to Help You

MAGGIE GOVE N.D.

Bowen Therapist & Naturopath

Member of A.N.T.A.

Drysdale: Clinic 03-5251 1188

Ah 03-5253 2230

(Rear of Elegant Profile)

RESURFACE OLD CONCRETE

- * Patios * Paths * Steps
- * Driveways * repaired and coated with natural stonechip * Non-slip
- * Durable * Colourfast * Guaranteed

For free measure and quote

Phone ROB or RALPH

5251 3225 0419 895 707

Permacoat ABN 984212801

MISSING LINKS MOTORCYCLES

INDUSTRIAL STRENGTH PERFORMANCE

CUSTOM ROAD OFFROAD

- General Repairs
- Services
- Tune-Ups
- Full Rebuilds

Phone **5253 2269**

6/21 Murradoc Rd. Drysdale

BONE MARROW RECYCLE SHOP

High St. Drysdale

Donations of good clothing and brick-a-brac needed.

All proceeds from our shop go to help those with Leukaemia

SPRINGDALE COMMUNITY COTTAGE

Human
Services



COURSE GUIDE FOR TERM 4 - Year 2001



Adult Education in
the Community

ADULT EDUCATION PROGRAMS...CHILDREN'S PROGRAMS...CRAFT & GENERAL INTEREST

For More Information or to Enrol Contact
Springdale Community Cottage

9.30am - 3.30pm Monday to Thursday; 9.30am-12.30pm - Friday

or

call into 14 Princess Street, Drysdale, 3222

Childcare available to daytime classes at \$5.00 per class - bookings essential
5% discount on some classes to concession card holders

ALL COURSES MUST BE PAID FOR 1 WEEK PRIOR TO COMMENCEMENT

Should a class be cancelled due to lack of enrolments or another reason fees are refunded in full and enrollees notified by phone. People wishing to withdraw from a course must do so prior to commencement of the course. Where fees have been paid a refund will be issued with an administrative fee of \$8.00 deducted. Where a person withdraws after commencement of a course the full cost of the course will be charged.

HEALTH & WELLBEING

Yoga Therapy

Experience balance & harmony of mind, body, emotions & spirit. Exercise through breathing, stretching and relaxation.

Thursday 6pm -7.30pm
from 18th Oct - 13th Dec

or Thursday 7.45 -9.15p.m.
from 18th Oct - 13th Dec

Fee: \$82.00, 9 * 1 1/2 hr sessions
Tutor: Glenda Breedweld. Venue:
Bellarine Community Health Center
- 21 Palmerston St, Drysdale

Introduction to Tai Chi

A gentle relaxing exercise program, to calm and focus your mind and relax and strengthen your body.

Learn the Sun Style beginners Tai Chi Form; a simple, easy to learn set of 12 movements. This form is also highly recommended for those who suffer from arthritis, as well as for any-one who wants to learn the basics of Tai Chi. The instructor has trained with Dr. Paul Lam in Sydney, as well as having extensive teaching experience in Melbourne. Commences, Monday 15th Oct - 10th Dec, 6.30pm - 7.30pm.

Fee: \$72, 9 * 1hr sessions

Tutor: Sue Simpson

Venue: Bellarine Community Health Centre 21 Palmerston St. Drysdale

Advanced Tai Chi Classes

An Advanced Tai Chi Class is also run weekly for those who have completed the Beijing form.

Commences, Monday 22nd Oct - 10th Dec 7.45-8.45p.m.

Fee:\$72, 9* 1hr sessions

Tutor: Sue Simpson Venue: Bellarine Community Health Centre

First Aid Level 2

Summer Holidays are on the way, this means family gatherings, pools, outdoor activities. A lot of fun but accidents can and do occur; often when you least expect it. Learn what to do in a life threatening emergency situation. First Aid knowledge can save lives! Don't put it off any longer, enrol today. This is an accredited certificate (valid for 3 years) Participants who complete the course will be competent in managing life threatening emergencies at home, at leisure or in the workplace. Commences, Mondays, Oct 15th - Nov 12th, 6.30pm - 9.30pm
Fee \$130.00, 5 * 3 hour sessions.
Tutor: Kym Eden
Venue: SpringDale Community Cottage Childcare room.

C.P.R Update

It is advised that CPR updates occur annually. Refresh your skills and enjoy peace of mind.

Commences October 15th Fee: \$30, 1 * 3 hr session Tutor: Kym Eden
Venue: SpringDale Community Cottage Childcare room

An introduction to Self Defence for Women

For beginners, this workshop caters for women of all ages and levels of physical fitness. Techniques taught are simple and easy to learn and use. Basic principles of Self Defence are covered. Come along and bring a friend.

Commences Monday, Nov 19th - Nov 26th, 6.30pm - 9.30pm
Fee: \$50, 2 * 3 hour sessions
Tutor: Lynden Baxter
Venue: SpringDale Community Cottage Childcare room.

Belly Dancing

Enjoy this age-old celebration of dance. Inclusive of all age groups, body sizes and fitness levels.

Beginners (level 1)

Tuesday 9th Oct - 11th Dec, 7.00pm - 8.00pm (excludes 30th Oct, 6th Nov, 20th Nov)

Fee: \$30.00, 7 * 1 hr sessions
Venue: Drysdale Community Hall - High Street

Tutor: Delyce England

Level 2

Tuesday 9th Oct - 11th Dec, 8.15pm - 9.15pm (excludes 30th Oct, 6th Nov, 20th Nov)

Fee: \$30.00, 7 * 1 hr sessions
Venue: Drysdale Community Hall - High Street Tutor: Delyce England

Thursday afternoon Class (all levels welcome)

Commencing Thursday, 8th Nov - 13th Dec, 1.30pm - 2.30pm Fee:\$25, 6 * 1 hr sessions Venue: SpringDale Community Cottage (Child Care room) Tutor: Delyce England

ARTS & CRAFTS

Watercolors

Interested in painting in Watercolours? Yes, then this is the course for you! This class is designed for new starters and those with some basic Watercolour experience. A chance

to begin a new hobby, or develop skills further. Run by a qualified art tutor.

Commences Tuesday, Oct 30th - Dec 11th, 10 am - 12pm

Fee: \$72.00 + supply of some materials, (list available at Springdale) 7 * 2 hr sessions

Tutor: Brian Close. Venue: Springdale Community Cottage

Introduction To Drawing (using pencil and charcoal)

This class is designed for beginners. Go on, explore your creative side and book today. Commences Tuesdays, 30th Oct - 11th Dec, 1pm - 3pm, 7 * 2 hr sessions

Fee: \$72 + supply of some materials, (list available at Springdale) Tutor: Brian Close

Venue: SpringDale Community Cottage

Christmas Folk Art Workshop

These two sessions are designed for the participant to experience folk art with little fuss and maximum enjoyment. Our wonderful tutor has come up with a Christmas Project to welcome in the festive season using this decorative paint technique to decorate a Christmas item. All materials are provided, so come along, bring a friend and get into the Christmas spirit.

Commences Monday 3rd Dec - 10th Dec, 1.00pm - 3.00pm

Fee: \$15(+ cost of kit paid to tutor: \$20.)

Tutor: Delyce England

The Following Christmas Craft Sessions will be held in early December (dates to be confirmed) Please ring Springdale to register your interest on: 5253 1960

Tree Top Angels

Create a gorgeous angel to place on top of your Christmas tree, or decorate the house with. All materials will be provided. Bring a friend and create an angel to be treasured.

Fee: \$10(+ \$5 kit to be paid to tutor on day) 1 * 2 hour session
Tutor:Gloria Stead

Venue: SpringDale Community Cottage

Gingerbread Cookies

Decorate a variety of Christmas cookies to impress family and friends. All materials provided. Great as a gift, or to take home.

Fee: \$10(+ \$5 kit to be paid to tutor on day) 1 * 2 hour session
Tutor:Gloria Stead

Venue: SpringDale Community Cottage

Christmas Vests

Decorate a vest to brighten the Christmas season, using Christmas applique, and decoration. Fun and festive.

Fee: \$10(+ \$5 kit to pay to tutor on day.) 1 * 2 hour session. (BYO Vest)
Venue: SpringDale Community Cottage

COMPUTER CLASSES

Introduction to computers and the Internet for over 55's

This course is aimed at people over 55 years of age who have never used a computer, or who have had only minimal experience. Such a course helps to overcome the fear of using computer technology, teaching basic skills that can be built on, as experience and confidence is gained. All people who complete the course will be issued with a certificate.

Mondays 15th Oct - 26th Nov, 9.30am - 12.00pm or 1.00pm - 3.30pm

Fridays 19th Oct - 30th Nov, 1p.m-3.30p.m.

FEE: \$50, 7 * 2.5hour sessions. (\$16 + \$34; amenities fee+internet access)

This is a subsidised course for those 55 years and over.

Tutor: Lynette Brook

Venue: SpringDale Community Cottage.

Introduction to Computers and the Internet (general)

Suitable for beginners and those with basic skills

Mondays 15th Oct - 26th Nov 5.30pm - 8pm Tutor: Chris Hackett

Tuesdays 16th Oct - 27th Nov 9.30am - 12.00pm Tutor: Lynette Brook

Fees: Full course fee \$95.00, 7 * 2.5 hour sessions. If eligible for a subsidy \$50.00 (\$16.+\$34 amenities fee +internet access) Subsidised places are available for those seeking re-entry into the workplace, unemployed and over 55's.
Venue: Springdale Community Cottage

An Introduction to Internet and Email

Springdale Community Cottage through the support of VICNET are providing affordable internet access and training to the local community. These workshops will provide beginners with a basic grounding in how to use the Internet and email in a friendly and supportive environment. Each workshop is made up of 2 x 2.5 hour sessions. Those eligible to register will receive 5 hours of Internet access time at the Centre (free of charge) after completing the course. So, come along, bring a friend and come surf the world wide web!

Internet and Email training (general)

Mondays 3rd & 10th December 6.30pm - 9.00pm. Tutor: Julie
Thursdays 6th & 13th December 1.00pm - 3.30pm. Tutor: Sue
Venue: Spring Dale Community Cottage
FEE: \$20 for 5 hours training, (2 * 2.5 hour sessions)

Internet and Email for Seniors

Tuesdays 16th & 23rd October or 13th & 20th November 1pm - 3.30pm Tutor: Sue
Venue: Spring Dale Community Cottage
FEE: \$20 for 5 hours training, (2 * 2.5 hour sessions)

Job Searching on Line

Learn how to utilize the Internet & Email to browse, search and apply for jobs on line. This class will also include the laying out and attaching of a resume.

Tuesdays 27th Nov & 4th Dec 1.00pm - 3.30pm Tutor: Sue
Venue: Spring Dale Community Cottage
FEE: \$20 for 5 hours training, (2 * 2.5 hour sessions)

GENEALOGY

Learn how to trace your family tree on line

Wednesdays 17th & 24 October 1.00pm - 3.30pm Or Thursdays 18th - 25th October 9.30am - 12.00pm
Tutor: Marg Toliday
Venue: Spring Dale Community Cottage FEE: \$20 for 5 hours training, (2 * 2.5 hour sessions)

Introduction to Publisher

This 4 week course is an introduction to desk top publishing (publisher 98) Applications covered will include: Working with clip art and with text. This will enable you to produce greeting cards, flyers, newsletters etc. Basic computer skills are required.

Fridays 19th Oct - 9th Nov, 9.30-12p.m
Thursdays 18th Oct - 8th Nov, 6.30pm - 9pm
Tutor: Lynette Brook Fee: \$85.00
4 * 2 1/2 hr sessions
Venue: SpringDale Community Cottage

Intermediate Microsoft Word

This 4 week course introduces the learner to tab setting, tables, paragraphs and page formatting. Basic computer skills are required.
Wednesdays 7th Nov - 28th Nov, 5.30pm - 8pm Tutor: Chris Hackett
Fee: \$85, 4 * 2.5 hr sessions
Venue: SpringDale Community Cottage

Introduction to Excel

Learn about spreadsheets, formatting, creating charts and more.
Fridays 16th Nov - 7th Dec, 9.30am - 12pm Tutor: Lynette Brooke
Fee: \$85, 4 * 2.5 hour sessions
Venue: SpringDale Community Cottage

MYOB Workshops

These workshops are designed to enable users of MYOB to expand their knowledge of MYOB and use it more efficiently and effectively. The workshops will provide updates, tips and important information on using MYOB appropriately. Pre-requisite: participants must be computer literate, have basic book-keeping and MYOB knowledge.

Workshop 1

MYOB for small business operators, owners and / or staff. (also suitable for book-keepers.)
Commencing Thursday, 22nd Nov, 6.30pm - 9pm. Fee: \$20, 1 * 2.5 hour session.

Tutor: Joanne Marshall
Venue: SpringDale Community Cottage

Workshop 2

Learn how to put you logo in and customize your invoices to present it professionally.

Commencing Thursday, 15th Nov, 6.30pm - 9pm. Fee: \$20, 1 * 2.5hour session

Tutor: Joanne Marshall
Venue: SpringDale Community Cottage

Digital Imaging

An overall introduction to the latest Digital Image technology and how to apply them. Topics will include digital theory, computer systems, digital input (scanners and cameras) image editing software and digital output (printers, film recorders etc). Emphasis during this course will be on practical demonstrations and hands on practice. Experience with computers and Windows software is desirable.

Commences Tuesdays, 13th Nov - 11th Dec, 7.00pm - 9.30pm Fee: \$77 for 5 * 2.5 hr sessions

Tutor: Terry Oakley.
Venue: SpringDale Community Cottage

Computer and Internet Access

When our Computer room is not being used for classes, it is available for public use at minimal cost. Bookings are essential.

GENERAL INTEREST & SKILLS

Career Planning - An introductory workshop

A 3 hour introductory session which gives people an opportunity to consider the issues faced when considering changing career direction. An opportunity to talk with a qualified career counsellor.

Commences Monday, 22nd Oct, 6.30pm - 9.30pm, or Friday, 26th Oct, 9.30am - 12.30pm Fee:

\$20, 1 * 3 hr sessions

Tutor: Shirley Lasham. (career counsellor)

Venue: SpringDale Community Cottage

Apply Food Handling and Safety

Safe food handling skills are essential for your business. This accredited course gives you the necessary knowledge and skills in correct and safe food handling, food storage and food hygiene. On successful completion, students will be awarded a certificate. Participants will be required to provide their own pen, paper and folder.

Commencing Tuesdays 6th Nov - 20th Nov, 6.00pm - 9.00pm

Fee: \$20, 3 * 3hr sessions (\$9+\$11 amenities) Includes manual.

Tutor: G.A.T.E

Venue: CFA - Drysdale

Marketing and Sales Promotion

This module (which is from Certificate 3 in Small Business Management) is designed to enable participants to develop and implement effective plans to promote and market their products and or services. It is suitable for persons of minimal previous business experience who propose entering the area of small busi-

ness management for the first time and for current small business operators who would like to operate and/or increase their skill level. On completion of the module, successful participants will be entitled to a statement of attainment. For more information call Springdale on 52531960

Commences Mondays, 15th Oct - 3rd Dec, 9.30am - 12pm

Fee:\$30 (\$20 + \$10 amenities) 8 * 2.5 hour sessions

Tutor: G.A.T.E

Venue: SpringDale Community Cottage

CHILDREN'S PROGRAMS

Occasional Care

Three hour sessions enable parents to take a break, undertake a class, do shopping etc. It also gives your child an opportunity to socialise and play with other children in a supervised program with qualified staff. Sessions are Tuesday, Wednesday & Friday mornings - 9.00am to 12pm Fee:\$14.00 per session - Special rates apply to families with more than 1 child attending. Term 4 commencing Tues 9th Oct

3 year old kindergarten

Thursdays 9.30am - 11.30am Fee: \$45 materials fee, + \$100 per term

ENQUIRE NOW FOR PLACES FOR 2002

Play Group- Expression of Interest

Are you a Mum or a group of Mums who likes to meet weekly for a cuppa and a chat while the kids play? Would you like to give the house a rest and use someone else's wonderful facilities? If the answer is yes then give us a ring at the cottage. We have a wonderful Childcare area that has all the facilities required for a play-group (including tea and coffee making facilities for parents)

Weekly Craft Groups

An opportunity to meet other people and to learn new crafts or teach others your specialty. Meet weekly during school terms. Cost is \$5.00 (one off registration) \$2 per week. New members welcome.

Wednesday Morning Group 10am - 12pm (childcare available)

Wednesday Afternoon Group 1pm-3pm

Friday afternoon Craft Group

Fridays 1pm - 3pm (childcare available)

Writers Group

This group meets the 2nd Thursday of each month 1pm- 3pm at Springdale Community Cottage. New members welcome.

SpringDale Singers

A mixed voice choir meet on Tuesdays from 1.30pm to 3.30pm in the Drysdale Hall. New members welcome. Persons interested may come as visitors on any day.

Note: SpringDale Singers Open Day - will be on Tuesday 23/10/01, at 1.30pm.

Walking Group

This friendly group meets at SpringDale Community Cottage each Wednesday at 9.30am before it sets off for a walk around the streets of Drysdale. New members welcome.

Youth Group

Are you between 13 and 17 years old? Looking for something to do? Want to make some new friends? Then this is for you! Friday nights filled with activities, food & fun, in house activities and excursions. Venue: SpringDale Community Cottage- 14 Princess St, Drysdale. Phone SpringDale on 5253 1960 for more details.

VOLUNTEER'S REQUIRED

Become an office volunteer at SpringDale Community Cottage. If you have a few hours to spare and enjoy working in a team environment, then please phone Rosie on: 5253 1960 to register your interest.

EDDIES

AT DRYSDALE

\$6.95

LADIES FIORUCCI TOPS
LONG SLEEVED WAFFLE FABRIC
NAVY AND WHITE

\$8.95

BOYS FASHION SHORT SLEEVE
SHIRTS, GREAT STYLES
AND COLOURS

\$9.95

GIRLS $\frac{3}{4}$ PANTS
2 GREAT STYLES

\$11.95

LADIES VEE NECK KLUE TOPS,
WITH COLLAR
RED, WHITE AND LIGHT BLUE

\$13.95

LADIES TRACK AND
FIELD PANTS.
TOP VALUE AND QUALITY

\$14.95

LARGE SIZED LADIES HOODED
ZIP THRU TOPS
BLACK ONLY SIZES 16-26

\$16.95

KIDS BLUES CLUES
DRESSING GOWNS
AND PJ SETS

\$19.00

LADIES QUALITY DRESS PANTS
GREAT FOR WORK OR PLAY

BRING IN FOR

\$10 off

NEW SEASON
RIPCURL BOARDIES

BRING IN FOR

10 % OFF

NEW
ROXY GEAR

BRING IN FOR

15 % OFF

ALL JEANS

BRING IN FOR

15 % OFF

NEW QUIKSILVER &
BILLABONG TEE'S

SHOP 6/12 HANCOCK STREET, DRYSDALE 5253 3088

Drysdale Ladies Probus Club Inc Reg No A0021357E

Our August meeting was once again enjoyable and informative. Despite the winter season we had a good attendance. Pat Smith was our 5 min Biographer, and as always, so interesting. We get to know our members through "their story". Guest speakers were:- Dorothy Graeme and Pauline from the Smith Family. The Smith family Organization started 15

years ago in Frankston. They started one in Kyneton (didn't work) then onto Gisbourne, Macedon Rangers and eventually Drysdale, which has been operating for 5 years. They meet at the Drysdale Hotel for lunch, 4th Thursday of the month. Wonderful work is done for children supporting their education, uniform's, shoes, etc. We don't realize how many fami-

lies are really struggling due to the economy and home pressures etc. It really opened our eyes. We then finished the day with a wonderful luncheon at Portarlington Golf Club - Fellowship excellent. Next month we have a fashion parade more about that later.

Hoo Roo for Now
Jeanette Derham.

Bellarine Open Gardens



Children from Clifton Springs Primary School enjoying one of the views available on the Bellarine Open Garden Day

Green thumbs will be out in force on the Bellarine Peninsula on Sunday November 4th, 10-00am - 4.30pm.

Among them will be children from Clifton Springs Primary School, helping with the third opening of Bellarine Open Gardens.

The day will give garden lovers the opportunity to spend time exploring these splendid gardens. Each with their own special character.

The gardens are beautifully landscaped with many landscaping features. They are lovingly cared for by their owners.

Refreshments are available on the day. Devonshire Teas, hot foods and drinks. A chance to win a water colour painting and garden ornaments.

Gardens will be open from 10.00 - 4.30pm. Entry for all gardens is \$10.00 and \$8.00 for pensioners or \$3.50 per garden.

Start at any garden:
"Woodgrove" 54 Woodlands Drive, Ocean Grove.

"Ambleside" 7484 Malpas Drive, Wallington.

Mrs Dawn Wades 80 Avila Road, Curlewis.

"Brambledale" 2115 Portarlington Road 3.6 Kilometres through main Drysdale roundabout on \Portarlington Road.

For more information ring 5251 3581 or 0427 098 495

INSTYLE BLINDS

QUALITY BLINDS AND CURTAINS
AFFORDABLE PRICES

OUTSIDE AWNINGS

(Free measure & Quotes Shop-at-home service)

- Venetian Blinds
- Vertical Blinds
- Pleated Blinds
- Holland Blinds
- Awnings
- Drapes
- Repair & Maintenance Service

48 Murradoc Road, Drysdale 3222.

Ph: 5251 1195

**DRYSDALE
KITCHENS**
CABINETS & JOINERY
PH: (03) 5253 2774
EST. 1986

*Your One Stop
Plumbing Shop*

Drysdale

Plumbtec

Bathroom Kitchen & Plumbing Supplies

PH: DRYSDALE 52531268 GEELONG 52221268
TANKS FOR DRINKING WATER & GARDENS

It's a busy catchment this Spring.

There is a lot happening in the Swan Bay Catchment this spring.

Spring is planting time! With funding from the Swan Bay Integrated Catchment Management Project Grants program, approximately 65,000 native trees, shrubs and grasses will be planted on waterways, around wetlands and to create wildlife corridors by private landholders. You'll see the tree guards if you drive along Murradoc, Queenscliff-Portarlinton or Banks's roads. Grants are now available to assist in fencing and revegetating waterways, drainage lines, remnant native vegetation and creating wildlife corridors.

Swan Bay Green Corps, a team of 10 young adults, 17 to 20 year olds, and a supervisor have been working in the catchment since June. They are assisting landholders

who have a catchment grant to undertake either planting or fencing.

They have already removed noxious and environmental weeds from 12 kilometres of significant roadside vegetation. Roadsides often contain the last surviving areas of native vegetation and have high conservation significance, especially when they contain the rare and endangered plant species.

Students at Bellarine Secondary College Drysdale campus, are breeding Gorse Spider-mites, a biological control for the noxious weed "Gorse". These Bio-agents will be released into local Gorse infestations and once bio-agents numbers are sufficient they will help to reduce the number of seeds these plants produce.

On Sunday 21st October, 2001 two nature walks exploring the vegetation in the Ocean Grove Nature

Reserve and significant native roadside vegetation along Knights Rd Manerium are planned. This is a great opportunity for anyone who would like to know more about our local native vegetation, how to identify local plant species and the local threats to native vegetation. Both walks will be lead by local naturalist and nurseryman Graeme Stockton.

One Sunday morning in November we will be running a farm sticky beak. Keep an eye on the Messenger!. It's a chance for property owners to have a good look at a local property designed and managed using whole farm planning and sustainable agricultural concepts to improve farm productivity, efficiency and sustainability.

There will be a Whole Farm Planning Course and a Master Tree Growers course early next year. Register your interest now. The farm sticky beak is a good introduction to Whole farm planning for those interested.

In November and December there will be a couple of community seed collection days run in conjunction with the Bellarine Landcare Group. You can participate in and learn about the collection of native indigenous seed for local revegetation projects. We are always looking for people interested in helping us collect seed and propagate local indigenous plants.

For further information or to register for an activity call Steve Smithyman, Swan Bay Catchment Officer on 0417 231 853.

Feeling Troubled?



Explore options - Find answers!

Counselling (Couples & Individuals)

*Confidential *Caring *Skilled *Professional

A changed life begins with one small step!

Phone: **5253 3060** Today!

(Fees negotiated according to Income)

Situated: 219-223 Jetty Road (Cnr. Cowies Rd.), Drysdale, Bellarine Peninsula, Vic. 3222

The

DRYSDALE PHYSIOTHERAPY & SPORTS INJURY CLINIC

Sports, Spinal, Manipulative Therapy, Arthritis, Workcover, TAC, Vet Affairs, Hydrotherapy, Exercise Rehabilitation & Myotherapy / Massage

Peter Terry Emily Turner Elise Riley

5251 - 2958

27-29 High St Drysdale

"Serving the community for over 20 years"

Open Mon - Fri 8am to 8pm, Sat 8am to 12 pm.



Come and visit our Trolley Dolly Cloth Doll Exhibition at the Old Mill at Portarlinton

Where: National Trust "Old Mill"
7 Turner Court Portarlinton

When: September 9th to October 7th

Open Wednesday, Saturday and Sunday
12-4pm (Entry Fees for Old Mill apply)

What's happened and what's happening at the CLIFTON SPRINGS GOLF CLUB

We have now commenced the course improvements program of replacing the current grasses on the front nine holes with a legend couch grass. All entry points have now been fenced off and signage erected to advise the public not to enter the front 9 holes and we seek the public's co operation to ensure this program is successful by obeying all signs.

The committee is in the process of finalising a decision on the extensions to the Members Bar and the refurbishment of the Bistro area and hopefully by the next edition of the Springdale I will be able to make an announcement.

The Morning Melodies held on Wednesday September 12th proved very popular with June Fraser providing the entertainment. The next morning melodies is to be held on Monday 29th October featuring the talented Jeana Davidson.

The "Buddy Holly Tribute Show" was an outstanding night with the show sold out 4 weeks prior. Due to it's success a return booking has been made for next year. The next big show will see a change of pace with the performance of "The Man of Many Faces", Comedian John Couzens appearing on Saturday October 20th. At only \$25 per person for a 2 course meal and show

bookings need to be placed early to secure your table.

With Christmas not that far away now is the time to book your Xmas function with the club available for lunch and Dinner Xmas functions. For menu options please contact Peter or Kate Crowley at the Club.

The new golfing membership season commences on October 1st and for the fantastic value of \$396.00 you can secure 12 months playing membership at the club with no joining fee applicable. Applications forms are available at the Club.

David Milne Manager

Toy Library



Springdale
Community Cottage
Bellarina Toy Library

As we approach the end of term three the weather will soon begin to improve and it will be time to start looking at outdoor fun instead of indoor activities. As well as a great range of toys and activities for indoors we have some terrific outdoor toys, toys that provide hours of fun and exercise, putting the gross motor skills to good use! Water play activities also add up to hours of fun for your children. If you are not already a member feel free to come along and see how we operate and how we can benefit your family. We are open every Saturday morning between 10.30 and 11.30 and every first and third Thursday afternoon between 4.00 and 5.00. Perhaps if you are having children for the holiday period who don't normally live with you it would be a good time to check us out! We are in the childcare room behind the Springdale Cottage in Princess St. Come along!

Kerry Dewar, co-ordinator.

**SOLICITOR
&
CONVEYANCING**

Basil Ristevski LL.B

5251 3453

Robert Tucker Piano Services
C/- Tuckerberry Hill.

Qualified Piano Tuner
and Member of Piano Tuners and
Technicians Guild of Australia.
Tuning, Regulation,
Restoration and Repairs.

Phone: 5253 3438

CARROLL'S WOODCRAFT SUPPLIES

66 Murradoc Road, Drysdale. 3222
Ph: 5251 3874 Fax: 5251 3864
E: mail; carrolls@pipeline.com.au

WOODEN FOLK ART SUPPLIES
WOODCRAFT SUPPLIES
WOODTURNING TUITION
MACHINERY & HAND TOOLS
SAW SHARPENING SERVICE
POWER TOOL REPAIRS
ONE OFF & PRODUCTION TURNING

St. James Ladies Guild

Invite you to the
**Geelong Welsh
Ladies Choir**

Saturday, 6th October
2001, 8 P.M.

St. James' Hall, Drysdale.
Tickets \$7.50 each.

Supper provided
Bookings/Enquiries:
ph. 5251-2672

Life line

Lifeline Shops have a wide range of all the following items

| | | |
|-------------|-----------------------|-------------|
| Furniture | High quality clothing | Formal wear |
| Toys | Books | Accessories |
| Jewellery | Shoes | |
| Kitchenware | Electrical | |

"Village Walk"
Shops 9 & 10, 21 Clifton Springs Rd.
Drysdale, Ph: 5253 2168

LIFELINE ALSO SELL INDUSTRIAL RAG
RING 5222 6418 FOR A PRICE

What's on at Clifton Springs Primary?

One of the highlights this term was a visit by the Life Education Van. The children in all levels enjoyed a session with teacher Gaye Slater, providing them with valuable information related to their study of the Human Body.

The level 1 and 2 children have all participated in very successful swimming programs at Splashdown with qualified instructors this term, and have developed a great deal more confidence in the water.

Level 3 children have been involved in Bike Ed this term and have enjoyed an excursion to Serendip Sanctuary where they had a chance to study bugs and minibeasts in their natural habitat.

The level 4 children have been extremely busy with activities such as debating, the National Maths Challenge, the Tournament of the Minds competition run by Deakin University, sports clinics, a visit by author Robert Trickey and a visit by the local brigade informing the children on Fire Safety.

We were also fortunate to have Robocup junior chairman Brian Thomas speak to a group of level 4 children and give them the opportunity to build and program their own 'robots' in September. The children thoroughly enjoyed this experience.

During this term another busy group of level 4 children, the Junior School Council, organised a very successful Footy Colours Day, raising funds for the Bone Marrow Institute. Everyone was invited to dress



Melissa Trewin marks the ball behind Ebony Bottrell, Bryce George, Geelong footballer Glen Kilpatrick, Joshua Mezzavia, Micky Shea and Matthew Pigot on Footy Colours day.

in footy colours, a special assembly was held in the gym at the start of the day and star Geelong footballer Glenn Kilpatrick joined us. A lunch-time football match between staff and students also provided plenty of entertainment.

Finally, plans are well under way for our annual BELLARINE OPEN GARDENS day to be held on Sunday November 4th. We have a wonderful selection of gardens again this year so please make a note in your diary of the date. This years gardens promise to be well worth seeing and will make a great day out.

Some of the reports written by the children about their experiences at Serendip Sanctuary.

At Serendip Sanctuary we went ponding. I scooped a duck egg

from the pond. On the way to the activity room the man put a leach on the microscope. It was cool. Steehl Reynolds 3MM

I caught a blood worm and focused it in a microscope. It looked really good. We went on a walk and talked about the food web. Then we went on another walk and looked at other animals. I had a fun day. Luke Humphries 3 RD

My favourite thing was the activity sheet. At Serendip there was a building in the shape of a bird. It was very interesting. Serendip is at the bottom of the You Yangs. Megan Dudgeon 3MA

 **Acacia Pest Control**
For all your environment and Household pest problems.

Bee and Wasp Removal.
Have your home treated For the control of:

- * Spiders * Ants * Rats * Mice
- * Earwigs * Cockroaches
- * Carpet Beetles * Silverfish
- * Clothes Moths * Fleas

Protect your family and greatest Investment from pests.
Up to 6 months warranty.

TERMITE CONTROL SPECIALISTS
Licenced to treat and inspect for all timber pests.

Your local pest control bloke.
Ph: (03) 5253 1714
Mobile: 0404 897 783 

Red Dolphin Carpet Cleaning



We offer only SENSATIONAL results, ALSO Lounge suites and windows cleaned

24HR FLOOD DAMAGE
5257 1161

DRYSDALE REMOVALS & STORAGE

Local, Country, N.S.W. & S.A.
PH. (03) 5251 3674

the rose gallery & cafe

Try our Wednesday and Thursday evening meal deal

"The Rose Gallery & Cafe"
Open: Wednesday to Friday: 11am till Late
Saturday: 10am till Late
Sunday: 10am till 5pm

Enjoy local wines and a great beer selection from our bar
16a High Street, Drysdale. Bookings **5253 3086**
Specially Cakes made to order and catering requirements also available on request. "Easy parking at the rear."

SPRING PLANTING IN CLIFTON SPRINGS

The star of Channel 7's Blue Heelers, John Wood, is urging residents of Clifton Springs and the surrounding areas to give up an hour or so of their time to ensure Melbourne along with City of Greater Geelong retains its status as one of the world's most liveable cities.

Put simply, he would like fellow Melburnians to plant tens of thousands of native trees, shrubs and grasses as part of Greening Australia Victoria's Spring Planting Festival.

This popular annual event has already seen more than a million indigenous trees planted in the greater Melbourne area over the past decade.

Mr Wood, who is patron of the Festival, says this year's theme is "living links", that is linking the city with the bush and linking people and places through community

plantings. He is urging people "not to handball responsibility for the environment to somebody else.

"It is up to each and every one of us to play our part at more than 200 planting sites throughout the greater Melbourne area, taking in Mornington Peninsula, Westernport and Geelong, along with 20 regional centres.

"This year's event also links the Festival to the Centenary of Federation celebrations, with the vision for the Federation of Australia being one of national unity and shared concerns.

"Indigenous trees, shrubs and grasses will be planted to provide community benefit for years to come and to ensure lasting value for future generations," Mr Wood says.

The Clifton Springs planting event will take place at Clifton Springs Foreshore - Fairy Dell Melways Ref. Map 238 E3, from 10am to 12noon 28th October 2001.

Powercor Australia, Victoria's largest electricity distributor and Spring Planting Festival official sponsor, and the City of Greater Geelong is urging locals to help plant 1,000 indigenous plants along the foreshore.

Last year's Festival saw participation rise to unprecedented levels, indicating that concern for the environment remains an important issue.

This year, individuals and families, community groups, service clubs, schools, local councils, government authorities, local businesses and corporate sponsors are again being urged to participate by giving up a few hours of their time to be "hands on with nature".

"People need to get out, enjoy the fresh air and exercise and make a positive contribution for the betterment of their local environment.

"The easiest thing in the world is to let someone else carry the can, to say there are enough people helping out already and we don't need to play our part, but that is a cop out. So dig deep and help out. Make your permanent mark on the quality of a local park, reserve or landscape," Mr Wood says.

Details of individual planting sites are posted and regularly updated on Greening Australia Victoria's web site www.vicnet.net.au/~gavic while information can also be obtained by phoning Greening Australia Victoria on 9450-5323.

Greening Australia Victoria is an independent, not-for-profit organisation, whose vision is for Australians to create a healthy, diverse and productive environment.

For further information or interviews, please contact Mr Damien Hoban at Greening Australia Victoria on 9450-5316.

Barwon Myotherapy

Specialised treatment of muscular pain.

Renee Lestrage

IRMA Registered Myotherapist

15 Collins St, Drysdale

Ph: 52512865

Treatment of headaches, neck & back pain and sports injuries.

Snap PRINTING

Serving Drysdale/Clifton Springs with quality products:

Digital Printing, B&W or Colour

Full Colour Brochures

Laminating

Business Cards

Graphic Design

Letterheads

Annual Reports

Invoice Books

Stickers

Envelopes

Invitations

Free Delivery

16 Bellerine Street Geelong 3220

Tel: (03) 5223 3600 Fax: (03) 5224 1112

email: geelong@snapprinting.com.au

Website: www.geelong.snapprinting.com.au

Don't Stress We'll Sort Out Your Mess!



PH: 1800 645 545

Management Reports • Payroll Service • Budgeting
M.Y.O.B. Installation & Training • GST Compliance
Money Back Guarantee • Free Initial Consultation

DRYSDALE CHRISTAIN FELLOWSHIP

I don't know what you think about it, but to me it seems strange that we receive very little training or direction for two of the most significant responsibilities of our life.

If we want to drive a car regularly, we are required to have driving lessons and pass a test. If we can't pass the test, then we are not permitted to drive. If we want to be a Teacher, a Chef, a Mechanic, a doctor, or many other professions, we need to train for a number of years and pass a test. If we want to be a Pilot, not only do we have to train and pass a test, we also have to take part in regular skills update courses and prove we are still able to do what we have been trained to do.

Yet, when it comes to parenting and marriage, we require no training at all. It may be argued that many people's lives depend on the ability of Teachers, Doctors, Pilots, even Mechanics, and as such they should be trained and licensed. Yet, as a parent or marriage partner, I profoundly influence the life and lives of other people.

When we consider the current success and failure rate of marriages, we can see good reason for better preparation and understanding before people get married. Simply living together doesn't solve the problem either, it simply makes the statistics look better than they really are.

Two of the greatest responsibilities we have are learned by observation and if we are observing something that has its own problems then we are likely to repeat what we see. If we want our marriages to have a greater chance of success, and our children have a good model to observe, we need to take some time to learn what marriage means. Learning about marriage is a constant process because, as people, we are constantly changing. Our attitudes, our thoughts, our values, the world we live in change and we need to allow for those changes.

Therefore, we need to work at making our marriages work, and that needs to be an ongoing program. When ever we can, we need to learn and observe what successful people are doing right. We also need to go back to basics. The beginning of marriage is described in the Bible and it has a lot more to say about marriage and relationships than most people think. God designed marriage for our benefit and enjoyment, it would be good to learn and understand the context He designed it in.

If you love your husband, if you love your wife, if you want to prepare your children well for their marriages, take time to be better equipped, and be prepared to work at it.

PS. Jake Hogendoorn Drysdale Christian Fellowship

Service Times:

Sunday Morning: 10.00 a.m.
Kids Church: 10.30 a.m.
Toddler Church: 11.00 a.m.

Sunday Evening: 6.30 p.m.

Cell groups operating in homes mid-week. For more details on any of our activities, please contact our church office Monday - Thursday. (We have a FREE BUS available to transport children to and from Kids Church each Sunday morning. For details please phone 5253 3218)

"FOR BETTER OR FOR BETTER" A MARRIAGE SEMINAR

A Seminar for those who feel that their marriage is important. Coming to this Seminar is not admitting your marriage has a problem, it is showing your commitment to making it work. Our aim is to provide you with the tools for a better marriage. 7.30 pm, Friday November 2nd & 10.00 am - 4.00 pm Saturday November 3rd

At Drysdale Christian Fellowship 276 - 290 Jetty Road, Drysdale

Inquiries to the Office or phone 5253 2241

★★★★★ Attractive Returns

5.50%

Dennis Blake



Key Features

- Established for 15 years
- Attractive returns pay monthly
- Direct banking of income and withdrawals
- Withdrawals with as little as 24 hours notice
- Telephone redemption facility
- No front end fees
- Low or nil exit Fee
- All first mortgage security
- Average loan ratio security 60%
- Minimum investment is \$1,000

Please send me details of your services and a copy of the current prospectus

Name: _____

Address: _____

Postcode: _____

Ph: _____

Applications for investment must be on a form attached to a current prospectus. Australian Pensioner Advisory Services P/L ABN 16 007 427 974
Holder of dealers licence number 88176.
Visit our Website: www.apas.com.au



Australian Pensioner Advisory Services Pty Ltd

"Helping Australians invest wisely"

PH 5229 4903
59 Fitzroy Street, Geelong



Bellarine Hearing Services

Audiologists & Hearing Aid practitioners

- Professional hearing assessment
- OHS accredited provider For eligible pensioners
- Quality hearing aids

PH 5229 6407

* NOW AT DRYSDALE EVERY TUESDAY

CONCEPT CAMPERS

Manufacturers and repairers of Annexes, Awnings, Tonneaus, Tarps, Horse Rugs, Boat Covers Custom Built Camper Trailers Caravan and Boat Storage Discount for senior citizens

Phone (03) 5253 2569
61-63 Murradoc Rd. Drysdale.

AMBULANCE MEMBERSHIP TO INCREASE

The cost of Ambulance Service Victoria membership is about to increase, for the first time in eight years.

Rural ambulance Victoria Business Development Manager Mike McCrabb said the current membership charges of \$35 per single and \$70 per family had been in existence since 1993.

"Since Rural ambulance Victoria was formed in March 1999 the number of Paramedics and MICA Paramedics serving rural Victoria has increased by 65 and there are now an additional 20 ambulances on the road."

"There have also been other increases in the level of service provided to the community with the introduction of Advanced Life Support (ALS) training and the provision of

a helicopter air ambulance based at Bendigo."

Mr. McCrabb said from 1 September, Ambulance Service Victoria membership would increase to \$80 for a family and \$40 for a single person.

"Anyone who signs up before 1 September will be able to join at the existing rate," said Mr. McCrabb.

He said Ambulance Service Membership provided emergency care and transport as well as non-emergency service and access to specialist services such as the air ambulance, new born emergency transport, and the mobile intensive care paramedic service.

"One of the benefits of being a member of the Ambulance Service is that any medically necessary trip anywhere in Australia is free."

"Ambulance fees for those who are not members or entitled to free services can be expensive and the cost of an emergency ride in an ambulance from rural Victoria to a Melbourne based hospital can average \$3,700."

"Ambulance Service Victoria membership also funds about 19% of Rural Ambulance Victoria's annual budget."

"For only \$40 per year for singles and \$80 per year for families, An ambulance Service Victoria Membership provides all emergency and non-emergency ambulance care, 324 hours a day.

"Phone 1800 64 84 84 to ask about ambulance membership and entitlements."

The Drysdale Bowling & Croquet Club Inc.

Invite all Bowlers to their Morning Coffee and Bowls Fashions Presented by "JARMANS" of Geelong.

Date:- Monday 29th 'October '01 Time:- 10.30 pm Cost:- \$3.00 pp Venue:- Club Rooms

All most welcome

Further Enquires Peg. 52512452 Eva. 52513421

Mrs R. Harrison 172 Princess St Drysdale 3222 Ph: 52513134

Thinking of selling your property?
Well we have buyers waiting

The current real estate market is strong and we have genuine unsuited buyers on our books wanting to buy property urgently. If you are thinking of selling, please call us to see if your property suits.

We guarantee you: **Ethical, professional and personal attention.**
Honest, genuine advice.
The most experienced Agent in town.
A genuine sale valuation.
The best possible price with the least fuss.

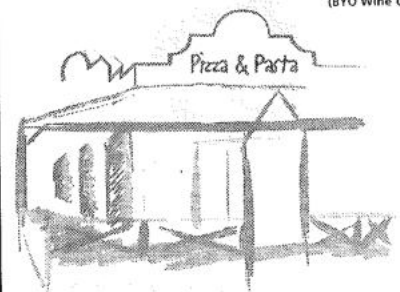


Bayshore FIRST NATIONAL
REAL ESTATE

26 High Street, Drysdale. Telephone 5251 2610

Drysdale Village
**Pizza
Pasta**
Restaurant

Fully Licensed
(BYO Wine Only)



Telephone 5251 3937

Inquire within for our latest Delivery Specials
Open 7 Days A Week
Dine-In • Take-away • Home Delivery
Shop 7/26 High Street Drysdale

Home Deliveries to
Drysdale • Clifton Springs • St Leonards • Portarlington • Leopold

Ladies' Probus Club Of Bellarine Inc. Reg. No. A14696T.

At the August meeting Margaret told us that she was to travel overseas again very soon with her husband. They are going to see some things in London, visit a Theatre then off to Cairo via Spain, Morocco and Portugal. Then they board a boat in Luxor and travel along the Nile to the Valley of the Kings and the Aswan Dam, then back to Cairo to visit the Pyramids, Sphinx, Old Cairo and Museum.

We wish we could all go, to take photo's, to carry bags, and assist in anyway just for the ride! Hope it reaches their expectations and they return with many stories to tell. We all wish the two travel companions a happy holiday and many laughs with Margaret and Peter.

Nan Almond is off on another trip, and will no doubt have us in stitches when she gives us a talk on her latest experience. Nan goes to places on the cheap, and sees the most wonderful places.

A Photograph of The New Club Banner sewn by Sylvia Grey, has been greatly admired is being sent to the Probian Newspaper, to put Bellarine Ladies Probus Club on the map.

The Speaker at the August Meeting was Matthew Brown from Spray Farm. He gave us a good description of the homestead and gardens built in 1851, and restored to it's original state by the Scotchmans Hill Group. Situated on the Bellarine Peninsula with expansive water frontage, the property boasts spectacular views of the You Yangs, Port Phillip Bay and the City of Melbourne.

Since 1995 Spray Farm has hosted an annual outdoor concert

series of international acclaim. The premium wine from 300 acres of vines planted in a cool Maritime Climate is proof that they are now doing the right thing. It was a humorous talk, and an invitation to visit the Old House was extended providing we go through the admin office to make a group booking. Spray Farm is also open for Lunch on Saturdays and Sundays 12pm- 3pm. September's speaker will be Don Horsburgh, he will tell us all about the wonderful old Steam Train that runs through the Dandenong's, "Puffing Billy." That should be fun.

The card makers received a Special Tribute from the committee for the hundreds of cards produced by them for members birthdays, get well, thinking of you and anniversary occasions. A great job done by all, in styles using whatever artistic talent they have. (Some belong to the Embroiderers Guild)

The next trip "Singing in the Rain" on November 7th and 14th is still on. Unfortunately not all trips can be filled these days so often have to be cancelled. Lunch in September will be at the Springs. All for now. Enjoy the Spring Flowers. Iris Liz Tolton.

Clifton Springs Garden Club Inc Reg No A0008615H


PRESENT

THE Clifton Springs & Drysdale GARDEN SHOW

on Saturday 27th October
2001 at the DRYSDALE
UNITING CHURCH
HALL

OPEN 11 a.m. TO 4.30
p.m. Afternoon Teas Plant
and Cake Stalls

For further Information and
Show Schedules contact the
Show Manager, Clifton
Springs Garden Show,
P.O.Box 233 Drysdale
3222. Phone. 52513481 Or
5253 2013. 5251 2693.



**MORTIMER
PETROLEUM**

**PETROL STATION &
CONVENIENCE STORE**
97 High Street Drysdale Phone 5251 2603
Petrol, Autogas Bait & Fishing Supplies

CAR WASH

Open 6.00am-10.00pm



Lynette's
User-Friendly
Computers

Personalised
Tuition & Training
Ph: 5259-3963
Serving the Bellarine Peninsula



Drips Plumbing
Peter Izzard
Licence No. 22892.

Dingo Contractor

- Trenching 150mm – 300mm wide
- Post hole drilling 200mm – 600mm wide
- Rippers, Rotary Hoe. • Earth Moving.

SMALL, VERSATILE AND VERY POWERFUL
Ph: 5251 1545 Mobile: 0419 103 615

PORT MOWERS

REPAIRS, SERVICING & PARTS
FOR ALL MOWERS,
CHAINSAWS, BRUSHCUTTERS ETC.



MOWERS FOR SALE
(New & Used)
Free Pickup & Delivery
44 GEELONG ROAD.
PH: NEAL WHELAN
5259 2510

SCRAPBOOKING

Where are your precious photo's?
Learn how to preserve them in a
Safe, creative scrapbook photo album.
Beginner Classes, Home Classes
And on-going workshops available.
For all your photo safe supplies.
Cutting systems and advice
PHONE DEBBIE ON: 5251 3361

Bellarine Agricultural Show

Report by Portie Co-Ordinator Bellarine Agricultural Show

The famous "Marmaduke" will be at the Bellarine Agricultural Show on Saturday 10th March 2002.

Marmaduke now known as "Duke" or sometimes called the "old brown dog" will be at the show provided health permits. "Duke" is now into his fifteenth year, ninety years of age in human terms but still with that sharp eye, and that alert look. Legend has it that this amazing dog had a short term of employment with the Carribean Customs Service, during that term of service this deed stamped him as a hero. I believe the story unfolded along these lines. The

good ship Juan Sebastian Elcano the Third was due to sail from the port of Kingston in April 1993, when Customs authorities had a tip off that a large consignment of cocaine was secreted on board. An organised operation was undertaken, boiler, engine rooms and every cabin in the ship was carefully searched and nothing was found. "Duke" came on board with a sense of smell 100 times more sensitive than a human, the great dog soon found the cocaine hidden in the hollowed out toilet sets of every cabin. The Caribbean Customs regard him as having hero status. He will be at the Bellarine Show on Sunday 10th March 2002 at Portarlington, he is now in total retirement but the keen eye and the

intelligent head makes him a stand out.

The Powercor helicopter based in Melbourne will come to Portarlington on show day, it is equipped for emergency medical procedures and is powered by two jet engines. It is used to service country areas where speed can save lives, the costs of running this flying life saver is funded by major sponsor Powercor Australia, with generous support from AMP, Toyota, and Motorola. Many local communities are now assisting with the funding of this most deserving service, and it will be on display at The Bellarine Show.

In the coming months details of all the show events, arts and crafts, home industries, the entertainment program, the market stalls, and the catering arrangements will unfold.

It is pleasing to acknowledge the recent new members who are now enjoying Bellarine Agricultural Society membership, but there is room for many more. Donations to help the disabled and disadvantaged to attend the show are most deserving of consideration.

Full membership which includes admittance to the show for 2 adults and 3 children \$12, Life Membership \$150. Cheques to The Bellarine Show PO Box 315 Drysdale 3222 Sec. Ph 5251 1237

SpringDale Three Year Old Kindergarten

We are now taking enrolments for 2002. SpringDale offers one two hour session per week on Thursday mornings from 9.30 - 11.30. Fees are \$100.00 per term and materials fee.

We offer a stimulating program where activities are age-appropriate and meet the individual developmental needs of each child. During their time in the Kindergarten program your child will learn valuable skills, learn to work and play co-operatively with other children, develop more complex relationships with other children and adults. Most importantly they will enjoy themselves and be ready to take part in 4 year old programs.

If you are interested in this program please contact us or drop in to meet our staff and look at our facilities.

Contact us on 5153 1960


BELLARINE FENCING Co

For all your fencing & gate needs,
- Picket - Paling -
Heritage Wire.

Phone: Andrew & Gayle Baylis
on 5251 3090 or 0417 544 887

Do you need a housing loan?

Please contact Bellarine Peninsula Community Bank™ Branch at Portarlington, or phone 5259 3266

Bellarine Peninsula Community Bank Branch  Bendigo Bank

www.bendigobank.com.au Bendigo Bank Ltd, Fountain Court, Bendigo VIC 3550 ABN 11068049178 MG125 (02/02/01)



Drysdale Motors

FOR ALL AUTOMOTIVE TUNING AND SERVICING

Specialising in
LPG DYNO TUNING

Have your LPG vehicle Tuned on a "rolling road". If your car runs on LPG And hasn't been dyno tuned Then it hasn't been tuned.

- Roadworthy Testing
- Fuel Injector Cleaning
- Air Conditioner Servicing
- LPG Conversions
- New Car Servicing

44 Murradoc Rd, Drysdale, 3222.
PHONE: (03) 5253 1033.

The SpringDale Messenger



DRYSDALE COMMUNITY CRAFTS

18-20 High Street, Drysdale

"Spring Special"

10% Discount
on all goods purchased

between
1st September and 14th September
2001

on presentation of this
Voucher

SPORTS REPORT

Drysdale Cricket Club is on the 'web'!

Keen to follow on from the fantastic seasons enjoyed by both the Drysdale Football and Netball Clubs, the Drysdale Cricket Club has been training hard in the pre-season. With the season opener on the first Saturday in October, all prospective players are encouraged to come along to training at 5pm on Tuesdays and Thursdays (seniors) or Mondays and Wednesdays (juniors) and join in the fun. If you would like more information on joining the club as either a player or social member, simply call Frank (52513451) or Adam (52532975). The club is making a big effort this year to ensure that our rooms are as comfortable and welcoming as possible for the whole community. Grovesy and Jesse have been busy making improvements to the interior and we have adopted a new smoke-free policy. Additionally, the club is also preparing to undertake the Australian Drug Foundation's 'Good Sports' Program. This program will ensure that our club promotes a healthy environment for all club members in response to drugs and the responsible serving of alcohol. For those of you who are technologically minded, don't forget to check out the Club's new website at www.draftedit.com.au/dcc.htm. This site will be constantly up-dated with all the information you'll need including membership fees, dress codes, contact numbers, special functions, etc. so stay tuned! Until next time - The DCC.

BELLARINE TABLE TENNIS CLUB

123, The Avenue, Ocean Grove P.O.Box 652, Ocean Grove 3226

President: Mr. P.Brown Ph.52554345 Secretary: Mrs. T.Pape Ph.52551641
Treasurer: Mr.Geoff Evans Ph.52561643

Table Tennis each week on TUESDAY, 8PM. - 10PM. COACHING FOR JUNIORS (year 6,7,8,9) \$10.- for five weeks one hour sessions Starting Monday, 8 October at 7.30pm. COACHING FOR SENIORS \$15.- for five weeks one hour sessions Starting Monday, 8 October at 8.30pm. SCHOOL HOLIDAYS ACTIVITIES FOR JUNIORS Thursday, 27 September 2pm.-4pm. Thursday, 4 October 2pm.-4pm. \$3.- per session For further information contact Geoff or Therese.

SOFTBALL...What a great game.

Would you like to play? Then contact the Ocean Grove Softball Club. Female and Male of all ages and levels catered for under the guidance of Accredited Coaches. Simply contact one of the following people for more information.

KERRI WARD * Hme 52552274 or

Email: kaw_43@hotmail.com

CHRIS MC MANUS * Hme 52561035 or Wrk 52262537

'ROMANCING THE PAST'

(NEW AND PRE-LOVED GOODS)

- * AROMATHERAPY
- * GREETING CARDS
- * BRIC A BRAC
- * HABERDASHERY
- * BOOKS/CRAFT
- * JEWELLERY
- * COLLECTABLES
- * KIDS KORNER
- * FURNITURE
- * PLANTS Etc.

OPEN:TUE - FRI 10-5p.m.,SAT 10-3p.m.
SHOP 3/24 DOROTHY STREET, LEOPOLD
(OFF CHRISTIES RD) Phone: 5250 1613
NOTE: OPEN FATHERS DAYS! 10-3p.m.

Frank Burge Cars

KEITH PURCELL
or
DAVID GALLOP

Phone: 5222 1606

Fax: 52218608

Mobile: 0418 554 011

172 Fyans Street,
South Geelong 3220.

BELLARINE CHRISTIAN BOOKS and RESOURCES



- Cards
- Books
- Bibles
- Gifts
- CD's, tapes, videos
- Non-alcoholic wines

Shop 1, 8 High Street, Drysdale.
Ph: (03) 5251 3491 Fax: (03) 5251 3495

BELLARINE AUTO SERVICES

Quality Mechanical Repairs
Tuning - Servicing
LPG Conversion - EFI
Tyres - Batteries - RWC
Licensed Vehicle Testers

Mortimer St. Drysdale
Proprietor: J. Pamplin

Ph. 5253 1644

CARPET STEAM CLEANING

MARICK CARPET CLEANING

DICK BOLAND

Ph 5259 2217

Mobile 0412 517 065

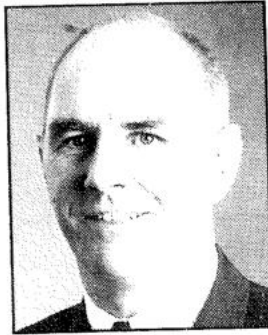
Carpets, Lounge Suites

Car Upholstery Stain Guard Available

FREE QUOTES



The Professionals



**Phil
Cumming**
AH 5251 3047
0408 599 232



**Gabrielle
Beams**
AH 5253 2848
0412 430 976



**Heather
Blair**
OFFICE 5251 2847
0417 142 516

HEALTHY DEBT GROWS WEALTH

Most home owners are so focused on the race to pay off their home loan that they overlook the advantages of staying in debt.

In placing all types of debt in the "avoid at all costs" category people throw the baby out with the bath water.

Used wisely, debt is a wealth producing mechanism. For example most people would not be able to buy their own home without borrowing the bulk of its value and buying at today's price rather than saving the total cost and buying at tomorrow's price. The fact that property prices pull ahead faster than consumers can save is, of course, one of the main reasons people buy property in the first place.

Debt falls into two basic categories- healthy and unhealthy.

Many people get into unhealthy debt at an early age to buy consumer items that either disappear or devalue over time, and debt has become synonymous with poverty rather than wealth. Yet most people who are wealthy would testify that with judicious use of "healthy" debt or borrowings they have actually increased the buying power of their income over time.

Even people who borrowed to buy their first home are sometimes reluctant to remortgage themselves to buy more property for investment. Yet borrowing on their equity is precisely the way to start building wealth.

A home owner's debt, or more particularly their debt to equity ratio is a matter of perspective. For example take a property currently valued at around \$180,000 with

\$30,000 left on the loan. Some people see it as \$30,000 owing, whereas others see it as \$ 150,000 borrowing or investment power.

The important thing is to get good financial advice and ensure that mortgage borrowings are structured correctly.

People should approach their accountant or financial planner to find out details of negative/positive gearing and the factors influencing the rate at which they can add to their property portfolio.

However the first step is a paradigm shift - the ability to see debt as a positive tool for growth rather than a negative state of moral and financial decline.

Guyett Real Estate P/L

11 Clifton Springs Road, Drysdale

5251 2847