

The SpringDale Messenger

Your Free
Community
Newspaper

Compiled and published by the SpringDale Neighbourhood Centre Inc A002916V

Circulation 3,700

ABN 21 404 220 267

Vol 12 No.3, April 2002

AND THE WINNER IS.....



- Adrian's children - participate in the evening and present the awards to the nominees and to our ultimate winner of the award. All who attended the evening felt that it was a fitting tribute to Adrian and to the people who have given so much to our community.

You will remember that in the February edition of the Messenger we published the list of nominees:

Anne Brackley
Aaron John Cooper
Bernard Filbay
Lorraine Hall
Robert Hutchinson
Patricia

Myers
John Rule
Pearl Webster

All were worthy of nomination and all deserved to win this award. Alas there can only be one winner.

Bernard Filbay

Bernard was a popular winner and his more than 47 years of involvement in this community deserved recognition. Bernard has

been a volunteer with the Drysdale Fire Brigade for 47 years including 14 as Captain and 4 years as an Executive Member of the Victorian Urban Fire Brigades Association. Bernard has 40 years continuing service commencing with the previous Drysdale Bush Nursing Centre and currently as President of the Drysdale Community Health Centre Local Advisory Committee. He has been a member of the Board and Treasurer of the Bellarine Peninsula Community Health Service since it was formed in 1992. Bernard is also an active member of the Drysdale/Clifton Springs Community Association and as a member of the Clifton Springs Foreshore Advisory Committee has been a key figure in the "Dell" redevelopment project. Bernard is a foundation member of the Rotary Club of Drysdale and has assisted with numerous community projects undertaken by the Club.

An impressive contribution to this community.

Congratulations to Bernard for winning this award and thank you again for continuing to give your time and talents to the betterment of our community.

....Bernard Filbay

The Inaugural Adrian E Mannix Community Service Award Dinner was held on the 26th of February, 2002.

It was a fantastic evening with over 120 people attending to acknowledge the exceptional community work of the nominees. The evening was organised by the Rotary Club, Lions Club and Springdale Neighbourhood Centre. We were privileged to have Michelle and John



**DRYSDALE
VILLAGE
HARDWARE**
(03) 5251 3267

YOUR HANDY
HARDWARE
STORE

THE ARCADE
HIGH STREET
DRYSDALE, 3222.



Bank of Melbourne 

**SHOP 9
SUPERMARKET
COMPLEX
DRYSDALE**

The SpringDale Messenger

The SpringDale Messenger is compiled by the SpringDale Neighbourhood Centre Inc. A0024916V, 14 Princess St. Drysdale. Postal: P.O. Box 80, Drysdale, 3222.

Editorial and Enquiries:

PH: 5253 1960. FAX: 5253 3050

To improve the administrative arrangements for the Messenger we are encouraging all contributors to provide their information on disk (Word) or email it to us – ATT Rosie on: sprdalecc@primus.com.au. For those who have difficulty providing your contributions on disk we are still happy to accept written copy or make our computers available for your use.

Next Publication:

Copy deadline:

6th May, 2002

Distribution:

24th May, 2002.

Views expressed in this newsletter are not necessarily the views of the Publisher, the SpringDale Neighbourhood Centre Inc.

Advertising:

To ensure publication in a specific issue, copy must be submitted prior to deadline.

This includes both new adverts and alterations to an existing advert. Layout and Design of this issue by Pagation Design Services, Geelong. For any queries about advertising, please contact Anthony Zavaglia at Pagation Design Services.

Ph: (03) 5223 2494

Fax: (03) 5221 8063

email: smd@pagination.com.au

BUILDER

HIA MEMBER **Paul Jones** *Registered B.P.B.*

Ph. 52 513934

NEW HOMES ~ EXTENSIONS ~ AIR CONDITIONING

Mobile 0419 354259

Contents

AND THE WINNER IS

....Bernard Filbay 1

A quick thank-you 2

NEWS FROM SPRINGDALE

NEIGHBOURHOOD CENTRE 3

Bellarine Human Services Forum 3

Childcare Session 3

Other Ideas 3

TRAVELTALK by Carol McCarthy ... 4

Reflexology - a window to the body... 5

DRYSDALE LADIES PROBUS

CLUB INC. 5

Bellarine Historical Society -

Preserving the History of the

Bellarine Peninsula 6

THREE YEAR OLDS WANTED! 6

We did it again !!!! 7

Drysdale Senior Citizens Club. 7

YOUR LOCAL REPRESENTATIVES . 8

“SPRYlines” Garry Spry

MP Member for Bellarine 8

Elaine Carbines MLC 9

CATHOLIC REGIONAL

COLLEGE FUNDING BOOST 9

BELLARINE SHOW 9

CLIFTON SPRINGS FORESHORE

PARLIAMENTARY SECRETARY

FOR EDUCATION AND TRAINING ... 9

Ladies Probus Club of Bellarine Inc.

Reg. No. A14696T. 11

What's happened and what's happening at the CLIFTON SPRINGS

GOLF CLUB 11

Is fear holding you back? 12

Drysdale Senior and Ranger Guides . 13

BELLYRINE BELLES 13

THE SPRINGDALE COMMUNITY

HOUSE BELLYDANCE TROUPE 13

Have a look at our new plans for

SpringDale 14

In Your Garden 15

What's on at Clifton Springs

Primary School 16

Clifton Springs Pre-School 17

Volunteers reviving

Swan Bay wetland 17

Investment advice you can

COUNT on! 18

SPORTS REPORT 19

HAWKS CRICKET VICTORY 19

Concentrating on Croquet 19

SPORTS REPORT 19

The Investors Big Three 20

A quick thank-you

Fourteen months ago after a short illness my dear husband Peter died from cancer leaving me heartbroken. I have had wonderful support from my family in Melbourne, friends and neighbours, however I would like to say a special thank you to three neighbours in particular. Beth and John Winter who inspire and encourage me in the garden and Ron Dear who walks my beautiful

labrador Sam five days a week and has been a shoulder to cry on many times, plus lots of laughs as well. These great neighbours have become my friends and I would like them to know how much they lift my spirit with their continuing kindness.

Forever grateful *Carol Frede*

Kerry's
Nail Elegance

•ACRYLIC •POWDER GEL
•ORGANIC GEL

Competitive prices.
Friendly environment.
By appointment only.

Ph: 5253 3107

Just a short drive from Drysdale shops.
Amarina Rd Clifton Springs. Melways map ref 238 E.7.

C
L
O
S
E
D

T
U
E
S
D
A
Y

Therapeutic Massage
Geelong Tactile Therapy

Specialising in Sports Massage
Relaxation and Stress Management
By Qualified Masseur

Les O'Keefe, M.S.T.T
Phone 0411 094 242

The year is speeding by again. School holidays are upon us again and we are looking forward to our term 2 activities.

On page 14 of this Messenger we have published the plans for the redevelopment of Springdale Neighbourhood Centre and the Drysdale Community Hall. This is your opportunity to look over the plans and provide any feedback.

I am sure you will agree that on completion of this project Drysdale and Clifton Springs will have a fantastic community facility with plenty of opportunity for residents and community groups to utilise it.

In addition to the redevelopment the City of Greater Geelong are currently looking at funding for the upgrade of the attached car park.

If you have any suggestions or comments please forward them on to me or phone me at Springdale.

Term 2 - Community Education Programs

After the success of Term 1 we have developed our Term 2 program (see middle pages) and have added additional classes to accommodate demand from the community.

You will note that we now have additional Yoga classes for all those who missed out in Term 1. Please contact us as early as possible as these places will fill quickly.

Some of our new classes this term include: * Positive Thinking and Meditation * The Art of Letting Go * Men after Separation and Divorce * Learning to play the Guitar * Bunka Punch Embroidery * Food Handling and Safety Certificate

DRYSDALE REMOVALS & STORAGE

Local, Country,
N.S.W. & S.A.
PH. (03) 5251 3674

We still have our other favorites including the full range of computer classes, First Aid, Tai Chi and Water Colors. A reminder that we now take credit card payments on site or over the phone so you can book and pay without leaving your home.

Why don't you make this the term you do something for yourself?

Bellarine Human Services Forum

As I mentioned in the last Messenger a number of organizations including Springdale, local schools and service clubs have formed a working partnership to identify ways we can work together to improve services and infrastructure for Bellarine residents. At our last meeting in March we developed and supported a funding proposal to the State Government to focus on the needs and issues facing young people. The submission seeks funding to undertake a project to work with young people, families and schools to identify ways we can meet the needs of our youth population. If you are interested in this project or more information about the Forum please contact me.

Childcare Session

In Term 2 we will be trialing an afternoon childcare session. This session will be held on Friday afternoons from 1pm to 4pm. This gives you an opportunity to pick up any school children before collecting your child from our center. If you are interested in this session please contact our office and put your

CARPET STEAM CLEANING

MARICK CARPET CLEANING
DICK BOLAND
Ph 5259 2217
Mobile 0412 517 065
Carpets, Lounge Suites
Car Upholstery Stain Guard Available
FREE QUOTES

name down. We do have some permanent positions available.

Sports Page

We are in the process of introducing a sports page/s in the Messenger. We have a young eager journalist to be - Brent Diamond - who will coordinate this page. If your sporting group would like to provide regular information please contact the office and we will organize for you to be included in this page.

Other Ideas

If you have suggestions for classes or ideas for the Messenger please do not hesitate to contact us with these ideas. Where we can we are committed to taking on board your ideas.

The staff and volunteers wish you and your family a happy and safe Easter and look forward to seeing you all in Term 2.

Lisa Neville

Contact Details 14-16 Princess Street,
Drysdale
Ph: 52531960 Fax: 52533050
Email: sprdalecc@primus.com.au

SpringDales Facilities

INTERNET COSTS

\$2.50 per Hour, 10 cents per page printed

PERSONAL USE OF COMPUTER

FREE, 10 cents per page printed

PHOTOCOPIES

15 cents per copy

FAX MACHINE

Local rate - *50 cents for the 1st page
*10 cents per page sent after the 1st

STD rate - *\$1 for the 1st page,
*20 cents per page sent after the 1st

TRAVELTALK by Carol McCarthy

What a busy month we've had. Annie jetted off to New Zealand for a few days to discover the breathtakingly beautiful south. Southland, NZ's southernmost province, offers unsurpassed scenic beauty within a wildly contrasting landscape. Annie explored off the beaten track adventures such as a trip to Stewart Island, NZ's newest National Park, jetboated down the steepest white water river in Fiordland National Park, explored the Catlins, with an abundance of wildlife, rugged coastline and 160 million year old fossilized forest. While there Annie enjoyed the famous Bluff oysters and a variety of

local seafood in one of the many quality restaurants.

Then after a few days back, Annie headed off again on the beautiful P & O Pacific Sky to some of the loveliest islands on the planet to celebrate Easter under tropical sunshine. After 10 nights relaxing on deck, swimming, giving yoga a go, snorkeling, exploring tropical islands and the sampling the delicious meals prepared by the ship's master chefs Annie's back.

Carol spent the labour day long weekend in China. In 2 days she saw some of Beijing's remarkable attractions. The Great wall, Tiananmen Square, the Forbidden City, the Temple of Heaven and the Summer Palace with its magnificent Chinese classical gardens. What an amazing place, 30 million people all living in one city, fantastic food and some of the best shopping in the world.

Nicole traveled on a whirlwind Insight tour of Europe. Starting in London, Nicole travelled by ferry to

Calais and drove through the WWI battlefields to Paris. While in Paris she spent an evening at the famous Moulin Rouge, climbed the Eiffel Tower and walked along the Champs Elysees to the Arc de Triomphe. Then on to Switzerland to the beautiful city of Lucerne and an excursion up Mount Pilatus by cogwheel railway.

Should you be thinking of travelling to UK, Europe or North America this year come along to our information evening on the 24th of April. Nicole will be there with her updated European travel tips along with a representative from Globus/Cosmos.

Should you like more information on any of our travels or wish to come to info night give us a call on 52511125.

Till next month
Carol McCarthy

School Tutoring

General help
Specific subjects inc Biology,
Maths, Health, English
Qualified, experienced teacher

Get on top of things now
Phone Janet Campbell on 5259 3077

LONDON

FLY FROM
\$1919*

When you spend \$150* on your choice of UK or Europe accommodation, car hire or sightseeing.
Look at this fantastic option.

LONDON

- 3 nights accommodation
- Continental breakfast daily
- Big Bus sightseeing tour
- 4 day London Travelcard
- River Thames Circular Cruise
- A flight on the British Airways London Eye

3 NIGHTS
FROM
\$387
EXTRA FROM
NIGHTS **\$84***

UPGRADE TO WORLD TRAVELLER PLUS

FLYING BRITISH AIRWAYS FROM \$600*

- Stretch out in comfort with 20% more space
- Adjustable headrest, footrest and lumbar support
- Separate cabin with only 5 rows
- Seats with personal video screen

HARVEY WORLD TRAVEL BONUSES

FREE FREE Harrod's shopping voucher (GBP25) for the first 100 adults to book and pay deposit by 12 Apr 02

FREE FREE Sidetrip to a choice of 25 destinations in UK and Europe

FREE FREE copy of 'An Australian's Britain & Ireland' Guide

EARN BONUS REWARD POINTS
Gelstra Vis card

BRITISH AIRWAYS
HOLIDAYS



HARVEY
world travel
The Travel Professionals

Ph: 5251 1125
6 High Street, Drysdale

Reflexology - a window to the body

Walk in, sit down, take your shoes off and relax. You may feel little sore spots as your feet get worked on, but there is no need to worry, it could just be your adrenal glands or perhaps your kidneys! It may not make sense at first but reflexology doesn't necessarily have to be black and white to be beneficial to you and your body.

There are approximately 7200 nerve endings in the feet coming from all areas of the body. This explains why reflexology and the techniques used can access and take note of areas in your body that may for instance be lacking in a good blood supply. Reflexology is one technique that can set the body into a healing mode by doing it naturally instead of through the use of medication.

Reflexologist, Gordon Smith has completed studies from the Australian School of Reflexology and Relaxation, situated in Melbourne, and recognised by Reflexologists throughout the world.

The theory of reflexology is that there are five zones of the body located in each foot. The left and right foot in turn are worked on by using a caterpillar technique, the body then responds to the reflexology and begins to heal within itself.

"Tender spots in the feet indicate nerve tension and a poor blood supply to an area of the body. As you work over the feet and stimulate these tender spots the body will automatically respond via the nerves and improve the blood supply to this area.

After regular visits you begin to pick up on areas that keep coming up as sore points. This could indicate problems in need of further investigation." Said Gordon.

Reflexology compliments orthodox medicine and by assisting to place the body in a balanced state may hasten the healing process.

Feet are one of the most important parts of the body and should be well looked after. Remember there are 7200 nerves there and a whole lot of built-up tension that could be waiting to be released. Why not do your body a favour? Gordon Smith can be contacted at Elegant Profile Beauty Salon. Phone 52 531744, mobile 0412 401 657 A/H 52 593759

DRYSDALE LADIES PROBUS CLUB INC.

REG. NO A0021357E.

Our February Meeting was a very Special One, it was our twelfth Birthday, celebrated with two large cream cakes - delicious, and a good attendance. Alison Elliott was our 5 Minute Biographer, and once again we got to know her life story - Thank you Alison. Our guest speaker was a very interesting lady, with a great sense of humour. Her name was Anne Bossence, retired Nurse,

Nanny and Author. She spoke of her days in Italy, working for a family, looking after two children. I do hope we have the pleasure of listening to her again, this time concentrating on her nursing years. Friendship Day was a huge success in Portarlington, and the weather could not have been better. We have a walking group called "The happy Wanderers", who meet each Wednesday, keeping fit

with lots of chatter. Another interest group. To those not too well, our best wishes. Our A.G.M. was held in March. Pat Williams has been our President for the past year, and Bev Hutcheon comes into the chair, well done Pat, and lots of support and friendship to you Bev.

Hoo Roo for now,
Jeanette Derham.



Are You Stressed & feeling Run down? Reflexology may be your answer!

- Reflexology:**
- Improves nerve & blood supply.
 - Relieves stress & tension.
 - Assists in returning the body to a balanced state.

Reflexology is applied by a caterpillar action of the thumb to the hands or feet via zones to all glands, organs and parts of the body. Reflexology is a therapy that compliments orthodox medicine and by assisting to place the body in a balanced state may hasten the healing process. Reflexology dates back to 2330 B.C. As a healing process.

HERE'S WHAT ONE CLIENT HAD TO SAY:

"I gave Reflexology a go, I had nothing to loose. My sleep habits were poor and I am on medication for stress related complaints. After one treatment, I had more spring in my step, slept better and in general felt more relaxed. My wife noticed a difference in me and my G.P. Commented on my next visit and praised the results of the Reflexology treatment"

Mr J. O. Portarlington.



Contact

**GORDON SMITH
REFLEXOLOGY PRACTITIONER**

At...

Elegant Profile Beauty Salon
Shop 3/3 Wyndham St. Drysdale
Phone: (03) 5253 1744 Mobile: 0412 401 657

Bellarine Bait and Tackle

FOR ALL YOUR
FISHING NEEDS.
IF WE DON'T HAVE
IT ASK AND
WE WILL
GET IT.



- Fishing Licences • Boating Flares
- Quality Bait and Tackle
- Prepacked Bait • Shark and Bait Berley

Loose Pippies \$3.50per kg

OPEN 7 DAYS-A-WEEK 7am-6pm
TO 8pm FRIDAY (flexible)

**4/46 Murradoc Road,
Drydale. Phone: 5253 2166**

Bellarine Historical Society - Preserving the History of the Bellarine Peninsula

Vale Myrtle

We, along with many other community groups regret the death of our honorary life member, Myrtle Filbay. Although she was a long time resident of the Leopold area, Myrtle was well known to many friends in Drysdale. By her marriage to Keith she became a member of a long established Drysdale family. Of recent years she was a familiar figure in Drysdale as she worked hard in the interests of the Bellarine Historical Society based at the Old Court House building. Myrtle held several positions including that of President in the society. Through the efforts of Myrtle and other faithful workers the Society was able to grow and develop into the active and widely known organization that it is today.

One of Myrtle's great contributions to people whose families had roots on the Bellarine Peninsula was the

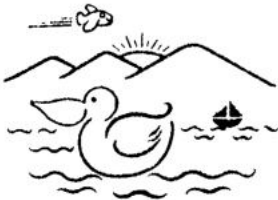
cataloguing of the society's large document and photograph collection. This is done by faithful volunteers who have been inspired by Myrtle at our Friday cataloguing sessions. Myrtle was also for some time active in answering research inquiries that the society receives from many parts of Australia by mail and, in recent years through the Internet via the society's web site. (<http://www.zades.com.au>)

Art Display

Many local residents may recall the art show and the associated launch of David Williams's book 'Potatoes Piers and Panoramas' at Portarlington Mill in October last year. The paintings are for sale and quite a number have been bought by people to whom the site depicted was of some significance or because of the value of the painting itself. If you would like to see some paintings that are as yet unsold, please

visit the Old Court House Museum at Drysdale. At this time of the year the museum is open on Sunday afternoons from 1.30 p.m. until 4.30 p.m. Paintings and copies of the book 'Potatoes Piers and Panoramas- A Living History of the Bellarine Peninsula' may be purchased at the Old Court House. The price of the book is \$25. Other publications of local interest are also available for sale. The many items on display at the museum are good value for the admission charge of \$2.20 including GST. If volunteer staff members are available, we may be able to open at your request the shed which contains many farm, municipal, commercial and household items too large for display in the main building.

Please support your local museum. Telephone inquiries may be made to Susie on 5255 5233 or Max on 5251 3611.



BEACON POINT PRE-SCHOOL INC.

49-55 Centaurus Ave. Clifton Springs, 3222.

THREE YEAR OLDS WANTED!

Beacon Point Preschool now has vacancies for your three year olds!

Phone 5253 1550 now for term three enrolments. See our dynamic kinder at work and talk to parents and teachers about our exciting program.

UNDER NEW MANAGEMENT

Drysdale Tasty & Delicious

Charcoal Chicken/Fish & Chips

- Freshly cooked Fish & Chips while you wait.
- Range of fresh Salads.
- 30 years Experience.
- Previously owned Portarlington
- Charcoal Chicken for 8 1/2 years.
- Friendly Service.
- Special catering for sporting clubs.

Come and visit us at:
Shop 3/30 High St Drysdale
(next door to Video Ezy)

OR

Phone your order in on **5253 1000**

VALID UNTIL END OF APRIL 2002



Attractive Returns

5.50%

Dennis Blake



Key Features

- Established for 15 years
- Attractive returns pay monthly
- Direct banking of income and withdrawals
- Withdrawals with as little as 24 hours notice
- Telephone redemption facility
- No front end fees
- Low or nil exit fee
- All first mortgage security
- Average loan ratio security 60%
- Minimum investment is \$1,000

PH 5229 4903
59 Fitzroy Street, Geelong

Please send me details of your services and a copy of the current prospectus

Name: _____

Address: _____

Postcode: _____

Ph: _____

Applications for investment must be on a form attached to a current prospectus. Australian Pensioner Advisory Services P/L ABN 16 007 427 974
Holder of dealers licence number 88176
Visit our Website: www.apas.com.au



Australian Pensioner Advisory Services Pty Ltd

"Helping Australians invest wisely"

We did it again !!!!

On behalf of the Bunyip and myself I would like to thank all the people of Clifton Springs and Drysdale for all the support that they gave to the Bunyip Festival this year.

Wow. What a day ! We started with the Town Crier officially opening the day and we finished with a spectacular display from the Roulettes. And in between we had fun and raised money for both Clifton Springs and Drysdale Primary Schools.

The Parents and Staff of both schools worked very hard to make this one of the best Bunyip Festivals yet. Our sincere thanks go to all our sponsors who enable us to put this festival together and provide items to auction, raffle and prizes for the wheel etc. We also thank the many service groups, including the Drysdale Guides, Drysdale Scouts, Drysdale Country Fire Brigade and

SES who helped to make this day a success for us and for our community.

Our 23rd Bunyip Festival will be held on Saturday 29th March 2003 at Drysdale Primary School from 10am - 3pm. If you would like to register the interest of your group to be part of or if you have any questions at all about the Bunyip Festival please contact either Clifton Springs or Drysdale Primary Schools who will put you in touch with the contact person for the next Bunyip Festival.



I've loved every minute of being the Convenor of the Bunyip Festival for the last 2 years, I thank the schools for giving me the opportunity to accept such a challenge. I believe the Bunyip Festival is an asset to our community and it really is a great day out for all the family.

Yours very sincerely
Anne Brackley

Drysdale Senior Citizens Club.

The club's 33rd Birthday celebrations were held at the club rooms on Monday 11th March. The members were treated to a lovely afternoon tea (Our thanks go once again to Irene James for the kind donation of the Desserts.). The afternoon's entertainment was put on by Portarlington Concert Party who did a wonderful professional job as usual for these entertainers. The Birthday Cake was again made by Val Bates, this lady really knows her stuff when it comes to making scrumptious Iced Fruit Cakes along with other goodies. Thank you Val.

I will report on the Ron Sudden afternoon entertainment held on March 18th (the day when this copy has to be in by) along with the day

trip to Ballarat in the next issue of the Messenger. Millers Fashions will hold a Fashion Parade at the club rooms on April 24th. Watch the notice board at the club for more details when to hand. All Welcome.

A Big Thank You to Ron Bishop for resurrecting the Pool/Snooker Table a while back. This table had been languishing unused for a very long time. Thanks to Ron for organizing it to be recovered. The cost was paid for out of club funds and it has proved to be very worthwhile, inasmuch that we have gained quite a number of new Male members which is good to see. The table is in use now on Tuesday, Wednesday, Thursday and Friday afternoons. The Craft Ladies

on Thursday afternoons are a little hive of industry regular busy bees and they turn out some lovely items.

If you are interested in joining us at the club, call in between 12noon and 4pm each week day, except Tuesday, we would love to have your company. A list of activities can be obtained from the Office - Jean or John will welcome you. Once again our grateful thanks to our wonderful Volunteer Drivers and Jockeys. Best wishes to our sick members - get well soon, we miss you all. All for this time, God Bless,

Yours Sincerely
I.M.Astill.

Uniting Church in Australia
CONCERN
VILLAGE OP SHOP
Come and browse through our range of good quality ladies and mens wear, plus our selection of young adult and childrens clothing and our range of small household goods.
DONATIONS OF GOOD CLEAN CLOTHING AND SMALL HOUSEHOLD GOODS REQUIRED
Phone: 5251 3640.
Shop 19/4 Village Walk, Drysdale.
Hours: Mon - Frid 10.00a.m. - 4.00p.m.
Sat - 9a.m. - 12 Noon.

MORTIMER PETROLEUM
PETROL STATION & CONVENIENCE STORE
97 High Street Drysdale Phone 5251 2603
Petrol, Autogas Bait & Fishing Supplies
CAR WASH
Open 6.00am-10.00pm

DRYSDALE KITCHENS
CABINETS & JOINERY
PH: (03) 5253 2774
EST. 1986

YOUR LOCAL REPRESENTATIVES

"SPRYlines"

Garry Spry MP Member for Bellarine

SHADOW MINISTERS VISIT THE BELLARINE PENINSULA

Shadow Cabinet met in Geelong this month to discuss the region and the issues concerning its residents, business, and community groups, followed by a series of on-site meetings. The focus of the Shadow Ministers on the Bellarine Peninsula was Whittington and the Clifton Springs Foreshore Boat Ramp.

The Shadow Minister for Rural and Regional Development, Bill Forwood, and I joined local residents and mussel farmers to discuss the

state of disrepair and plans for rejuvenation of the Clifton Springs Foreshore.

The Clifton Springs foreshore area is suffering from neglect and erosion. The unsightly condition of the boat ramp demonstrates a lack of Local Government and State Government support for both the local aquaculture industry and tourism.

Local residents have had enough of the dust, and unsightly conditions around the boat ramp. A petition to the City of Greater Geelong contains 333 signatures complaining about the current state of the site.

Whilst Clifton Springs has been a mussel production site since 1979, local aquaculture businesses and recreational boat owners are currently being forced to operate from this unattractive, run down area.

Local mussel growers desperately require the harbour area to be dredged of sludge to around two metres. The sludge is destroying outboard motors and contaminating the water and mussels.

The boat ramp itself needs attention in order to make it more useable by recreational fishing groups. In its present state local fishermen believe that it "is adequate for boats to six metres, but the passage to the sea is shallow and weedy making the ramp virtually unusable on low tide. The ramp is protected by a seawall from which anglers sometimes fish, but the water here is also shallow and weedy; not a promising spot at all." Outboard motors often get knocked off by the rocks where the mussel boats are harboured.

The beautification of this area will have a positive impact on recreational and tourism interests, as well as dramatically reinvigorating and extending the local mussel industry. Both State and Local Government need to get to work immediately on the ramp and the foreshore if they are to satisfy the needs of the people of Clifton Springs.



FLEA BUSTERS
MOBILE DOG WASH
Clipping, Bathing & Grooming

"A complete service by the true Professionals".

5281 1711

Professional Service For All Breeds At Your Own Home

The only Funeral Directors Permanently situated on the Bellarine Peninsula.



DRYSDALE & PENINSULA FUNERAL SERVICES

Committed to Caring

PHONE: 5251 3477
24 hours - 7 days

DRYSDALE HOTEL



- Open 7 Days
- New Winter menu
- Cosy log fires
- Daily blackboard specials

High Street, Drysdale.
Bookings Ph: 5251 2301

Take Control
its your choice

Take control in the face of health, relationship and lifestyle changes.

Highly experienced counsellor offers private consultations at Drysdale Community Health Centre
(tel: 5251 2291 bus. hours)

For appointments in Geelong and home visits,
tel: 5253 1589 or 0411 253 644 any time.
Evening and weekend consultations available.

Feeling Troubled? *Solutions can be found!*



Counselling

Confidential and Caring - Skilled and Professional

*Mens Issues *Womens Issues *Child/Youth *Relationships
*Sexual *Anxiety *Anger *Depression *Grief *Loneliness

(Fees negotiated according to Income)

PHONE : 5253 3060 Today!

Situated: 219-223 Jetty Road, Cnr. Cowies Rd, Drysdale, Bellarine Peninsula, Vic. 3222

YOUR LOCAL REPRESENTATIVES

Elaine Carbines MLC

CATHOLIC REGIONAL COLLEGE FUNDING BOOST

I am pleased to announce the allocation of \$270,000 to the Yarra Street Campus of CRC to refurbish the art/media/photography area and to provide space for music and drama.

This announcement is part of a \$15 million statewide allocation of capital works funding to needy non-government schools.

BELLARINE SHOW

The weather was good and a great time was had by all!

It was fantastic to see the much-loved Bellarine Show return this year. Congratulations to all organizers for a job well done.

As a member of the Bracks Government, I am pleased to demonstrate our continued support for the Bellarine Peninsula by the allocation

of \$10,000 to assist with the staging of the show at Portarlington.

CLIFTON SPRINGS FORESHORE

Last year I met with concerned local residents who discussed their ideas with me about the foreshore.

The City of Greater Geelong is the manager responsible for the area and I have indicated that I would be very happy to work with the City in any approach to the State Government to improve it.

At the time of writing I am awaiting a response from the City of Greater Geelong in relation to action proposed to improve the foreshore area.

PARLIAMENTARY SECRETARY FOR EDUCATION AND TRAINING

The Premier has appointed me as Parliamentary Secretary for Education and Training and I will be work-

ing in this role to assist the Minister for Education, Hon Lynne Kosky and the Minister for Education Services, Hon Monica Gould.

I am very honoured to take on this responsibility and pleased to be able to utilize my years of experience as a secondary school teacher in delivering the Bracks Government's number one priority.

The Silver Apricot

Portarlington

WOOL & KNITTING NEEDS

Giftware Jewellery Haberdashery
60 Newcombe Street
5259 3747

FREE INITIAL CONSULTATION

- ▼ ACCOUNTING & TAXATION SERVICES
- ▼ SMALL BUSINESS CONSULTANTS

FTA
ACCOUNTANTS & BUSINESS ADVISORS

5253 2992

CRN. OF SPRINGS RD. & HIGH ST., DRYSDALE

Beautiful Roses

There are lots of flowers to be seen and scents to be savored on our beautiful roses.



Alinga Nursery

Cnr Jetty Rd & Railway Crescent
Drysdale Ph: 5253 1299



Jim's Electrical

Your local contractor
REC 14856

For all repairs & installations
131 546
www.jims.net



CARROLL'S WOODCRAFT SUPPLIES

66 Murradoc Road, Drysdale. 3222
Ph: 5251 3874 Fax: 5251 3864
E: mail: carrolls@pipeline.com.au

WOODEN FOLK ART SUPPLIES

WOODCRAFT SUPPLIES

WOODTURNING TUITION

MACHINERY & HAND TOOLS

SAW SHARPENING SERVICE

POWER TOOL REPAIRS

ONE OFF & PRODUCTION TURNING

Frank Burge Cars

KEITH PURCELL
or
DAVID GALLOP

Phone: 5222 1606

Fax: 52218608

Mobile: 0418 554 011

172 Fyans Street,
South Geelong 3220

Clifton Springs Golf Club

Play By The Bay

Great Food -- Great Views -- Great Prices

TRY OUR FABULOUS \$5.50 LUNCHESES
(Monday to Friday only)

SUNDAY LUNCH ROAST
3 Courses for only \$11.00

A-La-Carte menu also available

Pro Rata Golfing
Memberships
now available
only \$198.00

April
Live Entertainment
(7.30pm-10.30pm)

Friday 5th - Peter Perez

Friday 12th - Utopia

Friday 19th - The Trio

Friday 26th - Warm Sands



Morning Melodies
will be back in
May 2002
Hope to see you
there

Social Membership
Only \$5.50

Sunday to Thursday Evening
\$3.50 Meal Deal

Buy one main meal off our regular menu and receive another
of equal or less value for only \$3.50
on presentation of this coupon.
(not valid Public Holidays and Long Weekends)
VALID until April 30th 2002

LIVE SHOW
"MAORI MAGIC"
starring BEAU FITZ
SATURDAY 27TH APRIL
\$30pp includes show & meal
Don't Miss out **BOOK NOW**

Phone Bookings-52513391

Springdale Neighbourhood Centre



COURSE GUIDE TERM 2 - 2002

Address: 14 Princess Street, Drysdale
Phone: 5253 1960
Fax: 5253 3050
Email: sprdalecc@primus.com.au
Opening Hours: Monday - Thursday 9:30 am - 3:30 pm
Friday 9:30 am - 1:00 pm



Educational, Leisure, General Interest Programmes Learning Can Be Fun!!

ENROLMENT & PAYMENT INFORMATION

Enrolment:

To enroll in a class, call in person to SpringDale Neighbourhood Centre, 14 Princess Street, Drysdale or Phone 5253 1960.

- If you hold a current Concession or Health Care card, you will receive a 5% discount on full course fees.
- Class bookings are confirmed when payment is received.
- Should a class be cancelled due to lack of enrollments or another reason, fees are refunded in full and enrollees notified by phone. People wishing to withdraw from a course must do so prior to commencement of the course. Where fees have been paid a refund will be issued with an administrative fee of \$8.00 deducted. Where a person withdraws after commencement of a course no refund will be issued.

Payment:

Classes must be paid for no later than one week prior to the commencement of class.

Credit card facilities are available for payment.

Payment can be made in person at SpringDale, over the phone or by mail.

To pay by mail complete the form below and send it to: SpringDale Neighbourhood Centre, P O Box 80, Drysdale, 3222.

Contact staff for further information.

Lisa Neville (Co-ordinator)

Sally Angus (Education ????????)

Rosie Saffioti (Administration)

1. Class: _____

Time: _____ Date: ___/___/___ Venue: _____

2. Class: _____

Time: _____ Date: ___/___/___ Venue: _____

I am paying the amount of \$ _____ by:

Cheque/Money Order payable to: SpringDale Neighbourhood Centre

Bankcard/Visa/Mastercard No: ___/___/___/___ ___/___/___/___ ___/___/___/___ ___/___/___/___

Expiry Date: ___/___/___ Cardholder Name: _____

Signature: _____

Receipt Required?:

Yes

No

HEALTH & WELLBEING

YOGA

Experience balance and harmony of mind, body, emotions and spirit. Exercise through breathing, stretching and relaxation Rubber mats can be obtained from shops like the Reject shop.

Date: Monday 22nd April-24th-June(excludes 10th June)

Time: 11am-12.30 pm. & 9.15am-10.45am

Fee: \$82.00(9x 1 1/2 hour sessions)

Venue: The Guides Hall, Sports Reserve, Sproat St. Portarlington

Tutor: Glenda Breedveld

Materials: 1 Rubber Mat

Date: Monday 22nd April - 24th June

(excludes 10th June)

Time: 1:45 pm - 3:15 pm Fee: \$82.00 (9

x 1 1/2 hour sessions)

Venue: St Thomas Hall, Wyndham

Street, Drysdale

Tutor: Glenda Breedveld

Materials: 1 Rubber mat

Date: Wednesday, 24th April - 26th June

Time: 1.45 pm - 3.15 pm

Fee: \$92.00 (10 x 1 1/2 hour sessions)

Venue: St Thomas Hall, Wyndam Street, Drysdale

Tutor: Glenda Breedveld Materials: 1 Rubber mat

Date: Thursday, 18th April - 27th June

(excludes 25th April & 23rd May)

Time: 6.00 pm - 7.30 pm Or 7.45 pm -

9.15 pm

Fee: \$82.00 (9 x 1 1/2 hour sessions)

Venue: Bellarine Community Health

Centre, Palmerston St. Drysdale

Tutor: Glenda Breedveld

Materials: 1 Rubber mat

TAI CHI

Introduction to Tai Chi

A gentle, relaxing exercise program.

"Sun Style" Tai Chi is an easy to learn set of 12 movements taught by a trained instructor. This form is also highly recommended for those who suffer from arthritis.

Date: Monday, 22nd April - 24th June

(excludes 10th June)

Time: 6:30 pm - 7:30 pm Fee: \$81.00

(9 x 1 hour sessions)

Venue: Bellarine Community Health

Centre, 21 Palmerston Street, Drysdale

Tutor: Sue Simpson

BELLY DANCING

Beginners to Intermediate

An age-old celebration of dance.

Inclusive of all age groups, body sizes and fitness levels. Start/or continue to develop your skills and have a lot of fun. There is something here for everyone! New participants always welcome, so grab a friend and come along.

Date: Tuesday, 14th May - 25th June

Time: 7.00 pm - 8.00 pm

Fee: \$40.00(7 x 1 hour sessions)

Venue: Drysdale Community Hall, High

Street, Drysdale

Tutor: Delyce England

Performance Troupe

Pre-requisite: Some previous belly dancing experience and a desire to perform.

Date: Tuesday, 14th May - 25th June

Time: 8:15 pm - 9:15 pm

Fee: \$40.00(7x 1 hour sessions)

Venue: Drysdale Community Hall, High

Street, Drysdale

Tutor: Delyce England

FIRST AID

First Aid - Level 1

Participants who complete the module successfully will be competent in managing life threatening emergencies at home, leisure or in the workplace.
Date: 29th April-May 6th
Time: 6:30 pm to 9:30 pm
Fee: \$70.00 (2 x 3 hour sessions)
Venue: SpringDale Neighbourhood Centre
Tutor: National First Aid

First Aid -

Workplace Level 2

An accredited certificate, valid for 3 years (with CPR updates) required in many courses and work places. Covers all modules taught in Level 1 plus additional emergency treatment and management procedures.
Date: Monday, 29th April - June 24th
Time: 6:30 pm - 9:30 pm
Fee: \$135.00 (6 x 3 hour sessions)
Venue: SpringDale Neighbourhood Centre, Tutor: National First Aid

CPR Update

(Cardiopulmonary Resuscitation)
It is recommended that CPR updates occur annually. Refresh this vital skill and enjoy "peace of mind" that you will know what to do.
Date: Monday 29th April
Time: 6:30 pm - 9:30 pm
Fee: \$35.00 (1 x 3 hour session)
Venue: SpringDale Neighbourhood Centre
Tutor: National First Aid

Positive Thinking and Meditation

(Make your mind your best friend) You are what you think. What you say, what you do, what you feel-all have their origins in the mind. When you understand and harness the energy of the mind, then you are able to master your life and produce those thoughts which give you the most happiness.
Date: Monday April 22nd (1 session)
Time: 1-3pm Fee: \$20.00
Venue: The Guides Hall Sports Reserve Sproat St, Portarlington
Tutor: Jill Deglaitis

The Art of Letting Go

Holding onto the past can spoil our relationships and prevent us from reaching our potential. This program will focus on letting go of the past and the healing qualities of meditation.
Date: Monday 29th April
Time: 1-3 p.m Fee: \$20.00
Venue: The Guides Hall Sports Reserve, Sproat St. Portarlington
Tutor: Jill Deglaitis

General Interest and skills

Wine Appreciation

Introduction to Australian Wine (Level 1)
This program will take the form of a series of tutored tastings of quality wines, accompanied by informed comment with concise notes provided. Boyd Piercy has had extensive experience in educating and training members of the liquor and hospitality trades within Australia and overseas. A course outline is available at SpringDale
Registration is required no later than May 13th, to assist with ordering.
Date: Wednesday June 5th-26th (4 sessions)
Time: 7-9 pm
Fee: \$70
Venue: Springdale N.H.C.
Tutor: Boyd Piercy (Founder Member and Practising Wine Educator Australian Society of Wine Education Inc.)

APPLY BASIC FOOD SAFETY PRACTICES

(Formerly Food Hygiene for Food Handlers-Level 1&2)
Safe food handling skills are essential for your business and are now a requirement by law. This accredited module will give you the necessary knowledge and skills in correct and safe food handling, food storage and food hygiene. A certificate will be issued upon successful completion of the module.
Date: 8th/15th and 22nd May
Time: 6.30-9.30
Venue: C.F.A. (High St Drysdale)
Tutor: GATE
Fee: \$50.00(\$40.00+\$10Ammenities)

Writing for Children

(CREATIVE WRITING MODULE- VBE-510) The purpose of this module is to provide participants with the knowledge and skills to write for children with attention to subject matter, story, characters and the ethical considerations required in children's writing. This module will be taken from the accredited Creative Writing Course. A certificate will be issued on the successful completion of the module.
Date: May 7th-23rd July (excludes 2nd and 9th July) 10 sessions
Time: 7- 9.30 pm
Fee: \$50 (Subsidised Accredited module)
Venue: SpringDale
Tutor: Elaine Hurst

Men after Seperation and Divorce

Looking Back- Moving Forward
A 4 week program for men coping with the range of issues which arise following a separation or divorce. The program will look at the associated experiences of

isolation and loss while exploring ways to maintain or develop positive support networks. Participants will be able to look at strategies for negotiating the path to a new self identity and future.
Date: May 1st (Wednesdays)
Time: 7.30-9.30
Fee: \$25pp
Venue: Springdale
Tutor: Bethany Family Services Ring Greg Roberts on 52788122 for more information.

Let's Talk About Stress....

Do you feel stressed and anxious, bad tempered, have low self esteem, constantly worry or just don't know how to cope? Come along and learn how to enjoy a more meaningful and productive life-style. Mary-Ruth Dowd, experienced Counsellor and Therapist (from BethBirri Counselling Practice) is holding a group session on Stress Management which could help you.
Date: Tuesday 14th May (1 session)
Time: 7-9pm Fee: \$25.00
Venue: SpringDale
Tutor: Mary Dowd

Learn How to play Guitar

A basic course for those wanting to learn the skills to enable them to play along with simple tunes or accompany themselves or others singing basic songs. Learn how to play several chords and have some fun!
Date: April 24th- June 12th Wednesdays (8 sessions)
Time: 7-8.15 pm.
Fee: \$70.00
Venue: SpringDale
Tutor: Grant Dick Materials: BYO Guitar (materials list available on payment)

Money Matters

(Tips to help maximize your budget \$ and make the best of your available resources)
Most of us are on a budget but what does that really mean? This session aims to provide information on how to really get your budget on track. With helpful tips and discussion on how to formulate an effective budget for your needs. Includes savings ideas; this is a workshop for all ages and stages!
Date: May 29th (wed) 1 Session
Time: 7-9pm
Fee: \$5 per person
Venue: SpringDale NHC
Tutor: Nick Trehwella (Jindarra)

How to Take Better Photos

Are you sick of pictures with red eyes, blurred images and over exposed images? This is a session for the non-technical who want to improve their photographic skills. Sometimes it can be as simple as using the incorrect shutter speed or the way you hold the camera.

Your photos will be assessed and discussion of problems centred on issues of participants.
Date: May 16th Thursday (1 session)
Time: 6.30-9.30p.m Fee:\$25.
Venue: Springdale
Tutor: Terry Oakley (The Picture Source)
Materials: Bring along your camera and half a dozen photos for use in discussion (good and bad ones)

HOT REAL ESTATE

This session will be guided by areas of interest to participants but will include information on buying and selling houses, tips on how to present your property, how to choose an agent that is right for you, how to market your property, searching on the net, conveyancing and much more! Handouts will be included.

Date: Thursday May 23rd
Time: 6.30-9.30 (1x 3 hour session)
Fee: \$20.00
Venue: Springdale NHC
Tutor: Doug Williams (C.J.Keane)

ARTS & CRAFTS

Naïve Country Quilt (Simple)

This course will show you how to create a beautiful and simple to make Country Quilt. No experience is required and the quilt can be either hand or machine made. You will be guided step-by-step by our very experienced craft tutor, Gloria. A materials list will be provided upon enrolment.

Date: Monday, 29th April - 3rd June
Time: 10:00 am - 12:00 noon
Fee: \$35.00 + supply of some materials (6 x 2 hour sessions)
Venue: SpringDale Neighbourhood Centre
Tutor: Gloria Stead

Country Dolls

Gloria will guide you to create your own country/character doll, using your imagination and any trinkets from Grandma's bottom draw to create a doll with its own personality.

Date: Tuesday, 7th May - 28th May (4 sessions)
Time: 10.00 am - 12 noon
Fee: \$25.00 (+ supply of some materials)
Venue: Drysdale Community Hall, High Street, Drysdale
Tutor: Gloria Stead A materials list will be provided on payment.

Water Colours

An opportunity to begin a new interest or to develop your skills further. Learn the skills required to open up your creative side.

Date: Tuesday, 7th May - 18th June
Time: 10:00 am - 12:00 noon
Fee: \$72.00 + supply of some materials. (List available on payment at the Centre) (7 x 2 hour sessions)
Venue: SpringDale Neighbourhood Centre, 14 Princess Street, Drysdale
Tutor: Brian Close

Introduction to Drawing

(with Pencil and Charcoal)
This class is designed for beginners. Explore your creative side ... book today!

Date: Tuesday, 7th May - 18th June
Time: 1:00 pm - 3:00 pm
Fee: \$72.00 + supply of some materials. (List available on payment at the Centre) (7 x 2 hour sessions)
Venue: SpringDale Neighbourhood Centre, Tutor: Brian Close

Bunka Punch Embroidery

This is the embroidery any-one can do. The stitches are simple and easy to learn, the results absolutely gorgeous. Embroidery pictures are created using an easy to hold pen-like needle. Wonderful for those with arthritis or who don't have the patience for traditional embroidery. Quick, easy and fun.

Date: 8th May - 22nd May (3 sessions)
Time: 10.00 am - 12.30 pm
Fee: \$72 This includes the cost of all materials and tools (needle, frame and cards)
Venue: SpringDale Neighbourhood Centre
Tutor: Sheila Sapper

Mosaics

The classes consist of lessons in the skills needed to create a basic piece of work by the end of the course. Great for home renovations.

Date: Monday, 6th May - 27th May (4 sessions)
Time: 10.00 am - 1 pm
Fee: \$130 - includes supply of materials and tools
Venue: Drysdale Community Hall, High Street, Drysdale
Tutor: Glass in the Groove

COMPUTER CLASSES

For Beginners:

Introduction to Computers and the Internet

Learn basic computer skills using Microsoft Word. Learn Windows 98, Introduction to Microsoft Word and Introduction to Internet and Email.

Date: Monday, 6th May-24th June (excludes 10th June)
Time: 9.30-12.30p.m.
Fee: Subsidized: \$50.00 (\$16 + \$34 amenities fee + Internet access) Full course fee: \$95.00
Tutor: L. Brooke

Date: Monday 6th May -24th June (excludes 10th June)
Time: 5:30 pm - 8:00 pm (7 x 21/2 hour sessions)
Fee: Subsidized: \$50.00 (\$16+\$34 amenities fee+ Internet access)

Venue: SpringDale NHC
Tutor: L.Brooke

Date: Tuesday 7th May-18th June
Time: 9:30 am - 12:00 noon (7 x 21/2 hour sessions)
Fee: Subsidized: \$50.00 (\$16 + \$34 amenities fee + Internet access) Full course fee: \$95.00
Venue: SpringDale Neighbourhood Centre, 14 Princess Street, Drysdale
Tutor: Lynette Brooke

Subsidized places are funded through ACFE (Adult Community & Further Education) and are available for those seeking re-entry into the workplace, the unemployed and those over 55 years of age.

Introduction to Computers and the Internet for the Over 55's

Date: Monday 6th May -24th June (excludes 10th June)
Time: 1:00 pm - 3:30 pm (7 x 21/2 hour sessions)
Fee: \$50.00 subsidized (\$16 + \$34 amenities fee + Internet access) \$95.00 full course fee
Venue: SpringDale Neighbourhood Centre
Tutor: Lynette Brook

Date: Friday, 3rd May -14th June Time: 9:30 am - 12:00 noon (7 x 21/2 hour sessions)
Fee: \$50.00 subsidized (\$16 + \$34 amenities fee + Internet access) \$95.00 full course fee
Venue: SpringDale Neighbourhood Centre, 14 Princess Street, Drysdale
Tutor: Lynette Brook

Intermediate Computer - Microsoft Word

This is the follow-on from our Introductory course. Topics covered include Tables, Tabs, Bullets & Numbering and Columns etc. Basic computer skills required.

Date: Thursday, 6th June-27th June
Time: 6:30 pm - 9:00 pm (4 x 21/2 hour sessions) Fee: \$85.00
Venue: SpringDale Neighbourhood Centre
Tutor: Lynette Brook

Introduction to Desktop Publishing

Applications covered include working with clip art and with text. Learn how to enhance your presentations and have some fun too! Create brilliant flyers, newsletters etc. Basic computer skills are required.

Date: Friday 3rd May-24th May
Time: 1-3.30 p.m. Fee: \$85.00 (4 x 21/2 hour sessions)
Venue: SpringDale Neighbourhood Centre
Tutor: Lynette Brook

Introduction to Excel

For all those financial planners and money managers, Excel is an easy to learn yet powerful program for people wanting to put together Profit and Loss statements, do their own tax calculations, get ready for another BAS (showing GST inputs and outputs), show their work as a graph or bar chart/pie chart- and even import your excel database file (or only some of it into a word document-bringing the whole thing together as a professionally presented report.
Date: May 15th-29th (3 sessions)
Time: 7:00 pm - 9:00 pm
Fee: \$45.00
Venue: SpringDale Neighbourhood Centre, 14 Princess Street, Drysdale
Tutor: Marg Toliday

Digital Imaging

An overall introduction to the latest Digital Image technology and how to apply them. Topics will include digital theory, computer systems, digital input (scanners and cameras), image editing software and digital output (printers, film recorders etc.) Emphasis during this course will be on practical demonstrations and hands on practice. Experience with computers and Windows software is desirable.
Date: June 4th-July 2nd (Tuesdays)
Time: 7:00 pm - 9:30 pm (5 x 2 1/2 hour sessions)
Fee: \$78.00
Venue: SpringDale Neighbourhood Centre
Tutor: Terry Oakley (The Picture Source)

Skillsnet - Internet and Email Training

SpringDale Neighbourhood Centre, through the support of Vicnet, is funded to provide Internet training and access to the local community. Eligible participants will receive 5 hours of Internet access time at the Centre (free-of-charge) after completing the course. Access will also be available at Portarlington Community Health Centre.

Skillsnet - Internet Training Internet and Email training can open up a whole new world. Training is provided in a friendly and supportive environment by experienced tutors. Learn how to use the internet/ send and receive emails. Also, a great way to keep up with family and friends- wherever they may be.
Date: Thursday 2nd and 9th May Or
Date: Thursday 16th and 23rd May
Time: 9.30-12pm (2 x 2 1/2 hour sessions)
Fee: \$20.00

Venue: SpringDale Neighbourhood Centre
Tutor: Sue Ashby (Lara Computers)

Date: Wednesday, 5th and 12th June
Time: 6:30 pm - 9:00 pm (2 x 2 1/2 hour sessions)
Fee: \$20.00

Venue: SpringDale Neighbourhood Centre
Tutor: Julie Phillips

Genealogy (Skillsnet)

Discover the Internet while investigating your family tree. Learn research skills, tips and advice. Bring any documents you have to help get you started (Birth, Death, Marriage certificates).

Date: Wednesday May 1st and 8th Or
Date: Wednesday 5th and 12th June
Time: 12.45- 3.15pm
Fee: \$20.00 (2 x 2 1/2 hour sessions)
Venue: SpringDale Neighbourhood Centre, 14 Princess Street, Drysdale
Tutor: Pat Hughes

CHILDREN'S PROGRAMS

Occasional Care

Three hour sessions enable parents to take a break, undertake a class, do shopping etc. It also gives your child an opportunity to socialize and play with other children in a supervised program with qualified staff.

Sessions are:

Days: Monday, Tuesday, Wednesday and Friday mornings
Time: 9:00 am - 12.00 noon
Fee: \$14.00 per session Special rates apply to families with more than one (1) child attending and those attending a class at the Centre. Term 2 commencing 15th April 2002

Bellarina Toy Library

The Toy Library is open the first and third Thursday of every month between 3:30 pm and 5:00 pm and Saturday mornings 10.30 am to 11:30 am. We have some fantastic toys to borrow (ages 0 - 6 years) so come along if this time suits you and see what we have to offer!

SPECIAL INTEREST GROUPS

SpringDale Singers

A mixed voice choir meeting on Tuesdays from 1:30 pm to 3:30 pm in the Drysdale Community Hall. New members welcome. Persons interested may come as visitors on any Tuesday.

Walking Group

If you enjoy regular walking and would like some company, we can put you in touch with some like-minded walkers. Call Springdale for more details.

Weekly Craft Groups

An opportunity to meet people, learn new crafts, or teach others your specialty. Meet weekly during school terms. New members welcome. Ring SpringDale for more details:

Sew & Sews

(Wednesday Morning Group) 10:00 am - 12:00 noon (Childcare available)

Whicraft

(Wednesday Afternoon Group)
1:00 pm - 3:00 pm

Friday Afternoon Craft Group

1:00 pm - 3:00 pm (Childcare available)

Writers Group

This group meets the second Thursday of each month 1:00 pm - 3:00 pm at SpringDale Neighbourhood Centre, 14 Princess Street, Drysdale New members welcome. Ring SpringDale for more details.

Queenscliff & District Woodworkers

Meet first and third Monday of the month at 2:00 pm at Drysdale Community Hall, High Street, Drysdale. New members welcome. Just turn up if you are interested. Enquiries to the Secretary, Ray Roberts, Tel: 5251 2183.

Middle East Dance Group

Meets each Tuesday afternoon at Springdale. Contact Springdale for more details.

YOUTH GROUP

(Friday Nights) For 13-17 year olds. We do a range of fun activities and excursions, including computers, internet, painting and much more! With Christine and Kylie. Venue: SpringDale Neighbourhood Centre 14 Princess Street, Drysdale Phone SpringDale on 5253 1960

OTHER SERVICES

Springdale also provides facilities to the public which include:

* Computer access * Internet & Email access * Photocopying * Faxing * Hall rental *

Please call SpringDale for further information on the above.

SpringDale Neighbourhood Centre is proud to be a member of Bellarine Education and Community Network (BEACON) which is a partnership between four neighborhood Houses on the Bellarine Peninsula. The Neighbourhood Houses which make up BEACON are: SpringDale Neighbourhood Centre, Bellarine Living and Learning Centre, Ocean Grove Neighbourhood Centre and Queenscliff Neighbourhood House. Promoting Learning in the Local Community

Contact:-

Ph: 5253 1960
14 Princess Street
Drysdale

Ladies Probus Club of Bellarine Inc. Reg. No. A14696T.

We are almost at the end of the Presidents Year in office. Margaret has enjoyed her term and looks forward to being in the wings for the next year as ex officio. The next meeting will be the AGM when a new committee is elected and Faye Kemp will lead the new team. I am sure she will do a great job.

It has been decided that the subscription rates for the new years membership will remain as before. At the last meeting we had Margaret and Faye relating their own experiences on their recent trip to the Pyramids, and the trip down the Nile. It was as we expected a very humorous account and in Costume. That was only a small account of their holiday, I believe we are in for more

stories later in the year. We all look forward to that.

6 New Members were welcomed to the club, to share in the fellowship and friendship. The old members are always requested to take care of the newcomers, and make them feel welcome. There are several dates which members are invited to:-

Sept 26-Oct 3rd. - Probus Vic Arts, Crafts and Hobbies Expo. Whitehorse Centre, 397 Whitehorse Rd. Nunawading.

Nov.19th. - Probus Vic. 2002 Musical Variety Concert. At the same address in Nunawading.

Puffing Billy Lunch Trip. Friday 19th. April - Some members have been on the train before and for others like me it will be the first time,

so I am, as are many other members looking forward to the trip, to have lunch and an afternoon on the train. The Club has a number of Activity Groups. They continue to meet in members homes and include Mah-jong, Canasta and Scrabble.

Our Craft Group who make the most lovely cards for Birthdays, get well and thinking of you cards are continuing to do a great job, but after 10 years one of the members Shirley Watson has had to call it a day, her arthritis restricts her hand movements. Thanks Shirley, your artistic creations will be missed.

Yours in Friendship.
Iris Liz Tolton.

What's happened and what's happening at the CLIFTON SPRINGS GOLF CLUB

At last we now have the full 18 holes opened after a very successful couch program on the front 9 holes. Response to the works from members and guests has been extremely positive and now gives a playing surface of couch grass never seen before at Clifton Springs Golf Club.

The Bistro and Foyer now look a million dollars with new carpet and new furniture with only new blinds left to complete the refurbishment.

Work is on schedule with the extension to the Members Lounge with the external roof completed and lock up stage to be completed by the end of March. The views from the new room will be equivalent or surpass the views currently available in the Bistro.

A great night was had by all at the last big show which featured "Creedence Clearwater Recycled" complimented by a superb 2 course meal. On Saturday April 27th the Club has secured the services of Beau Fitz and his show "Maori Magic". Beau is recognised as New Zealand's number 1 performer in the cabaret scene. Tickets for this show are only \$30 per person for the show and 2 course meal but you need to book early.

Don't forget the free live entertainment every Friday night in the Bistro so why not organise a table and make a booking which is essential and also watch out for the new Autumn menu to be released shortly.

From 1st April Pro-Rata full golfing memberships are available for the great low cost of only \$198.00 with no join-

ing fee applicable. Application forms are available at the Club. Social memberships are also available for only \$5.50.

If looking for a game of golf, great show or somewhere to dine Clifton Springs Golf Club is the place to visit.

David Milne
Manager

BELLARINE FENCING Co

For all your fencing
& gate needs,
- Picket - Paling -
Heritage Wire.

Phone: Andrew & Gayle Baylis
on 5251 3090 or 0417 544 887



Quality Butcher

PETER HOMMELHOFF

HOMMY'S
QUALITY MEATS

For something new and different

16 High Street, Drysdale 3222.

Phone: 5251 2270

The SpringDale Messenger

**Save more
than interest on
a home loan.**

Receive a 0.2%pa* reduction on your residential variable home loan interest rate by including a Bendigo Mortgage Saver Account and home and/or contents insurance (with BBL Insurance Agency) with your Bendigo Ultimate Home Loan.

For more information call into your Community Bank Branch at 44 Newcombe Street, Portarlington, or phone 5259 3266.

Bellarine Peninsula
Community Bank Branch  Bendigo Bank

*This is a 0.2% reduction on the Residential Variable Home Loan interest rate which is currently 6.10%p.a. Subject to terms and conditions. Fees and charges apply. All rates are subject to change. Effective 1 January, 2001. www.bendigobank.com.au Bendigo Bank Ltd, Fountain Court, Bendigo VIC 3550 ABN 11068049178 BBL1381 31/01/02.

Is fear holding you back?



Photography by: MARK STRACHAN

Fear can stand in the way of reaching our full potential, pushing the limits or seeing possibilities as they arise. It can blind us to opportunities and concentrate on problems. Fear can be aptly defined as 'False Expectations Appearing Real'.

Fear is when we assume the worst in situations we haven't tried and anticipate difficulties or obstacles that may not exist. It prevents us from exploring our abilities and overcoming challenges.

Fear can also create unnecessary barriers within our community. People with disabilities can face isolation. Invitations home to play or to attend parties can decrease over the years. Within the community there may be reluctance to expect adults with special needs to join in ordinary social activities.

In dramatic contrast, the Bentley family and their friend Tom have overcome any fears they may have felt in exploring a new relationship. Steve, Corinne and their sons are

hosts with Interchange, a program that promotes friendships between volunteers and people with special needs.

Tom and his family may have been anxious initially, meeting new people and trusting Tom into their care. However Tom's mother, Helen, says, "the friendship with the Bentley's has given Tom the extra confidence to reach out and try new things in other areas of his life".

Most Interchange Hosts are nervous about their ability to care for a person with special needs. However the Bentley's gained confidence over time. They feel Tom's friendship is important to their sons, Jackson and Lukas. Corinne says, "Tom really is a pleasure to have. You can always count on some fun happening when he comes to visit. He has a great sense of humour and the boys share many jokes and pranks together."

Steve and Corinne Bentley have an extremely busy lifestyle, but Tom is included in their family activities so time is not an issue for them. They both feel that any busy couple or family could do as they have done and be an Interchange Host.

There will never be a better time. Call now! Phone 5221 2984 Interchange : Gateways Support Services Inc.

DON'T SELL YOUR PROPERTY ...

Until you talk to us!

We guarantee you: **Honesty.**

Ethical practice.

Professional Service.

Vendor's interests paramount.

Feedback on inspections.

Genuine sale valuations.

Highest prices achieved.



Bayshore FIRST NATIONAL
REAL ESTATE

26 High Street, Drysdale. Telephone 5251 2610



WISE GUYS
MENS HAIRSTYLIST
"Its the cut that counts"

So come and see
Manfred, Wendy, Stan, Bec
for all mens and boys styling

* STUDENT AND PENSIONER *
DISCOUNTS

No appointment necessary

Shop 1,
Wyndham
Street,
Drysdale.



5253 2206

Drysdale Senior and Ranger Guides

A fantastic time was had by the Drysdale Ranger Guides recently. A day out sailing and cruising at six knots was a wonderful experience. The Senior Guides are busy planning for their annual competition camp, Stradbroke Cup. This camping experience is a great opportunity to learn new skills and meet girls from other areas around Geelong. We would also like to welcome all our new Guides including Rachael and Steph. We hope you really enjoy the many experiences you will get as a Guide. We would also like to say 'Thanks Guides' for all your help at the Bunyip festival. What a great way to be involved in our community.

Drysdale Senior and Ranger Guides.



BELLYRINE BELLES

THE SPRINGDALE NEIGHBOURHOOD CENTRE BELLYDANCE TROUPE

The start of the year has seen big things for the girls in the troupe. Over the Christmas break they performed several dances at the tranquillity festival in Ocean Grove. At the end of the performance they encouraged the audience to take part and approx 40 -50 people got up and joined in, which was a great finish to a great day.

Then later in the term we all travelled up to Melbourne (St Patrick's Day) to perform at a Middle East restaurant in Smith St, Collingwood.

Performing a traditional Gawazee dance, complete with turbans, facial tattoo's and accompanying ourselves with finger cymbals, we gave

a bold, colourful and well-executed performance.

The next public performance will be at G.P.A.C. at the dare to dance festival held during April at GPAC.

If you want to join in fun classes which are suitable for all women regardless of age and size, enquire at Springdale Neighbourhood Centre. The introductory classes are not per-

formance based and are held on a Tuesday evening. If enough interest is shown, day time classes will be arranged.

A cabaret night is usually held mid year where the troupe perform as do individual members, and the year ends with a pampering weekend away from husbands, children and domestic chores.

NEEDLE SYRINGE PROGRAM

Are you using drugs?
If so, then protect yourself from HIV and Hepatitis C.

Obtain clean fits from the Drysdale Community Health Service
21 Palmerston Street, Drysdale.

A CONFIDENTIAL service.

No questions asked.

MAGGIE GOVE N.D.

Bowen Therapist
& Naturopath

Member of A.N.T.A.

Drysdale: Clinic 03-5251 1188

Ah 03-5253 2230

(Rear of Elegant Profile)

BELLARINE AUTO SERVICES

Quality Mechanical Repairs

Tuning - Servicing

LPG Conversion - EFI

Tyres - Batteries - RWC

Licensed Vehicle Testers

Mortimer St. Drysdale

Proprietor: J. Pamplin

Ph. 5253 1644

Salvation Army Family Stores

Mortimer St. Drysdale

Ph. 5251 2475

Plenty of Bargains

The Place to Shop

Come and see us We are here to Help You

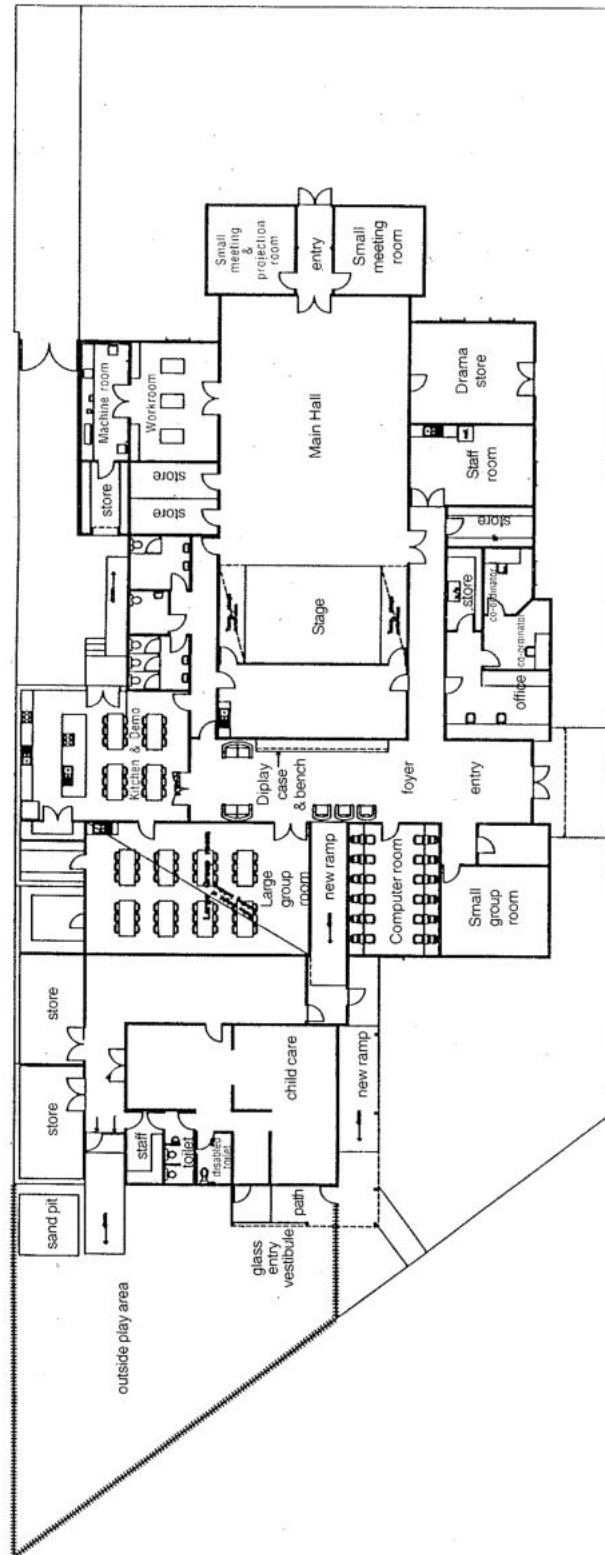
Robert Tucker Piano Services
C/- Tuckerberry Hill.

Qualified Piano Tuner
and Member of Piano Tuners and Technicians Guild of Australia.

Tuning, Regulation,
Restoration and Repairs.


Phone: 5253 3438

Have a look at our new plans for SpringDale



Sketch Plan	
Proposed Alterations	House
100, Street, Drysdale	
ARCHITECTS	
P. J. O'NEILL & ASSOC. PTY. LTD.	
100, Street, Drysdale	
Scale: 1:100	
Date: 10/10/00	
Drawn by: J. O'NEILL	
Checked by: J. O'NEILL	
Approved by: J. O'NEILL	

FLOOR PLAN



Drysdale Physiotherapy & Sports Injury Clinic

- Spinal ■ sports ■ Manipulative ■
- Arthritis ■ Workcover ■ TAC ■ Vet Affairs ■
- Hydrotherapy ■ Exercise Rehabilitation ■

Elise Riley Peter Terry Emily Turner
MAPA MAPA, MPAA MAPA

Ph. 5251 2958
 27 - 29 High Street, PO Box 179, Drysdale 3222

BONE MARROW RECYCLE SHOP

High St. Drysdale

Donations of good clothing and brick-a-brac needed.

All proceeds from our shop go to help those with Leukaemia

Chui Yuan 酒翠家園

Chinese Restaurant (B.Y.O.)

TAKE AWAY & HOME DELIVERY
 FUNCTIONS & GROUP BOOKINGS A SPECIALTY
 QUALITY & CLEANLINESS ARE PARAMOUNT
 REASONABLE PRICES
 * \$6.00 LUNCH SENSATION MENU

Ph. 5253 1788
 Shop 2, 26-28 High St. Drysdale, 3222.

In Your Garden

It is officially Autumn, the best time of the year as far as I am concerned. Beautiful warm days, cool nights and the start of magnificent Autumn colour displays from our deciduous trees. Some of the trees in our garden have started showing very early signs of coloring up, with some even looking like they are keen to start dropping leaves. This could be the start of an early season or the continuation of some very confused seasons. Either way it is a great time to get out and enjoy your garden. The roses should be looking great with the beginning of their Autumn flush of flowers. The usual

list of suspects are to be watched for to ensure that your display is not spoiled. Aphids will suck on the new growth, little caterpillars will gnaw holes in the flower buds, these can be controlled easily with the thumb and forefinger squish. If you are not into squishing, then Pyrethrum or Garlic spray will make them very unhappy. Powdery Mildew and Black Spot tend to return this time of the year and a regular spray of a good rose fungicide will keep them nice and clean, Triforine, Mancozeb, Baycor will do the trick. For those of you who are inclined to do a little vegie gardening it is a good time to

get things on the move for your Cabbage, Cauli, Broccoli, Brussels and the like. Keep an eye on them as they develop because that horrible Cabbage Moth Caterpillar will make a mess of them otherwise. For the flower growers out there, now is just about right for the planting of Pansies, Nemesia, Linaria, the big problem is that the Petunias look so good still. There is plenty of time to plant, just wait till the Petunias start looking a little worse for wear.

Neil Muhlhan
Alinga Nursery

DRYSDALE CARPET COURT

**CARPET - VINYL
CERAMIC TILES
FLOATING WOOD
LAMINATE FLOORS**

Proprietor: Neil Petrie
Phone: 5253 1855 Mobile: 0419 519 030
63 Murradoc Road, Drysdale.

BELLARINE CHRISTIAN BOOKS and RESOURCES



- Cards
- Books
- Bibles
- Gifts
- CD's, tapes, videos
- Non-alcoholic wines

Shop 1, 8 High Street, Drysdale.
Ph: (03) 5251 3491 Fax: (03) 5251 3495



Lynette's
User-Friendly
Computers

Personalised
Tuition & Training
Ph: 5259-3963
Serving the Bellarine Peninsula

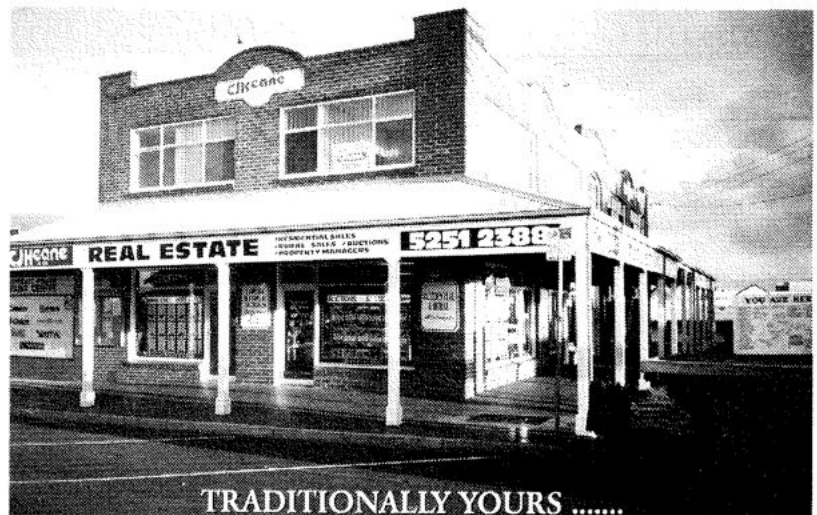
RECORD SALES CONTINUE

Due to continuing record breaking sales over recent times we are desperately short of listings in all price ranges. As a result, we have many inquiries from potential purchasers who are still waiting to buy.

We need your home to sell urgently! If you have been considering selling your property **NOW** is the time to list it for sale while prices are good and buying inquiry is strong.

C.J. Keane & Co. boasts a ten office network servicing the Bellarine Peninsula, Geelong & the Surf Coast. We offer 7 days a week service from sales staff who are part of the local community.

Contact us today for a free and confidential appraisal on your property.



TRADITIONALLY YOURS

... For more than 60 years C.J. Keane & Co has helped local residents buy and sell homes. We know your neighbourhood and what is Happening with property values. If you think That experience counts, give us a call ...

CJKeane
& CO.
5251 2388

What's on at Clifton Springs Primary School

This year will be an exciting time for science at Clifton Springs as the entire school is involved in the Science in Schools Research Project. The project aims to develop and trial a model for improving science teaching and learning and involves the school assessing the nature and purpose of our existing science programme and then developing an action plan built around a shared vision of what constitutes effective teaching and learning in science.

Assistant Principal and grade six teacher, Rob Riley is coordinating the project. With his enthusiasm and hard work there is no doubt that the children are going to benefit enormously in their understanding and experience in science.

Rob has plans for a Science Fair and Family Science nights later in the year.

Prep children enjoyed hosting an afternoon for their grandparents recently. The rooms were buzzing as the children and their visitors enjoyed sharing in activities such as computers, puzzles and games, and reading books. Each child had carefully mapped out a route of the school with interesting points to share with their grandparents. The gymnasium and the shade house were popular with the visitors. The children were astounded to hear that these were not standard in their grandparents' school days.

With the help of their parents, all students have been busy with Bunyip week activities. Food has been the focus; toffee and cake stalls seem to be perennial favourites. At the time of writing, the annual Bunyip Festival is less than a week away and promises to be huge due to the hard

work of a fine team supported by many in our school community. The Bunyip has made a couple of surprise visits to our playground at lunch time where he is overwhelmed by the children's enthusiasm. Teachers on yard duty have been impressed by the efforts of the grade one and two children who are diligently keeping the grounds clean of litter in anticipation of the festival.

The Healthy Relationships Programme is continuing this year with a different value being emphasised every fortnight and awards being presented at Monday morning assemblies to consolidate the learnings in the classrooms. The children respond well to the positive encouragement. Our assemblies are held outside by the library steps and are very well attended by parents and younger siblings.

The grade six children have been buddied with younger children to provide support in the playground. It is wonderful to see how kind and gentle the bigger ones are with their young charges as they model considerate and generous behavior.

The Before and After School Care programme is a wonderful service appreciated by many working parents and patronised by children from several schools. Parents held up by car trouble or other unscheduled events are able to ring the school and book their child in and then relax knowing they are being well supervised by the three creative and caring women who run the programme.

Mellieha Printz
Digital Full Colour Printing,
Laminating, Photocopying
and Binding Service.

Business Cards & Letterheads
Fridge Magnets,
Gift Vouchers & Tickets
Craft & Gift Tags,
Invitations, Flyers & More




Specialists in small print runs reasonable rates.
Fast quality service delivered to your door for a
quote or arrange an on site visit.
Call Tegwen Vella 1865 Portarlignon Rd
Drysdale (by appointment only)

Mob: 0401 978 979
Ph: 03 5253 1515 Fax: 03 5253 1509

BELLARINE
VETERINARY PRACTICE

2001 WINNER
Practice of Excellence
in customer Service
- National Award

Consulting by Appointment
Ph: 5253 1393
7 Palmerston Street, Drysdale




Richard Grimmitt
and Philip Christian

quality
FUNERAL CARE

Your local representatives on the Bellarine Peninsula.

Richard or Philip can be contacted
at Hepner Funeral Services
on (03) 5251 3626 or visit
www.hepner.com.au
130 Bellarine Highway,
Newcomb 3219.



Challenge - 1991 SMJ

Don't Stress
We'll Sort Out Your Mess!



BASIC
Book-Keeping

PH: 1800 645 545

Management Reports • Payroll Service • Budgeting
M.Y.O.B. Installation & Training • GST Compliance
Money Back Guarantee • Free Initial Consultation

Clifton Springs Pre-School

How quickly the weeks pass. First term is over and we are already into the holidays. The start of Kinder was all about allowing the children to settle in and find their way through a maze of new and exciting adventures and friendships. The highlight for most of the children was a visit from Easter Bunny and finding the eggs he left hidden. Thankyou to Stockdale Leggo in Drysdale for their sponsorship and helping with our "Enrolment" Sign.

Second term will see things step up a gear as the parents take off on a shopping bus tour to Melbourne's various factory outlets. This is part of our fundraising efforts for 2002. The date is yet to be confirmed for June. Limited seats are available for

anyone who would like to join in the fun, please phone the Kinder on 5251318. Meanwhile Second term for the children again holds lots of fun experiences including a visit from the Wild Action Show in June. Term one came to an end with the children closely watching a "Living Eggs" display. The children saw 10 eggs become 10 chicks in an incubator. Many questions were asked and answered about the chicks. Yet one question still and probably always will remain. "Which does come first the chicken or the egg?"



Photo of Stirling Brackley & teachers assistant Julie Brew.

Vacancies still exist for 3 year old Kinder. 3 year old Kinder can be a great stepping stone for 4 year old Kinder. Please contact the Kinder with queries.

Volunteers reviving Swan Bay wetland

Swan Bay wetland near Queenscliff will receive practical help next week by a team of volunteers from Conservation Volunteers Australia as part of Revive our Wetlands - Australia's largest national wetlands initiative.

The on-ground works are being co-ordinated by the Swan Bay Integrated Catchment Management Committee as part of their ongoing commitment to the preservation of the "internationally important" Swan Bay environment.

Since European settlement in Australia, it is estimated that more than half of Australia's wetlands have been destroyed.

Revive our Wetlands is a joint effort between Conservation Volunteers Australia and BHP Billiton to help address the degraded state of many of Australia's wetlands.

Contributing more than \$2.5 million worth of assistance and more than 14,000 volunteer days Revive will revitalise 100 of Australia most significant wetlands.

Swan Bay wetlands have been selected as one of the 100 Revive wetlands.

Swan Bay wetlands are significant because they are home to a huge variety of both native and migratory bird life.

Next week a team of "Conservation Volunteers Australia" volunteers are undertaking weed removal tasks to assist in the rehabilitation of the wetland.

Volunteers with Conservation Volunteers Australia enjoy the outdoors, meet new people and learn new skills.

2001 was the International Year of Volunteers and Conservation Volunteers Australia involved thou-

sands of Australians in practical conservation across Australia.

For an interview or to arrange footage of the volunteer team at the Swan Bay wetlands contact Conservation Volunteers Australia Geelong Regional Manager Suzanne Woolford on 0428 533 068.

Or for more information on Revive our Wetlands contact Libby McIntyre on 02 6882 5986.

INSTYLE BLINDS

QUALITY BLINDS AND CURTAINS
AFFORDABLE PRICES

- Venetian Blinds
- Vertical Blinds
- Beach Type Blinds
- Sun Screen Blinds
- Holland Blinds
- Outside Awnings
- Roman Blinds
- Curtains and Lace
- Repair & Maintenance Service

(Free measure & Quotes Shop-at-home service)

Servicing Bellarine Peninsula and the Surfcoast
48 Murradoc Road, Drysdale 3222.
Ph: 5251 1195


Investment advice you can COUNT on!

Frank Tigani of FTA Accountants is offering one FREE consultation valued up to \$150 to all new clients who come into the firm for financial planning advice prior to 30th June 2002. Frank Tigani as an Authorised Representative of Count Wealth Accountants(r), Australia's largest independent network of Accountants specialising in wealth advice, says he enjoys helping local investors build and grow their wealth. "As a Member of the Count Wealth Accountants network, I can offer clients a comprehensive range of financial services," says Tigani. "I aim to provide clients with a financial 'one-stop-shop', where they can go for their taxation, investment, insurance and business needs." Tigani says the fact that Count Wealth Accountants is free from the controlling interests of a financial product provider and uses an independent research process is very

important to clients. "As an Accountant who provides financial advice, I don't believe in 'selling' financial products to my clients on behalf of a parent company. Count Wealth Accountants is not owned by a product provider, so the products on our recommended list have been approved through a stringent, independent research process. Count Wealth Accountants specialises in researching a comprehensive range of products supplied to the market by financial product providers, and only recommends the best to clients." Count Wealth Accountants is Australia's largest Accountants-based Licensed Securities Dealer, with over 1,000 advisers in over 520 Accountancy firms nation-wide. Count strongly believes that accountants' comprehensive tax training is essential in the provision of sound financial advice. Aside from the traditional accounting services,

Frank Tigani can also provide financial planning advice, investment reviews, online stockbroking, personal insurance, superannuation advice, home & investment loans, and business loans & leasing. Tigani says the firm uses a highly service-oriented approach towards meeting clients' needs, which helps to ensure each adviser is actively engaged in providing clear, concise advice on how each client can improve his or her financial affairs. Investors who are interested in taking up the firm's offer for a free initial discussion valued up to \$150, should contact Frank Tigani on 03-5253 2992 to arrange a convenient time.

For further information: Mr Frank Tigani FTA Accountants Ph: 03-5253 2992 Count Wealth Accountants(r) is the trading name of Count Financial Limited, Licensed Securities Dealer. ABN 19 001 974 625.



18-20 HIGH ST. DRYSDALE.
OPEN 7 DAYS A WEEK
 November to April: 10am - 5pm
 May to October: 11am - 4pm
 All Public Holidays except Good Friday and Christmas day.
 New Members always Welcome
Ph: 5251 1605

**SOLICITOR
 &
 CONVEYANCING**

Basil Ristevski LL.B

5251 3453

CONCEPT CAMPERS

Manufacturers and repairers of Annexes,
 Awnings, Tonneaus, Tarps, Horse Rugs,
 Boat Covers Custom Built Camper Trailers
 Caravan and Boat Storage
 Discount for senior citizens

Phone (03) 5253 2569
61-63 Murradoc Rd. Drysdale.



**Acacia
 Pest Control**

For all your environment and
 Household pest problems.

Bee and Wasp Removal.
 Have your home treated
 For the control of:

- * Spiders * Ants * Rats * Mice
- * Earwigs * Cockroaches
- * Carpet Beetles * Silverfish
- * Clothes Moths * Fleas

Protect your family and greatest
 investment from pests.
 Up to 6 months warranty.

TERMITE CONTROL SPECIALISTS
 Licensed to treat and inspect for all timber pests.

Your local pest control bloke.
 Ph: (03) 5253 1714
 Mobile: 0404 897 783



**Drysdale
 Motors**

FOR ALL AUTOMOTIVE
 TUNING AND SERVICING

Specialising in
LPG DYNO TUNING

Have your LPG vehicle Tuned on
 a "rolling road". If your car runs
 on LPG And hasn't been dyno
 tuned Then it hasn't been tuned.

- Roadworthy Testing
- Fuel Injector Cleaning
- Air Conditioner Servicing
- LPG Conversions
- New Car Servicing

44 Murradoc Rd, Drysdale, 3222.
PHONE: (03) 5253 1033.



Lifeline Shops have a wide range of all the following items

Furniture	High quality clothing	Formal wear
Toys	Books	Accessories
Jewellery	Shoes	
Kitchenware	Electrical	

"Village Walk"
 Shops 9 & 10, 21 Clifton Springs Rd.
 Drysdale, Ph: 5253 2168

**LIFELINE ALSO SELL INDUSTRIAL RAG
 RING 5222 6418 FOR A PRICE**

SPORTS REPORT

HAWKS CRICKET VICTORY

The Drysdale Cricket Club completed a very successful season in the Bellarine Peninsula Cricket Association, with a Premiership win for both the Senior A Grade and B Grade Teams.

The A Grade Final was a fiercely contested match against Barwon Heads, with Drysdale emerging triumphant after a tough 2 days of competition. This victory is especially thrilling for the Hawks as it is their first A Grade Premiership Flag after contesting 7 losing finals over nearly 50 years.

The B Grade Final win capped off another great season, with the team being undefeated, and giving the Club a B Grade Premiership Flag three years in a row.

The Under 17 side was also undefeated during the Season and were Premiership winners.

Congratulation and commiserations to the Portarlington Cricket Club for their magnificent effort of being represented in 5 finals, but un-



fortunately missing out on any senior flags this season.

The North Bellarine Peninsula is very lucky to have to have such a wealth of cricketing talent, with the Drysdale and Portarlington Cricket

Clubs both fielding 6 senior teams each, as well as the Junior teams.

Thank you to the Cricket Clubs, the players, umpires, officials and spectators for their continued efforts and support.

Concentrating on Croquet

Croquet is a sport which in the past has been called a 'women's game', but just like everything, Croquet has become a mixed gender sport. Players such as Drysdale's Roger Richmond, who has won the GCA Division 4 Pennant, proves this fact. But it is still very much a female dominated sport which is exemplified by the brilliant croquet shown from Helen Forsyth, Claire Bird and Wilma Bath who have been past DCA champions. Are you wanting to play Croquet? The game of concentration, penetration and fun. It is a game for all ages, in fact the age bracket has widely opened from 11 to around 80 years of age. Even if you don't know how to play the game, here is your opportunity to see what all the hype is about. Every Saturday morning (10am - 12noon) through March and April, two ac-

credited coach from Drysdale, Claire Bird and Wilma Bath, can help you play the game. And it is FREE! It is the opportunity of a lifetime! There is also an opportunity to play a newly formed and fun game called Golf Croquet and Aussie Croquet. This has been introduced all over the world, and is a good game to play for fun. Come and learn how to play

at the Drysdale Croquet Club - (near the Bowling club). Competition Pennants start in September and run through to December, as Drysdale plays clubs such as Queenscliff, Colac, St Andrews and Belmont.

For more information contact:
Wilma - 52512393

Brent Diamond



**Bellarine
Hearing
Services**

**Audiologists & Hearing
Aid practitioners**

- Professional hearing assessment
- OHS accredited provider
For eligible pensioners
- Quality hearing aids

PH 5229 6407

* NOW AT DRYSDALE EVERY TUESDAY

The SpringDale Messenger

Drysdale

*Your One Stop
Plumbing Shop*

Plumbtec

Bathroom Kitchen & Plumbing Supplies

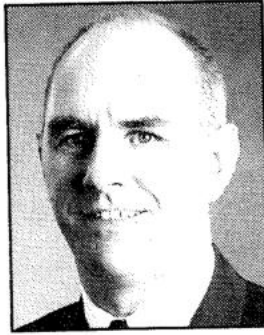


PH: DRYSDALE 52531268 GEELONG 52221268
TANKS FOR DRINKING WATER & GARDENS

Page 19



The Professionals



*Phil
Cumming*
0408 599 232



*Gabrielle
Beams*
0412 430 976



*Heather
Blair*
0417 142 516

The Investors Big Three

When consulting with an estate agent about the management of their property investments most novice investors focus on short-term return. They want maximum income, and minimum expenses. Most new investors are borrowing money and they and their managers become obsessed with immediate return because it's often crucial to the ongoing survival of the investment. Stated simply: no rent = no income = no loan re-payments = no investment.

Experienced investors have three main aims: optimum income, optimum expenses and a focus on capital appreciation. They choose an agent who will optimise their in-

come-to-expenses ratio over the long term and who has expertise to look after the big picture. When the floor coverings in an investment property need replacing, buying the cheapest carpet will certainly minimise expenses at the time of expenditure. However if the carpet doesn't wear well the saving may turn out to be less cost-effective in the long term than a carpet that was a bit more expensive but lasted twice as long.

Long term successful investors employ property investment managers rather than property managers so that long term and short term goals are merged into an overall strategy.

Capital growth is the culmination of the investor's big three and it is often overlooked by property managers with a narrow focus on management rather than investment. If investors hold their property for any length of time (which most successful investors do) capital growth becomes the most wealth producing part of the overall investment equation. Only a good property investment manager will keep the big picture in view and advise the investor about events impacting on the growth of their investment. When selecting an agent to manage their property, investors should make sure the management program includes an annual opinion of the property's selling price.

Guyett Real Estate P/L

11 Clifton Springs Road, Drysdale

5251 2847