

The SpringDale Messenger

Your Free
Community
Newspaper

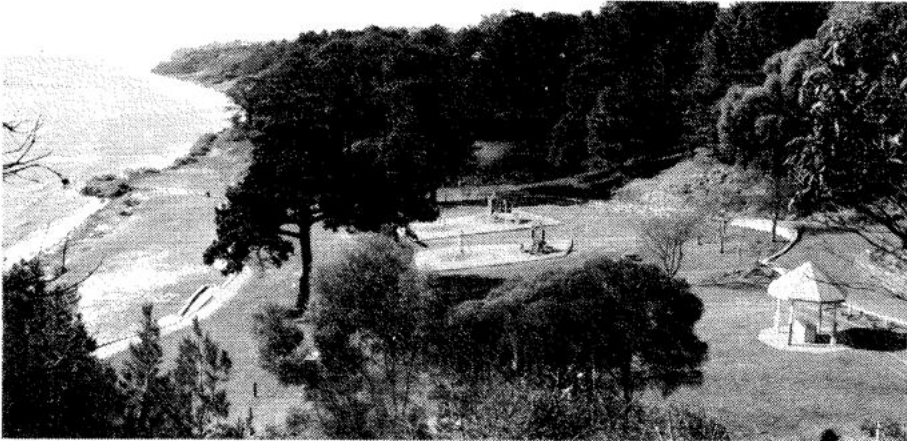
Compiled and published by the SpringDale Neighbourhood Centre Inc A002916V

Circulation 3,700

ABN 21 404 220 267

Vol 13 No.1, January 2003

Remedial works underway at The Dell



The City of Greater Geelong, through its geotechnical consultants, A. S. Miner, has completed emergency response works at The Dell in Clifton Springs, said Rob Small General Manager Environment and Recreation.

The emergency works are the first stage in a three phase plan aimed at achieving a sustainable solution for the natural erosion processes at The Dell.

The emergency works included sealing sections of the tension crack with a waterproof membrane to prevent rain and ground water from entering, pumping of existing wells on the site to reduce groundwater pressures and the development of a site safety plan.

"The works are a vital first step to ensure the safety of the site and were very timely given the recent heavy rainfalls," Mr Small said.

Following the emergency works the recorded movement data will be assessed to determine the best course of action for stage two, the short term remedial work.

"The second stage will begin in the near future and may include the installation of sub hori-

zontal drainage to further relieve groundwater pressures. Planning and design of stage three, the long term remedial work, will begin soon after," Mr Small said.

"The current monitoring results have confirmed that the landslide has remained active since The Dell was closed to the public in July 2002 and that the site remains dangerous with the possibility of a large scale failure," Mr Small said.

"But residents can be assured that the slippage is confined to The Dell itself and is a natural process related to the amphitheatre shape of the site," Mr Small said, "There is no private property under threat."

Tension crack monitors have recorded six to eight millimetres of movement at the top of the slope since late August.

Visual inspection at ground level indicates that the tension crack has dropped vertically by 300 millimetres.

Inclinometers indicate six to eight millimetres of lateral movement has occurred at a depth of up to six metres below ground level.

Surveying equipment has determined that the surface movement downslope towards the coast may have been as much as 24 millimetres since The Dell was closed.

In geotechnical terms the current rate of movement has been classified as 'very slow', but the low rainfall experienced during the last six months has most likely contributed to the slow rate of movement.

There is evidence to suggest that The Dell landslide moves in response to rainfall and that heavy or prolonged rain could accelerate the current rate of land slippage.

Telltale signs of the landslide were first noticed at The Dell in October 2001, when a large tension crack appeared on the upper slopes of the natural amphitheatre.

The current movements are part of an ongoing natural process, which has been responsible for the formation of the northern coastline of the Bellarine Peninsula.

These natural events include various types of landslide, soil erosion, surface drainage, wave action, wind erosion, sediment sifts and geological uplift and faulting.

"The Dell has a very complex geology, which is compounded by a series of groundwater springs along the shoreline. The associated high groundwater pressures play a significant role in the stability of the coast in the area," Mr Small said.

"The City of Greater Geelong and the consulting engineers are working on developing solutions to the situation at The Dell as quickly as possible," Mr Small said, "The work by necessity requires thorough monitoring before, during and after each step."

Inquiries:

Darryn Chiller Project Officer -
Media Ph: 5227 0811
dchiller@geelongcity.vic.gov.au



**DRYSDALE
VILLAGE
HARDWARE**

(03) 5251 3267

THE ARCADE
HIGH STREET
DRYSDALE, 3222.

YOUR HANDY
HARDWARE
STORE



Bank of Melbourne

- OPEN SATURDAY
- HOME LOAN CENTRE
- GOOD TERM DEPOSIT RATES

CONTACT WAYNE: 0413 133 758

**SHOP 9, SUPERMARKET
COMPLEX, DRYSDALE**

The SpringDale Messenger

The SpringDale Messenger is compiled by the SpringDale Neighbourhood Centre Inc. A0024916V, 14 Princess St. Drysdale. Postal: P.O. Box 80, Drysdale, 3222.

Editorial and Enquiries:

PH: 5253 1960. FAX: 5253 3050

To improve the administrative arrangements for the Messenger we are encouraging all contributors to provide their information on disk (Word) or email it to us – ATT Rosie on:

sprdalecc@primus.com.au. For those who have difficulty providing your contributions on disk we are still happy to accept written copy or make our computers available for your use.

Next Publication:

Copy deadline:

10th February, 2003

Distribution:

28th February, 2003.

Views expressed in this newsletter are not necessarily the views of the Publisher, the SpringDale Neighbourhood Centre Inc.

Advertising:

To ensure publication in a specific issue, copy must be submitted prior to deadline.

This includes both new adverts and alterations to an existing advert. Layout and Design of this issue by Pagation Design Services, Geelong. For any queries about advertising, please contact Anthony Zavaglia at Pagation Design Services.

Ph: (03) 5223 2494

Fax: (03) 5221 8063

springdale@pagination.com.au

BUILDER

HIA MEMBER **Paul Jones** Registered B.P.B.

Ph. 52 513934

NEW HOMES ~ EXTENSIONS ~ AIR CONDITIONING

Mobile 0419 354259

Contents	
Remedial works underway ,	Bellarine Peninsula
at The Dell 1	Railway-Drysdale 12
NEWS FROM SPRINGDALE	CLIFTON SPRINGS PRE-SCHOOL .. 12
NEIGHBOURHOOD CENTRE 3	YOUR LOCAL
Adrian E. Mannix Community	REPRESENTATIVES 13
Services Award 4	Member for Bellarine. 13
NEW COMMUNITY	What's happened and
SUPPORT GROUP 5	what's happening at the
DIABETES EDUCATION GROUP 5	CLIFTON SPRINGS GOLF CLUB 14
SPRINGDALE OCCASIONAL	BELLARINE AGRICULTURAL
CARE SESSIONS 6	SHOW 15
ATO AUDITS - Are you Ready 6	DRYSDALE CWA 16
TRAVELTALK by Lesley Judd 7	PAID IN FULL 16
SPRINGDALE BELLARINA	SPORTS REPORT 18
TOY LIBRARY 8	Portarlinton Sailing Club 18
Cycling to work benefits your	Would you like to play Netball? 18
wallet and your waistline.	DRYSDALE INDOOR
Colin Bell 8	NETBALL COMPETITION 18
BELLARINE CALISTHENICS	WANTED - TEAMS PLAYERS
COLLEGE. 9	AND UMPIRES 18
Bank of Melbourne news 10	Legends will step onto the field
Ladies' Probus Club of	in February 19
Bellarine Inc. 11	VENDORS TALK...
Free Legal Advice 11	PURCHASERS WALK 20
library line... 12	

DRYSDALE

KITCHENS

CABINETS & JOINERY

PH: (03) 5253 2774

EST. 1986

Take Control
its your choice

Take control in the face of health, relationship and lifestyle changes.

Highly experienced counsellor offers private consultations at Drysdale Community Health Centre

(tel: 5251 2291 bus. hours).

For appointments in Geelong and home visits, tel: 5253 1589 or 0411 253 644 any time.

Evening and weekend consultations available.

Your kinda loan for your kinda home.

At Bendigo Bank we understand that buying a home is a big step. That's why we offer a wide variety of home loans that provide a great rate whether fixed or variable plus extra benefits. We make sure you end up with the right loan for your home.

For more information call into 44 Newcombe Street, Portarlinton or phone 5259 3266.

Bellarine Peninsula
Community Bank Branch Bendigo Bank

Subject to terms and conditions. Fees and charges apply.
www.bendigobank.com.au Bendigo Bank Limited, Fountain Court, Bendigo, Vic. 3550. ABN 11 068 049 178 (S2630) (31/12/02)

SPRINGDALE NEIGHBOURHOOD CENTRE

Welcome to the first edition of the Messenger for 2003. As we start this New Year, please ask yourself "Is there anything SpringDale can do for me? Or is there something I can do for SpringDale?" There are a wide variety of services on offer, as can be seen from the Course Guide in this issue. Can the Messenger help you to advertise your Business or Community Group? Or would you like to get involved as a Volunteer in the Office, a member of the Committee of Management perhaps? This is a Community Facility who relies on the Community for support and we welcome your ideas for new services or activities. Please feel free to drop in to say hello, check out what we do and share a cup of coffee.

Term 1 Course Guide

The middle pages of the Messenger contain the Term 1 classes and activities. Take the opportunity to start the year learning something new, updating skills or meeting new people over a shared interest - "The power is in your hands".

Children's Services

The Occasional Care Sessions at SpringDale have again been extended, due to the popularity of this service. There will now be a morning session Monday to Friday from 9am to 12 pm, plus afternoon sessions on Wednesday & Friday 1pm to 4pm.

Jean and Sonia are trained childcare workers who will look after your child/ren while you take a break or do the shopping or ...Come and see them, or ring for more details.

The SpringDale Toy Library is a great way for children up to 6 years old to access a large range of quality toys and puzzles without the expense of purchasing. Each registered child can borrow 2 toys and 2 puzzles for 2 weeks. Consider the advantages especially if you are someone who only has children on a part-time basis, as this can be a low cost way of providing a different set of toys each visit. See inside for details of opening times.

Adrian Mannix OAM Award

Time is running out to recognize the voluntary contributions of our local community members out there, by nominating them for this Award. There is a nomination form inside so please get those entries in.

Hall Renovation Update

At this time, the people at the City of Greater Geelong advise us that Tenders have yet to be called, with the building works to take around 6 months to complete. Whilst we are all looking forward to the new development, we will just have to be patient for a little while longer.

SpringDale Office

We are currently in the process of appointing a new co-ordinator, but in the meantime Rosie, Sally and our volunteers will be happy to help you with any queries you may have.

The year 2003 is going to a big year at SpringDale - we look forward to you joining us.

*Dianne Farrimond
President*



Drysdale Motors

FOR ALL AUTOMOTIVE TUNING AND SERVICING

Specialising in LPG DYNO TUNING

Have your LPG vehicle Tuned on a "rolling road". If your car runs on LPG And hasn't been dyno tuned Then it hasn't been tuned.

- Roadworthy Testing
- Fuel Injector Cleaning
- Air Conditioner Servicing
- LPG Conversions
- New Car Servicing

44 Murradoc Rd, Drysdale, 3222.
PHONE: (03) 5253 1033.



For all your environment and Household pest problems.

Bee and Wasp Removal.

Have your home treated For the control of:

- * Spiders * Ants * Rats * Mice
- * Earwigs * Cockroaches
- * Carpet Beetles * Silverfish
- * Clothes Moths * Fleas

Protect your family and greatest investment from pests.

Up to 6 months warranty.

TERMITE CONTROL SPECIALISTS

Licensed to treat and inspect for all timber pests.

Your local pest control

Ph: (03) 5253 1714

Mobile: 0404 897 783

SpringDales Facilities

INTERNET COSTS

\$2.50 per Hour, 10 cents per page printed

PERSONAL USE OF COMPUTER

FREE, 10 cents per page printed

PHOTOCOPIES

15 cents per copy

FAX MACHINE

Local rate - *50 cents for the 1st page
*10 cents per page sent after the 1st

STD rate - *\$1 for the 1st page,
*20 cents per page sent after the 1st

Adrian E. Mannix Community Services Award

Below you will find an application form for the Adrian E. Mannix Community Services Award.

The Award is an opportunity to recognize the voluntary contribution of individuals made to residents in the local communities of Clifton Springs - Drysdale - Indented Heads - Portarlinton - St. Leonards - Wallington.

The Rotary and Lions Clubs, together with SpringDale Neighbourhood Centre have joined together to provide this Award, in memory of

the contribution made by Adrian E. Mannix O.A.M. The final winner of the award will receive a Trophy acknowledging their contribution and \$ 500-00 to donate to the charity/cause of their choice.

The person must be nominated by an individual, or organization from within the community. Finalists will be chosen and notified by the Selection Committee, consisting of representatives from the Lions & Rotary Clubs and SpringDale Neighbourhood Centre.

Applications must be received by February 10th, 2003 and the Winner will be presented at an Award Night on March 24th, 2003.

Any enquiries can be directed to SpringDale Neighbourhood Centre on 52531960.

Applications should be posted to:

**Adrian E. Mannix
Community Services Award,**
C/- SpringDale
Neighbourhood Centre,
P.O. Box 80,
Drysdale Vic, 3222.



ADRIAN E MANNIX COMMUNITY SERVICES AWARD APPLICATION FORM



Nominee: _____

Address of Nominee: _____

Telephone number of Nominee: _____

Nominee: _____

Address of Nominee: _____

Telephone number of Nominee: _____

Volunteer contributions (example: aged care, youth, CFA etc), worked performed, length and time whilst volunteering.

Details of Volunteer experience, why you believe this person deserves this award. (50 words or less).

Proudly supported by SpringDale Neighbourhood Centre.

NEW COMMUNITY SUPPORT GROUP

An exciting new resource will become available to Drysdale/Clifton Springs in February 2003. "Drysdale Family Support" will commence functioning as a support service to families, couples and individuals in the local area.

Initially, Drysdale Family Support will consist of a non-profit counselling centre, and Life Skills Seminars such as Parenting and Marriage. It is planned that a Food

Bank program will also commence in Term 2 of 2003, offering food parcels on a regular basis to those in need of assistance in this area.

Drysdale Family Support Counseling Centre aims to provide professional Christian Counselling and support to individuals, couples and families in a confidential and caring environment. The centre will be run on a non-profit basis and so seeks to offer quality care at an affordable rate.

Drysdale Family Support is an initiative of Drysdale Christian Fellowship and is in response to its vision to be a "Community Church". The centre will offer care, as it is able, to the wider community, regardless of religion, culture or belief.

Enquiries Drysdale Family Support 276-290 Jetty Road, Drysdale, 3222. Phone: 5253 2099

DIABETES EDUCATION GROUP

Why not start the New Year off well health wise and be involved in a 4 week program to learn more about your Diabetes.

By being involved over the 4 weeks you will have sessions from the Diabetes Educator, Dietitian, Podiatrist, GP, and Pharmacist.

These sessions will assist you in your management of your Diabetes.

All the latest research confirms that your management of your dia-

betes is a significant factor in preventing or delaying the onset of complications. It is not difficult (ask someone who has participated) It is suitable for newly diagnosed and those who have had Diabetes for many years. There is a lot of new information. So be active, be responsible and do a group this year. **NEXT GROUP: BEGINS TUESDAY 11TH FEBRUARY 2003**

TIME: 2PM TO 4PM.

VENUE: ANGLICAN HALL ST LEONARDS.

COST: \$5 PER SESSION FOR CLIENT/ PARTNERS OR FRIENDS WELCOME FREE OF CHARGE.

FOR MORE INFORMATION AND TO BOOK PLEASE CALL: Margaret Ahern/ Primary Care Nurse Portarlington Community Health Centre 52592537

INVESTMENT PROPERTY

Dear Landlord,

Do you want to achieve the best possible return on your investment property?

Naturally, you do! Your local

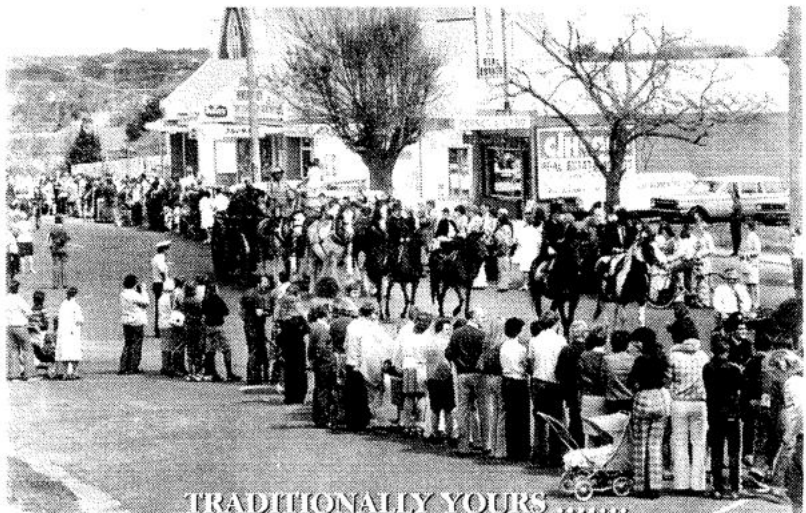
C.J. Keane & Co

office can assist you in achieving this aim by offering you the services of a Property Manager who is dedicated to protecting both the physical buildings that comprise your investment as well as the income stream that it generates.

A Property Manager who will look after your Property as if it were their own!

- We conduct a regular inspection and report back to you.
- All prospective tenants must pass reference investigations.
- Our offices are computer linked.
- Rental arrears are followed up daily.
- We regularly undertake rental reviews.
- Rental Managers regularly attend ongoing training courses to keep them up to date with management techniques and legislation.
- Rents are paid via periodical debit.
- Quick disbursement of payments to landlords.

Contact us today for a free and confidential appraisal on your property.



... For more than 60 years **C.J. Keane & Co** has helped local residents buy and sell homes. We know your neighbourhood and what is Happening with property values. If you think That experience counts, give us a call ...

CJKeane
& CO.
5251 2388

SPRINGDALE OCCASIONAL CARE SESSIONS

Monday, Tuesday, Wednesday, Thursday and Friday mornings , 9am - 12pm,
Wednesday and Friday afternoons, 1pm - 4pm

Cost: \$15 per session. Ph SpringDale or call in for more information.

ATO AUDITS - Are you Ready

In December 2002 the Australian Taxation Office released its Compliance Program for 2002/03.

The program highlights that, after three years of educating taxpayers about the New Tax System, it is now time to place more attention on audits of taxpayer's affairs.

Small to medium business will be targeted by:

- contacting one in ten businesses with a turnover of less than \$2 million, with the focus being on GST and income tax.
- Reviewing the records of 8,000 business with a turnover of less than \$2 million, and

• Questioning and following up businesses that lodged business activity statements and income tax returns with information that is inconsistent or out of line with other businesses in the same industry.

This increase in audit activity will be associated with a significant increase in ATO audit staff to assist with the process. The Compliance Program notes that in just the GST area alone an additional 350 staff will be hired.

Another area of audit activity currently being conducted by the ATO is the review of Superannuation Guarantee obligations. The

ATO have commenced this activity by mailing out notifications of possible audit activity to a number of employers. Audits will commence in February, and will examine superannuation contributions for the years ended 30 June 2001 and 2002. Audit activity will concentrate on ensuring that sufficient contributions have been made on behalf of employees, and contributions were made within the correct time frame.

So, when the ATO comes knocking, will you be ready?

Day Neilson Accountants and Advisors.

"SPREAD YOUR STRESS"

Join Now - Free Training - Have a 

*We are inviting you to join the next meeting group which is designed for employers
Of several employees.*

*The groups meet six time per year with a light lunch/breakfast and are supported
By Day Neilson staff.*

Topics can include:

- Recent Developments • Managing GST audits • Risk Insurance
- Understanding Financial Statements • Employment issues

Ring 5253 2862 now to secure your spot - P.S. The first meal is on us!

Day Neilson
ACCOUNTANTS & ADVISERS

First Floor
200 Malop Street
Geelong 3220

First Floor
72 The Terrace
Ocean Grove 3226

First Floor
6 High Street
Drysdale 3222

Suite 216
530 Little Collins Street
Melbourne 3000

TRAVELTALK by Lesley Judd

I'd always had the Kimberley on my list of 'must do' destinations, but the sheer vastness of the area made travelling this region a little too daunting. This was solved when, as one of Australian Pacific Touring Top Sellers, I earned a place on the 2002 'APT Top Achievers Kimberley Tour'.

As I'd expected, the Kimberley was vast and rugged, but APT made it all unbelievably accessible. With 25 years experience in this region, travelling with APT enabled me to not only see and experience the most remarkable and remote landscapes that Australia has to offer, but also learn the history and culture from the APT Crew and local guides. Our journey began in Darwin and ended at the spectacular Cable Beach in Broome. In between we visited and experienced some incredible locations. Kununurra was a real surprise. One of Australia's most productive agricultural areas on the amazing Ord River Irrigation Sys-

tem. Everyone's heard about it, but few get to experience it - El Questro Station - one million acres of wilderness. An overnight stay at Emma Gorge in tented cabins, dinner under the stars, and a trek through the bush to Emma Gorge, with a much earned swim when you arrive!

A scenic flight over the massive lake Argyle, and onto the Bungle Bungles. If you visit one place in the Kimberley, make it the Bungle Bungles. Amazing gorges, being serenaded in the incredible natural amphitheatre of Cathedral Gorge, and then onto the bush camp for not only incredible food but a hot shower that must be experienced! Travelling to the outback communities of Fitzroy Crossing and Halls Creek, and the amazing scenery of Geike and Windjana Gorges. And a perfect way to finish this tour is Broome.

With the spectacular Cable Beach, sensational sunsets, and the luxurious Cable Beach Resort. A great place to relax after an amazing tour,

which truly was an experience of a lifetime. Should you like more information or would like to book one of the APT Tours advertised, please call and see me or phone on 52511125.

This month we say good bye and good luck to Nicole who is going on maternity leave and we welcome Brett Robinson to our team. Brett is from Leopold and for the last few years has been travelling up the highway to our office at Highpoint Shopping Centre. Please call in and meet Brett, he may need a bit of support after being surrounded by us girls. Brett will be leading a group to Canada in June, so if you are interested pop in and he can tell you all about it.

*Annie Hommelhoff
Travel Consultant
Harvey World Travel Drysdale*



Kimberley & The Outback

10 Days Kimberley & The Top End

Darwin to Broome

This Kimberley tour has it all including two nights of luxury tented accommodation with private facilities at El Questro's Emma Gorge, and two nights' Cable Beach Club, Broome. Cruise majestic Ord River and visit Wyndham's Five Rivers Lookout. Cruise Geikie Gorge and tour the Argyle Diamond Mine. Enjoy the most extensive touring of Windjana Gorge and Tunnel Creek National Parks - Exclusive to APT. Enjoy 18 delicious meals including freedom to dine around in Broome - choose from selected restaurants and we pay the bill. Travel in luxury aboard a Mercedes benz coach with fewer seats giving you more leg room.

Price from \$3145
per person, twin share.

Also available ...
19 days from Perth
to Darwin from **\$5195.**

**EARLYBIRDS
SAVE \$300***
per couple



Ask about Kimberley Coast Cruises



21 Days Western Discovery

Highlights: • APT EXCLUSIVE!

- Cossack Adventure Cruise
- Soak in Zebedee Springs, El Questro Station
- Remote Marble Bar, the Pilbara • Monkey Mia dolphins
- Glass-bottom boat cruise, Ningaloo Reef Marine Park
- World Heritage-listed Shark Bay
- Cruise the waters of Katherine Gorge

Outstanding Accommodation: • APT EXCLUSIVE! Enjoy a night at Geraldton's beachfront Ocean Centre Hotel • Two nights at Emma Gorge (private facilities), El Questro Station and Wilderness Park

• Five nights in the Pilbara • Monkey Mia Dolphin Resort

Price from \$5495 per person, twin share.
ASK FOR DETAILS on **STAIRCASE TO THE MOON** phenomenon departure dates

**EARLYBIRDS
SAVE \$600***
per couple

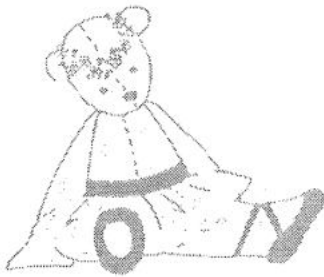


Ph: 5251 1125

Shop 2a, 6 High Street, Drysdale

HARVEY
world travel
The Travel Professionals

SPRINGDALE BELLARINA TOY LIBRARY



SpringDale Neighbourhood Centre Bellarina Toy Library

Toy Library will re-open for borrowing on Saturday 1st. February. We are open every Saturday morn-

ing during school terms between 10.30 and 11.30 a.m. If you haven't tried us before, come along and see

what we have to offer. We cater for children from birth to 6 years, with a terrific variety of fun and educational toys and puzzles for both indoor and outdoor play. Toy Library is behind the Springdale Neighbourhood Centre in Princess St., Drysdale. You don't have to be a parent to enjoy Toy Library - it's a great idea also for grandparents, carers etc.. Come and say "hi" and see what we've got! Any queries phone Kerry 52512103.

Cycling to work benefits your wallet and your waistline.

Drysdale seems a long way from Geelong on a bike but you'd be surprised how quickly you can get there and how good it feels to ride rather than drive.

A ride to central Geelong takes approximately 45-50 minutes. You can enjoy the tranquillity of the Bellarine Rail Trail, take in great views of the You Yang's across the bay and arrive at the office invigorated. There are no parking hassles or expenses and you haven't spent a cent on fuel. In fact, there is no need for a second car at all so you save on registration, insurance, running and maintenance costs and on

bus fares (excluding the occasional rainy day). By cycling rather than bussing to Geelong it is possible to pay-off a \$1000 bike in less than a year.

On the down-side, you have to ride up the Leopold Hill on the way home, it can get windy and for the sake of your workmates, it's a good idea to take a shower after your ride. However, at the end of the day you will have ridden 40 kilometres, toned your waistline without needing a gym and saved yourself some money.

The City of Greater Geelong maintains approximately 250 kilo-

metres of on-road cycleway throughout Geelong and the Bellarine Peninsula. From Drysdale you have the option of using the cycleway along Portarlington Road, or the Bellarine Rail Trail (which takes a little longer) or a combination of the two. Both options suit mountain bikes or sturdy road bikes. Why not take advantage of these great trails this summer and get on your bike to work?

The author lives with his family in Drysdale and cycles to the Deakin University Waterfront Campus most days.

Colin Bell

ALL
LIGHTING
SOLUTION

**Specializing in
Design & Sales**

- Garden Lighting
- Exterior Lighting
- Interior Lighting
- Modern and
Period Pendants
- Low Voltage Down-Lights
- Commercial Lighting
- Sports Lighting
- Flood Lighting

Shop 3/21, The Village Walk,
Clifton Springs Road, Drysdale
Phone: 5253 2666, Fax: 5253 2999

**LP ROCKET'S
DRIVER TUITION**

"Your Safety is our Business"

INSTRUCTOR - ROD SCHAMMER
(13 years licence tester with VicRoads)

- Lessons start at \$15.00 *(conditions apply)*
- Expert Tuition
- Manual & Automatic Vehicles
- Pick up from Home, School or Work
- Gift Certificates available
- Covering Geelong & the
Bellarine Peninsula
- Member of the Professional Driver
Trainers Association of Victoria

**For further information phone:
5248 3994
or 0419 802679**

ANZ
DRYSDALE

COVERS ALL YOUR BANKING NEEDS:

- HOME LOANS
- PERSONAL LOANS
- TRANSACTION ACCOUNTS
- SAVINGS ACCOUNTS
- INVESTMENTS
- SUPERANNUATION
- INSURANCE
- ATM FACILITY

and much more....

*We also provide a free, no obligation
Financial Advice service.*

**Call in and see Annette, Kathy,
Nadia and Jean today at:
Shop 4, 3 Wyndham St, Drysdale.**

BELLARINE CALISTHENICS COLLEGE.

Celebrating 10 years !!!

Located in Drysdale, the Bellarine Calisthenic College will, in 2003, celebrate its.....10th. Birthday!!

Our well established College has, since 1994, endeavoured to create teamwork and participation through fun activities and healthy competition principles. Calisthenics enables pupils the opportunity to experience a range of activities within the one sport including - Dance, Singing, Acting, Exercise, Flexibility.

Calisthenics is a competitive team sport, which involves teams of pupils learning exercise and dance routines. Approximately 4 - 6 routines are learnt currently through out the year. The variety of disciplines within Calisthenics makes the sport so appealing: Dance, singing, gymnastics, exercise, ballet and above all the joy and fun associated with performing on a stage!

What are the benefits?

* Fantastic for co-ordination and body awareness. Promotes a healthy body and mental fitness. * Being part of a team develops self-discipline, teamwork, commitment, responsibility and self-esteem. * Combinations of movement and per-

formance skills provides rhythm, grace, deportment and confidence. * Calisthenics promotes a healthy lifestyle and lasting friendships!

Pupils range from 3 years to 30+++! Training takes place once a week, and from mid-July to mid-September/October the College participates in Team Competition - locally in Geelong, State Titles in Melbourne and at the prestigious South Street Competitions in Ballarat.

Over the years that the College has been operating, teams have received numerous awards for their efforts, including many 1st. placings and Competition Aggregate trophies. A number of our pupils have also successfully undertaken Pupil Skills Exams on an individual basis receiving Credits and Honours.

Every effort is made to ensure that the cost of sending a child to Calisthenics is as affordable as possible. The College is run on a non-profit basis with fees set each year to cover the anticipated running costs for that year.

CLASSES FOR 2003 COMMENCE IN FEBRUARY AND WE ARE NOW ACTIVELY RECRUITING NEW PUPILS TO JOIN OUR FRIENDLY AND SUCCESSFUL TEAMS.

Qualified, registered and experienced Coaches conduct all lessons - the Principal, Joanne Eaton has been actively involved in Calisthenics for 30 years - 22 of those as a Senior/Principal Coach.

SO....

COME AND JOIN US IN 2003 !!!!!
ENROLMENT NIGHT- Tuesday 4th. February - 5.00- 7.30pm.

Drysdale Uniting Church Hall, High St Drysdale (enter from car park at rear of Church)

CLASSES COMMENCE THURSDAY 6th. February

JUNIORS 12yrs and under 4.30-6.30pm.

INTERMEDIATE 16yrs and under 6.30-8.30pm

TUESDAY 11th. February

TINIERS 7yrs and under 4.30-5.30pm.

SUB-JUNIORS 9yrs and under 5.30-7.30pm.

SENIORS 16yrs. and over 7.15-9.30pm.

FOR FURTHER INFORMATION- ENQUIRIES CONTACT.....

Joanne 52554837

or 0408 329 047

Nicole 52533324 (after 5pm.)

Naturopath

Lisa Taylor N.D. (A.N.T.A.)

**Drysdale
Naturopathic Centre**
(in Bodytonic)

Tues., Thurs. & Fri.
9.00am - 5.00pm
appointments ph: 5253 2510

Also available at
Carmoor Clinic, 343 Moorabool St.
Wed. & Mon., Ph 5223 2616

Specialising in women's and children's health using Herbal, Homoeopathic and Soft Tissue Therapies.

peggy Lane

Patchwork &
Stamping

We invite you to come and see our exciting new shop which opened on....

20th January 2003

- Wide range of patchwork fabric
- Patchwork & quilting supplies
- Beautiful rubber stamps, cards, paper & all your stamping requirements
- Haberdashery

Shop 3, 24 Dorothy Street,
Leopold Ph: 5250 5977

The only Funeral Directors
Permanently situated on the
Bellarine Peninsula.



**DRYSDALE
&
PENINSULA
FUNERAL SERVICES**

Committed to Caring

PHONE: 5251 3477
24 hours - 7 days

Bank of Melbourne news

There are strong indications of a growing real estate market in the Drysdale/Clifton Springs area with an increasing number of locals visiting the Bank of Melbourne In-store to arrange home loans in the last six months.

Bank of Melbourne's In-store business partners are local business people Wayne and Lisa Elliott. The In-store is open from Monday to Friday, as well as Saturday mornings which is particularly popular with local customers as in addition to day to day banking services, Wayne provides advice to anyone wishing to apply for a home loan.

"We've seen steadily growing interest in new home loans from locals since July last year, which is an encouraging sign regarding the health of the local housing market," said Wayne.

"People particularly like the fact that they can drop by the In-store and have a chat regarding their options for home loans, or sometimes they give me a ring to set up a time and I drop by their place."

To see Wayne about a home loan contact him on 0413 133 758 or drop by the Bank of Melbourne In-store at the Safeway complex in Drysdale.



Bank of Melbourne 

Things you should know: Information current as at 10 January 2003. Any application for credit is subject to Westpac's normal lending criteria. Bank of Melbourne (a division of Westpac Banking Corporation ABN 33 007 457 141). GDA23186



Lynette's
User-Friendly
Computers

Personalised
Tuition & Training

Ph: 5259-3963

Serving the Bellarine Peninsula

Chui Yuan
Chinese Restaurant
(B.Y.O.)



TAKE AWAY & HOME DELIVERY
FUNCTIONS & GROUP BOOKINGS A SPECIALTY
QUALITY & CLEANLINESS ARE PARAMOUNT
REASONABLE PRICES
* \$6.50 (TAKE AWAY LUNCH SPECIAL)

Ph. 5253 1788

Shop 5, 26-28 High St. Drysdale, 3222.

BELLARINE FENCING Co

For all your fencing
& gate needs,
- Picket - Paling -
Heritage Wire.

Phone: Andrew & Gayle Baylis
on 5251 3090 or 0417 544 887

**ELECTRICIAN
Terry Parsons**

REC 12985

- * Hot Water Services
- * Safety Switches
- * Bathroom Heaters
- * Stove Repairs
- * Telephones
- * Air Conditioners installed
- * Emergency Repairs

0412 157 842 AH: 5259 3100

Robert Tucker Piano Services
C/- Tuckerberry Hill.

Qualified Piano Tuner
and Member of Piano Tuners and
Technicians Guild of Australia.
Tuning, Regulation,
Restoration and Repairs.

Phone: 5253 3438

**Matilda's
PINE & COUNTRY
FURNITURE**

- ◆ Specialists in Country Pine Furniture
- ◆ Factory in Geelong

Gifts, Furniture and Collectables

169 Melbourne Road
NORTH GEELONG
(Cnr Victoria Street)
PH: 5272 2275

16 Collins Street
DRYSDALE
(Next to Hotel)
PH: 5253 1516

Springdale Neighbourhood Centre

Human
Services



COURSE GUIDE TERM 1 - 2003

Address: 14 Princess Street, Drysdale

Phone: 5253 1960

Fax: 5253 3050

Email: sprdalecc@primus.com.au

Opening Hours: Monday - Thursday 9:30 am - 3:30 pm

Friday 9:30 am - 1:00 pm



Adult Education in
the Community

Your Local Learning Centre.

Educational, Leisure, General Interest Programmes Learning Can Be Fun!!

ENROLMENT & PAYMENT INFORMATION

Enrolment

- To book into a class, call in person to SpringDale Neighbourhood Centre, 14 Princess Street, Drysdale or Phone 5253 1960.
- If you hold a current Concession or Health Care card you will receive a 5% discount on full course fees.
- Your enrolment is confirmed when payment is received.
- Should a class be cancelled due to lack of enrollments or another reason, fees are refunded in full and enrollees notified by phone.
- People wishing to withdraw from a course must do so prior to commencement of the course.

- Where fees have been paid a refund will be issued with an administrative fee of \$8.00 deducted.

- Where a person withdraws after commencement of a course no refund will be issued.

Payment

- Classes must be paid for no later than one week prior to the commencement of class.

- Credit card facilities are available for payment.

- Payment can be made in person at SpringDale or by phone.

1. Class: _____

Time: _____ Date: ____/____/____ Venue: _____

2. Class: _____

Time: _____ Date: ____/____/____ Venue: _____

I am paying the amount of \$ _____ by:

Cheque/Money Order payable to: SpringDale Neighbourhood Centre

Bankcard/Visa/Mastercard No: ____/____/____ ____/____/____ ____/____/____ ____/____/____

Expiry Date: ____/____/____ Cardholder Name: _____

Signature: _____ Receipt Required?: Yes No

HEALTH & WELLBEING

'BE ALERT IN A SKIRT

- HOME SAFETY FOR WOMEN SEMINAR

Womens Protection Programs have a holistic approach to women's protection issues. The aim is to provide a nurturing environment, encouraging women to gain confidence in areas of self-protection.

Home safety for women covers women's issues in the area of fear whilst alone; sleeping with safety, how to deal with prowlers (known or unknown), prank phone calls as well as practical inexpensive methods of improving the security of your home.

In this class, Michaela addresses specific women's safety concerns with compassion and will teach simple effective methods of safeguarding yourself and your home.

Michaela is a qualified black belt martial arts instructor. She is well known for her commitment to women's safety issues and delivers her unique programs with warmth and sensitivity.

Date: 13th March (Thursday)

Time: 6.30-9pm (1 session)

Tutor: Michaela Neu

Fee: \$20

Venue: Springdale Neighbourhood Centre (Child Care Room)

BULLY EDUCATION FOR PARENTS

Bullying in you and your child's life - A guide for parents and children to deal with aggressors and manipulators, both in the world of the adult and child. Encourages the relationship between a parent and child by discussing issues in the area of bullying, while offering practical and effective solutions.

Date: 27th March (Thursday)

Time: 6.30 - 9.30pm (1 session)

Tutor: Michaela Neu

Fee: \$20

Venue: Springdale Neighbourhood Centre (Childcare Room)

YOGA

Experience balance and harmony of mind, body, emotions and spirit. Exercise through breathing, stretching and relaxation. Mats for Yoga can be purchased from shops like The Reject Shop.

Date: Monday, 10th February - 7th April (excludes 10th March)

Time: 11.00 am - 12.30 pm (8 sessions)

Fee: \$72

Venue: Portarlington Guides Hall, Sproat Street, Portarlington

Tutor: Glenda Breedveld

Materials: 1 Rubber Mat

Date: Thursday, 13th Feb - 10th April

Time: 6.00 pm - 7.30 pm (9 sessions)

Fee: \$82

Venue: Bellarine Peninsula Community Health Centre, 21 Palmerston Street, Drysdale

Tutor: Glenda Breedveld

Materials: 1 Rubber mat

Date: Thursday, 13th Feb - 10th April

Time: 7.45 pm - 9.15 pm (9 sessions)

Fee: \$82

Venue: Bellarine Peninsula Community Health Centre, 21 Palmerston Street, Drysdale

Tutor: Glenda Breedveld

Materials: 1 Rubber mat

Waiting Lists apply

TAI CHI

Tai Chi- Intermediate

A gentle, relaxing exercise program. If you have completed one term of sun style tai chi, then this class will be suitable for you.

This form is also highly recommended for those who suffer from arthritis. Taught by a trained instructor.

Date: Monday, 10th Feb - 7th April

(excludes 10th March)

Time: 6.30 pm - 7.30 pm (8 sessions)

Fee: \$72

Venue: Bellarine Peninsula Community Health Centre, 21 Palmerston Street, Drysdale

Tutor: Sue Simpson

BELLY DANCING

Level 1

An easy fun class where you learn basic movements and simple choreography - great for fitness too!

Date: Thursdays 20th Feb-10th April

Time: 6.30 pm - 7.30 pm (8 sessions)

Fee: \$50

Venue: St James Church Hall (next to Anglican Church in Collins Street)

Tutor: Natasha Dean

Level 2

Further develop movements and techniques to build on skills previously mastered.

Pre-requisite: at least one term in Level 1

Date: Thursdays 20th Feb-10th April

Time: 7.45 pm - 8.45 pm (8 sessions)

Fee: \$50

Venue: St James Church Hall (next to Anglican Church in Collins Street)

Tutor: Natasha Dean

FIRST AID

First Aid - Level 1

Participants who complete the module successfully will be competent in managing life threatening emergencies at home, leisure or in the workplace.

Date: Monday, 17th - 24th February

Time: 6.30 pm - 9.30 pm (2 sessions)

Fee: \$70

Venue: Springdale Neighbourhood Centre (Child Care Room)

Tutor: National First Aid

First Aid - Level 2

An Accredited Certificate, valid for 3 years (with CPR updates) required in many courses and work places. Covers all modules taught in Level 1 plus additional emergency treatment and management procedures.

Subsidised places for Level 2 are available to: Jobseekers (centrelink registered), 'Not for profit' community agency volunteers and students enrolled in accredited vocational courses.

Date: Monday, 17th Feb - 24th March

Time: 6.30 pm - 9.30 pm (6 sessions)

Fee: Full fee - \$135

Subsidized - \$70

Venue: Springdale Neighbourhood Centre (Child Care room)

Tutor: National First Aid

CPR Update

(Cardiopulmonary Resuscitation)

Summer is here. This means water and children. Don't wait until it's too late. Learn CPR today. (It is recommended that CPR updates are undertaken annually).

Date: Monday, 17th February

Time: 6.30 pm - 9.30 pm (1 session)

Fee: \$35

Venue: Springdale Neighbourhood Centre (Child Care Room)

Tutor: National First Aid

General Interest and Skills

GENEALOGY

- For beginners

Learn the skills required to successfully track your ancestors. An informative journey with the very skilled and knowledgeable tutor and historian, Suzie Zada.

Date: Friday, 21st Feb - 28th March

Time: 10 am - 12 noon (6 sessions)

Fee: \$85

Venue: Springdale Neighbourhood Centre, Drysdale

Tutor: Suzie Zada

GREEN GARDEN TIPS (MORE OF)

FOR THE BACKYARD GARDENER

This interesting session will cover areas such as composting, mulching, vegie and flower growing. Bill Nicholson will take you 'back to basics' to create a productive healthy garden for you and your family to enjoy.

Date: Wednesday, 12th March

Time: 10.30 am - 12.00 noon (1 session)

Fee: \$15

Venue: Springdale Neighbourhood Centre, Drysdale

Tutor: Bill Nicholson

THE DREAMING EYE

- DREAM INTERPRETATION

Have you ever wanted to know more about your dreams? Here is a course that will help you understand them; especially the phenomena of the recurrent dream. If you want to know how to analyse or interpret dreams in a systematic way and have an ongoing record of them, join this class. It may even help you understand yourself better!

Date: Tuesday, 18th Feb - 8th April

Time: 7.00 pm - 9.00 pm (8 sessions)

Fee: \$100

Venue: Springdale Neighbourhood Centre

Tutor: Dr Trevor Irwin

JOURNAL WRITING

Writing in an atmosphere of support and encouragement. Explore the ways in which a journal can be used. Is suitable for both beginner and confident writers.

If you have a desire to explore creative journal writing - then this is the class for you. The only pre-requisite is a willingness to share with, encourage and support other writers.

Date: Monday, 10th Feb - 7th April

(excludes 10th March)

Time: 10 am - 12 noon (8 sessions)

Fee: \$85

Venue: Springdale Neighbourhood Centre

Tutor: Elaine Hurst

AN INTRODUCTION TO POETRY

This will be a great opportunity to learn the basics of poetry in a clear, uncomplicated way. Learn that poems are another way of saying important things about our lives.

Like the human body, they have key elements that work towards the overall functioning and effect of the whole poem. Enrich your life through this cultural opportunity.

Springdale is looking for expressions of interest for this course in Term 2.

If you are interested then please give us a ring on 52531960 to register your name.

IMPROVING BUDGET SKILLS FOR WOMEN

Women often have the responsibility for the family finances. This can be a huge challenge. This session will be a plain English discussion on finance for any woman - single or with a family. Topics will include the role of budgeting, saving dollars for fun and any other appropriate areas. Free Tea and Coffee and biscuits

Date: Wednesday, 26th February

Time: 7.00 pm - 9.00 pm

Fee: \$5

Venue: Springdale Neighbourhood Centre, Drysdale

Tutor: N. Trevhella

ALTERNATIVE HEALING

AND PSYCHIC DEVELOPMENT

A course for personal growth and awareness. This fascinating and informative course will cover the following areas. Colour therapy, Aromatherapy, Meditation, Tarot and Runes, Crystal therapy and Guided drawing.

A more comprehensive course outline is available on request.

Date: Wednesdays 5th March- 9th April

Time: 7.00 pm - 9.00 pm (6 sessions)

Fee: \$90

Venue: Springdale Neighbourhood Centre, Drysdale

Tutor: Lisa Baker

BIBLE WITHOUT BAGGAGE

-Where did it come from? What's in it? How can I understand it for myself? The bible is a best-selling book that has had and continues to have a significant influence on world religions, politics, music, art and literature. Come and learn about it without the hassle, pressure or expectations of going to a church. Subject to time, additional information about participants' special areas of interest may be included.

Commences:

Date: Monday, 17th March

Time: 7.30 pm

Fee: \$20 (3 sessions) to be paid to tutor

Venue: Springdale NHC

Tutor: David Wanstall

Bookings and enquiries on 5253 2464

ARTS & CRAFTS

VICTORIANA ANGEL

- APPLIQUE FOR BEGINNERS

Create a patchwork cushion or wall hanging. Creative, crazy patchwork suitable for beginners. Use up those scraps of exotic fabrics eg. Satin, velvet, damask or embossed pieces and decorate with bits of lace buttons embroidered stitchery and charms.

A machine or hand sewn project. All you need to have is a basic knowledge of quilting for this project. Come and learn folded and ruched flowers and hand appliqué techniques.

Date: Monday, 17th March - 7th April

Time: 10 am - 12 noon (4 sessions)

Cost: \$50

Venue: Drysdale Hall, High Street, Drysdale

Tutor: Gloria Stead

Material list available from Springdale

BAG MAKING WORKSHOP

Make bags in a creative way using basic sewing skills, helped by two experienced tutors.

Make a 35x42cm bag in 3 hours. (Useful for A4 folio, shopping bag or library bag.)

Basic Sewing Skills Required

Date: 5th March (Wednesday)

Time: 9.30-12.30 (1 session)

Cost: \$22

Venue: Springdale NHC

Tutor: Lorraine Cole and Jenny Lester Smith

Materials List at Springdale

WATER COLOUR

-All Levels Welcome

An opportunity to begin a new interest or to develop your skills further. Our experienced tutor will guide you in further developing your artistic skills and abilities in a friendly and welcoming environment.

Date: Tuesday, 25th Feb - 8th April

Time: 10.00 am - 12.00 pm (7 sessions)

Fee: \$72

Venue: Springdale Neighbourhood Centre

Tutor: Brian Close

(Materials list available at Springdale)

THE ART OF DRAWING

Learn basic drawing skills using pencil and charcoal. Explore your creative side in a friendly and supportive environment with our experienced tutor.

Date: Tuesday, 25th Feb - 8th April

Time: 1.00 pm - 3.00 pm (7 sessions)

Fee: \$72

Venue: Springdale Neighbourhood Centre

Tutor: Brian Close

(Materials list available on booking).

PAINTING WITH PASTELS

Pastels are one of the fastest growing mediums.

This program will look at how to use pastel, types of paper, tonal values, how to use a color chart, shape and color therapy.

No prior knowledge is required.

Come and enjoy the journey with our wonderful tutor and local artist - Jenny.

Explore and enjoy your creative side.

Date: Thursday, 27th Feb - 10th April

Time: 10.00 am - 12.00 pm (7 sessions)

Fee: \$72

Venue: Springdale Neighbourhood Centre,

Tutor: Jenny Lester Smith

(Materials list available at Springdale).

PAINTING WITH OILS

Will cover the basic techniques of using oils paint and turpentine mediums and nurture all styles of students painting skills. Students will be assisted to paint their own favourite subject matter (still life or landscape, abstract or art as therapy. No prior art skills required.

Date: Thursday s 27th Feb-10th April

Time: 1-3pm (7 sessions)

Fee: \$72

Venue: Drysdale Hall, High St Drysdale

Tutor: Jenny Lester Smith

(Materials list available at Springdale)

Painting with Acrylics

Learn the basics of acrylics, what acrylics can do in comparison to oils. By learning principles and techniques, students will develop and be nurtured in their own styles. Acrylics are non-toxic and easy to use. Come and learn a new skill or hone your existing skills in a friendly and supportive environment.

Date: Wednesdays 26th Feb-9th April

Time: 1-3pm (7 sessions)

Cost: \$72

Venue: Drysdale Hall, High St Drysdale

Materials: List at Springdale

COMPUTER CLASSES

Introductory funded classes are designed for beginners just starting off on their learning about the uses and functions of the computer, Internet and E-mail. You will be guided in Microsoft Word and Windows. Topics will include mouse control, open/close applications, cut, copying, pasting, inserting/deleting and much more. On completion of this course

eligible students will be entitled to 5 hours of free Internet access at participating centres. Subsidized places are funded through ACFE (Adult Community & Further Education) and are available for those seeking re-entry into the workplace, the unemployed and those over 55 years of age.

COMPUTER BASICS

at PORTARLINGTON

Date: Mondays, 17th Feb - 7th April

Time: 4.00 pm - 6.00 pm (8 sessions)

Fee: Full course fee: \$95.00

Subsidized: \$50.00 (\$40 + \$10 amenities)

Venue: Portarlington Community Health

Centre, Fenwick Street, Portarlington

Tutor: Lyn Brooke

COMPUTER BASICS

for OVER 55's

Includes Internet and email

Date: Tuesdays, 18th Feb - 1st April

Time: 9.30 am - 12 noon (7 sessions)

Fee: Full course fee: \$95

Subsidized: \$50 (\$40 + \$10 amenities)

Venue: Springdale Neighbourhood Centre,

Princess St, Drysdale

Tutor: Lyn Brooke

or

Date: Tuesday, 18th Feb - 1st April

Time: 1.00 pm - 3.30 pm (7 sessions)

Fee: Full course fee: \$95

Subsidized: \$50 (\$40 + \$10 amenities)

Venue: Springdale Neighbourhood Centre,

Princess St, Drysdale

Tutor: Lyn Brooke

COMPUTER BASICS - GENERAL

Includes Internet and email

Date: Thursdays, 20th Feb - 3rd April

Time: 6.30 pm - 9.00 pm (7sessions)

Fee: Full course fee: \$95

Subsidized: \$50 (\$40 + \$10 amenities)

Venue: Springdale Neighbourhood Centre,

Princess St, Drysdale

Tutor: Lyn Brooke

Or

Date: Thursdays, 27th Feb - 10th April

Time: 9.30 am - 12 noon (7 sessions)

Fee: Full course fee: \$95

Subsidized: \$50 (\$40 + \$10 amenities)

Venue: Springdale Neighbourhood Centre,

Princess St, Drysdale

Tutor: Sue Ashby (Lara Computers)

COMPUTERS

- THE NEXT STEP

Intermediate - Microsoft Word

This class is the follow-on from our introductory course. Topics covered include the finer points of working in tables, aligning text, merging cells, putting in images doing a mail merge and any queries from participants. Basic computer skills required.

Date: Thursday, 20th Feb - 13th March

Time: 1.00 pm - 3.00 pm (4 sessions)

Fee: \$85

Venue: Springdale Neighbourhood Centre,

Princess St, Drysdale

Tutor: Sue (Lara Computers)

PUBLISHER

(Introduction)

This popular course continues to build on skills touched on in introductory classes.

Learn more about text and picture tables, overlapping pictures, cropping, aligning and much more. This class is also offered for those aspiring would-be graphic artists, who like to make their own flyers, brochures, Christmas cards, invitations etc.

Basic computer skills required.

Date: Friday, 7th March - 28th March

Time: 9.30 am - 12 noon (4 sessions)

Fee: \$85

Tutor: Lyn Brooke

DISCOVER THE INTERNET & EMAIL

Date: Friday, 21st Feb - 28th Feb

Time: 9.30 am - 12 noon (2 sessions)

Fee: \$20

Tutor: Lyn Brooke

Or

Date: Friday, 4th April - 11th April

Time: 1.00 pm - 3.30 pm (2 sessions)

Fee: \$20

Tutor: Lyn Brooke

SpringDale Neighbourhood Centre, through the support of Vicnet, is funded to provide Internet training and access to the local community. Eligible participants will become members and will become eligible to receive 5 hours of Internet access time at the Centre (free-of-charge) after completing the course.

DIGITAL IMAGING

An overall introduction to the latest Digital Imaging Technology and how to apply them. Topics will include digital theory, computer systems, digital input (scanners and cameras) image editing software and digital output (printers, film recorders etc.)

Emphasis during this course will be on practical demonstrations and hands on practice. Experience with computers and Windows software is desirable.

Date: Tuesdays 4th March - 1st April

Time: 7-9pm (5 sessions)

Fee: \$78

Tutor: Terry Oakley (The Picture Source)

Venue: SpringDale

LEARN TO USE YOUR DIGITAL CAMERA

(WORKSHOP)

Now is your chance to learn how to use that camera you got for Christmas! A straight talking, practical session to answer the questions you are unsure about. Bring your camera along and learn to enjoy the art of digital photography.

Date: Wednesday 19th Feb

Time: 12.30-3.30pm (1 session)

Fee: \$30

Tutor: Terry Oakley (The Picture Source)

Venue: SpringDale

CHILDREN'S PROGRAMS

MUSIC AND MOVEMENT

Enjoyment of music, dance and song to encourage the development of beat, rhythm, tempo, pitch and harmony - all while having fun. This is a great way for little ones to develop confidence, self-esteem, concentration, memory, listening, language and self-expression.

Date: Tuesday 11th February-8th April (9 sessions)

Time: 9.15 am - 10.00 am 2 & 3 year olds

10.15 am - 11.00 am 3 - 5 year olds

Fee: \$50 per term

Venue: Drysdale Hall, High St. Drysdale

Tutor: Trish Redman

Occasional Care

Three-hour sessions enable parents to take a break, undertake a class, do shopping etc. It also gives your child an opportunity to socialize and play with other children in a supervised program with qualified staff.

Sessions are:

Monday, Tuesday, Wednesday, Thursday and Friday mornings:

9.00 am - 12.00 pm

Wednesday and Friday afternoons:

1.00 pm - 4.00 pm

Fee: \$15.00 per session

Special rates apply to families with more than one (1) child attending and those attending a class at the Centre.

Bellarina Toy Library

The Toy Library is open Saturday mornings 10.30 am to 11.30 am.

We have some fantastic toys to borrow (ages 0 - 6 years) so come along and see what we have to offer!

SPECIAL INTEREST GROUPS

Weekly Craft Groups

Opportunities to meet people, learn new crafts, or teach others your speciality.

Meet weekly during school terms.

Cost is \$5.00 (one off registration) \$2.00 per week. New members welcome.

Ring SpringDale for more details.

Sew & Sews

(Wednesday Morning Group)

10:00 am - 12:00 noon (Child care available)

Whichcraft

(Wednesday Afternoon Group)

1:00 pm - 3:00 pm

Friday Afternoon Craft Group

1:00 pm - 3:00 pm (Childcare available)

Springdale Friendly Patchwork and Quilting Group

The aim is for interested, like-minded people to bring along their current works (or any unfinished projects), then to simply get together and help one another in a friendly atmosphere.

Meetings will take place on the second Thursday of the month.

Venue: SpringDale Neighbourhood Centre

Time: 10.00 am - 12.00 pm

Dates for Term 1: 13th Feb, 13th March, 10th April

SpringDale Singers

A mixed voice choir meeting on Tuesdays from 1:30 pm to 3:30 pm in the Drysdale Community Hall. New members welcome.

Persons interested may come as visitors on any Tuesday.

Returns first week in February

Writers Group

This group meets the second Thursday of each month 1:00 pm - 3:00 pm at SpringDale Neighbourhood Centre, 14 Princess Street, Drysdale.

Dates for Term 1: 13th Feb, 13th March, 10th April

New members welcome.

Ring SpringDale for more details.

Queenscliff & District Woodworkers

Meet first and third Monday of the month at 2:00 pm at Drysdale Community Hall, High Street, and Drysdale.

New members welcome. Just turn up if you are interested.

Enquiries to the Secretary, Ray Roberts, Tel: 5251 2183.

Belly Dance Group

Come along and enjoy an informal dance group.

When: Tuesday 1-2pm

(3 Tuesdays per month)

Classes commence: Tuesday 11th Feb

Fees: \$5 per session

Group Instructor: Jenny Bond

OTHER SERVICES

SpringDale also provides facilities to the public which include:

- > Computer access (when classes are not using computer room)
- > Internet & E-mail access
- > Photocopying
- > Faxing
- > Hall and room rental

Please call SpringDale for further information on the above.

Happy New Year to all our members and readers of the Messenger.

We had a lovely time at our Christmas Luncheon at the Springs. Everything to eat was delicious, hot and plenty of meat. I am a meat lover, so it is never too much for me. Eva Fraser was last being served her main course, and no sooner had she the plate in front of her, the entertainment group were requested to start singing the carols, of which Eva was a participating member. The main course was returned to the kitchen to keep warm! Instead when the choir had finished their first bracket of carols and Eva requested her meal, a fresh meal was placed in front of her, which she tucked into before the choir were to sing again. The choir sang four carols, the selection was left to Rhena who chose traditional Carols with audience participation, as well as an Australian carol, and one not so well known. The choir were members of several groups, Springdale singers, and the Drysdale Ladies Probus Club, and our own Club. I must add that

the organist (keyboard) player was from the local church of St. James. Vera Mills said she enjoyed the food and the company, and went home to have a good sleep.

Diary Events.

Portarlington Friendship Day. Feb.18th. Mystery Trip. Friday 21st. March.

The Vice President Bev is already searching the membership for ladies to become aware of the need to take part in becoming a committee member for the next committee 2003. It is always good fun, and quite easy to make new friends.

Faye and Margaret will be doing their double act at the January meeting, talking on their experiences in England and France. That should be interesting.

One of our foundation members, Margaret Callaghan who left the club recently is moving to Melbourne to live near her family. Sylvia Cowan has settled in Tasmania, and is keeping in touch. Bruce and Jennifer Barker are in partnership with one

other GP, and loving it over there in Tasmania.

To those members who are sick, or have a family member sick, take care.

Cottage by the Sea. Our members donated throughout the year a small change collection. The club sent a cheque to the Cottage to assist in providing items for the children. The dedication of the staff to help these children in need is satisfying to see.

Yours in friendship.
Iris Liz Tolton.

Frank Burge Cars

KEITH PURCELL
or
DAVID GALLOP

Phone: 5222 1606
Fax: 52218608
Mobile: 0418 554 011
172 Fyans Street,
South Geelong 3220

Free Legal Advice

Victorian Legal Aid has started a free legal advice and referral service at the Ocean Grove Neighbourhood Centre every Tuesday Morning from 9.30am. All legal matters including family law. For your free 30 minute appointment, please telephone Victorian Legal Aid on 5229 2211.

INSTYLE BLINDS

QUALITY BLINDS AND CURTAINS
AFFORDABLE PRICES

- Venetian Blinds
- Vertical Blinds
- Beach Type Blinds
- Sun Screen Blinds
- Holland Blinds
- Outside Awnings
- Roman Blinds
- Curtains and Lace
- Repair & Maintenance Service

(Free measure & Quotes Shop-at-home service)

Servicing Bellarine Peninsula and the Surfcoast
48 Murradoc Road, Drysdale 3222.

Ph: 5251 1195

BELLARINE AUTO SERVICES

Quality Mechanical Repairs
Tuning - Servicing
LPG Conversion - EFI
Tyres - Batteries - RWC
Licensed Vehicle Testers

Mortimer St. Drysdale
Proprietor: J. Pamplin

Ph. 5253 1644

BELLARINE CHRISTIAN BOOKS and RESOURCES



- Cards
- Books
- Bibles
- Gifts
- CD's, tapes, videos
- Non-alcoholic wines

Shop 1, 8 High Street, Drysdale.
Ph: (03) 5251 3491 Fax: (03) 5251 3495

library line...

A free China Painting demonstration and information session will be held in the Drysdale Library next month. Local talented artist, Cheryl Murray will be presenting this on Wednesday 12th February, 2.30-3.30 Please come along to see samples of Cheryl's work and discover how to create your own feature plates, vases and other pieces. Phone 5251 3855 for bookings or enquiries.

The Regional Library Home Page can be found at <http://www.ipac.geelonglibraries.vic.gov.au> As well as being able to search the Catalogue from home its features include being able to place Hold Requests, renew borrowed items, and create Booklists. Get your personal PIN number from the Library Loans Desk

Happy reading

Faye Munro Branch Team Leader - DRYSDALE

Bellarine Peninsula Railway-Drysdale

The railway has continued to be busy through the daily New Year running period. Though still very short on volunteers, we have managed to crew the trains and keep both stations staffed throughout. Our 'glamour' locomotive M6 has been running around with a stunning deep cherry red paint job, which ties in nicely with our latest attraction-'The Wizards Express'.

This service operates on selected days and features magical and wonderful things happening:- food &

drink, plus our roaming team of friendly witches & wizards. Our Kids party trains have also been popular. Late November saw the B.P.R take centre stage during the Queenscliff Music Festival. Our (now very famous!) Blues Train ran intensive services throughout the festival and our pair of Tasmanian Rail Motors were fitted out as cafes for the weekend.

The railway also was graced with a visit by the Premier, Mr Bracks as well as our local member Elaine Carbines. Lastly, thanks to our

neighbours around Drysdale Station who have made our 'Station Watch' program a success, with no vandalism reported at the time of writing.

The train timetable returns to normal after the Australia Day Weekend with services at 12.15 & 3.30. Note there has been a small increase in fares, the first since early 2000.

Take Care

Paul & Kate

Drysdale Railway Station
24 Hour Info 5251 3725

CLIFTON SPRINGS PRE-SCHOOL

Well here we are again gearing up for a new kinder year. A big welcome to all the children and their families who will be a part of our Preschool program for 2003. The Preschool is looking great with the revamped playground and we are hoping to get some more shade erected early in the year over more of our play area. The inside is looking great with a new coat of paint, just waiting for the activities to begin. Our two pet guinea pigs are also eagerly awaiting the new year for more cuddles and pampering.

This year we will incorporate three sessions a week for our 4 year olds and we will also have a 3 year old group for one session a week. We still have a few vacancies left for the 2003 Preschool year, so if there are any families in the area who may be thinking of Preschool for their children please contact either Eril or Julie on 52513158 or our Enrolment Officer Rebecca on 52511878. Clifton Springs Preschool is registered for the childcare rebate for both

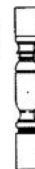
3 and 4 year old groups. Contact Centrelink for further information.

We would like to wish everyone well for the year ahead and look forward to meeting some new friends.

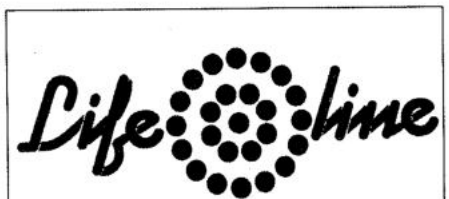


CARROLL'S WOODCRAFT SUPPLIES

66 Murradoc Road, Drysdale. 3222
Ph: 5251 3874 Fax: 5251 3864
E:mail: carrolls@pipeline.com.au



WOODEN FOLK ART SUPPLIES
WOODCRAFT SUPPLIES
WOODTURNING TUITION
MACHINERY & HAND TOOLS
SAW SHARPENING SERVICE
POWER TOOL REPAIRS



Lifeline Shops have a wide range of all the following items



"Village Walk"
Shops 9 & 10, 21 Clifton Springs Rd.
Drysdale, Ph: 5253 2168

LIFELINE ALSO SELL INDUSTRIAL RAG
RING 5222 6418 FOR A PRICE

YOUR LOCAL REPRESENTATIVES

Member for Bellarine.

As the new Member of Parliament for the seat of Bellarine I would like to thank local residents for their support. It is indeed a privilege to have the opportunity to work with you and represent you in the Government.

The Government made a series of commitments to the Bellarine electorate in the election campaign. The areas which affect readers of the Messenger will be detailed in future articles - so watch this space. Keep an eye out in the local press for government achievements - I think you'll find that we are doing a lot to improve services in this area.

Of particular interest to local boating enthusiasts are the government funded upgrades to local boat ramps, as part of a \$1 million dollar state-wide project :-

- Clifton Springs (\$42 000 for a second ramp and pontoon)
- Indented Head (\$20 000 to refurbish the ramp)

I look forward to working with the community in implementing commitments made during the 2002 election campaign, and to representing the people of Bellarine in Parliament and Government.

I encourage residents to make use of my office if we can be of assistance in any matter. I wish you all a happy and safe 2003.

Lisa Neville MLA
State Member for Bellarine
Shop 1, Newcomb Central
71 Bellarine Hwy,
NEWCOMB 3219

Phone: 52483462

Fax: 52485294

Email:

lisa.neville@parliament.vic.gov.au

DRYSDALE REMOVALS & STORAGE

Local, Country,
N.S.W. & S.A.
PH. (03) 5251 3674

J.B. NAILS

Qualified Nail Technician

Acrylic Nails • Waxing
Manicures • Pedicures
Beauty Care • Make Up

REASONABLE PRICES

Phone for an appointment
5253 2315



Piano
Lessons in
your home



Beginners to advanced

Older beginners welcome

Christy Abrahams *A Mus A*

Ph: 5255 5908 Mob: 0408 558 400

Email: Christy@bigpond.com

Bellarine Bait & Tackle



- Friendly Service • Gifts
- Fishing Licences • Bait
- Boating Flares • Life Jackets
- GPS • Quality Tackle
- Expert Advice - Helpful Hints
- Marine Oil & Anchors

EFTPOS AVAILABLE

OPEN 7 DAYS-A-WEEK
4/46 Murradoc Road, Drysdale.

Phone/Fax: 5253 2166

Mobile: 0417 621 570

email: bell_baitandtackle@bigpond.com

MAP REF: MEL MAP 238 K9

DON'T SELL YOUR PROPERTY ...

Until you talk to us!

We guarantee you: Honesty.
Ethical practice.
Professional Service.
Vendor's interests paramount.
Feedback on inspections.
Genuine sale valuations.
Highest prices achieved.



Bayshore FIRST NATIONAL
REAL ESTATE

26 High Street, Drysdale. Telephone 5251 2610

What's happened and what's happening at the CLIFTON SPRINGS GOLF CLUB

On behalf of the Committee, Staff and myself, we wish all our members and guests a Happy New Year and hope everyone enjoyed a safe Xmas. Since the last edition of the Springdale Messenger the Club had a very successful New Years Eve night with over 150 members and guests enjoying a fabulous 3 course meal and dancing away to the music of "Off the Record".

The next big show at the Club is the popular "Babba" show which booked out within 3 weeks of tickets going on sale. We are currently taking a waiting list in case of any late cancellations with tickets only \$40.00 per person.

If you missed this show, the next one is the "Sensational Sounds" Show which is a tribute to the Beach Boys, Everley Bros, Cliff Richard and the Shadows plus many more. This show is on Saturday April 12th.

Following the "Sensational Sounds", on May 31st we have direct from Queensland the "The Neil Diamond Super Hits Show" and don't forget our free live entertainment every Friday night.

On the golfing side, Hole in ones have become popular with Bernard Deli acing the 6th hole, followed by Peter Brown on the 17th, Daniel Driscoll on the 9th and Maureen LeHunt on the 11th. Congratulations to all players on this unique achievement. Considering the lack of rain the course is holding up remarkably well, with the front 9 holes with the new couch grass in fantastic condition. Green fees for 18 holes is only \$18.00, what great value at only \$1.00 per hole for 18 holes.

Golfing Memberships are available at only \$420.00 for a 7 day golfing membership with Junior

membership only \$110.00. Application forms are available from the Club.

Works hopefully will commence shortly on Stage 1 of the new car park, which no doubt patrons and staff will be looking forward to with great anticipation.

The new smoking regulations have had a large impact over the past 4 months in our gaming operations, but we do remind all patrons that the club has smoking facilities available.

Our Caterers have just released their new menu and with the Bistro being busy over the Summer period, bookings are essential with the opening hours for meals being Lunch 12.00pm till 2.00pm and Dinner 6.00pm till 8.30pm.

David Milne
Manager

IAN'S WINDOW CLEANING SERVICE

- INTERNAL CLEANING
- EXTERNAL CLEANING
- SINGLE & DOUBLE STORY HOUSES
- FLY SCREEN CLEANING

Obligation Free Quote

PHONE: 5259 1370
MOBILE: 0409 706 865

SOLICITOR & CONVEYANCING

Basil Ristevski LL.B

5251 3453

NEEDLE SYRINGE PROGRAM

Are you using drugs?
If so, then protect yourself from HIV and Hepatitis C.

Obtain clean fits from the Drysdale Community Health Service
21 Palmerston Street, Drysdale.

A CONFIDENTIAL service.
No questions asked.

FTA ACCOUNTANTS

- ▼ Tax Returns
- ▼ BAS Returns
- ▼ Small Business Advice
- ▼ Investment Advice

5253 2992

CRN. OF SPRINGS RD. & HIGH ST., DRYSDALE

The Papercraft Café

- Specializing in stamping & scrapbooking supplies.
- Day & evening classes by appointment
- Special occasion stationary made to order
- Gift vouchers - Reward cards
- Light refreshments - Genovese Coffee

Shop 7/136-146 Ormond Rd, East Geelong, 3219

Ph/Fax 03 5222 6788

Open - Mon-Fri 9am - 5.30pm

Sat 9am - 1pm Closed Sun & Public Holidays

Bellarine
Cross Stitch
& Craft

Shop 4/21
Village Walk, Drysdale
(behind the Post Office)
Cross Stitch and Tapestry Supplies
DMC, Mill Hill, Gutermann,
Heritage, Lanarte, Mirabilia
Lavender and Lace, Dimensions etc.,

Trading Hours
Mon-Fri 9.30 - 5.30
Sat 9.30 - 4.30 (Dec & Jan)
Phone 5253 2311
email:
alan@xstitchimages.com.au
www.vicstitch.com.au

Looking for guest speakers?

BreastScreen can help

Our Information Officer can attend a meeting or other gathering (at no charge) no matter how large or small, to provide information, show you what a mammogram (breast x-ray) looks like and answer questions about the free BreastScreen program.

Contact Geelong and South West BreastScreen on **5221 6977**

Geelong BreastScreen
254 Latrobe Terrace

Belmont BreastScreen
18 Regent Street



BELLARINE AGRICULTURAL SHOW

MARCH 15 & 16 2003

Happy New Year to all readers from the Bellarine Agricultural Society.

The show is fast approaching - it hardly seems 9 months since we held the last show at Portarlington. Where has the time gone?

This year a new experiment for showcasing agriculture on the Bellarine Peninsula, the show will open on Saturday as well as Sunday.

Saturday, the emphasis will be on the children of our area. Those of you who have seen the show schedule will notice that Ronnie the Rooster has a special page all of his own. He asks you to draw the colour and friends you think he will find when he is at the show. When you have finished colouring in his pic-

ture please send it to "Ronnie" C/- PO Box 315, Drysdale, 3222. and then come along with Mum, Dad, Nan & Pa and see how your entry went. Remember Ronnie will be there to welcome you on Saturday and also to have a look at the drawings and find out if you have drawn his special friend in your picture. I am not going to tell you who Ronnie's special friend is - can you guess? Ronnie will be there again on Sunday to make sure all animals who attend have a good time.

There will be other animals there on Saturday for the children to meet - small ponies, alpacas, the baby animals in their nursery, and large beef cattle. You can have more fun on the jumping castle, the pony rides and the large coach ride, perhaps the little Kenworth truck will come and

see if the children remember him from last year.

Sunday will be a fun day. The poultry and pigeons will arrive as well as the magnificent show horses, dairy cattle (perhaps there may be a baby calf with them) and this year those lovely furry little rabbits will sneak into the showgrounds - they haven't been at Portarlington so we will have to give them an extra special welcome.

As I write this to the smaller members of the Bellarine Peninsula, January 2nd was a very special day, all our teddy bears had a birthday - Teddy was 100 years old. To celebrate this special event, bring your teddies to the show for their annual picnic. Have them at the special teddy bears area by 10.30am on Sunday - their special section is on Page 18 of the Show Schedule.

The vintage tractors, cars and motor bikes will be heading for Portarlington all shiny and polished. Their first job on Saturday will be to take part in the parade through the main street of Portarlington. Even "Portie" the helicopter could make a surprise visit to the oval as he did last year - this all adds up to two days of great fun.

Come along or come down to Portarlington (if you live away) there will be surprises behind every straw bale.

Balletta's Home Maintenance

"WE DO IT ALL"

"NO JOB TOO BIG OR SMALL"

- PERGOLAS & DECKS
- HOUSE & BATHROOM RENOVATIONS
- ALTERATIONS & EXTENSIONS
- AIR CONDITIONER INSTALLATIONS
- CARPENTRY
- PAINTING
- TILING
- PLUMBING
- ELECTRICAL
- TV ANTENNAS & EXTRA POINTS
- TELEPHONE POINTS

PHONE
DOMINIC 0407 305 529
TERRY 0412 157 842

BELLARINE VETERINARY PRACTICE DRYSDALE

7 Palmerston Street, Drysdale
Ph: 5253 1393

Consulting by Appointment
MONDAY TO SATURDAY

Offices hours: Monday to Thursday:
9.00am - 12.30pm & 1.30pm - 6.30pm
Friday: 9.00am - 12.30pm &
1.30pm - 5.00pm
Saturday: 9.00am - 12.00 noon



MORTIMER PETROLEUM

PETROL STATION & CONVENIENCE STORE

97 High Street Drysdale Phone 5251 2603
Petrol, Autogas Bait & Fishing Supplies

CAR WASH

Open 6.00am-10.00pm

CONCEPT CAMPERS

Manufacturers and repairers of Annexes, Awnings, Tonneaus, Tarps, Horse Rugs, Boat Covers Custom Built Camper Trailers Caravan and Boat Storage Discount for senior citizens

Phone (03) 5253 2569
61-63 Murradoc Rd. Drysdale.



FLEA BUSTERS
MOBILE DOG WASH

Clipping, Bathing & Grooming

"A complete service by the true Professionals".

5281 1711

Professional Service For All Breeds At Your Own Home

BONE MARROW RECYCLE SHOP

High St. Drysdale

Donations of good clothing and brick-a-brac needed.

All proceeds from our shop go to help those with Leukaemia

MAGGIE GOVE N.D.

Bowen Therapist & Naturopath

Member of A.N.T.A.

Drysdale: Clinic 03-5251 1188

Ah 03-5253 2230

(Rear of Elegant Profile)

DRYSDALE HOTEL



- Open 7 Days
- Cosy log fires
- Daily blackboard specials

High Street, Drysdale.
Bookings Ph: 5251 2301

DRYSDALE CWA

Drysdale CWA will resume in February 2003. Meetings are held at the Clifton Springs Community Centre. Committee meets 1st Tuesday of each month. General meetings 2nd Tuesday of each month at 1pm and Craft Day meetings the 4th Tuesday at 11am.

We had a very successful 2002. Our wonderful members raised

money for charities and a lot of fun in-between was had by all.

The year 2003 has started off with a new Executive Committee. President - Betty Collier, Secretary - Shirley Rogerson, Treasurer - Dorothy Chase. Our sincere thanks goes to our previous Office Bearers.

Drysdale CWA was formed in 1948 and is still going strong. Great

friendships have been formed and we have several new members and their views are refreshing.

New Members are Welcome, come and join us.

Contact **Shirley**
on 5253 2757
or **Jan**
on 5251 3553.

PAID IN FULL

Christmas shopping, Boxing-Day sales. Have now- pay later. CREDIT! It's so easy.

Maybe you carefully calculated what you could afford and paid it off early. Maybe you got caught out with overlooked bills, and expenses that cropped up. Maybe you put the 'day of reckoning' out of your mind as you got carried along with the

'bargains' of the moment. Maybe right now you are wringing your hands wondering how you are going to pay. Your 'credit' has become your 'debt'.

This is not written as a 'help' for those in financial difficulties, as welcome as that might be, but to alert us to an even greater debt, and that, to God.

Have we ever considered our treatment of Him? We come into this world which we do not own and exploit it with seldom a 'thank-you'. We have ignored God and robbed Him of His due, and yet He loves us. He has pity on us. He knows we act in ignorance. It is to Him we all have to give account and we are bankrupt. So He comes to our rescue.

God is holy. He wants to spend eternity with us, but first He has to

deal with our unholiness. This is what Jesus did for us when HE died on the cross. Romans 5:8 says "God showed His great love for us by sending Christ to die for us while we were still sinners." Think of it as an amnesty. We hand over our sin - God hands over His pardon. Jesus explains this offer in story form in Matthew chapter 22.

The invitation is there, but we don't know for how long. Better to accept God's 'PAID IN FULL' than to risk the 'day of reckoning'.

A message from your local Baptist Church. 45-51 Central Road, Clifton Springs.

Sunday Services 10am also Young Warriors (Sunday School) 2nd, 4th & 5th Sundays 7pm

Enquiries welcome Ph: 5253 1833 or Rev. David Evans on 5251 3440

Uniting Church in Australia

CONCERN

VILLAGE OP SHOP

Come and browse through our range of good quality ladies and mens wear, plus our selection of young adult and childrens clothing and our range of small household goods.

DONATIONS OF GOOD CLEAN CLOTHING AND SMALL HOUSEHOLD GOODS REQUIRED

Phone: 5251 3640.

Shop 19/4 Village Walk, Drysdale.
Hours: Mon - Frid 10.00a.m. - 4.00p.m.
Sat - 9a.m. - 12 Noon.



DRYSDALE CHRISTIAN FELLOWSHIP

"A Community Church"

276-290 Jetty Road, Drysdale.

Phone: 5253 2241

Service Times:

Sunday Morning:	10.00 a.m.
Kids Church:	10.00 a.m.
Toddler Church:	10.30 a.m.
Sunday Evening:	6.30 p.m.

You are welcome to join us as we meet together. Enjoy great music, a message we can all relate to, and a friendly, caring atmosphere.

Get to know someone over a tea or coffee after the service.

For more details on any of our activities, please contact our church office Monday -Thursday.

Salvation Army Family Stores

Mortimer St. Drysdale

Ph. 5251 2475

Plenty of Bargains

The Place to Shop

Come and see us We are here to Help You



Quality Butcher

PETER HOMMELHOFF

HOMMY'S

QUALITY MEATS

For something new and different

16 High Street, Drysdale 3222.

Phone: 5251 2270

Clifton Springs Golf Club

Play By The Bay



Great Food -- Great Views -- Great Prices

TRY OUR FABULOUS \$5.50 LUNCHESES

(Monday to Friday only)

SUNDAY LUNCH ROAST
3 Courses for only \$12.50

A-La-Carte menu also available

February

Live Entertainment
(7.00pm-10.00pm)

Friday 7th - Mark Campbell

Friday 14th - Warm Sands

Friday 21st - Peter Perez

Friday 28th - Utopia



Golfing Memberships

for only

Playing Membership \$420.00

Country Membership \$210.00

Junior Membership \$110.00

Social Membership
Only \$5.50

SATURDAY APRIL 12TH
"SENSATIONAL SOUNDS"

Tribute to The Beach Boys, Everley Bros
Cliff Richard and The Shadows plus many more
\$35 PER PERSON INCLUDES
2 COURSE MEAL AND SHOW
Don't Miss out BOOK NOW

SUNDAY TO THURSDAY EVENING
\$3.50 MEAL DEAL

Buy one main meal off our regular menu
and receive another of equal or less value
for only \$3.50

on presentation of this coupon
(not valid Public Holidays and Long Weekends)

valid until 28th February 2003

Phone Bookings-52513391-

SPORTS REPORT

Portarlington Sailing Club

Portarlington Sailing Club invites you to "Learn and Go Sailing"

If you would like to do any sailing please phone Portarlington Sailing Club 52592903, leave your name and phone number, we will get back to you to arrange a suitable time (weather permitting). Or just come along, down Point Richards Rd., through the car park at the Boat Ramp to the Sailing Club. Members will be there to advise or take you for a sail.

Organised racing starts again for 2003 with the Port Summer Festival January 11 and 12th at 2pm at the Club, racing will be over the two days. Come join in. Thereafter - each Sunday at 2pm, until the end of season on April 13th. with the exception of Australia Day and Labour Day weekends:- there will be no racing on both weekends.

February 22 & 23rd 2003 The Victorian Trailable Yacht Titles, with a 5 race series, over a mix of long

and short course. 3 races on Saturday 22rd and 2 races on Sunday 23rd. P.S.C also have a crew only membership which includes AYF affiliation. Entry form and Notice of Race available from our Web Site www.pipeline.com.au/users/conder

June Kennett (Sec.)
ph. 52784926

Portarlington Sailing Club

DRYSDALE INDOOR NETBALL COMPETITION

WANTED - TEAMS PLAYERS AND UMPIRES

We are seeking expressions of interest from clubs, teams, players, and umpires to participate in our indoor netball competition.

Competition for the new season will be held on Tuesday evenings, commencing 4th March 2003 to 24th June 2003 (including finals) at the Bellarine Sports Stadium, Peninsula Drive, Drysdale. Sections offered are 13/U, 15/U and 17/U.

Applications close 18th February 2003.

Enquiries to: Joyleen 5251 3716 Lorna 5253 2372 PO Box 222 Drysdale, 3222

Would you like to play Netball?

Would you like to member of a successful, progressive, local Netball Club?



Jim's Electrical
Your local contractor
REC 14581
For all repairs & installations
131 546
www.jims.net

VISA  

If you answered yes to one of these questions, Drysdale Football Netball Club is affiliated with the Bellarine and District Netball Association and play the same fixture as the Drysdale Hawks Football Club. The season commences on Saturday 5th April. Our club fields teams in junior 11, 13,15 and 17 and under and senior A, B, C and D sections. Team coaches are both experienced and accredited and the club prides itself on its professional, family oriented ideals.

CLUB REGISTRATION NIGHT

Thursday 6th February 6.30pm at the Drysdale Hawks Football Clubrooms in the Drysdale Recreation Reserve. Free sausage sizzle. First training is Thursday, 13th February 6.30pm at the Drysdale Football Netball courts. The club welcomes all interested persons, whether player, umpire, official or spectator to attend registration night and find out what DFNC is all about.

SPORTS REPORT

Legends will step onto the field in February

February will be a legendary month in the calendar for the Drysdale Cricket Club as two exciting sporting and community events take place; the 'Bank of Melbourne Challenge' and the 'Barwon Disability Cricket Tournament'.

On Sunday, February 9th at 11am, the 'Bank of Melbourne Challenge' kicks off when a team of local cricketing legends led by Club President Greg Scott take on the 'Doug Wade 11' at 'Wade Oval', Belcher's Road, Drysdale. The 'Doug Wade 11' is arguably the most star-studded team this side of Birchip and will feature not only Doug Wade himself, but many past and present stars from the Geelong Football Club (Billy Brownless and Gary Hocking just to name two). This day is a must for any family or sports fan and will provide a great day of entertainment with the on-field action being complimented by

a BBQ and drinks tent off-field for anyone wishing to satisfy a hunger or soothe a thirst. Entry will be by gold coin donation at the ground and anyone wishing to receive further information is encouraged to contact the club on 0429 401 390.

Crowds on the day will also have the chance to win a signed and mounted 'official' double photograph of ex-Australian cricketer, Dean Jones, as well as other Victorian Bushrangers Gear. The proceeds of this will go towards the club's second major sporting event in February and one for which Dean Jones is the patron of - The 'Barwon Disability Cricket Tournament'.

On Wednesday the 19th and Thursday the 20th of February, six teams from around Geelong will come together for the first cricket tournament ever held in Geelong specifically designed to include people of all abilities. Assisted by

six local clubs (including Drysdale and Collendina) the teams will battle it out in a round robin competition at Eastern Gardens, Portarlington Road, Geelong between 11 and 5pm.

Drysdale Cricket club is interested to hear from any person who is interested in playing for Drysdale at this tournament regardless of their ability or previous cricketing experience. There will be no cost to participants and all players will receive on-going membership to the club and will be presented with whites and a Drysdale Cricket Club playing cap prior to the event. Interested players and or volunteers who may be able to assist as umpires / scorers etc. over the two days are asked to call Jason on 5222 3911. A training night has also been scheduled leading up to the tournament for Thursday, February 6th at Drysdale Reserve, 5.30pm. Drysdale Cricket Club is thankful to Cricket Victoria, The City of Greater Geelong, Collendina Cricket Club, and Leisure Networks for their support for this event.



18-20 HIGH ST. DRYSDALE.
OPEN 7 DAYS A WEEK
 November to April: 10am - 5pm
 May to October: 11am - 4pm
 All Public Holidays except Good Friday and Christmas day.
 New Members always Welcome
Ph: 5251 1605

CARPET STEAM CLEANING

MARICK CARPET CLEANING
DICK BOLAND
Ph 5259 2217
Mobile 0412 517 065
 Carpets, Lounge Suites
 Car Upholstery Stain Guard Available
FREE QUOTES

DRYSDALE CARPET COURT

**CARPET - VINYL
 CERAMIC TILES
 FLOATING WOOD
 LAMINATE FLOORS**

Proprietor: Neil Petrie
 Phone: 5253 1855 Mobile: 0419 519 030
 63 Murradoc Road, Drysdale.

Feeling Troubled?



Explore options - Find answers!

Counselling (Couples & Individuals)

*Confidential *Caring *Skilled *Professional

A changed life begins with one small step!

Phone: 5253 3060 Today!

(Fees negotiated according to Income)

Situated: 219-223 Jetty Road (Cnr. Cowies Rd.), Drysdale, Bellarine Peninsula, Vic. 3222



Drysdale Physiotherapy & Sports Injury Clinic

■ Spinal ■ sports ■ Manipulative ■
 ■ Arthritis ■ Workcover ■ TAC ■ Vet Affairs ■
 ■ Hydrotherapy ■ Exercise Rehabilitation ■

Peter Terry MAPA, MPAA
 and associates

Ph. 5251 2958

27 - 29 High Street, PO Box 179, Drysdale 3222



Professionals

VENDORS TALK.... PURCHASERS WALK

Some vendors prefer to be absent while purchasers inspect their property while others feel they want to stay and contribute.

Some stay because they think their input is essential for the optimum marketing of their home, but in most cases direct contact between vendor and purchaser can result in lost opportunities, especially when purchasers are put off the property by too much information too soon.

It is not uncommon for vendors to anticipate and answer objections before they are voiced and in so doing highlight negatives.

For example, a vendor conscious of the steepness of their driveway might say as the purchaser walks

past the wheelie bin: "We always put the bin in the boot and drive it to the gate." The purchaser's attention is drawn from the general to the specific before their emotional connection with the property is fully established. They are asked to concentrate on features - negative ones at that - at a time when they are still in initial stages of embracing or rejecting the property. Even if they noticed the steepness in passing they may not have thought it through in terms of day to day inconvenience.

Vendor presence during inspections inhibits purchasers in other ways. It can make buyers uncomfortable and make it harder for them to ask the agent for the very details

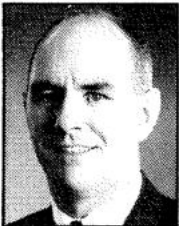
they do want to know. It draws their attention away from the property and causes them to focus on small talk.

It is natural for vendors to be interested in the progress of the sale of their property. The best way to stay involved is to choose the agent you can trust to show your house to best advantage - and one who communicates with you every step of the way.

Knowing what's going on takes much of the stress out of the marketing process and allows you to take a back seat with confidence.

Visit our website at
www.guyett.com.au

Phil Cumming
Licensed Estate Agent



0408 599 232

Gabrielle Beams
Sales Consultant



0412 430 976

Heather Blair
Sales Consultant



0417 142 516

David Cross
Rural Sales Consultant



0419 328 958

Hayley Randall
Sales Co-ordinator



0409 080 901

Carolanne Hobbs
Property Manager



0417 306 344

Guyett Real Estate P/L

11 Clifton Springs Road, Drysdale

Open 7 days a week

www.guyett.com.au drysdale@guyett.com.au

5251 2847

The SpringDale Messenger