

The SpringDale Messenger

Your Free
Community
Newspaper

Compiled and published by the SpringDale Neighbourhood Centre Inc A002916V

Circulation 3,700

ABN 21 404 220 267

Vol 14 No.1, January 2004

Taking on a Fresh new look by Brent Diamond

Safeway Drysdale will undergo a significant revamp in 2004 after re-development plans were given the go ahead by the City Council.

The Safeway extension has been on the agenda for several years and the growth of the Drysdale community has finally convinced the council to extend the popular supermarket.

Cr Heather Wellington said that the long process was due to the compact size of the car-park at the site as well as negotiations between nearby buildings.

"The council gave approval for this some months ago, it wasn't a very protracted process - the site is very difficult and there's a real problem with car-parking. So there was quite a prolonged process with the council and the owners trying to work out the best way to re-develop the shopping centre and make sure there is adequate car-parking," Cr Wellington said.

"There was a negotiation between the owners of the building (Senior citizens) and the owners of the property further up towards Springs Road to negotiate access for the car-parking through to the sen-

ior citizens. So all those factors took some time to work through."

Customers will be encouraged to use the car-park to the east side of the supermarket which will be extended and linked to other shops in the community.

"The car-parking will still be a constraint but I think the best possible arrangement has been reached."

Cr Wellington believes the re-development is critical to the ever-growing Drysdale community and is looking forward to the finished product.

"It's just vital - it's been really difficult for the people, particularly over the summer period. The shop just gets incredibly crowded and it's important for our sense of pride in our town that it's upgraded and that it's big enough for people's needs. I think people will be very pleased when it's done," she said.

While admitting the process was a long one, a Safeway spokesperson said the company is delighted with the prospect of providing a larger store for the community.

"It was just sort of the approval process through the council - it took a little while but we're pleased to be getting on with it."

The community will now be able to enjoy the luxury of a larger store that will extend out an additional 1200 square metres and will supply even more goods for their every day needs.

"It'll give them a larger supermarket to shop at, so the people who live close by can now shop in a full-line supermarket in the area rather than having to travel a long way to get the same retail. It will give them a broader range of products in their local area," a Safeway spokesperson said.

"At the moment it has a small bakery, so it will have a full-sized Safeway bakery, it will have a bigger liquor store - so sort of an expanded version I suppose of what they have now."

The re-development is expected to begin early in the new year and be completed by mid- 2004, and the store will still run the normal trading hours of 7am - 10pm seven days a week.

"The store will continue trading as normal as the construction goes on, so there will be very little disruption to the current operations."



**DRYSDALE
VILLAGE
HARDWARE**
(03) 5251 3267

YOUR HANDY
HARDWARE
STORE

THE ARCADE
HIGH STREET
DRYSDALE, 3222.



Bank of Melbourne

- OPEN SATURDAY
- HOME LOAN CENTRE
- GOOD TERM DEPOSIT RATES

CONTACT WAYNE: 0413 133 758

**SHOP 9, SUPERMARKET
COMPLEX, DRYSDALE**

The SpringDale Messenger

The SpringDale Messenger is compiled by the SpringDale Neighbourhood Centre Inc. A0024916V, 14 Princess St. Drysdale. Postal: P.O. Box 80, Drysdale, 3222.

Editorial and Enquiries:

PH: 5253 1960. FAX: 5253 3050

To improve the administrative arrangements for the Messenger we are encouraging all contributors to provide their information on disk (Word) or email it to us – ATT Rosie on: office@springdale.org.au For those who have difficulty providing your contributions on disk we are still happy to accept written copy or make our computers available for your use.

Next Publication -

Copy deadline:

9th February, 2004

Distribution:

27th February, 2004.

Views expressed in this newsletter are not necessarily the views of the Publisher, the SpringDale Neighbourhood Centre Inc.

Advertising:

To ensure publication in a specific issue, copy must be submitted prior to deadline.

This includes both new adverts and alterations to an existing advert. Layout and Design of this issue by Pagination Design Services, Geelong. For any queries about advertising, please contact Anthony Zavaglia at Pagination Design Services.

Ph: (03) 5223 2494

Fax: (03) 5221 8063

springdale@pagination.com.au

Matilda's
PINE & COUNTRY
FURNITURE

Locally Owned with Factory in Geelong
* Free Quotes on Customer Designs *

Gifts, Furniture and Collectables

16 Collins Street DRYSDALE (Next to Hotel) PH: 5253 1516 OPEN 7 DAYS	3-7 Seaforth Street NORTH SHORE (Factory Direct) PH: 5277 0299 OPEN MON-THU
---	--

Contents

<p>Taking on a Fresh new look by Brent Diamond 1</p> <p>NEWS FROM SPRINGDALE</p> <p>NEIGHBOURHOOD CENTRE 3</p> <p>- A very Happy New Year to you all and Welcome to 2004!</p> <p>- Term 1 Classes</p> <p>- SpringDale New Resident's Kit</p> <p>- Adrian Mannix Awards</p> <p>- Occasional Care</p> <p>- What's On in the North Bellarine Peninsula Area</p> <p>Drysdale Rotary Club looks for Shelter 4</p> <p>Do you need a loan? 7</p> <p>Garden notes 8</p> <p>Portarlinton Pre-school Inc. 8</p> <p>Clifton Springs</p> <p>Baptist Playgroup 8</p> <p>Travel Talk by Carol McCarthy ... 9</p> <p>What's happened and what's happening at the CLIFTON SPRINGS GOLF CLUB 10</p> <p>Bellarine SES news & road safety tips 11</p> <p>Lost property 11</p>	<p>2004 - Celebrating 125 years of rail service to the Bellarine Peninsula Community! 12</p> <p>Friends of Ann Nichol House 13</p> <p>RAV mourns loss of paramedics 13</p> <p>Ladies Probus Club of Bellarine ... 14</p> <p>Ocean Grove memorial recreation reserve 14</p> <p>Diabetes education group 15</p> <p>Chronic obstructive pulmonary support group 15</p> <p>Better health self management program 15</p> <p>Walking group 15</p> <p>Stewart McArthur - media release . 16</p> <p>Peninsula players Inc 16</p> <p>Drysdale ladies probus club 16</p> <p>SPORTS REPORT 18</p> <p>Teague's basketball on a roll 18</p> <p>Drysdale looking for their second flag 18</p> <p>SPORTS REPORT 19</p> <p>Huge coup for Ocean Grove and Queenscliff 19</p> <p>New coaching blood for Hawks 19</p> <p>Is now the right time 20</p>
---	--

The SpringDale Messenger

Naturopath

Lisa Taylor N.D. (A.N.T.A.)

**Drysdale Naturopathic
Centre (in Bodytonic)**

Tues., Thurs. & Fri. 9.00am - 5.00pm
appointments ph: 5253 2510

Also available at Carmoora Clinic, 343 Moorabool St.

Wed. & Mon., Ph 5223 2616

Specialising in women's and children's health using
Herbal, Homoeopathic and Soft Tissue Therapies.



Lynette's
User-Friendly
Computers

**Personalised
Tuition & Training**

Ph: 5259-3963

Serving the Bellarine Peninsula

SPRINGDALE NEIGHBOURHOOD CENTRE

A very Happy New Year to you all and Welcome to 2004!

I sincerely hope you had a happy festive season and are looking forward to a great New Year. My family and I moved over the break and we are now happily settled in Wallington. I was quite sorry we had to leave Drysdale, but we are looking forward to a long and happy stay at our new abode. After a refreshing break, the staff, volunteers and Committee of SpringDale are looking forward to working with you all again this year.

Term 1 Classes

Don't forget to browse our Term 1 brochure, which you will find in the middle pages of this issue. There is always something for everyone. (If not, let us know!) Please book early! Classes do fill very quickly. Thanks to all those people who have re-enrolled in some classes as it's good to see the lists filling! If you need any additional information regarding a class, or if you would like to discuss any issues, please call Sally at SpringDale 5253 1960.

SpringDale New Resident's Kit

Thanks to the tireless efforts of Karen here at SpringDale, our New Residents' Welcome Kit is nearly complete. Karen has spent hours ringing around to ensure that the North Bellarine Community Information Supplement (a major part of the kit) is accurate and up-to-date. Many thanks to the people who contributed information. These kits will be available for distribution shortly. For any enquiries, please call me at SpringDale 5253 1960.

Adrian Mannix Awards

Once again, the Drysdale Lions and Rotary Clubs, and SpringDale, are happy to host the third annual Adrian Mannix Awards. We have received a few nominations so far, and it already seems that the standard is going to be high again this year. Keep those nominations coming in! There are many people in the area who voluntarily work tirelessly for a cause they believe in. Why not take this time to recognise their wonderful work, and nominate them this year? A nomination form is enclosed in this issue of the SpringDale Messenger. If you need any assistance,

please call me at SpringDale 5253 1960. Remember - nominations close 13th February.

Occasional Care

We have had to raise our fees this year, in order to cover costs adequately. The new rates are enclosed in this issue. Also, Friday afternoon sessions are not going to be offered this year. Occasional Care reopens at 9.00am Monday 9th February. Looking forward to seeing you all again this year.

What's On in the North Bellarine Peninsula Area

If you have an event or happening you would like to let people know about, please let us know. In response to community need, we are including a 'What's On' calendar page in future issues of the SpringDale Messenger. You can either leave your information at SpringDale, email us messenger@springdale.org.au or phone us on 5253 1960 to advise. We are looking forward to hearing from you.

*Remember - SpringDale has more in 2004!
See you at SpringDale!
Amanda.*

INSTYLE BLINDS

QUALITY BLINDS AND CURTAINS
AFFORDABLE PRICES

- Venetian Blinds
- Vertical Blinds
- Beach Type Blinds
- Sun Screen Blinds
- Holland Blinds
- Outside Awnings
- Roman Blinds
- Curtains and Lace
- Repair & Maintenance Service

(Free measure & Quotes Shop-at-home service)

Servicing Bellarine Peninsula and the Surfcoast
48 Murradoc Road, Drysdale 3222.
Ph: 5251 1195

SpringDales Facilities

INTERNET COSTS

\$1.50 per half hour, 20 cents per printed page

PERSONAL USE OF COMPUTER

FREE, 10 cents per printed page

PHOTOCOPIES

A4 - 20 cents per copy
A3 - 30 cents per copy

FAX MACHINE

Local rate - 50 cents for the 1st page
10 cents per page sent after the 1st

STD rate - \$1 for the 1st page,
20 cents per page sent after the 1st

Drysdale Rotary Club looks for Shelter

The Drysdale Rotary Club have proposed a rotunda to be built on the 'Village Green' following celebrations of the centenary of Rotary International and the significant contribution of Rotarians during 2004-05.

The rotunda will also be aimed at symbolising the local contribution of the Drysdale Rotary Club which was introduced on May 14, 1975.

Drysdale Rotary Club President-elect Tony Cole said the club explored several ideas which could symbolise the marvellous feat.

"We considered approximately a dozen possible projects that included the proposed rotunda and also establishing a 'Centennial Garden' in the centre of Drysdale. We intend planting 100 trees to mark the century of Rotary and are exploring the possibility of naming a street," Mr Cole said.

The rotunda would be an added bonus to the Drysdale community with a new concept on the 'Village Green' to "provide renewal, rest and social interaction for Drysdale citizens".

"From observation and informal community consultations, Rotarians recognised the need for providing improved facilities for residents and visitors to be afforded shelter from the vagaries and extremes of weather, coupled with encouraging

wider inter-generational social interaction," Mr Cole said.

The proposed location of the rotunda is on the lower Western side of the 'Village Green', adjacent the High Street approach to the town centre roundabout.

"The proposed location and its rationale is especially sensitive in recognising the needs of those aged persons attending the adjacent Senior Citizen's Centre, as well as people visiting the shopping precinct," he said.

Although the cost of the rotunda is believed to be high, the Drysdale Rotary Club have committed themselves to funding the project through community sponsorships and the possible support of the local government.

The Drysdale Rotary Club has proved to be a fundamental organisation, after providing a phenomenal amount of funding throughout the world.

Providing continuous funding for the Bellarine Health Service 'Food Bank'; sponsoring the education of a child in Indonesia; co-development with the Leopold Lions Club to provide a Skate Board park in Leopold; establishing a miniature train project at Point Richards; being part of the 'Adopt-a-Highway' program with VicRoads and spon-

soring the annual Adrian Mannix award - are just some of the many projects the Drysdale Rotary Club have been involved in.

President Tony Cole is excited to be part of the centenary celebrations after being a Rotarian since 1979.

"(I've) thoroughly enjoy the camaraderie, all of which exists to find 'painless' ways of generating resources to improve the life and opportunities for others within our local and international community," Mr Cole said.

"This is a global opportunity to celebrate the place of Rotary and 'Rotary-in-Place', namely acknowledging not only what has been achieved within our first 'Century of Service,' but more importantly utilising that experience and impetus to extend Rotary energies and influence in recognising and meeting the increasing unmet community needs throughout the world," he said.

The proposed rotunda is expected to be completed by February, 2005 - while a Gala dinner for Geelong and district Rotarians will be held on 19 February 2005 in order to celebrate the centenary of Rotary International that occurs on 23 February, 2005.

By Brent Diamond

Bellarine Bayview Bed & Breakfast

**Edwardian period style
home situated off the
Portarlington Road,
on 5 acres at
Lot 7, Wisbey Court**

**Accom. Available nightly
or weekly.**

**2 ensuite queen rooms
(self contained avail.)**

**Nightly rate from
\$110 to \$130 per night.
Weekly rates discounted.**

Phone/Fax 5251 1983

LP ROCKET'S DRIVER TUITION

"Your Safety is our Business"

INSTRUCTOR - ROD SCHAMMER

(13 years as a licence tester with VicRoads)

- Lessons start at \$25.00 *(conditions apply)*
- Expert Tuition
- Manual & Automatic Vehicles
- Pick up from Home, School or Work
- Gift Certificates available
- Covering Geelong & the Bellarine Peninsula
- Member of the Professional Driver Trainers Association of Victoria

**For further information phone:
5248 3994
or 0419 802679**



**WISE GUYS
MENS HAIRSTYLIST
"Its the cut that counts"**

So come and see
Manfred, Wendy, Stan, Bec
for all mens and boys styling
* STUDENT AND PENSIONER *
DISCOUNTS

No appointment necessary



**Shop 1,
Wyndham
Street,
Drysdale.**

5253 2206

SPRINGDALE OCCASIONAL CARE CENTRE

**Fun and Learning
by the Bay
Mon to Fri - 9-12
Wed - 1-4**

**Quality
Flexible
Unique
Child Care**

"Occasional care is a unique child care service that supports families by providing flexible care for children from birth to school age."

SpringDale Occasional Care Centre is a registered child care centre, where you can be assured of quality care for your child.

The centre offers a structured program, provided by both Jean and Sonia, and is available Monday to Friday with morning and afternoon sessions. Please give us a call to secure your place.

Rates as from January 2004:

1 child per session - \$16.50 2 siblings per session - \$30.00

1 child 3 sessions p/w - \$45.00 2 siblings 3 sessions p/w - \$70.00

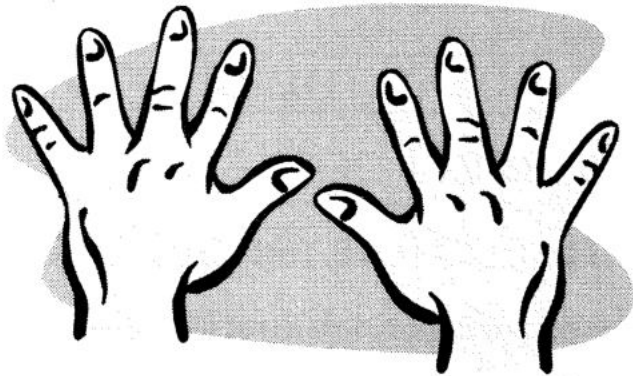
**Mon to Fri - 9-12
Wed - 1-4**

Jean Richards
Occasional Care Coordinator
14 Princess St
Drysdale 3222

Phone: 03 5253 1960
Fax: 03 5253 3050
Email: office@springdale.org.au



**SpringDale
Neighbourhood
Centre inc**



Queenscliffe

Dentist:
Dr Brenda Loh B.D.Sc. MELB

DENTAL
SURGERY

65 Hesse Street
Queenscliff

MONDAY TO FRIDAY, WED. EVENING & SAT. MORNING

5258 2388



Adrian E Mannix Community Services Award Application Form



Nominee: _____

Address of Nominee: _____

Telephone Number of Nominee: _____

Nominee: _____

Address of Nominee: _____

Telephone Number of Nominee: _____

Volunteer Contributions (example; aged care, youth, CFA etc), worked performed, length and time whilst Volunteering.

Details of Volunteer Experience – why you believe this person deserves this award. (50 words or less).

●●● WHK Day Neilson DO YOU NEED A LOAN?

WHK Day Neilson have established a Finance Broking Service to assist in meeting a range of personal and business financial needs.

What is Finance Broking?

A broker will identify your requirements and then source the finance markets looking for the best deal for you.

Why use a Broker?

It takes the hassle out of shopping around for a loan that meets your needs. A large part of the service is doing the job for you. We will work through the maze of paperwork and application requirements for you.

WHK Day Neilson Finance

Our specialists have vast experience within the finance industry in both consumer and commercial lending. Each loan is judged on its own merit and what we present to you is the most suitable loan available on the day. Our recommendations are provided without encumbrance, ties or vested interests with any lenders.

Negotiating the Best Deal

Having the time to search the finance industry is one thing, but having access to current data and knowing

how to interpret the figures is quite another. Consumers are often confused about the real costs of loans that have all sorts of conditions and provisions, which need to be understood. We know how to interpret these offers and present them to you in plain English.

Achieve better results.

When you delve into finance you'll quickly realise there's more to it than just available funds. Like accessories on a new car, today's loans or financial packages offer a whole lot of extras, which can be of great benefit to you over time. We are experienced in working with our clients in deciding which features they are likely to need over the course of a loan.

We work for you not the Bank

Even if you are happy with your current lender, why not obtain a second opinion. Quite often we can negotiate a better deal from your existing bank with needing to refinance.

Consumer Lending

If you want to buy a home, an investment property, needing to con-

solidate loans or are simply looking for a better deal, we have access to over 30 lenders and will find the most suitable loan for you.

Investment gearing

WHK Day Neilson Finance has access to a range of facilities where, using the equity you have in your property, you can set up a limit now and use it on a needs basis to act quickly on investment opportunities. Interest is only paid when you draw on the facility and even then only on the amount drawn, not the total limit.

Commercial facilities

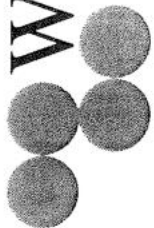
Whether you are buying a business, premises or equipment, our finance monitoring systems enable us to provide the right loan to match your needs.

No Cost

There is no charge to you for our service. The lender pays us a commission on settlement of your loan. The cost to you is no greater than if you had negotiated the loan yourself.

*Chris Humphrey
WHK Day Neilson*

WHK Day Neilson



Bookkeeping & Support Services
Internal & External Audit
Tax Return Preparation
Specialised Consulting
General Accounting
Financial Planning
Finance & Lending

Ph: 5253 2862

www.dayneilson.com.au

GEELONG - OCEAN GROVE - MELBOURNE - DRYSDALE

Garden notes

Give roses an overall summer trim, removing spent flowers and lightly cutting stems back to a healthy bud. Feed and water well for a great show of flowers in autumn.

Azaleas, camellias and daphne will benefit now with a dressing of compost or decayed cow manure over their root area to stimulate growth and bud formation.

Fuschias will respond to trimming now and with a dose of complete fertiliser will produce an autumn flush of flowers.

Cut off spent flowers of agapanthus before they get a chance to spread their seed. Although strikingly beautiful, they can become invasive.

Still time to plant more lettuce and other salad greens provided you keep them growing strongly with doses of liquid fertiliser.

Week Four - Prepare soil for planting spring bulbs, digging it over and spreading plenty of compost and decayed animal manure. Get a collection of pots ready, too.

Also at the end of the month, trim back foliage that has been burnt by the sun to promote new growth that, hopefully, won't be scorched again.

Wendy Hebbard.

Clifton Springs Garden Club.

First meeting for 2004 Monday February 16th. 7.30 Uniting Church Hall. Drysdale.

Clifton Springs Baptist Playgroup

45 Central Road
Clifton Springs 3222

Thursdays: 9.30a.m. to
11.00a.m.

Birth to Kinder

Fees \$15.00 per term with
annual insurance fee \$5.50

Contact: Caroline Rickard
32513171

or Church number 52531833

Portarlington Pre-school Inc.

Newcombe St. Portarlington 3222
Email: portkinder@jc.com

"Kinder with a View"

Portarlington Pre-school is situated in Newcombe Street Portarlington, overlooking Corio Bay. It is the Kindergarten with a view!!! In 2004 it will offer educational programs for three, four and five year old children. The Staff are qualified and experienced.

The pre-school offers:

- * a safe and caring environment for children and families

- * a play-based curriculum that is developmentally age-appropriate
- * music, movement and a creative arts program
- * a SunCare policy that includes ample shade cover in the outdoor play space.
- * competitive fee structure

We have vacancies in our Pre-Kinder Group in 2004 for three and four year old children. For enrolment information call the Pre-school on 52592793. Interested families are welcome to visit!



scott & co

chartered accountants

Incorporating FTA Accountants

- ▼ Tax Returns
- ▼ BAS Returns
- ▼ Small Business Advice
- ▼ Investment Advice

Contact - Frank Tigani

5253 2992

CNR. OF SPRINGS RD. & HIGH ST., DRYSDALE

Travel Talk by Carol McCarthy

Less than a two-hour flight from Sydney lies one of the world's most beautiful islands. Lord Howe Island. Unspoilt beaches, a crystal lagoon bordered by the world's most southern coral reef. Some of the best snorkelling I have ever done is straight off the beach. To set foot on Lord Howe Island is to escape to a pristine environment protected by World Heritage listing.

It's easy to slip into a slower pace and relax. The few vehicles on the island conform to a 25kph speed limit. Most people walk or pedal around on the hire bikes. You may want to do little more than read under a Kentia palm. We did a lot of this but also tried to do as many of the hikes that we could. The walks are world-class, from level strolls, to the challenging climb to the peak of Mt Gower. (We passed on this one - maybe next time?)

Fed by currents from the Great Barrier Reef, Lord Howe teems with marine life. The fish are so tame that on Ned's Beach they'll swarm to your feet when you toss bread.

Glenn was very tempted to throw a lure in but had to be content to snorkel amongst the 4 foot Kingfish. With brilliantly coloured coral reef, unspoilt beaches, fantastic surfing, diving and great fishing. Lord Howe Island really is a true paradise.

There are some really nice little restaurants to try. It's a bit of a hoot, at 6.30pm every night all the lodges potter about in mini buses dropping everyone off at whatever restaurant they choose, then at the end of the night the restaurant drives you home again. It's a really friendly place.

If you like beautiful beaches, snorkelling, walking or fishing and you're not too worried about night-life or organised kid's club then definitely give Lord Howe a try. I absolutely loved it and will definitely be going back.

We stayed at Ocean View Apartments. They're run by the Wilson family who are descendants of the first Lord Howe Island settlers. And have operated the apartments for more than 90 years. They are ter-

rific studio units, spotlessly clean with beautiful gardens, a pool and tennis courts. They also own the M.V. "B-Centauri" and operate fishing or sightseeing tours.

We've been given some excellent rates. A package from Melbourne for a week is \$1360 each. This is even cheaper in the winter months.

For more information give Carol a call on 52511125.

Frank Burge Cars

KEITH PURCELL
or
DAVID GALLOP

Phone: 5222 1606

Fax: 52218608

Mobile: 0418 554 011

172 Fyans Street,
South Geelong 3220

Funtastic Sale! P&O South Pacific

summer clearance save up to 50% or more

Let yourself go and have a funtastic time! For a limited time only, save up to 50% or more* per person in a twin cabin, on selected cruises. Find your funside, book now!

CRUISE	DEPARTS	DURATION	TWIN		4 BERTH	
			WAS	NOW*	WAS	NOW*
P406	15 FEB '04	9 nights, 3 ports	\$2615	\$1195*	\$1611	\$795*
P407	24 FEB '04	9 nights, 3 ports	\$2615	\$1195*	\$1611	\$795*
P408	4 MAR '04	11 nights, 5 ports	\$3175	\$1395*	\$1912	\$995*
P409	15 MAR '04	11 nights, 5 ports	\$3175	\$1395*	\$1912	\$995*
P410	26 MAR '04	3 nights	\$1095	\$595*	\$846	\$395*
P411	29 MAR '04	10 nights, 4 ports	\$2915	\$1295*	\$1759	\$895*

Fares are cruise only in AUDS. *per adult, for inside share twin or 4 berth cabin, as specified, berthed at P&O Cruises discretion. Inclusive of all taxes and charges. *Saving applies per person to inside twin share cabin. Other savings available for outside cabins. Offer applies to new bookings only. Not combinable with any other offer. Conditions apply. Subject to availability.



HARVEY
world travel

The Travel Professionals

Shop 2A 6 High St. Drysdale
CALL 5251 1125

What's happened and what's happening at the CLIFTON SPRINGS GOLF CLUB

Another year has flown by as we head into 2004 with great anticipation of the back 9 fairways continuing to show improvement. The front 9 couch fairways are the best they have ever been and justifies the Committee's decision to go through some short term pain to change the grass to legend couch. If any visitors or members of other golf clubs in the district have not played Clifton Springs the past 2 years, I suggest you come and have a game, you won't be disappointed.

Although the back 9 will not be to the same standard as the front 9, as time goes on the improvement becomes evident and in time we will

have 18 holes of magnificent couch fairways.

JUST A REMINDER TO ALL THAT THE FULL 18 HOLES ARE NOW OPEN FOR PLAY.

At this stage no major works have been planned for the coming 12 months on the golf course but if funds permit, capital works may be considered with the possibility of building new 5th and 8th tees plus the erection of the fence along Springs Street.

On the golfing side congratulations are extended to our professional Phil Hodge and Amy Milne on winning the prestigious Sir Dallas Brooks Mixed Foursomes Championships in Melbourne recently. Amy and Phil qualified 5th out of 142 pairs with the top 32 pairs then playing handicap foursomes match play. They went all the way and won the final 4/3 after posting a great 1 over the card on the front 9 holes at the impressive Metropolitan Golf Club.

And talking of golf if any one is interested at looking to join a golf club, I can recommend Clifton Springs as the Club to join with golfing memberships only \$450 for the full year, or as from 1st April pro rata membership applies for only \$225

with no joining fee applicable. All enquiries can be directed to the Club or the Pro Shop.

Landscaping works are nearing completion around the new car park with over 3,000 shrubs and ground cover planted within mulched garden beds. I would like to pass on a big thank you to all volunteers who have assisted with these works and the daily watering of these areas, the hard work is shown in the result with favourable comments being received from visitors, members and patrons to the club.

If you are looking for a great night out, pencil Saturday February 14th in your diary as we have back by popular demand the BABBA show at the club again with tickets only \$40 per person which includes a 2 course meal. With the popularity of this show you will need to book early to secure your seat.

We also continue the tradition with our regular Friday evening entertainment with the Bistro open for lunch and dinner 7 days a week and don't forget our \$3.50 meal deal coupons are now being accepted.

*David Milne
Manager*

BELLARINE VETERINARY PRACTICE

DRYSDALE

7 Palmerston Street, Drysdale

Ph: 5253 1393

Consulting by Appointment

MONDAY TO SATURDAY

Offices hours: Monday to Thursday:
9.00am - 12.30pm & 1.30pm - 6.30pm

Friday: 9.00am - 12.30pm &
1.30pm - 5.00pm

Saturday: 9.00am - 12.00 noon



Drysdale Motors

FOR ALL AUTOMOTIVE
TUNING AND SERVICING

Specialising in
LPG DYNO TUNING

Have your LPG vehicle Tuned on a "rolling road". If your car runs on LPG And hasn't been dyno tuned Then it hasn't been tuned.

- Roadworthy Testing
- Fuel Injector Cleaning
- Air Conditioner Servicing
- LPG Conversions
- New Car Servicing

44 Murradoc Rd, Drysdale, 3222.
PHONE: (03) 5253 1033.

Acacia Pest Control

For all your environment and
Household pest problems.

Bee and Wasp Removal.

**Have your home treated
For the control of:**

- * Spiders * Ants * Rats * Mice
- * Earwigs * Cockroaches
- * Carpet Beetles * Silverfish
- * Clothes Moths * Fleas

Protect your family and greatest
Investment from pests.

Up to 6 months warranty.

TERMITE CONTROL SPECIALISTS
Licenced to treat and inspect for all timber pests.

Your local pest control bloke.
Ph: (03) 5253 1714
Mobile: 0404 897 783



Your kinda loan for your kinda home.

At Bendigo Bank we understand that buying a home is a big step. That's why we offer a wide variety of home loans that provide a great rate whether fixed or variable plus extra benefits. We make sure you end up with the right loan for your home.

For more information please call into your nearest branch at 44 Newcombe Street, Portarlington, or phone 5259 3266.

Bellarine Peninsula
Community Bank Branch **Bendigo Bank**

Subject to terms and conditions. Fees and charges apply. www.bendigobank.com.au Bendigo Bank Limited, Fountain Court, Bendigo, Vic.3550. ABN 11068049178 (S3733b) (15/09/03)

Springdale Neighbourhood Centre

COURSE GUIDE TERM 1 - 2004

Human
Services



Address: 14 Princess Street, Drysdale

Phone: 5253 1960

Fax: 5253 3050

Email: office@springdale.org.au

Opening Hours: Monday - Thursday 9:30 am - 3:30 pm

Friday 9:30 am - 1:00 pm



Adult Education in
the Community

Your Local Learning Centre.

Educational, Leisure, General Interest Programmes Learning Can Be Fun!!

ENROLMENT & PAYMENT INFORMATION

Enrolment

- To book into a class, call in person to SpringDale Neighbourhood Centre, 14 Princess Street, Drysdale or Phone 5253 1960.
- If you hold a current Concession or Health Care card you will receive a 5% discount on full course fees.
- Your enrolment is confirmed when payment is received.
- Classes must be paid for no later than one week prior to the commencement of class.

- Should a class be cancelled due to lack of enrollments or another reason, fees are refunded in full and enrollees notified.
- Payment can be made in person at SpringDale or by phone.
- People wishing to withdraw from a course must do so prior to commencement of the course.
- Where fees have been paid a refund will be issued with an administrative fee of \$8.00 deducted.
- Where a person withdraws after commencement of a course, no refund will be issued.

Payment/Refunds

- Credit card facilities are available for payment IN PERSON OR BY PHONE.

Privacy

The Neighbourhood House respects your right to information privacy. Information collected and held on SpringDale participants, is kept in accordance with information privacy laws.

HEALTH & WELLBEING - 'FOOD FOR THE BODY & SOUL'

Basic Massage

Learn basic relaxation massage, basic overview of surface anatomy and the benefits and contraindicators for massage. Learn basic knowledge of oils and their uses

Date: Mondays 23rd February
-29th March

Time: 10-12 (6 sessions)

Fee: \$90

Venue: Drysdale Hall,
High St Drysdale

Tutor: Margaret Boylan

Basic Holistic Kinesiology

Participants will learn how to effectively evaluate and execute muscle tests, enabling them to de-stress the body, promote health and administer appropriate remedies.

Date: Sunday 7th and 14th March +
Wednesday 17th March

Time: Sundays 9-5pm/ Wednesday
6.30-8.30pm

Fee: \$135

(Participants will also be required to purchase the book 'Touch For Health' - order through the Tutor)

Venue: Springdale Neighbourhood
Centre (Childcare Room)

Tutor: Hayley Shipp-Tink

For Further Information Ring Hayley
on 52511183. To book call Springdale on
52531960

Yoga Classes

Tuesday Evening Yoga

For relaxation and balance of mind and body.

Date: Tuesdays 10th Feb-30th March

Time: 7.30pm-9pm (8 sessions)

Fee: \$85

Venue: Drysdale Hall, High St, Drysdale

Tutor: Rick Porteous (Inner Cor)

Materials: 1 Rubber mat

Monday Yoga at Portarlington

Exercise through breathing, stretching and relaxation.

Date: Mondays 2nd Feb-29th March
(excludes 8th March)

Time: 9.15-10.45

Fee: \$85 (8 sessions)

Venue: Portarlington Guides Hall,
Sproat St. Portarlington

Tutor: Glenda Breedveld

Materials: 1 Rubber mat

Thursday Evening Classes

Date: Thursday 5th February-1st April

Time: 1.6.00 pm - 7.30 pm

Fee: \$95 (9 sessions)

Venue: Bellarine Peninsula Community
Health Centre, 21 Palmerston
Street, Drysdale

Tutor: Glenda Breedveld

Materials: 1 Rubber mat

OR

Date: Thursday, 5th February-1st April

Time: 2.7.45 pm - 9.15 pm

Fee: \$95 (9 sessions)

Venue: Bellarine Peninsula Community
Health Centre, 21 Palmerston
Street, Drysdale

Tutor: Glenda Breedveld

Materials: 1 Rubber mat

Waiting Lists may apply for Thursday classes

Introduction To Tai Chi

A gentle, relaxing form of exercise. Helps to develop concentration, control and strength.

Tai Chi is wonderful for every-one (including those who suffer from arthritis). Bring a friend, some comfortable clothes and shoes and enjoy the benefits of this age old form of exercise. A journey for the body and the mind. Come and explore!

Date: Tuesdays 10th Feb-16th March

Time: 6pm - 7pm (6 sessions)

Fee: \$55

Venue: Drysdale Hall, High St, Drysdale

Tutor: Faye Blainey

Belly Dancing

Level 1

An easy fun class for beginners where you learn basic movements and simple choreography - great for fitness too!

Date: Thursdays 3rd Feb-23rd March

Time: 6.30 pm - 7.30 pm (8 sessions)

Fee: \$55

Venue: Clifton Springs Golf Club

Community Room

(downstairs near pool)

92-94 Clearwater Dve

Clifton Springs

Tutor: Natasha Dean

Belly Dancing cont.

Level 2

Further develop movements and techniques to build on skills previously mastered.

For those with previous experience (Must have at least one term in Level 1)
Date: Thursdays 3rd Feb- 23rd March
Time: 7.45 pm - 8.45 pm (8 sessions)
Fee: \$55

Venue: Clifton Springs Golf Club
Community Room
(downstairs near pool)
92-94 Clearwater Dve
Clifton Springs

Tutor: Natasha Dean

Reiki 1&2

Week-end Workshop-Expression of Interest

Reiki 1 is for personal use and hands on treatment of others. It includes the positioning of hands and basic methods. Reiki 2 is a continuation of Reiki 1, plus absent or distant healing.

Students will receive a manual containing the history of reiki, hand positions and important basic information necessary to practice reiki.

Date: To be Advised (Term 2; April)
Time: Saturday 10-5pm/Sunday 10-4pm
Fee: \$120 per person
Venue: Drysdale Hall, High St,
Drysdale

Tutor: Lise Baker

Requirements: Comfortable clothing and bring lunch (or buy on day).

Register your interest at the Office
52531960

Alpha Course

Alpha is an opportunity for any-one to explore the Christian faith in a relaxed, non threatening setting. It is low key, friendly and fun and is supported by all the main Christian denominations.

Date: Wednesday 11th February-
7th April(+ Saturday 3rd April)
Time: Wednesdays-7-9pm Saturday
(to be advised)

Fee: \$25 per person

Venue: Springdale Neighbourhood
Centre

For further information or to book
Phone: Gill King on:52512121 or Laurie
on: 52513760

Register your interest at the Office
52531960

FIRST AID COURSES

FIRST AID- LEVEL 1

Participants who complete the module successfully will be competent in managing life threatening emergencies at home, leisure or in the workplace.

Date: Monday Feb 16th-23rd Feb
Time: 7 pm - 10 pm (2 sessions)
Fee: \$70

Venue: Springdale Neighbourhood
Centre (Child Care Room)

Tutor: National First Aid

FIRST AID- LEVEL 2

An Accredited Certificate, valid for 3 years (with CPR updates) required in many courses and work places. Covers all modules taught in Level 1 plus additional emergency treatment and management procedures.

Date: Mondays Feb 16th-March 29th
(excludes 8th March)

Time: 7pm - 10pm (6 sessions)

Fee: Full fee - \$140

Venue: Springdale Neighbourhood
Centre (Child Care room)

Tutor: National First Aid

CPR UPDATE

(Cardiopulmonary Resuscitation)

Do not wait until it's too late. Learn CPR today. It is recommended that CPR updates are undertaken annually.

Date: Monday Feb 16th

Time: 7 pm - 10 pm (1 session)

Fee: \$35

Venue: Springdale Neighbourhood
Centre (Child Care Room)

Tutor: National First Aid

General Interest and Skills

Apply Food Handling and Safety

Great for school leavers, volunteers and those already working in food related areas. This accredited module will give knowledge and skills in correct and safe food handling storage and hygiene.

Date: Tuesdays 16th, 23rd and
30th March

Time: 6-9pm (3 sessions)

Fee: \$60 (\$50+\$10 amenities)

Venue: CFA High St, Drysdale

Tutor: GATE

Beginning Writing Module VBE505

(From AAC Course in Creative Writing)

The purpose of this accredited module is to introduce and give practice in techniques for Creative Writing. The focus is on understanding the creative writing process and on finding techniques most suited to the student's particular purpose.

Date: Saturdays 21st Feb- 27th March

Time: 1-5pm (6 sessions)

Fee: \$70- (\$50+\$20 amenities)

Venue: Springdale Neighbourhood
Centre

Tutor: Amanda Gordon Young

For further information ring Amanda
on 52531960

Intergration Aid

Commencing Term 2

This comprehensive course is competency based and covers practical issues that will be encountered daily by Integration Aides in Primary and secondary schools. This training program includes First Aid Level 2 Certificate and Backcare Lifting Certificate.

Date: Commences :Friday 23rd April
Time: 9-1pm (18 sessions)

Plus First Aid (2 Saturdays) and
Backcare (to be arranged)

Fee: \$150 (\$72+\$78 amenities)
+ \$135 First Aid Level 2

Venue: Springdale Neighbourhood
Centre, Drysdale

Tutor: GATE

For more information Phone Sally on
52531960

Motorists On The Move!

A safety and awareness session on a vehicles basic operations.

A terrific session for any-one who wants to know the foundation of understanding and maintaining your vehicle. This is particularly helpful for new drivers or those who just want to know the very basics to keep safe on the road.

Date: Thursday 25th March

Time: 6.30-8.30 pm (1 session)

Fee: \$30

Venue: Springdale Neighbourhood
Centre

Tutor: Greg Thompson

Participants must be at least 16 years of age. Each participant will receive a handout to take home.

The Summer Garden

Wayne will take us on a journey through the beauty and challenges of summer gardening. Preparing your garden for this season will enable it to withstand the extremes and you to enjoy it without too much heartache and hard work.

Date: Thursday 12th February

Time: 10-12 (1 session)

Tutor: Wayne Long

(The Portarlington Nursery)

Fee: \$5

Venue: Springdale Neighbourhood
Centre.

ARTS & CRAFTS

A Mosaic Workshop

Garden Bird

Sculptural mosaics have proven to be Helens most popular style of workshop. Explore this exciting approach to mosaic making.

Take the stress out of mosaic sculpture. Everything is set ready to go. Begin, finish and display all in one day! Take home your sculpture and new found skills too!

No prior knowledge is required and participants work may be as simple or as intricate as they wish.

Date: Saturday March 6th
Time: 10-3pm (1 x5hr session)
Tutor: Helen Millar

Fee: \$50

Venue: Drysdale Hall, High St Drysdale
Participants to bring an apron or old shirt to protect clothing while grouting. Participants may wish to bring decorative items such as shells, pebbles, buttons and beads suitable for exterior display to incorporate in their mosaic. Bring Lunch.

Make a SunCatcher

Create your own ray of sunshine using crystals and crystal beads. This popular form of decoration looks great anywhere inside your home or in the garden. Terrific as a gift for family or friends. Learn how you can create these beautiful eye catching charms.

Date: Tuesday 9th March or
30th March

Time: 6.30-8.30 (1 session)

Tutor: Megan King (BeadWorks)

Fee: \$30 All materials provided.
(Take home your new creation)

Venue: Springdale Neighbourhood Centre.

Basic Jewellery Making

Learn how to put your own ideas into practice. Create an individual look necklace and a pair of earrings in this fun and interesting jewellery class.

Date: Tuesday 16th March

Time: 6.30-8.30(1 session)

Tutor: Megan King (BeadWorks)

Fee: \$30 All material provided.
(Take home a lovely necklace and pair of earrings)

Venue: Springdale Neighbourhood Centre.

Memory Wire Bracelet

Create this stylish coil like bracelet using Indian glass beads to create an interesting and individual piece of jewellery.

Date: Tuesday 23rd March

Time: 6.30-8.30(1 session)

Tutor: Megan King (BeadWorks)

Fee: \$30 All material provided. Take home your new gorgeous piece of jewellery

Venue: Springdale Neighbourhood Centre.

Decorative Painting

An informal, friendly class led by an experienced tutor. Learn painting techniques and strokes which can be used on all sorts of material (eg clothing, wood, tin) to create a decorative and individual finish.

No materials required to start.

Date: Thursdays 26th Feb-1st April

Time: 4-6pm

Fee: \$60 (6 sessions)

Venue: Springdale Neighbourhood Centre

Tutor: Julie Morison

Watercolours /or Pastels

All Levels Welcome

An opportunity to begin a new interest or to develop your skills further. Our experienced tutor will guide you in further developing your artistic skills and abilities in a friendly and welcoming environment.

Date: Tuesdays 17th Feb-30th March

Time: 10.00 am - 12.00 pm (7 sessions)

Fee: \$72

Venue: Springdale Neighbourhood Centre

Tutor: Brian Close

(Materials list available at Springdale or simply bring any materials you have available)

An Introduction to Stamping and Cardmaking

Personalize your cards for friends and family. No experience necessary or artistic skill required. An easy to learn creative hobby.

Students will learn basic stamping, embossing, working with paper and card. Students will construct 3 cards: flip flop card, male art card, message card with envelope embellishment.

Date: Tuesday 2nd March

Time: 1-3pm

Fee: \$25

Venue: Springdale Neighbourhood Centre

Tutor: Rivendell Cottage

COMPUTER CLASSES

Computer Basics are Introductory classes designed for beginners starting off on their learning about the uses and functions of the computer.

Topics include: mouse control, saving, open/close applications, cut, copying, pasting, inserting/deleting and much more.

Subsidized places are funded through ACFE Funding (Adult Community & Further Education) and are available for those seeking re-entry into the workplace, the unemployed and those over 55 years of age.

All computer classes are held at Springdale Neighbourhood Centre. (with the exception of Computers at Portarlington).

Introduction to Computers

Over 55's

Date: Tuesday 17TH Feb-30th March

Time: 9.30 am - 12 noon (7 sessions)

Fee: Full course fee: \$100

Subsidized: \$60

(\$50 + \$10 amenities)

Venue: Springdale Neighbourhood Centre, Princess St, Drysdale

Tutor: Lyn Brooke

General

Date: Tuesday 17th Feb-30th March

Time: 1.00 pm - 3.30 pm (7 sessions)

Fee: Full course fee: \$100

Subsidized: \$60

(\$50 + \$10 amenities)

Tutor: Lyn Brooke

Or

Date: Wednesday 18th Feb-31st March

Time: 1.00 pm - 3.30 pm (7 sessions)

Fee: Full course fee: \$100

Subsidized: \$60

(\$50 + \$10 amenities)

Tutor: Lyn Brooke

Or

Computer Evening Class

Date: Wednesday 18th-31st March

Time: 6.30-9pm (7 sessions)

Tutor: Lyn Brooke

Fee: Full Course Fee: \$100

Subsidized: \$60

(\$50+\$10 amenities)

Computers at Portarlington

An Introduction to computers.

Date: Thursday 19th Feb- 8th April

Time: 4-6pm (8 sessions)

Tutor: Lyn Brooke

Fee: Full Course Fee: \$100

Subsidized: \$60

(\$50+\$10 amenities)

Venue: Bellarine Health Centre, Fenwick St, Portarlington

Computers - Level 2

(The next step)

Suitable for those who have a basic knowledge of computer use and want to consolidate and develop their skills further.

Includes 10 sessions on: file management, formatting, layout of documents, graphics, introduction to spreadsheets, charts, databases.

Date: Term 1 - Thursday 5th February- 18th March (7 sessions)

+ Term 2 - Thursday 22nd,

29th April +6th May (3 sessions)

(10 sessions in total)

Time: 9.30-12.30pm

Fee: Subsidized: \$85

(For those 55+, unemployed, those re-skilling to return to work)

Full Course Fee: \$140

Tutor: Sue (Lara Computers)

What use is a Computer to Me?

What should I buy?

If you feel that technology has passed you by because you are getting on in years and computers are just for the young, think again! See what you can use computers for and how the internet is a valuable tool for every-one to use. Learn some of the buzz words so that you can acquire hardware and software with some understanding of what you are getting.

Date: Monday 1st March

Time: 2-4pm

Fee: \$ 20

Or

Date: Thursday 18th March

Time: 1-3 pm

Fee: \$ 20

Tutor: Barrie

(Clancie Specialised Services)

Learn to Use Your Digital Camera Workshop

Now is your chance to learn how to use that camera you got for Christmas! A straight talking, practical session. Let the expert answer the questions you are unsure of.

Bring your camera along and learn to enjoy the art of digital photography.

Date: 23rd February

Time: 12.30 -3.30 (1 session)

Fee: \$30

Tutor: Terry Oakley

PC USER GROUP

This is a new Springdale Group we are trying to get off the ground. The aim is for people to meet monthly (the 2nd Tuesday of each month) to discuss computer problems and share particular areas of interest.

Date: Next Meeting Tuesday

10th February

Time: 4-5.30 pm

Fee: \$2 per meeting

(free tea and coffee)

Facilitator: Brent Godkin

Ring Springdale on 52531960 to register your interest.

CHILDREN'S PROGRAMS

MUSIC AND MOVEMENT

Enjoyment of music, dance and song to encourage the development of beat, rhythm, tempo, pitch and harmony - all while having fun.

This is a great way for little ones to develop confidence, self-esteem, concentration, memory, listening, language and self-expression.

Date: Tuesdays Commences 3rd

February -30th March

Time: 9.15 am - 10.00 am

2 & 3 year olds

10.15 am - 11.00 am

3 - 5 year olds

OR

Date: Thursdays Commences 3rd

February -30th March

Time: 9. am -9.45

Fee: \$50 per term

Venue: Drysdale Hall, High St. Drysdale

Tutor: Trish Redman

OCCASSIONAL CARE

Recommences 2nd February

A three-hour session will give your child an opportunity to socialize and play with other children in a supervised program with qualified staff.

Sessions are: Monday, Tuesday,

Wednesday, Thursday and Friday

mornings: 9.00 am - 12.00 pm

Wednesday afternoon: 1.00 pm - 4.00 pm

For further information please phone

the Centre on 52531960.

Sessions run during school terms.

BELLARINA TOY LIBRARY

The Toy Library is open Saturday mornings 10.30 am to 11:30 am.

We have some fantastic toys to borrow (ages 0 - 6 years) so come along and see what we have to offer!

SPECIAL INTEREST GROUPS

Weekly Craft Groups

Opportunities to meet people, learn new crafts, or teach others your speciality.

Meet weekly during school terms.

New members welcome.

Wednesday Morning Group

(Sew & Sews)

10:00 am - 12:00 noon

Wednesday Afternoon Group

(Whichcraft)

1:00 pm - 3:00 pm

Friday Afternoon Craft Group

1:00 pm - 3:00 pm

Springdale Friendship Patchwork and Quilting Group

The aim is for interested, like-minded people to bring along their current works (or any unfinished projects), then to simply get together and help one another in a friendly atmosphere.

Meetings take place on the second Thursday of the month at Drysdale Hall, High St Drysdale and the fourth Tuesday at Palmerston Court Drysdale

Time: 10.00 am - 12.00 pm

Springdale Singers

A mixed voice choir meeting on Tuesdays from 1:30 pm to 3:30 pm in the Drysdale Community Hall. New members welcome. Persons interested may come as visitors on any Tuesday.

Writers Group

This group meets the second Thursday of each month 1:00 pm - 3:00 pm at Springdale Neighbourhood Centre, 14 Princess Street, Drysdale.

New members welcome.

Ring Springdale for more details.

Queenscliff & District Woodworkers

Meet first and third Monday of the month at 2:00 pm at Drysdale Community Hall, High Street, and Drysdale. New members welcome. Just turn up if you are interested.

Enquiries to the Secretary, Ray Roberts, Tel: 5251 2183.

Friendly Writers Group

Meet every second Monday evening at the Centre (7-9pm).

Ring Springdale for further information. Start 2nd February

EXPRESS YOUR INTEREST

Springdale is always interested in ideas about what you would like to do at the Centre.

If we can get a few more like-minded souls together, we may be able to get your idea up and running. We are also happy to refer if we know someone else already has what you are looking for. Happy Learning!

Career Information Resource Area

Springdale has begun to develop a Career Information Resource Area at the Centre.

We are building up general information about the types of careers available to people today.

If you are mature age, it may provide a first step in exploring a new career/ life direction!

Come in and have a look and if you have any information or a story to share with us about a career change, we'd love to see or hear about it. Your story may inspire others.

OTHER SERVICES

Springdale also provides facilities to the public which include:

- > Computer access (Ring to check availability)
- > Internet & E-mail access (Ring to check availability)
- > Photocopying
- > Faxing
- > Hall and room rental

BELLARINE SES NEWS & ROAD SAFETY TIPS

Bellarine SES has had a reasonably quiet month for October/November as far as storm damage goes, now that the Spring winds have died down. We attended the Geelong Show as wardens and had a successful Road Crash Rescue demonstration at the Moolap Primary School Fair. Grade 1 & 2's had a close up look at our Road Rescue vehicle on a visit at Barwon Heads Primary School.

There have also been several call outs to car crashes - we don't refer to them as "accidents" - so now that the Christmas holiday period is almost upon us and more people are out and about on the roads it is a good time to take heed of the following safety tips. We don't want you to become another statistic. So have a Merry but Safe Christmas.

Before you drive:

- * Maintain your vehicle. Check that your tyres and brakes are in good condition. Are your tyres correctly inflated? Check that all your lights are working.
- * Wiper blades should be in good condition for wet weather driving. New rubber blades are not expensive.
- * Check that seatbelts and child restraints are fitted correctly.
- * Don't drive if you are feeling tired.
- * Be aware of the effect on driving of any prescription medication you may be taking. Ask your doctor or pharmacist if you're unsure.

When you are driving:

- * Be patient and obey the road laws
- * Be alert and observe road signs

- * Be aware of what other drivers are doing - don't assume anything about what another driver will do.
- * Drive according to the road conditions - slow down in wet weather.

On longer trips:

- * Share the driving.
- * Plan to include breaks every 2 hours.
- * Avoid alcohol.
- * Stop before you become tired.

For more information about the Bellarine SES, phone Lorraine on 52512 893. The unit welcomes any interested persons, especially anyone available for daytime response i.e. 9am-6pm Mon to Fri.

VICTORIAN PUBLIC HOLIDAY DATES

Event	2004	2005
New Years Day	Thursday 1 January	Saturday 1 January*
Australia Day	Monday 26 January	Wednesday 26 January
Labour Day	Monday 8 March	Mon 14 March
Good Friday	Friday 9 April	Friday 25 March
Easter Saturday	Saturday 10 April	Saturday 26 March
Easter Monday	Monday 12 April	Monday 28 March
ANZAC Day	Sunday 25 April*	Monday 25 April
Queen's Birthday	Monday 14 June	Monday 13 June
Melbourne Cup Day (Melb. Metro area only)	Tuesday 2 November	Tuesday 1 November
Christmas Day	Saturday 25 December*	Sunday 25 December*
Boxing Day	Monday 27 December	Monday 26 December

* Denotes no day in lieu for this public holiday.

Note: These holidays also apply to the Non-Metropolitan Region, with the exception of Melbourne Cup.

LOST PROPERTY

Property found in the Drysdale area approx. 18 November, 2003, containing a photograph of children and other items.

Please contact Snr Constable Cockburn, Drysdale Police Station on Tel: 5253 1763 if you believe it could be yours.
ID required.

DON'T SELL YOUR PROPERTY ...

Until you talk to us!

- We guarantee you:**
- Honesty.**
 - Ethical practice.**
 - Professional Service.**
 - Vendor's interests paramount.**
 - Feedback on inspections.**
 - Genuine sale valuations.**
 - Highest prices achieved.**



Bayshore FIRST NATIONAL
REAL ESTATE

26 High Street, Drysdale. Telephone 5251 2610

Drysdale

Your One Stop
Plumbing Shop

Plumbtec

Bathroom Kitchen & Plumbing Supplies



PH: DRYSDALE 52531268 GEELONG 52221268
TANKS FOR DRINKING WATER & GARDENS

BUILDER

HIA
MEMBER

Paul Jones Registered

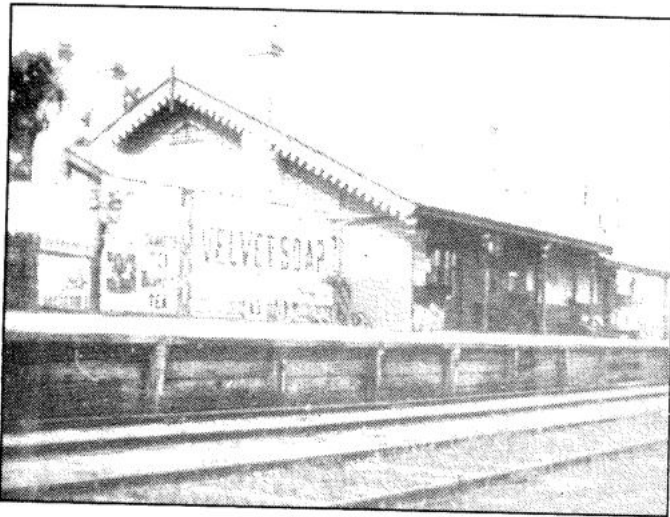
B.P.B

Ph. 52 513934

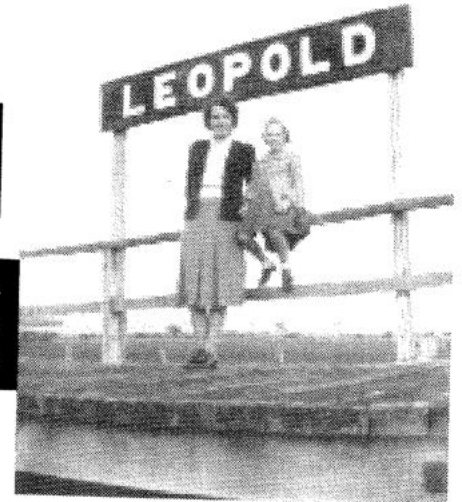
NEW HOMES ~ EXTENSIONS ~ AIR CONDITIONING

Mobile 0419 354259

2004 - Celebrating 125 years of rail service to the Bellarine Peninsula Community !



DRYSDALE 1916
Photo K Filbay



LEOPOLD -
1940's Photo
Anne Rantall

In May 1879, the South Geelong - Queenscliff Railway was opened by the colonial Governor, the Marquis of Normandy. The only stations provided initially were Drysdale & Queenscliff. The Drysdale complex included several goods sheds, a cattle yard, the towns first post office and soon an 18 ton cart weigh-bridge was added to complete the scene. Later stations were added at Moolap, Leopold, Kensington Hill, Curlewis, Scarborough, Mannerim & Ocean Grove (Marcus). Passenger traffic was heavy until WW1, after which the line began its slow decline. Buses were whisking passengers to & from Geelong far quicker than the slow mixed goods and passenger trains and as a result, the regular passenger service ended in 1931. WW2 saw a massive increase in both military & ordinary goods traffic and 2 return goods trains daily were running along with troop specials. After WW2, the service again declined with only a fortnightly goods train & a few summer excursion trains using the old track. Early in 1959 the line was closed. In November of that year it reopened mainly to service the shell grit plant at Lakers Siding near Queenscliff. This traffic along with the popular summer excursions kept the line open until November 6th, 1976. The final train being a steam hauled special. The Geelong Steam Preservation Society operators

of the 'Belmont Common Railway' in Geelong took over the Drysdale-Queenscliff section and tourist trains began operating into Drysdale again from May 1980. This year is a big one for us and we need your assistance more than ever to ensure this year in particular commemorates the anniversary in a fitting manner.

Volunteers, particularly Station staff, Kiosk Operators & General customer service staff are urgently required.

Please see Paul or Kate at the station during train running hours or phone station on 5251 3725. Or call us A/H on 5257 1413. We provide ALL training (this includes train crew volunteers)

A reminder that our new book, "Trains Troops & Tourists" A history of the Queenscliff - Drysdale - South Geelong Railway is due for release in May. Many thanks to the local people who assisted in many ways to bring the project to fruition. The book will be available at many outlets in the district, in some Melbourne outlets or from the railway shops at Drysdale or Queenscliff stations.

Summer on the BPR is a busy time, with many extra trains running day & night.

Our recent 100th birthday for Loco No.6 went very well, and the winner of the family pass was Carey Bell & family from Clifton Springs.

No 6 herself had a lovely time, and she wants to pass on her thanks to all the boys & girls who helped her celebrate.

Another old timer you may have seen lately running on the line is our USA built, 1916 'Vulcan' saddle tank loco. This engine had not run for about 18 years, but you would think it was brand new! Our loco boys have done a truly magic restoration.

And yes kids, it has a name - 'Arthur'!

The railway was also represented in the 'Queenscliff Wedding Expo' with Kate & Co transforming our dining car into a mobile reception hall! If you are interested in using the BPR for weddings or functions, pop in to the station and view some photographs on display.

As summer is filled with trains running charters at all hours, please take extreme care at the level crossings. It is a far more pleasant view from IN the train, NOT from UNDER it.


Take Care

Paul & Kate

*Drysdale Historic Railway Station
Bellarine Peninsula Railway.*

Steam trains every Sunday at 12.15 & 3.30 pm -

24 Hour Info Line 5251 3725



Drysdale Physiotherapy & Sports Injury Clinic

- Spinal ■ sports ■ Manipulative ■
- Arthritis ■ Workcover ■ TAC ■ Vet Affairs ■
- Hydrotherapy ■ Exercise Rehabilitation ■

Peter Terry MAPA, MPA
and associates

Ph. 5251 2958

27 - 29 High Street, PO Box 179, Drysdale 3222

Peter Lucas Video

Professional coverage of your Wedding or Special Occasion.

Ph: 5251 3335
Mobile: 0409 864 684

Salvation Army Family Stores

Mortimer St. Drysdale
Ph. 5251 2475

Plenty of Bargains
The Place to Shop

Come and see us We are here to Help You

Friends of Ann Nichol House

We look forward to the building extensions of Ann Nichol House which will commence in the early months of 2004.

The friends of A.N.H. will hold their next meeting on Thursday, February 26th at 9:30 am at "The House".

For more information phone President, Jean Cull 5259 2486.

The friends of Ann Nichol House continue to fund raise for both the 30 bed/ensuite extension and for the comfort of the residents.

Thank you to all who donated goods to our 10 cent auction on

January 8th and donated craft, for our trading table at the Portarlington Festival. Both events were a great success.

Food Hamper won by Ann - Indented Head

*Food Pack,
F. Stotten - Portarlington*

*Crochet Rug,
R Bell - Portarlington*

*Teddy,
G Findley - Wallington*

RAV MOURNS LOSS OF PARAMEDICS

Paramedics, administration staff and management of Rural Ambulance Victoria are today mourning the deaths of two of their colleagues from the Metropolitan Ambulance Service, who tragically lost their lives in a crash last Friday, while responding to an emergency.

"Robert Bland and Phillip Oakley were Ambulance Paramedics from the MAS Healesville branch and both officers were personally known to a number of RAV staff, said CEO Doug Kimberley.

"The loss of two of our colleagues in such tragic circumstances will no doubt have a profound impact on all ambulance staff and their families, even those who did not personally know Robert and Phillip".

RAV's Acting Director of Operational Services, Tony Walker, today paid tribute to the two Paramedics.

"Robert Bland had been a Paramedic for 23 years and was a well regarded member of the Ambulance community. He was selfless in

servicing the community and had a commitment to professional and clinical excellence", said Mr Walker.

"As a student Paramedic, Phillip Oakley had developed a reputation for dedication and commitment to the community and his family. He too was well regarded within the Ambulance fraternity".

Mr Walker said RAV Board Members, Management and staff had expressed their deepest sympathy to MAS and its staff.

"We have offered to provide whatever support is required during this difficult period. To date MAS has requested assistance with Peer Support, which we have facilitated".

"In addition, a number of RAV staff have offered to assist MAS by volunteering to backfill shifts to allow MAS staff to attend the funerals of their colleagues".

Mr Kimberley and Mr Walker also expressed their deepest sympathies to the families of the two men and expressed profound sorrow at their loss.

CLIFTON SPRINGS PLAYGROUP INC.

Playgroup is open on
MONDAY & WEDNESDAYS
10.00 to 11.30am

TUESDAYS,
THURSDAYS AND FRIDAYS
9.30 to 11.00am
(except school holidays)

At the CLIFTON SPRINGS
COMMUNITY ROOMS
(by the open air swimming
pool at the Golf Club)

Playgroup is for children aged
from Birth to Kinder.

A warm welcome is extended
to you. Come on any day and
meet new friends

FOR MORE INFORMATION
PHONE
MICHELLE: 5253 2438
OR KAREN: 5251 1792

NEEDLE SYRINGE PROGRAM

Are you using drugs?
If so, then protect yourself from HIV and
Hepatitis C.

Obtain clean fits from the Drysdale
Community Health Service
21 Palmerston Street, Drysdale.

A CONFIDENTIAL service.
No questions asked.

SENIORS SPECIAL

Lawns cut & edges trimmed

\$18.00*

1st 10 customers only

Ph: 5250 4005

0425 777 304

KINESIOLOGY AND TRANSITIONAL THERAPY.

Hayley Shipp-Tink
dip.hol.kin

*Harmony
for Body, Mind and Soul.*

70 High st. Drysdale

Phone 52 511 183 or 0407 287 297

MOBILE FOOTCARE

Sally and Doreen
specialise in elderly people.
We come to you.

\$10 per visit

Sally: 52583643 or 0414 291 536
Doreen: 5254 3210 or 0408 313 503

Ladies Probus Club of Bellarine Inc.

Registered No A14696T.

To all readers of the Springdale Messenger, and our Probus Club members, a very happy New Year.

Our Christmas Luncheon was held at the Springs Function Centre on our usual meeting day. The large dining room was used for this event and we all felt at ease with the decorations around the room and the tables looked so nice. It was also lovely to see the view of the bay. The room was quickly filled and everyone looked good in their Christmas Outfits.

The menu provided by the Springs was excellent, starting off with warm finger food which came round several times so we could try all the varieties of spring rolls, and savoury biscuits and fillings. Yummy! This was accompanied by wine or fruit juice.

We pulled our crackers and read the jokes, donned the paper hats and were ready for the Presidents address

immediately after the main course. This was the best Christmas Lunch served at the Springs, it was hot, plenty of meat turkey pork and ham, and seasonal vegetables. Following this course the first item of entertainment started. The entertainment this year was provided by our own members, and they did a great job, thoroughly enjoyed themselves with the members looking on and joining in with everything when asked. The first item was a solo sung by Iris Astill accompanied by Tod Crump on the electric keyboard, following on with Christmas carols led by Iris, accompanied by Tod and Sylvia Spruit on the flute. The audience were asked to join in and this ended the first segment, the Christmas pudding and Pavlova were on the way to be served, and they were also lovely. The next item was hilarious, featuring Nan Almond and Val Lewis who acted out a Skit without words of a lady and a tramp taking tea in the park.

The Notorious Drysdale Square Dancing Group did two dances and received such worthy applause, that someone booked them for the New Years party at the bowls club.

The final segment was for a few more carols, with audience participation.

We enjoyed the coffee and mince pies whilst Bev read us a funny joke from a member.

Bev Hanson gave out the birthday cards to those who have a birthday in December.

We were informed that Carol McCarthy from Harvey World Travel is our speaker for January.

The trips have been a bit disappointing this year, when so much effort had been put in by the clubs organisers, members are not able to fill the coaches so the Macedon trip had to be cancelled. Lets hope things will improve next year.

In all it was a most enjoyable day.

Yours in friendship. Iris Liz Tolton.

OCEAN GROVE MEMORIAL RECREATION RESERVE COMMITTEE OF MANAGEMENT

ACTIVITIES

At the recreational hall, 123 The Avenue, Ocean Grove:

- Dancing (after school) - Badminton & Calisthenics (February)


Volleyball, Basketball, Table Tennis courts are also available for group bookings by appointment only from 5/01/04. For further information contact Therese on 52551 641.


CARPET STEAM CLEANING
MARICK CARPET CLEANING
DICK BOLAND
Ph 5259 2217
Mobile 0412 517 065
Carpets, Lounge Suites
Car Upholstery Stain Guard Available
FREE QUOTES

BELLARINE FENCING Co
For all your fencing
& gate needs,
- Picket - Paling -
Heritage Wire.
Phone: Andrew & Gayle Baylis
on 5251 3090 or 0417 544 887

Chui Yuan 酒翠
Chinese Restaurant 家園
(B.Y.O.)
TAKE AWAY & HOME DELIVERY
FUNCTIONS & GROUP BOOKINGS A SPECIALTY
QUALITY & CLEANLINESS ARE PARAMOUNT
REASONABLE PRICES
* \$6.50 (TAKE AWAY LUNCH SPECIAL)
Ph. 5253 1788
Shop 5, 26-28 High St. Drysdale, 3222.

MAGGIE GOVE N.D.
Bowen Therapist
& Naturopath
Member of A.N.T.A.
Drysdale: Clinic 03-5251 1188
Ah 03-5253 2230
(Rear of Elegant Profile)


The Drysdale...
COFFEE • LUNCH • DINNER
Open 7 days reservations 5251 2301
• All new sportsbar • Kids playground
• Alfresco beergarden
DRYSDALE HOTEL High Street, Drysdale.


MORTIMER PETROLEUM
PETROL STATION & CONVENIENCE STORE
97 High Street Drysdale Phone 5251 2603
Petrol, Autogas Bait & Fishing Supplies
CAR WASH
Open 6.00am-10.00pm

DIABETES EDUCATION GROUP.

If you have diabetes either newly diagnosed or if you have had it for many years : this is a group you really need to do .Over the 4 weeks you have sessions from Dietitian/ Diabetes Educator / Podiatrist GP and Pharmacist.Many aspects of managing diabetes has changed and research supports the belief that if you can manage your blood glucose levels you reduce your chances of developing complications. This will be your last opportunity this year for this very beneficial program.

WHEN: This group runs throughout the year and the first group for 2004 begins Febuary 17th(Tuesday)
TIME: 2pm until 4pm.

WHERE: Anglican Church Hall St Leonards

COST: \$5 per session/ Partners welcome no charge.

TO BOOK AND FOR FURTHER INFORMATION CALL:Margaret Ahern/ Portarlinton Health centre 52592537

CHRONIC OBSTRUCTIVE PULMONARY SUPPORT GROUP.

This is a new group that has been formed to assist people with any form of Chronic Respiratory Disease either chronic bronchitis/ emphysema or any respiratory problem that restricts their lifestyle.

The group meets monthly: have a presentation re some topic of interest, followed by a supervised exercise session and then time for discussion and a cup of tea.

If you would like to know more re this program please call:Margaret Ahern/Primary Care Nurse. Portarlinton Community Health Centre. 52592537.

First meeting for 2004: Wednesday January 28th

TIME: 1.30PM UNTIL 3.30PM

WHERE: Drysdale Community Health Centre.

COST: Gold Coin donation per session.

No need to book just come along.

GUEST SPEAKER FOR JANUARY: Ms Lyn Sims/ Occupational Therapist/ Bellarine Community Health/ Topic: Relaxation/ Energy Saving tips. Come along and see if this group is of benefit to you, even if are not able to exercise you can still meet with others and take advantage of information given.

BETTER HEALTH SELF MANAGEMENT PROGRAM.

What is it? This is a 6 week program originally planned by Arthritis Victoria for people with any form of Chronic Illness.

It is a course that covers:

- How to manage your symptoms better
- How to communicate more effectively with your doctor.
- How to make daily tasks easier.
- How to lessen frustration
- How to fight fatigue
- How to get more out of life.

WHEN: This course will be running again this year. Dates and registration times will be advertised in local papers.

For more information contact: Margaret Ahern/ Primary Care Nurse/ Portarlinton Community Health Centre. 52592537.

WALKING GROUP.

A group of walkers meet @Portarlinton Community Health Centre on Tuesdays @0930 and walk for approx. 1 hour then meet for a cup of tea and a chat.

This is a great way to meet new people and to get started with walking. Walk at your own pace and own ability -no set time or route. This group is about encouraging physical activity and social contact. Group will resume Tuesday 13th January 2004. At 0930.

Call Portarlinton Community Health Centre for more information. 52592537.

BELLARINE AUTO SERVICES

Quality Mechanical Repairs
Tuning - Servicing
LPG Conversion - EFI
Tyres - Batteries - RWC
Licensed Vehicle Testers

Mortimer St. Drysdale
Proprietor: J. Pamplin

Ph. 5253 1644

BONE MARROW RECYCLE SHOP

High St. Drysdale.

Donations of good clothing and brick-a-brac needed.

All proceeds from our shop go to help those with Leukaemia



Quality Butcher

PETER HOMMELHOFF

HOMMY'S

QUALITY MEATS

For something new and different
16 High Street, Drysdale 3222.
Phone: 5251 2270

CONCEPT CAMPERS

Manufacturers and repairers of Annexes, Awnings, Tonneaus, Tarps, Horse Rugs, Boat Covers Custom Built Camper Trailers
Caravan and Boat Storage
Discount for senior citizens

Phone (03) 5253 2569
61-63 Murradoc Rd. Drysdale.



FLEA BUSTERS

MOBILE DOG WASH
Clipping, Bathing & Grooming

"A complete service by the true Professionals".

5281 1711

Professional Service For All Breeds At Your Own Home

DRYSDALE REMOVALS & STORAGE

Local, Country,
N.S.W. & S.A.

PH. (03) 5251 3674

STEWART McARTHUR - MEDIA RELEASE

Great Southern Waters Ltd. Indented Head Awarded 'New Apprentices' Excellence Award

Great Southern Waters Ltd, Indented Head has been selected as a recipient for the 2003 Minister's Awards for Excellence for Rural and Regional Employers of New Apprentices, Stewart McArthur, the Federal Member for Corangamite has announced.

Mr McArthur said Great Southern Waters Ltd has been awarded the prestigious prize of \$5,000 for their outstanding commitment and support for good practice approaches in training apprentices in their local communities.

Great Southern Waters Ltd, a land based marine aquaculture company farming abalone and mussels, was one of three companies in Victoria to be awarded.

There were in total 16 prizes of \$5,000 to companies across the country.

The Australian Government's Minister's Awards for Excellence recognise rural and regional employers who are committed to providing staff with nationally recognised qualifications and demonstrate good practice approaches in training new apprentices.

Mr McArthur said he was personally delighted that Great Southern Waters Ltd had been given this award.

"I congratulate and commend the company for their commitment. Apprenticeships can change young people's lives by providing relevant skills, work experience and build confident careers," said Mr McArthur.

For further information regarding the New Apprentices program telephone 1800 639 629 or visit their website www.newapprentices.gov.au

DRYSDALE LADIES PROBUS CLUB INC.

REG NO. A0021357E

Christmas is now behind us, so too are the "Break Up" parties and celebrations, "New Year" celebrations and "Australia Day" activities, and we get down to another year of Happy Probus meetings, and friendship.

March means our A.G.M. and there are some positions on our committee to be filled, and we trust there will be members willing to nominate for these positions and give back to the Club a little of what they have taken from it. In all walks of life there are always those who love to take, take, and give nothing in return, and we hope that this isn't the case in "Our Club", and we can look forward to another happy year of friendship and harmony.

At our February meeting we will have Mr Bruce Lowenthal from Port Fairy talking about "hearing dogs".

Wishing everyone a great New Year. Stay healthy and happy! Until next month.

Glad Sharp

PENINSULA PLAYERS INC.

A new year and a new selection of plays to be performed during 2004.

This year Peninsula Players will present plays written by Australian playwrights, the first being "Away" by Michael Gow to be directed by Tony Wright.

Auditions for this play will be held on Monday, February 2nd and Wednesday, February 4th at Drysdale Community Hall at 7:45 pm. All welcome.

Performance dates for "Away" are April 28th, 29th, 30th and May 1st, 2004.

For further information phone Rhena King on 5251 2431.



**DRYSDALE
CARPET COURT**

**CARPET - VINYL
CERAMIC TILES
FLOATING WOOD
LAMINATE FLOORS**

Proprietor: Neil Petrie
Phone: 5253 1855 Mobile: 0419 519 030
63 Murradoc Road, Drysdale.

**DRYSDALE
KITCHENS**

CABINETS & JOINERY

PH: (03) 5253 2774

EST. 1986

**SOLICITOR
&
CONVEYANCING**

Basil Ristevski LL.B

5251 3453

Robert Tucker Piano Services
C/- Tuckerberry Hill.

Qualified Piano Tuner
and Member of Piano Tuners and
Technicians Guild of Australia.
Tuning, Regulation,
Restoration and Repairs.

Phone: 5253 3438

Clifton Springs Golf Club Play By The Bay

Great Food -- Great Views -- Great Prices

TRY OUR FABULOUS \$6.50 LUNCHES

KENO ... KENO
NOW PLAYING

(Monday to Friday only)

Social Membership
Only \$5.50

Golfing Memberships
now available
only \$450.00

February
Live Entertainment
(7.30pm-10.30pm)

Friday 6th - Warm Sands
Friday 13th - Shaun Keet
Friday 20th - Kiss & Tell
Friday 27th - Peter Perez



Sunday to Thursday Evening
\$3.50 Meal Deal
Buy one main meal off our regular menu and
receive another
of equal or less value for only \$3.50
on presentation of this coupon.
(not valid Public Holidays and Long Weekends)
VALID until Feb 29th 2004

18 HOLES NOW OPEN
COME AND TRY OUR COUCH FAIRWAYS

BOOKINGS PHONE 52 531488

BABBA ... BABBA... BABBA

**BACK BY POPULAR DEMAND
SAT FEBRUARY 14TH
\$40.00 PER PERSON
(includes 2 course meal)
2ND SHOW
FRIDAY FEB 13TH
Don't Miss out **BOOK NOW****

Phone Bookings-52513391

SPORTS REPORT

by Brent Diamond

Teague's basketball on a roll



Just weeks after competing in Canada, Bellarine basketballer Anna Teague represented Victoria in the 2004 Australian Basketball Country Cup at Albury-Wodonga between January 11 and 17.

There were teams competing from all Australian states as well

other teams coming from China and New Zealand to compete for country basketball's greatest prize.

Teague was excited to be selected in the state team after representing Geelong in the 2003 Jasper Place High School Rebels world-wide basketball competition in Canada late last year.

"It's an awesome experience - I started playing basketball in grade five but it's all just started happening this year for me," Teague said.

"It was so different in Canada because they play so differently to us but just to be able to play against them was great," she said.

Amazingly, Geelong and Sandringham were the only two Australian representatives and both finished in the grand final play-off, despite teams from all around America and the Canadian region.

"The grand final ended up being against us two so it was a bit boring, but we (Geelong) won," Teague said.

"Over there, they're not extremely aggressive whereas all our girls like to be a bit rough and aggressive and get in and have a go,

so I think they were all a bit shocked by that," she said.

Teague was selected in the Geelong team along with Kylie Morrissy, Ashley Salter, Prue Kenny, Charmaine Ferguson, Jess Gallagher, Keira Buareschi, Kathy Asmuffen, Lauren Fraser and Karina Sproal.

Geelong Basketball coach John Salter is looking forward to watching Teague make the most of her basketball career, after winning the Most Valuable Player award in the Canadian tournament at just 16-years of age.

"She's only a young one but she's incredibly strong and she is an absolute wizard and she will do very, very well. She's the one to watch out for in the future, she's got amazing potential," he said.

Kylie Morrissy and Gemma Koehler were selected alongside Teague in the Victorian squad, however Koehler chose not to take her place due to her recent Australian Institute of Sport scholarship.

Drysdale looking for their second flag

The Bellarine Peninsula Cricket Association looks destined for another tight finish to the season with a battle between Drysdale, Queenscliff, St Leonards and Portarlington for the A-grade premiership.

Drysdale are currently on top of the ladder and looking for their second A-grade premiership in more than fifty years.

While Portarlington are looking to add to the three consecutive

premierships they have won in recent times.

Drysdale President Greg Scott said his team is in the best position since their one and only premiership win in the 2001-02 season.

"I think it is a lot more even side. Our batting is probably the strength if they can bat right down - the side's got the ability to be able to respond to any situation," Scott said.

The appointment of Darren Barmby as coach at the start of the

season has given the team the confidence to excel.

"Darren's very level-headed and he's been to grand finals before so he's well aware of what's required from the team," Scott said.

"His organisational skills are fantastic. He can tell you tonight what we're gonna do at training on the end of March, he's really well organised and the variety at training has been great too. There's blokes enjoying coming along, we might play touch footy or baseball or something a little bit different of a Tuesday night just to break up the normal run of the mill stuff which makes it good," he said.

Rob Malcolm, Jonathan Richards, Brendan Sharp and Kane Harding have stood out over a consistent Drysdale season where only one game has been dropped for the season to rival St Leonards.

Malcolm continues to add experience after playing more than 300 games while Kane Harding has been



18-20 HIGH ST. DRYSDALE.

OPEN 7 DAYS A WEEK

11am - 4pm

All Public Holidays except: Good Friday, Anzac day, Christmas day, Boxing day and New Years day.

New Members always Welcome

Ph: 5251 1605

The *Life*  *line* Shop

Good quality clothing & bric-a-brac.
Donations of clothing & bric-a-brac
always welcome.

"Village Walk"

Shops 9 & 10, 21

Clifton Springs Rd. Drysdale.

Ph: 5253 2168

the most improved after consolidating a spot in the team

"He (Malcolm) would certainly be the most experienced and the longest serving member of the club," Scott said.

"Jonathan Richards he's got a spot in there and he's performing well. Brendan Sharp after a lay-off for 12 months is really performing well. He would be the leading wicket-taker in the club in the A's. Kane Harding after being in and out of the A's - has got himself a spot in the middle batting order," he said.

However, St Leonards appear to be Drysdale's biggest danger with Dean Gray and Clinton McCarthy having terrific seasons.

Queenscliff have continued to surprise the competition after finishing in the lower end of the ladder last season. While Portarlington will again provide another challenge after winning their last five games.

"I don't think any of them has the batting depth that we have. But again it's a funny game and anything can happen and it depends on the day - and one partnership or one good spell of bowling could certainly win a game for you," Scott said.

Drysdale are currently leading the race for the Club Championship with the club on top of the A, B2 and D1 divisions.

"Our guys are certainly focused and committed. Darren's excellent in that area to make sure they keep their minds on the job and doesn't let them get ahead of themselves," he said.

Drysdale have backed their momentum on the field with a strong reception off the field. With over 230 playing members in Six senior teams and eight junior teams, as well as the Milo cricket competition played on Friday nights for five to nine year olds - the cricket club is looking in better shape than ever.

Registration night for Vollyball Mixed Social Autumn Season 2004 is on Friday 30/01/04 with competition beginning on Friday 06/02/04 at the Surfside Centre, Shell Road, Ocean Grove.
For more information - contact Kevin Wells on 52512266 or Anne Kuklych on 52562039 for further information.

Huge coup for Ocean Grove and Queenscliff

Former Collingwood star Jarrod Molloy looks likely to move to Ocean Grove and wear the red and white in 2004.

Molloy is believed to be keen to move to the area and will give the Grubbers coaching staff a definite answer at the end of this month after returning from holidays in Japan.

He would not be expected to make an appearance in the senior team until the second half of the season - in a bid to play BFL finals.

With Mark Neeld furthering his coaching career at St Josephs, Damian Clark has been appointed coach of the reigning Premiers over the summer period and will be looking to embark on the team's fifth consecutive premiership.

However, the team will have to do it without star key position player Mathew Jovanovic who has moved on to the Tasmania Devils in the VFA, while James Dalton has followed Neeld to St Josephs.

Queenscliff have gone on a recruiting spree over the pre-season, signing 16 new players including former Collingwood and Sydney midfielder Mark Orchard, Subiaco gun Mark Gostlow and former Queensland midfielder Stephen McLeod - in a bid to improve on their sixth placing in 2003.

2003 runners-up Geelong Amateurs have added Sam and Nick Casboul to their list before losing Justin Mahoney to Werribee.

Meanwhile, former AFL champion full-forward Tony Lockett said he will not be making another comeback - at least not in the BFL.

The leading AFL goal-kicker of all-time is currently on holidays in the Portarlington area over the summer break.

However, the 37-year-old will return to his forward-coaching role at the Sydney Swans when the AFL pre-season competition kicks-off in February.

Don't miss Brent Diamond's comprehensive preview of the 2004 BFL season in the next edition of the Springdale Messenger - Your free community newspaper.

New coaching blood for Hawks

Drysdale's pre-season coaching shake-up has continued with Joe McLean appointed as assistant coach for 2004.

McLean's appointment to the Drysdale coaching panel follows the appointment of Brian Cordy as senior coach late last year, after former coach Adam Richardson stepped down.

McLean comes from the Leopold Football Club and is looking to further his coaching career at the Hawks.

Drysdale President Allan Bliss said McLean would bring a new fitness approach to the team after being an experienced Physical Education teacher.

"We're just looking for a new approach this year and we think Joe can offer a different approach through his experience as a fitness teacher and through promoting some of our juniors," Bliss said.

Adam Richardson and Glenn Kilpatrick will continue to assist with the coaching which will provide a formidable coaching panel for Drysdale.

Meanwhile, the ever-reliable Shane Kennedy has returned to the club after a season away from the game - while 2003 recruit Simon Keating has decided to call it quits and head overseas after a one-year stint with the Hawks.

Uniting Care in Australia **VILLAGE OP SHOP**

Come and browse through our range of good quality ladies and mens wear, plus our selection of young adult and childrens clothing and our range of small household goods.

DONATIONS OF GOOD CLEAN CLOTHING AND SMALL HOUSEHOLD GOODS REQUIRED

Phone: 5251 3640.

Shop 19/4 Village Walk, Drysdale.
Hours: Mon - Frid 10.00a.m. - 4.00p.m.
Sat - 9a.m. - 12 Noon.



**Jim's
Electrical**

Your local contractor

REC 14581

For all repairs & installations

131 546

www.jims.net



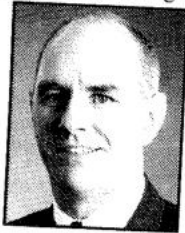


Is now the right time?

The market is up, the market is down, property prices soar, property prices slow. Everyday you hear conflicting messages, most of which appears to be based on what sounds good on the day.

At the Professionals Real Estate the only sound you will hear from us is sound advice. We'll give you the **FACTS** on the local market and how that affects your property whether you are selling or buying. You can be sure to get the right advice on price from us.

Phil Cumming
Licensed Estate Agent



0408 599 232

Gabrielle Beams
Sales Consultant



0412 430 976

Jackie Webb
Sales Consultant



0417 552 456

David Cross
Rural Sales Consultant



0419 328 958

Hayley Randall
Sales Co-ordinator



0409 080 901

Carolanne Simpson
Property Manager



0417 306 344

Guyett Real Estate P/L

11 Clifton Springs Road, Drysdale

Open 7 days a week

www.guyett.com.au drysdale@guyett.com.au

5251 2847

The SpringDale Messenger