

The SpringDale Messenger

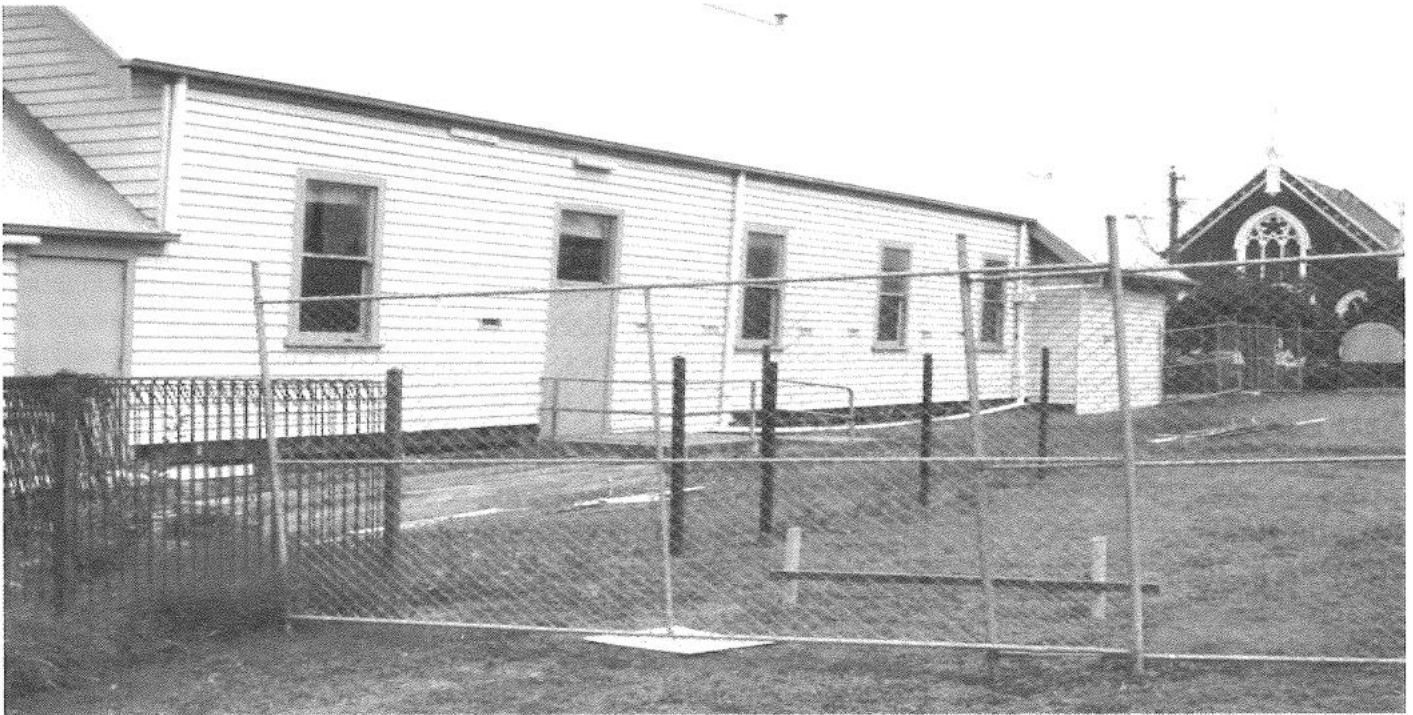
Your Free
Community
Newspaper

Compiled and published by the SpringDale Neighbourhood Centre Inc A002916V

Circulation 4,000

ABN 21 404 220 267

Vol 15 No. 1, January 2005



DARE TO DREAM.....

Our dream of an extended Centre and refurbished Hall is finally becoming a reality. During January we have seen the Security Fence go up, base boards removed and profiles have been set up.

The Centre will be fully operational during the course of the renovations and every effort will be made to ensure that all our User Groups and Courses can continue with minimal interruptions.

Many people and groups have been involved in this project from it's inception, through all the trials and tribulations and delays, and we would like to thank everyone for their contributions, especially the City of Greater Geelong for their perseverance.

The year 2005 promises to be a progressive and exciting one in our town with Bellarine Veterinary Practice opening their new premises, and we are all looking forward to the completion of the expanded Safeway Complex and the new offices and shops of Guyetts' Allpoints Real Estate.



**DRYSDALE
VILLAGE
HARDWARE**
(03) 5251 3267

YOUR HANDY
HARDWARE
STORE

THE ARCADE
HIGH STREET
DRYSDALE, 3222.

Westpac

- OPEN SATURDAY
- HOME LOAN CENTRE
- GOOD TERM DEPOSIT RATES

CONTACT: WAYNE, LISA,
BEV, PAM OR COLLEEN
0408 668 578 OR 5251 1624

**SHOP 9, SUPERMARKET
COMPLEX, DRYSDALE**

The SpringDale Messenger

The SpringDale Messenger is compiled by the SpringDale Neighbourhood Centre Inc. A0024916V, 14 Princess St. Drysdale. Postal: P.O. Box 80, Drysdale, 3222.

Editorial and Enquiries:

PH: 5253 1960. FAX: 5253 3050

To improve the administrative arrangements for the Messenger we are encouraging all contributors to provide their information on disk (Word) or email it to us - messenger@springdale.org.au For those who have difficulty providing your contributions on disk we are still happy to accept written copy or make our computers available for your use.

Next Publication -

Copy deadline:

14th February, 2005

Distribution:

4th March, 2005.

Views expressed in this newsletter are not necessarily the views of the Publisher, the SpringDale Neighbourhood Centre Inc.

Advertising:

To ensure publication in a specific issue, copy must be submitted prior to deadline.

This includes both new adverts and alterations to an existing advert. Layout and Design of this issue by Pagation Design Services, Geelong. For any queries about advertising, please contact Anthony Zavaglia at Pagation Design Services.

Ph: (03) 5223 2494

Fax: (03) 5221 8063

springdale@pagination.com.au

Drysdale Engineering

Ian McCallum

- Steel sales • Trailer sales
- General engineering
- Welding • Machinery repairs
- Trailer repairs • Balustrades

55 Murradoc Road, Drysdale, Vic. 3222

Ph: 5251 1023

Community Calendar

Springdale Community Calendar - a Springdale Neighbourhood Centre initiative to support the whole community.

This calendar will enable you to quickly look up what is happening over the next couple of months (maybe longer) in our area. There will be a calendar for the next 12 months put on our website - accessible to all groups to help when planning events. If you would like to place an event on our calendar on the website and also in the next couple of issues of the Springdale Messenger - then please email, write or ring the details of the event through to the Springdale Office.

2005

- | | | | |
|-------|--|--|---------------------------------|
| Feb | 7th | Senior Citizen 1/2 yearly meeting | |
| | 8th | CWA Sausage Sizzle lunch and meeting
Diabetes Expo - Parkes Hall, Portarlington | |
| | 9th | Chronic Obstructive Pulmonary support group meeting | |
| | 12th | Tsunami Appeal cricket match - Leopold | |
| | 13th | Drysdale Rotary Free Family Fun day | |
| | 14th | SpringDale Neighbourhood House tour | |
| | 16th | Clifton Springs/Drysdale Garden Club - 1st meeting
Public Meeting - Leisure needs study | |
| | 18th | Drive-In movie at Clifton Springs Primary School | |
| | 20th | Drysdale Market
Coastal Car Safari fun day | |
| | 24th | Bethany Art House film festival "Somersault" | |
| | 26th | SpringDale Welcome/morning tea
Pako Street Fest | |
| | 27th | Portarlington Market
Bellarine Agricultural Show | |
| | March | 1st | Business Clean Up Australia day |
| | | 3rd | Jigsaw Club official launch |
| 4th | | Schools Clean Up Australia day | |
| 6th | | Clean Up Australia day | |
| 13th | | Bellarine Agricultural Show | |
| 19th | | The Bunyip jives in 2005 Festival - Drysdale Primary School | |
| 20th | | Drysdale Market | |
| 21st | | Adrian Mannix Community Service Award Presentation Dinner | |
| 25th | GOOD FRIDAY | | |
| 26th | EASTER SUNDAY
Day light saving ends | | |
| April | 1st | School Term 1 ends | |
| | 18th | School Term 2 commences | |
| | 25th | ANZAC DAY | |

Bellarine Personnel & Secretarial Service

Letters of Application | Resume Preparation
Customer Service Training | Mystery Shopping
Appointment Setting | Data Base Update
Telemarketing

Contact Rosemary - 5255 5773



Drysdale Physiotherapy & Sports Injury Clinic

- Spinal ■ sports ■ Manipulative ■
- Arthritis ■ Workcover ■ TAC ■ Vet Affairs ■
- Hydrotherapy ■ Exercise Rehabilitation ■

Peter Terry MAPA, MPA
and associates

Ph. 5251 2958

27 - 29 High Street, PO Box 179, Drysdale 3222

A warm Message from SpringDale Neighbourhood Centre

From all the Committee of Management, volunteers and staff of SpringDale Neighbourhood Centre we'd like to wish you and your family a Happy New Year. Our thoughts also go out to the thousands of families affected by the Boxing Day Tsunami.

While we've been on holidays much has been happening at SpringDale Neighbourhood Centre :- the fencing is up to show the construction is about to start - that's exciting.

Before the holidays we were busy putting together Advertiser and Contributor information packages for the SpringDale Messenger. These have been well received, as was the Business and Services Directory that was the centre pages of the last issue. I hope you've taken the few minutes to put this in a safe place near your telephone directory - if you need an extra copy please contact us. The income from the Business and Services Directory helped us to be able to print an extra 3000 copies and to distribute it to the whole of Portarlington and St Leonards as well as the usual Clifton Springs and Drysdale.

We will keep the Business and Services Directory up to date and if your business details change please let us know or if you would like to be included please let us know. We hope to print it twice a year if there is enough interest - it could be included

in the May and December issues of the SpringDale Messenger.

I've had the opportunity to pull together the course list this for this term - I am very anxious about all the courses as I would love to do just about every one of them!! There are our usual yoga, music and movement and basic computer courses but we've also included advanced computer courses and other courses we've trialled in the past and some taster courses, and the list goes on.

We've been able to include courses to meet every request we've received and been able to schedule courses that most people put their hands up to run.

A couple of courses still need tutors - but I'm sure someone will read this and volunteer, or know some one that we could ask to HELP !!!

We've also scheduled some sessions, which will be backed up by extra Occasional Care sessions to hopefully be able to help carers to be able to attend. The cost for this occasional care is at a significantly reduced price to the course attendees.

We've also had a few new interest groups join our ranks or are about to start. Portarlington Toy Library is coming under our auspice, the Jigsaw Club from Ocean Grove

is relocating to a front room of our Hall, the Segular Music group which was operating at St Thomas' Hall will begin with us early in February and a Solo card playing group has just commenced meeting at SpringDale.

In the future I'd love us to have a chess club and a fly tyer's group, an X box gamers group and the list could go on. Maybe we could even screen movies once a month. All these activities need skilled people to run them - please feel free to volunteer.

We showed the Drysdale Rotary Club through the centre just before Christmas and if any other group would like a guided tour we'd love to organize it

Yours for now

Anne Brackley

Co-ordinator

SpringDale

Neighbourhood Centre

SpringDales Facilities

INTERNET COSTS

\$1.50 per half hour, 20 cents per printed page

PERSONAL USE OF COMPUTER

FREE, 20 cents per printed page

PHOTOCOPIES


A4 - 20 cents per copy

A3 - 60 cents per copy

FAX MACHINE

Local rate - 50 cents for the 1st page
10 cents per page sent after the 1st

STD rate - \$1 for the 1st page,
20 cents per page sent after the 1st



**MORTIMER
PETROLEUM**

**PETROL STATION &
CONVENIENCE STORE**
97 High Street Drysdale Phone 5251 2603
Petrol, Autogas Bait & Fishing Supplies

CAR WASH
Open 6.00am-10.00pm



The Drysdale...

COFFEE • LUNCH • DINNER

OPEN 7 DAYS
Lunch and dinner
Reservations: 5251 2301
Sports bar • TAB
• Kids Playground
• Alfresco beer garden

DRYSDALE HOTEL High Street, Drysdale.

Clean Up Australia Day with the Springdale Neighbourhood Centre

Sunday March 6th is Clean Up Australia Day. It has become the largest annual environmental campaign in Australia. Hundreds of thousands of volunteers come together throughout Australia in a bid to clean up local environments.

Springdale Neighbourhood Centre is going to play its part after the suggestion was made to clean up along the Edgewater Drive foreshore where I understand many people walk. This might lift us from being 'the best place in the world to live', to being 'the best and the cleanest'.

We have checked the tides and they are low early in the morning, so let us make it an early start, 8am-10am. Come along and do an hour, then onto your normal Sunday routines. Registration will be at the top of the steps, I will have balloons and signs to mark the spot. We will also need the help of a mussel farm boat to transport the rubbish to a collection site near the Clifton Springs boat ramp, if possible.

Other people might like to choose other spots, like the Drysdale Guides

who have organized a site for the last 11 years. There is room for more than one site. Other groups have adopted other areas, as the Drysdale Rotary Club has done. We need to keep the place clean 364 days a year, not just one.

So let us not make the mess in the first place. Small things, such as securing loads and keeping a bag for rubbish in the car so rubbish doesn't go out the window will make a difference.

Anne Brackley

Peninsula Christian Church

boonderabbi@dodo.com.au

New church

A new church has commenced Sunday services in Drysdale at the Senior Citizens' Centre. Services will be 10 am each Sunday with other meetings during the week in private homes in Drysdale and Clifton Springs. The Church to be known as Peninsula Christian Church is part of the Crosslink Christian Network, a fellowship of Christian Churches in Australia. For enquiries please contact Pastors David or Carla Evans on 52513440 or mobile 0417127877

David Evans

Public Meeting

CFA, Drysdale

Wednesday 16th February 2005

7.30pm

Cr Tom O'Connor and Paul Jamison (Manager Community Development COGG) will be attendance to discuss the Bellarine Peninsula Recreation and Leisure Needs Study and the Bellarine Strategic Plan.

Residents will have the opportunity to raise issues and gain information on the future direction of the Bellarine Peninsula.

All Welcome



15th Bellarine Agricultural Show Portarlington

Sunday 13th March 2005

Attention to all school students

You are invited to participate in our Free Competitions

Primary School Students

Best Decorated Bike

1st Prize \$50 Voucher, 2nd Prize \$30 Voucher,
3rd Prize \$20 Voucher

Sponsored by Hendry Cycles Ocean Grove

Secondary School Students

Best Dressed Scarecrow

To be auctioned for "Cottage by the Sea" Queenscliff

1st Prize \$50 Voucher, 2nd Prize \$30 Voucher,
3rd Prize \$20 Voucher

Redeemable at Griffiths book store Geelong

Sponsored by Committee & Members St Leonards
Garden Club

For further info phone Kath Cauldfield: 5259 1474

PORT MOWERS are now in DRYSDALE



NEW
Ride-ons
from
\$1999.00



NEW
Mowers
from
\$319.00

FREE pick-up and Delivery

Locally owned and operated by
Neal & Liz Whelan

Sales, Service, Parts and Repairs

9 Mortimer street,
Drysdale 3222 Ph: 5251 5003

FOOT HEALTH CARE FOR ALL AGES



Michael A. Nicol Sue Partridge

General Consultations
Diabetics and High Risk
Orthotic Therapy
Nail Surgery
Veterans' Affairs
TAC and Work Cover

DRYSDALE

5251 2958

27-29 High St. Drysdale

Rotary Club of Drysdale report

The club wishes everyone a safe and happy 2005.

February 2005 is the 100th anniversary of the founding of Rotary in Chicago in 1905 and is a cause for celebration among Rotarians world wide.

Locally, Drysdale Rotary is organising a Free Family Fun Day on Sunday 13th February at the Rotary Children's Park at the bay end of Point Richards Road, Portarlington.

Our Miniature Steam Trains will be offering FREE rides all day from 10.00 am to 4.00 pm. In addition there will be free pony rides, a giant slide, a Thomas the Tank Engine jumping castle, face painting and many interesting displays to entertain both children and adults. It is all free and it is a day put on as a community project to celebrate 100 years of Rotary service.

Prior to Christmas the club members donated items for three Family Hampers to help those less fortunate enjoy the festive season. These were distributed to three local families who were most appreciative of this effort.

The Tsunami disaster shocked all of us but it is in these situations that the world embracing Rotary International can spring into action and render prompt and useful assistance. Drysdale Rotary responded by immediately funding the supply of two large Aquaboxes which were delivered to Sri Lanka two days later. These Aquaboxes are water purification aids to turn unsafe water into drinking water and help eliminate the risks of disease.

Co-ordination of these efforts is made by our District Governor speaking directly to the District Governor in Colombo so the right aid is delivered

at the right time. In addition Drysdale Rotary donated to the Geelong Rotary Disaster Fund and these funds will be partly used to buy fishing nets etc which can help the villagers resume their normal life as soon as possible.

Anyone wishing to donate aid money via Rotary may send cheques to us at PO Box 123, Drysdale, 3222 and a tax deductible receipt will be forwarded.

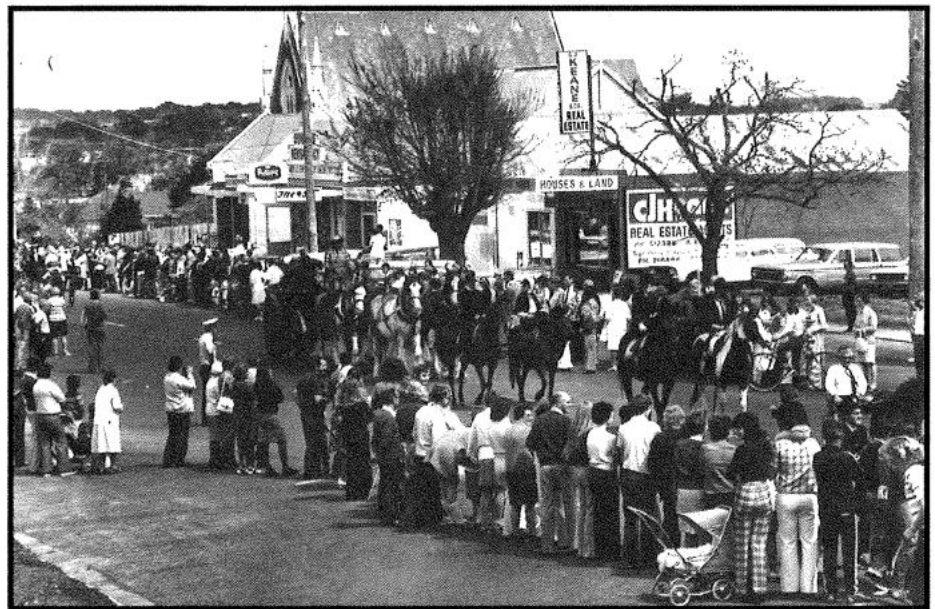
We are currently looking at the possibility of setting up collection points for clothing and pots and pans etc to be sent to those whose only possessions are the clothes they were wearing when the Tsunami struck. Such collection points will be advertised by roadside signs.

Rotary's aim is to make a difference in the world and we thank the public for their generous support of local and regional Rotary projects.

Drysdale in 1975

This photograph shows some of the celebrations for the Centenary of Drysdale Junior School in 1975. Are you there? Do you recognize anyone in the crowd or taking part in the procession? Would you like a copy of this photograph? If you would, please contact Pauline Cline on 5253 2717 for orders or enquiries. The A4 size in black & white is \$20 - all proceeds to St James Restoration Fund.

With thanks to Doug Williams from CJ Keane & Co for lending this photograph to St James' Church.



Bunyip Festival 2005

The Bunyip Jives in 2005 - hope to see you at the Bunyip Festival on Saturday 19th March at Drysdale Primary school 10am - 3pm. The full list of activities and festivities will be in the next issue of the SpringDale Messenger. Please pencil it on your calendar. Looking forward to seeing you there I'll be the one in green !!

Anne Cowden
Civil Celebrant

*Special Ceremonies
for Special People*

- ❖ Weddings - traditional or creative
- ❖ Name Givings
- ❖ Renewal of Vows

www.annecowden.com.au
Phone: 5251 3319

Dick's Do It All

Carpenter & Joiner
For all your carpentry

Renovations, Repairs, Pergolas, Decking
New Kitchens, Bathrooms

Ph: 5251 5400 Fax: 5251 5411
Mobile: 0407 125 389
7 Mortimer Street, Drysdale

KSS
Keith's
Sharpening
Service

*Precision Sharpened
Scissors and Knives*
Mobile: 0419 542 443

Drysdale Ladies Probus Club Inc A.002135YE

At our November meeting we handed over to Tony from 'Cottage By The Sea' all the beautiful goodies donated by our very generous ladies. 'The Cottage' was the charity that we sponsored for the second Christmas in a row. Tony spoke to us about what has been happening over there and how they came to get a new roof, as a result of one broken tile. The tiles were too fragile to walk on so a cherry picker (cost \$600) had to be called to replace one tile. The building is now heritage listed and the Trust came forward with \$50, 000 for an entirely new

roof. Catherine Freeman has been a wonderful patron during 2004.

Ann Mc Gill was our guest speaker at the November meeting and she spoke to us about 'cord blood' and 'Inner Wheel' of which she is a member. Cord Blood is the blood left behind in the placenta and umbilical cord, and these cord blood stem cells can be used in transplants for children with Leukaemia and other critical illnesses. Their aim is to have 20, 000 cord blood units available in Australia and this will provide a 5/6 or 6/6 match for 75% of the Australian population. Cord blood banks are

in the Children's Hospital Melbourne, Sydney's Children's Hospital, Mater Hospital Brisbane, and funds are being raised to establish a Cord Blood Bank in Perth.

Our Christmas luncheon at 'The Springs' was attended by 89 ladies who enjoyed a lovely lunch, a visit by Mary Christmas, and of course great company, and we are all looking forward to a healthy, happy New Year with great friends.

*Bye for now,
Glad Sharp*

Bellarine Jongleurs Inc.

Here is some information on a couple of up and coming productions:

ALICE

Bellarine Jongleurs will present Alice - based on Lewis Carroll's Alice In Wonderland from August 8 - 13th. The Director for this production is Stacey Carmichael and Musical Director is Lorraine Hall.

A pre-show information evening will be held at the Potato Shed on Thursday the 3rd of February from 6 - 7 p.m. Anyone interested in being involved is welcome to attend. Please bring a blank tape for recording of the audition song. For further

information contact Lorraine Hall on PH: 52 512893

"News Flash"

The Jesters - (the senior group for the Bellarine Jongleurs) has been dissolved and a new group has been formed in their stead. The Jesters wished to go out on their own and will do so under a as yet undecided new name.

BLUNT PRODUCTIONS

The Jongleurs is launching a new young adult group under their umbrella and it will be titled Blunt Productions. This group will be produc-

ing Black Rock by Nick Enright, under the Direction of Stacey Baldwin with Jacque Hall as Producer. This production will take place at the Potato Shed, Drysdale on the 19th, 20th and 21st of May at 7.30 p.m. and there will also be a matinee on the 21st at 2 p.m. Auditions for this production will be held at the Potato Shed Drysdale on Tuesday the 1st of February between 7 - 10 p.m. For more information PH: 0423 576700 or email: stacey_lea84@hotmail.com

Lorraine Hall

UNDER NEW MANAGEMENT

Drysdale Timber & Hardware

3600 x 600 x 16 White Edge Melamine \$35.00 per sheet

10% off all Shadecloth

15 Sheets assorted grit Sand Paper only \$1.95

36 Murradoc Road, Drysdale, 3222
Ph: 5251 2852 Fax: 5251 5455

NOW OPEN 7 DAYS
Open Sundays 9am-3pm

When you can't walk your dog
Spring Port Pet Services Can!



Daily walking Occasional walking
Vet transport, dog sitting
Holiday Care Packages, other pets too!
35 year of showing dogs
A lifetime of loving them !!
Phone Jenni 0416 049240 or 5253 2069

DRYSDALE
FINANCIAL SERVICES
Your Local Finance Option

- Residential & Commercial Finance
- First Home Buyers
- Purchase, Re-Finance, Construction
- Equity Access for Investment

Tel 5253 3152 AFG MIAA
Mob 0407 403 310

A Healthier, Active and more Involved Community

The Victorian Government is in the process of investing over \$21 million dollars in a state driven initiative aimed at creating a healthier, active and more involved community.

The investment will span across a wide range of initiatives aimed at increasing the levels of activity and improving the eating habits of all Victorians. It also aims to motivate increased participation and volunteering within the community.

'Go for your life' is the title given to this all inclusive communications campaign. The campaign is propelled by events and advertisements screened on television, radio, internet and in the print media.

By increasing the awareness of the need to remain healthy and active, the campaign is designed to tar-

get all sectors of the community, regardless of age or gender.

It is estimated that 25 per cent of Australian children are overweight. 'Go for your life' is an attempt to combat childhood and adult obesity and the increasing rate of diabetes amongst Australians.

The Government initiative also aims to bring the community together by motivating everyone to participate within their local community.

According to Margaret Thorp from the Geelong Volunteer Resource Centre, volunteers are very important to Geelong and the surrounding community. 'Volunteers keep the city ticking over. There are organizations like Meals on Wheels who have such an impact, especially in this case as people rely on their services', said Mrs Thorp.

The Government initiative to participate and volunteer in the local community is aimed at bringing Victorians together. 'Volunteering, especially in your neighbourhood is the best way to get to know the people in your neighbourhood. You get to meet neighbours and develop interests in the community', explained Mrs Thorp.

For further information on this Government initiative to lead a happier, healthier and more involved lifestyle, go to www.goforyourlife.vic.gov.au

For those who wish to get active this summer, the Springdale Neighbourhood Centre still has pedometers at \$39.95, with a big discount for members.

Rebecca Trembath

Clifton Springs Primary School Drive in.

Clifton Springs Primary School will be holding a Drive In Movie Night featuring "The Incredibles" on Friday February 18th, for just \$ 20-00 per vehicle. This is going to be a great family night out. Gates open at 6.00 p.m. at the south carpark on Jetty Road, with the movie starting at 8.30 p.m.. There will be separate parking allocated for vans and 4 WD's so everyone will get a great view. Good old fashioned Drive-In food will be on sale - hot dogs, drinks, popcorn, fairy floss and more! Tickets are available from the office of Clifton Springs Primary School.

Keryn Louise Dancing Academy - Drysdale

Principle teacher - Debbie Lee

*Classes for boys and girls
4 years to teenage classes
Jazz/Hip Hop/Funk
Tap dancing
Song and Dance*



Classes will be relocating to the Uniting Church - Drysdale as from 2005.

Thank you to St. Thomas's Church hall committee for accommodating us over the last 7 years.

Classes recommence February 2005 - New student enrolments are being accepted now.

Phone Debbie Lee - 5250 3244 or 0418 317 487

End of year performance held at Ford Theatre, GPAC.

(No sewing involved)

Jigsaw Club

THE JIGSAW CLUB, Bellarine born and bred, now comes to Springdale Neighbourhood Centre. Logical of course, to be centrally placed on the Peninsula for the many members from Leopold, Portarlington, Queenscliff and around to Ocean Grove.

The club now twelve years old, started with only twenty jigsaws and grew to an estimated two thousand, so shifting will be quite a task for us. Jigsaws have been a lifesaver for

many as well as a pleasure activity for all those who have found it a rewarding pastime for whatever reason.

The club recognises the encouragement and help given by Lisa Neville M.P., The Greater City of Geelong and especially our dear friend Anne Brackley.

By the time this Messenger is circulated we hopefully will be starting to stack the shelves in the front room of the Neighbourhood Centre hall in High Street Drysdale. The

official opening will take place on Thursday 3rd March at 11 a.m. by Lisa Neville M.P. when we will be fully established as a lending library for all who have an interest or maybe could develop an interest!

The next issue of The Messenger will reveal more about how it all began and what we hope will be the future

Neville and Joyce Burrows.

Friends of Ann Nichol House

Thank you to all who continue to support our fund raising. All monies raised goes to either the building fund or for the needs of the residents.

Results of the Christmas raffle:

- 1st Christmas stocking - L. Rule
- 2nd Crochet rug - M. Trehwella
- 3rd Teddy bear - K. OCallaghan

The Annual 10c auction held on Thursday 6th January at the Guides Hall in Portarlington was once again

a huge success as was the toy auction held in December.

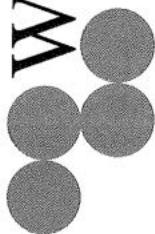
We congratulate the talented Peninsula Players on their 20th year of providing us with much enjoyment. Their support since the formation of the (former) North Bellarine Hostel for the Aged totals over \$17,000 — and we look forward to the “Opening Nights” in 2005.

The Bellarine Quilters have been busy, and our committee have re-

ceived another donation of hand crafted quilts, for the residents from Sims Lodge when they transfer to the new wing at Ann Nichol House at the end of January 05.

The Friends of Ann Nichol House meet on the 4th Thursday at 9:30am. For more information phone the President: Jean Cull 5259 2486 who will make any volunteers most welcome.

W
H
K
D
a
y
N
e
i
l
s
o
n



Bookkeeping & Support Services
Internal & External Audit
Tax Return Preparation
Specialised Consulting
General Accounting
Financial Planning
Finance & Lending

Ph: 5253 2862

www.dayneilson.com.au

GEELONG - OCEAN GROVE - MELBOURNE - DRYSDALE

SpringDale Community Building Fund

We need \$25,000 as announced in the last issue of the SpringDale Messenger. We now have almost \$1,000, thanks to some very community minded people and groups. Please help us to achieve this goal - a plaque will be placed in the renovation acknowledging your contribution towards our community facility.

Drysdale Senior Citizens club

DRYSDALE SENIOR CITIZENS CLUB would like to wish everyone a happy and healthy 2005.

Our Christmas dinner and entertainment on 13th December was a lovely day and enjoyed by everyone.

Our New Years Eve get together was a lot of fun, and plenty of lovely food to finish off the day.

To celebrate Australia we had a sausage sizzle on Monday 24th January.

Monday 7th February at 1.00pm will be our half yearly meeting followed by bingo and cards. Everybody is welcome for bingo.

Please note that this year our gentle exercises will now be held at 9.15

on Thursday mornings. Open to members and non-members.

Dates to keep in mind:

Senior Citizens Week - On March 14th we will be having the duo "Kilyn Tyme" perform, followed by afternoon tea.

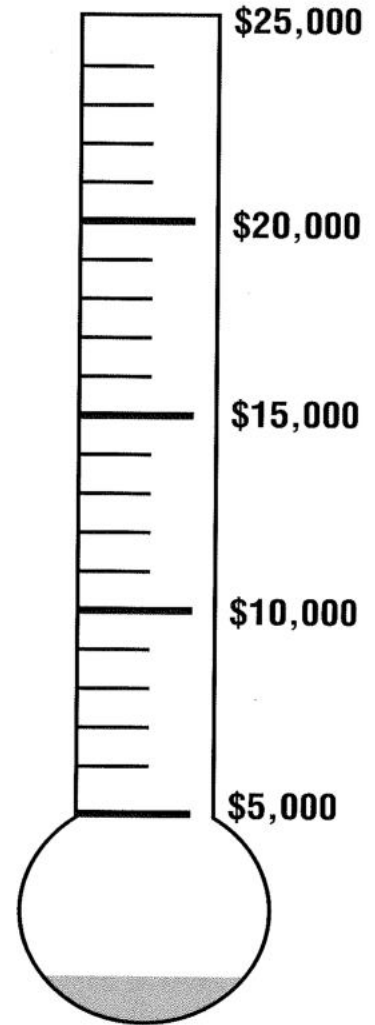
On April 4th we will be celebrating our 36th birthday.

We send our best wishes to all our sick members and hope to see them back soon.

President *Esther Lornie.*

Secretary *Mary Hose*

Phone no 52512983.



EXPLORE TRAVEL RELAX

GREAT HOLIDAYS. GREAT PRICES

HARVEY WORLD TRAVEL'S BUYING POWER HAS DONE IT AGAIN... JUST LOOK AT THESE DEALS.

<h3>ANTARCTICA</h3>  <p>Fabulous food, superb wine and some of the most breathtaking scenery on earth. Join Peregrine and De Bortoli Wines on an amazing voyage to Antarctica.</p> <p>Includes</p> <ul style="list-style-type: none"> • 4 nights Buenos Aires • 2 nights Ushuaia • 10 night Antarctic Explorer voyage • Return flights • Wine tasting <p>FROM \$10,490* EX SYDNEY</p> <p>Ask about the best connecting airfares to Sydney</p> 	<h3>IRELAND</h3> <h4>EARLYBIRD DISCOVERY</h4> <h2>\$1806*+</h2> <p>FROM PLUS TAXES OF \$219**</p> <p>Includes</p> <ul style="list-style-type: none"> • Return economy airfare to Dublin • 9 days Hertz car hire in Ireland <p>BONUS</p> <p>FREE upgrade from a Group B to a Group C vehicle.</p> <p>Holidays</p>	<h3>NEW ZEALAND</h3> <h4>18 DAY ESCORTED LUXURY TOUR</h4> <h2>\$1100*</h2> <p>SAVE PER COUPLE</p> <p>Highlights: Auckland, Wellington, Christchurch & Milford Sound</p> <p>Includes • 17 nights first class accommodation • 31 meals, entertainment & entrance fees</p> <ul style="list-style-type: none"> • The APT "Freedom of Choice Touring" experience • Free travel kit and bag <p>FROM \$4230* PER PERSON</p> 
---	--	--



Visit Harvey World Travel for your Travel Cash Passport. The safer, more convenient way to get cash overseas.

Call Now

5251 1125



HARVEY

world travel™

The Travel Professionals™

*Conditions and seasonal surcharges apply. Prices are per person twin share. Prices are correct at time of issue and subject to availability at time of booking. Australian taxes and airport related charges are included or listed and may vary depending on flight routings. Prices may fluctuate due to changes in charges, taxes and currency. Prices do not include taxes or charges collected directly at overseas airports. Please note a surcharge may be imposed on credit card transactions. A service fee may be charged. ANTARCTICA OFFER: Ex Sydney. Valid for select departure of 04 - 22 Dec 05. Conditions are as per the Peregrine Antarctica 05/06 brochure. Prices are subject to change & availability. Price is per person, based on main deck twin share cabin. Transfers in Argentina included. IRELAND OFFER: Ex Melbourne. Valid for sale to 31 Jan 05. Valid for travel 04 Oct - 11 Nov 05. Prices for other travel dates available upon application. Taxes, fees and charges correct as at 01 Dec 04, and may fluctuate. Car hire deposits, taxes and optional insurance apply. Full car hire conditions available on application. NEW ZEALAND OFFER: Airfares not included. Land Only. Advertised price already includes \$550 per person savings. Valid for select departures on APT's Royal Tourer from March to September 2005. Valid for new bookings only. All portage & tipping included, plus return airport transfers in New Zealand. MORE EUROPE OFFER: Call-hired airfares end 28 Jan 05. \$5125 per day based on 16 day Highlights of Spain. Cruise only. CRUISE OFFER: Cruise only. Airfares, hotels and transfers are not included. Valid for sale 29 Dec 04 - 26 Feb 05. Prices are based on complete 4 berth inside cabin, berthed at P&O Cruises discretion. Subject to limited availability. Not combinable with any other offer. *Cruise dollars available for bookings made 29 Dec 04 - 29 Jan 05. Max \$200 per 4 berth cabin. LONDON & EUROPE OFFER: Ex Melbourne. Price based on World Traveller Plus airfare Melbourne to London return. Book and pay by 04 Feb 05. Valid for travel 17 Jan - 24 Feb 05. Prices for other travel dates available upon application. Must be a member of Qantas Frequent Flyer program to qualify for points. Payment conditions and cancellation fees apply. Licence No: 32392 Mel

The Diversity of our Region-The Pako Festa

One of Victoria's chief Multicultural Festivals, The Pako Festa will celebrate its twenty-third consecutive year this February.

The Pako Festa will be held on the 26th of February in Pakington Street, Geelong West. Sponsored by Matchworks, The Pako Festa will showcase the ethnic and cultural diversity that exists in our region.

The one kilometer street festival celebrates the diverse nature of our region through traditional foods, dance, music, parades, crafts and exhibitions.

According to Luisa Lafornera, Multicultural Arts Officer for the Geelong Ethnic Communities Council (recently renamed) and Artistic Director for the Pako Festa, the fes-

tival is a chance to educate the community regarding the regions rich cultural and ethnic diversity.

'The theme for the festival is 'Tell me a story', it is inspired by cultural diversity. It allows cultural groups to educate the community about their culture. It's focusing on education and groups sharing their understanding with the community', said Ms Lafornera.

According to Ms Lafornera, the festival is distinctive in nature, 'The Pako Festa is a unique celebration. The multicultural festival doesn't focus on one culture, but many, in such a scale it's unique to the region'.

The GECC is organizing the event and has 31 affiliated groups participating in the festival. 'There

will be a large diversity of performances from dancers to the African Royal Drummers. It will be a great day', explained Ms Lafornera.

In a bid to gain greater understanding of the diverse nature of our community, it is our objective to devote a page in each issue of the Springdale Messenger to a cultural or ethnic event. We would welcome suggestions as to up-and-coming events that would be of interest to readers, a greater understanding in the community can only broaden and positively impact on the community.

Rebecca Trembath

Bellarine Calisthenic College

2005 ENROLMENTS

Our well established group is now entering its' 12th year!

Operating out of the Drysdale Uniting Church Hall, classes are held for pupils aged 3 years to 33++++ with an emphasis on

FUN, FITNESS and FRIENDSHIP

Calisthenics is a competitive team sport incorporating activities such as:

- Creative movement
- Exercise
- Singing
- Dance

Music
Performing
Acting
and MUCH, MUCH MORE!

Accredited Level 1 Coaches conduct all lessons in a safe and positive environment, according to the skill level and experience of individual members within the team.

Enrolment Night

Tuesday 1st February
5.00 - 7.30pm
Drysdale Uniting Church Hall, High Street, DRYSDALE
(enter - Car park at rear of Church)



Enquiries: Joanne
5255 4837 or
0408 329047
Email eaton@alphalink.com.au



scott&co

chartered accountants

- ▼ Tax Returns
- ▼ BAS Returns
- ▼ Small Business Advice
- ▼ Investment Advice

Belmont office - 5244 1622
1st FLOOR, 35-37 THOMSON ST, BELMONT

CNR. OF SPRINGS RD. & HIGH ST., DRYSDALE
www.scottco.com.au

Delivering PC Solutions
We come to you!

NEED COMPUTER HELP AT YOUR PLACE?



- IS YOUR COMPUTER SLUGGISH?
- DO YOU NEED INTERNET HELP?
- DO YOU NEED TO UPGRADE?
- DO YOU NEED A CUSTOM PC BUILT?
- DO YOU NEED HELP WITH E-MAILS?
- DO YOU NEED HELP WITH A VIRUS?
- DOES YOUR PC NEED A CHECK UP?

IF ANY OF THE ABOVE APPLIES TO YOU, STEVE AT **DP CS** CAN HELP. NO NEED TO UNPLUG ALL THE CORDS - WE COME TO YOU!

93 Beacon Pt Road, Clifton Springs
Ph: 5253 2558 Mob: 0405 523 606

YOUR LOCAL REPRESENTATIVES

Dear Reader,

The following is the first of my regular Springdale Messenger project and program updates and is aimed at informing and inviting opinion on the broad range of community issues.

I have arranged with Anne Brackley for office space to be made available at Springdale during the week - yet to finalise the days and times - but am readily available on either 0439 303 537 or toconnor@geelongcity.vic.gov.au
The issues and projects listed below will become key cornerstone features for the future of the Bellarine Peninsula and as such can only benefit from your interest and involvement.

Bellarine Peninsula Strategic Plan 2005/2016

The key aim of the Bellarine Peninsula Strategic Plan 2005 -2016 is to identify an integrated vision for the Bellarine Peninsula that incorporates the following

- a) Land-use planning decisions / already in Structure Plans (town boundaries, etc.)
- b) Social service plans to support communities and people living and visiting the Peninsula
- c) Township visions about healthy and sustainable communities

To ensure that this vision is developed by and with residents on and visitors to the Bellarine Peninsula, a Community Reference Group (CRG) is being established to guide the development of the project -

- * Township meetings were held in November and December to discuss the project.
- * Nominations have been received for representatives of the CRG
- * Membership of the CRG will be finalised at the end of January, 2005
- * The first meeting of the CRG will be held in early February, 2005
- * A working group comprising Council Officers and representatives of other organisations working on the Bellarine Pe-

nisula has also been established to guide the development of the project

* A City of Greater Geelong web page is currently under development for the project to ensure prompt and accurate distribution of information.

This study will link with the Bellarine Recreation Needs Study.

Stormwater Quality Management

We are about to actively protect the quality of stormwater being discharged from major developments. As part of the approved Stormwater Quality Management Plan, land use planning provides an opportunity to improve the quality of stormwater via incorporation of Water Sensitive Urban Design (WSUD) techniques.

In February/ March, we will be considering the introduction of new Water Sensitive Urban Design Engineering Guidelines, a new Stormwater Quality Management Policy, new specific planning permit conditions and new Local Laws specifically targeting litter and runoff from development and subdivision sites.

Local Laws Review

Following community consultations and presentation of verbal and written submissions, the revised final draft incorporating the resultant changes will be presented to Council at the next meeting.

The redrafting of the revised laws has taken into consideration both public comment and written submissions with regard to the social aspects of safety, security, health, recreation, environment, infrastructure, animal and road management, as well as the environmental implications of water and stormwater quality management, litter and waste management obligations, and the initial overstatement and misinformation regarding the range of fines and penalties.

Peninsula Public Transportation

Bellarine Peninsula bus stop - relocation from Malop St. due to the continuation of road works. The bus stop will be relocated to Lt Malop St, generally alongside the rear of the Officeworks car park.

At this time, the only stop being relocated is the Bellarine Peninsula service currently located outside La Porchetta in Malop St.

We will be installing bus shelters and signage over the next 2 weeks ready for the 1st February commencement.

Tsunami Appeal - Cricket Match

The Leopold Cricket Club & Leopold Lions Club has organised the following cricket match in aid of the Tsunami victims in Asia with all funds raised being donated to Care Australia.

Event: Bellarine XI v Geelong Invitation XI, Twenty x 20 cricket match

When: Under lights on Saturday, 12 Feb 2005. 7:30pm -10:30pm

At: Memorial Park, Melaluka Rd. Leopold

Funds will be raised through the following avenues:

Entry donation from spectators / major raffle / proceeds from the bar BBQ meals provided by Leopold Lions Club
A number of Geelong businesses will also be sponsoring the evening

This is only the first initial list and is to be followed by an additional range of programs and developments.

Regards,

Tom O'Connor

CoGG / Coryule Ward
Environment and Waste Minimisation Portfolio



Lynette's
User-Friendly
Computers

Personalised
Tuition & Training
Ph: 5259-3963
Serving the Bellarine Peninsula

Springdale café

We are now producing 98% of our products, pies, lasagne, quiches and much more, so if you are after a good valued meal or just a light snack, enjoy either with a wine, beer or just any one of our great range of drinks.

Springdale cafe will be trailing evening trade Friday & Saturday
Trading hour Monday - Thursday 8.00am - 6.00pm
Friday - Saturday 8.00am - late
Sunday 10.00am - 4.00pm

Naturopath

Lisa Taylor N.D. (A.N.T.A.)
Drysdale Community Health Centre
21 Palmerston street
Monday & Thursday
appointments ph: 5251 2291 AH: 5251 2544
Also available at Carmoora Clinic, 343 Moorabool St.
Wednesday & Friday: Ph 5223 2616
Specialising in women's and children's health using
Herbal, Homoeopathic and Soft Tissue Therapies.

Chronic Obstructive Pulmonary support group.

This is a group that began in July 2002 to assist people with any form of Chronic Respiratory Disease.

The group meets monthly on the 2nd Wed. of the month. There is a presentation re some topic of interest, followed by some gradual exercises and then time for a cup of tea and chat.

Feedback received from those who have participated during last year have requested a more structured exercise component and the opportunity to attend more often to exercise. So this year we will con-

tinue the monthly meetings with a speaker and there will be regular input from a Physiotherapist for the exercises. The room at the Drysdale centre will also be available on the 4th Wed of the month and when there is a 5th Wed that will also be available. These extra sessions will be supervised by the Primary Care Nurse.

So please come along for the the first session for 2005 and hear all about it or call:

Margaret Ahern/ Primary Care Nurse/ Portarlington Community

Health Centre/ 52592537. For more information.

First Meeting for 2005:

Wednesday February 9th

Time: 1.30pm until 3.30pm.

Venue: Drysdale Community Health Centre.

Cost: Gold coin donation.

No need to book just come along. Guest Speaker for February Meeting: Gay Vickers - Psychologist
Bellarine Community Health Service.

Topic: Anxiety/Panic Disorders.

Diabetes Education programs

If you have Diabetes or there is Diabetes in your family you need to be informed on how you can assist in the management.

Did you know that there is research to show definite better outcomes with less complications in later years if you are an active manager in your diabetes? It is not difficult, and it makes you feel more in control knowing how your lifestyle can have a positive effect on your long term state of health.

There is a lot of new information re diabetes management and if you

are newly diagnosed or you have had diabetes for many years you will benefit from updating your knowledge.

You are cordially invited to come to a DIABETES EXPO to start the new year off the correct way. You will have the opportunity to just talk to whichever health provider you would like information from/ Dietitian/ Diabetes Educator/ Podiatrist and community Nurse. There will also be the opportunity to see some new equipment.

WHEN: Tuesday 8th Feb. 2005

WHERE: Parkes Hall/ Portarlington.

TIME: From 4pm to 6pm

COST: gold coin donation at the door.

Come along and bring a friend. You do not need to have diabetes to benefit from this.

For more information please call Margaret Ahern/ Primary Care Nurse/ Bellarine Community Health Centre/ Portarlington Centre
Phone: 52592537

Walking Group.

Did you know that a group meets at the Community Health Centre each week on Tuesdays at 9.30 am to walk for approximately 1 hour then gather for a cup of coffee and a chat?

You can walk at your own pace and do not have to be an experienced walker.

This is an opportunity to meet new people if you are new to the area or to begin walking again. Pedometers are still available from Community Health Centre for those who would like to start the New Year with a healthy life style of being involved in the "Ten Thousand Step Program".

Enquiries: Margaret Ahern/ Primary Care Nurse/ Portarlington Health Centre
Phone: 52592537.

WALKING GROUP WILL RECOMMENCE FOR 2005 TUESDAY JANUARY 18TH.

**BELLARINE**
VETERINARY PRACTICE
DRYSDALE

**Happy New Year
to all our clients.
We are now at
108 High St. Drysdale.
Please phone
for appointment on
5253 1393**

Strength training for over 50's

Improve your fitness - Improve your strength
- Improve your well being

Conducted by experienced accredited exercise physiologist.

Open to all fitness levels.

Commencing Tuesday 8th February, 2005
(minimum of 5 people)

Time: 6:15pm - 7:30pm for 8 weeks - Cost: \$85

Inquiries phone Drysdale Physiotherapy and
Sports Injury Clinic: 5251 2958

Springdale Neighbourhood Centre

COURSE AND OPPORTUNITY GUIDE TERM 1 - 2005

Human
Services



Peoplefirst

Address: 14 Princess Street, Drysdale
Phone: 5253 1960
Fax: 5253 3050
Email: office@springdale.org.au
Opening Hours: Monday - Friday 9:30 am - 3:30 pm



Adult Education in
the Community

SpringDale is your local Community Neighbourhood Centre

ENROLMENT & PAYMENT INFORMATION

Enrolment

- To book into a class, call in person to SpringDale Neighbourhood Centre, 14 Princess Street, Drysdale or Phone 5253 1960.
- If you hold a current Concession or Health Care card you will receive a 5% discount on full course fees.
- Your enrolment is confirmed when payment is received.
- Classes must be paid for no later than one week prior to the commencement of class.

- Should a class be cancelled due to lack of enrollments or another reason, fees are refunded in full and enrollees notified.
- People wishing to withdraw from a course must do so prior to commencement of the course.
- Where fees have been paid a refund will be issued with an administrative fee of \$8.00 deducted.
- Where a person withdraws after commencement of a course, no refund will be issued.

Payment/Refunds

- We accept cash, cheque or credit card facilities are available for payment in person or via the mail in booking form.

Privacy

The Neighbourhood House respects your right to information privacy. Information collected and held on SpringDale participants, is kept in accordance with information privacy laws.

Health and Wellbeing

Boxercise

A single session for you to try your hand at Boxercise - just a taste to whet your appetite for next term!

Date: Friday 1st April
Time: 9am - 10am
Tutor: to be confirmed
Fee: \$10
Venue: Drysdale Community Hall

Looking After Yourself

A series of sessions to help you to look after you - looking at you holistically - Diet and Nutrition and the role of vitamin & mineral supplements as well as other dietary supplements, Natural, Organic Health and Beauty Products and Chemical Free Cleaning, Alternative Healing/Therapies, a taste of massage and some meditation.

Date: Monday 14th February -
Monday 7th March
Time: 1pm-3pm
Tutor: Sue Kerr and Peter Haines
Fee: \$50 (Occasional care is available during this session at a very subsidized rate)
Venue: Springdale Neighbourhood Centre

Tai Chi

Start your day with this gentle, relaxing form of exercise. Tai Chi helps to develop concentration, control and strength. Tai Chi is wonderful for everyone (including those who suffer from arthritis). Bring a friend, some comfortable clothes and shoes and enjoy the benefits of this age old form of exercise.

Tai Chi Continuing (For those with previous experience)

Date: Friday 11th February -
18th March
Time: 9:30 am - 10:30 am
(6 sessions)

Fee: \$65
Venue: Drysdale Community Hall,
High Street, Drysdale
Tutor: Faye Blainey

Tai Chi Beginners - An introduction to this gentle form of Chinese exercise - no previous experience necessary

Date: Friday 11th February -
18th March
Time: 10:30 am - 11:30 am (6 sessions)
Fee: \$65
Venue: Drysdale Community Hall,
High Street, Drysdale
Tutor: Faye Blainey

Monday Yoga

Exercise through breathing, stretching and relaxation.

Date: Monday 7th February -
21st March
Time: 9:15 - 10:45am (6 sessions)
Fee: \$65
Venue: Drysdale Community Hall,
High Street, Drysdale
Tutor: Glenda Breedveld
Materials: 1 Rubber mat

Tuesday Evening Yoga

For relaxation and balance of mind and body.

Date: Tuesdays 8th February -
29th March
Time: 7:30 pm - 9:00 pm
Fee: \$85 (8 sessions)
Venue: Drysdale Community Hall,
High Street, Drysdale
Tutor: Linda (Inner Cor)
Materials: 1 Rubber mat

Thursday Evening Yoga

For fitness, stress relief and clarity of mind.

Date: Thursday 27th January -
17th March
Time: 6:00 pm - 7:30 pm or
7.45pm - 9.15pm
Fee: \$85 (8 sessions)

Venue: Bellarine Peninsula Community
Health Centre, 21 Palmerston
Street, Drysdale
Tutor: Glenda Breedveld
Materials: 1 Rubber mat

First Aid - CPR Update

(Cardiopulmonary Resuscitation)
Accredited

Do not wait until it's too late. Learn CPR today. It is recommended that CPR updates are undertaken annually.

Date: Tuesday 15th February
Time: 12.15-3.15 pm (1 session)
or 7.00pm - 10pm

Fee: \$40
Venue: Springdale Occasional Care
Tutor: National First Aid

Date: Saturday 19th February
Time: 9:00 am - 12:00pm
(1 x 3 hour session)

Fee: \$40
Venue: Springdale Occasional Care
Tutor: National First Aid

First Aid Level 1

Accredited. Participants who complete the module successfully will be competent in managing life threatening emergencies at home, leisure or in the workplace.

Date: Tuesday 15th February -
1st March
Time: 12.15-3.15 pm (3 sessions) or
7.00pm - 10.00pm (3 sessions)

First Aid Level cont.

Fee: \$75
Venue: Springdale Occasional Care
Room

Tutor: National First Aid

Date: Saturday 19th February
(BYO Lunch)

Time: 9:00 am - 5:00 pm (1 session)

Fee: \$75

Venue: Springdale Occasional Care
Room

Tutor: National First Aid

First Aid - Level 2

Accredited

Level 2 covers all modules taught in Level 1 plus additional emergency treatment and management procedures. It is an Accredited Certificate, valid for 3 years (with CPR updates) and is required in many courses and work places.

Date: Tuesday 15th February - 22nd March

Time: 12.15-3.15 pm (6 sessions) or 7.00pm - 10.00pm

Fee: Full fee - \$145
Subsidized- Cost \$70

Venue: Springdale Occasional Care
Tutor: National First Aid

Date: Saturday 19th February and 26th February (BYO Lunch)

Time: 9:00 am - 5:00 pm (2 days)

Fee: Full fee - \$145
Subsidized- Cost \$70

Venue: Springdale Occasional Care
Tutor: National First Aid

Subsidized places are available for volunteers, those seeking employment or further education and training.

General Interest and Skills

Arm Chair Travel

Come with us to Ireland - its St Patrick's Day - wear some green and be prepared to try a few Irish delights! We might also look in at some stopovers on the way there and back and do some tastings there too - bring suggestions for our next trip in our armchairs.

Date: Thursday 17th March

Time: 1pm - 3pm

Tutor: A member of the staff of Harvey World Travel

Fee: \$5

Venue: Springdale Neighbourhood Centre

Celebrate Local Community Service

Adrian Mannix Award Dinner
Join with members of Rotary, Lions and Springdale Neighbourhood Centre to celebrate Community service and to see the presentation of Community Service achievement awards and the 2005 Adrian Mannix Community Service award.

Date: Monday 21st March

Time: 6.30pm for 7pm start

Dinner Tickets: \$20 (2 course meal)

Venue: Portarlington Golf Club - tickets must be purchased by Monday 14th March

Clean Up Australia Days

Come along and participate in a day of helping our environment - let's make our part of Australia not just the best but also the cleanest

Business Clean up DAY March - Tuesday 1st March - maybeareas near your work - maybe stop and do a section of the roadway before or after work ?Shopping centres etc

Schools Clean up DAY March - Friday 4th March

Clean up Australia Day Sunday 4th March - Clean up the Foreshore at Edgewater Drive near the steps

Time: 8am - 10am - earlier will be better as high tide is at 11.50am

Co-ordinator - Anne Brackley

Bring - sturdy gloves are essential and a bucket is sometimes handy

Venue: Edgewater Drive Clifton Springs - registration will be at the top of the steps

Conversational French

French - conversational - beginners For those with little or no French. Also suitable for Years 7-8 French for comprehension and pronunciation. Learn basic conversational skills for everyday situations.

Date: Saturday 5th February - Saturday 26th February

Time: 9am-10am

Tutor: Laurent Boulanger a qualified native French tutor

Fee: \$50

Venue: Springdale Neighbourhood Centre

French - conversational - intermediate

For those with basic French who want to improve their oral and listening skills. Also suitable for Years 9-10 French students. Participate in group conversation.

Date: Saturday 5th February - Saturday 26th February

Time: 10am-11am

Tutor: Laurent Boulanger a qualified native French tutor

Fee: \$50

Venue: Springdale Neighbourhood Centre

French - conversational - advanced

For those with a solid grounding in everyday French. Also suitable for Years 11-12 (VCE). In-depth discussions on cultural issues, family life and other topics as outlined in the VCE curriculum.

Date: Saturday 5th February - Saturday 26th February

Time: 11am - 12noon

Tutor: Laurent Boulanger a qualified native French tutor.

Fee: \$50

Venue: Springdale Neighbourhood Centre

Food Handling and Safety

(Apply basic food handling - Accredited)

Great for school Leavers, volunteers and those already working in food related areas. This accredited module will give knowledge and skills in correct and safe food handling storage and hygiene. Update your skills and improve your job prospects today.

Date: Monday 7th February

Time: 9-4.30pm

Fee: \$70(\$50+\$20) Subsidized

Venue: CFA High St Drysdale

Tutor: GATE (Glenn Sherry)

Food Safety Supervisor

Food businesses must have a Food Safety Supervisor. The Food Safety Supervisor and/or the owner of the business is legally held responsible for all food safety practices carried out by every staff member. The person nominated as Food Safety Supervisor can be: owner, manager, supervisor, head chef, independent consultant to the business.

Pre-requisite: Participants must have successfully completed Food Handling and Safety (course listed above)

Date: Monday 14th February

Time: 9-4.30pm

Fee: \$70 Subsidized

Venue: CFA High St Drysdale

Tutor: GATE (Glenn Sherry)

Gallipoli - a quick visit

Graeme will help you to visit Gallipoli from the safety of a training room - this session is presented in the lead up to ANZAC day.

Date: Tuesday 8th March

Time: 1.00pm - 3.00pm (1 session)

Fee: \$5

Venue: Springdale

Tutor: Graeme Thouliss

Date: Friday 18th March

Time: 7.00pm - 9.00pm (1 session)

Fee: \$5

Venue: Springdale

Tutor: Graeme Thouliss

Gardening - lets start small

Wayne's session about a potted garden was very well received last term - we'll be looking for more useful tips this time - definitely worth the small fee

Date: Thursday 10th February

Time: 10.30-12pm (1 session)

Fee: \$2

Venue: Springdale

Tutor: Wayne Long
(The Portarlington Nursery)

Life Planning

Where to from here

Let's look at where you are and where you're heading. Let's look at setting goals and gaining the skills and confidence to achieve them. For people looking for a change in the way you do things or the way life seems to treat you

Date: Friday 25th February - Friday 18th March

Time: 10- 12noon

Tutor: Character First

Fee: \$20

Venue: Springdale Neighbourhood Centre

Mobile Phones

How to do more than just turn it on

Bring your mobile phone along for a morning of discovery and understanding. Learn how to text messages and use facilities you didn't even know existed

Date: Wednesday 23rd March

Time: 10- 12noon

Tutor: to be finalised

Fee: \$5

Venue: Springdale Neighbourhood Centre

Personalities Explained

Gain insight into yourself and others by exploring personality theory. Use the theory of Myers Briggs Type Indicator (MBTI) to identify your own personality characteristics. Develop a greater understanding of how those around you make decisions, solve problems, organize their time, relate to others and process information.

Date: Tuesday 1st March, Tuesday 15th March

Time: 1pm - 3pm

Tutor: Dr. Joy Teague

Fee: \$50

Venue: Springdale Neighbourhood Centre

Preparing to refinance

or just had a spending spree

Are you looking to refinance your current home - looking to consolidate your debts - or just to try to get ahead - maybe this information session is for you.

Date: Tuesday 1st March

Time: 7pm -9pm

Tutor: Rod Malcolmson,
Drysdale Financial Services

Fee: \$5

Venue: Springdale Neighbourhood Centre

The Journey of Grief

In this informative session you will learn about the many ways grief affects our lives and be surprised at how you have coped with your feelings of grief throughout your life.

Date: Friday 11th February

Time: 10am - 12noon

Tutor: Pam Virgona from Kings

Funeral Services

Fee: \$5

Venue: Springdale Neighbourhood Centre

Thinking about buying a Digital Camera

Been thinking about buying a digital camera for a while but just not sure how many pixels are best etc etc - it all seems to be a foreign language. Well Barrie will try to demystify it all for you, so you can make the best decision for yourself.

Date: Thursday 24th February
Time: 7pm - 10pm
Tutor: Barrie Hesketh
CLANCIE Specialised Services
Fee: \$20
Venue: Springdale Neighbourhood Centre

Date: Thursday 3rd March
Time: 12.15pm - 3.15pm
Tutor: Barrie Hesketh
CLANCIE Specialised Services
Fee: \$20
Venue: Springdale Neighbourhood Centre

Welcome to our Community

Morning tea

If you are new to our community or if you feel you weren't welcomed well enough when you became a new resident - please come along to a morning tea and celebrate this experience with us - we'll hopefully be able to share a pleasant hour together - and get to know a couple more people and also a little more about the town.

Date: Saturday 26th February
Time: 10 - 12noon
Venue: Springdale Community Hall

What happens at a Neighbourhood House

What can I do there?

Anne Brackley loves our Neighbourhood Centre and she'd love to share it with you - please come along for a tour - find out about the activities that go on there and how you can join in or just use the facilities and maybe stay for a cuppa !!!

Date: Monday 14th February
Time: 11 - 12noon
Tutor: Anne Brackley
Fee: Free - I think that's a good price
Venue: Springdale Neighbourhood Centre

Art and Craft

Creative Art

Have a taste of a number of different types of Art. Come along and enjoy trialing many different art styles - folk art, water colours, pastels etc

Date: Monday 7th February,
Monday 21st February,
Monday 7th March,
Monday 21st March
Time: 10 - 12noon
Tutor: Jenny Lester-Smith
Fee: \$50 includes all materials
Venue: Springdale Neighbourhood Centre

Floral Art

Broaden your artistic horizon learn how to use the flowers and foliage out of your garden.

Date: Thursday 10th March
Time: 10am - 12 noon
Tutor: Lisa Golding
Fee: \$20
Venue: Springdale Neighbourhood Centre

Make friends with your sewing machine

Bring along your own sewing machine and learn how to manage it, including all those little gadgets. You will learn to do some mending and then go on to make a beautiful bag. (This will lead onto a couple of alternatives next term too!)

Date: Thursday 3rd March -
Thursday 24th March
Time: 10 - 12noon
Tutor: Ruth Trethewie
Fee: \$50
Venue: Springdale Neighbourhood Centre

Scrapbooking Workshop

Preserve photos from the past, enrich photos in the present and inspire hope for the future.

This class is for current scrapbookers / and beginners.

Date: WEDNESDAY 23rd February
Time: 7pm-10pm (1 session)
Tutor: Roz Murphy
Fee: \$12 per person
Venue: Springdale

Date: Monday 21st March
Time: 1pm-3pm (1 session)
Tutor: Roz Murphy
Fee: \$12 per person
Venue: Springdale

Date: WEDNESDAY 30th March
Time: 7pm-10pm (1 session)
Tutor: Roz Murphy
Fee: \$12 per person
Venue: Springdale

All computer classes are held at Springdale Neighbourhood Centre. Subsidized places are funded through ACFE Funding (Adult Community & Further Education) and are available for those seeking re-entry into the workplace, the unemployed and those over 55 years of age.

Introduction to Computers

Level A. Learn how to use a mouse and keyboard with greater confidence, open, close and navigate around the computer. A friendly supportive class and environment to get you started.

Date: Wednesday 9th February -
30th March
Time: 1 - 3.15 pm (8 sessions)
Fee: Full course fee: \$110
Subsidized: \$65 (\$51 + \$14 amenities)
Tutor: Lyn Brook

Introduction to Computers

Level B. Develop your skills that bit further and gain a bit more confidence

Date: Thursday 10th February -
31st March
Time: 1 - 3.15 pm (8 sessions)
Fee: Full course fee: \$110
Subsidized: \$65 (\$51 + \$14 amenities)
Tutor: Lyn Brook

Introduction to Computers

Plus. Develop your skills that bit further. Skills acquired include saving, creating and formatting a document, using the spell check, thesaurus and file management.

Date: Friday 4th February - 3rd April
Time: 1 - 3.15pm (8 sessions)
Fee: Full course fee: \$110
Subsidized: \$65 (\$51 + \$14 amenities)
Tutor: Lyn Brook

Advanced Computer Skills

This course comprises 3 independent modules. The first looks at security issues in general and concentrates on the application of several free programs that remove and prevent adware, spyware, viruses and spam. The second examines several processes that improve computer performance where this has degraded over time. The third module covers issues associated with sharing digital images - simple editing, emailing, saving images emailed to you and up loading to a web page. All of these skills will help you to help yourself while managing your own computer.

Date: Monday 21st February,
7th March, 21st March
Time: 7 pm - 10 pm (3 sessions)
Fee: Full course fee: \$60 (\$51 + \$9 amenities)
Tutor: Joy Teague
CLANCIE Specialised Services

OR

Date: Tuesday 22nd February,
8th March, 22nd March
Time: 9:30 am - 12:30 pm (3 sessions)
Fee: Full course fee: \$60 (\$51 + \$9 amenities)
Tutor: Joy Teague
CLANCIE Specialised Services

MYOB for Beginners

These sessions are designed for those just starting out. Learn how to set it up and get it going. This course will give you a basic foundation of how to use MYOB in your business.

Date: Wednesday 9th February -
1st March
Time: 4pm - 5.30 pm (4 sessions)
or 6pm - 7.30pm
Fee: Full course fee: \$65 (\$51 + \$14 amenities)
Tutor: Terry Thorp

Researching your Family Tree

This is a course I'd like to do !!! Any others out there like me ?? Anyone with the skills to run it ??? Occasional care is available at \$5 for the session if attending this course

Date: Monday 7th March
Time: 1pm - 3pm
Tutor: Wanted !!!
Fee: to be advised - probably \$20 ??
Venue: Springdale Neighbourhood Centre

Setting up a Website

Wondering how to set up your own website - Barrie Hesketh will walk you through some simple steps to get you started. Setting up a Web Page Development will be done using a template (cost of a template is about \$60). No prior web design is necessary

Date: Monday 14th February,
28th February
Occasional Care is available for these sessions at \$5 per session
Time: 12.15pm - 3.15pm (2 sessions)
Fee: Full course fee: \$60 (\$51 + \$9 amenities)
Tutor: Barrie Hesketh
CLANCIE Specialised Services

Or

Date: Tuesday 15th March,
Tuesday 15th March
Time: 7pm - 10 pm (2 sessions)
Fee: Full course fee: \$60 (\$51 + \$9 amenities)
Tutor: Barrie Hesketh
CLANCIE Specialised Services

Coastal Car Safari

A COMMUNITY FUN DAY ON SUNDAY 20TH FEBRUARY

You don't have to travel far to experience the beauty and diversity of Victoria's magnificent coastline. Woodlands, wetlands, bluffs, rocky reefs, intertidal shores and marine national parks can all be found on a journey around the coastline of the Bellarine Peninsula.

Join the coastal car safari on Sunday 20th February and drive yourself around the Bellarine Peninsula exploring its coastal niches. Experience a variety of coastal features, environments, scenery and issues. Complete short fun activities at some of the locations and discover the

answers to a coastal quiz. Finish off the day with a free barbecue, music and children's activities at Queenscliff.

Limited numbers can participate in this free event, organised by Swan Bay Integrated Catchment Management Committee, so book early to avoid disappointment.

First prize for the quiz in each of the Junior (under 13 year olds) and Open classes is a 'Marine Discovery Trip' on Port Phillip Bay for 5 people valued at \$125 through the Marine Discovery Centre, Queenscliff.

The event will run from 12.30 pm to 6 pm on Sunday 20th February.

The starting and ending point of the coastal safari is 'The Pavilion', Southern Princess Park, (off Hygeia Drive), Queenscliff.

Bookings are essential. Register your participation by Monday 14th February with Steve Smithyman 0417 231 853 or Sue Longmore 5258 1836.

This coastal and community fun day has received support from Barwon Coast, Swan Bay Integrated Catchment Management Project, Coast Action Coastcare Program, Natural Heritage Trust, Borough of Queenscliff, Queenscliff Meats and local environment groups.

From the Garden Gate

How has your garden survived the first weeks of Summer? You can actually cut down on the watering and the plants will still thrive. Once a week of thorough watering should be sufficient. Mulching of course, helps control weeds and keeps the moisture in. When native trees and shrubs begin to drop their bark, rake it up as mulch to use on garden beds.

Pot plants need watering every few days. If you are going away, arrange for someone else to care for them.

An early idea for Christmas next time! Buy a small fir tree in a pot, to decorate and use again next time. When it outgrows the pot, get a larger pot or plant it in the garden.

Take cuttings of fuchsias. Trim spent flowers on all plants.

Harvest ripe tomatoes, zucchinis, marrows, melons and corn. Harvest stone fruits.

PLANT: Herbs, lettuce, radish, silver beet, Ageratum, impatiens, marigolds, petunias, snapdragon, calendulas, stock, wallflower, verbena.

CliftonSprings/Drysdale Garden Club.

First meeting for 2005. Monday February 21st 7.30 pm in the Uniting Church Hall. Drysdale Speaker - Rita Oliver "Bugs and Beetles in the Garden"

Wendy Hebbard

enquiries. ph: 52505545

MAGGIE GOVE N.D.

**Bowen Therapist
& Naturopath**

Member of A.N.T.A.

**Drysdale: Clinic 03-5251 1188
Ah 03-5253 2230**

(Rear of Elegant Profile)

BONE MARROW RECYCLE SHOP

High St. Drysdale

**Donations of
good clothing
and brick-a-brac needed.**

All proceeds from our shop go to help those with Leukaemia

Your kinda loan for your kinda home.

At Bendigo Bank we understand that buying a home is a big step. That's why we offer a wide variety of home loans that provide a great rate whether fixed or variable plus extra benefits. We make sure you end up with the right loan for your home.

For more information please call into your nearest branch at 44 Newcombe Street, Portarlington, or phone 5259 3266.

Bellarine Peninsula
Community Bank Branch **Bendigo Bank**

Subject to terms and conditions. Fees and charges apply. All loans are subject to the bank's normal lending criteria. www.bendigobank.com.au Bendigo Bank Limited, Fountain Court, Bendigo, Vic.3550. ABN 11068049178 AFSL 237879 (S4754a) (15/09/03)



Drysdale Motors

**FOR ALL AUTOMOTIVE
TUNING AND SERVICING**

**Specialising in
LPG DYNO TUNING**

Have your LPG vehicle Tuned on a "rolling road". If your car runs on LPG And hasn't been dyno tuned Then it hasn't been tuned.

- Roadworthy Testing
- Fuel Injector Cleaning
- Air Conditioner Servicing
- LPG Conversions
- New Car Servicing

**44 Murradoc Rd, Drysdale, 3222.
PHONE: (03) 5253 1033.**

Character Focus for the Bellarine Peninsula

Generosity vs. Stinginess

Carefully managing my resources so I can freely give to those in need.

Food for Thought

In Latin, *generosus* means "of noble birth" then became associated with the qualities expected of that station. The English word *generous* refers to the magnanimity of those who used their nobility well.

gen•er•os•i•ty n 1: nobility of spirit
2: willingness to give or share

3: magnanimity 4: the quality or fact of being generous

1. How could debt be limited in order to increase capacity for generosity?
2. What kinds of debt should a family avoid?
3. How can you develop a heart for the hardships of others if you have never personally experienced the same difficulties?

4. If you could provide for any one need in your community, what need would you meet? How could you share your present skills & resources to provide for that need?

5. How can you be generous on the job or at home?

How resources are managed is both a training ground & a measuring stick for personal character. Excessive spending & careless investments are character issues at the core.

"So this is Christmas. What have you done?"

Christmas has just passed and we move into another year. Before we let the thought and feel of Christmas pass, I like to take a few moments to reflect.

The Bible says, "For God so loved the World that He gave His one and only Son." (John 3:16)

At the time that God sent His Son the world was far from perfect. The people that Jesus was born into were under the rule of a foreign oppressor. There was all sorts of trouble and strife. Jesus was born into a common family and not into royalty or other nobility. If we think about the comparison between today and then we would see that to effectively

communicate His message God would have done better to choose this time with all its technology.

It seems to me that God did not come to a perfect situation and He did not come to perfect people. In fact it is our imperfection that highlights our need for God. God doesn't come looking for perfect people. He comes looking for people who are willing to admit their imperfection and their need for Him.

Church isn't for perfect people and being a churchgoer certainly doesn't make people perfect. Church is a place for people who acknowledge their lack of perfection, lack of righteousness, and their

need for someone to help them in their life.

If you think about your life and what you have done, making mistakes doesn't exclude you from being able to come to church. In fact, it is our mistakes that show us our need for God and our need to be a part of a group of people willing to seek God's help and willing to help each other.

So this is Christmas - God sent His Son to save an imperfect world. What have you done? It doesn't matter what you have done, but what does matter is what you will do in response to what God has done. Will you accept His gift, Jesus Christ?

DON'T LET YOUR COMPUTER BEAT YOU

We can help you:

- Improve your productivity;
- Clean up and/or prevent scumware;
- Improve computer performance;
- Edit your digital photos.



Have a private lesson — your house or ours

Contact us for assistance with any computing concerns or queries you may have

Phone Joy or Barrie on 5251 2115
CLANCIE Specialised Services
www.CLANCIE.here.ws

ph
o
r
a
t
a
r
g
i
f
t

Bellarine
Photographics

Mitred Touch Picture Framing

Photo processing
Digital photos
Art supplies
Custom frames
Gifts

Shop 1/15, Hancock St Drysdale
(opposite the Post Office)
ph: 5251 3300

For all your Photographic and Framing needs.

Cosmetic and Restorative Dentistry

- Teeth Whitening
- Mercury Free Fillings
- Cosmetic Crown and Bridgework
- Dental Implants to replace missing teeth
- All general dental services

Reed Dental Centre

Dr John Reed
Dr John Chung
Dr Choong Chai
(ADA)

FOR BEAUTIFUL
AND
HEALTHY TEETH

New Patients
Welcome

27-29 High Street, Drysdale 3222

5251 1108

187 Moorabool Street, Geelong 3220 5229 9779

What's happened and what's happening at the CLIFTON SPRINGS GOLF CLUB

GOLFING MEMBERSHIP

At the December Annual General Meeting a resolution was passed to allow Pro Rata memberships on a 12 month sliding scale from October 1st each year. This offer is only applicable to new members joining the Club and if joining in February 2005 the cost of a full membership is only \$323.00. Application forms are available from the office and with the course in the best condition it has ever been, now is the right time to become a member.

GOLFING CALENDAR

The Club's golfing calendar commences the year with some early honour board events being contested. February sees the qualifying rounds of the prestigious McInerney Fisher being held for the men whilst the Ladies will be hosting their Golden Putter day on Monday March 7th.

Junior Pennant also commences in February with us hosting on Sunday 27th February. Current fixture books are now available at the Club.

GREEN FEE AND MEMBERSHIP PROMOTION

Play 3 rounds of golf for only \$20 per round and receive the 4th round free and if you decide to take up a golfing membership we will deduct 50% of the green fees paid (\$30) off the membership fees.

NEWS YEARS EVE

A packed house saw the new year in at the club and enjoyed the fantastic local band CHARLI whilst feasting on a 3 course meal. Note this date in your calendar as this night always books out early.

COURTESY BUS

The Club is currently running a courtesy bus during January on Friday and Saturday evenings and a decision will be made at the end of January if the service will continue through the month of February. If requiring the use of the bus telephone the club for a booking.

CELEBRITY GOLF PRO - AM

The Kevin Paisley Fashion Eyewear Celebrity Pro Am was held on Sunday January 9th and proved to be an outstanding success with the course in magnificent condition. The Club received enormous positive feedback from all who attended and has assisted in putting Clifton Springs Golf Club and the township back on the golfing calendar.

If you were in the clubhouse during the golf presentation you would have enjoyed the talents of Wilbur Wilde, John Blackman, Leon Weigard and Glenn James at their best.

My special thanks to all the volunteers who assisted prior to, on the day and afterwards in making the day such a success.

I also must thank our 2 major sponsors, Kevin Paisley Fashion Eyewear and Blood Toyota for supporting the event.

BABBA SHOW AT THE SPRINGS

The final show of Babba at Clifton Springs Golf Club is fully booked out as has been their previous shows but people may still phone the Club in case there are any late cancellations.

We are currently reviewing our major shows for the coming 12 months and are looking bring to the area lots of new shows never seen at the Club before.

LUNCH & DINNER

Due to cost and wage increases we have had to increase the meal deal coupon price to \$5.50 but we believe this still represents great value for your second meal and the coupons have recommenced and are applicable from Sunday to Thursday evenings. We still of the lunchtime blackboard special meals with prices commencing from \$6.50.

David Milne
Manager

BELLARINE FENCING Co

We do
Picket & Paling,
Fences & Gates.

Phone: Andrew & Gayle Baylis
on 5251 3090 or 0417 544 887

Salvation Army Family Stores

Mortimer St. Drysdale
Ph. 5251 2475
Plenty of Bargains
The Place to Shop

Come and see us We are here to Help You

DRYSDALE CARPET COURT

CARPET - VINYL
CERAMIC TILES
FLOATING WOOD
LAMINATE FLOORS

Proprietor: Neil Petrie
Phone: 5253 1855 Mobile: 0419 519 030
63 Murradoc Road, Drysdale.

Clifton Springs Golf Club
Play By The Bay

Great Food -- Great Views -- Great Prices

TRY OUR FABULOUS LUNCHES
PRICES COMMENCE FROM \$6.50
(Monday to Friday only)

SUPER FRIDAY NIGHTS

Pots for glasses prices
Raffles, Raffles, Raffles
Mega Members Draw
Free Live Entertainment
Fantastic Views
Dinner 6.00p.m. - 8.30p.m.

February
Live Entertainment
(7.00pm-10.00pm)

Friday 4th - Guy Hennequin
Friday 11th - Babba
Friday 18th - Utopia
Friday 25th - Graeme Lear



Sunday to Thursday Evening
\$5.50 Meal Deal
Buy one main meal off our regular menu and
receive another
of equal or less value for only \$5.50
on presentation of this coupon.
(not valid Public Holidays and Long Weekends)
VALID until February 28th 2005
Conditions apply

GREEN FEE PLAYERS
\$20 FOR 18 HOLES
LEGEND COUCH FAIRWAYS
Bookings 52531488

Golfing Memberships
now available
Join during **FEBRUARY**
and pay only
\$323.00
AND NO JOINING FEE
Phone -52513391-

CLIFTON SPRINGS PLAYGROUP INC.

Playgroup is open on
WEDNESDAYS
10.00 to 11.30am

TUESDAYS
AND FRIDAYS
9.30 to 11.00am
(except school holidays)

At the CLIFTON SPRINGS
COMMUNITY ROOMS
(by the open air swimming
pool at the Golf Club)

Playgroup is for children aged
from Birth to Kinder.

A warm welcome is extended
to you. Come on any day and
meet new friends

FOR MORE
INFORMATION PHONE
JULIE: 5251 2627
OR SHELLEY: 5253 1897

A Community Christmas success!

On Sunday December 19th, Drysdale Family Support hosted a special Christmas Dinner. This Dinner was for people who may have been struggling to really enjoy Christmas because of various circumstances.

The night was a wonderful success. The room was beautifully presented and each person was treated to first class service that was done to let them know that they are special and appreciated. Some were picked up in a limousine and all were treated like VIP's.

Drysdale Family Support would not have been able to conduct the night without the generous support and assistance of local community businesses and the significant support of the Bellarine Community Forum, a cooperation of service providers on the Peninsula. This was a community effort that showed genuine care and concern for those in our neighbourhood.

Drysdale Family Support would like to acknowledge the following businesses and encourage community support for them;

Bellarine Pre-Mix Concrete, Kerry Dowd, Drysdale and Penin-

sula Funeral Services, Mortimer Petroleum, Bayshore Real Estate, Drysdale Hotel, Safeway Supermarket, Wise Guys Hair Stylists, Drysdale Village Hardware, Drysdale Fresh Fish, Drysdale Smash Repairs, Concept Campers, Pinky's Pizza, Bakers Delight, Bella Fruit, Drysdale Village Pizza, Split Enz Hair Stylists, Drysdale Pharmacy, Drysdale Village Milk Bar, All Solutions Lighting, Chris Walsh Pharmacy, Drysdale Post Shop, Lynette's Florist, Video Eazy, and Café Confessions.

Drysdale Family Support would also like to acknowledge the assistance of local Churches, Church By the Bay in Portarlington, Ocean Grove Baptist Fellowship, Kardinia Christian Church and the Uniting Church in Drysdale.

As you can see this truly was a community coming together to help one another and Drysdale Family Support are grateful to be able to be involved in such a great night for very special people.

We wish everyone a prosperous New Year full of God's Blessing.

DRYSDALE CHRISTIAN FELLOWSHIP

"A Community Church"

276-290 Jetty Road, Drysdale.
Phone: 5253 2241

Everyone is welcome to join us for the
40 Days of Purpose Campaign
Beginning Sunday 30th January
At 10.00 a.m.

And continuing each week at
9.00 a.m. And 10.45 a.m.
Please contact our office for details.

Kids Church resumes on 6th February.



OPEN 6 DAYS
(Closed Tuesday)

- Dining
- Study
- Bedroom
- Entertainment

Huge collection of furniture and homewares,
cane-ware, nautical & unique giftware.

Floor stock or made to measure.

'Country atmosphere with old fashioned service'

16 Collins Street DRYSDALE (Next to Hotel)
Phone / Fax: (03) 5253 1516

DRYSDALE REMOVALS & STORAGE

Local, Country,
N.S.W. & S.A.

PH. (03) 5251 3674

NEEDLE SYRINGE PROGRAM

Are you using drugs?
If so, then protect yourself from HIV and
Hepatitis C.

Obtain clean fits from the Drysdale
Community Health Service
21 Palmerston Street, Drysdale.

A CONFIDENTIAL service.
No questions asked.

CONCEPT CAMPERS

Manufacturers and repairers of Annexes,
Awnings, Tonneaus, Tarps, Horse Rugs,
Boat Covers Custom Built Camper Trailers
Caravan and Boat Storage
Discount for senior citizens

Phone (03) 5253 2569
61-63 Murradoc Rd. Drysdale.



18-20 HIGH ST. DRYSDALE.
OPEN 7 DAYS A WEEK
11am - 4pm

All Public Holidays except: Good Friday, Anzac day,
Christmas day, Boxing day and New Years day.

New Members always Welcome
Ph: 5251 1605

Ladies Probus Club of Bellarine Inc. Registered No. A14696T



Happy and Healthy New Year to all who read this Messenger. I feel that I am contributing something to the community by writing of our Probus Club activities.

The style of this Messenger may change, but it is for the better I feel, and all groups who are part of our community will have their own spot in the paper and also with a photo if the accompanying article is of required size.

With the refurbishment of the Community Hall getting underway sometime soon, those who use it will find the amenities greatly improved. There is always so much activity going on at the "cottage" whatever one wants to do, there are classes for it, so together we keep everyone who wants to attend happy.

Our membership is 130, and as always a waiting list is kept for those who cannot be accepted until a vacancy occurs. Considering the club has been in being for 18 years, there are still some founding members still

attending. Our fees have increased, but have remained static for many years. We continue to meet on the 3rd Monday of the Month at the Springs Function Centre Golf Club at 10.am. The Venue has suited us well over the years, where we have adequate parking. Coffee/tea and biscuits are served to us, so we do not have need for volunteers from the members to bring refreshments, only a few required to help serve the coffee. After the meeting we can remain as a group and have lunch in the restaurant. It makes for a social

day for many of our members who are lonely and do not wish to return to an empty house after such a lively morning.

The December Meeting held at the Springs, was our usual Christmas Luncheon, it was well attended and members looked good in their Christmas outfits and dazzling ear rings and flashing Christmas hats. We were served luncheon in between the members concert items. We really enjoyed all the program of events, and got carried away singing the Christmas Carols. Iris Astill sang a couple of Christmas songs before leading us into the Carols. Two C.W.A. members and Katherine Evans did a reading together. The Square dancers did very well, and looked very happy performing for the members. Nan also did a skit with Val Lewis, Norma O'Donnell, and Norma Bushby. As usual it was very well done. The surprise of the day, was a visit from Santa. So many ladies had a kiss from him it made their day. We also had a Christmas Fairy who wore a lovely dress with bells adorning it and a wand, wings and tiara. What a pretty sight she was to greet us.

January speaker was Noel Gough, Norfolk Historian, who will spoke about the Snowy Mountains.

Trip to Werribee Plaza on Monday 28th February. Time and pick up place to be announced at next Meeting.

Yours in friendship.
Iris Liz Tolton.

The *Life* *line* Shop

*Good quality clothing & bric-a-brac.
Donations of clothing & bric-a-brac
always welcome.*

*"Village Walk"
Shops 9 & 10, 21
Clifton Springs Rd. Drysdale.
Ph: 5253 2168*



Quality Butcher

PETER HOMMELHOFF

HOMMY'S QUALITY MEATS

For something new and different

16 High Street, Drysdale 3222.
Phone: 5251 2270

Bethany Art House Film Festival

The annual BAFF (Bethany Art House Film Festival) had its first year in 1997. Started by the 'Friends of Bethany' under the Chair of Tibby Peterson, its purpose being to raise funds for Bethany Community Support.

Bethany Community Support is a not for profit organization providing outstanding educational, therapeutic and advocacy services to a community of over 200,000 people living in Geelong and surrounding districts. Each year more than 6,000 people are assisted, by one or more, of a range of professional family support services offered by the agency.

The concept of using an Art House Film Festival as a fund raising event for a local charity is unique, and it has developed into an integral part of promoting Bethany and its services within the community.

Over the last seven years we have established a loyal following of art house film enthusiasts, and with our new marketing/advertising for 2005, we expect our numbers to grow from approximately 400 to 600.

The Festival's aim has been to promote 'art house' film - generally of a less commercial variety. There has been an eclectic mix of genres,

with titles from around the world, and because of the interest in the Australian film industry, we do try to include and/or start each season with an Australian film.

Our subscribers request the names of Directors/Producers with all films shown, and it was with this in mind that we invited Tony Ayres (Walking On Water) to open our 2003 season, and Andrew Knight (Siam Sunset, Sea Change etc.), for this 2004 season.

Both guests were greeted warmly by the audience who very much appreciated the time these men took in coming to Geelong to open our festival. We are hoping to have a 'name' open our 2005 season.

Some of the titles in past years have been;

Dance Me To My Song
Dancer in the Dark
Erskineville Kings
Before Night Falls
Lillian's Story
Bread and Tulips
One Night The Moon
Colour of Paradise
Magdalene Sisters
Amelie

Purely Belter
Saving Grace
Eight Femmes
Morvern Callar
Indochine
Lost in La Mancha
Y Tu Mama Tambien
Swimming Pool
Lovely and Amazing
Capturing the Friedmans

The 2005 season has now been organized, opening with the film Somersault, on Thursday February 24th at 8pm. When we know who our guest speaker for opening night will be, we will let you know.

A seasons ticket is \$60.00 for the five films. Bookings through Bethany, on 52788122.

There is information about these films on the Bethany website, at www.bethany.org.au.

If you require further information, or the PDF program, please contact me on 03 52291086 or peterston@pipeline.com.au.

*Thank you in anticipation,
Tibby Peterson
Chair, BAFF.*

C.W.A. Drysdale branch meeting

Drysdale Branch of the C.W.A. meets the second Tuesday of the month in the community rooms at The Springs, Springs Street Clifton Springs at 1.00p.m.

To celebrate the opening of the 2005 year, a Sausage Sizzle Luncheon will be held at the meeting rooms on Tuesday 8th February starting at Noon.

New members are very welcome. Contact person is the President. Ph.5251 3702

DRYSDALE FAMILY SUPPORT

Phone: 5253 2099

- *Counselling Centre
- *Life Skills Seminars
- *Foodbank
- *Second Chance Clothing

Now open at 16 Pinnaroo Ave.



ALINGA

LANDSCAPE DESIGN

Plan your garden to make it part of your home!

- On site garden consultations
- Expert advice in plant selection
- Computer generated plans and images of your new garden!

Neil Muhlhan

Ph: 03 5253 1299 email: alingadesign@bigpond.com

The SpringDale Messenger

Large format
Messenger now available
at the SpringDale
Neighbourhood Centre.
Just ask at reception

Bellarine Peninsula Railway - Drysdale

Hi all, here is Jan/Feb News. Happy New Year !

What an excellent start to the year! The cool weather has brought many happy travellers sampling the delights of the B.P.R.

We are pleased to see record numbers of locals 'showing off' their railway to their out of town friends. Quite a few international visitors have called in, from places such as Alaska, Ireland, British Columbia, Montserrat & Iraq to name just a few. With the setbacks the BPR suffered early last year, this has lifted our spirits and given us renewed hope.

We had an information stall at Drysdale Village just prior to Christmas & thanks to everyone who stopped for a chat, purchased a souvenir or left a donation - much appreciated. Some may have noticed further improvements along the railway of late. These works include extending the platform at Suma Park, continuing works at the new Lakers Siding station, the stunning overhaul & repaint of our Tasmanian diesel rail car (in green & cream - nice!) & more reno's at Drysdale. Your donations at work!

A new initiative this year has been the 'Steam n spit' dinner trains. This involves an early evening train journey, a yummy spit roast with dessert & entertainment for young & old including the very cool local band 'Blue Wax'. Thanks to all who came and enjoyed.

The Bellarine Secondary College students, led by the illustrious Mr Craig Parker assisted us several times during 2004. They co ordinated the anniversary colouring comp. for the primary schools, designed and printed a great 'rail trail' brochure & to top it off , turned up with a brand new platform bench seat they had made for us. This very well built seat has pride of place at the main platform entrance. A huge thanks guys!

Our station shop/tourist info has lot's of new items on sale. Very cool enamel mugs, showbags, stubby holders, key rings & caps are in stock along with our usual lines of history books, postcards, historic maps & posters. At present we also have a range of brand new Turkish wall/floor/bed rugs. An unusual 'rail-

way shop' item but they were kindly donated to us as a fundraiser. These rugs are at below cost price so call in for a look! Dozens of designs on hand.

Our museum has had more interesting items added too, again well worth a look.

The station is normally open Tuesday - Friday , some Saturdays & of course Sundays from 9am-4pm. Look for the flying flags! Relax & enjoy a cuppa beside Lake Lorne. With the recent rain the Lake is buzzing with some wonderful birdlife.

Finally, we again thank local business for their support during 2004. Drysdale Village Hardware, Guyatt Real Estate, Drysdale Westpac, Port Mowers, Bellarine Historical Society & our 'eyes in the dark' -Nightowl Security Systems. And of course everyone who stocks our brochures. A prosperous 2005 to all.

Take Care

Paul & Kate

*Drysdale Historic Railway Station
24 hour train info call 5251 3725
visit www.bpr.org.au*

**'Waiting for the train' DRYSDALE
Victoria 2004
Photo Arthur Courtney**



BFL 2005: Hawks on the verge of a new era

Drysdale will be forced to re-shape its list after several star players have quit the club over the pre-season.

The Hawks are set to be without almost half its regular senior team next season with Aaron Eddy, Matt Foot, Brad Wombwell, Craig Taylor and Danny Coleman set to play for Forest in the Colac and District league.

Young gun Brent Taylor has moved to Queensland to play for Coolangatta, while veteran Darren Wilson has retired at 42 after playing more than 400 games for the club.

And there could be more to follow over the opening months of 2005.

Coach Brian Cordy says it comes as no surprise that several of his players have chosen to move on after being part of a frustrating era, where the club has struggled to maintain its consistency in finals and have not won a BFL premiership since 1985.

"I wasn't too shocked that it happened because they have been part of the core Drysdale group for a while now and it's perfectly normal in football that players go on to other clubs or other leagues," Cordy said.

Cordy said he will look to his promising under-18 players and target prospective footballers in the Bellarine area to replace the long-list of departures.

"I think we will look to develop the young footballers in the area. I think there is a lot of promise and talent in the area...it's not so much about replacing the experience - but if we see a player that could match our profile and needs, then we will probably have a look at them," he said.

The young Hawks have been placed on a fitness training regime to bulk up over the pre-season - and become a physically and mentally tougher team after being repeatedly knocked out of the September action.

The Hawks are yet to recruit any players to the club, however forward Adam Richardson could contemplate making an appearance on the field next season - despite retiring with a career-threatening hip injury at the end of 2004.

Cordy hinted there is a possibility Richardson could play a few matches in 2005 but believes the club's leading goalkicker could be restricted to a forward coaching role.

Ocean Grove will face their biggest challenge in more than a decade after a huge exodus of premiership players have quit the club over the pre-season.

The Grubbers will retain just seven players of the team which finished runners-up last season and coach Damian Clark faces the daunting task of re-shaping the team which has won four of the past five BFL flags.

The long list of departures include premiership players Mathew Payne (retired), Craig Fagan (retired) Kane Montgomery, Heath Grant, Paul Branchflower and Cam Spolding.

"It is huge. There's easily over a thousand games of experience in those guys and all I can say is it's going to be a really young Ocean Grove side next year," Clark said.

Renowned as local footy's most successful team after competing in every grand final since 1993, Clark believes success in football is short-lived no matter how good you are.

"You can't always be up there, we know our guys couldn't go on forever and every successful side will face this time whether it's now or later...but it's how we go about our recruiting which could be the stepping stone for the future," he said.

Queenscliff will have a driving force of coaching expertise in 2005 with former

AFL premiership coach David Parkin adding his voice to the coaching panel.

The former Carlton and Hawthorn premiership player and coach has been mentoring coach Steve Clark over the past year and will take on a more intensive role next season.

Parkin, who has a holiday house in Point Lonsdale, has been one of the game's most successful coaches in more than 100 years of football.

"He's been mentoring me for a while now and he's had a great influence and he will help with the players sometimes, he might give them a call every now and then and give them some tips and those sorts of things," Clark said.

The Coutas are also hopeful former Sydney and Collingwood player Mark Orchard will re-sign with the club after retiring midway through the 2004 season.

Clark believes the club will have up to six new players next season but only two players - Mark Hounslow (Southport) and Mark Richardson (Broadbeach) - have been confirmed so far.

The Coutas have also gained the services of a former St Kilda and Frankston player which has yet to be named.

"Orchard is still up in the air, it depends what he wants to do and if he still wants to play, but we're more than happy for him to play next season. We've added a bit of experience with two midfielders and we're hoping to get a key position player and ruckman over the next few weeks," he said.

By Brent Diamond

Frank Burge Cars

KEITH PURCELL

Phone: 5222 1606

Fax: 52218608

Mobile: 0418 554 011

172 Fyans Street, South Geelong 3220

**BELLARINE
AUTO SERVICES**

Quality Mechanical Repairs

Tuning - Servicing

LPG Conversion - EFI

Tyres - Batteries - RWC

Licensed Vehicle Testers

Mortimer St. Drysdale

Proprietor: J. Pamplin

Ph. 5253 1644

Uniting Care
**CONCERN
VILLAGE OP-SHOP**

Shop 4 Village Walk

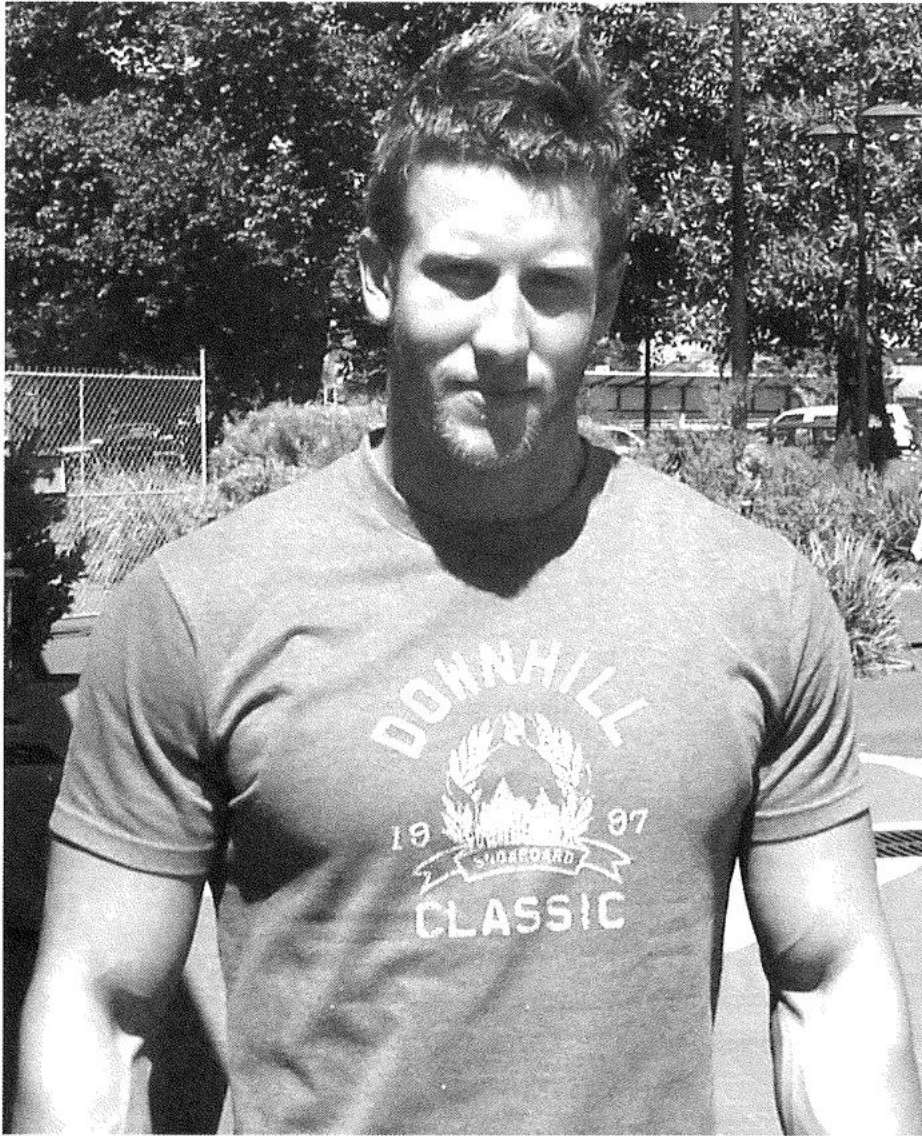
19 Springs Road

Drysdale

Phone: 5251 3640.

We value your custom.
Donations of clean goods always welcome.

It's more than a game



It may be what they call 'the off-season' - but fitness coaches around the country are doing their hardest yards to build their players up for another season. BRENT DIAMOND caught up with Drysdale resident and Geelong Football Club assistant fitness coach Chris Dennis who just happens to be the youngest fitness coach in the AFL.

Geelong assistant fitness coach Chris Dennis counts himself lucky to be involved with one of the rising teams in the competition.

At 23-years-of-age, Dennis is the youngest fitness coach in the AFL and could not be happier after being part of the club's rollercoaster ride since 2002.

"It's a fantastic place to be around, especially when the team is playing well and on the verge of success - you wouldn't trade places with anyone," Dennis said.

"It's a great job, there's 44 great guys and they're all my age so it's sort of like working with your mates and I can relate to what they're going through," he said.

With the Cats back in full swing after the Christmas break, Dennis, along with head fitness coach Loris Bertolacci, have been working tirelessly to keep the players in shape and ready for another promising season.

"It sounds silly but pre-season is our major focus. From November till about March is just full-on, very individualised programs for all the players with weight programs so it takes a lot of time and during the season it's usually just maintenance on the guys that are injured so it actually drops off for us in terms of an overall work-load," he said.

Dennis, a self-confessed fitness fanatic, believes the club's short-list of injuries combined with a list of maturing bodies helped the team climb up the ladder in 2004.

"We're just really specific with what we do. The problem with injuries is that you can do everything right and still get injuries, it certainly helps comes finals time if you don't have injuries. We know at the end of the day we have a 'touchwood' lower injury rate than other clubs but at the end of the day we just have to win games," he said.

Dennis came to the Cats with a wealth of expertise including a degree in sports science and marketing as well as a year's experience in personal training.

But it's an occupation that doesn't last forever. Eight fitness advisors were axed from AFL clubs last season because of teams under-performing.

"Because pretty much in football it's sort of like do-or-die. Unfortunately fitness development is a very volatile area. It's an area that if your club goes bad you could be out the door...it's not scary that much now because I have got the experience," he said.

Dennis says Cat fans should expect another big year from on-baller Cameron Ling who is once again in peak shape.

"Lingy just amazes me with everything he does because he is the size of a forward but yet he can outrun and out-muscle a lot of elite athletes," he said.

He also believes youngsters Henry Playfair and Cameron Thurley could play a massive part in improving the club's depth this season after impressing in the gym.

Despite working for his beloved Cats, Dennis hopes to one day venture off internationally and become a full-time head fitness coach with well-known soccer club AC Milan.

"That would be a dream of mine, no doubt about that because you would learn more and more about the fitness side of things in other sports around the world," he said.

By Brent Diamond

** Brent Diamond is currently on holidays in Bali and will return with his preview to the 2005 BFL season in his bumper finale with the Springdale Messenger - next month. Don't miss it!*

Allpoints

A new name in Geelong
Real Estate with over
260 years local experience
across 8 offices.



Allpoints

An exciting new concept in Real Estate.
Bringing together the knowledge and history of
4 leading local Real Estate companies under one name.

Allpoints.

With the strength of 8 offices spread throughout
Geelong, Ballarine Peninsula and the Surf Coast -

Allpoints brings you over 260 years local experience in
residential, rural and commercial Real Estate.
Whether your looking to buy or sell - look to Allpoints.
We'll change the way you look at your Real Estate needs.
Simply call your nearest office below or visit our web site.
www.allpointsre.com.au

Ocean Grove: **Allpoints@Guyett** 5255 1000
Leopold: **Allpoints@Guyett** 5250 1533
Geelong: **Allpoints@Carr** 5222 1488
Lara: **Allpoints@McManus** 5282 1294

Barwon Heads: **Allpoints@Guyett** 5254 3100
Drysdale: **Allpoints@Guyett** 5251 2847
Geelong North: **Allpoints@Geelong North** 5277 1999
Anglesea: **Allpoints@Lewtas** 5263 2214