

# The SpringDale Messenger

Your Free  
Community  
Newspaper


Compiled and published by the SpringDale Neighbourhood Centre Inc A002916V

Circulation 4,500

ABN 21 404 220 267

Vol 15 No. 8, October 2005

Christmas is coming to  
Drysdale



"DRYSDALE Community Christmas  
FESTIVAL" SUNDAY 27<sup>th</sup> NOV

10 AM ~ 3 PM

COMMUNITY HALL... High St.  
DRYSDALE!

SAUSAGE SIZZLE ~ ARTS & CRAFTS ~ LUCKY RAFFLE ~ FACE PAINTING  
GIFTS ~ CRAFTS DIP ~ FAIRY-FLOSS  
Jewellery ~ Many more HAND-CRAFTED items  
~ QUILT + DOLL DISPLAY ~



THRIFTY-LINK  
HARDWARE

YOUR HANDY  
HARDWARE  
STORE

**DRYSDALE  
VILLAGE  
HARDWARE**  
**(03) 5251 3267**

THE ARCADE  
HIGH STREET  
DRYSDALE, 3222.

## Westpac

- OPEN SATURDAY
- HOME LOAN CENTRE
- GOOD TERM DEPOSIT RATES

CONTACT: WAYNE, LISA,  
BEV, PAM OR MICHELLE  
5251 1624

**SHOP 9, SUPERMARKET  
COMPLEX, DRYSDALE**

# The SpringDale Messenger

The SpringDale Messenger is compiled by the SpringDale Neighbourhood Centre Inc. A0024916V, 14 Princess St. Drysdale. Postal: P.O. Box 80, Drysdale, 3222.

## Editorial and Enquiries:

PH: 5253 1960.

FAX: 5253 3050

To improve the administrative arrangements for the Messenger we are encouraging all contributors to provide their information on disk (Word) or email it to us – messenger@springdale.org.au For those who have difficulty providing your contributions on disk we are still happy to accept written copy or make our computers available for your use.

## Next Publication - Oct/Nov

Copy deadline:

14th November, 2005

Distribution:

2nd December, 2005.

Views expressed in this newsletter are not necessarily the views of the Publisher, the SpringDale Neighbourhood Centre Inc.

## Advertising:

To ensure publication in a specific issue, copy must be submitted prior to deadline.

This includes both new adverts and alterations to an existing advert.

Layout and Design of this issue by Pagation Design Services, Geelong. For any queries about advertising, please contact Anthony Zavaglia at Pagation Design Services.

Ph: (03) 5223 2494

Fax: (03) 5221 8063

springdale@pagination.com.au

## Community Calendar

**Springdale Community Calendar - a Springdale Neighbourhood Centre initiative to support the whole community.**

*This calendar will enable you to quickly look up what is happening over the next couple of months (maybe longer) in our area. There will be a calendar for the next 12 months put on our website - accessible to all groups to help when planning events. If you would like to place an event on our calendar on the website and also in the next couple of issues of the Springdale Messenger - then please email, write or ring the details of the event through to the Springdale Office.*

### 2005

- |            |       |  |
|------------|-------|--|
| <b>Oct</b> | 22nd  | Drysdale CFA annual garage sale from 9.00am - 1.00pm.<br>Drysdale Pre-school trivia night (fund raiser).   |
|            | 23rd  | Crimea War Veterans Grave commemoration service.<br>1:45 Oakden road.  |
|            | 24-30 | Weed Identification Display Drysdale Shopping Centre.  |
|            | 28-29 | Musical Nostalgia — Melodies that never leave us Senior Citizens Hall, Queenscliff.  |
|            | 30th  | Portarlinton Market.<br>Daylight savings begins.   |
| <b>Nov</b> | 1st   | Drysdale CFA annual Melbourne Cup luncheon. Clifton Springs Golf Club 10.30 start.   |
|            | 4-5   | Musical Nostalgia — Melodies that never leave us Senior Citizens Hall, Queenscliff.  |
|            | 5th   | Clifton Springs Golf Club annual dinner.<br>Free travel expo 10-3 Potato Shed.<br>DayVIEW Club - Giant garage sale 9am - 2pm at the rear of coastal Traders, 32 Geelong Road Portarlinton. Lots of fun and bargins galore. |
|            | 5-6   | Geelong Bonsai Expo 10-5 St Mary's Hall, Myers St Geelong.   |
|            | 12th  | Clifton Springs Golf Club - Eagles experience tribute show.<br>Clifton Springs Garden Club flower show.  |
|            | 16-19 | Peninsula Players The Great Divide Trilogy 8 pm<br>Drysdale Community Hall.  |
|            | 18-19 | Bellarine Jongleurs night.   |
|            | 20th  | Drysdale Market.<br>Christmas Fair - Drysdale Community Craft Club.<br>Community Hall.   |
|            | 25th  | DayVIEW Club meeting, Clifton Springs Golf Club.   |
|            | 25-27 | Queenscliff Music Festival.  |
|            | 26th  | St. James church annual garage sale and Christmas gift stall,<br>Collins Street Drysdale 8am start.  |
|            | 27th  | Portarlinton Market.   |
| <b>Dec</b> | 4th   | Clifton Springs Golf Club AGM 10 am.   |
|            | 6th   | Last bingo session at Senior Citizens.   |
|            | 13th  | Christmas dinner at Senior Citizens.   |
|            | 17th  | Portarlinton Market.   |
|            | 18th  | Drysdale Market.   |

Watch this space for details of SpringDale Neighbourhood Centre Official Opening.



## Drysdale Engineering

Ian McCallum

- Steel sales • Trailer sales
- General engineering
- Welding • Machinery repairs
- Trailer repairs • Balustrades

55 Murradoc Road, Drysdale, Vic. 3222

Ph: 5251 1023



The Drysdale...

COFFEE • LUNCH • DINNER

**OPEN 7 DAYS**

Lunch and dinner  
Reservations: 5251 2301

- Sports bar • TAB
- Kids Playground
- Alfresco beer garden

DRYSDALE HOTEL High Street, Drysdale.

## Drysdale Physiotherapy & Sports Injury Clinic

- Spinal ■ sports ■ Manipulative ■
- Arthritis ■ Workcover ■ TAC ■ Vet Affairs ■
- Hydrotherapy ■ Exercise Rehabilitation ■

Peter Terry MAPA, MPA  
and associates

Ph. 5251 2958

27 - 29 High Street, PO Box 179, Drysdale 3222

## A warm hello from everyone at SpringDale

It's hard to believe that we are already near the end of October. This year has been a very successful year for SpringDale and I believe for our community. The renovation of SpringDale, which started late January, is in its final stages and we look forward with anticipation to the formal opening (hopefully) in December.

We are already enjoying the parts of the renovation that have been completed and so are many members of our community. A number of people have wandered in for private tours, a couple of families have hired the new areas and the hall for family functions and we have been able to offer cookery classes. The volunteers in the office are enjoying the new, almost palatial environment, compared to the cosy office that is now being turned into our new Occasional Care area.

For those who have never found us, our hall fronts onto High Street Drysdale just across the road from the Uniting Church. Our new main entrance is on the Northern side of the building which faces the newly surfaced carpark. Although our signage isn't as good as it could be at the moment, you will hopefully receive a warm welcome and a happy smile as you enter, followed closely by a warm "Hello ... how may I help you today?". We hope that everyone leaves feeling at least a little more special and cared for than when they came.

Apparently not everyone knows what they can do at SpringDale or what SpringDale can potentially do for them or what we can achieve together. So here goes:

**Our Mission statement is:** "The SpringDale Neighbourhood Centre provides community strengthening services to improve the quality of life for the residents of the North Bellarine."

What does that mean we do? Our 5 main areas of interaction with the community are:

- The SpringDale Messenger – we collate, print and distribute 9 copies per year

- we welcome articles from the community – especially community groups and not-for-profit organizations. We welcome these groups to commit to a partnership arrangement with us, which includes 3 free ads per year (but there is a one off set up fee of \$20). We welcome commercial ventures to commit to a partnership arrangement with us, which includes advertising with us for a fee – which then supports the production and delivery of our "free" newsletter.

- Our courses (some of which are accredited) – we advertise and try to run about 40 courses per term – and the list is growing due to your requests and suggestions from tutors – this year we have introduced Floral Art, Advanced Digital Photos, Advanced Computer Skills and Belly Dancing due to requests. We also introduced Script Writing, Acting for the Camera, Meditation and Conversational French because of tutors within our community who wanted to share their skills. Both of these methods of increasing our course list should improve the quality of life for our residents – if they partake in the feast of learning laid out for them.

- Occasional Care – we provide a service for families, who may not have relatives nearby, who could look after children for small periods of time, while they have an appointment, attend a course, shop or look after themselves for a couple of hours etc. This is a very important service for families with children 0 – 6 years old. At the moment this is available every morning and Thursday has an extended session of 5 hours – we are thinking of offering the extended session on a Monday next year as well.

- SpringDale interest groups – we are very happy to have 10 active interest groups – they are SpringDale Singers, Bellarina Toy Library, SpringDale Friendly Writers, SpringDale Computer Users group, SpringDale Jigsaw Club, SpringDale Ma Jong Club, SpringDale Scrabble Club, SpringDale Chess Club,

SpringDale Instrumental Group and the SpringDale French Club. All of these groups were formed out of an interest or a community need. Please contact SpringDale if you would like to suggest a new group or join one of our existing ones.

- Community support – we are committed to partnerships with a few not-for-profit groups who hire our premises, we are committed to support groups by photocopying their newsletter at a commercial rate, we committed to supporting the community by providing fax, internet, computer, photocopier and laminator access for reasonable rates. We are committed to providing free tax information to those who qualify for this type of help. We are committed to hiring facilities and equipment to our community groups and members at reasonable rates. We are committed to providing information for new / established members of our community as requested or as the need is registered. We also provide space for people to just call in and enjoy a coffee/tea/cold water with us and a place to read the paper (if you bring it !!!)

I hope this gives you some idea of what we do – then of course there is the ad hoc stuff – hopefully we might be able to help you no matter what your question/suggestion is ... if I haven't listed anything that interests you then please call in so I can increase the list !!!

Looking forward to seeing you soon, or at least hearing from you.

*Anne Brackley* on behalf of everyone associated with SpringDale Neighbourhood Centre.

## SpringDale Facilities

### INTERNET COSTS

\$1.50 per half hour, 20 cents per printed page

### PERSONAL USE OF COMPUTER

FREE, 20 cents per printed page

### PHOTOCOPIES

A4 - 20 cents per copy

A3 - 60 cents per copy

### FAX MACHINE

Local rate - 50 cents for the 1st page  
10 cents per page sent after the 1st

STD rate - \$1 for the 1st page,  
20 cents per page sent after the 1st

## Need to go to court?

Come in for a free chat

# RISTEVSKI

LAWYERS

1 High St., Drysdale  
(old Post Office) Ph: 5251 3453

## Civil Celebrant

## Heather Spry

Grad. Dip. Civil Ceremonies (Monash)

Modern - Creative - Unique

5259 1383

Mobile: 0411 239 404

email: hspry@netconnect.com.au



## Music at Springdale

Music as a service and source of enjoyment for the community is growing within Springdale's programs.

Individual instrumental tuition for young people has been a most welcome development this year, and expressions of interest are still being sought for those interested in forming an instrumental music group. This is the chance for people to try out their possibly long neglected skills.

The long established and flourishing community choir, the Springdale Singers, goes forward in strength, and is able to accommodate anyone, from those who are so unsure that they come saying 'I don't know if I can sing' (and everyone can!), to choristers with wide experience and training.

The emphasis Singers placed upon enjoyment of music was displayed at the recent open day, when they sang through nineteen items the members had themselves chosen as favourites during the year, yet these varied from arrangements of simple folk songs to choruses from modern musicals, or works of major composers, all in full harmony.

While each week their skills and musical knowledge increase, the important factor is the pleasure they have in what they are doing each Tuesday. Because being a Springdale Singer does not mean having to commit oneself to regular attendance or to be available for weekend concert performance it fits well around other personal engagements and absences due to illness or even extended holidays.

Several members have taken the opportunity to select a piece of music and either lead the choir or accompany it on the piano. This has worked well for those willing to have a try, but most of the accompaniment has for several years been provided by a volunteer accompanist who is withdrawing from playing at the end of the year. We are now seeking someone who will play some or much of the piano parts; perhaps one who has accompanied before and misses this involvement with a choir, maybe a pianist who has played only for their own pleasure, who would venture further in applying their skills. We would welcome anyone interested

to come and see the choir at work, so that they could appreciate the level of music it is prepared to tackle. They would also see what a lovely group of people they are.

So, singers, those who are non-singers up to now, pianists, and any others who just want to sit in and listen (yes, we even have those) are most welcome to come on Tuesday afternoons to Springdale Neighbourhood House, in the community hall, to see if we can provide them with a couple of hours of musical pleasure, take away stress and give personal satisfaction.

SPRINGDALE SINGERS meet on Tuesday afternoons at 1.30 pm to 3.30 pm, except during school holidays. There is a \$2 attendance fee which includes a cup of tea/coffee and all music.

Further information:  
Springdale office or the Musical Director Tel. 5253 2347,  
E-mail [gtmedgar@datafast.net.au](mailto:gtmedgar@datafast.net.au)



**ARE YOU OVER THE AGE OF 50?**

**DO YOU NEED TO LOSE WEIGHT?**

**WOULD YOU LIKE TO ENHANCE YOUR LIFESTYLE?**

**ARE YOU MAKING USE OF THE GYM  
2-3 TIMES PER WEEK?**

Research shows that weight resistance training is helpful in maintaining and improving the health of the elderly in our society. Many people with Arthritis, Diabetes, Osteoporosis and Heart conditions, benefit by working out at the gym regularly.

**COME ALONG TO OUR INFORMATION SESSION**

**MONDAY September 26th 1:30PM**

**AT**

**U2 FITNESS CENTRE**

**33 MURRADOC ROAD, DRYSDALE**

Learn how you will benefit from a fitness program. We look forward to meeting you.  
Please book your place on : 52 531 795



# Bellarine Rail Trail - at Curlewis



When motorists pass it, or cyclist ride on it, or walkers just stride-out on the rail trail track at Curlewis they will all appreciate the marked difference in this rail trail section, with all the environment and facility improvements that have happened over the last 3 years - particularly those recent improvements adjacent to Curlewis Road.

When COGG first mooted the idea of a "Friends of the Bellarine Rail Trail" Group little did it realise that many interested individuals would bring a strong passion and commitment to improving the trail for the whole community, combined with an overall vision of what is required long term - that passion and commitment second to none.

One such person is Fred Cook of Leopold who has been in the Friends group since its inception in 2002. Fred is the group's Work Coordinator who plans the weeks activities centered on working bees and special projects. In his function Fred cooperates with the staff from COGG who supervise all rail trail activities ensuring that all plantings are in line with the recently released management plan.

One such area project that has been in development for 3 years is the Friends Park at Curlewis Road that includes an Avenue of Honour for the Ocean Grove RSL. This volunteer "joint venture" concept has meant that meaningful outcomes can be achieved for all trail users if separate community groups cooperate with one another.

Projects such as this are not all plain

sailing for volunteer group such as Friends as we all realise that material costs mount as the vision grows - thus placing pressure on fund raising activities, successfully achieved mainly through Application Grants to COGG and to the local private sector companies.

This pressure on raising funds to purchase plants, materials and tools can be lessened by some innovative thinking such as the Friends volunteers working at the Landcare Nursery at Drysdale, where each hour of volunteer labour gives a credit of 12 trees for the group to plant out along the trail. A specially designed "stake remover" is another way of reusing stake and plastic guards from old plantations, into new plantation settings.

The biggest asset for any volunteer group of course is its individuals and those skills and commitment that they bring to a project. Fred Cook has been the instigator at Friends Park supported by a lot of other active members and COGG employees. All the trees, tree guards, stakes and seating etc. have been purchased by the Friends group and planted by Fred and his crew over the years.

A new Picnic Table / combination seating ( one of 4 to be installed along the trail by the Friends Group) was installed this morning within the scenic park, allowing visitors to take a bite to eat among very pleasant surrounds. The tables were constructed by Apprentice students from the Gordon TAFE Campus at East Geelong. The finished product is a testament to their skills.

Whilst some hand mowing is still

necessary, a Service Club volunteer periodically uses a Ride-On mower to keep the RSL Avenue of Honour in tip-top condition. Mowing will gradually be reduced as new plantings of native grasses and indigenous trees take hold among the mulched garden beds.

Admirers of this Park can be assured that the Friends group are advocating, in cooperation with COGG management and other trail groups, to develop a Vision for the Bellarine Rail Trail where the high standard set at Curlewis can be added to, to create an interesting and vibrant natural trail habitat from South Geelong to Queenscliff, one that all future trail users will enjoy!

The Friends also recognise that their efforts are supported by funding received from the City of Greater Geelong, Alcoa, the Dep't of Family and Community Services and Tattersalls (Melbourne) P/L

### **Trevor Jennings**

*Secretary, Friends of The Bellarine Rail Trail*

*Email: tjennings@bigpond.com*

**Blue Dragonfly  
Glass** 

*For all your custom made  
Leadlight and Mosaics*

*by appointment only  
Contact Jenny on  
Ph: 5251 1017 - Drysdale*

*For your free quotes - All enquiries welcome*

EXPLORE

TRAVEL

RELAX

# FREE TRAVEL EXPO

- Lots of fantastic offers and info • 1-Day only!
- 2006 Earlybird savings! • Local venue

**Saturday, 5th November**  
**from 10am to 3pm**

at **the Potato Shed**, near Bellarine Secondary College  
 Peninsula Drive, Drysdale

**EXHIBITORS INCLUDE:** • AAT Kings • Adventure World • ANZCRO • APT Australian Pacific Touring  
 • Bill Peach Journeys • Carnival Cruises (P&O Cruises, Princess Cruises) • Concorde International  
 Travel • Contiki Holidays • Coral Seas • Discover Asia • Explore Holidays • Globus & Cosmos • Grand  
 Pacific Tours • Harvey World Travel Insurance • Helen Wong's Tours • Insight Vacations • Peregrine  
 Adventures • Rail Plus • Scenic Tours • Sundowners Travel • Sunlover Holidays • Talpacific Holidays  
 • Tasmania's Temptations • Tempo Holidays • Trafalgar Tours • Travel Indochina •

## PLUS: 6 FREE Half Hour Info Sessions

Please register in advance (limited seating)  
 to reserve your free seat!

START TIME	EXHIBITOR	SESSION INFO	START TIME	EXHIBITOR	SESSION INFO
10:30am	Scenic Tours	South America and Egypt	12:45pm	Tempo Holidays	Greece and Turkey
11:15am	Trafalgar Tours	Europe Coach Touring	1:30pm	Sundowners Travel	Trans Siberian Railway
12 noon	Insight Vacations	Europe Coach Touring	2:15pm	Adventure World	Africa

FOR MORE INFORMATION, CONTACT US TODAY:

### Drysdale • Phone (03) 5251 1125

Shop 2A, 6 High Street, Drysdale 3222  
 Email: drysdale@harveyworld.com.au

### Ocean Grove • Phone (03) 5256 1888

Shop 13 12/20 Kingston Downs Drive, Ocean Grove 3226  
 Email: oceangrove@harveyworld.com.au



**HARVEY**  
 world travel

*The Travel Professionals*



# From the Garden Gate

This is the time of year when gardeners get their reward - for hard work and for patience.

Don't forget to look around at other gardens as well and maybe get an inspiration or two.

there will be some Fetes and Garden Shows to attend as well.

Geelong Show . Celebrating 150 years. October 15,16,17 Last year there were some very spectacular flower arrangements on show in the flower section.

Geelong Bonsai Expo. Saturday November 5th in St. Marys' Hall Myers St. Geelong 10.a.m. - 5p.m.

Clifton Springs/Drysdale Garden Club Garden and Flower Show. Saturday November 12th 11am-4pm. Uniting Church Hall. Drysdale . Exhibits welcome .P.O.box Drysdale. Enquiries Robyn 52351009

## What to do in the garden now

- Service the watering systems,check for leaks and missing drippers and clean the line-filter at the tap. Also clean the spray heads that may be blocked with insects ,dirt or ant's nests.
- Use fallen leaves swept from paths as an instant mulch for the garden.
- Fertilize azaleas, camellias and other spring-blooming shrubs, as they finish flowering.
- Train climbing plants by tying up wayward branches.
- Take daisy cuttings now.
- Divide and repot orchids.
- Repot indoor plants into slightly larger pots with some fresh potting mix.

## Planting

A good time to plant all shrubs,

trees and potted colour. Plant summer flowering bulbs and water-lilies.

**Sow seeds of:** chrysanthemum, impatiens, gazania, nasturtium, snapdragon, sunflower, zinnia.

**Vegetables:** greens, cabbage, carrot, chilli, cucumber, eggplant, lettuce, sweet corn, tomato, zucchini.

## Meetings

Clifton Springs/Drysdale Garden Club meets. Monday October 17th 7.30 pm in Uniting Church Hall. Drysdale Flower Show. Saturday November 12th. Meeting - Monday November 21st. ALL WELCOME .

## Enquires

Wendy 52505545 or Robyn 5253 1009

# Clifton Springs Primary School

After nearly two years as Principal of Clifton Springs Primary School I am leaving to take up the position of Principal at Lara PS. Clifton Springs is a fantastic school. The students are a delight to work with and I have had lots of fun visiting their classrooms and talking to them about their work. Their behaviour and attitude is excellent and is a credit to their families and community. The teachers and other staff are very dedicated and professional and have supported me in the many curriculum initiatives we have introduced. I will miss working with such a professional group of people. The parents and the wider school community have been great to work with and very positive. I will miss Clifton Springs but take very fond

memories of the school with me.

The Acting Principal is Ms Debra Herbertson. On behalf of the school and wider community we welcome Debra to Clifton Springs Primary School and the Clifton Springs /Drysdale community.

*Anne Hollander*

Early in Term 4 we have our Grades 5 & 6 students attending Camp Wilkin in Anglesea. This camp offers well-presented accommodation and excellent facilities and activities in a bushland setting. On-site activities include trampolines, low rope course, volleyball, team challenges, high rope course, flying fox, basketball, tennis and orienteering. In addition, we will have

the services of a qualified instructor to lead the activities, and a bus attached to the camp. The camp will provide students with opportunities to build confidence and self-esteem, learn about the environment and to participate in activities that develop initiative and team work. The students are really looking forward to their couple of days away and all the adventures before them.

## CONCEPT CAMPERS

Manufacturers and repairers of Annexes, Awnings, Tonneaus, Tarps, Horse Rugs, Boat Covers Custom Built Camper Trailers  
Caravan and Boat Storage  
Discount for senior citizens

Phone (03) 5253 2569  
61-63 Murradoc Rd. Drysdale.

## BONE MARROW RECYCLE SHOP

High St. Drysdale

Donations of good clothing and brick-a-brac needed.

All proceeds from our shop go to help those with Leukaemia



## GEELONGS NEWEST RADIOLOGY PRACTICE

is now open in Drysdale

(in the old veterinary practice)  
11am TILL 5pm Mon, Tues, Thurs, Fri.

Shop 1 - 7 PALMERTSON ST

- Xray

78 GHERINGHAP ST

- CT
- CT angiography
- Ultrasound
- Doppler Ultrasound
- Xray
- Dental
- Dexa

Geelong	Drysdale
78 Gheringhap st	7 Palmerston st
5223 7600	5251 4000



# YOUR LOCAL REPRESENTATIVES

## Community Fitness Precinct at Drysdale Primary School

I was delighted to join with Drysdale Primary School Principal, Clare Wilson, and Councillor Tom O'Connor to announce a grant of \$105,000 for a community fitness precinct at the School.

The Government, through its Community Facilities Fund, is providing \$47,500 in partnership with the City of Greater Geelong, with a matching grant of \$47,500, and the School who are contributing \$10,000 to this exciting project.

As I'm sure you know, Drysdale has never had enough ovals which has been a major problem for local sporting groups, particularly for junior clubs, so it's great that the existing oval at the Primary School will be upgraded and modernised.

The Fitness Precinct will include a number of 'exercise stations' sited around the boundary of the ovals, establishment of lighting in the area for night time use, installation of an irrigation system and resurfacing of the oval to ensure the safety of all users.

Congratulations to students who ran a very successful Olympics Day fundraiser in 2004 and raised money which will be used to fund the cost of installation of some exercise stations.

The Fitness Precinct will provide both the school and the broader community with a safe, modern facility for a whole range of sports and activities, and will strengthen the already well established links between the school and the community.

Congratulations again to all the students, staff and parents who were involved in the development of this terrific project.

## Bellarine Secondary College

Official Opening of the Ocean Grove Campus

It was great to join Minister Lynne Kosky at the official opening of the Ocean Grove campus of Bellarine Secondary College.

This exciting, \$5m project provides students and staff with state of the art facilities, a very different environment to the portables they have been used to for so long.

There was a time when the school was threatened with closure, but it is

now very definitely a permanent facility that will greatly benefit the school community, as well as the broader community with access to sporting and activity areas of the campus.

Congratulations and best wishes to the Principal, Colin Sing, his staff and students who maintained the school's good work throughout the construction period and now can enjoy their new and stimulating surroundings.

## Task Force to Work with Small Businesses

You may have seen the announcement by the Minister for Small Business, Andre Haermeyer, of the formation of the Ministerial Task Force on Small Business. I am pleased to have been appointed to the Task Force, with an additional role focussing on Women in Business.

The Task Force will provide greater support to the small business sector, as well as augment the existing advisory bodies, the Small Business Advisory Council and the Ethnic Enterprise Advisory Council.

One of the first projects for the Task Force will be working with the Minister to develop the Government's Small Business Statement. There will then be an ongoing liaison role with small business operators and representatives, tracking the needs of small businesses and the challenges they are facing. This will ensure that the Minister is well informed and that the Government is able to develop responsive, appropriate policies.

The needs and issues concerning

small businesses in Bellarine have always been important to me so I am particularly pleased that this new role will mean even greater input to policy development at a Ministerial level. I look forward to continuing to work closely with our local Business Associations and small business people across the Bellarine Peninsula.

## Consumer Affairs Mobile Service

I am pleased to report that the Department of Consumer Affairs is providing a local Bellarine mobile service.

Consumer and tenancy advice will be available, with Advisers based at Ocean Grove Neighbourhood Centre, 91 The Parade, on a fortnightly basis, on Wednesdays.

**The dates for the rest of this year are:** Wednesday 19th October, 2nd and 16th November, 7th and 21st December.

This mobile, outreach service is designed to make it easier for people to get the advice they need locally.

I encourage any of you with queries or complaints to access this service. If you're not able to visit the service, telephone 1300 55 81 81, or online at [www.consumer.vic.gov.au](http://www.consumer.vic.gov.au) for information and advice.

Of course I am happy to hear from you if you have any difficulties with accessing the service.

*Until next time,  
Lisa Neville MP  
5248 3462.*



# Queenscliff and District Woodworkers Inc.

Well it's the time of the year when some of our members have returned from various places up north and our meetings are once again at full strength.

The club now enters the busiest time of the year, with two major events being planned.

The first is the toy program, and this year we are making toys for the Noah's Ark organization, that are associated with disabled children.

They have a Xmas party for the children each year, and we are supplying Santa with all the toys this year.

Also we are assisting the Drysdale kindergarden with wooden toys.

The second major event is our annual exhibition to be held at the United Church hall in Hesse Street Queenscliff on the 19 to 22 January 2006.

As part of the exhibition our club has an annual raffle of some excellent

pieces of woodcraft supplied by the members. Tickets will be on sale soon from our members.

Also tickets will be available at the exhibition, and the draw will be mid afternoon on the 22nd.

Our club is self funding, and the exhibition each year is our major source of funds, so please enter these dates in your diary and come along to see some superb woodcraft and assist our club.

## Chiropractors expose the secrets to staying younger and living longer.

Never mind the miracle cures and heralded fountains of youth, Australian chiropractors say the secret to longer life and increased vitality could be as close as a consult away.

"Living long and being vigorous and vital means maintaining overall physical and emotional wellness which is the mainstay of all chiropractors," said local chiropractor, Dr Sharon Pedersen-Jones.

"If the joints, muscles and nerves that make up your musculoskeletal system are kept functioning properly, you should add years to your life and life to your years," she said.

"Chiropractic is designed to optimise musculoskeletal health so that you can feel fit, flexible, and function better over the entire course of your life."

Dr Pedersen-Jones said Chiropractic was not a back-breaking exercise

but a health care system dedicated to conservative care.

"Chiropractors complete five years of university education and are well trained in maintaining wellness by gentle, reassuring, safe and effective techniques and counselling that can play a role in suspending the aging process," she said.

"Instead of reaching for the miracle drugs, Australians should invest in healthier life style choices that involve regular spinal checks, physical activity and good dietary practices," she said.

Given Chiropractic's holistic approach to health and well-being, Dr Pedersen-Jones said Chiropractors were skilled in dealing with many of the health problems commonly associated with ageing like arthritis, osteoporosis, aching backs and even a lack of energy.

"More and more aging men and women are relying on Chiropractic care to remove the underlying skeletal and muscular causes of the ailments that plague so many older individuals," she said.

The aged are encouraged to visit their local Chiropractor for advice on maintaining maximum health and improving joint and muscular mobility.

Dr Sharon Pedersen-Jones conducts free Half Hour to Health lectures at Corrective Chiropractic Bellarine in Drysdale every Tuesday evening at 6.30pm covering the best ways of improving and maintaining a strong and healthy spine and nerve system. Bookings are essential as seating is limited. If you would like to arrange an interview with Dr Sharon Pedersen-Jones or reserve a seat at an upcoming health lecture, please phone 5253 2800.



## Drysdale Motors

FOR ALL AUTOMOTIVE TUNING AND SERVICING

Specialising in LPG DYNO TUNING

Have your LPG vehicle Tuned on a "rolling road". If your car runs on LPG And hasn't been dyno tuned Then it hasn't been tuned.

- Roadworthy Testing
- Fuel Injector Cleaning
- Air Conditioner Servicing
- LPG Conversions
- New Car Servicing

44 Murradoc Rd, Drysdale, 3222.  
PHONE: (03) 5253 1033.

## Your kinda loan for your kinda home.

At Bendigo Bank we understand that buying a home is a big step. That's why we offer a wide variety of home loans that provide a great rate whether fixed or variable plus extra benefits. We make sure you end up with the right loan for your home.

For more information please call into your nearest branch at 44 Newcombe Street, Portarlington, or phone 5259 3266.

Bellarine Peninsula  
Community Bank<sup>®</sup> Branch Bendigo Bank

Subject to terms and conditions. Fees and charges apply. All loans are subject to the bank's normal lending criteria. [www.bendigobank.com.au](http://www.bendigobank.com.au) Bendigo Bank Limited, Fountain Court, Bendigo, Vic. 3550. ABN 11068049178 AFSL 237879 (S4754a) (15/09/03)



Happy hour and a half  
on Fridays 5pm-6.30pm

All new menus.  
Wednesday, Thursday  
night Meal Deal  
or our lunchtime weekday  
2 course Meal Deal.

Open - Wed to Fri 11am till late  
Sat 10am till late, Sun 10am - 4pm

16a High street, Drysdale 3222  
Telephone: 5253 3086



# Bellarine Peninsula Railway - Drysdale

Madness! That's how the BPR could best be described at present. With the 'Seaside Explorer' running every Tuesday & Thursday, the regular Sunday steam trips, complete rebuilding of our dining car (in world record time), huge amounts of track work, the construction of the station at Lakers Siding, on going development at Drysdale & Queenscliff etc etc- yeah, we have been busy over winter!

The down side is of course that our small band of volunteers are getting weary. If you are reading this & have a day or even a few hours to spare here & there, we'd love to hear from you. We are **DESPERATELY** short of station/kiosk staff in particular. Tuesday & Thursday's are especially difficult to staff our stations. No experience is required, all you need is a pleasant manner in which to interact with our customers.

Or perhaps you are retired & are looking for an outlet for your skills or want to learn new ones. We can help. Fitters & turners, chippies, sparkies, gardeners-you name it. Give us a bell.

Our 'Lakers Mob' group work on one or two days a week & already good progress is being made. The old original V.R hut from Geelong has been refurbished externally & the adjacent former Marshall Post office has been restored & kitted out with some authentic post office items.

The BPR dining car has been restored to an extraordinary standard. The volunteers at Queenscliff have done a truly remarkable job under a very tight deadline, a credit to them & a wonderful asset not just to BPR but to the entire district. Well done all! Now go get some rest!

The BPR has again benefited from

the assistance of the CoGG's Cr Tom O'Connor & the boys from the Drysdale Works Depot who have helped out with some very much welcome improvement all along the line.

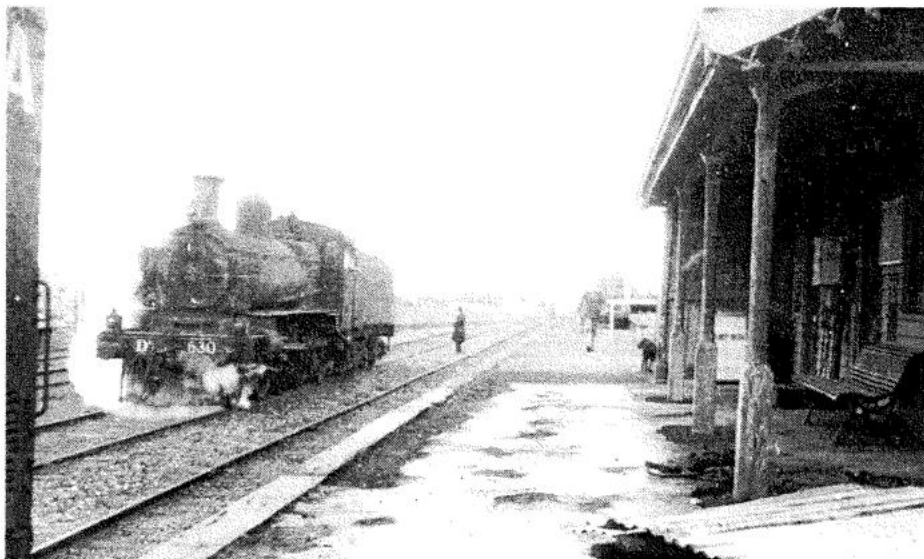
We send our love to volunteer Gloria Ostler who has reluctantly had to take a break from helping run the Drysdale Kiosk due to illness.

Get well soon Gloria. Gloria is an unbelievable volunteer who has turned up to assist on nearly EVERY mid week running day & often came along on Sundays as well. We hope she's back soon, the place is not quite the same without her.

Christmas- Not far off now. Gift ideas at the Kiosk include new release DVD's, high quality BPR caps & copies of Trains, Troops & Tourists (history book) If you are thinking of hiring your own train for your Christmas function, you need to speak to us NOW to avoid Disappointment. The charter book is filling fast.

Until next month, Take Care  
**Paul & Kate**

Drysdale Historic Railway Station  
24 hour Info Line 5251 3725  
[www.bpr.org.au](http://www.bpr.org.au)



*This photo was taken in September 1948 by Wal Larsen. Drysdale station is showing signs of wartime neglect as Guard Peter Romeo directs a shunting move. The corrugated iron in the foreground is part of the wreckage of the Curlewis & Leopold station buildings which were destroyed in a storm. Most of the roof of Curlewis was found floating in Corio Bay!*

## Delivering PC Solutions

We come to you!

NEED COMPUTER HELP AT  
YOUR PLACE?



IS YOUR COMPUTER SLUGGISH?  
DO YOU NEED INTERNET HELP?  
DO YOU NEED TO UPGRADE?  
DO YOU NEED A CUSTOM PC BUILT?  
DO YOU NEED HELP WITH E-MAILS?  
DO YOU NEED HELP WITH A VIRUS?  
DOES YOUR PC NEED A CHECK UP?

IF ANY OF THE ABOVE APPLIES TO YOU, STEVE AT **DP**CS CAN HELP. NO NEED TO UNPLUG ALL THE CORDS - WE COME TO YOU!

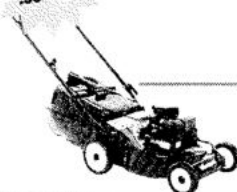
93 Beacon Pt. Road, Clifton Springs  
Ph: 5253 2558 Mob: 0405 523 606

## NEAL'S DRYSDALE Mowers & Chainsaws

Sales - Services - Spares - Repairs



NEW  
Ride-ons  
from  
**\$1999.00**



NEW  
Mowers  
from  
**\$319.00**

FREE pick-up and Delivery

Locally owned and operated by  
Neal & Liz Whelan

9 Mortimer street,  
Drysdale 3222 Ph: 5251 5003

## FOOT HEALTH CARE FOR ALL AGES



**Michael A. Nicol  
Sue Partridge**

General Consultations  
Diabetics and High Risk  
Orthotic Therapy  
Nail Surgery  
Veterans' Affairs  
TAC and Work Cover

DRYSDALE  
**5251 2958**  
27-29 High St. Drysdale



## What weed is that?

Did you know that in Australia weed spread is one of the most serious and costly causes of land degradation? Weeds cost the Australian economy more than \$3.3 billion every year. The cost of the damage to our native ecosystems could be just as big.

Can you identify common local weeds? Are they in your paddocks or gardens? Do you know that as a landowner you are legally responsible for controlling noxious weeds on your land?

On the Bellarine Peninsula weeds such as Gorse, Flax-leaf Broom, Cape Weed and Onion Grass, are impacting on farm productivity. Serrated Tussock has the potential to render most grazing land virtually useless for grazing.

These weeds and others such as Bridal Creeper (Smilax), Bellarine Pea, Boneseed, Sweet Pittosporum, Wild Watsonia, Pines and Italian Buckthorn are degrading much of the remaining native vegetation on roadsides, private property, bushland and coastal reserves. Their impact will cause the local extinction of more native species within 30 – 50 years, if not managed.

Our community needs more people to

act - even if it's only on your own land.

To promote weed awareness the Swan Bay Integrated Catchment Management Committee and Bellarine Landcare Group are undertaking the following activities.

A "Weed identification and control" information night. Guest speakers will be talking about aspects of weeds and their control. There will be abundant samples of named weeds for you to look at, great displays of weed photographs and opportunities to talk to others about the control of weeds you have issues with. The session is at the Marcus Hill Memorial Hall, Corner Bellarine Highway and Banks Rd, Marcus Hill on Wednesday 12th October 2005 from 7:30 p.m.

We are also circulating in local towns a "Weed Identification Display" featuring photographs of up to 40 local weed species across the Bellarine. The display has photos of most serious weeds in the area including Serrated Tussock. This is a great opportunity for anyone who would like to know more about the identity of local weeds. The display has multiple photographs of the weeds showing the different stages of

growth, allowing easy identification.

The display will be at the Queenscliff information centre /reading room from Monday 3rd to Sunday 9th Oct., the Ocean Grove Safeway from Monday 10th to Sunday 16th Oct., Wallington Mitre10 from Monday 17th to Sunday 23rd Oct., Drysdale Shopping Centre from Monday 24th to Sunday 30th Oct., Portarlinton Post Office from Monday 31st Oct. to Sunday 6th Nov. and St Leonards Newsagency from Monday 7th Nov to Sunday 13th Nov.

For more information call Steve Smithyman, Landcare Co-ordinator on 0417 231 853 or 52298432 during business hours.

For further information contact:

**Steven Smithyman**  
Swan Bay Catchment Officer / Landcare Co-ordinator  
Swan Bay Integrated Catchment Management Committee  
Phone/fax: (03) 52298432  
Mobile: 0417 231853  
email: [smithnam@iprimus.com.au](mailto:smithnam@iprimus.com.au)  
Website: [www.corangamite.landcare.net.au](http://www.corangamite.landcare.net.au)

## Drysdale Ladies Day View Club

Spring is here and hopefully the winter ills and chills are behind us. Even though the year is drawing to a close we still have many occasions to look forward to.

Our next meeting will be held on Friday 23rd September at 11 am at the Clifton Springs Golf Club. We welcome new members and look forward to seeing you there. For more information or inquiries please contact:

*Christine: 5251 1127 or Gloria: 5253 3256*

### ALINGA

#### LANDSCAPE DESIGN

*Plan your garden to make it part of your home!*

- On site garden consultations
- Expert advice in plant selection
- Computer generated plans and images of your new garden!

Neil Muhlhan

Ph: 03 5253 1299 email: [alingadesign@bigpond.com](mailto:alingadesign@bigpond.com)

### NEEDLE SYRINGE PROGRAM

Are you using drugs?

If so, then protect yourself from HIV and Hepatitis C.

Obtain clean fits from the Drysdale Community Health Service  
21 Palmerston Street, Drysdale.

**A CONFIDENTIAL service.**

**No questions asked.**

## AUSTRALIA Kings

Synonymous with funeral directing  
in the region since 1847.

Pre-paid and pre-arranged  
funerals available.



*Dedicated to exceeding  
your expectations*

**25 MYERS ST, GEELONG. 5222 3688**

**[enquiries@kingsaustralia.com.au](mailto:enquiries@kingsaustralia.com.au)**

**[www.kingsaustralia.com.au](http://www.kingsaustralia.com.au)**

# Lighthouse Theatre sings again

Music from the 1950s and 60s must surely hold a place in the hearts of many readers. For those who remember singing to Eddie Fisher, or The Platters, or Frankie Laine and many more, the coming musical production by the Queenscliffe Lighthouse Theatre should be high on the agenda of must see musicals.

The musical "NOSTALGIA - Melodies That Never Leave Us" will be performed over four days at the Senior Citizens' Hall, Symonds Street, Queenscliff on Friday 28 October at 7.30pm and Saturday 29 October at

2.00pm followed the next weekend Friday 4 November at 7.30pm and Saturday 5 November at 2.00pm.

"NOSTALGIA" is under the direction of popular Clifton Springs musical identity Alan Wilson and musical direction of Elizabeth Coyne. With a cast and crew of 25, the show will feature songs from an earlier era, songs that are still ever favourites.

Local Portarlington personality Joan Bell will give a lovely rendition of the Platters favourite "Smoke Gets In Your Eyes", and Alan Wilson sings a stirring "What Kind of Fool Am I".

A bracket of Frankie Laine favourites "High Noon", "Cool Water", "Ghost Riders in the Sky" and "Raw Hide" will be a real audience pleaser.

Tickets may be obtained from the Queenscliffe Visitor Information Centre, 55 Hesse Street (5258 4843). The \$10 ticket price includes a program and an invitation to join the cast and crew for light refreshments after the show.

"NOSTALGIA" is sure to be a favourite with readers who have fond memories of the 50s and 60s. Audiences are assured of a sentimental journey down memory lane.

## Are you a dreamer?

Have you ever dreamed about winning Tattsлото and being able to give huge amounts of money away to whoever needs it?

The more I talk to our local business people about giving, the more I find that all of us are dreamers. We dream about being able to help people less fortunate than ourselves. And we dream about being able to open our hearts and our cheque books without reservation, when we see a need.

I recently had a conversation with Bill Sheahan and Sue Dunstan of Drysdale & Peninsula Funeral Services. I know Bill and Sue to be very generous people, and there would be many local people who have experienced this also.

When asked if they factored giving into their budget, their "Yes" was followed by a long list of the various

clubs and local community events that they support each year.

Added to this there are always charities that tend to hit a soft spot. For Bill and Sue it's Kids with Cancer, the Guide Dogs and Paraquad. Their motivation for giving? Simply to help others and to support the community, knowing that every little bit helps and makes them feel good within their hearts.

Bill and Sue are well known business people in our community, having operated Drysdale & Peninsula Funeral Services for the past eight years. They don't expect recognition for their giving, and they say they will continue to give anyway, but they do agree that it's nice to know that people appreciate what you do.

The word "community" is made up

of two words, common unity, and that is what so many people who live and work in this area really desire to see. An extended family of likeminded people who take a keen interest in each other's welfare, and in all that is happening around them. We all have an opportunity to "add value" to the town we live in, by caring for and supporting one another.

We at Drysdale Community Church (formerly Drysdale Christian Fellowship) appreciate the contribution that people like Bill and Sue make to our community, and we would encourage our local residents to support the businesses that put so much back into this great community.

**Dianne Bennett**

(on behalf of Drysdale Community Church)

**Frank Burge Cars**

**KEITH PURCELL**

Phone: 5222 1606  
 Fax: 52218608  
 Mobile: 0418 554 011

172 Fyans Street, South Geelong 3220

Uniting Care

**CONCERN VILLAGE OP-SHOP**

Shop 4 Village Walk  
 19 Springs Road  
 Drysdale

Phone: 5251 3640.

We value your custom.  
 Donations of clean goods always welcome.

**MATILDA'S GIFTS**  
 MATILDA'S FURNITURE COLLECTIBLES

**OPEN 6 DAYS**  
 (Closed Tuesday)

- Dining
- Study
- Bedroom
- Entertainment

Huge collection of furniture and homewares, cane-ware, nautical & unique giftware.  
 Floor stock or made to measure.

*'Country atmosphere with old fashioned service'*  
 16 Collins Street DRYSDALE (Next to Hotel)  
 Phone / Fax: (03) 5253 1516

**DRYSDALE COMMUNITY CHURCH**

276-290 Jetty Road, Drysdale.  
 Phone: 5253 2241

We invite you to join us for  
**SUNDAY SERVICES**  
 9.00 a.m.  
 & 10.45 a.m.

Great worship, friendly atmosphere,  
 and a message relevant to today.  
 Tea & Coffee served after each service.

Kids Church and Toddler Church operates during the 10.45 a.m. Service.

**BELLARINE AUTO SERVICES**

Quality Mechanical Repairs  
 Tuning - Servicing  
 LPG Conversion - EFI  
 Tyres - Batteries - RWC  
 Licensed Vehicle Testers

Mortimer St. Drysdale  
 Proprietor: J. Pamplin

**Ph. 5253 1644**

The **SpringDale Messenger**

Large format  
**Messenger now available at the SpringDale Neighbourhood Centre.**  
 Just ask at reception

# Ladies Probus Club of Bellarine Inc. Registered No.A14696T

What a difference it makes to how one feels when the sun shines for a while, we smile more, flowers grace us with fantastic colours, and hopefully we get more exercise for our aging bones.

Our President Shirley travelled to China with some colleagues and had a wonderful holiday and many happy memories. Whilst away I was left to hold the fort for Probus and we also had very interesting meetings.

A member wrote an account of Life before and after a Bush Fire for the clubs Newsletter, it was a personal reflection for her and one she wouldn't wish to experience again. Our members are contributing to the Newsletter items and we all learn a lot about them, as well as when one talks to the members for five minutes on a chosen subject.

The invited guest Speaker for September was Leah Brown. A budding Opera Star.

Leah presented us with an update of what she had been doing since she was last with us, and her current ambitions.

Leah Brown has just completed her Bachelor of Music from the Melba Conservatorium of Music. Graduating with a high distinction. She was the holder of the Dame Nellie Melba Scholarship for three years and the Amelia Joscelyne Scholarship in her final year of study. She has been a previous winner of Geelong's annual star search, Soroptomist International Scholarship, Musical Society of Geelong' Scholarships and has also completed with Honors her A.M.E.B (Australian Music Examinations Board.) 7th Grade Singing and 5th Grade Theory. Her future plans are

to further her studies focusing in a career of Opera at either the Sydney Conservatorium of Music or the Australian Opera Studio if her auditions are a success.

What talent we have in our midst, such a lovely bubbly personality with a huge smile. This club was delighted to hear her again, and hope she will return again since she is a local girl.

Our next outing is to Have a Picnic at Hanging Rock on Friday 21st October. Groups to share picnics.

Our Speaker for October is the well known Channel Nine Newscaster, Peter Hitchener.

The activity groups, cards, majong, crafts, as does the luncheon group after the meeting, all continues as before.

*Iris Liz Tolton.*

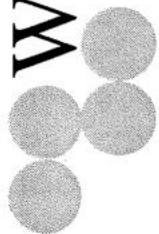
## Letter to the Editor

It was delightful to see such a wonderful display for Adult Learners' Week on Saturday 3rd September at Springdale Neighbourhood Centre. Unfortunately, with little publicity the event was disappointing.

Springdale now has a modern, new building which the community should come and see and support the various interesting and educational groups associated with the centre.

*Judy Williams - Clifton Springs*

W  
H  
K  
D  
a  
y  
N  
e  
i  
l  
s  
o  
n



Bookkeeping & Support Services  
Internal & External Audit  
Tax Return Preparation  
Specialised Consulting  
General Accounting  
Financial Planning  
Finance & Lending

**Ph: 5253 2862**

[www.dayneilson.com.au](http://www.dayneilson.com.au)

GEELONG - OCEAN GROVE - MELBOURNE - DRYSDALE



# What's happened and what's happening at the CLIFTON SPRINGS GOLF CLUB

## GOLFING MEMBERSHIP

Our new golfing membership season has commenced and for only \$440 you are entitled to 7 day golfing privileges up until 30th June 2006.

With the golf course in the best condition ever now is the opportune time to join Clifton Springs Golf Club and application forms are available from reception or the professional shop.

## GOLFING CALENDAR

Congratulations to Peter and Jan Nowicki on winning the prestigious Mavity Plate over 2 qualifying rounds with the runners up being Peter and Margaret Brooks on a countback from Kevin and Caroline Paisley.

The final of the McDonald Cup is to be played between Jim Reid and Rhys Keay and all members wish both players the best of luck for this prestigious honour board event.

The Ladies are in the middle of their Club Championships with the Men's to commence shortly and I wish all members the best of luck in their respective grades.

The Club also hosted to annual Lions Charity day with all proceeds going to the Bellarine Ambulance Service.

## GREEN FEES

With the weather on the improve and the golf course in superb condition, now is the opportune time to have a social game of golf and at only \$20 for 18 holes, all you need to do is give the golf professional shop a call on 52531488 to arrange a tee time, you will not be disappointed.

## GOLF CLINICS

The Club's 2 professionals Phil Hodge and Simon Martin are currently conducting clinics for all levels of golfers

from the beginners to personalised tuition for the more advanced golfer. All inquiries may be directed to the Golf Shop on 52531488.

## ANNUAL OPEN TOURNAMENT

The Club's Annual Open Tournament is being held from Sunday November 13th until Sunday November 20th with the first event being a mixed 4BBB stableford cumulating with a 4 person ambrose (2 male / 2 female) on the last day with a presentation dinner to follow golf.

There are events on every day with the Ladies Open on Friday November 18th and the Men's 36 hole Open on Saturday November 19th. Entry forms are available from the Club.

## TRIBUTE SHOWS

Saturday November 12th is the date for our next tribute show, the Eagles Experience direct from Queensland. Unfortunately this show is fully booked out and we only have an emergency list available.

## ANNUAL DINNER & PRESENTATION NIGHT

The Club's Annual Dinner and Presentation night is to be held on Saturday November 5th and is the night we recognise the golfing achievements of our members. Entertainment afterwards is local band Lunch Box Legends and tickets are only \$30 per person which includes a 3 course meal and entertainment. Bookings are now being taken for this gala night and can be placed with any staff member.

## NEW YEARS EVE

With New Years Eve only 2 months away bookings are now being taken for this very popular night and this year we have the return of the popular band

Cool Change to the venue with tickets only \$60 per person which includes a 3 course meal and entertainment.

## ANNUAL GENERAL MEETING

The Club will be holding it's Annual General Meeting on Sunday December 4th commencing at 10.00am and with all Committee positions vacant, I urge all members to consider standing for a position. Notices regarding the meeting can be found on notice boards at the Club and on our website - [cliftonspringsgolfclub.com.au](http://cliftonspringsgolfclub.com.au)

## CLUB SURVEY

Over the coming 6 weeks the Club will be asking Members, their Guests and Visitors to participate in a survey regarding our facilities and service. The aim of the survey is to give us feedback on what you think of our Club and would appreciate your input in completing this simple questionnaire.

## LUNCH & DINNER

With Spring now with us, now is the time to start planning for that Xmas function with Xmas only 14 weeks away. Peter and Cate will only be too happy to assist you with your function and are available on 52 512501. Our meal deal coupons continue their popularity and are applicable from Sunday evening through until Thursday Evening and at only \$5.50 for the second meal (conditions apply) this represents great value. And don't forget the lunchtime blackboard special meals with prices commencing from \$6.50.

*David Milne*  
Manager

## BELLARINE FENCING Co

We do  
Picket & Paling,  
Fences & Gates.

Phone: Andrew & Gayle Baylis  
on 5251 3090 or 0417 544 887

## Salvation Army Family Stores

Mortimer St. Drysdale  
Ph. 5251 2475  
Plenty of Bargains  
The Place to Shop

Come and see us We are here to Help You

## DRYSDALE CARPET COURT

CARPET - VINYL  
CERAMIC TILES  
FLOATING WOOD  
LAMINATE FLOORS

Proprietor: Neil Petrie  
Phone: 5253 1855 Mobile: 0419 519 030  
63 Murradoc Road, Drysdale.

**Clifton Springs Golf Club  
Play By The Bay**

**Golfing Memberships  
now available  
only \$440**

**Golfing membership up until 30/06/2006  
AND NO JOINING FEE**

**Green Fee Players Welcome  
\$20 for 18 holes  
Magnificent couch fairways  
Bookings 52531488**

**TRY OUR FABULOUS LUNCHES  
PRICES COMMENCE FROM \$6.50  
(Monday to Friday only)**

**October - November  
Live Entertainment  
(7.00pm-10.00pm)**

**Friday 21st - Colin Wells  
Friday 28th - Shaun Keet  
Friday 4th - Gary Tigani  
Friday 11th - Voltaren**



**Sunday to Thursday Evening  
\$5.50 Meal Deal**

**Buy one main meal off our regular menu and  
receive another  
of equal or less value for only \$5.50  
on presentation of this coupon.  
(not valid Public Holidays and Long Weekends)  
VALID until November 30th 2005  
Conditions apply**

**NEW YEARS EVE  
FEATURING COOL CHANGE**

**Saturday 31st December \$60 pp  
includes 3 course meal  
Phone for Bookings**

**SUPER FRIDAY NIGHTS  
Pots for glasses prices  
Raffles, Raffles, Raffles  
Mega Members Draw  
Free Live Entertainment  
Fantastic Views  
Dinner 6.00p.m. - 8.30p.m.  
Phone -52513391-**

## Ice - An important contact initiative

Rural Ambulance Victoria Paramedics are supporting the ICE program being introduced by Victoria's emergency services to make it quicker and easier to get in contact with someone who can help with vital information.

Station Officer Chris James said the program encourages people to store emergency contact details in their mobile phone under the word ICE - 'In Case of Emergency'.

"It's very simple to set up an ICE contact; just type the acronym ICE followed by a contact name (for example ICE - David) into the address book of your mobile phone, then save their phone number and tell your ICE contact you have nominated them as your emergency contact."

"Your ICE partner should have a

list of people to contact on your behalf eg. friends, family, your place of work and should know your blood type and any medical conditions that could affect your emergency treatment - for example allergies or current medication," said Mr James.

Mr James said it was possible to have more than one ICE contact, by saving the entries as ICE 1, ICE 2 & ICE 3.

"It is important to understand that ICE is not a substitute for the common sense steps you should take to notify friends or relatives when you are going out or going on a trip."

According to Mr James, in Victoria the police will normally be the organisation to make contact with the family of accident or emergency victims, and will usually do this in person. It is

possible that the emergency services will also make contact with family members in specific circumstances.

"Victoria's police and emergency services have well practiced processes in place to contact family members. However ICE is a welcome additional tool to complement existing procedures and it is another information source that is available to the Police and Paramedics in circumstances where existing family contact processes are unable to be used."

*Media information:*

**Chris James**

*Station Officer*

*Rural Ambulance Victoria Bellarine Branch*

*Ph: (03) 5253 1145*

## Peninsula Players Inc.



"The Great Divide Trilogy" by John D. Burls, is the title of Peninsula Players final production for 2005.

The play - a comedy - is unusual, because each act is a complete play which can also be linked to form a full length play, as in our case.

John D. Burls - author of "Barney" - which we performed in 2004 - is an

Australian Playwright and hails from Queensland.

We are delighted to be once again involved with this talented playwright's work. The play has been performed in Queensland to very appreciative audiences and has won awards in play festivals.

Dennis King, Director of "The Great Divide Trilogy" has once again put together a strong cast featuring - Elizabeth Thomas, Bodil Wright, Lee Foyster, Susannah Devenish, Monique Smith and Russell Campbell.

"The Great Divide Trilogy" is a modern play and deals with social issues. It's a hoot! We suggest this production is suitable for mature audiences.

Performance dates are Wednesday 16th, Thursday 17th, Friday 18th and Saturday 19th November 2005. 8.00 p.m. sharp at Drysdale Community Hall. Tickets \$12. Bookings at Drysdale Pharmacy from 26th October 2005.

**Rhena King**

*Publicity.*

**SCC**  
chartered accountants  
scott cleary coumans



- ▼ Tax Returns
- ▼ Small Business Advice
- ▼ BAS Returns
- ▼ Investment Advice

Belmont office - 5244 1622  
1st FLOOR, 35-37 THOMSON ST, BELMONT

Geelong office - 5222 1048  
103 YARRA ST, GEELONG

Drysdale office - CNR. OF SPRINGS RD. & HIGH ST, DRYSDALE

[www.scc.net.au](http://www.scc.net.au)

**Quality Butcher**  
PETER HOMMELHOFF  
**HOMMY'S**  
**QUALITY MEATS**  
*For something new and different*  
16 High Street, Drysdale 3222.  
Phone: 5251 2270

Lynette's  
User-Friendly  
Computers  
**Personalised**  
**Tuition & Training**  
**Ph: 5259-3963**  
Serving the Bellarine Peninsula



## Drysdale Rotunda opening



On Saturday 8th October the new Drysdale Rotunda was handed over as a gift to the local community from the Rotary Club of Drysdale.

Lisa Neville MP officially unveiled a plaque and opened the Rotunda which is located in the centre of the town and adjacent to the Senior Citizens Club.

Rotary President Mercedes Drummond said that the Rotunda was presented to the people of Drysdale as one of the clubs Rotary projects to celebrate

100 years of Rotary International Service and it coincided with 30 years of local service by the Rotary Club of Drysdale. It was funded by the Rotary Club with assistance from the Council of Greater Geelong and Rotary International and local Rotarians spent many hours in construction and painting.

The Rotunda is of heritage design to blend with the local architecture and is surrounded by a rose garden. It is hoped local residents will use the Rotunda as a place to relax and rest awhile.

### MAGGIE GOVE N.D.

Bowen Therapist  
& Naturopath

Member of A.N.T.A.

**Drysdale: Clinic 03-5251 1188**

**Ah 03-5253 2230**

(Rear of Elegant Profile)

### Naturopath

Lisa Taylor N.D. (A.N.T.A.)

Drysdale Community Health Centre  
21 Palmerston street

Monday & Thursday  
appointments ph: 5251 2291 AH: 5251 2544

Also available at Carmoora Clinic, 343 Moorabool St.

Wednesday & Friday: Ph 5223 2616

Specialising in women's and children's health using  
Herbal, Homoeopathic and Soft Tissue Therapies.

## Quiz Questions

- 1 By which name is Jerome Howard better known?
- 2 Who are the Flintstones next door neighbours?
- 3 What are the christen names of the Leyland Brothers?
- 4 With which sport do you associate with the term 'Hang Ten'?
- 5 What is the capital of Kenya?
- 6 In the song North to Alaska who is Big Sam's partner?
- 7 In McHales Navy what number was his boat?
- 8 Which body of water separates Mozambique from Madagascar?
- 9 Which Victorian town featured as Coopers Crossing in televisions Flying Doctors?
- 10 Who was captain of the starship Enterprise in Star Trek?
- 11 In which year was the cowboy legend, Wild Bill Hicock shot dead?
- 12 Which horse won the 1978 Melbourne Cup?
- 13 What is the address of Britain's Prime Minister Tony Blair?
- 14 Who was the swingenest Alligator in the swamp (cartoon)?
- 15 Grace Kelly became Princess of where?
- 16 Can you name two of 2003 three Brownlow Medalists?

Answers page 19

**BELLARINE**  
VETERINARY PRACTICE  
— ANIMAL HOSPITAL —

**OPEN DAY & FUNDRAISER**

**Sunday 30th October**  
**10.00am - 2.00pm**

All proceeds to go to Geelong Animal Welfare

**108 High St, Drysdale**  
**5253 1393**

# Drysdale Senior Citizens club

Well time is passing so quickly and before we know it will be Christmas. So the Drysdale Senior Citizens Club have a few things coming up.

In November we have bingo on the first Monday with a trading table this starts at 1.15pm and afternoon tea included. We don't have big prizes but we have lots of fun, everyone is welcome. We have a fashion show by Cliché Clothing company, on Friday 18th

November, starts at 1pm and includes a nice afternoon tea. The cost is \$2.00 at the door, come along, everyone is welcome.

We are having an open day at the club on Monday 14th November, this is a chance for you to see what we have to offer, anytime between 1,15pm to 3.45pm. There will be a nice cup of tea at 2.30pm. Looking forward to seeing you.

On Monday December the 12th we

are having our Christmas dinner and entertainment this is for members only, we always have a lovely day. So this is some of the things we do in our club, plus lots of other activities. We send best wishes to all our sick members and hope to see them back soon.

*Esther Lornie President  
Mary Hose Secretary.*

## Courses commencing after 22nd October - 2005

**First Aid - update**

**First Aid - Level 1  
Accred**

**Arm Chair Travel**

**First Home Buyers Info**

**Gardening - Native  
Trees/Shrubs**

**Making your own  
Children's Clothes**

**Scrapbooking Workshop**

**Advanced Computer  
Skills**

**Digital Photos**

**Desktop Publishing**

**MYOB for Beginners**

**Setting up a Website**

For more details, please contact SpringDale on 5253 1960.

### The *Life* *line* Shop

Good quality clothing & bric-a-brac.  
Donations of clothing & bric-a-brac  
always welcome.

"Village Walk"  
Shops 9 & 10, 21  
Clifton Springs Rd. Drysdale.  
Ph: 5253 2168

### DON'T LET YOUR COMPUTER BEAT YOU

We can help you:

Improve your  
productivity;  
Clean up and/or  
prevent scumware;  
Improve computer performance;  
Edit your digital photos.



Have a private lesson — your  
house or ours

Contact us for assistance  
with any computing concerns  
or queries you may have

Phone Joy or Barrie on 5251 2115  
CLANCIE Specialised Services  
www.CLANCIE.here.ws

### Ocean Grove S.L.S.C.

## 2005 - 2006

# NIPPERS

## Registration Day

### Saturday December 3rd

9 am - 11 am

**\$55/child or \$160/family**

Visit [www.oceangroveslsc.asn.au](http://www.oceangroveslsc.asn.au)  
for more information

### Quiz Answers from page 18

- 1 Curly (The Three Stooges)
- 2 Barney and Betty Rubble
- 3 Mike and Mal
- 4 Surfing
- 5 Nairobi
- 6 George Pratt
- 7 PT 73
- 8 Mozambique Channel
- 9 Minyip (The Wimmera)
- 10 Captain Kirk
- 11 1876
- 12 Arwon
- 13 10 Downing Street
- 14 Wally Gator
- 15 Monaco
- 16 Nathan Buckley, Mark Ricciuto,  
Adam Goodes



**MORTIMER  
PETROLEUM**

**PETROL STATION &  
CONVENIENCE STORE**

97 High Street Drysdale Phone 5251 2603  
Petrol, Autogas Bait & Fishing Supplies

## CAR WASH

Open 6.00am-10.00pm

## Bellarine Bin Hire

**Drysdale - Ocean Grove**

**1.5, 2.5 & 4m<sup>3</sup> bins**

**FREE CALL**

1800 104 313 | 0419 543 283

Servicing the Bellarine Peninsula

# SPORTS REPORT

## Clifton Springs Tennis Club Inc.

Jetty Rd Reserve  
Clifton Springs

### Contacts

- Seniors - Alison Ph 52512543
- Juniors - Anna Ph 52512285
- Night - Bruce Ph 52505427
- Ladies - Debbie Ph 52532735
- Coach - Mark Ph 52414089  
(Mobile no. 0416288956)

### Congratulations

Congratulations to our two junior premier teams, Section 11 Girls & Section 16 Girls. In a thrilling match our Section 11 team held it together to remain undefeated champions for the season. Well done Sarah, Alex, Renee, Georgia & Tamara. C/S 3-27 def OG 3-26. The Section 16 girls reversed the results of the first semi to bring a convincing victory. Well played Skye, Charlie, Julia & Jeanette. C/S 5-30 def OG 1-23.

### Summer

Summer Saturday season starts on 8/10. We have 3 Senior teams, Sections 6, 11 & 12. With 12 Junior teams it's another busy summer. We have been graded into Sections 3, 10, 16, 21, 22, 23, 25, 26, 28, 31 & 33. So, there is something for everyone. Good luck to all teams & we hope you enjoy the tennis.

### Mid week ladies

The Tuesday ladies competition is drawing to a close and our Section 1 team is in second place & looking confident for a finals berth. Our other teams have had an enjoyable season and there's always next time.

Names are being taken now for the next Mid-week season so give Debbie a call on 52532735 if you are interested. We are also looking to start a Thursday "one site" competition in February. You can put your name down as an individual or get together a group of friends to play as a team. Again, call Debbie for information. Don't forget our Monday morning social hit. Everyone welcome to come down.

### Night

Summer nights are just around the corner! It's a new season for Monday & Wednesday comp. This season the Mondays are Superheroes with Batman, Catwoman, Superman, Spiderman & Phantom making an appearance. Wednesday night are the local surf breaks (not sure how well you can play in flippers & a wetsuit!) Thursday nights are mid way in the season with the Cowboys leading from the Grass-

hoppers. We are looking to start a Tuesday "men's night" in October and have a number of names from interested players. Can we interest you in Night Tennis? It's social & lots of fun & we cater for all standards. Call Bruce on 52505427 for information & to register your name. We have permanent & emergency spots for all nights.

### Social Scene

Coming up on the social calendar is our "Welcome Night" on 11/10 at 7.00pm.. It's free, byo bbq & drinks. Wilson are coming down to give a demonstration of new racquets available. Here's a chance to get together & meet others in the club.

Sunday 4/12 is our "Get Together Golf" day. We have arranged for 9 rounds of golf & bbq lunch at Curlewis Golf Club. Time to discover our hidden talents (or lack of) & have fun.

*Section 11 & 16 Premiers*



Phone: 5253 2099

- \*Counselling Centre
- \*Life Skills Seminars
- \*Foodbank Plus
- \*Second Chance Clothing



18-20 HIGH ST. DRYSDALE.

OPEN 7 DAYS A WEEK

11am - 4pm

All Public Holidays except: Good Friday, Anzac day,  
Christmas day, Boxing day and New Years day.

New Members always Welcome

Ph: 5251 1605

## DRYSDALE REMOVALS & STORAGE

Local, Country,  
N.S.W. & S.A.

PH. (03) 5251 3674



# You'll be

# SOLD

# on Allpoints @Guyett.

Allpoints@Guyett is your first step to successfully marketing and selling your property.

Our proven sales record speaks for itself. Whether you're selling or buying a property - residential or rural, we have the experienced staff with all the necessary local knowledge to gain you the best outcome.

**Allpoints**<sup>™</sup>@Guyett



Ocean Grove  
5255 1000

Barwon Heads  
5254 3100

Drysdale  
5251 2847

Leopold  
5250 1533