

The SpringDale Messenger

Your Free
Community
Newspaper

Compiled and published by the SpringDale Neighbourhood Centre Inc A002916V

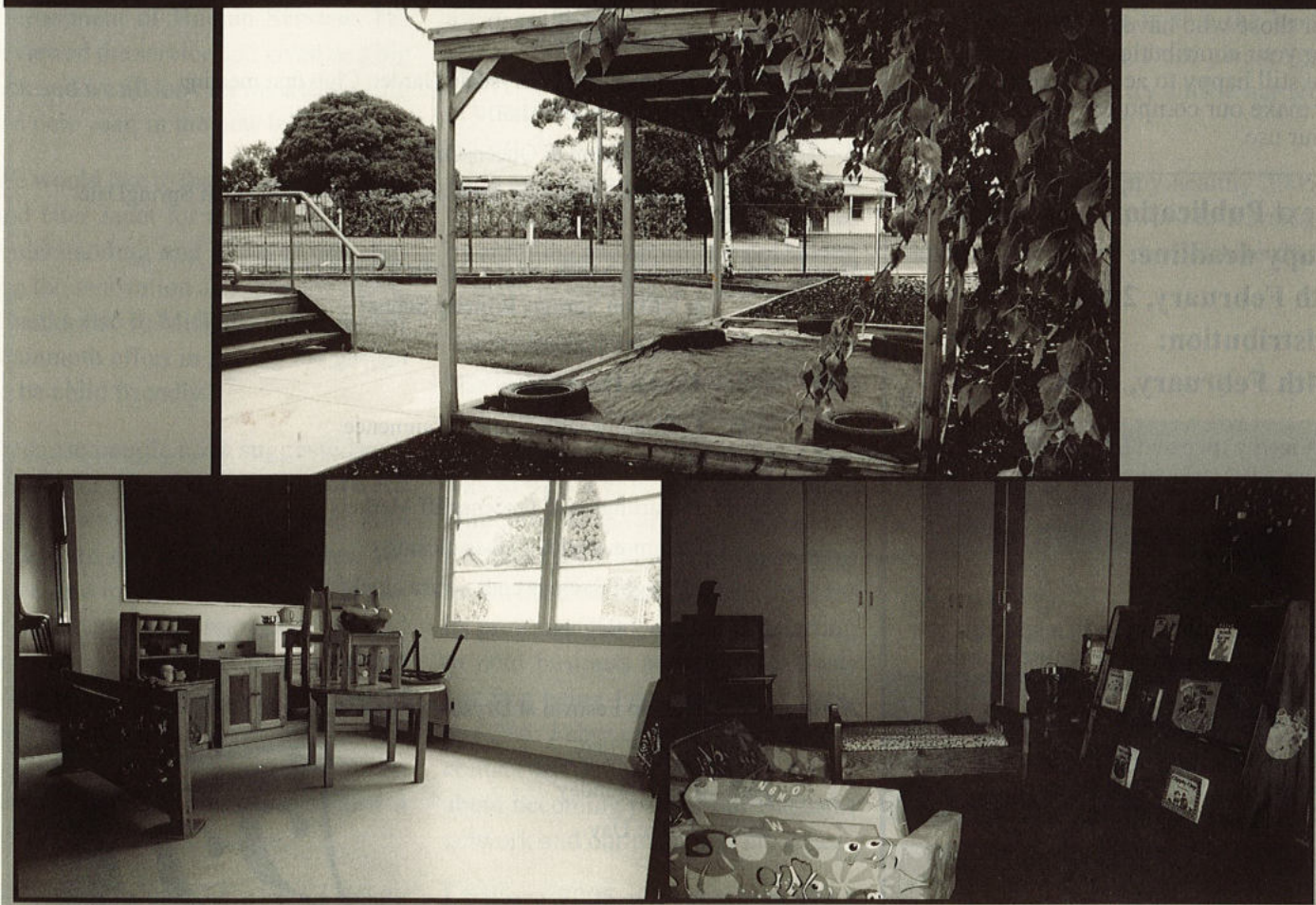
Circulation 4,500

ABN 21 404 220 267

Vol 16 No. 1, February 2006

SpringDale Occasional Care is ready for 2006

A well appointed indoor playroom, a spacious new sand pit and soft new green turf and 2 excited staff members who are ready for the new year - see page 8 for more details



**DRYSDALE
VILLAGE
HARDWARE**
(03) 5251 3267

*YOUR HANDY
HARDWARE
STORE*

THE ARCADE
HIGH STREET
DRYSDALE, 3222.

Westpac

- OPEN SATURDAY
- HOME LOAN CENTRE
- GOOD TERM DEPOSIT RATES

CONTACT: WAYNE, LISA,
BEV, PAM OR MICHELLE
5251 1624

**SHOP 9, SUPERMARKET
COMPLEX, DRYSDALE**

The SpringDale Messenger

The SpringDale Messenger is compiled by the SpringDale Neighbourhood Centre Inc. A0024916V, 14 Princess St. Drysdale.

Postal: P.O. Box 80, Drysdale, 3222.

Editorial and Enquiries:

PH: 5253 1960.

FAX: 5253 3050

To improve the administrative arrangements for the Messenger we are encouraging all contributors to provide their information on disk (Word) or email it to us – messenger@springdale.org.au

For those who have difficulty providing your contributions on disk we are still happy to accept written copy or make our computers available for your use.

Next Publication - March 06

Copy deadline:

6th February, 2006

Distribution:

24th February, 2006.

Views expressed in this newsletter are not necessarily the views of the Publisher, the SpringDale Neighbourhood Centre Inc.

Advertising:

To ensure publication in a specific issue, copy must be submitted prior to deadline.

This includes both new adverts and alterations to an existing advert.

Layout and Design of this issue by Pagination Design Services, Geelong.

For any queries about advertising, please contact Anthony Zavaglia at Pagination Design Services.

Ph: (03) 5223 2494

Fax: (03) 5221 8063

springdale@pagination.com.au

Max Simmons PhD (Flinders) Health and Counselling Psychologist

- * Sleep difficulties
- * Persistent pain
- * Anxiety & depression
- * WorkCover and TAC injuries
- * Substance use
- * Life skills

27-29 High Street, Drysdale, Vic. 3222
Phone: (03) 5251 2958 Mobile: 0414 833 290
email: max.simmons@datafast.net.au

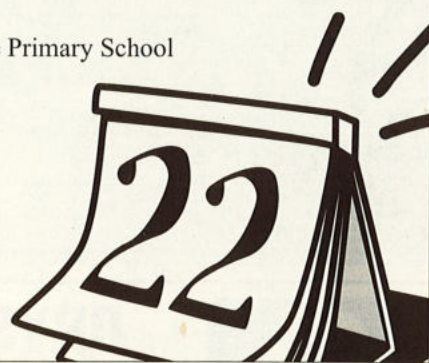
Community Calendar

Springdale Community Calendar - a Springdale Neighbourhood Centre initiative to support the whole community.

This calendar will enable you to quickly look up what is happening over the next couple of months (maybe longer) in our area. There will be a calendar for the next 12 months put on our website - accessible to all groups to help when planning events. If you would like to place an event on our calendar on the website and also in the next couple of issues of the Springdale Messenger - then please email, write or ring the details of the event through to the Springdale Office.

2006

- | | |
|-------|---|
| Feb | 5 - 6th Queenscliff Lighthouse Theatre - Open Auditions |
| | 6th Bingo Resumes - Drysdale Senior Citizens |
| | 14th C.W.A. - February Meeting - Sausage Sizzle Luncheon at Noon
Senior Citizens is having Danny Blumm fashions at 1.30pm. |
| | 15th Clifton Springs Golf club Annual Pro-AM. |
| | 19th Drysdale Market |
| | 20th Clifton-Springs/Drysdale Garden Club first meeting
Uniting Church Hall, |
| | 26th Portarlington & Queenscliff Markets |
| | 28th Inaugural Business Network Breakfast 7.00 am at SpringDale |
| March | 4th Drive In Movie Night - CHICKEN LITTLE
at Clifton Springs Primary School |
| | 10th Term 1 Finishes |
| | 13th Labour Day Holiday |
| | 15th Commonwealth Games Commence |
| | 19th Drysdale Market |
| | 26th Portarlington & Queenscliff Markets
Commonwealth Games closing
Daylight Savings ends - turn clocks BACK one hour |
| | 27th Term 2 Begins |
| April | 1st Bunyip Festival at Drysdale Primary School |
| | 14th Good Friday |
| | 16th Easter Sunday |
| | 25th Anzac Day |



The Drysdale...

COFFEE • LUNCH • DINNER

OPEN 7 DAYS

Lunch and dinner
Reservations: 5251 2301

Sports bar • TAB

- Kids Playground
- Alfresco beer garden

DRYSDALE HOTEL High Street, Drysdale.



Drysdale Physiotherapy & Sports Injury Clinic

- Spinal ■ sports ■ Manipulative ■
- Arthritis ■ Workcover ■ TAC ■ Vet Affairs ■
- Hydrotherapy ■ Exercise Rehabilitation ■

Peter Terry MAPA, MPAA
and associates

Ph. 5251 2958

27 - 29 High Street, PO Box 179, Drysdale 3222

Happy New Year to all

During the last month or so we've had another huge change at SpringDale and that was the move of our Occasional Care from our middle building to our now enormous Occasional Care area that fronts onto Princess Street. The Department of Human Services has reviewed the service and given us a big tick and we all look forward to starting the new year, in the new building.

We would like to thank Jean and Sonia and later Janet for their patience and understanding and extra efforts during the renovation and then the move. Thanks also to Michelle Davis for her mammoth effort in getting the garden to be child friendly.

Because people have suggested new classes or tutors have come forward with other skills – we have been able to extend our courses on offer. We have also invested hundreds of hours into getting a course guide printed for the whole year. It was delivered just before Christmas – if you would like another copy sent out to you please give us a call or drop us an email – or pick one up and have a guided tour of the centre.

Unfortunately there have been a couple mistakes printed in the course guide.

We do apologize for these, most of the mistakes have occurred in setting up new courses. Next print should see these fixed – just confirm the details of your course when booking. (Also a comprehensive list of altered courses are over the page.)

We are offering a couple of longer courses due to community requests – Cert 3 in Aged Care, Integration Aide and Hospitality – we hope that our community supports these courses by enrolling and appreciate not having to drive to Geelong to increase skills.

We are trying to also bring businesses together to have a consolidated voice in the development of our community. One of our leaps into this area last year was to start a Business and Services Directory for the area – we were able to encourage a number of Businesses to join the directory and help to pay for its printing. This year we are starting to hold business network breakfasts our first being Pancake Day – Tuesday 28th February at 7.00am. Please contact SpringDale for more details about becoming part of our Business network and our inaugural breakfast.

I believe 2006 will be an exciting year and I hope we can be ready for

all the questions and suggestions that our Community will put to us – I hope that everytime you speak to, visit, or read something from SpringDale Neighbourhood Centre it makes you feel a little happier and a bit more pleased to be living in this the best part of the world. (If not please let me know so we can try a little harder to achieve this goal)

Hope you have a happy healthy 2006 and that you look forward to learning something new each day – I love that part of life !!

Yours very sincerely

Anne Brackley

on behalf of the SpringDale Neighbourhood Centre team

SpringDale Facilities

INTERNET COSTS

\$1.50 per half hour, 20 cents per printed page

PERSONAL USE OF COMPUTER

FREE, 20 cents per printed page

PHOTOCOPIES

A4 - 20 cents per copy

A3 - 60 cents per copy

FAX MACHINE

Local rate - 50 cents for the 1st page
10 cents per page sent after the 1st

STD rate - \$1 for the 1st page,
20 cents per page sent after the 1st

**Need a Will,
Power of Attorney
or Probate for a
loved one's estate?**

Come in for a free chat

RISTEVSKI
LAWYERS

1 High St., Drysdale
(old Post Office) Ph: 5251 3453

Civil Celebrant
Heather Spry

Grad. Dip. Civil Ceremonies (Monash)

Modern - Creative - Unique

5259 1383

Mobile: 0411 239 404
email: hspry@netconnect.com.au

Where and What is SpringDale?

A few days before Christmas I overheard a woman in the Supermarket complaining to a friend that SpringDale wouldn't be open again until the end of January. I didn't catch the reason(s) for her complaint but she did cause me to reflect that there are many members in our community who know very little about the SpringDale Neighbourhood Centre.

So where is SpringDale? For the past 15 years it has been housed in a small cottage directly behind the Community Hall which is in the main street of Drysdale. It has now expanded into the new extension at the side of the Hall. If you haven't been into our new premises, do come and have a look. At any one time you are likely to find a variety of classes being conducted in, or special interest groups occupying, the kitchen, the computer room, the hall, and the recreation room, and maybe small groups in the foyer playing board games such as chess, mahjong or scrabble.

Funding from municipal and government bodies covers one half-time salary

and student fee subsidies. The various activities of the Centre have to be self funding but fees are kept down to a 'break even' point. Just on two years ago SpringDale had a substantial five figure deficit and was in danger of closing. Anne Brackley took on the job of Coordinator in a voluntary capacity, putting in 60+ hour weeks to turn the finances around. A half-time coordinator position and the two child care workers are now the only paid positions.

SpringDale operates with a small army of volunteers. These tend to fall into one of two categories — older people (usually women), most no longer in the paid workforce, who want to give something to the community, and young people who are looking for paid employment and are learning some useful workplace skills while searching. Volunteers typically put in a half to two days a week at the Centre. Our volunteers come with a wide variety of background experiences and we have some very skilled and capable people among them.

Each term a range of classes is offered,

and, yes, most of the tutors are paid for their services. However, remuneration is not their motivation. Our tutors enjoy the opportunity to share their knowledge, and often put in considerable time outside the classroom preparing for their classes. Most classes are small, and they provide a great opportunity to meet with others and to learn something new in a friendly and relaxed atmosphere. The fees cover expenses and overheads. Several of the courses qualify for external funding grants and at a cost to students of \$1.75 per hour of tuition in 2006 these are a terrific bargain for those who qualify for the subsidy.

Occasional Care is offered for parents who want or need some time to themselves. The Centre caters for a maximum of fifteen children. In 2006 additional afternoon sessions are being offered which may allow some mothers the opportunity to attend afternoon classes at the Centre. The children have moved into the old cottage, now almost unrecognisable after extensive renovations. It is a lovely, open, light,

Keryn Louise Dancing Academy - Drysdale

Uniting Church Hall - Drysdale

Classes held Monday and Wednesday

Principle teacher - "Debbie Lee"

Classes for boys and girls 4yrs. old to teenage

Hip Hop/Funk - Tap Jazz - Song and Dance

- End of year performance held at Ford Theatre, GPAC. (No sewing involved)
- Enrolments being accepted for 2006
- New students and beginners welcome

Let's dance

Phone Debbie Lee - 5250 3244 or 0418 317 487

Fun and caring class environment providing experienced dance tuition

colourful area, made even lovelier when young children are occupying it. If you are the parent of a young child, do consider giving yourself and your child a treat and book your child in for an occasional session.

The various special interest groups that use the premises are usually initiated by an enthusiastic individual who would like to get together with others who share that interest. Once again, they are relaxed and friendly groups of people. Most groups would benefit from having more members. Joining a group when you are the only newcomer may seem a bit daunting, but soon you will know everyone too. There are groups for parents, for adults who enjoy board games, craft and art groups, music, plays, travel, and more. If you don't know what groups exist, have a look at the *Course and Opportunity Guide* (available from SpringDale if you've lost your copy). If you can't see anything that interests you, Anne would welcome your suggestions for new groups, particularly if you offer to help get them started.

Finally, the Centre offers a variety of other services: sending and receiving faxes, use of computers including the Internet, photocopying and more. At tax time there's free tax help for those on low incomes, and 2006 sees the start of a free legal service. The *SpringDale Messenger*, providing news of local happenings, is produced monthly.

If there is anything else that you think SpringDale might offer that would benefit the community, Coordinator Anne would like to hear from you. The Centre is open 9:30-3:30 during school terms.

Joy Teague

Honorary Secretary, Tutor, Interest Group Facilitator and Volunteer (but not retired), and very pleased that the Centre was closed for six weeks, even though several of us had less than 2 weeks away from it!

CLIFTON SPRINGS PLAYGROUP INC.

Playgroup is open on
WEDNESDAYS
10.00 to 11.30am

TUESDAYS AND FRIDAYS
9.30 to 11.00am
(except school holidays)

At the CLIFTON SPRINGS
COMMUNITY ROOMS
(by the open air swimming
pool at the Golf Club)

Playgroup is for children aged
from Birth to Kinder.

A warm welcome is extended
to you. Come on any day and
meet new friends

FOR MORE
INFORMATION PHONE
JULIE: 5251 2627
OR SHELLEY: 5253 1897



ARE YOU OVER THE AGE OF 50?

DO YOU NEED TO LOSE WEIGHT?

WOULD YOU LIKE TO ENHANCE YOUR LIFESTYLE?

ARE YOU MAKING USE OF THE GYM

2- 3 TIMES PER WEEK?

Research shows that weight resistance training is helpful in maintaining and improving the health of the elderly in our society. Many people with Arthritis, Diabetes, Osteoporosis and Heart conditions, benefit by working out at the gym regularly.

COME ALONG TO OUR INFORMATION SESSION

MONDAY February 6th 2:00PM

AT

U2 FITNESS CENTRE

33 MURRADOC ROAD, DRYSDALE

Learn how you will benefit from a fitness program. We look forward to meeting you.
Please book your place on : 52 531 795

Amendments to the SpringDale Neighbourhood Centre Course and Opportunity Guide for 2006 as at 6th January 2006

All the way through the guide where you see NE please read NEW – you might have thought it was a code – but it was an error unfortunately introduced in printing.

Aged Care Course – Certificate III in Aged Care – Accredited Course (CHC30102) – the fee is \$536 (including \$125 first Aid + \$15 Police Check) + \$20 Services fee – subsidized fee is available upon request. If enough people request child care – we will make it available on these days.

English Grammar Course – 3 sessions – Course fee \$40

Introduction to Hospitality

We are offering training towards Statements of Attainment from Certificate III in Hospitality this is accredited training – contact SpringDale for the Accredited codes.

Responsible Service of Alcohol - Accredited Course – course fee is \$65

Responsible Service of Gaming – Accredited Course – course fee is \$85 and is actually 6 hours in duration and is

Vegetarian Cooking – will now run from 7.00pm – 9.00pm and will cost \$50 for 3 sessions

Strength Training for Over 50's will be on Wednesday nights starting Wed 1st February please contact Drysdale Physiotherapy and Sports injury Clinic to book in and for obtain a medical referral form for your Doctor to complete prior to starting the class.

Gallipoli – A disk is available for viewing at Springdale. Please ring to arrange a time.

Business Breakfast – our first – Tuesday 28th February at SpringDale 7.00am – 8.30am cost - donation to Pancake Day charity. Please contact SpringDale for more details.

Music and Movement is on 9.15 - 10am, Wednesday mornings and cost is \$50

We hope the rest of the course guide is correct and hope there is something in here for you.

We'd also like to call for expressions of interest and for people who might like to share their skills in: Picture framing, Fly Tying, Model making.

We have tried to make many people's dreams come true in the last 12 months – maybe you can help make others into reality!

Please feel free to suggest any other ideas for courses and we'll try to add them to our ever increasing list.

Happy New Year from Anne Brackley and the SpringDale Team.

OSTEOPATHY

Gentle, effective treatment of musculoskeletal pain for the whole family

Wrist and hand Pain

Elbow Pain

Headaches and Migraines

Neck pain

Shoulder Pain

Breathing Disorders

Digestive Problems

Pain during pregnancy

Low Back Pain

Hip Pain

Arthritis

Muscle Strains

Sciatica/Neuralgia

Knee Pain

Work and Sports Injuries

Foot and Ankle pain

Dr. Belinda Kelly

B.Sc. (Clinical Science) M.H.Sc. (Osteopathy)

Registered Osteopath, Member of the Australian Osteopathic Association

OSTEOPATH NOW AVAILABLE AT

THE DRYSDALE CLINIC

15 Collins St, Drysdale

Ph: 5251 2865

Private Health Insurance approved, EFTPOS facilities available.

Work Cover , TAC and DVA patients welcome.

A new resident artist and teacher



News for our art community or our potential art community... Introducing Annette Playsted – visual artist

Annette Playsted is a practising artist; a registered secondary Art teacher and examiner, and an artist's mentor. She now lives at Drysdale on the Bellarine having moved from East Gippsland in April 2005.

As a young person, Annette spent much of her free time bushwalking through the natural beauty of the coastal and wilderness areas of Tasmania. Out-

standing environments for a landscape artist intent on recording the textures, contrasts, rhythms and colours of the natural environment. Over the past years she has continued that study through the lake and coastal landscapes of East Gippsland and more recently, on the Bellarine. Fascinated by the landscape within even the smallest natural remnant, her focus has become more intimate and she has recorded the patterns, the striking or subtle colour shifts, the surface changes and rhythms

of natural objects, and their resilience against the elements.

Drawing is Annette's preferred medium; in particular, the vibrancy, subtlety and colour range provided by oil pastels, but she is also a painter of both delicate water colours and bold acrylics on canvas. As an Art teacher she also has valuable experience in sculpture, printmaking and ceramics, as well as design principles, history of art and art appreciation.

In her capacity as a teacher and mentor, Annette is convinced creativity is within all of us and just requires to be nurtured and developed. Consequently, she will be tutoring in Art at the Springdale Centre commencing in Term 2 2006. Beside running courses for those wishing to discover and explore their artistic side, she is also interested in developing camaraderie groups for people who make art as a hobby and may enjoy feedback and the development of new or advanced skills. Interested people can contact the Springdale Centre for more information about the range and times of these courses.

Annette's new collection, comprising strong shoreline themes, will be exhibited during March 2006 at the Old Mill in Portarlington.

Neighbourhood Watch for Drysdale

Currently there are two Neighbourhood Watch areas operating in our area. They are both in Clifton Springs. They are north of Bayshore Ave and Whitcombes Rd and are separated by Beacon Point Road. Attempts to start additional areas in Drysdale/Clifton Springs have not been successful, due mainly to a shortage of residents willing to become involved. Doug Palmer (5251 2522) and Angela Chisholm currently are spearheading another attempt to form a new Neighbourhood Watch group in Drysdale. A meeting to get this group off the ground is scheduled for Thursday 30 March 7:30–9:30 in the Drysdale Community Hall. Further details will be provided closer to the date. All Drysdale residents are invited to attend. The remainder of this article provides some information about Neighbourhood Watch in Victoria. It has been 'lifted' from information provided on the FAQ section of

the Neighbourhood Watch web site at www.neighbourhoodwatch.com.au.

Neighbourhood Watch in Victoria was started in 1983 because it was realised that the Police alone could not control the rising crime rate, in particular burglary and related thefts. Neighbourhood Watch is a community based crime prevention program that aims at reducing the incidence of preventable crime such as burglary and theft as well as promoting closer community ties. The program educates residents on security and safety and the reporting of suspicious incidents to the Police.

To start an Area, several requirements must be met that include the size and population of the proposed area. Other factors such as the crime rate and community interest in the area are also considered by the District Neighbourhood Watch Police Coordinator before

starting an Area. Locally, there are a number of positions available where your assistance is needed. These include Zone Leaders, Area Coordinator, Publicity Officer/Newsletter Editor, Secretary, Treasurer or as an assistant to any one of these positions. A metropolitan area usually consists of approximately 600-800 homes with the location of other existing area boundaries being taken into consideration. The area boundaries never overlap; ideally they will abut each other. Each area is sub-divided into smaller blocks called zones to simplify the management of the area. Depending on the size and geography of the area, it is possible for a Neighbourhood Watch area to have as many as 35 zones or as few as 15 zones. The number of zones depends entirely on the geography of the area and how many homes the volunteers can effectively and efficiently service.

OCCASIONAL CARE

We are excited to announce the GRAND OPENING of our new room at Springdale Neighbourhood Centre. If you are looking for occasional care for your child or children please feel free to call in and see what we can offer your family.

Occasional Care has been available at Springdale for over 10 years and has been a well used facility for families with children from 0 to 6 years. We provide a variety of indoor and outdoor activities for the children encouraging all areas of development. We believe children learn through play and the environment provides this opportunity. We aim to enhance each child's physical, social, emotional and intellectual development through age appropriate activities and opportunities. The chil-

dren enjoy a snack time together (snack provided from home) and on 2 days we have lunch together (lunch provided from home) encouraging discussion about healthy eating etc.

We encourage families to be involved in any way they can. The program is based on individual observations of the children which parents have the opportunity to access at any time.

We have sessions each day of the week as follows:

Monday	9.00a.m - 2.00
Tuesday	9.00a.m - 12.00 1.00pm - 4.00 (if viable)
Wednesday	9.00a.m - 12.00 1.00pm - 4.00 (if viable)

Thursday 9.00a.m - 2.00
Friday 9.00a.m - 12.00

We would like to take this opportunity to thank all our current families for their ongoing support and look forward to welcoming new families to our fantastic facility.

Regards

Jean & Janet

Serving the North Bellarine Peninsula

PO Box 80, Drysdale 3222

Tel: (03) 5253 1960

Fax: (03) 5253 3050

Email: office@springdale.org.au

Ron Sudden directs "Music Hall Memories"

With the recent success of their last musical production "NOSTALGIA" behind them, the Queenscliff Lighthouse Theatre are turning their minds to their next production, and have commissioned local Geelong musical identities Ron and Maureen Sudden to direct a new musical called "Music Hall Memories".

To be held in Queenscliff later in the year, the production will feature music and comedy from the 1910s to the 1940s, including the two World Wars: music and comedy made famous by artists like Vera Lynn, Noel Coward,

Gracie Fields, Flanagan & Allen, and Stanley Holloway to name a few. A company spokesman said that the production will be a real nostalgic trip down memory lane.

As a prelude to the show, and to brief aspiring cast members, the company will be conducting an Information Day on Sunday 22 January from 2.00pm at the Queenscliff Senior Citizens' Hall, Symonds Street. All aspiring actors, comedians, and music - lovers generally who wish to take part in the production should attend the Information Day. Ron and Maureen Sudden will

outline their Directors' concept for the production on that day.

Ron has said that he expects to assemble a cast of about 30. There will be scope for solo, duet, and chorus singing, comedy acting and plenty of good old fashioned fun.

Open auditions will be held on Sunday 5 February and Monday 6 February at the Senior Citizens' Hall, Queenscliff.

"Music Hall Memories" promises to be another great production by the local Queenscliff company.

Road Trauma Support Team Victoria

The Road Trauma Support Team Victoria (RTSTV) now has a Geelong office at level 2 Kitchener House the Geelong Hospital Ryrie St. The RTSTV is a not for profit organization offering specialist support, counselling, information & referral to individuals & groups affected by road trauma. Some of the services provided include Training and professional development relating to trauma, loss and grief. Support groups for the bereaved, drivers & carers of people with an Acquired brain injury due to road trauma. Client support workers can be available to be matched with individuals who require additional support.

NEEDLE SYRINGE PROGRAM

Are you using drugs?
If so, then protect yourself from HIV and Hepatitis C.

Obtain clean fits from the Drysdale Community Health Service
21 Palmerston Street, Drysdale.

A CONFIDENTIAL service.
No questions asked.

ALINGA

LANDSCAPE DESIGN

Plan your garden to make it part of your home!

- * On site garden consultations
- * Expert advice in plant selection
- * Computer generated plans and images of your new garden!

Neil Muhlhan

Ph: 03 5253 1299 email: alingadesign@bigpond.com

Dick's Do It All

Carpenter & Joiner
For all your carpentry

Renovations, Repairs,
New Kitchens, Bathrooms,
Pergolas, Decking

Ph: 5251 5400 Fax: 5251 5411
Mobile: 0407 125 389
7 Mortimer Street, Drysdale

SpringDale Special Interest Groups

SpringDale offers a variety of special interest groups. Most attract a small, regular following, and would welcome new members. Two in the process of evolving from a previous incarnation are described below.

Computer Users Help Group

Meets in the Computer Room, 4-5:30 pm the 2nd Tuesday of each month, commencing 14 February

This group has been operating for a couple of years. It commenced with a mixed group of experienced and inexperienced users. Questions and discussion ranged over both hardware and software issues and encompassed the interests of both novice to expert users. After some months the emphasis changed to issues associated with photo and video editing.

In 2006 we are changing the emphasis again to reflect the apparent area of greatest need — help for those who are closer to the entry level than the expert level. Where possible, meetings will include

a short teaching session, beginning in February with Mail Merge. Come along if you: have a question(s) to ask that are likely to be of interest to other users; if you would like to hear such questions and the answers; if you have experience that would enable you to answer the questions of others; or if you feel you have something additional to offer.

As stated above, this group is aimed at the beginner to intermediate level user. If you are an advanced user and would be interested in a group oriented towards intermediate to advanced users, please email coordinator@springdale.org.au.

Travel — Have You Experienced ...

Meets in the Recreation Room 6-8 pm the 3rd Wednesday of each month, commencing 15 February

The Arm Chair Travel class has evolved into a new group, Travel — Have You Experienced ... This group aims to bring in speakers who have a wide variety of travel experiences. After each

presentation there will be an opportunity to mingle, to talk personally with the speaker(s) and to have a meal. Those attending are asked to bring a contribution to the meal if possible (but don't stay away if you can't manage that). Suggestions are for a casserole, salad or dessert, and your choice of drink. Harvey World Travel will send a representative or provide brochures with specific travel information for those keen to have the same experience.

The destination for the first meeting of this group will be Antarctica. The presentation of photos of Antarctica and of the Atacama Desert, accompanied by rhyming verse commentary, will set a very high standard for subsequent speakers to follow. The second meeting on 15 March is on Caravanning Around Australia. Subsequent sessions are planned for Trekking in China and Tibet, Time-Sharing in Spain and Portugal, African Wildlife Reserves, Backpacking Around the World, The Great Victorian Bike Ride and India.

CLIFTON SPRINGS PRIMARY SCHOOL

is once again holding a Drive-In Movie Night.

The movie to be shown will be CHICKEN LITTLE on Saturday 4th March 2006
gates open 7.00 pm movie screens at dusk. Cost is \$20 per car

Food, Snacks and Drinks available

Tickets on sale at the school from 31st January.

For more enquiries phone the school on 5251 3581 (after 31st January).



Drysdale Motors

FOR ALL AUTOMOTIVE
TUNING AND SERVICING

Specialising in
LPG DYNO TUNING

Have your LPG vehicle Tuned on a "rolling road". If your car runs on LPG And hasn't been dyno tuned Then it hasn't been tuned.

- Roadworthy Testing
- Fuel Injector Cleaning
- Air Conditioner Servicing
- LPG Conversions
- New Car Servicing

44 Murradoc Rd, Drysdale, 3222.
PHONE: (03) 5253 1033.

Your kinda loan for your kinda home.

At Bendigo Bank we understand that buying a home is a big step. That's why we offer a wide variety of home loans that provide a great rate whether fixed or variable plus extra benefits. We make sure you end up with the right loan for your home.

For more information please call into your nearest branch at 44 Newcombe Street, Portarlington, or phone 5259 3266.

Bellarine Peninsula
Community Bank Branch **Bendigo Bank**

Subject to terms and conditions. Fees and charges apply. All loans are subject to the bank's normal lending criteria. www.bendigobank.com.au Bendigo Bank Limited, Fountain Court, Bendigo, Vic. 3550. ABN 11068049178 AFSL 237879 (S4754a) (15/09/03)

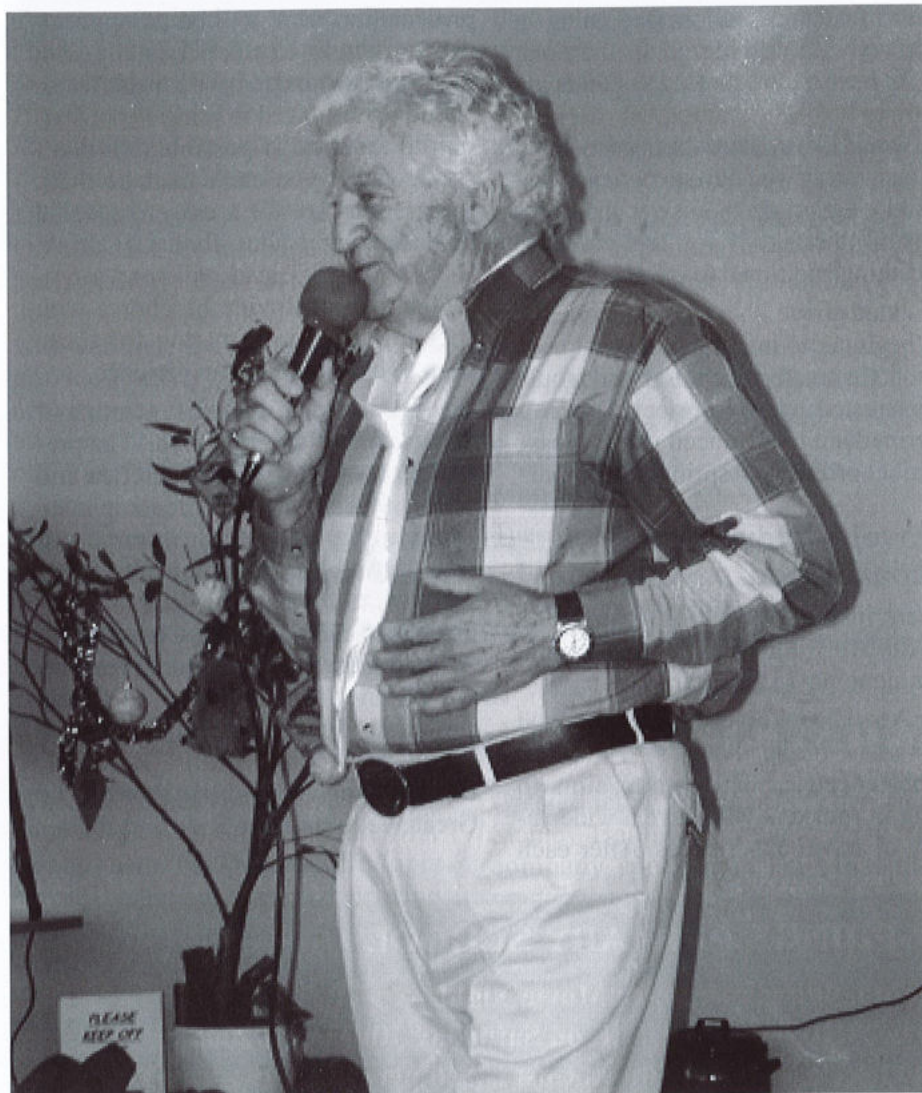
FOOT HEALTH CARE FOR ALL AGES



**Michael A. Nicol
Sue Partridge**

General Consultations
Diabetics and High Risk
Orthotic Therapy
Nail Surgery
Veterans' Affairs
TAC and Work Cover

DRYSDALE
5251 2958
27-29 High St. Drysdale



A Happy New Year to all members and readers.

This year has been the hottest on record and it is beginning to show with the land turned brown, the flowers wilting, and the Mosquito's waiting to get you when you step out doors.

The garden is very important for many of us still able to do a bit, it gives us exercise and some degree of creativity which I always feel is very important to me.

The members still enjoy attending the meetings, although the numbers have been reduced due to retiring to live with relatives, moving into a residential

home, or passing away.

We have two new members to be inducted at the next meeting, so it seems two leave and two join. We are an aging club and with the best will in the world, members cannot participate in the clubs activities.

I hope that the enthusiasm of some rubs off on to others.

December is a very busy time, but we still had time to enjoy our Christmas Luncheon at the Springs on our usual meeting day. The staff at the Springs looked after us very well, and we had lovely food all piping hot with all the trimmings.

Christmas Luncheon at the Springs just makes our day for all those members who live alone and wish to have some company and fun from the entertainment, and kissing Santa who is usually a members husband.

The Entertainment provided this year was different, Frank Kennedy a well known performer among the fraternity of Square Dance Callers. Beginning his career as a caller with the formation in the late seventies of the Westgate Dancers of Altona North which has run continuously since that time. In retirement he still performs and guest calls at many S.D. functions throughout Australia. During 1993 he took a year to travel around Australia with his wife Joan and a group of friends and this was the focus of his entertainment at our Christmas function, singing songs, reading his own poetry and relating anecdotes of his trip. It was a real fun day, and with a member singing a couple of songs, followed by another reading a funny version of the twelve days of Christmas.

The theme was a bush Christmas, so we had a decorated tree, and a camp fire setting. The President played the role of Mrs Pomplechook the Sheep Station keeper and was suitably dressed for the occasion in a big white frilly hat, long skirt and large white apron.

The Committee provided the surprise gifts from Santa's bag .

Our Speaker for January will be Tehree Gordon from the Jirralinga Wildlife Sanctuary.

The February Event for members is to attend the Point Richard Fellowship evening on Wednesday February 22nd. Last year was enjoyed by all.

The time has come to form a new committee for 2006, so members are being asked to consider it.

Yours in friendship.

Iris Liz Tolton.

FRANK BURGE CARS



KEITH PURCELL

Ph: 5222 1606
Fax: 5221 8608
Mobile: 0418 554 011

172 Fyans Street, South Geelong 3220

Uniting Care

CONCERN VILLAGE OP-SHOP

Shop 4 Village Walk
19 Springs Road
Drysdale

Phone: 5251 3640.

We value your custom.
Donations of clean goods always welcome.

MATILDA'S GIFTS

OPEN 6 DAYS
(Closed Tuesday)

- Dining
- Study
- Bedroom
- Entertainment

Huge collection of furniture and homewares, cane-ware, nautical & unique giftware.

Floor stock or made to measure.

'Country atmosphere with old fashioned service'

16 Collins Street DRYSDALE (Next to Hotel)
Phone / Fax: (03) 5253 1516

Travel Talk by Robyn McIntyre

Go on a holiday to the Top End and enjoy Australia's most unique capital city, the stepping stone to the wilderness areas of the Northern Territory as I just did recently. Darwin offers a relaxed laidback tropical lifestyle with a multicultural twist. Litchfield National Park has some of the most spectacular gorges, brilliant waterfalls, plunge pools and amazing termite mounds and was one of the many places we visited. Florence Falls was one of my favourites. Believe me after you have walked down the 150 steps it is well worth the swim in the most beautiful surroundings I have ever swam in. Some of the other must see sights & things to do from Darwin are the

Jumping Crocodiles, Darwin's National Museum and if time permits take a quick flight to Bathurst Island and visit the beautiful Tiwi people. Treat yourself to a sunset cruise on the "Alfred Nobel". Sit back and enjoy the delicious seafood cooked up by the crew whilst watching the magnificent colours of Darwin's sunset.

Now off to the renowned Broome, once the pearling capital of the world. Broome is a unique and exotic town with a romantic and often flamboyant history. Surrounded by the sparkling turquoise waters of Cable Beach, with rocky red cliffs and endless white sands. Broome's stunning national beauty and

relaxed tropical feel will capture your imagination as it did mine.

We visited Willie Creek pearling farm and learnt a lot about cultured pearls, which made the purchase for some a lot easier. We explored the west coast and traveled up to Cape Leveque via Beagle Bay. Staying at Cable Beach Resort and unwinding whilst sipping a cool drink at the sunset bar, watching the parade of camels go by in the brilliant colours of the sunset was like a dream. If it is contrast of colours and stunning scenery you desire then don't miss out on visiting Darwin, Broome and the Kimberley.



MORE FANTASTIC HOLIDAY SPECIALS FROM HARVEY WORLD TRAVEL DRYSDALE

TURKEY & THE GREEK ISLANDS

27 day fully escorted tour ex Drysdale departing 24 August 2006

Join Avril on an extensive tour of Turkey including Istanbul, Galipoli and Cappadocia, with a relaxed Greek island hop from Marmaris to Athens taking in Rhodes, Crete, Santorini and Mykonos.

\$7799 per person twin share

**Plus airline taxes*

Harvey World Travel Drysdale

6 High Street, Drysdale Vic 3222

Phone (03) **5251 1125** Fax (03) 5251 1126

Email: drysdale@harveyworld.com.au



HARVEY
world travel

The Travel Professionals

CONCEPT CAMPERS

Manufacturers and repairers of Annexes,
Awnings, Tonneaus, Tarps, Horse Rugs,
Boat Covers Custom Built Camper Trailers
Caravan and Boat Storage
Discount for senior citizens

Phone (03) 5253 2569
61-63 Murradoc Rd. Drysdale.

Blue Dragonfly Glass

For all your custom made
Leadlight and Mosaics
by appointment only
Contact Jenny on
Ph: 5251 1017 - Drysdale

For your free quotes - All enquiries welcome

Just Vintage

Gifts and
Collectables

Hours: Fri - Mon 10am-2pm
5 Mortimer Street, Drysdale
5251 3081

Bellarine Peninsula Railway - Drysdale

The B.P.R has enjoyed a very busy summer holiday season with the steam train service groaning under the weight of hundreds of passengers each day. Apart from a few fire ban days when diesel power was used, steam ruled the rails between Drysdale & Queenscliff.

Some highlights of summer were - our inaugural 'Murder mystery' train which was a big hit. We also ran several evening dinner trains & 'The Blues Train' rocked along the line on very balmy evenings.

2005 was a great year of achievement with the main highlight being the successful launching of the year round mid week 'Seaside Explorer' service. Another big plus was the recruitment of local volunteers Di & Don Turner, Gloria Ostler, Maureen Pova, Roy Pitchford, Geoff Treyvaud

& John Buckle. We also were grateful to Lynn O'Brien of Portarlington who kindly helped out at a critical period. Thanks Lynn!

Thanks again to all the local people & businesses who have supported us in many ways. These include Springdale, City of Greater Geelong, Geelong Crane Trucks, EDI Rail, VicTrack, Australia Post, V/Line Passenger, Port mowers, Mortimer Petroleum, Drysdale Village Hardware, Bellarine Secondary College, Farhams Plumbing & Murray Bird Grass slashing.

2006 should see the BPR further integrated into the Bellarine community. Some great plans are being worked on by our dedicated people and we hope that by year end several more strings will be added to our bow. If you have never ridden the trains or perhaps haven't for a long time - come on

down, we know you'll enjoy the day! Remember our services run EVERY Sunday, Tuesday & Thursday & most Public Holidays.

On Sundays & during public & school holidays a STEAM service departs Drysdale at 12.15pm & 3.45pm.

On Tuesday & Thursdays OUTSIDE of school holidays the 'Seaside Explorer' departs Drysdale at 11.30am & 3.30pm.

And with our fares starting at just \$4 one way for Pensioners or Children, could you afford not to ride with us?

Until next month, Take Care

Paul & Kate

Drysdale Historic Railway Station

24 hour Info Line 5251 3725

www.bpr.org.au



Picture- The 'Seaside Explorer' - Tasmanian Railmotor DP29 stands at Drysdale on a sunny afternoon. DP29 was built in 1949 & ran the very last passenger service out of Hobart station prior to its demolition in 1978.

BONE MARROW RECYCLE SHOP

High St. Drysdale

Donations of good clothing and brick-a-brac needed.

All proceeds from our shop go to help those with Leukaemia

BELLARINE AUTO SERVICES

Quality Mechanical Repairs
Tuning - Servicing
LPG Conversion - EFI
Tyres - Batteries - RWC
Licensed Vehicle Testers

Mortimer St. Drysdale
Proprietor: J. Pamplin

Ph. 5253 1644

The SpringDale Messenger

Large format Messenger now available at the SpringDale Neighbourhood Centre. Just ask at reception

I've seen the Bunyip - Have you ?

Over the holidays the Bunyip was seen in and around Drysdale - did you get to see it ?

The Bunyip is warming up for the next Bunyip Festival which will be held on Saturday 1st April 2006 10am - 3pm. This year its being held at Clifton Springs Primary School and our theme, suggested by Sam Morrissee a student at Drysdale Primary school, is "The Bunyip Plays Tricks in 2006". Another great theme for us all to work towards.

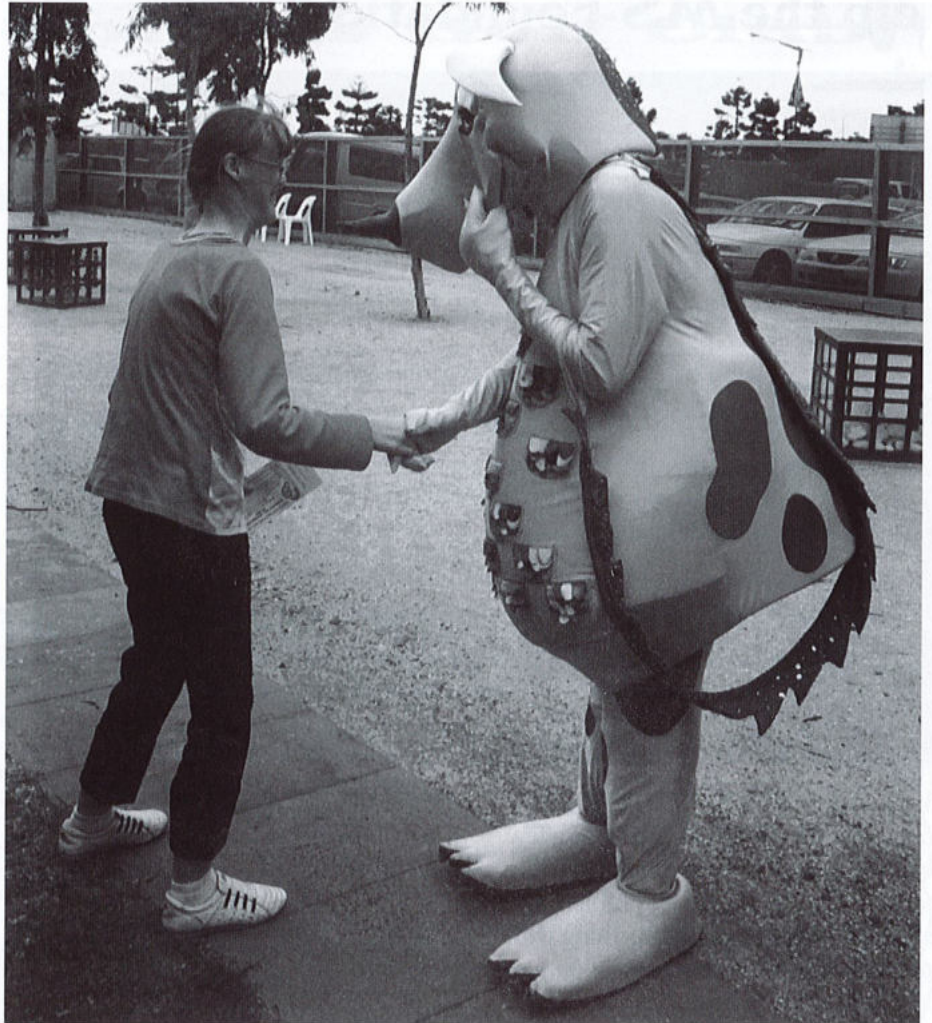
We are currently taking bookings for our Market sites inside and out - we are also trying to outsource the food stalls this year - so if you'd like to book a site or talk about setting up a food stall for the day - it could be run by a business or run by a community group - please contact Anne Brackley for more details.

We will have our usual great auction in the morning and we are planning to have a battle of the bands in the afternoon, this year.

I understand there maybe some other Bunyips visiting us to help our Bunyip with the playing tricks theme !!!

Hope to see you there - I'll be one of the team in green

Michelle Davis PR Co-ordinator Bunyip Festival 2006



From the garden gate

Watering! The time it takes in summer, is balanced by the time spent in winter cleaning up after wood fires in the house.

It is not really advisable to water the garden in the evenings, especially roses, which are liable to contract black spot. However, with the water-restrictions in force now, our only alternative is to get up early in the morning and do the watering. As often advised, mulching will help greatly to cut down on the water required. A wetting agent helps too.

What to do now - begin cutting back finished hydrangeas, watch for mildew on roses and grapes, turn over the compost and keep it moist, prune fruit trees immediately the crop as been harvested.

What to PLANT and SOW now

FLOWERS: ageratum, alyssum, calendula, lupin, nasturtium, stocks and wallflower.

VEGETABLES: celery, garlic (cloves), globe artichoke, kale, leek,

squash and silver beet.

CliftonSprings/Drysdale Garden Club commences on Monday, February 20th. at 7.30 pm in the Uniting Church Hall, Drysdale. All Welcome.

Enquiries. Wendy 5250 5545

Robyn 5253 1009

Happy Gardening !

The *Life*line Shop

Good quality clothing & bric-a-brac.
Donations of clothing & bric-a-brac
always welcome.

"Village Walk"

Shops 9 & 10, 21

Clifton Springs Rd. Drysdale.

Ph: 5253 2168



DRYSDALE
COMMUNITY CHURCH

276-290 Jetty Road, Drysdale.
Phone: 5253 2241

We invite you to join us for
SUNDAY SERVICES
9.00 a.m.
& 10.45 a.m.

Great worship, friendly atmosphere,
and a message relevant to today.
Tea & Coffee served after each service.

Kids Church and Toddler Church operates
during the 10.45 a.m. Service.

Delivering PC Solutions

We come to you!

COMPUTER SALES & REPAIRS

BROADBAND HELP, VIRUS REMOVAL, UPGRADES,
CUSTOM BUILT PC'S, GENERAL PC MAINTENANCE
CALL STEVE AT **DPGS**, BELLARINE PENINSULA

Ph: 03 5253 2558

Mob: 0405 523 606

Drysdale Guides are collecting records and cds to help the MS Foundation



Guides helping girls and young women grow into confident, self respecting, responsible community members.

Drysdale Guides have always had a reputation for getting things done and we have always taken our inspiration from one of our guide leaders, Eva Deeath, who passed away in December 2005. Eva lived the guide promise and expected everyone to do their best. Eva shared her love of music with everyone near and far. Many of Eva's guides are still giving to our community and beyond.

We wish everyone a happy healthy new year and look forward to welcoming new girls for a visit early in February. We meet on a Thursday night. Girls 5years old to 10 years old meet from 4pm – 5.30pm and 11years old to 18 years old meet from 6pm – 8pm. We all meet at SpringDale Neighbourhood Centre. Please ring Anne Brackley at SpringDale for details 52531960.

Thankyou to the people who have already donated to this collection – we have a few boxes full already and promises of a few more but if you have a space problem and have been wanting to do something with your old records – here's the solution – let them help other people.

Please ring Anne Brackley at SpringDale to arrange collection or drop them off to SpringDale. The records are needed by the start of March so they can be sorted and collated for an auction in June.

Drysdale Guides try to help many organizations all through the year – this is just one of our projects. Our girls develop leadership skills and are encouraged to “just have a go” in a very supportive environment. We finished off the year with a water activities day organized in Geelong – we canoed, sailed and had plenty of fun on the beach.

Drysdale Guides cater for girls 5 to 18

years old and are always in need of adults to help us carry out the programme either in an on-going way or for single meetings. Our mission statement is Drysdale



BELLARINE FENCING Co

We do
Picket & Paling,
Fences & Gates.

Phone: Andrew & Gayle Baylis
on 5251 3090 or 0417 544 887

Salvation Army Family Stores

Mortimer St. Drysdale

Ph. 5251 2475

Plenty of Bargains

The Place to Shop

Come and see us We are here to Help You

DRYSDALE CARPET COURT

CARPET - VINYL
CERAMIC TILES
FLOATING WOOD
LAMINATE FLOORS

Proprietor: Neil Petrie
Phone: 5253 1855 Mobile: 0419 519 030
63 Murradoc Road, Drysdale.

Clifton Springs Golf Club

Play By The Bay

Golfing Memberships

now available

only \$245

Golfing membership up until 30/06/2006

AND NO JOINING FEE

Green Fee Players Welcome

\$22 for 18 holes

Magnificent couch fairways

Bookings 52531488

TRY OUR FABULOUS LUNCHES
PRICES COMMENCE FROM \$6.50
(Monday to Friday only)

Courtesy Bus
operating every
Friday to Saturday
nights



Sunday to Thursday Evening

\$5.50 Meal Deal

Buy one main meal off our regular menu and
receive another

of equal or less value for only \$5.50
on presentation of this coupon.

(not valid Public Holidays and Long Weekends)

VALID until February 28th 2006

Conditions apply

SPIN and WIN

PROMOTION

4 draws every Friday night

(Applicable to bistro dinners only)

SUPER FRIDAY NIGHTS

Pots for glasses prices

Raffles, Raffles, Raffles

Mega Members Draw

Free Live Entertainment

Fantastic Views

Dinner 6.00p.m. - 8.30p.m.

Phone -52513391-

Drysdale Senior Citizens

Well once again all the excitement is over and now the start of 2006. We would like to wish everyone a very Happy New Year and plenty of good health. We have not a lot planned yet for this year on Monday 6th February we have Bingo, eyes down at 1.15pm, hope to see you all back again, everyone is welcome.

Monday 13th February we have a half yearly meeting starting at 1.00pm, we would like as many members as

possible to attend, the meeting will be followed by indoor bowls cards and snooker.

We have an apology to make, in the December edition we stated that Danny Blumm fashions were coming on Tuesday February 14th at 1.30, we have had to cancel them until a further notice, but to make up for the disappointment we are having Cliché Clothing Co. in March, further details to follow.

We hope to see you all back at the club don't worry about the weather our club is nice and cool, come up and just watch. Best wishes to our sick members, hope to see you back soon.

President: Esther Lornie

Secretary: Mary Hose.

The Seniors Guide - September 2005

**Issued by Stewart
McArthur M.P.**

Government Whip

Member for Corangamite

Observation from a reader.

I recently had some time to fill in whilst visiting the Springdale Neighbourhood Centre. I looked at some of the literature on their display boards. "The Seniors Guide" attracted my attention, so I started to flick through its pages and was pleasantly surprised by the information it contained, up-to-date and relevant to today's seniors. It is a typical government document with all benefits stated a number of times.

However, if you are looking for a regulation concerning a particular

benefit or subject, all relevant material is contained under that heading. The table of contents is very clear and well defined and I found it very informative. It is divided into eight sections, each section is divided into a number of sub-headings. The publication covers such items as Support for Seniors, Financial Benefits, Self-funded Retirees, Mature Age Employment, Health Benefits, Support for Carers, Residential Aged Care and Active Seniors.

Did you know for instance, that a person receiving a full pension and having income earning assets, which return more than the deeming rates (3% to \$37,500 single and to \$62,000 couple and 5% on assets over these amounts) are only rated at the deeming rates, and any earnings after this rate are not counted

as income for pension purposes.

Another point of interest is the regulation regarding entering residential aged care. Where you enter into residential care and pay accommodation bonds by periodic payments earned from rents paid by renting out your home, these rents and the value of your home are not counted as investments or income.

These were just two of the items that were news to me. Many other interesting details in the 77 page publication. It is available to be perused at the Springdale Neighbourhood Centre, or they can obtain a copy for you if you would like to have one to take home.

Chris Reymers.



SCC
c h a r t e r e d a c c o u n t a n t s
s c o t t c l e a r y c o u m a n s



▼ **Tax Returns**
▼ **BAS Returns**

▼ **Small Business Advice**
▼ **Investment Advice**

Belmont office - 5244 1622
1st FLOOR, 35-37 THOMSON ST, BELMONT

Geelong office - 5222 1048
103 YARRA ST, GEELONG

Drysdale office - CNR. OF SPRINGS RD. & HIGH ST, DRYSDALE
www.scc.net.au



Quality Butcher
PETER HOMMELHOFF
HOMMY'S
QUALITY MEATS
For something new and different
16 High Street, Drysdale 3222.
Phone: 5251 2270



Lynette's
User-Friendly
Computers
**Personalised
Tuition & Training**
Ph: 5259-3963
Serving the Bellarine Peninsula

Term 1 Classes and Groups

The course guide was delivered to letterboxes just before Christmas. If you didn't receive your copy, additional copies are available from the SpringDale Neighbourhood Centre (17-21 High St., 5253 1960) and from the Neighbourhood Watch notice board near the exit from the supermarket to the main car park.

The list below provides an indication only of the classes and groups running this term at SpringDale. The number of sessions for a class is shown in brackets (n). Groups are indicated by (group). Contact SpringDale for details of dates/times/fees/content.

Please note that significant discounts are available for those enrolling in a second class within 12 months of the first class.

HEALTH AND WELLBEING

Tai Chi.

(beginners and advanced classes).

Friday mornings (6).

Yoga.

Monday mornings (5) or Thursday evenings (6).

First Aid

Level 2. Monday evenings (6) or Saturday whole day (2).

First Aid CPR. - 1st 3 hours of First Aid — Level 2 (1).

First Aid - Level 1. 1st half of First Aid Level 2 (1).

Meditation.

Tuesday evenings (group).

Strength Training for Over 50s.

Tuesday evenings (non-SpringDale).

GENERAL INTEREST AND SKILLS

Acting for the Camera.

Tuesday evenings (6).

French

conversational (beginners, intermediate and advanced sessions). Saturday mornings (6).

English Grammar.

Tuesday mornings (3).

MAGGIE GOVE N.D.

Bowen Therapist & Naturopath

Member of A.N.T.A.

Drysdale: Clinic 03-5251 1188
Ah 03-5253 2230

(Rear of Elegant Profile)

Gardening

Planning a New Garden. Wednesday mornings (3).

Mobile Phones

How to do More Than Just Turn One On. Monday mornings (3).

Personalities Explained.

Monday mornings (2).

Plan a Home Renovation.

Wednesday evenings (7).

Scriptwriting.

Tuesday mornings (8).

Thinking about buying a Digital Camera?

Monday morning (1).

SpringDale French Club.

Friday evenings, fortnightly (group).

Travel

Have You Experienced...?

3rd Wednesday evenings (group).

SpringDale Chess Club.

Wednesday afternoons (group).

SpringDale Jigsaw Club.

1st Thursday mornings (group).

Naturopath

Lisa Taylor N.D. (A.N.T.A.)

Drysdale Community Health Centre
21 Palmerston street

Monday & Thursday
appointments ph: 5251 2291 AH: 5251 2544

Also available at Carmoor Clinic, 343 Moorabool St.

Wednesday & Friday: Ph 5223 2616

Specialising in women's and children's health using
Herbal, Homoeopathic and Soft Tissue Therapies.

SpringDale Mah-jong Club.

Wednesday mornings (group).

SpringDale Scrabble Club.

Tuesday afternoons (group).

WINE, FOOD AND HOSPITALITY

Wine Appreciation.

Friday evenings (2).

Introduction to Hospitality.

Thursdays and Fridays (all day) (8).

Responsible Service of Alcohol.

Thursday morning (1).

Responsible Service of Gaming.

Friday morning (1).

Food Handling and Safety

(Apply basic food handling). Monday (1 full day).

Food Safety Supervisor.

Monday (1 full day).

Country Cooking.

Tuesday mornings or evenings (5).

Continued page 18

BELLARINE

VETERINARY PRACTICE
— ANIMAL HOSPITAL —

For all your pets needs

For an appointment

please phone

5253 1393

108 High St, Drysdale

Thai Cooking.

Wednesday evenings (2).

Vegetarian Cooking.

Monday evenings (3).

ARTS AND CRAFTS

Floral Art

(beginners and advanced classes). Thursday mornings (2). Expressions of interest for a Saturday morning class

Jewellery Making.

Saturday afternoon (1).

SpringDale Singers.

Tuesday afternoons (group).

Friendly Writers Group.

Monday evenings (fortnightly) (group).

Artists'

Feedback and Camaraderie Group
(a mentoring group). Call for expressions of interest.

Springers Quilting Group.

4th Thursday mornings (group).

Scrapbooking.

Last Wednesday evenings (group).

Queenscliff & District Woodworkers.

1st & 3rd Monday afternoons (non-SpringDale group).

COMPUTERS

Introduction to Computers

A. Thursday afternoons (8).

Introduction to Computers B.

Wednesday mornings (8).

Introduction to Computers C

(Microsoft Word). Thursday mornings (8).

Introduction to Computers D

(Microsoft Publisher). Friday mornings (8).

Microsoft Windows XP.

Tuesday mornings (8).

Computer Performance and Maintenance.

Wednesday afternoons (8).

Digital Photos and Movies.

Tuesday afternoons (8).

Digital Photos

Beginners. Tuesday afternoons (4).

Digital Photos

Advanced. Tuesday afternoons (4).

Email and Internet

Beginners and Beyond. Saturday mornings (8).

Desktop Publishing

(Microsoft Word). Tuesday evenings (8).

Microsoft Word, PowerPoint, Excel and Outlook (Microsoft Office).

Monday afternoons (8).

Getting Started with Microsoft PowerPoint.

Monday afternoons (3).

Introduction to Microsoft Excel.

Monday afternoons (3).

Setting up a Website.

Monday evenings (8).

PC User Help Group.

2nd Tuesday afternoons (group).

CHILDREN AND PARENTS

Music and Movement.

Wednesday mornings (8).

Bellarina Toy Library.

Saturday mornings (group).

Portarlington Toy Library.

Wednesday mornings (group).

SpringDale Parents' Club.

Tuesday afternoons (group).

SpringDale Home Schoolers Club.

1st Monday afternoon (group).

SpringDale Jigsaw Club.

1st Thursday mornings (group).

Bellarine Bin Hire

Drysdale - Ocean Grove

1.5, 2.5 & 4m³ bins

FREE CALL

1800 104 313 | 0419 543 283

Servicing the Bellarine Peninsula

DON'T LET YOUR COMPUTER BEAT YOU

We can help you:

Improve your productivity;
Clean up and/or prevent scumware;
Improve computer performance;
Edit your digital photos.



Have a private lesson — your house or ours

Contact us for assistance with any computing concerns or queries you may have

Phone Joy or Barrie on 5251 2115
CLANCIE Specialised Services
www.CLANCIE.here.ws



MORTIMER PETROLEUM

PETROL STATION & CONVENIENCE STORE

97 High Street Drysdale Phone 5251 2603
Petrol, Autogas Bait & Fishing Supplies

CAR WASH

Open 6.00am-10.00pm

SPORTS REPORT

Register now for soccer in 2006

Interest in soccer continues to grow on the Bellarine Peninsula. The Bayside Sharks Soccer Club which is based in St. Leonards had a most successful year in 2005 with over 50 children being exposed through club activities to soccer. The Bayside Sharks Soccer Club is a family orientated club with the emphasis on using soccer as the medium to actively involve its players in a social atmosphere of shared enjoyment. The club recently organized a junior coaching course with Football Federation Victoria and

now has 12 qualified and enthusiastic junior coaches. 2006 promises to be another step forward for our local club with men's, Women's and Junior teams being entered into the W.V.S.A season. Each team will consist of 15 players. Already some teams are full. Children who are over 8 years of age on the first of January are eligible to play. Costs are approximately \$5.00 per week for Juniors and \$10.00 per week Seniors (based on 19 weeks of soccer). This fee is paid prior to play and incorporates registration, insurance, team

equipment, refs. Fees and ground hire. Currently junior teams play Sunday morning, Senior Men's teams play Sunday afternoon and Senior Women's teams play Saturday afternoon. All interested players both young and old are encouraged to contact Murray or Donna to register your intentions to play as soon as possible as teams will be entered early in the New Year.

You can contact Murray and Donna for further information on 52572106



DRYSDALE
FAMILY SUPPORT

Phone: 5253 2099

- *Counselling Centre
- *Life Skills Seminars
- *Foodbank Plus
- *Second Chance Clothing



18-20 HIGH ST. DRYSDALE.
OPEN 7 DAYS A WEEK
11am - 4pm

All Public Holidays except: Good Friday, Anzac day,
Christmas day, Boxing day and New Years day.
New Members always Welcome
Ph: 5251 1605

DRYSDALE
REMOVALS
& STORAGE

Local, Country,
N.S.W. & S.A.

PH. (03) 5251 3674

You'll be

SOLD

on Allpoints @Guyett.

Allpoints@Guyett is your first step to successfully marketing and selling your property.

Our proven sales record speaks for itself. Whether you're selling or buying a property - residential or rural, we have the experienced staff with all the necessary local knowledge to gain you the best outcome.

AllpointsTM@Guyett

Ocean Grove
5255 1000

Barwon Heads
5254 3100

Drysdale
5251 2847

Leopold
5250 1533

