

The SpringDale Messenger

Your Free
Community
Newspaper

Compiled and published by the SpringDale Neighbourhood Centre Inc A002916V

Circulation 4,500

ABN 21 404 220 267

Vol 16 No. 7, August 2006

Changing of the Guard



The Drysdale Community would like acknowledge the “changing of the guard” at the Drysdale Fire Brigade. After 10 years “to the day” Des Connor has relinquished his title as Drysdale Fire Brigade Captain to Jeff Stewart. Des has given service to the CFA in excess of 40 years and has received numerous awards including a National Medal. Prior to becoming Captain in 1996 he held the position of 1st Lieutenant for 10 years from 1986 to 1996. Through his term as Captain, one of the most rewarding feats Des has accomplished for the Drysdale Community is the construction of the new Fire Station evolving from the “tin shed” to the model facility we now have. Des will continue to be an active member of the Brigade serving the Community.

The new Captain of the Fire Brigade, Jeff Stewart, has been a member of the brigade nearing 20 years and an officer for 8 years. Jeff is looking forward to continuing the brigade tradition as Captain providing an essential voluntary service to the Drysdale Community. Jeff, born and bred in Drysdale, whose passion for the town is shown through continued community involvement, includes being awarded a Life Membership to the Drysdale Football Club.

The Drysdale Fire Brigade and Community wish to thank Des Connor for his tireless effort and years of support in building the brigade into what it is today.



**DRYSDALE
VILLAGE
HARDWARE**
(03) 5251 3267

YOUR HANDY
HARDWARE
STORE

THE ARCADE
HIGH STREET
DRYSDALE, 3222.

Westpac

- OPEN SATURDAY
- HOME LOAN CENTRE
- GOOD TERM DEPOSIT RATES

CONTACT: WAYNE, LISA,
BEV, PAM OR MICHELLE
5251 1624

**SHOP 9, SUPERMARKET
COMPLEX, DRYSDALE**

The SpringDale Messenger

The SpringDale Messenger is compiled by the SpringDale Neighbourhood Centre Inc. A0024916V,
17-21 High St. Drysdale.

Postal: P.O. Box 80, Drysdale, 3222.

All editorial and initial advertising enquiries to SpringDale Neighbourhood Centre

Phone: 5253 1960

**Fax: 5253 3050 or email
messenger@springdale.org.au
www.springdale.org.au**

All contributors are asked to provide their articles on disc (Microsoft Word) or email it for ease of processing. Contributions are still accepted as written copy but need to be submitted in the week prior to our copy deadline.

Next Publication – Sept. 2006

Copy deadline:

7th August, 2006

Distribution:

25th August, 2006.

Views expressed in this newsletter are not necessarily the views of the Publisher, the SpringDale Neighbourhood Centre Inc.

Advertising:

To ensure publication in a specific issue, copy must be submitted prior to deadline.

This includes both new adverts and alterations to an existing advert.

Layout and Design of this issue by Pagination Design Services, Geelong. Contact at Pagination Design Services, Geelong is Anthony Zavaglia.

Max Simmons PhD (Flinders)
Health and Counselling Psychologist

- * Sleep difficulties
- * Persistent pain
- * Anxiety & depression
- * WorkCover and TAC injuries
- * Substance use
- * Life skills

27-29 High Street, Drysdale, Vic. 3222
Phone: (03) 5251 2958 Mobile: 0414 833 290
email: max.simmons@datafast.net.au

Community Calendar

SpringDale Community Calendar – a SpringDale Neighbourhood Centre initiative to support the whole community.

This calendar will enable you to quickly look up what is happening over the next couple of months (maybe longer) in our area. There will be a calendar for the next 12 months put on our website—accessible to all groups to help when planning events. If you would like to place an event on our calendar on the website and also in the next couple of issues of the SpringDale Messenger—then please email, write or ring the details of the event through to the SpringDale Office.

2006

Aug	3	SpringDale Messenger copy deadline
	5	The American Trilogy Tribute Show - Clifton Springs Golf Club
	7	Danni Blume Fashion Show at Drysdale Senior Citizens
	9	Bellarine Historical Society meeting at Old Court House Museum 7.30 pm
	21	Clifton Springs/Drysdale Garden Club monthly meeting at 7.30 pm
	25	Drysdale Ladies Day View Club Lunch Meeting at Clifton Springs Golf Club
	26	Clifton Springs Tennis Club Wine Tasting
	27	Portarlinton Market
Sept	1-8	Adult Learners Week
	4	SpringDale Messenger copy deadline
	16	Clifton Springs Tennis Club Bus Shopping Trip (Phone Alison on 52512543)
	17	Drysdale Community Crafts Spring Fair - 10 am to 4 pm at SpringDale Neighbourhood Centre
	17	Charity Golf Day at Clifton Springs Golf Club run by Lions Club of Portarlinton/Drysdale
	24	Portarlinton Market
Oct	2	SpringDale Messenger copy deadline
	21	Robbie Williams Tribute Show at Clifton Springs Golf Club

2007

Mar 17 Bunyip Festival at Drysdale PS

.....There's room for your club's information night, membership drive day, special event to be listed here - please send the information to SpringDale for inclusion in this section.



The Drysdale...

COFFEE • LUNCH • DINNER

OPEN 7 DAYS

Lunch and dinner
Reservations: 5251 2301
Sports bar • TAB
• Kids Playground
• Alfresco beer garden

DRYSDALE HOTEL High Street, Drysdale.



Drysdale Physiotherapy & Sports Injury Clinic

- Spinal ■ sports ■ Manipulative ■
- Arthritis ■ Workcover ■ TAC ■ Vet Affairs ■
- Hydrotherapy ■ Exercise Rehabilitation ■

Peter Terry MAPA, MPAA
and associates

Ph. 5251 2958

27 - 29 High Street, PO Box 179, Drysdale 3222

NEWS FROM SPRINGDALE NEIGHBOURHOOD CENTRE

Dear Friends

Almost everyday a new suggestion is made at SpringDale and we try to do our best to turn ideas into reality. This month we've had a lady suggest a Canasta group. She answered an ad about playing Canasta, where she used to live and that's how she got started – now she would like to invite others to share her interest here.

We've had some men ask for very basic cookery sessions to help them survive in kitchens that their wives never let them into. I have encouraged a friend to help us in this endeavour and the sessions will start soon. Please register your interest in Canasta or very basic cooking sessions with SpringDale.

Tax Help has started again for people who meet the eligibility requirements. This year we have 3 volunteers helping on Mondays and Tuesdays. We thank Michael, Paul and Chris for their commitment to our community.

Our local businesses continue to support the SpringDale Messenger, which is almost 15 years old. It was unfortunate that last issue there was a mishap during printing and our last 2 pages weren't printed. I apologize to the Drysdale Football Club and to Stuart Craven who writes their articles, I apologize to Wendy Hebbard, who writes "From the Garden Gate" on behalf of the Clifton Springs Garden Club. Unfortunately the articles from these groups were only printed in our large print format copies and also on the website.

Our sincere thanks must go to Phil Cummings from Allpoints@Guyetts. Phil has supported the SpringDale Messenger from its inception – I was very disappointed not to see the Allpoints ad on the back page and also the Bellarine Autos ad didn't make it either. We are so very grateful to all our advertisers

and contributors. Without the advertisers we couldn't provide this magazine – without contributors there'd be nothing to provide. Thanks to everyone who helps bring it together each month.

Another part of our community support includes providing information for new residents. Part of this is the SpringDale Business and Services Information Directory. We are currently up to issue 3 and many people have said how useful and well used it is. We will print it annually at a cost of \$25 to each Business for a small listing, zero cost to community groups and not for profit organizations and zero cost to our annual advertisers in the SpringDale Messenger.

Our hope is to have every small business in the directory – but we can only do this if businesses help us to meet the printing and distribution costs. Please contact SpringDale if you would like to be included or for more information – also ask about our Business Network and if you join both at the same time you save money. We do hope to have every business included in this edition. Deadline is now end of August 2006 for delivery in September and to be available for the holiday makers over the Christmas Season.

We are also working on a Disability Action Plan for the Centre. We invite anyone interested in helping us to get Disability Action Plan correct to register your interest with our office and a meeting will be scheduled or you can have input via mail or email etc.

Two other things which also need your expressions of interest are

1. If we get a school holiday program running are you interested – in the past we have had requests? – now we are ready to set it up if there is interest.

2. Do you have any Nationally Accredited courses that you would like us to offer next year – or even the year after? We will continue to offer First Aid and Food Handling and Supervisor courses as we have for many years. It's the other types that are longer and need a largish number to run. This year we are hosting an Aged Care Certificate 3 course. We have 16 people attending and I believe its going well. Next year a Children's Services course / another Aged Care course or your suggestion?

I've been able to show some more people through our centre during the last month – if you haven't yet made it through the door – please pop in Monday – Friday 9.30am-3.30pm or please schedule another time to suit you and find out what we have to offer.

Please remember we are a "Not for Profit" organization but also a "Not for Loss" – if you book in for a course – we do require you to pay for it prior to the course. Please help us to continue to provide as many courses as we can, for reasonable prices.

Yours very sincerely

Anne Brackley on behalf of the whole SpringDale team.

SpringDale Facilities

Personal use of Computers

Internet Access

Photocopies

Faxing

Laminating

**SpringDale Messenger in
large format**

Room Hire

Tables and Chairs for hire

Crockery of hire

**Reasonable rates and cheaper
rates for members**

Need to go to court?

Come in for a *free* chat

RISTEVSKI

LAWYERS

1 High St., Drysdale
(old Post Office) Ph: 5251 3453

FRANK BURGE CARS



KEITH PURCELL

Ph: 5222 1606

Fax: 5221 8608

Mobile: 0418 554 011

172 Fyans Street, South Geelong 3220

Ladies Probus Club of Bellarine Inc Reg. no. A14696T

One of our long term members Norma Howell passed away last month. Norma was a ray of sunshine to everyone - the club will miss her and her never ending knitting projects. Attending her funeral service were family and friends including Probus representatives who were asked to form a guard of honour as the coffin was taken to the hearse.

The July meeting at the Springs was fun! Instead of a speaker we had an Old Time Musical theme with the com-

mittee providing the entertainment. Members were requested to come to the meeting in an old time outfit.

We have to plan ahead for the monthly speaker, so we took ourselves to the Native Plant Nursery on Portarlington-Geelong Road to meet Phillip Vaughan. Don Burke describes him as "one of Australia's best nurserymen". This fact is in no doubt. His garden is only recently set up having moved all his native plants from the Grampians to this locality. He

gave us a tour of his garden and plants explaining anything we wanted to know. He and his family were so helpful. We look forward to hearing him at the Club in October. It seems with water shortages looming, growing native plants may be the way to go.

Yours in friendship.

Iris Liz Tolton

Charity golf day players wanted

Once again the Lions Club of Portarlington/Drysdale will be holding a charity golf day at the Clifton Springs Golf Club on Sunday 17 September 2006.

Green fees, two course luncheon and ticket in 'main' raffle of the day is included in the price of \$35.00 per person.

Tee-off starting at 08.00hrs for an 'Ambrose' day of 18 holes with a free on-course sausage sizzle.

Proceeds raised always support our local schools and community organizations. This year, both the Boy Scouts and the Girl Guides in Portarlington and Drysdale will receive ALL profits

raised at this charity event.

REGISTER NOW: teams of 4 preferred.

Call Geoff Webster on 5251 2990 or Ray Meaney on 5259 1782

Happy Golfing!!!

Bellarine Historical Society

Celebrating 30 years.

The Bellarine Historical Society monthly meeting will be held at the Old Court House Museum, Drysdale on Wednesday 9th August at 7.30 pm. Guest Speaker: Ron Medson. Ron will

talk to us about the days of International Harvester and Hawkes Brothers in Geelong. If you have an interest in local history / family history etc. we would welcome your support. For further information contact on Lynette Willey (PO.Box 53 Drysdale 3222) or

email: willey@netspace.net.au

CURRENT DISPLAYS: Holden Brothers Circus display and Ocean Grove Terrace at the Museum, 1st SUNDAY of the Month (MAY-DECEMBER) 1.30 pm. - 4.30pm .

Drysdale Ladies Day View club

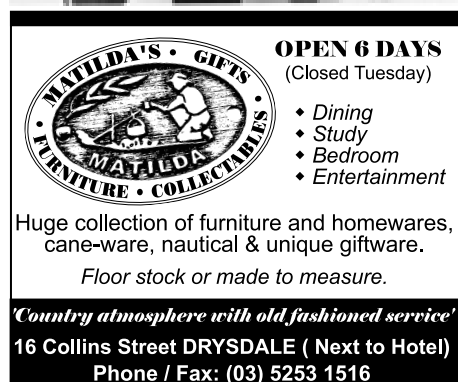
Our next lunch meeting is due on Friday 25 August, at the Clifton Springs Golf Club Function Room, at 10.30am. If you would like to join an active & entertaining club (part of a nation-wide network), meet interesting people, & help support The Smith Family's work in assisting disadvantaged school children with its Education For Life Program, - then come along! More info is available from Christine - 5251 1127



Weddings
Commitment Ceremonies and
Special Family Occasions

Local & professional Videography
and Post-production Services

0407 531 764



OPEN 6 DAYS
(Closed Tuesday)

- Dining
- Study
- Bedroom
- Entertainment

Huge collection of furniture and homewares,
cane-ware, nautical & unique giftware.

Floor stock or made to measure.

'Country atmosphere with old fashioned service'

16 Collins Street DRYSDALE (Next to Hotel)
Phone / Fax: (03) 5253 1516



SCENIC TOURS
The Ultimate Touring Experience

Canada & Alaska 2007

Earlybirds Save UP TO \$5000 PER COUPLE*

FREE UPGRADE	FREE UPGRADE	FREE UPGRADE	FREE UPGRADE
 GOLDFEAF CLASS* GUARANTEED UPGRADE	 PRIVATE VERANDAH* GUARANTEED UPGRADE	 LAKE VIEW ROOM* GUARANTEED UPGRADE	 VIEW ROOM* GUARANTEED UPGRADE

23 Day fully escorted tour departing 27 May 2007, \$10,545* ex Melbourne
+ airport taxes \$430* & port charges \$415*

\$10,000 in Travel Money prizes to be won
5 lucky passengers will each win \$2000 spending money from Travalex to spend whilst in Canada*

Join Scenic Tours on the ultimate touring experience of Canada & Alaska.

Call Harvey World Travel
Drysdale 5251 1125
Ocean Grove 5256 1888
Quote Code 2458 when booking

 **HARVEY**
world travel
The Travel Professionals*

* Conditions apply. Savings per couple twin share and based on earlybird and special season departures. For new bookings only. No further discounts apply. Earlybird Savings, upgrades on Rocky Mountaineer, view rooms and balcony cabins are available for limited seats on set departures. Book and deposit no later than 15 December 2006. Subject to availability. Airport taxes and port charges subject to change. Please note a surcharge may be imposed on credit card transactions. A service fee will be charged. Prize value is in AUD. To enter customers need to book and deposit a 2007 Scenic Tours Canada and Alaska trip at any Harvey World Travel shop in Australia by 15 December 2006. See www.harveyworld.com.au for full terms and conditions. Permit Number: 06/2179. Scenic Tours Pty Ltd ABN 85 002 715 602. Lic. No. 2TA 002 633.

Springdale Business Network a great springboard!!

Crosswords for Fun! is a new e-commerce business which offers crosswords and other puzzles for free. From its launch in March this year, its e-club membership stands at 130 and is growing on a daily basis.

Website owners Catherine and Alex Eagleson, who moved from Melbourne to the Bellarine in July 2005, are now active members of the Springdale Business Network. "We have attended the two breakfasts held since February, and it has already paid dividends", they say. Catherine who writes all the puzzles contributed a crossword to the last is-

sue of the Springdale Messenger. The result has been a request for a similar puzzle for the newsletter of one of the national yachting associations.

From 11 July, Catherine will be running a Crossword Club at the Springdale Centre on Tuesday afternoons from 1-3 p.m. If you love doing puzzles, why not come along and try them out. We'd love to see you there.

Crosswords for Fun!'s aim is to develop a crossword puzzling community by offering free puzzles. We are currently expanding the business by offering the

opportunity for businesses to advertise using the website. If you would be interested in promoting your business this way, please contact Crosswords for Fun! on 5259 1788. We invite you to visit the website at www.crosswords-forfun.com.au.

We would encourage all local businesses to become part of the Springdale Business Network, and to be represented at the next breakfast. It's a great way to be part of your local community.

From the garden gate

Do you like to be able to pick some fresh vegies for your evening meal, or fruit or a bunch of flowers to put in the house or to give away? So many people do, that real Estate Agents are finding that house-buyers now want a back yard. Many of them no longer want the instant garden, with gravel and a few grasses and no space around them. Customers remember the back gardens of their childhood when every home had a lemon tree, apricot or plum tree and maybe even a few chooks.

As gardeners, we love 'doing it' and it is also very good for our health. Not having a yard to relax in, means people don't have that way of releasing their stress and so their health

suffers. And where do modern children go to play? I even heard of a new home in a seaside suburb that has a rumpus room underneath the house - just like a dungeon! My mum used to say "Go outside and play. It is not raining. I will call you when tea is ready". How times have changed!

What you can do now

Finish pruning your roses. Spray fruit trees against codling moth, leaf curl etc. Prune lemon verbenas.

Prune camellias when finished flowering. Fertilise any new roses you have planted. Enjoy the scent of daphne.

PLANT - lettuce and cabbage for a

Spring harvest. Sow peas in to raised ridges. Start feeding citrus trees with blood and bone and well-rotted poultry manure. Plant asparagus, beans, radish, broad beans, onions, potatoes, swedes.

FLOWERS - cosmos, Californian poppy, petunia, lobelia, pansy.

MEETINGS. Clifton-Springs/Drysdale Garden club.

August Meeting Monday 21st 7.30 pm
Uniting Church Hall, High St. Drysdale. All Welcome. SPEAKER.

Enquiries: W. Hebbard - Pres.
Ph 5250 5545

R. Flett - Sec. Ph 5253 1009

BELLARINE FENCING Co

We do
Picket & Paling,
Fences & Gates.

Phone: Andrew & Gayle Baylis
on 5251 3090 or 0417 544 887

FIREWOOD

SPLIT RED GUM
DELIVERY ONLY;
BELLARINE PENINSULA
LOCALLY SUPPLIED
JUST WOOD

0400 572 861



**MORTIMER
PETROLEUM**

PETROL STATION & CONVENIENCE STORE

97 High Street Drysdale Phone 5251 2603
Petrol, Autogas Bait & Fishing Supplies

CAR WASH

Open 6.00am-10.00pm



Quality Butcher

PETER HOMMELHOFF

**HOMMY'S
QUALITY MEATS**

For something new and different

16 High Street, Drysdale 3222.
Phone: 5251 2270

Delivering PC Solutions
We come to you!

COMPUTER SALES & REPAIRS

BROADBAND HELP, VIRUS REMOVAL, UPGRADES,
CUSTOM BUILT PC'S, GENERAL PC MAINTENANCE
CALL STEVE AT **DPDS**, BELLARINE PENINSULA

**Ph: 03 5253 2558
Mob: 0405 523 606**

TAX RETURNS

Gerry Lilkendey, Reg Tax Agent, CPA

Mobile Service to your home
Standard-\$78, Concession-\$72,
2 Ret-\$140

Quick refunds, Quality Service
Appointments Day & Evening

Ph 5259 3704 or 0414 952 906

25 Spray Farm Lane, Bellarine, 3221

Are you living up or down?

It's often easy to allow the negative things that happen to us on a daily basis to drag us down to a level lower than where we really want to be living.

There is a passage in the Message translation of the Bible in Romans chapter 12 that reads, "So here's what I want you to do, God helping you. Take your everyday, ordinary life – your sleeping, eating, going-to-work, and walking-around life – and place it before God as an offering. Embracing what God does for you is the best thing you can do for Him. Don't become so well adjusted to your culture that you fit into it without even thinking. Instead, fix your attention on God. You'll be changed from the inside out. Readily

recognize what he wants from you, and quickly respond to it. Unlike the culture around you, always dragging you down to its level of immaturity, God brings the best out of you, develops well-formed maturity in you."

Rather than be continually shaped by the world around us, what could be more uplifting than to get our lives into the "God Zone"? One of the most spiritual things we can do is to live a Godly natural life; just doing the ordinary things we do every day with God in mind.

Every day we have the opportunity to swap the way we used to do things for the way that God wants us to do things. Jesus has given us the example and the teaching to help us. Every

situation in life is covered by His teaching and it is to help us to live up to a life that pleases God.

Each day we have the opportunity to stop and think about something we are doing and instead of letting our culture drag us down to its level of immaturity, we can let God bring out the best in us, and grow and develop into mature human beings.

In the Bible Jesus has given us advice on family, friends, business, parents, children, attitudes, reactions and everything else we can think of – they are all covered.

Try it and see the difference it makes.

Jake Hogendoorn

Drysdale Community Church

Spring fair at SpringDale

DRYSDALE COMMUNITY CRAFTS is holding a Spring Fair at the SpringDale Centre, High St. Drysdale on Sunday 17th September from 10am to 4pm with a Spring theme- Lucky Dips, Face Painting, Fairy Floss, Devonshire Tea, Sausage Sizzle and a raffle with the proceeds going to Cottage by the Sea. There will be stalls selling beautiful hand made goods with something to suit everyone.

Drysdale Community Crafts celebrates

its 24th birthday this year. The shop first opened for business in October 1982. Members participate in the running of the shop by supplying their handcrafted goods, attending the Clubs monthly meetings and by giving their time to work in the shop according to a roster. Our workers make quality and unique goods ranging from childrens wear and toys, knitted goods, Patchwork, Embroidered Silk Lingerie bags, Ceramics, Folk Art,

Gift Cards, Souvenirs, Jewellery and much more. There is also a layby and made-to-order service. All profits go to local charities. The shop is situated in the Historic Free Library, High St. Drysdale and is open every day from 11am to 4pm.

Membership is not restricted to local residents and new members are always welcome.

Shop Phone No. 5251 1605.



The Life Style promise
Simpler Caring Affordable

Life Style Funeral Company provides a simpler, caring approach with the highest level of support and understanding yet without all the extra costs. Compare the quality and value of our funeral services.

New location now open serving the Eastern Suburbs, Bellarine Peninsula and surrounds.
Call us on 5248 6500

2a Bellarine Hwy, East Geelong (Cnr Boundary Rd & Bellarine Hwy)
also at 22a Melbourne Rd, Norlane

Life Style
FUNERAL COMPANY

www.lifestylefunerals.com.au

Lady interested in playing Canasta occasionally during day preferably.

Maybe there are others out there who would enjoy a game of cards, as I do.

Register your interest with SpringDale.

BELLARINE
VETERINARY PRACTICE
— ANIMAL HOSPITAL —

**For all your pets needs
For an appointment
please phone
5253 1393**

108 High St, Drysdale

Exciting Outside Artwork at Drysdale Primary

The children at Drysdale Primary School have been extremely busy preparing a collection of wooden bollards.

Each bollard will represent a selection of artwork which the children have been studying in their classroom.

For example, the children in Grade One have been learning about the sea creatures and so they will be able to paint a colourful creature on their levels bollard.

Drysdale's creative art teacher Mrs Gault said "the bollards will be a wonderful and extremely colourful addition to our school". The wooden bollards represent Drysdale's positive approach to an integrated curriculum. The children will have a lot of fun with participating in this project.

Mrs Thompson



Music Lessons!

JULIAN FOORD
(Adv. Dip. Music)

Piano - Saxophone - Guitar

0400 704 005

ALINGA

LANDSCAPE DESIGN

Plan your garden to make it part of your home!

- On site garden consultations
- Expert advice in plant selection
- Computer generated plans and images of your new garden!

Neil Myhillon
Ph: 03 5253 1299 email: alingadesign@bigpond.com

Painting?



Wallington
MITRE 10
Home&Trade
All the help you need

For the
BIGGEST Paint
and Accessories
store on the
Peninsula.....

Corner Grubb Road
and Bellarine Highway
Wallington
Ph: 5250 2855

OPEN 7 DAYS

Lions Club of Portarlington/Drysdale



The Portarlington/Drysdale Lions Club had their annual changeover dinner on Tuesday 27th June 2006 at the Portarlington Guides Hall. The dinner was wonderfully catered for by the ladies from the Guides Association. The newly installed President of the club for 2006-2007 is Lion John Emerson. One of the highlights of the evening was a talk by a very inspiring young

lady by the name of Kelly Cartwright who is no doubt known to a large number of people in the district. She spoke of circumstances surrounding the tragic loss of her leg through cancer, and her dream of one day becoming a competitor in the running at the Para Olympics. If the determination that she displayed with her attitude during her speech is any indication,

we are sure that she will go a long way to achieving her goal. At the end of her very inspiring speech, she was presented with a cheque for \$1,000.00 by the retiring club President Ray Meaney on behalf of the club, and wished every success in her quest.

Over the past year the club has donated over \$13,000.00 to various local charities, schools and other needy causes, so we hope that when you see the various fundraising Lions Club projects, such as our Crayfish Spins, and the Lions Club Xmas cakes for sale in various locations, you can be assured that the money raised from them will then be put to good use in the local communities.

The Lions Club of Portarlington/Drysdale is only a very small club in number and we would welcome any person who is community minded to join us. If you have any interest in joining our Club, the president John Emerson on telephone 5259 1859 or Secretary Cam McLean on telephone 5259 1481 will only be too happy to answer any questions you may have.

French Group report

Our French Group got off to a great start for its few first meetings with dozens of Francophiles attending; but our numbers have dwindled seriously down to half a dozen regulars or fewer. Last meeting which was a crisis meeting was attended by eight people. We decided to move to monthly meetings instead of fortnightly meetings, and to try again until Christmas this year when we will review our progress.

We had a couple of French film nights; we always have plenty of food and drink accompanied by French music and conversation mostly in French but often in English on topics French.

Initially our group had a number of

people who spoke little or no French. Being a French speaker has never been a requirement to join the group activities. If we are watching a French movie it will have English subtitles. With many of the songs we try to hand out both French and English words so that no one feels left out.

I think that many of our early attendees expected that they would be taught French: that is not our aim. Our aim is to celebrate and enjoy things French and French culture as far as possible, by whatever means we can. There was a suggestion that we might split into small groups with beginners in the language in one group, non French

speakers in a group and fluent speakers in another group. That approach has both strengths and weaknesses and it tends to happen naturally that way sometimes.

Resources people with energy, action and ideas are always welcome. All Francophiles are welcome to attend. Please bring a plate or a bottle.

Meetings are held on the last Friday evening of the month at 7.30 pm alternating between the SpringDale Neighborhood Centre and one of the member's homes.

For any information call Josh Gay Ph 5251 1596

Naturopath

Lisa Taylor N.D. (A.N.T.A.)

Drysdale Community Health Centre
21 Palmerston street

Monday & Thursday
appointments ph: 5251 2291 AH: 5251 2544

Also available at Carmoor Clinic, 343 Moorabool St.

Wednesday & Friday: Ph 5223 2616

Specialising in women's and children's health using
Herbal, Homoeopathic and Soft Tissue Therapies.

MAGGIE GOVE N.D.

Bowen Therapist
& Naturopath

Member of A.N.T.A.

**Drysdale: Clinic 03-5251 1188
Ah 03-5253 2230**

(Rear of Elegant Profile)

DRYSDALE REMOVALS & STORAGE

Local, Country,

N.S.W. & S.A.

PH. (03) 5251 3674

YOUR LOCAL REPRESENTATIVES

Drysdale Rotary

I was delighted to join Members and friends of Drysdale Rotary at the Curlewis Golf Club for their Change Over Dinner on Monday, 22nd June.

The contribution that the Drysdale Rotarians make to the community is well known and admired. Their commitment and sheer hard work is particularly appreciated by the many people who benefit from the projects they support.

I would like to acknowledge the hard work of the outgoing President, Mercedes Drummond, and wish the new President, Ron Peacock, all the best in the year ahead.

Schools Sports Grants

I am pleased to announce that all government schools and some non-government schools will share in a \$3.7 million Go For Your Life program to encourage young people to be more

physically active.

The grants range between \$1,000 and \$3,000, depending on the size of the school and mean schools will be able to buy extra sporting equipment.

Local schools include:

Drysdale Primary
Clifton Springs Primary
St. Thomas' Primary
Bellarine Secondary College
Catholic Regional College
Christian College Bellarine

The aim of the program is to encourage more students to take part in sporting activities and those who already participate will be able to enjoy using the latest equipment.

We love our sport, which was obvious with the terrific support for the Commonwealth Games and then for the Socceroos in the World Cup, but it's important that we encourage young

people to get into the habit of playing sport, not just watching and cheering from the sidelines.

Savings for Community Groups

I have been advised that both the NAB and Westpac are offering fee-free accounts for community groups and charities.

I encourage community organisations to contact the banks for more information.

Please don't hesitate to contact me if there are any issues you would like to discuss, or any matters I may be able to assist you with.

Until next time

Lisa Neville MP

Member for Bellarine

5248 3462

New fencing for McLeods Waterholes Reserve in Drysdale

City of Greater Geelong Councillor Tom O'Connor has announced that new fencing will be installed at McLeods Waterholes Reserve in Drysdale. Cr O'Connor, who holds Council's portfolio for environment, said there had recently been significant damage to a number of new trees planted in the reserve. He said this had been caused by vehicles being driven over the young trees. Deep wheel ruts had also been left in parts of the reserve.

"McLeods Waterholes Reserve is a popular natural area that abuts Wynd-

ham Street, Connors Road and the Drysdale Recreation Reserve," Cr O'Connor said. "Council has been undertaking a noxious and environmental weed control program in this area for many years as well as revegetating it with local indigenous species. The two waterways within this reserve provide habitat for a diverse range of waterfowl, including the rare Blue-Billed duck."

Cr O'Connor said Council was proposing the installation of low, rural-style post and rail fencing around the reserve where it abuts Connors Road and Wyndham Street, as well as where it adjoins the Drysdale Recreation Reserve. "This fencing will not impact

on pedestrians or cyclists using the reserve and will not impact on vehicle movements within the Drysdale Recreation Reserve or the market area," he said. "The alignment of the fence along the two roadways will be set back sufficiently to allow for vehicles to park safely off the roadway."

Cr O'Connor said he believed local residents would support the new fencing program at the reserve, to be undertaken over the next few months. Anyone with queries regarding this matter should contact Bruce Humphries, Council's Senior Environmental Planner, Environment & Natural Resources Unit on 5227 0837.



Phone: 5253 2099

*Counselling Centre
*Life Skills Seminars
*Foodbank Plus
*Second Chance Clothing



Lynette's
User-Friendly
Computers

Personalised
Tuition & Training

Ph: 5259-3963

Serving the Bellarine Peninsula

WANTED

Child Minder/Housekeeper
wanted for a few hours per
week.

Contact Katrina on
52511336 for more details

Wages negotiable.

BELLARINE SECONDARY COLLEGE LANDCARE NURSERY

**WILL NOW BE OPEN TO VOLUNTEERS
ON THE SECOND SUNDAY OF EACH MONTH.**

FROM 1 TO 4 PM

ALL WELCOME - NO EXPERIENCE NEEDED

The activities undertaken will depend on who turns up and may include:

**indigenous plant propagation
garden maintenance and planting
structure maintenance and building**

No orders can be picked up on Sunday – yet!

Belchers Rd (off Grubb Rd), Drysdale

School holiday program running are you interested - in the past we have had requests? - now we are ready to set it up if there is interest. Phone SpringDale 52531960 to register your interest.

**Do you feel insecure at night?
Is the garden becoming a burden?
Are you too far from shops & services?**

LIFE IS FOR LIVING!

The Drysdale Retirement Village

37-43 Collins Street, Drysdale (Opposite Christian College)

has many attractive features to make YOUR life more enjoyable.

Architect-designed, B/V one & two bedroom units are now available at great prices!
(SOLD ON STRATA TITLE)

Drysdale's shops, Doctors, Senior Citizens Club & library, are only five minutes walk away!
Resident managers ensure 24 hour a day security.

Forget that tiresome garden. Relax & enjoy life with friends in the Village

Call the Managers, Jeffrey & Glenyce Richardson on 5253 2603 for more details and inspections.

Drysdale Senior Citizens club

Our trip to the casino went well and then to the Seeing Eye Dogs which was very interesting though we were disappointed there were no puppies (wrong time of the year), but we enjoyed it. They are marvellous dogs and the things they can do.

Monday August 7th will be an afternoon with Danni Blume, we will have soup and sandwiches at 12noon followed by the fashion show at 2pm. The lunch and show will cost \$5.00, if you want to come along for the show only it will cost \$2.00.

Please note with Danni Blume coming on the first Monday of the month, we will have Bingo on the following Monday the 14th August at 1.15pm, with our trading table. Hope you can come along and have a bit of fun. Everyone is welcome.

Tuesday 15th August we have our monthly visit to the Clifton Springs Golf Club for lunch. If you need transport let us know and we will arrange it, names must be on the list at the club and we are booked for 12noon.

Our club is going well and we have a few new members, and they seem to be enjoying themselves. We have a friendly group of members, so come and see us and have a cup of tea, you will be made welcome.

To all our sick members we send our best wishes and a speedy recovery.

President Esther Lornie

Secretary Mary Hose

Local Bees Local Honey

Part 1

It has always amazed me that people know so little about their own environment. Having said this sitting in the garden and listening to the quiet buzz of the bees working from flower to flower, few people realise that it is not a random selection that the bees working happily in your garden are actually an all female work force that are there under specific orders to collect pollen or nectar from that flower.

Life in the hive is extremely regimented and as the first dim light of day appears scout bees are sent from the hive to find the days requirements of pollen (protein) nectar and water.

The scouts go in all directions from the

hive in search of the colonies needs on locating what they need they return to the hive and tell the worker bees the work that they will be doing for the day. Included in these orders are pacific directions to the source including the colour of the flower that they are to work. Looking at it from a human point of view they are given Melways directions with a street name and house number. This is all conveyed in a bee dance which is one of the forms of communication that they colony uses to run its day to day activities.

Having received their orders and the directions the worker bees leave the hive using the sun to navigate their way to their work area. Even on a cloudy

day the sun is still used as the bees eyes picks up the sun through the clouds. There can be several hives working the same area. If you are working in your garden and remove the plant that the bees are working on they will not go else where but will return to the hive and inform the scout that the plant is not where they were told. In the way of all good overseers the scout bee will go and check and then return with new orders for those workers affected by the plant removal.

Mark Cornell

Leopold Honey

Apiarist C593

FOOT HEALTH CARE FOR ALL AGES



**Michael A. Nicol
Sue Partridge**

General Consultations
Diabetics and High Risk
Orthotic Therapy
Nail Surgery
Veterans' Affairs
TAC and Work Cover

**DRYSDALE
5251 2958
27-29 High St. Drysdale**

DON'T LET YOUR COMPUTER BEAT YOU

We can help you:

Improve your
productivity;
Clean up and/or
prevent scumware;
Improve computer performance;
Edit your digital photos.



Have a private lesson — your
house or ours

*Contact us for assistance
with any computing concerns
or queries you may have*

Phone Joy or Barrie on 5251 2115
CLANCIE Specialised Services
www.CLANCIE.here.ws

Do you have any
Nationally Accredited
courses that you would
like us to offer next year
- or even the year after?

We will continue to
offer First Aid and Food
Handling and Supervisor
courses as we have for
many years.

Next year a Children's
Services course /
another Aged Care
course or your
suggestion?

Phone SpringDale to
register your interest
52531960.

Clifton Springs Golf Club

Play by the Bay

Phone 5251 3391



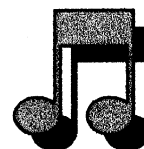
GOLF MEMBERSHIPS
ONLY \$527.00 FOR 11 MONTHS
PAYMENTS BY INSTALLMENTS
AND NO JOINING FEE



Green Fee Players Welcome
\$22.00 for 18 holes
Magnificent Couch Fairways
Bookings 5253 1488



Saturday October 21st 2006
Robbie Williams Tribute Show
\$45.00 p.p.
Includes 2 course dinner



"PUSH YOUR LUCK"
PROMOTION
EVERY FRIDAY NIGHT
6 DRAWS FABULOUS PRIZES



BISTRO DINERS ONLY PH 5251 3391 FOR BOOKINGS

Also All Categories Members Draw + Regular Raffles
Pots for glasses prices Fantastic Views

Try our Fabulous Lunches
Prices from \$6.50
Monday – Friday only



Sunday to Thursday Evening



\$5.50 Meal Deal

Buy one main meal off our regular menu and
receive another of equal value for
only \$5.50

on presentation of this coupon

**Not valid Public Holiday or Long Weekends*

Valid until Aug 31st 2006

Conditions Apply

News from the Friends of the Bellarine Rail Trail



The following is an article by Geelong Field Naturalist Dave King, about the trail environment.

Regarding the question of trail habitat of 200 years ago - I would have to say it is vastly different today, mainly in extent. There have been a number of plant extinction's and ground cover in the form of plants. Fallen timber and natural vegetation litter has been depleted. Again fire would have played a part in habitat formation in the past.

Some Rail Trail Invertebrates

By far the majority of invertebrates, of course, are under ground, under bark or within vegetation. Those that are not, usually employ some form of camouflage. The most visible are those that fly, hop or form large aggregations. Another factor is that of seasons. Warmer months tend to be when they are most likely seen.

Butterflies of course, are readily ob-

served. Of these the most common will be the Cabbage White which is not a native species. A native species that is often seen in numbers is the Common Brown, a medium size butterfly of chocolate brown colour and dark markings, on each wing a small blue spot surrounded by a black ring. An interesting fact is these butterflies in the spring will be mostly males. As the season progresses the proportion becomes even, until late summer and autumn when females outnumber the males.

Small blue butterflies can be observed in large numbers on many occasions. Casual observance may suggest that they are all the same species. In fact there are several. The most abundant blue to be seen is likely to be the Common Grass Blue. Its caterpillar is variable in colour from pale green to pink, feeding on a variety of legumes (Leguminosae).

On occasions during late summer to early autumn a brightly coloured Wood White butterfly is often seen, particularly in areas where mistletoe is growing on trees. It is a relatively large butterfly, white above with black margins, underneath various markings of black, yellow, red and white. It seeks out mistletoe in order to lay its eggs and for the resulting larvae to feed upon.

Mid-summer may see good numbers in a variety of scarab beetles, often

referred to as Christmas Beetles. Under certain conditions they will swarm in large numbers, particularly around lights. The immature stage is a curl grub that feeds on roots of grass and other vegetation. They pupate and usually emerge en-mass as adult beetles after a period of rain.

Low on the popularity scale are the ants, a diverse group of very many species - from the ecological aspect an important group of insects. Apart from being a food source for many creatures, they are an important element in turning over and aerating the soil. A number of species collect seed, using only the elaiosome (the small process that attaches the seed to pod) as food, discarding the seed underground with high possibility of germination. A common species of ant, the Meat Ant, can be frequently observed running over a low and extensive mound of small sized gravel covering its nest, consisting of tunnels and chambers that go down as much as one metre depth. As a medium sized ant their appearance may look formidable; it is not to be feared though, as it carries no sting.

Dragonflies are a common and visible insect as they patrol back and forth picking off any small flying insect that may stray into their territory. Being highly territorial, any other dragonfly intruder will be ferociously attacked and driven off.



Drysdale Motors

FOR ALL AUTOMOTIVE
TUNING AND SERVICING

Specialising in
LPG DYNO TUNING

Have your LPG vehicle Tuned on a "rolling road". If your car runs on LPG And hasn't been dyno tuned Then it hasn't been tuned.

- Roadworthy Testing
- Fuel Injector Cleaning
- Air Conditioner Servicing
- LPG Conversions
- New Car Servicing

44 Murradoc Rd, Drysdale, 3222.
PHONE: (03) 5253 1033.

The Bendigo way.

(You wouldn't want it any other.)

At Bendigo Bank we are here to serve you, not the other way around.

Everything we do is designed to make things easier for you. That is why we offer the convenience of banking over the phone and computer, as well as traditional friendly face-to-face service.

We also offer a full range of personal and business banking products and services.

For more information call into 44 Newcombe Street, Portarlington or phone 5259 3266.

Bellarine Peninsula
Community Bank® Branch Bendigo Bank



www.bendigobank.com.au Bendigo Bank Ltd, Fountain Court, Bendigo, VIC 3550. ABN 11 068 049
178. AFSL 237879. (bb22971-v3) (7/06/2006)

SPORTS REPORT

The Bayside Sharks are Kicking Goals for St Leonards



We are already half way through the soccer season and every team has had some success. Many goals have been scored and each team has improved in their level of team play. Of the 5 teams we put into the competition this season, the senior men have been most successful and are positioned mid ladder.

Our development priority for the club is to repair the existing flood lights at the ground to enable night training. Any support with this venture would be well received. We have been well supported by our major sponsors, St

Leonards Foodworks Supermarket, Portarlington Country Butchers, and Jennings Transport Drysdale. Our minor sponsors this year include Mitre 10, St Leonards Bakery, Subway, Clifton Springs Cake Shop, Wise Guys Hairdressing Drysdale, Pinky's Pizza, KFC, Video Ezy, Pizza Hut, Wendys, La Porchetta, and St Leonards Fish and Chips. We have also been supported by Jan Farrell and Lisa Neville. The Bayside Sharks thanks all our sponsors as they have helped expose our children to this fantastic game at a

greatly reduced cost.

With the success of our National Team in the World Cup interest in soccer continues to grow. Next year we will include an under 16 girls team and possibly other teams depending upon demand. If you would like to play next season you must register your interest with Murray Hall (ph.5257 2106), so that appropriate provisions can be made to include extra players. Pictured are the players and coaches of the under 11 team this year.

Bellarine Bin Hire

Drysdale - Ocean Grove

1.5, 2.5 & 4m³ bins

FREE CALL

1800 104 313 | 0419 543 283

Servicing the Bellarine Peninsula

Uniting Care

CONCERN VILLAGE OP-SHOP

Shop 4 Village Walk
19 Springs Road
Drysdale

Phone: 5251 3640.

We value your custom.
Donations of clean goods always welcome.



**18-20 HIGH ST. DRYSDALE.
OPEN 7 DAYS A WEEK
11am - 4pm**

All Public Holidays except: Good Friday, Anzac day,
Christmas day, Boxing day and New Years day.
New Members always Welcome

Ph: 5251 1605

SPORTS REPORT

Crunch time for the Hawks

The Drysdale Hawks season is on the line after an indifferent first half of the year. Finals are still a real possibility but an improved effort against the top teams is required with a pack of very competitive sides waiting for the young Hawks to falter.

Inconsistency has been the teams achilles heel with the opposition taking full advantage of Drysdales' lapses. However, the Hawks have been in winning positions in all games & if they can maintain concentration for the whole four quarters, anything is possible. The recent game against Ocean Grove was a classic example of this. A slow start saw the boys six goals down at quarter time & in deep trouble. But things changed drastically after the break with Drysdale players running & tackling much harder than their arch rival as momentum swung the Hawks way. In a stunning display punctuated by quick accurate disposal, fierce pressure, & smart teamwork the Hawks reeled in the deficit & then ran away to win by five goals. For three quarters Drysdale played football of the highest standard,

but unfortunately efforts like this are the exception, not the norm. To take the next step & seriously challenge for a premiership the team must find a way to produce this form week in, week out.

The efforts of some players however can not be questioned. Luke Maher has been a colossus all year at full-forward kicking bags of goals week in week out. Opposition teams are fully aware of his dominance & often have two or even three players trying to curtail him, usually to no avail, but he can not do it alone & other avenues to goal must be found. Reece Holwell's performances have been nothing short of outstanding. His ability to push himself, his courage, & his desire are setting standards which all players should be striving to reach. Reece is one of the fittest players going around yet finishes each match exhausted, he does not know how to give up. Simon Nelis, the skipper, is all class. Opposition teams love to hate him, he talks the talk & walks the walk, is strong & extremely skillful. Grant Foot is having another great year.

At an age when most players would be entertaining thoughts

of retirement Grant continues to amaze & intimidate opposition teams, he is a marvelous servant of this club. Too much is often left to these guys, yet one young player to really step this season is Julian Hildebrand. After many setbacks due to injury in previous years Jules has strung together a series of very impressive performances this season. He is young, cocky & gifted, lets just hope he can stay fit. Unfortunately injuries effect all clubs & Drysdale is no different with several big names being struck down. 'Boomer' Hildebrand, Justin Higgins, Josh Inglis, Ryan Gatgens, Joe McLean, & Peter Preece

have all had their troubles this year & we hope their luck changes in the second half of the season. If the Hawks can get their best side on the ground, regain some confidence, & stay focused anything is possible but they are fast running out of chances. One thing is for certain, they need your support, so get down to the ground & get behind your team - in the closest season in years, it might just be the difference.

Good luck to all teams on the weekend & GO HAWKS.



chartered accountants

scott cleary & co



- ▼ Tax Returns
- ▼ BAS Returns
- ▼ Small Business Advice
- ▼ Investment Advice

Belmont office - 5244 1622

1st FLOOR, 35-37 THOMSON ST, BELMONT

Drysdale office - CNR. OF SPRINGS RD. & HIGH ST, DRYSDALE

www.scc.net.au

BELLARINE AUTO SERVICES

Quality Mechanical Repairs
Tuning - Servicing
LPG Conversion - EFI
Tyres - Batteries - RWC
Licensed Vehicle Testers

Mortimer St. Drysdale
Proprietor: J. Pamplin

Ph. 5253 1644

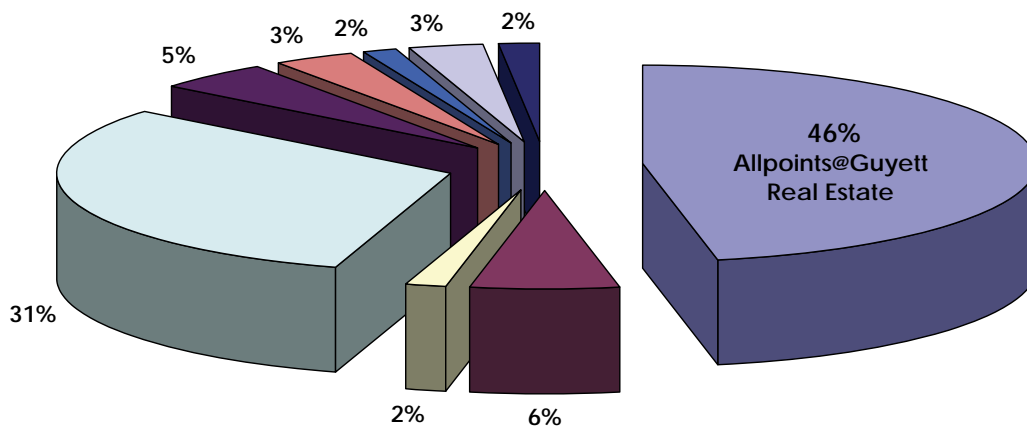
CONCEPT CAMPERS

Manufacturers and repairers of Annexes,
Awnings, Tonneaus, Tarps, Horse Rugs,
Boat Covers Custom Built Camper Trailers
Caravan and Boat Storage
Discount for senior citizens

Phone (03) 5253 2569
61-63 Murradoc Rd. Drysdale.

AllpointsTM @ Guyett

Our Results Speak For Themselves
“You Can List With Any Agent –
But If You Want To Sell, List
With Us!”



**The Market Share of Sold Properties in the
Drysdale/Clifton Springs Area**

(Sourced from Real Estate.com as at 31st May, 2006)



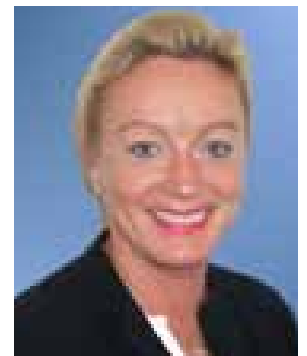
Phil Cumming
0408 599 232
Residential Sales



Jackie Webb
0417 552 456
Residential Sales



Kerry Hardy
0412 105 739
Residential Sales



Prue Street
0400 030 729
Residential Sales

AllpointsTM @ Guyett

Ocean Grove
75 The Terrace
5255 1000

Barwon Heads
84 Hitchcock Avenue
5254 3100

Drysdale
11 Clifton Springs Rd
5251 2847

Leopold
22 Dorothy St
5250 1533