

# The SpringDale Messenger

Your Free  
Community  
Newspaper

Compiled and published by the SpringDale Neighbourhood Centre Inc A002916V

Circulation 4,500

ABN 21 404 220 267

Vol 16 No. 8, September 2006

Ph: 5253 1960 Fax: 5253 3050 email: [messenger@springdale.org.au](mailto:messenger@springdale.org.au) [www.springdale.org.au](http://www.springdale.org.au)

## The Walking School Bus



Under the guidance of City of Greater Geelong, Drysdale Primary School is commencing a Walking School Bus program and Clifton Springs Primary School is still looking for a champion for this project.

### What is a Walking School Bus?

The Walking School Bus is a fun, safe and healthy way for children to get to and from school. The bus is propelled by foot power and follows a route and timetable, just like a real bus. The children are picked up and dropped off at

designated bus stops along the route. There is an adult "Driver" (Volunteer) at the front and, if the bus has more than 8 passengers, a "Conductor" at the rear.

Bus routes are determined by the availability of bus drivers and where children live who want to be part of the program. (Therefore, a bus does not have to run morning and night for 5 days. It may operate just mornings, or morning and night for two days a week!)

The program aims to achieve improved road safety for children and there are physical and mental health benefits for both the children and adult volunteers participating. If many

buses become operational, reduced traffic congestion and car emissions, associated with busy school 'drop off' and 'pick up' times, may be achieved.

If you would like more information, or would like to be a Volunteer for a Walking School Bus, please contact Drysdale Primary School Office. Ph. 5251 2272 or Clifton Springs School office on 52513 3581.

A Police Check will be obtained for each Volunteer and Volunteers must also complete a brief training session (approximately 1 hour) with the City of Greater Geelong.



**DRYSDALE  
VILLAGE  
HARDWARE**  
**(03) 5251 3267**

YOUR HANDY  
HARDWARE  
STORE

THE ARCADE  
HIGH STREET  
DRYSDALE, 3222.

# Westpac

- OPEN SATURDAY
- HOME LOAN CENTRE
- GOOD TERM DEPOSIT RATES

CONTACT: WAYNE, LISA,  
BEV, PAM OR MICHELLE  
5251 1624

**SHOP 9, SUPERMARKET  
COMPLEX, DRYSDALE**

# The SpringDale Messenger

The SpringDale Messenger is compiled by the SpringDale Neighbourhood Centre Inc. A0024916V,  
17-21 High St. Drysdale.

Postal: P.O. Box 80, Drysdale, 3222.

## All editorial and initial advertising enquiries to SpringDale Neighbourhood Centre

**Phone: 5253 1960**

**Fax: 5253 3050 or email**

**messenger@springdale.org.au**

**www.springdale.org.au**

All contributors are asked to provide their articles on disc (Microsoft Word) or email it for ease of processing. Contributions are still accepted as written copy but need to be submitted in the week prior to our copy deadline.

## Next Publication – Oct. 2006

### Copy deadline:

**4th September, 2006**

### Distribution:

**22nd September, 2006.**

**Views expressed in this newsletter are not necessarily the views of the Publisher, the SpringDale Neighbourhood Centre Inc.**

### Advertising:

To ensure publication in a specific issue, copy must be submitted prior to deadline.

This includes both new adverts and alterations to an existing advert.

Layout and Design of this issue by Pagination Design Services, Geelong.

Contact at Pagination Design Services, Geelong is Anthony Zavaglia.

**Max Simmons PhD (Flinders)**  
Health and Counselling Psychologist

- \* Sleep difficulties
- \* Persistent pain
- \* Anxiety & depression
- \* WorkCover and TAC injuries
- \* Substance use
- \* Life skills

27-29 High Street, Drysdale, Vic. 3222  
Phone: (03) 5251 2958 Mobile: 0414 833 290  
email: max.simmons@datafast.net.au

## Community Calendar

**SpringDale Community Calendar – a SpringDale Neighbourhood Centre initiative to support the whole community.**

*This calendar will enable you to quickly look up what is happening over the next couple of months (maybe longer) in our area. There will be a calendar for the next 12 months put on our website—accessible to all groups to help when planning events. If you would like to place an event on our calendar on the website and also in the next couple of issues of the SpringDale Messenger—then please email, write or ring the details of the event through to the SpringDale Office.*

## 2006

Sept	1-8	Adult Learners Week
	4	SpringDale Messenger copy deadline
	16	Clifton Springs Tennis Club Bus Shopping trip (Phone Alison on 5251 2543)
	17	Drysdale Community Crafts Spring Fair- 10 am to 4 pm At SpringDale Neighbourhood Centre
	17	Charity Golf Day at Clifton Springs Golf Club run by Lions Club of Portarlington/ Drysdale
	18	Garden Club Meeting, Uniting Church Hall, Drysdale 7.30 pm
	18	Clifton Springs Tennis Club Free Open Court Night, 7 pm to 9 pm
	20	Drysdale/ Clifton Springs Community Association, A.G.M. 7.30 pm at Senior Citizens Hall, Village Square
	22	Drysdale Ladies View Club Lunch Meeting at Clifton Springs Golf Club Function Room, 10.30 am
	23	The Dell Clean Up, 9.30 am
	24	Portarlington Market
Oct	2	SpringDale Messenger copy deadline
	2	Seniors Week
	8	2007 Adrian Mannix Community Award Nominations Close
	15	Waterwise Gardening Expo at the Geelong Botanic Gardens 10am-4pm.
	21	Drysdale Fire Brigade Monster Garage Sale at the Fire Station
	21	Robbie Williams Tribute Show at Clifton Springs Golf Club
Nov	4	Clifton Springs/ Drysdale Garden Club, Annual Flower and Garden Show, Drysdale Uniting Church Hall
	7	Melbourne Cup Luncheon at Clifton Springs Golf Club, supporting the Drysdale Fire Brigade

## 2007

Feb		Adrian Mannix Community Service Awards Dinner
Mar	17	Bunyip Festival at Drysdale PS

.....There's room for your club's information night, membership drive day, special event to be listed here - please send the information to SpringDale for inclusion in this section.



**The Drysdale...**

**COFFEE • LUNCH • DINNER**

**OPEN 7 DAYS**

Lunch and dinner  
**Reservations: 5251 2301**

Sports bar • TAB  
• Kids Playground  
• Alfresco beer garden

**DRYSDALE HOTEL** High Street, Drysdale.



**Drysdale Physiotherapy & Sports Injury Clinic**

■ Spinal ■ sports ■ Manipulative ■  
■ Arthritis ■ Workcover ■ TAC ■ Vet Affairs ■  
■ Hydrotherapy ■ Exercise Rehabilitation ■

**Peter Terry** MAPA, MPAA  
and associates

**Ph. 5251 2958**

27 - 29 High Street, PO Box 179, Drysdale 3222

# NEWS FROM SPRINGDALE NEIGHBOURHOOD CENTRE

## Dear Friends, residents and people I've not quite met yet.

Isn't the year flying by? School holidays are just around the corner, then the next suite of classes start and we're already planning courses for 2007. Sometimes its hard to swap between planning and reality and keep track of the real date !

The 3rd edition of our Business and Services directory is about to be printed – if you have a business and have thought about the most effective advertising you can do – maybe this is it. Our Business and Services Directory is a booklet of local businesses and sevicees that will hopefully make it easy for our residents to find you and what you do. Please contact SpringDale immediately if you would like your business or service included.

We have been doing a review of our Membership administration system and it is with great pride that I share, that SpringDale currently has 265 members and almost 500 students through the door this year, who are eligible to become members. Also there are approximately 50 families who use our Occasional Care service. Combine that with the number of people who contribute to, advertise in and read our monthly SpringDale Messenger you'll realize that SpringDale tries to do something for a large proportion of our community and if you haven't quite found us yet please take time during Adult Learners' Week 1<sup>st</sup> – 8<sup>th</sup> September we would love to show you

around. Please ring to book a time to suit you.

A few times this week I've heard people talking about how safe they feel in our part of the Bellarine, I think that's something we should be very proud of. In Lisa Neville's column, she talks about the funds that are being devoted to developing tourism for the Bellarine. I think it would be great if we were known as the "safest" or the "most accessible" or the ..... what would you suggest?

A member of SpringDale has suggested that we should have a look-out on top of Murradoc Road hill overlooking much of the peninsula. I know I have tried to park and look at the view myself. A viewing spot might be an interesting addition to tourism. Is anyone else interested in this concept ?

Tax Help is proving to be popular this year, our 3 volunteers have seen as many people so far as we had attend for the whole of the tax season last year. Please ring SpringDale to see if you qualify for this free service.

A canasta group is about to start at SpringDale on ..... the concept of this group was suggested only 4 weeks ago and already it is up and running. We have had a small group practicing ball room dancing at SpringDale for a while and they are interested in holding a social dance at SpringDale once a month on a Friday night – please feel free to register your interest in this and we will inform you of the first dance once it is organized.

We are also about to start a group for people who've not been allowed in the kitchen to cook and now need to be able to fend for themselves – please let us know if you are interested in this group.

Who knows what we'll be calling for expressions of interest in next month .... It depends what you decide to suggest !!!

Keep well and please try to find the fun in all you do.

*Anne Brackley for SpringDale Neighbourhood Centre Inc*

### Need a Special Present for Fathers' Day, a birthday or for Christmas

*At SpringDale we have a few things for sale that you might be interested in.*

1. Pedometers (were \$29.95) now \$20.00 – maybe this would encourage a relative or a friend to walk a little further each day. Could be a good present for Fathers' Day ???
2. Vouchers to the value of your choice starting from \$10.00 for a course or to pay for any SpringDale service. This could be good for any occasion.
3. A pin to hold your glasses in the shape of a dragonfly, a race horse with a jockey or a frog – these are made of pewter and are \$20 each.
4. Packet of coffee from East Timor and all the money goes straight back to East Timor via the East Timor – Geelong support group \$6.50 for 200 g

*Hope you might consider some of these items next time you're stuck for a present all are available during our office hours or just ring to arrange pickup out of hours. Phone 5253 1960.*

## SpringDale Facilities

**Personal use of Comptuers**

**Internet Access**

**Photocopies**

**Faxing**

**Laminating**

**SpringDale Messenger in large format**

**Room Hire**

**Tables and Chairs for hire**

**Crockery of hire**

**Reasonable rates and cheaper rates for members**

## Family Law Worries?

Come in for a *free* chat

**RISTEVSKI**

LAWYERS

**1 High St., Drysdale  
(old Post Office) Ph: 5251 3453**



# Drysdale - Clifton Springs Community Association Inc. Annual General Meeting.

The Drysdale - Clifton Springs Community Association Inc. will hold its Annual General Meeting on Wednesday 20th September at 7.30 pm in The Senior Citizens Hall - Village Square Crn. Wyndham St. and Clifton Springs Rd. Drysdale.

Guest speaker Cr. Peter McMullin - Mayor of the City of Greater Geelong.

All Community Members are cordially invited to attend and take part in the evening's proceedings.

## Drysdale / Clifton Springs Community Association Inc

No A0046568H

**Foreshore Sub Committee**

### WE WANT OUR DELL BACK!!

We have recently formed the Foreshore Sub Committee which is a sub group of the Drysdale/Clifton Springs Community Association Inc. We correspond with the COGG Council, our local representative Cr Tom O'Connor, MP Lisa Neville and others who are involved with new programs, strategies, reports and media coverage. We meet on a regular basis in order to establish a co-operative and productive relationship between our community members and

the various bodies involved in making the foreshore a better place to be.

Our primary focus at the moment is to reopen The Dell and restore it to the beautiful place that it once was. We are also interested in restoring, improving and maintaining all areas of the Clifton Springs foreshore including the former Mineral Springs. By the time Springdale Messenger goes to print, the Clifton Springs Coastal Management Plan - Stakeholder Meeting #1 and Community Meeting #1 will have taken place. Hopefully this will see some very real progress made and we will be one step closer to having The Dell open and the Mineral Springs restored. Did you know that parts of this wonderful area are

listed on The Victorian Heritage Register and Inventory?

Did you know that in 1877 The Geelong Advertiser reported that "The Victorian Government analytical chemist states he has visited the mineral springs at Clifton and has examined the waters. What is called seltzer water he finds is nearly identical with the celebrated Apollinaris Water now creating such a furore in Europe, to the almost entire exclusion of all other aerated waters. The imported water is comparatively flat (possibly from being bottled and from a voyage), while the colonial is sparkling and brisk, like the best champagne".

On Saturday 23 September at 9.30am we are holding a Clean Up at The Dell and along the foreshore and you'll be able to meet with the Foreshore Committee. Keep an eye out in The Echo and Independent for further details. We would love for everyone to come along and visit The Dell and the Mineral Springs. Bring your gloves and boots, or just bring a picnic and the family and enjoy the beautiful Clifton Springs Foreshore, crystal clear water and views of the You Yangs. We have a wonderful part of nature right on our doorstep!

If you would like to register to receive further information phone 5253 2586 or 5251 5362 for further info. In the mean time you can support The Dell and foreshore by joining the Community Association (only \$5) and writing to your local representatives (Cr Tom O'Connor & Lisa Neville MP) voicing your ongoing concerns about the sad state of our foreshore. See you on the beach!!

*Drysdale/Clifton Springs Community Association Inc - Foreshore Sub Committee*





**Quality Butcher**  
PETER HOMMELHOFF

**HOMMY'S**  
**QUALITY MEATS**

*For something new and different*

16 High Street, Drysdale 3222.  
Phone: 5251 2270

**Delivering PC Solutions**  
We come to you!

**COMPUTER SALES & REPAIRS**

BROADBAND HELP, VIRUS REMOVAL, UPGRADES,  
CUSTOM BUILT PC'S, GENERAL PC MAINTENANCE  
CALL STEVE AT 03 5253 2558, BELLARINE PENINSULA

**Ph: 03 5253 2558**  
**Mob: 0405 523 606**

**TAX RETURNS**  
Gerry Lilkendey, Reg Tax Agent, CPA

Mobile Service to your home  
Standard-\$78, Concession-\$72,  
2 Ret-\$140

Quick refunds, Quality Service  
Appointments Day & Evening

**Ph 5259 3704 or 0414 952 906**  
25 Spray Farm Lane, Bellarine, 3221

# Clifton springs Primary School

Clifton Springs Primary School is on its way to becoming a 'Waste Wise' school!

Our 'waste wise' approach was launched with a Rubbish Free Lunch Challenge. The Rubbish Free Lunch Challenge is a joint initiative of Sustainability Victoria and the Department of Education & Training. It encourages schools to enhance student understanding of how daily activities impact on the environment and small steps everyone can take to reduce this impact. The Rubbish Free Lunch Challenge targets lunch rubbish and offers a curriculum-based solution to preventing rubbish and promoting healthy eating in schools.

As part of the submission to become a 'Waste Wise' school, we have to show the long term initiatives we have in place to demonstrate our commitment to becoming 'waste wise'.

- In addition to having a Rubbish Free Day we now request that, where possible, all foods come to school without wrappers using reusable bags or containers.
- We have established compost bins in the school grounds and each grade has a compost bucket for their contributions.
- We now have designated eating areas in the yard.
- We have reviewed our canteen menu to reduce the amount of wrapping provided.

- We recycle paper and plastic products.

Having put together our application to become a Waste Wise school, we are eagerly waiting accreditation.

On the 18th of July 5/6E challenged our school to have a rubbish free lunch challenge. Students were not allowed to bring rubbish to school or if they did they would have to put the packet in the bin before leaving the building. I enjoyed the day and think it worked extremely well. Congratulations to every one who participated. NUDE FOOD IMPROVED OUR SCHOOL,

NOW IT RULES!!

Stephanie 5/6E

On Tuesday the 18th of July, our school had a rubbish free lunch day. Our grade had decided to challenge ourselves by getting rid of our big bin and using a small bucket. Our grade wants to see how much rubbish we have used. At recess hardly anyone had rubbish, mainly just containers or fruit. I had an apple, and put it in our grades compost bin. It's almost full. There was hardly any rubbish out of the whole day!

I hope our school can stay like this.

Paris 5/6W



## Painting?



**Wallington**  
**MITRE 10**  
**Home&Trade**  
*All the help you need*

For the  
**BIGGEST** Paint  
and Accessories  
store on the  
Peninsula.....

Corner Grubb Road  
and Bellarine Highway  
Wallington  
Ph: 5250 2855

**OPEN 7 DAYS**



**OPEN 6 DAYS**  
(Closed Tuesday)

- Dining
- Study
- Bedroom
- Entertainment

Huge collection of furniture and homewares, cane-ware, nautical & unique giftware.  
*Floor stock or made to measure.*

*'Country atmosphere with old fashioned service'*  
16 Collins Street DRYSDALE ( Next to Hotel)  
Phone / Fax: (03) 5253 1516



**Weddings**  
**Commitment Ceremonies and**  
**Special Family Occasions**

Local & professional Videography  
and Post-production Services  
0407 531 764

## Better Hearing Australia Inc.

Do you know anyone with a hearing problem? Better Hearing Australia conducts self help sessions in and around the Geelong area including Drysdale and Queenscliff.

Joan Belle is our excellent tutor at the Drysdale location which is held at the Drysdale Community Health Centre, 21 Palmerston Street. Some of the topics covered during sessions are:

- New technology for hearing aids, telephone, television and more.
- Ways to make best use of our hearing.
- Practise in lip reading, concentration, relaxation.

### Session days, locations and times:

Drysdale Community Health Centre – Wednesdays 10.00am – 11.00am, 21 Palmerston Street, Drysdale. Tutor (Joan Belle)

Bellarine Community Health (Point Lonsdale) – Wednesdays 10.00am – 11.00am,

Nelson Rd, Point Lonsdale. Tutor (Norma O'Donnell).

Better Hearing Australia (Geelong) – Mondays 1.30pm – 2.30pm, 199 Thompson road, North Geelong. Tutor (Joan Belle)

Better Hearing Australia's purpose is to help people in Australia with hearing impairment to improve their quality of life.

For more information you can contact our Geelong office on 5278 8300 and speak to Margaret Lannen on Mondays from 9.00am – 3.00pm or Wednesdays and Thursdays from 9.00am – 12 noon.

From a community member who has benefited greatly from this service.

## Have you enrolled your child for 3 or 4 yr old kinder for 2007?

Clifton Springs Pre-school currently offers a 12 hour week for 4yr olds split over 3 days, including two 4 1/2 hour sessions and one 3hr session. Our 3yr old program runs for 2 1/2 hours per week.

Come in and meet our new teacher, Tania O'Hanlon & the ever reliable assistant, Julie Brew.

For an enrolment form, ring/email or drop in.

[clifton.springs.kin@kindergarten.vic.gov.au](mailto:clifton.springs.kin@kindergarten.vic.gov.au), phone: 52513158

21A Central Road, Clifton Springs

## William Sheahan Funerals

Drysdale and Peninsula Funeral Services is being renamed William Sheahan Funerals.

What is happening at Drysdale and Peninsula Funeral Services? Bill has decided to rename his business William Sheahan Funerals. Why the name William Sheahan? Its Bill's name of course! Bill commenced business at Drysdale

in 1998 and he has now decided to personalize the name of his business, so prospective clients realize that they are actually dealing with the owner of the business.

Bill and Sue are looking forward to relocating within Drysdale in 2007. The new premises will be in Murradoc Road, Drysdale. The premises will have seating

for up to 200 with attractively landscaped gardens and ample car parks.

Additional services will include DVD presentations and facilities for on-site catering.

Contact Bill or Sue 24 hours a day, seven days a week on 5251 3477.



*Now incorporating*

**William Sheahan Funerals - 5251 3477**

*All hours*

*Murradoc Road, Drysdale*

*"Committed to Caring"*



**Sue and Bill from William Sheahan Funerals**



# Drysdale Primary School and Junior Australia Robo Cup

For the past 5 years Drysdale Primary School has joined over 6000 students aged 8-18 years in an exciting and entertaining competition called 'Junior Australian RoboCup'. The competition is a national cross curricula Science and Technology activity that trains students to be problem solvers, manually creative and versatile thinkers.

Teams design, build and program a robot to compete in one of the three competition events. Catering for all levels of expertise, the competition events are designed to allow students to set their goals within a framework of co-operation and teamwork. This year there were two teams selected from each year 6 class with 2 students in each team working together to create a robot that would dance.

As well as programming and building robots the dance challenge is a real team effort where students design their own t-shirts, prepare themselves for the team interview and create their costumes. Drysdale Primary Schools Learning Technology teacher, Mrs Black, and her esteemed Technician, Mr Beattie, were the driving force behind these children's robots. Mrs Black and Mr Beattie have given up much time to teach and support the robotic teams over the last 4 months. Everyone from Drysdale Primary School who took part in this competition would like to thank them for providing this amazing opportunity.

On 22nd July Drysdale Primary Schools 6 teams went to compete in the RoboCup Junior Competition at Kardinia International College. Well done to the "Odie" robot creators



Mitchell Chrimes and Sam Morrissy for coming third. But extra big congratulations go to "Garfield" robot creators Amanda Smith and Melissa Sanderson for winning the competition! The girls found that it was much harder to build a robot than they first thought, but they enjoyed themselves throughout the process. Amanda and Melissa said "...at the start we didn't build him strong enough, and he was a little over weight". The girls had to

make a lot of changes to their "Garfield" robot, but the most important thing was that they were ready to go on the day of the competition. Four teams are now going on to Melbourne to compete at Sacred Coeur College, Glen Iris. The next stage is the Nationals in Sydney.

*Mrs Thompson for Drysdale Primary School.*

## Drysdale Community Church

It's great to celebrate our achievements, and to pay tribute to those that have helped us along the way. On Sunday 30th July, Drysdale Community Church and Drysdale Family Support celebrated the official opening of our new office administration wing. We were pleased to have the opportunity to thank so many people, churches and organizations who understand our vision and are happy to partner with us as we continue to work with our community.

Our new offices will make it possible for us to expand the help that we give through our Counselling Centre, Foodbank Plus, and other programs and activities that we offer.

The extensions are also a tribute to the wonderful people who attend Drysdale Community Church. Many of them gave their

time over many weekends to the fitting out, painting and finishing off, and the funding of the project has been made possible by the generous donations of our people.

What God has achieved here, is a group of

people truly living out the vision statement: "Church in the Community, Community in the Church": committed to one another, and together committed to serving our community.

# YOUR LOCAL REPRESENTATIVES

## City of Greater Geelong Customer Service Centre / Notice Boards

Two new information boards are now installed to display photos and relevant information on current and upcoming programs / projects. Community information that also needs display can be arranged with staff members.

## Drysdale Shopping Precinct

Hancock Street pedestrian crossing installed / plantings planned for the coming weeks subject to weather conditions. Traffic survey to be conducted in conjunction with Drysdale / Clifton Springs Structure Plan.

## Drysdale – entrance & exit

Discussions underway with CoGG / Parks & Gardens group for improvements. The proposed upgrade plans & program will be displayed for comment at the Customer Service Centre in the coming weeks. New township signage is shortly to be installed during August / September throughout the Bellarine. Crimea Street refuge – additional lighting to be installed along with further reflective identification.

## Drysdale Recreation Reserve, Netball facility upgrade

At long last, the new toilets and change

facilities are nearing completion with the official opening anticipated. Already and unfortunately two windows have been vandalised and as an alert, please ensure that this type of behaviour is actively discouraged and reported when appropriate.

## Football Clubrooms

Drawings and discussions with key stakeholders are completed for the internal upgrade works.

## McLeods Waterholes Reserve

Letters were sent to the property owners who adjoin & live opposite the McLeods Waterholes Reserve to the Drysdale CFA, Drysdale Football & Netball Club, Peninsula Netball Association, Drysdale Tennis Club, Drysdale Cricket Club & Drysdale Primary School (market convenors) advising them of what is proposed. Over the past month several inappropriate trees from within the reserve have been removed. Specifically, a willow at the edge of the large bottom lake near the outlet channel, a pine on the embankment as you drive in off Wyndham Street, a blue spruce near the lake edge and some dead & diseased Elm trees on the lake side of the roadway off Wyndham Street. Also, one coast tea-tree, three willows, one sweet pittosporum, dead and fallen melaleuca armillaris, a pine, sweet hakea, and dead and fallen black wattles.

All of these works are part of the on-going waterway reserve upgrades to replace non-indigenous trees with local species, as well as remove dangerous limbs & trees and will not directly impact on any of the adjoining properties. This is the extent of tree removal works in this reserve planned for this financial year.

## Jetty Road works

The additional shoulder widening work at Wyndham Street is programmed for October and is subject to additional drainage requirements. The current drainage work north of Wyndham Street requires access approval from the adjacent landowners to ensure completion.

## Clifton Springs / Boat Ramp access road

Works to widen / seal / kerb and channel the existing road plus the adjacent footpath are to commence early next month.

## Drysdale/Clifton Springs Community Business group.

Regular quarterly breakfast meetings are being held at SpringDale Neighbourhood Centre. Please contact SpringDale for more details. All members and interested business groups are most welcome to attend.

*Tom O'Connor*



You can make a difference in the  
life of a child with a disability!

Ask us how.

Phone 52212984

[www.gateways.com.au](http://www.gateways.com.au)

[jennys@gateways.com.au](mailto:jennys@gateways.com.au)

## DRYSDALE CARPET COURT

CARPET - VINYL  
CERAMIC TILES  
FLOATING WOOD  
LAMINATE FLOORS

Proprietor: Neil Petrie  
Phone: 5253 1855 Mobile: 0419 519 030  
63 Murradoc Road, Drysdale.

## FRANK BURGE CARS



KEITH PURCELL

Ph: 5222 1606

Fax: 5221 8608

Mobile: 0418 554 011

172 Fyans Street, South Geelong 3220

## Bellarine Window Clean

Why spend hours of backbreaking hard work trying to clean your windows?  
Let Phill from Bellarine Window Clean give your windows the professional touch.

Our unique cleaning system with attention to detail,  
Guarantees you a "Crystal Clear" finish every time.

### \*Special OFFER!

Whole House Outside Window Clean for \$69.00

Special Pensioner & Seniors Discounts Apply.

Phone Phill Harty today on 0412 19 55 22

100% Satisfaction Guarantee.

## FIREWOOD

SPLIT RED GUM  
DELIVERY ONLY;  
BELLARINE PENINSULA

LOCALLY SUPPLIED  
JUST WOOD

0400 572 861



# YOUR LOCAL REPRESENTATIVES

## Bellarine Peninsula Tourism

You may remember that the Government announced \$250,000 in funding to develop tourism for the Bellarine Peninsula.

Focus groups have been looking at how best to market the Bellarine Peninsula as a separate entity and the results will be used in the strategy that is due to be launched in October.

In the meantime Tourism Victoria has been promoting the region through programs like the TV show Postcards, with the Bellarine Peninsula featuring in 2 recent episodes.

I look forward to keeping you up to date with progress in this exciting project to promote our beautiful region.

## Why Fad Diets Don't Work

I was very pleased to represent the Minister for Health in launching this important Geelong regional Forum. Dr. Rick Kausman from Jean Hailes Medical Centre, and a pioneer of healthy eating as a way of managing weight, was the key note speaker. He talked about the significant issues surrounding fad diets and the healthy, effective alternatives.

The Forum was an excellent opportunity for young people themselves to raise and discuss these issues, and it was great to have students from Bellarine Secondary College participating.

I will continue to promote and support work being done on body image, diet and health as these issues have a major effect, particularly on the lives of many young people and women.

## Heart Foundation Doorknock

Another health issue that has a major impact on our community is heart disease.

I'm delighted to promote the Heart Foundation's doorknock appeal, coming up in September. Money raised will go to projects including research and education programs.

So keep an eye out for them and please give whatever support you can.

## Commonwealth Games 2006

I'm looking forward to attending Sports Days for some of our primary schools and being able to present them with Commonwealth Games commemorative packs, including a Games baton. All the other Schools in Bellarine will have their packs delivered from my office.

These commemorative packs are a way of remembering the fun and excitement that so many students enjoyed. They are also a token of appreciation from the Bracks Government for the enthusiasm and support that Schools across Victoria gave to the 2006 Commonwealth Games.

## Go For Your Life 2006 Sport and Recreation Awards

It's always a pleasure to let you know about awards like these. This is an opportunity to nominate a club or an individual who has made a significant contribution to the community through their involvement with sport or recreational activities.

There are 10 Award categories including:

- Community Event
- Young People in Sport
- Volunteer Involvement
- Community Participation
- Club and Organisational Management as well as the Minister's Award for Lifetime Achievement.

The Awards are open to private, public or community sector organisations or individuals. This is a great way to celebrate the wonderful work of so many dedicated people.

Nominations close on 30<sup>th</sup> August, 2006. **For further information contact my office on 5248 3462**, visit [www.sport.vic.gov.au](http://www.sport.vic.gov.au) or call the Awards Hotline on 1300 366 356.

Until next time

**Lisa Neville MP**  
**Member for Bellarine.**  
**5248 3462.**

## Bellarine Bin Hire

**Drysdale - Ocean Grove**

**1.5, 2.5 & 4m<sup>3</sup> bins**

**FREE CALL**

**1800 104 313 | 0419 543 283**

**Servicing the Bellarine Peninsula**

## Uniting Care CONCERN VILLAGE OP-SHOP

Shop 4 Village Walk  
19 Springs Road  
Drysdale

**Phone: 5251 3640.**

We value your custom.  
Donations of clean goods always welcome.



**18-20 HIGH ST. DRYSDALE.**  
**OPEN 7 DAYS A WEEK**

**11am - 4pm**

All Public Holidays except: Good Friday, Anzac day,  
Christmas day, Boxing day and New Years day.

**New Members always Welcome**

**Ph: 5251 1605**



276-290 Jetty Road, Drysdale.  
Phone: 5253 2341

We invite you to join us for  
**SUNDAY SERVICES**

**9.00 a.m.**

**& 10.45 a.m.**

Great worship, friendly atmosphere,  
and a message relevant to today.

Tee & Coffee served after each service

Kids Church and Toddler Church operates  
during the 10.45 a.m. Service.



Lynette's  
User-Friendly  
Computers

**Personalised  
Tuition & Training**

**Ph: 5259-3963**

**Serving the Bellarine Peninsula**

## Salvation Army Family Stores

**Mortimer St. Drysdale**

**Ph. 5251 2475**

**Plenty of Bargains**

**The Place to Shop**

Come and see us We are here to Help You

## Bellarine Historical Society

We are pleased to advise that the winner of the Bellarine Historical Society's 30th Anniversary raffle was – Mrs S Cramp of Clifton Springs.

Thankyou to everyone who purchased a ticket, our Committee of Management greatly appreciates your support. We look forward to your next visit to the museum.



## Drysdale Senior Citizens Club

Our AGM went very well and we are hoping to have another successful year. Voted in again were Esther Lornie President, Mary Hose Secretary and Bill Clasper Treasurer, we have a new Vice President Joan Scothern and 5 committee members. We have a busy year coming up with shows, trips, meals etc so keep watch in the Echo's Town by Town and The SpringDale Messenger. The annual fees are due so please pay as soon as possible.

We have bingo on Monday 4th September, with our trading table, eyes down at 1.15pm. We are not having lunch at Clifton Springs Golf Club in September as we are having a trip to Burrambeet, which includes a 3 course lunch and entertainment – cost is \$36. This trip relies on 35 or more people, please invite friends along, phone 52512983 for more information.

Monday 2nd October is the start of Seniors Week and we will be entertained by Shirley Power, a well known entertainer, followed by afternoon tea. The show will start at 1pm. Everyone is welcome to attend – people are asked to pay \$2.00 donation at the door. Bingo for October will be held on Monday 9th due to the show being on the first Monday. Tuesday 10th October lunch is 12 noon at the Clifton Springs Golf Club, please let us know if you need transport and we will arrange something.

Monday 16th October we are having "Cliché Fashions" keep your eye on the Echo for more information. We

have lots of activities at our club so please don't sit at home and be lonely, we are a very friendly group and like to enjoy ourselves – we will make you very welcome.

To our sick members it's a bad time of the year for colds and other illnesses, so look after yourselves and keep warm, our best wishes to you all, we are thinking of you.

*President: Esther Lornie*

*Secretary: Mary Hose.*

## Adrian Mannix Community Service Award 2007

We are now calling for nominations for the Adrian Mannix Community Award 2007. If you know of someone who has given years of service within the Bellarine area – you might think of nominating her / him for our community service award. This will be the sixth year of the award and so far more than 40 people have been nominated and recognized for their contributions to our community. Nomination forms are available from SpringDale Neighbourhood Centre and nominations close on Monday 8th October and the award dinner will be in February 2007.

## Drysdale Ladies Day VIEW Club

Stop Press ! A "first" for our Bellarine region! For the first time, Geelong is hosting The VIEW Clubs of Australia National Convention in early Sept., with over 1000 members attending, from all over Australia.

Our Drysdale VIEW Club is one of the two Host Clubs in this area - so we will be busy!

It's a wonderful chance for we proud local folk to showcase our lovely area, as we welcome such an impressive gathering of women.

Our next lunch meeting will be on Friday 22nd September, at the Clifton Springs Golf Club Function Room, at 10.30am.

If you would like to join an active & entertaining club, part of a nation-wide network, meet interesting people, and help support The Smith family's work in assisting disadvantaged school children with its Education For life Program, - then come & meet us !

More info. available from Christine

### The *Life* Shop

Good quality clothing & bric-a-brac.  
Donations of clothing & bric-a-brac  
always welcome.

"Village Walk"  
Shops 9 & 10, 21  
Clifton Springs Rd. Drysdale.  
Ph: 5253 2168

### DRYSDALE REMOVALS & STORAGE

Local, Country,  
N.S.W. & S.A.  
PH. (03) 5251 3674

### BONE MARROW RECYCLE SHOP

High St. Drysdale

Donations of  
good clothing  
and brick-a-brac needed.

All proceeds from our shop go to  
help those with Leukaemia

# Health and Wellbeing

Welcome to your new health and wellbeing column. Each month we will be sharing with you hints, tips, ideas and knowledge pertaining to all things naturally healthy. It is our hope, that by imparting some of our wisdom, we can contribute to the wellbeing of our wonderful community.

This month, the first of spring, and a symbolic one for regeneration and renewal, should see us spending some more time outdoors. As we shed our winter skins and begin, once more, to soak in the sun, let us look at the many ways in which we can benefit from a health point of view.

The first is probably fairly obvious, but we can substantially increase our wellbeing by simply going for a walk. Not only will you be exercising and therefore giving each and every one of your precious cells a workout, you will be breathing the delightful fresh spring air into your lungs. Oxygen is such an important part of the regeneration process that our bodies go through every day and it stands to reason that by taking an active part in this process we will be benefiting ourselves immensely. We have heard it all before, but the health benefits of a brisk 30 minute walk are enormous and you will, within a very short time, leave the sluggishness of winter behind and be ready to leap into the summer ahead.

Walking will also help to trim and firm. Did you, like most of us, gain a small

amount of weight during the colder months? By being active again, they too should quickly depart! What a lovely bonus that will be as you enjoy your wander past the neighbours gardens and witness mother nature's own process of renewal.

The benefits of going for a walk do not end with increased fitness and fewer pounds. Your muscles will strengthen, your lungs will sing, your mind will be clearer, eyes brighter, skin softer and these are only a few of the physical gains. But what about on a less obvious (but just as important) level? As your mind clears of all of the winter 'blues', and you begin to notice the blossoms on the trees, or the first flush of early flowering bulbs, how do you feel?

Is there a smile forming on your face? Do your steps seem a little lighter; have more bounce? Are you eager to feel the grass between your toes? Wake with pleasant anticipation of a joyous day? This season and the activity that it brings, is all about growth – on all levels, so make it a priority to indulge in the 'process' – nature has so very much to offer, make the most of it!

**Kellie Dines**

*Soul Revival Natural Therapy Centre  
Newcomb Street, Portarlinton*

# Bellarine Woodworkers Club

No, this is not a new club, this is a name change or name alignment! A majority of members of the Queenscliff and District Woodworkers Club have voted for a name change, to better reflect the area covered by the membership. Every Bellarine community is represented, the largest group actually comes from Drysdale/Clifton Springs ie 23 of the 67 members.

Things have been a little quiet with many members up north for the cold months, but spring will see all back in action, with our Christmas toy program and upcoming annual exhibition in January next at Queenscliff.

The club will exhibit some of work from members at the Adult Learners Week show on Saturday September 2nd at the SpringDale Hall. Come along and have a chat to us and see what we produce and how you might join us.

**Ray Austen**

## FOOT HEALTH CARE FOR ALL AGES



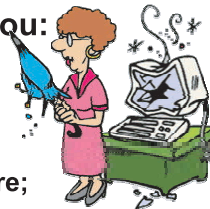
**Michael A. Nicol  
Sue Partridge**

General Consultations  
Diabetics and High Risk  
Orthotic Therapy  
Nail Surgery  
Veterans' Affairs  
TAC and Work Cover

**DRYSDALE  
5251 2958  
27-29 High St. Drysdale**

## DON'T LET YOUR COMPUTER BEAT YOU

**We can help you:**  
Improve your productivity;  
Clean up and/or prevent scumware;  
Improve computer performance;  
Edit your digital photos.



**Have a private lesson — your house or ours**

**Contact us for assistance with any computing concerns or queries you may have**

Phone Joy or Barrie on 5251 2115  
**CLANCIE Specialised Services**  
[www.CLANCIE.here.ws](http://www.CLANCIE.here.ws)

Opening soon



Opening soon

**Naturopathy  
Massage  
Kinesiology  
Crystal Healing  
Beauty Therapy**

**Reiki Healing  
Osteopathy  
Therapeutic touch  
Bowen Therapy  
Lomi Lomi**

And many, many more...

**Yoga  
Meditation  
Workshops**

Newcomb Street, Portarlinton 52591815

## BELLARINE FENCING Co

**We do  
Picket & Paling,  
Fences & Gates.**

Phone: Andrew & Gayle Baylis  
on 5251 3090 or 0417 544 887



# Clifton Springs Golf Club

## Play by the Bay

Phone 5251 3391



**GOLF MEMBERSHIPS**  
**ONLY \$480 FOR 10 MONTHS**



**PAYMENTS BY INSTALLMENTS**  
**AND NO JOINING FEE**

**Green Fee Players Welcome**  
**\$22.00 for 18 holes**  
**Magnificent Couch Fairways**  
**Bookings 5253 1488**



*Saturday October 21<sup>st</sup> 2006*  
*Robbie Williams Tribute Show*

*\$45.00 p.p.*

*Includes 2 course dinner*



**"PUSH YOUR LUCK"**

**PROMOTION**

**EVERY FRIDAY NIGHT**

**6 DRAWS      FABULOUS PRIZES**

**BISTRO DINERS ONLY PH 5251 3391 FOR BOOKINGS**

**Also All Categories Members Draw + Regular Raffles**

**Pots for glasses prices**

**Fantastic Views**

**Try our Fabulous Lunches**  
**Prices from \$6.50**  
**Monday – Friday only**



**Sunday to Thursday Evening**



**\$5.50 Meal Deal**

Buy one main meal off our regular menu and  
receive another of equal value for  
**only \$5.50**

on presentation of this coupon

**\*Not valid Public Holiday or Long Weekends**

**Valid until Sept 30th 2006**

**Conditions Apply**

## Drysdale Ladies Probus Inc. Reg. No. A0021357E

A feature of Drysdale Ladies Probus is the many interesting guest speakers, from a wide range of interests, which are invited to speak at our monthly meetings. Some recent speakers have included Judith Baker- Commonwealth Games Volunteer who spoke about her participation in the Olympic Games as well as the Commonwealth Games and Mrs Julie Gunn-Victorian Commissioner of the Scout Association, who gave very interesting talk about the recent changes to the Scouting Movement. At our July meeting Mr. Paul Whittaker- Valuer, Gemmologist & Diamond Technologist spoke about evaluation guide lines set by national standards. There are many facets involved in evaluating jewelry, some of which include first cleaning the item, then looking at the quality with a special tool called a loop. Establishing the type of gold used is also important eg. 24ct /18 ct./9ct. How much gold is used and what percentage of other metals are included is also an important factor. The stamp inside the item is also important. The item is then tested with acid and weighed. How it is made, whether hand made or cast made also adds to the value of the item being valued.. Paul pointed out that Geelong has a very good selection of



*The above photo shows Paul Whittakers, Valuer, Gemmologist & Diamond Technologist with Judy Grimm who organises our wonderful guest speakers each month.*

hand made jewelry which is stronger but more expensive. He added that hand made jewelry took longer to make and that sometimes a combination of hand made and cast made could be used. A look at the stones is then made to see how they are set and how the inside is finished off. Special instruments are used to check that the stones used are in fact real as there are many ways to make realistic cop-

ies. Sometimes a second opinion is sought by another qualified valuer. A red seal denotes a qualified valuer. Paul's talk was both interesting and very informative. Paul also brought along a selection of jewelry which was of great interest to our members.

*Yours in friendship*  
**Lesley Jones**

## Ladies Probus Club of Bellarine Inc. Registered No. A14696T.

Daffodils, Jonquil and Snowdrops are blooming in the garden, a sure sign that spring is on the way. To cheer ourselves up from the cold of Winter, we had an Old Time Music Hall theme instead of a guest speaker at our last General Meeting held in July.

The Committee formed a band of entertainers so we had some of the usual acts as seen at such concerts. There was a Master of Ceremonies, Cloggers, Monologue, mime artist, Humorous Skit, Soloist, as well as a Heckler. The sing-along of old time songs went down well and the members really enjoyed singing them. The Committee and members were invited to dress in old time clothes, along with the music it was a very entertaining morning.

We went on the Outing arranged by Barry Waller from the South West District to Christmas In July at Mt.

Martha. There were 190 Probus Members from the district attending. It was a good journey by coach and return via The Ferry.

The Activities Groups continue to meet in members homes and include Mahjong, Canasta, Scrabble, Craft and Chat in the dungeon at the Springs. We continue to do the rounds of eating lunch after the meeting at one of the local eating venues. A good time to catch up with people we don't talk to very often.

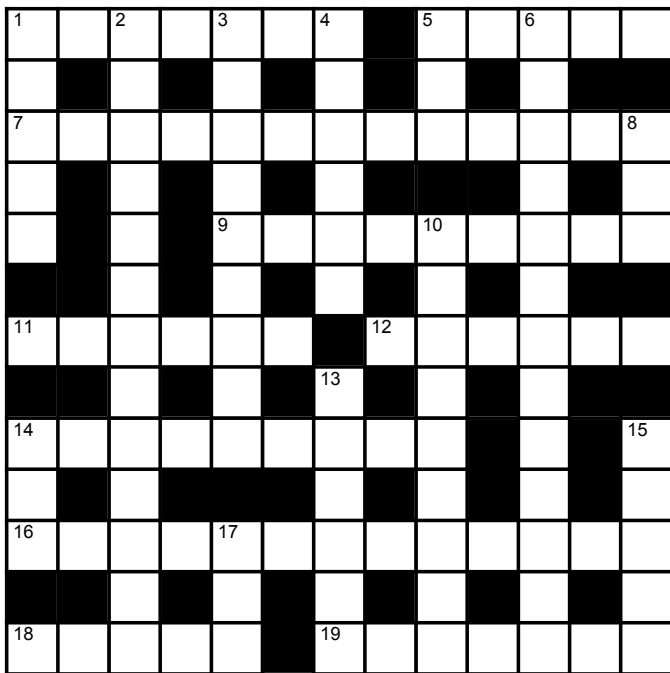
Our Membership remains at 100 so anyone wishing to join us can

apply in writing for an application form to the Secretary PO Box 257, Drysdale.3222.

*Yours in friendship.*  
**Iris Liz Tolton.**



# CROSSWORD

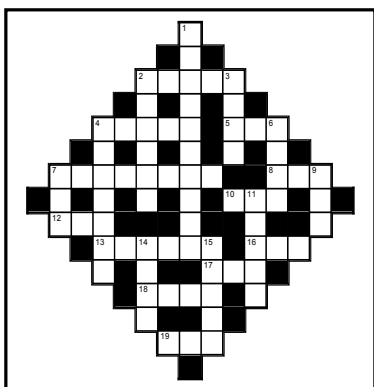


## Across

- 1 Ancestry. (7)
- 5 Move to avoid. (5)
- 7 Deceived. (6-7)
- 9 Opinion. (9)
- 11 Victorian city that is the gateway to the Grampians. (6)
- 12 Aeroplane's accommodation. (6)
- 14 Qualified. (9)
- 16 Healthy. (4-9)
- 18 Herb. (5)
- 19 Takes in. (7)

## Down

- 1 Soup serving spoon. (5)
- 2 Marine distance. (8,5)
- 3 Relieve. (9)
- 4 Surpass. (6)
- 5 Twosome. (3)
- 6 Characterises (13)
- 8 Morse code component. (3)
- 10 Toy. (9)
- 13 Reimburse. (6)
- 14 Hereford or Jersey. (3)
- 15 Fame. (5)
- 17 Nothing. (3)



**Crosswords for Fun!**  
Where all the puzzles are FREE.

**PO Box 515 Drysdale VIC 3222**

**Phone: 5259 1788**

**Fax: 5259 1799**

**Email: [info@crosswordsforfun.com.au](mailto:info@crosswordsforfun.com.au)**

**Web: [www.crosswordsforfun.com.au](http://www.crosswordsforfun.com.au)**



## Canada & Alaska 2007

**Earlybirds Save UP TO \$5000 PER COUPLE\***



**GOLDFEAF CLASS\***  
GUARANTEED UPGRADE



**PRIVATE VERANDAH\***  
GUARANTEED UPGRADE



**LAKE VIEW ROOM\***  
GUARANTEED UPGRADE



**VIEW ROOM\***  
GUARANTEED UPGRADE

23 Day fully escorted tour departing 27 May 2007, \$10,545\* ex Melbourne

+ airport taxes \$430\* & port charges \$415\*



**\$10,000 in Travel Money prizes to be won**  
5 lucky passengers will each win \$2000 spending money from Travellex to spend whilst in Canada\*

Join Scenic Tours on the ultimate touring experience of Canada & Alaska.

Call Harvey World Travel  
**Drysdale 5251 1125**  
**Ocean Grove 5256 1888**

Quote Code 2458 when booking



**HARVEY**  
world travel

The Travel Professionals

\* Conditions apply. Savings per couple twin share and based on earlybird and special season departures. For new bookings only. No further discounts apply. Earlybird Savings, upgrades on Rocky Mountaineer, view rooms and balcony cabins are available for limited seats on set departures. Book and deposit no later than 15 December 2006. Subject to availability. Airport taxes and port charges subject to change. Please note a surcharge may be imposed on credit card transactions. A service fee will be charged. Prize value is in AUD. To enter customers need to book and deposit a 2007 Scenic Tours Canada and Alaska trip at any Harvey World Travel shop in Australia by 15 December 2006. See [www.harveyworld.com.au](http://www.harveyworld.com.au) for full terms and conditions. Permit Number: 06/2179. Scenic Tours Pty Ltd ABN 85 002 715 602. Lic. No. 21A 002 633.

**Crossword**  
answers on  
page 16

**BELLARINE**  
VETERINARY PRACTICE  
— ANIMAL HOSPITAL —

**For all your pets needs**  
**For an appointment**  
**please phone**  
**5253 1393**

**108 High St, Drysdale**



# Consider you've just been asked to spend a few minutes helping the community.....

SpringDale Neighbourhood Centre is made up of 5 different but complimentary parts. One of the very important parts is the SpringDale Messenger – keeping the community connected. This year we have been distributing

the SpringDale Messenger monthly. I'd like to know how you feel about the SpringDale Messenger. So please take a couple of minutes to complete this and then drop it in or send it in to **SpringDale Neighbourhood Centre**

**PO Box 80, Drysdale, 3222. Fax 5253 3050, or drop it into 17 High Street Drysdale – across the Road from the Uniting Church.**

1. How much of the SpringDale Messenger do you read?

---

---

2. Do you have a favourite column that you look forward to?

---

---

3. Is there anything else that you think should be included in each copy?

---

---

---

---

4. Do you have an idea for the front cover?

---

---

---

---

5. Have you ever contributed to the SpringDale Messenger?

---

---

---

---

6. How often do you go to the Messenger to look up an advertisers phone number?

---

---

---

7. Any other comments?

---

---

---

---

---

---

## Local Bees Local Honey Part 2

It is interesting that when ever I have a display of bees people always want to see the queen. The fascination with the queen is well based, as she alone creates life and also maintains the working hive.

At the start of a new hive there are 3 types of bee found:

- The worker bee which we see in our gardens is the major population within the hive.
- The drone which is the male bee. Occurs in small numbers depending on the time of the year.
- The queen bee of which there will only be 1.

In a normal hive in spring the queen lays eggs at a rapid rate in order to build up the hive to take advantage of the spring blossom. It is also the time in which

the hive will split in two, creating a swarm which will go off to look for a new home. During the spring lay, the worker bees pick about a dozen eggs and change the shape of the cell where the queen laid the egg creating a queen cell. This cell is extended down and looks like a stalactite. These eggs hatch in the normal 3 days after laying and the worker bees will feed the grubs on royal jelly only. This compared to a normal worker grub who will receive royal jelly for 3 days only and then worker food for the next 13 days. The worker bees will continue to feed the queen cells with royal jelly and the resident queen will stop laying. She will start to reduce her size so she will be able to fly.

At day nine the workers seal the queen cells and the grubs begin the transition

to bees. Within a couple of days of the queen cells being sealed the old queen will begin to leave the hive, the worker bees will gorge themselves on honey and with the queen and half the worker bees will leave the hive. This will be on a bright sunny day where the temp is above 20 degrees. The swarm will follow the queen to the nearest thing she can land on and the worker bees will then surround her and form a football shaped mass which will then rest while the scouts are sent out to find a new home. The average swam in the Leopold area is some where between 3000 and 5000 worker bees and one queen.

**Mark Cornell**

*Leopold Honey, Apiarist C593*

## Partners of Veterans Association...p.v.a.

A Geelong Branch of P.V.A. has been formed and meets quarterly or on a needs basis. P.V.A. operates at both state and national levels. Partners of veterans of all conflicts and those of peace keepers, are most welcome to attend these meetings.

The aim of this group is to provide information, action and support for the partners of veterans and their families, thereby filling a void left by other Service Organisations.

To meet with others in similar circumstances as oneself, provides comfort

and support in often very trying situations.

If you would like further information concerning P.V.A. re meeting places and times etc. contact Robyn Mikelsons(03 52 822370) or Wendy Bate(03 52 822723)

# Bellarine Business and Services Directory

All Community Organisations and Sporting Clubs – its time for us to print the next issue of the Bellarine Business and Services Directory. We'd like to ensure we have your correct details.

**Please complete the form below and return it to us as soon as possible.**

Community Organisation Name / Sporting Club Name \_\_\_\_\_

\_\_\_\_\_

Primary Contact and Position within group \_\_\_\_\_

Contact Phone number \_\_\_\_\_ Fax No \_\_\_\_\_

Email \_\_\_\_\_ Website \_\_\_\_\_

Postal Address \_\_\_\_\_

\_\_\_\_\_

Meeting Place and Time \_\_\_\_\_

Activity Classification (eg Service Club) \_\_\_\_\_

So please take a couple of minutes to complete this and then drop it in or send it in to **SpringDale Neighbourhood Centre PO Box 80, Drysdale, 3222. Fax 5253 3050, or drop it into 17 High Street Drysdale – across the Road from the Uniting Church.** (Please complete the SpringDale Messenger survey on the back of this too if you have time.)

## Cross word answers

**Across:** 1 Lineage, 5 Dodge, 7 Double-crossed, 9 Viewpoint, 11 Ararat, 12 Hangar, 14 Competent, 16 Well-nourished, 18 Basil, 19 Digests.

**Down:** 1 Ladle, 2 Nautical miles, 3 Alleviate, 4 Exceed, 5 Duo, 6 Distinguishes, 8 Dot, 10 Plaything, 13 Refund, 14 Cow, 15 Kudos, 17 Nil.



# SCC

chartered accountants

scott cleary & co



- ▼ Tax Returns
- ▼ BAS Returns
- ▼ Small Business Advice
- ▼ Investment Advice

**Belmont office - 5244 1622**  
1st FLOOR, 35-37 THOMSON ST, BELMONT  
**Drysdale office - CNR. OF SPRINGS RD. & HIGH ST, DRYSDALE**  
**www.scc.net.au**



## Drysdale Tyrepower

Say 'Hello' to your Tyrepower Pro.

- Tyres (Car, 4WD, Tractor & Truck)
- Wheels/Packages
- Brakes
- Exhausts
- Lube services
- Wheel alignments
- Mobile service unit
- Batteries
- Suspensions

Locally owned family business  
**25 Murradoc Road, Drysdale 3222**  
**Ph: 5251 5232 Fax: 5251 2074**

## NEEDLE SYRINGE PROGRAM

Are you using drugs?  
If so, then protect yourself from HIV and Hepatitis C.

Obtain clean fits from the Drysdale Community Health Service  
21 Palmerston Street, Drysdale.

**A CONFIDENTIAL service.**  
**No questions asked.**

# Bellarine Railway - Drysdale

## This month we look into the past .

Drysdale Station was opened in 1879 by the Victorian Railways. The station building incorporated a residence for the Station Master & his family and over the past 127 years, several railway families have called the station home.

The most notable family was the **SAYERS**. This popular family lived in and worked Drysdale Station from 1934 right through until 1966. Roy Sayers was the Head Track Ganger whilst his wife Lucy was Station Mistress. The couple raised a family and were very highly regarded by the people of Drysdale. An example of Lucy's generosity was when a local lady won a washing machine on a radio quiz in the 1950's. The lady lived on Jetty Rd which at the time lacked town water and indeed electricity. Lucy promptly offered to house the machine at the station which of course did have power & water. "Let the railways pay for it"! The washing machine 'crisis' was solved and many local families were able to take advantage of this modern wonder. The Sayers family tenure at the station ended upon Roy's untimely passing in 1966. Lucy moved elsewhere in Drysdale. Life was very quiet at the station by this time. The train 'service' was by then limited to one goods train per week, with only summer passenger excursion trains running

each year as well. These popular trains ran from Flinders Street & Ballarat and all of them stopped at Drysdale. Occasional charter trains also passed through from time to time.

The Stratton family took over for most of the final years of the original buildings life, which was sold in 1972 & still serves as a residence elsewhere in town. The station was again manned from 1989 upon completion of the current replica. Local people such as the late Bill Bailey, Henry Janson & yours truly have cared for the towns railway station since then. The current station 'family' in fact consists of 13 dedicated volunteers.

Whilst we are very grateful to **Betty Lithgrow** (nee Sayers) and her husband **Albert** for sharing some fascinating stories & photographs of life

at the station, there is still much to learn. If you are a descendant of any of the railway people of the Drysdale Railway of yesterday, please call in to the station or give us a bell.

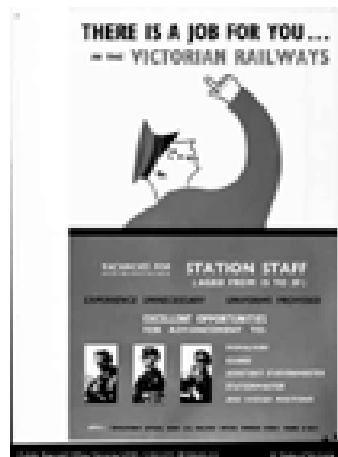
Until next time, take care

**Paul & Kate**

**Drysdale Historic Railway Station**

24 Hour Train Info Line 5251 3725

Visit [www.bpr.org.au](http://www.bpr.org.au)



"Station Staff Recruitment- 1955"  
(Photo- Public Record Office)



"Lucy Sayers- Drysdale Station 1941  
Note original goods shed/shelter on Lake Lorne shore"  
(Photo - Betty & Albert Lithgrow)



## Drysdale Motors

FOR ALL AUTOMOTIVE  
TUNING AND SERVICING

Specialising in  
**LPG DYNO TUNING**

Have your LPG vehicle Tuned on a "rolling road". If your car runs on LPG And hasn't been dyno tuned Then it hasn't been tuned.

- Roadworthy Testing
- Fuel Injector Cleaning
- Air Conditioner Servicing
- LPG Conversions
- New Car Servicing

**44 Murradoc Rd, Drysdale, 3222.**  
**PHONE: (03) 5253 1033.**

## The Bendigo way.

(You wouldn't want it any other.)

At Bendigo Bank we are here to serve you, not the other way around.

Everything we do is designed to make things easier for you. That is why we offer the convenience of banking over the phone and computer, as well as traditional friendly face-to-face service.

We also offer a full range of personal and business banking products and services.

For more information call into 44 Newcombe Street, Portarlington or phone 5259 3266.

Bellarine Peninsula  
**Community Bank** Branch **Bendigo Bank**



[www.bendigobank.com.au](http://www.bendigobank.com.au) Bendigo Bank Ltd, Fountain Court, Bendigo, VIC 3550. ABN 11 068 049  
178. AFSL 237879. (bb22971-v3) (7/06/2006)



# From the Garden Gate.

Are you enjoying your spring bulbs in bloom? Jonquils are finishing and daffodils are nodding their golden heads. Irises and roses are on their way, to greet us in all their lovely colours and scents.

Maybe you will, like me, hesitate to do too much new planting now, as water restrictions are so much more stringent. Watering at night is not the best option is it, especially for plants like roses?

So unless you really want to grow annuals and vegetables and are prepared to water them, you might decide to restrict your garden activities for this season.

You know well that native plants do not require much water.

I won't give you any planting advice this month. You can always go to the nursery to buy seedlings, if that is what you want.

## Here are some other things to do in the spring garden;

On warm days, take indoor plants outside to the patio and leave in a shaded area. Remove any yellowing lower leaves and begin fortnightly feeds of Thrive or Aquasol.

Gladioli and dahlias can be planted now.

Gently prune fuchsias and geraniums to encourage thicker growth.

Spot weeds with Zero or Round up if weeds create problems.

Weed, feed and regularly mow lawns.

Feed fruit trees now.

Pick bunches of your Spring flowers to put in the house or to bring pleasure to other people.

## Open Gardens in our area

**September 16-17th 2006**

"Hill House" Ceres. 10am - 4.30pm.

360 Wandana Drive. Ceres.

Mel. 450 J 10.

**September 23-24**

"Mooramong" Mooramong

Rd. Skipton. Mel. 626 H4

10a.m - 4.30p.m.

**October 21-22**

"Carlton Gardens".

11 Carlton St. Ballarat.

Mel. 609 A12

"Cameron House".

514 Humffray St. South Ballarat.

Mel. 609 A 12

"Birchwood".

6 Mt. Helen Drive. mt. Helen.

Mel611A1

(Admission to the above gardens is \$5.00)

**October 28-29**

"Ercildoune" Burrumbeet.

973 Ercildoune Rd. Burrumbeet.

Mel. 626 J3

## CliftonSprings/Drysdale Garden Club.

ANNUAL FLOWER AND GARDEN SHOW. SATURDAY NOVEMBER 4TH. Uniting Church Hall, Drysdale.

Garden Club Meeting. Monday September 18th U.C.Hall Drysdale. 7.30 p.m. ALL WELCOME.

Enquiries - Wendy Hebbard. (President). Ph: 03 52505545

# Barwon Water - Water Wise

## Stage 1 water restrictions in force

Stage 1 water restrictions are now in force in the greater Geelong region, including the Bellarine Peninsula.

The introduction of restrictions at this time will give our reservoirs a greater chance to recover before the hotter months.

Stage 1 restrictions are aimed at reducing external usage, particularly garden watering, window cleaning and vehicle washing, and will supplement the permanent water conservation measures already in place. They include:

- reduced garden and lawn watering on alternate days - manual watering systems can be used between 6am and 8am and 8pm and 10pm and automatic watering systems can be used between midnight and 4am on alternate days
- hand-held hoses fitted with a trigger nozzle, or watering cans or buckets can

still be used on gardens and lawns at any time on any day

- windows can only be cleaned using a bucket filled directly from a tap
- cars, boats and other vehicles can be cleaned using a high pressure water cleaning device, a watering can or bucket, or at a commercial car wash. A hand-held hose fitted with a trigger nozzle can be used to pre-rinse and rinse only
- hard surfaces and paved areas must not be cleaned unless in an emergency
- an application must be made prior to filling a new pool or spa larger than 2000 litres.

Stage 1 water restrictions will apply to the greater Geelong water supply region, which includes Geelong, the Bellarine Peninsula, Barwon Heads, Breamlea, Connemara, Mount Duneed, Torquay, Jan Juc, Anglesea, Moriac, Winchelsea, Birregurra, Forrest, Inverleigh, Bannock-

burn, Teesdale, Shelford, Lethbridge, Gheringhap, Meredith, Anakie, Lara and Little River (south of the river).

Restrictions will remain in force until further notice and breaches may incur penalties of more than \$2,000 for a first offence.

For further information or a full copy of the water restrictions schedule, please visit [www.barwonwater.vic.gov.au](http://www.barwonwater.vic.gov.au) or call the Water Restrictions Hotline on 5273 4488.

Also, for ideas and tips on how to be more waterwise in the garden, The Rotary Club of Highton, Barwon Water and the City of Greater Geelong are holding a Waterwise Gardening Expo on the weekend of 14-15 October at the Geelong Botanic Gardens from 10am-4pm.

Nicole Patterson  
Water Conservation Officer  
Barwon Water

## BELLARINE AUTO SERVICES

Quality Mechanical Repairs  
Tuning - Servicing  
LPG Conversion - EFI  
Tyres - Batteries - RWC  
Licensed Vehicle Testers

Mortimer St. Drysdale  
Proprietor: J. Pamplin

**Ph. 5253 1644**

## CONCEPT CAMPERS

Manufacturers and repairers of Annexes,  
Awnings, Tonneaus, Tarps, Horse Rugs,  
Boat Covers Custom Built Camper Trailers  
Caravan and Boat Storage  
Discount for senior citizens

**Phone (03) 5253 2569**  
61-63 Murradoc Rd. Drysdale.

**MORTIMER  
PETROLEUM**

**PETROL STATION &  
CONVENIENCE STORE**  
97 High Street Drysdale Phone 5251 2603  
Petrol, Autogas Bait & Fishing Supplies

**CAR WASH**  
Open 6.00am-10.00pm

# SPORTS REPORT

## Hawks miss final

Season 2006 has ended disappointingly for the Drysdale Hawks with the senior side missing the finals for the first time in eleven years. In a season which showed glimpses of brilliance, but all too rarely, the Hawks will pay the price of missed opportunities, which in the end cost them the chance of September action.

Injuries took their toll as they do with all clubs, but the loss of star full-forward Luke Maher was one the young Hawks simply could not cover. His absence exposed major flaws in the Drysdale forward line & made all supporters acutely aware of the big man's value to this team.

Despite the lack of on-field success

there were many positives to come out of season 2006. Coaches Chris Taylor & Joe McLean will have learnt much in their debut season in charge, while young players Kieran Flynn, Cody Gibb, Justin White, John Kendall & John Keneally will all benefit greatly from their experiences this year. Grant Foot & Simon Nelis have shown sparkling form all season & proven they both have plenty of good football left in them, while Reece Holwell & Julian Hildebrand have established themselves as genuine stars.

Although the seniors have missed the finals, the club will be represented at both reserves & U18

level come September. The reserves have overcome some ordinary mid-season form to be peaking at the right time, while the U18's have continued to surprise with many young players exceeding expectations. Look for a big showing from both teams & maybe a surprise premiership.

As usual the Drysdale Recreation Reserve will be at its' absolute best when it hosts both the 2nd semi-final & grand final. All sports fans should make the most of this opportunity to see some fantastic football & support our local teams in what should be a sensational finals series. Good luck to all participants & **GO HAWKS**

## Clifton Springs Tennis Club Inc.

### Contacts

- Seniors – Alison Ph 52512543
- Juniors – Anna Ph 52512285
- Night – Bruce Ph 52505427
- Ladies – Debbie Ph 52532735
- Coach - Mark Ph 52414089  
(Mobile no. 0416288956)

### Try Tennis Time

With new Junior Programs, Night tennis social competitions, our Free Open Court night on 18/9, 7.00pm to 9.00pm. & a new Veterans program, we have something for everyone, all ages & all abilities. Give tennis a try! Call our contacts for information. New players are welcome to join us for a large range of programs, learning opportunities & social events

Time to think about Summer

We are preparing now for the Summer season. It's time to put your name down if you are thinking about playing Saturday Seniors, Juniors or Night competitions.

Congratulations Midweek ladies

Congratulations to our Section 11 Midweek ladies teams who finished premiers in their grade of the Bellarine Association competition. Now in the new season we have 6 teams in the competition so good luck to all our Tuesday teams. If you are thinking about Tuesday ladies tennis, give Debbie a call on 52532735. We still need emergencies & there are a range of grades to suit all standards. It's social, fun & fitness.

Saturday Pennant

Nearing finals of Winter Saturday season. Our 5 Senior teams are all in the

final four & playing well. Congratulations to our Section 4 men's team who are currently undefeated & a force to be reckoned with. Our newest Section 12 team, are on top of the ladder & having lot's of fun. Go teams!

All of the Junior teams are having success with everyone being competitive and many teams are in the finals Great tennis from all our juniors.

Social Scene

Next on the calendar is the Wine Tasting on 26/8. Coming up is our Bus Shopping Trip on 16/9. We invite everyone to come along & make the most of bargains. It's a great opportunity to knock off some Christmas shopping. (How can it be Christmas already!) Non members are welcome so give Alison a call on 52512543.

## Naturopath

*Lisa Taylor N.D. (A.N.T.A.)*

Drysdale Community Health Centre  
21 Palmerston street

Monday & Thursday  
appointments ph: 5251 2291 AH: 5251 2544

Also available at Carmoor Clinic, 343 Moorabool St.

Wednesday & Friday: Ph 5223 2616

Specialising in women's and children's health using  
Herbal, Homoeopathic and Soft Tissue Therapies.

## MAGGIE GOVE N.D.

Bowen Therapist  
& Naturopath

Member of A.N.T.A.

**Drysdale: Clinic 03-5251 1188  
Ah 03-5253 2230**

(Rear of Elegant Profile)

## DRYSDALE TENNIS CLUB

SUMMER SEASON 2006/2007  
(COMMENCING OCTOBER 2006)

PLAYERS WANTED

JUNIOR & SENIOR

CONTACT: CAROLINE JOHNSON  
(JUNIORS)

PH: 52513532

ALISTAIR GORE (SENIORS)

PH: 52512653

## BIG

Things are happening at Allpoints.

Not only is our **Sales Success** on the increase, but also we have some exciting news in the wind.

The times they are a changing and we are constantly looking for new ways to improve our results for our clients.

Look out for the signs of more good things to come.



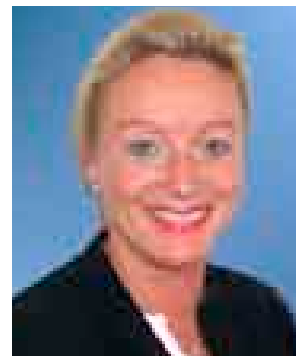
**Phil Cumming**  
0408 599 232  
Residential Sales



**Jackie Webb**  
0417 552 456  
Residential Sales



**Kerry Hardy**  
0412 105 739  
Residential Sales



**Prue Street**  
0400 030 729  
Residential Sales