

The SpringDale Messenger

Your Free
Community
Newspaper

Compiled and published by the SpringDale Neighbourhood Centre Inc A002916V

Circulation 4,500

ABN 21 404 220 267

Vol 16 No. 10, November 2006

Ph: 5253 1960 Fax: 5253 3050 email: messenger@springdale.org.au www.springdale.org.au

Certificate 3 in Aged Care Graduates

Congratulations to the 17 local people who have just completed a Certificate 3 in Aged Care held at SpringDale Neighbourhood Centre from May to October. The course was a great success an excellent partnership between GATE, SpringDale and the students. We look forward to running another course next year during similar months May to October. The course will run for 2 days a week, at this stage Wednesday and Thursday are the days for the course. Well done - we look forward to hearing of your next successes. The SpringDale Team.



**DRYSDALE
VILLAGE
HARDWARE**
(03) 5251 3267

YOUR HANDY
HARDWARE
STORE

THE ARCADE
HIGH STREET
DRYSDALE, 3222.

Westpac

- OPEN SATURDAY
- HOME LOAN CENTRE
- GOOD TERM DEPOSIT RATES

CONTACT: WAYNE, LISA,
BEV, PAM OR MICHELLE
5251 1624

**SHOP 9, SUPERMARKET
COMPLEX, DRYSDALE**

The SpringDale Messenger

The SpringDale Messenger is compiled by the SpringDale Neighbourhood Centre Inc. A0024916V,
17-21 High St. Drysdale.

Postal: P.O. Box 80, Drysdale, 3222.

All editorial and initial advertising enquiries to SpringDale Neighbourhood Centre

Phone: 5253 1960

Fax: 5253 3050 or email

messenger@springdale.org.au

www.springdale.org.au

All contributors are asked to provide their articles on disc (Microsoft Word) or email it for ease of processing. Contributions are still accepted as written copy but need to be submitted in the week prior to our copy deadline.

Next Publication:
December 2006

Copy deadline:
6th November, 2006

Distribution:
24th November, 2006.

Views expressed in this newsletter are not necessarily the views of the Publisher, the SpringDale Neighbourhood Centre Inc.

Advertising:

To ensure publication in a specific issue, copy must be submitted prior to deadline.

This includes both new adverts and alterations to an existing advert.

Layout and Design of this issue by Pagination Design Services, Geelong.

Contact at Pagination Design Services, Geelong is Anthony Zavaglia.

Community Calendar

SpringDale Community Calendar – a SpringDale Neighbourhood Centre initiative to support the whole community.

This calendar will enable you to quickly look up what is happening over the next couple of months (maybe longer) in our area. There will be a calendar for the next 12 months put on our website—accessible to all groups to help when planning events. If you would like to place an event on our calendar on the website and also in the next couple of issues of the SpringDale Messenger—then please email, write or ring the details of the event through to the SpringDale Office.

2006

- | | | |
|-----|-------|--|
| Nov | 2 | Pelargonium & Geranium Festival, Old Mill, Portarlington |
| | 4 | Clifton Springs/ Drysdale Garden Club, Spring Flower Show |
| | 4 | Free Travel Expo 10-3 at Potato Shed |
| | 7 | Melbourne Cup Luncheon at Clifton Springs Golf Club, supporting the Drysdale Fire Brigade, 10.30am |
| | 13 | Business Network Breakfast at SpringDale 7am |
| | 14 | Senior Citizens trip to Victoria Market |
| | 15-18 | Peninsula Players "A Handful of Friends" |
| | 17 | Drysdale Ladies Day View lunch at Clifton Springs Golf Club. Function Room 10.30am |
| | 19 | Drysdale Community market 9-1 |
| | 24-26 | Queenscliff Music Festival |
| | 26 | Portarlington Market |
| | 28 | Senior Citizens lunch at Clifton Springs Golf Club |

- | | | |
|-----|----|---|
| Dec | 3 | Crime Writers at The Ol' Duke 2-4pm |
| | 5 | SpringDale Singers Open Day 1.30-3.30pm |
| | 6 | 7.30pm Clifton Springs Pre-School AGM - Guest speaker will be Natasha Parkin, specialist on anaphylaxis |
| | 11 | Senior Citizens Christmas lunch |
| | 17 | Drysdale Community market 9-1 |
| | 24 | Portarlington Market |

2007

- | | | |
|-----|-----|---|
| Jan | 6,7 | Book sale St. James Anglican Church Drysdale |
| | 24 | Wed, U3A Enrolment Day at the Civil Centre, Reynolds Road, Belmont (behind Barwon Health) |
| Feb | 19 | Adrian Mannix Community Service Awards Dinner |
| Mar | 11 | Bellarine Agricultural Show – Portarlington Recreation Reserve |
| | 17 | Bunyip Festival at Drysdale PS |

.....There's room for your club's information night, membership drive day, special event to be listed here - please send the information to SpringDale for inclusion in this section.

Max Simmons PhD (Flinders)
Health and Counselling Psychologist

- * Sleep difficulties
- * Persistent pain
- * Anxiety & depression
- * WorkCover and TAC injuries
- * Substance use
- * Life skills

27-29 High Street, Drysdale, Vic. 3222
Phone: (03) 5251 2958 Mobile: 0414 833 290
email: max.simmons@datafast.net.au



The Drysdale...

COFFEE • LUNCH • DINNER

OPEN 7 DAYS

Lunch and dinner
Reservations: 5251 2301
Sports bar • TAB
• Kids Playground
• Alfresco beer garden

DRYSDALE HOTEL High Street, Drysdale.



Drysdale Physiotherapy & Sports Injury Clinic

- Spinal ■ sports ■ Manipulative ■
- Arthritis ■ Workcover ■ TAC ■ Vet Affairs ■
- Hydrotherapy ■ Exercise Rehabilitation ■

Peter Terry MAPA, MPAA
and associates

Ph. 5251 2958

27 - 29 High Street, PO Box 179, Drysdale 3222

NEWS FROM SPRINGDALE NEIGHBOURHOOD CENTRE

Dear Friends

Isn't the year just flying by ! Last month we were lucky enough to host a meeting of the Minister for Small business Andre Haermeyer and a number of business people from the Drysdale / Clifton Springs / Bellarine area. It was interesting to hear about the concerns of small business and to exchange information.

Our Occasional Care area continues to provide families in the area with child care options as needed. If you are thinking of using our child care next year – why not ring and book in to visit and maybe even workout which morning session you might like to keep as a morning for you to get things done – be it messages, Doctors appointments, the shopping or just to do something for you.

The SpringDale Messenger continues to be well support by all our advertisers but for them to continue to support us – we hope you avail of their services and please let them know you saw their ad in the Messenger. We also encourage community organizations to contribute articles and also to publicize their events in the Messenger please contact SpringDale if you'd like more information.

We still have some courses yet to start a First Aid Level 2 and CPR course will commence on Saturday

11th November and the second day of the Level 2 is on Saturday 25th November, we have an eBay sellers course scheduled for 2 Wednesday evenings in November.

A large number of people now come weekly to SpringDale to prepare and print the resumes or letters or emails or just to browse the internet. We continue to strengthen links with St Vincent de Paul society. Our Business and Services directory is almost ready to be printed and distributed before Christmas. If you have missed getting a business in the directory please register your interest now for the next edition.

SpringDale has recently welcomed a line dancing group to our list of the things that happens at SpringDale regularly. Our chess, mahjong, scrabble, jigsaw and meditation groups have all welcomed new members recently new members are always welcome to join any of our groups – our life drawing class

does currently have a waiting list as the group is to its maximum at the moment for the size of the room that they meet in.

Many reports are being prepared for the end of the year and much planning is happening for next year. We have already scheduled a Certificate 3 in Aged Care to commence in May 2007 – please register for the course as soon as possible. We also have a few names of people wishing to do an Integration Aide course please register your interest in this.

As this is the last issue prior to the State Government election on Saturday November 25th we have included 150 words from each of the candidates that is known to us at this time.

**Hope you have a great month
- Anne Brackley Coordinator on
behalf of the whole team at Spring-
Dale Neighbourhood Centre**

Family Law Worries?

Come in for a *free* chat

RISTEVSKI

LAWYERS

1 High St., Drysdale
(old Post Office) Ph: 5251 3453

FOOT HEALTH CARE FOR ALL AGES



**Michael A. Nicol
Sue Partridge**

General Consultations
Diabetics and High Risk
Orthotic Therapy
Nail Surgery
Veterans' Affairs
TAC and Work Cover

DRYSDALE

5251 2958

27-29 High St. Drysdale

SpringDale Facilities

Personal use of Computers

Internet Access

Photocopies

Faxing

Laminating

**SpringDale Messenger in
large format**

Room Hire

Tables and Chairs for hire

Crockery of hire

**Reasonable rates and cheaper
rates for members**

Drysdale Primary School

What an exciting term!

Drysdale Primary School students get to experience a lot of extra curricular activities both within the classroom and outside in the community this term.

The Prep students go to the wild and wonderful Werribee Zoo, where they will track down a lion by following footprints around the zoo. They also take a magic safari bus into the jungle to get a close look at the stripy zebras, tall giraffes, friendly hippopotamuses and mean rhinoceroses.

This term the grade ones learn all about African animals. At the end of the term they then go to the magnificent Melbourne Zoo to look at all the amazing animals that they have learnt about. They also have tadpoles and silkworms in their classrooms, so that they can watch their lifecycles.

The grade two students start the term with their swimming program. They then study Australian animals and the Australian environments. As part of this the children make an Australian animal piece of artwork which they wear whilst presenting a formal speech on video about their particular animal.

The grade three students have begun their gold theme in preparation for their first overnight camp to Sovereign Hill. Each year the grade threes have to dress-up in 1950's clothing for a day. The classroom is transformed into a simulation of an 1850's classroom in which the children do things like cop-plate writing etc.

This term grade fours are studying the Shipwreck Coast. They are looking forward to their camp at Kangaroobie where they will participate in farming

and other adventurous activities as well as visiting the Maritime Village at Flagstone Hill in Warrnambool.

As part of Bike Education focus grade fives will be going to the Maldon Bike Education camp for five days. This camp involves daily bike rides around the area as well as lots of other fun camp activities.

Grade sixes goes to I-Max and Channel 9 as part of their Social Studies program. At I-Max they get to watch a 3-D movie about underwater sea creatures. At Channel 9 studio they experience behind the scenes taping of the show 'Temptation'. They also get to go on a camp to Canberra where they visit Parliament House.

Danielle Thompson
(Drysdale Primary School)

The SpringDale Singers.

The singers are still enjoying themselves each week, and usually welcome one or two visitors who have dropped in to enjoy the session with them, or to find out if this is something that they would like to do.

This un-auditioned choir of very mixed musical experience (or none), has around forty members, a number more than enough to be able each week to sing in full harmony, so has not had to

advertise for more members.

Despite this, we welcome all who wish to sing and the hall can hold up to a hundred people.

Everyone who would like to benefit from the pleasure of singing in company can become a part of this happy group.

The session each Tuesday afternoon is at SpringDale. While the choir does not give concerts, in December

it is specially inviting anyone with the remotest interest in choral music to come as guests at its open day. No charge, just an opportunity to see and hear what happens each week, enjoy some good music, and meet the singers over a cup of tea.

Tuesday 5th December from 1.30 to 3.30 pm in the Community Hall, SpringDale Neighbourhood Centre, High Street Drysdale.

Delivering PC Solutions
We come to you!

COMPUTER SALES & REPAIRS
BROADBAND HELP, VIRUS REMOVAL, UPGRADES, CUSTOM BUILT PC'S, GENERAL PC MAINTENANCE
CALL STEVE AT DPCS, BELLARINE PENINSULA

Ph: 03 5253 2558
Mob: 0405 523 606

**Quality Butcher**
PETER HOMMELHOFF
HOMMY'S
QUALITY MEATS
For something new and different
16 High Street, Drysdale 3222.
Phone: 5251 2270


chartered accountants
scott cleary & co



 **Tax Returns**  **Small Business Advice**
 **BAS Returns**  **Investment Advice**

Belmont office - 5244 1622
1st FLOOR, 35-37 THOMSON ST, BELMONT
Drysdale office - CNR. OF SPRINGS RD. & HIGH ST, DRYSDALE
www.scc.net.au

Clifton Springs Primary School

Our school students, staff and parents have been working hard during the past weeks in preparation for our Annual School Concert. This year our Concert will be held in the Drysdale P.S. Hall on Thursday 26th October and our theme will be Clifton Springs Primary School Saves the World. This event promises to be a wonderful night's entertainment with lots of music and movement and will be great fun for all the family.

In the classrooms our students are learning about The World Around Us in our integrated curriculum. In the Prep – 2 classes they are discovering what makes up their local community, who are the special helpers within that community and how we can use our leisure time. In the 3 – 4 classes they are learning about Australia, its geography and what special places there are to visit in Australia. In the 5 – 6 classes they are discovering how our country is governed, what is a democracy and how every person has a part to play within that democracy.

On the sporting field we have been very proud of our students as our Athletics team performed very well at the recent Zone Athletics. We also had a group of students play interschool golf



and cricket and are about to become involved in a summer sports program for our senior students.

Other activities happening this term will be our Bike Education Program, swimming for Grades 3 & 4 students and Jump Rope for Heart.

The school grounds are looking wonderful with our new fitness stations, playground equipment, running track and new basketball and netball courts. The bottom oval has been re-sown and we hope will eventually provide a wonderful grassed surface for sport and play.

Drysdale ladies day VIEW club

Our next lunch meeting is due on Friday 17 November (one week earlier than usual), in the Clifton Springs Golf Club Function Room, at 10.30am. If you would like to join an active, friendly group (part of a nation-wide network), meet interesting people & listen to a varied range of Guest Speakers drawn from our community, then phone Christine on 5251 1127 or Gloria on 5253 3256.

We support The Smith Family's work in assisting disadvantaged school children, with its Education For Life Program, which includes over 400 children in this region.

Painting?



Wallington
MITRE 10
Home&Trade
All the help you need

For the
BIGGEST Paint
and Accessories
store on the
Peninsula.....

Corner Grubb Road
and Bellarine Highway
Wallington
Ph: 5250 2855

OPEN 7 DAYS

Weddings
Commitment Ceremonies and
Special Family Occasions

Local & professional Videography
and Post-production Services
0407 531 764



OPEN 6 DAYS
(Closed Tuesday)

- Dining
- Study
- Bedroom
- Entertainment

Huge collection of furniture and homewares,
cane-ware, nautical & unique giftware.

Floor stock or made to measure.

'Country atmosphere with old fashioned service'

16 Collins Street DRYSDALE (Next to Hotel)
Phone / Fax: (03) 5253 1516

Drysdale Senior Citizens Club.

We were very disappointed that we had to cancel our trip to Burrumbeet in September as couldn't get the numbers to fill the bus. We hope our text trip will be a success.

Our exercise group is without a teacher and they are not happy. We are trying to get another one but they are very hard to find, but we will keep trying.

The following are our upcoming events, so you can put them in your diaries.

Monday November 6th we will have Bingo and trading table. Eyes down at 1.15pm. Everyone is welcome so come along and have some fun.

Tuesday November 14th we have a trip to the Victoria Market and then on to the chocolate and nut factories. This is a good way to do some Christmas shopping. The cost is \$17.00, but you have to buy your own lunch. Once again everyone is welcome. You don't have to be a member.

Tuesday November 28th we are going to Clifton Springs Golf Club for lunch. If you have no transport let us know and we will arrange something.

Monday December 11th is our Christmas lunch. We have a lovely day planned with a two course lunch and entertainment, nibbles and lots of prizes. So we hope to see you all that

day. This is for members only.

Watch Town by Town in the Echo every week for information about what we have coming up.

We have had a lot of members off with colds and flu, so we hope it won't be long before we see you all back again. To the members in hospital we wish you a speedy recovery.

We can still take some more new members, so please come up and see what we have to offer you are most welcome.

President: Esther Lornie

Secretary: Mary Hose

Phone no: 5251 2983

Ladies Probus Club of Bellarine Inc.

I am so pleased the Winter weather is past but according to reports the Summer season is to be hotter, dryer and we are in to a real drought situation. We are busy planting native plants and succulents to limit the watering of the garden.

The September speaker was Jonnie Mander, who spoke of Guides Homes around the world. It was very interesting to learn of other countries ways of accommodating visitors when staying for conventions, in Switzerland, Mexico, India, and England. Jonnie brought photos of these places and also a multicoloured Mexican blan-

ket. A vote of thanks was given by a member who has been in the Guiding movement for 70 plus years and has enjoyed every minute of it.

Our committee took a trip to Colac and enjoyed the day. The driver was the husband of a member and he did a good job, so we arranged to take the bus to D.F.O. Essendon. We enjoyed the day and could not fail to be amazed at the number of shops. Plans for more trips are in progress. Our next day out will be to our own Court House in Drysdale where its history plus a guided tour will take place, followed by a light lunch at Confessions.

I report with sadness the passing of another of our foundation members. Ruth Hill died in hospital on September 9th. Her contribution to many associations to which she belonged and who received her dedication and expertise will be greatly missed by all.

We continue to attend the group activities, Mahjong., Canasta, Scrabble, Craft and Chat.

Yours in friendship,
Iris (Liz) Tolton.



Soul Revival
Natural Therapy Centre

Reflexology	Reiki healing
Massage	Weight Loss
Kinesiology	Therapeutic touch
Crystal Healing	Ear Candling
Organic Skin Care	Tarot Readings

TERM 4 YOGA & MEDITATION
Spaces available

Newcomb Street, Portarlington 52591815



Drysdale Tyrepower

Say 'Hello' to your Tyrepower Pro.

- Tyres (Car, 4WD, Tractor & Truck)
- Wheels/Packages
- Brakes
- Exhausts
- Lube services
- Wheel alignments
- Mobile service unit
- Batteries
- Suspensions

Locally owned family business
25 Murradoc Road, Drysdale 3222
Ph: 5251 5232 Fax: 5251 2074

William Sheahan Funerals

incorporating



Drysdale & Peninsula
Funeral Services

5251 3477 - All hours

Murradoc Road, Drysdale
"Committed to Caring"

Bellarine Railway - Drysdale

Well, our 'Friends of Thomas' weekend was a huge hit for everyone! Despite some very 'English' weather at times, local families enjoyed all the special activities & of course the very special rides in all of our trains - and the 'troublesome trucks'!

Another even bigger event is planned for the first quarter of 2007- watch this space!

As we rapidly approach the silly season, some reminders.

- * The railway runs EVERY Sunday, Tuesday, Thursday & Public Holiday. You can hire your own train to run any time you want.
- * We can cater for virtually any function - dining cars, dance & bar cars are available. The railway has a liquor licence.
- * The charter book is filling fast, so if you are thinking of a value for money function with a unique twist, call our Marketing Officer during business hours on 5258 2069.

Other B.R News.

Ex South Australian loco 'T 251' is progressing rapidly with the frames reunited with the wheels. Boiler work and a new tender tank are next.

Tasmanian railcar 'DP28' is returning to service which will enable us to run two railcars coupled together giving a great increase in capacity.

Track- lots of work here with the tamping machine being returned to service which has made short work of many 'line & level' problems. Special mention to Joe Atkinson. The track crew led by Rupert Capper & Scott Tribe have also replaced many sleepers.

Stations - Mike Yeomans has somehow managed to single-handedly 'tame' the infamous 'turntable' paddock on Station Street. Planning is underway to landscape this parcel of land & open it up more for public access.

Matt, Daniel & Caitlin Kenny have carried out repainting works at Suma Park Station.



"The Fat Controller at Queenscliff"

TV - The railway appeared on 'Coxy's Big Break' on October 1st.

SPECIAL NOTICE - NO TRAINS WILL RUN TO DRYSDALE ON THE LAST SUNDAY IN NOVEMBER, this is due to the train being fully booked for Queenscliff Music Festival.

Until next month, take care

Paul & Kate

Drysdale Historic Railway Station

24 hour Info Line 5251 3725

Visit: www.bpr.org.au

Clifton Springs Pre-School

The Clifton Springs Pre-School is set for the last term. There will be a lot of sad children when the year draws to an end. Memories of the third term are still being talked about. The Wild West Action Show was fantastic, with all the children having a turn at holding a big python, crocodile, lizard, frog and other creatures. It was a huge highlight for everyone. Our local CFA dropped in to show us their big red fire engine. All the children got to climb aboard and hold the hose (giving the grounds a good water). Our wonderful teachers Tanya and Julie make every day a special one full of inspiration, adventure and education. Here's to another fantastic Term.

Contact the Kinda on 5251 3158 or drop in to see us at 21 Central Road.

FREE TRAVEL EXPO

• Lots of fantastic offers and info • 1-Day only!
• 2007 Earlybird savings! • Local venue

Saturday, 4th November, from 10am to 3pm

at **the Potato Shed**, near Bellarine Secondary College, Peninsula Drive, Drysdale

EXHIBITORS INCLUDE: • AAT Kings • Adventure World • ANZCRO • APT • Concorde International • Coral Seas • Discover Asia • Explore Holidays • Globus & Cosmos • Grand Pacific • Harvey World Travel Insurance • Harvey's Choice Holidays • Helen Wong's Tours • Insight Vacations • Newmans Holidays • P&O Cruises • Peregrine Adventures • Pinnacle Tours • Qantas Holidays • Russia & Beyond • Scenic Tours • Ski Express • Tasmania's Temptations Holidays • Tempo Holidays • Temptation Tours • Trafalgar Tours • Travel Indochina • Travelex •

PLUS: 10 FREE 30 minute Info Sessions

START TIME	EXHIBITOR	SESSION INFO
10:30am	Scenic Tours	Europe Touring & River Cruising
11:15am	Trafalgar Tours	Britain and Europe
12 noon	Peregrine Adventures	Africa and South America
12:45pm	Trafalgar Tours	Britain and Europe
1:30pm	APT World Discoveries	Canada and Alaska

Please register in advance (limited seating) to reserve your free seat!

START TIME	EXHIBITOR	SESSION INFO
10:30am	Temptation Tours	Egypt and Morocco
11:15am	Insight Vacations	Britain and Europe
12 noon	Globus	Britain and Europe
12:45pm	Insight Vacations	Britain and Europe
1:30pm	Newmans Holidays	New Zealand

FOR MORE INFORMATION, CONTACT US TODAY:
Drysdale • Phone (03) 5251 1125
 Shop 2A, 6 High Street, Drysdale 3222
 Email: drysdale@harveyworld.com.au

Ocean Grove • Phone (03) 5256 1888
 Shop 13 12/20 Kingston Downs Drive, Ocean Grove 3226
 Email: oceangrove@harveyworld.com.au

HARVEY
world travel
The Travel Professionals

Wiett Home Maintenance and Handyman Service

Qualified tradesman,
35 yrs experience
quality work, competitive price.
No job too small. free quotes

Ph: 5251 5061
Mob: 0408 324 804

ALINGA

LANDSCAPE DESIGN

Plan your garden to make it part of your home!

- On site garden consultations
- Expert advice in plant selection
- Computer generated plans and images of your new garden

Neil Muhlthorn
Ph: 03 5253 1299 email: alingsalandscape@gmail.com

Drysdale Ladies Probus Inc.

The September meeting of the Drysdale Ladies Probus was a very happy affair full of fun and laughter. Members were asked to wear a favorite pinny (apron) with a story attached to it.

During the usual friendship time before the meeting begins, members shared stories and admired each others aprons. This happy chatter continued at the morning tea break.

An important feature of the meeting was the farewell to June Shear-smith. June was a founding member of the Drysdale Ladies Probus and has taken an active and leading role in all facets of the club as follows: June joined Probus in 1990 as an inaugural member, first on committee in 91/92 as Visits and Entertainment

Co-coordinator, 92/93 was President elect, 93/94 President, 94/95 ex-officio, 97/98 sec/public officer, 2001/2003 bulletin/publicity.

In Oct 90 June organized our club's first needlework meeting & it is still going strong.

In November 92 she arranged a visit to our first friendship day-Probus in the park in Queenscliff.

In Nov 97 was involved in design and creation of our club Banner, in 98 formation of Patchworkers (now Bits & Pieces) and also formed our Ladies Choir, The Twilighters.

Although emotional, June's farewell speech included some funny stories about happenings in the club over the years. As leader of the 'Bits and Pieces Patchwork' Group, she asked members of this group to bring along their recently completed cushions.

These cushions followed the same basic pattern, but they showed each persons style and involved many newly learned skills. Morning tea was held in June's honour. Along with a special



friend Margurite Edgar, June made the first cut into the beautifully decorated, special farewell and thank-you cake.

Although sad at leaving her home in Clifton Springs, June is looking forward to moving closer to her family in Queensland. We will all miss you June, good luck, good health, and happiness in your new home. Thank-you June for your many years of service to the Drysdale Ladies Probus.

Yours in friendship
Lesley Jones

Have you ever thought about working in the Home & Community Care Industry?

Free training program, no experience necessary.

The Public Tenant Employment Program in partnership with The City of Greater Geelong are running a 4 week training program, designed to prepare people for employment & traineeship opportunities within the Home & Community Care Industry.

Community Care Workers perform

general household duties and other tasks with the aim of assisting people to remain living in their own home.

To be eligible you will need;

- To live in Public Housing
- Be fit enough to carry out the work
- Have a commitment to working in the Community Services Sector

The course is free and goes for 4 weeks,

including a 2 week work placement.

Most people who successfully complete this course will be assisted into employment. Course commences November 20th.

If you are interested in a career in this field, please ring Antony at the Public Tenant Employment Program on 90965774 or 0404049464.



Drysdale Motors

FOR ALL AUTOMOTIVE
TUNING AND SERVICING

Specialising in LPG DYNO TUNING

Have your LPG vehicle Tuned on a "rolling road". If your car runs on LPG And hasn't been dyno tuned Then it hasn't been tuned.

- Roadworthy Testing
- Fuel Injector Cleaning
- Air Conditioner Servicing
- LPG Conversions
- New Car Servicing

44 Murradoc Rd, Drysdale, 3222.
PHONE: (03) 5253 1033.

The Bendigo way.

(You wouldn't want it any other.)

At Bendigo Bank we are here to serve you, not the other way around.

Everything we do is designed to make things easier for you. That is why we offer the convenience of banking over the phone and computer, as well as traditional friendly face-to-face service.

We also offer a full range of personal and business banking products and services.

For more information call into 44 Newcombe Street, Portarlington or phone 5259 3266.

Bellarine Peninsula
Community Bank® Branch Bendigo Bank



www.bendigobank.com.au Bendigo Bank Ltd, Fountain Court, Bendigo, VIC 3550. ABN 11 068 049 178. AFSL 237879. (bb22971-v3) (7/06/2006)

YOUR LOCAL REPRESENTATIVES

Small Business Roundtable

It was great to have the Minister for Small Business, Andre Haermeyer, at SpringDale recently to hold a Roundtable session with representatives of our local small businesses.

The Roundtable was an opportunity for them to meet the Minister and raise directly with him their ideas and the issues confronting them. There was wide ranging discussion and a chance to share experiences and information. Thanks and congratulations to Anne Brackley and all those involved at SpringDale for doing such a great job in hosting the Roundtable. It was an important and useful session for the business community and that has certainly been reflected in the positive feedback from participants.

Coastal Spaces Landscape Assessment

I was delighted to join the Planning Minister, Rob Hulls, at the official announcement of the release of this important Study.

The Coastal Spaces Landscape Assessment Study: State Overview Report, to give it its full title, provides a detailed record of our precious coastline thanks to participation by communities around the State.

The Study highlights Character Areas

on the Bellarine Peninsula, including:

- Lake Connemara Flats, extending from Breamlea in the south to Barwon Heads in the east and Point Henry in Corio Bay
- Lonsdale Lakes, between Point Lonsdale and Ocean Grove in the Swan Bay catchment
- Landmark landscape features including The Bluff at Barwon Heads.

The information collected in the Study will be used in local planning schemes to ensure that the significant local landscape values are taken into account in relation to any future development applications.

As part of the Coastal Spaces Strategy, the Bracks Government has committed \$600,000 to better manage coastal landscapes. Details are currently being finalised with local councils and then the findings of the Study will be implemented into local planning schemes.

The Study involved a great partnership between councils, local communities and the Government. The results will help us better manage and protect our coastal landscape in the years ahead, for the benefit of local residents as well as visitors and holiday-makers.

Country Action Grant Scheme & Victalent

These two grants programs are now

open for community sport and recreation organisations.

The Country Action Grant Scheme will be known to many of you already. It provides grants of up to \$5,000 to increase the capacity of community sport and recreation organisations in rural and regional Victoria. The type of projects considered include:

- Training for coaches and officials, administration staff and committee members;
- projects to improve the efficiency of the organisation
- initiatives to increase community participation in the organisation.

Victalent provides a \$500 travel assistance grant to assist athletes over 12 years of age (exceptions may be considered in gymnastics), coaches, officials and teams with travel costs associated with training and competing.

The closing date for projects commencing before 30th June, 2007 is 27th October, 2007. As always, please don't hesitate to contact me if you need more information or assistance.

Until next time

Lisa Neville MP

Member for Bellarine.
5248 3462.

Councillor Tom O'Connor said contractors have begun work on sealing around 120 metres of the formerly gravel road leading down to the Clifton Springs Boat Harbour. Wellam Constructions are carrying out the work on road sealing, kerbing and channelling and construction of the footpath.

Cr O'Connor said the works would result in vastly improved access to the Boat Harbour, both for vehicles and for pedestrians. Improvements to the Drysdale Recreation Reserve are continuing. Fencing around the market site at the reserve has been completed in time for the market to begin

John Merlo, City of Greater Geelong

Bellarine Window Clean

Why spend hours of backbreaking hard work trying to clean your windows?
Let Phill from Bellarine Window Clean give your windows the professional touch.
Our unique cleaning system with attention to detail,
Guarantees you a "Crystal Clear" finish every time.

***Special Spring Clean OFFER!**

Whole House Outside Window Clean for \$69.00*

Phone Phill Harty today on 0412 19 55 22

*Offer applies to single story homes only.

 **Studios & Gallery**
Quality works by Local Artists

Classes commencing term 4:

- | | |
|---------------------|--|
| * Life Drawing | } small classes
experienced
teachers |
| * Yoga - Relaxation | |
| * Meditation | |

40 Geelong Rd, Portarlington 5259 1123
5257 1073

Clifton Springs Golf Club

Play by the Bay

Phone 5251 3391



GOLF MEMBERSHIPS
ONLY \$383.00 FOR 8 MONTHS
PHONE 52513391 FOR DETAILS



Green Fee Players Welcome
\$22.00 for 18 holes
Magnificent Couch Fairways
Bookings 5253 1488



NEW YEARS EVE
AT THE SPRINGS
FEATURING THE J BAND



\$60.00PP INCLUDES MEAL AND
ENTERTAINMENT

BOOKINGS ESSENTIAL PH 5251 3391

Also All Categories Members Draw + Regular Raffles
Every Friday and Saturday Night
Pots for glasses prices **Fantastic Views**

Try our Fabulous Lunches
Prices from \$6.50
Monday – Friday only



Sunday to Thursday Evening



\$5.50 Meal Deal

Buy one main meal off our regular menu and
receive another of equal value for
only \$5.50

on presentation of this coupon

***Not valid Public Holiday or Long Weekends**

Valid until Nov 30th* 2006

Conditions Apply

The importance of being still

Spring and the coming summer tend to invoke activity, and this is a wonderful thing. However, sometimes, in the excitement that the warmer weather brings, we can forget the importance of indulging in a moment of stillness.

In order to maintain equilibrium and ensure that we do not overburden, we need to remember to stop periodically and refresh. There are many ways that you may choose to do this, but here are a few suggestions.

Meditation

Possibly the most popular form of finding stillness is meditation. If you have never experienced it before, it might be an idea to get involved in a meditation class and be guided into gentle relaxations until you feel more com-

fortable about trying it on your own. Meditation is not hard and provides a safe and effective means of finding internal calm, however, it can be tricky to learn to quiet your mind when you first begin. A good instructor will be happy to pass on the tools and you will soon enough be able to enter your own personal state of stillness whenever you feel the need.

Yoga

If being completely still is not for you, then yoga is the next best alternative. Along with the benefits of muscle tone, strength and suppleness, the practice of yoga in itself is one of purposeful movement and concentrated breathing technique which have the added advantage of promoting inner quiet.

Massage

Many people believe massage to be an indulgence that they either cannot justify or, on some level do not deserve – for whatever reason. Neither of these are true. Massage is an almost essential for everybody. There are many different types of massage and a good therapist will direct you into the style that will best suit you at the time, but on every level, massage is an invaluable tool for relaxation and promoting health. And best of all, you have to stop to enjoy it!

Whatever you choose as your means of finding stillness, make sure that you do.....regularly. A joyous November to you all

Kellie from Soul Revival Natural Therapy

Lions club of Portarlington/Drysdale Inc.

Well, another Annual Charity Golf Day, held at the Clifton Springs Golf Club has been and gone. The weather on Sunday 18 September was absolutely beautiful and contributed largely to the day being such a great success. As stated in a previous report, proceeds from the day will be distributed evenly between the Guides and Scouts of Drysdale and Portarlington, a very worth while cause.

It is wonderful to have the business community getting behind such a great cause, for without the generosity of the Sponsors the day could not be such a great success. A very big thank you to the Clifton Springs Golf Club for mak-

ing their amenities and their wonderful golf course available to us on the day. The day would not happen without the Lions and the other helpers on the day. The main people who we thank are who played on the day. For without the players we would have no golf day. So, thank you one and all. The Guides and the Scouts will benefit quite considerably from the proceeds.

During the last few weeks a couple of our members have been involved with Lions Clubs from Geelong and District, in the opening of the new Stage of Developments at the Grace Mackellar Centre. We will be further involved over the

next few months in landscaping of the new facility so the occupants will have nice surroundings. The new stages of the Centre Development are really first class and a great asset to Geelong and the District.

Over the past couple of months we have welcomed one new member and two members who have transferred in from Apollo Bay and Kerang. It is great to get new members so if you have any interest in our Charitable work please contact either John Emerson on 5259 1859 in Portarlington, or Geoff Webster on 5251 2990 in Drysdale.

DON'T LET YOUR COMPUTER BEAT YOU

We can help you:

Improve your productivity;
Clean up and/or prevent scumware;
Improve computer performance;
Edit your digital photos.

Have a private lesson — your house or ours

Contact us for assistance with any computing concerns or queries you may have

Phone Joy or Barrie on 5251 2115
CLANCIE Specialised Services
www.CLANCIE.here.ws



Annual Geelong Miniature Aircraft Association

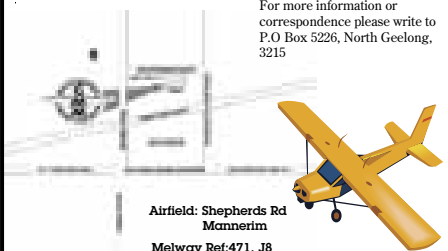
OPEN DAY
November 5th. 2006
Sunday 10a.m. to 4p.m.

Events

- ✦ Aerial Dog fights ✦ Aerobatic Demonstrations
- ✦ Semi Scale Model Aircraft ✦ Open Flying
- ✦ Food available on the day

Talk to club members and see how easy it is to be part of this great hobby

For more information or correspondence please write to
P.O. Box 5226, North Geelong,
3215



Airfield: Shepherds Rd
Mannerim
Melway Ref:471, J8



DRYSDALE GARAGES

- Garages • Carports • Workshops
- Barns • Machinery sheds • Cubbies
- Water tanks • Garden sheds
- Fowl houses • Aviaries • Green houses

Quality Products and Service
Concreting and erecting as desired. All permits as required

Ph: 5222 7838 Fax: 5222 7839 Mob: 0407 550 467
382 LaTrobe Tce, Newtown 3220

FRANK BURGE CARS



KEITH PURCELL

Ph: 5222 1606
Fax: 5221 8608
Mobile: 0418 554 011

172 Fyans Street, South Geelong 3220

Technology Blues

Oh boy, oh boy, oh joy, oh joy,
I've just brought a brand new toy at
a ripe old age, I've reached the stage
where the mind needs some stimulation,
so I acquired a computer, a real
sharp shooter to remedy the situation.

Confronted by acronyms, programs
and sites, folders and files, tabs, bits
and bytes, the minds in a jumble, a
new language to learn, downloads
and uploads, don't know which way
to turn filters and firewalls, splitters,
modems and options, icons, buttons
and other concoctions.

Providers and servers, shortcuts and
mouse, phone lines and power cords
all over the house.

Maximise and minimize, format-
ting and fonts lookout for virus and
spam no-one wants, taskbar, toolbars,
scrollbars in sight, status bar, menu
bar, but no Mars Bar to byte.

Megas and gigas and other such
figures, sound inflationary in the
extreme, but task bars, control panel
and key board.

Are not as bad as they seem, Internet
browsing and email exchange make
the investment worthwhile, and with
lots more study and no doubt more
money.

I'll join the internet stream.

Though in my seventy-eighth year,
its great to get nice new gear, and
while learning is now slow my
granddaughter can show this and that
and what is so, oh, where did that
damn toolbar go!

Ray Austen

(Our new poet laureate)

2006 State Election Candidates

Lisa Neville MP - Member for Bellarine

It has been a privilege to represent you since November, 2002, as the State Member of Parliament for Bellarine. In the past 4 years I have had the opportunity to meet and work closely with many of you on a broad range of issues.

During this time there have been many improvements to those services that local residents rely on – we now have more nurses and doctors working in our hospital as well as more teachers in our great local schools.

Locally there have been improvements to public transport, boating and recreation facilities as well as a major upgrade to the Springdale Neighbourhood Centre.

Despite these achievements there are new challenges ahead. My commitment is to continue to deliver improvements in local recreational opportunities, health services, public transport and education.

In addition the Bracks Government is working to ensure that we have a sustainable water supply for our communities. This will be a major priority.

I am committed to continuing to listen, to advocate and to work hard on your behalf to ensure that Bellarine continues to be a great place to live for the whole community.

Bellarine Party - 2006 State election Policy

- Since my preselection earlier this year, I have been working hard to meet as many people in the electorate as I can.
- What is coming through is that the electorate under Labor is not moving forward with a clear political agenda that is understood.
- Under Labor, water is drying up, and taxes are increasing without improved level of service.
- Under the Liberal proposal for the Bellarine, water will be recycled for industrial and agricultural use.
- We will also use groundwater supplies to top-up catchments reliant on regular rainfall. A previously untapped Otway's aquifer at Newlingbrook has the potential to water 100,000 homes. This will be in the first year.
- One of the major differences between us and the Labor Party is our commitment to real local government.
- We are committed to a full independent review of the boundaries of Bellarine and its council representation in the next 12 months, before you are all given a say on a breakaway council for us.
- Revamped tax such as Land Tax and Stamp Duty on land transfers will be on the table.

Don Gibson, Liberal for Bellarine.

Justin Teague - The Greens

I grew up on the Bellarine and live locally. I am standing as a Green for the Bellarine in the upcoming State election, because there are too many serious problems being swept under the rug or ignored. Water and oil are critical issues that need quick and decisive action. Granting licenses for industry to use drinking water and continuing to support unsustainable agriculture is a slap in the face to the average community member who works to save a relatively small quantity at home. Total disregard towards the effects of dwindling oil supplies and climate change by all major parties demonstrates how lacking in vision they are. Greens will increase transparency in local Government and improved public transport will free up funds for much needed health and public education. The Greens, a Party with strong and progressive policy on all matters affecting people and not just the environment, is steadfastly committed to providing a healthy world for our children. The Greens are grass roots and committed to community and its voice. The Greens: Policies for the next generation, not just the next election.

Uniting Care
**CONCERN
VILLAGE OP-SHOP**

Shop 4 Village Walk
19 Springs Road
Drysdale

Phone: 5251 3640.

We value your custom.
Donations of clean goods always welcome.

**BELLARINE
AUTO SERVICES**

Quality Mechanical Repairs
Tuning - Servicing
LPG Conversion - EFI
Tyres - Batteries - RWC
Licensed Vehicle Testers

Mortimer St. Drysdale
Proprietor: J. Pamplin

Ph. 5253 1644

**BONE MARROW
RECYCLE SHOP**

High St. Drysdale

**Donations of
good clothing
and brick-a-brac needed.**

All proceeds from our shop go to
help those with Leukaemia

Have you heard?

'ATTITUDES 4' is coming to Portarlington Mill!

This will be the fourth Annual, spectacular, art exhibition brought to you by the 'ATTITUDES' art group - Susanne Johns, Julie Morison, Jan Vetma, Dresley Robins, Jenny Lester-Smith and Kaye Clancy plus a special guest graphic artist this year - Lyn Ingles.

View exciting watercolours, oils, pastels and more, plus unique ceramics by Kaye Clancy. Handmade Christmas gifts and cards on sale. Part proceeds from this years raffle will be donated to 'The Cottage By The Sea'.

If you haven't visited The Old Mill in Portarlington, then this is a 'must see' during the months of December and January. You will have the opportunity to soak up the atmosphere of this wonderful historic building with its

fascinating ghost story and museum artifacts. Just a short half hours drive from Geelong, through some of the Bellarine Peninsula's most beautiful scenery, The Portarlington Mill can be found in Turner Court.

Come and meet the artists:-



Open

Saturday & Sunday.
12.00 - 4.00 all December.

Saturday, Sunday & Wednesday.
12.00 - 4.00 all January

Small National Trust entry fee. Plenty of free parking. Sorry, no wheel chair access to upstairs.

From the garden gate.

This globe-trotting gardener has been away again to New Zealand. One highlight of my time in Auckland was to the lovely Eden Garden, created in a huge steep space that was once a quarry. A place of unique beauty the Eden Garden offers peace and tranquility. On the slopes of Mt. Eden, the project had its beginnings in July 1964. Prior to that, the quarry was an overgrown wilderness, an eyesore and an embarrassment. Jack Clark, a farsighted horticulturist, with fifteen fellow enthusiasts took on the task of converting it into a garden. Many volunteer workers transformed this space into what it is today. There are flowering rhodies and azaleas, tulips, cherry trees, ferns, ponds, walkways, bridges. Altogether it is a delightful place to visit. It is hard to imagine what it must have been like before.

My overall impression of New Zealand

land landscape, was of brilliant green paddocks with the sparkling sea never very far distant. Its scenery is beautiful everywhere you go.

Back to more mundane things in the garden in November:

- Plant out the dahlias very soon. Visit some of the Open Gardens in our area.
- Enjoy your Spring flowers. Hedges should be pruned and clipped.
- Check roses for aphids and spray with Pyrethrum.
- Feed citrus trees with high potassium fertilizer.
- Look for black spot and spray regularly through Summer if it persists.

DATES: Flower and Garden Show, Saturday November 4th. Uniting Church Hall, Drysdale.

Garden Club Meeting: Monday November 20th. Uniting Church Hall, Drysdale 7.30 pm. All Welcome.

Wendy Hebbard - President

Clifton Springs/Drysdale Garden Club Inc. Phone 5250 5545

BELLARINE FENCING Co

We do
Picket & Paling,
Fences & Gates.

Phone: Andrew & Gayle Baylis
on 5251 3090 or 0417 544 887



**DRYSDALE
COMMUNITY CHURCH**
275-295 Jetty Road, Drysdale.
Phone: 5253 2241

We invite you to join us for
SUNDAY SERVICES
9.00 a.m.
& 10.45 a.m.

Great worship, friendly atmosphere,
and a message relevant to today.
Tea & Coffee served after each service.

Kids Church and Toddler Church operates
during the 10.45 a.m. Service.



Lynette's
User-Friendly
Computers

**Personalised
Tuition & Training**

Ph: 5259-3963

Serving the Bellarine Peninsula

**Salvation Army
Family Stores**

Mortimer St. Drysdale
Ph. 5251 2475

**Plenty of Bargains
The Place to Shop**

Come and see us We are here to Help You

Local Bees Local Honey Part 4

Last month the swarm had left the hive leaving half the worker bees and about a dozen capped queen cells behind. Life in the hive continues as if nothing was different, less field bees to collect the requirements of the hive is the only difference. The dozen queen cells will all hatch within a short period of time of each other as they are of a similar age, when they are 16 days old. As I have stated earlier there can only be 1 queen and the first one to hatch will then seek out the other queen cells and kill the occupant by tearing a hole in the side of each cell and stinging the younger queen to death. If by chance another queen hatches at the same time then the 2 queens will fight till one is dead.

Now we have the new virgin queen she will start to take control of the hive. The hive operates on the queens pheromones and this stimulates the workers. After 6-7 days the virgin queen will start her mating flights at first she will leave the hive to orientate herself with the area. Then she will begin her mating flights. The queen

will fly to a drone congregation and the drones will fly after her. The strongest will be the lucky drone to mate with the queen. This is all done in flight. But some luck is not always good. When the drone has finished mating with the queen he breaks away and in doing so is paralysed and dies, leaving the remain of his endophallus in the queen which is referred to as the mating sign. The queen will continue to do this for 4 or 5 days and each day she will mate 3 or 4 times. At the end of the mating period the queen will begin to produce eggs and the laying will start. The new queen will begin to lay her quoter of up to 100,000 eggs a year for the next 5 years. The queen will never mate again and the semen she collected on her mating flights is kept stored in her abdomen where it remains viable for the rest of her life.

In the hive bees produce wax from their wax glands that they then use to create the honey comb. But the worker bees don't just build this at random. Honey comb is a perfect hexagon tube. The bees build this to exact size and they

will build either exactly 5mm or 6mm comb it is never almost 5mm or 6mm it is always exactly that size.

The queen moves across the honey comb and uses her front feelers as callipers to measure the size of the honey comb. When the measurement is 5mm the queen will then put her abdomen into the cell then fertilizing an egg and laying it in the bottom of the cell. This will hatch in 3 days and grow up to become a work bee. If the cell measurement is 6mm the queen will lay an unfertilized egg into the bottom of the cell. The egg will also hatch in 3 days and will become a drone bee. A drone bee can have thousands of daughters and grandsons. But a drone bee will never have any sons. If you have trouble with this you will not be the only one but I will explain all next month.

Mark Cornell
Leopold Honey
Apiarist C593

Crime Writers Literary Afternoon, December 3, 2006

Ol' Duke Newcombe Street, Portarlinton. 2-4pm.

Due to popular demand, the Crime Writers Literary afternoon will be held in December at The Ol' Duke, Portarlinton.

As well as the usual suspects, PD Martin will return and talk about her new book, "The Murderers Club" the ever popular Lindy Cameron will discuss her work as well as MC the event. Two emerging authors both held in high esteem by their peers will also journey to Portarlinton. Paddy O'Reilly will talk about her novel "The factory".


This author has had rave reviews about her work in the Sydney Morning Herald, The Age, also the book is listed as one of the best books of 2005.

Another exciting author is Angela Savage who has published her first novel "Behind the night bazaar". This book tackles sensitive issues like paedophiles and child pornographers, and takes the reader on a journey through Asia.

You are welcome to join the authors beforehand for lunch at the normal restaurant prices, or book a ticket to the afternoon session only for \$10.

The authors will be bringing copies of books along to purchase and sign.

This event is very popular event for more information: phone 5259 1593 or email: portarts@yahoo.com.au



**MORTIMER
PETROLEUM**

**PETROL STATION &
CONVENIENCE STORE**
97 High Street Drysdale Phone 5251 2603
Petrol, Autogas Bait & Fishing Supplies

CAR WASH

Open 6.00am-10.00pm



BELLARINE
VETERINARY PRACTICE
— ANIMAL HOSPITAL —

**For all your pets needs
For an appointment
please phone
5253 1393**

108 High St, Drysdale



**18-20 HIGH ST. DRYSDALE.
OPEN 7 DAYS A WEEK
11am - 4pm**

All Public Holidays except: Good Friday, Anzac day,
Christmas day, Boxing day and New Years day.
New Members always Welcome

Ph: 5251 1605

**DRYSDALE
CARPET COURT**

**CARPET - VINYL
CERAMIC TILES
FLOATING WOOD
LAMINATE FLOORS**

Proprietor: Neil Petrie
Phone: 5253 1855 Mobile: 0419 519 030
63 Murradoc Road, Drysdale.

**DRYSDALE
REMOVALS
& STORAGE**

**Local, Country,
N.S.W. & S.A.**

PH. (03) 5251 3674

SPORTS REPORT

Table Tennis

BTTC (Bellarine Table Tennis Club) welcomes you to play table tennis on Monday and Thursday mornings (Keen Agers) 9-12. Monday evening for under 12 from 6-8pm and senior players from 8-9.30pm.

We meet at 123 The Avenue, Ocean Grove. Enquiries Chris 0437 198599, Ken 5258 2953, Therese 5255 1641.

News from the Friends of the Bellarine Rail Trail

Hello to all our readers once again.

There are many and varied reasons why people join the various groups within communities. We decided to ask all our members why they joined our group and what enjoyment did they get from this experience. Following is a precis of some answers received, we hope you enjoy reading them.

- I think the reason for me being a member of Friends are numerous

- 1) I suppose the sense of doing something useful. I think like most of our members they are community minded.

- 2) I know it does me the world of good to get out in the fresh air and do a little bit of grafting. I know I always feel a lot better after a session.

- 3) I am working alongside a great bunch of people.

- 4) I have been accused of being a bit of a work alcoholic. I suppose this may be partly true as I hate doing nothing.

- From my point of view, I am very keen on revegetation and the job satisfaction comes from seeing what has been done in a very short space of time, the fresh air and good company is a bonus.

- Sense of achievement. Congratulatory comments from trail users when working along areas of trail. Enjoyment and exercise during participation.

- We became involved with FOBRT when we saw an invitation in the Geelong Advertiser to attend a tree planting fun day at Geelong Showgrounds. We

became members 4 ½ years ago and enjoyed going to meetings and planting trees along the rail trail. During the first year we were involved with special needs young adults and helped them plant trees along the rail trail from the Showgrounds to Boundary Rd. We continue to attend working bees and enjoy the fun and friendship within the group and we can recommend this enjoyable activity.

Thank you to all our members who made contributions to this article, it gives a new aspect to the workings of a local environment group that is improving a very valuable community asset.

See you on the rail trail sometime.

Trevor Jennings: Secretary FOBRT
Email: friendsofbellarinerailtrail@hotmail.com

Peninsula Players Inc.

Following the success of the One Act Play "A Sunny Morning" directed by Simon Taylor in July, Simon is now at the helm of a full length play "A Handful of Friends" by David Williamson, to be performed in November.

Simon will introduce an almost new cast of actors, I say almost because Marcus Savidis, and Jacquie Hall return to our stage. New members are Sarah Freeman, Michelle Sweeney and Joshua Fraser.

The production will take place in the body of the hall – not in the round – but an interesting concept devised by director Simon. Because of the configuration the audience size is limited to 80 patrons per performance. To offset the reduction numbers, we will present a matinee on Saturday 18th Nov at 2pm in addition to our usual evening performances.

Dates of performances are Wednesday 15th Nov through to Saturday 18th at 8pm sharp and a matinee on Saturday 18th at 2pm at Drysdale Community Hall.

BOOKINGS – tel: 5251 2671 or 5251 2431

NEEDLE SYRINGE PROGRAM

Are you using drugs?

If so, then protect yourself from HIV and Hepatitis C.

Obtain clean kits from the Drysdale Community Health Service
21 Palmerston Street, Drysdale.

A CONFIDENTIAL service.
No questions asked.

MAGGIE GOVE N.D.

**Bowen Therapist
& Naturopath**

Member of A.N.T.A.

**Drysdale: Clinic 03-5251 1188
Ah 03-5253 2230**

(Rear of Elegant Profile)

Naturopath

Lisa Taylor N.D. (A.N.T.A.)

**Drysdale Community Health Centre
21 Palmerston street**

**Monday & Thursday
appointments ph: 5251 2291 AH: 5251 2544**

Also available at Carmoor Clinic, 343 Moorabool St.

Wednesday & Friday: Ph 5223 2616

Specialising in women's and children's health using
Herbal, Homoeopathic and Soft Tissue Therapies.

WANTED!



**Snooker players for
2007 season**

**Call: Joe Skuza
5250 5444**

**Darren Davis
5253 1893**

AllpointsTM @Guyett

You'll be **SOLD** On Allpoints @Guyett.

Allpoints@Guyett is your first step to successfully marketing and selling your property. Our proven sales record speaks for itself. Whether you're selling or buying a property-residential or rural, we have the experienced staff with all the necessary local knowledge to gain you the best outcome.



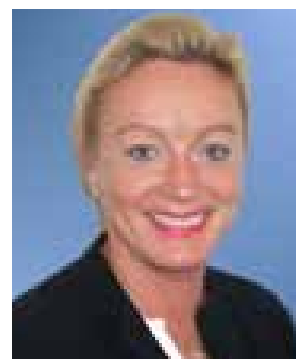
Phil Cumming
0408 599 232
Residential Sales



Jackie Webb
0417 552 456
Residential Sales



Kerry Hardy
0412 105 739
Residential Sales



Prue Street
0400 030 729
Residential Sales

AllpointsTM @Guyett

Ocean Grove
75 The Terrace
5255 1000

Barwon Heads
84 Hitchcock Avenue
5254 3100

Drysdale
11 Clifton Springs Rd
5251 2847

Leopold
22 Dorothy St
5250 1533