

# The SpringDale Messenger

Your Free  
Community  
Newspaper

Compiled and published by the SpringDale Neighbourhood Centre Inc A002916V

Circulation 4,500

ABN 21 404 220 267

Vol 17 No. 1, February 2007

Ph: 5253 1960 Fax: 5253 3050 email: messenger@springdale.org.au www.springdale.org.au

## New access path at the Dell open

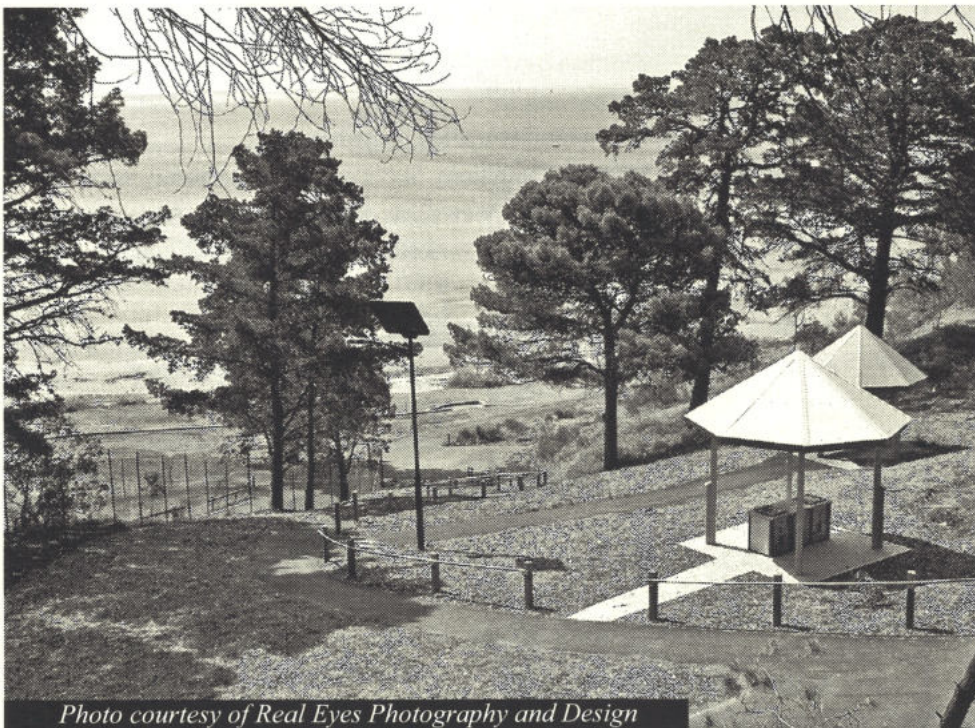


Photo courtesy of Real Eyes Photography and Design

"The new pedestrian access path at the Dell is open," said Coryule ward Councillor Tom O'Connor.

Cr O'Connor said, "The new path allows pedestrian access from the Clifton Springs Golf Club to the foreshore via a new route to the east of the high risk zone at the Dell."

"The new path means residents will have ready access to the beach from the top of the Dell this summer," he said.

"The City undertook a major works program at the Dell including the demolition of the decommissioned pool and

kiosk block, both of which were found to be vulnerable because of the ongoing risk of land slippage at the site," Cr O'Connor said.

"A new toilet block has been constructed along with a barbecue and shelter which enjoys glorious views across the bay," he said.

Cr O'Connor said the main priority of the works was to create a new pedestrian pathway so residents could more easily access the foreshore by this summer.

Cr O'Connor praised Clifton Springs residents who have contributed to the project. "About 50 locals took part in a recent clean up day and thanks to their help we removed a large amount of litter and weeds such as Boneseed," he said.

"Particular mention must be made of the contribution by local residents Jane McDonald and Linda Gallus

along with long serving locals such as Roger Lavingdale and Bernie Filbay," Cr O'Connor said.

He said the site had been mulched in the short term in readiness for planting when the weather was more favourable to establishing new plants.

City of Greater Geelong Council budgeted \$240,000 for the Stage Two works at the Dell in its 2006 / 2007 budget.

Wayne Elliott President of the Drysdale / Clifton Springs Community Association said the association was relieved

*continued page 5*



**DRYSDALE  
VILLAGE  
HARDWARE**  
**(03) 5251 3267**

YOUR HANDY  
HARDWARE  
STORE

THE ARCADE  
HIGH STREET  
DRYSDALE, 3222.

**Westpac**

- OPEN SATURDAY
- HOME LOAN CENTRE
- GOOD TERM DEPOSIT RATES

CONTACT: WAYNE, LISA,  
BEV, PAM OR MICHELLE  
5251 1624

**SHOP 9, SUPERMARKET  
COMPLEX, DRYSDALE**

# The SpringDale Messenger

The SpringDale Messenger is compiled by the SpringDale Neighbourhood Centre Inc. A0024916V, 17-21 High St. Drysdale.

Postal: P.O. Box 80, Drysdale, 3222.

**All editorial and initial advertising enquiries to SpringDale Neighbourhood Centre**

**Phone: 5253 1960**

**Fax: 5253 3050 or email messenger@springdale.org.au  
www.springdale.org.au**

All contributors are asked to provide their articles on disc (Microsoft Word) or email it for ease of processing. Contributions are still accepted as written copy but need to be submitted in the week prior to our copy deadline.

**Next Publication:**  
**March 2007**

**Copy deadline:**  
**5th February, 2007**

**Distribution:**  
**23rd February, 2007.**

**Views expressed in this newsletter are not necessarily the views of the Publisher, the SpringDale Neighbourhood Centre Inc.**

## Advertising:

To ensure publication in a specific issue, copy must be submitted prior to deadline.

This includes both new adverts and alterations to an existing advert.

Layout and Design of this issue by Pagination Design Services, Geelong.

Contact at Pagination Design Services, Geelong is Anthony Zavaglia.

## Community Calendar

**SpringDale Community Calendar – a SpringDale Neighbourhood Centre initiative to support the whole community.**

*This calendar will enable you to quickly look up what is happening over the next couple of months (maybe longer) in our area. There will be a calendar for the next 12 months put on our website—accessible to all groups to help when planning events. If you would like to place an event on our calendar on the website and also in the next couple of issues of the SpringDale Messenger—then please email, write or ring the details of the event through to the SpringDale Office.*

### 2007

|     |    |                                                                                                                |
|-----|----|----------------------------------------------------------------------------------------------------------------|
| Feb | 11 | Rotary Family Fun Day at Point Richards                                                                        |
|     | 12 | Neighbourhood Watch GLG 58,59, C/Springs meeting 7.30pm<br>C/Springs Bowling Club                              |
|     | 14 | Neighbourhood Watch GLG 69, C/Springs meeting 7.30pm<br>C/Springs Bowling Club                                 |
|     | 18 | Drysdale Community market 9am -1pm                                                                             |
|     | 20 | Adrian Mannix Community Services Awards Dinner                                                                 |
|     | 23 | Drysdale Ladies Day View Club meeting 10.30am                                                                  |
|     | 24 | Neighbourhood Watch GLG 68, Drysdale meeting 7pm<br>SpringDale                                                 |
|     | 25 | Portarlington market 9am -2pm                                                                                  |
|     | 26 | Neighbourhood Watch GLG 68, Drysdale meeting 7pm<br>SpringDale                                                 |
| Mar | 5  | Business Breakfast at SpringDale 7am                                                                           |
|     | 11 | Bellarine Agricultural Show – Portarlington Recreation Reserve                                                 |
|     | 12 | Labour Day Public Holiday<br>Neighbourhood Watch GLG 58,59, C/Springs meeting 7.30pm<br>C/Springs Bowling Club |
|     | 14 | Neighbourhood Watch GLG 69, C/Springs meeting 7.30pm<br>C/Springs Bowling Club                                 |
|     | 14 | Bellarine Historical Society meeting 7.30pm                                                                    |
|     | 17 | Bunyip Festival at Drysdale Primary School                                                                     |
|     | 18 | Drysdale Community market 9am-1pm                                                                              |
|     | 25 | Portarlington market 9am -2pm                                                                                  |
|     | 26 | Neighbourhood Watch GLG 68, Drysdale meeting 7pm<br>SpringDale                                                 |

.....There's room for your club's information night, membership drive day, special event to be listed here - please send the information to SpringDale for inclusion in this section.

## BELLARINE AUTO SERVICES

Quality Mechanical Repairs  
Tuning - Servicing  
LPG Conversion - EFI  
Tyres - Batteries - RWC  
Licensed Vehicle Testers

Mortimer St. Drysdale  
Proprietor: J. Pamplin

**Ph. 5253 1644**



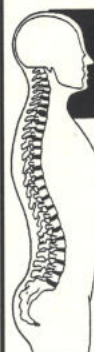
## The Drysdale...

COFFEE • LUNCH • DINNER

**OPEN 7 DAYS**

Lunch and dinner  
**Reservations: 5251 2301**  
Sports bar • TAB  
• Kids Playground  
• Alfresco beer garden

**DRYSDALE HOTEL** High Street, Drysdale.



## Drysdale Physiotherapy & Sports Injury Clinic

■ Spinal ■ sports ■ Manipulative ■  
■ Arthritis ■ Workcover ■ TAC ■ Vet Affairs ■  
■ Hydrotherapy ■ Exercise Rehabilitation ■

**Peter Terry** MAPA, MPAA  
and associates

**Ph. 5251 2958**

27 - 29 High Street, PO Box 179, Drysdale 3222

# FROM SPRINGDALE NEIGHBOURHOOD CENTRE

## Happy New Year to everyone

The last few weeks have evaporated so quickly. The Christmas Season gave many people the opportunity, to take the time and make the extra effort, to catch up with friends and relatives, neighbours and workmates etc. Although it seems very stressful, to some people at the time, I think we all enjoy the satisfaction that catching up brings.

Last year at this time, I encouraged people to help the Guides and the MS association by collecting records for a large auction – our community supplied a large collection of records which was greatly appreciated and \$1500 was raised. Later in the year we called on people to knit beanies for students from Bellarine Secondary College to help homeless children – this challenge was taken up by a couple of members of our community and their efforts were greatly appreciated by the students and I'm sure by the people who received their generous donation.

This year I'm wondering if we could help people who cannot afford spectacles by recycling our old spectacles. We have a few pairs of glasses at home that I have never known what to do with – now I know. Please bring your glasses to SpringDale and we'll pass them onto Glasses Collection Aid.

I hope you received a copy of our new edition of the North Bellarine Business and Services Directory. It took many months to bring it into this form and I'm sure the next edition will be even better. Special thanks to Sarah Chopra and Nicole Simpson for the parts they

played bringing this document to print. We sincerely thank all the businesses who opted into the directory and we encourage other businesses to contemplate being part of the next directory.

The directory will form part, of the about to be revamped, Welcome Kit available to all new residents to the North Bellarine. We are currently looking for sponsors to help print the new covers required for the kits. Please ring SpringDale 5253 1960 if you would like to be part of this project. Two years ago I tried to establish morning teas, once a quarter, to help to welcome new residents – if you would like to be involved in this, please contact SpringDale.

Another part of our support for businesses is the Business Network that meets for breakfast once a quarter – our next Business breakfast will be Monday 5th March 7am-8.30am. Breakfasts are \$8.00 per person and reduced rates for those who sign up for annual membership of the Breakfast Network and better rates for those who sign up as part of our Business and Services Directory and our Business

Network. Please phone SpringDale to book your spot.

Instead of being open for a couple of hours a day during the school vacation we decided to hold 2 enrolment days. This was to enable the staff and volunteers to have a well deserved break. We would appreciate your feedback about this change to our operating pattern.

I would also like to take this opportunity to remind how reliant we are on volunteers. We currently have one part-time coordinator who is paid for 25 hours work a week and 2 part-time qualified Occasional Care staff, the rest of our large contingent of people at SpringDale are volunteers who freely give their time and skills to support our community. Some of our volunteers have recently found paid employment and so we have room for a few more volunteers for this coming year.

The Adrian Mannix OAM Community Service Award helps us all to recognize and celebrate community service. SpringDale is proud to be partners with Portarlington/Drysdale Lions Club and Drysdale Rotary Club to bring this to fruition for our community. This year

## Family Law Worries?

Come in for a *free* chat

**RISTEVSKI**

L A W Y E R S

1 High St., Drysdale  
(old Post Office) Ph: 5251 3453

## FOOT HEALTH CARE FOR ALL AGES



**Michael A. Nicol  
Sue Partridge**

General Consultations  
Diabetics and High Risk  
Orthotic Therapy  
Nail Surgery  
Veterans' Affairs  
TAC and Work Cover

DRYSDALE

**5251 2958**

27-29 High St. Drysdale

## SpringDale Facilities

*Personal use of Comptuers*

*Internet Access*

*Photocopies*

*Faxing*

*Laminating*

*SpringDale Messenger in large format*

*Room Hire*

*Tables and Chairs for hire*

*Crockery of hire*

Reasonable rates and cheaper rates for members

we have 2 finalists and the winner will be announced at our community celebration dinner on Tuesday 20th February at the Portarlington Golf Club. Tickets for the two course dinner are \$25 and are available from Lions, Rotary and SpringDale.

We have recently increased our list of services – SpringDale purchased a colour copier – so we can now make colour copies of up to A3 sized documents. During our learning period February, you may need to leave documents overnight to ensure a fully trained person is on deck to ensure the copies are properly taken. Prices will be available on request and of course there will be reduced rates for our SpringDale members – we now have more than 300 members. (We would encourage people to renew their membership in February – its still just \$2 per year.)

During the last 18 months we have been looking forward to and liaising with City of Greater Geelong concerning the painting of the inside of the hall and the rejuvenation of the hall floor. We were promised that the works would be completed during our break in most activities - December and January but unfortunately just before Christmas we were informed that the earliest it could be completed was at the start of February 2007.

The SpringDale Committee of Management looked forward to this renovation and so agreed to this date. Unfortunately

this has meant that many of our advertised courses have had to be changed. Courses which don't use the hall but maybe affected by the smell of the floor sealant have also been postponed or changed. SpringDale Groups that use the hall, Bellarine Woodworkers, Peninsula Players and Drysdale Guides will all be affected by this so please contact SpringDale or your group leader for more details. We sincerely apologise for any inconvenience that this may cause. We also apologise in advance for the smell that may pervade through the centre for the month of February.

Some new programs that are being introduced this year are:

- Community Kitchen for men who would like to learn to cook. This project is being run in conjunction with Bethany and Bellarine Community health and is currently scheduled for Thursdays please contact SpringDale if you are interested in being part of this or if you would like to suggest an alternative target group.
- Parenting classes in conjunction with Glastonbury – there are very limited places for this course – it is being held on Monday mornings commencing 19th Feb – contact SpringDale for an application form.
- Consumer Affairs Victoria is coming to SpringDale in 2007. The mobile service will be visiting Drysdale on a fortnightly basis commencing Tuesday 6th February at 1.30 to 3.00pm.

They provide free advice on buying, selling or renting houses, buying a car, building and renovating, credit and debt, scams, refunds, lay-bys and warranties and other consumer issues. For information or appointments call 5221 4650.

We hope that you take advantage of these extra services to ensure that they continue in our area.

I'd just like to thank all the businesses who help us to provide this newsletter for our community via their advertising – and encourage our readers to continue to support these businesses and to let them know you found their ad in the SpringDale Messenger. I'd also like to thank all our contributors and remind them that copy for each SpringDale Messenger is due on the first Monday of the month for distribution by the end of that month. We will endeavour to thank each contributor as we receive their article. We are happy to give anyone a copy of our SpringDale Messenger Policy document upon request.

We look forward to 2007 and to being of service to you if we possibly can be.

*Yours sincerely Anne Brackley for the SpringDale team.*

*PS. Thank you to everyone for your concern – my operation went well and I am recovering slowly. I am looking forward to being back on deck early in the school year.*

**Delivering PC Solutions**  
We come to you!

## COMPUTER SALES & REPAIRS

BROADBAND HELP, VIRUS REMOVAL, UPGRADES,  
CUSTOM BUILT PC'S, GENERAL PC MAINTENANCE  
CALL STEVE AT 03CS, BELLARINE PENINSULA

**Ph: 03 5253 2538**  
**Mob: 0405 523 606**



**Quality Butcher**  
PETER HOMMELHOFF

**HOMMY'S**

**QUALITY MEATS**

*For something new and different*

16 High Street, Drysdale 3222.  
Phone: 5251 2270



chartered accountants

scott cleary & co

▼ **Tax Returns** ▼ **Small Business Advice**  
▼ **BAS Returns** ▼ **Investment Advice**

72-76 Ryrie Street, Geelong PO Box 795, Geelong, Victoria, 3220  
Tel: 03 5224 1133 Fax: 03 5201 1222

**Drysdale office - CNR. OF SPRINGS RD. & HIGH ST, DRYSDALE**  
**www.scc.net.au**

from page 1

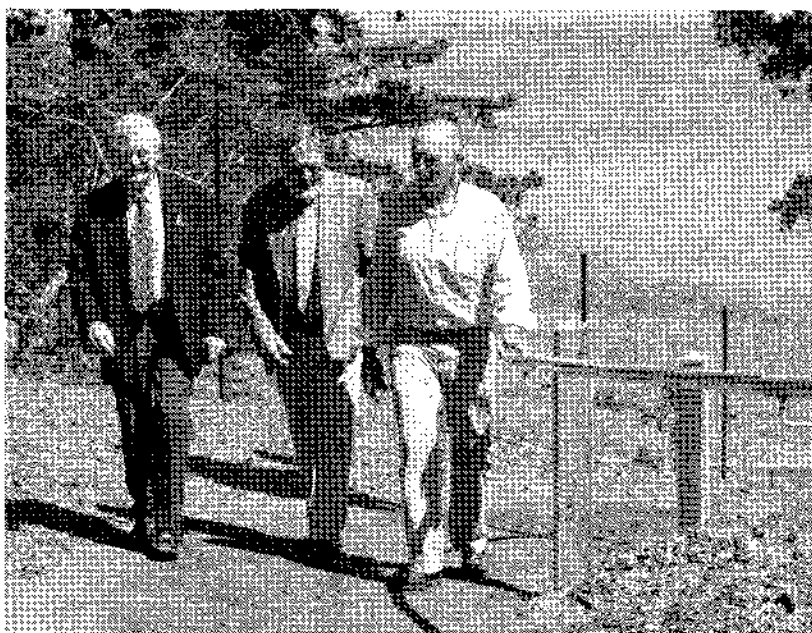
and delighted that the Dell was open with access available to the community.

"This is one small step in the big picture for the local Clifton Springs / Drysdale community," Mr Elliot said.

"The Association's Foreshore Sub Committee is to be congratulated for its determined, ongoing role in the process and we look forward to their continued input - our thanks also to the City of Greater Geelong Environment Unit."

The Dell was closed to the public in 2002 because of significant land slippages at the site and the City has undertaken extensive monitoring of the site since then.

Access to the foreshore via the beach was opened in February this year, following the installation of bore water pumps and a geotechnical monitoring system at the site.



## Adrian Mannix OAM Community Service Award

Thank you to everyone who was nominated for the Adrian Mannix OAM Community Service Award 2007 and thank you to those people who prepared the nominations. The presentation will take place on Tuesday 20th February at the Portarlington Golf Club. Tickets for a two course dinner are \$25 each and available from the Drysdale Rotary Club, Portarlington/Drysdale Lions Club or Springdale Neighbourhood Centre.

### The finalists are:

#### Ron West

Ron has been a volunteer for the Guide Dogs Association since 1985 and

Chairman of Portarlington Community Association for 6 years. Ron joined the National Trust in 1989 and was a Committee Member of Portarlington Mill property and Treasurer from 1993-1997, Vice-Chairman and volunteer Coordinator 1996-1998. He was an inaugural member of Portarlington Neighbourhood Watch, collects and submits "Town by Town" entries to the Echo weekly, is a member of the Local Advisory Committee for the Bellarine Health Centre and a volunteer driver for the Adult Day Activities Program.

#### Julie Tucker

For the past 15 years Julie has been a

foster mother to over 50 children in her Clifton Springs home, from babies to teenagers, while working and raising her own family. On one occasion Julie had up to 5 children in her care, so as not to separate siblings. She has also done respite care. Julie has given purpose and hope to many children and young adolescents, many of who have maintained contact with her. Julie has cared for her ailing mother for 10 years, studied and successfully attained her Diploma in Childcare and recently a Diploma in Welfare, and is a warm, caring role model.

# Painting?

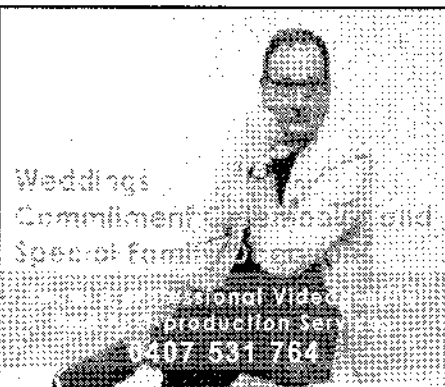


**Wallington**  
**MITRE 10**  
**Home&Trade**  
*All the help you need*

For the  
**BIGGEST** Paint  
and Accessories  
store on the  
Peninsula.....

Corner Grubb Road  
and Bellarine Highway  
Wallington  
Ph: 5250 2855

**OPEN 7 DAYS**



Weddings  
Commitment ceremonies  
Special family portraits  
National Video  
Production Serv  
0407 531 764



**OPEN 6 DAYS**  
(Closed Tuesday)

- Dining
- Study
- Bedroom
- Entertainment

Huge collection of furniture and homewares,  
cane-ware, nautical & unique giftware.

Floor stock or made to measure.

*'Country atmosphere with old fashioned service'*  
16 Collins Street DRYSDALE (Next to Hotel)  
Phone / Fax: (03) 5253 1516

## From the Garden Gate

Welcome to another year of gardening. But what sort of year is it going to be? There will be many challenges for the ardent gardener and one will be to not lose heart in the heat and dryness.

Some horrific water stories were going around in early December. One bus driver was driving in the Geelong West area for several weeks and saw Council sprinklers on all day every day, watering a new sports field etc. On complaining to the Council, he was told that "the residents had objected to the dust" and that "we had an exemption from Barwon Water." How silly and unfair! The newly-planted grass would die as soon as the watering stopped.

This same driver saw a tanker labelled "Clear Spring Mountain Water" which was filling from a water-hydrant.

One Council adviser recommended new grass which required 80mm of rain per year, so that was planted. The area receives 50mm.

### What to do in the garden in February.

I am rather stumped. Not even weeds are growing any more. The green bins are empty, too. If you have re-cycled water use it sparingly on favourite plants. I'm told that Geelong has only enough water till about April.

Any mulch you have put down will repay you dividends in keeping plants cool although the cost of hay is now high.

The "good book" says;

\*Pest Patrol - Home made soap spray  
Combine 2 cups water and 2-3 teaspoons washing detergent, mix in a spray bottle. Fully cover both the insects and affected parts of the plant. Repeat two or three times every four to five days to clean up infestations of - aphids, lacebugs, leafhoppers and white fly.

\*Move pots and hanging baskets into shaded spots.

\*Top up mulches everywhere.

\*Regularly dead-head all flowering plants to prolong flowering.

\*Save seeds from annuals, to give away or keep until conditions improve.

\*Give gardenias with yellow leaves a serve of chelated iron.

Planting. I would not recommend any new plants this Summer

### VISIT OPEN GARDENS

February 24-25 Ashburton, Glen Iris, Pantons Hill and Ceres.

Ceres - "Hill House." (Melway 450J10. 360 Wandana Dve. Ceres. Vic.)

That's all for now. HAPPY NEW YEAR.

Garden Club next meeting. Monday February 19th. 7.30 p.m. Uniting Church hall Drysdale.

ALL WELCOME

Enquiries 52505545

### CLIFTON SPRINGS/DRYSDALE GARDEN CLUB

The first meeting for the New Year will be held on Monday February 19th at rear Uniting Church Hall, High Street, Drysdale at 7.30pm.

Speaker - topic is hydroponics.

Membership renewal \$5 per year.

ALL WELCOME. Supper and door prize.

Enquiries: 5250 5545 or 05438 332 767.

## Better Hearing Australia Inc.

Do you know anyone with a hearing problem? Better Hearing Australia conducts self help sessions in and around the Geelong area including Drysdale and Queenscliff.

Joan Belle is our excellent tutor at the Drysdale location which is held at the Drysdale Community Health Centre, 21 Palmerston Street, Drysdale. Some of the topics covered during sessions are:

• New technology for hearing aids, telephone, television and more.

• Ways to make best use of our hearing.

• Practise in lip reading, concentration, relaxation.

First session Wednesday 7th February, 2007.

## BELLARINE GLASS & SCREENS

**Fast glass repairs -  
7 days a week**  
(Same day service)

- Security Doors • Shower Screens
- Mirrors • Wardrobe Doors
- Glass Repairs • Flyscreens
- Balustrading

**03 5253 2301**  
**24 Hours**

38 Murradoc Road, Drysdale, 3222.  
D. Ward Fax: 5251 3905

## William Sheahan Funerals

*incorporating*



**5251 3477 - All hours**

*Murradoc Road, Drysdale*

*"Committed to Caring"*

# Local Bees Local Honey

## Part 6

With both commercial hives as well as hobby hives the need for a good queen is essential. The queen controls the hive and the quality of the queen will relate directly to the honey production, cleanliness of the hive, and also the nature of the worker bees in the hive. Always remember my father telling me about his bush bees that were so aggressive that they started stinging you within 100 metres of the hive site. The reason he kept them well out into the bush where they rarely got to meet any humans. I asked him why he kept putting up with their aggressive nature and he always claimed their honey was better. I believe that it said that because he had to fight them for every drop.

Queen breeding is very advanced skill in this country and we now export queens to the USA. Artificial insemination of queens is performed in Sydney at the agricultural University. Yes I did say artificial insemination; these queens are then used as breeding stock and the queen breeders then produce their sale queens for about \$20.00 per

queen. This will give you some idea as to why we don't like to loose a queen by allowing the hive to get to the position of swarming.

A queen purchased from a queen breeder usually arrives by Australia Post. Yes in a small cage with a stamp you will find a queen and five or six attendants. In one end of the cage has been packed with queen candy, which is a mix of icing sugar and honey which is mixed till it makes a solid block. The queen's attendants will eat this and then produce royal jelly to feed their queen. The attendants will also keep her clean and also maintain the temperature in the cage. Leading up to the arrival of the new queen we find the old queen in the hive and destroy her. When adding the new queen the hive will try to destroy her as she is not their queen. Safe in her cage with her attendants the worker bees in the hive will start removing the queen candy in order to get to the foreign queen. This will take up to 24 hours and by the time they succeed her pheromones have spread through out the hive and she

walks out of the cage as the queen of the hive and begins to lay her eggs.

With the life cycle of the hive in sixty days that hive of nasty aggressive bees are now very placid and a pleasure to work with.

There has been a lot of interest with the articles that have appeared in this publication and I'm currently trying to gauge the interest in forming a Beekeeping club on the Bellarine. At this stage it is in planning and if we have enough people interested we will attempt to get it off the ground. This will not only be for those that are interested in keeping hives but also for those that just wish to learn more first hand and enjoy a new interest. If you are interested please send name and contact details to either of these addresses. [beekeepers@big-pond.com](mailto:beekeepers@big-pond.com) or drop a note into our mail box at 19 Kanimbla Avenue Leopold. Everyone will be welcome.

Mark Cornell  
Leopold Honey  
Apiarist C593



## BELLARINE HISTORICAL SOCIETY - 2007

### DISPLAYS & GUEST SPEAKERS

#### OLD COURT HOUSE MUSEUM, DRYSDALE

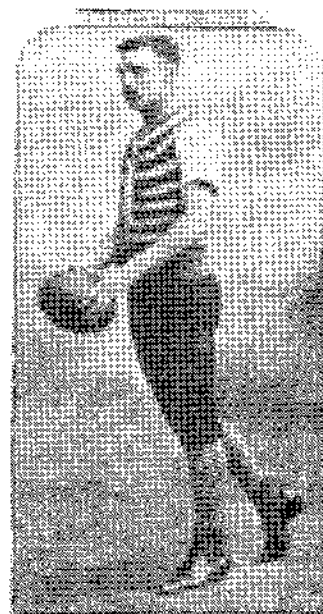
FEBRUARY DISPLAY: Each Sunday 1.30 - 4.30pm

Drysdale Football Club: \* Memorabilia \* photos \* jumpers worn over the years

MARCH MEETING: Wednesday 14th March, 7.30 pm

GUEST SPEAKER: Ron Medson, International Harvester and Hawkes Brothers

Visitors & NEW MEMBERS are always welcome at our meetings  
- why not bring a friend and introduce them to our group



## DRYSDALE GARAGES

- Garages • Carports • Workshops
- Barns • Machinery sheds • Cubbies
- Water tanks • Garden sheds
- Fowl houses • Aviaries • Green houses

Quality Products and Service  
Concreting and erecting as desired. All permits as required

Ph: 5222 7838 Fax: 5222 7839 Mob: 0407 550 467  
382 La Trobe Tce, Newtown 3220

## SOUNDVISION TRANSFER

Records - Cassettes  
Video and Camtapes - Films  
Slides - Photos

Recorded to disc.

Ph: 0438 513 974

**DELICIOUS**  
**CLASSES HELD IN WERRIBEE TORQUAY & DRYSDALE**

Classes include:  
Ballet, Jazz & Tap  
Little Fairies  
Folk, Choral, and  
Pops & Dance  
Breakdancing  
Social Dancing  
Ballroom, Modern &  
Latin Classes  
or Fun & Fitness  
Aerobic Circuit  
Swimming  
Cycling  
Golfing  
Aerobic  
Aerobic

Classes are held in a beautiful hall with a large kitchen and a bar. All classes are supervised by qualified instructors. Bookings are essential. Call 0438 513 974 for more information.

# Bunyip Festival 2007 – Be seen in green in 2007.

The Bunyip Festival is on St Patrick's day this year Saturday 17th March, at Drysdale Primary School from 10am to 3pm.

We have all the usual treats in store for everyone – Market stalls, show bags, rides, cake stall and we are currently planning to break the Guinness World record for Macarena dancing – we need thousands of people willing to dance the macarena – if you or your family or your sporting group or your club would like to be part of this community event – please let me know.

We'd also like to hear from any sporting clubs or community groups who would like to come to the Bunyip Festival and share their interest with our community.

The Bunyip Festival has been important to our community for more than 30 years. The first Bunyip Festival was held in 1975 as part of the centenary celebrations of Drysdale Primary School. Clifton Springs Primary School spent its first months sharing the Drysdale Primary School grounds until its School buildings were ready. Its because of this common history that Drysdale and Clifton Springs Primary Schools continue to share the Bunyip Festival and it alternates each year from one School ground to the other.



Who knows – you might find your pot of gold at this year's Bunyip Festival.

Yours very sincerely

Anne Brackley for the Bunyip Festival Organising Committee 2007

## Parenting classes

*Glastonbury Child and Family Services in conjunction with SpringDale Neighbourhood Centre Inc presents:*

### 3-3-3 magic effective discipline for children

A three session program to teach parents and carers effective and well researched ways to better manage misbehaviour in children 3-12 years.

**When:** Monday 19th February 2007  
Monday 26th February 2007

Monday 5th March 2007

**Time:** 10.00am- 12.00pm

**Where:** SpringDale Neighbourhood Centre

17-21 High St Drysdale

**Cost:** \$5.00

(includes all three sessions, morning tea and 2007 membership to SpringDale Neighbourhood Centre)

The program is designed to assist parents and caregivers:

- increase their knowledge about what works in managing difficult behaviour and what doesn't
- lessen their feelings of frustration
- get better results with less effort and stress when they are dealing with their children's troublesome behaviour

#### Contact:

Kelly Jacobson on 5222 6911

For registration or further information  
Strictly limited places



## Drysdale Motors

**FOR ALL AUTOMOTIVE  
TUNING AND SERVICING**

### Specialising in LPG DYNO TUNING

Have your LPG vehicle Tuned on a "rolling road". If your car runs on LPG And hasn't been dyno tuned Then it hasn't been tuned.

- Roadworthy Testing
- Fuel Injector Cleaning
- Air Conditioner Servicing
- LPG Conversions
- New Car Servicing

**44 Murradoc Rd, Drysdale, 3222.  
PHONE: (03) 5253 1033.**

## The Bendigo way.

**(You wouldn't want it any other.)**

At Bendigo Bank we are here to serve you, not the other way around. Everything we do is designed to make things easier for you. That is why we offer the convenience of banking over the phone and computer, as well as traditional friendly face-to-face service.

We also offer a full range of personal and business banking products and services.

For more information call into 44 Newcombe Street, Portarlington or phone 5259 3266.

Bellarine Peninsula  
**Community Bank Branch Bendigo Bank**



www.bendigobank.com.au Bendigo Bank Ltd, Fountain Court, Bendigo, VIC 3550. ABN 11 068 049 178. AFSL 237879. (bb22971-v3) (7/06/2006)

# Ladies Probus Club of Bellarine Inc.

Happy New Year to all the readers of the Messenger, also to the numerous people who help to compile it each month.

The New Year brings new thoughts and ideas from those who are considering taking up a Committee Nomination, the club needs fresh faces and an additional burst of much needed energy to get through the year.

I consider the club had a successful year 2006 which completes it term at the March AGM.

Past events: We visited the Belmont Uniting Church at Christmas Time, where we had a most delightful afternoon of choir singing followed by afternoon tea.

The club have a "Cottage by the Sea" tin which members are invited to drop in any small change throughout the year, which is used to buy new toys and items that the children would like. We approached Maggie at the Drysdale \$2.00 shop and asked for her help, which she did and also discounted many items which meant there were subsequently more toys available to us.

Our Christmas luncheon was a huge



success and our invited guest Leah Brown, the opera singer, entertained us for a while. Santa was a very welcome guest also and gave out many lollies and kisses. The Golf Club did provide us with an excellent meal and the day was enjoyed by all.

February is the Club's 20th Birthday and the first President Mrs Pat Herrick,

is invited to address the meeting and cut the cake.

The final trip arrangements for a sunset cruise in February are being organised now.

Until next time.

Yours in friendship

Iris ( Liz ) Tolton

## Debbie Lee School of Dancing – Drysdale

*Uniting Church Hall*

Classes held Monday and Wednesday

Principal teacher - "Debbie Lee"

Classes for boys and girls 4yrs. old to teenage

## Hip Hop/Funk – Tap Jazz – Song and Dance

- End of year performance held at Ford Theatre, GPAC. (No sewing involved)
- Enrolments being accepted for 2007
- New students and beginners welcome

**Let's dance**

**Phone Debbie Lee – 5250 3244 or 0418 317 487**

Fun and caring class environment providing experienced dance tuition

*Clifton Springs Golf Club*  
*Play by the Bay*  
*Phone 5251 3391*



**GOLF MEMBERSHIPS**  
**ONLY \$240.00 FOR 5 MONTHS**  
**PHONE 52513391 FOR DETAILS**

**Green Fee Players Welcome**  
**\$22.00 for 18 holes**  
**Magnificent Couch Fairways**  
**Bookings 52531488**

**Also All Categories Members Draw + Regular Raffles**  
**Every Friday and Saturday Night**

**Pots for glasses prices**

**Fantastic Views**

**Try our Fabulous Lunches**  
**Prices from \$6.50**  
**Monday - Friday only**



**Sunday to Thursday Evening**

**\$5.50 Meal Deal**

**Buy one main meal off our regular menu and**  
**receive another of equal value for**  
**only \$5.50**

**on presentation of this coupon**

**\*Not valid Public Holiday or Long Weekends**

**Valid until Feb 28th 2007**

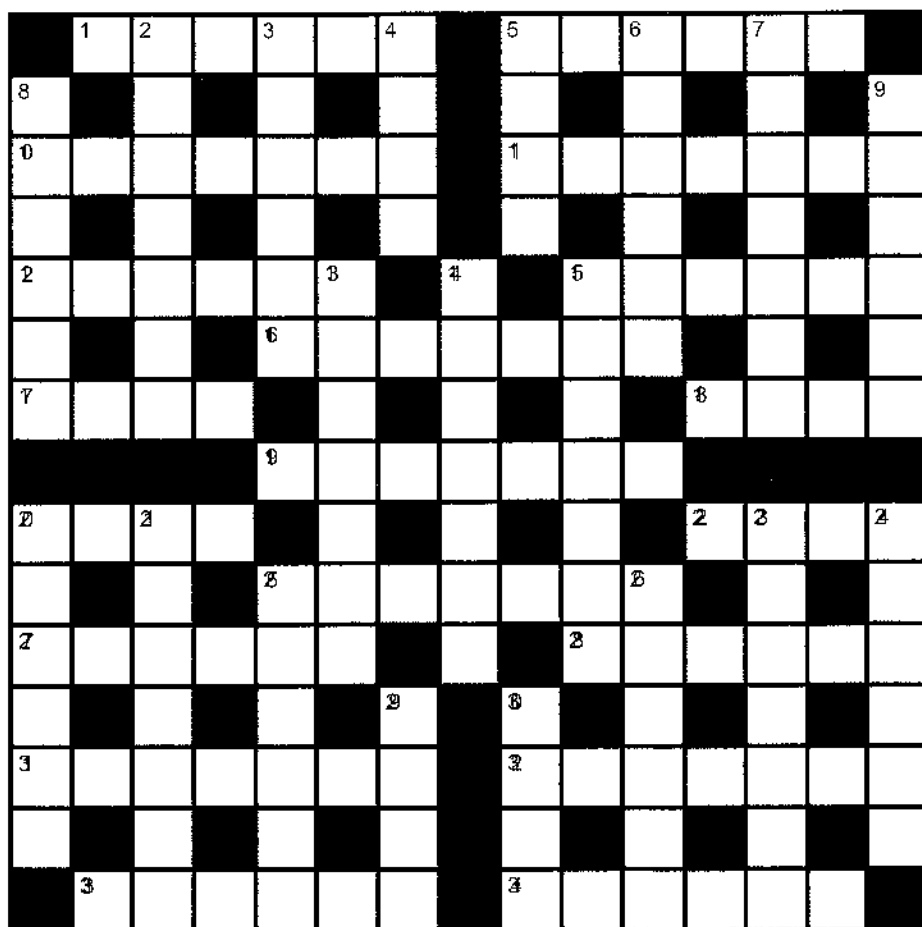
**Conditions Apply**

## Across

- 1 Realtor, \_\_\_\_\_ agent. (6)
- 5 Make certain. (6)
- 10 Hinted. (7)
- 11 Historic railway, \_\_\_\_\_ Billy. (7)
- 12 Revolve. (6)
- 15 A person who lacks pigmentation. (6)
- 16 Meet (requirements). (7)
- 17 Unable to be found. (4)
- 18 Folkloric, man-eating giant. (4)
- 19 Mixture. (7)
- 20 To receive and entertain another as guest. (4)
- 22 Designated area. (4)
- 25 Speck. (7)
- 27 Composer, Bela \_\_\_\_\_. (6)
- 28 Run out. (6)
- 31 Set in motion, \_\_\_\_\_ off. (7)
- 32 Direct course. (7)
- 33 Minerals. (6)
- 34 Spoof. (6)

## Down

- 2 Pays tribute to. (7)
- 3 Checks. (6)
- 4 Concludes. (4)
- 5 Catch sight of. (4)
- 6 Without danger. (6)
- 7 Lifting. (7)
- 8 Wine storage receptacle. (6)
- 9 Disregard. (6)
- 13 Reserve. (7)
- 14 \_\_\_\_\_'s capital city is Helsinki. (7)
- 15 Obliging. (7)
- 20 Ways of doing things. (6)
- 21 Surmise. (7)
- 23 British actor, Sir Laurence \_\_\_\_\_ (7)
- 24 English city. (6)
- 25 Cricket delivery. (6)
- 26 Apart from. (6)
- 29 Irritates (4)
- 30 Bird, Shadow \_\_\_\_\_. (4)



For more great puzzle fun, join the SpringDale Crossword Club.

Term 1, 2007 - every Friday morning 11 am in the SpringDale foyer. All welcome.  
Answers on page 13.

## SpringDale Jigsaw Club

Want a challenge? The Jigsaw Club offers you just that! The Club opens on the first Thursday of each month from 10am to noon in the front room of the SpringDale Hall. Come along and have a cuppa while you choose your jigsaw. There is a choice of over 2000 puzzles at the bargain price of 40 cents each.

### BELLARINE FENCING Co

We do  
Picket & Paling,  
Fences & Gates.

Phone: Andrew & Gayle Baylis  
on 5251 3090 or 0417 544 887



**PETROL STATION & CONVENIENCE STORE**

97 High Street Drysdale Phone 5251 2603  
Petrol, Autogas Bait & Fishing Supplies

**CAR WASH**

Open 6.00am-10.00pm

### BENEFIT FROM OUR WORLD OF EXPERIENCE



At Harvey World Travel we know that it's not a great deal if it's not a great holiday, and no matter what your budget or where you want to go, our dedicated consultants are waiting to share their knowledge and experience with you.

**WINNER, 2006 OFFICE OF THE YEAR**

**Harvey World Travel Drysdale**

Shop 2A, 6 High Street, Drysdale • Phone (03) 5251 1125

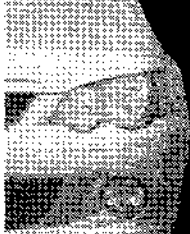
Email [drysdale@harveyworld.com.au](mailto:drysdale@harveyworld.com.au)



The Travel Professionals™

**GREAT SERVICE GREAT HOLIDAY!**

### FRANK BURGE CARS



**KEITH PURCELL**

Ph: 5222 1606  
Fax: 5221 8608  
Mobile: 0418 554 011

172 Fyans Street, South Geelong 3220

# Drysdale Senior Citizens Club

This is the start of another new year, so first we would like to wish you all a very happy and healthy 2007.

Our Christmas dinner went very well the food was good and there was lots of fun and entertainment by Brendon Scott was excellent, everyone went home very happy.

So now we start all over again on Mon-

day 5th February will be our first Bingo and trading table. It starts at 1.15pm. and we supply afternoon tea.

We will be having a lot of different things coming up, so always watch the Town by Town in the Echo, and that will keep you up to date.

We had a lot of new members last year and they are all enjoying themselves so we

hope we have the same this year. Come and look around and enjoy a cup of tea with us, you don't have to join right away.

To all our sick members we wish you a speedy recovery and hope to see you back at the club soon.

*President: Esther.*

*Secretary: Mary*

## Art News for the North Bellarine

"...creativity is within all of us and just requires to be nurtured and developed."

Visual artist and art educator, Annette Playsted will continue teaching the Discover the Artist Within courses at the SpringDale Centre in Drysdale in 2007.

Annette's courses were warmly received in 2006 and, in response to the desire of many of her students to continue the journey of discovery into 2007, a new course of a more challenging nature has been designed. This advanced course may also be suitable for anyone who has had recent art training although she recommends the foundation course Discover the Artist Within for its focus on getting the eyes seeing again as the artist sees, even for more experienced artists. The wonderful news is that a few of her 2006 students have successfully enrolled in tertiary art courses in 2007, confident and ready to go.

The art room at SpringDale is an

air conditioned space with excellent lighting and Annette's aim is to build a friendly, challenging but enjoyable experience for her adult students of all ages. Feedback sessions emphasising the positive and acknowledging individual progress are a feature of her approach. The courses are built around the idea that creativity is within all of us and just requires to be nurtured and developed. The key is to build confidence in art making.

The foundation course, Discover the Artist Within, is specifically designed to teach the skills of seeing as the artist sees, and introduces different media for students to explore and begin to tame. The diverse and direct medium of drawing is predominantly used in both the foundation and advanced course. Within the group, the students work at their own pace. Annette's lessons are very stimulating and progress is assured.

Annette Playsted is a practising artist, a registered art teacher in Victoria and a founding member of the SpringDale Life Drawing Group for artists. Her business, Art on The Bellarine, provides workshops for art groups, private tuition and mentoring, as well as artworks for sale. Commissions are welcome.

## Bellarine Community Health Service

### BETTER HEALTH SELF MANAGEMENT PROGRAM.

This is a 6 week program suitable for people suffering any form of Chronic Illness.

It enables you to get more out of life and to learn techniques so your Chronic Illness does not rule your life.

Over the 6 week period there are sessions on:

- How to manage your symptoms
- How to communicate more effectively with your doctor
- How to lessen frustration
- How to fight fatigue
- How to get more out of life
- How to make daily tasks easier.

**WHEN:** Next program begins Thursday 22nd Feb. 2007 until Thursday 29th March.

**TIME:** 1.30pm until 4pm.

**VENUE:** Ocean Grove Community Health Centre.

**Cost:** \$5 per session or gold coin donation.

For more information and to book please call: Margaret Ahern/ Primary Care Nurse/ Portarlington Community Health Centre/ 5259 2537. **BOOKINGS ESSENTIAL.**

### Uniting Care **CONCERN VILLAGE OP-SHOP**

Shop 4 Village Walk  
19 Springs Road  
Drysdale

**Phone: 5251 3640.**

We value your custom.  
Donations of clean goods always welcome.

### **Drysdale Tyrepower**

Say 'Hello' to your Tyrepower Pro.

- Tyres (Car, 4WD, Tractor & Truck)
- Wheels/Packages
- Brakes
- Exhausts
- Lube services
- Wheel alignments
- Mobile service unit
- Batteries
- Suspensions

Locally owned family business

**25 Murradoc Road, Drysdale 3222**  
**Ph: 5251 5232 Fax: 5251 2074**

### **BELLARINE** VETERINARY PRACTICE — ANIMAL HOSPITAL —

**For all your pets needs  
For an appointment  
please phone  
5253 1393**

**108 High St, Drysdale**

### **BONE MARROW RECYCLE SHOP** High St. Drysdale

**Donations of  
good clothing  
and brick-a-brac needed.**

All proceeds from our shop go to help those with Leukaemia

**CLIFTON SPRINGS PRIMARY SCHOOL  
PRESENTS  
"HAPPY FEET"  
APPEARING AT OUR SCHOOL DRIVE-IN  
ON FRIDAY 16TH FEBRUARY 2007  
\$20 PER CAR  
HOT FOOD, DRINKS AND SNACKS AVAILABLE  
TICKETS ON SALE AT SCHOOL FROM  
31ST JANUARY  
Any enquiries to Kim McNerney on 5253 1539**

## Identifying local native plants on the Bellarine peninsula

The beauty of the Bellarine Peninsula's natural communities and the desire to protect them has recently inspired the creation of two local flora booklets.

Pocket sized, 64 page, full colour booklets titled 'Coastal Plants of the Bellarine Peninsula' and 'Inland Plants of the Bellarine Peninsula' have been produced by Swan Bay Integrated Catchment Management Project (SBICMP) staff and volunteers.

Each booklet features a 'vegetation communities' map, detailed photographs, and points of interest for 50 key plant species that occur in our local woodland, wetland, coastal or inland areas on the Bellarine.

The booklets were funded through the Coast Action Coastcare Program and Corangamite CMA Regional Landcare Program.

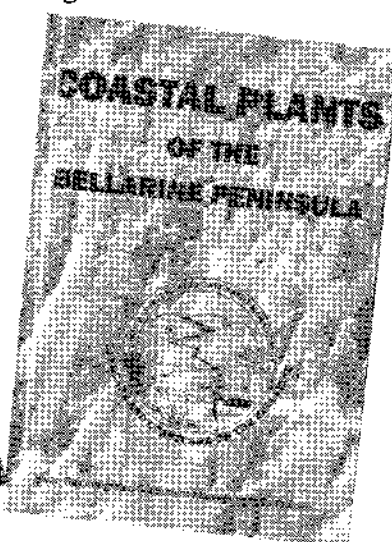
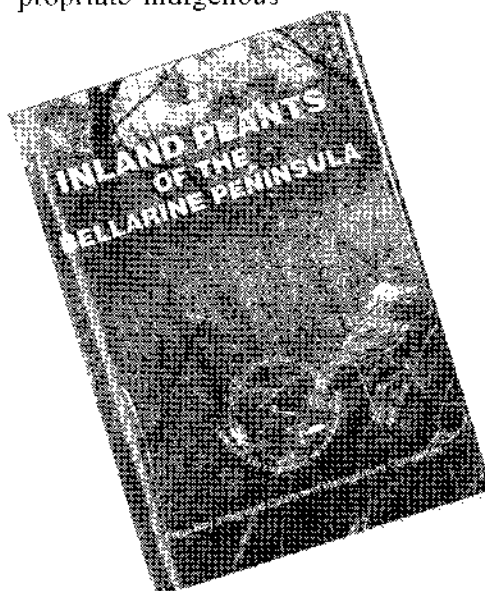
With approximately 5% of pre-European local native vegetation remaining in the Geelong Region, it is vital to protect and link up the little that remains.

Community groups and land managers have hailed these booklets as a valuable resource that will assist them in their local vegetation restoration projects.

These booklets will also help those seeking to establish low maintenance indigenous gardens by identifying appropriate indigenous

plants that will grow well in their area.

The booklets make it easy for everyone to discover, identify and appreciate our local plant communities. For further information on where to access a copy please contact SBICMP staff Matt Crawley on 5256 3687 BH or Sue Longmore on 5258 1836 BH.



### Crossword solution from page11

**Across:** 1 Estate, 5 Ensure, 10 Alluded, 11 Puffing, 12 Rotate, 15 Albino, 16 Satisfy, 17 Lost, 18 Ogre, 19 Amalgam, 20 Host, 22 Zone, 25 Granule, 27 Bartok, 28 Expire, 31 Trigger, 32 Beeline, 33 Beryls, 34 Satire.

**Down:** 2 Salutes, 3 Audits, 4 Ends, 5 Espy, 6 Safely, 7 Raising, 8 Barrel, 9 Ignore, 13 Earmark, 14 Finland, 15 Affable, 20 Habits, 21 Surmise, 23 Olivier, 24 Exeter, 25 Googly, 26 Except, 29 Irks, 30 Ibis.



276-290 Jetty Road, Drysdale.  
Phone: 5253 2241

We invite you to join us for  
**SUNDAY SERVICES**  
**9.00 a.m.**  
**& 10.45 a.m.**

Great worship, friendly atmosphere,  
and a message relevant to today.  
Tea & Coffee served after each service.

Kids Church and Toddler Church operates  
during the 10.45 a.m. Service.



Lynette's  
User-Friendly  
Computers

**Personalised  
Tuition & Training**

**Ph: 5259-3963**

**Serving the Bellarine Peninsula**

## Salvation Army Family Stores

**Mortimer St. Drysdale**

**Ph. 5251 2475**

**Plenty of Bargains**

**The Place to Shop**

Come and see us We are here to Help You

## Drysdale Guides

Drysdale Guides look forward to another year of community service, leadership development and of course fun. Many of our guides have put the success of guides down to 3 things – fun, friendship and food – these 3 things ensure each activity, each evening, each camp and each gathering is always successful.

The mission of guides is "Helping young women grow into confident, self respecting, responsible community members". I love to see the girls and our leaders develop. We currently have 5 trained leaders working with our girls on Thursday afternoons and evenings.

The Portarlington / Drysdale Lions club rewarded our efforts last year by giving us a donation to help us with our program. We look forward to using this money to purchase an adult, child and baby CPR mannequins and partnering with SpringDale Neighbourhood Centre and National first aid to enable these mannequins to be

able to be used by our community to practice CPR in between annual updates. From February onwards, these updates will be available for use most days during most times, but please ring SpringDale if you would like to confirm. We sincerely thank the Lions Club for their generous donation and also everyone who supported their golf day which provided this money.

Drysdale Guides finished 2006 with a girl designed and directed play and also our AGM to ensure we start 2007 organised and ready for action. Our first activity will be at the Rotary Family day at Point Richards on Sunday 11th February – hope you can come and visit us. Guides is for girls aged between 5 years and 18 years and also for adult women who'd like to share their skills and time in achieving our mission.

Guides has always given me the confidence to tackle challenges that have

met me along my life's path. Guides has given me opportunities to travel within Australia and also overseas to Mexico, India and Bangladesh. I continue to look forward to traveling to Canada and Belize to meet up with guide leaders I've corresponded with for years.

I would like to take this opportunity to wish all current members of the World Association of Girl Guides and Girls Scouts and all previous members, because as we know ...once a guide always a guide..., a very happy World Thinking Day for Thursday 22nd February and if you would like to be invited to our District celebration please give Anne Brackley a ring on 5251 2250, so I can let you know our finalized plans dependent upon weather.

Looking forward to another great year,  
Yours sincerely

Anne Brackley for Drysdale Guides.

## Drysdale Ladies Day VIEW Club

VIEW stands for VOICE, INTERESTS, & EDUCATION of WOMEN. It is not a daytime sight-seeing club at all, - ( we have been asked this! )

We are part of a nation-wide network, sponsored by The Smith family, & are an active, friendly, club who hold monthly lunch meetings, with interesting & varied guest speakers. We also arrange, on average, a couple of social activities per month, & these tend to be limited only by the extent of our Committee's imagination !

Along the way, we help support The Smith Family's "Education For Life"

program, with over 400 school students being financially assisted in the Geelong region alone, to participate fully in school life. Results around the nation have already proved that this program increases their retention rate within the education system, thereby giving these children the best chance of breaking the poverty cycle. Education to equip young people to earn a decent living, is the best weapon against entrenched poverty.

**VIEW is:**

- 23, 000 women from diverse backgrounds, with wide-ranging interests.

- Non party political, & not religiously affiliated.

- Enabling women to enhance their self confidence, skills & knowledge, while making new friendships.

- Actively working with The Smith Family to create a more caring & cohesive Australian community.

Our next meeting will be on 23 February, after the summer holidays, at the Clifton Springs Golf Club Function Room, at 10.30am.

For more information phone Christine - 5251 1127, or Gloria - 5253 3256

## Country Women's Association

The Drysdale Branch will hold its first committee meeting for 2007 on Tuesday 6th February at 1pm. Donations for "Family Pamper Packs" for Drought and Bushfire Areas will be gathered at this meeting.

A general meeting will be held on Tuesday 13th February with a Sausage Sizzle at the Community Rooms at The Springs commencing at noon. Monthly meeting to follow. Geelong Group Conference and Annual General Meeting reports will be presented and discussed.

### The *Life* Shop

Good quality clothing & bric-a-brac.  
Donations of clothing & bric-a-brac  
always welcome.

"Village Walk"

Shops 9 & 10, 21

Clifton Springs Rd. Drysdale.

Ph: 5253 2168



18-20 HIGH ST. DRYSDALE.

OPEN 7 DAYS A WEEK

11am - 4pm

All Public Holidays except: Good Friday, Anzac day,  
Christmas day, Boxing day and New Years day.

New Members always Welcome

Ph: 5251 1605

## DRYSDALE REMOVALS & STORAGE

Local, Country,

N.S.W. & S.A.

PH. (03) 5251 3674

# SPORTS REPORT

## The news from Drysdale Football Netball club

Drysdale Football Netball Club has started its preparations for the coming netball season with Senior pre-season training well under way. We would like to extend an invitation to members of the community, who may be interested in being a part of DFNCs 2007 to attend our Registration Day as detailed below.

2007 promises yet another successful year with Head Coach Sharon Wilson at the helm. Sharon will provide support and guidance to our coaches while taking on the 19&U and A Grade sides with David Jenson coaching the B grade, 15&U and 13&U teams.

It should be an exciting prospect to watch our A grade side develop with a wealth of junior talent showing they can match it against their more experienced, senior counterparts, only going

down by the slimmest of margins in the 2006 Grand Final. Congratulations to the 17& Us and C Grade for taking out the 2006 Premierships. Commiserations to those who participated in finals but who couldn't quite get over the line on the day, lets aim for one better in 2007. Another exciting development for the 2007 season will see a newly created division for 19& Us which is unique to the Bellarine and District Netball Association.

The off-season has seen many changes at DFNC. A new President and current club life member, Michelle Davis and elected committee has taken over the ropes from Laurelle Stratton. We would like to thank Laurelle and the vacating committee for their hard work and dedication which has seen the club thrive both on and off the court.

Some of the initiatives put in place for the 2007 season will see our Badged and Junior umpires getting a pay rise, coaches and players (except 11's) are to polish up on the rules of netball by attending a Level 1 & Theory update to be held in May and the club plan to offer more rewards with the new Membership Fees. There will be an increase in social activities for both junior and senior club members and the club will be providing first aid and strapping personnel (in training).

We hope to see many familiar and new faces at this years Registration day on:

Thursday 8 February 2007

4.30pm to 7.30pm

Any enquiries can be made to the club President Michelle Davis by contacting ph 5253 1893.

## Bayside Sharks Soccer Club

### EARNs ACCREDITATION AS THEY HIT ALCOHOL HEAD ON

Efforts by Bayside Sharks Soccer Club to tackle the difficult issue of alcohol management in community sport has resulted in the club receiving Level 1 accreditation as part of the Australian Drug Foundation's Good Sports program.

Good Sports has been designed to assist clubs with the responsible management of alcohol through an accreditation process requiring the clubs to implement a variety of practices and policies at each level. It is the first nationwide alcohol accreditation program of its kind. The program helps to break the so-called link between alcohol and club profits and in the process guides clubs to a healthier and safer future.

Bayside Sharks Soccer Club Spokesperson, Murray Hall said today that "We offer friendly and safe club facilities which comply with Liquor Licensing's legal requirements. An important part of the program was that we put our volunteer bar servers through a training course in responsible service of alcohol. We want people to know the Bayside Sharks Soccer Club's focus is sport, not drinking. We serve alcohol in a safe, responsible manner and drinking is certainly not our reason for being here. I can assure all members of our community that this is a welcoming and safe place to play and watch sport."

The club will be regularly monitored to ensure compliance with the accreditation criteria.

In 2007 The Bayside Sharks Soccer Club will continue to kick goals! They have accepted a grant offered by the Bendigo Bank to repair flood lighting to the ground which will enable the club to offer soccer to more people. With the success last year of the Soceroos and Melbourne Victory, local soccer has had a surge of interest from all levels of the community. This year the Bayside Sharks will enter both junior Boys and Girls teams in the WVSA Soccer Competition as well as both senior Men and Women's teams. Female teams generally play Saturdays and all mixed gender and male teams play Sunday. If you are interested in playing in the 2007 season please leave your name with Murray or Donna on 5257 2107.

## ALINGA

### LANDSCAPE DESIGN

*Plan your garden to make it part of your home!*

- \* On site garden consultations
- \* Expert advice in plant selection
- \* Computer generated plans and images of your new garden!

Neil Muhlhan

Ph: 03 5253 1299 email: alingadesign@bigpond.com

## MAGGIE GOVE N.D.

### Bowen Therapist & Naturopath

Member of A.N.T.A.

**Drysdale: Clinic 03-5251 1188**

**Ah 03-5253 2230**

*(Rear of Elegant Profile)*

## NEEDLE SYRINGE PROGRAM

Are you using drugs?

If so, then protect yourself from HIV and Hepatitis C.

Obtain clean fits from the Drysdale  
Community Health Service  
21 Palmerston Street, Drysdale.

**A CONFIDENTIAL service.**

**No questions asked.**

# Allpoints<sup>TM</sup> @ Guyett

## You'll be **SOLD** On Allpoints @Guyett.

Allpoints@Guyett is your first step to successfully marketing and selling your property. Our proven sales record speaks for itself. Whether you're selling or buying a property-residential or rural, we have the experienced staff with all the necessary local knowledge to gain you the best outcome.



**Jackie Webb**  
0417 552 456  
Residential Sales



**Kerry Hardy**  
0412 105 739  
Residential Sales

# Allpoints<sup>TM</sup> @ Guyett

**Ocean Grove**  
75 The Terrace  
5255 1000

**Barwon Heads**  
84 Hitchcock Avenue  
5254 3100

**Drysdale**  
11 Clifton Springs Rd  
5251 2847

**Leopold**  
22 Dorothy St  
5250 1533