



# The SpringDale Messenger



ABN 21 404 220 267 >> Compiled & Published by the

SpringDale Neighbourhood Centre Inc.

## ANZAC DAY

*They shall grow not old, as we that are left grow old;  
Age shall not weary them nor the years condemn.  
At the going down of the sun and in the morning*

*- we will remember them*

Friday, 25 April 2008

### Drysdale R.S.L. Anzac Day Service

A service will be held on Friday, 25 April in the Drysdale School Activity Hall commencing at 10.30am. The address will be given by an officer from the Australian Staff College at Fort Queenscliff and at the end of service a wreath laying ceremony will take place at the monument in the Main Street, Drysdale. The flag flying at half mast will be raised at the completion of the Anzac service. Refreshments will be available at the R.S.L. Hall.

ANZAC Day is Australia's most important national occasion. It marks the anniversary of the first major military action fought by Australian and New Zealand forces during the First World War. It is also a time to remember soldiers who were in WW2 and more recent conflicts who were lost and give thanks to those who survived. Our thoughts are always for the troops that are deployed overseas at this time.



Memorial on site at the Drysdale RSL Hall



Medals belonging to:  
RAAF Flt/Sgt Ivan Joseph Londish  
Filter Amourer/ Air Gunner  
RAAF Sqd 11 Catalinas  
Sqd 12 Liberators  
WW2  
• 1939-45 Star  
• Pacific Star  
• Good Conduct Medal  
• Service Medal

In this issue ... Adrian Mannix Dinner (6), NEW Youth page (8)  
Local Committee Notes ... Great Recipes ... Travel Talk ... Garden Ideas (16)

### Drysdale Village HARDWARE



THRIFTY-LINK  
HARDWARE

The Arcade  
High Street  
DRYSDALE 3222  
(03) 5251 3267



## Westpac

Open Saturday  
Home Loan Centre  
Good Term Deposits Rates

Shop 9  
Supermarket  
Complex  
Drysdale

Contact  
Wayne, Lisa, Bev,  
Sandra, Rhianon & Kate  
(03) 5251 1624



## INSIDE THIS ISSUE



### NEW 'YOUTH PAGE'

Page 8



### DRYSDALE COMMUNITY BANK UPDATE

Page 15

### Deadlines for May 2008 Issue

Copy 31 March

Distribution 26 April 2008

Circulation 5000 Copies

Distributed throughout Drysdale, Clifton Springs, Portarlington, Indented Heads, St Leonards, Ocean Grove and selected businesses on The Peninsula and on our website worldwide.

### SpringDale Neighbourhood Centre

Opening Hours Monday to Friday 9.30am - 3.30pm during school terms and by appointment.

Compiled & published by the SpringDale Neighbourhood Centre Inc. A0024916V

17-21 High Street Drysdale  
Postal Address:  
PO Box 80 Drysdale

For all editorial and initial advertising enquiries.  
SpringDale Neighbourhood Centre  
P: (03) 5253 1960  
F: (03) 5253 3050  
E: messenger@springdale.org.au  
W: www.springdale.org.au

### The SpringDale Messenger

Designed by Lyn Ingles - blue pencil publishing

All contributors are asked to provide their articles on disc, Microsoft Word document or email it for ease of processing. Contributors are still accepted as written copy but need to be submitted in the week prior to our copy deadline.

### Editing of Contributors Material

Contributors should note that the right to modify submitted articles is retained by The SpringDale Messenger.

### Views

Views expressed in this newsletter are not necessarily the views of the publisher, the SpringDale Neighbourhood Centre Inc.

## Facilities @ the SpringDale Centre

- Personal use of Computers
- Internet Access • Photocopying • Faxing
- Laminating • Room Hire • Crockery Hire
- Tables & Chairs Hire
- SpringDale Messenger in large format

- Reasonable Rates
- Concession Rates for Members

BOOK NOW!

Are you an owner/operator of a business or service on the North Bellarine Peninsula? Join many of the businesses who are already part of this successful directory for only \$30 per entry. Our Business Directory is now closing bookings for the 2008 edition. Circulation to homes within the areas of: Drysdale, Clifton Springs, Portarlington & St Leonards. Call (03) 5253 1960 to book your entry.

### Community Calendar

SpringDale Community Calendar is a SpringDale Neighbourhood Centre initiative to support the whole community.

The calendar is an 'easy to see list' of happenings in our area. To help you to plan an event, access our website [www.springdale.org.au](http://www.springdale.org.au) to view events.

If you wish to place your event in the website, calendar and further issues of The SpringDale Messenger please email, write or call the event details to our office.

### April 2008

- 6 Daylight Saving ends
- 7 Term 2 starts
- 8 Consumer Affairs Mobile Service
- 18 Ladies Day View Club meeting at Leopold Sportsmans Club
- 20 Drysdale Community market 9am-1pm
- 22 Consumer Affairs Mobile Service
- 25 Anzac Day
- 27 Portarlington market 9am-2pm

### May 2008

- 13 SpringDale Business Breakfast 7am
- 18 Drysdale Community market 9am-1pm
- 23 Ladies Day View Club meeting at Leopold Sportsmans Club
- 25 Portarlington market 9am-2pm
- 28 Adrian E. Mannix Award Presentation Dinner





# news

from

The SpringDale Neighbourhood Centre

Anne Brackley  
centre coordinator

## Hi friends I've met and friends I haven't met yet.

I was invited to see the Community Space rooms in St Leonards recently and found them to be very light and inviting. We have been given a few suggestions for courses to run and a few groups have come forward who will use the rooms weekly or fortnightly and a couple of people have said that they would be happy to 'man' the rooms for a day a week. It's all looking very successful.

We continue to work with the Portarlington Neighbourhood House Group and the Sea Change Men's Shed group towards successful outcomes. Community development can seem like a slow process but along the way many skills are gained and people grab opportunities to excel in new fields that they didn't dream of even short times before hand. I was a little 'gob smacked' when I was asked if we did any Community Development at SpringDale. Most of what we do is Community Development, grass roots Community Development. We are connecting people with information or other people, we try to draw out needs and dreams, we try to give opportunities for people to be able to grow and find happiness.

Last year we had a couple of very successful international nights. This year we are planning to have an Italian Night in June and we have had a Filipino night suggested perhaps in May during Neighbourhood House Week - please register your interest in these as numbers will be limited. We have found Friday Nights to be our best nights for these extravaganzas.

We have been working with Lyn Ingles from Blue Pencil Publishing for almost a year and we continue to get such good feed back about the SpringDale Messenger. Thank you to Lyn, Judy and Julie who devote many hours each month to bring it together. We will be running another SpringDale Messenger workshop in the near future to try to catch other contributors or advertisers who would like to know more about our newsletter.

I welcome Matt Wade as a new writer for the Messenger. Matt is a young person who will be writing and collating youth articles. We look forward to working with Matt and his friends.

We continue to receive articles for Town by Town in the Echo. We have done this for about 4 years. We enjoy being able to provide this service for our residents and we thank Sharon Walters for her dedication to this role.

Don't forget to check out the Term 2 Course & Opportunity Guide and if you have lost it, please give us a ring and we will send you another one.

Hoping to see you at SpringDale sometime soon.

Anne Brackley  
on behalf of the SpringDale team.

**REMEMBER!  
HIGH STREET  
DRYSDALE  
IS ONLY  
50KM....  
PLEASE  
SLOW DOWN.**



Lynette's  
User-Friendly  
Computers

**Personalised  
Tuition  
& Training**

Phone (03) 5259 3963  
Serving the Bellarine Peninsula

Rick Paradise

**THE  
MOWING  
BLOKE**

(03) 5251 2234  
Mob 0434 493 123

- All aspects of Garden Care
- Workcover accreditation



What's Happening?  
@ The SpringDale Centre

## WHATS NEW ...

We are still offering exciting courses and Groups at SpringDale. Please if you have an idea or a skill you can still share - phone our friendly staff and let's turn the idea into a reality. Phone: (03) 5253 1960

## Tummy, hips and thighs

New class starting. Our qualified trainer in all aspects of exercise, tone and fitness shall help you carve away that summer comfort for a new year of fitness & health. Come and join this exciting fun class. This is a low impact class, toning thighs, buttocks and abdominal pelvic floor strength. All levels are welcome. Age, gender, fitness level is no issue. Great for beginners.

**Commences: Tuesday 22nd April**

**Times: 6pm - 7pm**

**8 Sessions**

**Cost \$80**

**Trainer: Sally McDonald**

## Expressions of Interest

### Cup Cake Decorating & Icing

Many people have expressed interest in learning how to decorate and ice cup cakes for that special occasion.

**1 Session Workshop**

**Phone SpringDale (03) 5253 1960**

Daylight Saving ends  
Sunday, 6 April 2008



- Remember to replace the battery at the end of Daylight Saving each year
- Offer help to the elderly with replacing their battery
- Clean and test your smoke alarm each month

**BELLARINE**  
VETERINARY PRACTICE

**OPENING HOURS**

Mon - Thurs 9am- 6.30pm

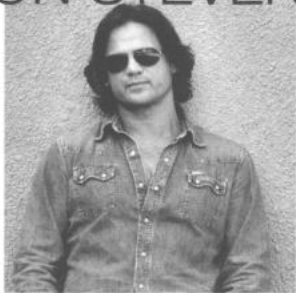
Friday - 9am-5pm

Sat - 8.30am - 12.30pm



108 HIGH STREET DRYSDALE  
(03) 5253 1393 Consulting by Appointment

MOTHER'S DAY  
**Win** DOUBLE  
PASS  
JON STEVENS



From Noiseworks to Jesus Christ Superstar to INXS and beyond, Jon Stevens is an absolutely sensational live performer.

**SUN 11 MAY 2PM**  
**DEAKIN WATERFRONT CAFE**

To enter fill out the coupon below and send or deliver to: **SpringDale Neighbourhood Centre**  
High Street, Drysdale

Name: \_\_\_\_\_

Address \_\_\_\_\_

Phone No: (03) \_\_\_\_\_

**COMPETITION CLOSSES 3PM MONDAY 5 MAY**



**NORTH BELLARINE  
YOUTH GET KEYS  
TO THE COFFERS**

At Parks Hall in Portarlington in February, I was delighted to announce that the North Bellarine area has been chosen to develop a Youth Foundations Victoria (YVF) initiative. This means that young people in the Portarlington, Drysdale and Clifton Springs areas will have the chance to be part of a Brumby Government program where they can learn new skills and help decide where money goes in their community. The Brumby Government has provided \$225,000 for the program, and the Bellarine Peninsula Community Bank has contributed \$105,000.

YVF is a terrific program that will help local young people assist others young groups in Victoria to run activities that benefit the whole community. I am very pleased because there is so much enthusiasm here for helping young Victorians play some part in decisions that affect them and our wider society. The local partnership group consists of representatives from the City of Greater Geelong, SpringDale Neighbourhood Centre, Bellarine Community Health, Glastonbury Child and Family Services, Bellarine Secondary College, St. Ignatius College, Jolt Group Training, Barwon Adolescent Task Force, Portarlington Football Club, St. Leonards Soccer Club and local traders.

**\$150,000 GRANT TO IMPROVE  
BELLARINE RAIL TRAIL**

Another very exciting local grant will assist the Bellarine Rail Trail in becoming a major tourism drawcard. The \$150,000 grant through the Brumby Government's Small Towns Development Fund to the City of Greater Geelong will go towards infrastructure development making it a powerful attraction for recreational walkers, bicycle and horse riders.

The project includes installing two shelters at Moolap and Curlewis, a shelter with a toilet at Leopold, interpretive



From Lisa Neville's desk

signage, sealing 1.6 kilometres in Leopold between Christies and Melaleuca Roads and beautification and revegetation works.

**WORK STARTS ON THE  
BELLARINE AQUATIC CENTRE**

It was most rewarding to be able to turn the first sod as work began on the new Bellarine Aquatic Centre. It is a long fought for and long awaited piece of infrastructure which will service the entire Bellarine community, and will cater for all ages and abilities. The Brumby Government has contributed \$2.5 million, and the City of Greater Geelong is spending \$5.5 million on the multi-purpose centre which will provide for a healthy and connected community.

As always, please don't hesitate to contact my office on 5248 3462 if there are any issues with which we may be able to assist.

Until next time,  
**Hon Lisa Neville MP**  
Member for Bellarine


**SpringDale Card Group**



Our group started out as Springdale Canasta Group and has now expanded to other card games. More complex variations of Canasta such as Samba and Bolivia are now being played, based on the original Canasta game. We are also playing 500 and Euchre and Cribbage is just being introduced. Any new games members want to play will be welcomed.

The group plays each Monday during school terms from 12.30pm to 3pm and the cost is \$2 per week per member. We are always ready to welcome new members. The group has lots of fun and is very relaxed.

**Any one wishing to join can contact either Brian or Pat Wintle on (03) 5253 2410 or enquire with Anne Brackley at the SpringDale Neighbourhood Centre on (03) 5253 1960.**



**POLICE  
FIRE  
AMBULANCE  
Dial 000**

**NEIGHBOURHOOD  
WATCH INFORMATION**

**GLG 69 - Ron Renfrew**  
SpringDale Drysdale  
(03) 5253 2207  
Meetings to be decided.

---

**GLG 58,59 - Mark Cline**  
C/Springs Bowls Club  
Clifton Springs  
(03) 5253 2717  
2nd Monday • 7.00pm

---

**GLG 68 - Doug Palmer**  
SpringDale, Drysdale  
(03) 5251 2522  
4th Monday • 7pm

**Home Loan Lender of the Year<sup>9</sup>**

ANZ has won Money magazine's Home Loan Lender of the Year, again. That's nine times and counting. So now you don't have to spend endless hours searching for the best home loan options available. Independent researchers have done all the hard work for you. To find out more about ANZ's award-winning home loans, simply call our Mortgage Specialist, Murray on 0423 828 262 or Branch Manager, Jan on 5251 3433. Alternatively, drop into our branch at Shop 4, 3 Wyndham St, Drysdale. We've got time to listen.

Money magazine's Home Loan Lender of the Year 2005, 2006 and 2007. Personal Investor magazine's Home Lender of the Year 1999-2002, 2004 and 2005. Many of ANZ's Home Loans were awarded CANNEX mortgage star ratings in 2007. All applications for credit are subject to ANZ's normal lending criteria. Terms and conditions available on application. Fees and charges apply. Ask us for details. Australia and New Zealand Banking Group Limited (ANZ) ABN 11 005 357 522. MBSAAT01CH ANZ4463/5/5 ANZ016992

More Convenient Banking





L-R:  
Nick Partalovski,  
Leanne Gourley,  
Basil Risteveski,  
Chris Hurley,  
Mark Simpson,  
Bernadette  
Rosewarne.

## Family Law Worries?

Come in for a free chat

**RISTEVSKI**  
LAWYERS

1 High St., Drysdale  
(old Post Office) Ph: 5251 3453

**Drysdale residents have a long and successful association with Risteveski Lawyers for over 25 years.**

The team at Risteveski Lawyers consists of ten staff, of which three are solicitors and two are law clerks. Basil and the team at Risteveski Lawyers have considerable experience in advising and representing clients during important and stressful situations.

Risteveski Lawyers provides a range of services to satisfy Drysdale residents' legal needs. The staff have an in-depth knowledge of the town and the legal issues confronting its people. These areas of work include conveyancing, wills, probate, family law, estate planning, powers of attorney, business law, litigation and court work.

If you are interested in discussing any legal questions that you may have, then feel free to arrange a time to discuss such matters with any of the experienced staff at Risteveski Lawyers.

# A Top Ten Finish in Hobart gives Jeff Beavis a ticket to Vancouver

Jeff Beavis - off to make his mark in Vancouver.



7 June, 2008 in Vancouver where he hopes to improve on his result from last year's event in Hamburg.

**Be sure to cheer Jeff on if you see him around the Bellarine Peninsula!**

**Good Luck Jeff!**



In what proved to be a very challenging and exciting course, Jeff completed the 1.5km swim, 40km bicycle ride and 10km run in a total time of 2:24.56 to be placed 10th in his age group - his best result to date.

A two-lap swim along the docks was followed by a multi lap bicycle course, which was quite hilly and twisty – great for spectators! The athletes were then able to 'rest' their legs somewhat as the run course was relatively flat!

Jeff will now step up his training in preparation for the race on Saturday,

A fantastic effort at the Hobart International Triathlon on 17th February 2008 has resulted in Jeff Beavis being named on the Australian Team for the forthcoming World Triathlon Championships to be held in Vancouver, Canada in June 2008.



Owned and managed by local artist Dr Gillian Turner, Artorial is an Arts Industry business that includes Studio 22 – a working artist's space and future gallery; tutoring for VCE Studio Art practice and theory; individual and small group tuition in drawing, painting and art history; and original artworks and handmade cards for special occasions.

Gillian is an experienced educator and practising

artist who recently moved into the Clifton Springs /Drysdale area, and is eager to be involved in the local community. She has twice worked as Artist in Residence at the Arthur Boyd Studios, Bundanon, NSW, and held a successful exhibition at the Geelong Gallery in November 2006.

Studio 22 will be open for visits (by appointment) from July, and Gallery 22 will open later this year.

**To discuss VCE tutoring, individual/small group tuition, or to purchase original artworks, please contact**

Gillian on 03 5253 2851 B/H  
Email: [drgturner@optusnet.com.au](mailto:drgturner@optusnet.com.au)

# The Health Exchange



## Family Services through Bellarine Community Health

By Georgina Malady

Bellarine Community Health has a clear objective to be an effective service to children and families. We service the five main communities of Point Lonsdale/Queenscliff, Ocean Grove, Drysdale/Clifton Springs, Portarlinton, and St Leonards/Indented Head on the Bellarine Peninsula.

The main objective is to support families during difficult periods. There are many challenges that family's experience and these may include;

- **parenting difficult children**
- **coping with the higher cost of living and managing financially**
- **relationship breakdown between parents**
- **relationship breakdown between children**
- **step parenting challenges**
- **loss of a loved one**
- **post natal depression**
- **substance use and abuse**
- **violence and aggression in the home**
- **how to deal with moody adolescents**

This list can include all sorts of life challenges.

Bellarine Community Health workers support families by helping parents develop strategies to better manage their family's situations, even under pressure. We work closely with children, their behaviours and their concerns.

As an outreach service we are able to travel to the family home in order to do our work. Similarly, we are able to make visits to schools to see children and to seek extra support from teachers and school staff. Families can also make appointments at any one of our five sites. Bellarine Community Health works closely with many other community service providers to assist families with different methods of resolving issues.

Our priority is to manage any Child first referrals we receive from Bethany Community Support in Geelong. These referrals are directed to Bellarine Community Health as we are locally based and have a clear understanding of the local issues facing families on the Bellarine Peninsula.

Bellarine Community Health is committed to servicing the local community and is proud to embrace Bellarine Peninsula children and families in seeking constructive solutions.

### Letter to the Editor

*Congratulations to those involved with the production of the Messenger.*

*The attractive layout, interesting articles and profiles accompanied by good, clear photos make it a fine community publication, obviously well supported by local businesses.*

**Ray Austen**

## William Sheahan Funerals

*incorporating*



**5251 3477**

*All hours*

*Murradoc Road  
Drysdale*

*'Committed to Caring'*

## Adrian E. Mannix Community Service Award 2008



Adrian Mannix

The presentation will take place on Wednesday 28 May 2008 at the Portarlinton Golf Club at 6.30pm for 7pm start and members of the public are welcome to attend.

This event is proudly supported by the Portarlinton/Drysdale Lions Club, Drysdale Rotary Club and SpringDale Neighbourhood Centre.

The two course dinner costs \$23.00 and tickets are available from the above organizations. This should be a wonderful evening and a great way to recognise the efforts of individuals in our community.



Working with and for the community

- Counselling Centre
  - Foodbank Plus
  - Second Chance Clothing
  - Life Skills Seminars
  - Smile (Support for Single Mums)
- 276 - 290 Jetty Rd Drysdale  
Ph. (03) 5253 2099

## bellarine memories

*for life's significant occasions*

*For pre-paid funerals*

*No hidden extras*

**5255 5500**

Philip Christian

Richard Grimmert



cnr. Grubb Road and Sinclair Street, Ocean Grove  
[www.memories.net.au](http://www.memories.net.au)

# Naomi Bowie

Will guide you through the zoo...



Right- Naomi being presented with her Volunteer accreditation by the President of FOTZ Christina Dennis



Naomi Bowie of Clifton Springs who is in her final year at Deakin, is studying Science for her Biology Major. Along with all her study at Deakin, Naomi is also attending TAFE where she is completing a course in animal studies with a future outlook of working in the animal science area.

Naomi was looking for volunteer work on the website and found that the Werribee Open Range Zoo was offering positions for trainees. Later she successfully answered an advertisement from the zoo in the Herald Sun newspaper.

Information and interview sessions commenced and Naomi was accepted on the grounds of wanting to participate at the zoo as a guide. She has also been a trainee volunteer for 5 months and is now a fully inducted guide at the Werribee Open Range Zoo.

Her requirements for training were to attend every Saturday, 9am – 4pm for 3 months. During this time Naomi was learning skills about presentation, information about how volunteers can assist and inform the public. The next 2 months were out in the field where

Naomi along with the other trainees, swapped places and became the people under the guidance of an experienced guide where they all learnt the skills of being a guide and learning to deliver the correct information about the relevant subject at hand.

There was an intake of 43 people and all passed with flying colours. They celebrated their success at the Werribee Open range Zoo – 'Kubu River Camp' overlooking the Hippopotamus area with a BBQ and invited family members.

A presentation later took place where all trainees were presented with certificates.

When next you attend the Werribee Open Range Zoo please give a thought to your guide and know that the information that you are receiving has been learnt during an incredible journey for that person, and know how lucky you are to be so well informed about a facility that is revered as a wonderful safe compound for common and endangered animals from Australia, Africa and other parts of the world.

Naomi, being a fully inducted guide is now leading groups throughout the Zoo, enjoying her commitment and meeting other people with similar interests from all over the world, and not only enlarging her own wealth of local knowledge but certainly being informed of conservation situations overseas.

For more information about the 'Friends of the Zoo' please call (03) 9285 9493 or visit [www.fotz.org.au](http://www.fotz.org.au)

## Today I did something for the good of my community.

### I did all my banking.

Whether revitalising our shopping strip, directing profits to community projects or supporting schools, charities and sporting clubs, Drysdale branch is proving that many hands make light work. And just by doing something as simple as your banking, you'll be helping to build an even better Drysdale & districts.

Whether you're banking for yourself, your family or your business, we know you'll appreciate our extended opening hours, genuine service and complete range of financial products and services.

So why not call in and see us at 11 Clifton Springs Road, Drysdale or phone 5253 3192. We're open

Monday to Friday 9am - 5pm, and Saturday from 9am to 12 noon.

Bendigo Bank Limited, The Bendigo Centre, Bendigo VIC 3550. ABN 11 068 049 178. AFSL 237879. (51423-v5) (30/01/2008)



**Bendigo Bank**



[www.bendigobank.com.au](http://www.bendigobank.com.au)

Hi everyone.

My name is Matthew, and I'm a student currently attending Bellarine Secondary College, in year 10. I will be working closely with Nick Chudoschnik, who is a Street Outreach worker, from Open Family Australia, on the Bellarine Peninsula. Welcome to the Youth Page of The SpringDale Messenger, which will focus solely on the youth of the Bellarine Peninsula. It will include upcoming local events you can attend, or be a part of, and issues surrounding the youth in today's society. We will also present information on what's available to you, such as organisations, or social events that you could involve yourself with and how to go about it. Our aim is to provide today's teenage generation with information they would be interested in. So I hope you give it a go, and who knows? You might find something useful that you would like to be involved in! It would also be great if we could get people who are interested in sharing their talents (such as short stories, poetry, artwork etc.) or to ask questions about upcoming events, discuss specific issues, or to just tell us about something great that has happened to you, by sending them via email to [negative.filmimg@hotmail.com](mailto:negative.filmimg@hotmail.com) or drop them into the postbox at the front door of SpringDale N.C. Please attention them to Matt Wade.



# YOUTH PAGE

WITH MATT WADE

## BATTLE OF THE BANDS

On 15 March, at 1pm, at Clifton Springs Primary, the stage ignited as hopeful bands pursued their dreams of becoming true rock stars. The competition was sponsored by The Music Den and Pan Studios, and the winners won recording time with Pan Studios and vouchers for the Music Den! Some of the bands that featured on the day were -

### State of the Art Technology

Small Business - Commercial - Residential

Home Automation - Electrical - Data Security - CCTV - Access Control Audio/Video Distribution.

[www.glrnsolutions.com.au](http://www.glrnsolutions.com.au)

Phone: 0425798788

03 52345234



R.E.C 3297 A.B.N 99 078683691 P.S.B.R 717-637-705

### .The Elements

#### .The Mischievous Toms

The competition was fierce, and it was held for secondary school students on the Bellarine Peninsula. The bands mentioned above were both from Bellarine Secondary College. I had the chance to talk to The Elements whilst they were rehearsing before the big show. Who are The Elements? They've been together for about a year, and they are: Zac Sheperd, Bella Pinto, Sara Drew and Jake Smitt.

#### How did your group start?

Well, we were learning guitar together (Zac, Sara and Bella) and Jake was in our music class at school. So we all had similar interests in music and starting up a band.

#### What songs do you plan on playing?

Whatever we feel like at the time. It's sort of undecided at the moment. I think we'll be playing a mixture of genres.

#### What's your advice for bands that want to enter, but not sure if they should?

You should definitely do it. It's a whole lot of fun. It's also a great learning experience for anyone starting out like us.

We sincerely hope that all the bands that entered had a great time, which I'm sure they did, and that this encourages others to get involved with other things they might be interested in.

Matthew Wade

## Youth Foundations comes to the Bellarine

Youth Foundation Victoria is a new initiative in which young people come together and work out what the young people of their community need. The aim is for young people to have input into the types of projects and activities their community are offered.

Glastonbury Family Services has been lucky enough to be named the Lead Agency in making this exciting project happen on the Bellarine. The project will employ a facilitator 2 ½ days per week for 3 years and they will be based at Bellarine Community Health Centre.

The Youth Action Committee will also be responsible for raising funds from local businesses to add to the pool of brokerage money which also is attached to the project.

It is very innovative, and Glastonbury Family Services and Bellarine Community Health are certainly looking forward to being a part of this exciting new experience.

For further information please contact Naomi Madigan or Mel Martinelli on (03) 5222 6911



*Update on art...  
on the peninsula*

## Atmospheric Journeys



Visitors to the 'Atmospheric Journeys' viewing a piece by Sara Keranen

The recent exhibition, Atmospheric Journeys, by the three well-known Bellarine artists Annette Playsted, Sara Keranen and Elizabeth Towers, succeeded in attracting a large crowd over the three days of the display. The Springdale Hall was an outstanding venue for the exhibition.

Author and artist Nan Bodsworth, who opened the show, commented on the distinct approaches utilised by these three artists, but when displayed together, created an harmonious display.

The works chosen celebrated the diverse natural beauty of our region and successfully captured the inspirational land and seascapes of the peninsula.

## ATTITUDES 5



Once again the 'Attitude' group of artists had their regular two-month exhibition at The Portarlington Mill during the months of December and January. This highly successful and popular exhibition has become a 'much looked forward to event' for visitors to Portarlington, many of who have visited every year for the past five years. This years exhibition (the fifth), featured the regular 'Attitude' artists: - Susanne Johns, Jenny Lester-Smith, Dresley Robins, Julie Morison, and Kaye Clancy plus two guest artists, Roy Johnson and Marie Bedford. The guest artists, Roy and Marie brought a new, fresh approach to the exhibition with their sculptures and silk painting.

The chosen charity this year, which was The Bone Marrow foundation.

# It's all great Music @ The Deakin Café



DRAGON REMEMBERS - is a special two hour concert in two parts.

Firstly, Dragon plays the songs of their friends, brothers and colleagues who have passed away. The songs include Billy Thorpe's, 'Most People I Know', Slim Dusty's 'Lights On The Hill', Peter Allen's 'Tenterfield Saddler' and Marc Hunter's 'Big City Talk' as well as other great Australian songs like 'Blue Day', 'Don't Change', 'Short Note', 'Errol', 'Streets Of Your Town', 'All My Friends Are Getting Married', 'Bad Boy For Love', 'Long Way To The Top', 'Staying Alive' and 'Don't Dream It's Over'.

In the second part, they play the Dragon hits, including 'April Sun In Cuba', 'Rain', 'Still In Love', 'Celebrate', 'Dreams Of Ordinary Men', 'Young Years', 'Are You Old Enough' and 'Speak No Evil'. Live on stage is Mark Williams (vocals and guitar), Bruce Reid (guitar and vocals), Todd Hunter (bass and vocals) and Pete Drummond (drums and vocals).

ACHTUNG BABY - U2 Tribute Sensation

U2 has no doubt touched almost everyone in one way or another, whether it be through their music, live performances or charity work, we have put them close to our hearts. Since 2004 Achtung Baby has performed in front of thousands of U2 fans across Australia.

With an extensive and ever growing repertoire ranging from the Boy album through to the How To Dismantle An Atomic Bomb album any music lover will be captivated.

Achtung Baby delivers a full costume show incorporating dialogue and concert events such as The Edge and Adam Clayton exchanging guitars for the song '40' from the latest U2 DVD Vertigo Live From Chicago to enhance the authenticity of their performance.

## Deakin Waterfront Café

*Memories... not just music*

### ACHTUNG BABY U2 TRIBUTE SENSATION

### DRAGON ALL THEIR HITS!



Are you old enough to party with the mighty DRAGON? Special 2 hour show with tribute to Aussie friends & colleagues. Truly a night not to miss!

Tickets GPAC (03) 5225 1200

Western Beach Rd. Opp Smorgy's on the pier.  
[www.acornproductions.com.au](http://www.acornproductions.com.au)

Group Table Bookings  
(03) 5247 1986

## Drysdale Ladies View Club



New committee members L-R:

Christine Scott, Laurel Greenhough, Gloria Kivimets (president), Wendy Simpson, Sonia Pearson.

**DO YOU KNOW?** That your area is home to an active, friendly club for women, a mutually supportive group who are part of a nation-wide network of VIEW Clubs? We are non-political and non-sectarian. We usually meet on the fourth Friday of the month, but this time, because of Anzac Day, we will be meeting on Friday, 18 April, at 10.30am, for an 11am start. This is followed by our popular Trading Table and an enjoyable social lunch, with an interesting Guest Speaker drawn from a wide spectrum across our community. But the most important aspect, especially for newcomers to our area, are the friendships made and the fun to be had along the way!

Our Committee has two Program Officers, who organize a whole range of outings

and activities during each month, and we can gather together groups (with car-pooling) to attend VIEW Clubs regional Area functions, including the Birthday celebrations of our neighbouring Clubs. We are pleased with our lovely new venue, in the private Function Room at The Leopold Sportsmans Club, 135 Kensington Road, Leopold.

We are proudly sponsored by The Smith Family organisation, and we are happy to support their remarkable 'LEARNING FOR LIFE' program, which is proving so successful in assisting disadvantaged school children to participate fully in their school activities. We believe that encouraging disadvantaged children to want to remain within the educational system, does enable them to break out of the poverty cycle of welfare dependence, by giving them a chance to gain training for better jobs. This program is active in the Geelong and Bellarine regions, with over 600 children, with numbers increasing as resources allow, being assisted. You have probably heard of it, and seen items about this national initiative in the media, as it has a growing sponsorship.

**For more information about our Club, please phone either  
Gloria (03) 5253 3256 or  
Wendy (03) 5257 1009.**

## Funeral Information Options & Advice

Long time Bellarine Peninsula resident and Funeral Director, Helen Trigg, can help with all your funeral inquiries and information on local cemetery and cremation options.

Obligation free advice on all aspects of pre-planning a funeral is also available.

Call Helen for a no obligation appointment on (03)5221 4788.



**Tuckers**  
Funeral & Bereavement Service  
Grovedale, Lara and Geelong West

[www.tuckers.com.au](http://www.tuckers.com.au)

## Keith Purcell Car Sales

165A Fyans Street Geelong South Vic 3222



Ph: (03) 5221 6355 Mob: 0418 554 011

## Drysdale Senior Citizens Club

First we would like to apologise for a mistake in last months edition. We said it was our 40th birthday and it was our 39th birthday. Sorry about that.

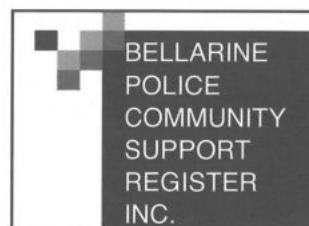
Monday, 7 April we have Bingo. Eyes down at 1.15pm, followed by the Trading Table and afternoon tea. The prizes are not big, but we have a fun day.

Tuesday, 8 April we have a trip to Gentle Annie in Deans Marsh. The cost is \$7.50 for the bus and you buy your own lunch. We leave from the club at 10.15am and should be home by 4pm. We only have small buses, so please put your name on the list early, or ring Esther or Mary on (03) 5251 2983.

We have a lovely club and very friendly members. So, don't sit at home, come up and see what we do. We will make you welcome. We have a few sick members and a few waiting to go into hospital and we hope it won't be long before we see you back fit and well.

**Esther and Mary**

**REMEMBER!  
HIGH STREET  
DRYSDALE  
IS ONLY  
50KM....  
PLEASE  
SLOW DOWN.**



**"What is the Bellarine Police Community Support Register"**

**NEED TO KNOW MORE?**  
Telephone our office on **5255 3968**  
weekdays between 9.30 and 12 noon

Brochures and Registration Forms are available at Pharmacies on the Bellarine Peninsula.

# 'Welcome to our Garden'



**Kaye Clancy & Lindsay Wright** - 'Views' End' Scotchmans Road.

Our garden here at Views' End was started in 1993. It was originally set up as a high maintenance garden that needed heaps of water. Over the eleven years that we have lived here we have made many, many changes. We are very interested in conserving our water so this means almost no watering other than the rain that comes from the sky from time to time and our recycled water from washing and the shower. Every year since seems to get harder for gardeners. It has been a challenge for the past four or five years.

A few years ago we came to realise that we could no longer justify the lush cottage garden that we started with eleven years ago. The garden at the moment is in transition. Last year was a challenge for all gardeners. I was surprised at the amount of plants that actually survived that horrendous summer.

Apart from all the hard times we are still drawn to the soil and what we can now grow, lots of gray foliage, succulents, grasses anything that does not need water. The only exception is of course the vegetables. Our water allowance is used to grow all the things that we love to eat, lettuce, spinach, tomatoes, cabbages, basil and zucchinis. We use no chemicals, it is better to build up the soil where healthy plants can grow.

Our program is to use plenty of manure and mulch all year around. Our only spray is garlic spray which we use on seedlings. **Garlic spray is made by boiling up whole garlic cloves in water, when cool strain through a sieve and dilute with water.**

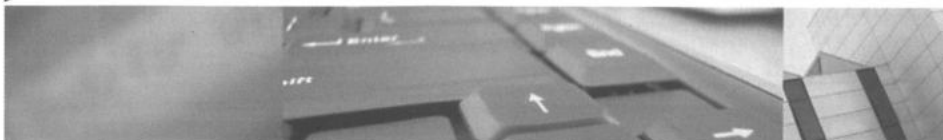
Our beautiful chooks are put into A-frame cages during the day and are moved around the garden to eat up all the bugs.

We have learnt a great deal from other gardeners and are always pleased to hear any new ideas.



chartered accountants

scott cleary & co



- ▼ Tax Returns
- ▼ Small Business Advice
- ▼ BAS Returns
- ▼ Investment Advice

72-76 Ryrie Street, Geelong PO Box 795, Geelong, Victoria, 3220  
Tel: 03 5224 1133 Fax: 03 5201 1222

Drysdale office - CNR. OF SPRINGS RD. & HIGH ST., DRYSDALE  
[www.scc.net.au](http://www.scc.net.au)

## Fundraiser Featuring:

- Sarah Carroll • The Gems
- Comedy Duo "Ted & Ethel"
- D.J. Slav • Utopia

PLUS AUCTIONS throughout the evening  
**Saturday May 10th 2008**  
7pm til Late

Drinks & Food Available  
**The Potato Shed, Drysdale**

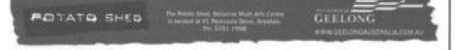
**Tickets \$25 each**  
Available from the Potato Shed  
on 5251 1998 or any City Service Centre.

We are still after auction items if you have an item to donate please email us  
[jacobsnight@hotmail.com](mailto:jacobsnight@hotmail.com)

Cash donations can be made at the Ocean Grove Branch, Bendigo Bank.

All profits from this evening are going towards helping Jacob and his family.

For further info or enquiries email:  
[jacobsnight@hotmail.com](mailto:jacobsnight@hotmail.com)



## 'JUST VINTAGE'

Gifts, Statues, Incense and more

Open: 9am -3pm  
Closed: Tuesday & Wednesday



5 Mortimer Street (Off Murradoc Road)  
DRYSDALE Phone: (03) 5251 3081

# A Cook's Tale

Sara Hussen Benn trained at the Ecole Ritz Escoffier in Paris and cooked authentic French food.  
For more information email: [thestationbandb1@bigpond.com](mailto:thestationbandb1@bigpond.com) or call Sara & John Benn on (03) 5281 1667



Sara Hussen Benn

## Winds of Autumn

The Autumnal wind in the willows stirs the Cook with hints of hampers, baskets, paper bags and emptied Christmas boxes. The Cook feels Mole's unrest and desires, like him, to be free! Like Toad the Cook longs for the Open Road. The Cook hunts in the larder for that ripening cheese that has already oozed from its napkin. The ham waits for exciting events. The Cook peels off its skin, cuts diagonal patterns in which to poke cloves. She The Cook is momentarily the present Queen Elizabeth ordering her favourite picnic victuals "lobster mayonnaise, cold trout, plover's eggs, cold duck, chicken, lamb cutlets, ham and tongue, a selection of sandwiches, a choice of some four desserts and Parisian pastries". (1) Out of breath from the singing and with stomach rumbling in anticipation, the Cook prepares the crowning touch, the fruit cake – peeled, blanched slivers of almonds tossed in smouldering butter, which when done are plunged sword-like into the top and sides of the cake. Oh, the open road, the open road. The Cook tenderly envelops the ripe peaches one by one in fresh tissue paper. The Cook's final consideration, a pressed steak sandwich (made by stuffing the emptied entire crust with underdone, juicy, still warm steak weighed down by pots of

jam) or dressed crab in its shell. Oh, the open road, the open road! The Cook decides to sing the song of the hamper as the lids are gently pushed down to make captive all the fodder bursting and pushing and leaping to escape – the throb of the vehicle is everything – the Cook is off answering the call of the wild, the free and the brave.

**APRES LE PIC-NIC**  
(The Return of the Ham, the Cheese and the Bread)

### CROQUE – MONSIEUR

Lightly coat with oil 2 slices of bread which the crusts have been removed. Spread Camembert on one of the slices, cover with slices of ham, then place the second slice of bread on top. Brown on a grid in a preheated oven 240°, or under a grill.

### CROQUE – MADAME

A croque monsieur with an egg on top. (2)

(1). *Dinner at Buckingham Palace 'Charles Oliver'*

(2). *Larousse Gastronomique*

## let's cook... with kerri



### review

The Halloumi was smooth and blended beautifully with the full and fruity flavours of the salad. A great entrée

courtesy  
| kerri allen  
| indulge on harding  
| portarlington

### Ingredients

- Seasoned Flour
- 500 grms Halloumi (Goats Cheese) (Purchase from Bella Fruits, Drysdale)
- 150 grms baby Spinach
- 2 baby Fennel
- 3 large peeled & segmented Oranges
- Seeded Mustard dressing
- Vegetable Oil

**Prepare salad ...**  
Peel and segment oranges, use base of fennel only and shave thinly, add baby spinach then place all ingredients into a bowl, sprinkle with seeded mustard dressing and put aside.

**Prepare Halloumi ...**  
Slice Halloumi into 5mm wide pieces and coat with seasoned flour. Fry in hot oil about 30secs a side only.



Indulge on harding

**AWARD WINNING**  
*Quality Butcher*  
Peter Hommelhoff

**HOMMY'S QUALITY MEATS**

For something new and different

16 High Street DRYSDALE 3222  
Phone 03 5251 2270

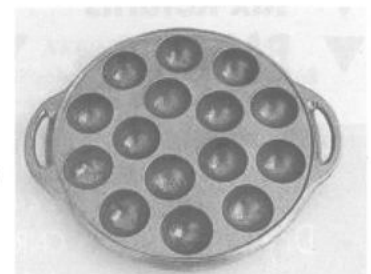
Enjoy the view...  
Breakfast All Day • Lunch • Dinner

**Indulge**  
onHarding

Gluten - Free Produce  
Open Wed-Sun • Breakfast • Lunch • Dinner  
Open 7 Days December to January  
(03) 5259 1999  
1a Harding Street Portarlington

## gem irons - out of the cupboard

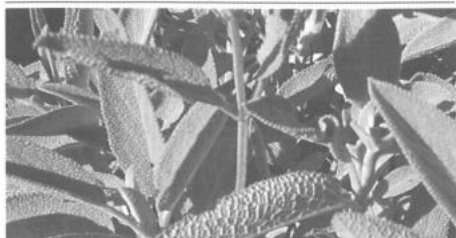
If you have gem irons tucked away in the cupboard well! .... get them out and cook your muffins in them. Heat the irons in the oven as it warms up. Place the irons on a heat resistant surface, brush quickly with melted butter, or spray a non-stick spray, then drop in the mixture from the side of a dessert spoon. The cooking time will be shorter than medium muffins.



about Herbs

# - SAGE

Botanical Name : *Salvia officinalis*



Garden Sage is a strongly flavoured small evergreen shrub which, if used carefully, can be added to many recipes.

Years ago it was mainly used as a remedy for liver ailments and as a general tonic.

Sage is a small shrub 30-45 cms high. The leaves are narrow, pale and grey-green with a rough texture.

The flowers are soft purple. Sage is often used with roast pork or sprinkled on stews. Chopped fresh leaves can be added sparingly to salads, cheese cream spreads, tomato dishes and stuffing for stuffed onions. Use in fruit drinks, wine or cider.

# - CHIVES

Botanical Name : *Allium schoenoprasum*

An important herb in the kitchen, chives have a mild onion flavour which makes a superb seasoning for many dishes. They are hardy perennial plants and narrow and grasslike hollow leaves growing from clumps of tiny bulbs. Chives make a good edging plant to the herb garden and also in container and indoor plant.

Chives will do well in most soils but do best in a light rich damp soil.

Chopped chives can be sprinkled on broths, salads. Blended with cream cheese or butter and used as a topping on baked or boiled potatoes.

## Bay Snapper with crushed Kipflers, Beans and Lemon Dressing

Courtesy Kalamata Café

### Ingredients (for 4 people)

- 4 x 180gms Snapper – skin on
- 50gms Plain Flour
- Pepper & Salt
- Lighthouse Olive Oil
- 12x medium Kipfler Potatoes (washed)
- Half onion finely chopped
- 2 Cloves roasted garlic
- Juice of 4 Lemons
- ¼ fresh Chilli – deseeded, finely chopped
- Lighthouse Lemon Oil
- 24 stringless Beans, topped only

### DRESSING

Combine lemon juice, chilli, salt & pepper with Garlic cloves. Add 120ml Lighthouse Lemon Oli, shake well before serving.

### KIPFLER

Clean and parboil Kipflers until just tender. Allow to cool, crush lightly in a bowl with back of fork. Toss with onion, salt and pepper and Lighthouse Olive oil and roast in a hot oven for 15-20 minutes until golden.

### FISH

Score the skin of the fish with a sharp knife, pat skin with paper towel and dust skin only in seasoned flour.

Heat oil in the pan and sear fish skin side down until golden. Turn fish over and finish in hot oven for approx. 6 minutes.

Whilst fish is finishing in oven, blanch beans in lightly salted water until just tender.

### TO SERVE:

Spoon generous serve of Kipfler into the centre of the plate, lay beans across potato and gently place the fish on top.

(See photo).

Dress generously with lemon dressing and a fresh lemon cheek. Garnish with deep fried Celeriac shavings or fresh herbs.



## Lighthouse Olive Mill Shop Open for Business

The new Lighthouse Olive Mill Shop is open 7 days a week 10am to 4pm.

The focal point of the shop will be our range of olive oils. We will be also stocking a range of spices and herbs, jams and chutneys, some local cheeses, soap and other body care products made with olive oil and giftware.



## Annual Olive Oil Festival - A great day out

Our annual Olive Festival will be on this year on the 7th June. A great day for all the family with tastings of local produce and wines, food, music and entertainment. This year to be held at Kalamata at Lighthouse Olive Grove, 650 Andersons Road, Drysdale.

**You don't have to travel out of town to buy your FRESH FISH shop locally...**

- Fresh and frozen • Wholesale and retail
- Wide selection of ocean and local fish
- Fish • Prawns • Crayfish • Oysters & more...

PHONE IAN & DIANNE YOUR ORDER NOW!

*Bellarine Seafoods*  
 Opening Hours  
 10am-5.30pm Mon-Fri  
 NEW TIMES - SATURDAY  
 9am-5pm Saturday  
 7 Mortimer Street  
 DRYSDALE (03) 5251 3397

## The Drysdale

COFFEE • LUNCH • DINNER  
OPEN 7 DAYS

Lunch & Dinner  
Reservations (03) 5251 2301

- Sports Bar • TAB • Kids Playground
- Alfresco Beer Garden

Drysdale Hotel  
High St DRYSDALE



*Kalamata*  
at Lighthouse Olive Grove

CELLAR  
DOOR  
NOW  
OPEN

Kalamata Café serves casual food that is inspired by the islands of the Mediterranean. Enjoy a meal and the view in the tranquility of the olive grove. Olive Oil Tastings at Kalamata.

650 Andersons Road, Drysdale Vic 3222

Open 7 DAYS 9am to 5pm. info@kalamatacafe.com.au www.kalamatacafe.com.au



*Continuation of Richards story from the March Issue.*

## A little loving at the Taj....



*Left: Carol and husband Glenn celebrating their 24th Wedding Anniversary at the Taj Mahal*

*Below: Elephants decorated and majestic*



Our driver did a terrific job dodging them with our van and we dodged their poos with our feet!

**"The Taj Mahal exceeded our expectations"**

We started in the huge city of Delhi, with its 14million people and travelled by train to Agra.

I've just returned from India. The henna tattoo on my hand is slowly fading but the memories of this wonderful country will stay with me forever. A group of 12 of us travelled through Rajasthan staying mainly in Havelis (old mansions that have been turned into hotels), palaces and forts.

The accommodation is very eclectic, the hot water doesn't always work and the decoration is very over the top. A small price to pay for the incredible character of the places.

The people were very friendly with a terrific sense of humour, very similar to Australians. We felt safe the whole way through. The cows on the roads were probably the most threatening part of the trip.

The Taj Mahal exceeded our huge expectations and Glenn and I celebrated our 24th wedding anniversary there, rather by good luck than good management. There is so much roadwork going on in India so the journeys between towns by road were slow going. This made the trip really interesting as we got to travel slowly through the villages. The women work on the roads dressed in their beautiful bright saris. We travelled through Rajasthan touring the amazing forts and palaces, eating fantastic food and kingfisher beer. (The non-curry eaters managed to find a limited continental menu). We searched for tiger in Rathambore National Park. Unfortunately not successfully but we did manage to see Sloth Bear, Deer, Antelope and Mongoose. We also saw more than 90 bird species.

The Indian economy was helped by us buying handicrafts, fabrics, clothing and jewellery.

The Commonwealth Games will be held in Delhi in 2010 and there is a huge amount of work to be done to get the roads, public transport and airport up to scratch. This is really helping the locals by creating employment and hopefully a better infrastructure once they have finished. It's a wonderful country to travel to and I certainly will be back, hopefully next time to see the elusive tiger.

My sincere apologies to Richard Barris for incorrectly calling him Richard Burns in the March article.

In November 2007 Richard returned to Mali, this time staying with the headmaster. A housekeeper did the cleaning and cooking however Richard insisted on being responsible for his own room, shower etc, as he said Aussie males do that. Meals each day consisted of fish rice and curry resulting in a weight loss for Richard of 5kg. The very hot climate forces most people stay inside in the afternoon, coming out around 5pm to sit in the shade of the trees and chat. Work begins very early in the mornings and continues by floodlight in the cool of the evening.

Much progress had been made with the completion of 1,010 new houses some donated by the Australian people. A new sewage system donated by the Japanese Government, a new hospital, a new school, a new fish market and a diesel generator for electricity were some of the many improvements. A sign on each new construction site shows where the money has come from. The government wanted to take charge of the money raised however fund raising groups decided to send representatives to see that the money went to the correct place.

Friday and Saturday are the weekend so children are allowed to swim on Fridays but only if they covered up. Sunday marks the beginning of the new week. Children begin school at 5 years with equal opportunity for boys and girls in schooling. Primary school children school begin at 1pm closing at 5pm. Mums carry their child's UNICEF backpack to school for them. Primary school children also wear a school uniform. Such is the eagerness to learn that extra classes are held free of charge at the weekends. It may be a battle for some families but if dad has a job, education for their children is paramount. When Richard first went to Mali only 2% of girls wore headscarves now all girls are head scarfed, as there is a belief that the Tsunami was a wake up call for Muslims.

Richard plans to return in 2 years at his own expense to hand deliver first aid kits, wheelbarrows, books and other essential items.

Thank you Richard for a wonderful insight into life in the Maldives after the Tsunami.

Yours in friendship  
**Lesley Jones**

## BENEFIT FROM OUR WORLD OF EXPERIENCE



At Harvey World Travel we know that it's not a great deal if it's not a great holiday, and no matter what your budget or where you want to go, our dedicated consultants are waiting to share their knowledge and experience with you.

**WINNER, 2006 OFFICE OF THE YEAR**

**Harvey World Travel Drysdale**

Shop 2A, 6 High Street, Drysdale • Phone (03) 5251 1125  
Email [drysdale@harveyworld.com.au](mailto:drysdale@harveyworld.com.au)



**GREAT SERVICE GREAT HOLIDAY!**

# Drysdale Community Bank on Target

## An Update on the Drysdale Community Bank



L-R:  
Chris Reymers  
and Bendigo Bank  
Manager, Drysdale  
Craig Taylor

On the 25 October, 2007 an information evening was held for persons interested in establishing a Community Bank Branch in Drysdale.

Directors from the Bellarine Community Bank met with members from the Drysdale community.

At this meeting forms were handed out for people interested in forming a Steering Committee to complete and return at a meeting on 6 November, 2007.

At the meeting held on 6 November, details of the operation of a community bank were explained and the steps to be taken to form a community bank detailed and an idea of timelines were discussed:

**Step 1:** The establishment of a Steering Committee

**Step 2:** Training of the members of the Steering Committee.

**Step 3:** Awareness campaigning and handing out and collection of pledges.

The Steering Committee was elected at the next meeting on 29 November and training meetings were held over the next two weeks.

The Awareness Campaign started on 18 January with members of the Steering Committee handing out information at various locations in Drysdale every Friday morning and afternoon and again on Saturday morning. As of today 7 March many pledges have been received with pledges coming in at an increasing rate. It is anticipated that the Drysdale Community Bank could be operational in July.

Anyone holding pledge forms but not submitted these yet, is encouraged to do this as soon as possible so that the next stages can be completed.

Remember, a community bank can only be successful if members of the community give it their support.

**Chris Reymers**  
Chairperson  
Steering Committee

## Bokashi Update

Anne Brackley

So far we've picked about 3kg tomatoes, 10 zucchinis a couple we've allowed to grow to enormous to fill a request, 10 corn cobs, 6 lettuces, 10 apple cucumbers, lots of strawberries (they don't last back into the house) and some basil. Am I glad that the garden is almost self sufficient.

I try to ensure that I am home to give the garden water on Tuesdays and Saturday nights and apart from that its about 80 litres of tank water with Bokashi juice whenever I can.

We are working towards a Sunday afternoon information session on Bokashi buckets and how easy it is to use its



Anne's basket of 'Bokashi' raised vegetables and fruits - 'the strawberries never make it inside the house!'

products. We have already had a few people register their interest in attending. **Looking forward to hearing from you if you are interested. SpringDale is accepting the questions and suggestions please phone (03) 5253 1960.**

Extra Bokashi grains is available at SpringDale now for \$15 for 3kgs.

## DRYSDALE CARPET COURT

Large Range of ...

- ◆ Carpet ◆ Vinyl
- ◆ Floating Wood
- ◆ Laminate Floors

Neil Petrie  
03 5253 1855  
0419 519 030  
63 Murradoc Rd Drysdale



## Ray White™

GEELONG

03 5223 2040

When Local Experience Counts!



**Janis Pearson**  
Leopold  
Drysdale  
Clifton Springs  
0428 625 113

[geelong.vic@raywhite.com](mailto:geelong.vic@raywhite.com)

NO MAINTENANCE COMPOSITE

## Decking



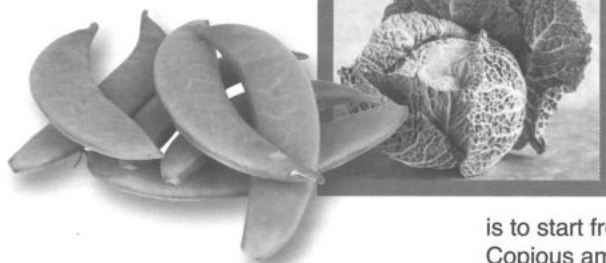
The Deck that:

- does not rot
- does not splinter
- is slip resistant
- is barefoot friendly
- requires little maintenance
- has concealed fixing system and will look GREAT for years

Hunter Building Products  
9 Francis Street Belmont Victoria  
Phone: 0425 805 790 or 0417 591 113  
[www.hunterbuildingproducts.com.au](http://www.hunterbuildingproducts.com.au)



## from the garden gate



lavenders, wallflowers, daisies and some natives. My vegetables are thriving also.

I don't have the traditional vegetable plot, but scatter plantings throughout the flower garden. The secret

is to start from the bottom up. Good soil. Copious amounts of old cow or horse manure dug into my sandy soil helps to retain water. Mulching with pea straw or sugar cane mulch helps to keep weeds under control and limits evaporation.

Vegetables to plant this month - spinach, peas, silverbeet, leek, cabbage, carrot and cauliflower.

Summer has proven to be a challenging time again for gardeners. With tank water, grey water and the two hourly waterings our gardens are surviving.

Not all waterwise gardens just have to be succulents and flaxes.

My own garden consists of roses, irises,

Flower seeds to sow - alyssum, stock, calendula, foxglove and viola.

Are you interested in gardening? Then we are the Club for you! We are a friendly bunch dedicated to all aspects of gardening. Listen to our speakers, visit open gardens and enjoy our great suppers.

**Meetings** - Clifton Springs/Drysdale Garden Club, Uniting Church Hall, High Street, Drysdale, Monday, 21 April at 7.30 pm. All welcome.

**Enquiries** - Lorraine (03) 5251 1660 or Rae (03) 5251 2600.

Happy gardening,  
**Lorraine Wikman** President.



## St. Leonards Garden Club

The St. Leonards Garden Club meets on the 2nd Wednesday of every month, except January and December. The club has been functioning for 26 years. Guest speakers usually attend each meeting to talk about different garden topics and answer garden queries.

Coach trips are organised during the year to various places of garden interest as day trips. Meeting time is 1.30pm at the Memorial Hall in Murradoc Rd, opposite the Primary School. If you have an interest in gardening and prefer not to go to the meetings at night, you may like to join the club.

Alice Richards (Hon. Secretary)  
**(03) 5257 2213**

## Friends of the Bellarine Rail Trail

The Friends of the Bellarine Rail Trail group had a very busy year during 2007, with regular working bees achieving a record number of plantings. With predominately dry conditions prevailing, many hours were given to watering and mulching of both existing and new plantations. Some working bees were dedicated to weed removal and general trail maintenance. But more than 12500 new plantings were achieved, including trees, shrubs and native grasses. Understory planting in existing beds was also a major achievement.

Just to name a few of the species planted, these included trees such as Red Gum, Swamp Gum, Manna Gum, Yellow Gum, Blackwood, Drooping Sheoke, and Common Boobialla, whilst among the shrub plantings were varieties of Salt Bush, Knobby Club Rush, Pale Rush and Hop Goodenia. Grasses planted included such well-known species as Dianella, Poa, Lomandra, Kangaroo Grass and Wallaby Grass. But Friends are continuing to place strong emphasis on "plant diversification" so that the trail provides a showcase for a great variety of native species, as designated by the CoGG Vegetation Management Plan.

Groups that we worked with throughout the year were:

Bellarine Secondary College, who planted some 500 trees/shrubs/grasses on the trail near Drysdale Parks Victoria, to complete new plantings at Barwon Heads (not included in above figures).

The National Trust, whom we assisted with a landscaping working bee in preparation for the 150th anniversary celebrations at the historic Portarlington Mill in October last.

All in all, a very satisfying and productive year for this volunteer group who are dedicated to the re-vegetation of the rail trail. We believe that the Bellarine Rail Trail is gaining increasing recognition as one of Victoria's great recreational assets, something to be enjoyed at no cost by walkers, riders, bird watchers, photographers or those just interested in the history of the Bellarine Peninsula - whatever your interest! And we offer a warm welcome to any people who may wish to join our group to participate in a very rewarding joint activity. For further information please visit [www.fbrt.com.au](http://www.fbrt.com.au) or contact Peter Cowden on (03) 5251 3319.

## Bellarine Rail Trail Fun Day Sunday 27 April 2008

A special event is being organized to showcase the Bellarine Rail Trail and encourage participants to get out there walking and cycling. The event is staged at the Drysdale Railway Station and a variety of entertainment, prizes and activities are provided. Registration opens at 8am closes at 9am. Event commences at 9am. For further information please phone **Krystin at COGG (03) 5227 0380**

Rick Paradise

# THE MOWING BLOKE

**(03) 5251 2234**  
Mob 0434 493 123

- All aspects of **Garden Care**
- **Workcover accreditation**



## BELLARINE FENCING Co

### We do Picket & Paling, Fences & Gates.

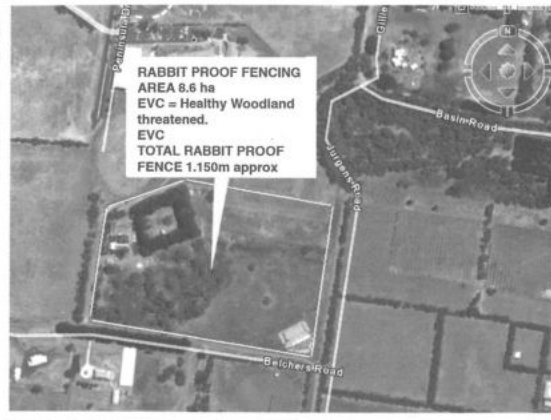
Phone: Andrew & Gayle Baylis  
on 5251 3090 or 0417 544 887



# Bellarine Secondary College Landcare Nursery Rabbit Proof Fencing and Protection Project



TOP : **John Fyfe** - Bellarine Landcare Group, instrumental in the project.



LEFT: Map of area that is of concern

The successful completion of the Bellarine Secondary College Landcare Nursery, Rabbit Proof Fencing project was a collaborative effort between a number of organizations.

The Project was initiated out of concern over rabbits harboring around vegetation adjacent to the nursery. This had potential impacts on the indigenous plants being grown in the nursery and also affected roadsides, native vegetation and adjoining property.

An area of 8.6 ha has now been fully rabbit proofed and now infestations within this site can be managed over time in an attempt to dramatically reduce numbers. It is important that an ongoing program continues and that adjoining landholders do their part also. The area includes the

*'It is important that an ongoing program continues'*

Heathy Woodland adjacent to the Bellarine Secondary College Landcare Nursery on Belchers Rd which is a threatened Ecological Vegetation Community. This will help to protect and enhance the values in this woodland.

Also protected was an area of paddocks and vineyard down to Jurgens's Rd. This greatly increased the original total area and provides a larger buffer around the school and nursery.

A small extension will see Jurgens's Rd completely rabbit proofed to The Basin Reserve.

The Bellarine Landcare group, Bellarine Secondary College, City of Greater Geelong and Swan Bay Integrated Catchment Management Committee all contributed to the project in various ways. John Fyfe (Bellarine Landcare Group)

was instrumental in providing the technical expertise required for the fencing and wire netting and dedicated numerous hours of volunteer time.

The City of Greater Geelong contributed 4 rolls of rabbit proof netting along with technical advice, the Bellarine Secondary College supported with the remaining fencing and netting materials.

Conservation Volunteers Australia and Central Victorian Group Training provided volunteer assistance to complete the laying and constructing of fencing. This was a vital component and without this there would not have been the opportunity to launch into such a significant community project.

The project was managed by the Swan Bay Integrated Catchment Management Committee who was able to access and manage volunteer resources. An estimate of the total cost of the project is \$10,000.

With each group and organsiation playing a roll, projects like this one which seem too big to tackle alone, soon become achievable and worthwhile community projects.

**For more information on this and other projects contact Matt Crawley, Bellarine Peninsula Landcare Coastcare Coordinator on (03) 5257 4426 or [matt.crawley@queenscliffe.vic.gov.au](mailto:matt.crawley@queenscliffe.vic.gov.au)**

foot  
health care  
for all ages

**Michael A. Nicol & Associates**

- General Consultations
- Diabetics & High Risk
- Orthotic Therapy
- Nail Surgery
- Veterans' Affairs
- TAC & Work Cover

**03 5251 2958**  
27-29 High Street  
DRYSDALE 3222

# PAINTING?

**For the BIGGEST Paint and Accessories store on the Peninsula...**

**MIGHTY HELPFUL™ MITRE 10 WALLINGTON**

**OPEN 7 DAYS**

**CNR. GRUBB RD & BELLARINE HWY WALLINGTON 5250 2855**



## health & wellbeing



## Pole Walking in Portarlington

Pole Walking, a fun and convenient physical activity is soon to be offered in Portarlington. This exciting, new activity provides many benefits including:

- Burns up to 40% more calories than without walking poles
- 90% of total body muscles used – more of a workout
- Increase in stability and balance – (from '2 feet' to '4 feet')
- Reduces impact on painful joints such as knees, hips and back
- Improves cardio-fitness by 20-46%

**A 'Come-&-Try' session will be held in the coming months. Register your interest in Pole Walking now by phoning SpringDale Neighbourhood Centre on (03) 5253 1960, or keep your eyes peeled for more information soon!**

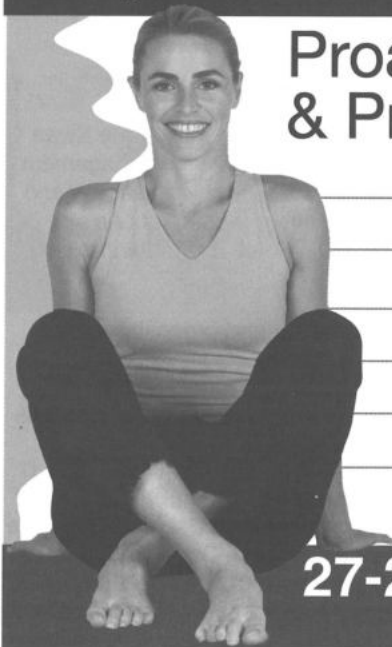
## Drysdale Health Group

### Proactive, Preventative & Professional

- Physiotherapy
- Podiatry
- Psychology
- Myotherapy
- Exercise Physiology
- Acupuncture
- Pilates

Businesses are separate entities and located at

**27-29 High St Drysdale**  
**(03) 5251 2958**



## KNITTING & CROCHET GROUP



Sounds dull? Well, believe me it's not! We are a small group, but hope to become much bigger, and we can offer a wide variety of talents.

If you are feeling creative, we have people who can help you design and write patterns for your own projects. If not, we have people who can help you decipher any pattern you may bring along.

We have members who are experts at blending colours and one who produces rugs for SIDS at an alarming rate! We also have lots of enjoyable conversation!

So, with all these possibilities, we should be able to cater for anything you may wish to do and we would love to meet you. The group meets every Tuesday afternoon from 1pm-3pm at SpringDale

**Joan Golding**

Take :30. Take 30 for your heart.  
Take 30 for your hips.  
Take 30 just for you.



## Curves

The power to amaze yourself.™

Join Now  
**50% Off**  
Service Fee

[www.curves.com](http://www.curves.com)

Come to Curves and in just 30 minutes get a total body workout on our strength-training and cardio circuit. All with the total support of our trainers who are always there to help you succeed.

5253 3029 Drysdale Village Walk Drysdale

\*Offer based on first visit enrolment, minimum 12 months direct debit.  
Not valid with any other offer. Valid only at participating locations.

## MAGGIE GOVE N.D.

### Bowen Therapist & Naturopath

Member of A.N.T.A.

Drysdale Clinic  
**[03] 5251 1188**

Opening Hours  
**Wednesday - Saturday**  
[Rear of Elegant Profile]





## health & wellbeing

Holiday is a great incentive to try hard at U2

Cara Hitt's commitment to exercise not only rewarded her with the physical appearance as well as the fitness level she desired, but, as a bonus, a trip for two to Bali for one week as the winner of the LOYALTY POINTS SYSTEM at U2 FITNESS CENTRE.

Members are rewarded for their daily exercise pursuits to keep themselves fit, healthy and looking good. Cara had stiff opposition, winning by a margin of only 20 points.

U2 Fitness manager Martha Cormack, has seen many members commit more diligently to their exercise regime when the incentive of a holiday as their reward becomes a reality.

**This years winner will receive a holiday for two to FIJI FOR ONE WEEK!!! So if you have not already joined our gym, what are you waiting for?**



*Top: Martha Cormack presenting Cara Hitt her prize certificate*



*Right: Cara - Winner of the Loyalty Point System at U2*

### Preventative, Cosmetic and Restorative Dentistry

- Teeth Whitening
- Mercury Free Fillings
- Cosmetic Crown and Bridgework
- Dental Implants to Replace Missing Teeth
- All General Dental Services

Reed Dental Centre

Dr John Reed & Associates (ADA)

FOR BEAUTIFUL AND HEALTHY TEETH

New Patients Welcome

27-29 High Street Drysdale  
(03) 5251 1108

187 Moorabool Street Geelong (03) 5229 9779

## BOOK NOW - and REFRESH YOUR LIFE

### Holistic Lifestyle & Nutrition Seminar

Saturday, 19 April at 2pm

- Do you feel tired all the time?
- Do you want more energy?
- Are you stressed?
- Do you want to lose weight?
- Do you want to improve your body for life?

**Our U2 Fitness Plan - outlined in a 2 hour seminar using sound, practical principles and methodology to help you live well.**

**\$59 per person - First 10 bookings receive Dr Tickell's Calorie Comparison Guide FREE**



Visit U2 Fitness and book your place today!

**U2 FITNESS CENTRE**  
**33 MURRADOC ROAD DRYSDALE • PHONE (03) 5253 1795**

## Drysdale Primary School



Everyone had an amazing first term at Drysdale Primary School! The children settled in very well to their new grades and quickly got to know their new teachers. We have another delightful group of Preps this year, who are very eager to come to school and learn.

Even though initially there were some nerves and tears, they have all done an exceptional job at settling into full days at school. Being a Prep teacher I have been very impressed this year at how

organised and keen the students and their parents have been. In the morning they always greet you with a nice big smile on their face.

Everyone at Drysdale Primary was excited about the Bunyip Day and the Bunyip Festival. A special day was held focusing on the Bunyip Festival. The day entailed children rotating as a grade through six different activities involving 'The Bunyip'. At recess and lunchtime, there was lots of fun and exciting activities for them to be involved in. The children had prepaid for the days festivities and were given coupons to participate in up to five of the activities at lunch and recess time.

During the final week of term, the family dance and barbeque took place. Children from each year level worked really hard learning a dance in PE and Music. The children were very excited about performing their dance on the night to their family and friends.

**Danielle Thompson**  
(Drysdale Primary School)

## Drysdale RSL



The Drysdale R.S.L. Sub Branch is seeking new members to increase their membership. There are many (males and females) living in the Drysdale, Clifton Springs surrounds who have served and we are asking you to come and be part of our Sub Branch. Monthly meetings are held on the second Thursday commencing at 1.30pm. Bingo is played on the third Wednesday at 1.30pm and we now have a new Bingo board which is great. The Ladies Auxilliary meets on the first Tuesday of the month at 1.30pm.

**Geoff Wisbey, President.**  
(03) 5251 2470

**Bill Hutcheon, Secretary**

## Drysdale Football Netball Club 2008

What an exciting start to the season it has been with so many enthusiastic faces returning again this year and so many new faces making their way around the courts! This year we've had another huge influx of junior members, which is fantastic and will see us fielding more teams in the local Peninsula netball competition.

Training for seniors began in early January in the form of a boot camp, which has whipped everyone into shape for what will hopefully be a hugely successful year. Junior training started in February with team trials being held for all age groups over the last fortnight.

We are ecstatic with our new 'home' at

our club courts which we would like to thank the City of Greater Geelong for, a much bigger atco shed, should fit a few more bodies indoors on wet days.

A special mention and congratulations to Olivia Wilson on her selection into the Victorian 19&U squad and best wishes for team selections. Also congratulations to the following girls on B&DNA representative squad/team selections: -

11&U – Elizabeth Lowe, Sarah Rushton.

13&U – Brittany O'Dowd, Chloe McDowell, Millie Deeth, Cassie Vincent, Katelyn Mannix, Grace Alsop.

15&U – Caitlin Wiffen, Somer Peters, Hannah Kennedy, Ella Mills, Emily Mannix, Ella Chester.

17&U – Kate Burnett, Hannah Chester, Daina Flynn, Nicole Fox.

**NET, SET, GO** – We will be looking to host a netball program for children aged 5 to 8 years to learn the basic skills every Thursday night from 5.15 – 6pm. For anyone interested please contact Jodi Connally on 0409 954 356.


We wish all our players the best of luck for the season and hopefully we can secure a few more premierships and another club championship in 2008. For any enquiries to the DFNC please email us at [secretarydfnc@yahoo.com.au](mailto:secretarydfnc@yahoo.com.au)

Finally, we would like to thank our sponsors, their support is invaluable to keep us going and growing!!  
**DRYSDALE CLINIC, DRYSDALE FURNITURE REMOVALS & STORAGE, BETTER BRICKS AND PAVING, PROVINCIAL HOME LOANS.**

*There's no place like home at...*

# MATILDA'S

- Furniture
- Home Décor
- Cane Ware
- Giftware
- Casual Living




Closed Tuesdays

**16 Collins Street**  
Drysdale 3222

Ph/Fx  
**(03) 5253 1516**

## Geelong Cleaning Company

- Window Cleaning
- High Pressure & Exterior Cleaning
- Commercial & Builder Cleans
- Move In / Move Out Cleans



**Your local Professionals**

Call today for your **FREE Quote:**  
Ian Day 0425 724 020

## BELLARINE INSTYLE CURTAINS & BLINDS

- Holland Blinds
- Sunscreen Roller Blinds
- Verticals & Venetians
- Roman Blinds
- Exterior Blinds



**1300 559 464**  
3/31 Murradoc Road Drysdale

contact [@instyleblinds.com.au](mailto:@instyleblinds.com.au).

# SpringDale Business Network Breakfast



TOP: Frances Hamblin and Ed Scouller  
RIGHT: Business Network Coordinator Dianne Bennett



TOP: Johnathan Harris and John Murphy  
RIGHT: Melinda Clarke, Katie Halson, Louise Tudbull.



What a great way to start the morning! Bacon & eggs, cereal & fruit, toast, juice, coffee, and a room full of friendly, interesting people to catch up with after the Christmas break.

If you weren't at our first Network Breakfast for the year, then you missed out on all this plus a very informative talk from Work Safe Victoria.

If you are a business owner or manager; perhaps you are new to the area, or just haven't made it to any of our functions yet, please consider this your personal invitation to our next breakfast. There are opportunities to showcase your business and products, and we encourage those who attend to get to know the other

business people in our community. It's good to see both business and personal relationships developing each year.

Our next Breakfast will be on Tuesday, 13 May at 7.00 am. Our guest speaker will be local resident and Business Coach, Janet Schultz. Janet's business takes her all over the world, so she has a wealth of experience to share.

**Would you like to know more about our Network? Please phone or call in to SpringDale Neighbourhood Centre and talk to Anne (anytime) or Dianne (Fridays only).**

**We would love to meet you.**

Drysdale Uniting Church - 2008 the year of anniversaries



**150th Sunday School Anniversary**  
Drysdale Methodist/Uniting Church – will be celebrated on Sunday, 20 April 2008 in the form of an afternoon tea in the church hall, with an opportunity to meet up with past students. Please spread the word to anyone you know who was connected with the Sunday School in the past who may have left the area. The Sunday School still continues today, and is now called KFC 'Kids for Christ' and has 15 regular attendees.

## 10th Worship @ 9 Anniversary

It is hard to believe it has been 10 years since we implemented our 9am contemporary family services. This achievement will be recognised at our service on Sunday, 4 May 2008 when Rev. Rob Gallagher, who instigated W@9, will be our guest minister. We hope to see some former members and ministers back for this service.

**Val Lestrage**  
Publicity Officer

**BELLARINE AUTO SERVICES**  
Quality Mechanical Repairs  
Mortimer St DRYSDALE

- Tuning • Servicing
- LPG Conversion
- EFI • RWC
- Tyres • Batteries
- Licensed Vehicle Testers

Prop • J Pamplin  
[03] 5253 1644

**Repro DRYSDALE motors**  
AUTHORISED SERVICE

All Mechanical Repairs Including  
New Vehicle Log Book Servicing

Nationwide Warranty  
why travel when the best is right here in Drysdale

**5253 1033**  
44 murradoc road, drysdale  
drymot@bigpond.net.au

**MORTIMER PETROLEUM**

**PETROL STATION & CONVENIENCE STORE**  
97 High Street Drysdale Phone 5251 2603  
Petrol, Autogas, Bait & Fishing Supplies

**CAR WASH**  
Open 6.00am -10.00pm

## CORYULE WARD/UPDATE

Cr. Tom O' Connor CoGG / Coryule Ward



Greetings one and all and welcome to the April Springdale Messenger.

Last month I detailed what was happening in your area and here are some updates on the progress of these works.

### i) Cleaning.

If I sound like a broken record (or in this day and age should that be a scratched CD?) I apologise but the dumping of food wrapping and beverage containers at the central City bus stops continues to be a problem.

It is a user responsibility that only time and community pride will help to improve. It is up to all of us to ensure the cleanliness of the bus stops. PLEASE help out and make sure you are not contributing to this problem.

### ii) Bus Shelters.

As mentioned last month, the review of shelters on the North Bellarine routes has finally been completed and is now out to tender.

The final number of shelters and locations / bus stops / all abilities access / general road safety conditions, along with the removal of many of the old, unsightly units, will be decided on prior to end of June, 2008.

### iii) Passenger and public transport road safety issues.

Discussions were held with Minister Neville and VicRoads on the following major issues –

i) Pedestrian crossings, manned and / or unmanned, for both schools and general pedestrian traffic, particularly in the township.

ii) Appropriate roundabout treatment to reduce the continual traffic bank-ups, especially during school start / finish times eg. Grubb Road / Portarlington Road / Jetty Road roundabout.

iii) Deteriorated and dangerous condition of Murradoc / Portarlington / Grubb / Portarlington to Lonsdale roads due to increased heavy commercial and industrial traffic along with inappropriate variable speed zones. The solution at this stage is still under review and is with VicRoads.

### iv) Anderson Road / Peninsula Drive to Princess Street.

Realignment and sealing of this section of road is completed with a crushed rock pedestrian and cycle path separate from the road along the northern side between Gillies Lane and Princess Street.

iv) Inadequate run-offs and returns at bus bays, for both busses and passenger traffic, that create inconvenience to general traffic as well as elderly and disabled passengers. Here again, the solution is under review with VicRoads.

### Drysdale / Clifton Springs Structure Plan

The first public round of community meetings was planned for late in March. Details will shortly be published in the local press and I urge you to come along and actively participate in the future shape and character of our township.

The 3D Virtual Reality modeling is to hand and just needs to be fine tuned to match the Structure Plan meetings timeline.

### Drysdale Library / Geelong Regional Library Corporation

This item will continue to be featured in the monthly report to ensure it is incorporated in the Structure Plan discussions.

As mentioned last month, the intention is for it to be a community hub providing a modern facility and service for all ages and abilities along with an increase in size, improved accessibility, and upgrade to the content and range of services incorporating youth spaces, homework help areas, community gathering and meeting places, as well as the range of print and electronic collections.

### Clean Up Australia Day -2 March 2008

This year's turn up was a great success with new faces and willing helpers to assist Linda Gallus and her team do justice to the area. A job well done by all involved.

### Foreshore Sub Committee – vacancies

Still looking for community minded people willing and able to assist the hard working team. If you can help please check the Drysdale / Clifton Springs website and / or email [tfcsecretary@iprimus.com.au](mailto:tfcsecretary@iprimus.com.au).

### ii) Drysdale Recreation Reserve.

The playing surface at the reserve is going well - a big thank you again to the efforts of Cricket Club and football Club members.

The Clubroom refurbishment is now scheduled to start toward the end of this month subject to approval and acceptance of the archaeological survey AAV ( Aboriginal Affairs Victoria ). Discussions are being held between the football and cricket clubs to share the cricket club facilities during construction.

### General items

#### Street Tree Planting – Bay Shore Avenue

A further 100 street trees are to be planted in Clifton Springs in Bay Shore Avenue. The

planting will be nature strip infill planting only and not in the centre median strip between Jetty Road and Clifton Springs Road replacing trees missing.

The street tree being used for this infill planting is the Red Flowering Bottlebrush, Callistemon Kings Park Special.

The planting of these new trees will take place between late April and mid June using container plants about 1-1.5 metres in height. The Red Flowering Bottlebrush will to about 5 metres in height and is drought tolerant once established.

Further information about the Bay Shore Avenue planting can be obtained from Ian Rogers, Tree Management Officer on phone (03)5227 0827.

### i) 2008 / 9 CoGG Budget planning.

Work is now underway with the first round of budget discussions held late last week.

I would encourage you to contact the Drysdale / Clifton Springs Community Association committee members on those issues you feel are important.

Please do not hesitate to contact me should you have any ideas or suggestions that will help improve on the current programs and processes or you require clarification or further detail on issues not mentioned in this brief report.

Cr. Tom O' Connor  
E: [toconnor@geelongcity.vic.gov.au](mailto:toconnor@geelongcity.vic.gov.au)  
M: 0439 303 537

**FRANK BURGE CARS**  
Ph: 5222 1606  
Fax: 5221 8608  
172 Fyans Street  
South Geelong 3220  
[frankburge@motorsm.com](mailto:frankburge@motorsm.com)

**PROVINCIAL HOME LOANS**  
MORTGAGE ORIGINATOR  
Independent Licensee. 0019  
Rocket Vic P/L ABN 24 081 815 554  
Home Loans... Home Loans...  
Home Loans...  
**Just where do you start?**  
At Provincial Home Loans  
we care about what we do and  
will guide you every step of the way.  
For all of your  
Home and Investment Loan needs call  
Rod Ryan your local Home Loan Specialist.  
Mobile 0419 005 755  
Office 5251 1807 Available 7 days  
Celebrating over 10 years  
of serving the Geelong community.

# Clifton Springs Golf Club



- entertainment, dining,  
golf and more...

new golfing  
membership  
season

**\$145 for  
3 months**



Green Fee  
Players Welcome  
Enquiries to Club

**(03) 5251 3391**

**BACK  
BY  
POPULAR  
DEMAND**

**CREEDENCE  
CLEARWATER  
RECYCLED**

**SATURDAY 31 MAY**  
2 Course Meal & Show  
\$50 per person. 7.30pm

**BOOK  
EARLY!**

members draws  
FRIDAY & SATURDAY NIGHTS  
Friday - all categories  
Saturday - Golfing Members only  
Regular Raffles every Friday Night

**POTS FOR  
GLASSES  
PRICES**  
Friday Night  
5.30-7pm

**MEAL  
SPECIALS**  
Try our fabulous  
Lunches priced  
from \$7.00  
Mon-Fri only

*Sunday Night is*  
**PARMI NIGHT**

Original, Italian,  
Aussie or Hawaiian  
(Served with Salad & Chips)

**Only \$12.00 ea**

*Friday Night is*  
**STEAK NIGHT**

Porterhouse or Rump  
(Served with Salad & Chips)

**\$16.00**

A la carte meals also available

*fantastic views at....*

For bookings  
and further information  
telephone the club on  
**(03) 5251 3391**

**Clifton Springs Golf Club**  
Clearwater Drive  
CLIFTON SPRINGS

*Play  
by the  
Bay*

**Clifton Springs**  
GOLF CLUB

Drysdale **Community Bank**<sup>®</sup> Project

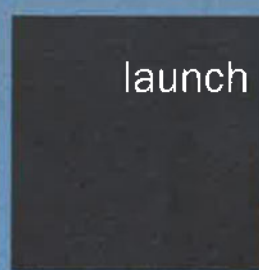
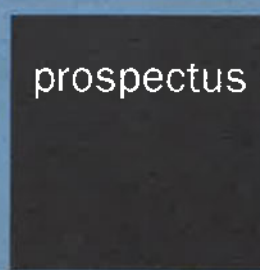
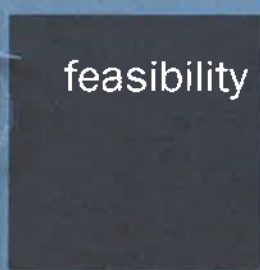
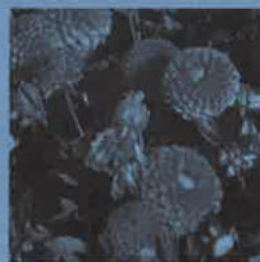
# Drysdale's own **Community Bank**<sup>®</sup> branch

Local money, local jobs and support for  
community projects

To help make Drysdale **Community Bank**<sup>®</sup> Branch a reality contact:

Paul Jones	0419 354 259
Chris Reymers	5251 2145
Craig Taylor	5253 3192 or 0409 554 128

(54576-v3) (7/03/2008)



It's all about working together

[www.bendigobank.com.au](http://www.bendigobank.com.au)