



The SpringDale Messenger

November 2024
Volume 34 Issue 10



ABN 21 404 220 267

Compiled & Published by the SpringDale Neighbourhood Centre Inc.

DRYSDALE FIRE BRIGADE CELEBRATES


80 Years OPEN DAY

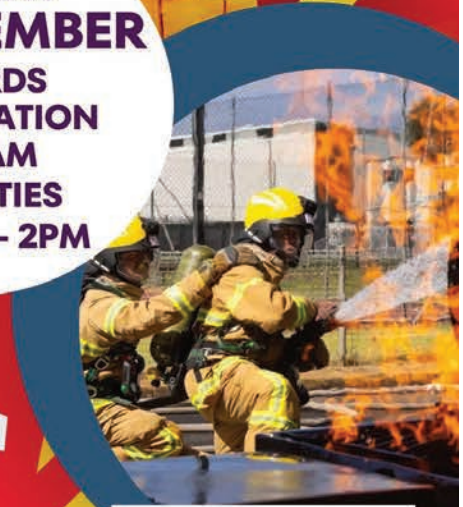
Join us for the 80-year celebration of Drysdale CFA! The event will feature service recognition awards for our dedicated members, fun activities for kids, including the chance to squirt water with a real fire hose and explore fire trucks up close.

Bring the whole family for a day of excitement and community spirit!

- Sausage Sizzle
- Kids Activities
- Captain Koala
- History Display
- Face Painting
- Station Tours
- Fire Trucks
- Awards Presentation

**SUNDAY
17 NOVEMBER**
**AWARDS
PRESENTATION
10:30AM**
**ACTIVITIES
11:30AM - 2PM**

 Drysdale Fire Station- 5-9 Princess Street Drysdale, 3222



NOVEMBER 2024

Community Calendar

SpringDale Community Calendar is a SpringDale Neighbourhood Centre initiative to support the whole community. If you wish to place your event in the calendar and further issues of The SpringDale Messenger please email, write or call the event details to our office.

SpringDale Neighbourhood Centre Opening Hours Monday to Friday 9am-5pm and by appointment.

Friday	1	Movember
Saturday	2	Harvest Basket Veggie Swap Repair Shop @ SpringDale 9am-12noon
Sat-Sun	2-3	Bellarine Camera Club Annual Photographic Exhibition at SpringDale Hall 10am-4pm Humans in St Leonards Exhibition, St Leonards Community Space 10am-2pm
Tuesday	5	SpringDale is closed on Melbourne Cup Day
Saturday	9	Port Breakfast Off the Clock Cabaret - 8pm - Potato Shed Repair Café in Portarlington 9am-12noon
November	11	Remembrance Day
Tuesday	12	Morning Tea @ SpringDale - 10-11am SpringDale Dining Group - Ocean Grove Bowls Club - 6pm The History of Rock and Roll - 10.30am - Potato Shed
Wednesday	13	World Kindness Day
Thursday	14	World Diabetes Day
Saturday	16	Songbirds - Gorgi Coghlan and Anna-Lee Robertson - 8pm - Potato Shed
Sunday	17	80 years Drysdale Fire Brigade Open Day EV and Ebike Expo at SpringDale 1-4pm
Tuesday	19	DCSCA Annual Meeting at SpringDale 7pm
Wednesday	20	SpringDale Lunch Bunch - Leopold Sportsmans Club - 12noon
Friday	22	Festival of Glass Twilight Market Stall applications close
Monday	25	Christmas Craft at Cottage by the Sea 9am-12noon
Wednesday	27	Thanksgiving
Friday	29	Neil Diamond and Dean Martin Tribute Show - 8pm - Potato Shed
Saturday	30	Saint Andrew's Day
Friday	29	SpringDale Annual General Meeting at SpringDale 5pm Festival of Glass Twilight Market 6-9pm
Saturday	30	Scouts Christmas Tree sales at Drysdale Scout Hall - Sat 30 Nov, Sun 1, Sat 7 & Sun 8 Dec 9am-3pm.

Reminder
Bookings &
copy required by
1 November for the
Dec-Jan 2024-25
issue

Coming up in December 2024

Wednesday 4 Potato Shed 2025 Season Launch
Christmas Meals at SpringDale - book in to help or to enjoy

We acknowledge the Traditional Custodians of the land, the Wadawurrung People of the Kulin Nation. We pay our respects to Elders past and present, and emerging leaders.



SpringDale
Messenger

Compiled & Published by the SpringDale Neighbourhood Centre Inc. A0024916V.
17-21 High Street, Drysdale Vic 3222.

COPY DEADLINE DECEMBER 2024
Bookings/copy required by 1 November.
Dist: From 25 November 2024
Circ: 15,000 copies home & shop delivered
Available online for millions to read
https://docs.springdale.org.au/Msngr_2024/3410_MsngrNov2024.pdf

Connecting Your Business with our Community

For all Advertising enquiries:
Email: office@springdale.org.au
Phone: (03) 5253 1960
Online: Book an advertisement online.
Advertisements: **Must be supplied with all text outlined.** All requirements are listed at springdale.org.au

For all Editorial enquiries:
Email: messenger@springdale.org.au
Phone: (03) 5253 1960
Online: Use the online form to lodge an article at springdale.org.au

Editorial: All contributors are asked to provide their articles as Word doc, PDF, email or online for ease of processing. Contributions are still accepted as written copy but need to be submitted in the week prior to our copy deadline.

Editing of Contributors Material: Contributors should note that the right to modify submitted articles is retained by The SpringDale Messenger Committee as per our policy. Views expressed in this newsletter are not necessarily the views of the publisher, the SpringDale Neighbourhood Centre Inc.

Images: Please supply high resolution images, minimum 300dpi at print size or larger than a 1MG attachment. Images placed in Word files will **not be accepted.**

Distribution: Distributed throughout Drysdale, Clifton Springs, Portarlington, Indented Head, St Leonards, Ocean Grove and selected businesses on the Bellarine Peninsula.

Art & Design by Jo Aspland Graphic Design 0438 055 679

The SpringDale Messenger is a locally produced publication.



This copy is one of almost 2 million community newspapers printing annually by members of Community Newspaper Association Victoria



United Nations Association of Australia Victorian Division



SpringDale Neighbourhood Centre Inc. acknowledges the support of:



Education and Training



Environment, Land, Water and Planning



Coordinator's News



Anne Brackley

Dear Friends and Friends I am yet to meet

I'm always happy when SpringDale is a buzz and that happened a number of times over the last month, especially during the days of the Care Share Repair Café and the SpringDale Art Show. The good energy was palpable. So many people, happily helping so many other happy people – I love it. I was able to darn 2 jumpers, a cardigan, a Donegal scarf and a pair of socks all reasonably invisibly. The owners were very happy, one was over the moon happy.

Everyone who participated, volunteers and community members had a great time. We shared time, skills, energy and knowledge, but most of all, the joy of helping a previously broken thing back to life was so rewarding, satisfying and incredibly practical.

Thanks to the City of Greater Geelong for supporting this initiative with a Community Grant, and thanks to all our volunteers for their time and energy. This has been the catalyst to start a Repair Café on the first Saturday of the month, starting on Sat 2 Nov 9am-12noon at SpringDale. Items smaller than a breadbox welcome. (If you have a skill to share - you are welcome too). We hope to run our Repair Café once a month on a Saturday morning maybe the 3rd Saturday in the month. Please let us know if you would like to be part of it or if you think it is a good idea.

I'm so glad to get a few SpringDale items repaired, including 2 music stands and a number of our electrical items tested and tagged. So happy.

November is the month in which we celebrate the previous year of activities, in the form of our Annual Meeting, and this year's will be held on Friday 29 November 5pm – all welcome – especially our members to celebrate all the activities of the year.

Then we will launch into Christmas Meals again. We have secured another City of Greater Geelong Christmas Grant to help us deliver Christmas meals to our community again. There will be a number of opportunities for people to help us prepare, cook and present Christmas meals for people at SpringDale, and there will be pick up and deliver options for those who cannot attend SpringDale.

As with all of our activities, we rely heavily on our volunteers to help us provide this service. Last year we created more than 1000 Christmas meals and we hope increase that figure this year. Those who have been part of one of our meals are looking forward to another one this year, but there is always room for a few more.

Many people enjoyed being able to deliver meals to neighbours/friends/family members, who weren't well or not able to come to SpringDale. If you would like to help or would like to donate to help us deliver this service, please contact SpringDale via office@springdale.org.au or ring 5253 1960 – we will appreciate your donation.

Looking forward to seeing you at SpringDale sometime soon

Anne Brackley OAM for team SpringDale



CHRISTMAS MEALS

Christmas meals are on again - looking for volunteers and people to enjoy them. Would you like to help and would you like to share a meal with new or old friends?

Please let us know.
SpringDale Office - 5253 1960

New Opportunities

SpringDale Neighbourhood Centre is closed for Melbourne Cup Day Tues 5 November (Art Classes will still go ahead)

SpringDale AGM Friday 29 November 5pm

Friday Art Workshop - Working with Reflection and Shadow

Instructor: Annette Playsted & Gillian Turner
Dates/times: Fri 8 & 15 Nov 1.30-4pm
Fee: \$60 or \$50 conc

Living and Cooking on a Budget

Instructor: Agata Commisso
Dates/times: Tues 12 & 19 Nov 6-8pm
Fee: \$50 or \$20 conc

Berry Jam Making

Instructor: Neil White
Dates/times: Thurs Nov 28 10am-1pm
Fee: \$60 or \$40 conc

Sushi and Kimbap (Korean Sushi)

Instructor: Jasmine Hong
Dates/times: Sat 16 Nov 10am-1pm
Fee: \$60 or \$30 conc

Beginners Guitar

Instructor: Steve Bayly
Dates/times: Thurs 14 Nov - 12 Dec 1.30-2.30pm
Fee: \$60 or \$50 conc

Folky Acoustic Carols with Ange KT

Sing carols together as a family or as a multiage group, in a singing circle, enjoy the Christmas Cheer early and have fun.
Instructor: Ange KT
Dates/times: Tues 26 Nov - 17 Dec 5.15-6.15pm
Fee: \$5 per family



Friendly Cuppa & Chat

Tues 12 Nov (as SpringDale is closed on Melbourne Cup day) 10-11am rsvp SpringDale 5253 1960



The SpringDale Lunch Bunch are going to Leopold Sportsmans Club, Wednesday 20 Nov 12 noon. **Bookings essential ring Margaret 0418 370 857.**



SpringDale Dining group are going to Ocean Grove Bowls Club Tuesday 12 Nov 6pm .
Bookings essential ring SpringDale 5253 1960 or email dining@springdale.org.au

QUOTE OF THE MONTH

The smallest act of kindness is worth more than the grandest intention.

Oscar Wilde

Anne Brackley - Quote curator

Be part of the upcoming edition now! Business & Services on the Bellarine 2024/25 Directory



It's all about connecting people

Business & Services On The Bellarine 2024/25 Directory is a tool that other businesses and householders are coming to rely upon for information about local services.



For information about colour display advertisement specifications and costings, please phone SpringDale Neighbourhood Centre (03) 52531960.

Support Your Local SpringDale Neighbourhood Centre - Advertise Locally

Alison Marchant Member for Bellarine



Bellarine Update

It's exciting to see so many projects underway across the Bellarine.

With funding agreements now having been signed, work is set to commence on the second stage of the North Bellarine Aquatic Centre next year. This will include an indoor eight-lane 25-metre pool, a warm water pool, gymnasium and group exercise classes and associated facilities.

In September, the Consultation Summary Report for the St Leonard's Local Port Area Plan was published, detailing the response and feedback from nearly 800 community members. This feedback from the Bellarine community is shaping the next step of the project as Parks Victoria currently conducts further investigations to refine design options for the St Leonard's Pier redevelopment. My website has further information.

Construction is nearing completion at the St Leonard's Boat Ramp. As one of the most popular fishing and boating destinations on the Bellarine, this new jetty will feature more protection for boaters and better access for everyone.

We've also had many projects reach completion including the dedicated Children's Emergency Department at Geelong Hospital, the Mental Health Hub in Moorabool St, for a single-entry point for support, and an Early Parenting Centre for bubs and families.

Upgrades at the intersection of Bay Shore Ave

and Jetty Rd in Clifton Springs were completed in September, adding a roundabout, and raised pedestrian crossing to improve the safety of our drivers, pedestrians, cyclists and boat users, who are entering the harbour, and in time for the busy summer period.

The Container Deposit Scheme, has just celebrated the one-year mark since it began on the Bellarine! What started as two deposit machines in Ocean Grove and Leopold, has since grown to 7 deposit accessible machines across the Bellarine. It has been incredible to see so many locals, community organisations and kids join in the initiative to reduce waste!

I have also been busy meeting with many local constituents and community groups regarding upcoming events, grant applications, and areas of the Bellarine they're passionate about, or State Government concerns they may have for the electorate.

In my very first contribution to The SpringDale Messenger, I stated how important it was for me to be accessible to the community. As your State Member, it is important that I hear directly from you.

This could be regarding areas including:

- Transport infrastructure, public transport, active transport and road safety
- Local healthcare services
- Applying for state government grants
- Early childhood, primary and secondary education
- Community sport
- State policy reforms
- Environmental issues

- Community safety
- Cost of living pressures

So, whether it's an email to my office, a chat at a local market or my coffee with a polliie event, you can always contact me about the issues that matter to you.

If you're looking for regular updates alongside this community column, be sure to follow my social media on Facebook and Instagram, 'Alison Marchant - Member for Bellarine', to see up to date information.

You can contact my office via email at alisonmarchantmp@parliament.vic.gov.au, phone on 03 5250 1987 or on my website at www.alisonmarchantmp.com.au/contact.

In Flanders Fields

*In Flanders fields the poppies blow
Between the crosses, row on row,
That mark our place; and in the sky
The larks, still bravely singing, fly
Scarce heard amid the guns below.*

*We are the Dead. Short days ago
We lived, felt dawn, saw sunset glow,
Loved and were loved, and now we lie
In Flanders fields.*

*Take up our quarrel with the foe: To you
from failing hands we throw*

The torch; be yours to hold it high.

*If ye break faith with us who die
We shall not sleep, though poppies grow
In Flanders fields.*

John McCrae



Alison Marchant.

Member for Bellarine

As your state member, it is important that I hear directly from you.

Contact my office for support for state matters including:

- Transport infrastructure, road safety & public transport
- Local healthcare services
- Early childhood, primary and secondary education
- Applying for state government grants
- Cost of living pressures

Scan the QR code to find out more about local Bellarine updates.



📍 Wadawurrung Country, Shop G066, Gateway Plaza, 641-659 Bellarine Highway, Leopold VIC 3224

☎ 03 5250 1987

✉ alison.marchant@parliament.vic.gov.au

🌐 www.alisonmarchantmp.com.au

We're nearing the end of 2024, but there is still so much in store at your home of the performing arts on the Bellarine.

CircArts put the wow into work life with **Off the Clock Cabaret**, 8pm Saturday 9 November. Think Office Politics meets Circus. The result? Your everyday office life gets a sultry, acrobatic twist. Get ready for high-flying antics, where corporate life is anything but business as usual.

Take a trip back in time with **All Shook Up**, joining local historian and performance dynamo Colin Mockett, for **The History of Rock n' Roll** 10:30am Tuesday 12 November Morning Showtime show.

All Shook Up will provide the soundtrack to the backstory, as narrated by Colin, of how and why rock n' roll developed, and the way this unique style of music changed the way we listen to music today.

Your musical lesson will include songs from artists such as Bill Hailey; Elvis; Jerry Lee Lewis; Buddy Holly; Johnny Cash; Carl Perkins; Chuck Berry; Ricky Nelson; Fats Domino and the influence these artists had on the world, and the next generation of musicians, culminating with the Beatles. Unlike school, you are encouraged to dance in the aisles as hits from the 50s & 60s are rolled out.

Then at 8pm Saturday 16 November, the sweet serenade sounds of **Songbirds - Gorgi Coghlan and Anna-Lee Robertson** will enchant and delight. Gorgi and Anna-Lee unite their powerful vocals to create musical alchemy. Weaving a magnificent tapestry of nostalgia and memory, wit, and wisdom through their shared realisation of well-loved songs, this joyful union showcases the consummate skill of these remarkable performers, celebrating their years of enduring friendship.

Australian entertainment stalwart Issi Dye will be joined by award-winning vocalist Glenn Douglas to celebrate two of the greats of modern popular music in **Neil Diamond and Dean Martin Tribute Show** 8pm Saturday 29 November. The music of Dean Martin defined the 50s and 60s with his wing King of Cool style vocals churning out hit after hit including Volare, Sway with Me, Everybody Loves Somebody Sometime and the smash That's Amore. Then in, the 70s, music changed, with Neil Diamond's best-selling album Hot August Night revealing a cavalcade of hits including Crunchy Granola Suite; Sweet Caroline; Holly Holy; I Am...I Said; Red Red Wine and many more. Join two of our greats as they revive the times when life was uncomplicated and carefree.

All shows are on sale via the website, potatoshed.com.au or in person at the Box Office, Monday-Friday 10am - 4pm, or call with credit card details on 5251 1998. **We look forward to seeing you.**



**WIN DOUBLE PASS to
Neil Diamond & Dean Martin
Tribute
Friday 29 November at 8pm**

To enter fill out the coupon, send or deliver to:
SpringDale Neighbourhood Centre High St Drysdale

Name: _____

Address: _____

Phone No: _____

COMPETITION CLOSSES FRIDAY 22 NOVEMBER 4PM



DCSCA is a central body to support cooperation between residents, community groups, Local, State & Federal Authorities to address issues that benefit Our Community.

DCSCA aims to harness the collective strengths and harmony by:

Fostering a strong sense of community, ensure community members are well-informed regarding local matters. DCSCA also provides a platform for the exchange of ideas and promote friendly discussion and cooperation among all members.

DCSCA supports and represents Our community in relation to significant planning development and Environmental issues by ensuring planning permits recognise the unique planning policy to guard against inappropriate development in sensitive areas. State Government introduced the DAL SPP Bellarine Peninsula in 2023, (the Distinctive area and landscape: Statement of Planning Policy.) one of four such planning policies in Victoria.

DCSCA is committed to monitoring and preserving the character and environment of significance within Our area.

So, if this sounds interesting to you, come join us. You can become a financial active or supportive member; both have voting rights. If your time is limited there is a spot for you, together we can have a strong voice for Our Community.

Pick up/Drop off for membership form:
SpringDale Neighbourhood Centre.

Jacky Noble - DCSCA President 2024
DCSCA Annual Meeting at SpringDale Tues 19 7pm

WHAT'S ON



OFF THE CLOCK CABARET



**SATURDAY 9 NOVEMBER
8PM**

Where **Office Politics Meet Circus** and your everyday work life gets a sultry, acrobatic twist.

In **After Hours Cabaret**, the ordinary is anything but. Get ready for a night where office politics are played out in high-flying acrobatics, and corporate life is anything but business as usual.

Cabaret: Adult \$42 Conc \$40
Theatre: Adult \$40 Conc \$38

HISTORY OF ROCK N' ROLL



**TUESDAY 12 NOVEMBER
10.30AM**

Join the guys from **All Shook Up** and **Colin Mockett** as they delve into the birth of Rock n' Roll!



All Tickets: \$20 Including Morning Tea

SONG BIRDS GORGI COGHAN & ANNA-LEE ROBERTSON



An unmissable performance for music lovers and cherished friends everywhere.

**SATURDAY 16 NOVEMBER
8PM**

Join us for an evening of laughter, music and friendship as two beloved **Song Birds, Gorgi Coghlan and Anna-Lee Robertson**, take to the stage together celebrating 37 years of friendship. Experience **Coghlan and Robertson** harmonize and soar through a mix of classical and contemporary favourites, that translates to a thoroughly mesmerising, musical synchronicity.

Cabaret: Adult \$42 Conc \$40
Theatre: Adult \$40 Conc \$38

NEIL DIAMOND & DEAN MARTIN TRIBUTE SHOW



Photograph: Ivan Kemp

**FRIDAY 29 NOVEMBER
8PM**

Award winning music singer **Glenn Douglas** joins original 60s star **Issi Dye** to present this unique insight into two very different song styles. The music of **Dean Martin** defined the **50s & 60s Swing King of Cool**, then in the 1970s the music changed style with the amazing song writing of **Neil Diamond**. Both presenting their renditions of memorable hits. Be entertained by these two great performers.

Cabaret: Adult \$42 Conc \$40
Theatre: Adult \$40 Conc \$38

**GEELONG'S PREMIER
ENTERTAINMENT VENUE
ON THE BELLARINE PENINSULA**

41 Peninsula Drive, Drysdale VIC 3222
www.potatoshed.com.au
f potatosheddrysdale
@ potatosheddrysdale

**BOOK ONLINE AT
WWW.POTATOSHED.COM.AU
OR WITH YOUR CREDIT CARD ON 5251 1998.**

PRESENTS
EV & E-BIKE EXPO

SUNDAY 17 NOVEMBER
1:00PM TO 4:00PM
SpringDale Neighbourhood Centre,
17-21 High St, Drysdale
 EV & Ebike displays, free test rides, expert workshops,
 learn from locals, charging info and more!
HEAR FROM EXPERTS:
 BRYCE GATON,
 THE DRIVEN
 JOHN PAUL TABERDO,
 GOOD CYCLES

 Register here or find out
 how to get involved

Bokashi
Compost Bin
 On Sale at SpringDale

Re-imagining Housing for Seniors

I'm really encouraged by a number of conversations that we've had over this past month. People are starting to think creatively about how we could be living in the future, and it so often includes ideas around community, sustainability and affordability.

We've had couples thinking about how they can develop their own land in a way that will create a place for living, socialising and belonging. This isn't the usual idea of selling land off to a developer to divide into small blocks and build 3 or 4 bedroom houses with all the mod-cons. This is thoughtful planning about homes that appeal to people who want to perhaps downsize and retire into a little community.

We've had conversations with community housing organisations to see how we all could partner together to create more affordable and appropriate housing for seniors on The Bellarine.

We've also made connections with people who are concerned about the lack of affordable housing for older single people and this has resulted in two senior people each finding a place they can make their home; somewhere that's safe, affordable and desirable to live in.

Instead of slowing down for the end of the year, I feel like we're really picking up the pace and as a group we are really appreciating all those people who are sharing their ideas, sending articles and information, and offering to help in any way they can.

If you have something you'd like to share - whether it is an idea, or a house, please reach out. You never know what the outcome might be. **Dianne Bennett** (diannebennett4@hotmail.com)

Humans in St Leonards
Exhibition
 Saturday Nov 2 & Sunday Nov 3 2024
 10AM till 2PM
 Community Space, Blanche St.
 An exhibition sharing the photos and stories of the people who live, work and play in St Leonards.
 Please pay us a visit, we'd love to see you there!

Advertisement

I am here to help.



My Office can assist you with information about Federal Government services, including:

- Centrelink
- National Disability Insurance Scheme (NDIS)
- Medicare
- Australian Taxation Office (ATO)
- Immigration, citizenship and customs
- Passports
- Pensions, and My Aged Care
- Child support
- Veterans' Affairs

SCAN THE QR CODE TO READ MY BUDGET NEWSLETTER

LIBBY COKER
FEDERAL MP FOR CORANGAMITE

Email Libby.Coker.MP@aph.gov.au
 Phone 03 5261 7683
 Web libbycoker.com.au @LibbyCokerMP

Authorised by Libby Coker, Australian Labor Party, 26/500-540 Torquay Road, Armstrong Creek VIC 3217



Remembrance Day at Drysdale Cenotaph

The Drysdale RSL club will hold a small ceremony on Remembrance Day at the memorial outside our clubrooms at 13 Princess Street, Drysdale. The event this year falls on Monday 11 November.

Members of the public who want to attend should gather at the clubrooms at 10:45. We expect to have a welcome speech and some participation from local primary schools. The flag will be lowered and there will be one minute's silence at 11am followed by the Rouse and the raising of the flag. A number of deaths will be laid.

From the Australian Army website:

"11 November is universally associated with the remembrance of those who had died in the First World War. This conflict had mobilised over 70 million people and left between nine and 13 million dead and as many as one third of these with no grave. The allied nations chose this day and time for the commemoration of their war dead.

"At 11 am on 11 November 1918, the guns on the Western Front fell silent after more than four years of continuous warfare. The allied armies had driven the invaders back, having inflicted heavy defeats upon them over the preceding four months.

"In November, the Germans called for an armistice (suspension of fighting) in order to secure a peace settlement. They accepted the allied terms of unconditional surrender. The 11th hour of the 11th day of the 11th month attained a special significance in the post-war years and became universally associated with the remembrance of those who had died in the war."

Since 1918 Australians have participated in wars and peace-keeping missions world-wide, from Europe to Korea to Malaysia to Iraq to Afghanistan and continuing today in the Middle East. We are continuing to supply defence materials to Ukraine, and we have invested heavily in future submarines and fighter aircraft. Apart from equipment, we have to respect those soldiers, sailors and airmen and women who have volunteered to support our national interests. On Remembrance Day we will remember the sacrifices they have made to protect our futures.

Poppy Appeal. The annual Poppy Appeal raises funds for veterans and their families. During the week leading up to Remembrance Day, the Drysdale RSL will accept donations from the public at locations around Drysdale and Curlewis. The money raised goes towards



the welfare of our local veterans.

Golf Day. As advised in the last edition of the SpringDale Messenger, our annual golf day is back on, at CliftonSprings Golf Club, on Monday 18 November. Please contact the Golf Club Pro Shop directly or Geoff Fifer on 0428 222 984 for more information.

Harry Paterson - Secretary
Drysdale RSL Sub-branch





Bringing the light, love & hope of Jesus to our local & greater community.

45 Central Rd, Clifton Springs
office@central-baptist.com.au
centralbaptist.com.au
(03) 5253 1833 / 0478616719

You are welcome to join us -

- Sunday Family Service **10am**
- Children's Ministry
- Play Group
- Youth Group
- Home Groups

Extraordinary people.
Extraordinary care.

Are you in need of support at home?
At Prestige Inhome Care, we're committed to helping people stay in the comfort of their own home. Whether you need some help with arranging appointments or household tasks, or full-time nursing care, we can tailor a range of services to meet your needs.

Personal care, dementia care, palliative care, 24-hour and disability support services available across the Bellarine Peninsula and Surf Coast.

Contact:
Alex Birrell - Relationship Manager/Nurse
alex@prestigeinhomecare.com.au
1300 10 30 10



Heritage Cameo Conveyancing

'Your Local Conveyancer'



Services Include

- Free Pre-Purchase Advice
- Subdivisions
- Property Transfers
- Purchase Contracts
- Sale contracts – Section 32 preparation

Shannon Calder
Manager – Bellarine Office



Heritage Cameo Conveyancing
'Professional and Personal Service Guaranteed'

Bellarine Office:
8 Murradoc Road, Drysdale, Vic 3222
E: shannon@heritagecameo.com.au
T: 03 5251 3950

Contact your local friendly conveyancer Shannon for all your conveyancing needs and questions.



HUNTERS REAL ESTATE

- Property Sales
- Property Management
- Holiday Rentals

2 LOCATIONS ON THE BELLARINE

4B Brown St Portarlington 5259 1103	1389 Murradoc Rd St Leonards 5215 9327
--	---

huntersrealestate.com.au



lee martin.
Director.
0400 957 839

andrew kibbis.
Director.
0411 424 412

**now open in drysdale @ shop 5/8 high street.
P: 03 5297 3888**



PETROL STATION & CONVENIENCE STORE

Petrol, Autogas, Bait & Fishing Supplies
Open 7 Days 6am - 10pm



97 High Street Drysdale 3222
Phone (03) 5251 2603

CARPENTER

Servicing Geelong and the Bellarine Peninsula

- Renovations and Restorations
- Weatherboards and Fascias
- Door and Window repairs
- Decks and Pergolas
- Interior repair and upgrades

25 years Trade experience

0409 411 576

Rotary International: Empowering Education

Did you know that 17% of adults worldwide can't read? We often take reading for granted since it's such a big part of our daily lives. Whether it's understanding signs, labels, and instructions, messaging loved ones, accessing information, or just reading for fun, reading is essential. But for those who can't read, it's tough or even impossible to get important information about jobs, housing, or healthcare. This keeps them stuck in poverty, and makes them more vulnerable to exploitation and abuse.

In Australia, literacy levels among kids have been dropping in recent years. But our dedicated Bellarine North Rotarians are helping to turn things around. Since early 2023, they've sorted through 724 boxes of books donated by the 123read2me charity. These books are distributed to schools, kindergartens, and day-care centres to help disadvantaged children in our area. Plus, books donated by our club recently helped the Salvation Army open a mini library in Drysdale. We're also proud to support literacy abroad by funding the refurbishment of a building at a primary school in Siem Reap, Cambodia, which is being transformed into a library and information centre for students from nearby villages.

By empowering educators and providing resources, Rotary is making sure that learning is accessible to everyone, no matter their age or background.

Interested in having fun, making friends, and helping others?
To learn more about Rotary International or join our club, please contact our Membership Officer, **Caroline Rickard**, at 0408 989 221.



GEELONG POOL CO.
'Built on the Bellarine'
0415 854 727



DRYSDALE COMMUNITY CHURCH

Find us on 

Sundays at 10am
We invite you to join us for contemporary worship & relevant teaching. Children's program runs throughout school terms.
276-290 Jetty Road, Curlewis
ph: 5253 2241 e: office@dcchurch.org.au
w: dcchurch.org.au

Second Chance Shop
Quality second-hand goods at great prices!
40 Geelong Road, Portarlington
ph: 0423 033 977

NEVILLE RICHARDS

*A community focused Real Estate Agency
achieving outstanding results on the Bellarine*

5251 3857

NEVILLERICHARDS.COM.AU

Property Management • Sales • Appraisals

Choose your Words Carefully

The words you choose when talking to yourself can significantly impact your mindset, emotions, and well-being. Positive self-talk helps to build self-esteem, reduce stress, improve your immune system and encourage resilience (feeling “ok”). It’s not just about being positive though—there are powerful nuances to the language you use that can really cultivate a healthier mental landscape.

The Shift from “I Can’t” to “I Choose Not To”

Self-talk often includes words that feel controlling and limiting, such as “I can’t” or “I have to.” These phrases instil powerlessness, and suggest you have no control over your decisions. Using “I choose not to” or “I prefer not to,” will reclaim your autonomy and power. For instance, saying “I choose not to eat junk food today” feels more intentional than “I can’t eat junk food.”

The Impact of “Yet”

Another powerful addition to your self-talk is the word “yet.” Saying “I can’t do this,” implies a permanent limitation. Adding “yet” turns a fixed mindset into a growth mindset. “I can’t do this yet,” encourages the belief that you can improve with effort and time.

Avoiding Absolutes

Using “always” and “never” in your self-talk exaggerates negativity. For example, “I always get it wrong” or “I never succeed” magnifies failure and detracts from your accomplishments. Instead, soften your language with “sometimes” or “this time.” Rephrasing it to “I sometimes make mistakes, but I learn from them” will create a more constructive mind message.

Choosing Kindness Over Criticism

Many of us engage in harsh self-criticism, calling ourselves names or focusing on our flaws. Shifting from critical language (“I’m so stupid”) to kind language (“I made a mistake, and I can learn from this”) will make an incredible difference. Treat yourself with the same kindness and patience that you would offer to a friend in a similar situation.

Framing Challenges as Opportunities

Consider the way you describe obstacles in your self-talk. Instead of saying “This is too hard,” try, “This is challenging, but I can figure it out.” By framing difficult tasks as opportunities to grow, you will influence the way you approach and overcome challenges.

The Power of Gratitude

Gratitude can also be used in your self-talk. Shifting from “I have so much to do” to “I’m grateful for the opportunities I have today”

rewires your brain to focus on abundance rather than overwhelm. Gratitude cultivates a more optimistic outlook, which can improve both your mental and emotional health.

Remember

Positive self-talk is not just about turning every negative thought into a positive one. It’s about choosing language that promotes growth, empowerment, and kindness. By making small changes to the way you speak to



yourself—embracing possibility, compassion, and choice—you can enjoy the benefits of an optimistic mindset.

Kim High - Clinical Hypnotherapist
BSc DipEd MEnv DipClinHyp
Family Hypnotherapy

BELLARINE WHOLEFOODS

Tick off your Christmas gifting early this year!

Just choose your budget and we'll do the rest.

Our customisable food and gift boxes have something for everyone.

PRE-ORDER NOW



OPEN 7 DAYS A WEEK
Monday-Friday 9:30-5pm
Saturday 9:30-3pm
Sunday 10-2pm

80 Murradoc Rd,
Drysdale VIC 3222
T: 0421 640 640
info@bellarinewholefoods.com.au
www.bellarinewholefoods.com.au

PARKING LOCATED AT THE REAR OF BUILDING OFF TORNO COURT



14 Knowles Grove
Point Lonsdale

Face-to-face &
Online sessions
available
Monday-Friday

Kim High - Clinical Hypnotherapist

- Reach your goals
- Strengthen your self-confidence
- End unhealthy habits and behaviours
- Overcome your limiting beliefs

0439 330 919
www.familyhypnotherapy.com.au

Rebates available through some private health providers



William Sheahan

Funerals

Phone: 5251 3477
Available for 24 hr assistance

Caring and experienced staff to meet individual funeral service needs

- ❖ Locally owned and operated family business
- ❖ Pre-paid and Pre-arranged funerals
- ❖ Chapel seating 150 plus
- ❖ Live-streaming service

www.sheahanfunerals.com.au
enquiries@sheahanfunerals.com.au
2-4 Murradoc Road, Drysdale Vic, 3222

**Best Start
Best Life**

Financial incentives for kindergarten teachers and educators.

Giving Victorian children the best start means more qualified teachers and educators are needed across the state.

Get up to \$50,000* on top of your salary for positions at a priority service.

Relocation support is also available.

Search for a position with a financial incentive through the Early Childhood Jobs website at vic.gov.au/kinder



*Terms and conditions apply, visit vic.gov.au/kinder



Memories of Yesteryear

THE FAMILY HISTORY QUEST 07 MARRIAGE CERTIFICATES

This month, my wife and I celebrate 45 years of marriage. If you look at our registered marriage certificate it says we were married in the Drysdale Anglican Church in November 1979 and gives our address at the time and occupation. The certificate also gives our age at the time, birth dates and town of birth as well as the names of parents. All this information is important to the family historian and can be another source to confirm birth dates and establish relationships between family members.

All weddings are registered with Birth Death and Marriages in their state. Birth, Death and Marriages Victoria has a free index of marriages from 1853 up to 60 years before today's date. Marriage indexes can be viewed at <https://www.bdm.vic.gov.au/research-and-family-history/search-your-family-history> and certificates can be bought.

Ancestry.com has Australian Marriage Index from 1788-1950 although Victorian records are from 1853 to 1950. To access Ancestry.com you need to pay a subscription, or many libraries have free access to the indexes. While these Marriage indexes make up some of the most important indexes of early Australian marriage records, they are not necessarily 100 percent complete as compliance to registration laws, of course, varied, and Australia's vast distances complicated most any record-keeping effort.

Newspaper announcements of weddings and marriages can supplement your information and confirm information you already have. Country newspapers often had an article on the wedding which give more information on the person. Trove website (<https://trove.nla.gov.au>) is a free and great site to access newspaper reports or you can check out your local library for newspapers.

If you know the church a person was married in, often the churches have marriage registers in their archives and a visit could be worthwhile.



Divorce was possible in Victoria in the second half of the 19th century when the Divorce and Matrimonial Causes Act came into effect in 1861. Prior to this very few Victorian residents obtained divorces under English ecclesiastical law. The Public Record Office Victoria (PROV) holds Divorce files created between 1861 and 1944 and can be accessed at <https://prov.vic.gov.au>. Ancestry.com also has many divorce records.

Brushscapes EXHIBITION

7th NOV -
2nd DEC



Anne Arrowsmith,
Renaë Chapman &
George-Ann Gunn

from the SpringDale Artists
will exhibit a selection of watercolour, acrylic
& oil paintings at Artisans of Australia Gallery,
1475 Portarlington Rd. Culewis.



The Queenscliff Branch of COTTAGE BY THE SEA invites you to attend a FUNDRAISING EVENT:

A CHRISTMAS CRAFT MORNING
Christmas gifts, cards, decorations

• Use your hands & minds creatively
in a small group



WHEN: Monday 25 Nov 2024 9am-12noon

VENUE: Art Room at Cottage by the Sea,
29 Flinders Street, Queenscliff

COST: \$50 - includes all materials and a
delicious morning tea

BOOK: Ring Cynthia 0405 644 166 /
Claire 0417 967 072

Confirm your place using Direct Bank Deposit by 18 Nov:
Cottage by the Sea Queenscliff Branch BSB: 633000
Account: 143034171 Indicate name please.



MEETING MONTHLY



Business on the Bellarine

NEW MEMBERS & VISITORS WELCOMED

BOB's monthly networking events offer business professionals valuable opportunities to foster connections, mutually support one another, and contribute to the growth of both the local economy and community.

We meet on the 2nd Tuesday each month @ 7.45am. Contact Jo Aspland on 0438 055 679 for more details.

Follow us on @BusinessOnBellarine

www.business.onthebellarine.com.au

Connecting Business & Community

10 / 66-68 Murradoc Rd

MECHANICS ON MURRADOC

CAR SERVICE BOOK NOW

From \$189

(03) 52-940-930

Our competition was Macro-Close Up. This was a set subject judged by Gerry Van Der Meer who specialises in macro photography.

Congratulations to members who were awarded the following places:

Prints - A Grade

- 1st: 3 drops 1 Flash Chaos by Rob Peck
- 2nd: Bella 1 by Stan Coath
- 3rd: The All-Seeing Eye by Ray Farrugia
- Merit: Urchin by Robyn Curtis

B Grade

- 1st: Agapanthus by Lynn Cornell

Electronic Digital Images - A Grade

- 1st: Sugar Ants Storing Food by Jim Den Ouden
- 2nd: Daisy with Dead Earwig by Jon Furey
- 3rd: Hanging on the Edge by Jim Den Ouden

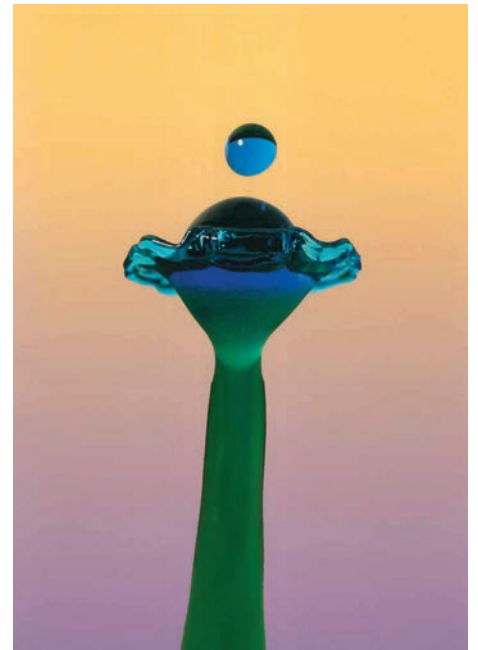
B Grade

- 1st and Image of the Competition: The Final Frontier by Geoff Gaskill
- 2nd: Water Music by Geoff Gaskill
- 3rd: Thirsty Pair by Geoff Evans
- Merit: Just Hanging Around by Geoff Evans

Bellarine Camera Club meets at SpringDale Neighbourhood Centre at 7.30pm on the 1st and 3rd Monday of each month. For further details see www.bellarinecameraclub.org.au

New members and visitors are welcome.

Contact President Debbie Hallows phone 0400 562 571



 THE
WISH GROUP

Paying **TOO** much for your home care package fees?

Do you get to **CHOOSE** who comes to your home?

Do you have a team that **LISTENS** & is available longer hours?

The Wish Group is a boutique company providing care coordination, we make sure that your wishes are heard. We work with you to get the services you choose at the **BEST** price.

FEES & SERVICES

If you are paying more than 25% for fund management and a dedicated care co-ordinator, then give us a call.

CARE COORDINATION

Our care coordinators are there for your questions anytime you need them. We offer you a dedicated experienced coordinator who is backed up by excellent fund managers. We promise to keep in touch on a regular basis, to always be your advocate and help you navigate your aged care journey with dignity & respect.

So, if you are tired of ever-changing care coordinators, high fees & lack of choice then call us for a **FREE** no obligation call or visit to discuss how we can help you take control of your life.

WISHED.COM.AU YOUR CARE, YOUR CHOICE.  **1300 765 336**

**Best Start
Best Life**

Become a kinder teacher or educator.

Financial support of up to \$34,000 available.

The Victorian Government is delivering Free Kinder. And that means thousands of new jobs across the state. Financial support to help you study and Free TAFE courses are available.

Learn more at vic.gov.au/kinder



SpringDale Trivia
by Drysdale Girl Guides

1. In what year did the moon landing take place?
2. What was the name of Maggie Smith's character in the Downton Abbey TV series?
3. How many elements are in the periodic table?
4. Mount Kilimanjaro is in which country?
5. Which Renaissance artist painted the ceiling of the Sistine Chapel?
6. Which country has won the most women's Soccer World Cups?
7. What is the Pythagorean Theorem?
8. 2025 will be the year of which Chinese zodiac animal?
9. What position on the AFL ladder did the Adelaide Crows come at the end of the 2024 AFL season?
10. How many eyes do Bees have?

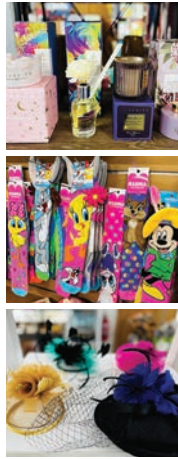
Turn to page 21 to find the answers.



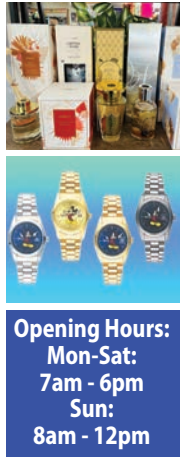
Drysdale Guides Meet on Thursdays during the school term from 7pm to 8:30pm. If you are interested or have any questions, please contact Anne Brackley on 0407 529 205 or go to <https://www.guidesvic.org.au/find-us/> to make an enquiry.

Get Ready for the season at
Drysdale Newsagency & Tatts Lotto

Whether you are prepping for the Geelong Cup or getting a head start on Christmas shopping. We've got you covered.



- **Christmas Gifts Galore** - Skip the holiday rush! We have an amazing range of gifts for all ages to help you check off your list early. Whether it's for family, friends, or colleagues, you're sure to find something special.
- **NEW DISNEY Collection Pre-order** - Be the first to get your hands on Magical Disney gifts, perfect for every fan! Pre-order now in store.
- **Stationary Essentials** - From sleek pens to diaries, we've got all your stationery needs covered.
- **We're a Division one Winning Store for TattsLotto & a Top Prize Winning Ticket for Scratchie!** Grab your ticket today and try your luck - you could be our next winner!



Opening Hours:
Mon-Sat:
7am - 6pm
Sun:
8am - 12pm

Visit us today and get ahead of the season at Drysdale Newsagency & Tatts Lotto.

12 - 14 High Street Drysdale P: 03 5251 2776 E: drynews@bigpond.com



**IF YOU'RE READY
TO SWITCH TO ELECTRIC**



WE CAN HELP

The SEC is back.
We're supporting Victorian homes to go electric and save on energy bills. Find out how you can make the switch.

secvictoria.com.au



Authorised by the Victorian Government, 1 Treasury Place, Melbourne



Science fiction trailblazing...

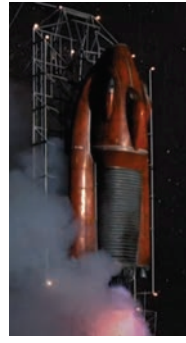
Just received a fascinating video clip from my ubiquitous American friend Jim. It would seem that the Space X people have mastered the concept of backing down a rocket to a gantry. I have in the past, seen footage of their attempts to land rockets on their tails in true comic book style. They have had a lot of failures, and I did feel a certain scepticism as to whether we are at this point yet. But, if this clip is to be believed, they can now land to a gantry in the same way as Gerry Andersons' modules did at Moonbase in his 1970 series "U.F.O."

In this story, a permanent manned base has been established on the moon. Single seater "fighter" spacecraft, and their crews are stationed there to attack invading alien saucers, before they can reach earth. Supplies and crew changes are shuttled to and from earth in modules, that vaguely resemble very simplified versions of the original N.A.S.A. space shuttle, which, at that time, existed only on the drawing board.

The "U.F.O." shuttles were released into the air from the top of conventional aircraft in flight. This was how N.A.S.A. first tested the flying capabilities of the real space shuttle. They then continued their journey into space, and on to the moon where they tilted upwards and landed backwards, down against a vertical

gantry situated on top of the "Moonbase" installation.

Now if you type in Gerry Andersons "U.F.O." on You-tube, and bring up the episode "Computer Affair" (my favourite), in the very opening sequence, you can see this process take place. It certainly made for exciting television for us country kids, but I didn't think it could happen for real in my lifetime.



But hey, watch the episode and check the link! Wow! John.

https://youtube.com/shorts/IYpwN_I1Rok0?si=f1PwLsZA793WUt1x

CREATORS & CRAFT MARKET
BANNOCKBURN

Sunday 24th Nov, 2024
 From: 10.00am - 2.00pm

New Venue - Lions Club Parkland
 Geelong/Shelford Rd, Bannockburn

Stall holder enquiries
 contact Noeline on:

0427 923 934 or [f](https://www.facebook.com/ccmbanno) or ccmbanno@gmail.com

HENDREY
CONSULTING

INDEPENDENT
PROPERTY VALUERS

MELBOURNE
GEELONG
BELLARINE PENINSULA
SURF COAST

We provide comprehensive valuation advice and reports for all purposes including:

- Capital Gains Tax
- Superannuation
- Family Law
- Internal Accounting and Transfer
- Estate and Probate
- Mortgage Valuations

0418 314 760

valuations@hendrey.com.au

hendrey.com.au

RT Edgar

BELLARINE

RT Edgar have been delivering outstanding results to the Bellarine community for over 30 years.

If you are thinking of buying or selling, or would just like to know where your property sits in the current market, get in touch with me today to book a 15 minute, no-obligation appraisal.



Aaron Jones
Director | Licensed Estate Agent
0403 664 428
aaron@rtedgarbellarine.com.au



SALES | RENTALS | PROJECTS | COMMERCIAL

Recently I have been enjoying the warmth of northern Australia. I booked a tour that started in Darwin, journeyed down through Katherine then across to Kununurra in the north east corner of Western Australia. Though I thought that I had seen most birds that call Australia home, I was pleasantly surprised at the variety and number of species that were sighted.

Kununurra was established to service the Ord River scheme and is situated amongst the ranges northeast of the Kimberley Hills, on the banks of a large mainly man-made lake, Lake Argyle. Due to the abundance of fresh water, bird life congregates along the banks and on tiny islands, as they have travelled from the dry inland to drink, and enjoy a cooler water environment. Leaving our motel at 4.00am was a shock to the system, however once our group settled comfortably on our catamaran, which slowly moved out onto the smooth expansive water, we relaxed and began to enjoy the special events of the day. Our eyes gradually adjusted to the shadows of the night and then as the gentle morning light grew brighter we were able to see the outstanding coloured rock formations, the glowing colours of our surroundings and then the movements of wildlife as they awoke to a new day. Not only birds were visible, but animals, reptiles and amphibians. The boat pulled into an area and anchored and we spent hours gazing at the shoreline and the sky, watching life as it awoke for the day.

One of the birds that entertained me was a Jacana. Part of the family Jaconidae. The Jacana is a wader who delights in living amongst vegetation on the shore line, or rather in the water near the shore. It is not known for its swimming prowess even though a water bird, but Jacanas are known throughout Asia, and have many common or nick names such as 'Lily Trotter' or even the 'Jesus bird'. The bird to the observer seems to walk upon water, just as Jesus is said to have done. The ability to 'walk upon water' comes from the bird's ability to walk over lily pads and water vegetation. Its extremely long legs, thin long toes and long claws, distributes the weight of the birds allowing them to stand upon and walk over the vegetative surface.

All day I kept wishing, hoping and desiring to see a father jacana caring for his family, by carrying the young. In this species, the gender roles are reversed, with males performing most of the breeding duties. Dad makes the nest, incubates the eggs and cares for the young.

Also, this marvellous dad gathers his family together at the very first sign of danger, allowing them to crawl up under his wings and safely hide. The only sign of the youngsters are many dangling, gangly legs, seen extended from under the fathers' wings. Many wonderful images of males carrying chicks to safety have been photographed and published, but alas, not by me. Despite watching and hoping I didn't get an opportunity to see this



This safety measure occurs as death rates to the youngsters are high, with 80% of the nests being lost to predation. A photo of a protective dad with wings full, is still on my ambition list so maybe I need another trip back to our far north.

Carole O'Neill

CHESS CLUB

Do you play Chess and would you like to play in Drysdale? We are creating another Chess Club at SpringDale. A very experienced Chess Player, Rod Hessing is offering this opportunity to our community. If you would like to play or learn to play - this could be the opportunity for you. We are proposing Wednesday afternoon 3-5pm. This time slot might allow interested younger players to attend as well. If you are interested in this time slot or want to suggest another - please contact SpringDale Office office@springdale.org.au or ring 5253 1960.

| Aged Care

Homestead Estate

Live your best life with us.

Located in Wallington, Homestead Estate is set in an idyllic rural location with views of the surrounding countryside.

The design and decor of Homestead Estate reflects the beauty of its natural environment. This welcoming atmosphere promotes a sense of style and sophistication in a rural setting and features a stunning new botanical garden.

Call our Resident Liaison, Susan, on 0498 018 632 to book a personalised tour.

The unique range of services and facilities available at TLC Homestead Estate include:

- On-site medical centre
- Spacious private rooms with ensuites
- Dementia support environment
- Registered nurses on-duty 24-hours a day
- State-of-the-art gymnasium
- Sports & piano bar
- Outdoor entertaining areas
- Hydrotherapy pool
- Fully-equipped café
- Virtual reality cinema
- Beauty salon



You don't need all the safety gear,



until you do.

You might think putting on the safety gear will take longer than doing the job.

It could be that you've done it a thousand times before. But that doesn't reduce the risk. You may not come back in one piece.

Check you've got the right safety gear for the job, visit worksafe.vic.gov.au/safety-gear-farm

It's never you, until it is.



Scan for farm safety support.



Reducing workplace harm.



Making my Home more Sustainable - Part 17

Tim Forcey's presentation on *My Efficient Electric Home Handbook* went very well with over 50 people in attendance including an MP. Tim, an ex-Oil Industry Chemical Engineer, explained the steps he took upgrading his 1903 built weatherboard house and made it All Electric and then net carbon zero, and is saving over \$3,000/year in energy costs. He is also a Home Comfort Advisor / Assessor and has helped people in over 2,000 homes and learnt a lot along the way.

The first strategy is generally to reduce usage, which involves improving the home envelope - that is sealing around doors, windows etc and then insulating as much as possible. The next step is to review all gas appliances and understand what would be the logical electric replacement. One may wait for units to become unreliable or be part of a related project, eg a kitchen renovation to include induction cooking or go ahead asap. However, one should do some research so one knows what to go for if the gas unit fails one cold day. Further steps are in the book.

The book is available at the Library after a long wait or can be bought from the Ocean Grove Bookgrove Store.

Soon we may be trying to keep the heat out of the home, eg by stopping the sun going directly onto the windows (external blinds,

eaves, pergolas, trees or less effective but still useful, closing off the internal blinds, closing the curtains with tight fittings on the edges, installing renshade (Aluminum foil with lots of pinholes which one can see through but reflects much of the heat), double glazing, and of course taking advantage of evening / night cross ventilation.

For those who still have the original (Howard) 60c/kWh feed-in tariff, then alas they cease on Nov 1st. However it will give you the opportunity to upgrade to a much larger system at a cost much lower than your original investment though with a very much lower feed-in tariff. I noticed that for much of the time between 10.00am and 2.30pm (last week of September) residential solar in SA was supplying 80% of all South Australia's power requirements at minimal cost.

The skill is now to transfer as much of your load as possible to the middle of the day and this could include an Electric Vehicle, as it can make car transport a tiny fraction of the current running costs (Discussed last month) or replace a second car with an EBike.

On this topic the EV and EBike EXPO at SpringDale on Sunday Nov 17th is coming together with 14 cars to inspect and talk to their owners plus a range of bikes to check out and to ride plus some top experts (Bryce



Gaton of The Driven and John Paul Taberdo of Good Cycles) presenting on EVs - what to buy and why, what's coming and solving the charging mysteries, plus explaining the range and also the variety of bike types.

As the last coal fired power station closes in England it reminds me of my childhood in a Mining Area - the closely knit and supportive communities, the powerful men but often with coughs and enjoying a lot of beers, the occasional disasters and the women waiting at the pit head, the shaking of the ground and sometimes the acid fogs but mostly the generous community spirits. Now out at sea, one can sometimes glimpse the massive wind turbines quietly whirling away.

Rob Gardner



NO JOB TOO SMALL

Carpentry Repairs • Bathroom Alterations
Window & Door Repairs & Replacement
Decks & Pergola's

Call Bill Higgins 0418 378 094

Bellarine PC Repairs

Martin

Mobile: 0411 472 360
Workshop: 5251 5405

10am to 4pm • Monday - Friday
\$80 hour plus \$40 call out charge for on site work
21 Eastwood Crescent Drysdale
By appointment.
Please call or text first.
- not Apple sorry

25 years Gardening Experience
Horticulture qualified.

Gardening Services

Struggling to keep up with garden maintenance?

- Garden clean ups and rejuvenation
- Reduce maintenance required in the long term.
- 100% guarantee of the weight lifting from your shoulders...

GARDENS ABOVE & BEYOND

Landscape Gardening & Design


Call Briony on 0447 936 148

PPG Pavilion Property Group

3222

Connect with your local property expert.

Jack Cassin
0493 112 074



3B/15 Hancock Street, Drysdale
pavilionppg.com.au

Repsco AUTHORIZED SERVICE

DRYSDALE MOTORS

All Mechanical Repairs including
New Vehicle Log Book Servicing

Specialising in European Vehicles:
Audi, Mercedes, Peugeot, VW and more

Nationwide Warranty
why travel when the best is right here in Drysdale

5253 1033

44 Murradoc Road, Drysdale
info@drysdalemotors.com.au

autopro

Drysdale

Open 7 Days

For whatever you need for automotive repair, maintenance & general care.

- Spare Parts • Electrical • Car Care
- Touring & Vehicle Accessories • Oils
- Tools • Paints • Workshop Accessories & so much more...

2/31 Murradoc Road, Drysdale
Phone: 5253 2811

BELLARINE BGS

GLASS & SCREENS

- Security Doors • Shower Screens
- Wardrobe Doors • Mirrors • Flyscreens
- Glass Repairs • Balustrading

7 Days A Week

Fast Glass Repairs ✓
Same Day Service ✓

Ph: (03) 5253 2301

38 Murradoc Road Drysdale 3222
D Ward Facsimile 03 5251 3905



Bellarine Support Group for Kinship Carers

This year 2024, Bellarine Kinship Carers will be celebrating our 9-year anniversary.

In 2015, I walked into SpringDale and spoke to Anne Brackley, about starting a kinship support group, for all the kinship carers in our region.



Lime Healthcare

Equipment Sales, Hire & Service

- Walking Aids
- Wheelchairs & Scooters
- Daily Living Aids
- Bathroom & Toilet Products
- Seating & Pressure Care
- Lift Chairs & Beds
- Lifters & Slings
- Ramps & Handrails

Maintain your zest for life

1/93 Murradoc Rd, Drysdale VIC 3222
Ph: (03) 4252 8199

Anne at first had no idea what I was talking about, but to her credit she asked lots and lots of questions. So, my dream of helping and supporting local kinship carers was starting to flourish. Anne believed in my dream, and as they say, the rest is history.

Our group started in 2015 with just two families - my granddaughter and I were one family - the other family were close friends, who were just starting their kinship journey.

But today, our numbers stand at a staggering 87 families in our local region, all travelling the kinship journey. Every single family in our group has a different story to tell, but we all have one thing in common, we love and support the children in our care.

On that note, I would like to start our 'Adopt a Kinship Family' drive, for this festive season.

All our families are numbered 1 to 87, with no identify information, but a brief description of each family.

FOR EXAMPLE

Grandparents aged over 70 years of age, with granddaughter aged 6, and grandson 10 in their care to protect their privacy.

If anyone, social group or service group would like to consider 'Adopting a Kinship Family' at Christmas, please make contact on the number listed below.

We can then have a discussion about which family would be suitable for you to adopt.

To avoid the Christmas rush, I am requesting that all 'Adopt a Kinship Family' parcels be

ready for pick up, or delivery by the end of the first week of December, or at a time that is convenient. Then, I can contact the Kinship Family concerned to pick up their parcels, well before Christmas.

I would like to take this opportunity to thank the following -

Anne Brackley from SpringDale; you Anne, believed in my dream and for that I thank you.

To all the lovely community groups, service clubs and you the local community, a HUGE thank you for supporting Bellarine Kinship Carers. The smiles on the children's faces at Christmas time is heartbreaking, I so wish I could take photos of the children, but due to court orders, that is not permitted. To the awesome person who left new winter pyjamas and new winter clothing at SpringDale for the children - THANK YOU SO MUCH (you included receipts).

To all the generous people who have donated lovely hand knitted jumpers, cardigans and beanies - Again, a huge - THANK YOU.

Again, THANK YOU everyone for supporting Bellarine Kinship Carers.

If you are a kinship carer, sitting at home thinking that you are all alone, come join our group. Bellarine Kinship Carers meet on the first Monday of each month (not during school holidays), at SpringDale Neighbourhood Centre in Drysdale 10am to 12noon. Hope you can join us.

Stay safe everyone and again a huge THANK YOU to you the community.

Jeanette Hanley-Heath - 0414 308 257

YOU CAN'T CONTROL FIRE, BUT YOU CAN PREPARE FOR IT.

The best way to keep you and your loved ones safe this fire season, is to make sure you have a fire plan.



Go to fireplanner.vic.gov.au to create your personalised fire plan now.

HOW WELL DO YOU KNOW FIRE?

Authorised by the Victorian Government, 1 Treasury Place, Melbourne





Clifton Springs Garden Club

Although I touched on our outing to the Bellarine Landcare Nursery last month, I thought it worthy of mentioning again and sharing some photographs. Sixteen members braved a terrible day weather wise, but were all rewarded with a wonderful tour of the Nursery with Fiona.

We are so lucky in this area to have such wonderful community groups like this. Did you know that over the 21 years of their existence, they have returned over 1 million plants back into the local landscape, most of which have been grown by seeds collected locally (with permits), and grown by volunteers. What would we do without volunteers in our society. The nursery also sells plants to the public at a very low cost, I managed to find a few I liked, and squeezed them into my garden.

November is a busy month for the Club with Janet Allen being our last speaker for the year. She is giving us a presentation on fuchsias. I am really looking forward to this meeting. Fuchsias are one of my favourite plants and

they grow very well down here as we don't have extreme weather.

We have an outing to the Great Ocean Road Nursery, followed by lunch at Common Ground Project coming up and Creswick has their annual open gardens in November so some members will spend the day in Creswick doing what gardeners love doing, looking at other peoples gardens.

Our year will finish with our annual Christmas lunch, then the Club goes into recess until February 2025. This gives the Committee time to rest, relax and regroup, ready for another Garden Club year. It also gives us time to find interesting speakers and more great places to visit.

If you would like to keep up to date with what the Garden Club is doing, contact our Secretary Helen, on telephone 5257 2220 or email hma3152@gmail.com or keep reading the SpringDale Messenger for details.

Visit to Bellarine Landcare Nursery



Trivia Answers

- | | |
|---|---------------------------------|
| 1. 1969 | 6. The United States of America |
| 2. Violet Crawley, the Dowager Countess of Grantham | 7. $A^2 + B^2 = C^2$ |
| 3. 118 | 8. Snake |
| 4. Tanzania | 9. 15th |
| 5. Michelangelo | 10. 5 |

Treasure the Moment

A Celebrant for all occasions on the Bellarine Peninsula & Geelong
Nedjelka (Neda) Walker Authorised Civil Celebrant



Wedding Ceremonies • Commitment Ceremonies
Vow Renewals • Naming Ceremonies
Funeral & Memorial Services

Mobile: 0428 319 405
Email: info@treasurethemoment.com.au



SENIORS DISCOUNT

WE SPECIALISE IN -

- 24/7 Emergency Service
- Maintenance
- Hot Water Services
- Blocked Drains
- Bathroom Renovations
- Roof Vac - Gutter Cleaning

SEASCAPE PLUMBING

Your Local Bellarine Plumber! Lic# 53223.

PH: 0404 049 868 www.seascopeplumbing.com.au

BELLARINE WANDERERS

This last month we have been near and far, with lots of different sceneries and interests.

We have walked along Griggs Creek and around Beacon Point. Also, we have walked around Point Richards, as well as discovering the smaller parks in Barwon Heads, and finally, a trip to the You Yangs.

We walk every Thursday morning starting at 9.30am for an 80 min walk. We also walk earlier on Tuesday mornings; this is for a 165min walk.

We welcomed a few new walkers this month, and if you are interested in walking, please contact the SpringDale Office Ph: 5253 1960
Rob Gardner



SpringDale Pole Walking Group

SpringDale Pole Walking Group meets Monday mornings at 8.50am at scheduled sites (list available from SpringDale office). We walk for 30 minutes one way and then back to the start. This allows faster walkers the opportunity to walk further but everyone ends up finishing at the same time. Everyone is welcome to come out for coffee after the walk. We are a friendly, happy group. New members very welcome.

Brenda Hunter for the group.



BELLARINE AGRICULTURAL SHOW 2025 - THE KID'S TRAIL

We are pleased to announce that the **Kid's Adventure Trail**, will be making a triumphant return to the 2025 Bellarine Show.

Popular with kids of all ages, the Trail gives children the opportunity to not only build their very own money box, but to move around the Show site, and, learn about the environment and experience the many sights and sounds, that can only be found at agricultural shows.

We can't wait to see you at the 2025 **Bellarine Show on Sunday March 9, 2025**



1st Drysdale Scouts Christmas Tree Fundraiser from Small (4-5ft) \$65, Medium \$75, Large \$85, Xlarge \$105 as well as tree stands.

All online orders are delivered **free** for more details visit our web site <https://1stdrysdale.com/christmas-tree-sales> or our face book page F@1stdrysdale. This year deliveries will be on **Sat 30 Nov & Sat 7 Dec**.

Prefer to hand pick your tree – a range of trees and stands for sale at Drysdale Scout Hall: **Sat 30 Nov, Sun 1, Sat 7 & Sun 8 Dec 9am-3pm**.

For \$12 we will pickup and dispose of your tree on Sat 4 Jan 2025 Please contact us via our website or Facebook page (see above).

Clifton Springs Curlewis Coastcare Group

Thanks to everyone who helped out at the last 5 Habitat Restoration sessions at Clifton Springs Beach. We have made significant improvement, with 6 truckloads of weeds removed.



The next Habitat Restoration - weeding working bee -

Where: The Dell, Clifton Springs

When: Wed 20th November, 9:30 - 11:45am.

Meet: at The Dell, clifftop carpark near the lookout. We'll walk alongside the Golf Course to our work site at the Second Dell. Look out for signage.

Join Clifton Springs Curlewis Coastcare volunteers, and City of Greater Geelong Nature Reserve Officers, for our last working bee in 2024. We'll celebrate everyone's effort this year protecting the fragile coastline, with tea and coffee afterwards. All welcome.

Our AGM will be in November to which you are all welcome.

The group will have a break from formal group weeding during summer, but will assist BCN with their "Beachcombing" activities.

We will continue the regular Waterwatch activity with water testing at two sites. This is planned for the first Monday of each month. We meet at 9.30am at the Clifton Springs boat harbour carpark. Come and visit us if you are just curious, or want to participate.

We hope our grant applications for 2025 are successful, so that next year we'll also be including some planting sessions in Curlewis and Clifton Springs.

Hans Heine and Rob Gardner



JAN'S ENGRAVING & TROPHIES



Latest designs in Trophies, Medals & Awards.

Call Jan to discuss your needs.

0425 796 165

19 Centennial Blvd. Curlewis.

E: jan@jansengraving.com.au

www.jansengraving.com.au



DESIGN • PRINT • FINISH • 5251 1735

New Address Unit 4, 82-84 Murradoc Rd, Drysdale
tavidsprint@gmail.com • www.tavids.com.au

BELLARINE AUTO SERVICE

5253 1644
0403 993 342



Quality Mechanical Repairs Since 1990

6-8 Mortimer St. Drysdale



We service and repair all makes and models, LPG, Diesel and Petrol vehicles.

www.bellarineautoservice.com



Neil Wise is a highly experienced physiotherapist with over 30 years of experience in Private Practice,



- Private, Concession & Aged Pension rates available – no referral required
- DVA, Workcover, TAC, CDM (Medicare) patients welcomed with referral

P: 5257 1832

1 Mouchemore Avenue, St Leonards

E: info@stleonardsphysiobythebay.com.au

W: www.stleonardsphysiobythebay.com.au



Reliable Service

- LOCAL • COUNTRY
- NEW SOUTH WALES
- SOUTH AUSTRALIA



Drysdale REMOVALS & STORAGE
03 5251 3674



Our excited club members on opening day.



Whack it, Smack it, Hoop it, Jump it!

Interested in croquet? Croquet is a fun sport which stimulates the mind and is good exercise for the body but not necessarily high impact and is suitable for young, older and in between.

Come along to Drysdale Croquet Club on Tuesday mornings to have a go at hitting a ball and bring a friend or two! There are many friendly members who will help show you how and equipment is provided to try out with.

Apart from the Tuesday learning and training day, we have 3 other social playing days in the week and there is always good company and a cuppa included. There are also many opportunities for more competitive play as well.

Recently, we celebrated our 2024-25 season opening day with a traditional 'Running of the Hoop' which was carried out by Gerald Edgar, our most senior member at 96, Gerald attends as much as he can. Our members live locally or travel from Ocean Grove, Point Lonsdale, Indented Head, Leopold and St. Leonard's.

The Croquet Club, established in 1950, is part of the Drysdale Bowling and Croquet Club and the two courts are situated on Clifton Springs Rd, near to the Medical Clinic.

For more details, please call or text Jenny on 0428 740 591 or turn up at 9:30am on a Tuesday. We'd love to see you there.

Jenny Payne

GEELONG & BELLARINE PLUMBING

24/7 EMERGENCY RESPONSE SERVICE

- All general plumbing & maintenance
- Bathroom & kitchen renovations
- Blocked drains & camera inspections
- Hot water service repairs & installation
- Gasfitting
- Drainage
- Roofing & Gutters
- Excavations

Call your local plumber with over 15 years' experience for a NO OBLIGATION FREE QUOTE

JAKE 0433 299 338



DRYSDALE Shop 1, 15 Hancock St.
REMEDIAL Drysdale
THERAPIES T: 5251 3410

www.drysdalere Remedialtherapies.com.au

HAVE YOU EVER HEARD ABOUT BOWEN THERAPY?

It's gentle and it seems to help when nothing else does.

Bowen Therapy helps your body rebalance and recharge itself. It is a very gentle technique that brings the body into relaxation where it can repair and rebuild. Its a very effective treatment for stress release and many other physical conditions, joint and muscle pains.

Bowen Therapy may help with

- Headaches
- Vertigo
- Long COVID Symptoms
- Concussion
- Sinus Congestion
- Lower back pain
- Hip pain
- Neck & shoulder pain
- Depression, Grief, stress and anxiety.

- Remedial Massage
- Bowen Therapy
- Relaxation Massage
- Hot Stone Massage
- Myofascial Cupping
- Dry Needling
- Children's Therapies
- Sports Performance



Book online



choice

heating and cooling

solar

(03) 5251 2771

5B 35-37 Murradoc Road Drysdale

www.ecochoiceheatcool.com.au

No Deposit Finance / Credit Card Payments



SPECIALIST DEALER

Split Systems

2.5kW to 9kW

- Fully Installed - 5 Year Warranty

Ducted Systems

5kW to 25kW

- Fully Installed - 5 Year Warranty



SENSITIVE CHOICE

APPROVED
DAIKIN SPLIT SYSTEMS



Victorian Energy Upgrades Rebates Available

Premium Energy Efficient Heating & Cooling

Premium Solar Systems

6kW to 20kW

Enquire about a FREE Home Assessment



ENPHASE. SUNGROW Fronius CanadianSolar

- Inverter - 10 Year Warranty
- Premium Panels - All Black 25 Year Product Warranty

SUNGROW Battery Packages

Enquire about a FREE Home Assessment

Battery Ready



9kW to 19kW
Battery Storage

Premium Panels 25 Year Warranty
Sungrow 10 Year Warranty



Tesla Powerwall

Key Features:
Integrated Battery inverter

Capacity:
13.5 kWh
10 year warranty

TESLA
POWERWALL
TESLA HOME BATTERY



Other Battery options available. Call us for details.

Enquire about a FREE Home Assessment

THE FUTURE OF HOT WATER IS HERE

Air-source CO2 Heat Pump Hot Water System

RECLAIM 315L

- Industry leading technology
- Naturally environmentally friendly
- Fully Solar PV compatible
- Industry first smart controller
 - 10 year warranty
- Australian made tank & controller
- Global Warming Potential refrigerant rating of 1 indicating that the system is the most environmentally friendly hot water system in the market



Enquire about a FREE Home Assessment

istore 180L/270L

- Reduce energy costs
- Registered Clean Energy product
- Fully Solar PV compatible
- All-In-One Heat Pump
- 5 year comprehensive warranty all-in-one heat pump



All Warranty and Servicing by Eco Choice

LIC: Plumbing 49132 - Elec 20281 - Arctick AU38204 - Solar A8699184