



# The SpringDale Messenger

May 2025  
Volume 35 Issue 4



ABN 21 404 220 267

Compiled & Published by the SpringDale Neighbourhood Centre Inc.

*On behalf  
of SpringDale  
Neighbourhood Centre,  
we thank everyone, who helps  
SpringDale to be the vibrant  
Community Organisation it is  
today. Over the last 35 years  
SpringDale has grown and  
evolved with our community.  
Congratulations  
to you all.*

*Floral arrangement by Jenny Finley - Stylish Stems  
Photograph by La Este Film Timeless Wedding Photography & Films*

# MAY 2025

## Community Calendar

SpringDale Community Calendar is a SpringDale Neighbourhood Centre initiative to support the whole community. If you wish to place your event in the calendar and further issues of The SpringDale Messenger please email, write or call the event details to our office.

SpringDale Neighbourhood Centre Opening Hours Monday to Friday 9am-5pm and by appointment.

Fri/Sat	2/3	Theatre 3triple2 - The Farndale Avenue Housing Estate Townswomen's Guild Dramatic Society Murder Mystery - SpringDale Hall - Fri - 7.30pm and Sat 2pm & 7.30pm
Fri-Sun	2-4	Sacrededge Festival - Queenscliff
Saturday	3	Harvest Basket Produce Swap
Sunday	4	Niusia - 4pm - Potato Shed
Tuesday	6	Welcome morning tea - 10am - SpringDale
Friday	9	Drysdale Primary School - 150 Year Celebration
Sunday	11	Mothers Day
Monday	12-18	Neighbourhood House Week
Tuesday	13	SpringDale Dining Group - Leopold Sportsmans Club - 6pm bookings essential
Saturday	17	The Exotic Lives of Lola Montez - 8pm - Potato Shed
Sunday	18	Salute to the Old Mill Portarlinton, Exhibition and Talk - Old Courthouse Museum, Open 10.30am to 4pm, Talk at 2pm
Monday	19-25	Volunteers Week
Wednesday	21	SpringDale Lunch Bunch - Queenscliff Bowls Club - 12noon bookings essential
Sunday	25	Reconciliation in the Park - Johnstone Park Geelong - 10am-3pm
Tuesday	27	All You Need Is Love - 10.30am - Potato Shed

**Reminder**  
Bookings & copy required by 1 May for the June 2025 issue

### Coming up in June 2024

Monday	23	Safe Seats Safe Kids - bookings through Safe Seats Safe Kids website
--------	----	--

**JOIN NOW** Be eligible to be part of and participate fully in our SpringDale Groups.

**SpringDale Membership - \$12 per year or \$100 for whole of life.**



## SpringDale Messenger

Compiled & Published by the SpringDale Neighbourhood Centre Inc. A0024916V. 17-21 High Street, Drysdale Vic 3222.

**COPY DEADLINE JUNE 2025**  
Bookings/copy required by 1 May.  
Dist: 25 May 2024  
Circ: 15,000 copies home & shop delivered  
Available online for millions to read  
[https://docs.springdale.org.au/Msngr\\_2025/3504\\_MsngrMay2025.pdf](https://docs.springdale.org.au/Msngr_2025/3504_MsngrMay2025.pdf)

### Connecting Your Business with our Community

**For all Advertising enquiries:**  
Email: office@springdale.org.au  
Phone: (03) 5253 1960  
Online: Book an advertisement online.  
Advertisements: **Must be supplied with all text outlined.** All requirements are listed at springdale.org.au

**For all Editorial enquiries:**  
Email: messenger@springdale.org.au  
Phone: (03) 5253 1960  
Online: Use the online form to lodge an article at springdale.org.au

**Editorial:** All contributors are asked to provide their articles as Word doc, PDF, email or online for ease of processing. Contributions are still accepted as written copy but need to be submitted in the week prior to our copy deadline.

**Editing of Contributors Material:** Contributors should note that the right to modify submitted articles is retained by The SpringDale Messenger Committee as per our policy. Views expressed in this newsletter are not necessarily the views of the publisher, the SpringDale Neighbourhood Centre Inc.

**Images:** Please supply high resolution images, minimum 300dpi at print size or larger than a 1MG attachment. Images placed in Word files will **not be accepted.**

**Distribution:** Distributed throughout Drysdale, Clifton Springs, Portarlinton, Indented Head, St Leonards, Ocean Grove and selected businesses on the Bellarine Peninsula.

**Art & Design by Jo Aspland Graphic Design 0438 055 679**

The SpringDale Messenger is a locally produced publication.



This copy is one of almost 2 million community newspapers printing annually by members of Community Newspaper Association Victoria



SpringDale Neighbourhood Centre Inc. acknowledges the support of:



We acknowledge the Traditional Custodians of the land, the Wadawurrung People of the Kulin Nation. We pay our respects to Elders past and present, and emerging leaders.



# Coordinator's News



Anne Brackley

Over the last few years, I have listened to my body better than I used to do. I now, realise when I start to get stressed trying to finish a task, report or project, I need to take a breath and try to finish, whatever it is, quickly. At these times, you may hear me saying "Come on Anne you can do it!" Then work out how to make sure I don't get stressed next time. One of the hardest parts of this, is observing and realising what is happening.

This can take a few tries, but eventually, setting up the systems to make it easier to achieve the things needed to be finished, in the time I have. It's also important to share the load, to trust people to do a great job and then to monitor the results to ensure the outcomes have the desired results.

Monitoring is something I am still working on. Like most tasks, you usually get better, the more you exercise that muscle or practice that task.

I have found that setting up a comprehensive plan can also help. Having checklists is a great way to monitor progress and if people want to help, the checklist can help to allow them to decide what role to play. Especially when it's a big task with lots of opportunities for people to help.

We also need to be thinking strategically and long term. SpringDale has had a strategic plan that has helped us to navigate through the last 5 years and we will start a new strategic planning cycle in the next few months. If you have any ideas that you would like to share so we can develop the best plan to help us over the next 5 years, please let us know. Perhaps you could answer these questions - What have you appreciated us doing? What have you not like us doing? What do you think we should be doing? And please drop these answers into the SpringDale office, or email messenger@springdale.org.au or post to SpringDale 17-21 High Street, Drysdale, 3222.

Thanks so much for your support again. So many people see what we are doing and offer to help if they can. As we approach Neighbourhood House and Volunteer weeks, this month, please know that we appreciate all the support we receive under both of these headings.

Looking forward to seeing you at SpringDale when you can fit us into your busy life.

Kind regards

Anne Brackley for Team SpringDale.

## Courses & Opportunities

### Egyptology

A beginner's guide to the Ancient Egyptian Culture - covering timelines of the Old/ Middle and New Kingdoms, Mythology and funeral customs, basic hieroglyphs, architecture and culture

**Instructor:** Allison Young

**Dates/times:** Fri 9 May - 30 May 1-3pm

**Fee:** \$160 or conc \$85

### SpringDale Chess Group

meets Wednesdays 3pm-4.30pm all welcome including people new to Chess. Some of the benefits you may gain from playing chess are: Memory improvement,

Teaches winning and losing, Graceful acceptance, Consequence awareness, Determines and focuses, Educates with strategy, Critical thinking tool, Cognitive benefits, Boosts confidence, Competitive resilience, Improves creativity, Outside-the-box thinking, Calm under pressure, Relaxation skill.



Subscribe to our webmail and stay up to date with Courses, Groups & Events

**neighbourhood ripples**  
**HOUSE WEEK 12 - 18 MAY '25** **OF CHANGE**

Come to SpringDale for a scrumptious afternoon tea Wednesday 14 May 2-3.30pm and for a discussion. The topic will be: the future you would like to see for SpringDale and our community. As SpringDale starts to prepare its new Strategic Plan, please come and be part of the initial discussions. RSVP 5253 1960 or email membership@springdale.org.au

**Friendly Cuppa & Chat**

Tues 6 May 10-11am rsvp SpringDale 5253 1960

## Be part of the upcoming edition now! Business & Services on the Bellarine 2025/26 Directory



**It's all about connecting people**

Business & Services On The Bellarine 2025/26 Directory is a tool that other businesses and householders are coming to rely upon for information about local services.

For information about colour display advertisement specifications and costings, please phone SpringDale Neighbourhood Centre (03) 52531960.

**Support Your Local SpringDale Neighbourhood Centre - Advertise Locally**

**SpringDale Lunch Bunch**

The SpringDale Lunch Bunch are at Queenscliff Bowls Club Wednesday 21 May 12noon. Bookings essential ring Margaret 0418 370 857.

**SpringDale DINING Group**

SpringDale Dining group are at Leopold Sporties Tuesday 13 May 6pm. Bookings essential ring SpringDale 5253 1960 or email dining@springdale.org.au

**QUOTE OF THE MONTH**

*My mission in life is not merely to survive, but to thrive; and to do so with some passion, some compassion, some humour, and some style. Maya Angelou*

Anne Brackley - Quote curator

## Alison Marchant Member for Bellarine

### Bellarine Sporting Facilities



As a State Government, we are supporting the Bellarine to be a healthy and active community, and a big part of this, is listening to what facilities the community requires across the electorate.

Excitingly, works will begin this year on the second stage of the North Bellarine Aquatic Centre, building an indoor aquatic facility that meets the needs of our community. Complimentary to the existing 50 metre outdoor pool, this new facility will include an indoor eight-lane 25 metre pool and a warm water exercise pool, both equipped with ramps for an accessible entry and exit, as well as a gymnasium, two group exercise studios and a café and social space.

It has been great to see the community enjoy the outdoor pool over the warmer months; however, I am proud that we are delivering the world-class indoor facilities the Bellarine community have long advocated for, that can be enjoyed all year round.

This isn't the only exciting update on the Bellarine, as upgrades are currently underway to improve the facilities at Portarlington Recreation Reserve, the home to Portarlington Football and Netball Club, Portarlington Cricket Club, Tennis Club, Pony Club and Bellarine Agricultural Society.

Safety upgrades are also progressing for Collendina Reserve that will make it safer for members of the Ocean Grove Cobras Junior

Football Club and Collendina Cobras Cricket club, as well as their families and opposing teams, to safely enter and move around the reserve.

Wallington Reserve, the home to Wallington Cricket Club and Bellarine Bears Baseball Club, are set to have their pavilion upgraded to improve all-abilities access, changerooms and social spaces, and the Barwon Heads Football Netball Club have funding to soon redevelop their clubrooms and female changerooms.

All of these projects could not be undertaken without the support and advocacy of local Bellarine sporting clubs and communities. I have met with many community members who are advocating for more indoor sports facilities in the Bellarine, particularly for basketball, pickleball and badminton. It is important that there are adequate sporting facilities available locally and I will continue to advocate on behalf of the Bellarine community with the City of Greater Geelong and all stakeholders to explore future avenues.

### Congratulatory Messages for Milestone Birthdays and Wedding Anniversaries

If you or a member of your immediate family are about to celebrate a milestone birthday or wedding anniversary, my office can arrange congratulatory messages for the following:

- 90th Birthday from Prime Minister & Premier.
- 100th Birthday, from the King, Governor General, Prime Minister, Victorian Governor & Premier.
- 50th Wedding Anniversary from Governor General, Prime Minister, Victorian

Governor & Premier.

- 60th Wedding Anniversary, from the King, Governor General, Prime Minister, Victorian Governor & Premier.
- You can also receive messages for 65th & 70th wedding anniversaries and for all birthdays over 100.

**As your local member of State Government, please contact my office on 03 5250 1987 or via email [alison.marchant@parliament.vic.gov.au](mailto:alison.marchant@parliament.vic.gov.au) if you require any assistance.**



## Safe Seats, Safe Kids Program

**Mon 23rd June** in the carpark adjacent to Springdale Neighbourhood Centre

**Time 10am-2pm**

Bookings Required

<https://safeseatssafekids.com.au/venues-mec/>

Sponsored by Lions Club of Geelong Breakfast Inc and Ebejer & Associates Lawyers



# Alison Marchant.

## Member for Bellarine

### The Pharmacy Pilot Program is improving access to health care in the Bellarine.

There are eight local pharmacies on the Bellarine included in this pilot offering pharmacy consultations for:

- UTIs
- Mild skin conditions
- Resupply of the contraceptive pill
- A range of vaccinations for travel and other health vaccines

Scan the QR code for more information about the Pharmacy Pilot.



📍 Wadawurrung Country, Shop G066, Gateway Plaza, 641-659 Bellarine Highway, Leopold VIC 3224

☎ 03 5250 1987

✉ [alison.marchant@parliament.vic.gov.au](mailto:alison.marchant@parliament.vic.gov.au)

🌐 [www.alisonmarchantmp.com.au](http://www.alisonmarchantmp.com.au)

# POTATO SHED

As we approach the mid-year point of 2025 (where has the time gone?) the Potato Shed continues to bring the best in performing arts on the Bellarine to you for your viewing delight.

How do you honour the legacy of a woman you hardly knew, and didn't really like? These questions are at the heart of **Niusia**, 4pm Sunday 4 May.

Niusia was a Holocaust survivor. Charming, savvy, and-if you ask her granddaughter, Beth-a pretty mean lady. She's ready to learn who Niusia was, but soon discovers there is no straightforward story.

Reading, interviewing, and weaving memories and handed-down stories, Beth sets out to understand her nana's complex legacy. She gives voice to the cruel thoughts you shouldn't have about your holocaust-surviving nana, stumbles upon her own Jewishness (something she used only to evade school church services), and ultimately confronts how deeply embedded these horrific memories are in her family line. She asks: "I've somehow always known these stories. When did I learn these stories, and how?"

Another grand and larger-than-life woman is celebrated in **The Exotic Lives of Lola Montez**, 8pm Saturday 17 May. The tale of the wildest showgirl in the known world is brought to life by the ethereal Caroline Lee, a direct descendant of Montez.

In 1855, Lola Montez, the wildest showgirl of the known world, toured Australia and

its goldfields. The scandal is legend. She horsewhipped the editor of the Ballarat Times (for a bad review). Swung down mine-shafts on a single rope with champagne in hand. Escaped arrest dressed only in her jewels. Showered with gold nuggets and insults. Her erotic Spider Dance was "the most libertinish and indelicate performance that could be given on the public stage" (Sydney Morning Herald 1855).

Produced by the internationally renowned Finucane & Smith.

The Beatles will be front and centre when **All You Need is Love** lands 10:30am Tuesday 27 May. Colin Mockett explains who wrote which song, to whom, and why - then Adam Parsons performs it with his astonishing flair. As always, morning tea is included.

All our shows are on sale via our website, [potatoshed.com.au](http://potatoshed.com.au) or in person at the Box Office, Monday-Friday 10am - 4pm. You can also call our Box Office on 5251 1998 and book with your credit card.

See you at the Shed!

# POTATO SHED

## WIN DOUBLE PASS to The Exotic Lives of Lola Montez

Saturday 17 May 8pm

*Note: Lola may contain traces of nudity, burlesque, wild dancing and fabulous singing!*



To enter fill out the coupon, send or deliver to: SpringDale Neighbourhood Centre High St Drysdale

Name: \_\_\_\_\_

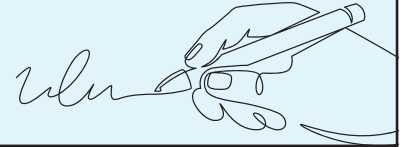
Address: \_\_\_\_\_

Phone No: \_\_\_\_\_

**COMPETITION CLOSES 9 FRIDAY MAY 4PM**

## JP Document Signing Service at SpringDale

Wednesday's  
10am till 12 noon  
no appointments needed



# WHAT'S ON



### NIUSIA



SUN 4 MAY 4PM

How do you honour the legacy of a woman you hardly knew, and didn't really like? These questions are at the heart of **Niusia**. This modern Australian play explores the sometimes-complex relationship between a grand-daughter and her Holocaust survivor grandmother.

Tickets: Adult \$40 Conc \$35 Under 25 \$25

### THE EXOTIC LIVES OF LOLA MONTEZ



SAT 17 MAY 8PM

Another grand and larger-than-life woman is celebrated in **The Exotic Lives of Lola Montez**. The tale of the wildest showgirl in the known world is brought to life by the ethereal **Caroline Lee** as **Lola Montez**, produced by **Finucane & Smith**.

Tickets: Cabaret: Adult \$45 Adult \$40  
Theatre: Conc \$40 Conc \$35  
Under 25: \$25

### ALL YOU NEED IS LOVE



Our popular and delicious Morning Tea is back!

MORNING SHOWTIME

TUES 27 MAY 10.30AM

The Beatles will be front and centre when **All You Need is Love**. **Colin Mockett** explains who wrote which song, to whom, and why - then **Adam Parsons** performs it with his astonishing flair.

All Tickets: \$20 Including Morning Tea

41 Peninsula Drive, Drysdale VIC 3222  
[www.potatoshed.com.au](http://www.potatoshed.com.au)

potatosheddrysdale  
potatosheddrysdale

Book online at [WWW.POTATOSHED.COM.AU](http://WWW.POTATOSHED.COM.AU)  
Or with your CREDIT CARD on 5251 1998.

Geelong's premier Entertainment venue on the Bellarine Peninsula

By Cr Rowan D. Story AM, RFD



Clifton Springs, Curlewis and Drysdale residents feel safe where they live, according to the results of the 2024 Geelong Preventative Health Survey. The survey is held every three to four years and provides a snapshot of the health and wellbeing of people across Greater Geelong.

It measures key indicators including healthy eating, physical activity, alcohol consumption, smoking and vaping, and a range of personal safety and wellbeing factors.

The survey included the results of thousands of households across Greater Geelong, which were then divided into geographic 'Planning Areas' to identify areas of health and social inequity. Clifton Springs, Drysdale, Bellarine and Curlewis formed Planning Area 3.

The survey found that participants in this planning area tended to feel safer where they live compared to most suburbs across Greater Geelong, with 95 per cent stating they felt "safe" or "very safe". The survey also confirmed what we already know - we love sport! Forty-two percent of participants from Planning Area 3 belong to a sports club or group.

There are certainly areas for improvement though. Twenty-four per cent of participants in the area were at risk of short-term harm from alcohol, while 29 per cent were at lifetime risk of harm. Twenty-six percent of participants in the area were classified as sedentary, meaning they're lacking exercise and activity in their lives.

Overall, in Greater Geelong, participants scored higher than the state average across many health and wellbeing indicators, with 78 per cent reporting high satisfaction with life.

As Council's Health portfolio chair, the information gathered in the survey is a valuable resource I can draw on when considering the varied needs of people across Greater Geelong. This information can help us in our decision-making around programs and initiatives that respond to these community needs.

I look forward to working with Council to address areas of improvement and continue to make our region a safe and healthy place to live.



## North Bellarine Aquatic Centre

I continue to be pleased by the number of people who talk to me about the benefits of attending the 50m pool at the North Bellarine Aquatic Centre. It is so pleasing that it will stay open over the cooler months - open 6am - 10am Monday to Friday and 8am - 12noon Saturday until 1 November when longer hours should begin again.

The White Water Aerobics on Mondays and Fridays have been very popular and although the instructors and participants would love it to continue over winter, that service will unfortunately not be offered.

Over the last little while, a number of people have asked about Stage two development of the North Bellarine Aquatic Centre. Below is the current position from City of Greater Geelong.

A total of \$40 million in state and federal funding has now been secured for Stage Two of the North Bellarine Aquatic Centre. The Victorian and Australian governments have each committed \$20 million to the project, while the City of Greater Geelong will contribute up to \$300,000.

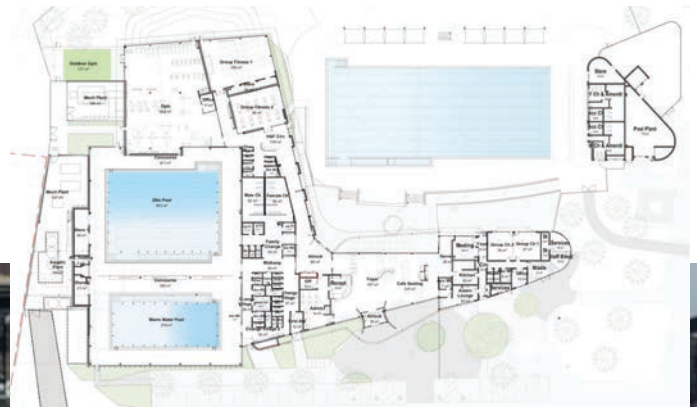
Stage Two builds on the extremely well-received Stage One, adding two new indoor pools, along with a gym, two group fitness rooms and a café.

The indoor pools will complement the 50-metre outdoor pool with a 25-metre indoor pool and a warm water exercise pool in a dedicated pool hall. Both pools will promote accessibility, offering ramps for easy entry and exit.

The project is scheduled for completion in late 2027, and will support the growing community around Drysdale through swimming, fitness, learn-to-swim programs and warm water therapy.

Project website - [www.geelongaustralia.com.au/nbacproject/default.aspx](http://www.geelongaustralia.com.au/nbacproject/default.aspx)

**Anne Brackley** advocate for the North Bellarine Aquatic Centre



# Accommodation

Male senior is seeking a person to share his Drysdale home

- Furnished bedroom with new split system • Private bathroom
- Fridge & Pantry cupboard • 10 minute walk to the shops • Pet is welcome

**\$180 plus ½ utilities Ph Alan 0459 368 232**

# S.H.O.W.

Sustainable Housing for Older Women  
Bellarine

## Re-imagining Housing For Seniors:

The advert on T.V. referred to The Golden Years. I hadn't heard that expression for a long time. Perhaps that's because, for a large number of older people, these years after retirement are anything but "golden".

One definition of the term reads, "the later years of a person's life, particularly after retirement, often associated with leisure, relaxation and enjoyment."

It sounds idyllic, but the fact is that 68% of Australian Seniors who are renting are experiencing "rental stress".

That's why we have lots of groups and organisations such as ours - S.H.O.W., banding together to do something about the way developers and governments continue to mismanage the way we do "housing" for seniors.

Your local Sustainable Housing for Older Women group, (SHOW) is dedicated to finding some solutions to this issue.

Why can't we have smaller units built in groups of 4 or 5. They would share amenities such as a larger kitchen/dining area, a community garden and an outdoor space. This would offer a sense of belonging to a community where residents can get to know and look out for each other.

More dwellings can be built on a block that usually only houses one. These smaller homes would cost less to build.

Community minded investors and developers could then contribute to easing the stress and financial burden on senior tenants by offering long term leases and lower rents.

Many people that we speak to are shocked and concerned at the increasing financial distress among seniors. Some experiencing it themselves or are seeing it firsthand amongst friends.

If you are concerned enough to want to help, please contact me and I can fill you in on what S.H.O.W. is hoping to achieve in the future.

You might remember from last month: ***"The great use of life is to spend it for something that will outlast it."***

We're hoping to find lasting solutions.

Dianne Bennett

diannebennett4@hotmail.com



SpringDale Repair Café is gaining momentum with 3 new volunteers attending the last Repair Café. A very special Saint Joseph figurine was repaired and returned to his very grateful home host. Apparently Saint Joseph needed some extensive attention and once received was returned to almost new condition.

We are looking for people with clock repairing skills - just in case there is anyone out there? Please contact SpringDale to offer your skills. Phone 5253 1960.



## Heritage Cameo Conveyancing

'Your Local Conveyancer'



### Services Include

- Free Pre-Purchase Advice
- Subdivisions
- Property Transfers
- Purchase Contracts
- Sale contracts – Section 32 preparation

**Shannon Calder**  
Manager – Bellarine Office



### Heritage Cameo Conveyancing

'Professional and Personal Service Guaranteed'

**Bellarine Office:**

8 Murradoc Road, Drysdale, Vic 3222  
E: shannon@heritagecameo.com.au  
T: 03 5251 3950



Contact your local friendly conveyancer Shannon for all your conveyancing needs and questions.



## HUNTERS REAL ESTATE

- Property Sales
- Property Management
- Holiday Rentals

**2 LOCATIONS  
ON THE BELLARINE**

4B Brown St 1389 Murradoc Rd  
Portarlington St Leonards  
**5259 1103 5215 9327**

[huntersrealestate.com.au](http://huntersrealestate.com.au)



**lee martin.**  
Director.  
0400 957 839

**andrew kibbis.**  
Director.  
0411 424 412

**now open in drysdale @ shop 5/8 high street.  
P: 03 5297 3888**



# Quilters

Our members have been busy these past few months, sewing and putting together more comfort quilts for charity groups in the Bellarine region.

We presented 52 quilts made with love to two very happy organisations who were so excited to receive them and distribute them to those in need.

We love to see our comfort quilts put a smile on someone's face and know its there's to keep, photos were taken at the Seniors hub in Drysdale and can be provided on request.

Representatives from MELI and SAVC were Holly and Viv and they were overwhelmed and humbled by our generosity.

Viv from MELI collected 28 quilts made by our dedicated members that will be distributed to recipients assisted by MELI and Holly from SAVC- Sexual Assault & Violence Centre accepted 24 handmade comfort quilts.

**Claudia Welter** - on behalf of the Bellarine quilters quilting group Drysdale



## CARPENTER

**Servicing Geelong and the Bellarine Peninsula**

- Renovations and Restorations
- Weatherboards and Fascias
- Door and Window repairs
- Decks and Pergolas
- Interior repair and upgrades

**25 years Trade experience**

**0409 411 576**

## i.Conveyancing.co

Pty Ltd ABN 18 604 431 950

**Making Buying & Selling Property Easy**

### Experience

Fiona Barber is the managing director with over 20 years experience in the conveyancing industry working for law firms, banks, and conveyancing offices around Victoria.

Fiona is local to the area and offers a friendly, professional and efficient experience from start to finish.

**Fiona Barber**  
- Licensed Conveyancer

P: 97473300  
E: fiona@iconveyancingco.com.au  
www.iconveyancingco.com.au  
3 Brown Street Portarlington



## SpringDale Felt & Textile Artists 8th Annual Exhibition



After the resounding success of last year's Wonder of Wool exhibition, the SpringDale Felt & Textile Artists are thrilled to announce the launch of their 8th annual exhibition, Through the Looking Glass. Set to take place over the long weekend of June 7th and 8th, 2025, the exhibition promises to be an exciting and diverse showcase of the artists' talents.

This year's theme, Through the Looking Glass, is inspired by the many interpretations of the phrase, from mirrors and magnifying glasses to telescopes and more. While elements of Lewis Carroll's Alice in Wonderland will undoubtedly feature, including whimsical creations like felted top hats and a recreation of the iconic Mad Hatter's Tea Party with teapots, cups, and cakes, the exhibition will also highlight a broad range of felt and textile art. Expect to see everything from beautiful scarves, wraps, and gloves to needle-felted creations, decorative items, and much more.

"We are all excited to share our creations with the community," said a spokesperson for the group. "The positive feedback we receive makes all the effort we put into our work truly worthwhile, and we hope this year's exhibition will continue that tradition of engagement and support."

The Through the Looking Glass exhibition is a wonderful opportunity to experience the skill and creativity of local artists while enjoying a playful and thought-provoking theme.

We look forward to welcoming visitors and hope to make this year's event another memorable success.

**June 7th & 8th, 10am - 4pm**  
**SpringDale Hall - Drysdale**

## SpringDale Trivia

by Drysdale Girl Guides

1. What is the hard piece at the end of a shoelace called?
2. In what country did the first Starbucks open outside of North America?
3. What does SPF in sunscreen stand for?
4. What is a baby giraffe called?
5. What is the birthstone of May?
6. In kilometres, how long is a Marathon?
7. What is the only country to have played in every single soccer World Cup?
8. Which VFL/AFL team won the premiership cup in 1965?
9. Which five sports did women compete in during the 1900 Paris Olympics, the first with female athletes?
10. Which Fruit or Vegetable is used to make a Pickle?

Turn to page 17 to find the answers.

Drysdale Guides Meet on Thursdays during the school term from 7pm to 8:30pm. If you are interested or have any questions, please contact Anne Brackley on 0407 529 205 or go to <https://www.guidesvic.org.au/find-us/> to make an enquiry.



GIRL GUIDES

## BELLARINE BGS

GLASS & SCREENS

- Security Doors • Shower Screens
- Wardrobe Doors • Mirrors • Flyscreens
- Glass Repairs • Balustrading

7 Days A Week

Fast Glass Repairs  
Same Day Service

**Ph: (03) 5253 2301**

38 Murradoc Road Drysdale 3222  
D Ward Facsimile 03 5251 3905

## KATE LOCKHART for Corangamite

VOTE 1

Scientist. Mum. Independent.

We need greater integrity and transparency in Australian politics.

As a Community Independent I will listen, work hard and strive for:

- Integrity: Making decisions based on facts
- Equity and accessibility across work, healthcare, education, arts and sport
- Climate action to drive down the cost of living

- More affordable housing for everyone.
- Social housing for our vulnerable residents.
- Strengthening Medicare, education, aged care and NDIS

- Connecting paths for everyone to safely access local schools & shops.
- Better public transport and roads to improve productivity & reduce carbon emissions.

Yes to cheaper, more accessible renewable power. No to expensive nuclear and no new gas.

Join us: volunteer, donate, stay up to date: [www.katelockhart.au](http://www.katelockhart.au) • Vote 1 LOCKHART, Kate

Authorised by K. Lockhart, P.O. Box 121, Drysdale, VIC 3222.



## Creative Girls 'Up Cycling' Craft Group

I'm looking for expressions of interest for a "Creative Girls 'Up Cycling' Craft Group" to be held monthly at SpringDale. Looking at Starting from Thursday 19th June 2pm to 4pm then reoccurring on the 3rd Thursday afternoon of each month. With a focus on having fun sharing ideas, for creating craft works with odd bits and pieces and items that may seem like they have no further use. Please leave your name and phone number at SpringDale for me to get back to you - **Val Baker**



## DRYSDALE CRAFT SHOP



Handknitted hats, scarves, clothes, patchwork rugs, jewellery, cards, paintings, handtowels, bags, floral decor and more... *Gifts for all occasions!*

Open 11am - 4pm 7 days a week

18-20 HIGH ST DRYSDALE P: 5251 1605  
Opposite SpringDale Neighbourhood Centre

## Bespoke Bellarine Bunting



10m lengths of Bunting for hire  
\$10 for a week

For Hire & Orders contact SpringDale 03 5253 1960

## ON SALE @ SPRINGDALE



The Bokashi One Bench Bin is a handy collector of kitchen scraps, small enough to sit on the kitchen bench.



## Homestead Estate

### Live your best life with us.

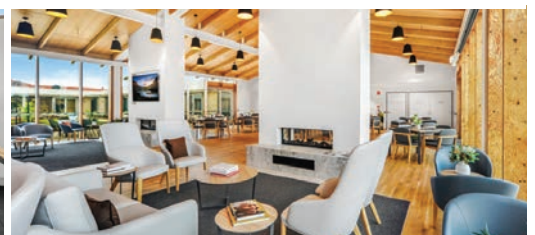
Located in Wallington, Homestead Estate is set in an idyllic rural location with views of the surrounding countryside.

The design and decor of Homestead Estate reflects the beauty of its natural environment. This welcoming atmosphere promotes a sense of style and sophistication in a rural setting and features a stunning new botanical garden.

**Call our Resident Liaison, Susan, on 0498 018 632 to book a personalised tour.**

The unique range of services and facilities available at TLC Homestead Estate include:

- On-site medical centre
- Spacious private rooms with ensuites
- Dementia support environment
- Registered nurses on-duty 24-hours a day
- State-of-the-art gymnasium
- Sports & piano bar
- Outdoor entertaining areas
- Hydrotherapy pool
- Fully-equipped café
- Virtual reality cinema
- Beauty salon



2 - 18 Homestead Avenue, Wallington | [tlchomesteadestate.com.au](http://tlchomesteadestate.com.au)

Part of the TLC Healthcare Wallington precinct

# BELLARINE CAMERA CLUB

This month's photo competition for March was a Set Subject on Steps and Stairs. So many variations on the theme and great photography. This subject was judged by Chris Reichl.

Congratulations to members who were awarded the following places:

## Prints

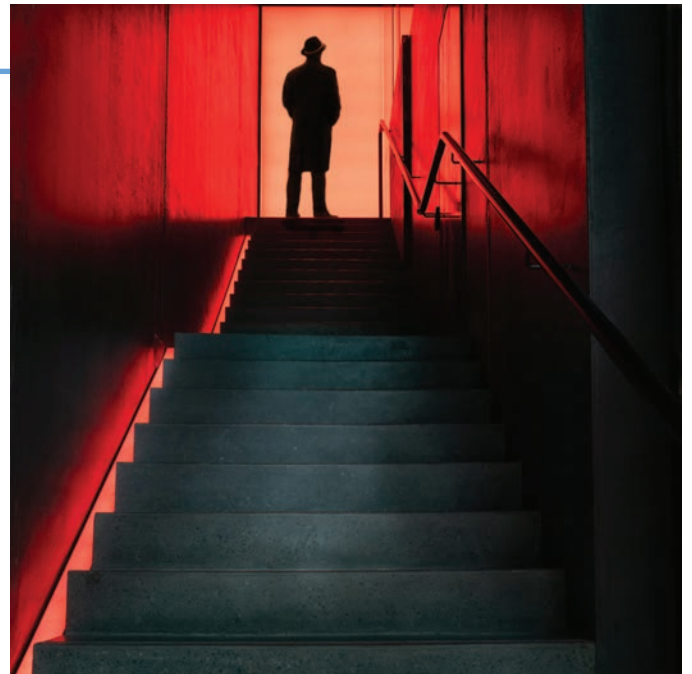
**A Grade** - 1st and Image of the Competition: Mis-Stairious by Robyn Curtis  
2nd: Tank Stairs by Sheridan Garra 3rd: Metal Stairs by Sheridan Garra  
Merit: Death Stairs by Graeme Addie

**B Grade** - 1st: Stairway to God by Geoff Evans 2nd: Yellow Treads by Keith Evans

## Electronic Digital Images

**A Grade** - 1st: Grandeur by Lynne Pearce 2nd: Stone Steps to a View by Liz Furey 3rd: Rialto by Stan Coath Merit: Close Up Stairs by Debbie Hallows  
Merit: Peeking by Neil Smith

**B Grade** - 1st: Step Above the Sea by Maria Hardie 2nd: Long Way to the Top by Geoff Evans 3rd: Shadow by Kaitlyn Johnson



Bellarine Camera Club meets at SpringDale Neighbourhood Centre at 7.30pm on the 1st and 3rd Monday of each month.

For further details see [www.bellarinecameraclub.org.au](http://www.bellarinecameraclub.org.au) or phone Debbie (president), on 0400562571.

**New members and visitors are welcome.**



Phone: 5251 3477  
Available for 24 hr assistance

*Caring and experienced staff to meet individual funeral service needs*

- ❖ Locally owned and operated family business
- ❖ Pre-paid and Pre-arranged funerals
- ❖ Chapel seating 150 plus
- ❖ Live-streaming service

[www.sheahanfunerals.com.au](http://www.sheahanfunerals.com.au)  
[enquiries@sheahanfunerals.com.au](mailto:enquiries@sheahanfunerals.com.au)  
2-4 Murradoc Road, Drysdale Vic, 3222

**25 years Gardening Experience**  
Horticulture qualified.

## Gardening Services

*Struggling to keep up with garden maintenance?*

- Garden clean ups and rejuvenation
- Reduce maintenance required in the long term.
- 100% guarantee of the weight lifting from your shoulders...

**GARDENS ABOVE & BEYOND**



Landscape Gardening & Design  
Call Briony on 0447 936 148

# You don't need all the safety gear,



# until you do.

**You might think putting on the safety gear will take longer than doing the job.**

It could be that you've done it a thousand times before. But that doesn't reduce the risk. You may not come back in one piece.

Check you've got the right safety gear for the job, visit [worksafe.vic.gov.au/safety-gear-farm](https://worksafe.vic.gov.au/safety-gear-farm)

**It's never you, until it is.**



Scan for farm safety support.



Reducing workplace harm.



# Drysdale Primary School - 150 year Celebration



**Drysdale PS will be holding a community engagement event on Friday 9th May 2025 from 3.30pm till 5pm at the school. We will have '150 year' Down balls, Scarves and Beanies for sale. It is an informal evening and everyone is welcome to join us.**

We seem to have struck a chord with many families who have had multiple generations attend Drysdale Primary School over the last almost 150 years. This time we showcase the Turner, Peel, Bryant, Lloyd, Vella families. According to Raelene there is conjecture as to whether Eva Peel (Foster) born in 1865 - who would have been 10 when the school opened, so we are unsure on this one but the five following are confirmed.

Pauline Lloyd (Bryant) 1953



Ada Turner (Peel) DOB: 16/11/1897.

Siblings: Percy, Alan, Kenneth, Hector

Muriel Bryant (Turner) DOB: 26/09/1921.

Siblings: Geoffrey, Marion, Ron Turner

Pauline Lloyd (Bryant) DOB: 31/03/1945 - 1953 photo left.

Sibling: Murray Bryant

Raelene Vella (Lloyd) DOB: 06/06/1969 - 1977 photo bottom left.

Siblings: Vicki and Kelvin Lloyd

Kirsty Vella DOB: 20/05/2001 - 2011 photo below.

Siblings: Lloyd Vella

As we lived across the road from the Primary School I remember when Mum did the end of year activities and had several students over and we did cooking. I remember there were several students all around the kitchen table and Mum was teaching us to make truffles and some other slices which the students took home.

Raelene Vella

Raelene Vella (Lloyd) 1977



Kirsty Vella 2011



## TOWN & COUNTRY ACCIDENT & BREAKDOWN TOWING



0418 535 402



**Need a Tow Truck fast?  
Call now for 24-7 Emergency Towing Service.**

## JRQ PLUMBING

- Hot Water Repair/Replacement
- Burst Pipes • Blocked Drains
- Excavation • Gutter Cleans
- Leaking Taps/Maintenance

Call Mark on **0458 405 654**  
mark@jrqlumbing.com.au





**GEELONG  
CEMETERIES TRUST**  
*Caring for our Communities*

# Drysdale Cemetery Set to Expand in 2025

Geelong Cemeteries Trust (GCT) will soon begin Stage 1 works on a long-planned extension to Drysdale Cemetery.

This project marks a significant step forward in helping to meet the growing needs of the Drysdale and Bellarine communities.

The extension will offer space for approximately 1,200 new graves and 2,500 cremation memorials. It has been carefully designed to follow the natural shape of the land, creating a peaceful environment with lawn burial areas, memorial gardens, and landscaped open space. A dry creek and pond system will manage stormwater runoff sustainably, while tree plantings and garden beds will enhance the site's natural beauty.

Stage 1 works, including civil construction and drainage features, are expected to be completed by July 2025. Landscaping will follow, with burial services anticipated to commence in 2027.

*"This extension is part of our long-term commitment to serving the Drysdale and Bellarine communities,"* says Frank de Groot, Director of Projects, Development and Innovation at GCT. *"We're not only increasing the lifespan of the cemetery, but creating a beautiful, peaceful addition that respects the area's heritage and landscape."*

The cemetery extension has been planned with cultural and environmental sensitivity in mind, guided by an approved Cultural Heritage Management Plan.

The original Drysdale Cemetery site was gazetted for cemetery purposes in 1853, and the adjoining extension gazetted in 1876 - together, they will reflect more than 170 years of local history.

For more information, contact Geelong Cemeteries Trust on 5249 3939 or email [info@gct.net.au](mailto:info@gct.net.au)



*Drysdale Cemetery showing the original site and landscape plan for the Cemetery Extension*





# Bellarine Support Group for Kinship Carers

Welcome to May everyone.

In May we celebrate and honour the most important person in our lives ... OUR MOTHERS.

This year Mother's Day is Sunday 11th May, the 2nd Sunday in May.

The children and young people in our group, Mother's Day and Father's Day are the two days which our children are confused and worried about.

A question many people have asked me.

The children in our group have been removed from their parents care for so many reasons, but deep down the children still love their biological parents with all their hearts.

Many of the children in our group will purchase a small gift for their mothers on Mother's Day. If the children are not permitted to see their biological mother, then the children hold on to the present.

But Mother's Day is celebrated in the carer's home, the children will celebrate with the main female carer in the family.

I would like to take this opportunity to say thanks to the many schools in our region, who hold Mother and Father's Day stalls for the students to purchase a special gift for Mother and Father's Day.

Most schools now have a SPECIAL PERSON'S DAY, which is awesome. These Special Person's Days are so important to the children in our group - why? - because the carers are the SPECIAL PERSON in our children's lives.

Schools are now allowing children to purchase several SPECIAL gifts - one for the Special Person in their lives and one for their biological parents.

The only problem the children have is, they hide the gift in their room then forget where their hiding spot is.

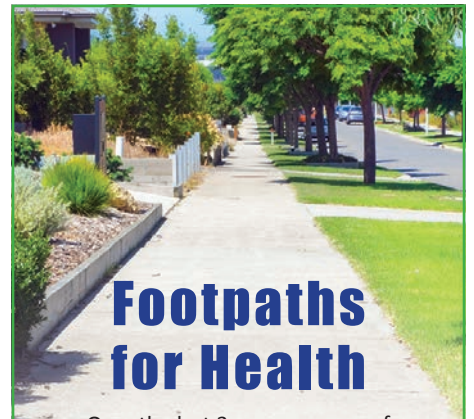
To all the mothers and female carers in our region, enjoy your SPECIAL PERSON'S DAY on Sunday 11th May, because you deserve to be spoilt for the day.

If you are a kinship carer sitting at home thinking that you are all alone on your kinship journey, come join our group. We laugh a lot talk too much and sometimes we cry, but we support each other - we all travel the same kinship journey.

Bellarine Kinship Carers meets on the first Monday of each month at SpringDale Neighbourhood Centre 10am to 12noon (not during school holidays).

Stay safe everyone.

Jeanette Hanley-Heath - 0414 308 257



## Footpaths for Health

Over the last 3 years a group of interested community members has met more than 23 times, invested more than 500 hours, we have written more than 26 articles trying to bring to the attention of the community, the many reasons why footpaths could assist our lives in many ways.

We recently met with Alison Marchant MP and Councilors Elise Wilkinson and Trent Sullivan (unfortunately Councilor Rowan Story AM, RFD was unavailable), and discussed the issues that not having footpaths can bring. We presented them with a copy of the priority footpath network for Clifton Springs and Drysdale that we have developed over the last few years. We highlighted the need for footpaths to our last remaining bank in Murradoc Road, "Community Bank Bellarine".

In the near future we look forward to the community being asked to support the Priority Footpath Network to enable people to be able to walk across the town that we call home, safely and to the many places that we would like to be able to visit.

Anne Brackley OAM

Footpaths for Health Group



### Click & Collect

\$10 per term or \$35 for the year



**Tuesday & Thursdays**

during school term

**9.15 to 10.15am**

Newcombe St., Portarlington

(enter via the preschool gate)

<https://ptl.springdale.org.au>

**Weekdays SpringDale**

Neighbourhood Centre

**9am to 5pm**

17-21 High St., Drysdale

Ph: 52531960

<https://toys.springdale.org.au>

# CORYULE CHORUS

presents

## A CONCERT TO CELEBRATE 15 YEARS OF SINGING IN HARMONY

**Sunday June 15th 2025 2.30pm**  
 St James Anglican Church Hall - 55 Collins St Drysdale

*Come along and help this popular local community choir celebrate 15 years of music-making*

Bookings preferred to assist with catering  
 Please ring Ann on 0402 280 154 to secure your booking  
**Gold coin donation includes a delicious afternoon tea**

[www.coryulechorus.com](http://www.coryulechorus.com)  
 Coryule Chorus in Affiliation with Voice Moves WA

## Thinking of a Present

### The Gift of Relaxation...

time to unwind




**Remedial Therapeutic or Relaxation Massage**

Frank at Equilibrium  
 Bellarine Massage Therapy  
[ebmassage.com.au/gift-vouchers/](http://ebmassage.com.au/gift-vouchers/)  
**0422 088 561**



**DON'T  
CROSS  
THE LINE**

Aggression and violence against workers causes harm.



Scan to learn more







# Clifton Springs Garden Club

Before I write this article I always look back at what I had written previously. This time 12 months ago I wrote that we had just had 45 mls of rain after a prolonged dry period. Sadly this time, we haven't had the 45 mls of rain and things are looking pretty dry. We certainly do have minnie micro climates around the Bellarine, which makes it tricky when trying to decide what to grow in your garden. Where I live, we often miss out on rain/storms/wind that Drysdale and Geelong get. I can stand in my front garden and watch and hear the storms go around us, add a very sandy soil to this and shade from large trees in my neighbour's house and you have a conundrum as to what plants would be suitable to plant. Another anomaly is I live very close to the bay, but my soil is not salty and my plants do not seem to be affected by the sea air. So, I have taken a very unscientific approach to my garden and planted those plants that I love and if they grow it is a bonus and if they don't, then I try something else. I have to say I have been very lucky as I have not lost too many precious plants.

Our April outing was to Bellarine Springs Village in Drysdale. Our newly appointed President Maria, took us on a very interesting tour of the two water basins contained within the village, where lots of bird attracting native plants have been planted out; the Happy Garden that both residents and village gardeners tend; and the village veggie garden. The Veggie Garden group grow and harvest fresh veggies and herbs which are made available for the residents. Compost made from veggie & fruit peels contributed by residents is used on the veggies - a great way to make use of the scraps and fulfilling an interest in gardening.

A most interesting day was finished with a scrumptious afternoon tea.

At the time of writing this article our May speaker & outing are not confirmed. If you are interested in finding out what the Club is doing, you can contact our Secretary Helen, on telephone 5257 2220 or email hma3152@gmail.com or go on our mailing list.

Our meetings are held on the first Monday of the month, at the Uniting Church Hall Drysdale at 7.30 pm. Visitors are most welcome. **Helen Allen**



Photographs Visit to Bellarine Springs Village - the retaining basin, happy garden and members in the veggie garden.



## Trivia Answers

- |                          |                              |
|--------------------------|------------------------------|
| 1. An Aglet              | 7. Brazil                    |
| 2. Japan                 | 8. Essendon                  |
| 3. Sun Protection Factor | 9. Tennis, Sailing, Croquet, |
| 4. Calf                  | 10. Equestrianism & Golf     |
| 5. Emerald               | 10. Cucumber                 |
| 6. 42.195 kilometres     |                              |



**Central Baptist**  
Clifton Springs

*Bringing the light, love & hope of Jesus to our local & greater community.*

**You are welcome to join us -**

- Sunday Family Service **10am**
- Children's Ministry
- Play Group
- Youth Group
- Home Groups

45 Central Rd, Clifton Springs  
office@central-baptist.com.au  
centralbaptist.com.au  
(03) 5253 1833 / 0478616719




**inside 2 outside**

*30 years experience & fully insured*

**0477 406 604**  
andrew@inside2outside.com.au

- Property Maintenance
- Window Cleaning
- Pressure Washing
- Gutter Cleaning
- Door & Window Repairs
- Grab rails
- Safety Ramps
- Cosmetic Renovations
- Emergency Repairs
- Rubbish Removal
- All aspects of Carpentry

**Bellarine PC Repairs**

**Martin**  
**Mobile: 0411 472 360**  
**Workshop: 5251 5405**

10am to 4pm • Monday - Friday  
**\$80 hour plus \$40 call out charge for on site work**  
21 Eastwood Crescent Drysdale  
By appointment.  
Please call or text first.  
**- not Apple sorry**



# SEASCAPE PLUMBING

Your Local Bellarine Plumber!

CELEBRATING

10

years in business



**24/7**  
Emergency  
Service

**SENIORS  
DISCOUNT**

**WE SPECIALISE IN • General Plumbing Maintenance • Burst Pipes  
• Hot Water Services • Blocked Drains • Leak Detection • Gas Fitting  
• Water Filtration • Backflow Prevention Testing & Installation  
• High Pressure Jetting • CCTV Drain Inspections • Mini Excavation  
• Septic Tank Pump Outs • Hydro Excavation**

Lic# 53223.

# PORTARLINGTON GARDEN TRAIL - seeking gardens

Annually on the Bellarine two garden clubs alternate to deliver an open Garden Trail for one day on the Melbourne Cup long weekend in November. This year it is the turn of Portarlington Garden Club so we are looking for 10 interesting gardens of various sizes in either Indented Heads or Portarlington. A garden might be interesting because it specialises in a particular family of plants, perhaps the vegetation is integrated with the built infrastructure in unusual and effective ways, or grown for a purpose, or the plantings are in line with a particular theory or philosophy. Maybe it is just beautiful. The gardens chosen will be open from 10:00am to 4:00pm on November 1st. During this time a volunteer will be sitting at the front gate checking entry tickets and a flag will be positioned on the kerb. Gardeners are expected to be available to chat to visitors and answer questions. In the past, gardeners report having had a very enjoyable time sharing their gardens and chatting with admirers.

Whether your garden is full of flowers, edibles, natives, herbs or hedges: if you have an interesting garden and would like to be involved, please contact Kathleen Chapman from the Garden Trail Committee on 0431 599 250.



# Portarlington Garden Club

We have meetings with informative speakers in the Bayview Room, Parks Hall 3.15pm-5.15pm every 4th Monday of the month. The following Tuesday we have an excursion in the morning usually relating to the speaker's topic. This year we have a full program of topics ranging from worm farms, orchards and community gardens to botanical art, seed banks and nature reserves. Please feel free to come along to a meeting or contact Annette Lewis on 0424 035 697 for more information.

## Restriction Zone - tomato pest

Agriculture Victoria recently letterboxed residents in the Portarlington area to inform us about the tomato psyllid. This sap sucking insect is a severe pest that can devastate commercial growers. It primarily effects the Solanaceae family of plants which includes tomatoes, potatoes, egg plants, capsicums and chillies. No green part of these plants is allowed to be transported out of the Portarlington area. Affected plant material must be chopped, bagged in two plastic bags, left out in the sun for 7 days and then disposed of in the household garbage bin (not green waste). All infestations must be reported to Agriculture Victoria.

To find details of the Restricted Area and how to identify the pest, go to the website or ring 136 186 <https://agriculture.vic.gov.au/biosecurity/pest-insects-and-mites/priority-pest-insects-and-mites/tomato-potato-psyllid>



**KANE SMITH** 

**Handyman + Electrician**

Need a helping hand around your home?  
Experienced Handyman  
+ Licenced Electrician

Call me today to discuss or to get a quote  
**0420 979 053**

Servicing the Bellarine Peninsula REC: 36629

**BELLARINE AUTO SERVICE**

**5253 1644**  
**0403 993 342**

 Quality Mechanical Repairs Since 1990  
**6-8 Mortimer St. Drysdale**

 We service and repair all makes and models, LPG, Diesel and Petrol vehicles.  
[www.bellarineautoservice.com](http://www.bellarineautoservice.com)

**Treasure the Moment**

A Celebrant for all occasions on the Bellarine Peninsula & Geelong  
Nedjelka (Neda) Walker Authorised Civil Celebrant



Wedding Ceremonies • Commitment Ceremonies  
Vow Renewals • Naming Ceremonies  
Funeral & Memorial Services

**Mobile: 0428 319 405**  
Email: [info@treasurethemoment.com.au](mailto:info@treasurethemoment.com.au)

 **MORTIMER PETROLEUM**

**PETROL STATION & CONVENIENCE STORE**  
Petrol, Autogas, Bait & Fishing Supplies  
**Open 7 Days 6am - 10pm**



**97 High Street Drysdale 3222**  
**Phone (03) 5251 2603**

**Extraordinary people. Extraordinary care.**

Are you in need of support at home?  
At Prestige Inhome Care, we're committed to helping people stay in the comfort their own home. Whether you need some help with arranging appointments or household tasks, or full-time nursing care, we can tailor a range of services to meet your needs.

Personal care, dementia care, palliative care, 24-hour and disability support services available across the Bellarine Peninsula and Surf Coast.

Contact:  
Alex Birrell - Relationship Manager/Nurse  
[alex@prestigeinhomecare.com.au](mailto:alex@prestigeinhomecare.com.au)  
1300 10 30 10

 **PRESTIGE inhome care**

# Salute to the Old Portarlington Mill



The Bellarine Historical Society is holding a special Open Day on Sunday, 18 May 2025 showcasing the old Portarlington Steam Flour Mill. This National Trust listed property was recently sold and is now in private ownership, awaiting redevelopment. Many residents of the Bellarine will know this beautiful sandstone building in Turner Court and probably visited it in the past. This is an opportunity for them to reprise their memories and for newer residents to learn of its somewhat chequered past and of the people who guided its story over the years. The story began in 1856 when a company was formed with a capital of 7,500 pounds contributed by many leading citizens of the Bellarine and Geelong. Constructed in 1857 from local sandstone, it is a rare survivor of Victorian Georgian mill design and is classified as of State significance.

However, soon after the Mill began operation, the bulk of the colony's wheat production

shifted from the Bellarine-Geelong area to the Wimmera and it continually ran below capacity becoming unprofitable. It was sold to a Ballarat company in 1865 for 1,450 pounds, bringing Thomas Henry Widdicombe as mill manager. Widdicombe was closely associated with the Mill, purchasing it around 1870 when he also built a brick manufacturing facility on site. Milling ended in 1874 and the building was then used for sundry purposes resulting in significant deterioration although it remained structurally sound. Widdicombe repurchased the Mill in 1901 and at his death it was valued at just 50 pounds. The Bellarine Shire Council purchased the Mill in 1971 and transferred it to the National Trust for restoration. It was opened to the public in 1977.

When it closed the Mill, the National Trust distributed the contents to various local history organisations. The Bellarine Historical Society is mounting a one-off display of the items which it received for public viewing. This event is part of the National Trust's 'Unearthed' Australian Heritage Festival 2025. Ann Hodgkinson, President of the Bellarine Historical Society, will present a talk on the history of the Mill based on a research project that she undertook in 2021. This event is being held in the Society's Old Courthouse Museum, 11 High Street, Drysdale. The display will be open between 10.30 am and 4 pm. The talk will commence at 2 pm.



Calling all stations. Potato festival has lift-off! It all happened again at Drysdale Primary School in 2025. Along with the music, rides and displays, SpringDale Aerospace flew the flag (although it was actually my revolving radar scanner) just in case any sci-fi lovers materialised.

We did have a steady trickle of aspiring space pilots lining up to launch their first rocket, and perhaps their space careers!

This year I used a light steel tower, on the drive unit, so that the distance between the base and the scanner was constant and the fairing could be used.

For the power supply, I took a leaf out of the Apollo 13 play book, and adapted the drive to battery power. In the Apollo 13 case, after the in-space explosion, the fuel cells had to be disabled so they could use the lunar module batteries to get the astronauts home. In my case, the car battery powered the scanner in silence, so was accepted by the management.

The kids enjoyed radio talk between the base and the jetpack and firing rockets upwards courtesy of my rat-trap launcher. One of the parents had me classified as an engineer. I wish!

But I mostly remember a girl travelling in a wheel chair. She arrived, being pushed by her Dad. She signalled to me, showing a great deal of interest in operating the rocket. She wanted a turn at the rocket. I clued up her Dad and we moved her chair into position. The excitement and joy she displayed, when she sent it streaking upwards, was heart-warming. Her enthusiasm was inspirational, she must have big dreams! Signing off for now John.



**Drysdale REMOVALS & STORAGE** Reliable Service

- LOCAL • COUNTRY
- NEW SOUTH WALES
- SOUTH AUSTRALIA

**Drysdale REMOVALS & STORAGE**

**03 5251 3674**

## GEELONG & BELLARINE PLUMBING

**24/7 EMERGENCY RESPONSE SERVICE**

- |  |                     |
|--|---------------------|
| • All general plumbing & maintenance       | • Drainage          |
| • Bathroom & kitchen renovations           | • Roofing & Gutters |
| • Hot water service repairs & installation | • Gasfitting        |
| • Blocked drains & camera inspections      | • Excavations       |

Call your local plumber with over 15 years' experience for a NO OBLIGATION FREE QUOTE

**JAKE 0433 299 338**

# Memories of Yesteryear

## THE FAMILY HISTORY QUEST 12 ANCESTRY.COM

There are adds everywhere on TV for Ancestry.com and they sponsor shows like *Who do you think you are*. Ancestry.com is a great resource for family historians, but like all things it has good and bad points.

To use Ancestry.com, you really need to have a membership which can cost hundreds of dollars each year although you can have a free 14-day trial. Many libraries, including the Geelong Library, have a free logon to Ancestry.com.

With a membership you are able to search the world's largest collection of online family history records, from archives in Australia, New Zealand and around the world. Ancestry has records from over 80 countries, with some dating back to the 13th century. These records include birth, death, marriage records, shipping records and much more.

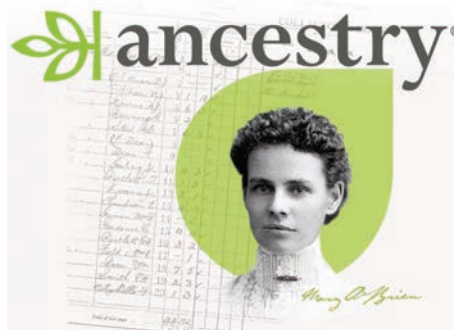
You can create your family tree on Ancestry to keep track of all your family history information.

There are also trees from other people's research you can look at. Don't use other people's trees as sources. Ancestry.com gives you other people's trees as hints. Without checking, a friend just inserted information from other trees into his tree and within a couple of days, he'd got one line of his family back to William the Conqueror. However, when he started having a close look at the tree, he saw that there were some really obvious errors, like a child being born to a three-

year-old mother. He had to go back and start again. There are thousands of online trees out there. Many of them have huge inaccuracies and contain facts without source citations, or sources to people who are not connected to your tree. They are useful to look at to see what might be a fact, but nothing should be added to your own tree without a verifiable source.

You can, for an additional cost, do an Ancestry.com DNA test to learn about your ancestral origins and to be matched with genetic relatives. You need to review the DNA results alongside your family tree for the best results. There are other sites similar to Ancestry.com including findmypast.com.au which also cost money. Some similar free sites are familysearch.com and wikitree.com.

John Mathes



## Clifton Springs & Curlewis Coastcare Group

We had a very successful Habitat Restoration session at the Second Dell and thanks to our hard-working volunteers who removed a small mountain of flax-leaf broom and many old plastic tree guards.

Our monthly Waterwatch was helped by some new volunteers. The water quality is generally good, although the March results indicated some degradation. This may be explained by the increased decomposition of organic material in the stream during a low rainfall and warm weather period.

### Forthcoming Events:

**Monday May 5th**, Waterwatch Monitoring at CS Boat Harbour at 9.30am

**Wednesday May 21st**, Habitat Restoration at the CS The Dell/Second Dell at 9.30am - See Facebook and remember to put it in the diary.

**Sunday July 27th** for a major Tree Planting exercise on the cliff top at Beach Vista Drive, Curlewis from 9.30am, which is part of National Tree Day and the Geelong Nature Festival.

Hans Heine, Rob Gardner



Maintain your Zest for Life



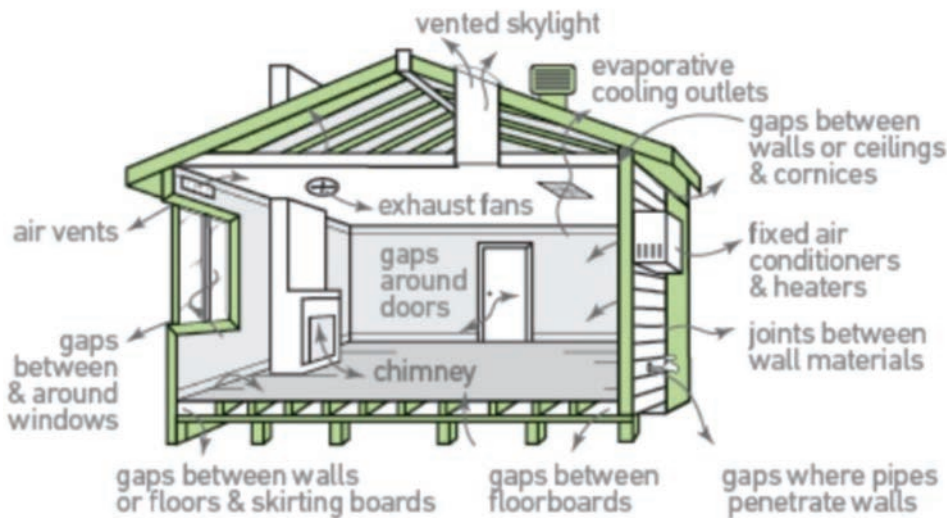
Equipment Sales, Hire & Service

1/93 Murradoc Rd, Drysdale VIC 3222

Ph: (03) 4252 8199

# Sustainability News

Winter is on its way and it's time to check out the seals and stop the draughts and have someone look at the Ceiling Insulation to determine if it should be realigned or increased. There are some good door draught stoppers etc available at the hardware stores and from Ecomaster and others.



Heating a house / room is much cheaper using an air conditioner (when configured for heating as well as cooling) than gas central heating. For those homes with gas central heating throughout, it is generally more economic to use the air conditioners where possible and perhaps have the remaining areas zoned off or at a lower temperature (subject to the gas heater minimum requirement). Many people use only the air conditioner as a heater for the shoulder periods and top it up with the gas when it's really cold. However, it would probably be more economic to install an additional air conditioner (or two) and remove the gas heating altogether.

Hot water heating by an electric heat pump is much more efficient and cheaper than using gas and is often the first step in converting away from gas though some prefer to replace the gas cooktop first to reduce the adverse health effects (eg. Asthma particularly for children). Once all the gas appliances are removed one saves an additional approx. \$400 annually in connection charges as well.

Gas demand is expected to slowly decline as it is replaced by electric appliances and will be used mostly in some specific manufacturing areas and as a quick response source for generating electricity. However, it is not expected that this will increase from its current level of about 5% of electricity generation due to its very high cost. AEMO (The Energy Operator) reported for Q4, 2024 the prices when each source of generation determined the cost was Gas at 18.9c/kWh, Black Coal 10.8c, Brown Coal 1.1c with solar and wind both being negative.

Rob Gardner

# BELLARINE WANDERERS

We walk every Thursday morning, generally from 9.30am for about 90 minutes followed by a coffee.

We try to go to less visited places and on smaller tracks and discuss items of interest along the way; geography, geology, flora, fauna, history... We go to a different place each week and all over the Bellarine Peninsula and sometimes during the holidays we go further, e.g. Geelong, You Yangs, Brisbane Ranges, Anglesea.

On most Tuesdays we also have a longer walk (2.5 to 3 hours) to a different spot each week and generally start at about 8.30am.

Rob G



**autopro**  
Drysdale **Open 7 Days**

For whatever you need for automotive repair, maintenance & general care.

- Spare Parts • Electrical • Car Care
- Touring & Vehicle Accessories • Oils
- Tools • Paints • Workshop Accessories & so much more...

2/31 Murradoc Road, Drysdale  
Phone: 5253 2811



DESIGN • PRINT • FINISH • 5251 1735  
New Address Unit 4, 82-84 Murradoc Rd, Drysdale  
tavidsprint@gmail.com • www.tavids.com.au

**JAN'S ENGRAVING & TROPHIES**

Latest designs in Trophies, Medals & Awards.

Call Jan to discuss your needs.  
**0425 796 165**  
19 Centennial Blvd. Curlewis.  
E: jan@jansengraving.com.au  
www.jansengraving.com.au

**RepcO** AUTHORIZED SERVICE **DRYSDALE MOTORS**

All Mechanical Repairs including New Vehicle Log Book Servicing  
Specialising in European Vehicles: Audi, Mercedes, Peugeot, VW and more  
Nationwide Warranty  
why travel when the best is right here in Drysdale  
**5253 1033**  
44 Murradoc Road, Drysdale  
info@drysdalemotors.com.au

**St. Leonards PHYSIO BY THE BAY** LIKE US ON f

Neil Wise is a highly experienced physiotherapist with over 40 years of experience in Private Practice

- Private, Concession & Aged Pension rates available – no referral required
- DVA, Workcover, TAC, CDM (Medicare) patients welcomed with referral

P: 5257 1832  
1 Mouchemore Avenue, St Leonards  
E: info@stleonardsphysiobythebay.com.au  
W: www.stleonardsphysiobythebay.com.au

# Croquet

*Celebrating 75 YEARS at  
Drysdale Croquet Club  
in May, 2025*

## Then and Now

On April 18th, 1950, a motion moved by Mrs O Peel and seconded by Mrs R Whitcombe, was passed that the Drysdale Croquet Club be formed. This inaugural meeting had 15 ladies present and a few of the ladies were from the Portarlington Croquet Club and were experienced players and administrators. One of the founding members was Mrs Essie Rodgers (grandmother of Anne Brackley and David Mortimer). It was anticipated that the Croquet Club would form with the assistance of the Drysdale Bowling Club.

The adjacent bowling club had been formed a year earlier and the membership consisted of men, so the game of croquet which is believed to have commenced in Geelong in 1906, was an ideal past-time for the women folk in the local area.

The very first set of new hoops, balls, pegs and clips were purchased from Hartleys, Flinders St Melbourne, and sent by goods rail to Geelong in the following months. By the end of 1950, Heidelberg Croquet Club had gifted a set of second-hand balls and hoops to Drysdale.

The first croquet court was prepared by the Bowling Club to the north of their only playing surface on land donated by Messrs. R.



**Then...Pennant Team from 1975**

Whitcombe, A. Judd and C. Holliday.

The Clubhouse was a 9 by 9 feet open shed with dirt floor. In the first few years, members used the public toilets in the village of Drysdale, until an outdoor toilet was constructed nearer to the court. Gradually, the facilities improved to include running water, window, door, concrete floor and carpet.

With expanding membership in the 1980's and the need for a larger clubhouse, a new brick croquet Clubhouse was opened in 1990, and members were able to use the Bowling Club facilities. The expansion of the Bowling Club greens also resulted in a second croquet court being laid to the west of the existing one in 1995.

The sport of croquet is great for the mind and for keeping physically active which is why it is becoming more popular. Member numbers for the first 50 years were consistent at around 20, but now the clubhouse is bursting at the



**Now...Club Championship 2025**

seams with around 50 members, with many days of play for the week. There are many more men playing these days when once it was just women, and the age range is much larger. The uniforms for competition play have also changed over the years – once all white, now green with white. The game has also seen a change from the more traditional Association Croquet game to the newer and very popular Golf Croquet which is played at Drysdale.

On Sunday May 4th, Drysdale Croquet Club will be celebrating World Day of Croquet as well as 75 years as a Club, from 12:30pm, and invite members of the community to join Drysdale CC members celebrate on this Open Day, have a hit and share in some afternoon tea. Contact (below) if you'd like to attend.

**Jenny Payne** - President - 0428 740 591

Drysdale Croquet Club, adjacent to the Bowling Club, on Clifton Springs Rd.



**DRYSDALE  
REMEDIAL  
THERAPIES**

Shop 1, 15 Hancock St.  
Drysdale  
T: 5251 3410

[www.drysdalere Remedialtherapies.com.au](http://www.drysdalere Remedialtherapies.com.au)

## HAVE YOU EVER HEARD ABOUT BOWEN THERAPY?

*It's gentle and it seems to help when nothing else does.*

Bowen Therapy helps your body rebalance and recharge itself. It is a very gentle technique that brings the body into relaxation where it can repair and rebuild. Its a very effective treatment for stress release and many other physical conditions, joint and muscle pains.

Bowen Therapy may help with

- Headaches
- Vertigo
- Long COVID Symptoms
- Concussion
- Sinus Congestion
- Lower back pain
- Hip pain
- Neck & shoulder pain
- Depression, Grief, stress and anxiety.

- Remedial Massage
- Bowen Therapy
- Relaxation Massage
- Hot Stone Massage
- Myofascial Cupping
- Dry Needling
- Children's Therapies
- Sports Performance



**Book online**

 **HICAPS**  
Fast claims... on the spot



**choice**

heating and cooling

**solar**

**(03) 5251 2771**

5B 35-37 Murradoc Road Drysdale

[www.ecochoiceheatcool.com.au](http://www.ecochoiceheatcool.com.au)

No Deposit Finance / Credit Card Payments



**SPECIALIST DEALER**

**Split Systems**

**2.5kW to 9kW**

- Fully Installed - 5 Year Warranty

**Ducted Systems**

**5kW to 25kW**

- Fully Installed - 5 Year Warranty



Victorian Energy Upgrades Rebates Available

# Premium Energy Efficient Heating & Cooling

**Premium Solar Systems**  
6kW to 20kW

Enquire about a **FREE Home Assessment**



- ENPHASE. SUNGROW Fronius CanadianSolar
- Inverter - 10 Year Warranty
- Premium Panels - All Black 25 Year Product Warranty

**SUNGROW**  
Battery Packages

Enquire about a **FREE Home Assessment**



**9kW to 19kW**  
Battery Storage

Premium Panels 25 Year Warranty  
Sungrow 10 Year Warranty



**Tesla Powerwall**

Key Features:  
Integrated Battery inverter

Capacity:  
13.5 kWh  
10 year warranty

TESLA  
POWERWALL  
TESLA HOME BATTERY



Other Battery options available. Call us for details.

Enquire about a **FREE Home Assessment**

**THE FUTURE OF HOT WATER IS HERE**  
Air-source CO2 Heat Pump Hot Water System

**RECLAIM 315L**

- Industry leading technology
- Naturally environmentally friendly
- Fully Solar PV compatible
- Industry first smart controller
  - 10 year warranty
- Australian made tank & controller
- Global Warming Potential refrigerant rating of 1 indicating that the system is the most environmentally friendly hot water system in the market



Enquire about a **FREE Home Assessment**

**istore 180L/270L**

- Reduce energy costs
- Registered Clean Energy product
- Fully Solar PV compatible
- All-In-One Heat Pump
- 5 year comprehensive warranty all-in-one heat pump



**All Warranty and Servicing by Eco Choice**

LIC: Plumbing 49132 - Elec 20281 - Arctick AU38204 - Solar A8699184